

## The estimate of number of population and demographic indicators 2020

The purpose of production of population estimates is to collect the data necessary for the analysis of natural changes of population in Montenegro and municipalities, natality, fertility and other indicators.

According to estimates of population:

- Number of inhabitants in Montenegro in mid-2020 is 621 306;
- Number of children (aged 0-17) in Montenegro in mid-2020 is 134 363 ili 21,6% of the total population;
- Working age population or the population aged 15-64 years is 412 085 or 66.3% of the total population;
- Population aged 65+ years is 97 895 or 15.8 % of the total population;
- In Montenegro, on the basis of natural increase per 1 000 inhabitants, the population number do not change;
- The 1 000 population per year made 3.3 marriages, which is the rate of marriages, and the divorce rate is 1.3;
- The rate of migration in Montenegro is 8.0 which means that for each of 1 000 inhabitants 8 persons changes their place of residence within the borders of Montenegro;
- Life expectancy at birth in 2020 was 75.9 years.

**Table 1. Basic demographic indicators**  
2020

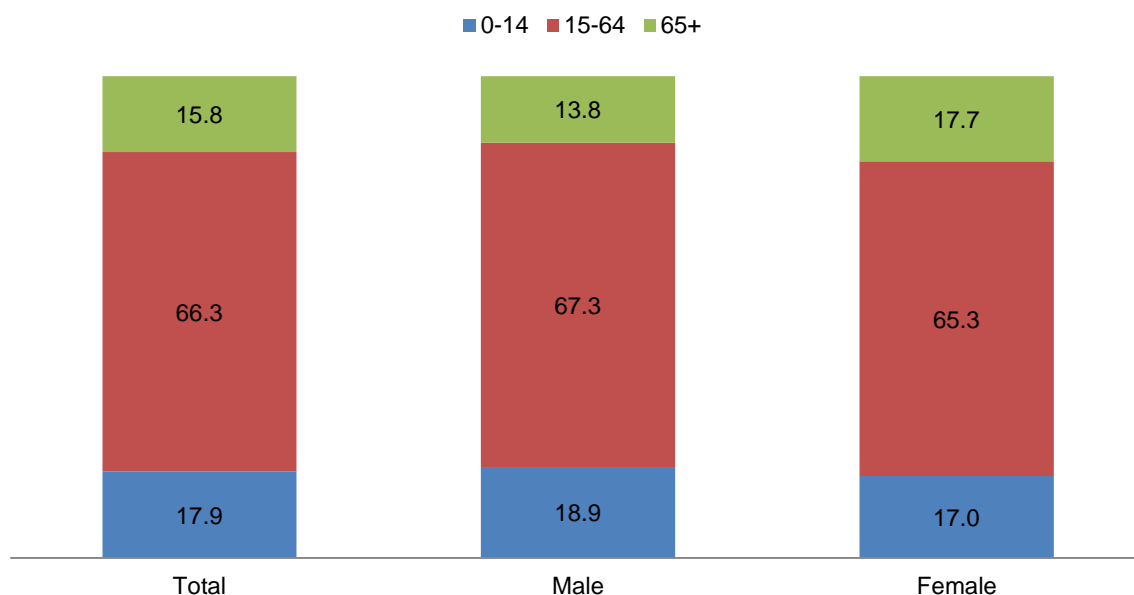
Birth rate	11.4	Infant mortality rate	2.8	Life expectancy- total	75.9
Death rate	11.7	Under five mortality rate	3.7	Life expectancy-male	73.2
Rate of natural increase	-0.3	Vital index of birth per 100 deaths	97.3	Life expectancy-female	78.8
Rate of marriages	3.3	Masculinity rate of live born	107.3	Total fertility rate	1.75
Rate of divorces	1.3	Masculinity rate of dead	116.0	Rate of migrations	8.0

## THE ESTIMATE OF NUMBER OF POPULATION

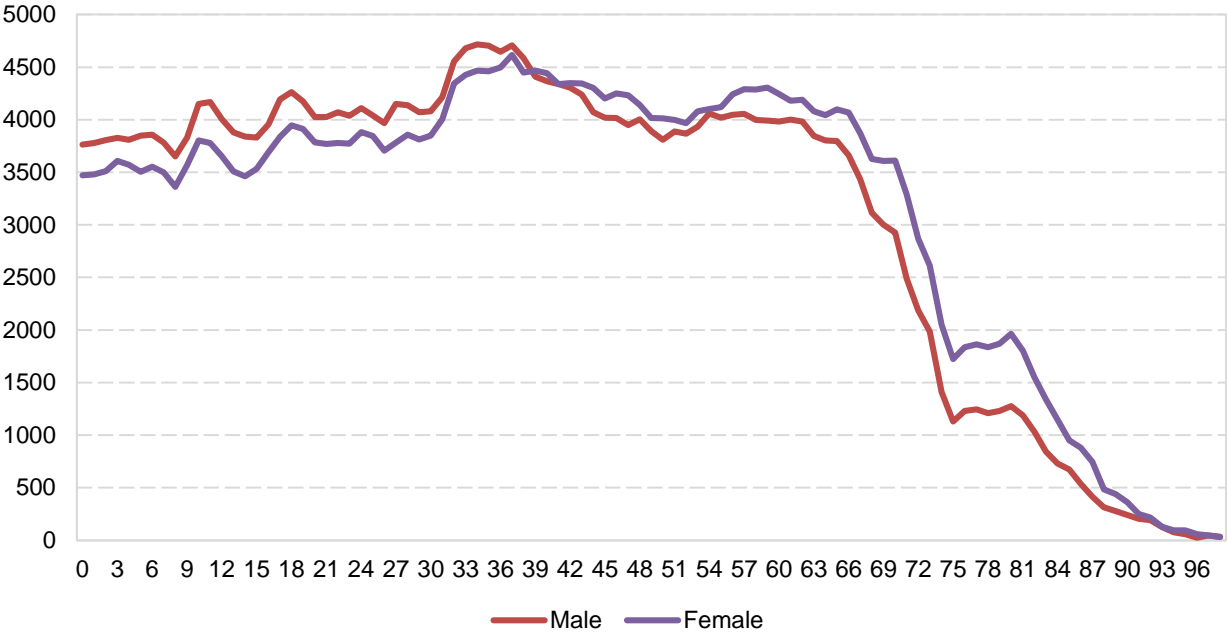
**Table 2. Population in Montenegro at the beginning, middle and the end of 2020, by age groups**

	1 January 2020			Mid-year 2020			31 December 2020		
	Total	Male	Female	Total	Male	Female	Total	Male	Female
<b>Total</b>	621 873	307 555	314 318	621 306	307 210	314 096	620 739	306 864	313 875
<b>0-14</b>	111 475	58 104	53 371	111 326	57 993	53 333	111 167	57 874	53 293
<b>15-64</b>	413 393	207 472	205 921	412 085	206 834	205 251	410 812	206 217	204 595
<b>65+</b>	97 005	41 979	55 026	97 895	42 383	55 512	98 760	42 773	55 987
<b>0-17</b>	134 959	70 303	64 656	134 363	69 972	64 391	133 757	69 631	64 126
<b>18+</b>	486 914	237 252	249 662	486 943	237 238	249 705	486 982	237 233	249 749

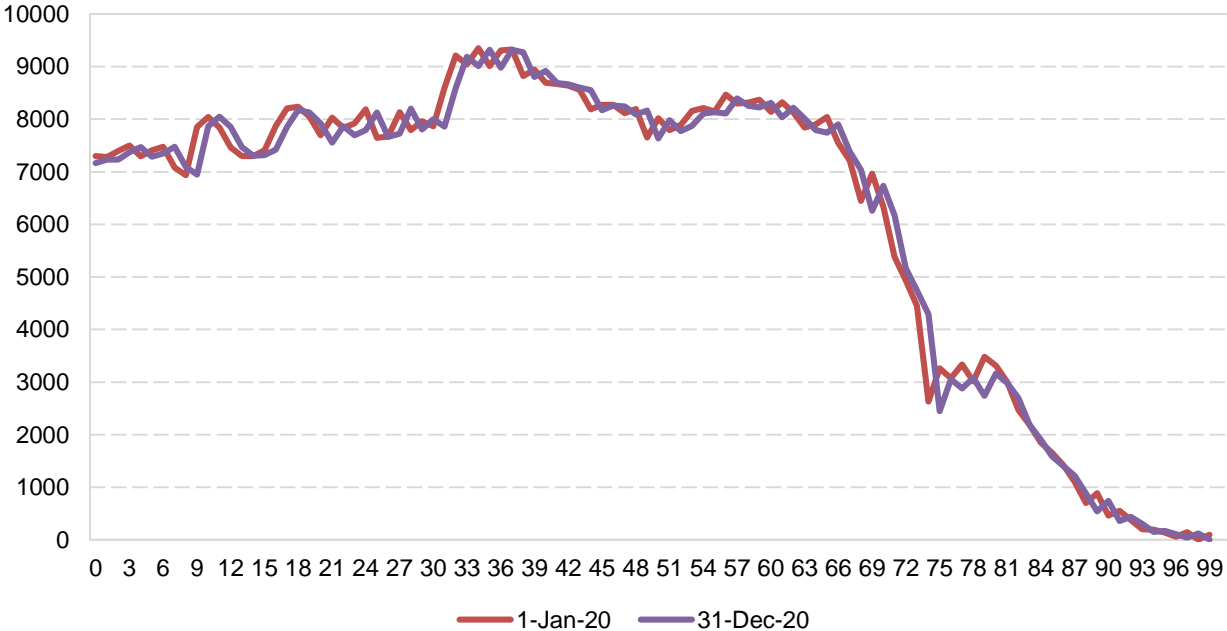
**Graph 1. Age structure of population in % by sex**  
*mid-year 2020*



**Graph 2. Population by single age and sex**  
*mid-year 2020*



**Graph 3. Population by single age**  
*at the beginning and the end of 2020*

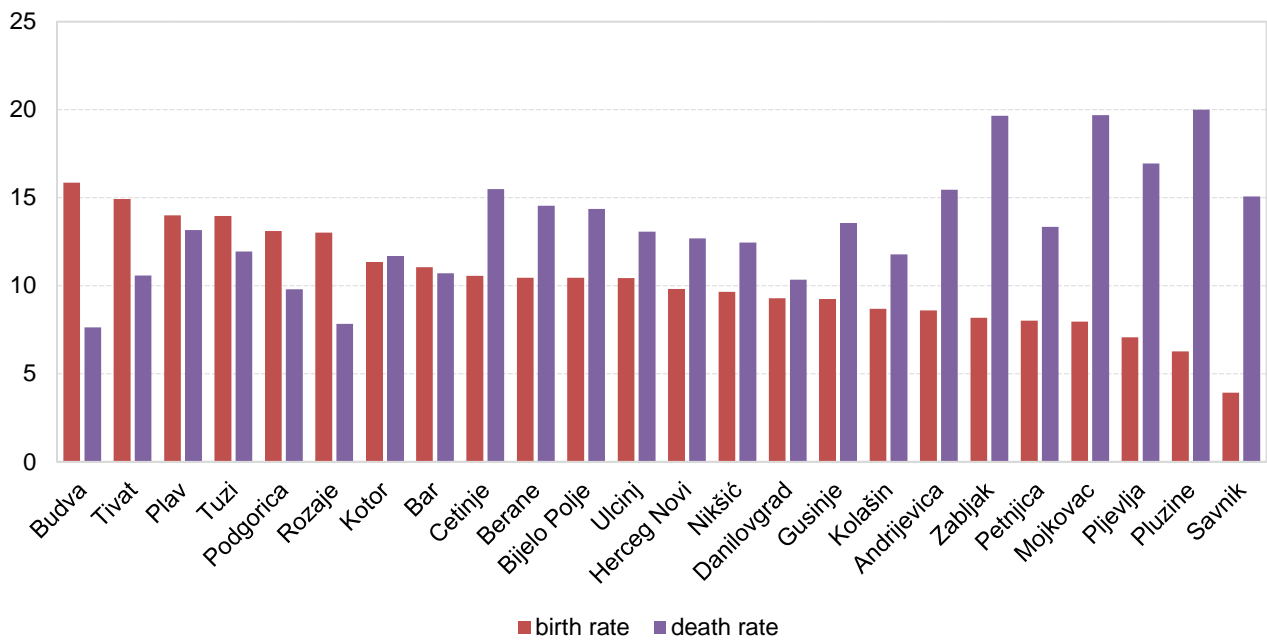


## DEMOGRAPHIC INDICATORS

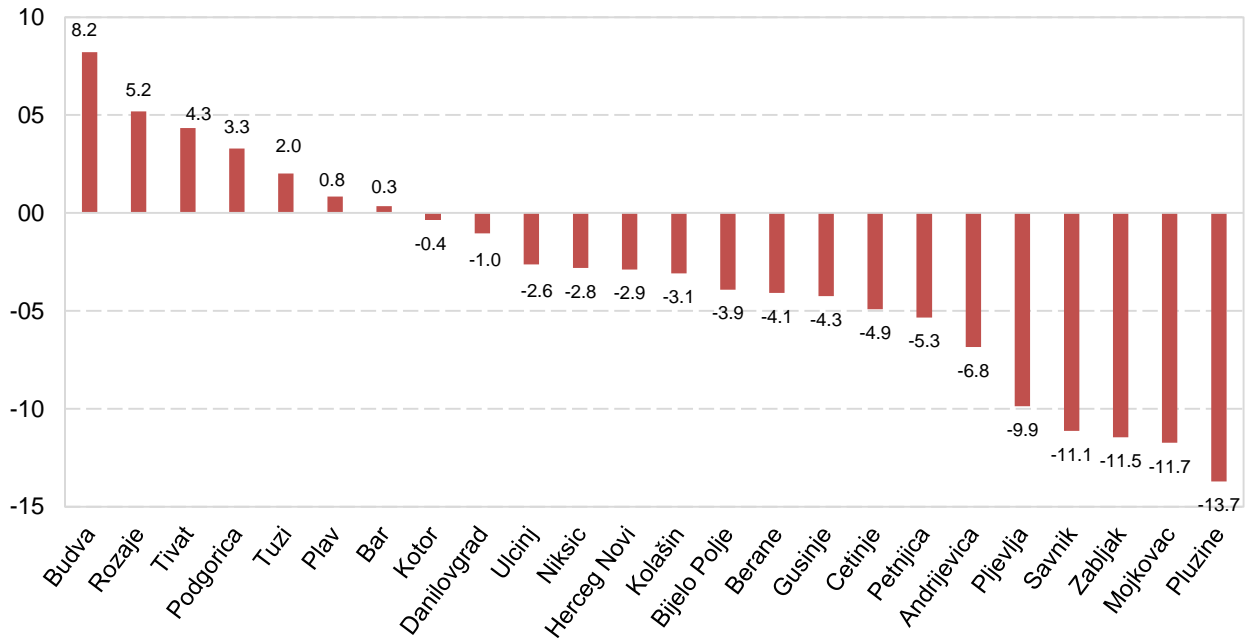
**Table 3. Indicators of vital statistics**  
2020

	Rate of natural increase	Birth rate	Death rate
<b>MONTENEGRO</b>	-0.3	11.4	11.7
Andrijevica	-6.8	8.6	15.4
Bar	0.3	11.1	10.7
Berane	-4.1	10.5	14.5
Bijelo Polje	-3.9	10.4	14.4
Budva	8.2	15.9	7.6
Cetinje	-4.9	10.6	15.5
Danilovgrad	-1.0	9.3	10.3
Gusinje	-4.3	9.3	13.5
Herceg Novi	-2.9	9.8	12.7
Kolasin	-3.1	8.7	11.8
Kotor	-0.4	11.3	11.7
Mojkovac	-11.7	8.0	19.7
Niksic	-2.8	9.6	12.5
Petnjica	-5.3	8.0	13.3
Plav	0.8	14.0	13.2
Pljevlja	-9.9	7.1	16.9
Pluzine	-13.7	6.3	20.0
Podgorica	3.3	13.1	9.8
Rozaje	5.2	13.0	7.8
Savnik	-11.1	3.9	15.1
Tivat	4.3	14.9	10.6
Tuzi	2.0	14.0	11.9
Ulcinj	-0.1	10.7	10.8
Zabljak	-12.7	6.5	19.1

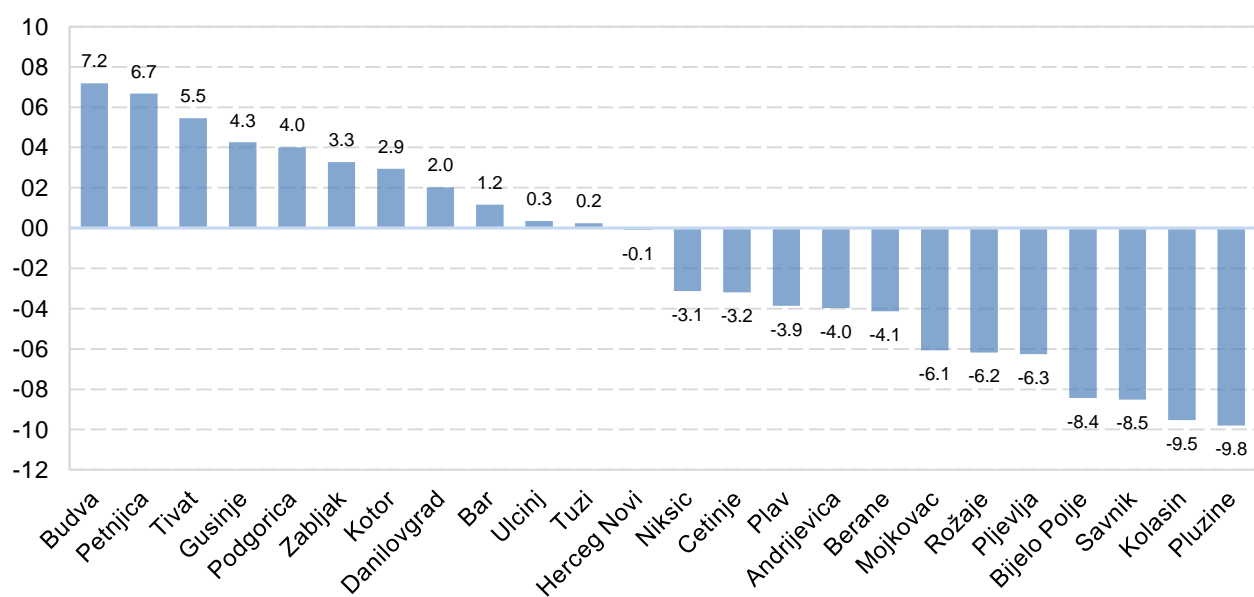
**Graph 4. Birth and death rate by municipality**  
2020



**Graph 5. Rates of natural increase by municipality**  
2020



**Graph 6. Rates of migration balance by municipality**  
2020



## METHODOLOGICAL EXPLANATION

### Estimated population

Estimate number of population refers to the beginning, middle and end of the year. The data that is related to the middle of the year is used in the calculation of demographic indicators, as well as for reporting to the United Nations. On the other hand, the population at the beginning it is requested from EUROSTAT.

Population according to the census is base for annual estimation of the population. This number is then corrected according to the results of vital statistics (natural increase) and migration flows. Results vital statistics are recorded through natural increase. In case of a positive natural increase population increases, in the case of a negative natural population growth, population decreases. Migration movements of both its citizens within Montenegro are taken into account and affect the population estimates at the level of municipalities. In estimating the population is assumed that international migration is constant number that is calculated based on the Census in 2003, then the natural growth for the period 2003-2011, as well as the 2011 census. Using these sources is calculated so called profile international net migrants per sex and aged for a period of one year. This profile used as a statistical adjustment in the period between censuses. The application of methods of statistical adjustment for estimates of the number of population is the need to show the real inhabitants annually.

### *Demographic indicators*

Based on the estimated number of the population, the number of births, deaths and marriages and divorces as well as data on internal migration following demographic indicators are calculated:

**Birth rate** is the ratio number of live births and estimated number of mid-year population, expressed in pro mille (per 1 000 inhabitants).

**Death rate** is the ratio of number of deaths and estimated number of mid-year population, expressed in pro mille (per 1 000 inhabitants).

**Natural increase rate** is the ratio of natural increase and average number of mid-year population. It is expressed in pro mille (per 1 000 inhabitants).

**Marriage rate** is the ratio of number of marriages and average number of mid-year population. It is expressed in pro mille (per 1 000 inhabitants).

**Divorce rate** is the ratio of divorces and estimated number of mid-year population. It is expressed in pro mille (per 1 000 inhabitants).

**Infant death rate** is the ratio of number of dead infants and live born children expressed in pro mille (per 1000 live born).

**Child death rate** under 5 years of age is the ratio of child deaths at age up to 5 years, and expressed in pro mille (per 1 000 live born).

**Vital index** is the ratio of live births to 100 deaths.

**Masculinity rate** is the ratio of number of males per 100 females in observed events.

**Total fertility rate**, i.e. total number of live births per one woman, i.e. the sum of appropriate specific fertility rate, is calculated for the age interval from 15 to 49 by five-year period.

**The rate of migration balance** is the ratio of annual net migration on the estimated mid-year population. The rate of migration balance can be obtained as the difference between immigration rates and emigration rates (per 1 000 inhabitants).

---

**Published by the Statistical Office of Montenegro (MONSTAT)**  
**81000 Podgorica, IV Proleterske 2, Phone: (+382) 20 230-811. Fax: (+382) 20 230-814**

*The release prepared by:*

**Demography and Migration Statistics Department**

[contact@monstat.org](mailto:contact@monstat.org)

---