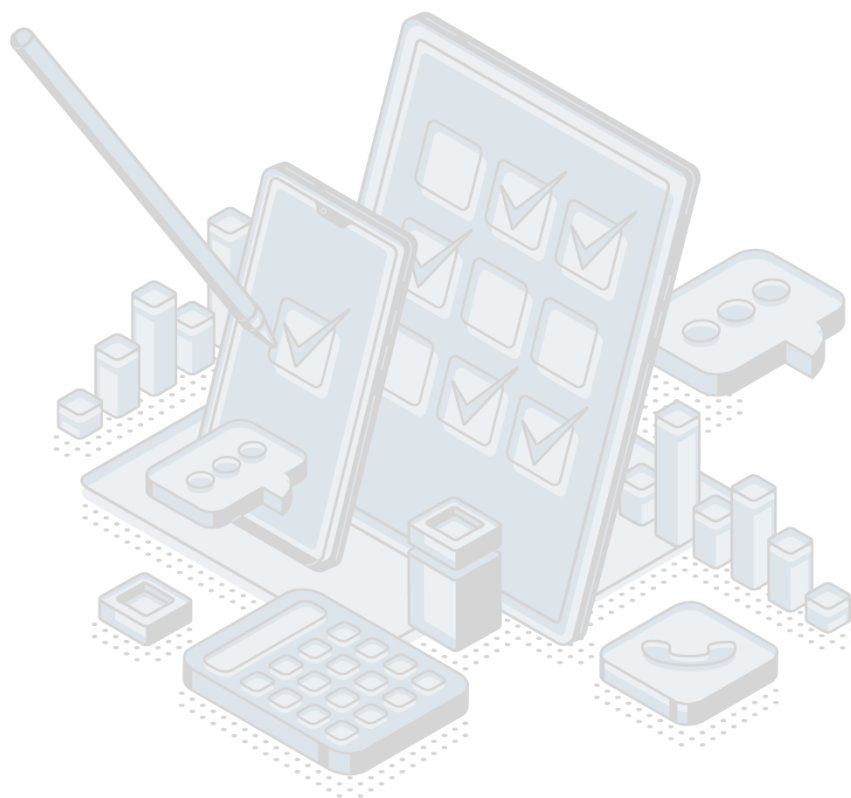


QUALITY REPORT

Primary education of adult 2022



Responsible person: Sonja Nedovic

Department: Department of education, culture and justice

Table of contents:

1. Introduction – Basic information on survey	3
1.1 Purpose, goal, and subject of survey.....	3
1.3 Statistical units.....	3
1.4 Coverage and scope of survey.....	3
1.4.1 Sectors.....	3
1.4.2 Statistical population.....	3
1.5 Reference geographical area.....	3
1.6 Concepts and definitions.....	3
1.7 Classifications.....	3
1.8 Frequency of data collection.....	3
1.9 Dynamics of data collection.....	3
1.10 Methodology.....	4
1.11 Base period.....	4
1.12 Unit of measure.....	4
1.13 Data source.....	4
1.14 Method of data collection.....	4
2. Relevance – data users	4
2.1 User needs.....	4
2.2 User satisfaction.....	4
3. Accuracy and reliability	4
3.1 Accuracy – overall.....	4
3.2 Sampling error.....	5
3.3 Non-sampling error.....	5
3.3.1 Coverage error.....	5
3.3.2 Measurement error.....	5
3.3.3 Non-response error.....	5
4. Timeliness and punctuality	5
4.1 Timeliness.....	5
Time lag of preliminary results.....	5
Time lag of final data.....	5
4.2 Punctuality.....	5
5. Availability and clarity	5
5.1 Statistical Release Calendar.....	5
5.2 Access to Statistical Release Calendar.....	6
5.3 Releases.....	6
5.4 Publications.....	6
5.5 Online database.....	6
5.6 Access to microdata.....	6
5.7 Metadata occupancy.....	6
6. Comparability	7
6.1 Spatial comparability.....	7
6.2 Time comparability.....	7
Time comparability indicator.....	7

1. Introduction – Basic information on survey

1.1 Purpose, goal, and subject of survey

The purpose of the survey is to present data on the number of participants in adult primary education and of teachers by gender in primary schools for adult education.

1.2 Legal basis

The Law on Official Statistics and Official Statistical System (“Official Gazette of Montenegro“ No 18/12 and 47/19) defines provisions for collection, processing, and dissemination of data. The Law provides to the Statistical Office legal powers to collect and access the data necessary for the implementation of Programme and Annual Plan. The Law gives a priority to the use of administrative data and right of access to individual data that are a result of survey of other official statistical producers.

1.3 Statistical units

Participants attending primary school for adults.

1.4 Coverage and scope of survey

1.4.1 Sectors

Education.

1.4.2 Statistical population

All enrolled participants, participants who have completed basic adult education and teachers.

1.5 Reference geographical area

Montenegro.

1.6 Concepts and definitions

The statistical survey covered all primary schools for adult education that work in accordance with the program of Ministry of Education, Science and Innovation.

Schools for adults education provide possibility to persons over 15 years (adults) who are not regularly attending primary school, to acquire elementary education and training.

Adults can complete primary school by either regular attending of school or taking exams. Primary education for adults is organized by grade from I to IX and lasts for four years. Organizationally, these are recognized as separate schools.

1.7 Classifications

International Standard Classification of Education (ISCED 2011).

1.8 Frequency of data collection

Annual frequency of data collection.

1.9 Dynamics of data collection

Annual dynamics - final data.

1.10 Methodology

Not relevant.

1.11 Base period

Not relevant.

1.12 Unit of measure

Number of participants and number of teachers.

1.13 Data source

Report method.

1.14 Method of data collection

Report method.

2. Relevance – data users

2.1 User needs

International users:

- ✚ Eurostat;
- ✚ World Bank;
- ✚ UN organisations;
- ✚ International Monetary Fund (IMF).

National users:

- ✚ Ministries and other public administration bodies;
- ✚ Local governments and other local government bodies;
- ✚ Central Bank;
- ✚ Non-governmental organizations;
- ✚ Students;
- ✚ Researchers;
- ✚ Media.

2.2 User satisfaction

The Statistical Office has adopted the Quality Management Strategy, the Guide for the Implementation of the Quality Management Strategy, as well as the Implementation Plan for the Implementation of the Quality Policy. In order to measure the degree to which it fulfills its obligations towards users and as part of the new quality policy, the Directorate for Statistics conducted a survey on user satisfaction.

The results of the research are available on the website of the Statistical Office, link: <https://www.monstat.org/eng/page.php?id=1502&pageid=1>

3. Accuracy and reliability

3.1 Accuracy – overall

Report method.

3.2 Sampling error

Not relevant.

Sampling error indicators

Not relevant.

3.3 Non-sampling error

Not relevant.

3.3.1 Coverage error

The Statistical Office has adopted 'Revision policy' and it is available on the website: <https://www.monstat.org/eng/page.php?id=1411&pageid=3>

3.3.2 Measurement error

In this survey, regular revisions are applied, because the Annual Plan foresees the final publication of the data. There were no unplanned revisions.

3.3.3 Non-response error

Not relevant.

4. Timeliness and punctuality

4.1 Timeliness

Releases for primary education of adult were published in December 2022.

Time lag of preliminary results

Not relevant.

Time lag of final data

The data is published as final. The final data are published no later than T+90 for the beginning of the school year, T+120 for the end of the school year. The final data are published in the Release.

4.2 Punctuality

The data are published on the date provided for in the Annual Plan and the Statistical Data Publication Calendar. There is no difference between the planned and actual announcement.

5. Availability and clarity

5.1 Statistical Release Calendar

The Law on Official Statistics and the System of Official Statistics ("Official Gazette of Montenegro" No 18/12 and 47/19) prescribes that the producers of official statistics prepare, update and publish the Calendar of publication of statistical data.

It is published on the website of the Administration for Statistics no later than December 20 for the following year, for all producers of official statistics, which includes the dates of publication of statistical data.

Any change in the publication date in the Calendar is announced in advance in accordance with the Procedure on unplanned revisions.

5.2 Access to Statistical Release Calendar

The Statistical Release Calendar is available at the following link: [Release Calendar](#)

5.3 Releases

Releases are published once a year and available is on the following link:

<https://www.monstat.org/eng/page.php?id=464&pageid=75>

5.4 Publications

The Statistical Office publishes data on primary education of adult in the following publications:

- ✚ Statistical Yearbook,
- ✚ Montenegro in figures,
- ✚ Women and men in Montenegro.

All publications published by the Statistical Office are available at the following link:

<https://www.monstat.org/eng/publikacije.php?id=100>

5.5 Online database

Not available.

5.6 Access to microdata

The Law on Official Statistics and the System of Official Statistics ("Official Gazette of Montenegro" No 18/12 and 47/19) regulates the rules under which external users can gain access to individual data for research purposes. Article 58 defines the types of scientific and research organizations that can receive such data. The provision of individual data without identifiers is possible only at the written request of scientific and research institutions, for the purpose of carrying out scientific and research activities, as well as international statistical organizations and producers of statistics from other countries. The research subject signs the Agreement with the Statistical Office, as well as the Declaration on respect for the principle of confidentiality. Producers of official statistics keep special records on the users and on the purpose for which the statistical data are made available.

5.7 Metadata occupancy

Metadata completion rate represents the ratio of the number of completed metadata data in relation to the total number of acceptable metadata fields. For this survey, the metadata data completion rate is 100%.

6. Comparability

6.1 Spatial comparability

Data publication is in accordance with the International Standard Classification of Education (ISCED-2011) and national requirements. Comparability with all countries using the same methodology is ensured.

6.2 Time comparability

A usable time series of data is available since 2015.

Time comparability indicator

Indicator CC2 is 7.