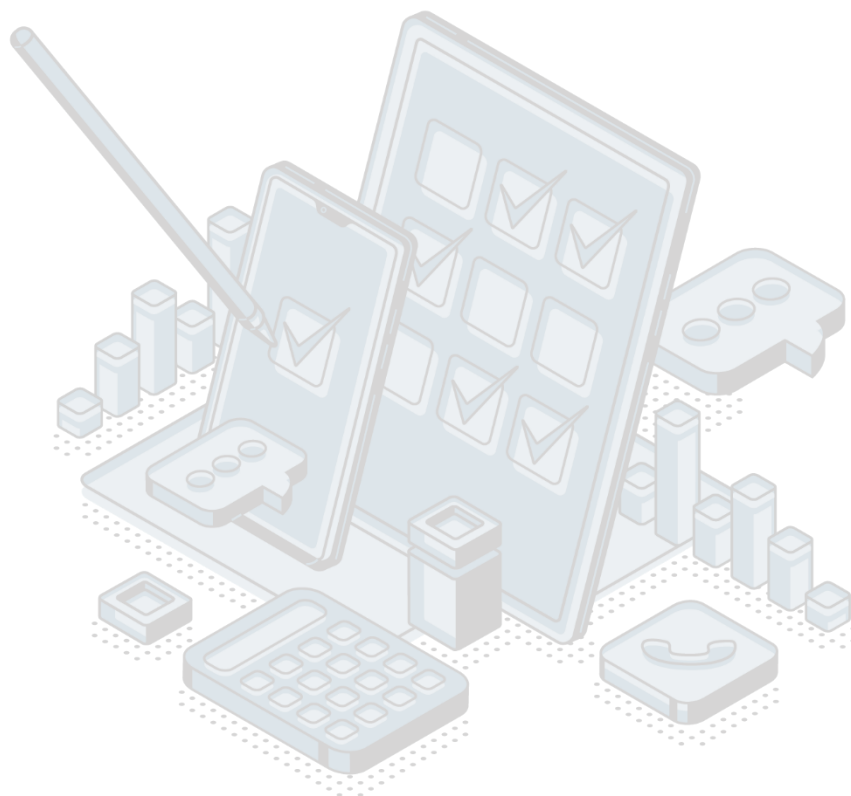


QUALITY REPORT

Consumption of construction and propulsion materials 2021



Odgovorno lice: Suzana GOJCAJ

Naziv odsjeka: Department for short-term indicators

Table of contents:

| | |
|---|----------|
| 1. Introduction – Basic information about the survey | 3 |
| 1.1 Purpose, goal and subject of the survey | 3 |
| 1.2 Legal basics | 3 |
| 1.3 Statistical units | 3 |
| 1.4 Coverage and scope of survey | 3 |
| 1.4.1 Sectors | 3 |
| 1.4.2 Statistical population..... | 3 |
| 1.5 Referent geographical area..... | 3 |
| 1.6 Concepts and definitions..... | 4 |
| 1.7 Classifications | 4 |
| 1.8 Frequency of data collection | 4 |
| 1.9 Frequency of data dissemination | 4 |
| 1.10 Methodology | 4 |
| 1.11 Base period..... | 4 |
| 1.12 Unit of measure..... | 4 |
| 1.13 Source of data..... | 4 |
| 1.14 Method of data collection | 5 |
| 2. Relevance – Data users | 5 |
| 2.1 User needs..... | 5 |
| 2.2 User satisfaction | 5 |
| 3. Accuracy and reliability | 5 |
| 3.1 Accuracy – Overall remark..... | 5 |
| 3.2 Sampling error | 5 |
| Indicators of sampling error..... | 6 |
| 3.3 Non-sampling error | 6 |
| 3.3.1 Coverage error | 6 |
| Indicator of coverage error | 6 |
| 3.3.2 Error of measurement..... | 6 |
| 3.3.3 Non response error..... | 7 |
| Item non-response rate | 7 |
| 3.3.4 Data processing error..... | 7 |
| Imputation rate | 7 |
| 3.4 Seasonal adjustments..... | 7 |
| 3.5 Data revision | 7 |
| 3.5.1 Data revision policy | 7 |
| 3.5.2 Data revision practice | 7 |
| 3.5.3 Data revision - average size | 8 |
| 4. Timeliness and punctuality | 8 |
| 4.1 Timeliness..... | 8 |
| 4.2 Punctuality | 8 |
| 5. Availability and clarity | 8 |
| 5.1 Statistical Release Calendar | 8 |
| 5.2 Access the data Release Calendar | 9 |
| 5.3 Releases | 9 |
| 5.4 Publication | 9 |
| 5.5 On-line databases..... | 9 |
| 5.6 Access to micro data..... | 9 |
| 5.7 Metadata occupancy..... | 9 |
| 6. Comparability | 9 |
| 6.1 Comparability - geographical | 9 |
| 6.2 Time comparability..... | 9 |

1. Introduction – Basic information about the survey

1.1 Purpose, goal and subject of the survey

The aim of survey is to collect the data necessary for the calculation of quantity and value of building and drive material spent. The data will be available at the product group by type of material.

1.2 Legal basics

The Law on Official Statistics and Official Statistical System (Official Gazette of Montenegro No 18/12, 47/19) defines provisions for collection, processing, and dissemination of data. The Law provides to the Statistical Office legal powers to collect and access the data necessary for the implementation of Programme and Annual Plan. The Law gives a priority to the use of administrative data and right of access to individual data that are a result of survey of other official statistical producers. As an annex to legal provisions, Statistical Office has signed several memoranda on cooperation with administrative data providers.

1.3 Statistical units

Reporting units are enterprises whose main activity is construction and who are in the Statistical Business Register registered in sector F of NACE Rev.2 Classification and enterprises (KAU) which are not registered in sector F, but whose local units perform the construction works.

1.4 Coverage and scope of survey

1.4.1 Sectors

Reporting units of survey on consumption of construction and propulsion materials are enterprises with 5 and more employees which are registered in sector F – construction (area 41, 42, 43) according to the classification NACE Rev.2 and enterprises (KAU) which are not registered in sector F, but whose local units perform the construction works and for this purpose the material:

1. For the construction of buildings;
2. For maintenance and repair of mechanical and vehicle fleet;
3. The operation of machinery and rolling stock, and firewood;
4. Office and other auxiliary materials.

Enterprises with turnover = 0 are excluded.

1.4.2 Statistical population

The 2021 sample comprised 105 enterprises with primary and secondary activity in the construction.

1.5 Referent geographical area

Montenegro

1.6 Concepts and definitions

The type of material includes the type of material consumed, whether the material was purchased or produced by the reporting unit. If data is provided for prefabricated elements or example mortar and concrete, the material that spent for their production (cement, sand, gravel, etc.) should not be shown.

The amount of material used or consumed is stated in the units of measures shown in the questionnaire. If any of the units of measure defined in the questionnaire differs from the unit of measure for which these materials are kept in bookkeeping, recalculation should be carried out on the basis of norms normally established in practice.

The value of the material used or consumed is stated in real prices on the basis of an invoice in thousands of EUR. If the company records the purchased and used material in the planned prices, it is obliged to present it in real prices. The cost of external transport is included in the value of the material. The total value represents the sum of the displayed values for all materials.

1.7 Classifications

Statistical classification of economic activities in the European Union - NACE Rev. 2

1.8 Frequency of data collection

Data are collected quarterly.

1.9 Frequency of data dissemination

Data are published quarterly in accordance with the Statistical Release Calendar.

1.10 Methodology

Methodology of Consumption of construction and propulsion materials survey is available on website: [Methodology](#)

1.11 Base period

Reference year.

1.12 Unit of measure

Values are expressed in thousands euros, while the quantity is expressed in defined units of measure.

1.13 Source of data

Reporting units of survey on consumption of construction and propulsion materials are enterprises with 5 and more employees which are registered in sector F – construction (area 41, 42, 43) according to the classification NACE Rev.2 and enterprises (KAU) which are not registered in sector F, but whose local units perform the construction works. The framework for the sample was formed on the basis of data from the Statistical Business Register, which includes all active business entities in the field of construction as well as KAU for which construction is a secondary activity.

1.14 Method of data collection

Data are collected by questionnaires (by e-mail or post).

2. Relevance – Data users

2.1 User needs

International users:

- ✚ Eurostat
- ✚ World Bank,
- ✚ UN organizations,
- ✚ International Monetary Fund.

National users:

- ✚ Ministries and other public administration bodies;
- ✚ Local government and other local government bodies;
- ✚ Central bank;
- ✚ Non-governmental organizations;
- ✚ Students;
- ✚ Researchers;
- ✚ Media.

2.2 User satisfaction

The Statistical Office has adopted the Quality Management Strategy, the Guidebook to the Implementation of the Quality Management Strategy, as well as the Plan for the Implementation of the Quality Policy. In order to measure the degree to which fulfills obligations towards users and within the new quality policy, the Statistical Office conducted User satisfaction survey. The results of the survey are available on the Statistical Office website, link: [User satisfaction report](#)

3. Accuracy and reliability

3.1 Accuracy – Overall remark

The results of survey on consumption of construction and propulsion materials are based on a sample of reporting units and are subject to the usual types of errors associated with sampling techniques as well as non-sampling errors, measurement errors, processing errors, and non-response.

3.2 Sampling error

Survey of consumption of construction and propulsion materials is done on a sample basis. Included are all enterprises and KAU with 5 and more employees who are registered in sector F according to the classification NACE Rev.2. The sample includes all reporting units from the class 2 and 3 (50 and more employees), while reporting units from class 1 is selected by random sample.

Indicators of sampling error

Sample error is regularly calculated and on average it was 0.01 during 2021. The coefficient of variation was also the same.

3.3 Non-sampling error

There are four types of non-sampling errors:

- 1) Coverage errors - errors that occur between the target population and the sample frame;
- 2) Measurement errors - errors that occur during data collection. The source of these errors may be the information system, the interviewer or the data collection method;
- 3) Processing errors - errors that occurred after data collection, e.g. errors during input, editing and weighting;
- 4) Non-response errors - errors that occurred as a result of an unsuccessful attempt to obtain the desired information from the reporting unit.

There can be two main types of non-response errors:

- 1) non-response of the unit - absence of information of the entire sample unit and
- 2) non-response to the item - the sampling unit was successfully contacted, but not all the necessary information was obtained.

3.3.1 Coverage error

Encapsulation errors can be errors:

- 1) excessive coverage;
- 2) insufficient coverage.

Overcoverage represents the proportion of units from the sample frame that do not belong to the target population.

Insufficient coverage is a problem that arises due to insufficient coverage, i.e. failure to update the framework used to select the sample. The undercoverage rate is difficult to estimate because it is not possible to know which units are not included in the target population.

Indicator of coverage error

Overcoverage is appearing when a company which is registered in sector F (area which is the subject of observation) delivered information to deal with the some other activity, not construction, which means it should not have been found in the frame of sample.

3.3.2 Error of measurement

For the data collection of the survey on consumption of construction and propulsion materials there is used a questionnaire. Errors of measurement that can be generated using the questionnaire are minimized. Measurement errors are errors that occur during data collection and cause recorded values of variables to

be different from the true ones. Indirect analysis, based on the results on editing phase is implemented for correction.

3.3.3 Non response error

Non-response errors are errors due to an unsuccessful attempt to obtain the desired information from the selected unit. Two main types of non-response errors are considered:

- 1) Unit non-response, which refers to the absence of information on the entire units (enterprises) selected in the sample;
- 2) Item non-response that refers to the situation in which the sampled unit was successfully surveyed, but not all the necessary information was obtained.

Unit non-response rate

The unit non response rate is calculated as the ratio of the number of units which did not responded to the questionnaire. The rate of unresponsive units in 2021 was around 25%.

Item non-response rate

The item non response rate is calculated as the ratio of the eligible units which have not responded to a particular item and the in-scope units that are required to respond to that particular item. In these survey, item non response rate was around 7%.

3.3.4 Data processing error

The collected data goes through a series of processes before the final grade: encryption, input, editing, imputation, weighting, tabulation, etc. Errors arising in these phases are called processing errors.

Imputation rate

Not available.

3.4 Seasonal adjustments

Not relevant.

3.5 Data revision

3.5.1 Data revision policy

Statistical office of Montenegro has adopted revision policy and it is available on the website: [Revision policy](#)

3.5.2 Data revision practice

Typical revision is minimal. Significant revisions have only been made to reflect changes in methodology.

3.5.3 Data revision - average size

Not relevant.

4. Timeliness and punctuality

4.1 Timeliness

Preliminary data are published 9 months after the end of the reference period. The final data are published 10 months after the completed reference period.

Time lag of the first results

The time lag of preliminary results indicator represents time between the date of the last day of reference period and the date of publication of preliminary data. The preliminary data are published 9 months after the completed reference period. The deadlines for the publication of preliminary data on consumption of construction and propulsion materials in 2021 have been met in accordance with the Statistical Release Calendar.

Time lag of the final results

Timeliness indicator of publication of final data represents the time between the date of the last day of the reference period and the date of publication of final data. The final data are published 10 months after the completed reference period. The deadlines for the publication of final data on consumption of construction and propulsion materials in 2021 have been met in accordance with the Statistical Release Calendar.

4.2 Punctuality

The punctuality indicator represents the time difference between the actual publication of the data and the planned publication of the data. Deadlines of dissemination of the consumption of construction and propulsion materials data are defined in the Statistical Release Calendar and these deadlines are respected.

Indicator TP3 (punctuality) is 0, i.e. no difference between the actual publication of the data and the planned publication of the data, that means that the Releases are published according to the deadlines which are defined in the Statistical Release Calendar.

5. Availability and clarity

5.1 Statistical Release Calendar

The Law on Official Statistics and Official Statistical System (Official Gazette of Montenegro No 18/12 and 47/19.) stipulates that official statistical producers prepare, update, and publish Statistical Release Calendar. It is published on the website of Statistical Office not later than 20 December for the next year, for all official statistical producers that includes date of releasing statistical data. Any change in date of releasing in the Calendar is published in advance in accordance with the Procedure on Unplanned Revisions.

5.2 Access the data Release Calendar

The calendar of data publication is available on the following link: [Release Calendar](#)

5.3 Releases

Consumption of construction and propulsion materials release are available on link: [Release](#)

5.4 Publication

All publications published by the Statistical office of Montenegro are available at the link: [Publication](#)

5.5 On-line databases

[Database](#)

5.6 Access to micro data

The Law on Official Statistics and Official Statistical System (Official Gazette of Montenegro No 18/12 and 47/19) regulates rules under which external users can obtain an access to individual data for needs of research. Article 58 defines types of scientific and research organizations that can obtain such data. Providing individual data without identifier is possible only upon a written request of scientific and research institutions, with purpose of performing scientific and research activities as well as international statistical organizations and statistical producers from other countries. Research entity signs the agreement with Statistical Office, and it signs the statement on respecting the confidentiality principle. Official statistical producers keeps a separate records on users and purpose of using the statistical data given to these users.

5.7 Metadata occupancy

The ratio of the number of metadata elements provided to the total number of metadata elements applicable. For this survey, the metadata fill rate is 100%.

6. Comparability

6.1 Comparability - geographical

Not relevant.

6.2 Time comparability

Data on consumption of construction and propulsion materials are comparable over the time and they are available since 2006 on MONSTAT web site, within section [Data](#).

Time comparability indicator

Not available.