

Gross domestic product of Montenegro in 2012

Real growth rate of gross domestic product for 2012 is -2.5%.

This release presents results of gross domestic product (GDP) for Montenegro by the production and expenditure approach for the 2012 year. at current and constant prices. Results for 2012 are based on data sources which are comprehensive and fully comparable with GDP 2011 compilation results, which are partially revised following changes of Balance of Payment (BoP) data-Central Bank of Montenegro (CBCG). Those changes have influenced the change in the structure of GDP, but not change the total amount.

Gross domestic product of Montenegro in 2012 amounted in total 3 149 million EUR, and for 2011 was 3 234 million EUR.

Gross domestic product per capita in 2012 is 5 063 EUR and for 2011 was 5 211 EUR.

	2011	2012
1. Gross domestic product at current prices. mill. EUR	3 234	3 149
2. Population (in thous.)	620.6	622.0
3. Gross domestic product per capita in EUR <i>_{3= (1/2)}</i>	5 211	5 063
4. Gross domestic product at constant prices (at prices of previous year). mill. EUR	3 204	3 152
5. Real growth rate of GDP (%) <i>(GDP at constant prices in current year / GDP at current prices in previous year) x 100 - 100</i>	3.2	-2.5
6. Nominal growth of GDP-a (%) <i>(GDP at current prices in current year / GDP at current prices in previous year) x 100 - 100</i>	4.2	-2.6
7. Deflator (%) <i>(GDP at current prices in current year / GDP at constant prices in current year) x 100 - 100</i>	0.9	-0.1

Table 1: Gross output and gross domestic product at current prices, 2011 – 2012

In thous. EUR

Classification of activities		Gross output		Intermediate consumption		Gross value added	
		2011	2012	2011	2012	2011	2012
A	Agriculture, forestry and fishing	424 997	394 423	168 271	162 411	256 726	232 012
B	Mining and quarrying	69 729	65 900	34 004	32 309	35 725	33 591
C	Manufacturing	558 502	503 049	395 967	367 587	162 535	135 462
D	Electricity, gas, steam and air conditioning supply	178 827	194 210	113 403	104 502	65 424	89 708
E	Water supply; sewerage, waste management and remediation activities	90 272	91 617	23 042	22 755	67 230	68 862
F	Construction	548 109	516 829	390 028	371 637	158 081	145 192
G	Wholesale and retail trade; repair of motor vehicles and motorcycles	771 102	747 482	379 416	361 149	391 686	386 333
H	Transportation and storage	316 847	309 858	165 967	179 571	150 880	130 287
I	Accommodation and food service activities	358 697	387 439	151 521	176 928	207 176	210 511
J	Information and communication	298 835	292 656	133 878	138 068	164 957	154 588
K	Financial and insurance activities	196 551	192 900	64 713	63 819	131 838	129 081
L	Real estate activities	281 281	294 311	61 406	68 038	219 875	226 273
M	Professional, scientific and technical activities	227 888	232 145	139 713	142 287	88 175	89 858
N	Administrative and support service activities	87 671	102 728	60 916	73 376	26 755	29 352
O	Public administration and defence; compulsory social security	404 940	381 523	148 010	135 217	256 930	246 306
P	Education	153 519	156 046	14 247	13 192	139 272	142 854
Q	Human health and social work activities	192 942	195 573	70 983	71 196	121 959	124 377
R	Arts, entertainment and recreation	93 281	105 717	53 474	66 883	39 807	38 834
S+T	Other service activities; Activities of households as employers; undifferentiated goods-and services-producing activities of households for own use	41 373	41 783	21 736	19 650	19 637	22 133
U	Activities of extraterritorial organisations and bodies
Total		5 295 363	5 206 189	2 590 695	2 570 575	2 704 668	2 635 614
Taxes on products less subsidies on products						529 392	513 243
GROSS DOMESTIC PRODUCT (current prices)						3 234 060	3 148 857

Graph 1: Share of intermediate consumption and gross value added in gross output (%), 2012

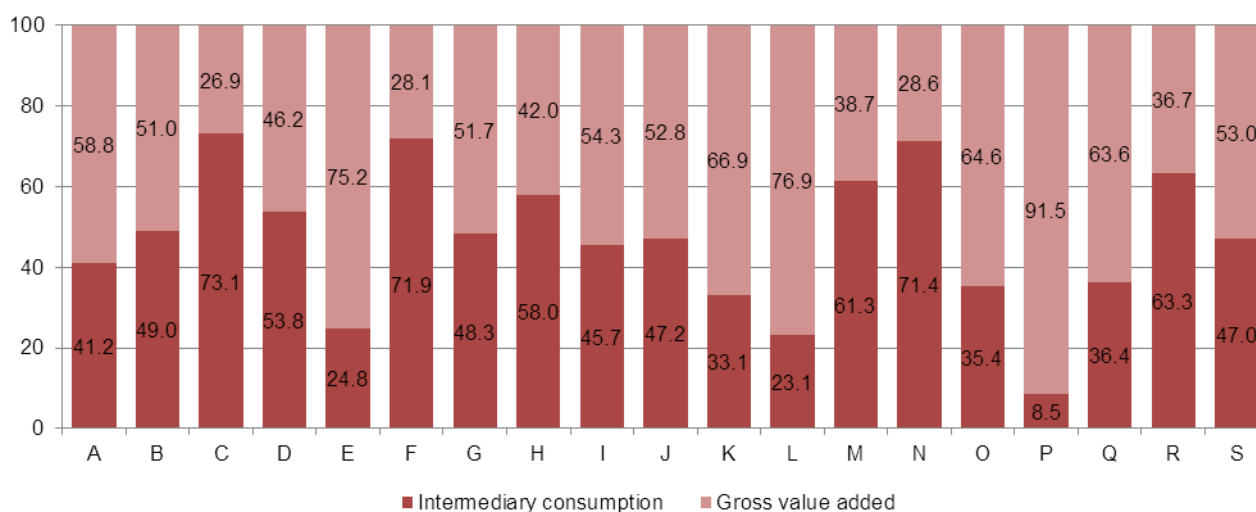
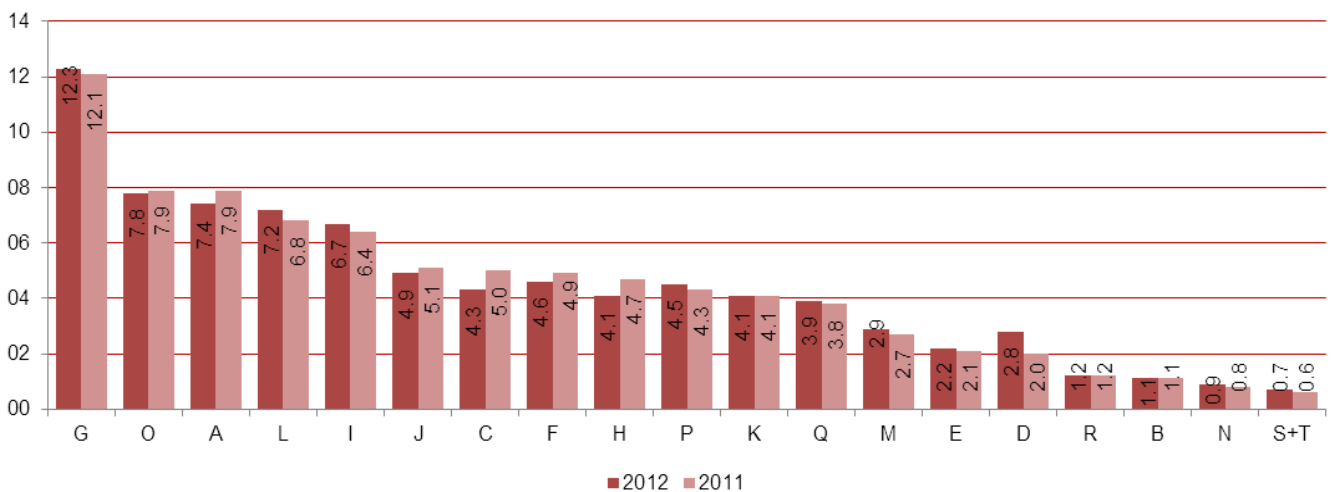


Table 2: Index of nominal growth, structure of gross value added and gross domestic product at current prices, 2011 - 2012

Classification of activities		Gross value added (in thous. EUR)		Index of nominal growth ¹	GDP structure (%)	
		2011	2012		2011	2012
A	Agriculture, forestry and fishing	256 726	232 012	90.4	7.9	7.4
B	Mining and quarrying	35 725	33 591	94.0	1.1	1.1
C	Manufacturing	162 535	135 462	83.3	5.0	4.3
D	Electricity, gas, steam and air conditioning supply	65 424	89 708	137.1	2.0	2.8
E	Water supply; sewerage, waste management and remediation activities	67 230	68 862	102.4	2.1	2.2
F	Construction	158 081	145 192	91.8	4.9	4.6
G	Wholesale and retail trade; repair of motor vehicles and motorcycles	391 686	386 333	98.6	12.1	12.3
H	Transportation and storage	150 880	130 287	86.4	4.7	4.1
I	Accommodation and food service activities	207 176	210 511	101.6	6.4	6.7
J	Information and communication	164 957	154 588	93.7	5.1	4.9
K	Financial and insurance activities	131 838	129 081	97.9	4.1	4.1
L	Real estate activities	219 875	226 273	102.9	6.8	7.2
M	Professional, scientific and technical activities	88 175	89 858	101.9	2.7	2.9
N	Administrative and support service activities	26 755	29 352	109.7	0.8	0.9
O	Public administration and defence; compulsory social security	256 930	246 306	95.9	7.9	7.8
P	Education	139 272	142 854	102.6	4.3	4.5
Q	Human health and social work activities	121 959	124 377	102.0	3.8	3.9
R	Arts, entertainment and recreation	39 807	38 834	97.6	1.2	1.2
S+T	Other service activities; Activities of households as employers; undifferentiated goods-and services-producing activities of households for own use	19 637	22 133	112.7	0.6	0.7
U	Activities of extraterritorial organisations and bodies
Total		2 704 668	2 635 614	97.4	83.6	83.7
Taxes on products less subsidies on products		529 392	513 243	96.9	16.4	16.3
GROSS DOMESTIC PRODUCT (current prices)		3 234 060	3 148 587	97.4	100.0	100.0

Graph 2: GDP structure at current prices (%), 2012

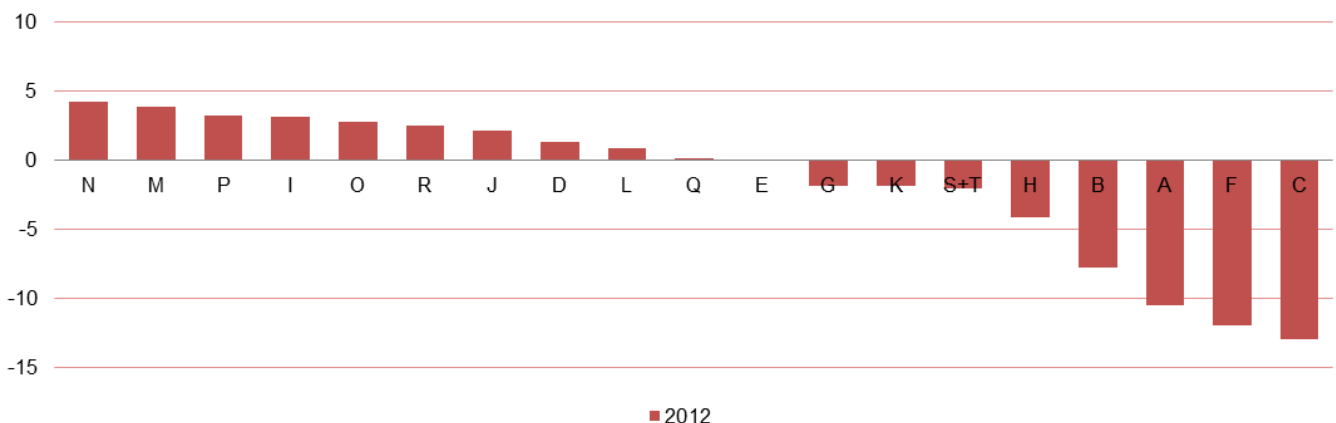


¹ Nominal growth rate = (GDP at current prices in current year / GDP at constant prices in current year) * 100

Table 3: Gross domestic product at current and constant prices with real growth rate, 2012

Classification of activities		Gross value added (in thous. EUR)			Real growth rate ² (%)
		Current prices 2010	Current prices 2011	Constant prices 2011	
A	Agriculture, forestry and fishing	256 726	232 012	229 831	-10.5
B	Mining and quarrying	35 725	33 591	32 957	-7.7
C	Manufacturing	162 535	135 462	141 571	-12.9
D	Electricity, gas, steam and air conditioning supply	65 424	89 708	66 340	1.4
E	Water supply; sewerage, waste management and remediation activities	67 230	68 862	67 271	0.1
F	Construction	158 081	145 192	139 269	-11.9
G	Wholesale and retail trade; repair of motor vehicles and motorcycles	391 686	386 333	384 657	-1.8
H	Transportation and storage	150 880	130 287	144 726	-4.1
I	Accommodation and food service activities	207 176	210 511	213 826	3.2
J	Information and communication	164 957	154 588	168 552	2.2
K	Financial and insurance activities	131 838	129 081	129 519	-1.8
L	Real estate activities	219 875	226 273	221 854	0.9
M	Professional, scientific and technical activities	88 175	89 858	91 656	3.9
N	Administrative and support service activities	26 755	29 352	27 914	4.3
O	Public administration and defence; compulsory social security	256 930	246 306	264 124	2.8
P	Education	139 272	142 854	143 868	3.3
Q	Human health and social work activities	121 959	124 377	122 255	0.2
R	Arts, entertainment and recreation	39 807	38 834	40 784	2.5
S+T	Other service activities; Activities of households as employers; undifferentiated goods-and services-producing activities of households for own use	19 637	22 133	19 254	-2.0
U	Activities of extraterritorial organisations and bodies
Total		2 704 668	2 635 614	2 650 228	-2.0
Taxes on products less subsidies on products		529 392	513 243	501 499	-5.3
GROSS DOMESTIC PRODUCT		3 234 060	3 148 857	3 151 727	-2.5

Graph 3: Real growth rates (%), 2012



² Real growth rate = (GVA at constant prices in current year / GVA at current prices in previous year) * 100

Table 4: Structure of gross value added and gross domestic product at constant prices, 2012

Classification of activities		Gross value added (in thous. EUR)	GDP structure (%)
		2012	2012
A	Agriculture, forestry and fishing	229 831	7.3
B	Mining and quarrying	32 957	1.0
C	Manufacturing	141 571	4.5
D	Electricity, gas, steam and air conditioning supply	66 340	2.1
E	Water supply; sewerage, waste management and remediation activities	67 271	2.1
F	Construction	139 269	4.4
G	Wholesale and retail trade; repair of motor vehicles and motorcycles	384 657	12.2
H	Transportation and storage	144 726	4.6
I	Accommodation and food service activities	213 826	6.8
J	Information and communication	168 552	5.3
K	Financial and insurance activities	129 519	4.1
L	Real estate activities	221 854	7.0
M	Professional, scientific and technical activities	91 656	2.9
N	Administrative and support service activities	27 914	0.9
O	Public administration and defence; compulsory social security	264 124	8.4
P	Education	143 868	4.6
Q	Human health and social work activities	122 255	3.9
R	Arts, entertainment and recreation	40 784	1.3
S+T	Other service activities; Activities of households as employers; undifferentiated goods-and services-producing activities of households for own use	19 253	0.6
U	Activities of extraterritorial organisations and bodies
Total		2 650 228	84.1
Taxes on products less subsidies on products		501 499	15.9
GROSS DOMESTIC PRODUCT		3 151 727	100.0

Graph 4: GDP structure at constant prices (%), 2012

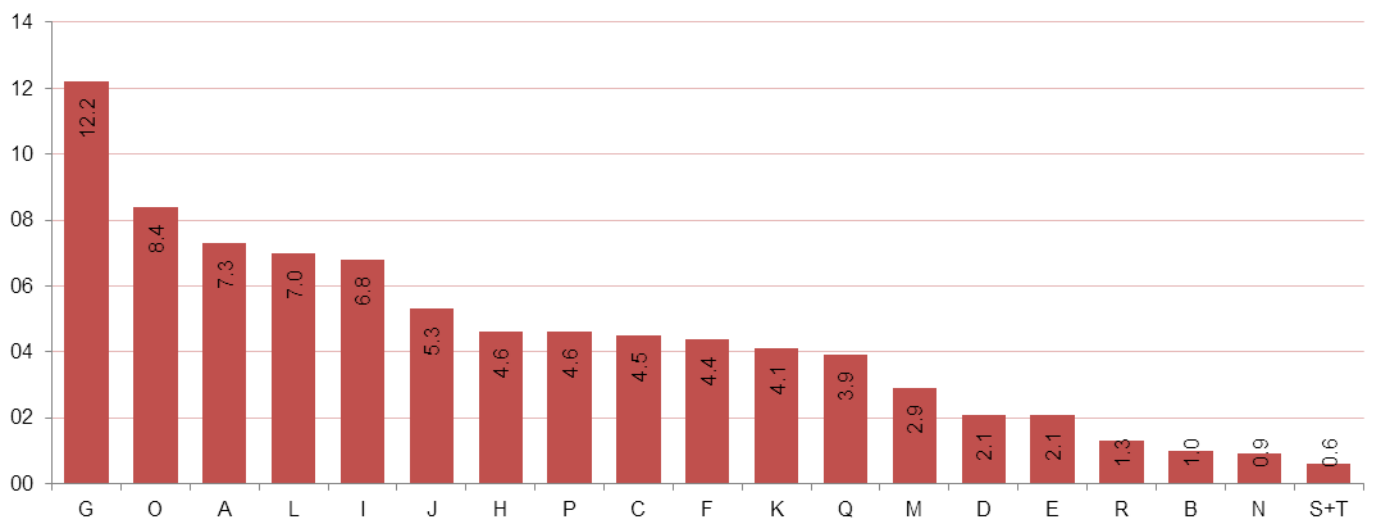


Table 5: Structure of gross domestic product by type of expenditure at current prices, 2011 - 2012

Expenditure categories		Value (in thous. EUR)		GDP structure (%)	
		2011	2012	2011	2012
1= (1.1+1.2)	Final consumption expenditure	3 362 682	3 311 077	104.0	105.2
1.1	Households final consumption expenditure (HFCE)	2 667 366	2 631 969	82.5	83.6
1.2 = (a+b)	Government final consumption expenditure (GFCE)	695 316	679 108	21.5	21.6
a)	<i>individual</i>	304 213	308 328	9.4	9.8
b)	<i>collective</i>	391 103	370 780	12.1	11.8
2	Gross fixed capital formation (GFCF)	596 453	583 824	18.4	18.5
3	Changes in inventories	-8 091	30 907	-0.3	1.0
4 = (4.1-4.2)	Net export / import	-716 984	-776 951	-22.1	-24.7
4.1= (a+b)	Exports of goods and services	1 382 597	1 389 430	42.7	44.1
a)	<i>export of goods</i>	476 547	391 861	14.7	12.4
b)	<i>export of services</i>	906 050	997 569	28.0	31.7
4.2= (a+b)	Import of goods and services	2 099 581	2 166 381	64.9	68.8
a)	<i>imports of goods</i>	1 782 793	1 781 065	55.1	56.6
b)	<i>imports of services</i>	316 788	385 316	9.8	12.2
5= (1+2+3+4)	GROSS DOMESTIC PRODUCT (current prices)	3 234 060	3 148 857	100.0	100.0

Graph 5: Structure of gross domestic product by type of expenditure at current prices (%)

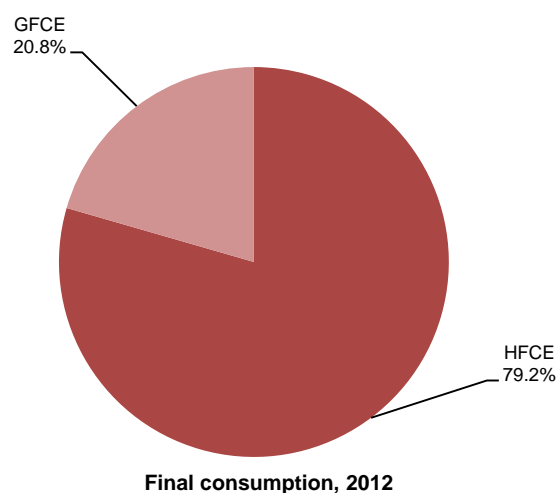
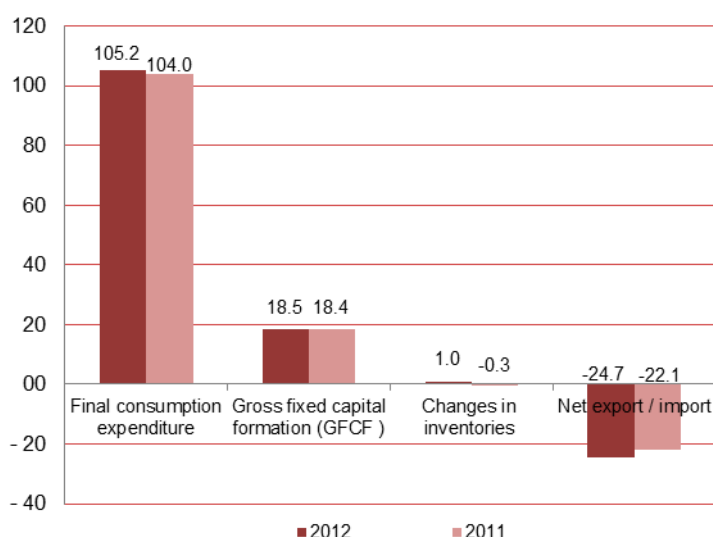
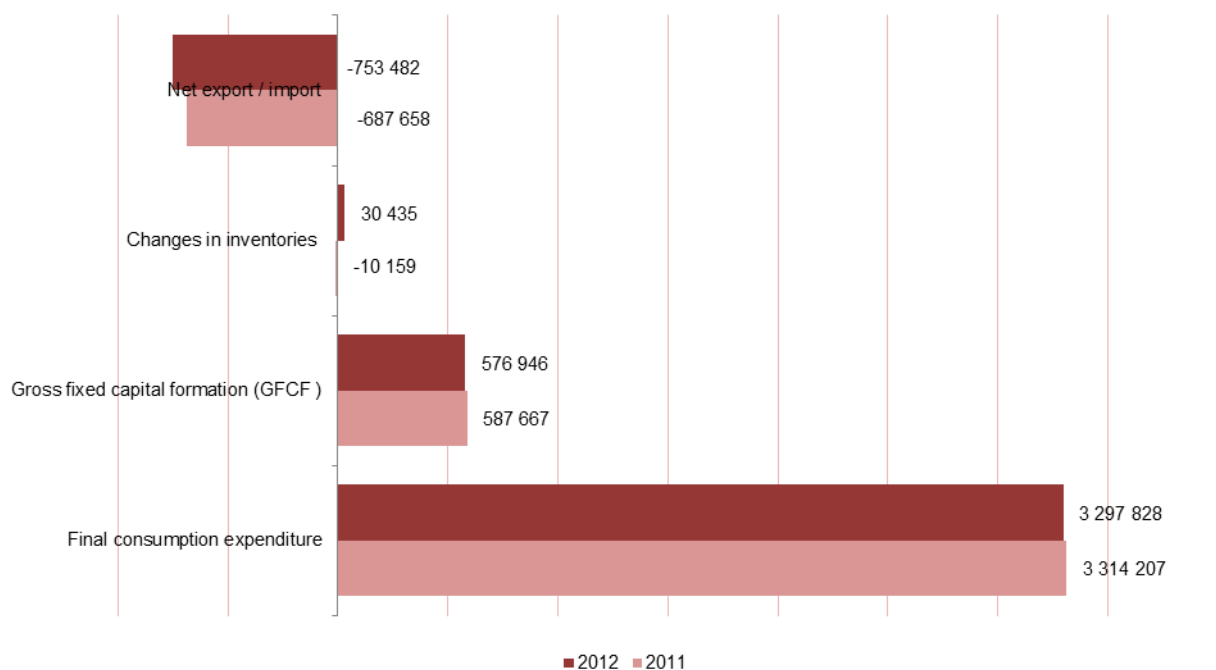


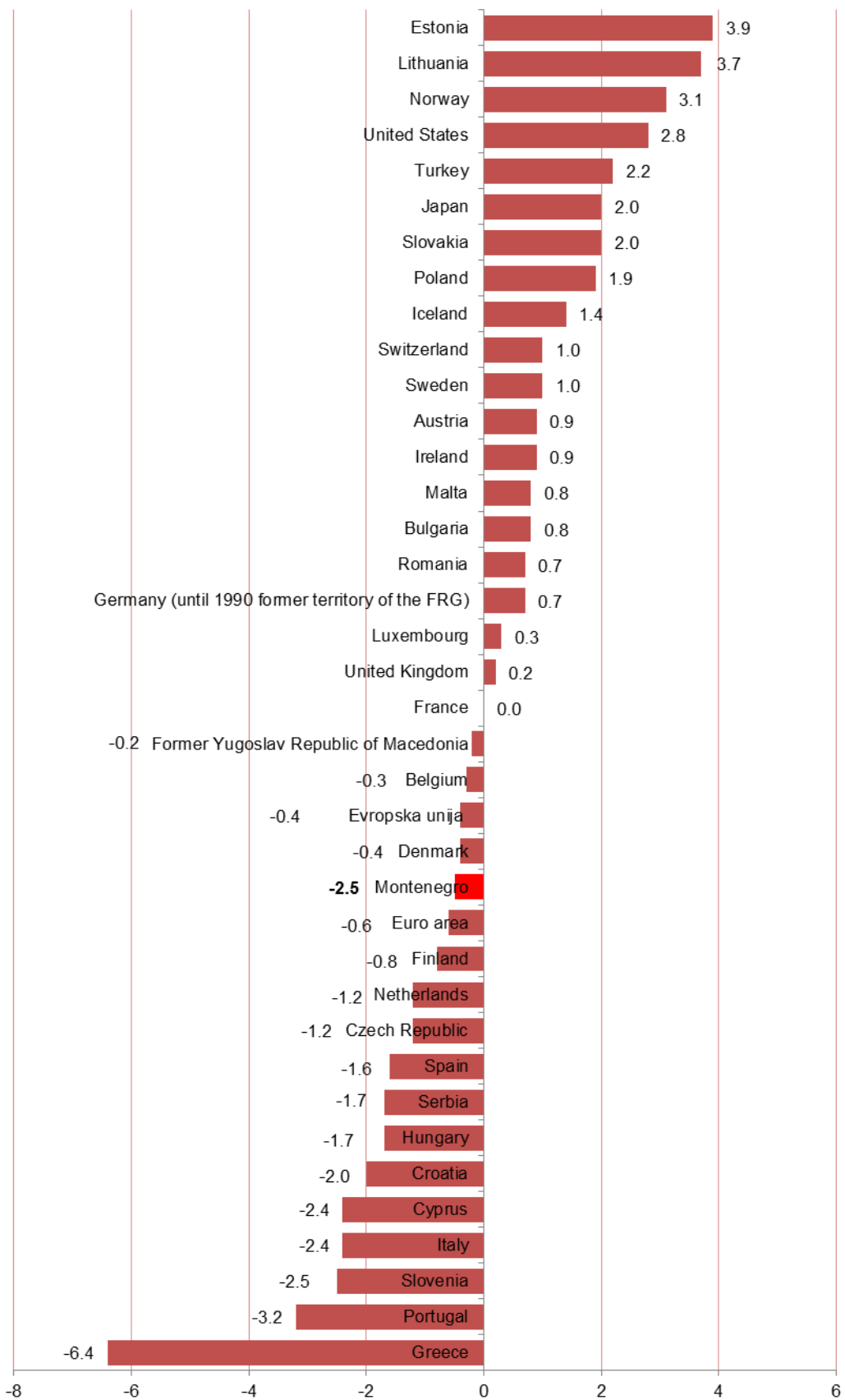
Table 6: Structure of gross domestic product by type of expenditure at constant prices, 2011 - 2012

Expenditure categories		Value (in thous. EUR)		GDP structure (%)	
		2011	2012	2011	2012
1= (1.1+1.2)	Final consumption expenditure	3 314 207	3 297 828	103.4	104.6
1.1	Households final consumption expenditure (HFCE)	2 598 904	2 581 088	81.1	81.9
1.2 = (a+b)	Government final consumption expenditure (GFCE)	715 303	716 740	22.3	22.7
a)	<i>individual</i>	327 631	312 731	10.2	9.9
b)	<i>collective</i>	387 672	404 009	12.1	12.8
2	Gross fixed capital formation (GFCF)	587 667	576 946	18.3	18.3
3	Changes in inventories	-10 159	30 435	-0.3	1.0
4 = (4.1- 4.2)	Net export / import	-687 658	-753 482	-21.4	-23.9
4.1= (a+b)	Exports of goods and services	1 294 786	1 365 831	40.4	43.3
a)	<i>export of goods</i>	438 406	403 855	13.7	12.8
b)	<i>export of services</i>	856 380	961 976	26.7	30.5
4.2= (a+b)	Import of goods and services	1 982 444	2 119 313	61.8	67.2
a)	<i>imports of goods</i>	1 673 984	1 757 514	52.2	55.8
b)	<i>imports of services</i>	308 460	361 799	9.6	11.5
5= (1+2+3+4)	GROSS DOMESTIC PRODUCT (constant prices)	3 204 057	3 151 727	100.0	100.0

Graph 6: Expenditure categories at constant prices. in thous. EUR, 2011 – 2012



Graph 7: Comparative review of real growth rates of GDP (%), 2012



Data on real growth rates of GDP are published by Eurostat and can be found on the website: <http://epp.eurostat.ec.europa.eu/tgm/table.do?tab=table&init=1&plugin=1&language=en&pcode=tec00115>

METHODOLOGICAL NOTES

Methodological concepts. definitions and classifications

Applied methodology is harmonized with the System of National Accounts (SNA'93) and European system of accounts (ESA'95).

Gross domestic product (GDP) measures the total value of the goods and services produced by resident institutional units.

MONSTAT compile GDP by production and expenditure approaches which are mutually independent.

The GDP calculation includes all activities within the production frame defined by SNA'93 and ESA'95 methodologies and covers the whole territory of Montenegro.

The estimate of non-observed economy for legal part of economy is partially included in compilation of GDP.

The following illegal activities drugs. prostitution. sex - trafficking. illegal selling of CDs. video tapes. illegal use of software. smuggling of weapons. etc. are not included in GDP estimation.

The classification of economic units by activity is in line with the national Classification of Activities that is harmonized with the Classification of Economic Activities in the European Community (NACE Rev.2).

Compilation methodology

Production approach

The main categories of GDP compilation by production approach are:

Gross output is defined as a market value of produced goods and services. It is calculated by activities at approximate basic prices. since all subsidies are treated as subsidies on products and included into calculation on the level of national economy.

Intermediate consumption at purchase prices is the value of goods and services. which are transformed. used and consumed in the production process.

Gross value added is the value of gross output less the value of intermediate consumption.

Gross domestic product at market prices is the value of all goods and services produced by resident units. i.e.. the sum of gross value added by activities and taxes on products less subsidies on products.

In compilation of intermediate consumption by activities is included the value of financial intermediation services indirectly measured (FISIM) which increase level of harmonization of GDP compilation in line with European standards.

Current prices

Gross value added calculation at current prices is mostly based on Annual Financial Reports of Enterprises (Income Statements and Statistical Annex) and results from regular statistical surveys.

The data quality of annual Financial Reports was checked and partially corrected on the basis of data from statistical surveys in agriculture, industry, construction, wholesale and retail trade, tourism, transport and other statistics.

Additionally, it was used administrative data obtained from Central Bank of Montenegro, Tax authorities, Customs administration and Ministry of Finance.

The used data were adjusted according to the requirements of SNA'93 and ESA'95 methodologies, while in certain cases particularly estimation were made on the basis of available data.

Constant prices

GDP calculation by production approach is also done at constant prices. For section Agricultural, forestry and fishing compilation at constant prices is done by double deflation method and for all others sections calculation is done by applying single extrapolation method.

Expenditure approach

Current prices

The GDP compilation by expenditure approach at current prices is based on the data from regular surveys of MONSTAT, Ministry of Finance, Central Bank of Montenegro.

Final consumption expenditure of households was calculated on the basis of data from regular statistical surveys of MONSTAT as well as on data from various administrative sources. The main data source is Household Budget Survey (HBS). COICOP classification on 4-digit level is applied. Commodity flow approach is used for estimation of final consumption expenditure of households which represent balance of all goods and services flows that are produced and imported from one side and used and exported on the other side.

Data on Government expenditures were based on data from Ministry of Finance and Budgetary Report of Montenegro. Individual Government final consumption includes expenditures on Education, Health, Social security and welfare and Sport, culture and recreation. Remained expenditures of the government are related to collective consumption (general public services, military and civil defence with ministry, residential and communal services, etc).

Gross fixed capital formation data for corporate enterprises are compiled by Commodity flow approach and using data from regular MONSTAT survey: Annual survey on investments in fixed assets. Gross fixed capital formation for the unincorporated sector (construction, agriculture, etc.) was estimated on the basis of available data from regular statistical surveys.

Data on exports and imports of services are based on the Balance of Payment data of Central Bank of Montenegro. Data on exports and imports of goods are based on the Monstat data from external trade statistics following special trade system.

Constant prices

GDP calculation by expenditure approach is also done at constant prices. On the basis of available data it is carried out extrapolation method for expenditure component: Government final consumption expenditure and for others expenditure components calculation is done by applying deflation method.

Circulation: 30 copies

Published and printed by Statistical Office of Montenegro - MONSTAT
81000 Podgorica. IV Proleterske 2. phone (+382) 20 230-811. fax (+382) 20 230-814

Release prepared by:

Department of macroeconomic statistics and national accounts
tel/fax +382-20-230 937
Web: www.monstat.org
email: contact@monstat.org