



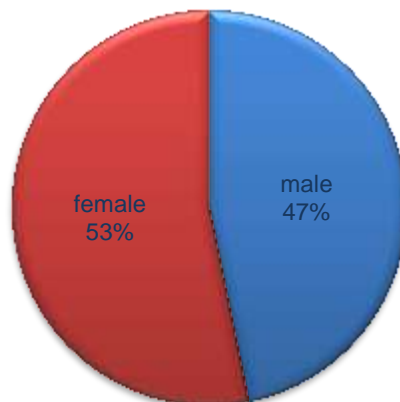
When using these data
please name the source

Internal migrations in Montenegro in 2011

The purpose of internal migration statistics is providing data needed for analysis of mechanical movement of population. These data are used in statistics for calculation estimated number of population, as well as for net migration which indicates change of population number by municipalities in Montenegro. Net migration of internal migration is zero which means that there is no change in total number of population in Montenegro when person changes place of residence within Montenegrin borders.

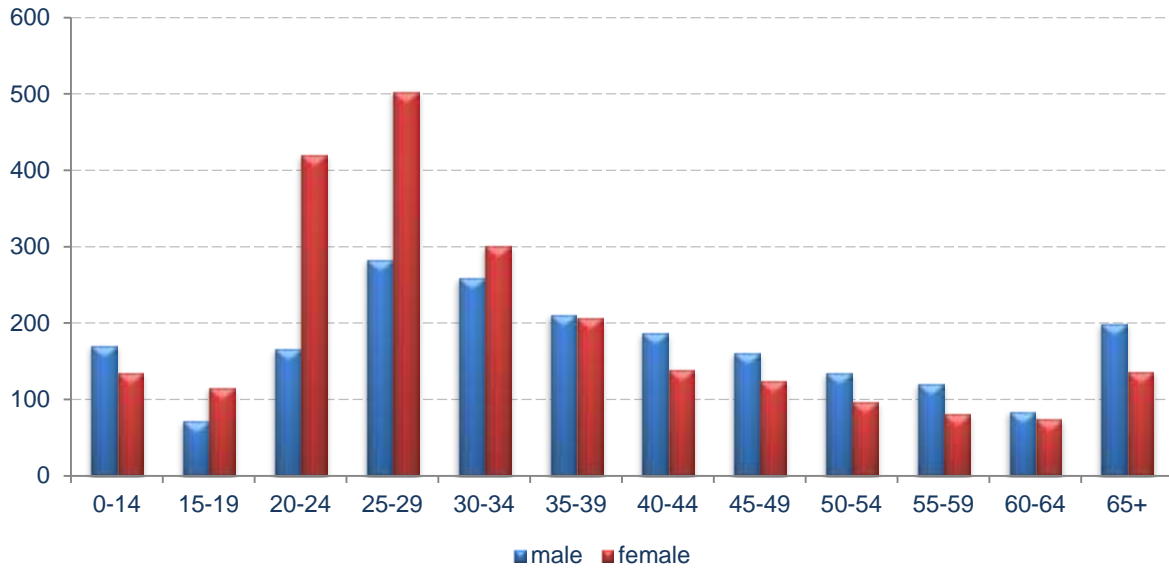
Total number of population who changed their place of residence within borders of country is 4 394, that makes 0.7% from total number of inhabitants of Montenegro which is 620 029 persons.

Graph 1. Internal migrations in Montenegro by sex



- *Total number of population who moved within Montenegrin borders in 2011 is 4 394 inhabitants;*
- *Majority of that population are women with 53.2% or 2 339 while men are 46.8% from total number, i.e. 2 055 inhabitants.*

Graph 2. Internal migrations by age and sex



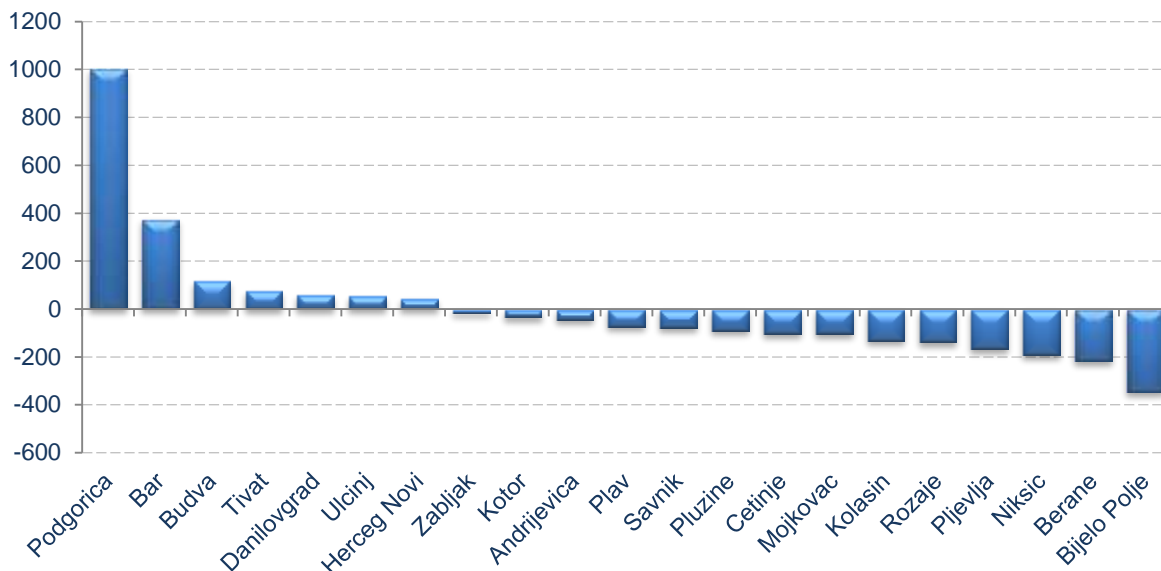
- We can see from data that female population move more than male and that difference is 284 persons;
- This difference and majority of women is mainly because of population 15-34 years old and in any other age group men are majority;
- The highest difference where majority are women is in population 20-24 years old and that number is 254, and related to men that majority is age group over 65 and difference is 63 inhabitants.

Table 1. Internal migrations by type of settlement

Moving out (type of settlement)	Moving in (type of settlement)				
	total	urban	%	other	%
total	4 394	4 322	98.4	72	1.6
urban	3 671	3 613	98.4	58	1.6
other	723	709	98.1	14	1.9

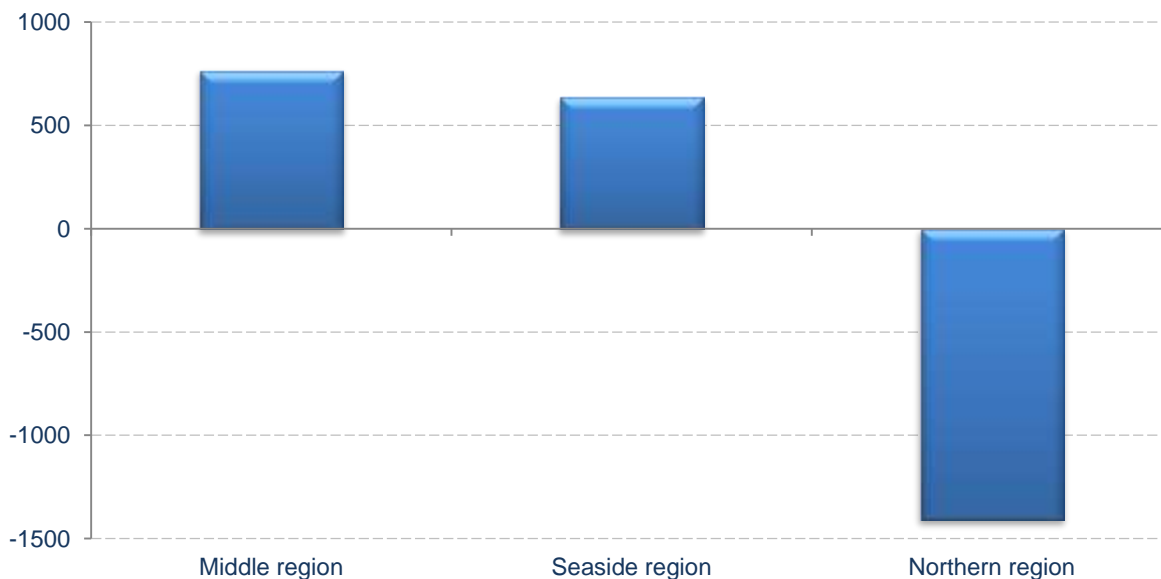
- From total number of persons who moved, 98.4% or 4 322 inhabitants moved to urban area, while only 1.6% or 72 inhabitants moved to other settlements;
- From total number of persons who moved from urban settlements type, only 1.6% or 58 inhabitants moved to other settlements;
- From total number of persons who moved from other settlement types only 1.9% or 14 inhabitants moved to other settlements type.

Graph 3. Net migrations by municipalities in 2011



- In 2011 positive net migration was recorded in 7 municipalities, and difference between inhabitants who moved in and moved out is highest in Podgorica and it is 1004, while the highest negative net was recorded in Bijelo Polje and it is 345 persons.

Graph 4. Net migrations by regions in 2011



- In each town on the north of Montenegro it is recorded net negative migration and it is 1407 persons;
- Positive net migration is recorded in other two Montenegrin regions, and it is higher in Middle region and it is 768 persons, while in Seaside region it is slightly less and it is 639 persons.

METHODOLOGICAL NOTES

Sources and methods of data collection

Within Statistics of migration there are covered internal and external migrations. Internal migrations are related to moving of population within borders of Montenegro. Data on internal migration are submitted from Register of residence in the competence of Ministry of Internal Affairs. Collected data are based on the agreement between Statistical Office of Montenegro and Ministry of Internal Affairs. Characteristics needed for making of internal migration data are following:

- Date of registration of residence;
- Gender;
- Age;
- Place of birth (municipality where person was born in Montenegro or other country – code and name);
- Educational attainment degree;
- Occupation;
- Marital status;
- Residence where person is registered in (code and name of settlement and municipality);
- Residence from which the person is cancelled (code and name of settlement and municipality).

Coverage

Observation units are individual migration events (immigrations and emigrations) within Montenegrin borders.

Definitions

Migration or moving of population is spatial movement of population from previous place of residence to other place.

Migrant is person who changed place of residence within borders of Montenegro.

Moved in person is person who registered place of residence in certain place in Montenegro and her/his previous place of residence was in some other place in Montenegro.

Move out person is person who cancelled residence from certain place in Montenegro with the intention to register it in some other place in Montenegro.

Migration population balance (net migration) is difference between number of immigrated and number of emigrated persons from certain areas or certain countries in some period of time. If number of immigrated is higher than number of emigrated persons we talk about positive migration balance, actually mechanical increase of number of population, and if there is more persons who moved out than immigrated, here it is about negative migration balance, i.e. mechanical decrease of number of population of given area or state.

Seaside region are municipalities: Bar, Budva, Herceg Novi, Kotor, Tivat and Ulcinj.

Middle region are: capital Podgorica, old capital Cetinje and municipalities Danilovgrad and Niksic.

Northern region are municipalities: Andrijevisa, Berane, Bijelo Polje, Kolasin, Mojkovac, Plav, Pljevlja, Pluzine, Rozaje, Savnik and Zabljak.

***Published and printed by Statistical Office of Montenegro - MONSTAT
81000 Podgorica, IV Proleterske 2, Phone (+382) 20 230 811, Fax (+382) 20 230 814***

***Release prepared by:
Zdenka Brajovic and Boris MURATOVIC
contact@monstat.org***