



Montenegro

A DECADE  
OF INDEPENDENCE  
A MILLENNIUM  
OF STATEHOOD  
MONTENEGRO  
2016



May Montenegro live forever

Government of Montenegro  
Statistical Office of Montenegro

## Release

### Investments in fixed capital for 2015

Data on investments in fixed capital of legal entities in Montenegro for 2015 in current prices are published in this release. Data on investments are result of survey "Annual Report on Investments into fixed capital" (INV-01) and methodology used is harmonized with European System of national Accounts (ESA 2010). Data are presented according to organizational principle (investments are sorted by the seat and activity of the investor), and they are presented on sector level according to Classification of activities 2010 (KD 2010).

Investments in fixed capital in Montenegro in 2015 are 549.8 million EUR, while in 2014 they were 510.0 million EUR.

Investments in current prices, in € thousand



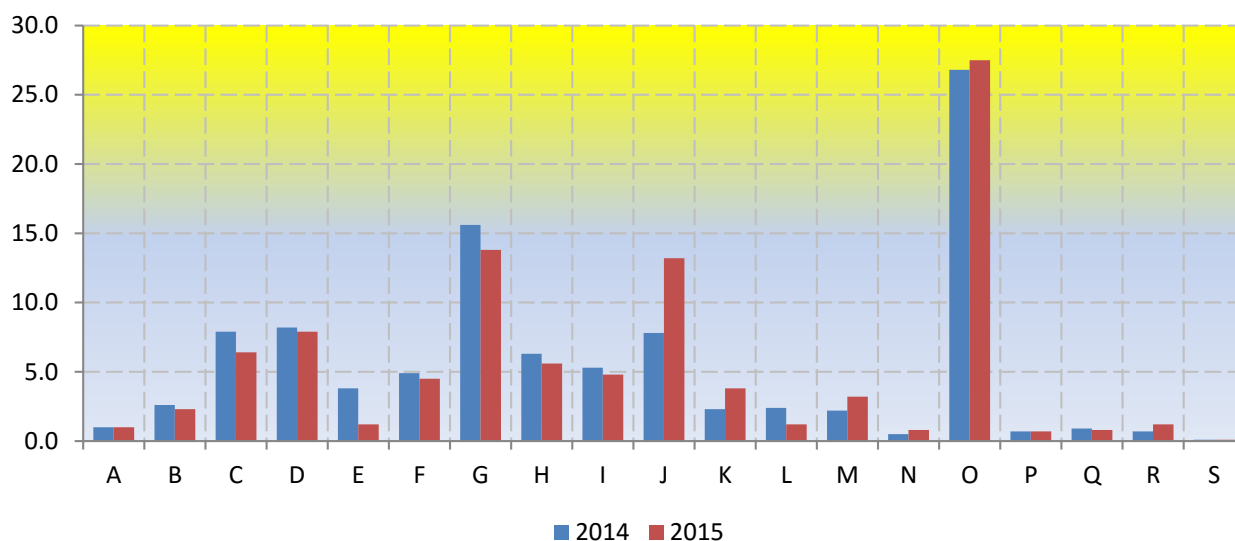
*In € thousand*

<b>Investments in fixed capital, current prices</b>	<b>2014</b>	<b>2015</b>
<b>TOTAL</b>	<b>510 029</b>	<b>549 804</b>
Construction works	287 662	290 505
Equipment	188 336	213 249
Other	34 031	46 050

*In € thousand*

<b>Realized investments into fixed capital according to investors activity</b>	<b>2014</b>	<b>2015</b>
<b>TOTAL</b>	<b>510 029</b>	<b>549 804</b>
A Agriculture, forestry and fishing	5 252	5 593
B Mining and quarrying	13 357	12 409
C Manufacturing	40 075	35 005
D Provision with electric energy, gas, steam and air conditioning	41 764	43 335
E Provision with water, waste water management	19 247	6 733
F Construction	25 180	24 520
G Retail and sale trade, repair of motor vehicle	79 750	76 041
H Transport and storage	32 333	30 581
I Accommodation and alimentation services	27 066	26 553
J Information and communication	39 829	72 467
K Financial activities an insurance activities	11 459	20 963
L Real estate activities	12 325	6 708
M Professional, scientific and technical activities	11 112	17 843
N Administrative and supporting service activities	2 390	4 527
O Public administration and defence, compulsory social insurance	136 682	151 018
P Education	3 621	3 971
Q Health and Social Insurance	4 701	4 539
R Art, entertainment and recreation	3 478	6 566
S Other service activities	409	432

## Structure of investments in current prices, in %



In %

### Structure of realized investments into fixed capital according to investors activity, current prices

2014

2015

	2014	2015
<b>TOTAL</b>	<b>100.0</b>	<b>100.0</b>
A Agriculture, forestry and fishing	1.0	1.0
B Mining and quarrying	2.6	2.3
C Manufacturing	7.9	6.4
D Provision with electric energy, gas, steam and air conditioning	8.2	7.9
E Provision with water, waste water management	3.8	1.2
F Construction	4.9	4.5
G Retail and sale trade, repair of motor vehicle	15.6	13.8
H Transport and storage	6.3	5.6
I Accommodation and alimentation services	5.3	4.8
J Information and communication	7.8	13.2
K Financial activities an insurance activities	2.3	3.8
L Real estate activities	2.4	1.2
M Professional, scientific and technical activities	2.2	3.2
N Administrative and supporting service activities	0.5	0.8
O Public administration and defence, compulsory social insurance	26.8	27.5
P Education	0.7	0.7
Q Health and Social Insurance	0.9	0.8
R Art, entertainment and recreation	0.7	1.2
S Other service activities	0.1	0.1

## METHODOLOGICAL EXPLANATION

### Source of data

Data on investments are collected with special "Annual Report on investments in fixed capital" (INV-01) from legal persons in country if they are direct investors. For survey INV-01 data are collected on a random stratified sample and stratification is based on sections of Classification of Activities 2010 (KD 2010) and the class of number of employees. All large and medium-sized enterprises are covered with this survey, while small enterprises are selected by random sampling. Questionnaire INV-01 was partially changed from 2006 and adjusted to international statistical standards and methodologies, i.e. European System of National Accounts (ESA 2010).

### Coverage

For collection and publication for professional purpose Classification of Activities KD 2010 is used and data are published at sector level.

Data are grouped according to organizational principle:

- According to the main activity and the seat of investor.

### Definitions

Investments in fixed capital are purchases made by business entities in order to acquire new assets, increase the values of or replace existing fixed assets (dwelling buildings, other buildings and structures, machinery and equipment, cultivated biological resources and intellectual property products: research and development, mineral exploration and evaluation, computer software and databases, entertainment, literary or artistic originals and other intellectual property products).

Realized investment during the reference year is the value of actual construction, building or procurement of facilities, equipment etc., regardless of whether they are completed or not and payment made.

Acquired investments goods can be new or already used, purchased or received with no compensation from others in the country or abroad or self-produced. All investments into new capacity extensions, reconstruction and modernization of existing or replacement of old ones, ruined capacities are included. Investments do not cover expenditures spent for regular and current maintenance of existing infrastructure.

Release No. 144

Podgorica, 29 July 2016

*Published and printed by Statistical Office of Montenegro - MONSTAT*  
*81000 Podgorica, IV Proleterske 2, Phone (+382) 20 230 811, Fax (+382) 20 230 814*

*Release prepared by:*

**Radojka BOJIĆ**

**Phone +382-20-230 805**

*e-mail:* [contact@monstat.org](mailto:contact@monstat.org)

When using these data please indicate the source
---