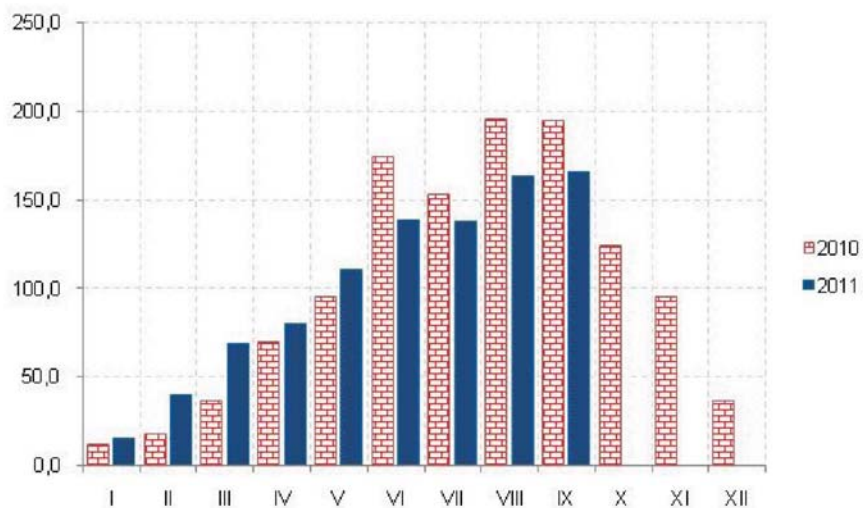


ŠUMARSTVO / FORESTRY



Ø 2010 = 100

	Indeks Index	Ukupno Total	Proizvedeni sortimenti, m³ / Production of forests assortments						
			Četinara / Conifers				Lišćara / Deciduous trees		
			trupci Saw logs	tehničko drvo Lumber	prostorno drvo Space wood	ogrijevno drvo Firewood	trupci Saw logs	prostorno drvo Space wood	ogrijevno drvo Firewood
2006	130.3	325896	194057	11808	12798	1334	46736	15406	43754
2007	105.0	263787	151440	8878	12623	367	45000	14388	31091
2008	113.0	281260	160901	13090	17492	861	46467	9655	32794
2009	85.7	216546	128520	6525	10992	2149	29121	5748	33491
2010	100.0	256410	146074	10373	19993	504	32851	6349	40266
Ø I - IX 2010	122.5	201009	113481	8097	14804	488	28336	4357	31446
Ø I - IX 2011	102.2	204351	99713	4712	24350	281	35415	7118	32762
2010									
IX	194	42465	23209	1791	3471	3	5278	579	8134
X	123.9	26630	15554	1114	2011	1	2679	1112	4159
XI	95	20923	12269	890	2270	1	1412	722	3359
XII	36.3	7848	4770	272	908	14	424	158	1302
2011									
I	15.3	2955	2088	93	353	-	254	1	166
II	39.8	8166	5396	333	1864	-	333	54	186
III	69.2	14098	8280	430	2377	-	1864	358	789
IV	79.7	16910	9307	507	3402	28	2250	365	1051
V	110.8	24223	12153	680	3299	34	4348	750	2959
VI	138.3	31537	14736	694	396.3	60	5458	1165	5461
VII	137.5	31990	13086	651	2767	61	6983	1443	6999
VIII	163.3	37742	16055	585	3222	67	7707	1581	8525
IX	165.5	36730	18612	739	3103	31	6218	1401	6626
I – IX 2011/I – IX 2010	93.4	101.7	87.9	58.2	1645	57.6	125	163.4	104.2