

ZAVOD ZA STATISTIKU CRNE GORE
STATISTICAL OFFICE OF MONTENEGRO

GODINA LIX / YEAR (59)

ISSN 0354-365X

MJESEČNI STATISTIČKI PREGLED
MONTHLY STATISTICAL REVIEW

2011
10

PODGORICA, 2011

IZDAJE I ŠTAMPA: Zavod za statistiku Crne Gore - MONSTAT
PUBLISHED AND PRINTED BY: Statistical Office of Montenegro - MONSTAT

ODGOVARA: mr Gordana Radojević, direktor
RESPONSIBLE: Gordana Radojević, M.Sc., Director

Podgorica, IV Proleterske br. 2, Tel: +382 20 230-811
E-mail: statistika@monstat.org Web Site: www.monstat.org

CIP – Katalogizacija u publikaciji
Centralna narodna biblioteka Crne Gore, Cetinje
311 / 314

Mjesečni statistički pregled = Monthly
Statistical review. Urednik dr Božidar Popović. – God.
1, br.1 (1953) – . - Podgorica (IV Proleterske br. 2)
Zavod za statistiku Crne Gore – Monstat, 1992 (Podgorica:
Zavod za statistiku Crne Gore) . – 30 cm

Mjesečno. – je nastavak: Mjesečni statistički pregled
NR Crne Gore (Titograd) = ISSN 0544-912X
ISSN 0354-365X = Mjesečni statistički pregled (Podgorica)
COBISS. CG ID 07622928

UVOD

U MJESEČNOM STATISTIČKOM PREGLEDU Zavod za statistiku – MONSTAT objavljuje podatke za Crnu Goru. To su službeni statistički podaci koji se prikupljaju i obrađuju u skladu sa programom statističkih istraživanja i rezultat su rada zvaničnih statističkih službi.

Statistički podaci u MJESEČNOM STATISTIČKOM PREGLEDU prikazani su u godišnjim, kvartalnim i mjesečnim serijama i sistematizovani su u dva dijela. Godišnje serije obuhvataju tri do pet posljednjih uzastopnih godina. Kvartalne serije se odnose na kvartale u prošloj i tekućoj godini, a mjesečne serije obuhvataju period od trinaest mjeseci iz tekuće i prethodne godine. Ispod odgovarajućih tabela, gdje je potrebno, daju se kratka objašnjenja.

Pored podataka koje prikuplja i obrađuje Zavod za statistiku Crne Gore - MONSTAT, u MJESEČNOM STATISTIČKOM PREGLEDU se objavljuju i podaci Zavoda za zapošljavanje i Centralne Banke Crne Gore.

Podaci za tekuću godinu su obično prethodni, pa su moguće manje greške koje se postepeno ispravljaju u narednim brojevima i obilježavaju se zvjezdicom, u onom broju PREGLEDA u kojem je izvršena ispravka.

Sadržaj publikacije je prilagođen međunarodnim potrebama i obavezama u smislu primjene Klasifikacije djelatnosti (NACE Rev1), koja se primjenjuje od 01.01.2001. godine.

Od januara 2008. godine MJESEČNI STATISTIČKI PREGLED je obogaćen novim sadržajima i preveden je na engleski jezik.

INTRODUCTION

Statistical Office of Montenegro publishes statistical data for Montenegro in the MONTHLY STATISTICAL REVIEW. These are the official statistical data collected and processed according to the Programme of Statistical Surveys as the result of official statistical services.

Statistical data in the MONTHLY STATISTICAL REVIEW are presented in annual, quarterly and monthly series and are systemized in two parts. The Annual series of data cover 3-5 last consecutive years. Quarterly series refer to quarters in the previous and current year, and monthly series include period of thirteen months from the previous and current year. Where necessary, short explanations are given below the tables.

In addition to the data collected and processed by the Statistical Office of Montenegro - MONSTAT, MONTHLY STATISTICAL REVIEW also publishes the data of Employment Agency of Montenegro, and Central Bank of Montenegro.

Data for the current year are usually preliminary, so minor errors are possible and are gradually corrected in the following numbers, and they are marked with the small star in the number of the MONTHLY STATISTICAL REVIEW where the correction has been made.

The contents of the publication is adapted to the international needs and obligations regarding the application of the Classification of Activities (NACE, REV1), used since January 2001.

Since January 2008, the MONTHLY STATISTICAL REVIEW contains new contents and has been translated into English language.

ZNACI

SYMBOLS

nema pojave	=	—	=	No occurrence of event
ne raspolaže se podatkom	=	...	=	Data not available
podatak je manji od 0,5 date jedinice mjere	=	0	=	Value not zero but less than 0,5 of the unit of E
prosjeak	=	Ø	=	Average
ispravljen podatak	=	*	=	Corrected data
nepotpun, odnosno nedovoljno provjeren podatak	=	()	=	Incomplete or insufficiently checked data

SADRŽAJ

UVOD	3
SADRŽAJ	5
OPŠTI PREGLED INDEKSA	
Kvartalni indeksi	7
Mjesečni indeksi	8
STANOVNIŠTVO	
Prirodno kretanje stanovništva	10
Prirodno kretanje stanovništva po opštinama	11
Kretanje stanovništva unutar Crne Gore po opštinama	12
ZAPOSLENOST I ZARADE	
Zaposleni po sektorima djelatnosti	13
Zaposleni po opštinama	14
Nezaposlena lica	15
Prosječne zarade po sektorima djelatnosti	16
Prosječne zarade bez poreza i doprinosa po sektorima djelatnosti	17
Indeksi prosječnih zarada po sektorima djelatnosti	18
Indeksi prosječnih zarada bez poreza i doprinosa po sektorima djelatnosti	19
Prosječne zarade po opštinama	20
Prosječne zarade bez poreza i doprinosa po opštinama	21
CIJENE	
Indeksi cijena proizvođača industrijskih proizvoda	22
Indeksi potrošačkih cijena po grupama proizvoda	24
Indeksi potrošačkih cijena	26
ŠUMARSTVO	27
INDUSTRIJA	
Indeksi industrijske proizvodnje po sektorima	28
Indeksi industrijske proizvodnje po podsektorima	29
GRAĐEVINARSTVO	
Vrijednost izvršenih i ugovorenih radova, broj zaposlenih i izvršeni efektivni časovi	31
SPOLJNA TRGOVINA	
Izvoz i uvoz po zemljama	32
Izvoz i uvoz robe	33
UNUTRAŠNJA TRGOVINA	
Promet u trgovini na malo	36
Prodaja i otkup proizvoda poljoprivrede, šumarstva i ribarstva	37
UGOSTITELJSTVO	
Promet u ugostiteljstvu	38
TURIZAM	
Dolasci i noćenja turista po zemljama i vrsti mjesta	39
Dolasci i noćenja gostiju po vrstama turističkih mjesta	40
Broj dolazaka i noćenja turista	40
SAOBRAĆAJ, SKLADIŠTENJE I VEZE	
Željeznički saobraćaj	41
Drumski saobraćaj	42
Vazdušni saobraćaj	43
Pomorski saobraćaj	44
PTT saobraćaj	44
MONETARNI AGREGATI I PLATNI BILANS	45
METODOLOŠKA OBJAŠNJENJA	47

CONTENTS

INTRODUCTION	3
CONTENTS	5
SUMMARY OF INDICES	
<i>Quarterly indices</i>	<i>7</i>
<i>Monthly indices</i>	<i>8</i>
POPULATION	
<i>Natural population changes</i>	<i>10</i>
<i>Natural population changes by municipality</i>	<i>11</i>
<i>Migrations inside Montenegro by municipality</i>	<i>12</i>
EMPLOYMENT AND WAGES	
<i>Employees by activity sectors</i>	<i>13</i>
<i>Employees by municipality</i>	<i>14</i>
<i>Unemployed persons</i>	<i>45</i>
<i>Average wages by activity sectors</i>	<i>16</i>
<i>Average wages without taxes and contributions by activity sector</i>	<i>17</i>
<i>Indices of average wages by activity sector</i>	<i>18</i>
<i>Indices of average wages without taxes and contributions by activity sector</i>	<i>19</i>
<i>Average wages by municipality</i>	<i>20</i>
<i>Average wages without taxes and contributions by municipality</i>	<i>21</i>
PRICES	
<i>Producers price indices for industrial products</i>	<i>22</i>
<i>Retail by groups of products</i>	<i>24</i>
<i>Consumer prices index</i>	<i>26</i>
FORESTRY	27
INDUSTRY	
<i>Indices of industrial production by sectors</i>	<i>28</i>
<i>Indices of industrial production by subsectors</i>	<i>29</i>
CONSTRUCTION	
<i>Value of finalized and ordered works, number of employees and finalized effective hours</i>	<i>31</i>
EXTERNAL TRADE	
<i>Exports and imports by countries</i>	<i>32</i>
<i>Exports and imports of goods</i>	<i>33</i>
DOMESTIC TRADE	
<i>Turnover in retail trade</i>	<i>40</i>
<i>Sale and buying out of products from agriculture, forestry and fishery</i>	<i>41</i>
CATERING	
<i>Turnover in catering</i>	<i>42</i>
TOURISM	
<i>Tourist arrivals and tourist overnight stays by country and type of resort</i>	<i>43</i>
<i>Tourist arrivals and tourist overnight stays by type of resort</i>	<i>44</i>
<i>Tourist arrivals and tourist overnight stays</i>	<i>44</i>
TRANSPORT, STORAGE AND COMMUNICATIONS	
<i>Railway transport</i>	<i>45</i>
<i>Road transport</i>	<i>46</i>
<i>Air transport</i>	<i>47</i>
<i>Marine transport</i>	<i>48</i>
<i>Postal, telegraph and telephone (PTT) communications</i>	<i>48</i>
MONETARY AGGREGATES AND BALANCE OF PAYMENTS	49
METHODOLOGICAL EXPLANATION	51

OPŠTI PREGLED INDEKSA / SUMMARY OF INDICES

Kvartalni indeksi / Quarterly indices

	2010 2009	Kvartali / Quarters							
		II 2010 I 2010	III 2010 II 2010	IV 2010 III 2010	II 2011 I 2011	II 2011 II 2010	III 2011 II 2011	III 2011 III 2010	
STANOVNIŠTVO ¹⁾²⁾									POPULATION ¹⁾²⁾
Živorodeni	85.8	96.0	122.3	97.1	94.2	99.1	Liveborn
Umrli	96.1	103.0	101.4	106.3	81.1	93.3	Deaths
Prirodni priraštaj	64.2	72.1	224.9	76.6	224.4	127.8	Natural increase
Zaključeni brakovi	96.0	134.0	124.9	85.9	136.5	97.7	Marriages
Razvedeni brakovi	113.2	141.8	84.2	138.5	100.8	92.8	Divorces
ZAPOSLENOST I ZARADE									EMPLOYMENT AND EARNINGS
Broj zaposlenih	104.8	89.1	99.4	91.0	103.4	103.1	Number of employees
Lica koja traže zaposlenje	96.2	114.2	103.8	108.7	94.2	95.9	94.3	94.5	Persons looking for employm.
Nominalne zarade bez poreza i doprinosa	111.3	105.8	101.2	106.5	94.6	100.0	100.2	98.3	Nominal wages without taxes and contributions
Realne zarade bez poreza i doprinosa	107.6	105.4	100.6	105.7	93.3	96.5	100.5	95.2	Real wages without taxes and contributions
CIJENE									PRICES
Indeks potrošačkih cijena	103.4	100.4	100.6	100.8	101.4	103.6	99.7	103.3	Consumer prices index
Hrana i bezalkoholna pića	103.3	101.1	101.0	102.3	102.1	105.3	97.1	102.0	Food and non alch. beverages
Odjeća i obuća	100.8	100.4	100.4	100.0	100.0	98.1	100.3	98.5	Clothes and footwear
Pokućstvo i oprema za kuću	97.3	98.4	100.3	100.6	99.7	99.1	100.3	99.3	Household furnishing
Cijene proizvođača ind.proizvoda	96.1	102.3	100.1	100.3	100.3	102.9	100.4	103.4	Produc. price ind. for ind.prod.
INDUSTRIJA									INDUSTRY
Indeksi fizičkog obima	117.5	98.2	86.0	132.7	77.8	79.0	114.0	104.6	Indices of physical scope
GRADEVINARSTVO									CONSTRUCTION
Vrijednost izvedenih građevinskih radova	113.1	165.5	110.7	151.2	190.0	135.6	Value of performed construction works
Izvršeni efektivni časovi na gradilištu	99.3	112.1	102.2	114.2	118.4	131.5	Performed effective hours at the construction site
SPOLJNA TRGOVINA									EXTERNAL TRADE
Izvoz	119.3	114.8	116.5	130.3	91.9	118.3	115.5	135.9	Export
Uvoz	100.2	107.2	91.3	96.1	139.0	110.4	106.2	110.5	Import
UNUTRAŠNJA TRGOVINA									DOMESTIC TRADE
Promet u trgovini na malo	91.0	103.1	80.8	99.9	119.5	110.8	131.5	125.1	Turnover in retail trade
UGOSTITELJSTVO	105.3	253.4	244.3	31.3	271.7	101.7	CATERING
TURIZAM									TOURISM
Posjete turista	101.6	106.8	6.4	95.7	498.5	109.5	345.0	92.1	Visits of tourists
Noćenja turista	96.9	107.5	3.8	92.3	761.5	108.2	420.8	93.3	Overnight stays of tourists
SAOBRAĆAJ, SKLADIŠTENJE I VEZE									TRANSPORT, STORAGE AND COMMUNICATIONS
Drumski-prevoz robe	130.8	80.1	145.2	120.6	102.2	53.8	119.6	74.5	Road - transport of goods
Prevoz putnika	82.6	87.5	54.5	84.7	128.8	73.9	141.3	95.6	Transport of passengers
Željeznički – prevoz robe	54.7	134.0	113.7	140.5	86.8	80.3	110.5	99.4	Railway - transport of goods
Prevoz putnika	79.4	94.8	45.9	82.7	130.9	89.2	139.4	68.9	Transport of passengers
Vazdušni – prevoz robe	99.2	277.2	73.6	70.4	51.6	30.6	95.1	29.2	Air – transport of goods
Prevoz putnika	86.2	122.5	36.7	162.0	218.1	110.6	194.4	107.8	Transport of passengers
Pomorski– Prevoz robe – t milje	86.3	93.3	19.0	48.8	174.9	99.1	203.5	73.7	Marine- transport of goods – t miles

¹⁾ Prethodni podaci²⁾ Zavod za statistiku ne raspolaže podacima o stanovništvu za VIII 2011. godine, isti će biti objavljeni u narednom broju¹⁾ Preliminary data²⁾ Statistical Office does not possess the data on population for VIII 2011, the data will be published in the next issue

OPŠTI PREGLED INDEKSA / SUMMARY OF INDICES

Mjesečni indeksi / Monthly indices

Ø 2010 = 100

	2010 2009	I – IX 2011 I - IX 2010	IX 2011 VIII 2011	2010				2011
				IX	X	XI	XII	I
STANOVNIŠTVO ¹⁴⁾								
Živorodeni	85.8	100.0 ²⁾	118.4 ³⁾	96.4	111.0	104.3	104.8	106.4
Umrli	96.1	103.6 ²⁾	102.7 ³⁾	93.3	106.9	104.2	107.4	124.8
Prirodni priraštaj	64.2	86.9 ²⁾	165.5 ³⁾	106.2	123.7	104.9	96.8	48.4
Zaključeni brakovi	96.0	96.9 ²⁾	105.2 ³⁾	134.0	128.8	99.8	87.8	73.5
Razvedeni brakovi	113.2	112.0 ²⁾	120.9 ³⁾	88.4	97.7	109.3	169.8	72.1
ZAPOSLENOST I ZARADE								
Broj zaposlenih	92.9	97.4	97.6	97.5	97.5	97.6
Lica koja traže zaposlenje	112.2	97.6	99.9	97.3	100.1	101.1	100.8	103.0
Nominalne zarade bez poreza i doprinosa	103.5	102.1	100.4	100.4	99.6	100.2	107.5	108.1
Realne zarade bez poreza i doprinosa	103.0	99.0	100.5	100.4	99.4	99.8	107.0	107.3
CIJENE								
Indeks potrošačkih cijena	100.5	103.1	99.9	100.0	100.2	100.4	100.5	100.7
Hrana i bezalkoholna pića	100.3	103.6	99.4	100.4	100.9	101.1	100.7	100.6
Odjeća i obuća	100.2	98.1	101.6	100.0	100.1	100.3	100.3	98.0
Pokućstvo i oprema za kuću	96.9	99.7	99.2	100.1	100.0	100.3	100.2	99.3
Cijene proizvođača industrijskih proizv.	99.1	103.5	100.1	100.5	100.5	100.5	100.7	102.3
ŠUMARSTVO								
Indeksi fizičkog obima	116.7	83.4	101.3	194	123.9	95	36.3	15.3
INDUSTRIJA								
Indeksi fizičkog obima	117.5	93.8	106.3	95.4	100.7	107.3	132.7	105.5
SPOLJNA TRGOVINA								
Izvoz	119.2	144.7	101.6	119.0	124.7	186.0	127.9	147.2
Uvoz	100.0	111.2	100.2	103.2	100.6	104.0	107.2	62.6
UNUTRAŠNJA TRGOVINA								
Promet robe na malo	101.5	119.8	87.2	115.3	100.5	93.6	100.1	84.0
Prodaja i otkup proizvoda poljoprivrede, šumarstva i ribarstva	83,4			127,0	109,5	115,2	81,6	117,2
UGOSTITELJSTVO								
Promet u ugostiteljstvu	93.0	99.14	92.8	205.6	44.4	53.8	101.1	28.8
TURIZAM								
Posjete turista	104.6	108.4	44.3	174.5	28.5	17	14.0	14.6
Noćenja turista	105.5	110.2	32.2	157.6	19.7	10.6	7.1	8.4
SAOBRAĆAJ, SKLADIŠT. I VEZE								
Drumski – prevoz robe	92.9	67.7	90.6	65.9	65.5	259.2	53.2	43.1
Prevoz putnika	79.3	92.1	76.5	80.3	69.5	52.4	59.4	72.2
Željeznički – prevoz robe	149.8	97.7	107.7	169.3	162.4	143.6	188.4	77.4
Prevoz putnika	91.4	69.1	75.0	83.0	66.5	46.0	72.6	60.8
Vazdušni - prevoz putnika	126.0	107.8	71.7.	184.7	99.5	72.9	90.0	52.8
Pomorski- prevoz robe – t milje	87.5	75.0	53.1	110.1	-	-	52.9	40.2

¹⁾ Prethodni podaci²⁾ Podaci za I-VII 2011/ I-VII 2010³⁾ Podaci za VII 2011/ VI 2011⁴⁾ Zavod za statistiku ne raspolaže podacima o stanovništvu za VIII 2011. godine, isti će biti objavljeni u narednom broju¹⁾ Previous data²⁾ Data for I-VII 2011/ I-VII 2010³⁾ Data for VII 2011/ VI 2011⁴⁾ Statistical Office does not possess the data on population for VIII 2011, the data will be published in the next issue

OPŠTI PREGLED INDEKSA/ SUMMARY OF INDICES

Mjesečni indeksi / Monthly indices

2011								
II	III	IV	V	VI	VII	VIII	IX	
								POPULATION ¹⁾²⁾
81.0	91.9	83.8	88.3	91.6	111.6	Liveborn
112.7	96.9	87.8	95.0	91.2	95.9	Deaths
-18.8	76.0	71.3	67.2	92.8	161.3	Natural increase
68.9	68.6	77.7	110.7	100.9	106.1	Marriages
109.3	116.3	100.0	100.0	100.0	120.9	Divorces
								EMPLOYMENT AND EARNINGS
97.7	98.2	98.7	100.7	104.0	105.5	103.8	...	Number of employees
103.8	102.8	101.1	97.0	93.6	91.4	91.3	92.3	Persons looking for employment
								Nominal wages without taxes and contributions
105.6	101.0	98.7	100.0	99.2	99.4	99.2	99.6	Real wages without taxes and contributions
103.9	97.3	95.1	96.5	96.2	96.7	95.8	96.3	
								PRICES
101.7	103.8	103.8	103.6	103.1	102.8	103.5	103.4	Consumer prices index
102.2	105.6	106.0	106.0	102.9	101.9	102.3	101.8	Food and non alch. beverages
97.9	98.0	97.7	97.9	98.3	98.3	97.5	99.1	Clothes and footwear
99.2	99.1	99.0	98.7	99.1	99.1	99.4	99.1	Household furnishing
103.1	103.5	103.5	103.3	103.0	103.7	103.6	103.8	Produc. price ind. for ind. prod.
								FORESTRY
39.8	69.2	79.7	110.8	138.3	137.5	163.3	165.5	Indices of physical scope
								INDUSTRY
99.9	97.2	82.5	70.5	82.4	87.1	88.0	93.5	Indices of physical scope
								EXTERNAL TRADE
124.5	165.1	140.6	131.6	129.5	133.6	163.8	166.4	Export
86.4	109.9	107.1	117.1	135.8	129.1	126.4	126.7	Import
								INTERNAL TRADE
87.7	110.3	102.2	116.5	127.9	150.8	163.0	142.2	Turnover of retail trade goods
								Sales and buy out of products in agriculture, forestry and fishing
115.2	105.0	98.6	92.3	141.9	212.0	263.5		
								CATERING
31.3	38.2	44.3	101.0	119.7	200.0	249.2	231.48	Turnover in catering
								TOURISM
15.0	17.6	30.8	74.1	130.7	332.3	432.5	191.8	Visits of tourists
8.4	10.6	17.7	56.0	135.2	339.0	535.7	172.3	Overnight stays of tourists
								TRANSPORT, STORAGE AND COMMUNIC.
57.9	52.8	49.6	58.6	66.3	72.8	71.3	64.6	Road - transport of goods
64.3	73.3	79.1	99.1	105.5	140.2	147.8	113.1	Transport of passengers
106.9	116.3	113.9	74.5	72.5	87.6	96.7	104.2	Railway - transport of goods
46.3	59.6	66.2	66.2	86.0	119.1	105.9	79.4	Transport of passengers
42.0	49.3	67.5	89.9	156.7	223.0	225.8	161.8	Air - transport of passengers
30.2	60.0	81.5	55.3	135.7	100.5	160.8	46.2	Marine- transport of goods - t miles

¹⁾ Prethodni podaci²⁾ Zavod za statistiku ne raspolaže podacima o stanovništvu za VIII 2011. godine, isti će biti objavljeni u narednom broju¹⁾ Preliminary data²⁾ Statistical Office does not possess the data on population for VIII 2011, the data will be published in the next issue

PRIRODNO KRETANJE STANOVNIŠTVA¹⁾

NATURAL POPULATION CHANGES

Crna Gora / Montenegro

	Živorodeni <i>Live births</i>			Umrli <i>Deaths</i>			Vitalni indeks <i>Vital index</i>	Prirodni priraštaj <i>Natural increase</i>	Brakovi / <i>Marriages</i>	
	<i>ukupno</i> <i>Total</i>	<i>muško</i> <i>Male</i>	<i>žensko</i> <i>Female</i>	<i>ukupno</i> <i>Total</i>	<i>muško</i> <i>Male</i>	<i>žensko</i> <i>Female</i>			sklopljeni <i>New marriages</i>	razvedeni <i>Divorces</i>
2006	7531	3969	3562	5968	3092	2876	1.26	1563	3462	470
2007	7834	4136	3698	5979	3048	2931	1.31	1855	4005	453
2008	8258	4313	3945	5708	2982	2726	1.45	2550	3445	460
2009	8642	4597	4045	5862	3008	2854	1.47	2780	3829	456
2010	7418	3809	3609	5633	2934	2699	1.32	1785	3675	516
Ø I – VII 2010	589	306	284	463	246	217	1.27	126	274	39
Ø I – VII 2011	573	297	276	485	254	230	1.18	88	266	44
2010										
jul	724	374	350	510	256	254	1.42	214	337	39
avgust	717	344	373	458	214	244	1.57	259	379	40
septembar	596	302	294	438	236	202	1.36	158	408	38
oktobar	686	352	334	502	264	238	1.37	184	396	42
novembar	645	333	312	489	239	250	1.32	156	304	47
decembar	648	337	311	504	260	244	1.29	144	268	73
2011 ²⁾										
januar	660	347	313	591	288	303	1.12	69	226	31
februar	508	270	238	532	276	256	0.95	-24	212	47
mart	588	297	291	472	247	225	1.25	116	211	50
april	526	274	252	420	229	191	1.25	106	238	43
maj	571	303	268	455	256	199	1.25	116	339	43
jun	583	289	294	438	230	208	1.33	145	309	43
jul	690	354	336	450	243	207	1.53	240	325	52
I – VII 2011/I – VII 2010	97.2	97.0	97.3	104.6	103.4	106.0		69.7	97.1	112.8

¹⁾ Zavod za statistiku ne raspolaže podacima o stanovništvu za VIII 2011. godine, isti će biti objavljeni u narednom broju

²⁾ Prethodni podaci

¹⁾ Statistical Office does not possess the data on population for VIII 2011, the data will be published in the next issue

²⁾ Preliminary data

PRIRODNO KRETANJE STANOVNIŠTVA PO OPŠTINAMA
NATURAL POPULATION CHANGE S BY MUNICIPALITY
I-VII 2011. god.^{1) 2)}

	Živorodeni / Live births			Umrli / Deaths			Vitalni indeks <i>Vital index</i>	Prirodni priraštaj <i>Natural increase</i>	Brakovi / Marriages	
	ukupno <i>Total</i>	muški <i>Male</i>	ženski <i>Female</i>	ukupno <i>Total</i>	muški <i>Male</i>	ženski <i>Female</i>			sklopljeni <i>New marriages</i>	razvedeni <i>Divorces</i>
CRNA GORA MONTENEGRO	4126	2134	1992	3358	1769	1589	1.23	768	1860	309
ANDRIJEVICA	28	8	20	47	18	29	0.60	-19	9	-
BAR	300	158	142	204	119	85	1.47	96	140	29
BERANE	232	119	113	212	99	113	1.09	20	124	12
BIJELO POLJE	323	164	159	266	129	137	1.21	57	146	10
BUDVA	120	59	61	79	44	35	1.52	41	43	1
CETINJE	94	48	46	104	46	58	0.90	-10	61	1
DANILOVGRAD	88	45	43	111	50	61	0.79	-23	37	9
HERCEG NOVI	190	114	76	182	110	72	1.04	8	102	15
KOLAŠIN	43	22	21	65	33	32	0.66	-22	18	4
KOTOR	147	82	65	143	70	73	1.03	4	78	11
MOJKOVAC	49	25	24	58	21	37	0.84	-9	21	-
NIKŠIĆ	461	245	216	437	230	207	1.05	24	211	24
PLAV	76	34	42	67	31	36	1.13	9	36	12
PLJEVLJA	121	64	57	250	132	118	0.48	-129	68	13
PLUŽINE	15	6	9	34	12	22	0.44	-19	5	1
PODGORICA	1398	734	664	786	452	334	1.78	612	565	116
ROŽAJE	217	104	113	71	48	23	3.06	146	94	32
ŠAVNIK	14	7	7	25	9	16	0.56	-11	5	-
TIVAT	94	49	45	89	48	41	1.06	5	33	3
ULCINJ	103	43	60	97	52	45	1.06	6	57	16
ŽABLJAK	13	4	9	31	16	15	0.42	-18	7	-

¹⁾ Prethodni podaci²⁾ Zavod za statistiku ne raspolaže podacima o stanovništvu za VIII 2011. godine, isti će biti objavljeni u narednom broju¹⁾ Preliminary data²⁾ Statistical Office does not possess the data on population for VIII 2011, the data will be published in the next issue

KRETANJE STANOVNIŠTVA UNUTAR CRNE GORE PO OPŠTINAMA
MIGRATIONS INSIDE MONTENEGRO BY MUNICIPALITY

I-IX 2011. god.¹⁾

OPŠTINE / MUNICIPALITIES	DOSELJENI / MOVED IN	ODSELJENI / MOVED OUT OF	SALDO / BALANCE
UKUPNO / TOTAL	3577	3577	0
ANDRIJEVICA	30	61	-31
BAR	431	236	195
BERANE	181	268	-87
BIJELO POLJE	164	386	-222
BUDVA	265	153	112
CETINJE	113	126	-13
DANILOVGRAD	175	109	66
HERCEG NOVI	165	134	31
KOLAŠIN	31	116	-85
KOTOR	110	127	-17
MOJKOVAC	53	99	-46
NIKŠIĆ	272	341	-69
PLAV	48	96	-48
PLJEVLJA	68	196	-128
PLUŽINE	7	70	-63
PODGORICA	1130	675	455
ROŽAJE	57	123	-66
SAVNIK	5	62	-57
TIVAT	142	88	54
ULCINJ	97	74	23
ŽABLJAK	33	37	-4

¹⁾ Prethodni podaci

¹⁾ Preliminary data

ZAPOSLENI PO SEKTORIMA DJELATNOSTI
EMPLOYEES BY ACTIVITY SECTORS

	Ukupno <i>Total</i>	PO SEKTORIMA / BY ACTIVITY SECTORS						
		poljoprivreda šumarstvo i vodoprivreda <i>Agriculture, forestry and water supply</i>	ribarstvo <i>Fishing</i>	vađenje ruda i kamena <i>Mining and quarrying</i>	prerađivačka industrija <i>Manufacturing</i>	proizvodnja elekt. energije <i>Electricity supply</i>	građevinarstvo <i>Construction</i>	trgovina na veliko i malo, opravka <i>Wholesale and retail trade, repair</i>
Ø 2006	150800	2607	115	4159	26065	5627	6853	29602
Ø 2007	156408	2586	112	3753	25697	5594	6647	30750
Ø 2008	166221	2651	129	3721	24335	6042	8831	31854
Ø 2009	174152	2700	119	3178	21824	5456	9997	36117
Ø 2010	161742	2347	102	2332	16563	4369	7903	36918
2010								
VIII	158535	2270	100	2248	15690	4100	7357	35980
IX	157570	2281	101	2288	15793	4047	7157	35838
X	157918	2235	105	2270	15794	4204	7257	36401
XI	157712	2006	101	2095	15738	4209	7324	36309
XII	157679	2042	100	2022	15691	4208	7322	36479
2011								
I	157849	2214	99	2010	15591	4385	7509	36476
II	158010	2283	97	2012	15562	4417	7570	36662
III	158842	2201	97	1999	15603	4443	7734	36732
IV	159669	2149	101	2012	15820	4465	7788	36663
V	162905	2243	100	2012	15942	4375	7853	37153
VI	168195	2643	104	2047	15735	4234	7909	38431
VII	170618	2605	99	2030	15831	4451	8072	38856
VIII	167955	2516	100	2048	15257	4506	8096	38246
I- VIII 2011/I- VIII 2010	99.5	96.2	97.1	83.7	92.3	98.6	95.1	100.4

/nastavak/

/ continued /

	PO SEKTORIMA / BY ACTIVITY SECTORS							
	hoteli i restorani <i>tels and restaurants</i>	saobraćaj, skladištenje i veze <i>Transport, storage and communi-cations</i>	finansijsko posredovnje <i>Financial activities</i>	aktivnosti u vezi s nekretninama <i>Real estate activities, renting</i>	državna uprava i obav. socijalno osiguranje <i>Public administration and social insurance</i>	obrazo- vanje <i>Education</i>	zdravstveno i socijalno osiguranje <i>Health and social work</i>	ostale komu- nalne, društ. i lične usluge <i>Other community, social & pers. service activities</i>
Ø 2006	10928	12133	3114	5905	10345	12846	12012	8489
Ø 2007	11307	11358	3143	5354	17575	12687	12004	7841
Ø 2008	14641	12798	3476	5631	18643	12892	12356	8221
Ø 2009	16678	13858	3748	7356	18860	12992	12238	9031
Ø 2010	13131	12541	3959	9264	18868	11854	11238	10353
2010								
VIII	13246	12330	3920	9450	18909	11410	10905	10620
IX	12546	12335	3925	9465	18895	11395	10912	10592
X	11758	12178	3976	9614	18927	11820	10881	10498
XI	11594	12144	4023	9714	19037	11914	10993	10511
XII	11258	12196	4036	9797	19051	11897	10897	10683
2011								
I	11152	12107	4026	9829	19013	12020	10912	10506
II	11157	11929	4051	9901	18883	12104	10868	10514
III	11301	12002	4072	9999	19015	12113	10851	10680
IV	11585	12110	4094	10206	18980	12155	10821	10720
V	13086	12303	4265	10551	19137	12140	10979	10766
VI	15974	12721	4321	10798	19311	11906	10882	11179
VII	16824	12536	4411	11091	19376	11919	11085	11432
VIII	15602	12568	4294	10962	19442	12037	11012	11269
I- VIII 2011/I-VIII 2010	96.6	96.7	106.3	114.8	101.8	101.2	95.9	106.2

¹⁾ Vidi metodološka objašnjenja na strani 47¹⁾ See methodological explanation on page 47

ZAPOSLENI PO OPŠTINAMA / EMPLOYEES BY MUNICIPALITY

	Opštine / Municipalities										
	Andrijevica	Bar	Berane	Bijelo Polje	Budva	Danilovgrad	Žabljak	Kolašin	Kotor	Mojkovac	Nikšić
Ø 2006	540	11105	5218	7316	9308	2541	805	1410	5547	1495	17616
Ø 2007	528	11125	5803	8060	8323	2496	937	1591	5983	1503	17481
Ø 2008	537	11876	6092	8628	8951	2969	986	1728	6378	1638	18312
Ø 2009	536	12283	6077	8643	10660	3158	999	1846	6723	1723	18682
Ø 2010	453	11072	5279	7250	10587	3012	731	1394	6308	1356	16687
2010											
VIII	416	10838	5050	6950	11939	2935	650	1238	6228	1290	15980
IX	436	10741	5015	6921	10222	2939	640	1228	6130	1288	16163
X	451	10651	5022	6791	9647	2961	640	1260	6116	1255	16356
XI	453	10610	4959	6871	9479	2959	632	1231	6088	1280	16229
XII	455	10633	4915	6880	9462	2937	649	1310	6065	1274	16205
2011											
I	453	10583	4885	6922	9432	3002	664	1317	6036	1280	16227
II	444	10532	4930	6840	9549	2979	672	1323	6046	1264	16235
III	448	10617	4905	6904	9734	3095	660	1384	6071	1271	16316
IV	447	10651	4907	6923	9973	3153	664	1380	6118	1306	16281
V	443	11061	4887	6981	11051	3183	670	1383	6195	1308	16431
VI	448	11694	4864	7007	12989	3196	679	1395	6382	1338	16007
VII	480	11848	4910	7008	13659	3156	706	1409	6612	1353	16121
VIII	452	11221	4889	6932	13159	3176	685	1411	6546	1356	15821
I- VIII 2011/I- VIII 2010	99.3	97.8	90.2	93.3	101.5	102.4	87.0	94.0	97.5	93.8	95.7

/nastavak/

/ continued /

	Opštine / Municipalities									
	Plav	Plužine	Pljevlja	Podgorica	Rožaje	Tivat	Ulcinj	Herceg Novi	Cetinje	Šavnik
Ø 2006	1470	913	7233	53103	3292	2940	3994	10130	4545	279
Ø 2007	1425	952	7100	56118	3148	3632	3873	11149	4890	291
Ø 2008	1411	938	7286	61032	3064	3755	4185	11763	4396	296
Ø 2009	1403	937	7284	64736	3187	4129	4400	12254	4197	295
Ø 2010	1180	637	6095	64706	2817	3357	4037	10838	3706	240
2010										
VIII	1103	568	5585	63810	2708	3166	3998	10330	3543	210
IX	1093	544	5618	64513	2727	3111	3912	10577	3552	200
X	1044	530	5682	65865	2697	3078	3890	10310	3502	170
XI	1049	531	5701	65956	2677	3065	3921	10308	3511	202
XII	1045	498	5657	66237	2635	3049	3861	10182	3522	208
2011										
I	1058	661	5657	66334	2609	3066	3854	10123	3481	205
II	1067	660	5640	66429	2622	3091	3847	10082	3545	213
III	1070	662	5605	66657	2617	3106	3904	10057	3544	215
IV	1084	687	5578	66852	2618	3171	3908	10188	3566	214
V	1093	692	5587	67694	2646	3290	4022	10445	3620	217
VI	1092	699	5589	68860	2641	3498	4571	11350	3676	220
VII	1114	686	5661	69199	2776	3693	4698	11606	3701	222
VIII	1109	664	5682	69013	2791	3454	4326	11398	3650	220
I- VIII 2011/I- VIII 2010	87.5	97.7	89.1	105.3	92.4	94.2	100.8	96.1	94.7	82.4

¹⁾ Vidi metodološka objašnjenja na strani 47¹⁾ See methodological explanation on page 47

NEZAPOSLENA LICA¹⁾ / UNEMPLOYED PERSONS¹⁾

	Stanje krajem perioda / Situation at the end of the period						U toku perioda / In the middle of the period		
	lica koja traže zaposlenje ²⁾ ukupno <i>Persons looking for job Total</i>	nezaposlena lica koja prvi put traže zaposlenje <i>Unemployed persons first time looking for job</i>	nezaposlena lica bez kvalifikacija <i>Unqualified unemployed persons</i>	lica koja primaju novčanu naknadu ³⁾ <i>Persons receiving unemployment benefits</i>	nezaposlene žene <i>unemployed women</i>		prijavilo se za zapošljavanje ⁴⁾ <i>Reported for employment</i>	zaposleni prema evidenciji Zavoda za zapošljavanje Crne Gore <i>Employees according to the records of Employment Agency of Montenegro</i>	prestanak vođenja evidencije ⁵⁾ <i>Records stopped to be kept</i>
					Svega <i>Total</i>	bez kvalifikacija <i>Unqualified</i>			
Ø 2006	43190	14855	11550	7833	19949	4720	2630	1955	3581
Ø 2007	34396	10069	8838	8654	15513	3414	2187	2658	2911
Ø 2008	29514	7375	7823	9507	13193	2925	2090	2261	2386
Ø 2009	28387	6382	7392	12451	12756	2757	2102	1228	2038
Ø 2010	31864	6866	7770	13258	14270	2828	2146	1152	2072
Ø I - IX 2010	31796	6792	7805	13280	14210	2841	2094	1054	2126
Ø I - IX 2011	31021	6981	7334	...	14055	2673	1999	1356	2251
2010									
IX	31016	6914	7319	12883	14043	2670	2447	1216	2167
X	31900	7055	7606	12897	14438	2781	2701	1664	1863
XI	32199	7174	7730	13408	14531	2824	2213	1553	1931
XII	32106	7036	7668	13627	14383	2761	1990	1122	1945
2011									
I	32829	7071	7839	13507	14776	2850	2346	944	1626
II	33062	7180	7888	13394	14902	2864	2178	1198	1848
III	32748	7256	7814	13578	14765	2829	2162	1009	2397
IV	32203	7263	7623	13291	14489	2772	1848	1180	2318
V	30920	6908	7365	13078	13875	2657	1579	1473	2715
VI	29816	6758	7137	12684	13394	2580	1788	1997	2849
VII	29128	6686	6878	12384	13268	2495	1587	1684	2225
VIII	29078	6752	6751	12151	13402	2497	1842	1332	2010
IX	29405	6951	6708	...	13625	2509	2662	1388	2269
I- IX 2011/I- IX 2010	97.6	102.8	94.0	...	98.9	94.1	95.5	128.6	105.9

¹⁾ SOURCE: Employment Agency of Montenegro¹⁾ IZVOR: Zavod za zapošljavanje Crne Gore²⁾ Shodno članu 4 Zakona o zapošljavanju („Sl.list RCG”, br. 5/02)³⁾ Shodno članu 48 Zakona o zapošljavanju⁴⁾ Nezaposlene osobe koje su se tokom izvještajnog mjeseca prijavile na evidenciju Zavoda za zapošljavanje⁵⁾ Shodno članu 86 Zakona o zapošljavanju²⁾ According to the article 4 of the Law on Employment („Official Gazzete of RoM”, No. 5/02 and 79/04)³⁾ According to the Article 48 of the Law on Employment⁴⁾ Unemployed persons who in the reference month reported to the records of the Employment Agency of Montenegro⁵⁾ According to the Article 86 of the Law on Employment

PROSJEČNE ZARADE(BRUTO) PO SEKTORIMA DJELATNOSTI
AVERAGE GROSS WAGES BY ACTIVITY SECTORS

u EUR	in EUR							
	Ukupno Total	PO SEKTORIMA / BY ACTIVITY SECTORS						
		poljoprivreda, šumarstvo i vodoprivreda <i>Agriculture, forestry and water supply</i>	ribarstvo <i>Fishing</i>	vađenje ruda i kamena <i>Mining and quarrying</i>	prerađivačka industrija <i>Manufacturing</i>	proizvodnja električne energije <i>Electricity supply</i>	građevinarstvo <i>Construction</i>	trgovina na veliko i malo, opravka <i>Wholesale and retail trade, repair</i>
Ø 2008	609	584	197	833	615	783	519	345
Ø 2009	643	682	213	776	613	829	554	375
Ø 2010	715	841	267	961	699	1023	634	444
Ø I - IX 2010	709	842	263	961	674	1023	608	437
Ø I - IX 2011	723	877	321	929	724	1092	599	473
2010								
IX	717	851	205	1033	724	1018	618	451
X	711	875	272	981	769	989	657	440
XI	716	807	155	967	766	984	602	413
XII	768	839	387	936	783	1077	821	536
2011								
I	772	1050	321	994	805	1341	629	485
II	754	974	438	859	749	1190	560	505
III	722	856	186	942	679	1028	554	484
IV	705	850	390	959	733	1080	591	453
V	714	848	316	974	705	1030	577	481
VI	708	785	268	880	733	1002	588	476
VII	710	879	257	912	710	1024	711	459
VIII	709	860	346	900	726	996	577	461
IX	712	851	225	942	715	1049	603	468
I- IX 2011/I- IX 2010	102.0	104.2	122.1	96.7	107.4	106.4	98.5	108.2

/nastavak/

/ continued /

	PO SEKTORIMA / BY ACTIVITY SECTORS							
	hoteli i restorani <i>Hotels and restaurants</i>	saobraćaj, skladištenje i veze <i>Transport, storage and communications</i>	finansijsko posredovanje <i>Financial activities</i>	aktivnosti u vezi s nekretnostima <i>Real estate activities, renting</i>	državna uprava i obav. socijalno osiguranje <i>Public administration and social insurance</i>	obrazovanje <i>Education</i>	zdravstveno i socijalno osiguranje <i>Health and social work</i>	ostale komunalne, društvene i lične usluge <i>Other community, social & personal service activities</i>
Ø 2008	445	757	1268	531	669	570	576	532
Ø 2009	455	848	1248	571	673	595	655	562
Ø 2010	538	935	1324	660	690	644	690	622
Ø I - IX 2010	540	925	1310	640	689	642	692	602
Ø I - IX 2011	589	937	1261	651	739	662	705	614
2010								
IX	555	993	1337	654	676	648	687	612
X	525	898	1238	648	677	649	678	665
XI	498	989	1427	636	678	652	677	672
XII	580	1006	1423	858	729	651	688	694
2011								
I	576	956	1244	658	754	662	740	560
II	547	927	1333	680	751	668	705	639
III	568	930	1311	662	733	665	694	587
IV	551	932	1223	660	713	659	694	590
V	580	920	1235	636	723	664	707	629
VI	596	944	1217	648	728	656	718	632
VII	588	941	1241	651	741	660	698	638
VIII	614	947	1282	632	747	654	694	623
IX	617	935	1226	642	755	661	692	617
I- IX 2011/I- IX 2010	109.1	101.3	96.3	101.7	107.3	103.1	101.9	102.0

PROSJEČNE ZARADE BEZ POREZA I DOPRINOSA (NETO) PO SEKTORIMA DJELATNOSTI
AVERAGE WAGES WITHOUT TAXES AND CONTRIBUTIONS (NET) BY ACTIVITY SECTOR

u EUR

in EUR

	Ukupno <i>Total</i>	PO SEKTORIMA / BY ACTIVITY SECTORS						
		poljoprivreda, šumarstvo i vodoprivreda <i>Agriculture, forestry and water supply</i>	ribarstvo <i>Fishing</i>	vađenje ruda i kamenja <i>Mining and quarrying</i>	prerađivačka industrija <i>Manufacturing</i>	proizvodnja elekt. energije <i>Electricity supply</i>	građevni- narstvo <i>Construction</i>	trgovina na veliko i malo, opravka <i>Wholesale and retail trade, repair</i>
Ø 2008	416	398	141	574	418	530	353	242
Ø 2009	463	485	159	558	441	593	400	273
Ø 2010	479	564	179	644	469	686	425	298
Ø I - IX 2010	475	464	176	644	452	688	408	293
Ø I - IX 2011	485	588	215	622	486	733	401	317
2010								
IX	481	570	137	692	486	682	414	302
X	477	587	182	658	515	663	440	295
XI	480	541	104	649	514	660	404	277
XII	515	562	259	627	525	722	551	359
2011								
I	518	704	215	666	539	899	421	325
II	506	653	293	575	503	798	375	338
III	484	574	125	631	455	689	371	324
IV	473	569	262	643	492	725	396	303
V	479	568	212	653	473	690	387	322
VI	475	526	180	590	491	673	394	319
VII	476	589	172	611	476	687	476	308
VIII	475	576	232	603	487	668	387	309
IX	477	571	152	631	479	703	404	314
I- IX 2011/I- IX 2010	102.1	104.3	122.2	96.6	107.5	106.5	98.3	108.2

/nastavak/

/ continued /

	PO SEKTORIMA / BY ACTIVITY SECTORS							
	hoteli i restorani <i>Hotels and restaurants</i>	saobraćaj, skladištenje i veze <i>Transport, storage and communica- tions</i>	financijsko posredovanje <i>Financial activities</i>	aktivnosti u vezi s nekretninama <i>Real estate activities, renting</i>	državna uprava i obav. socijalno osiguranje <i>Public administration and social insurance</i>	obrazovanje <i>Education</i>	zdravstveno i socijalno osiguranje <i>Health and social work</i>	ostale komunalne, društvene i lične usluge <i>Other community, social & personal service activities</i>
Ø 2008	307	513	854	363	454	388	395	370
Ø 2009	330	607	891	412	483	428	473	405
Ø 2010	361	627	889	443	463	432	462	417
Ø I - IX 2010	363	620	880	429	461	430	464	404
Ø I - IX 2011	395	628	845	437	496	444	473	412
2010								
IX	373	666	899	438	453	435	461	410
X	352	602	831	435	454	435	455	446
XI	334	663	956	427	455	437	455	450
XII	389	675	955	575	489	436	462	465
2011								
I	386	640	834	441	505	444	496	375
II	367	622	894	456	504	448	473	428
III	381	624	878	444	492	446	466	394
IV	369	626	820	443	478	443	466	395
V	389	617	828	426	485	446	474	421
VI	400	633	815	434	488	440	482	424
VII	394	631	831	437	497	442	469	428
VIII	412	635	860	424	500	438	466	417
IX	415	428	821	430	506	443	464	413
I- IX 2011/I- IX 2010	108.8	101.3	96.0	101.9	107.6	103.3	101.9	102.0

INDEKSI PROSJEČNIH ZARADA (BRUTO) PO SEKTORIMA DJELATNOSTI
INDICES OF AVERAGE GROSS WAGES BY ACTIVITY SECTOR
Ø 2010=100

	Ukupno <i>Total</i>	PO SEKTORIMA / BY ACTIVITY SECTORS						
		poljoprivreda, šumarstvo i vodoprivreda <i>Agriculture, forestry and water supply</i>	ribarstvo <i>Fishing</i>	vađenje ruda i kamenja <i>Mining and quarrying</i>	prerađivačka industrija <i>Manufacturing</i>	proizvodnja električne energije <i>Electricity supply</i>	građevni- narstvo <i>Construction</i>	trgovina na veliko i malo, opravka <i>Wholesale and retail trade, repair</i>
Ø 2008	85.2	69.4	73.8	86.7	88.0	76.5	81.9	77.7
Ø 2009	89.9	81.1	79.8	80.7	87.7	81.0	87.4	84.5
Ø 2010	100.0	100.0	100.0	100.0	100.0	100.0	100.0	100.0
Ø I - IX 2010	99.2	100.1	98.5	100.0	96.4	100.3	95.9	98.4
Ø I - IX 2011	101.1	104.3	120.2	96.7	103.6	106.7	94.5	106.5
2010								
IX	111.5	124.8	96.2	133.1	118.1	122.8	111.6	120.3
X	110.6	128.3	127.7	126.4	125.4	119.3	118.6	117.3
XI	111.4	118.3	72.8	124.6	125.0	118.7	108.7	110.1
XII	119.4	123.0	181.7	120.6	127.7	129.9	148.2	142.9
2011								
I	108.0	124.9	120.2	103.4	115.2	131.1	99.2	109.2
II	105.5	115.8	164.0	89.4	107.2	116.3	88.3	113.7
III	101.0	101.8	69.7	98.0	97.1	100.5	87.4	109.0
IV	98.6	101.1	146.1	99.8	104.9	105.6	93.2	102.0
V	99.9	100.8	118.4	101.4	100.9	100.7	91.0	108.3
VI	99.0	93.3	100.4	91.6	93.6	97.9	92.7	107.2
VII	99.3	104.5	96.3	94.9	101.6	100.1	112.1	103.4
VIII	99.2	102.3	129.6	93.7	103.9	97.4	91.0	103.8
IX	99.6	101.2	84.3	98.0	102.3	102.5	95.1	105.4
I- IX 2011/I- IX 2010	102.0	104.2	122.1	96.7	107.4	106.4	98.5	108.2

/nastavak/

/ continued /

	PO SEKTORIMA / BY ACTIVITY SECTORS							
	hoteli i restorani <i>Hotels and restaurants</i>	saobraćaj, skladištenje i veze <i>Transport, storage and communications</i>	finansijsko posredovanje <i>Financial activities</i>	aktivnosti u vezi s nekretnostima <i>Real estate activities, renting</i>	državna uprava i obav. socijalno osiguranje <i>Public administration and social insurance</i>	obrazo- vanje <i>Education</i>	zdravstveno i socijalno osiguranje <i>Health and social work</i>	ostale komunalne, društvene i lične usluge <i>Other community, social & personal service activities</i>
Ø 2008	82.7	81.0	95.8	80.5	97.0	88.5	83.5	85.5
Ø 2009	84.6	90.7	94.3	86.5	97.5	92.4	94.9	90.4
Ø 2010	100.0	100.0	100.0	100.0	100.0	100.0	100.0	100.0
Ø I - IX 2010	100.4	98.9	98.9	97.0	99.9	99.7	100.3	96.8
Ø I - IX 2011	109.5	100.2	95.2	98.6	107.1	102.8	102.2	98.7
2010								
IX	122.0	117.1	107.1	114.5	100.4	108.9	104.9	108.9
X	115.4	105.9	99.2	113.5	100.6	109.1	103.5	118.3
XI	109.5	116.6	114.3	111.4	100.7	109.6	103.4	119.6
XII	127.5	118.6	114.0	150.3	108.3	109.4	105.0	123.5
2011								
I	107.1	102.2	94.0	99.7	109.3	102.8	107.2	90.0
II	101.7	99.1	100.7	103.0	108.8	103.7	102.2	102.7
III	105.6	99.5	99.0	100.3	106.2	103.3	100.6	94.4
IV	102.4	99.7	92.4	100.0	103.3	102.3	100.6	94.9
V	107.8	98.4	93.3	96.4	104.8	103.1	102.5	101.1
VI	110.8	101.0	91.9	98.9	105.5	101.9	104.1	101.6
VII	109.3	100.6	93.7	98.6	107.4	102.5	101.2	102.6
VIII	114.1	101.3	96.8	95.8	108.3	101.6	100.6	100.2
IX	107.1	97.8	98.6	97.6	100.1	99.8	93.5	110.2
I- IX 2011/I- IX 2010	109.1	101.3	96.3	101.7	107.3	103.1	101.9	102.0

INDEKSI PROSJEČNIH ZARADA BEZ POREZA I DOPRINOSA (NETO) PO SEKTORIMA DJELATNOSTI
INDICES OF AVERAGE WAGES WITHOUT TAXES AND CONTRIBUTIONS (NET) BY ACTIVITY SECTOR

Ø 2010=100

	Ukupno <i>Total</i>	PO SEKTORIMA / BY ACTIVITY SECTORS						
		poljoprivreda, šumarstvo i vodoprivreda <i>Agriculture, forestry and water supply</i>	ribarstvo <i>Fishing</i>	vađenje ruda i kamenja <i>Mining and quarrying</i>	prerađivačka industrija <i>Manufacturing</i>	proizvodnja električne energije <i>Electricity supply</i>	građevni- narstvo <i>Construction</i>	trgovina na veliko i malo opravka <i>Wholesale and retail trade, repair</i>
Ø 2008	86.8	70.6	78.8	89.1	89.1	77.3	83.1	81.2
Ø 2009	96.7	86.0	88.8	86.6	94.0	86.4	94.1	91.6
Ø 2010	100.0	100.0	100.0	100.0	100.0	100.0	100.0	100.0
Ø I - IX 2010	99.2	100.0	98.3	100.0	96.4	100.3	96.0	98.3
Ø I - IX 2011	101.3	104.3	120.1	96.6	103.6	106.9	94.4	106.4
2010								
IX	103.9	117.5	86.2	124.0	110.2	115.0	103.5	110.6
X	103.0	121.0	114.5	117.9	116.8	111.8	110.0	108.1
XI	103.7	111.5	65.4	116.3	116.6	111.3	101.0	101.5
XII	111.2	115.9	162.9	112.4	119.0	121.8	137.8	131.5
2011								
I	108.1	124.8	120.1	103.4	114.9	131.0	99.1	109.1
II	105.6	115.8	163.7	89.3	107.2	116.3	88.2	113.4
III	101.0	101.8	69.8	98.0	97.0	100.4	87.3	108.7
IV	98.7	100.9	146.4	99.8	104.9	105.7	93.2	101.7
V	100.0	100.7	118.4	101.4	100.9	100.6	91.1	108.1
VI	99.2	93.3	100.6	91.6	104.7	98.1	92.7	107.0
VII	99.4	104.4	96.1	94.9	101.5	100.1	112.0	103.4
VIII	99.2	102.1	129.6	93.6	103.8	97.4	91.1	103.7
IX	99.6	101.2	84.9	98.0	102.1	102.5	95.1	105.4
I- IX 2011/I- IX 2010	102.1	104.3	122.2	96.6	107.5	106.5	98.3	108.2

/nastavak/

/ continued /

	PO SEKTORIMA / BY ACTIVITY SECTORS							
	hoteli i restorani <i>Hotels and restaurants</i>	saobraćaj, skladištenje i veze <i>Transport, storage and communications</i>	financijsko posred. <i>Financial activities</i>	aktivnosti u vezi s nekretninama <i>Real estate activities, renting</i>	državna uprava i obav. socijalno osiguranje <i>Public administration and social insurance</i>	obrazovanje <i>Education</i>	zdravstveno i socijalno osiguranje <i>Health and social work</i>	ostale komunalne, društvene i lične usluge <i>Other community, social & personal service activities</i>
Ø 2008	85.0	81.8	96.1	81.9	98.1	89.8	85.5	88.7
Ø 2009	91.4	96.8	100.2	93.0	104.3	99.1	102.4	97.1
Ø 2010	100.0	100.0	100.0	100.0	100.0	100.0	100.0	100.0
Ø I - IX 2010	100.6	98.9	99.0	96.8	99.6	99.5	100.4	96.9
Ø I - IX 2011	109.4	100.2	95.1	98.6	107.1	102.8	102.4	98.8
2010								
IX	113.0	109.7	100.9	106.3	93.8	101.6	97.5	101.2
X	106.7	99.2	93.3	105.6	94.0	101.6	96.2	110.1
XI	101.2	109.22	107.3	103.6	94.2	102.1	96.2	111.1
XII	117.9	111.2	107.2	139.6	101.2	101.9	97.7	114.8
2011								
I	106.9	102.1	93.8	99.5	109.1	102.8	107.4	89.9
II	101.7	99.2	100.6	102.9	108.9	103.7	102.4	102.6
III	105.5	99.5	98.8	100.2	106.3	103.2	100.9	94.5
IV	102.2	99.8	92.2	100.0	103.2	102.5	100.9	94.7
V	107.8	98.4	93.1	96.2	104.8	103.2	102.6	101.0
VI	110.8	101.0	91.7	98.0	112.7	101.9	104.3	101.7
VII	109.1	100.6	93.5	98.6	107.3	102.3	101.5	102.6
VIII	114.1	101.3	96.7	95.7	108.0	101.4	100.9	100.0
IX	115.0	100.2	92.4	97.1	109.3	102.5	100.4	99.0
I- IX 2011/I- IX 2010	108.8	101.3	96.0	101.9	107.6	103.3	101.9	102.0

PROSJEČNE ZARADE (BRUTO) PO OPŠTINAMA / AVERAGE GROSS WAGES BY MUNICIPALITY

u EUR	Opštine / Municipalities											in EUR
	Andrijevica	Bar	Berane	Bijelo Polje	Budva	Danilov-grad	Žabljak	Kolašin	Kotor	Mojkovac	Nikšić	
Ø 2008	492	545	531	517	642	514	539	552	612	530	642	
Ø 2009	531	563	561	531	626	533	583	605	671	571	621	
Ø 2010	626	622	596	584	726	570	645	644	695	629	711	
Ø I - IX 2010	624	620	597	580	718	569	640	643	694	625	697	
Ø I - IX 2011	610	651	579	584	735	577	654	646	705	625	691	
2010												
IX	662	651	582	575	754	559	657	632	674	694	703	
X	621	620	583	589	739	527	649	619	690	634	707	
XI	617	612	575	581	713	576	636	623	696	673	719	
XII	663	656	618	617	791	617	698	697	708	623	825	
2011												
I	671	692	677	665	723	645	750	754	735	666	819	
II	628	684	613	630	885	622	710	718	740	694	754	
III	655	619	610	594	703	570	680	653	704	646	681	
IV	576	612	544	579	685	555	633	637	711	615	669	
V	589	641	536	578	717	584	613	667	693	591	671	
VI	592	655	559	528	709	588	622	622	697	599	574	
VII	588	668	547	575	716	535	614	579	685	589	669	
VIII	591	640	545	561	744	557	642	584	675	594	682	
IX	586	647	552	543	740	543	639	583	719	607	654	
I- IX 2011/I- IX 2010	97.8	105	97.0	100.7	102.4	101.4	102.2	100.5	101.6	100.0	99.1	

/nastavak/

/continued/

	Opštine / Municipalities									
	Plav	Plužine	Pljevlja	Podgorica	Rožaje	Tivat	Ulcinj	Herceg Novi	Cetinje	Šavnik
Ø 2008	493	549	614	676	561	575	460	499	442	526
Ø 2009	537	654	667	727	606	639	488	504	573	546
Ø 2010	592	792	799	790	656	771	553	570	619	616
Ø I - IX 2010	593	770	761	788	654	753	549	564	611	615
Ø I - IX 2011	598	790	801	794	659	762	560	620	656	590
2010										
IX	602	820	776	783	652	791	550	635	598	626
X	587	857	939	765	650	826	576	598	597	604
XI	586	839	961	782	664	770	546	545	621	608
XII	602	918	811	840	673	895	569	623	711	641
2011										
I	649	1109	843	826	705	900	552	640	678	683
II	627	920	851	799	681	776	666	653	656	650
III	615	718	745	800	674	773	580	620	661	626
IV	592	697	806	780	634	756	522	594	645	587
V	588	793	827	782	627	788	513	643	683	585
VI	574	803	759	786	636	733	543	630	614	546
VII	577	854	773	794	654	743	577	603	588	560
VIII	572	617	795	796	648	704	543	589	622	531
IX	569	781	819	784	656	739	555	625	762	557
I- IX 2011/I- IX 2010	100.8	102.6	105.3	100.8	100.8	101.2	102.0	109.9	107.4	95.9

PROSJEČNE ZARADE BEZ POREZA I DOPRINOSA (NETO) PO OPŠTINAMA
AVERAGE WAGES WITHOUT TAXES AND CONTRIBUTIONS (NET) BY ACTIVITY SECTOR

u EUR	Opštine / Municipalities											in EUR
	Andrijevica	Bar	Berane	Bijelo Polje	Budva	Danilovgrad	Žabljak	Kolašin	Kotor	Mojkovac	Nikšić	
Ø 2008	336	371	361	353	439	352	368	376	419	361	439	
Ø 2009	382	405	404	383	451	384	420	435	484	411	448	
Ø 2010	420	417	400	392	487	382	432	432	466	422	476	
Ø I - IX 2010	418	416	401	389	483	382	429	431	465	419	467	
Ø I - IX 2011	409	436	388	392	493	387	439	433	473	419	463	
2010												
IX	444	436	390	386	506	374	440	423	452	465	471	
X	416	416	391	395	496	354	435	415	462	426	474	
XI	414	410	385	389	478	386	426	418	466	451	482	
XII	444	440	414	414	530	414	468	467	474	418	553	
2011												
I	450	464	454	445	485	433	503	505	492	446	549	
II	421	458	411	422	593	418	476	481	496	465	505	
III	439	415	410	398	471	383	456	438	472	434	456	
IV	386	410	365	388	459	372	424	427	477	413	449	
V	394	429	359	387	481	392	412	447	464	396	451	
VI	397	440	374	354	475	394	418	418	467	401	433	
VII	394	448	366	385	480	360	411	388	459	395	448	
VIII	396	429	366	376	499	373	430	391	453	398	457	
IX	393	434	370	364	498	364	429	391	482	407	438	
I- IX 2011/I- IX 2010	97.8	104.8	96.8	100.8	102.1	101.3	102.3	100.5	101.7	100.0	99.1	

/nastavak/

/ continued /

	Opštine / Municipalities									
	Plav	Plužine	Pljevlja	Podgorica	Rožaje	Tivat	Ulcinj	Herceg Novi	Cetinje	Šavnik
Ø 2008	332	377	420	460	382	392	315	344	300	358
Ø 2009	386	469	479	522	436	460	353	364	413	393
Ø 2010	397	531	536	530	440	517	371	382	415	413
Ø I - IX 2010	384	463	483	523	434	454	351	370	415	389
Ø I - IX 2011	401	530	537	533	442	512	376	416	440	395
2010										
IX	404	550	521	525	437	530	368	426	401	420
X	393	576	629	513	435	555	386	401	400	405
XI	393	562	644	524	445	516	366	364	416	407
XII	403	615	544	563	451	600	381	417	477	429
2011										
I	435	743	565	554	473	603	370	430	454	457
II	421	616	570	536	457	520	446	438	440	436
III	412	481	500	536	452	518	389	416	443	419
IV	397	467	541	523	425	507	350	398	433	393
V	394	531	554	524	421	529	344	432	458	392
VI	385	538	510	527	426	493	364	423	412	366
VII	387	572	519	533	439	500	387	404	394	375
VIII	383	414	534	534	435	473	365	395	418	356
IX	382	524	549	525	440	499	372	420	511	373
I- IX 2011/I- IX 2010	104.4	114.5	111.2	101.9	101.8	112.8	107.1	112.4	106.0	101.5

INDEKSI CIJENA PROIZVOĐAČA INDUSTRIJSKIH PROIZVODA
PRODUCERS PRICE INDICES FOR INDUSTRIAL PRODUCTS

	2009 2008	2010 2009	I-IX 2011 I-IX 2010	Ø 2010 = 100					
				2010				2011	
				IX	X	XI	XII	I	II
Ukupno	96.1	99.1	103.5	100.5	100.5	100.5	100.6	102.3	103.1
Vađenje ruda i kamena	102.7	88.8	93.7	94.2	94.2	94.0	94.0	96.5	97.2
Prerađivačka industrija	90.9	104.3	106.5	101.4	101.4	101.3	101.6	103.8	104.9
Proizvodnja el. energije, gasa i vode	108.5	87.8	98.3	100.0	100.0	100.0	100.0	100.0	100.0
Vađenje ruda i kamena	102.7	88.8	93.7	94.2	94.2	94.0	94.0	96.5	97.2
Vađenje energetskih sirovina	101.0	97.9	99.5	99.6	99.6	99.6	99.6	99.6	99.6
Vađenje kamenog uglja, lignita i treseta	101.0	97.9	99.5	99.6	99.6	99.6	99.6	99.6	99.6
Vađenje ostalih sirovina i materijala	104.0	81.8	89.4	90.0	90.0	89.6	89.6	94.1	95.4
Vađenje ruda metala	105.3	79.0	86.7	87.8	87.8	87.8	87.8	93.3	93.3
Vađenje ostalih ruda i kamena	98.1	93.8	101.1	99.4	99.4	97.5	97.5	97.5	104.5
Prerađivačka industrija	90.9	104.3	106.5	101.4	101.4	101.3	101.6	103.8	104.9
Prehrambeni proizvodi, pića i duvan	103.4	99.4	107.0	99.3	99.4	103.7	106.0	102.0	99.7
Proizv. prehrambenih proizvoda i pića	101.9	99.3	111.9	99.3	99.3	104.2	106.8	107.8	105.2
Proizvodnja duvanskih proizvoda	114.2	100.0	70.5	100.0	100.0	100.0	100.0	58.3	58.3
Proizvodnja tekstila i tekstilnih proizvoda	95.0	112.0	110.9	104.8	104.8	104.8	103.9	103.9	110.0
Proizvodnja odjevnih predmeta i krzna	95.0	112.0	110.9	104.8	104.8	104.8	103.9	103.9	110.0
Proizvodnja kože i predmeta od kože	104.7	100.0	100.0	100.0	100.0	100.0	100.0	100.0	100.0
Proizvodnja predmeta od kože i obuće	104.7	100.0	100.0	100.0	100.0	100.0	100.0	100.0	100.0
Prerada drveta i proizvoda od drveta	104.1	88.3	93.2	95.2	95.2	95.6	95.1	94.3	94.4
Proizvodi od drveta, plute i slično	104.1	88.3	93.2	95.2	95.2	95.6	95.1	94.3	94.4
Proizvodnja papira, izdavanje i štampanje	99.7	98.8	100.2	99.6	99.6	99.6	99.6	100.4	100.4
Proizv. celuloze, papira i proizv. od papira	101.1	99.2	102.9	99.9	99.9	99.9	99.9	102.9	102.9
Izdavanje, štampanje i reprodukcija	99.2	98.7	99.4	99.5	99.5	99.5	99.5	99.5	99.5
Prerada hemijskih proizvoda i vlakana	113.0	97.4	103.0	100.1	100.1	100.1	100.1	103.0	103.0
Proizvodnja hemikalija i hem. proizvoda	113.0	97.4	103.0	100.1	100.1	100.1	100.1	103.0	103.0
Proizvodnja proizv. od gume i plastike	104.9	100.7	100.0	100.0	100.0	100.0	100.0	100.0	100.0
Proizvodnja proizv. od gume i plastike	104.9	100.7	100.0	100.0	100.0	100.0	100.0	100.0	100.0
Proizv. proizvoda od ost. nemetalnih min.	99.0	96.3	88.0	90.6	89.4	85.1	89.0	92.1	90.6
Proizv. proizvoda od ost. nemet. minerala	99.0	96.3	88.0	90.6	89.4	85.1	89.0	92.1	90.6
Proizv. osn. metala i metalnih proizvoda	76.2	113.1	111.7	104.4	104.4	102.2	101.8	108.0	111.4
Proizvodnja osnovnih metala	73.9	114.8	113.1	105.0	105.0	102.5	102.5	109.0	112.6
Proizvodnja metal. proizv., osim mašina	110.1	89.9	93.1	96.8	96.8	96.8	91.0	94.4	94.6
Proizvodnja mašina i uređaja, ostala	99.3	83.0	97.1	97.8	97.8	97.8	97.8	97.8	97.8
Proizvodnja mašina i uređaja, ostala	99.3	83.0	97.1	97.8	97.8	97.8	97.8	97.8	97.8
Prerađivačka industrija, ostala	112.3	91.9	96.4	97.3	97.3	97.3	97.3	97.3	97.3
Proizv. namještaja i raznovrsnih proizvoda	112.3	91.9	96.4	97.3	97.3	97.3	97.3	97.3	97.3
Proizvodnja el. energije, gasa i vode	108.5	87.8	98.3	100.0	100.0	100.0	100.0	100.0	100.0
Proizv. električne energije, gasa i vode	108.5	87.8	98.3	100.0	100.0	100.0	100.0	100.0	100.0
Proizv. el. energije, gasa i vode	108.5	87.8	98.3	100.0	100.0	100.0	100.0	100.0	100.0
Izabrane grupe proizvoda									
Elementi i materijal za ugrađivanje u građevinarstvu	107.8	95.2	96.9	97.6	97.6	97.6	96.0	97.7	97.7

INDEKSI CIJENA PROIZVOĐAČA INDUSTRIJSKIH PROIZVODA
PRODUCERS PRICE INDICES FOR INDUSTRIAL PRODUCTS

Ø 2010 = 100							
2011							
III	IV	V	VI	VII	VIII	IX	
103.5	103.5	103.3	103.0	103.7	103.6	103.8	Total
97.2	96.5	94.0	94.0	94.0	94.5	96.0	Mining and quarrying
105.5	106.4	106.4	106.0	107.0	106.8	106.9	Manufacturing
100.0	97.4	97.4	97.4	97.4	97.4	97.4	Electricity, gas and water supply
97.2	96.5	94.0	94.0	94.0	94.5	96.0	Mining and quarrying
99.6	99.6	99.6	99.6	99.6	99.6	99.6	Extraction of energy producing materials
99.6	99.6	99.6	99.6	99.6	99.6	99.6	Mining of coal and lignite, extraction of peat
95.4	94.1	89.6	89.6	89.6	90.6	93.3	Mining and quarr. exc. energy produc. materials
93.3	93.3	87.8	87.8	87.8	87.8	87.8	Mining of metal ores
104.5	97.5	97.5	97.5	97.5	102.7	116.7	Other mining and quarrying
105.5	106.4	106.4	106.0	107.0	106.8	106.9	Manufacturing
102.3	106.6	106.3	106.1	110.4	110.3	109.6	Manuf. of food produc., beverages and tobacco
108.1	113.0	112.6	112.3	112.4	112.3	111.6	Manufacture of food products and beverages
58.3	58.3	58.3	58.3	94.8	94.8	94.8	Manufacture of tobacco products
110.0	110.0	110.0	110.0	110.0	110.0	110.0	Manufacture of textile and textile products
110.0	110.0	110.0	110.0	110.0	110.0	110.0	Manufacture of wearing apparel and fur
100.0	100.0	100.0	100.0	100.0	100.0	100.0	Manufacture of leather and leather products
100.0	100.0	100.0	100.0	100.0	100.0	100.0	Manufac. of leather products and footwear
94.3	94.3	94.7	94.7	95.0	95.1	95.1	Manufacture of wood and wood products
94.3	94.3	94.7	94.7	95.0	95.1	95.1	Manufac. of wood product, cork and similar
100.4	100.6	100.4	100.4	100.4	100.4	100.4	Manufacture of paper, publishing and printing
102.9	102.9	102.9	102.9	102.9	102.9	102.9	Manufac. of pulp, paper and paper products
99.5	99.8	99.5	99.5	99.5	99.5	99.5	Publishing, printing and reproduction
103.0	103.0	103.0	103.0	103.0	101.0	104.4	Manufacture of chemical products and fibres
103.0	103.0	103.0	103.0	103.0	101.0	104.4	Manuf. of chemicals and chemical products
100.0	100.0	100.0	100.0	100.0	100.0	100.0	Manufacture of rubber and plastic products
100.0	100.0	100.0	100.0	100.0	100.0	100.0	Manufacture of rubber and plastic products
90.6	91.1	92.0	91.7	92.3	92.3	91.3	Manufacture of other non-metal minerals
90.6	91.1	92.0	91.7	92.3	92.3	91.3	Manuf. of other non-metal mineral products
111.4	111.4	111.4	110.6	110.6	110.6	110.6	Manufac. of basic metals and metal products
112.6	112.6	112.6	111.7	111.7	111.7	111.7	Manufacture of basic metals
94.6	94.6	94.6	95.0	95.0	95.0	95.0	Manuf. of metal products except machinery
97.8	97.8	97.8	97.8	97.8	97.8	97.8	Manufacture of other machinery and equipment
97.8	97.8	97.8	97.8	97.8	97.8	97.8	Manuf. of other machinery and equipment
97.3	97.3	97.3	97.3	97.3	97.3	97.3	Manufacturing n.e.c.
97.3	97.3	97.3	97.3	97.3	97.3	97.3	Manufac. of furniture and related products
100.0	97.4	97.4	97.4	97.4	97.4	97.4	Electricity, gas and water supply
100.0	97.4	97.4	97.4	97.4	97.4	97.4	Electricity, gas and water supply
100.0	97.4	97.4	97.4	97.4	97.4	97.4	Electricity, gas and water supply
							Chosen groups of products
97.7	97.7	98.0	98.1	98.2	97.2	98.2	Elements and material for building in the construction

INDEKSI POTROŠAČKIH CIJENA PO GRUPAMA PROIZVODA
RETAIL BY GROUPS OF PRODUCTS

	2010 2009	$\frac{I - IX\ 2011}{I - IX\ 2010}$	Ø 2010 = 100					
			2010				2011	
			IX	X	XI	XII	I	II
Hleb i žitarice	99.9	110.1	100.0	100.4	101.2	101.2	101.0	101.7
Meso	100.5	99.0	100.2	101.1	101.0	100.4	98.3	98.6
Riba	108.3	91.4	97.2	97.2	97.3	94.9	94.4	94.5
Mlijeko, sir i jaja	100.0	99.0	100.5	100.5	100.6	97.3	96.5	97.3
Ulje i masti	92.7	124.7	109.1	112.3	114.5	114.3	116.7	117.9
Voće	99.3	104.1	104.5	95.3	89.0	94.2	98.3	98.6
Povrće	100.5	107.3	95.0	99.1	102.4	105.0	108.7	116.8
Šećer, med, pekmez i ost. slat.	106.1	109.8	101.4	104.5	106.0	105.9	103.2	105.7
Ostali prehrambeni proizvodi	98.3	103.0	99.8	99.8	100.6	100.5	100.8	101.8
Bezalkoholna pića	99.8	107.6	102.7	104.7	104.5	104.2	104.5	105.9
Alkoholna pića	99.2	103.6	99.4	99.4	99.3	99.3	101.3	102.7
Duvan	101.7	125.9	100.0	100.0	100.0	100.0	115.4	115.4
Materijal za odjeću	100.2	100.2	100.2	100.3	100.3	100.3	100.3	100.1
Odjeća	99.8	97.4	99.7	99.7	99.8	99.7	97.6	97.4
Ostalo za odjeću	97.6	101.6	99.8	100.3	100.3	100.3	100.8	100.8
Čišćenje i iznajmljivanje odjeće	99.8	101.2	99.5	99.5	98.9	98.6	99.7	100.7
Obuća	100.7	99.0	100.5	100.5	101.0	101.0	98.5	98.4
Popravka i iznajmljivanje obuće	101.1	99.8	99.9	99.9	99.9	99.9	98.6	98.3
Održavanje i popravke za stan	100.5	101.5	100.2	100.1	100.9	99.4	100.5	103.5
Snadbijevanje vodom	100.9	111.1	99.8	99.8	99.8	101.8	101.8	101.8
Elektr. energija, plin i ost. goriva	90.8	97.6	99.2	99.2	99.4	99.4	99.4	99.4
Namještaj i pokućstvo	94.7	95.4	100.0	100.0	100.0	99.6	97.4	96.9
Tekstilni proizvodi za kuću	104.2	100.7	99.8	99.8	99.8	99.8	99.3	99.2
Kućni aparati	95.5	100.7	99.7	99.7	100.6	100.5	100.4	100.6
Stakleno, stono posudje	94.0	97.4	98.3	98.3	98.2	98.3	97.8	97.6
Alati i oprema za kuću	96.0	93.0	99.9	99.5	99.5	99.4	93.4	91.1
Dobra i usluge za potrošnju	97.0	100.1	100.7	100.7	100.8	100.6	100.0	99.9
Zdravlje	102.1	112.9	100.0	100.0	102.4	102.3	106.6	109.4
Kupovina vozila	99.8	100.0	100.0	100.0	100.0	100.0	100.0	100.0
Oprema za održavanje vozila	116.4	109.2	100.1	100.2	100.1	103.7	103.7	106.2
Prevozne usluge	104.5	111.5	99.9	100.0	100.2	100.2	100.0	103.1
Komunikacije	100.0	100.5	100.0	100.1	100.1	100.1	100.1	100.1
Kultura i rekreacija	98.3	95.6	99.3	99.2	99.8	99.3	96.5	95.9
Obrazovanje	100.0	99.6	99.9	100.0	100.2	100.0	99.7	99.7
Restorani i hoteli	102.4	103.9	100.1	100.2	100.3	100.1	103.5	103.5
Ostala dobra i usluge	100.7	100.6	99.5	99.5	100.2	99.9	100.3	100.1

INDEKSI POTROŠAČKIH CIJENA PO GRUPAMA PROIZVODA
RETAIL BY GROUPS OF PRODUCTS

Ø 2010 = 100							
2011							
III	IV	V	VI	VII	VIII	IX	
110.5	111.8	106.0	112.7	113.2	112.2	112.2	<i>Breads and cereals</i>
98.8	98.9	98.6	98.5	98.8	99.6	98.1	<i>Meat</i>
93.9	92.3	90.9	91.3	92.0	91.1	91.5	<i>Fish</i>
98.4	100.0	99.8	100.3	100.6	100.9	99.2	<i>Milk, cheese, eggs</i>
119.2	119.1	120.2	120.2	120.1	119.9	117.7	<i>Oils and fats</i>
102.7	103.4	121.4	116.5	108.4	105.4	104.4	<i>Fruit</i>
130.8	128.7	118.2	91.0	84.7	88.9	91.3	<i>Vegetables</i>
108.0	108.9	108.4	107.9	108.5	110.0	109.9	<i>Sugar, honey, jam, etc.</i>
103.2	103.3	102.0	102.0	103.8	104.2	104.4	<i>Other alimentary products</i>
106.0	106.0	106.1	106.5	106.4	105.6	107.0	<i>Non-alcoholic beverages</i>
103.0	103.8	103.9	103.8	104.7	105.6	105.6	<i>Alcoholic beverages</i>
115.4	115.4	115.4	139.1	139.1	139.1	139.1	<i>Tobacco</i>
100.1	100.1	100.1	100.1	100.1	100.1	100.1	<i>Material for clothes</i>
97.2	96.6	97.1	97.1	97.1	97.4	99.6	<i>Clothes</i>
101.0	101.3	101.3	101.5	101.5	101.5	103.8	<i>Other for clothes</i>
101.9	101.6	101.6	101.9	101.9	103.5	101.3	<i>Cleaning and renting of clothes</i>
98.9	98.9	98.6	99.7	99.7	97.4	98.3	<i>Footwear</i>
100.3	100.3	100.3	100.3	100.3	100.3	100.3	<i>Repairing and renting of footwear</i>
103.5	103.5	101.0	100.7	100.5	100.3	99.8	<i>Maintaince and reparation of flats</i>
101.8	101.8	103.3	104.0	104.0	139.9	139.9	<i>Water</i>
99.4	97.0	97.0	97.0	97.0	97.0	96.9	<i>Electricity, petrol, and oth. fuels</i>
96.8	96.4	96.1	93.8	93.8	93.8	93.8	<i>Furniture and household furnish.</i>
99.0	98.4	98.4	102.6	102.6	103.2	103.6	<i>Textile products for house</i>
100.6	100.6	100.6	100.7	100.7	100.6	100.6	<i>Household aparatures</i>
97.5	97.5	97.5	98.5	98.5	98.4	98.5	<i>Glass, table ware</i>
91.0	91.0	90.1	95.0	95.0	96.2	95.2	<i>Tools and equipment for house</i>
99.9	99.9	99.3	99.9	99.9	100.4	99.5	<i>Goods and services for consumpt.</i>
110.6	110.9	109.6	115.4	115.5	116.5	116.5	<i>Health care</i>
100.0	100.0	100.0	100.0	100.0	100.0	100.0	<i>Buying of vehicles</i>
110.4	110.9	110.0	109.0	109.3	109.7	109.3	<i>Equip. for maintaining of vehicles</i>
113.7	115.3	114.4	114.1	114.1	114.2	114.5	<i>Transport services</i>
100.1	100.1	100.1	100.9	101.0	101.0	101.0	<i>Communications</i>
95.9	95.9	95.5	95.4	95.4	95.7	95.5	<i>Culture and recreations</i>
99.7	99.7	99.6	99.6	99.6	99.4	99.4	<i>Education</i>
103.7	103.8	103.8	104.3	104.2	104.2	103.1	<i>Restaurants and hotels</i>
100.3	100.3	100.2	100.4	100.4	100.6	103.1	<i>Other goods and services</i>

INDEKSI POTROŠAČKIH CIJENA / CONSUMER PRICES INDEX

Ø 2010 = 100

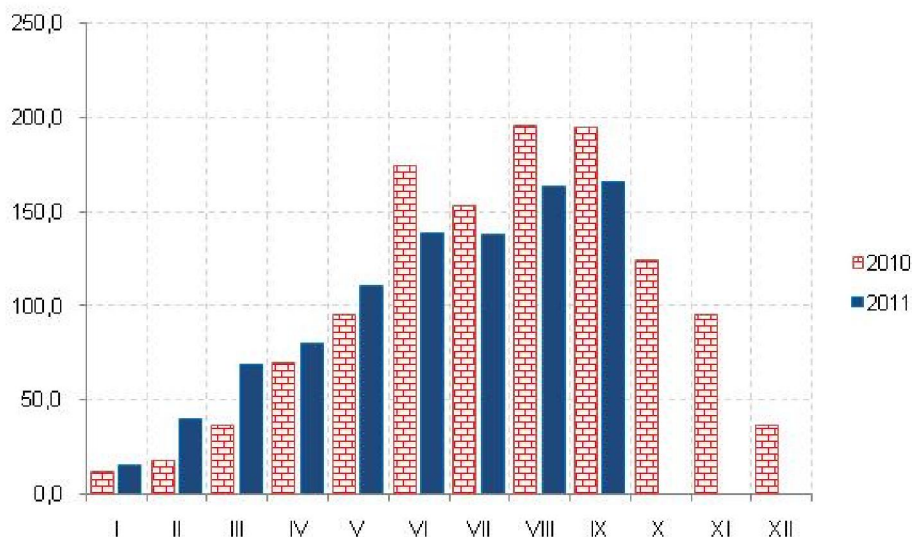
	Potrošačke cijene ukupno <i>Consumer prices-total</i>	Hrana i bezalkoholna pića <i>Food and non alcoholic beverage</i>	Alkoholna pića i duvan <i>Alcoholic beverages and tobacco</i>	Odjeća i obuća <i>Clothing and Footwear</i>	Stanovanje <i>Renting</i>	Pokućstvo i oprema za kuću <i>Household furnishings</i>
2008	96.2	96.5	92.6	99.0	94.3	106.1
2009	99.5	99.7	99.3	99.8	107.5	103.3
2010	100.0	100.0	100.0	100.0	100.0	100.0
Ø I - IX 2010	99.9	99.7	100.1	99.9	100.3	99.9
Ø I - IX 2011	102.9	103.3	116.8	98.1	98.9	99.1
2010						
IX	100.0	100.4	99.7	100.0	99.3	100.0
X	100.2	100.9	99.7	100.1	99.3	100.1
XI	100.4	101.1	99.7	100.3	98.8	100.3
XII	100.5	100.7	99.7	100.3	99.0	100.2
2011						
I	100.7	100.6	109.6	98.0	99.0	99.3
II	101.7	102.2	110.1	97.9	99.2	99.2
III	103.8	105.6	110.3	98.0	99.2	99.1
IV	103.8	106.0	110.6	97.7	97.4	103.8
V	103.6	106.0	110.7	97.9	97.4	98.7
VI	103.1	102.9	124.5	98.3	97.5	99.1
VII	102.8	101.9	124.9	98.3	97.5	99.1
VIII	103.5	102.3	125.2	97.5	101.4	99.4
IX	103.4	101.8	125.2	99.1	101.2	99.1
I – IX 2011/I – IX 2010	103.1	103.6	116.7	98.1	98.6	99.2

/nastavak /

/ continued /

	Zdravlje <i>Health care</i>	Prevoz <i>Transport</i>	Komunikacije <i>Communications</i>	Kultura i rekreacija <i>Culture and recreation</i>	Obrazovanje <i>Education</i>	Restorani i hoteli <i>Restaurants and hotels</i>	Ostala dobra i usluge <i>Other goods and services</i>
2008	95.4	94.4	96.4	101.2	100.0	89.4	98.0
2009	98.0	90.4	100.0	101.7	100.0	97.6	99.3
2010	100.0	100.0	100.0	100.0	100.0	100.0	100.0
Ø I - IX 2010	99.5	99.7	100.0	100.2	100.0	99.9	100.0
Ø I - IX 2011	112.3	108.7	100.5	95.7	99.6	103.8	100.6
2010							
IX	100.0	100.0	100.0	99.3	99.9	100.1	99.5
X	100.0	100.1	100.1	99.2	100.0	100.2	99.5
XI	102.4	100.1	100.1	99.8	100.2	100.3	100.2
XII	102.3	102.1	100.1	99.3	100.0	100.1	99.9
2011							
I	106.6	102.1	100.1	96.5	99.7	103.5	100.3
II	109.4	104.5	100.1	95.9	99.7	103.5	100.1
III	110.6	110.4	100.1	95.9	99.7	103.7	100.3
IV	110.9	111.2	100.1	95.9	99.7	103.8	110.9
V	109.6	110.4	100.1	95.5	99.6	103.8	100.2
VI	115.4	109.7	100.9	95.4	99.6	104.3	100.4
VII	115.5	109.9	101.0	95.4	99.6	104.2	100.4
VIII	116.5	110.1	101.0	95.7	99.4	104.2	100.6
IX	116.5	110.0	101.0	95.5	99.4	103.1	103.1
I – IX 2011/I – IX 2010	112.9	109.0	100.5	95.6	99.6	103.9	100.6

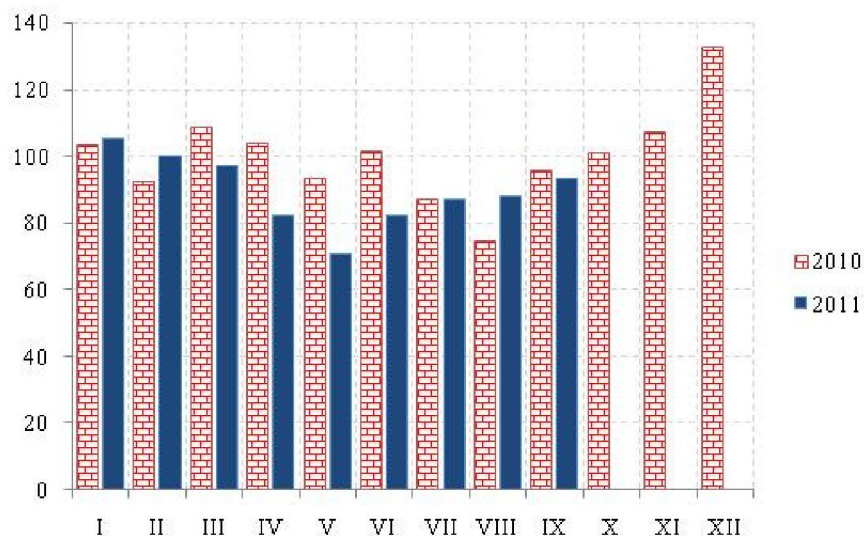
ŠUMARSTVO / FORESTRY



Ø 2010 = 100

	Indeks Index	Ukupno Total	Proizvedeni sortimenti, m³ / Production of forests assortments						
			Četinara / Conifers				Lišćara / Deciduous trees		
			trupci Saw logs	tehničko drvo Lumber	prostorno drvo Space wood	ogrijevno drvo Firewood	trupci Saw logs	prostorno drvo Space wood	ogrijevno drvo Firewood
2006	130.3	325896	194057	11808	12798	1334	46736	15406	43754
2007	105.0	263787	151440	8878	12623	367	45000	14388	31091
2008	113.0	281260	160901	13090	17492	861	46467	9655	32794
2009	85.7	216546	128520	6525	10992	2149	29121	5748	33491
2010	100.0	256410	146074	10373	19993	504	32851	6349	40266
Ø I - IX 2010	122.5	201009	113481	8097	14804	488	28336	4357	31446
Ø I - IX 2011	102.2	204351	99713	4712	24350	281	35415	7118	32762
2010									
IX	194	42465	23209	1791	3471	3	5278	579	8134
X	123.9	26630	15554	1114	2011	1	2679	1112	4159
XI	95	20923	12269	890	2270	1	1412	722	3359
XII	36.3	7848	4770	272	908	14	424	158	1302
2011									
I	15.3	2955	2088	93	353	-	254	1	166
II	39.8	8166	5396	333	1864	-	333	54	186
III	69.2	14098	8280	430	2377	-	1864	358	789
IV	79.7	16910	9307	507	3402	28	2250	365	1051
V	110.8	24223	12153	680	3299	34	4348	750	2959
VI	138.3	31537	14736	694	396.3	60	5458	1165	5461
VII	137.5	31990	13086	651	2767	61	6983	1443	6999
VIII	163.3	37742	16055	585	3222	67	7707	1581	8525
IX	165.5	36730	18612	739	3103	31	6218	1401	6626
I – IX 2011/I – IX 2010	93.4	101.7	87.9	58.2	1645	57.6	125	163.4	104.2

INDUSTRIJA / INDUSTRY
INDEKSI INDUSTRIJSKE PROIZVODNJE – po sektorima
INDICES OF INDUSTRIAL PRODUCTION – by sectors



Ø 2010= 100

	INDUSTRIJA Ukupno <i>INDUSTRY Total</i>	Vađenje ruda i kamena <i>Mining and quarrying</i>	Prerađivačka industrija <i>Manufacturing</i>	Proizvodnja električne energije, gasa i vode <i>Electricity, gas and water supply</i>
2006	127.9	152.9	173.3	70.7
2007	128.0	155.3	189.2	51.4
2008	125.5	182.6	167.9	67.8
2009	85.1	63.0	103.1	66.2
2010	100.0	100.0	100.0	100.0
Ø I - IX 2010	95.5	91.0	95.7	95.8
Ø I - IX 2011	89.6	102.6	105.1	69.5
2010				
IX	95.4	139.5	119.9	60.8
X	100.7	219.1	113.6	71.0
XI	107.3	82.4	111.6	105.1
XII	132.7	79.7	113.7	161.9
2011				
I	105.5	90.1	82.2	135.3
II	99.9	80.1	95.7	107.3
III	97.2	87.7	103.3	91.1
IV	82.5	89.2	94.6	67.3
V	70.5	50.3	103.5	33.4
VI	82.4	81.7	117.0	40.9
VII	87.1	99.6	113.7	53.8
VIII	88.0	118.7	120.1	45.8
IX	93.5	226.6	115.5	51.1
I – IX 2011/I – IX 2010	93.8	112.7	109.8	72.5

INDEKSI INDUSTRIJSKE PROIZVODNJE – po podsektorima
INDICES OF INDUSTRIAL PRODUCTION – by sub-sectors

Ø 2010 = 100

	Vađenje energetske sirovine <i>Extraction of energy producing materials</i>	Vađenje ostalih sirovina i materijala <i>Mining and quarrying except energy producing materials</i>	Prehrambeni proizvodi, pića i duvan <i>Manufacture of food products, beverages and tobacco</i>	Proizvodnja tekstila i tekstilnih proizvoda <i>Manufacture of textile and textile products</i>
2006	81.6	329.2	110.3	1170.3
2007	63.8	382.2	109.5	1081.4
2008	89.4	414.1	124.4	863.1
2009	51.0	92.8	110.4	117.4
2010	100.0	100.0	100.0	100.0
Ø I - IX 2010	96.5	77.3	102.1	
Ø I - IX 2011	94.8	122.1	98.4	90.7
				95.5
2010				
IX	119.5	188.9	102.2	85.3
X	137.7	420.9	95.0	67.9
XI	97.4	45.1	88.7	114.3
XII	96.3	38.5	97.5	201.7
2011				
I	98.4	69.4	64.3	91.5
II	96.2	40.1	70.9	83.0
III	94.6	70.5	88.6	91.5
IV	97.1	69.7	90.9	91.5
V	40.0	75.6	95.0	79.9
VI	102.0	31.3	113.8	152.2
VII	105.7	84.3	130.0	62.0
VIII	102.6	158.4	134.6	94.1
IX	116.2	499.8	97.7	114.2
I – IX 2011/I – IX 2010	98.2	158.0	96.4	105.3

/nastavak/

/continued/

	Proizvodnja kože i predmeta od kože <i>Manufacture of leather and leather products</i>	Prerada drveta i proizvodi od drveta <i>Manufacture of wood and wood products</i>	Proizvodnja papira, izdavanje i štampanje <i>Manufacture of paper, publishing and printing</i>	Proizvodnja hemijskih proizvoda i vlakana <i>Manufacture of chemical products and fibres</i>
2006	897.4	189.2	107.2	64.8
2007	1462.8	191.7	113.3	98.8
2008	3159.7	145.6	105.6	64.4
2009	432.9	95.7	97.9	91.5
2010	100.0	100.0	100.0	100.0
Ø I - IX 2010	-	89.5	97.4	88.4
Ø I - IX 2011	-	126.1	90.6	79.1
2010				
IX	400.0	158.1	108.2	185.3
X	-	156.0	101.7	155.2
XI	-	117.7	107.7	120.6
XII	-	121.0	113.7	128.6
2011				
I	-	15.8	87.2	39.2
II	-	55.8	86.1	115.0
III	-	81.5	82.2	121.6
IV	-	125.0	84.1	60.0
V	-	133.2	88.9	87.0
VI	-	173.3	101.4	79.8
VII	-	166.9	102.2	72.2
VIII	-	197.8	105.2	59.3
IX	-	185.7	77.9	77.6
I – IX 2011/I – IX 2010	-	140.9	93.0	89.5

INDEKSI INDUSTRIJSKE PROIZVODNJE – po podsektorima
INDICES OF INDUSTRIAL PRODUCTION – by sub-sectors

Ø 2010 = 100

/nastavak /

/continued/

	Proizvodnja proizvoda od gume i plastičnih masa <i>Manufacture of rubber and plastic products</i>	Proizvodnja proizvoda od ostalih nemetalnih minerala <i>Manufacture of other non-metal minerals</i>	Proizvodnja osnovnih metala i metalnih proizvoda <i>Manufacture of basic metals and metal products</i>
2006	451.5	135.0	261.9
2007	458.7	134.3	289.4
2008	291.3	131.4	252.0
2009	167.8	76.2	117.2
2010	100.0	100.0	100.0
Ø I - IX 2010	101.2	95.7	96.6
Ø I - IX 2011	97.8	111.1	112.8
2010			
IX	131.4	109.1	106.4
X	127.0	114.0	104.7
XI	65.7	110.8	116.2
XII	96.4	113.6	110.0
2011			
I	17.5	114.2	101.4
II	78.8	102.3	97.3
III	105.1	113.3	98.4
IV	78.8	108.6	100.2
V	148.9	112.2	105.1
VI	122.6	112.8	128.1
VII	96.4	113.6	120.0
VIII	127.0	112.4	131.6
IX	105.1	110.3	133.0
I – IX 2011/I – IX 2010	96.6	116.1	116.8

/nastavak /

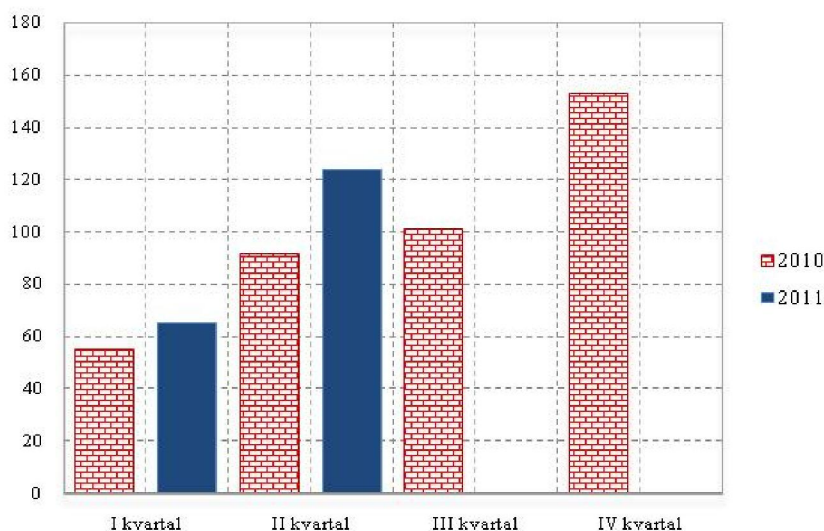
/continued/

	Proizvodnja mašina i uređaja, ostala <i>Manufacture of other machinery and equipment</i>	Proizvodnja saobraćajnih sredstava <i>Manufacture of transport equipment</i>	Prerađivačka industrija, ostala <i>Manufacturing n.e.c.</i>	Proizvodnja električne energije, gasa i vode <i>Electricity, gas and water supply</i>
2006	65.6	170.4	245.3	70.7
2007	63.5	166.4	242.3	51.4
2008	59.9	142.5	252.2	67.8
2009	65.4	125.5	129.9	66.2
2010	100.0	100.0	100.0	100.0
Ø I - IX 2010	92.1	92.8	95.5	95.8
Ø I - IX 2011	123.1	106.3	48.5	69.5
2010				
IX	108.0	100.4	103.8	60.8
X	109.8	111.0	96.2	71.0
XI	123.2	126.9	109.6	105.1
XII	138.2	126.9	134.9	161.9
2011				
I	78.9	126.9	31.7	135.3
II	114.8	126.9	36.2	107.3
III	128.7	126.9	46.0	91.1
IV	119.6	89.9	36.7	67.3
V	136.4	89.9	56.9	33.4
VI	127.3	148.0	66.1	40.9
VII	114.6	95.2	48.3	53.8
VIII	145.5	79.3	57.1	45.8
IX	141.9	74.0	57.1	51.1
I – IX 2011/I – IX 2010	133.7	114.5	50.8	72.5

GRAĐEVINARSTVO / CONSTRUCTION

Vrijednost izvršenih radova u hiljadama EUR / Value of finalized construction works

Ø 2009 = 100


VRIJEDNOST IZVRŠENIH I UGOVORENIH RADOVA, BROJ ZAPOSLENIH I IZVRŠENI EFEKTIVNI ČASOVI
VALUE OF FINALIZED AND ORDERED WORKS, NUMBER OF EMPLOYEES AND FINALIZED EFFECTIVE HOURS

	Indeks Index	Vrijednost izvršenih radova u hiljadama EUR Value of finalized construction works	Broj radnika na gradilištu na kraju izvještajnog kvartala Number of workers at the construction site at the reporting quarter	Indeks Index	Izvršeni efektivni časovi u 000 Finalized effective hours in thousands	
2008	112.6	287931	4200	124.8	9994	2008
2009	88.4	225953	3665	100.8	8071	2009
2010	100.0	255617	3704	100.0	8008	2010
2010 I kvartal	55.1	34135	3409	87.4	1708	2010 I quarter
II kvartal	91.2	58539	3627	98.0	1975	II quarter
III kvartal	101.0	64838	3633	100.2	2019	III quarter
IV kvartal	152.7	98105	4147	114.4	2306	IV quarter
2011 I kvartal ¹⁾	65.1	41826	4329	108.9	2194	2011 I quarter ¹⁾
II kvartal	123.7*	79448*	4909*	128.9*	2598*	II quarter
III kvartal	III quarter

/ nastavak/

/continued/

	Indeks Index	Nove narudžbe na zgradama u hilj. EUR New orders on buildings, thous. EUR	Indeks Index	Nove narudžbe na ostalim građevinama u hilj. EUR New orders on other buildings, thous. EUR	
2008	166.7	85145	124.8	124524	2008
2009	91.6	46816	94.6	94394	2009
2010	100	51081	100.0	99795	2010
2010 I kvartal	109.2	13923	23.8	6371	2010 I quarter
II kvartal	30.2	3857	221.5	54332	II quarter
III kvartal	52.6	6719	74.4	18244	III quarter
IV kvartal	208.0	26582	80.3	20848	IV quarter
2011 I kvartal ¹⁾	83.8	10702	18.1	4427	2011 I quarter ¹⁾
II kvartal	50.9*	6502*	47.0*	11513*	II quarter
III kvartal	III quarter

¹⁾ Prethodni podaci¹⁾ Preliminary data

SPOLJNA TRGOVINA / EXTERNAL TRADE¹⁾
Izvoz i uvoz po zemljama, u hilj. EUR / Exports and imports by countries, thous EUR

	Izvoz / Export			Uvoz / Import			
	I - IX 2010	I - IX 2011	Indeks / Index	I - IX 2010	I - IX 2011	Indeks / Index	
			<u>I - IX 2011</u> I - IX 2010			<u>I - IX 2011</u> I - IX 2010	
UKUPNO	229100.9	331530.6	144.7	1225933.3	1363602.7	111.2	TOTAL
Evropa	224962.0	328464.1	146.0	1072375.7	1191242.8	111.1	Europe
Albanija	5752.1	8959.7	155.8	6523.6	9814.4	150.4	Albania
Austrija	2292.9	4886.2	213.1	39623.1	26867.4	67.8	Austria
Belgija-Luxemburg	122.9	797.2	648.8	5298.0	4412.1	83.3	Belgium – Luxembourg
BiH (sa Rep. Srpskom)	16130.0	14987.5	92.9	89784.4	102413.2	114.1	B&H (with RS)
Bugarska	79.0	9.1	11.5	4638.6	4937.1	106.4	Bulgaria
Velika Britanija	3621.4	3165.6	87.4	10329.8	10076.9	97.6	Great Britain
Grčka	43282.9	36068.8	83.3	78790.5	114675.4	145.5	Greece
Danska	2.4	21.8	900.4	2325.4	2195.8	94.4	Denmark
Italija	25290.9	25482.8	100.8	75517.8	76926.8	101.9	Italy
Mađarska	22625.8	64057.6	283.1	9311.3	9188.1	98.7	Hungary
Njemačka	1904.1	13342.1	700.7	87691.5	76178.3	86.9	Germany
Slovenija	15177.4	23460.5	154.6	43557.5	46414.8	106.6	Slovenia
Poljska	422.1	2589.1	613.5	7656.3	10012.2	130.8	Poland
Makedonija	613.8	903.3	147.2	17383.9	19602.4	112.8	Macedonia
Rumunija	2282.2	57.1	2.5	14008.5	21863.8	156.1	Romania
Ruska federacija	1101.6	1697.5	154.1	18022.1	5253.6	29.2	Russian Federation
Srbija ²⁾	51919.2	60065.5	115.7	321693.7	393477.6	122.3	Serbia
Hrvatska	2867.4	22484.6	784.2	61442.6	66352.1	108.0	Croatia
Francuska	1090.3	1230.3	112.8	20571.7	20584.3	100.1	France
Holandija	5573.6	2430.7	43.6	19521.9	18326.0	93.9	Netherlands
Češka Republika	2141.4	5231.0	244.3	9899.5	14095.6	142.4	Czech Republic
Švajcarska	1722.2	9778.1	567.8	13143.3	9908.3	75.4	Switzerland
Švedska	345.3	1138.3	329.7	3431.7	3949.9	115.1	Sweden
Španija	63.0	293.1	465.2	17814.4	16174.0	90.8	Spain
Turska	3675.2	7902.2	215.0	21650.6	19610.4	90.6	Turkey
Ostale zemlje	14863.1	17424.5	117.2	72744.2	87932.5	120.9	Other countries
Azija	2854.0	2072.8	72.6	108538.4	123900.7	114.2	Asia
Irak	0.0	0.0	0.0	0.0	0.0	0.0	Irak
Izrael	0.2	17.4		662.9	950.6	143.4	Israel
Indija	0.0	0.0	0.0	3607.2	5092.7	141.2	India
Indonezija	0.0	0.0	0.0	2068.3	2868.9	138.7	Indonesia
Japan	159.5	968.6	607.2	15335.9	13819.0	90.1	Japan
Kina	47.5	238.9	503.5	63016.9	77502.4	123.0	China
Koreja	0.0	0.4	0.0	8263.7	7105.0	86.0	Korea
Tajland	0.0	0.0	0.0	2453.0	3484.4	142.0	Thailand
Hong Kong	59.0	234.3	396.8	601.1	619.5	103.1	Hong Kong
Ostale zemlje	2587.8	613.3	23.7	12529.6	12458.2	99.4	Other countries
Afrika	711.1	418.2	58.8	3959.1	12935.5	326.7	Africa
Egipat	628.3	241.8	38.5	861.1	8187.1	950.8	Egypt
Etiopija	0.0	0.0	0.0	8.2	49.6	0.0	Ethiopia
Libijska Araps.Džamah.	1.2	0.0	0.0	0.0	0.0	0.0	Libyan Arab.Jamahiriya
Maroko	0.0	0.0	0.0	286.5	243.2	84.9	Morocco
Tunis	0.0	0.0	0.0	491.9	608.8	123.8	Tunis
Ostale zemlje	81.7	176.5	216.0	2311.4	3846.7	166.4	Other countries
Amerika	400.4	478.1	119.4	40504.6	35187.0	86.9	America
Kanada	65.0	35.7	54.9	957.7	989.0	103.3	Canada
Panama	0.0	1.0	0.0	15.0	22.5	150.0	Panama
SAD	285.6	360.3	126.2	11308.7	10206.2	90.3	USA
Argentina	0.0	0.0	0.0	1106.2	1285.6	116.2	Argentina
Brazil	31.1	1.0	3.3	22499.1	17111.1	76.1	Brazil
Ekvador	0.0	0.0	0.0	2415.8	2671.8	110.6	Ecuador
Kolumbija	0.0	0.0	0.0	191.3	586.4	306.5	Columbia
Peru	0.0	0.0	0.0	45.9	112.9	246.0	Peru
Devičanska ostrva	2.8	0.0	0.0	7.2	0.0	0.0	The Virgin Islands
Ostale zemlje	16.1	80.1	499.2	1957.7	2201.5	112.5	Other countries
Australija i Okeanija	173.3	97.4	56.2	555.6	336.7	60.6	Australia and Oceania
Australija	40.8	97.4	238.7	246.0	263.2	107.0	Australia
Novi Zeland	0.0	0.0	0.0	306.3	62.5	20.4	New Zealand
Ostale zemlje	132.5	0.0	0.0	3.4	11.0	325.7	Other countries

¹⁾ Prethodni podaci²⁾ Za 2010 bez podataka za Kosovo i Metohiju¹⁾ Previous data²⁾ Without data for Kosovo and Metohia in 2010

SPOLJNA TRGOVINA / EXTERNAL TRADE

Izvoz i uvoz robe, hilj. EUR / Exports and imports of goods, thous EUR

	Izvoz / Export			Uvoz / Import			
	I - IX 2010	I - IX 2011	Indeks / Index	I - IX 2010	I - IX 2011	Indeks / Index	
			<u>I - IX 2011</u> I - IX 2010			<u>I - IX 2011</u> I - IX 2010	
Ukupno	229100.8	331530.6	144.7	1225933.3	1363602.7	111.2	Total
Zive životinje	8.6	12.4	143.4	16401.8	19308.6	117.7	Live animals
Meso i drugi klanični proizvodi za jelo	2491.7	1980.4	79.5	44316.8	39876.4	90.0	Meat and edible meat offal
Ribe, ljuskari, mekušci i ostali vodeni beskičmenjaci	103.0	106.6	103.5	4512.8	5300.4	117.5	Fish and crustaceans, molluscs and other aquatic invertebrates
Mlijeko i proizvodi od mlijeka, živinska i ptičja jaja, prirodni med, jestivi proizvodi životinskog porijekla, nepomenuti niti obuhvaćeni na drugom mjestu	1.1	74.5		29252.4	33306.1	113.9	Dairy produce; birds' eggs; natural honey; edible products of animal origin, not elsewhere specified or included
Proizvodi životinskog porijekla, na drugom mjestu nepomenuti niti obuhv.	7.1	0.0	0.0	174.8	141.6	81.0	Products of animal origin, not elsewhere specified or included
Živo drveće i druge biljke; lukovice, korijenje i slično; siječeno cvijeće i ukrasno lišće	27.2	80.6	296.3	2164.7	2981.6	137.7	Live trees and other plants; bulbs, roots and the like; cut flowers and ornamental foliage
Povrće, korijenje i krtole za jelo	1918.4	1891.5	98.6	5000.0	6116.4	122.3	Edible veg. and certain roots and tub.
Voće za jelo, uključujući jezgrasto voće; kore agruma ili dinja i lubenica	4073.4	4010.9	98.5	8920.5	10406.9	116.7	Edible fruit and nuts; peel of citrus fruits or melons
Kafa, čaj, mate čaj i začini	75.3	208.8	277.3	18745.8	15791.3	84.2	Coffee, tea, maté and spices
Žitarice	19.6	23.3	118.9	4071.4	8930.2	219.3	Cereals
Proizvodi mlinске industrije; slad; skrob; inulin; gluten od pšenice	529.7	345.3	65.2	11644.3	16797.1	144.3	Products of the milling industry; malt; starches; inulin; wheat gluten
Uljano sjemenje i plodovi; razno zmevlje, sjeme i plodovi; industrijsko i ljekovito bilje; slama i stočna hrana (kabasta)	79.8	114.9	143.9	1458.1	1413.7	96.9	Oil seeds and oleaginous fruits; miscellaneous grains, seeds and fruit; industrial or medicinal plants; straw and fodder
Seljak; gume, smole i ostali biljni sokovi i ekstrakti	1.0	0.0	0.0	33.7	27.4	81.1	Lac; gums, resins and other vegetable saps and extracts
Biljni materijali za petarstvo; biljni proiz na drugom mjestu nepomenuti niti obuh.	0.2	0.0	0.0	31.7	56.2	177.6	Vegetable plaiting materials; vegetable produc. not elsewhere specified or incl.
Masnoće i ulja životinskog ili biljnog porijekla i proizvodi njihovog razlaganja; prerađene jestive masnoće; voskovi životinskog i biljnog porijekla	643.4	563.7	87.6	9786.6	12386.4	126.6	Animal or vegetable fats and oils and their cleavage products; prepared edible fats; animal or vegetable waxes
Prerađevine od mesa, riba, ljuskara, mekušaca ili ostalih vodenih beskičmenjaka	1749.3	1629.9	93.2	15489.4	16989.8	109.7	Preparations of meat, of fish or of crustaceans, molluscs or other aquatic invertebrates
Šećer i proizvodi od šećera	290.0	491.5	169.5	6600.1	9029.2	136.8	Sugars and sugar confectionery
Kakao i proizvodi od kakaa	2068.8	1905.0	92.1	13737.9	14100.3	102.6	Cocoa and cocoa preparations
Proizvodi na bazi žitarica, brašna, skroba ili mlijeka; poslastičarski proizvodi	1427.5	1506.1	105.5	19799.2	20660.8	104.4	Preparations of cereals, flour, starch or milk; pastrycooks' products
Proizvodi od povrća, voća, uključujući jezgrasto voće, i ostalih dijelova bilja	915.0	742.0	81.1	12736.3	13758.7	108.0	Preparations of vegetables, fruit, nuts or other parts of plants
Razni proizvodi za ishranu	2273.6	2780.1	122.3	19936.7	21639.5	108.5	Miscellaneous edible preparations
Pića, alkoholi i sirće	12183.1	13186.9	108.2	36423.2	40958.7	112.5	Beverages, spirits and vinegar
Ostaci i otpaci prehrambene industrije; pripremljena hrana za životinje	83.8	64.8	77.3	9801.3	12043.6	122.9	Residues and waste from the food industries; prepared animal fodder
Duvan i proizvodi zamjene duvana	68.8	305.1	443.8	12615.0	10718.6	85.0	Tobacco and manuf. tobacco substitut.
So; sumpor; zemlja i kamen; gips; kreč i cement	2570.9	893.7	34.8	21934.6	18309.4	83.5	Salt; sulphur; earths and stone; plastering materials, lime and cement
Rude, zgure i pepeo	997.3	6392.2	640.9	100.4	229.4	228.4	Ores, slag and ash
Mineralna goriva, mineralna ulja i proizvodi njihove destilacije; bitumenozne materije; mineralni voskovi	23639.3	49154.3	207.9	147989.4	241754.3	163.4	Mineral fuels, mineral oils and products of their distillation; bituminous substances; mineral waxes
Neorganski hemijski proizvodi; organska ili neorganska jedinjenja plemenitih metala, metala rijetkih zemlji, radioaktivnih elemenata i izotopa	60.3	30.3	50.2	39510.9	48527.2	122.8	Inorganic chemicals; organic or norganic compounds of precious metals, of rare-earth metals, of radioactive elements or of isotopes
Organski hemijski proizvodi	114.0	58.3	51.2	2310.4	2111.1	91.4	Organic chemicals
Farmaceutski proizvodi	5051.4	5622.3	111.3	38422.1	39525.7	102.9	Pharmaceutical products
Đubriva	21.8	29.8	0.0	2008.7	2431.4	121.0	Fertilisers
Ekstrati za štavljenje ili bojenje; tanini i njihovi derivati; boje, pigmenti i ostale materije za bojenje; boje i lakovi; kitovi i ostale zaptivne mase; mastila	126.2	74.9	59.4	15202.5	15611.1	102.7	Tanning or dyeing extracts; tannins and their derivatives; dyes, pigments and other colouring matter; paints and varnishes; putty and other mastics; inks
Eterična ulja i rezinoidi; parfimerijski, kozmetički i toaletni proizvodi	797.3	496.2	62.2	16461.2	18408.0	111.8	Essential oils and resinoids; perfumery, cosmetic or toilet preparations

SPOLJNA TRGOVINA / EXTERNAL TRADE

Izvoz i uvoz robe, hilj. EUR / Exports and imports of goods, thous EUR

/ nastavak /	Izvoz / Export			Uvoz / Import			/continued /
	I - IX 2010	I - IX 2011	Indeks / Index	I - IX 2010	I - IX 2011	Indeks / Index	
			<u>I - IX 2011</u> I - IX 2010			<u>I - IX 2011</u> I - IX 2010	
Sapun, organska površinska aktivna sredstva, preparati za pranje, preparati za podmazivanje, vještački voskovi, pripremljeni voskovi, preparati za poliranje i čišćenje, svijeće i slični proizvodi, paste za modelovanje "zubarski voskovi" i zubarski preparati n	140.2	324.3	231.3	14275.5	15364.1	107.6	Soap, organic surface-active agents, washing preparations, lubricating preparations, artificial waxes, prepared waxes, polishing or scouring preparati-ons, candles and similar articles, modelling pastes, 'dental waxes' and dental preparatio
Bjelančevinaste materije; modifikovani skrobovi; lijepkovi; enzimi	6.3	67.4		2661.6	2653.1	99.7	Albuminoidal substances; modified starches; glues; enzymes
Eksplzivni; pirotehnički proizvodi; šibice; piroforme legure; zapaljivi preparati	503.5	260.9	51.8	388.9	216.3	55.6	Explosives; pyrotechnic products; matches; pyrophoric alloys; certain combustible preparations
Proizvodi za fotografske ili kinematografske svrhe	16.3	62.4	383.1	679.7	719.4	105.8	Photographic or cinematographic goods
Razni proizvodi hemijske industrije	54.7	1770.0		12755.3	10799.1	84.7	Miscellaneous chemical products
Plastične mase i proiz. od plastičnih masa	884.6	792.3	89.6	35245.8	35113.7	99.6	Plastics and articles thereof
Kaučuk i proizvodi od kaučuka i gume	180.6	221.7	122.7	10280.0	10905.5	106.1	Rubber and articles thereof
Sirova sitna i krupna koža, sa dlakom ili bez dlake (osim krzna) i štavljena koža	2960.1	3365.8	113.7	112.4	43.8	39.0	Raw hides and skins (other than furskins) and leather
Proizvodi od kože, sedlarski i sarački proizvodi, predmeti za putovanje, ručne torbe i slični kontejneri i proizvodi od životinjskih crijeva (osim svilenog ketguta)	53.3	62.4	116.9	4509.5	5234.9	116.1	Articles of leather; saddlery and harness; travel goods, handbags and similar containers; articles of animal gut (other than silkworm gut)
Prirodno i vještačko krzno; proizvodi od krzna	0.0	0.5	0.0	39.9	124.9	313.1	Furskins and artificial fur; manufactures thereof
Drvo i proizvodi od drveta; drveni ugali	11927.6	13407.1	112.4	18176.5	16807.7	92.5	Wood and artic. of wood; wood charcoal
Pluta i proizvodi od plute	0.1	0.0	0.0	497.0	594.8	119.7	Cork and articles of cork
Proizvodi od slame, esparta ili ostalih materijala za pletariju; korparskih i pletarskih proizvoda	0.9	0.0	0.0	149.8	151.3	101.0	Manufactures of straw, of esparto or of other plaiting materials; basketware and wickerwork
Celuloza od drveta ili drugih vlaknastih celuloznih materijala; hartija i karton (otpaci i ostaci) za ponovnu preradu	501.5	952.3	189.9	1.3	7.4	563.5	Pulp of wood or of other fibrous cellulosic material; recovered (waste and scrap) paper or paperboard
Hartija i karton; proizvodi od hartijine pulpe, hartije ili kartona	1417.4	2291.7	161.7	21659.3	22772.6	105.1	Paper and paperboard; articles of paper pulp, of paper or of paperboard
Štampane knjige, novine, slike i ostali proizvodi grafičke industrije, rukopisi, kucani tekstovi i planovi	834.7	781.4	93.6	13672.6	13187.9	96.5	Printed books, newspapers, pictures and other products of the printing ind.; manuscripts, typescripts and plans
Svila	0.0	0.0	0.0	17.8	11.5	64.9	Silk
Vuna, fina ili gruba životinjska dlaka, predivo i tkanine od konjske dlake	14.0	63.8	455.6	22.0	12.7	57.8	Wool, fine or coarse animal hair; horsehair yarn and woven fabric
Pamuk	12.9	2.8	21.4	336.9	298.9	88.7	Cotton
Ostala biljna tekstilna vlakna; predivo od hartije i tkanine od prediva od hartije	0.0	0.0	0.0	15.4	12.1	78.3	Other vegetable textile fibres; paper yarn and woven fabrics of paper yarn
Vještački ili sintetički filamenti	0.3	0.0	0.0	404.2	333.6	82.5	Man-made filaments
Vještačka ili sintetička vlakna, sječena	23.6	0.0	0.0	449.8	575.7	128.0	Man-made staple fibres
Vata, filc i netkani materijal; specijalna prediva; kanapi, užad, konopci i kablovi i proizvodi od njih	7.6	2.3	29.9	1682.1	1242.6	73.9	Wadding, felt and nonwovens; special yarns; twine, cordage, ropes and cables and articles thereof
Tepisi i ostali tekstilni podni pokrivači	15.6	11.4	73.5	1769.0	1911.4	108.1	Carpets and other textile floor cover.
Specijalne tkanine; taftovani tekstilni proizv.; čipke; tapiserije; pozamanterija, vez	0.4	5.2		104.2	77.4	74.3	Special woven fabrics; tufted textile fabri-cs; lace; tapestries; trimmings; embroid.
Tekst. tkanine, impregnirane, premazane, prevučene, prekrivene ili laminirane, tekstilni proizvodi pogodni za tehn. svrhe	1.3	0.0	3.3	575.5	386.5	67.1	Impregnated, coated, covered or lami-nated textile fabrics; textile articles of a kind suitable for industrial use
Pleteni ili kukičani materijali	16.9	0.0	0.0	120.4	232.1	192.7	Knitted or crocheted fabrics
Odjeća i pribor za odjeću, pleteni ili kukičani	184.0	161.9	88.0	9348.5	11016.6	117.8	Articles of apparel and clothing accessories, knitted or crocheted
Odjeća i pribor za odjeću, osim pletenih ili kukičanih proizvoda	607.6	346.2	57.0	19983.3	21473.0	107.5	Articles of apparel and clothing accessories, not knitted or crocheted
Ostali gotovi proizvodi od tekstila; setovi, iznošena, dotrajala odjeća i dotrajali proizvodi od tekstila; krpe	74.0	114.9	155.2	3702.5	3953.2	106.8	Other made-up textile articles; sets; worn clothing and worn textile articles; rags
Obuća, kamašne i slični proizvodi; dijelovi tih proizvoda	168.8	327.9	194.3	17933.3	21689.9	120.9	Footwear, gaiters and the like; parts of such articles

SPOLJNA TRGOVINA / EXTERNAL TRADE

Izvoz i uvoz robe, hilj. EUR / Exports and imports of goods, thous EUR

/ nastavak /

/ continued /

	Izvoz / Export			Uvoz / Import			
	I - IX 2010	I - IX 2011	Indeks / Index	I - IX 2010	I - IX 2011	Indeks / Index	
	I - IX 2011 I - IX 2010	I - IX 2011 I - IX 2010	I - IX 2011 I - IX 2010	I - IX 2011 I - IX 2010	I - IX 2011 I - IX 2010	I - IX 2011 I - IX 2010	
Šeširi, kape i ost. pokrivke za glavu i djel.	9.3	7.9	85.3	550.2	351.1	63.8	Headgear and parts thereof
Kišobrani, suncobrani, štapovi, štapovi-stolice, bičevi, korbači i njihovi dijelovi	3.3	6.5	197.7	905.6	971.8	107.3	Umbrellas, sun umbrellas, walking-sticks, seat-sticks, whips, riding-crops and parts thereof
Perje i paperje, preparirano i proizvodi izradjeni od perja i paperja; vještačko cvijeće; proizvodi od ljudske kose	0.0	0.7	2873.3	129.0	119.3	92.5	Prepared feathers and down and arti-cles made of feathers or of down; arti-ficial flowers; articles of human hair
Proizvodi od kamena, gipsa, cementa, betona, azbesta, liskuna ili sličnih mater.	404.4	897.4	221.9	10560.9	9094.5	86.1	Articles of stone, plaster, cement, asbestos, mica or similar materials
Keramički proizvodi	104.9	140.5	133.9	17686.5	20185.1	114.1	Ceramic products
Staklo i proizvodi od stakla	73.2	59.9	81.9	10125.9	10139.6	100.1	Glass and glassware
Prirodni ili kultivisani biseri, drago ili polu-drugo kamenje, plemeniti metali, metali platirani plemenitim metalima, i proizvodi od njih; imitacije nakita; metalni novac	20.1	2810.9		1014.3	2180.3	215.0	Natural or cultured pearls, precious or semi-precious stones, precious metals, metals clad with precious metal, and artic. thereof; imitation jewellery; coin
Gvožđe i čelik	19404.7	31801.5	163.9	21991.3	30745.8	139.8	Iron and steel
Proizvodi od gvožđa i čelika	2417.5	3184.0	131.7	40100.1	38301.3	95.5	Articles of iron or steel
Bakar i proizvodi od bakra	5819.1	6635.0	114.0	1416.2	1667.8	117.8	Copper and articles thereof
Nikl i proizvodi od nikla	0.0	0.0	0.0	252.5	754.7	298.8	Nickel and articles thereof
Aluminijum i proizvodi od aluminijuma	93536.5	144649.4	154.6	15023.8	13866.1	92.3	Aluminium and articles thereof
Olovo i proizvodi od olova	147.2	157.8	107.2	15.5	12.1	78.5	Lead and articles thereof
Cink i proizvodi od cinka	41.0	35.8	87.1	239.0	182.7	76.4	Zinc and articles thereof
Kalaj i proizvodi od kalaja	0.0	51.9	0.0	5.8	9.9	169.3	Tin and articles thereof
Ostali prosti metali; kremeti; proiz. od njih	0.0	0.0	0.0	26.8	12.2	45.6	Other base metals; cermets; art. thereof
Alati, nožarski proizvodi, kašike i viljuške, od prostih metala; njihovi dijelovi od prostih metala	120.3	173.4	144.2	4082.2	4255.3	104.2	Tools, implements, cutlery, spoons and forks, of base metal; parts thereof of base metal
Razni proizvodi od prostih metala	496.9	385.5	77.6	5583.2	6153.0	110.2	Miscellaneous articles of base metal
Reaktori, kotlovi, mašine i mehanički uređaji i njihovi dijelovi	8853.8	11409.0	128.9	94632.3	84984.4	89.8	Reactors, boilers, machinery and mechanical appliances; parts ther.
Električne mašine i oprema i njihovi dije-lovi; aparati za snimanje i reprodukciju zvuka; televizijski aparati za snimanje i reprodukciju slike i zvuk, dijelovi i pribor za te proizvode	2728.7	2313.0	84.8	80017.0	71457.1	89.3	Electrical machinery and equipment and parts thereof; sound recorders and reproducers, television image and sound recorders and reproducers, and parts and accessories of such articles
Šinska vozila i njihovi dijelovi; željeznički i tramvajski kolosječni sklopovi i pribor i njihovi dijelovi, mehanička i elektromehanička signalna oprema za saobraćaj svih vrsta	21.8	10.0	46.1	512.1	824.3	161.0	Railway or tramway locomotives, rolling-stock and parts thereof; railway or tramway track fixtures and fittings and parts thereof; mechanical (including electro-mechanical) traffic signalling equipment of all kinds
Vozila, osim željezničkih ili tramvajskih šinskih vozila i njihovi dijelovi i pribor	2532.1	3030.6	119.7	71317.8	70612.0	99.0	Vehicles other than railway or tramway rolling-stock, and parts and acc. Ther.
Vazduhopl., kosmičke letjelice i njihovi dj.	2666.0	1021.5	38.3	4770.9	603.3	12.6	Aircraft, spacecraft, and parts thereof
Brodovi, čamci i ploveće konstrukcije	1167.4	501.0	42.9	2764.3	4304.8	155.7	Ships, boats and floating structures
Optički, fotografski, kinematografski, mjerni, kontrolni, precizni, medicinski i hirurški instrumenti i aparati; njihovi dijelovi i pribor	291.7	296.5	101.7	13941.8	16079.2	115.3	Optical, photographic, cinematograp-hic, measuring, checking, precision, medical or surgical instruments and apparatus; parts and accessories ther.
Časovnici i njihovi dijelovi	52.0	77.0	147.9	1004.9	1234.3	122.8	Clocks and watches and parts thereof
Muzički instrumenti, dijelovi i pribor ovih proizvoda	10.0	2.4	24.2	345.6	283.4	82.0	Musical instruments; parts and accessories of such articles
Namještaj, posteljina, madraci, nosači madraca, jastuci i slični punjeni proizvodi; lampe i druga svjetleća tijela, na drugom mjestu nepomenuti ili uključeni; osvijetljeni znaci, osvijetljene pločica imenima i slično, montažne zgrade	878.3	505.2	57.5	37359.0	40009.6	107.1	Furniture; bedding, mattresses, mattress supports, cushions and similar stuffed furnishings; lamps and lighting fittings, not elsewhere specified or included; illuminated signs, illuminated name-plates and the like; prefabricated build.
Igračke, rekviziti za društvene igre i sport; njihovi dijelovi i pribor	168.5	180.2	107.0	5913.1	5635.1	95.3	Toys, games and sports requisites; parts and accessories thereof
Razni proizvodi	23.7	26.6	112.3	2336.3	2420.2	103.6	Miscellaneous manufactured articles
Predmeti umjetnosti, kolekcija i starina	343.8	21.1	6.1	176.4	276.6	156.8	Works of art, collectors' pieces and ant.
Nerazvrstani	1737.6	965.1	55.5	1968.1	8305.0	422.0	Other

UNUTRAŠNJA TRGOVINA / DOMESTIC TRADE
PROMET U TRGOVINI NA MALO / TURNOVER IN RETAIL TRADE

Ø 2010 = 100

	Indeks ¹⁾ / Index	PROMET u hilj. EUR / Turnover in thous. EUR
2006	67.2	581942
2007	93.3	808258
2008	108.3	937340
2009	98.5	853203
2010	100.0	866503
Ø I - IX 2010	100.6	72708
Ø I - IX 2011	112.5	87075
2010		
IX	115.3	83298
X	100.5	72694
XI	93.6	67621
XII	100.1	72353
2011		
I	84.0	60670
II	87.7	63351
III	110.3	79676
IV	102.2	73864
V	116.5	84188
VI	127.9	92433
VII	150.8	108953
VIII	163.0	117763
IX	142.2	102777
I – IX 2011/ I – IX 2010	119.8	

¹⁾ Indeks prometa po tekućim cijenama.²⁾ Prethodni podaci¹⁾ Index of turnover at current prices.²⁾ Preliminary data

	PROMET U TRGOVINI NA MALO / <i>TURNOVER IN RETAIL TRADE</i>						
	PROMET u hilj. EUR <i>Turnover in thous. EUR 2011</i>	tekući mjesec na prethodni <i>Current month compared to the previous month</i>		mjesec 2011. na isti mjesec 2010. <i>Month in 2011 compared to the same month 2010</i>		mjesec 2011. <i>na</i> Ø 2010 <i>Month in 2011 to Ø 2010</i>	
		indeks prometa u tekućim cijenama <i>Index of turnover at current prices</i>	indeks prometa u stalnim cijenama <i>Index of turnover at constant prices</i>	indeks prometa u tekućim cijenama <i>Index of turnover at current prices</i>	indeks prometa u stalnim cijenama <i>Index of turnover at constant prices</i>	indeks prometa u tekućim cijenama <i>Index of turnover at current prices</i>	indeks prometa u stalnim cijenama <i>Index of turnover at constant prices</i>
2010							
IX	83298	83.4	83.2	114.5	115.7	115.3	116.5
X	72694	87.3	86.4	102.1	102.8	100.5	101.0
XI	67621	93.0	93.5	106.4	106.6	93.6	94.4
XII	72353	107.0	107.4	92.6	93.0	100.1	101.2
2011							
I	60670	83.8	82.2	115.8	114.0	84.0	83.2
II	63351	104.4	104.0	103.4	100.7	87.7	86.5
III	79676	125.7	123.2	137.7	130.8	110.3	106.6
IV	73864	92.7	92.8	111.6	106.2	102.2	98.9
V	84188	114.0	114.1	115.7	110.0	116.5	112.8
VI	92433	109.8	109.0	114.3	108.1	127.9	123.0
VII	108953	117.9	117.8	136.0	130.3	150.8	144.9
VIII	117763	108.1	107.8	117.9	112.9	163.0	156.2
IX	102777	87.3	87.3	123.4	118.6	142.2	136.4

¹⁾ Prethodni podaci¹⁾ Preliminary data

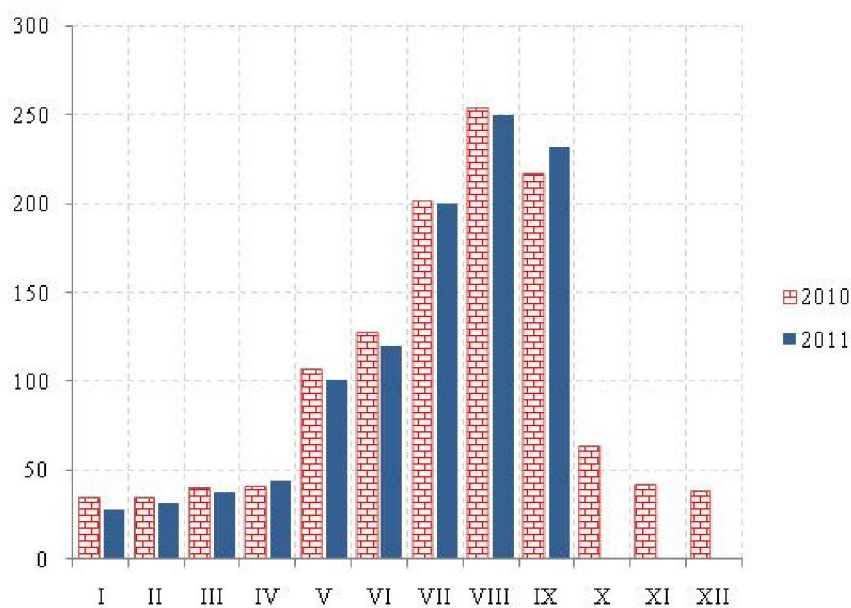
PRODAJA I OTKUP PROIZVODA POLJOPRIVREDE, ŠUMARSTVA I RIBARSTVA
SALE AND BUYING OUT OF PRODUCTS FROM AGRICULTURE, FORESTRY AND FISHERY

U hiljadama EUR			In thousands EUR				
	Indeks <i>Index</i> Ø 2010 =100	Ukupna vrijednost <i>Total value</i>	Poljoprivreda i šumarstvo / <i>Agriculture and forestry</i>				
			žita <i>Cereals</i>	industrijsko bilje <i>Industrial crops</i>	povrće ¹⁾ <i>Vegetables</i>	voće <i>Fruit</i>	grožđe <i>Vine</i>
2006	87.8	15422	11	-	142	1127	1208
2007	94.0	16523	-	831	284	1000	1778
2008	114.9	20198	1	-	491	1749	1897
2009	120.0	21081	51	301	296	1640	1493
2010	100.0	17572	123	238	431	1052	1884
Ø I - IX 2010	99.3	1454	14	26	40	70	208
Ø I - IX 2011	142.1	2080	-	35	121	209	258
2010							
IX	127.0	1860	8	-	67	-	361
X	109.5	1603	-	-	56	111	13
XI	115.2	1686	1	-	17	272	-
XII	81.6	1194	-	-	2	35	-
2011							
I	73.2	1072	-	-	20	-	-
II	115.2	1687	-	255	57	-	-
III	105.0	1537	-	20	69	-	-
IV	98.6	1444	-	9	22	-	-
V	92.3	1351	-	8	12	-	-
VI	141.9	2077	-	6	24	513	-
VII	212.0	3103	-	5	777	383	368
VIII	263.5	3858	-	5	81	855	1154
IX	177.0	2591	-	7	26	131	801
I-IX 2011/ I - IX 2010	143.0	143.0	-	132.4	305.6	296.8	124.2

/nastavak/			/ continued /				
	Poljoprivreda i šumarstvo / <i>Agriculture and forestry</i>						Ribarstvo <i>Fishery</i>
	prerađevine voća i grožđa <i>Products of fruit and vine</i>	Stoka <i>Livestock</i>	živina i jaja <i>Poultry and eggs</i>	mlijeko i mliječni proizvodi <i>Milk and milk products</i>	koža i vuna <i>Leather and wool</i>	ostali proizvodi <i>Other products</i>	riba svježa <i>Fresh fish</i>
2006	100	5437	732	5379	-	969	317
2007	171	5912	800	4640	-	810	297
2008	189	8017	1082	5204	-	1312	256
2009	84	9170	1725	4517	-	582	1222
2010	46	5331	1410	4355	8	1131	1563
Ø I - IX 2010	4	374	114	375	-	106	123
Ø I - IX 2011	16	760	108	396	2	58	117
2010							
IX	-	659	132	381	-	103	149
X	-	727	115	399	8	77	97
XI	10	727	125	316	-	41	177
XII	-	509	145	264	-	58	181
2011							
I	16	471	83	332	-	48	102
II	-	803	107	328	8	53	76
III	3	927	120	271	-	52	75
IV	4	596	161	428	-	57	167
V	7	667	80	413	-	57	107
VI	23	672	106	541	-	78	114
VII	10	790	110	448	3	85	124
VIII	24	939	85	433	7	56	219
IX	54	971	120	374	-	38	69
I - IX 2011/ I - IX 2010	391.7	203.0	94.8	105.7	-	54.9	95.0

¹⁾ Uključeni i krompir i pasulj.¹⁾ includes potatoes and beans.

UGOSTITELJSTVO / CATERING



Promet u ugostiteljstvu / Turnover in catering

Ø 2010 = 100

	Indeks ¹⁾ Index	Promet u hilj. EUR Turnover in thousands EUR
2005	49.4	65552
2006	97.0	128720
2007	102.5	136039
2008	107.6	142833
2009	100	132768
Ø I - IX 2010	117.6	12952
Ø I - IX 2011	116.6	13589
2010		
IX	216.4	23942
X	63.1	6980
XI	42.0	4648
XII	38.1	4212
2011		
I	28.0	3260
II	31.3	3644
III	38.2	4455
IV	44.3	5166
V	101.0	11787
VI	119.7	13947
VII	200.0	23350
VIII	249.2	29035
IX	231.48	26970
I - IX 2011/ I - IX 2010	95.32	95.32

TURIZAM / TOURISM**Dolasci i noćenja turista po zemljama i prema vrsti mjesta*****Tourist arrivals and tourist overnight stays by country and type of resort***

	2010	Kumulativ I - IX		2011			
		2010	2011	VII	VIII	IX	
Dolasci turista							<i>Tourist arrivals</i>
Ukupno	1262985	1203068	1304510	349801	455185	201871	<i>Total</i>
Domaći	175191	160137	156420	31059	51230	21608	<i>Domestic</i>
Strani	1087794	1042931	1148090	318742	403955	180263	<i>Foreigners</i>
Noćenja turista – ukupno	7964893	7729454	8519132	2250493	3556078	1143745	<i>Tourist overnight stays – total</i>
Noćenja domaćih turista	987033	923576	897920	158351	405986	100945	<i>Overnight stays of domestic tourists</i>
Noćenja stranih turista	6977860	6805878	7621212	2092142	3150092	1042800	<i>Overnight stays of foreigners</i>
Albanija	189074	182791	153544	36354	81355	6881	<i>Albania</i>
Austrija	58785	55133	57297	15750	22526	5718	<i>Austria</i>
Belgija	48063	46375	40924	13313	6752	7709	<i>Belgium</i>
Bosna i Hercegovina	731633	712311	728134	229371	268967	112179	<i>Bosnia and Herzegovina</i>
Bugarska	18967	17606	17407	4001	4089	3885	<i>Bulgaria</i>
Češka Republika	165050	164590	170197	57534	71041	17602	<i>Czech Republic</i>
Danska	7606	7017	6295	2221	959	797	<i>Danmark</i>
Finska	6370	6108	10520	5049	1514	1368	<i>Finland</i>
Francuska	233959	231017	146741	18578	41742	27058	<i>France</i>
Grčka	6974	5997	8118	1923	2364	903	<i>Greece</i>
Holandija	21588	19893	30139	6959	8850	4524	<i>Netherlands</i>
Hrvatska	66161	60666	82766	13813	41257	9434	<i>Croatia</i>
Italija	199617	191247	133350	20027	74291	12002	<i>Italy</i>
Mađarska	183031	181822	97485	27325	32660	27248	<i>Hungary</i>
Makedonija	163961	158671	135793	32329	45481	32985	<i>Macedonia</i>
Norveška	55550	50186	63925	19082	20942	7165	<i>Norway</i>
Njemačka	151843	143958	172226	40600	61712	27803	<i>Germany</i>
Poljska	84053	83468	213608	41521	76228	61193	<i>Poland</i>
Rumunija	84838	81396	137622	38064	66204	21185	<i>Romania</i>
Rusija	1217978	1193294	1760179	417710	723137	269358	<i>Russia</i>
Slovačka	52353	52068	70780	27703	30690	3865	<i>Slovakia</i>
Slovenija	106016	102462	132353	81235	25237	10517	<i>Slovenia</i>
Srbija ¹⁾	2097051	2061144	2076933	591688	992007	194873	<i>Serbia¹⁾</i>
Švajcarska	29117	27288	32872	13410	12343	3017	<i>Switzerland</i>
Švedska	50542	48948	49236	14247	13541	7174	<i>Sweden</i>
Ukrajina	167874	166360	268708	36209	111416	79339	<i>Ukraine</i>
Velika Britanija	115428	107214	129289	22135	50344	26566	<i>Great Britain</i>
Ostale evropske zemlje	568629	560392	568949	237389	207494	46813	<i>Other European countries</i>
Izrael	19729	19030	19313	5758	5611	3062	<i>Israel</i>
Kanada	7231	6460	8074	2266	2207	972	<i>Canada</i>
SAD	33820	30488	42697	8499	23183	3209	<i>USA</i>
Ostale vanjevropske zemlje	35149	30478	52543	10349	23948	6396	<i>Other non-European countries</i>
Noćenja po vrstama mjesta – ukupno	7964893	7729454	8519132	2250493	3556078	1143745	<i>Overnight stays by type of tourist resorts – total</i>
Glavni administrativni centar	112569	86340	76655	10787	7679	10093	<i>Main administrative center</i>
Primorska	7643320	7463588	8287376	2214345	3516201	1114124	<i>Coastal</i>
Planinska	123151	106138	97649	18325	23725	13733	<i>Mountain</i>
Ostala turistička mjesta	83896	71870	56177	6889	8281	5633	<i>Other tourist resorts</i>
Ostala mjesta	1957	1518	1275	147	192	162	<i>Other places</i>
Primorska mjesta							<i>Coastal resorts</i>
Bar	1093676	1054226	1074330	342032	462030	129724	<i>Bar</i>
Budva	3438875	3380008	3848084	867266	1601592	680002	<i>Budva</i>
Kotor	255185	250420	281531	57482	175505	20075	<i>Kotor</i>
Tivat	268625	251486	337618	98195	105065	26854	<i>Tivat</i>
Ulcinj	790309	786531	873296	293502	413974	43740	<i>Ulcinj</i>
Herceg Novi	1796650	1740718	1872517	555868	758035	213729	<i>Herceg Novi</i>

TURIZAM / TOURISM
DOLASCI I NOĆENJA GOSTIJU PO VRSTAMA TURISTIČKIH MJESTA
TOURIST ARRIVALS AND TOURIST OVERNIGHT STAYS BY TYPE OF PLACE

	Dolasci / Arrivals					Noćenja / Nights				
	glavni grad <i>Capital</i>	primorska mjest <i>Coastal resorts</i>	planinska mjest <i>Mountain resorts</i>	ostala turistička mjest <i>Other tourist resorts</i>	ostala mjest <i>Other places</i>	glavni grad <i>Capital</i>	primorska mjest <i>Coastal resorts</i>	planinska mjest <i>Mountain resorts</i>	ostala turistička mjest <i>Other tourist resorts</i>	ostala mjest <i>Other places</i>
2005	29819	747734	19185	23599	120	53886	5022260	53577	82003	121
2006	39295	859904	26362	28144	223	74169	5691770	68424	101677	230
2007	45588	1010742	39158	37642	302	104986	6961444	105892	121871	337
2008	50393	1058825	38304	40229	365	111271	7459794	102560	120682	434
2009	49166	1081805	41161	34623	939	103464	7244830	99500	102208	2004
Ø I - IX 2010	4545	121402	4603	2849	74	9593	829287	11793	7985	169
Ø I - IX 2011	4433	133409	4872	2153	79	8517	920819	10849	6242	141
2010										
IX	4974	159273	7231	4065	93	11972	955659	16003	7855	224
X	4531	19915	1948	2222	93	9943	102556	6375	5174	119
XI	4846	9783	998	1425	64	9019	48715	5326	3535	183
XII	3662	6958	2172	1252	48	6882	28846	5312	3317	137
2011										
I	3243	6945	3638	1532	16	7772	30965	10795	6440	34
II	3191	8140	3279	1181	49	6096	39482	6573	3491	109
III	3914	10337	2432	1800	33	7863	50513	5634	6251	75
IV	4278	24876	1292	1842	92	8036	101432	2180	5857	216
V	4959	67483	3166	2254	105	8938	350667	4998	6720	163
VI	5246	123988	5892	2307	140	9391	869674	11686	6615	177
VII	5177	334198	7561	2786	79	10787	2214345	18325	6889	147
VIII	4518	437546	9786	3209	126	7679	3516201	23725	8281	192
IX	5368	187169	6799	2466	69	10093	1114124	13733	5633	162
I - IX 2011/ I - IX 2010	97.5	109.9	105.8	75.6	106.7	88.8	111.0	92.0	78.2	83.4

DOLASCI I NOĆENJA TURISTA / TOURIST ARRIVALS AND TOURIST OVERNIGHT STAYS

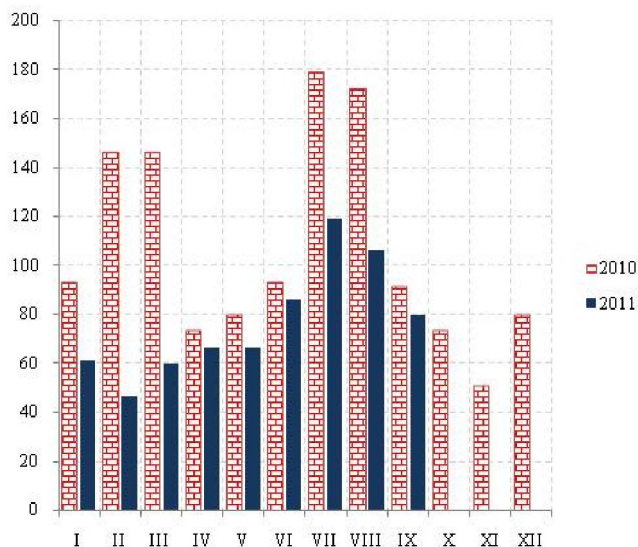
	Dolasci/Arrivals			Noćenja / Nights		
	ukupno / Total	domaći / Domestic	strani / Foreign	ukupno / Total	domaći / Domestic	strani / Foreign
2005	820457	548452	272005	5211847	3628337	1583510
2006	953928	576130	377798	5936270	3740179	2196091
2007	1133432	149294	984138	7294530	851045	6443485
2008	1188116	156904	1031212	7794741	828462	6966279
2009	1207694	163680	1044014	7552006	856332	6695674
Ø I - IX 2010	133674	17793	115881	858828	102619	756209
Ø I - IX 2011	144945	17380	127565	946570	99768	846801
2010						
IX	175636	23242	152394	991713	106856	884857
X	28709	6451	22258	124167	30615	93552
XI	17116	3748	13368	66778	17671	49107
XII	14092	4855	9237	44494	15171	29323
2011						
I	15374	5830	9544	56006	20803	35203
II	15840	4334	11506	55751	15988	39763
III	18516	5292	13224	70336	22362	47974
IV	32380	5617	26763	117721	21592	96129
V	77967	15282	62685	371486	67696	303790
VI	137576	16168	121408	897516	84197	813319
VII	349801	31059	318742	2250493	158351	2092142
VIII	455185	51230	403955	3556078	405986	3150092
IX	201871	21608	180263	1143745	100945	1042800
I - IX 2011/ I - IX 2010	108.4	97.7	110.1	110.2	97.2	112.0

SAOBRAĆAJ, SKLADIŠTENJE I VEZE
TRANSPORT, STORAGE AND COMMUNICATIONS

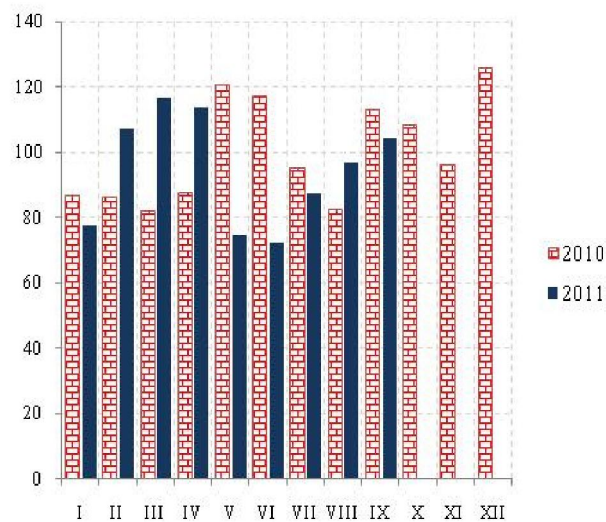
Željeznički saobraćaj / Railway transport

Ø 2010 = 100

Putnički / Passengers



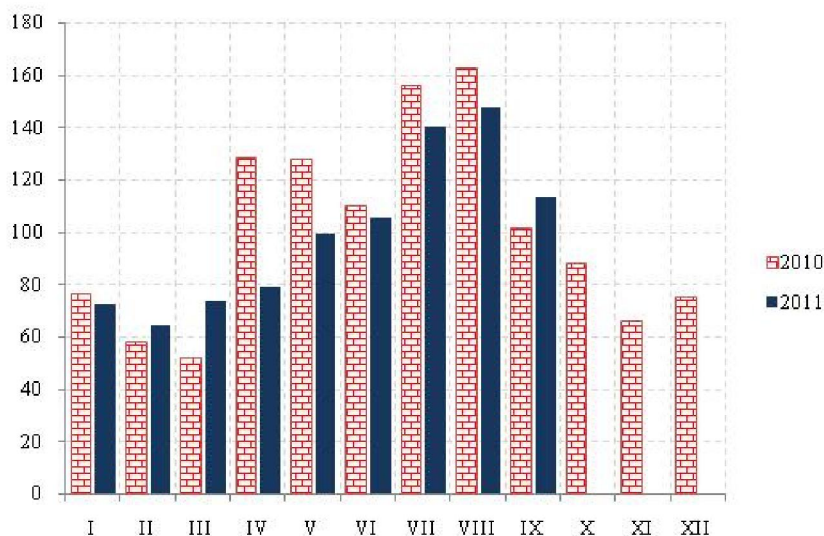
Robni / Goods



	ŽELJEZNIČKI SAOBRAĆAJ / RAILWAY TRANSPORT					
	Putnički / Passenger			Robni / Goods		
	indeks Index	putnici u 000 Passengers, thousands	putnički km u 000 Passenger kilometres in thousands	Indeks Index	prevoz robe u 000 t Goods in thousands tonnes	tonski km u 000 Tonne-kilometres in thousands
2006	145.0	1067	131500	120.9	2494	182163
2007	121.3	999	110000	122.7	1761	184957
2008	137.9	1031	125000	122.0	1740	183854
2009	109.4	852	99200	66.7	854	100546
2010	100.0	755	90660	100.0	1213	150699
Ø I - IX 2010	110.8	68	8373	96.7	97	12140
Ø I - IX 2011	76.6	60	5789	94.4	91	11861
2010						
IX	90.8	70	6860	113.0	116	14187
X	72.8	53	5500	108.4	111	13610
XI	50.3	40	3800	95.9	111	12039
XII	79.4	50	6000	125.7	119	15789
2011						
I	60.8	40	4600	77.4	88	9720
II	46.3	38	3500	106.9	100	13430
III	59.6	45	4500	116.3	106	14606
IV	66.2	45	5000	113.9	101	14306
V	66.2	58	5000	74.5	81	9360
VI	86.0	70	6500	72.5	76	9103
VII	119.1	95	9000	87.6	81	11003
VIII	105.9	85	8000	96.7	91	12142
IX	79.4	67	6000	104.2	99	13080
I - IX 2011 / I - IX 2010	69.1	88.7	69.1	97.7	94.4	97.7

SAOBRAĆAJ, SKLADIŠTENJE I VEZE
TRANSPORT, STORAGE AND COMMUNICATIONS

Drumski saobraćaj - Putnički / Road transport - passengers



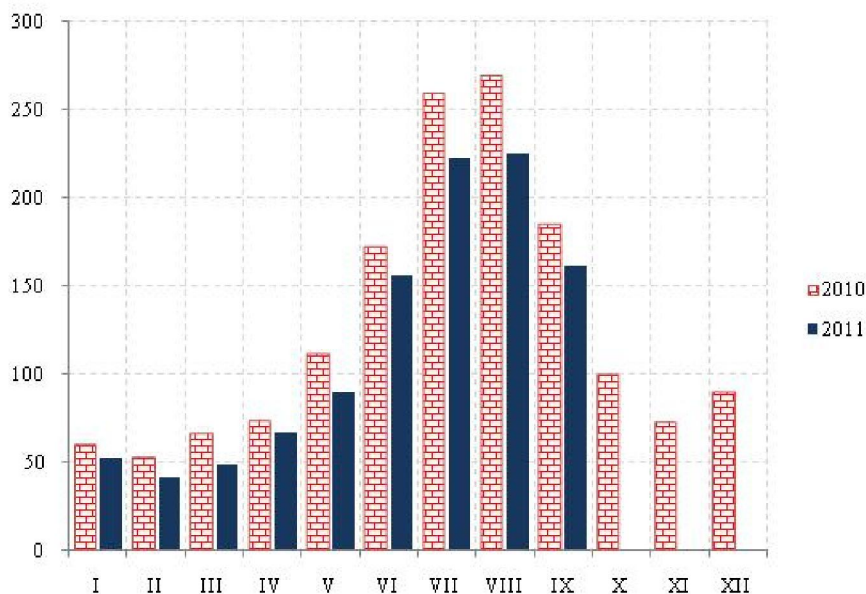
Ø 2010 = 100

	DRUMSKI SAOBRAĆAJ / ROAD TRANSPORT							
	PUTNIČKI / PASSENGERS				ROBNI / GOODS			
	indeks Index	putnici u 000 Passengers, thous.	putnički km u 000 Passenger kilometres in thous.	autobuski km u 000 Bus kilometres in thous	indeks Index	roba u 000 tona Goods in thousands tonnes	tonski km u 000 Tonne- kilometres in thous.	kamionski km u 000 Truck kilometres in thous.
2006	141.9	4825	114695	16809	43.7	1961	72724	15167
2007	174.7	5738	141247	17630	55.1	2131	91786	16269
2008	152.7	5503	123421	18068	82.3	2468	137058	14857
2009	126.1	5536	101928	16272	107.6	1724	179288	11667
2010	100.0	6209	80833	20517	100.0	1839	166564	12411
Ø I - IX 2010	107.9	518	7270	1762	88.1	157	12233	1121
Ø I - IX 2011	99.4	523	6695	1549	60.0	105	8282	1104
2010								
IX	101.3	593	6822	1931	70.9	140	9842	1044
X	87.7	520	5906	1698	70.5	132	9787	802
XI	66.1	534	4455	1460	279.0	171	38731	838
XII	74.9	493	5044	1502	57.0	119	7951	684
2011								
I	72.2	352	4864	1398	43.1	121	5980	620
II	64.3	410	4329	1364	57.9	126	8038	732
III	73.3	423	4940	1400	52.8	78	7327	677
IV	79.1	471	5331	1421	49.6	96	6879	488
V	99.1	544	6673	1594	58.6	101	8129	1812
VI	105.5	547	7107	1568	66.3	133	9212	820
VII	140.2	634	9444	1663	72.8	110	10100	1253*
VIII	147.8	701	9953	1813	71.3	75	9900	1269
IX	113.1	622	7617	1718	64.6	109	8973	1161
I – IX 2011/ I – IX 2010	92.1	100.9	92.1	87.9	67.7	67.0	67.7	87.6

SAOBRAĆAJ, SKLADIŠTENJE I VEZE
TRANSPORT, STORAGE AND COMMUNICATIONS

Ø 2010 = 100

Vazdušni saobraćaj - putnički / Air transport - passengers



	GRADSKI SAOBRAĆAJ LOCAL TRANSPORT		VAZDUŠNI SAOBRAĆAJ, PROMET NA AERODROMIMA AIR TRANSPORT, TRAFFIC AT AIRPORTS		
	indeks Index	prevezeno putnika u 000 Passengers in thousands	PUTNIČKI / PASSENGERS		ROBNI / GOODS
			indeks Index	prevoz putnika Transport of passengers	prevoz robe u tonama Transport of goods in tonnes
2006	269.7	1591	69.2	833715	1067
2007	252.7	1491	85.0	1024491	1320
2008	262.2	1547	92.0	1109095	1490
2009	92.2	544	79.3	956405	1478
2010	100.0	590	100.0	1205536	2159
Ø I - IX 2010	85.7	42	110.2	110712	180
Ø I - IX 2011	114.3	56	118.8	119309	97
2010					
IX	130.6	64	146.5	147178	59
X	140.8	69	78.9	79266	62
XI	149.0	73	57.8	58106	77
XII	146.9	72	71.4	71755	397
2011					
I	77.5	38	52.8	53001	44
II	134.7	66	42.0	42174	324
III	140.8	69	49.3	49514	68
IV	140.8	69	67.5	67842	64
V	140.8	69	89.9	90308	76
VI	83.7	41	156.7	157444	84
VII	81.6	40	223.0	224056	72
VIII	87.7	43	225.8	226862	66
IX	142.9	70	161.8	162577	75
I – IX 2011/ I – IX 2010	134.3	134.3	107.8	107.8	53.8

SAOBRAĆAJ, SKLADIŠTENJE I VEZE / TRANSPORT, STORAGE AND COMMUNICATIONS
POMORSKI SAOBRAĆAJ / MARINE TRANSPORT

	Prevoz robe / Transport of goods			Promet u lukama (u tonama) / Turnover in harbours (tonnes)				
	Indeks Index	u 000 t In thous. tonnes	tonske milje u hilj.. Tonne milles in thousands	Indeks Index	ukupno Total	unutrašnji romet Internal turnover	izvoz ¹⁾ Export	uvoz ²⁾ Import
2006	159.0	818	380	113.1	1988204	116	1027208	941905
2007	170.7	785	408	117.8	2071310	1825	791509	1280327
2008	147.3	595	352	110.8	1949409	8350	683990	1219948
2009	114.2	541	273	84.2	1481069	-	613696	829491
2010	100.0	441	239	100.0	1758692	-	835499	798668
Ø I - IX 2010	65.2	38	24	101.6	148839	-	67834	67610
Ø I - IX 2011	48.9	25	18	99.7	146174	-	73364	70000
2010								
IX	125.0	42	25	100.6	147495	-	47280	97623
X	-	29	...	69.8	102351	-	52928	49086
XI	60.0	37	12	116.8	171166	-	113619	53911
XII	60.0	30	12	99.4	145626	-	58442	87184
2011								
I	40.2	23	8	55.2	80852	-	42735	38117
II	29.2	36	6	67.2	98453	-	43911	54532
III	60.0	30	12	79.6	116690	-	64758	51932
IV	81.5	30	7	122.0	178728	-	97665	77427
V	50.3	25	10	137.1	200920	-	137879	59784
VI	135.7	23	27	116.4	196703	-	116818	64069
VII	226.1	20	45	115.6	169476	-	94100	72851
VIII	160.8	15	32	109.6	160595	-	21238	139357
IX	46.2	22	17	77.2	113145	-	41169	71934
I - IX 2011/ I - IX 2010	75.0	65.8	75.0	98.2	98.2	-	108.2	103.5

¹⁾Tranzit utovar prikazan kod izvoza ²⁾Tranzit istovar prikazan kod uvoza / ¹⁾Transit loading presented in export. ²⁾Transit loading presented in import.

P T T SAOBRAĆAJ / POSTAL, TELEGRAPH AND TELEPHONE (PTT) COMMUNICATIONS

	Poštanske usluge / Postal services		Telegrafske usluge / Telegraph services		Telefonske usluge / Telephone services	
	pisma u 000 komada <i>Lletters in thousands pcs.</i>	paketi u 000 komada <i>Packages in thousands pcs.</i>	uputnice u 000 komada <i>Postal orders in thousands pcs.</i>	telegr. u 000 komada <i>Ttelegraphs in thousands pcs.</i>	fiksna telefonija <i>Fixed telephony</i>	mobilna telefonija <i>Mobile telephony</i>
					minuti u 000 <i>Minutes in thous.</i>	minuti u 000 <i>Minutes in thous.</i>
2006	17396	30	45	581	862596	488802
2007	18291	23	44	589	864471	660168
2008	20521	25	37	507	650567	1027704
2009	21564	25	34	476	513213	1166274
2010	20763	25	36	419	380585	1262626
Ø I - IX 2010	1725	2	3	36	31773	104704
Ø I - IX 2011	1728	2	4	31	35115	149011
2010						
IX	1669	2	3	32	31615	80698
X	1665	2	3	30	31546	99671
XI	1659	2	5	35	30564	108205
XII	1910	3	4	33	32485	112414
2011						
I	1738	2	3	33	29127	113633
II	1789	2	3	36	28557	111120
III	1810	3	4	29	31333	119423
IV	1790	2	4	26	36345	151318
V	1720	2	4	33	37259	143581
VI	1641	2	4	37	38023	166319
VII	1698	3	5	28	39901	185191
VIII	1649	2	4	26	39367	187402
IX	1718	2	4	32	36121	163111
I - IX 2011/ I - IX 2010	100.2	111.1	145.8	87.2	110.5	142.3

DEPOZITI STANOVNIŠTVA / *DEPOSITS BY HOUSEHOLDS*u mil. EUR, stanje na kraju perioda¹⁾balance at end-periods, EUR mill¹⁾

	Depoziti po viđenju <i>Demand deposits</i>	Oročeni depoziti / <i>Time deposits</i>					Ukupno <i>Total</i>
		do 3 mjeseca <i>Up to 3 months</i>	od 3 mjeseca do godinu dana <i>From 3 months to 1 years</i>	od 1 do 3 godine <i>From 1 to 3 years</i>	preko 3 godine <i>Over 3 years</i>	ukupno <i>Total</i>	
2008							
I	469.6	136.1	294.1	134.3	8.3	572.8	1.042.4
II	465.4	146.0	332.2	106.0	9.2	593.4	1.058.8
III	462.2	140.8	307.0	141.0	10.0	598.8	1.061.0
IV	464.2	150.3	309.9	154.0	10.9	625.1	1.089.3
V	438.7	168.5	313.6	151.6	10.4	644.1	1.083.0
VI	410.2	163.1	330.1	146.6	21.5	664.8	1.075.4
VII	416.9	154.9	330.2	175.3	33.6	694.0	1.110.9
VIII	418.7	168.7	352.2	159.1	24.4	704.4	1.123.1
IX	410.6	166.4	359.6	153.8	23.7	703.5	1.114.1
X	331.5	121.2	337.5	157.2	34.7	650.6	982.1
XI	298.9	87.7	259.5	228.3	23.4	599.0	898.1
XII	302.5	91.0	224.5	221.8	16.5	553.8	856.5
2009							
I	288.0	83.7	233.2	200.4	16.7	534.0	822.3
II	270.8	76.8	237.0	192.0	16.3	522.1	792.8
III	281.5	127.7	249.2	107.6	14.5	499.0	780.6
IV	256.6	135.1	264.7	92.0	14.0	505.8	762.4
V	248.7	140.9	254.2	89.2	14.0	498.3	747.0
VI	248.1	153.6	247.4	86.4	14.8	502.2	750.3
VII	258.0	159.6	245.4	87.3	13.6	506.0	764.0
VIII	257.6	158.8	248.9	88.9	13.0	509.5	767.1
IX	259.1	157.1	255.4	85.3	13.0	510.8	769.9
X	267.0	168.1	278.7	85.5	14.3	546.6	813.5
X	255.5	176.2	284.6	85.6	14.6	561.0	816.5
XI	266.9	164.0	306.3	92.4	14.5	577.3	844.2
XII	288.0	83.7	233.2	200.4	16.7	534.0	822.3
2010							
I	260.2	163.3	295.6	93.5	15.4	567.8	828.0
II	263.6	162.3	306.1	93.5	13.7	575.6	839.2
III	272.9	165.8	306.4	90.4	14.3	576.9	849.7
IV	278.4	162.7	307.0	91.6	14.2	575.4	853.9
V	292.0	159.9	305.9	94.2	14.3	574.3	866.3
VI	287.6	163.3	303.4	99.4	14.6	580.7	868.3
VII	309.7	170.1	302.4	101.0	14.8	588.3	898.0
VIII	298.3	174.4	311.0	105.9	15.7	607.0	905.3
XI	301.1	171.5	317.3	105.8	16.7	611.3	912.4
XI	300.6	149.5	347.6	109.1	17.1	623.2	923.8
XII	302.8	145.8	364.5	108.0	18.7	637.0	939.8
	314.6	135.3	371.1	112.1	18.7	637.1	951.7
2011							
I	304.5	140.7	375.3	104.6	18.7	639.3	943.8
II	304.0	144.1	374.3	105.5	19.9	643.8	947.8
III	303.6	144.6	370.7	113.7	21.3	650.3	953.9
IV	319.0	146.2	369.2	115.3	21.6	652.2	971.1
V	319.6	143.7	369.7	121.1	22.3	656.8	976.4
VI	318.4	146.8	364.6	127.9	24.5	663.9	982.3

IZVOR: Centralna banka Crne Gore

¹⁾ Stanje na 31.XII

SOURCE: Central Bank of Montenegro

¹⁾ Balance on 31 December

PLATNI BILANS CRNE GORE ¹⁾ u hilj.EUR/ *BALANCE OF PAYMENTS OF MONTENEGRO* ¹⁾ EUR thous

Kvartali Quarters	A Ukupno Total	TEKUĆI RAČUN / Current account							
		1 (1.1 - 1.2) Roba / Goods		2 (2.1 - 2.2) Usluge / Services		3 (3.1 - 3.2) Dohoci / Income		4 (4.1 - 4.2) Tekući transferi Current transfers	
		izvoz Export	uvoz Import	prihodi Revenues	rashodi Expenditures	prihodi Revenues	rashodi Expenditures	prihodi Revenues	rashodi Expenditures
	(1+2+3+4)	1.1	1.2	2.1	2.2	3.1	3.2	4.1	4.2
2009*	-896.329	296.313	1.668.012	680.487	295.869	162.770	157.395	117.681	32.304
I	-257.978	76.509	355.464	55.170	64.194	40.917	26.731	26.402	10.587
II	-293.521	57.904	418.457	125.505	75.806	40.985	45.810	28.183	6.025
III	-16.986	80.020	443.481	428.541	80.395	38.640	62.301	29.517	7.528
IV	-327.844	81.880	450.611	71.271	75.474	42.229	22.553	33.580	8.165
2010*	-779.300	356.626	1.674.008	747.024	301.611	165.802	187.540	146.316	31.908
I	-243.158	60.339	314.644	50.475	67.688	38.431	33.476	30.384	6.978
II	-267.785	94.843	448.694	138.331	78.184	39.953	42.873	36.214	7.374
III	10.121	93.832	475.630	472.367	81.651	42.082	68.295	35.789	8.375
IV	-278.478	107.612	435.040	85.851	74.088	45.336	42.897	43.929	9.181
2011 ²⁾	-446.997	225.613	848.038	220.502	121.457	89.686	67.503	73.208	19.008
I	-191.920	115.682	355.698	61.289	58.307	44.036	24.509	33.888	8.303
II	-255.077	109.931	492.341	159.213	63.150	45.650	42.995	39.320	10.705

/nastavak /

/ continued /

Nastavak /		KAPITALNI I FINANSIJSKI RAČUN / CAPITAL AND FINANCIAL ACCAUNT					Neto greške i omaške Net errors and omissions
Kvartali Quarters	B Ukupno Total	račun kapitala Capital account	2 (2.1+2.2+2.3+2.4) Finansijski račun / Financial account			promjena rezervi CBCG Change in CBM reserves	
			direktne investicije-neto Direct investments - net	porfolio investicije- neto Portfolio investments - net	ostale investicije- neto Other investments - net		
	(1+2)	1	2.1	2.2	2.3	2.5	(A+B)
2009*	528.028	1.959	1.066.497	-41.851	-413.898	-84.679	368.301
I	214.032	-3	90.273	-10.469	72.464	61.768	43.946
II	179.927	1.995	241.613	-18.651	-57.929	12.899	113.593
III	-171.068	-39	592.297	-3.929	-551.752	-207.644	188.053
IV	305.136	6	142.315	-8.802	123.319	48.298	22.708
2010*	370.945	-495	552.107	188.208	-352.291	-16.585	408.355
I	195.813	-319	138.228	-1.731	4.839	54.796	47.344
II	131.578	46	185.028	1.114	-95.297	40.687	136.207
III	-245.651	-52	89.288	188.216	-354.379	-168.725	235.530
IV	289.204	-170	139.563	609	92.546	56.657	-10.726
2011 ²⁾	293.698	-159	178.800	175.602	-65.617	5.071	153.300
I	157.416	-136	114.211	14.079	-78.186	107.447	34.505
II	136.282	-24	64.589	161.523	12.569	-102.375	118.795

1) IZVOR: Centralna banka Crne Gore

1) SOURCE: Central Bank of Montenegro

2) Prethodni podaci

2) Preliminary data

METODOLOŠKA OBJAŠNJENJA**STANOVNIŠTVO****Izvori podataka**

Podaci o rođenim i umrlim licima prikupljaju se iz matičnih registara rođenih i umrlih za koje je nadležno Ministarstvo unutrašnjih poslova i javne uprave.

Podaci o zaključenim brakovima prikupljaju se od nadležnih organa lokalne uprave.

Podaci o razvedenim brakovima prikupljaju se od sudova nadležnih za razvod braka.

Podaci o unutrašnjim migracijama prikupljaju se iz registara za koje je nadležno Ministarstvo unutrašnjih poslova i javne uprave.

Obuhvatnost– Podaci o stanovništvu obuhvataju broj rođenih, umrlih i vjenčanih, razvedenih i preseljenih lica registrovanih u nadležnim organima.

ZAPOSLENOST I ZARADE**Zaposlenost**

Podaci o godišnjem i mjesečnom broju zaposlenih dobijaju se na osnovu evidencija koje su regulisane Zakonom o evidencijama u oblasti rada i zapošljavanja ("Sl.list RCG", br.69/03), a vode se u Centralnom registru Poreske uprave (CRPO), koje Zavod za statistiku redovno preuzima od istih.

Obuhvatnost

Ovim evidencijama obuhvaćeni su zaposleni u preduzećima, ustanovama i organizacijama svih oblika svojine kao i strani državljani zaposleni u našoj zemlji.

Ne smatraju se zaposlenima lica koja rade po ugovoru o djelu ili po ugovoru o obavljanju privremenih i povremenih poslova.

Podaci o nezaposlenim licima obuhvataju sva lica koja su kod Zavoda za zapošljavanje registrovana kao nezaposlena

Definicije

Pod pojmom zaposleni podrazumijevaju se sva lica koja imaju zasnovan radni odnos sa preduzećem, ustanovom ili organizacijom ili individualnim poslodavcem bez obzira da li su radni odnos zasnovali na neodređeno ili određeno vrijeme i da li rade puno ili kraće od punog radnog vremena. Od 1.januara 2009.godine u ukupan broj zaposlenih u Crnoj Gori ulaze i zaposleni stranci na osnovu čl.1 Zakona o zapošljavanju i radu stranaca ("Sl.list CG", br. 22 od 02.04.2008.godine), a stupio na snagu 01.januara 2009.godine „stranac se može zaposliti, odnosno, raditi u Crnoj Gori pod uslovima utvđenim zakonom, kolektivnim ugovorom, potvrđenim i objavljenim međunarodnim ugovorom i opšte prihvaćenim pravilima međunarodnog prava"

METHODOLOGICAL EXPLANATIONS**POPULATION**

Data sources – Data on born and dead persons are collected from the Registry Offices of born and dead which is under the jurisdiction of the Ministry of Internal Affairs and Public Administration

Data on marriages are collected by the authorities of local governments.

Information on divorces are collected from the competent courts for divorce.

Data on internal migrations are collected from the Register which is under the jurisdiction of Ministry of Internal Affairs and Public Administration.

Coverage and definitions – Data on population include the number of births, deaths and marriages, divorced and resettled persons registered in the competent authorities

EMPLOYMENT AND EARNINGS**Employment**

The data on annual and monthly number of employees are received on the basis of the records regulated by the Law on Records in the Area of Labour and Employment (Official Gazette of the Republic of Montenegro 69/03), kept by the Central Register of Tax Administration (CRTA), and regularly used by the Statistical Office of Montenegro.

The above mentioned records comprise employees in enterprises, institutions and organization of all types of ownership, as well as foreign citizens employed in our country.

Persons engaged on the basis of temporary contract or contract for performing temporary and occasional activities are not considered as employees.

The data on unemployed persons include the persons registered at the Employment Agency of Montenegro under the unemployed category.

Coverage**Definitions**

The term "employees" refers to all persons being employed in enterprises, institutions, organizations or by self-employed individuals no matter whether their employment status is based on a permanent or temporary contract and whether they work on a full-time or part-time basis. From the 1st January 2009 in the total number of employees enter also employed foreigners according to the article 1 of the Law on Employment and work of the foreigners (Official Gazette of Montenegro, number 22 from 2nd April, 2008), which took effect on the 1st January 2009 "strangers can be employed, i.e., work in Montenegro under condition established in Law, collective contract, confirmed and published international contract and generally accepted regulation of international Law"

Nezaposleni**Definicije**

Podaci o broju nezaposlenih lica preuzeti su od Zavoda za zapošljavanje i obuhvataju samo lica koja su registrovana kod ove službe.

U grupi „lica koja traže zaposlenje“ obuhvaćena su lica shodno članu 4 Zakona o zapošljavanju, stav prvi: „nezaposlenim licem, u smislu ovoga Zakona, smatra se lice od 15-65.godina života koje se nalazi na evidenciji Zavoda za zapošljavanje Crne Gore (u daljem tekstu: Zavod) i aktivno traži zaposlenje, kao i strani državljanin ili lice bez državljanstva, koji ima odobrenje za stalno nastanjenje i odobrenje za zasnivanje radnog odnosa u Crnoj Gori”.

U grupi „lica koja primaju novčanu naknadu“ obuhvaćena su lica koja shodno članu 48 Zakona o zapošljavanju Crne Gore, stav prvi: „pravo na novčanu naknadu ostvaruje osiguranik kojem je u smislu Zakona o radu prestao radni odnos bez njegovog zahtjeva, saglasnosti ili krivice, a koji je bio u radnom odnosu kod jednog ili više poslodavaca sa punim radnim vremenom najmanje 9 mjeseci neprekidno ili 12 mjeseci sa prekidima u posljednjih 18 mjeseci (u daljem tekstu: staž osiguranja), ako se prijavi Zavodu u roku od 30 dana od dana prestanka radnog odnosa“.

U grupi „nezaposlene osobe” koje su se tokom izvještajnog mjeseca prijavile na evidenciju Zavoda za zapošljavanje Crne Gore obuhvataju grupe novoprijavljenih lica”:

- Prvi put, nema zapošljavanja – odnosi se na lica koja su se prvi put prijavila na evidenciju Zavoda, a do tada nijesu bila zapošljavana;
- Prvi put, ima zapošljavanja – lica koja su se prvi put prijavila na evidenciju Zavoda, a do tada nijesu bila zapošljavana;
- Nije prvi put, nema zapošljavanja- lica koja su se više puta prijavljivala na evidenciju Zavoda, a nisu bila zapošljavana;
- Nije prvi put, ima zapošljavanja – lica koja su se više puta prijavljivala na evidenciju Zavoda, a bila su zapošljavana;

U grupi „prestanak vođenja evidencije“ obuhvaćena su lica koja shodno članu 86 Zakona o zapošljavanju, stav prvi: „evidencija o nezaposlenom licu prestaje da se vodi ako:

1. zaključi ugovor o radu sa punim radnim vremenom; se odjavi iz evidencije nezaposlenih lica;
2. odbije uključivanje ili ne izvršava obaveze utvrđene ugovorom o uključivanju u program aktivne politike zapošljavanja;
3. postane vlasnik ili većinski suvlasnik preduzeća;
4. postane preduzetnik;

Unemployed**Definitions**

Data about unemployed persons are taken from the Employment Agency and include only persons registered at the Agency.

The group “persons looking for employment” includes persons defined according to the article 4, par. 1 of the Law on Employment as: “an unemployed person, according to this Law, is a person aged 15-65 which is in the records of the Employment Agency of Montenegro (furthermore: EAM) and is actively looking for employment, as well as a foreigner or a person without citizenship, who has the permission for permanent residence as well as the permission for starting work in Montenegro”.

The group “persons receiving social benefits” includes persons who, according to the article 4, par. 1 of the Law on Employment: “receive the monetary benefit for stopped working without person’s request, compliance or guilt, and who was working for one or more employers the full working time for at least 9 months without a break or 12 months with breaks in the last 18 months (furthermore: duration of insurance), if he/she reports to the EAM within 30 days of stopping to work.

The group “unemployed persons” who reported themselves to the records of the Employment Agency of Montenegro within the reporting month includes the groups of newly reported persons:

- First time, no employment – refers to persons who are reported for the first time in the records of EAM, and were not previously employed;
- First time, with employment – persons who are reported for the first time in the records of the EAM, and used to be employed;
- Not-first time, no employment – persons who reported to the records of EAM several times, and were not employed;
- Not-first time, no employment persons who reported to the records of EAM several times, and used to be employed;

The group “stopped keeping records” includes persons who, according to the article 86, refer to the par. 1 of the Law on Employment: “records on the unemployed person is stopped to be kept if:

1. the person signs contract on work with full working time; is signed off from the records of the unemployed persons;
2. refuses inclusion or does not perform obligations specified in the agreement on the inclusion in the programme of active employment policy;
3. becomes the owner or major co-owner of an enterprise;
4. becomes an entrepreneur;

5. odbije odgovarajuće zaposlenje;
6. nije dalo tačne podatke o ispunjavanju uslova za sticanje statusa nezaposlenog lica;
7. navrš 65 godina života;
8. ostvari pravo na starosnu ili invalidsku penziju;
9. ostane potpuno nâsposan za rad;
10. ode na izdržavanje kazne zatvora u trajanju dužem od šest mjeseci;
11. aktivno ne traži zaposlenje;
12. je radno angažovano suprotno propisima o radnim odnosima („rad na crno“);
13. postane osiguranik – zemljoradnik, u skladu sa Zakonom o penzijskom i invalidskom osiguranju“.

ZARADE

Izvori podataka

Podaci o prosječnim zaradama prikazuju zarade isplaćene u mjesecu i dobijeni su iz redovnog mjesečnog istraživanja Mjesečni izvještaj o zaposlenim i zaradama (obrazac RAD-1).

Obuhvatnost

Istraživanjem su obuhvaćena preduzeća, ustanove, zadruge ili organizacije, svih oblika svojine kao i njihove jedinice u sastavu, po organizaciono teritorijalnom principu, počev od nivoa opštine.

Definicije

„Zarada zaposlenog je bruto zarada koja obuhvata zaradu za obavljani rad i vrijeme provedeno na radu, uvećanu zaradu, naknadu zarade i druga lična primanja, koja podležu plaćanju poreza na dohodak fizičkih lica, utvrđena zakonom, kolektivnim ugovorom i ugovorom o radu.“ Član 78 Zakona o radu („Sl.list CG“, br. 49/08) i član 1 Zakona o izmjenama i dopunama Zakona o doprinosima za obavezno socijalno osiguranje („Sl.list CG“, br. 79 od 23.decembra 2008.godine).

Zarada se uvećava u skladu sa kolektivnim ugovorom i ugovorom o radu za: rad duži od punog radnog vremena; noćni rad; rad u dane državnih i vjerskih praznika koji su zakonom utvrđeni kao neradni dani; minuli rad i u drugim slučajevima utvrđenim kolektivnim ugovorom i ugovorom o radu.

Prosječna zarada (bruto) izračunava se tako što se ukupno isplaćena masa zarada u mjesecu dijeli sa brojem zaposlenih na koje se odnose izvršene isplate.

Zaradu bez poreza i doprinosa (neto) čini zarada (bruto) umanjena za poreze i doprinose na teret zaposlenog.

Indeks realne prosječne zarade bez poreza i doprinosa (neto) predstavlja odnos između indeksa nominalne prosječne zarade bez poreza i doprinosa (neto) i indeksa potrošačkih cijena.

5. refuses appropriate employment;
6. did not give correct data on meeting conditions for getting the unemployment status
7. is 65 years old;
8. gets right to the old-age and survivor pensions;
9. is completely incapable to work;
10. is serving the imprisonment punishment longer than 6 months;
11. is not actively looking for employment;
12. is working contrary to the regulations on labour (“unregistered work”);
13. becomes insured by agriculture, in compliance with the Law on pension and disability insurance.

WAGES

Data sources

The data on average wages present wages paid out in a month, and are obtained from regular monthly survey Monthly report on employees and their earnings (questionnaire RAD-1).

Coverage

The survey covers enterprises, institutions, cooperatives or organizations as well as their composite units of all kinds of ownership, by organizational and territorial principle, starting from the level of municipality.

Definitions

Wage of the employee is the gross earning that is consisted of earning made for work performed and time spent at work, increased earning, remuneration of earnings and other personal incomes, which are subject to income tax of natural persons, and it is determined by collective agreement and the agreement on the work.”Article 78 of the Law on work (“Official Gazette of Montenegro”, number 49/08) and article 1 of the Law on Amendments to the Act on contributions for compulsory social insurance (“Official Gazette of Montenegro”, number 79 of 23rd December, 2008)

Earnings increases in accordance with the collective agreement and the agreement on the work for: work longer than full working hours, night work, work in the days of national and religious holidays that are fixed by law as non-working days, past performance in other cases established by collective agreement and the agreement on work.

Calculation of the average gross earnings is done so that the total sum of all monthly earnings is divided by the number of employees to whom the paid earnings refer.

Net salaries and wages are tax and contributions deducted (gross) salaries and wages.

Index real average wage without taxes and contributions is the relationship between indices of nominal average wage without taxes and contributions(net), and the index of consumer prices.

CIJENE**CIJENE PROIZVODJAČA INDUSTRIJSKIH PROIZVODA**

Pod prodajnom cijenom proizvođača industrijskih proizvoda podrazumijeva se cijena po kojoj proizvođači prodaju svoje proizvode u najvećim količinama nadomaćem tržištu. U cijenu ulazi regres koji ostvaruje prodavac a odbija se rabat, popust, kasa skonto i sl, ako ih prodavac odobrava kupcima. U cijenu ne ulazi porez na dodatu vrijednost.

Ove cijene prikupljaju se mjesečnim izvještajima koje neposredno dostavljaju izabrana preduzeća za oko 250 industrijskih proizvoda. Izbor industrijskih preduzeća izvršen je prema njihovom učešću u ukupnoj realizaciji određene oblasti.

Prosječne mjesečne cijene računaju se ponderisanjem tekućih mjesečnih cijena odgovarajućih proizvoda, a godišnje prosječne cijene proizvođača industrijskih proizvoda predstavljaju neponderisani prosjek mjesečnih cijena.

Indeksi cijena izračunavaju se ponderima na bazi podataka o realizaciji industrijske proizvodnje. Svake godine vrši se korekcija pondera, a novi ponderi izračunavaju se svake pete godine.

Indeksi cijena proizvođača industrijskih proizvoda preračunavaju se početkom svake godine na prethodnu godinu kao baznu.

POTROŠAČKE CIJENE

Potrošačke cijene su cijene po kojima trgovina na malo, individualni proizvođači i vršioci usluga prodaju svoje proizvode i usluge krajnjim potrošačima, uključujući sve poreze i takse koje se plaćaju u prometu na malo.

Potrošačke cijene prate se u četiri grada Crne Gore: Podgorici, Nikšiću, Kotoru i Pljevljima, koji predstavljaju veće tržišne centre.

Cijene industrijsko-neprehrambenih proizvoda snimaju se jedanput mjesečno u periodu od 3. - 10.-og, industrijsko - prehrambenih proizvoda od 11. - 14.-og, usluga od 14-16.-og, a cijene poljoprivrednih proizvoda od 15 - 21.-og u mjesecu.

Prosječne mjesečne cijene za grad kod svih proizvoda i usluga, računaju se neponderisanom geometrijskom sredinom, dok se prosječne mjesečne cijene za Crnu Goru računaju na bazi prosječnih cijena iz četiri grada koje se ponderišu strukturom potrošnje domaćinstava.

PRICES**PRODUCER PRICES OF INDUSTRIAL PRODUCTS**

Producer prices of industrial products is the price according to which the producers sell their products in the most numerous quantities on the domestic market. The price also includes the regress achieved by the producer, and deduces the rebate, discounts, cash sconto, etc., if the producer approves them to the buyer.

The price does not include value added tax..

These prices are collected through the monthly surveys submitted directly by the chosen enterprises for about 250 industrial products. The list of industrial enterprises is done on the basis of their participation in the total realization of certain area.

Average monthly prices are calculated by weighting the current monthly prices of corresponding products, and annual average producer prices of industrial products present the un-weighted average of the monthly prices.

Price indexes are calculated with weights based on the data on the total realization of industrial production. The correction of weights is done every year, and the new weights are calculated every five years.

Indices of producer prices of industrial products are recalculated in the beginning of each year using the previous year as the base year.

CONSUMER PRICES

Consumer prices are the prices at which the retail shop, custom manufacturers and service providers sale their products and services to consumers, including all taxes and fees that are paid in the small.

Consumer prices are monitored in the four cities of Montenegro: Podgorica, Niksic, Pljevlja and Kotor, which represent major market centers.

Prices non-industrial products are recorded once a month for a period of 3 - 10 th, industrial - food products from 11 - 14 th, provider of 14-16.-og, and the prices of agricultural products 15-21-th of the month.

Average monthly prices for the city for all products and services are calculated by non-weight geometric mean, while the average monthly prices for Montenegro calculated based on average price in the four cities that weighted by structure of household consumption.

Prosječne godišnje potrošačke cijene predstavljaju neponderisani prosjek cijena za dvanaest mjeseci.

Početkom svake godine vrši se korektura pondera na bazi rasta potrošačkih cijena. Indeksi potrošačkih cijena preračunavaju se početkom svake godine na prethodnu godinu kao bazu.

POLJOPRIVREDA

Agromonetarna statistika

Izvori podataka

Podaci o prodaji i otkupu proizvoda poljoprivrede, šumarstva i ribarstva prikupljaju se mjesečnim izvještajima o realizaciji poljoprivrednih proizvoda sopstvene proizvodnje poljoprivrednih preduzeća i zemljoradničkih zadruga i mjesečnim izvještajem o otkupu poljoprivrednih proizvoda od individualnih gazdinstava.

Obuhvatnost

Mjesečnim izvještajima o prodaji i otkupu proizvoda poljoprivrede, šumarstva i ribarstva obuhvaćena su poljoprivredna preduzeća, zemljoradničke zadruge kao i druga preduzeća koja su ovlašćena da vrše otkup proizvoda od individualnih gazdinstava u cilju dalje prerade ili prodaje.

Definicije

Podaci o prodaji i otkupu proizvoda poljoprivrede, šumarstva i ribarstva obuhvataju vrijednost prodaje proizvoda iz sopstvene proizvodnje preduzeća i zadruga kao i otkup vrijednosti proizvoda od individualnih gazdinstava, koje vrše zato ovlašćene organizacije u cilju dalje prerade ili prodaje.

ŠUMARSTVO

Izvori podataka i obuhvatnost

Podaci se prikupljaju mjesečnim izvještajem ŠUM-22. Ovim izvještajem obuhvaćena su šumarska i druga preduzeća koja u državnim šumama vrše proizvodnju šumskih sortimenata, bez obzira da li im je proizvodnja šumskih sortimenata osnovna djelatnost ili nije.

Definicije

Indeks fizičkog obima iskorišćavanja šuma obračunava se na osnovu podataka o proizvodnji šumskih sortimenata, prema nomenklaturi proizvoda i ponderacionih koeficijenata. Količine predstavljaju neto drvenu masu sortimenata izraženu u kubnim metrima. Za izračunavanje indeksa proizvodnje šumskih sortimenata kao koeficijenti ponderacije koriste se prosječne prodajne cijene proizvoda.

Average annual consumer prices represent the average non-weight average prices for twelve months.

Beginning of each year is done proofreading weights on the basis of consumer price growth. Consumer price converted at the beginning of each year to the previous year as a base.

AGRICULTURE

Agro-monetary statistics

Sources of data

Data about sales and buy out of products in agriculture, forestry and fishery are collected through monthly reports on realization of agricultural products of own production of agricultural enterprises and cooperatives and through monthly report on buying out of agricultural products from individual holdings.

Coverage

Monthly survey on sales and buying out of products in agriculture, forestry and fishing covers agricultural enterprises, agricultural cooperatives, as well as other enterprises authorized to do the buying out of products from individual holdings for future processing or sale.

Definitions

Data on sales and buying out of products in agriculture, forestry and fishing cover the value of sale of products from own production of enterprises and cooperatives as well as the buying out of value of products from individual holdings, performed by authorized agencies for further processing or sale.

FORESTRY

Data sources and coverage

The data are collected on the basis of the monthly survey ŠUM-22. This report covers forestry and other enterprises dealing with production of forest assortments in state forests, disregarding if forest assortments production is their basic activity or not.

Definitions

The physical volume index of forests exploitation is calculated on the basis of data on the production of forest assortments, according to the present nomenclature of products and weights coefficients. Quantities represent net wood mass of assortments expressed in cubic meters. In order to calculate the index of forest assortments production, average purchase prices are used as weighting coefficients.

INDUSTRIJA

Izvori podataka

Prikazani podaci prikupljaju se mjesečnim izvještajima industrije na obrascu IND-1.

Obuhvatnost

Mjesečnim izvještajem industrije obuhvataju se sva preduzeća kao i njihovi djelovi koji obavljaju industrijsku djelatnost, odnosno koji su prema Klasifikaciji djelatnosti razvrstani u sektore: Vajenje rude i kamena, Preradivačka industrija i Proizvodnja i snabdijevanje električnom energijom, gasom i vodom. Preduzeća neindustrijskih djelatnosti su izvještajne jedinice ako u svom sastavu imaju jedinicu koja se bavi industrijskom djelatnošću.

Nomenklatura

Proizvodnja se iskazuje prema Nomenklaturi industrijskih proizvoda, koju čine industrijski proizvodi i usluge razvrstane po djelatnostima u kojima su proizvedeni.

Indeksi

Indeks fizičkog obima industrijske proizvodnje formiran je na osnovu podataka o količinama proizvoda i ponderacionog sistema. Podaci o količinama daju se prema Nomenklaturi proizvoda i sirovina.

Za obračun indeksa fizičkog obima industrijske proizvodnje ponderi izražavaju prosječnu dodatnu vrijednost po jedinici proizvoda.

GRAĐEVINARSTVO

Izvor podataka i obuhvat

Prikazani podaci prikupljaju se tromjesečnim izvještajem građevinarstva GRAĐ-31, kojim su obuhvaćena preduzeća iz oblasti građevinarstva, kao i jedinice koje obavljaju građevinsku djelatnost a nalaze se u sastavu negrađevinskih preduzeća. Podaci se prikupljaju od preduzeća iz Crne Gore kao i poslovnih jedinica stranih preduzeća koja obavljaju građevinsku djelatnost u Crnoj Gori.

Definicije

Vrijednost izvršenih građevinskih radova izražena je u tekućim cijenama i obuhvata sav ugrađeni građevinski materijal i utrošeni rad. Podaci o vrijednosti izvršenih građevinskih radova daju se na osnovu privremenih situacija koje ispostavljaju izvođači radova. U vrijednost nije uključeni troškovi nabavke zemljišta, projektovanja, nadzora i PDV-a. Podaci o vrijednosti izvedenih radova odnose se na radove izvedene u izvještajnom periodu na završenim i nezavršenim građevinama.

INDUSTRY

Sources of data

The shown data are collected by monthly surveys (through the questionnaire IND-1).

Coverage

Monthly industry survey includes all enterprises, as well as their parts, performing the industrial activity, i.e. those that are according to the Classification of Activities classified into the following sectors: Mining and quarrying, Manufacturing, Electricity, gas, and water supply. Enterprises of non-industrial activities represent reporting units if they have in their structure a unit dealing with industrial production.

Nomenclature

The production is presented according to the Nomenclature of industrial products, including industrial products and services structured according to the activities in which they were produced.

Indices

Index of physical scope of industrial production is formed on the basis of data on product quantities and weighting system.

The data are provided according to the Nomenclature of products and raw materials. In the calculation of the index of physical scope of industrial production, the weights express the average value added per product unit.

CONSTRUCTION

Source of data and coverage

Presented data are collected through a quarterly survey in construction GRAĐ-31, which include enterprises in construction, as well as units performing the activity in construction and are within non-construction enterprises. Data are collected from enterprises from Montenegro as well as the business units of foreign enterprises performing construction activity in Montenegro.

Definitions

Value of finalized construction works is given at current prices and includes all built material and performed work. Data about the value of finalized construction works is given on the basis of temporary situations given by contractors. The value does not include costs of buying the land, engineering, monitoring and VAT. The data on value of finalized work refer to works performed in the reporting period on finished and non-finished construction sites.

Broj radnika – Obuhvata sve radnike koji na gradilištima obavljaju građevinske, instalaterske i završne radove, bez obzira na kvalifikaciju, vrstu radnog odnosa (ugovor o radu, ugovor o djelu, iznajmljeni radnici itd.) i dužinu rada na gradilištima. Nijesu uključeni zaposleni koji rade na inženjersko-tehničkim, administrativnim i rukovodećim poslovima.

Izvršeni efektivni časovi rada - Obuhvataju stvarno obrađene časove radnika angažovanih na gradilištima u redovnom radnom vremenu kao i u prekovremenim satima.

Nove narudžbe – Predstavljaju ukupnu vrijednost ugovorenih radova između proizvođača i treće strane na osnovu zaključenog ugovora.

SPOLJNA TRGOVINA

Izvori i metodi prikupljanja podataka

Izvor podataka za statistiku spoljne trgovine je Jedinstvena Carinska Isprava o izvozu i uvozu robe, koju prilikom carinjenja robe, u ime preduzeća, podnose carinarnicama špediterska preduzeća koja imaju dispoziciju carinskog obveznika.

Obuhvatnost

Pri izvozu obuhvata se sva roba koja potiče iz domaće odnosno proizvodnje iz unutrašnjeg robnog prometa uključujući i tzv. nacionalizovanu robu (roba koja je bila uvezena i ocarinjena, pa se u nepromijenjenom ili doradenom stanju izvozi kao roba porijekla iz Crne Gore na strano tržište). Uvoz obuhvata svu robu uvezenu iz inostranstva koja je ocarinjena i puštena u unutrašnji promet u cilju reprodukcije, investicija ili široke potrošnje. Uključene su i isporuke raznih dobrotvornih organizacija i privatne poklon pošiljke.

Od januara 2008. god. MONSTAT je u skladu, sa preporukama UN-a i EUROSTAT-a primijenio opšti i specijalni trgovinski sistem.

MONSTAT je do sada koristio ublaženu definiciju specijalnog sistema trgovine. Svjesni ograničenja ublažene definicije specijalnog sistema trgovine, u rezultate spoljnotrgovinske razmjene uključen je i ponovni izvoz robe iz carinskih skladišta i slobodnih carinskih zona koji se registruje po opštem sistemu trgovine.

Opšti sistem trgovine koristi se u slučajevima kada se statistička teritorija zemlje poklapa s njenom ekonomskom teritorijom. Prema tome, opšti sistem trgovine predstavlja širi koncept i kod uvoza obuhvata svu robu koja ulazi na ekonomsku teritoriju zemlje koja prikuplja podatke, sa izuzetkom robe koja je u tranzitu, a kad izvoza obuhvata svu robu koja napušta ekonomsku teritoriju zemlje koja prikuplja podatke, sa izuzetkom robe koja je u tranzitu.

Number of workers – Includes all workers who at the construction site perform the construction, installation and final works, no matter to qualification, the type of working contract (contract on work, contract on task, rented workers, etc.) and the duration of work at the construction site. It does not include employees working on engineering-technical, administrative and managerial positions.

Effective working hours – include really performed working hours of workers engaged in the regular working hours, as well as overtime work.

New orders – present the total value of contracted works between producer and third party based on the concluded report.

EXTERNAL TRADE

Sources and methods of data collection

Data source for external trade statistics is Single Administrative Document on import and export of goods, submitted, on behalf of enterprises, by shipping agents having the disposition of Custom tributary.

Coverage

Export covers all goods of domestic i.e. internal production origin, including so-called nationalized merchandise, (imported goods cleared through the customs, and unchanged exported as goods of Montenegro origin). Import covers all merchandise imported, cleared through the customs, and put on domestic market for reproduction, investment or consumption purposes.

Deliveries of various charity organizations and private gifts are also included.

Due to the recommendations of UN and EUROSTAT, MONSTAT has since January 2008 applied the general and special trade systems.

So far MONSTAT was using the reduced definition of the special trade system. Being aware of the limitations of the reduced definition of special trade system, the results of external trade include the re-export of goods from customs warehouses and free customs zones which is registered according to general trade system.

General trade system is used in cases when the statistical territory matches with its economic territory. Accordingly, the general trade system presents the wider concept and in import it includes all goods coming in the economic territory of the country which collects data, with the exception of goods in transit, and in export it includes all goods leaving the economic territory of the country which collects data, with the exception of goods in transit.

Sistem specijalne trgovine predstavlja užu koncept i koristi se u slučajevima kada se statistička teritorija zemlje poklapa samo sa određenim dijelom njene ekonomske teritorije. Stroga definicija specijalnog sistema trgovine koristi se kada statistička teritorija obuhvata samo slobodno cirkulirajuće područje u okviru koga roba može biti raspoloživa bez carinskih ograničenja, to znači da je ona prošla carinski postupak i da se koristi za domaću upotrebu u cilju reprodukcije, široke potrošnje i investicije.

Izvoz obuhvata svu robu koja napušta slobodno cirkulirajuće područje zemlje koja prikuplja podatke.

Definicije

Vrijednost robe u spoljnoj trgovini iskazana je na osnovu cijena koje su postigla preduzeća prilikom sklapanja ugovora. Sve vrijednosti obračunate su na bazi pariteta franko granice Crne Gore: FOB-cijene za izvoz, CIF-cijene za uvoz.

Statistička vrijednost robe koja se izvozi jeste fakturna vrijednost robe. Statistička vrijednost robe koja se uvozi jeste vrijednost koja predstavlja carinsku osnovicu. Podaci o vrijednosti su obračunati po tekućim kursovima koji se primjenjuju za utvrđivanje carinske osnovice. Po tekućim kursovima koji se primjenjuju za utvrđivanje carinske osnovice takođe je izvršen obračun troškova transporta, osiguranja, pretovara i sl. koji se plaćaju u stranoj valuti.

Registracija podataka spoljne trgovine po zemljama vrši se po principu zemlje namjene kod izvoza i zemlje porijekla kod uvoza. To znači da se pri izvozu registruje zemlja u kojoj se roba troši i dalje prerađuje, a pri uvozu ona zemlja u kojoj je roba proizvodnjom dovedena u stanje u kome se uvozi

UNUTRAŠNJA TRGOVINA

Izvori podataka

Podaci o unutrašnjoj trgovini preduzeća koja se bave trgovinom na malo, prikupljaju se redovnim mjesečnim istraživanjem. Istraživanje je na bazi uzorka i obuhvaćena su preduzeća koja su u Registru jedinica razvrstavanja prema klasifikaciji djelatnosti razvrstana u oblasti 50 i 52.

Obuhvatnost

Statistika unutrašnje trgovine obuhvata i prikazuje promet preduzeća čija je osnovna djelatnost trgovina na malo. Mjesečno istraživanje trgovine na malo se radi na bazi uzorka u koji su uključena sva velika i srednja preduzeća a mala i mikro su određena metodom slučajnog uzorka.

Special trade system presents the narrow concept and is used in cases when the statistical territory of the country matches only with the certain part of its economic territory. The strict definition of the special trade system is used when the statistical territory includes only the free circulating area in which the goods can be available without the customs limitations, which means that it went through the customs procedure and that it is used for domestic use for the purpose of reproduction, wider consumption and investments.

The export includes all goods which leaves the free circulating area of the country which collects the data.

Definitions

Value of goods in external trade statistics is shown on the basis of prices fixed by organizations and enterprises by contractual stipulation. All values have been calculated on the basis of parity free on Montenegrin border, i.e. F.O.B. export prices and C.I.F. import prices.

Statistical value of goods being exported is the invoice value of goods. Statistical value of goods being imported is the value representing customs base. Data on values are calculated on the basis of exchange rates applied for establishing customs base. Costs of transport, insurance and reloading, etc. paid in foreign currency are calculated at current exchange rates applied for establishing customs base.

Registration of external trade data by country is carried out according to principle of destination country for the export and origin country for the import. It means that, in case of export, the country in which goods are consumed or further processed is registered, and in case of import – the country where the goods have been produced in the condition in which they have been imported.

INTERNAL TRADE

Sources of data

Data of internal trade of enterprises dealing with retail trade are collected through regular monthly survey. The survey is sample based and includes all enterprises which are in the Administrative register classified in the area 50 and 52.

Coverage

Statistics of internal trade covers and presents the turnover of enterprises whose primary activity is retail trade. Monthly survey of retail trade is based on a sample which included all large and medium-sized enterprises but small and micro are determined randomly.

Definicije

Promet robe u trgovini na malo predstavlja vrijednost prodate robe preduzeća koja je prodana krajnjim potrošačima, odnosno stanovništvu za ličnu potrošnju i upotrebu u domaćinstvu, kao i pravnim i fizičkim licima za obavljanje djelatnosti.

Indeksi prometa robe u stalnim cijenama su dobijeni deflacioniranjem indeksa u tekućim cijenama, odgovarajućim indeksima cijena robe na malo.

Sve objavljene indekse treba tretirati kao prethodne, što znači da može doći do izvjesnih korekcija na osnovu dobijenih rezultata.

UGOSTITELJSTVO

Izvori podataka i obuhvatnost

Podaci o ostvarenom prometu u ugostiteljstvu po mjesecima, se procjenjuje na osnovu ocjene trenda prometa, dok se ne dobiju rezultati redovnog tromjesečnog istraživanja, ugostiteljstva. Mjesečne procjene se koriguju na osnovu dobijenih rezultata.

Podaci o prometu u ugostiteljstvu prikupljaju se tromjesečnom izvještajnom službom za ugostiteljska preduzeća, po grupama usluga. Godišnjom izvještajnom službom prate se ugostiteljska preduzeća i preduzetnici. Mjesečni podaci ne obuhvataju promet preduzetnika.

Definicije

Prikazani promet u ugostiteljstvu predstavlja vrijednost izvršenih ugostiteljskih usluga koje obuhvataju usluge smještaja, ishrane, točenja pića, kao i druge usluge koje se uobičajeno obavljaju u ugostiteljstvu.

TURIZAM

Izvori podataka i obuhvatnost

Podaci o broju dolazaka turista i noćenja prikupljeni su redovnim mjesečnim izvještajem (obrazac TU-11). Izvještaji se sastavljaju na osnovi evidencija u knjigama gostiju. Istraživanje se sprovodi na bazi potpunog obuhvata.

Definicije

Izvještajne jedinice jesu svi poslovni subjekti (preduzeća/trgovačka društva, zadruge, ustanove, itd.) i njihovi dijelovi koji obavljaju djelatnost pružanja usluga smještaja turistima; zdravstvene ustanove za svoje objekte u kojima osobe borave radi medicinske rehabilitacije

Definitions

Turnover of goods in retail trade is the value of goods of an enterprise sold to final users, i.e., the population for personal consumption and use in household, as well as to private and physical persons for performing the activity.

Turnover indices at constant prices are obtained by deflating the current prices, appropriate price indices of retail.

All published indices should be regarded as preliminary, meaning that there may be certain adjustments based on the results.

CATERING

Sources of data and coverage

Data on realized turnover in catering by month are estimated on the basis of estimate of trend of turnover, until the results of the regular quarterly survey in catering are received. Monthly estimates are corrected on the basis of received results.

Data on turnover in catering are collected through quarterly survey survey for enterprises in catering, by groups of services. The annual survey collects data on enterprises in catering and entrepreneurs. Monthly data do not include turnover of entrepreneurs.

Definitions

Presented turnover in catering presents the value of performed catering services including the services of accommodation, food, pouring beverages, as well as other services usually performed in catering.

TOURISM

Sources of data and coverage

Data about arrivals of tourists and overnight stays are collected through regular monthly survey (form TU-11). The reports are compiled on the basis of records in the guest books. The survey is conducted on the basis of full coverage.

Definitions

Reporting units are all business subjects (enterprises/trade companies, cooperatives, institutions, etc.) and their parts performing activity of providing accommodation services to tourists; health institutions for their objects attended by persons for medical

(osobe same snose naknadu za taj boravak); poslovni subjekti i njihovi dijelovi koji se bave posredovanjem u pružanju smještajnih usluga (putničke agencije); poslovni subjekti koji se bave posredovanjem u smještaju gostiju u seoskim kućanstvima; turističke zajednice i druga nadležna tijela za privatne sobe, apartmane ili kuće koje neposredno iznajmljuju turistima; poslovni subjekti i njihovi dijelovi za svoja odmarališta; poslovni subjekti koji su osnovali ili vode brigu i nadzor nad planinarskim domovima; vojne ustanove za svoje ugostiteljske objekte za smještaj gostiju; poslovni subjekti koji se za vrijeme školskih praznika koriste školama, domovima i sličnim objektima kao privremenim smještajnim kapacitetima; Istraživanjem su obuhvaćene sve pravne osobe i njihovi dijelovi te fizičke osobe koje iznajmljuju smještajne objekte turistima (komercijalni objekti).

Turist je svaka osoba koja u mjestu van svog prebivališta provede najmanje jednu noć u ugostiteljskom ili drugom objektu za smještaj turista radi odmora ili rekreacije, zdravlja, studija, sporta, religije, porodice, poslova, javnih misija ili skupova.

U turiste se ne uključuju migranti, pogranični radnici, diplomati, članovi vojnih snaga na redovnim zadacima, izbjeglice, itd.

Prebivalište je mjesto u kojem se osoba nastanila s namjerom da u njemu stalno živi. Turist je registrovan u svakom mjestu ili objektu u kojem boravi i zbog toga, u slučaju promjene mjesta ili objekta, dolazi do njegova ponovnog iskazivanja, a time i do dvostrukosti u podacima. Prema tome, statistika evidentira broj dolazaka turista, a ne broj turista.

SAOBRAĆAJ, SKLADIŠTENJE I VEZE

Podaci o prevozu putnika i robe u unutrašnjem, pomorskom, vazdušnom i drumskom saobraćaju odnose se na prevoz koji obavljaju saobraćajna preduzeća registrovana u saobraćajnoj djelatnosti, bez obzira da li prevoz obavljaju unutar ili van granica naše zemlje za račun domaćeg ili inostranog korisnika.

Podaci se prikupljaju redovnim mjesečnim i godišnjim statističkim izvještajima saobraćajnih preduzeća.

Željeznički saobraćaj

Prevezeni putnici u unutrašnjem saobraćaju obuhvataju otputovale putnike, otputovale putnike u inostranstvo, prispjele iz inostranstva i putnike u tranzitu. Prevezeni teret obuhvata utovarenu robu u unutrašnjem i u međunarodnom saobraćaju: uvoz, izvoz i tranzit.

Promet na aerodromima

Podaci o prometu putnika i robe na aerodromima dobijeni su na osnovu redovnih mjesečnih i godišnjih izvještaja preduzeća za aerodromske usluge i obuhvataju kompletan promet, odnosno i domaće i strane avione.

rehabilitation (persons pay by themselves for the stay); business subjects and their parts dealing with intermediation in providing accommodation services (travel agencies); business subjects dealing with intermediation in accomodatin of guests in village houses; touris unions and other competent bodies for private rooms, apartmans or houses directly rented by tourists; business subjects and their parts for their resorts; business subjects which founded or take care an monitor the mountain lodgings; military institutions for their catering objects for accommodation of guests; business subjects which are during school holidays used by schools, hostels and similar objects as temporary placing capacities. The survey covers all legal persons and their parts as well as persons renting accommodation to tourists (commercial objects).

Tourist is a person who spends at least one night in an accommodation facility or some other object for accommodation of tourists, in a place other than his/her place of permanent residence for the reason of vacation or recreation, health, studies, sports, religion, family, business, public missions or meetings. Tourists do not include migrants, border workers, diplomats, members of military force in the regular duty, regugees, etc.

Residence is the place where the person is settled intending to permanently live in it. Tourist is registered in a place or object wher it resides and due to it, in the case of change of place or object, the double reporting may appear, which may lead to the double data. There the statistis records the arrivals of tourists, adn not the number of tourists.

TRANSPORT, STORAGE AND COMMUNICATIONS

Data on the transport of passengers and goods in the internal, marine, air and road transport refer to the transport performed by transport enterprises registered in transport activities, no matter whether the transport is done inside or outside the borders of our country on the account of domestic or foreign user.

Data are collected through regular monthly or annual statistical surveys from reports of transport enterprises.

Railway transport

Passengers transported in domestic transport include departed passengers, passengers departed abroad, passengers who arrived from abroad and passengers in transit. Transported cargo includes loaded goods in domestic and international transport:import, export and transit.

Traffic in airports

Data about traffic of passengers and goods in airports are received on the basis of regular monthly and annual reports of enteprises for airport services and they cover complete traffic, i.e., both domestic adn foreign airplanes.

Drumski saobraćaj

Podaci o prevozu odnose se na rad domaćih preduzeća drumskog saobraćaja u unutrašnjem i međunarodnom prevozu putnika i tereta.

Gradski saobraćaj

Obuhvaćen je prevoz putnika koji obavljaju saobraćajne organizacije u gradskom i prigradskom saobraćaju

Poštanski saobraćaj

Poštanski saobraćaj obuhvata: Poštanske usluge, telegrafске i telefonske usluge. Poštanske aktivnosti obuhvataju sljedeće usluge: prenos pismonosnih i paketnih pošiljki i usluge platnog prometa.

Pismonosne pošiljke odnose se na otpremljena pisma, dopisnice, novine i časopise, preporuke i vrijednosna pisma u unutrašnjem prometu, a u međunarodnom prometu i u prispjecu. Tranzit nije obuhvaćen.

Platni promet obuhvata uplate poštanskim uputnicama, po žiro i tekućim računima i računskim knjižicama, isplate međunarodnim poštanskim uputnicama i žiro i tekućim računima i računskim i invalidskim knjižicama.

Telegrafске usluga obuhvataju otpremu telegrama u unutrašnjem prometu i prometu sa inostranstvom, uključujući i tranzit.

Telefonske usluge obuhvataju fiksnu i mobilnu mrežu i prikazuju se u onim jedinicama koje se i koriste u tehničkom smislu-minutima.

MONETARNI AGREGATI**Izvori podataka**

Za izradu monetarne statistike su: bilansi Centralne banke Crne Gore i bilansi banaka. Banke dostavljaju podatke u skladu sa Odlukom o izvještajima koje banke dostavljaju Centralnoj banci Crne Gore.

Za prikupljanje i obradu podataka monetarne statistike nadležna je Centralna banka Crne Gore.

Definicije

Monetarnu bazu (M0) čine depoziti banaka kod CBCG (obračunski račun banaka i izdvojena obavezna rezerva - do januara 2008. bez dijela koji banke drže u državnim zapisima) i procijenjeni iznos gotovog novca u opticaju.

Monetarni agregat (M1) čine M0, depoziti po viđenju nebankarskog sektora kod banaka i CBCG, u eurima i drugim valutama, isključujući depozite centralne Vlade.

Road transport

Data about transport refer to the work of domestic enterprises of road transport in internal and international transport of passengers and cargo.

Local transport

It includes the transport of passengers performed by transport organizations in local and commuter services.

Postal communications

Postal communications include: Postal services, telegraphic and telephone services. Postal activities include the following services: transport of letter mail and services of balance of payments.

Letter mail refers only to mail sent, postal cards, newspaper and magazines, registered and value letters in domestic transport, as well as for the receiving in the international communications. The transit is not included.

Balance of payment includes payments made by postal money orders, by giro and current accounts and account booklets, payments by international postal money orders and giro and current accounts and account and disability booklets.

Telegraph services refer to sending of telegrams in the country as well as to foreign countries, including the transit.

Telephone services include fixed and mobile networks and are presented in the units used in the technical sense - minutes.

MONETARY AGGREGATS**The sources of data**

For preparation of monetary statistics are: the balance sheets of the Central Bank of Montenegro and of banks. Banks submit their data according to the Decision on reports that banks submit to the Central Bank of Montenegro.

The Central Bank of Montenegro is responsible for the collection and processing of the data of monetary statistics.

Definitions

Monetary base (M0) comprises banks' deposits in the CBM -Payment Operations (banks' giro accounts and allocated reserve requirement until January 2008, excluding the part which banks keep as treasury bills) and the estimated amount of cash in circulation.

Monetarni agregat (M11) čini M11 uvećan za depozite centralne Vlade po viđenju, u eurima i drugim valutama.

Monetarni agregat (M2) čine M1 i oročeni depoziti nebankarskog sektora kod banaka i CBCG, u eurima i drugim valutama, isključujući depozite centralne Vlade.

Monetarni agregat (M21) čini M11 uvećan za oročene depozite (uključujući depozite centralne Vlade), u eurima i drugim valutama.

Depoziti stanovništva – u tabeli je prikazano stanje ukupnih depozita fizičkih lica kod banaka na kraju perioda i njihova struktura po ročnosti.

PLATNI BILANS CRNE GORE

Bilans plaćanja sastavlja se u skladu sa metodologijom koju je preporučio Međunarodni monetarni fond (Balance of payments Manual, fifth edition, 1993). Izvori podataka su: Republička uprava carina Crne Gore, MONSTAT, Elektroprivreda Crne Gore, Ministarstvo finansija, poslovne banke i CBCG. Bilans plaćanja se iskazuje u eurima. Preračunavanje vrijednosti transakcija iz originalnih valuta u izvještajnu valutu obavlja se: primjenom srednjih kurseva

CBCG na dan transakcije, primjenom mjesečnih i godišnjih srednjih prosječnih kurseva CBCG, primjenom srednjeg dnevnog kursa na kraju perioda kod procjene transakcija čija se razlika stanja prati.

Početkom 2005. godine izvršena je revizija podataka koji se odnose na 2004. godinu. Naime, tokom 2004. godine postalo je tehnički moguće pratiti robne transakcije između Crne Gore i Srbije na osnovu podataka Republičke uprave carina Crne Gore, odnosno carinskih deklaracija. Do 2004. godine izvor za praćenje ovih tokova su bili jedino podaci poslovnih banaka o ostvarenom platnom prometu sa inostranstvom, odnosno ITRS.

Izvor podataka o spoljnoj trgovini od 2005. godine je MONSTAT. U 2008. godini izvršena je revizija podataka o spoljnoj trgovini za 2007. godinu u skladu sa promjenom metodologije koju koristi MONSTAT. Podaci o spoljnoj trgovini u platnom bilansu Crne Gore za 2007. i 2008. godinu prikazani su po opštem sistemu trgovine. CBCG vrši prilagođavanje podataka dobijenih od MONSTAT-a za potrebe platnog bilansa u skladu sa metodologijom MMF-a (Balance of Payments Manual, Fifth edition, IMF, 1993).

Kod evidencije transportnih usluga koriste se podaci banaka o ostvarenom platnom prometu sa inostranstvom.

Monetary aggregate (M1) comprises M0, demand deposits by the non-banking sector with banks and the CBM, in EUR and other currencies, excluding deposits of the central Government.

Monetary aggregate (M11) comprises M1 plus the central Government's demand deposits in EUR and other currencies.

Monetary aggregate (M2) includes M1 and non-banking sector's time deposits with banks and CBM, in EUR and other currencies, excluding deposits of the central Government.

Monetary aggregate (M12) comprises M11 plus the central Government's time deposits in EUR and other currencies.

Deposits by households – the table present the balance of total deposits of individuals by households at the end of period and their structure by time.

THE BALANCE OF PAYMENT OF MONTENEGRO

The balance of payments is prepared according to the methodology prescribed by the International Monetary Fund (Balance of Payment, 1993). The sources of data are: Custom Administration of Montenegro, MONSTAT, Montenegrin Electric Enterprise, the Ministry of Finance,

commercial banks, and the Central Bank of Montenegro. The balance of payments is presented in EUR. Recalculation of the transaction values from the original currency to the reporting currency is performed by: using

the mean exchange rate from the Central Bank of Montenegro and at the end of the period with evaluation transactions whose change is monitored using daily mean exchange rate.

The revision of data referring to 2004 was done in the beginning of 2005. Namely, it was technically possible in 2004 to follow transaction of goods between Montenegro and Serbia on the basis of data from Customs Administration of Montenegro i.e., the customs declarations. Until 2004 the source for viewing these currents was only data of banks about the achieved balance of payments with foreign countries, i.e., ITRS.

Since 2005, the source of data about external trade is MONSTAT. In 2008. accomplished revision data from external trade for 2007 with methodology which use MONSTAT. CBM makes adjustments of data received from MONSTAT in order to harmonize them with the IMF methodology (Balance of Payments Manual, Fifth edition, IMF, 1993).

The registering of transportation services uses banks' data on performed international payment operations.

Prihodi od **putovanja** obuhvataju procijenjene prihode od turizma, koji se dopunjavaju sa podacima o pruženim zdravstveno-rekreativnim uslugama i potrošnjom u cilju školovanja. Do prihoda od turizma se dolazi na osnovu broja noćenja (podatak MONSTAT-a) i procijenjene prosječne dnev-ne potrošnje.

Početkom 2006. godine korigovan je model za procjenu prihoda od turizma, korekcija se odnosi na 2003. i 2004. godinu. Podaci o rashodima za turizam dobijaju se na osnovu ostvarenog platnog prometa sa inostranstvom.

Finansijske usluge (usluge osiguranja i reosiguranja, zastupnička i posrednička provizija i provizija i troškovi u bankarskom poslovanju) se prate na osnovu statistike platnog prometa sa inostranstvom. Ostale usluge obuhvataju građevinske usluge, ptt i komunikacijske usluge, usluge osiguranja, kompjuterske i informacione usluge, autorska prava i honorare od izdavanja dozvola i ostale poslovne usluge. Podaci o njima se dobijaju iz statistike platnog prometa sa inostranstvom, a na osnovu izvještaja banaka.

Račun dohotka uključuje podatke iz statistike platnog prometa sa inostranstvom o kompenzacijama, zaposlenima, plaćanjima i naplatama po osnovu kamata, plaćenim i naplaćenim dividendama. Izvor podataka su izvještaji banaka i CBCG.

Tekući transferi obuhvataju podatke o transferima sektora vlade i ostalih sektora koji se dobijaju iz statistike platnog prometa sa inostranstvom.

Direktne i portfolio investicije prate se na osnovu podataka statistike platnog prometa sa inostranstvom i sprovedenih anketa. Ostale investicije koje obuhvataju podatke o kreditima, trgovinskim kreditima, gotovini i depozitima se dobijaju iz statistike platnog prometa sa inostranstvom.

Rezerve Centralne banke Crne Gore obuhvataju sredstva komercijalnih banaka deponovana kod ino banaka, sredstva Centralne banke deponovana kod ino banaka, sredstva u trezoru CBCG i rezervne pozicije kod MMF-a. Izvor podataka je CBCG (monetarna statistika).

*Incomes from **travelling** include estimated incomes from tourism, which are supplemented by data on provided health- recreation services and expenditures for education. Data on expenditures in tourism are obtained on the basis of the number of tourist overnight stays (data from MONSTAT) and estimated average daily consumption.*

The model for estimation of incomes from tourism was modified in the beginning of 2006, and the correction refers to 2003 and 2004. Data on expenditures in tourism are obtained on the basis of international payment operations.

Financial services (insurance and reinsurance, representative and mediation commission fees, and commission fees and expenses for banking operations) are covered on the basis of foreign payment operations statistics. Other services include investment work in foreign countries, PTT and communication services, forwarding services, expenses for the maintenance of representative offices, computer and information technology services, author's fee, and fee for license issuance, as well as other business services. The data is obtained from foreign payment operations statistics and banks' reports.

Income statement comprises data from foreign payment operations statistics on compensations to employees, payments, and charged dividends. The source of data is banks' reports.

Current transfers include data about transfers of Government sector and other sectors received from balance of payment with foreign countries.

Direct and portfolio investments are followed on the basis of data of international payment operations statistics and conducted surveys. Other investments include data about loans, trade loans, cash and deposits and are obtained from the balance of payment statistics with foreign countries.

The Central Bank of Montenegro's reserves comprise commercial banks' fund deposited in international bank and the CBM funds deposited in foreign banks, funds in the CBM treasury and reserve positions in IMF. The source of data is CBM (monetary statistics).

REDAKCIJA / EDITORIAL BOARD :

dr Božidar Popović, rukovodilac / coordinator

Gojko Dragaš, Branka Šušić – Radovanović,
Snežana Remiković, Bojana Radević-Radojević

Tehnički urednik / *Editor* : Radmila Šišević
Grafički prikazi / *Graphs* : Radmila Šišević
Prevod / *Translated by*: Irena Mihailović

IZDAJE I ŠTAMPA: Zavod za statistiku Crne Gore – MONSTAT, Podgorica, IV Proleterske br. 2
Prilikom korišćenja navesti izvor – preporučuje se skraćenica – MSP, br.- /2011

ODGOVARA: mr Gordana Radojević, direktor.

Izlazi 25-og u mjesecu. Tiraž 150 primjeraka. Prodajno odjeljenje: Tel: +382 20 230-773

PUBLISHED AND PRINTED BY: Statistical Office of Montenegro – MONSTAT, Podgorica, IV Proleterske no. 2
Data using is subject to quoting source – abbreviation recommended: MSR, no. -/2011

RESPONSIBLE: Gordana Radojevic, M.S., Director.

Issued on 25th in a month. Circulation 150 copies. Department of sales: +382 20 230-773

E-mail: contact@monstat.org Web Site: www.monstat.org