

ZAVOD ZA STATISTIKU CRNE GORE  
*STATISTICAL OFFICE OF MONTENEGRO*

GODINA LVIII / YEAR ( 58)

ISSN 0354-365X

**MJESEČNI STATISTIČKI PREGLED**  
***MONTHLY STATISTICAL REVIEW***

**2010**  
**12**

**PODGORICA, 2010**

IZDAJE I ŠTAMPA: Zavod za statistiku Crne Gore - MONSTAT  
*PUBLISHED AND PRINTED BY: Statistical Office of Montenegro - MONSTAT*

ODGOVARA: Radomir Đurović, direktor  
*RESPONSIBLE: Radomir Đurović, Director*

Podgorica, IV Proleterske br. 2, Tel: +382 20 230-811  
E-mail: [statistika@monstat.org](mailto:statistika@monstat.org). Web Site: [www.monstat.org](http://www.monstat.org)

CIP – Katalogizacija u publikaciji  
Centralna narodna biblioteka Crne Gore, Cetinje  
311 / 314

Mjesečni statistički pregled = Monthly  
Statistical review. Urednik Rajko Laković. – God.  
1, br.1 (1953) – . - Podgorica ( IV Proleterske br. 2)  
Zavod za statistiku Crne Gore – Monstat, 1992 ( Podgorica:  
Zavod za statistiku Crne Gore ) . – 30 cm

Mjesečno. – je nastavak: Mjesečni statistički pregled  
NR Crne Gore (Titograd ) = ISSN 0544-912X  
ISSN 0354-365X = Mjesečni statistički pregled (Podgorica)  
COBISS. CG ID 07622928

## UVOD

U MJESEČNOM STATISTIČKOM PREGLEDU Zavod za statistiku – MONSTAT objavljuje podatke za Crnu Goru. To su službeni statistički podaci koji se prikupljaju i obrađuju u skladu sa programom statističkih istraživanja i rezultat su rada zvaničnih statističkih službi.

Statistički podaci u MJESEČNOM STATISTIČKOM PREGLEDU prikazani su u godišnjim, kvartalnim i mjesečnim serijama i sistematizovani su u dva dijela. Godišnje serije obuhvataju tri do pet posljednjih uzastopnih godina. Kvartalne serije se odnose na kvartale u prošloj i tekućoj godini, a mjesečne serije obuhvataju period od trinaest mjeseci iz tekuće i prethodne godine. Ispod odgovarajućih tabela, gdje je potrebno, daju se kratka objašnjenja.

Pored podataka koje prikuplja i obrađuje Zavod za statistiku Crne Gore - MONSTAT, u ovom broju PREGLEDA su objavljeni i podaci Zavoda za zapošljavanje i Centralne Banke Crne Gore.

Podaci za tekuću godinu su obično prethodni, pa su moguće manje greške koje se postepeno ispravljaju u narednim brojevima i obilježavaju se zvjezdicom, u onom broju PREGLEDA u kojem je izvršena ispravka.

Sadržaj publikacije je prilagođen međunarodnim potrebama i obavezama u smislu primjene Klasifikacije djelatnosti (NACE Rev1), koja se primjenjuje od 01.01.2001. godine.

Od januara 2008. godine MJESEČNI STATISTIČKI PREGLED je obogaćen novim sadržajima i preveden je na engleski jezik.

## INTRODUCTION

*Statistical Office of Montenegro publishes statistical data for Montenegro in the MONTHLY STATISTICAL REVIEW. These are the official statistical data collected and processed according to the Programme of Statistical Surveys as the result of official statistical services.*

*Statistical data in the MONTHLY STATISTICAL REVIEW are presented in annual, quarterly and monthly series and are systemized in two parts. The Annual series of data cover 3-5 last consecutive years. Quarterly series refer to quarters in the previous and current year, and monthly series include the period of thirteen months from the previous and current year. Where necessary, short explanations are given below the tables.*

*Besides data collected by the Statistical Office of Montenegro - MONSTAT, this issue of MONTHLY STATISTICAL REVIEW also publishes data from Employment Agency and Central Bank of Montenegro.*

*Data for the current year are usually preliminary, so minor errors are possible and are gradually corrected in the following numbers, and they are marked with the small star in the number of the MONTHLY STATISTICAL REVIEW where the correction has been made.*

*The contents of the publication is adapted to the international needs and obligations regarding the application of the Classification of Activities (NACE, REV1), used since January 2001.*

*Since January 2008, the MONTHLY STATISTICAL REVIEW contains new contents and has been translated into English language.*

## ZNACI

## SYMBOLS

nema pojave	=	—	=	No occurrence of event
ne raspolaze se podatkom	=	...	=	Data not available
podatak je manji od 0,5 date jedinice mjere	=	0	=	Value not zero but less than 0,5 of the unit of E
prosjeak	=	Ø	=	Average
ispravljen podatak	=	*	=	Corrected data
nepotpun, odnosno nedovoljno provjeren podatak	=	( )	=	Incomplete or insufficiently checked data



## SADRŽAJ

<b>UVOD</b> .....	3
<b>SADRŽAJ</b> .....	5
<b>OPŠTI PREGLED INDEKSA</b>	
Kvartalni indeksi .....	7
Mjesečni indeksi .....	8
<b>STANOVNIŠTVO</b>	
Prirodno kretanje stanovništva .....	10
Prirodno kretanje stanovništva po opštinama .....	11
Kretanje stanovništva unutar Crne Gore po opštinama .....	12
<b>ZAPOSLENOST I ZARADE</b>	
Zaposleni po sektorima djelatnosti .....	13
Zaposleni po opštinama .....	14
Nezaposlena lica .....	15
Prosječne zarade po sektorima djelatnosti .....	16
Prosječne zarade bez poreza i doprinosa po sektorima djelatnosti .....	17
Indeksi prosječnih zarada po sektorima djelatnosti .....	18
Indeksi prosječnih zarada bez poreza i doprinosa po sektorima djelatnosti .....	19
Prosječne zarade po opštinama .....	20
Prosječne zarade bez poreza i doprinosa po opštinama .....	21
<b>CIJENE</b>	
Indeksi cijena proizvođača industrijskih proizvoda .....	22
Indeksi potrošačkih cijena po grupama proizvoda .....	24
Indeksi potrošačkih cijena .....	26
<b>ŠUMARSTVO</b> .....	27
<b>INDUSTRIJA</b>	
Indeksi industrijske proizvodnje po sektorima .....	28
Indeksi industrijske proizvodnje po podsektorima .....	29
<b>GRAĐEVINARSTVO</b>	
Vrijednost izvršenih i ugovorenih radova, broj zaposlenih i izvršeni efektivni časovi .....	31
<b>SPOLJNA TRGOVINA</b>	
Izvoz i uvoz po zemljama .....	32
Izvoz i uvoz robe .....	33
<b>UNUTRAŠNJA TRGOVINA</b>	
Promet u trgovini na malo .....	36
Prodaja i otkup proizvoda poljoprivrede, šumarstva i ribarstva .....	37
<b>UGOSTITELJSTVO</b>	
Promet u ugostiteljstvu .....	38
<b>TURIZAM</b>	
Dolasci i noćenja turista po zemljama i vrsti mjesta .....	39
Dolasci i noćenja gostiju po vrstama turističkih mjesta .....	40
Broj dolazaka i noćenja turista .....	40
<b>SAOBRAĆAJ, SKLADIŠTENJE I VEZE</b>	
Željeznički saobraćaj .....	41
Drumski saobraćaj .....	42
Vazdušni saobraćaj .....	43
Pomorski saobraćaj .....	44
PTT saobraćaj .....	44
<b>MONETARNI AGREGATI I PLATNI BILANS</b> .....	45
<b>METODOLOŠKA OBJAŠNJENJA</b> .....	47

**CONTENTS**

<b>INTRODUCTION</b> .....	3
<b>CONTENTS</b> .....	5
<b>SUMMARY OF INDICES</b>	
<i>Quarterly indices</i> .....	7
<i>Monthly indices</i> .....	8
<b>POPULATION</b>	
<i>Natural population changes</i> .....	10
<i>Natural population changes by municipality</i> .....	11
<i>Migrations inside Montenegro by municipality</i> .....	12
<b>EMPLOYMENT AND WAGES</b>	
<i>Employees by activity sectors</i> .....	13
<i>Employees by municipality</i> .....	14
<i>Unemployed persons</i> .....	45
<i>Average wages by activity sectors</i> .....	16
<i>Average wages without taxes and contributions by activity sector</i> .....	17
<i>Indices of average wages by activity sector</i> .....	18
<i>Indices of average wages without taxes and contributions by activity sector</i> .....	19
<i>Average wages by municipality</i> .....	20
<i>Average wages without taxes and contributions by municipality</i> .....	21
<b>PRICES</b>	
<i>Producers price indices for industrial products</i> .....	22
<i>Retail by groups of products</i> .....	24
<i>Consumer prices index</i> .....	26
<b>FORESTRY</b>	
	27
<b>INDUSTRY</b>	
<i>Indices of industrial production by sectors</i> .....	28
<i>Indices of industrial production by subsectors</i> .....	29
<b>CONSTRUCTION</b>	
<i>Value of finalized and ordered works, number of employees and finalized effective hours</i> .....	31
<b>EXTERNAL TRADE</b>	
<i>Exports and imports by countries</i> .....	32
<i>Exports and imports of goods</i> .....	33
<b>DOMESTIC TRADE</b>	
<i>Turnover in retail trade</i> .....	40
<i>Sale and buying out of products from agriculture, forestry and fishery</i> .....	41
<b>CATERING</b>	
<i>Turnover in catering</i> .....	42
<b>TOURISM</b>	
<i>Tourist arrivals and tourist overnight stays by country and type of resort</i> .....	43
<i>Tourist arrivals and tourist overnight stays by type of resort</i> .....	44
<i>Tourist arrivals and tourist overnight stays</i> .....	44
<b>TRANSPORT, STORAGE AND COMMUNICATIONS</b>	
<i>Railway transport</i> .....	45
<i>Road transport</i> .....	46
<i>Air transport</i> .....	47
<i>Marine transport</i> .....	48
<i>Postal, telegraph and telephone (PTT) communications</i> .....	48
<b>MONETARY AGGREGATES AND BALANCE OF PAYMENTS</b> .....	
	49
<b>METHODOLOGICAL EXPLANATION</b> .....	
	51

## OPŠTI PREGLED INDEKSA / SUMMARY OF INDICES

## Kvartalni indeksi / Quarterly indices

	2009 2008	Kvartali / Quarters							
		II 2009 I 2009	III 2009 II 2009	IV 2009 III 2009	II 2010 I 2010	II 2010 II 2009	III 2010 II 2010	III 2010 III 2009	
<b>STANOVNIŠTVO <sup>1)</sup></b>									<b>POPULATION <sup>1)</sup></b>
Živorodeni	104.7	99.4	114.8	103.9	94.4	80.2	121.4	84.9	Liveborn
Umrli	102.7	95.0	97.8	101.0	99.8	90.1	99.9	92.1	Deaths
Prirodni priraštaj	105.7	113.5	161.6	108.8	75.5	52.9	222.5	72.9	Natural increase
Zaključeni brakovi	114.0	109.2	128.0	89.5	133.8	100.2	127.5	99.8	Marriages
Razvedeni brakovi	99.1	101.7	65.9	161.7	122.8	100.8	91.9	140.7	Divorces
<b>ZAPOSLENOST I ZARADE</b>									<b>EMPLOYMENT AND EARNINGS</b>
Broj zaposlenih	104.8	103.1	101.7	97.3	...	...	...	...	Number of employees
Lica koja traže zaposlenje	96.2	95.6	97.2	109.0	100.4	116.0	95.7	114.2	Persons looking for employm.
Nominalne zarade bez poreza i doprinosa	111.3	100.1	98.1	100.6	101.9	101.7	101.9	105.8	Nominal wages without taxes and contributions
Realne zarade bez poreza i doprinosa	107.6	99.0	98.3	100.4	101.7	101.4	101.9	105.4	Real wages without taxes and contributions
<b>CIJENE</b>									<b>PRICES</b>
Indeks potrošačkih cijena	103.4	101.1	99.8	100.2	100.2	100.3	100.0	100.4	Consumer prices index
Hrana i bezalkoholna pića	103.3	100.8	98.5	99.9	100.2	98.7	100.2	101.1	Food and non alch. beverages
Odjeća i obuća	100.8	99.5	99.8	101.0	99.8	100.3	99.9	100.4	Clothes and footwear
Pokućstvo i oprema za kuću	97.3	98.1	98.4	97.9	99.7	95.6	100.2	98.4	Household furnishing
Cijene proizvođača ind.proizvoda	96.1	98.5	98.3	101.6	103.2	99.9	101.2	102.3	Produc. price ind. for ind.prod.
<b>INDUSTRIJA</b>									<b>INDUSTRY</b>
Indeksi fizičkog obima	67.8	69.6	73.1	130.9	98.2	120.5	84.7	142.0	Indices of physical scope
<b>GRAĐEVINARSTVO</b>									<b>CONSTRUCTION</b>
Vrijednost izvedenih građevinskih radova	78,5	134,9	109,5	95,9	171,5	100,7	110,8	101,8	Value of performed construction works
Izvršeni efektivni časovi na gradilištu	80,8	110,6*	95,9	92,3	115,6	91,8	102,2	97,8	Performed effective hours at the construction site
<b>SPOLJNA TRGOVINA</b>									<b>EXTERNAL TRADE</b>
Izvoz	66.6	72.6	145.6	102.6	155.0	166.2	100.6	114.9	Export
Uvoz	65.4	117.4	105.9	101.8	142.8	107.0	106.0	107.2	Import
<b>UNUTRAŠNJA TRGOVINA</b>									<b>DOMESTIC TRADE</b>
Promet u trgovini na malo	91.0	118.3	122.2	83.4	128	105.2	119.9	103.1	Turnover in retail trade
<b>UGOSTITELJSTVO</b>	105.0	265.4	240.5	25.5	253.1	95.6	246.9	102.0	<b>CATERING</b>
<b>TURIZAM</b>									<b>TOURISM</b>
Posjete turista	101.6	387.1	396.5	7.2	467.1	103.3	410.2	106.8	Visits of tourists
Noćenja turista	96.9	477.4	475.2	4.4	664.6	104.6	488.0	107.5	Overnight stays of tourists
<b>SAOBRAĆAJ, SKLADIŠTENJE I VEZE</b>									<b>TRANSPORT, STORAGE AND COMMUNICATIONS</b>
Drumski-prevoz robe	130.8	152.0	95.8	96.5	165.0	80.5	95.9	80.1	Road - transport of goods
Prevoz putnika	82.6	155.5	103.0	56.3	196.4	78.5	114.7	87.5	Transport of passengers
Željeznički – prevoz robe	54.7	63.1	135.4	108.4	127.5	240.4	89.4	134.0	Railway - transport of goods
Prevoz putnika	79.4	133.3	160.4	49.7	78.7	71.1	181.2	94.8	Transport of passengers
Vazdušni – prevoz robe	99.2	102.4	114.5	290.1	461.8	320.7	99.0	277.2	Air – transport of goods
Prevoz putnika	86.2	197.9	192.7	27.8	200.8	118.3	199.5	122.5	Transport of passengers
Pomorski– Prevoz robe – t milje	86.3	83.4	343.1	36.3	113.4	117.9	273.7	93.3	Marine- transport of goods – t miles

## OPŠTI PREGLED INDEKSA / SUMMARY OF INDICES

## Mjesečni indeksi / Monthly indices

Ø 2009 = 100

	2009 2008	I-XI 2010 I-XI 2009	XI- 2010 X -2010	2009			2010	
				XI	XII	I	II	III
<b>STANOVNIŠTVO <sup>1)</sup></b>								
Živorodeni	104.7	83.5	116.5	96.1	126.5	82.6	78.2	73.7
Umrli	102.7	89.4	116.6	93.8	98.8	97.4	86.8	85.6
Prirodni priraštaj	105.7	69.5	116.0	106.2	190.4	51.4	60.0	48.8
Zaključeni brakovi	114.0	95.3	95.9	103.9	90.1	76.4	72.4	58.4
Razvedeni brakovi	99.1	105.4	102.0	100.0	128.9	57.9	81.6	126.3
<b>ZAPOSLENOST I ZARADE</b>								
Broj zaposlenih	104.8	...	99.9	100.3	97.5	98.9	98.5	98.3
Lica koja traže zaposlenje	96.2	112.8	100.9	104.3	106.3	109.4	114.1	116.7
Nominalne zarade bez poreza i doprinosa	111.3	103.0	100.6	98.5	101.5	101.7	100.0	100.4
Realne zarade bez poreza i doprinosa	107.6	102.5	100.4	98.3	101.2	101.7	99.9	99.9
<b>CIJENE</b>								
Indeks potrošačkih cijena	103.4	100.5	100.2	100.2	100.3	100.0	100.1	100.5
Hrana i bezalkoholna pića	103.3	100.1	100.2	98.7	99.1	99.4	99.7	100.1
Odjeća i obuća	100.8	100.2	100.2	100.5	100.1	100.4	100.2	100.2
Pokućstvo i oprema za kuću	97.3	96.5	100.3	96.6	96.2	96.9	97.0	96.9
Cijene proizvođača industrijskih proizv.	96.1	99.1	100.0	99.7	100.4	97.4	96.7	96.1
<b>ŠUMARSTVO</b>								
Indeksi fizičkog obima	75.8	121.1	76.7	91.4	79.7	13.8	19.9	42.4
<b>INDUSTRIJA</b>								
Indeksi fizičkog obima	67.8	114.7	106.6	85.0	107.1	121.6	108.4	127.3
<b>SPOLJNA TRGOVINA</b>								
Izvoz	66.6	118.9	149.2	117.7	103.7	59.0	80.9	102.5
Uvoz	65.4	100.6	103.2	100.1	113.5	54.4	78.5	95.3
<b>UNUTRAŠNJA TRGOVINA</b>								
Promet robe na malo	91.02	102.5	93	89.4	109.9	73.7	86.1	81.4
Prodaja i otkup proizvoda poljoprivrede, šumarstva i ribarstva	104.4	85.1	105.2	181.9	104.3	52.1	58.6	59.5
<b>UGOSTITELJSTVO</b>								
Promet u ugostiteljstvu	93.0	99.7	66.6	41.9	37.3	34.3	34.3	39.9
<b>TURIZAM</b>								
Posjete turista	101.6	104.6	59.6	14.8	14.1	14.1	17.0	17.1
Noćenja turista	96.9	105.5	53.8	10.1	7.7	9.1	10.2	11.3
<b>SAOBRAĆAJ, SKLADIŠT. I VEZE</b>								
Drumski – prevoz robe	130.8	259.2	395.7	96.0	123.1	60.4	45.9	41.1
Prevoz putnika	82.6	52.4	75.4	68.4	64.9	57.0	44.4	104.1
Željeznički – prevoz robe	54.7	143.6	88.5	111.5	103.3	130.0	128.9	123.1
Prevoz putnika	79.4	46.0	69.1	61.4	90.7	84.6	133.1	66.5
Vazdušni - prevoz putnika	86.2	72.9	73.3	54.3	62.4	59.9	52.7	65.7
Pomorski- prevoz robe – t milje	77.6	88.2	...	71.8	66.1	55.1	49.8	75.8

1) Prethodni podaci

2) Podaci za I–X 2010/ I–X 2009

3) Podaci za X 2010/ IX 2010

1) Previous data

2) Data for I–X 2010/ I–X 2009

3) Data for X 2010/ IX 2010



## OPŠTI PREGLED INDEKSA/ SUMMARY OF INDICES

## Mjesečni indeksi / Monthly indices

2010								
IV	V	VI	VII	VIII	IX	X	XI	
								<b>POPULATION <sup>1)</sup></b>
68.6	67.6	85.3	95.1	95.4	78.5	91.4	...	Liveborn
88.0	86.0	95.2	98.1	87.2	83.7	97.6	...	Deaths
27.6	28.9	64.3	88.9	112.7	67.3	78.1	...	Natural increase
95.9	111.8	69.3	104.5	122.5	126.2	121.0	...	Marriages
113.2	105.3	107.9	102.6	68.4	128.9	131.6	...	Divorces
								<b>EMPLOYMENT AND EARNINGS</b>
...	...	...	...	...	...	...	...	Number of employees
116.9	114.1	110.3	109.6	107.8	109.3	112.4	113.4	Persons looking for employment
100.4	105.2	102.2	100.6	108.9	103.9	103.0	103.7	Nominal wages without taxes and contributions
99.8	104.7	102.1	100.3	108.5	100.5	102.2	102.7	Real wages without taxes and contributions
								<b>PRICES</b>
100.6	100.5	100.1	100.3	100.4	100.5	100.8	101.0	Consumer prices index
100.3	100.2	99.4	99.8	100.2	100.6	101.2	101.4	Food and non alch. beverages
100.2	100.4	100.0	99.9	99.9	100.2	100.2	100.4	Clothes and footwear
96.7	96.6	96.5	96.5	96.9	97.0	96.9	97.2	Household furnishing
97.6	101.3	100.6	99.7	100.0	100.2	100.0	100.0	Produc. price ind. for ind. prod.
								<b>FORESTRY</b>
81.2	110.3	202.8	177.8	227.8	226.3	144.6	110.9	Indices of physical scope
								<b>INDUSTRY</b>
121.9	109.5	119.2	102.2	87.7	112.2	118.3	126.1	Indices of physical scope
								<b>EXTERNAL TRADE</b>
113.1	156.5	105.9	129.0	129.5	119.4	125.1	186.6	Export
100.5	101.4	124.1	126.8	114.4	104.5	101.8	105.0	Import
								<b>INTERNAL TRADE</b>
93.05	102.3	113.5	112.7	140.4	117.1	102.2	95.1	Turnover of retail trade goods
57.5	57.0	90.2	98.6	165.5	105.9	91.2	96.0	Sales and buy out of products in agriculture, forestry and fishing
								<b>CATERING</b>
40.9	106.4	127.3	200.9	253.3	216.4	63.1	42.0	Turnover in catering
								<b>TOURISM</b>
25.7	78.6	120.6	318.8	429.5	174.5	28.5	17	Visits of tourists
15.4	60.0	128.2	332.8	503.5	157.6	19.7	10.6	Overnight stays of tourists
								<b>TRANSPORT, STORAGE AND COMMUNIC.</b>
101.9	105.1	75.5	86.1	108.2	65.9	65.5	98.2	Road - transport of goods
90.7	101.4	87.0	123.4	129.0	80.3	69.5	78.6	Transport of passengers
131.1	180.5	175.4	142.4	123.4	169.3	162.4	146.8	Railway - transport of goods
66.5	72.6	84.7	163.3	157.3	83.0	66.5	92.3	Transport of passengers
73.6	111.7	172.7	260.0	269.3	184.7	99.5	125.0	Air - transport of passengers
63.0	73.6	68.3	237.9	215.9	110.1	-	52.9	Marine- transport of goods - t miles

<sup>1)</sup> Prethodni podaci<sup>1)</sup> Preliminary data

**PRIRODNO KRETANJE STANOVNIŠTVA**  
**NATURAL POPULATION CHANGES**

**Crna Gora / Montenegro**

	Živorodeni <i>Live births</i>			Umrli <i>Deaths</i>			Vitalni indeks  <i>Vital index</i>	Prirodni priraštaj  <i>Natural increase</i>	Brakovi / <i>Marriages</i>	
	<i>ukupno</i> <i>Total</i>	<i>muško</i> <i>Male</i>	<i>žensko</i> <i>Female</i>	<i>ukupno</i> <i>Total</i>	<i>muško</i> <i>Male</i>	<i>žensko</i> <i>Female</i>			sklopljeni <i>New marriages</i>	razvedeni <i>Divorces</i>
2004	7849	4030	3819	5707	3011	2696	1.38	2142	3440	505
2005	7352	3883	3469	5839	3082	2757	1.26	1513	3291	499
2006	7531	3969	3562	5968	3092	2876	1.26	1563	3462	470
2007	7834	4136	3698	5979	3048	2931	1.31	1855	4005	453
2008	8258	4313	3945	5708	2982	2726	1.45	2550	3445	460
2009	8642	4597	4045	5862	3008	2854	1.47	2780	3928	456
Ø I - X 2009	704	376	328	495	254	241	1.42	209	329	37
Ø I - X 2010	607	311	296	456	240	216	1.33	151	314	39
2009										
X	768	395	373	525	271	254	1.46	243	401	44
XI	692	382	310	446	232	214	1.55	246	340	38
XII	911	453	458	470	235	235	1.94	441	295	49
2010 <sup>1)</sup>										
I	598	312	286	480	267	213	1.25	118	250	22
II	570	299	271	428	231	197	1.33	142	237	31
III	561	292	269	428	229	199	1.31	133	191	48
IV	509	259	250	452	232	220	1.13	57	314	43
V	518	267	251	435	239	196	1.19	83	366	40
VI	637	331	306	486	257	229	1.31	151	227	41
VII	720	372	348	503	253	250	1.43	217	342	39
VIII	710	341	369	443	206	237	1.60	267	401	26
IX	585	297	288	423	231	192	1.38	162	413	49
X	658	339	319	477	252	225	1.38	181	396	50
<b>I-X 2010 / I-X 2009</b>	86.2	82.6	90.2	92.1	94.3	89.7		72.2	95.3	105.4

<sup>1)</sup> Prethodni podaci

<sup>1)</sup> Preliminary data

**PRIRODNO KRETANJE STANOVNIŠTVA PO OPŠTINAMA**  
**NATURAL POPULATION CHANGES BY MUNICIPALITY**  
**I – X 2010. god.<sup>1)</sup>**

	Živorodeni / <i>Live births</i>			Umrli / <i>Deaths</i>			Vitalni indeks <i>Vital index</i>	Prirodni priraštaj <i>Natural increase</i>	Brakovi / <i>Marriages</i>	
	ukupno <i>Total</i>	muški <i>Male</i>	ženski <i>Female</i>	ukupno <i>Total</i>	muški <i>Male</i>	ženski <i>Female</i>			sklopljeni <i>New marriages</i>	razvedeni <i>Divorces</i>
<b>CRNA GORA MONTENEGRO</b>	<b>6066</b>	<b>3109</b>	<b>2957</b>	<b>4555</b>	<b>2397</b>	<b>2158</b>	<b>1.33</b>	<b>1511</b>	<b>3137</b>	<b>389</b>
ANDRIJEVICA	37	23	14	56	25	31	0.66	-19	12	-
BAR	384	197	187	261	155	106	1.47	123	243	37
BERANE	348	165	183	278	154	124	1.25	70	178	13
BIJELO POLJE	514	275	239	380	199	181	1.35	134	225	23
BUDVA	200	113	87	104	56	48	1.92	96	102	3
CETINJE	123	67	56	139	79	60	0.88	-16	93	8
DANILOVGRAD	150	79	71	140	64	76	1.07	10	47	9
HERCEG NOVI	273	146	127	239	123	116	1.14	34	175	29
KOLAŠIN	72	30	42	90	45	45	0.80	-18	33	5
KOTOR	211	101	110	177	74	103	1.19	34	131	10
MOJKOVAC	53	24	29	93	46	47	0.57	-40	34	2
NIKŠIĆ	702	367	335	583	294	289	1.20	119	333	29
PLAV	127	65	62	103	46	57	1.23	24	63	11
PLJEVLJA	185	84	101	343	169	174	0.54	-158	141	15
PLUŽINE	16	9	7	35	17	18	0.46	-19	10	1
PODGORICA	2016	1026	990	1150	643	507	1.75	866	959	143
ROŽAJE	317	150	167	93	52	41	3.41	224	145	30
ŠAVNIK	12	5	7	25	11	14	0.48	-13	7	1
TIVAT	131	76	55	99	51	48	1.32	32	76	2
ULCINJ	174	95	79	127	70	57	1.37	47	121	16
ŽABLJAK	21	12	9	40	24	16	0.53	-19	9	2

<sup>1)</sup> Prethodni podaci

<sup>1)</sup> Preliminary data

**KRETANJE STANOVNIŠTVA UNUTAR CRNE GORE PO OPŠTINAMA**  
**MIGRATIONS INSIDE MONTENEGRO BY MUNICIPALITY**

I-XI 2010. god.<sup>1)</sup>

OPŠTINE / MUNICIPALITIES	DOSELJENI / MOVED IN	ODSELJENI / MOVED OUT OF	SALDO / BALLANCE
<b>UKUPNO / TOTAL</b>	<b>3466</b>	<b>3466</b>	<b>0</b>
ANDRIJEVICA	29	68	-39
BAR	552	188	364
BERANE	118	283	-165
BIJELO POLJE	134	471	-337
BUDVA	293	110	183
CETINJE	75	138	-63
DANILOVGRAD	172	112	60
HERCEG NOVI	147	129	18
KOLAŠIN	17	101	-84
KOTOR	126	113	13
MOJKOVAC	46	114	-68
NIKŠIĆ	191	396	-205
PLAV	41	90	-49
PLJEVLJA	58	200	-142
PLUŽINE	4	42	-38
PODGORICA	1152	472	680
ROŽAJE	47	173	-126
SAVNIK	5	80	-75
TIVAT	118	73	45
ULCINJ	114	72	42
ŽABLJAK	27	41	-14

<sup>1)</sup> Prethodni podaci

<sup>1)</sup> Preliminary data

**ZAPOSLjeni PO SEKTORIMA DJELATNOSTI**  
**EMPLOYEES BY ACTIVITY SECTORS**

	Ukupno <i>Total</i>	PO SEKTORIMA / BY ACTIVITY SECTORS						
		poljoprivreda šumarstvo i vodoprivreda <i>Agriculture, forestry and water supply</i>	ribarstvo <i>Fishing</i>	vadenje ruda i kamena <i>Mining and quarrying</i>	prerađivačka industrija <i>Manufacturing</i>	proizvodnja elekt. energije <i>Electricity supply</i>	građevinarstvo <i>Construction</i>	trgovina na veliko i malo, opravka <i>Wholesale and retail trade, repair</i>
Ø 2006	150800	2607	115	4159	26065	5627	6853	29602
Ø 2007	156408	2586	112	3753	25697	5594	6647	30750
Ø 2008	166221	2651	129	3721	24335	6042	8831	31854
Ø 2009	174152	2700	119	3178	21824	5456	9997	36117
2009								
IX	176936	2734	114	3081	20807	5273	9998	38264
X	175468	2717	114	3081	20694	5273	9965	38226
XI	174736	2720	113	3001	20427	5267	9914	38225
XII	169859	2710	111	3017	19419	4972	9520	37436
2010								
I	172301	2729	111	2927	19424	5207	10080	38339
II	171557	2767	111	2464	18945	5214	9990	38713
III	171263	2729	112	2571	18847	5172	9228	39415
IV <sup>1)</sup>	158211	2271	91	2278	15883	4007	7077	35728
V	158716	2261	81	2298	15833	3987	7057	36684
VI	159221	2291	106	2268	15513	4037	7357	36529
VII	160224	2280	105	2260	15608	4040	7630	36600
VIII	158535	2270	100	2248	15690	4100	7357	35980
IX	157570	2281	101	2288	15793	4047	7157	35838
X	157918	2235	105	2270	15794	4204	7257	36401
XI	157712	2006	101	2095	15738	4209	7324	36309

/nastavak/

/ continued /

	PO SEKTORIMA / BY ACTIVITY SECTORS							
	hoteli i restorani <i>tels and restaurants</i>	saobraćaj, skladištenje i veze <i>Transport, storage and communi-cations</i>	finansijnsko posredovnje <i>Financial activities</i>	aktivnosti u vezi s nekretninama <i>Real estate activities, renting</i>	državna uprava i obav. socijalno osiguranje <i>Public administration and social insurance</i>	obrazo- vanje <i>Education</i>	zdravstveno i socijalno osiguranje <i>Health and social work</i>	ostale komu- nalne, društ. i lične usluge <i>Other community, social &amp; pers. service activities</i>
Ø 2006	10928	12133	3114	5905	10345	12846	12012	8489
Ø 2007	11307	11358	3143	5354	17575	12687	12004	7841
Ø 2008	14641	12798	3476	5631	18643	12892	12356	8221
Ø 2009	16678	13858	3748	7356	18860	12992	12238	9031
2009								
IX	16940	13475	4013	8335	19005	13023	12282	9592
X	15777	13425	4008	8314	18983	13013	12296	9582
XI	15364	13399	4013	8350	18998	13005	12309	9631
XII	14351	13275	3925	8163	18691	12706	12089	9474
2010								
I	14627	13437	3959	8292	18686	12755	12183	9545
II	14656	13102	3943	8334	18671	12757	12245	9645
III	13809	13369	3934	8580	18692	12708	12327	9770
IV <sup>1)</sup>	13461	12335	3973	9475	18855	11375	10832	10570
V	13048	12325	3955	9485	18875	11395	10852	10580
VI	13441	12385	3935	9475	18915	11425	10932	10612
VII	14126	12350	3930	9490	18900	11400	10900	10605
VIII	13246	12330	3920	9450	18909	11410	10905	10620
IX	12546	12335	3925	9465	18895	11395	10912	10592
X	11758	12178	3976	9614	18927	11820	10881	10498
XI	11594	12144	4023	9714	19037	11914	10993	10511

<sup>1)</sup> Vidi metodološka objašnjenja na strani 47<sup>1)</sup> See methodological explanation on page 47

## ZAPOSLENI PO OPŠTINAMA / EMPLOYEES BY MUNICIPALITY

	Opštine / Municipalities										
	Andrijevica	Bar	Berane	Bijelo Polje	Budva	Danilovgrad	Žabljak	Kolašin	Kotor	Mojkovac	Nikšić
Ø 2006	540	11105	5218	7316	9308	2541	805	1410	5547	1495	17616
Ø 2007	528	11125	5803	8060	8323	2496	937	1591	5983	1503	17481
Ø 2008	537	11876	6092	8628	8951	2969	986	1728	6378	1638	18312
Ø 2009	536	12283	6077	8643	10660	3158	999	1846	6723	1723	18682
2009											
IX	540	12460	6034	8563	11647	3231	998	1868	6903	1802	18745
X	543	12314	6025	8491	10823	3192	984	1839	6826	1802	18758
XI	535	12345	6079	8480	10664	3236	981	1815	6717	1781	18625
XII	525	11180	5935	8327	10147	3203	976	1844	6579	1512	17987
2010											
I	526	12502	6073	8409	10224	3202	995	1861	6655	1654	18420
II	518	12340	6059	8363	10293	3208	989	1786	6701	1646	17728
III	518	12287	5992	8391	10231	3203	985	1856	6639	1650	17863
IV <sup>1)</sup>	402	10310	5010	6708	10559	2920	620	1220	6130	1223	16998
V	412	10330	5080	6730	10821	2935	635	1233	6220	1238	16738
VI	428	10635	5095	6980	11801	2955	650	1255	6340	1248	15630
VII	418	10985	5085	7005	12370	2990	684	1249	6380	1230	15930
VIII	416	10838	5050	6950	11939	2935	650	1238	6228	1290	15980
IX	436	10741	5015	6921	10222	2939	640	1228	6130	1288	16163
X	451	10651	5022	6791	9647	2961	640	1260	6116	1255	16356
XI	453	10610	4959	6871	9479	2959	632	1231	6088	1280	16229

/nastavak/

/ continued /

	Opštine / Municipalities										
	Plav	Plužine	Pljevlja	Podgorica	Rožaje	Tivat	Ulcinj	Herceg Novi	Cetinje	Šavnik	
Ø 2006	1470	913	7233	53103	3292	2940	3994	10130	4545	279	
Ø 2007	1425	952	7100	56118	3148	3632	3873	11149	4890	291	
Ø 2008	1411	938	7286	61032	3064	3755	4185	11763	4396	296	
Ø 2009	1403	937	7284	64736	3187	4129	4400	12254	4197	295	
2009											
IX	1431	953	7327	65469	3199	4292	4465	12474	4218	317	
X	1427	948	7331	65588	3211	4191	4431	12214	4230	300	
XI	1424	931	7295	65360	3240	4186	4393	12093	4262	294	
XII	1419	907	6982	64789	3068	3999	4303	11744	4142	291	
2010											
I	1429	912	7194	64249	3122	4060	4347	11921	4246	300	
II	1426	893	7123	64562	3162	4011	4344	11893	4214	298	
III	1419	901	7113	64600	3142	3986	4357	11605	4227	298	
IV <sup>1)</sup>	1110	588	5930	63998	2780	3160	3980	10680	3592	293	
V	1198	570	5890	64336	2732	3188	3960	10688	3540	242	
VI	1138	548	5990	64232	2718	3200	3890	10730	3520	238	
VII	1108	558	5660	64114	2710	3210	3980	10830	3510	218	
VIII	1103	568	5585	63810	2708	3166	3998	10330	3543	210	
IX	1093	544	5618	64513	2727	3111	3912	10577	3552	200	
X	1044	530	5682	65865	2697	3078	3890	10310	3502	170	
XI	1049	531	5701	65956	2677	3065	3921	10308	3511	202	

<sup>1)</sup> Vidi metodološka objašnjenja na strani 47<sup>1)</sup> See methodological explanation on page 47

NEZAPOSLENA LICA<sup>1)</sup> / *NEMPLOYED PERSONS*<sup>1)</sup>

	Stanje krajem perioda / <i>Situation at the end of the period</i>						U toku perioda / <i>In the middle of the period</i>		
	lica koja traže zaposlenje <sup>2)</sup> ukupno <i>Persons looking for job Total</i>	nezaposlena lica koja prvi put traže zaposlenje <i>Unemployed persons first time looking for job</i>	nezaposlena lica bez kvalifikacija <i>Unqualified unemployed persons</i>	lica koja primaju novčanu naknadu <sup>3)</sup> <i>Persons receiving unemployment benefits</i>	nezaposlene žene <i>unemployed women</i>		prijavilo se za zapošljavanje <sup>4)</sup> <i>Reported for employment</i>	zaposleni prema evidenciji Zavoda za zapošljavanje Crne Gore <i>Employees according to the records of Employment Agency of Montenegro</i>	prestanak vođenja evidencije <sup>5)</sup> <i>Records stopped to be kept</i>
					Svega <i>Total</i>	bez kvalifikacija <i>Unqualified</i>			
Ø 2006	43190	14855	11550	7833	19949	4720	2630	1955	3581
Ø 2007	34396	10069	8838	8654	15513	3414	2187	2658	2911
Ø 2008	29514	7375	7823	9507	13193	2925	2090	2261	2386
Ø 2009	28387	6382	7392	12451	12756	2757	2102	1228	2038
Ø I - XI 2009	28225	6360	7375	12455	12670	2754	2075	1268	2042
Ø I - XI 2010	31842	6851	7780	13257	14260	2834	2160	1155	2084
2009									
XI	29607	6651	7429	12975	13596	2776	2426	891	1669
XII	30169	6618	7573	12408	13704	2786	2393	787	1993
2010									
I	31055	6550	7792	13102	13986	2857	2113	549	1440
II	32375	6757	8102	12499	14431	2958	2676	534	1417
III	33117	6908	8277	13849	14705	3033	2581	511	1821
IV	33188	7034	8253	13569	14724	3021	2157	906	2185
V	32377	6957	7981	13793	14352	2890	1716	1271	2661
VI	31324	6751	7694	13548	13902	2771	1790	1856	2870
VII	31118	6670	7520	13138	13942	2728	1908	1718	2233
VIII	30595	6586	7303	13137	13808	2643	1455	927	2336
IX	31016	6914	7319	12883	14043	2670	2447	1216	2167
X	31900	7055	7606	12897	14438	2781	2701	1664	1863
XI	32199	7174	7730	13408	14531	2824	2213	1553	1931
<b>I- X 2010/I- X 2009</b>	112.8	107.7	105.5	106.4	112.5	102.9	104.1	91.1	102.1

<sup>1)</sup> SOURCE: Employment Agency of Montenegro

<sup>1)</sup> IZVOR: Zavod za zapošljavanje Crne Gore

<sup>2)</sup> Shodno članu 4 Zakona o zapošljavanju („Sl.list RCG”, br. 5/02 )

<sup>3)</sup> Shodno članu 48 Zakona o zapošljavanju

<sup>4)</sup> Nezaposlene osobe koje su se tokom izvještajnog mjeseca prijavile na evidenciju Zavoda za zapošljavanje

<sup>5)</sup> Shodno članu 86 Zakona o zapošljavanju

<sup>2)</sup> According to the article 4 of the Law on Employment („Official Gazette of RoM”, No. 5/02 and 79/04)

<sup>3)</sup> According to the Article 48 of the Law on Employment

<sup>4)</sup> Unemployed persons who in the reference month reported to the records of the Employment Agency of Montenegro

<sup>5)</sup> According to the Article 86 of the Law on Employment

**PROSJEČNE ZARADE (BRUTO) PO SEKTORIMA DJELATNOSTI**  
**AVERAGE GROSS WAGES BY ACTIVITY SECTORS**

u EUR	Ukupno <i>Total</i>	PO SEKTORIMA / BY ACTIVITY SECTORS							in EUR
		poljoprivreda, šumarstvo i vodoprivreda <i>Agriculture, forestry and water supply</i>	ribarstvo <i>Fishing</i>	vadenje ruda i kamena <i>Mining and quarrying</i>	prerađivačka industrija <i>Manufacturing</i>	proizvodnja električne energije <i>Electricity supply</i>	građevinarstvo <i>Construction</i>	trgovina na veliko i malo, opravka <i>Wholesale and retail trade, repair</i>	
Ø 2007	497	446	196	725	530	701	430	301	
Ø 2008	609	584	197	833	615	783	519	345	
Ø 2009	643	682	213	776	613	829	554	375	
Ø I - XI 2009	642	682	209	767	610	827	555	375	
Ø I - XI 2010	710	842	256	964	691	1019	613	434	
2009									
XI	633	681	199	794	596	834	524	369	
XII	653	684	253	869	639	849	543	374	
2010									
I	702	929	346	1030	664	976	613	416	
II	691	858	333	1057	658	1011	634	449	
III	693	769	301	852	674	979	624	439	
IV	693	821	348	880	662	1000	579	419	
V	727	836	190	940	642	1264	567	432	
VI	706	832	148	911	697	998	595	418	
VII	696	867	212	977	656	969	600	422	
VIII	752	828	248	925	705	1020	641	481	
IX	717	851	205	1033	724	1018	618	451	
X	711	875	272	981	769	989	657	440	
XI	716	807	155	967	766	984	602	413	
<b>I - XI 2010/I - XI 2009</b>	<b>110.6</b>	<b>123.5</b>	<b>122.5</b>	<b>125.7</b>	<b>113.3</b>	<b>123.2</b>	<b>110.5</b>	<b>115.7</b>	

/nastavak/

/ continued /

	PO SEKTORIMA / BY ACTIVITY SECTORS							
	hoteli i restorani <i>Hotels and restaurants</i>	saobraćaj, skladištenje i veze <i>Transport, storage and communications</i>	finansijsko posredovanje <i>Financial activities</i>	aktivnosti u vezi s nekretninama <i>Real estate activities, renting</i>	državna uprava i obav. socijalno osiguranje <i>Public administration and social insurance</i>	obrazo- vanje <i>Education</i>	zdravstveno i socijalno osiguranje <i>Health and social work</i>	ostale komunalne, društvene i lične usluge <i>Other community, social &amp; personal service activities</i>
Ø 2007	388	659	1156	438	506	433	427	431
Ø 2008	445	757	1268	531	669	570	576	532
Ø 2009	455	848	1248	571	673	595	655	562
Ø I - XI 2009	455	844	1243	571	674	594	654	563
Ø I - XI 2010	535	928	1314	641	687	643	690	615
2009								
XI	447	860	1236	515	659	599	653	543
XII	454	885	1300	563	658	602	662	548
2010								
I	522	862	1276	606	691	606	680	599
II	540	876	1184	623	661	609	663	563
III	557	866	1267	616	683	637	676	578
IV	562	864	1283	634	678	639	676	625
V	524	1096	1359	632	676	643	681	592
VI	526	908	1411	655	680	645	685	602
VII	510	909	1406	691	676	624	688	612
VIII	558	965	1237	647	773	724	790	632
IX	555	993	1337	654	676	648	687	612
X	525	898	1238	648	677	649	678	665
XI	498	989	1427	636	678	652	677	672
<b>I - XI 2010/I - XI 2009</b>	<b>117.6</b>	<b>110.0</b>	<b>105.7</b>	<b>112.3</b>	<b>101.9</b>	<b>108.2</b>	<b>105.5</b>	<b>109.2</b>



**PROSJEČNE ZARADE BEZ POREZA I DOPRINOSA (NETO) PO SEKTORIMA DJELATNOSTI**  
**AVERAGE WAGES WITHOUT TAXES AND CONTRIBUTIONS (NET) BY ACTIVITY SECTOR**

u EUR	Ukupno <i>Total</i>	PO SEKTORIMA / BY ACTIVITY SECTORS							in EUR
		poljoprivreda, šumarstvo i vodoprivreda <i>Agriculture, forestry and water supply</i>	ribarstvo <i>Fishing</i>	vađenje ruda i kamena <i>Mining and quarrying</i>	preradiivačka industrija <i>Manufacturing</i>	proizvodnja elekt. energije <i>Electricity supply</i>	građevni- narstvo <i>Construction</i>	trgovina na veliko i malo, opravka <i>Wholesale and retail trade, repair</i>	
Ø 2007	338	305	140	493	358	469	295	208	
Ø 2008	416	398	141	574	418	530	353	242	
Ø 2009	463	485	159	558	441	593	400	273	
Ø I - XI 2009	462	485	156	552	439	592	400	273	
Ø I - XI 2010	476	564	172	646	463	683	411	291	
2009									
XI	456	485	149	572	430	598	378	269	
XII	470	488	189	625	462	607	392	272	
2010									
I	471	622	232	690	445	654	411	279	
II	463	575	223	709	441	678	425	301	
III	465	516	202	572	451	656	418	294	
IV	465	550	233	590	444	670	388	281	
V	487	560	127	630	430	847	380	290	
VI	473	557	99	611	467	669	399	280	
VII	466	580	142	655	440	650	402	283	
VIII	504	554	166	620	473	683	430	322	
IX	481	570	137	692	486	682	414	302	
X	477	587	182	658	515	663	440	295	
XI	480	541	104	649	514	660	404	277	
<b>I - XI 2010/I - XI 2009</b>	<b>103.0</b>	<b>116.3</b>	<b>110.3</b>	<b>117.0</b>	<b>105.5</b>	<b>115.4</b>	<b>102.8</b>	<b>106.6</b>	

/nastavak/

/ continued /

	PO SEKTORIMA / BY ACTIVITY SECTORS							
	hoteli i restorani <i>Hotels and restaurants</i>	saobraćaj, skladištenje i veze <i>Transport, storage and communica- tions</i>	finansijsko posredovanje <i>Financial activities</i>	aktivnosti u vezi s nekretninama <i>Real estate activities, renting</i>	državna uprava i obav. socijalno osiguranje <i>Public administration and social insurance</i>	obrazovanje <i>Education</i>	zdravstveno i socijalno osiguranje <i>Health and social work</i>	ostale komunalne, društvene i lične usluge <i>Other community, social &amp; personal service activities</i>
Ø 2007	264	439	770	299	344	295	296	296
Ø 2008	307	513	854	363	454	388	395	370
Ø 2009	330	607	891	412	483	428	473	405
Ø I - XI 2009	330	604	888	412	484	427	473	406
Ø I - XI 2010	359	622	883	430	460	431	462	412
2009								
XI	324	617	884	371	473	431	471	393
XII	329	635	929	406	473	434	478	397
2010								
I	351	578	858	407	463	407	456	401
II	363	587	795	418	443	408	445	378
III	375	580	850	413	458	427	453	388
IV	378	579	862	425	454	428	453	419
V	352	734	913	424	453	431	457	397
VI	354	609	948	439	456	432	459	403
VII	343	609	944	463	453	418	461	410
VIII	375	647	831	434	518	485	530	423
IX	373	666	899	438	453	435	461	410
X	352	602	831	435	454	435	455	446
XI	334	663	956	427	455	437	455	450
<b>I-XI 2010/I - XI 2009</b>	<b>108.8</b>	<b>103.0</b>	<b>99.4</b>	<b>104.4</b>	<b>95.0</b>	<b>100.9</b>	<b>97.7</b>	<b>101.5</b>

**INDEKSI PROSJEČNIH ZARADA (BRUTO) PO SEKTORIMA DJELATNOSTI**  
**INDICES OF AVERAGE GROSS WAGES BY ACTIVITY SECTOR**  
**Ø 2009=100**

	Ukupno <i>Total</i>	PO SEKTORIMA / <i>BY ACTIVITY SECTORS</i>						
		poljoprivreda, šumarstvo i vodoprivreda <i>Agriculture, forestry and water supply</i>	ribarstvo <i>Fishing</i>	vadenje ruda i kamena <i>Mining and quarrying</i>	prerađivačka industrija <i>Manufacturing</i>	proizvodnja električne energije <i>Electricity supply</i>	građevni- narstvo <i>Construction</i>	trgovina na veliko i malo, opravka <i>Wholesale and retail trade, repair</i>
Ø 2007	81.6	76.4	99.5	87.0	86.2	89.5	82.9	87.2
Ø 2008	89.8	82.1	88.7	102.9	94.8	89.4	88.2	88.6
Ø 2009	100.0	100.0	100.0	100.0	100.0	100.0	100.0	100.0
Ø I - XI 2009	99.8	100.0	98.1	98.8	99.5	99.8	100.2	100.0
Ø I - XI 2010	110.4	123.5	120.2	124.2	112.7	122.9	110.6	115.7
2009								
XI	98.4	99.8	93.4	102.3	97.2	100.6	94.6	98.4
XII	101.5	100.3	118.8	112.0	104.2	102.4	98.0	99.7
2010								
I	109.2	136.2	162.4	132.7	108.3	117.7	110.6	110.9
II	107.5	125.8	156.3	136.2	107.3	121.9	114.4	119.7
III	107.8	112.8	141.3	109.8	109.9	118.1	112.6	117.1
IV	107.8	120.4	163.4	113.4	108.0	120.6	104.5	111.7
V	113.1	122.6	89.2	121.1	104.7	152.5	102.3	115.2
VI	109.8	122.0	69.5	117.4	113.7	96.1	107.4	111.5
VII	108.2	127.1	99.5	125.9	106.7	118.0	108.3	112.5
VIII	117.0	121.4	116.4	119.2	115.0	123.0	115.7	128.3
IX	111.5	124.8	96.2	133.1	118.1	122.8	111.6	120.3
X	110.6	128.3	127.7	126.4	125.4	119.3	118.6	117.3
XI	111.4	118.3	72.8	124.6	125.0	118.7	108.7	110.1
<b>I- XI 2010/I- XI 2009</b>	<b>110.6</b>	<b>123.5</b>	<b>122.5</b>	<b>125.7</b>	<b>113.3</b>	<b>123.2</b>	<b>110.5</b>	<b>115.7</b>

/nastavak/

/ continued /

	PO SEKTORIMA / <i>BY ACTIVITY SECTORS</i>							
	hoteli i restorani <i>Hotels and restauran ts</i>	saobraćaj, skladištenje i veze <i>Transport, storage and communications</i>	finansijsko posredovanje <i>Financial activities</i>	aktivnosti u vezi s nekretninama <i>Real estate activities, renting</i>	državna uprava i obav. socijalno osiguranje <i>Public administration and social insurance</i>	obrazo- vanje <i>Education</i>	zdravstveno i socijalno osiguranje <i>Health and social work</i>	ostale komunalne, društvene i lične usluge <i>Other community, social &amp; personal service activities</i>
Ø 2007	87.2	87.1	91.2	82.5	75.6	76.0	74.1	81.0
Ø 2008	93.0	84.5	95.8	88.1	94.0	90.6	83.5	91.4
Ø 2009	100.0	100.0	100.0	100.0	100.0	100.0	100.0	100.0
Ø I - XI 2009	100.0	99.5	99.6	100.0	100.1	99.8	99.8	100.2
Ø I - XI 2010	117.6	109.4	105.7	112.3	102.1	108.1	105.3	109.4
2009								
XI	98.2	101.4	99.1	90.2	97.9	100.7	99.7	96.6
XII	99.8	104.3	104.2	98.6	97.8	101.2	101.7	97.5
2010								
I	114.7	101.6	102.2	106.1	102.7	101.8	103.8	106.6
II	118.7	103.3	94.9	109.1	98.2	102.3	102.2	100.2
III	122.4	102.1	101.5	107.9	101.5	107.1	103.2	102.8
IV	123.5	101.9	102.8	111.0	100.7	107.4	103.2	111.2
V	115.2	129.2	108.9	110.7	100.4	108.1	104.0	105.3
VI	115.6	107.1	113.1	114.7	101.0	108.4	104.6	107.1
VII	112.1	107.2	112.7	121.0	100.4	104.9	105.0	108.9
VIII	122.6	113.8	99.1	113.3	114.8	121.7	120.6	112.5
IX	122.0	117.1	107.1	114.5	100.4	108.9	104.9	108.9
X	115.4	105.9	99.2	113.5	100.6	109.1	103.5	118.3
XI	109.5	116.6	114.3	111.4	100.7	109.6	103.4	119.6
<b>I- XI 2010/I- XI 2009</b>	<b>117.6</b>	<b>110.0</b>	<b>105.7</b>	<b>112.3</b>	<b>101.9</b>	<b>108.2</b>	<b>105.5</b>	<b>109.2</b>

**INDEKSI PROSJEČNIH ZARADA BEZ POREZA I DOPRINOSA (NETO) PO SEKTORIMA DJELATNOSTI**  
**INDICES OF AVERAGE WAGES WITHOUT TAXES AND CONTRIBUTIONS (NET) BY ACTIVITY SECTOR**

Ø 2009=100

	Ukupno <i>Total</i>	PO SEKTORIMA / BY ACTIVITY SECTORS						
		poljoprivreda, šumarstvo i vodoprivreda <i>Agriculture, forestry and water supply</i>	ribarstvo <i>Fishing</i>	vadenje ruda i kamena <i>Mining and quarrying</i>	prerađivačka industrija <i>Manufacturing</i>	proizvodnja električne energije <i>Electricity supply</i>	građevinarstvo <i>Construction</i>	trgovina na veliko i malo opravka <i>Wholesale and retail trade, repair</i>
Ø 2007	81.3	76.6	99.3	85.9	85.6	88.5	83.6	86.0
Ø 2008	89.8	82.1	88.7	102.9	94.8	89.4	88.2	88.6
Ø 2009	100.0	100.0	100.0	100.0	100.0	100.0	100.0	100.0
Ø I - XI 2009	99.8	100.0	98.1	98.9	99.5	99.8	100.0	100.0
Ø I - XI 2010	102.8	116.3	108.2	115.8	105.0	115.2	102.8	106.6
2009								
XI	98.5	100.0	93.7	102.3	97.5	100.8	94.5	98.5
XII	101.5	100.0	118.9	112.0	104.8	102.4	98.0	99.6
2010								
I	101.7	128.2	145.9	123.7	100.9	110.3	102.8	102.2
II	99.1	118.6	140.3	127.1	100.0	114.3	106.3	110.3
III	100.4	106.4	127.0	102.5	102.3	110.6	104.5	107.7
IV	100.4	113.4	146.5	105.7	100.7	113.0	97.0	102.9
V	105.2	115.5	79.9	112.9	97.5	142.8	95.0	106.2
VI	102.2	114.8	62.3	109.5	105.9	112.8	99.7	102.6
VII	100.6	119.6	89.3	117.4	99.8	109.6	100.5	103.7
VIII	108.9	114.2	104.4	111.1	107.3	115.2	107.5	117.9
IX	103.9	117.5	86.2	124.0	110.2	115.0	103.5	110.6
X	103.0	121.0	114.5	117.9	116.8	111.8	110.0	108.1
XI	103.7	111.5	65.4	116.3	116.6	111.3	101.0	101.5
<b>I - XI 2010/I-XI 2009</b>	<b>103.0</b>	<b>116.3</b>	<b>110.3</b>	<b>117.0</b>	<b>105.5</b>	<b>115.4</b>	<b>102.8</b>	<b>106.6</b>

/nastavak/

/ continued /

	PO SEKTORIMA / BY ACTIVITY SECTORS							
	hoteli i restorani <i>Hotels and restaurants</i>	saobraćaj, skladištenje i veze <i>Transport, storage and communications</i>	finansijsko posred. <i>Financial activities</i>	aktivnosti u vezi s nekretninama <i>Real estate activities, renting</i>	državna uprava i obav. socijalno osiguranje <i>Public administration and social insurance</i>	obrazovanje <i>Education</i>	zdravstveno i socijalno osiguranje <i>Health and social work</i>	ostale komunalne, društvene i lične usluge <i>Other community, social &amp; personal service activities</i>
Ø 2007	86.0	85.6	90.2	82.4	75.8	76.0	74.9	80.0
Ø 2008	93.0	84.5	95.8	88.1	94.0	90.7	83.5	91.4
Ø 2009	100.0	100.0	100.0	100.0	100.0	100.0	100.0	100.0
Ø I - XI 2009	100.0	99.5	99.7	100.0	100.2	99.8	100.0	100.2
Ø I - XI 2010	108.8	102.5	99.1	104.4	95.2	100.7	97.7	101.7
2009								
XI	98.2	101.6	99.2	90.0	97.9	100.7	99.6	97.0
XII	99.7	104.6	104.3	98.5	97.9	101.4	101.1	98.0
2010								
I	106.4	95.2	96.3	98.8	95.9	95.1	96.4	99.0
II	110.0	96.7	89.2	101.5	91.7	95.3	94.1	93.3
III	113.6	95.5	95.4	100.2	94.8	99.8	95.8	95.8
IV	114.5	95.4	96.7	103.2	94.0	100.0	95.8	103.5
V	106.7	120.9	102.5	102.9	93.8	100.7	96.6	98.0
VI	107.3	100.3	106.4	106.5	94.4	100.9	97.0	99.5
VII	103.9	100.3	105.9	112.4	93.8	97.7	97.5	101.2
VIII	113.6	106.6	93.3	105.3	107.2	113.3	112.1	104.4
IX	113.0	109.7	100.9	106.3	93.8	101.6	97.5	101.2
X	106.7	99.2	93.3	105.6	94.0	101.6	96.2	110.1
XI	101.2	109.22	107.3	103.6	94.2	102.1	96.2	111.1
<b>I - XI 2010/I-XI 2009</b>	<b>108.8</b>	<b>103.0</b>	<b>99.4</b>	<b>104.4</b>	<b>95.0</b>	<b>100.9</b>	<b>97.7</b>	<b>101.5</b>

## PROSJEČNE ZARADE (BRUTO) PO OPŠTINAMA / AVERAGE GROSS WAGES BY MUNICIPALITY

u EUR	Opštine / Municipalities											in EUR
	Andrijevica	Bar	Berane	Bijelo Polje	Budva	Danilovgrad	Žabljak	Kolašin	Kotor	Mojkovac	Nikšić	
Ø 2007	398	445	407	406	536	419	398	437	498	422	555	
Ø 2008	492	545	531	517	642	514	539	552	612	530	642	
Ø 2009	531	563	561	531	626	533	583	605	671	571	621	
Ø I - XI 2009	528	562	559	531	625	535	577	602	671	571	617	
Ø I - XI 2010	623	619	594	581	720	566	640	639	694	630	700	
2009												
XI	531	571	557	529	591	501	622	605	656	597	607	
XII	562	565	580	532	628	515	646	634	672	578	663	
2010												
I	635	617	635	571	755	564	609	636	738	610	736	
II	599	613	576	556	731	566	613	653	711	603	722	
III	600	594	587	573	717	595	604	657	678	626	709	
IV	608	588	607	577	730	565	662	662	666	535	641	
V	608	619	585	587	714	582	701	604	691	655	708	
VI	572	615	580	570	691	531	622	644	706	628	633	
VII	628	611	584	563	658	536	600	596	686	619	691	
VIII	719	675	653	645	728	622	682	700	715	650	729	
IX	662	651	582	575	754	559	657	632	674	694	703	
X	621	620	583	589	739	527	649	619	690	634	707	
XI	617	612	575	581	713	576	636	623	696	673	719	
I - XI 2010/I - XI 2009	118.0	110.1	106.3	109.4	115.2	105.8	110.9	106.1	103.4	110.3	113.5	

/nastavak/

/continued/

	Opštine / Municipalities									
	Plav	Plužine	Pljevlja	Podgorica	Rožaje	Tivat	Ulcinj	Herceg Novi	Cetinje	Šavnik
Ø 2007	376	444	492	548	456	486	354	408	366	420
Ø 2008	493	549	614	676	561	575	460	499	442	526
Ø 2009	537	654	667	727	606	639	488	504	573	546
Ø I - XI 2009	534	654	668	726	604	633	486	507	574	544
Ø I - XI 2010	591	783	798	785	655	760	552	565	611	613
2009										
XI	547	791	645	710	616	661	481	487	563	552
XII	564	655	655	736	621	708	511	475	563	573
2010										
I	583	923	699	774	654	779	493	496	618	581
II	583	704	725	749	646	740	532	538	611	598
III	598	667	731	758	655	719	558	550	627	615
IV	578	720	763	783	654	755	513	537	601	627
V	585	836	803	823	648	774	590	539	637	643
VI	579	774	775	801	651	736	541	596	585	601
VII	564	901	779	783	637	734	566	542	601	585
VIII	660	729	802	838	689	748	596	641	626	648
IX	602	820	776	783	652	791	550	635	598	626
X	587	857	939	765	650	826	576	598	597	604
XI	586	839	961	782	664	770	546	545	621	608
I - XI 2010/I - XI 2009	110.7	119.7	119.5	108.1	108.4	120.1	113.6	111.4	106.4	112.7

**PROSJEČNE ZARADE BEZ POREZA I DOPRINOSA (NETO) PO OPŠTINAMA**  
**AVERAGE WAGES WITHOUT TAXES AND CONTRIBUTIONS (NET) BY ACTIVITY SECTOR**

u EUR	Opštine / Municipalities											in EUR
	Andrijevica	Bar	Berane	Bijelo Polje	Budva	Danilovgrad	Žabljak	Kolašin	Kotor	Mojkovac	Nikšić	
Ø 2007	271	302	278	277	361	285	272	296	339	288	377	
Ø 2008	336	371	361	353	439	352	368	376	419	361	439	
Ø 2009	382	405	404	383	451	384	420	435	484	411	448	
Ø I - XI 2009	380	405	403	383	451	385	415	433	484	410	445	
Ø I - XI 2010	417	415	398	389	483	379	429	428	465	422	469	
2009												
XI	383	412	401	382	429	361	447	435	473	430	439	
XII	404	408	419	385	455	372	465	456	485	416	478	
2010												
I	425	413	425	383	507	378	408	426	494	409	493	
II	402	411	386	373	490	380	411	438	476	404	483	
III	402	398	394	384	483	399	405	440	454	419	476	
IV	407	394	407	387	491	379	444	443	446	358	430	
V	407	414	392	394	479	391	470	405	463	439	474	
VI	383	413	389	382	464	356	417	432	473	421	424	
VII	422	410	392	377	442	360	402	400	460	415	463	
VIII	482	453	437	432	489	417	457	469	480	436	488	
IX	444	436	390	386	506	374	440	423	452	465	471	
X	416	416	391	395	496	354	435	415	462	426	474	
XI	414	410	385	389	478	386	426	418	466	451	482	
<b>I - XI 2010/I - XI 2009</b>	109.7	102.5	98.8	101.6	107.1	98.4	103.4	98.8	96.1	102.9	105.4	

/nastavak/

/ continued /

	Opštine / Municipalities									
	Plav	Plužine	Pljevlja	Podgorica	Rožaje	Tivat	Ulcinj	Herceg Novi	Cetinje	Šavnik
Ø 2007	255	301	334	371	310	331	243	281	251	285
Ø 2008	332	377	420	460	382	392	315	344	300	358
Ø 2009	386	469	479	522	436	460	353	364	413	393
Ø I - XI 2009	385	469	480	521	435	456	351	366	414	391
Ø I - XI 2010	396	525	535	526	439	510	370	379	409	411
2009										
XI	394	566	465	509	443	475	348	352	405	398
XII	406	470	472	529	447	512	368	344	405	413
2010										
I	390	618	469	519	438	522	331	332	414	389
II	391	472	486	502	433	496	357	360	410	401
III	401	447	489	508	439	482	374	368	420	412
IV	387	483	512	525	440	507	344	360	403	420
V	392	560	538	551	435	519	396	362	427	431
VI	388	518	520	537	436	494	363	400	392	403
VII	378	603	522	525	427	492	380	363	403	392
VIII	442	488	538	562	461	501	399	430	420	434
IX	404	550	521	525	437	530	368	426	401	420
X	393	576	629	513	435	555	386	401	400	405
XI	393	562	644	524	445	516	366	364	416	407
<b>I - XI 2010/I - XI 2009</b>	102.9	111.9	111.5	101.0	100.9	111.8	105.4	103.6	98.8	105.1

**INDEKSI CIJENA PROIZVOĐAČA INDUSTRIJSKIH PROIZVODA**  
**PRODUCERS PRICE INDICES FOR INDUSTRIAL PRODUCTS**

	2008 2007	2009 2008	I-XI 2010 I-XI 2009	Ø 2009 = 100					
				2009		2010			
				XI	XII	I	II	III	IV
<b>Ukupno</b>	<b>114.0</b>	<b>96.1</b>	<b>99.1</b>	<b>99.7</b>	<b>100.4</b>	<b>97.4</b>	<b>96.7</b>	<b>96.1</b>	<b>97.6</b>
<b>Vađenje ruda i kamena</b>	<b>114.0</b>	<b>102.7</b>	<b>89.2</b>	<b>100.3</b>	<b>99.1</b>	<b>98.4</b>	<b>98.4</b>	<b>98.1</b>	<b>97.5</b>
<b>Prerađivačka industrija</b>	<b>111.3</b>	<b>90.9</b>	<b>104.3</b>	<b>100.1</b>	<b>101.2</b>	<b>100.7</b>	<b>99.7</b>	<b>98.9</b>	<b>101.1</b>
<b>Proizvodnja el. energije, gasa i vode</b>	<b>121.4</b>	<b>108.5</b>	<b>87.7</b>	<b>98.5</b>	<b>98.5</b>	<b>87.8</b>	<b>87.8</b>	<b>87.8</b>	<b>87.8</b>
<b>Vađenje ruda i kamena</b>	<b>114.0</b>	<b>102.7</b>	<b>89.2</b>	<b>100.3</b>	<b>99.1</b>	<b>98.4</b>	<b>98.4</b>	<b>98.1</b>	<b>97.5</b>
Vađenje energetskih sirovina	117.9	101.0	98.0	100.5	100.5	98.9	98.9	98.9	97.6
Vađenje kamenog uglja, lignita i treseta	117.9	101.0	98.0	100.5	100.5	98.9	98.9	98.9	97.6
Vađenje ostalih sirovina i materijala	110.9	104.0	82.4	100.0	98.1	98.1	98.1	97.4	97.4
Vađenje ruda metala	111.2	105.3	79.7	100.7	98.3	98.3	98.3	98.3	98.3
Vađenje ostalih ruda i kamena	109.9	98.1	93.7	97.1	97.1	97.1	97.1	93.7	93.7
<b>Prerađivačka industrija</b>	<b>111.3</b>	<b>90.9</b>	<b>104.3</b>	<b>100.1</b>	<b>101.2</b>	<b>100.7</b>	<b>99.7</b>	<b>98.9</b>	<b>101.1</b>
Prehrambeni proizvodi, pića i duvan	113.0	103.4	98.8	99.7	99.6	99.0	98.6	98.4	97.3
Proizv. prehrambenih proizvoda i pića	115.2	101.9	98.7	99.7	99.5	98.9	98.4	98.2	97.0
Proizvodnja duvanskih proizvoda	100.0	114.2	100.0	100.0	100.0	100.0	100.0	100.0	100.0
Proizvodnja tekstila i tekstilnih proizvoda	104.6	98.2	109.2	98.7	98.7	103.1	104.9	101.6	100.5
Proizvodnja tekstilnih prediva i tkanina	101.2	99.9	93.7	90.2	90.2	99.2	99.2	99.2	99.2
Proizvodnja odjevnih predmeta i krzna	111.1	95.0	111.6	100.0	100.0	103.7	105.8	101.9	100.7
Proizvodnja kože i predmeta od kože	101.4	104.7	100.0	100.0	100.0	100.0	100.0	100.0	100.0
Proizvodnja predmeta od kože i obuće	101.4	104.7	100.0	100.0	100.0	100.0	100.0	100.0	100.0
Prerada drveta i proizvoda od drveta	109.6	104.1	88.6	99.7	99.4	99.7	97.6	92.6	86.8
Proizvodi od drveta, plute i slično	109.6	104.1	88.6	99.7	99.4	99.7	97.6	92.6	86.8
Proizvodnja papira, izdavanje i štampanje	118.7	99.7	98.8	99.8	99.8	99.8	99.9	98.7	98.7
Proizv. celuloze, papira i proizv. od papira	100.7	101.1	99.1	99.3	99.3	99.3	99.3	99.3	99.3
Izdavanje, štampanje i reprodukcija	127.3	99.2	98.7	100.0	100.0	100.0	100.0	98.5	98.5
Prerada hemijskih proizvoda i vlakana	108.8	113.0	97.0	97.1	95.5	95.5	97.8	97.8	97.6
Proizvodnja hemikalija i hem. proizvoda	108.8	113.0	97.0	97.1	95.5	95.5	97.8	97.8	97.6
Proizvodnja proizv. od gume i plastike	103.5	104.9	100.7	100.7	100.7	100.7	100.7	100.7	100.7
Proizvodnja proizv. od gume i plastike	103.5	104.9	100.7	100.7	100.7	100.7	100.7	100.7	100.7
Proizv. proizvoda od ost. nemetalnih min.	105.8	99.0	97.3	99.9	101.3	101.3	101.3	101.3	101.3
Proizv. proizvoda od ost. nemet. minerala	105.8	99.0	97.3	99.9	101.3	101.3	101.3	101.3	101.3
Proizv. osn. metala i metalnih proizvoda	111.5	76.2	113.2	100.9	103.6	102.7	101.4	101.4	107.4
Proizvodnja osnovnih metala	112.0	73.9	114.8	100.6	103.4	102.9	101.5	101.5	108.6
Proizvodnja metal. proizv., osim mašina	101.3	110.1	91.0	105.4	105.4	101.1	99.5	99.7	91.0
Proizvodnja mašina i uređaja, ostala	98.9	99.3	83.1	99.6	99.6	99.6	81.5	81.5	81.5
Proizvodnja mašina i uređaja, ostala	98.9	99.3	83.1	99.6	99.6	99.6	81.5	81.5	81.5
Prerađivačka industrija, ostala	113.7	112.3	91.9	98.7	98.7	98.7	96.6	91.6	100.0
Proizv. namještaja i raznovrsnih proizvoda	113.7	112.3	91.9	98.7	98.7	98.7	96.6	91.6	100.0
<b>Proizvodnja el. energije, gasa i vode</b>	<b>121.4</b>	<b>108.5</b>	<b>87.7</b>	<b>98.5</b>	<b>98.5</b>	<b>87.8</b>	<b>87.8</b>	<b>87.8</b>	<b>87.8</b>
Proizv. električne energije, gasa i vode	121.4	108.5	87.7	98.5	98.5	87.8	87.8	87.8	87.8
Proizv. el. energije, gasa i vode	121.4	108.5	87.7	98.5	98.5	87.8	87.8	87.8	87.8
<b>Izabrane grupe proizvoda</b>									
<b>Elementi i materijal za ugrađivanje u građevinarstvu</b>	<b>107.0</b>	<b>107.8</b>	<b>95.8</b>	<b>103.2</b>	<b>103.3</b>	<b>102.3</b>	<b>100.8</b>	<b>98.6</b>	<b>95.2</b>

**INDEKSI CIJENA PROIZVOĐAČA INDUSTRIJSKIH PROIZVODA**  
**PRODUCERS PRICE INDICES FOR INDUSTRIAL PRODUCTS**

Ø 2009 = 100							
2010							
V	VI	VII	VIII	IX	X	XI	
<b>101.3</b>	<b>100.6</b>	<b>99.7</b>	<b>100.0</b>	<b>100.2</b>	<b>100.0</b>	<b>100.0</b>	<b>Total</b>
<b>84.2</b>	<b>84.2</b>	<b>84.2</b>	<b>84.2</b>	<b>84.2</b>	<b>84.0</b>	<b>84.0</b>	<b>Mining and quarrying</b>
<b>108.0</b>	<b>106.9</b>	<b>105.6</b>	<b>106.1</b>	<b>106.4</b>	<b>106.1</b>	<b>106.1</b>	<b>Manufacturing</b>
<b>87.8</b>	<b>87.8</b>	<b>87.8</b>	<b>87.8</b>	<b>87.8</b>	<b>87.8</b>	<b>87.8</b>	<b>Electricity, gas and water supply</b>
<b>84.2</b>	<b>84.2</b>	<b>84.2</b>	<b>84.2</b>	<b>84.2</b>	<b>84.0</b>	<b>84.0</b>	<b>Mining and quarrying</b>
97.6	97.6	97.6	97.6	97.6	97.6	97.6	Extraction of energy producing materials
97.6	97.6	97.6	97.6	97.6	97.6	97.6	Mining of coal and lignite, extraction of peat
74.0	74.0	74.0	73.9	73.9	73.6	73.6	Mining and quarr. exc. energy produc. materials
69.4	69.4	69.4	69.4	69.4	69.4	69.4	Mining of metal ores
93.7	93.7	93.7	93.4	93.5	91.8	91.8	Other mining and quarrying
<b>108.0</b>	<b>106.9</b>	<b>105.6</b>	<b>106.1</b>	<b>106.4</b>	<b>106.1</b>	<b>106.1</b>	<b>Manufacturing</b>
97.5	97.5	97.8	98.6	98.5	101.9	102.6	Manuf. of food produc., beverages and tobacco
98.1	97.2	97.5	98.4	98.3	102.2	102.9	Manufacture of food products and beverages
100.0	100.0	100.0	100.0	100.0	100.0	100.0	Manufacture of tobacco products
103.5	115.9	116.8	115.6	113.5	113.5	113.5	Manufacture of textile and textile products
99.2	95.1	91.0	89.9	89.2	89.2	89.2	Manufacture of textiles
104.1	119.1	120.8	119.5	117.2	117.2	117.2	Manufacture of wearing apparel and fur
100.0	100.0	100.0	100.0	100.0	100.0	100.0	Manufacture of leather and leather products
100.0	100.0	100.0	100.0	100.0	100.0	100.0	Manufac. of leather products and footwear
85.9	86.0	85.6	85.8	84.8	84.8	85.1	Manufacture of wood and wood products
85.9	86.0	85.6	85.8	84.8	84.8	85.1	Manufac. of wood product, cork and similar
98.7	98.6	98.6	98.6	98.5	98.4	98.5	Manufacture of paper, publishing and printing
99.3	99.1	99.1	99.1	99.1	99.1	99.1	Manufac. of pulp, paper and paper products
98.5	98.5	98.5	98.5	98.4	98.2	98.4	Publishing, printing and reproduction
97.6	97.6	97.6	97.6	97.6	97.6	97.6	Manufacture of chemical products and fibres
97.6	97.6	97.6	97.6	97.6	97.6	97.6	Manuf. of chemicals and chemical products
100.7	100.7	100.7	100.7	100.7	100.7	100.7	Manufacture of rubber and plastic products
100.7	100.7	100.7	100.7	100.7	100.7	100.7	Manufacture of rubber and plastic products
101.3	94.0	101.3	101.3	86.3	86.3	86.3	Manufacture of other non-metal minerals
101.3	94.0	101.3	101.3	86.3	86.3	86.3	Manuf. of other non-metal mineral products
122.4	120.1	117.1	117.8	118.9	116.4	116.1	Manufac. of basic metals and metal products
125.0	122.5	119.3	120.1	121.1	118.4	118.1	Manufacture of basic metals
85.8	85.8	85.8	85.8	87.3	87.3	87.3	Manuf. of metal products except machinery
81.5	81.5	81.5	81.5	81.5	81.5	81.5	Manufacture of other machinery and equipment
81.5	81.5	81.5	81.5	81.5	81.5	81.5	Manuf. of other machinery and equipment
92.5	90.6	90.0	90.0	90.0	90.0	90.0	Manufacturing n.e.c.
92.5	90.6	90.0	90.0	90.0	90.0	90.1	Manufac. of furniture and related products
<b>87.8</b>	<b>87.8</b>	<b>87.8</b>	<b>87.8</b>	<b>87.8</b>	<b>87.8</b>	<b>87.7</b>	<b>Electricity, gas and water supply</b>
87.8	87.8	87.8	87.8	87.8	87.8	87.8	Electricity, gas and water supply
87.8	87.8	87.8	87.8	87.8	87.8	87.8	Electricity, gas and water supply
							<b>Chosen groups of products</b>
93.5	93.5	93.4	93.4	93.3	93.1	93.3	<b>Elements and material for building in the construction</b>

**INDEKSI POTROŠAČKIH CIJENA PO GRUPAMA PROIZVODA**  
**RETAIL BY GROUPS OF PRODUCTS**

	2009 2008	I- XI 2010 I- XI 2009	Ø 2009 = 100					
			2009		2010			
			XI	XII	I	II	III	IV
Hleb i žitarice	102.8	99.8	100.1	99.8	99.4	99.4	99.4	99.5
Meso	106.7	100.5	100.7	100.8	100.2	100.1	100.2	100.2
Riba	104.7	109.5	107.8	107.8	109.2	109.2	110.3	110.3
Mlijeko, sir i jaja	108.7	100.3	100.5	100.7	100.1	99.9	100.0	100.2
Ulje i masti	83.6	90.5	88.0	88.0	87.2	87.4	87.4	83.9
Voće	95.7	98.7	88.0	86.9	91.5	92.9	93.6	95.4
Povrće	99.8	99.9	94.2	98.2	102.9	105.3	108.1	110.1
Šećer, med, pekmez i ost. slat.	103.1	105.7	102.1	102.5	102.6	102.6	102.8	102.9
Ostali prehrambeni proizvodi	99.7	98.2	99.4	99.3	98.5	97.9	97.7	97.9
Bezalkoholna pića	98.5	99.3	99.9	99.4	96.3	96.6	96.6	96.6
Alkoholna pića	107.3	99.3	101.3	101.4	101.6	101.6	100.1	98.9
Duvan	108.4	101.9	101.7	101.7	101.7	101.7	101.7	101.7
Materijal za odjeću	100.2	100.2	100.0	100.0	99.7	100.0	100.0	100.0
Odjeća	100.9	99.8	100.0	99.7	100.4	100.2	100.2	100.1
Ostalo za odjeću	100.8	97.5	99.9	99.8	97.3	97.3	97.3	97.3
Čišćenje i iznajmljivanje odjeće	115.8	100.1	102.1	102.1	102.2	101.3	100.4	100.4
Obuća	100.3	100.7	101.1	100.6	100.3	100.3	100.3	100.3
Popravka i iznajmljivanje obuće	102.7	101.2	100.6	100.6	101.2	101.2	101.2	101.2
Održavanje i popravke za stan	105.8	100.9	103.0	103.6	101.7	102.0	100.1	100.1
Snadbijevanje vodom	112.2	100.9	101.0	101.0	100.8	100.8	100.8	100.8
Elektr. energija, plin i ost. goriva	114.8	90.8	98.7	98.7	91.2	91.2	91.3	91.3
Namještaj i pokućstvo	90.3	94.3	95.8	95.5	95.0	95.1	94.8	94.7
Tekstilni proizvodi za kuću	101.2	104.2	100.3	99.9	104.6	104.7	104.7	104.0
Kućni aparati	98.9	95.0	96.4	95.3	96.3	96.0	95.6	95.3
Stakleno, stono posudje	99.1	94.1	99.4	98.8	96.9	96.2	95.7	95.5
Alati i oprema za kuću	99.2	96.0	98.9	98.8	97.0	96.5	96.1	96.1
Dobra i usluge za potrošnju	97.9	96.5	95.1	95.1	95.4	96.3	96.6	96.6
Zdravlje	102.7	101.8	99.7	99.7	99.5	100.8	101.3	101.9
Kupovina vozila	105.6	99.7	99.9	99.9	99.8	99.8	99.8	99.8
Oprema za održavanje vozila	89.8	117.0	110.1	110.1	112.5	111.1	115.4	117.1
Prevozne usluge	114.5	104.8	103.9	103.9	105.2	105.2	105.2	103.6
Komunikacije	103.7	100.0	100.1	100.0	100.0	100.0	100.0	100.0
Kultura i rekreacija	100.5	98.4	100.0	100.0	99.0	99.1	98.8	98.6
Obrazovanje	100.0	100.0	100.0	100.0	100.0	100.0	100.0	100.0
Restorani i hoteli	109.1	102.4	100.4	100.4	102.2	102.3	102.3	102.3
Ostala dobra i usluge	101.3	100.7	100.1	100.1	101.3	101.1	101.0	100.8



**INDEKSI POTROŠAČKIH CIJENA PO GRUPAMA PROIZVODA**  
**RETAIL BY GROUPS OF PRODUCTS**

Ø 2009 = 100							
2010							
V	VI	VII	VIII	IX	X	XI	
99.5	99.6	99.7	99.8	99.9	100.2	101.1	<i>Breads and cereals</i>
100.1	99.9	99.8	100.8	100.7	101.6	101.5	<i>Meat</i>
109.3	110.7	110.6	110.3	105.5	105.5	105.5	<i>Fish</i>
100.0	100.4	100.1	100.2	100.5	100.5	100.5	<i>Milk, cheese, eggs</i>
84.1	89.2	88.0	89.4	100.7	103.6	105.6	<i>Oils and fats</i>
101.5	108.5	115.9	111.7	104.2	94.7	88.6	<i>Fruit</i>
106.1	90.9	88.8	91.0	94.9	99.4	103.0	<i>Vegetables</i>
102.7	103.7	105.1	105.6	107.6	111.3	112.9	<i>Sugar, honey, jam, etc.</i>
97.9	97.6	98.8	98.9	98.1	98.1	99.0	<i>Other alimentary products</i>
96.5	96.7	100.4	101.3	102.7	104.8	104.7	<i>Non-alcoholic beverages</i>
98.5	98.3	98.3	98.6	98.6	98.6	98.5	<i>Alcoholic beverages</i>
101.7	101.7	101.7	101.7	101.7	101.7	101.7	<i>Tobacco</i>
100.2	100.2	100.2	100.2	100.4	100.5	100.5	<i>Material for clothes</i>
99.8	99.8	99.7	99.6	99.6	99.6	99.6	<i>Clothes</i>
97.3	97.2	98.0	98.0	97.4	97.8	97.8	<i>Other for clothes</i>
99.3	99.3	99.3	99.3	99.3	99.3	98.7	<i>Cleaning and renting of clothes</i>
100.3	100.3	100.3	100.3	101.2	101.2	101.7	<i>Footwear</i>
101.2	101.1	101.1	101.1	101.1	101.1	101.1	<i>Repairing and renting of footwear</i>
100.0	100.0	99.5	99.5	100.8	100.7	101.6	<i>Maintaince and reparation of flats</i>
100.8	100.8	100.8	100.8	100.8	100.8	100.8	<i>Water</i>
91.3	91.3	91.3	90.4	90.1	90.1	90.3	<i>Electricity, petrol, and oth. fuels</i>
94.5	94.6	94.6	94.7	94.7	94.7	94.7	<i>Furniture and household furnish.</i>
104.0	103.9	103.9	103.9	104.0	104.0	104.0	<i>Textile products for house</i>
95.0	95.0	95.0	95.0	95.2	95.2	96.0	<i>Household aparatures</i>
94.5	93.8	93.0	92.7	92.5	92.5	92.5	<i>Glass, table ware</i>
96.1	96.1	96.0	95.9	95.9	95.6	95.5	<i>Tools and equipment for house</i>
96.6	96.5	96.5	97.8	97.8	97.8	97.8	<i>Goods and services for consumpt.</i>
101.9	102.0	102.0	102.0	102.1	102.1	104.8	<i>Health care</i>
99.8	99.7	99.7	99.7	99.7	99.7	99.7	<i>Buying of vehicles</i>
117.4	117.4	117.4	117.3	116.5	116.8	116.7	<i>Equip. for maintaining of vehicles</i>
103.6	103.6	103.7	104.6	104.6	104.7	104.9	<i>Transport services</i>
100.0	100.0	100.0	100.0	100.0	100.1	100.1	<i>Communications</i>
98.4	98.3	98.3	97.9	97.7	97.7	98.2	<i>Culture and recreations</i>
100.0	100.0	100.0	100.0	100.0	100.0	100.3	<i>Education</i>
102.3	102.3	102.5	102.5	102.5	102.7	102.7	<i>Restaurants and hotels</i>
100.8	100.6	100.2	100.1	100.2	100.3	101.1	<i>Other goods and services</i>

**INDEKSI POTROŠAČKIH CIJENA /  
CONSUMER PRICES INDEX**

Ø 2009 = 100

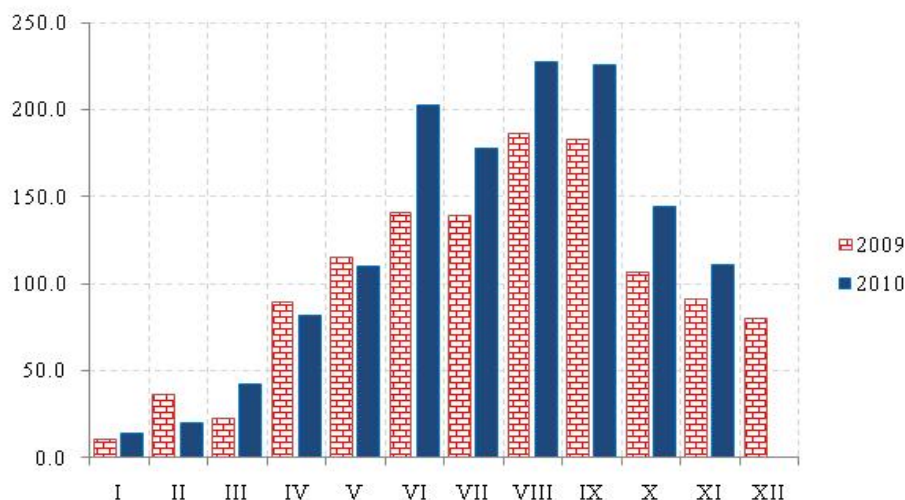
	Potrošačke cijene ukupno <i>Consumer prices-total</i>	Hrana i bezalkoholna pića <i>Food and non alcoholic beverage</i>	Alkoholna pića i duvan <i>Alcoholic beverages and tobacco</i>	Odjeća i obuća <i>Clothing and footwear</i>	Stanovanje <i>Renting</i>	Pokućstvo i oprema za kuću <i>Household furnishings</i>
2008	96.7	96.8	93.2	99.2	87.7	102.8
2009	100.0	100.0	100.0	100.0	100.0	100.0
Ø I - XI 2009	100.0	100.1	99.9	100.0	100.0	100.4
Ø I - XI 2010	100.4	100.2	100.7	100.2	93.1	96.8
2009						
XI	100.2	98.7	101.3	100.5	99.5	96.6
XII	100.3	99.1	101.3	100.2	99.6	96.1
2010						
I	100.0	99.4	101.6	100.4	93.9	96.9
II	100.1	99.7	101.7	100.2	93.9	97.0
III	100.5	100.1	101.1	100.2	93.8	96.9
IV	100.6	100.3	100.6	100.2	93.5	96.7
V	100.5	100.2	100.4	100.0	93.5	96.6
VI	100.1	99.4	100.3	100.0	93.2	96.5
VII	100.3	99.8	100.3	99.9	93.2	96.5
VIII	100.4	100.2	100.4	99.9	92.5	96.9
IX	100.5	100.6	100.4	100.2	92.4	97.0
X	100.8	101.2	100.4	100.2	92.4	96.9
XI	101.0	101.4	100.4	100.5	91.9	97.2
<b>I-XI 2010/I- XI 2009</b>	100.5	100.1	100.8	100.2	93.1	96.5

/nastavak /

/ continued /

	Zdravlje <i>Health care</i>	Prevoz <i>Transport</i>	Komunikacije <i>Communications</i>	Kultura i rekreacija <i>Culture and recreation</i>	Obrazovanje <i>Education</i>	Restorani i hoteli <i>Restaurants and hotels</i>	Ostala dobra i usluge <i>Other goods and services</i>
2008	97.4	104.4	96.4	99.5	100.0	91.6	98.7
2009	100.0	100.0	100.0	100.0	100.0	100.0	100.0
Ø I - XI 2009	100.0	99.4	100.0	100.0	100.0	100.0	100.0
Ø I - XI 2010	101.8	110.4	100.0	98.4	100.0	102.4	100.7
2009							
XI	99.7	107.0	100.1	100.0	100.0	100.4	100.1
XII	99.7	107.0	100.0	100.0	100.0	100.4	100.1
2010							
I	99.5	108.7	100.0	99.0	100.0	102.2	101.3
II	100.8	107.9	100.0	99.1	100.0	102.2	101.1
III	101.3	110.3	100.0	98.8	100.0	102.3	101.0
IV	101.9	110.7	100.0	98.6	100.0	102.3	100.8
V	101.9	110.9	100.0	98.4	100.0	102.3	100.8
VI	102.0	110.9	100.0	98.3	100.0	102.3	100.6
VII	102.0	111.0	100.0	98.3	100.0	102.5	100.2
VIII	102.0	111.2	100.0	97.9	100.0	102.5	100.1
IX	102.1	110.7	100.0	97.7	100.0	102.5	100.2
X	102.1	111.0	100.1	97.7	100.0	102.7	100.3
XI	104.8	111.0	100.1	98.2	100.3	102.7	101.1
<b>I- XI 2010/I- XI 2009</b>	101.8	111.1	100.0	98.4	100.0	102.4	100.7

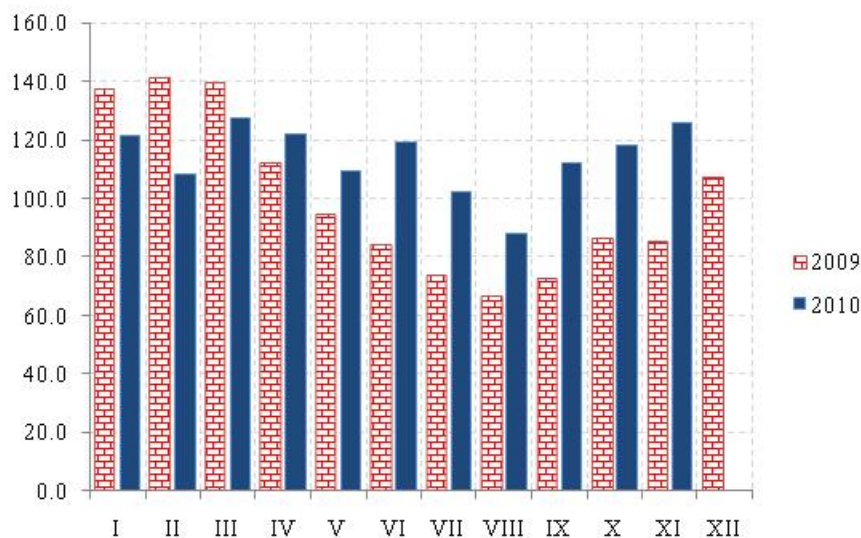
## ŠUMARSTVO / FORESTRY



Ø 2009 = 100

	Indeks Index	Ukupno Total	Proizvedeni sortimenti, m <sup>3</sup> / Production of forests assortiments						
			Četinara / Conifers				Lišćara / Deciduous trees		
			trupci Saw logs	tehničko drvo Lumber	prostorno drvo Space wood	ogrijevno drvo Firewood	trupci Saw logs	prostorno drvo Space wood	ogrijevno drvo Firewood
2005	132.3	279228	166742	10156	11521	1949	47719	7460	33510
2006	152.1	325896	194057	11808	12798	1334	46736	15406	43754
2007	122.6	263787	151440	8878	12623	367	45000	14388	31091
2008	131.9	281260	160901	13090	17492	861	46467	9655	32794
2009	100.0	216546	128520	6525	10992	2149	29121	5748	33491
Ø I -XI 2009	101.9	18346	10827	544	936	106	2575	473	2882
Ø I -XI 2010	123.4	22597	12846	918	1735	45	2948	563	3542
2009									
XI	91.4	16976	9469	609	1083	267	2171	759	2618
XII	79.7	14740	9419	501	699	985	800	544	1792
2010									
I	13.8	2337	1703	70	524	-	-	25	15
II	19.9	3170	2730	65	202	-	-	5	168
III	42.4	6970	5603	474	425	-	-	127	341
IV	81.2	13241	9744	961	1031	43	1115	137	210
V	110.3	20041	11415	828	944	91	2833	408	3522
VI	202.8	36001	21847	1346	2725	293	4471	832	4487
VII	177.8	32738	16636	879	2416	36	6613	774	5384
VIII	227.8	44046	20594	1683	3066	22	8026	1470	9185
IX	226.3	42465	23209	1791	3471	3	5278	579	8134
X	144.6	26630	15554	1114	2011	1	2679	1112	4159
XI	110.9	20923	12269	890	2270	1	1412	722	3359
<b>I- XI 2010/I- XI 2009</b>	<b>121.1</b>	<b>123.2</b>	<b>118.7</b>	<b>168.8</b>	<b>185.4</b>	<b>42.5</b>	<b>114.5</b>	<b>119.0</b>	<b>122.9</b>

INDUSTRIJA / *INDUSTRY*  
**INDEKSI INDUSTRIJSKE PROIZVODNJE – po sektorima**  
**INDICES OF INDUSTRIAL PRODUCTION – by sectors**



Ø 2009= 100

	INDUSTRIJA Ukupno <i>INDUSTRY Total</i>	Vađenje ruda i kamena <i>Mining and quarrying</i>	Prerađivačka industrija <i>Manufacturing</i>	Proizvodnja električne energije, gasa i vode <i>Electricity, gas and water supply</i>
2005	148.9	81.3	168.7	103.8
2006	150.3	242.6	168.1	106.9
2007	150.4	246.4	183.5	77.7
2008	147.5	289.9	162.9	102.4
2009	100.0	100.0	100.0	100.0
Ø I - XI 2009	99.4	104.0	100.8	96.1
Ø I - XI 2010	114.0	161.7	95.8	142.6
2009				
XI	85.0	45.6	76.0	106.3
XII	107.1	55.5	91.0	143.1
2010				
I	121.6	129.6	64.0	228.2
II	108.4	103.1	72.5	176.0
III	127.3	113.7	90.8	197.2
IV	121.9	143.5	98.5	163.2
V	109.5	96.5	92.0	143.8
VI	119.2	149.4	110.0	132.9
VII	102.2	149.8	100.5	99.8
VIII	87.7	192.5	91.1	69.3
IX	112.2	221.4	116.4	91.8
X	118.3	347.8	110.2	107.2
XI	126.1	130.8	108.4	158.8
<b>I-XI 2010/I- XI 2009</b>	<b>114.7</b>	<b>155.5</b>	<b>95.0</b>	<b>148.4</b>

**INDEKSI INDUSTRIJSKE PROIZVODNJE – po podsektorima**  
*INDICES OF INDUSTRIAL PRODUCTION – by sub-sectors*

Ø 2009 = 100

	Vadenje energetske sirovine <i>Extraction of energy producing materials</i>	Vadenje ostalih sirovina i materijala <i>Mining and quarrying except energy producing materials</i>	Prehrambeni proizvodi, pića i duvan <i>Manufacture of food products, beverages and tobacco</i>	Proizvodnja tekstila i tekstilnih proizvoda <i>Manufacture of textile and textile products</i>
2005	136.1	371.9	111.3	855.1
2006	160.0	354.9	99.9	997.1
2007	125.1	412.0	99.2	921.3
2008	175.4	446.4	112.7	735.3
2009	100.0	100.0	100.0	100.0
Ø I - XI 2009	104.1	103.9	99.1	102.5
Ø I - XI 2010	196.8	113.8	90.8	77.4
2009				
XI	58.0	28.7	82.6	52.1
XII	54.4	57.0	110.1	72.0
2010				
I	194.2	41.8	70.9	87.9
II	155.6	31.7	73.2	83.0
III	155.0	57.4	86.6	95.2
IV	190.4	79.6	86.7	68.1
V	109.6	78.7	93.8	85.3
VI	211.4	65.1	103.5	78.0
VII	215.7	60.2	112.6	57.8
VIII	237.3	131.6	112.4	67.7
IX	234.5	203.6	92.6	72.7
X	270.0	453.8	86.0	57.8
XI	191.1	48.7	80.3	97.4
<b>I- XI 2010/I- XI 2009</b>	189.0	109.5	91.6	75.5

/nastavak/

/continued/

	Proizvodnja kože i predmeta od kože <i>Manufacture of leather and leather products</i>	Prerada drveta i proizvodi od drveta <i>Manufacture of wood and wood products</i>	Proizvodnja papira, izdavanje i štampanje <i>Manufacture of paper, publishing and printing</i>	Proizvodnja hemijskih proizvoda i vlakana <i>Manufacture of chemical products and fibres</i>
2005	148.2	199.7	114.1	113.9
2006	207.3	197.7	109.5	70.8
2007	337.9	200.3	115.7	108.0
2008	729.9	152.2	107.8	70.4
2009	100.0	100.0	100.0	100.0
Ø I - XI 2009	100.7	97.9	100.8	98.7
Ø I - XI 2010	25.2	102.5	100.8	106.4
2009				
XI	-	110.6	77.2	83.1
XII	92.3	123.4	91.1	113.8
2010				
I	-	29.9	75.9	40.8
II	92.3	35.3	76.0	107.4
III	-	62.7	87.3	81.4
IV	92.3	77.1	95.5	89.8
V	-	114.2	97.2	87.9
VI	-	114.3	110.7	149.4
VII	-	117.1	121.5	72.7
VIII	-	126.0	120.9	37.4
IX	92.3	165.3	110.4	202.5
X	-	163.1	103.9	169.6
XI	-	123.1	110.0	131.8
<b>I- XI 2010/I- XI 2009</b>	25.0	104.7	100.0	107.8

**INDEKSI INDUSTRIJSKE PROIZVODNJE – po podsektorima**  
**INDICES OF INDUSTRIAL PRODUCTION – by sub-sectors**

Ø 2009 = 100

/continued/

/nastavak /

	Proizvodnja proizvoda od gume i plastičnih masa <i>Manufacture of rubber and plastic products</i>	Proizvodnja proizvoda od ostalih nemetalnih minerala <i>Manufacture of other non-metal minerals</i>	Proizvodnja osnovnih metala i metalnih proizvoda <i>Manufacture of basic metals and metal products</i>	Proizvodnja mašina i uređaja, ostala <i>Manufacture of other machinery and equipment</i>
2005	386.8	175.3	213.3	44.4
2006	269.1	177.1	223.4	100.4
2007	273.4	176.2	246.9	97.1
2008	173.6	172.4	215.0	91.6
2009	100.0	100.0	100.0	100.0
Ø I - XI 2009	99.6	99.3	102.8	98.2
Ø I - XI 2010	59.8	129.5	84.5	147.7
2009				
XI	83.5	103.5	60.4	125.3
XII	104.3	107.2	69.6	119.3
2010				
I	31.3	103.6	59.7	92.9
II	39.1	104.6	53.2	146.8
III	49.6	127.8	86.6	153.1
IV	47.0	123.4	100.0	145.8
V	70.4	129.0	82.4	116.2
VI	57.4	120.8	95.7	147.5
VII	70.4	129.3	94.4	130.8
VIII	99.1	148.5	78.4	169.8
IX	78.3	143.1	90.7	165.3
X	75.7	149.6	89.3	168.1
XI	39.1	145.4	99.0	188.6
<b>I- XI 2010/I- XI 2009</b>	<b>60.0</b>	<b>130.4</b>	<b>82.2</b>	<b>150.4</b>

/nastavak /

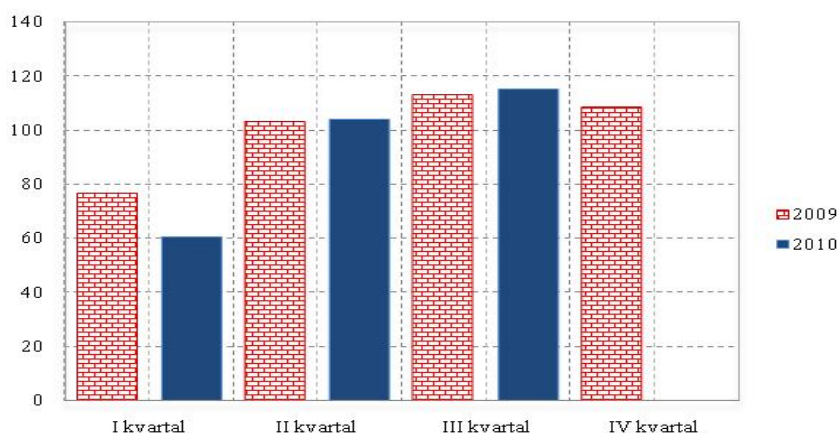
/continued/

	Proizvodnja mašina, uređaja i aparata za domaćinstvo <i>Manufacture of machines, devices and apparatus for households</i>	Proizvodnja saobraćajnih sredstava <i>Manufacture of transport equipment</i>	Prerađivačka industrija, ostala <i>Manufacturing n.e.c.</i>	Proizvodnja električne energije, gasa i vode <i>Electricity, gas and water supply</i>
2005	165.6	137.7	48.9	103.8
2006	189.4	135.8	188.9	106.9
2007	303.9	132.6	186.6	77.7
2008	100.0	113.6	194.2	102.4
2009	100.0	100.0	100.0	100.0
Ø I – XI 2009	-	101.4	98.2	96.1
Ø I - XI 2010	-	77.7	74.5	142.6
2009				
XI	-	71.6	112.6	106.3
XII	-	84.2	119.8	143.1
2010				
I	-	71.6	52.1	228.2
II	-	12.6	49.5	176.0
III	-	33.7	71.8	197.2
IV	-	54.7	90.5	163.2
V	-	96.8	85.3	143.8
VI	-	122.1	75.9	132.9
VII	-	113.7	76.4	99.8
VIII	-	80.0	79.8	69.3
IX	-	80.0	79.9	91.8
X	-	88.4	74.0	107.2
XI	-	101.1	84.4	158.8
<b>I- XI 2010/I- XI 2009</b>	<b>-</b>	<b>76.6</b>	<b>75.9</b>	<b>148.4</b>

### GRAĐEVINARSTVO / CONSTRUCTION

Vrijednost izvršenih radova u hiljadama EUR / Value of finalized construction works

Ø 2009 = 100



### VRIJEDNOST IZVRŠENIH I UGOVORENIH RADOVA, BROJ ZAPOSLENIH I IZVRŠENI EFEKTIVNI ČASOVI

VALUE OF FINALIZED AND ORDERED WORKS, NUMBER OF EMPLOYEES AND FINALIZED EFFECTIVE HOURS

	Indeks <i>Index</i>	Vrijednost izvršenih radova u hiljadama EUR <i>Value of finalized construction works</i>	Broj radnika na gradilištu na kraju izvještajnog kvartala <i>Number of workers at the construction site at the reporting quarter</i>	Indeks <i>Index</i>	Izvršeni efektivni časovi u 000 <i>Finalized effective hours in thousands</i>	
2005	32.4	73252	2343	66.2	5345	2005
2006	90.4	204248	3525	104.4	8424	2006
2007	87.5	197639	3522	102.6	8280	2007
2008	127.4	287931	4200	123.8	9994	2008
2009	100.0	225953	3665	100.0	8071	2009
2009 I kvartal	76.3	43085	3899	96.4	1946	2009 I quarter
2009 II kvartal	102.9	58136	3768	106.7	2153	2009 II quarter
2009 III kvartal	112.7	63676	3622	102.3	2065	2009 III quarter
2009 IV kvartal	108.1	61056	3370	94.6	1907	2009 IV quarter
2010 I kvartal <sup>1)</sup>	60.4*	34135*	3409*	84.7*	1708*	2010 I quarter <sup>1)</sup>
2010 II kvartal	103.6	58539	3627	97.9	1975	2010 II quarter
2010 III kvartal	114.8	64838	3633	100.1	2019	2010 III quarter
2010 IV kvartal	...	...	...	...	...	2010 IV quarter

/ nastavak/

/continued/

	Indeks <i>Index</i>	Nove narudžbe na zgradama u hilj. EUR <i>New orders on buildings, thous. EUR</i>	Indeks <i>Index</i>	Nove narudžbe na ostalim građevinama u hilj. EUR <i>New orders on other buildings, thous. EUR</i>	
2006	212.2	99327	64.3	60720	2006
2007	299.1	140006	77.9	73539	2007
2008	181.9	85145	131.9	124524	2008
2009	100.0	46816	100.0	94394	2009
2009 I kvartal	110.1	12890	50.8	11979	2009 I quarter
2009 II kvartal	17.7	2065	119.7	28260	2009 II quarter
2009 III kvartal	187.6	21960	125.8	29677	2009 III quarter
2009 IV kvartal	84.6	9901	103.7	24478	2009 IV quarter
2010 I kvartal <sup>1)</sup>	119.0*	13923*	27.0*	6371*	2010 I quarter <sup>1)</sup>
2010 II kvartal	33.0	3857	230.2	54332	2010 II quarter
2010 III kvartal	57.4	6719	77.3	18244	2010 III quarter
2010 IV kvartal	...	...	...	...	2010 IV quarter

<sup>1)</sup> Prethodni podaci

<sup>1)</sup> Preliminary data

**SPOLJNA TRGOVINA / EXTERNAL TRADE <sup>1)</sup>**  
**Izvoz i uvoz po zemljama, u hilj. EUR / Exports and imports by countries, thous EUR**

	Izvoz / Export			Uvoz / Import			
	I - XI 2009	I - XI 2010	Indeks / Index I - XI 2010 I - XI 2009	I - XI 2009	I - XI 2010	Indeks / Index I - XI 2010 I - XI 2009	
	<b>UKUPNO</b>	<b>253047.7</b>	<b>300810.2</b>	<b>118.9</b>	<b>1497710.4</b>	<b>1506530.0</b>	
<b>Evropa</b>	<b>242771.1</b>	<b>296190.5</b>	<b>122.0</b>	<b>1314290.2</b>	<b>1316974.1</b>	<b>100.2</b>	<b>Europe</b>
Albanija	5529.6	7192.2	130.1	8314.9	8460.9	101.8	Albania
Austrija	1489.4	2441.2	163.9	43740.8	46597.0	106.5	Austria
Belgija-Luxemburg	62.0	212.0	342.2	6523.0	6451.7	98.9	Belgium – Luxembourg
BiH (sa Rep. Srpskom)	15233.7	20581.9	135.1	80047.6	112949.6	141.1	B&H (with RS)
Bugarska	110.7	123.5	111.6	5423.3	5681.9	104.8	Bulgaria
Velika Britanija	1695.1	3924.5	231.5	14680.4	12065.8	82.2	Great Britain
Grčka	47781.7	53565.8	112.1	91391.7	103410.4	113.2	Greece
Danska	11.0	3.0	26.9	1852.1	2761.7	149.1	Denmark
Italija	31956.5	43101.2	134.9	94976.0	90676.9	95.5	Italy
Mađarska	11577.1	26988.3	233.1	14723.9	11514.8	78.2	Hungary
Njemačka	2305.0	2799.9	121.5	102431.7	107232.5	104.7	Germany
Slovenija	17343.9	18617.4	107.3	58488.8	53874.8	92.1	Slovenia
Poljska	319.3	881.5	276.1	10289.8	9183.7	89.3	Poland
Makedonija	1325.7	886.0	66.8	18357.0	21194.2	115.5	Macedonia
Rumunija	691.2	2430.1	351.6	17646.5	18460.0	104.6	Romania
Ruska federacija	1298.6	1594.5	122.8	19261.3	18541.6	96.3	Russian Federation
Srbija <sup>2)</sup>	69580.5	68714.0	98.8	409023.1	393689.2	96.3	Serbia
Hrvatska	8966.3	3745.7	41.8	74509.2	72937.9	97.9	Croatia
Francuska	708.2	1738.7	245.5	24374.8	24546.5	100.7	France
Holandija	4175.7	6979.7	167.2	22348.5	22935.7	102.6	Netherlands
Češka Republika	1041.0	3623.3	348.1	19124.6	13197.3	69.0	Czech Republic
Švajcarska	192.5	1975.4	1026.1	49086.8	16690.1	34.0	Switzerland
Švedska	636.5	432.5	67.9	5508.8	6026.2	109.4	Sweden
Španija	124.9	68.9	55.1	22109.0	20702.1	93.6	Spain
Turska	1150.0	4993.9	434.3	18754.6	25943.7	138.3	Turkey
Ostale zemlje	17465.3	18575.8	106.4	81302.3	91248.0	112.2	Other countries
<b>Azija</b>	<b>1875.4</b>	<b>3167.5</b>	<b>168.9</b>	<b>129059.0</b>	<b>136496.5</b>	<b>105.8</b>	<b>Asia</b>
Irak	0.0	0.0	0.0	0.3	0.0	0.0	Irak
Izrael	619.0	6.2	1.0	997.4	1129.8	113.3	Israel
Indija	0.0	0.0	0.0	3844.4	4582.3	119.2	India
Indonezija	0.0	0.0	0.0	2481.1	2436.7	98.2	Indonesia
Japan	11.9	392.5		17742.4	18589.6	104.8	Japan
Kina	22.5	47.5	210.6	80125.3	80617.0	100.6	China
Koreja	0.5	0.0	0.0	7557.7	10488.0	138.8	Korea
Tajland	0.0	0.0	0.0	3711.0	3135.7	84.5	Thailand
Hong Kong	0.0	67.4	0.0	651.1	782.2	120.1	Hong Kong
Ostale zemlje	1221.4	2653.9	217.3	11948.3	14735.3	123.3	Other countries
<b>Afrika</b>	<b>911.1</b>	<b>746.5</b>	<b>81.9</b>	<b>2410.6</b>	<b>4346.1</b>	<b>180.3</b>	<b>Africa</b>
Egipat	617.8	651.1	105.4	560.1	906.1	161.8	Egypt
Etiopija	0.0	0.0	0.0	0.2	11.5	0.0	Ethiopia
Libijska Araps.Džamah.	0.0	1.2	0.0	0.0	0.0	0.0	Libyan Arab.Jamahiriyah
Maroko	0.0	0.0	0.0	536.6	314.4	58.6	Morocco
Tunis	0.0	0.0	0.0	501.5	567.9	113.2	Tunis
Ostale zemlje	293.3	94.2	32.1	812.3	2546.3	313.5	Other countries
<b>Amerika</b>	<b>7490.0</b>	<b>532.5</b>	<b>7.1</b>	<b>51506.3</b>	<b>48126.2</b>	<b>93.4</b>	<b>America</b>
Kanada	83.4	79.8	95.8	1040.9	1107.2	106.4	Canada
Panama	0.0	0.0	0.0	3.2	15.5	486.8	Panama
SAD	7338.6	402.7	5.5	16627.6	14041.4	84.4	USA
Argentina	0.0	0.0	0.0	1307.1	1229.5	94.1	Argentina
Brazil	0.0	31.1	0.0	27161.2	26419.8	97.3	Brazil
Ekvador	0.0	0.0	0.0	3449.5	2805.7	81.3	Ecuador
Kolumbija	0.0	0.0	0.0	77.9	225.9	290.0	Columbia
Peru	0.0	0.0	0.0	41.3	49.3	119.5	Peru
Devičanska ostrva	61.2	2.8	4.6	0.0	7.2	0.0	The Virgin Islands
Ostale zemlje	6.8	16.1	236.7	1797.6	2224.7	123.8	Other countries
<b>Australija i Okeanija</b>	<b>0.2</b>	<b>173.3</b>		<b>444.2</b>	<b>587.0</b>	<b>132.1</b>	<b>Australia and Oceania</b>
Australija	0.2	40.8		148.6	254.8	171.5	Australia
Novi Zeland	0.0	0.0	0.0	279.4	328.5	117.6	New Zealand
Ostale zemlje	0.0	132.5	0.0	16.3	3.7	22.6	Other countries

<sup>1)</sup> Prethodni podaci<sup>2)</sup> Za 2009 bez podataka za Kosovo i Metohiju<sup>1)</sup> Previous data<sup>2)</sup> Without data for Kosovo and Metohia in 2009



**SPOLJNA TRGOVINA / EXTERNAL TRADE**  
**Izvoz i uvoz robe, hilj. EUR / Exports and imports of goods, thous EUR**

	Izvoz / Export			Uvoz / Import			
	I - XI 2009	I - XI 2010	Indeks / Index <u>I - XI 2010</u> I - XI 2009	I - XI 2009	I - XI 2010	Indeks / Index <u>I - XI 2010</u> I - XI 2009	
<b>Ukupno</b>	<b>253047.7</b>	<b>300810.2</b>	<b>118.9</b>	<b>1497710.4</b>	<b>1506530.0</b>	<b>100.6</b>	<b>Total</b>
Zive zivotinje	10.5	8.6	82.2	14504.1	19878.9	137.1	Live animals
Meso i drugi klanični proizvodi za jelo	2477.4	3241.1	130.8	54162.5	53984.8	99.7	Meat and edible meat offal
Ribe, ljuskari, mekušci i ostali vodeni beskičmenjaci	191.7	123.3	64.3	4797.4	5115.5	106.6	Fish and crustaceans, molluscs and other aquatic invertebrates
Mlijeko i proizvodi od mlijeka, živinska i ptičja jaja, prirodni med, jestivi proizvodi životinskog porijekla, nepomenuti niti obuhvaćeni na drugom mjestu	27.0	7.3	27.0	32233.6	34239.6	106.2	Dairy produce; birds' eggs; natural honey; edible products of animal origin, not elsewhere specified or included
Proizvodi životinjskog porijekla, na drugom mjestu nepomenuti niti obuhv.	2.5	7.3	298.7	299.2	262.9	87.8	Products of animal origin, not elsewhere specified or included
Živo drveće i druge biljke; lukovice, korijenje i slično; siječeno cvijeće i ukrasno lišće	13.8	31.3	227.4	2989.4	2680.8	89.7	Live trees and other plants; bulbs, roots and the like; cut flowers and ornamental foliage
Povrće, korijenje i krtole za jelo	3521.2	3369.4	95.7	6324.0	5840.1	92.3	Edible veg. and certain roots and tub.
Voće za jelo, uključujući jezgrasto voće; kore agruma ili dinja i lubenica	2295.2	4637.9	202.1	10738.3	10293.7	95.9	Edible fruit and nuts; peel of citrus fruits or melons
Kafa, čaj, mate čaj i začini	90.1	116.6	129.5	16560.1	23009.4	138.9	Coffee, tea, maté and spices
Žitarice	197.3	19.6	9.9	10431.5	5391.8	51.7	Cereals
Proizvodi mlinске industrije; slad; skrob; inulin; gluten od pšenice	1262.0	580.4	46.0	14658.7	15040.6	102.6	Products of the milling industry; malt; starches; inulin; wheat gluten
Uljano sjemenje i plodovi; razno zrnavlje, sjeme i plodovi; industrijsko i ljekovito bilje; slama i stočna hrana (kabasta)	179.1	116.2	64.9	1523.5	1755.1	115.2	Oil seeds and oleaginous fruits; miscel-laneous grains, seeds and fruit; industrial or medicinal plants; straw and fodd
Seljak:gume, smole i ostali biljni sokovi i ekstrakti	0.0	1.0	0.0	64.7	39.2	60.6	Lac; gums, resins and other vegetable saps and extracts
Biljni materijali za pletarstvo; biljni proiz na drugom mjestu nepomenuti niti obuh.	0.0	0.2	0.0	24.5	40.9	166.8	Vegetable plaiting materials; vegetable produc. not elsewhere specified or incl.
Masnoće i ulja životinjskog ili biljnog porijekla i proizvodi njihovog razlaganja; prerađene jestive masnoće; voskovi životinjskog i biljnog porijekla	221.8	789.5	355.9	13325.0	12647.5	94.9	Animal or vegetable fats and oils and their cleavage products; prepared edible fats; animal or vegetable waxes
Prerađevine od mesa, riba, ljuskara, mekušaca ili ostalih vodenih beskičmenjaka	3112.5	2244.6	72.1	19725.7	18566.9	94.1	Preparations of meat, of fish or of crustaceans, molluscs or other aquatic invertebrates
Šećer i proizvodi od šećera	266.0	300.7	113.1	7927.4	8126.7	102.5	Sugars and sugar confectionery
Kakao i proizvodi od kaka	13.1	2438.1		16670.7	17034.8	102.2	Cocoa and cocoa preparations
Proizvodi na bazi žitarica, brašna, skroba ili mlijeka; poslastičarski proizvodi	770.8	1701.2	220.7	23917.3	24036.5	100.5	Preparations of cereals, flour, starch or milk; pastrycooks' products
Proizvodi od povrća, voća, uključujući jezgrasto voće, i ostalih djelova bilja	708.9	1111.6	156.8	17781.7	15515.4	87.3	Preparations of vegetables, fruit, nuts or other parts of plants
Razni proizvodi za ishranu	1164.9	2718.9	233.4	22213.4	23156.6	104.2	Miscellaneous edible preparations
Pića, alkoholi i sirće	16959.6	16778.2	98.9	42949.6	42148.5	98.1	Beverages, spirits and vinegar
Ostaci i otpaci prehrambene industrije; pripremljena hrana za životinje	415.9	105.9	25.5	10840.5	12445.3	114.8	Residues and waste from the food industries; prepared animal fodder
Duvan i proizvodi zamjene duvana	455.9	68.8	15.1	19319.0	14904.2	77.1	Tobacco and manuf. tobacco substitut.
So;sumpor; zemlja i kamen;gips,kreč i cement	1777.6	2738.9	154.1	33660.2	26417.0	78.5	Salt; sulphur; earths and stone; plastering materials, lime and cement
Rude, zgure i pepeo	324.2	1847.0	569.8	168.4	131.6	78.1	Ores, slag and ash
Mineralna goriva, mineralna ulja i proizvodi njihove destilacije;bitumenozne materije; mineralni voskovi	7588.6	29550.9	389.4	185885.5	189361.7	101.9	Mineral fuels, mineral oils and products of their distillation; bitumi-nous substances; mineral waxes
Neorganski hemijski proizvodi; organska ili neorganska jedinjenja plemenitih metala, metala rijetkih zemlji, radioaktivnih elemenata i izotopa	29.0	60.3	208.1	16976.6	49193.9	289.8	Inorganic chemicals; organic or norga-nic compounds of precious metals, of rare-earth metals, of radioactive lemen-ts or of isotopes
Organski hemijski proizvodi	189.8	2441.5		5887.3	2639.7	44.8	Organic chemicals
Farmaceutski proizvodi	8383.8	6043.2	72.1	44315.5	47243.3	106.6	Pharmaceutical products
Đubriva	0.1	21.8	0.0	1837.2	2167.1	118.0	Fertilisers
Ekstrati za štavljenje ili bojenje;tanini i njihovi derivati;boje, pigmenti i ostale meterije za bojenje; boje i lakovi; kitovi i ostale zaptivne mase;mastila	148.8	312.2	209.8	19411.3	18062.9	93.1	Tanning or dyeing extracts; tannins and their derivatives; dyes, pigments and other colouring matter; paints and varnishes; putty and other mastics; inks
Eterična ulja i rezinoidi; parfimerijski, kozmetički i toaletni proizvodi	875.7	1202.2	137.3	19582.1	20317.0	103.8	Essential oils and resinoids; perfu-merly, cosmetic or toilet preparations

**SPOLJNA TRGOVINA / XTERNAL TRADE**  
**Izvoz i uvoz robe, hilj. EUR / Exports and imports of goods, thous EUR**

/ nastavak /	Izvoz / Export			Uvoz / Import			/continued /
	I - XI 2009	I - XI 2010	Indeks / Index I - XI 2010 I - XI 2009	I - XI 2009	I - XI 2010	Indeks / Index I - XI 2010 I - XI 2009	
	Sapun, organska površinska aktivna sredstva, preparati za pranje, preparati za podmazivanje, vještački voskovi, pripremljeni voskovi, preparati za poliranje i čišćenje, svijeće i slični proizvodi, paste za modelovanje "zubarski voskovi" i zubarski preparati n	118.8	154.3	129.9	16370.1	17408.3	
Bjelančevinaste materije; modifikovani skrobovi; lijepkovi; enzimi	8.0	10.1	127.0	3263.5	3242.1	99.3	Albuminoidal substances; modified starches; glues; enzymes
Eksplozivi; pirotehnički proizvodi; šibice; piroforne legure; zapaljivi preparati	703.0	540.5	76.9	440.6	495.2	112.4	Explosives; pyrotechnic products; matches; pyrophoric alloys; certain combustible preparations
Proizvodi za fotografske ili kinematografske svrhe	9.1	17.7	194.7	1099.4	802.8	73.0	Photographic or cinematographic goods
Razni proizvodi hemijske industrije	64.4	530.1	823.0	12962.8	14839.9	114.5	Miscellaneous chemical products
Plastične mase i proiz. od plastičnih masa	491.2	1074.5	218.7	45551.5	42835.0	94.0	Plastics and articles thereof
Kaučuk i proizvodi od kaučuka i gume	123.3	257.3	208.7	10990.2	13846.6	126.0	Rubber and articles thereof
Sirova sitna i krupna koža, sa dlakom ili bez dlake (osim krzna) i štavljena koža	1775.1	3702.9	208.6	149.7	140.1	93.6	Raw hides and skins (other than furskins) and leather
Proizvodi od kože, sedlarski i sarački proizvodi, predmeti za putovanje, ručne torbe i slični kontejneri i proizvodi od životinjskih crijeva (osim svilenog ketguta)	81.8	73.3	89.6	6029.6	5598.4	92.8	Articles of leather; saddlery and harness; travel goods, handbags and similar containers; articles of animal gut (other than silkworm gut)
Prirodno i vještačko krzno; proizvodi od krzna	68.2	0.0	0.0	137.8	152.6	110.8	Furskins and artificial fur; manufactures thereof
Drvo i proizvodi od drveta; drveni ugalj	12619.6	15314.3	121.4	20226.3	21758.1	107.6	Wood and artic. of wood; wood charcoal
Pluta i proizvodi od plute	0.0	0.1	0.0	686.9	595.8	86.7	Cork and articles of cork
Proizvodi od slame, esparta ili ostalih materijala za pletariju; korparskih i pletarskih proizvoda	0.3	0.9	280.1	127.3	182.9	143.7	Manufactures of straw, of esparto or of other plaiting materials; basketware and wickerwork
Celuloza od drveta ili drugih vlaknastih celuloznih materijala; hartija i karton (otpac i ostaci) za ponovnu preradu	421.6	649.0	153.9	7.1	5.5	78.4	Pulp of wood or of other fibrous cellulosic material; recovered (waste and scrap) paper or paperboard
Hartija i karton; proizvodi od hartijine pulpe, hartije ili kartona	1795.8	1652.6	92.0	24835.1	26213.3	105.5	Paper and paperboard; articles of paper pulp, of paper or of paperboard
Štampane knjige, novine, slike i ostali proizvodi grafičke industrije, rukopisi, kucani tekstovi i planovi	1835.8	1122.9	61.2	16378.9	15908.2	97.1	Printed books, newspapers, pictures and other products of the printing ind.; manuscripts, typescripts and plans
Svila	0.0	0.6	0.0	23.4	25.4	108.7	Silk
Vuna, fina ili gruba životinjska dlaka, predivo i tkanine od konjske dlake	36.1	27.1	75.2	36.9	32.5	88.2	Wool, fine or coarse animal hair; horsehair yarn and woven fabric
Pamuk	14.2	23.7	166.2	416.0	371.2	89.2	Cotton
Ostala biljna tekstilna vlakna; predivo od hartije i tkanine od prediva od hartije	0.1	0.0	0.0	15.7	18.9	120.3	Other vegetable textile fibres; paper yarn and woven fabrics of paper yarn
Vještački ili sintetički filamenti	0.1	0.7	621.3	376.2	534.1	142.0	Man-made filaments
Vještačka ili sintetička vlakna, sječena	2.7	26.4	987.1	454.0	555.4	122.3	Man-made staple fibres
Vata, filc i netkani materijal; specijalna prediva; kanapi, užad, konopci i kablovi i proizvodi od njih	13.0	7.6	58.0	1686.2	1909.3	113.2	Wadding, felt and nonwovens; special yarns; twine, cordage, ropes and cables and articles thereof
Tepisi i ostali tekstilni podni pokrivači	10.9	17.5	160.2	2381.0	2246.7	94.4	Carpets and other textile floor cover.
Specijalne tkanine; taftovani tekstilni proizv.; čipke; tapiserije; pozamanterija, vez	2.7	1.9	69.1	98.3	128.6	130.9	Special woven fabrics; tufted textile fabrics; lace; tapestries; trimmings; embroid.
Tekst. tkanine, impregnisane, premazane, prevučene, prekrivene ili laminirane, tekstilni proizvodi pogodni za tehn. svrhe	4.4	1.8	40.1	462.2	642.8	139.1	Impregnated, coated, covered or laminated textile fabrics; textile articles of a kind suitable for industrial use
Pleteni ili kukičani materijali	0.2	16.9		156.5	144.6	92.4	Knitted or crocheted fabrics
Odjeća i pribor za odjeću, pleteni ili kukičani	355.0	224.3	63.2	11460.0	12346.0	107.7	Articles of apparel and clothing accessories, knitted or crocheted
Odjeća i pribor za odjeću, osim pletenih ili kukičanih proizvoda	699.3	745.2	106.6	26683.3	25371.0	95.1	Articles of apparel and clothing accessories, not knitted or crocheted
Ostali gotovi proizvodi od tekstila; setovi, iznošena, dotrajala odjeća i dotrajali proizvodi od tekstila; krpe	40.0	84.8	212.1	4290.1	4588.6	107.0	Other made-up textile articles; sets; worn clothing and worn textile articles; rags
Obuća, kamašne i slični proizvodi; dijelovi tih proizvoda	438.0	289.6	66.1	24580.5	22226.7	90.4	Footwear, gaiters and the like; parts of such articles

**SPOLJNA TRGOVINA / EXTERNAL TRADE**  
**Izvoz i uvoz robe, hilj. EUR / Exports and imports of goods, thous EUR**

/ nastavak /	Izvoz / Export						Uvoz / Import			/ continued /
	I - XI 2009	I - XI 2010	Indeks / Index I - XI 2010 I - XI 2009	I - XI 2009	I - XI 2010	Indeks / Index I - XI 2010 I - XI 2009				
	Šeširi, kape i ost. pokrivke za glavu i djel.	22.6	14.1	62.4	479.0	664.9	138.8	Headgear and parts thereof		
Kišobrani, suncobrani, štapovi, štapovi- stolice, bičevi, korbači i njihovi dijelovi	14.4	3.4	23.3	769.9	1013.4	131.6	Umbrellas, sun umbrellas, walking-sticks, seat-sticks, whips, riding-crops and parts thereof			
Perje i paperje, preparirano i proizvodi izradjeni od perja i paperja; vještačko cvijeće; proizvodi od ljudske kose	3.6	0.2	5.9	149.2	166.0	111.3	Prepared feathers and down and arti-cles made of feathers or of down; arti-ficial flowers; articles of human hair			
Proizvodi od kamena, gipsa, cementa, betona, azbesta, liskuna ili sličnih mater.	415.9	682.8	164.2	12157.8	12753.3	104.9	Articles of stone, plaster, cement, asbestos, mica or similar materials			
Keramički proizvodi	251.2	141.0	56.1	25900.5	22419.5	86.6	Ceramic products			
Staklo i proizvodi od stakla	32.7	99.6	304.1	12202.6	12249.4	100.4	Glass and glassware			
Prirodni ili kultivisani biseri, drago ili polu- drago kamenje, plemeniti metali, metali platinirani plemenitim metalima, i proizvodi od njih; imitacije nakita; metalni novac	359.8	22.1	6.1	1230.2	1361.1	110.6	Natural or cultured pearls, precious or semi-precious stones, precious metals, metals clad with precious metal, and artic. thereof; imitation jewellery; coin			
Gvožđe i čelik	30466.7	24944.6	81.9	32358.1	28547.8	88.2	Iron and steel			
Proizvodi od gvožđa i čelika	7368.5	2831.2	38.4	55228.3	48904.9	88.6	Articles of iron or steel			
Bakar i proizvodi od bakra	2523.2	7354.4	291.5	1641.5	1895.4	115.5	Copper and articles thereof			
Nikl i proizvodi od nikla	0.0	0.0	0.0	31.8	300.0	942.9	Nickel and articles thereof			
Aluminijum i proizvodi od aluminijuma	105567.5	123743.5	117.2	20639.5	18509.5	89.7	Aluminium and articles thereof			
Olovo i proizvodi od olova	174.0	184.6	106.1	61.2	26.0	42.5	Lead and articles thereof			
Cink i proizvodi od cinka	258.6	46.9	18.1	281.1	299.8	106.7	Zinc and articles thereof			
Kalaj i proizvodi od kalaja	0.0	0.0	0.0	10.2	9.0	88.7	Tin and articles thereof			
Ostali prosti metali; kremeti; proiz. od njih	0.2	0.0	0.0	32.7	28.9	88.3	Other base metals; cermet; art. thereof			
Alati, nožarski proizvodi, kašike i viljuške, od prostih metala; njihovi dijelovi od prostih metala	220.8	174.2	78.9	4701.9	5188.0	110.3	Tools, implements, cutlery, spoons and forks, of base metal; parts thereof of base metal			
Razni proizvodi od prostih metala	859.3	583.7	67.9	6304.4	6981.7	110.7	Miscellaneous articles of base metal			
Reaktori, kotlovi, mašine i mehanički uređjaji i njihovi dijelovi	18159.9	11296.3	62.2	109309.5	115569.7	105.7	Reactors, boilers, machinery and mechanical appliances; parts ther.			
Električne mašine i oprema i njihovi dije- lovi; aparati za snimanje i reprodukciju zvuka; televizijski aparati za snimanje i reprodukciju slike i zvuk, dijelovi i pribor za te proizvode	3095.4	3443.5	111.2	96621.0	99043.4	102.5	Electrical machinery and equipment and parts thereof; sound recorders and reproducers, television image and sound recorders and reproducers, and parts and accessories of such articles			
Šinska vozila i njihovi dijelovi; željeznički i tramvajski kolosječni sklopovi i pribor i njihovi dijelovi, mehanička i elektromehanička signalna oprema za saobraćaj svih vrsta	53.2	22.6	42.4	771.0	666.9	86.5	Railway or tramway locomotives, rolling- stock and parts thereof; railway or tramway track fixtures and fittings and parts thereof; mechanical (including electro-mechanical) traffic signalling equipment of all kinds			
Vozila, osim željezničkih ili tramvajskih šinskih vozila i njihovi dijelovi i pribor	2532.1	3323.4	131.3	78327.1	88343.9	112.8	Vehicles other than railway or tramway rolling-stock, and parts and acc. Ther.			
Vazduhopl., kosmičke letjelice i njihovi dj.	944.3	4872.1	515.9	19027.9	4989.5	26.2	Aircraft, spacecraft, and parts thereof			
Brodovi, čamci i ploveće konstrukcije	1414.1	1306.6	92.4	7084.0	2848.6	40.2	Ships, boats and floating structures			
Optički, fotografski, kinematografski, mjerni, kontrolni, precizni, medicinski i hirurški instrumenti i aparati; njihovi dijelovi i pribor	235.0	523.7	222.9	25446.4	16952.2	66.6	Optical, photographic, cinematograp-hic, measuring, checking, precision, medical or surgical instruments and apparatus; parts and accessories ther.			
Časovnici i njihovi dijelovi	5.8	52.2	904.3	1576.4	1292.2	82.0	Clocks and watches and parts thereof			
Muzički instrumenti, dijelovi i pribor ovih proizvoda	2.8	10.0	356.1	485.5	414.8	85.4	Musical instruments; parts and accessories of such articles			
Namještaj, posteljina, madraci, nosači madraca, jastuci i slični punjeni proizvodi; lampe i druga svijetleća tijela, na drugom mjestu nepomenuti ili uključeni; osvijetljeni znaci, osvijetljene pločica imenima i slično, montažne zgrade	892.1	1080.8	121.2	48093.5	45491.2	94.6	Furniture; bedding, mattresses, mattress supports, cushions and similar stuffed furnishings; lamps and lighting fittings, not elsewhere specified or included; illuminated signs, illuminated name-plates and the like; prefabricated build.			
Igračke, rekviziti za društvene igre i sport; njihovi dijelovi i pribor	219.5	258.7	117.9	7102.4	7494.1	105.5	Toys, games and sports requisites; parts and accessories thereof			
Razni proizvodi	34.4	37.3	108.4	3100.1	2958.7	95.4	Miscellaneous manufactured articles			
Predmeti umjetnosti, kolekcija i starina	264.8	349.3	131.9	400.7	220.4	55.0	Works of art, collectors' pieces and ant.			
Nerazvrstani	1248.0	2103.3	168.5	2102.2	2069.6	98.4	Other			

**UNUTRAŠNJA TRGOVINA / DOMESTIC TRADE**  
**PROMET U TRGOVINI NA MALO / TURNOVER IN RETAIL TRADE**

Ø 2009 = 100

	Indeks <sup>1)</sup> / Index	PROMET u hilj. EUR / Turnover in thous. EUR
2006	68.2	581942
2007	94.7	808258
2008	109.9	937340
2009	100.0	853203
Ø I - XI 2009	99.1	70460
Ø I - XI 2010	101.6	72244
2009 <sup>2)</sup>		
XI	89.4	63536
XII	109.9	78140
2010		
I	73.7	52.409
II	86.1	61235
III	81.4	57891
IV	93.05	66156
V	102.3	72746
VI	113.5	80668
VII	112.7	80124
VIII	140.4	99846
IX	117.1	83298
X	102.2	72694
XI	95.1	67621
<b>I-I 2010/I-XI 2009</b>	<b>102.53</b>	

<sup>1)</sup> Indeks prometa po tekućim cijenama.<sup>2)</sup> Prethodni podaci<sup>1)</sup> Index of turnover at current prices.<sup>2)</sup> Preliminary data

	PROMET U TRGOVINI NA MALO / TURNOVER IN RETAIL TRADE						
	PROMET u hilj. EUR <i>Turnover in thous. EUR 2010</i>	tekući mjesec na prethodni <i>Current month compared to the previous month</i>		mjesec 2010. na isti mjesec 2009. <i>Month in 2010 compared to the same month 2009</i>		mjesec 2010. na Ø 2009 <i>Month in 2010 to Ø 2009</i>	
		indeks prometa u tekućim cijenama <i>Index of turnover at current prices</i>	indeks prometa u stalnim cijenama <i>Index of turnover at constant prices</i>	indeks prometa u tekućim cijenama <i>Index of turnover at current prices</i>	indeks prometa u stalnim cijenama <i>Index of turnover at constant prices</i>	indeks prometa u tekućim cijenama <i>Index of turnover at current prices</i>	indeks prometa u stalnim cijenama <i>Index of turnover at constant prices</i>
2010							
I	52409	67.1	67.5	90.5	92.4	73.7	74.2
II	61235	116.8	116.9	102.5	104.8	86.1	87.3
III	57891	94.5	95.1	98.5	100.7	81.4	82.9
IV	66156	114.3	114.5	96.8	97.9	93.0	94.6
V	72746	110	110.2	108.1	109.2	102.3	104.1
VI	80668	110.9	111.0	110.3	111.8	113.5	115.6
VII	80124	99.3	99.4	90.0	90.9	112.7	114.5
VIII	99846	124.6	124.9	106.9	108.3	140.4	142.6
IX	83298	83.4	83.2	114.5	115.7	117.2	118.4
X	72694	87.3	86.4	102.1	102.8	102.2	102.7
XI							

<sup>1)</sup> Prethodni podaci<sup>1)</sup> Preliminary data

**PRODAJA I OTKUP PROIZVODA POLJOPRIVREDE, ŠUMARSTVA I RIBARSTVA**  
**SALE AND BUYING OUT OF PRODUCTS FROM AGRICULTURE, FORESTRY AND FISHERY**

U hiljadama EUR		In thousands EUR					
	Indeks <i>Index</i> Ø 2009 =100	Ukupna vrijednost <i>Total value</i>	Poljoprivreda i šumarstvo / <i>Agriculture and forestry</i>				
			žita <i>Cereals</i>	industrijsko bilje <i>Industrial crops</i>	povrće <sup>1)</sup> <i>Vegetables</i>	voće <i>Fruit</i>	grožđe <i>Vine</i>
2005	74.4	15689	2	1032	146	1128	1480
2006	73.2	15422	11	-	142	1127	1208
2007	78.4	16523	-	831	284	1000	1778
2008	95.8	20198	1	-	491	1749	1897
2009	100.0	21081	51	301	296	1640	1493
Ø I - XI 2009	99.6	1750	4	27	25	145	136
Ø I - XI 2010	84.7	1488	11	22	39	92	171
2009							
XI	181.9	3196	-	-	13	1018	-
XII	104.3	1832	5	-	20	46	-
2010							
I	52.1	915	112	-	28	1	-
II	58.6	1030	-	238	19	-	-
III	59.5	1046	1	-	100	-	-
IV	57.5	1010	-	-	22	3	-
V	57.0	1002	1	-	13	-	-
VI	90.2	1585	-	-	13	418	-
VII	98.6	1733	-	-	31	14	555
VIII	165.5	2908	-	-	63	198	955
IX	105.9	1860	8	-	67	-	361
X	91.2	1603	-	-	56	111	13
XI	96.0	1686	1	-	17	272	-
<b>I - XI 2010/I - XI 2009</b>	<b>85.1</b>	<b>85.1</b>	<b>267.4</b>	<b>79.1</b>	<b>155.4</b>	<b>63.8</b>	<b>126.2</b>

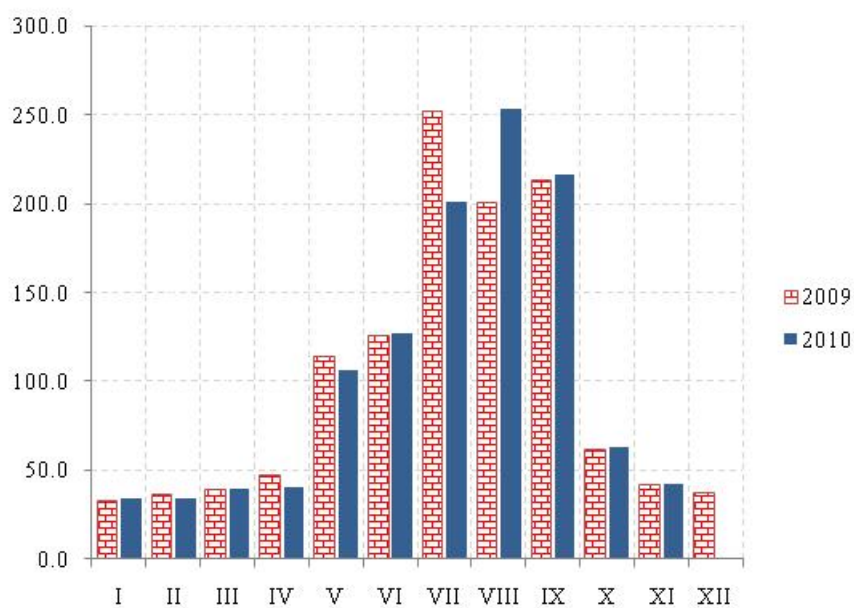
/nastavak/

/ continued /

	Poljoprivreda i šumarstvo / <i>Agriculture and forestry</i>						Ribarstvo <i>Fishery</i>
	prerađevine voća i grožđa <i>Products of fruit and vine</i>	Stoka <i>Livestock</i>	živina i jaja <i>Poultry and eggs</i>	mlijeko i mliječni proizvodi <i>Milk and milk products</i>	koža i vuna <i>Leather and wool</i>	ostali proizvodi <i>Other products</i>	riba svježa <i>Fresh fish</i>
2005	67	4762	814	4762	8	1173	315
2006	100	5437	732	5379	-	969	317
2007	171	5912	800	4640	-	810	297
2008	189	8017	1082	5204	-	1312	256
2009	84	9170	1725	4517	-	582	1222
Ø I - XI 2009	4	735	143	380	-	53	98
Ø I - XI 2010	4	438	115	372	-	98	126
2009							
XI	-	1457	124	321	-	200	63
XII	41	1085	151	338	-	-	146
2010							
I	-	232	96	341	-	25	80
II	3	264	122	255	-	51	78
III	2	260	154	386	-	30	113
IV	3	314	99	355	-	105	109
V	1	335	87	388	-	71	106
VI	25	369	105	474	-	31	150
VII	-	448	117	353	-	40	175
VIII	2	487	113	443	-	499	148
IX	-	659	132	381	-	103	149
X	-	727	115	399	8	77	97
XI	10	727	125	316	-	41	177
<b>I - XI 2010/I - XI 2009</b>	<b>107.0</b>	<b>59.6</b>	<b>80.4</b>	<b>97.9</b>	<b>-</b>	<b>184.4</b>	<b>128.4</b>

<sup>1)</sup> Uključeni i krompir i pasulj.<sup>1)</sup> includes potatoes and beans.

## UGOSTITELJSTVO / CATERING



## Promet u ugostiteljstvu / Turnover in catering

Ø 2009 = 100

	Indeks <sup>1)</sup> Index	Promet u hilj. EUR Turnover in thousands EUR
2005	49.4	65552
2006	97.0	128720
2007	102.5	136039
2008	107.6	142833
2009	100	132768
Ø I - XI 2009	105.7	11694
Ø I - XI 2010	105.3	11655
<b>2009</b>		
XI	41.9	4637
XII	37.3	4130
<b>2010</b>		
I	34.3	3792
II	34.3	3797
III	39.9	4414
IV	40.9	4522
V	106.4	11770
VI	127.3	14086
VII	200.9	22232
VIII	253.3	28027
IX	216.4	23942
X	63.1	6980
XI	42.0	4648
<b>I - XI 2010/I - XI 2009</b>	<b>99.7</b>	<b>99.7</b>

## TURIZAM / TOURISM

## Dolasci i noćenja turista po zemljama i prema vrsti mjesta

## Tourist arrivals and tourist overnight stays by country and type of resort

	2009	Kumulativ I - XI		2010			
		2009	2010	IX	X	XI	
<b>Dolasci turista</b>							<b>Tourist arrivals</b>
<b>Ukupno</b>	<b>1207694</b>	<b>1193640</b>	<b>1248893</b>	<b>175636</b>	<b>28709</b>	<b>17116</b>	<b>Total</b>
Domaći	163680	159093	170336	23242	6451	3748	Domestic
Strani	1044014	1034547	1078557	152394	22258	13368	Foreigners
<b>Noćenja turista – ukupno</b>	<b>7552006</b>	<b>7504483</b>	<b>7920399</b>	<b>991713</b>	<b>124167</b>	<b>66778</b>	<b>Tourist overnight stays – total</b>
<b>Noćenja domaćih turista</b>	<b>856332</b>	<b>848260</b>	<b>971862</b>	<b>106586</b>	<b>30615</b>	<b>17671</b>	<b>Overnight stays of domestic tourists</b>
<b>Noćenja stranih turista</b>	<b>6695674</b>	<b>6656223</b>	<b>6948537</b>	<b>884857</b>	<b>93552</b>	<b>49107</b>	<b>Overnight stays of foreigners</b>
Albanija	192145	189733	187468	13967	2759	1918	Albania
Austrija	57588	57348	58422	4104	2820	469	Austria
Belgija	46834	46773	48009	9121	1528	106	Belgium
Bosna i Hercegovina	778455	769375	728735	75616	9037	7387	Bosnia and Herzegovina
Bugarska	23307	22795	18727	3888	685	436	Bulgaria
Češka Republika	171643	171572	164881	15418	115	176	Czech Republic
Danska	5371	5351	7544	1264	344	183	Danmark
Finska	7777	7727	6352	1361	159	85	Finland
Francuska	193983	193735	233723	34289	2227	479	France
Grčka	5498	5305	6648	1129	423	228	Greece
Holandija	27647	27535	21478	5210	1403	182	Netherlands
Hrvatska	59798	58375	64942	6708	2357	1919	Croatia
Italija	225976	225428	197243	8606	3882	2114	Italy
Mađarska	205259	205091	182870	10671	696	352	Hungary
Makedonija	153530	150821	162934	28439	1919	2344	Macedonia
Norveška	43620	43521	55495	9750	5059	250	Norway
Njemačka	109893	109404	151283	31874	6470	855	Germany
Poljska	123557	123485	83976	17893	306	202	Poland
Rumunija	38061	37962	84272	8401	1481	1395	Romania
Rusija	1060510	1057769	1214293	212072	14168	6831	Russia
Slovačka	61841	61825	52306	3743	130	108	Slovakia
Slovenija	84578	83798	105139	10750	1572	1105	Slovenia
Srbija <sup>1)</sup>	2298720	2288393	2087770	216997	14201	12425	Serbia <sup>1)</sup>
Švajcarska	11887	11821	29084	2041	1665	131	Switzerland
Švedska	47696	47610	50339	8270	971	420	Sweden
Ukrajina	89681	89952	167505	41638	720	425	Ukraine
Velika Britanija	79418	79104	115189	31984	7207	768	Great Britain
Ostale evropske zemlje	418682	414413	567171	48240	3819	2960	Other European countries
Izrael	20163	20124	19684	5886	424	230	Israel
Kanada	6120	6078	7154	1513	493	201	Canada
SAD	22645	21993	33333	6629	1959	886	USA
Ostale vanevropske zemlje	22791	22367	34568	7385	2553	1537	Other non-European countries
<b>Noćenja po vrstama mjesta – ukupno</b>	<b>7552006</b>	<b>7504483</b>	<b>7920399</b>	<b>991713</b>	<b>124126</b>	<b>66778</b>	<b>Overnight stays by type of tourist resorts – total</b>
Glavni administrativni centar	103464	95628	105302	11972	9943	9019	Main administrative center
Primorska	7244830	7212211	7614859	955659	102556	48715	Coastal
Planinska	99500	95510	117839	16003	6375	5326	Mountain
Ostala turistička mjesta	102208	99262	80579	7855	5174	3535	Other tourist resorts
Ostala mjesta	2004	1872	1820	224	119	183	Other places
<b>Primorska mjesta</b>							<b>Coastal resorts</b>
Bar	964062	945851	1085428	116348	19327	11875	Bar
Budva	3258649	3252334	3430475	552521	36246	14221	Budva
Kotor	316130	315478	254488	18223	3405	663	Kotor
Tivat	244446	242085	263575	25665	6167	5922	Tivat
Ulcinj	656544	656430	790197	34793	3543	123	Ulcinj
Herceg Novi	1804999	1800033	1790311	207930	33784	15809	Herceg Novi

## TURIZAM / TOURISM

DOLASCI I NOĆENJA GOSTIJU PO VRSTAMA TURISTIČKIH MJESTA  
TOURIST ARRIVALS AND TOURIST OVERNIGHT STAYS BY TYPE OF PLACE

	Dolasci / Arrivals					Noćenja / Nights				
	glavni grad <i>Capital</i>	primorska mjest <i>Coastal resorts</i>	planinska mjest <i>Mountain resorts</i>	ostala turistička mjest <i>Other tourist resorts</i>	ostala mjest <i>Other places</i>	glavni grad <i>Capital</i>	primorska mjest <i>Coastal resorts</i>	planinska mjest <i>Mountain resorts</i>	ostala turistička mjest <i>Other tourist resorts</i>	ostala mjest <i>Other places</i>
2005	29819	747734	19185	23599	120	53886	5022260	53577	82003	121
2006	39295	859904	26362	28144	223	74169	5691770	68424	101677	230
2007	45588	1010742	39158	37642	302	104986	6961444	105892	121871	337
2008	50393	1058825	38304	40229	365	111271	7459794	102560	120682	434
2009	49166	1081805	41161	34623	939	103464	7244830	99500	102208	2004
Ø I - XI 2009	4091	97789	3557	2998	78	8693	655655	8683	9024	170
Ø I - XI 2010	4571	102193	4034	2662	75	9573	692256	10713	7325	165
2009										
XI	4892	7395	1045	1466	111	9389	46239	3873	4070	148
XII	4165	6129	2037	1646	77	7836	32619	3990	2946	132
2010										
I	2846	6328	3662	1295	69	6473	33730	12137	4637	120
II	4100	8453	2996	1465	52	7504	43895	8138	4845	78
III	4521	9033	2052	1538	62	9128	52014	5288	4764	95
IV	4403	18073	1915	1471	59	8044	81183	4561	3098	177
V	4623	67793	3305	3365	62	8863	352550	6576	9618	118
VI	4774	108161	5170	3139	92	8696	775950	12671	9217	332
VII	5545	304708	6201	3768	65	12466	2052393	17842	11487	119
VIII	5124	412601	8895	5535	113	13194	3116214	22922	16349	255
IX	4974	159273	7231	4065	93	11972	955659	16003	7855	224
X	4531	19915	1948	2222	93	9943	102556	6375	5174	119
XI	4846	9783	998	1425	64	9019	48715	5326	3535	183
I-XI 2010/I-XI 2009	111.7	104.5	113.4	88.7	96.1	110.1	105.5	123.3	81.1	97.0

## DOLASCI I NOĆENJA TURISTA / TOURIST ARRIVALS AND TOURIST OVERNIGHT STAYS

	Dolasci/Arrivals			Noćenja / Nights		
	ukupno / Total	domaći / Domestic	strani / Foreign	ukupno / Total	domaći / Domestic	strani / Foreign
2005	820457	548452	272005	5211847	3628337	1583510
2006	953928	576130	377798	5936270	3740179	2196091
2007	1133432	149294	984138	7294530	851045	6443485
2008	1188116	156904	1031212	7794741	828462	6966279
2009	1207694	163680	1044014	7552006	856332	6695674
Ø I - XI 2009	108513	14463	94050	682226	77114	605111
Ø I - XI 2010	113535	15485	98051	720036	88351	631685
2009						
XI	14909	3241	11668	63719	16828	46891
XII	14054	4587	9467	47523	8072	39451
2010						
I	14200	5062	9138	57097	18620	38477
II	17066	4609	12457	64460	17296	47164
III	17206	4157	13049	71289	19528	51761
IV	25921	5097	20824	97063	17740	79323
V	79148	13777	65371	377725	62229	315496
VI	121336	15175	106161	806866	91662	715204
VII	320827	40815	279472	2094307	250787	1843520
VIII	432268	48203	384065	3168934	338858	2830076
IX	175636	23242	152394	991713	106856	884857
X	28709	6451	22258	124167	30615	93552
XI	17116	3748	13368	66778	17671	49107
I- XI 2010/I- XI 2009	104.6	107.1	104.2	105.5	114.5	104.3

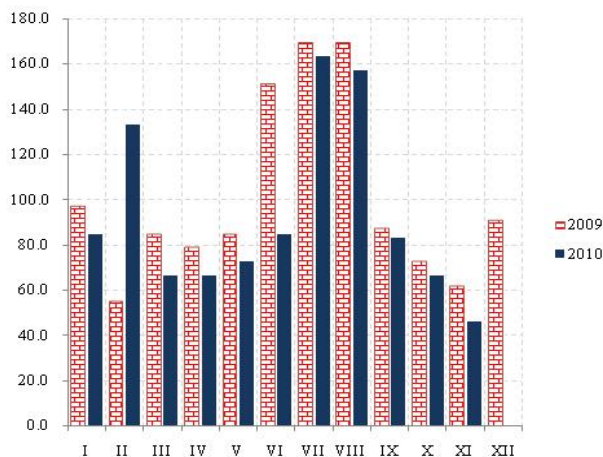


**SAOBRAĆAJ, SKLADIŠTENJE I VEZE**  
**TRANSPORT, STORAGE AND COMMUNICATIONS**

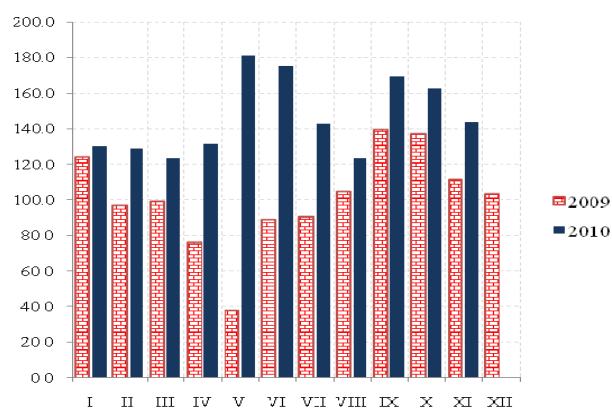
**Željeznički saobraćaj / Railway transport**

Ø 2009 = 100

**Putnički / Passengers**



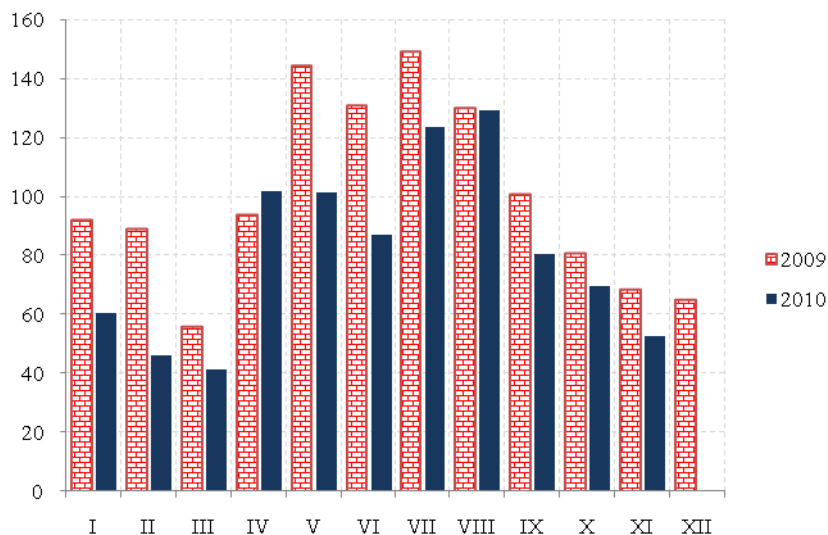
**Robni / Goods**



	ŽELJEZNIČKI SAOBRAĆAJ / RAILWAY TRANSPORT					
	Putnički / Passenger			Robni / Goods		
	indeks Index	putnici u 000 Passengers, thousands	putnički km u 000 Passenger kilometres in thousands	Indeks Index	prevoz robe u 000 t Goods in thousands tonnes	tonski km u 000 Tonne-kilometres in thousands
2005	123.8	1137	122920	132.5	1182	132782
2006	132.5	1067	131500	181.0	2494	182163
2007	110.8	999	110000	183.9	1761	184957
2008	125.9	1031	125000	192.8	1740	183854
2009	100.0	852	99200	100.0	854	100546
Ø I - XI 2009	100.8	72	8336	99.7	70	8354
Ø I - XI 2010	93.1	64	7696	146.4	99	12265
2009						
XI	61.4	50	5000	111.5	77	9351
XII	90.7	60	7500	103.3	84	8655
2010						
I	84.6	45	7000	130.0	78	10893
II	133.1	40	11000	128.9	77	10797
III	66.5	40	5500	123.1	82	10311
IV	66.5	50	5500	131.1	91	10984
V	72.6	65	6000	180.5	118	15120
VI	84.7	70	7000	175.4	121	14698
VII	163.3	107	13500	142.4	101	11932
VIII	157.3	125	13000	123.4	88	10339
IX	83.0	70	6860	169.3	116	14187
X	66.5	53	5500	162.4	111	13610
XI	46.0	70	3800	143.6	111	12036
<b>I - XI 2010/I - XI 2009</b>	<b>92.3</b>	<b>88.9</b>	<b>92.3</b>	<b>146.8</b>	<b>141.4</b>	<b>146.8</b>

**SAOBRAĆAJ, SKLADIŠTENJE I VEZE**  
**TRANSPORT, STORAGE AND COMMUNICATIONS**

**Drumski saobraćaj - Putnički / Road transport - passengers**



Ø 2009 = 100

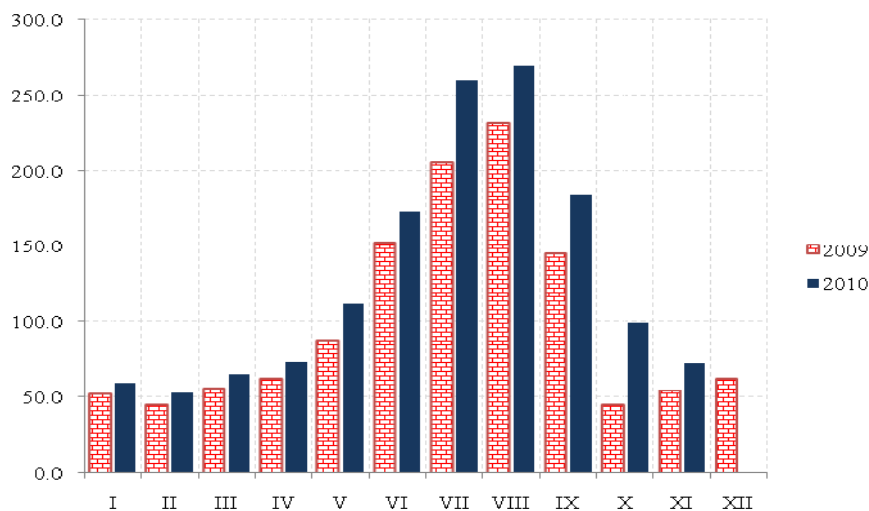
	DRUMSKI SAOBRAĆAJ / ROAD TRANSPORT							
	PUTNIČKI / PASSENGERS				ROBNI / GOODS			
	indeks Index	putnici u 000 Passengers, thous.	putnički km u 000 Passenger kilometres in thous.	autobuski km u 000 Bus kilometres in thous	indeks Index	roba u 000 tona Goods in thousands tonnes	tonski km u 000 Tonne- kilometres in thous.	kamionski km u 000 Truck kilometres in thous.
2005	83.2	4302	84883	9593	35.1	1857	61100	9365
2006	112.6	4825	114695	16809	41.8	1961	72724	15167
2007	138.5	5738	141247	17630	52.8	2131	91786	16269
2008	121.1	5503	123421	18068	78.8	2468	137058	14857
2009	100.0	5536	101928	16272	100.0	1724	179288	11667
Ø I - XI 2009	103.2	470	8765	1367	98.2	149	14677	978
Ø I - XI 2010	81.1	520	6890	1729	96.5	156	14419	1066
2009								
XI	68.4	373	5817	1244	96.0	107	13915	916
XII	64.9	362	5508	1237	123.1	89	17842	905
2010								
I	60.4	325	5132	1455	57.0	169	8517	811
II	45.9	358	3901	1387	44.4	109	6631	543
III	41.1	223	3489	1297	104.0	138	15541	1201
IV	101.9	661	8643	1400	90.7	189	13549	1175
V	101.4	475	8609	2302	105.1	196	15699	1401
VI	87.0	564	7394	1964	75.5	170	11280	1466
VII	123.4	658	10484	1877	86.1	156	12868	1274
VIII	129.0	805	10954	2244	108.2	150	16168	1172
IX	80.3	593	6822	1931	65.9	140	9842	1044
X	69.5	520	5906	1698	65.5	132	9787	802
XI	52.4	534	4455	1460	259.2	171	38731*	838
<b>I - XI 2010/I - XI 2009</b>	<b>78.6</b>	<b>110.6</b>	<b>78.6</b>	<b>126.5</b>	<b>98.2</b>	<b>104.7</b>	<b>98.2</b>	<b>109.0</b>

\*Do ovog povećanja je doslo usled značajnog povećanja prevezenih tona rude kroz teritoriju Crne Gore.

**SAOBRAĆAJ, SKLADIŠTENJE I VEZE**  
**TRANSPORT, STORAGE AND COMMUNICATIONS**

Ø 2009 = 100

**Vazdušni saobraćaj - putnički / Air transport - passengers**



	GRADSKI SAOBRAĆAJ LOCAL TRANSPORT		VAZDUŠNI SAOBRAĆAJ, PROMET NA AERODROMIMA AIR TRANSPORT, TRAFFIC AT AIRPORTS		
	indeks Index	prevezeno putnika u 000 Passengers in thousands	PUTNIČKI / PASSENGERS		ROBNI / GOODS
			indeks Index	prevoz putnika Transport of passengers	prevoz robe u tonama Transport of goods in tonnes
2005	400.4	2177	73.6	697740	1011
2006	292.5	1591	87.9	833715	1067
2007	274.0	1491	108.1	1024491	1320
2008	284.6	1547	117.1	1109095	1490
2009	100.0	544	100.0	956405	1478
Ø I - XI 2009	99.3	45	103.4	82426	101941
Ø I - XI 2010	103.8	47	129.3	103071	160154
2009					
XI	112.5	51	54.3	43309	296
XII	108.1	49	62.4	49718	357
2010					
I	79.5	36	59.9	47754	47
II	88.3	40	52.7	41993	55
III	90.5	41	65.7	52324	57
IV	92.7	42	73.6	58640	63
V	92.7	42	111.7	89026	294
VI	72.8	33	172.7	137628	378
VII	75.1	34	260.0	207256	293
VIII	97.1	44	269.3	214610	377
IX	141.3	64	184.7	147178	59
X	152.3	69	99.5	79266	62
XI	161.1	73	72.9	58106	77
<b>I - XI 2010/I - XI 2009</b>	<b>104.4</b>	<b>104.4</b>	<b>125.0</b>	<b>125.0</b>	<b>157.1</b>

**SAOBRAĆAJ, SKLADIŠTENJE I VEZE / TRANSPORT, STORAGE AND COMMUNICATIONS**  
**POMORSKI SAOBRAĆAJ / MARINE TRANSPORT**

	Prevoz robe / Transport of goods			Promet u lukama ( u tonama) / Turnover in harbours (tonnes)				
	Indeks Index	u 000 t In thous. tonnes	tonske milje u hilj.. Tonne milles in thousands	Indeks Index	ukupno Total	unutrašnji romet Internal turnover	izvoz <sup>1)</sup> Export	uvoz <sup>2)</sup> Import
2005	85.0	60	232	137.7	2039211	442	1166959	851211
2006	139.2	818	380	134.2	1988204	116	1027208	941905
2007	149.5	785	408	139.9	2071310	1825	791509	1280327
2008	128.9	595	352	131.6	1949409	8350	683990	1219948
2009	100	541	273	100	1481069	-	613696	829491
Ø I – XI 2009	78.5	46	23	102.0	125878	-	52163	70949
Ø I – XI 2010	71.7	37	21	118.8	146642	-	70642	64680
2009								
XI	71.8	43	16	84.0	103660	-	50309	50467
XII	66.1	35	15	78.1	96411	-	39903	49051
2010								
I	52.9	27	12	93.8	115756	-	64641	49948
II	49.8	29	11	90.1	111176	-	64127	41362
III	74.8	50	17	90.7	111961	-	55091	52544
IV	61.7	45	14	1701	209956	-	58280	52613
V	74.8	53	17	102.2	126164	-	67239	58629
VI	70.5	47	16	133.4	164661	-	90728	71140
VII	237.9	30	54	160.9	198601	-	120911	76044
VIII	215.9	23	49	124.6	153779	-	42213	108584
IX	110.1	42	25	119.5	147495	-	47280	97623
X	-	29	...	82.9	102351	-	52928	49086
XI	52.9	37	12	138.7	171166	-	113619	53911
<b>I - XI 2010/I - XI 2009</b>	<b>88.2</b>	<b>81.4</b>	<b>88.2</b>	<b>1165</b>	<b>116.5</b>	<b>-</b>	<b>135.4</b>	<b>91.2</b>

<sup>1)</sup>Tranzit utovar prikazan kod izvoza <sup>2)</sup>Tranzit istovar prikazan kod uvoza / <sup>1)</sup>Transit loading presented in export. <sup>2)</sup>Transit loading presented in import.

**P T T SAOBRAĆAJ / POSTAL, TELEGRAPH AND TELEPHONE (PTT) COMMUNICATIONS**

	Poštanske usluge / Postal services		Telegrafske usluge / Telegraph services		Telefonske usluge / Telephone services	
	pisma u 000 komada <i>Letters in thousands pcs.</i>	paketi u 000 komada <i>Packages in thousands pcs.</i>	uputnice u 000 komada <i>Postal orders in thousands pcs.</i>	teleg. u 000 komada <i>Telegraphs in thousands pcs.</i>	fiksna telefonija	mobilna telefonija
					<i>Fixed telephony</i> minuti u 000 <i>Minutes in thous.</i>	<i>Mobile telephony</i> minuti u 000 <i>Minutes in thous.</i>
2005	16185	56	65	572	876231	-
2006	17396	30	45	581	862596	488802
2007	18291	23	44	589	864471	660168
2008	20521	25	37	507	650567	1027704
2009	21564	25	34	476	513213	1166274
Ø I - XI 2009	1740	2	3	40	43312	96238
Ø I - XI 2010	1714	2	3	35	31645	104565
2009						
XI	1693	2	2	39	34517	97313
XII	2420	2	3	41	36781	107660
2010						
I	1587	2	2	33	32114	100359
II	1649	2	2	35	31417	90049
III	1729	2	3	40	34464	107013
IV	1694	2	2	36	32063	98495
V	1673	2	4	35	32252	105630
VI	1814	2	3	38	32143	111225
VII	1876	2	3	38	30328	132107
VIII	1838	2	3	34	29564	116760
IX	1669	2	3	32	31615	80698
X	1665	2	3	30	31546	99671
XI	1659	2	5	35	30564	108205
<b>I - XI 2010/I - XI 2009</b>	<b>98.5</b>	<b>100.0</b>	<b>100.0</b>	<b>87.5</b>	<b>73.1</b>	<b>108.5</b>

## DEPOZITI STANOVNIŠTVA / DEPOSITS BY HOUSEHOLDS

u mil. EUR, stanje na kraju perioda

balance at end-periods, EUR mill..

	Depoziti po videnju <i>Demand deposits</i>	Oročeni depoziti / <i>Time deposits</i>					Ukupno <i>Total</i>
		do 3 mjeseca <i>Up to 3 mounts</i>	od 3 mjeseca do godinu dana <i>From 3 mounts to 1 years</i>	od 1 do 3 godine <i>From 1 to 3 years</i>	preko 3 godine <i>Over 3 years</i>	ukupno <i>Total</i>	
2004.	40,1	5,1	29,7	4,4	0,1	39,2	79,3
2005 <sup>1)</sup>	93,5	7,6	55,0	19,4	0,3	82,2	175,7
2006 <sup>1)</sup>	294,4	25,8	114,1	64,8	0,3	205,0	499,4
<b>2007<sup>1)</sup></b>	<b>466,0</b>	<b>145,6</b>	<b>278,3</b>	<b>121,4</b>	<b>8,0</b>	<b>553,1</b>	<b>1019,4</b>
VIII	493,0	84,5	237,0	90,0	0,4	411,9	905,0
IX	479,5	55,0	299,0	89,1	0,5	443,7	923,2
X	474,8	130,9	236,9	109,6	4,6	482,2	957,0
XI	457,1	136,9	248,7	120,5	7,7	513,8	970,9
XII	466,0	145,6	278,4	121,4	8,0	553,4	1019,4
<b>2008</b>							
I	469,6	136,1	294,1	134,3	8,3	572,8	1.042,4
II	465,4	146,0	332,2	106,0	9,2	593,4	1.058,8
III	462,2	140,8	307,0	141,0	10,0	598,8	1.061,0
IV	464,2	150,3	309,9	154,0	10,9	625,1	1.089,3
V	438,7	168,5	313,6	151,6	10,4	644,1	1.083,0
VI	410,2	163,1	330,1	146,6	21,5	664,8	1.075,4
VII	416,9	154,9	330,2	175,3	33,6	694,0	1.110,9
VIII	418,7	168,7	352,2	159,1	24,4	704,4	1.123,1
IX	410,6	166,4	359,6	153,8	23,7	703,5	1.114,1
X	331,5	121,2	337,5	157,2	34,7	650,6	982,1
XI	298,9	87,7	259,5	228,3	23,4	599,0	898,1
XII	302,5	91,0	224,5	221,8	16,5	553,8	856,5
<b>2009</b>							
I	288,0	83,7	233,2	200,4	16,7	534,0	822,3
II	270,8	76,8	237,0	192,0	16,3	522,1	792,8
III	281,5	127,7	249,2	107,6	14,5	499,0	780,6
IV	256,6	135,1	264,7	92,0	14,0	505,8	762,4
V	248,7	140,9	254,2	89,2	14,0	498,3	747,0
VI	248,1	153,6	247,4	86,4	14,8	502,2	750,3
VII	258,0	159,6	245,4	87,3	13,6	506,0	764,0
VIII	257,6	158,8	248,9	88,9	13,0	509,5	767,1
IX	259,1	157,1	255,4	85,3	13,0	510,8	769,9
X	267,0	168,1	278,7	85,5	14,3	546,6	813,5
X	267,0	168,1	278,7	85,5	14,3	546,6	813,5
XI	255,5	176,2	284,6	85,6	14,6	561,0	816,5
XII	266,9	164,0	306,3	92,4	14,5	577,3	844,2
<b>2010</b>							
I	260,2	163,3	295,6	93,5	15,4	567,8	828,0
II	263,6	162,3	306,1	93,5	13,7	575,6	839,2
III	272,9	165,8	306,4	90,4	14,3	576,9	849,7
IV	278,4	162,7	307,0	91,6	14,2	575,4	853,9
V	292,0	159,9	305,9	94,2	14,3	574,3	866,3
VI	287,6	163,3	303,4	99,4	14,6	580,7	868,3
VII	309,7	170,1	302,4	101,0	14,8	588,3	898,0
VIII	298,3	174,4	311,0	105,9	15,7	607,0	905,3
	301,1	171,5	317,3	105,8	16,7	611,3	912,4

IZVOR: Centralna banka Crne Gore

<sup>1)</sup> Stanje na 31.XII

SOURCE: Central Bank of Montenegro

<sup>1)</sup> Balance on 31 December

PLATNI BILANS CRNE GORE <sup>1)</sup> u hilj.EUR / BALANCE OF PAYMENTS OF MONTENEGRO <sup>1)</sup> EUR thous

Kvartali Quarters	A Ukupno Total	TEKUĆI RAČUN / Current account							
		1 (1.1 - 1.2) Roba / Goods		2 (2.1 - 2.2) Usluge / Services		3 (3.1 - 3.2) Dohoci / Income		4 (4.1 - 4.2) Tekući transferi Current transfers	
		izvoz Export	uvoz Import	prihodi Revenues	rashodi Expenditures	prihodi Revenues	rashodi Expenditures	prihodi Revenues	rashodi Expenditures
		(1+2+3+4)	1.1	1.2	2.1	2.2	3.1	3.2	4.1
2008	-1,564,286	467,384	2,549,724	750,591	351,210	168,642	123,029	109,308	36,248
I	-413,498	103,524	542,084	62,648	69,646	38,096	17,633	21,911	10,314
II	-498,210	140,326	713,814	133,430	93,951	39,920	24,892	29,483	8,711
III	-230,060	125,834	739,414	465,465	102,552	45,959	45,396	28,819	8,775
IV	-422,519	97,700	554,412	89,048	85,062	44,667	35,107	29,096	8,448
2009 <sup>2)</sup>	-896,271	296,284	1,667,780	680,487	295,965	162,722	157,395	117,681	32,304
I	-258,014	76,504	355,478	55,170	64,194	40,900	26,731	26,402	10,587
II	-293,503	57,904	418,431	125,505	75,806	40,977	45,810	28,183	6,025
III	-16,929	80,020	443,418	428,541	80,395	38,633	62,301	29,517	7,528
IV	-327,824	81,856	450,454	71,271	75,571	42,212	22,553	33,580	8,165
2010 <sup>2)</sup>	-508,825	155,115	762,553	188,926	145,083	76,421	75,406	68,107	14,352
I	-241,669	60,322	314,338	50,595	67,688	37,450	32,533	31,502	6,978
II	-267,156	94,794	448,215	138,331	77,394	38,971	42,873	36,605	7,374

/nastavak /

/ continued /

Kvartali Quarters	B Ukupno Total	KAPITALNI I FINANSIJSKI RAČUN / CAPITAL AND FINANCIAL ACCAUNT					Neto greške i omaške Net errors and omissions
		račun kapitala Capital account	2 (2.1+2.2+2.3+2.4) Finansijski račun / Financial account				
			direktne investicije-neto Direct investments - net	porfolio investicije- neto Portfolio investments - net	ostale investicije- neto Other investments - net	promjena rezervi CBCG Change in CBM reserves	
			1	2.1	2.2	2.3	
(1+2)	1	2.1	2.2	2.3	2.5	(A+B)	
2008	1,329,746	-463	551,709	-15,528	638,726	155,301	234,540
I	407,594	-77	143,559	-7,636	267,042	4,707	5,904
II	385,120	-24	169,418	-3,571	259,671	-40,374	113,090
III	6,583	-209	134,003	1,620	-82,326	-46,505	223,477
IV	530,450	-153	104,729	-5,940	194,340	237,474	-107,931
2009 <sup>2)</sup>	539,817	1,959	910,907	-41,851	-274,607	-56,590	356,454
I	214,396	-3	89,823	-10,469	73,278	61,768	43,618
II	182,665	1,995	236,463	-18,651	-50,037	12,896	110,838
III	-163,966	-39	444,797	-3,929	-425,242	-179,552	180,895
IV	306,721	6	139,825	-8,802	127,393	48,298	21,103
2010 <sup>2)</sup>	329,017	-273	314,275	-617	-79,851	95,484	179,808
I	194,086	-319	129,246	-1,731	12,094	54,796	47,584
II	134,931	46	185,029	1,114	-91,945	40,687	132,225

<sup>1)</sup> IZVOR: Centralna banka Crne Gore<sup>1)</sup> SOURCE: Central Bank of Montenegro<sup>2)</sup> Prethodni podaci<sup>2)</sup> Preliminary data

**METODOLOŠKA OBJAŠNENJA****STANOVNIŠTVO****Izvori podataka**

Podaci o rođenim i umrlim licima prikupljaju se iz matičnih registara rođenih i umrlih za koje je nadležno Ministarstvo unutrašnjih poslova i javne uprave.

Podaci o zaključenim brakovima prikupljaju se od nadležnih organa lokalne uprave.

Podaci o razvedenim brakovima prikupljaju se od sudova nadležnih za razvod braka.

Podaci o unutrašnjim migracijama prikupljaju se iz registara za koje je nadležno Ministarstvo unutrašnjih poslova i javne uprave.

**Obuhvatnost**– Podaci o stanovništvu obuhvataju broj rođenih, umrlih i vjenčanih, razvedenih i preseljenih lica registrovanih u nadležnim organima.

**ZAPOSLTENOST I ZARADE****Zaposlenost**

Podaci o godišnjem i mjesečnom broju zaposlenih dobijaju se na osnovu evidencija koje su regulisane Zakonom o evidencijama u oblasti rada i zapošljavanja ("Sl.list RCG", br.69/03 ), a vode se u Centralnom registru Poreske uprave (CRPO), koje Zavod za statistiku redovno preuzima od istih.

**Obuhvatnost**

Ovim evidencijama obuhvaćeni su zaposleni u preduzećima, ustanovama i organizacijama svih oblika svojine kao i strani državljani zaposleni u našoj zemlji.

Ne smatraju se zaposlenima lica koja rade po ugovoru o djelu ili po ugovoru o obavljanju privremenih i povremenih poslova.

Podaci o nezaposlenim licima obuhvataju sva lica koja su kod Zavoda za zapošljavanje registrovana kao nezaposlena

**Definicije**

Pod pojmom zaposleni podrazumijevaju se sva lica koja imaju zasnovan radni odnos sa preduzećem, ustanovom ili organizacijom ili individualnim poslodavcem bez obzira da li su radni odnos zasnovali na neodređeno ili određeno vrijeme i da li rade puno ili kraće od punog radnog vremena. Od 1.januara2009.godine u ukupan broj zaposlenih u Crnoj Gori ulaze i zaposleni stranci na osnovu čl.1 Zakona o zapošljavanju i radu stranaca ("Sl.list CG", br. 22 od 02.04.2008.godine), a stupio na snagu 01.januara 2009.godine „stranac se može zaposliti, odnosno, raditi u Crnoj Gori pod uslovima utvđenim zakonom, kolektivnim ugovorom, potvrđenim i objavljenim međunarodnim ugovorom i opšte prihvaćenim pravilima međunarodnog prava"

**METHODOLOGICAL EXPLANATIONS****POPULATION**

**Data sources** – Data on born and dead persons are collected from the Registry Offices of born and dead which is under the jurisdiction of the Ministry of Internal Affairs and Public Administration

Data on marriages are collected by the authorities of local governments.

Information on divorces are collected from the competent courts for divorce.

Data on internal migrations are collected from the Register which is under the jurisdiction of Ministry of Internal Affairs and Public Administration.

**Coverage and definitions** – Data on population include the number of births, deaths and marriages, divorced and resettled persons registered in the competent authorities

**EMPLOYMENT AND EARNINGS****Employment**

The data on annual and monthly number of employees are received on the basis of the records regulated by the Law on Records in the Area of Labour and Employment (Official Gazette of the Republic of Montenegro 69/03), kept by the Central Register of Tax Administration (CRTA), and regularly used by the Statistical Office of Montenegro.

The above mentioned records comprise employees in enterprises, institutions and organization of all types of ownership, as well as foreign citizens employed in our country.

Persons engaged on the basis of temporary contract or contract for performing temporary and occasional activities are not considered as employees.

The data on unemployed persons include the persons registered at the Employment Agency of Montenegro under the unemployed category.

**Coverage****Definitions**

The term "employees" refers to all persons being employed in enterprises, institutions, organizations or by self-employed individuals no matter whether their employment status is based on a permanent or temporary contract and whether they work on a full-time or part-time basis. From the 1<sup>st</sup> January 2009 in the total number of employees enter also employed foreigners according to the article 1 of the Law on Employment and work of the foreigners (Official Gazette of Montenegro, number 22 from 2<sup>nd</sup> April, 2008), which took effect on the 1<sup>st</sup> January 2009 "strangers can be employed, i.e., work in Montenegro under condition established in Law, collective contract, confirmed and published international contract and generally accepted regulation of international Law"

**Nezaposleni****Definicije**

Podaci o broju nezaposlenih lica preuzeti su od Zavoda za zapošljavanje i obuhvataju samo lica koja su registrovana kod ove službe.

U grupi „lica koja traže zaposlenje“ obuhvaćena su lica shodno članu 4 Zakona o zapošljavanju, stav prvi: „nezaposlenim licem, u smislu ovoga Zakona, smatra se lice od 15-65.godina života koje se nalazi na evidenciji Zavoda za zapošljavanje Crne Gore (u daljem tekstu: Zavod) i aktivno traži zaposlenje, kao i strani državljanin ili lice bez državljanstva, koji ima odobrenje za stalno nastanjenje i odobrenje za zasnivanje radnog odnosa u Crnoj Gori”.

U grupi „lica koja primaju novčanu naknadu“ obuhvaćena su lica koja shodno članu 48 Zakona o zapošljavanju Crne Gore, stav prvi: „pravo na novčanu naknadu ostvaruje osiguranik kojem je u smislu Zakona o radu prestao radni odnos bez njegovog zahtjeva, saglasnosti ili krivice, a koji je bio u radnom odnosu kod jednog ili više poslodavaca sa punim radnim vremenom najmanje 9 mjeseci neprekidno ili 12 mjeseci sa prekidima u posljednjih 18 mjeseci (u daljem tekstu: staž osiguranja), ako se prijavi Zavodu u roku od 30 dana od dana prestanka radnog odnosa“.

U grupi „nezaposlene osobe” koje su se tokom izvještajnog mjeseca prijavile na evidenciju Zavoda za zapošljavanje Crne Gore obuhvataju grupe novoprijavljenih lica”:

- Prvi put, nema zapošljavanja – odnosi se na lica koja su se prvi put prijavila na evidenciju Zavoda, a do tada nijesu bila zapošljavana;
- Prvi put, ima zapošljavanja – lica koja su se prvi put prijavila na evidenciju Zavoda, a do tada nijesu bila zapošljavana;
- Nije prvi put, nema zapošljavanja- lica koja su se više puta prijavljivala na evidenciju Zavoda, a nisu bila zapošljavana;
- Nije prvi put, ima zapošljavanja – lica koja su se više puta prijavljivala na evidenciju Zavoda, a bila su zapošljavana;

U grupi „prestanak vođenja evidencije“ obuhvaćena su lica koja shodno članu 86 Zakona o zapošljavanju, stav prvi: „evidencija o nezaposlenom licu prestaje da se vodi ako:

1. zaključi ugovor o radu sa punim radnim vremenom; se odjavi iz evidencije nezaposlenih lica;
2. odbije uključivanje ili ne izvršava obaveze utvrđene ugovorom o uključivanju u program aktivne politike zapošljavanja;
3. postane vlasnik ili većinski suvlasnik preduzeća;
4. postane preduzetnik;

**Unemployed****Definitions**

Data about unemployed persons are taken from the Employment Agency and include only persons registered at the Agency.

The group “persons looking for employment” includes persons defined according to the article 4, par. 1 of the Law on Employment as: “an unemployed person, according to this Law, is a person aged 15-65 which is in the records of the Employment Agency of Montenegro (furthermore: EAM) and is actively looking for employment, as well as a foreigner or a person without citizenship, who has the permission for permanent residence as well as the permission for starting work in Montenegro”.

The group “persons receiving social benefits” includes persons who, according to the article 4, par. 1 of the Law on Employment: ‘receive the monetary benefit for stopped working without person’s request, compliance or guilt, and who was working for one or more employers the full working time for at least 9 months without a break or 12 months with breaks in the last 18 months (furthermore: duration of insurance), if he/she reports to the EAM within 30 days of stopping to work.

The group “unemployed persons” who reported themselves to the records of the Employment Agency of Montenegro within the reporting month includes the groups of newly reported persons:

*First time, no employment* – refers to persons who are reported for the first time in the records of EAM, and were not previously employed;

*First time, with employment* – persons who are reported for the first time in the records of the EAM, and used to be employed;

*Not-first time, no employment* – persons who reported to the records of EAM several times, and were not employed;

*Not-first time, no employment persons who reported to the records of EAM several times, and used to be employed;*

The group “stopped keeping records” includes persons who, according to the article 86, refer to the par. 1 of the Law on Employment: “records on the unemployed person is stopped to be kept if:

1. the person signs contract on work with full working time; is signed off from the records of the unemployed persons;
2. refuses inclusion or does not perform obligations specified in the agreement on the inclusion in the programme of active employment policy;
3. becomes the owner or major co-owner of an enterprise;
4. becomes an entrepreneur;



5. odbije odgovarajuće zaposlenje;
6. nije dalo tačne podatke o ispunjavanju uslova za sticanje statusa nezaposlenog lica;
7. navršši 65 godina života;
8. ostvari pravo na starosnu ili invalidsku penziju;
9. ostane potpuno nâsposoban za rad;
10. ode na izdržavanje kazne zatvora u trajanju dužem od šest mjeseci;
11. aktivno ne traži zaposlenje;
12. je radno angažovano suprotno propisima o radnim odnosima („rad na crno“);
13. postane osiguranik – zemljoradnik, u skladu sa Zakonom o penzijskom i invalidskom osiguranju“.

## ZARADE

### Izvori podataka

Podaci o prosječnim zaradama prikazuju zarade isplaćene u mjesecu i dobijeni su iz redovnog mjesečnog istraživanja Mjesečni izvještaj o zaposlenim i zaradama (obrazac RAD-1).

### Obuhvatnost

Istraživanjem su obuhvaćena preduzeća, ustanove, zadruge ili organizacije, svih oblika svojine kao i njihove jedinice u sastavu, po organizaciono teritorijalnom principu, počev od nivoa opštine.

### Definicije

„Zarada zaposlenog je bruto zarada koja obuhvata zaradu za obavljani rad i vrijeme provedeno na radu, uvećanu zaradu, naknadu zarade i druga lična primanja, koja podležu plaćanju poreza na dohodak fizičkih lica, utvrđena zakonom, kolektivnim ugovorom i ugovorom o radu.“ Član 78 Zakona o radu („Sl.list CG“, br. 49/08) i član 1 Zakona o izmjenama i dopunama Zakona o doprinosima za obavezno socijalno osiguranje („Sl.list CG“, br. 79 od 23.decembra 2008.godine).

Zarada se uvećava u skladu sa kolektivnim ugovorom i ugovorom o radu za: rad duži od punog radnog vremena; noćni rad; rad u dane državnih i vjerskih praznika koji su zakonom utvrđeni kao neradni dani; minuli rad i u drugim slučajevima utvrđenim kolektivnim ugovorom i ugovorom o radu.

**Prosječna zarada (bruto) izračunava se tako što se ukupno isplaćena masa zarada u mjesecu dijeli sa brojem zaposlenih na koje se odnose izvršene isplate.**

Zaradu bez poreza i doprinosa (neto) čini zarada (bruto) umanjena za poreze i doprinose na teret zaposlenog.

Indeks realne prosječne zarade bez poreza i doprinosa (neto) predstavlja odnos između indeksa nominalne prosječne zarade bez poreza i doprinosa (neto) i indeksa potrošačkih cijena.

5. refuses appropriate employment;
6. did not give correct data on meeting conditions for getting the unemployment status
7. is 65 years old;
8. gets right to the old-age and survivor pensions;
9. is completely incapable to work;
10. is serving the imprisonment punishment longer than 6 months;
11. is not actively looking for employment;
12. is working contrary to the regulations on labour (“unregistered work”);
13. becomes insured by agriculture, in compliance with the Law on pension and disability insurance.

## WAGES

### Data sources

The data on average wages present wages paid out in a month, and are obtained from regular monthly survey Monthly report on employees and their earnings (questionnaire RAD-1).

### Coverage

The survey covers enterprises, institutions, cooperatives or organizations as well as their composite units of all kinds of ownership, by organizational and territorial principle, starting from the level of municipality.

### Definitions

Wage of the employee is the gross earning that is consisted of earning made for work performed and time spent at work, increased earning, remuneration of earnings and other personal incomes, which are subject to income tax of natural persons, and it is determined by collective agreement and the agreement on the work.“Article 78 of the Law on work (“Official Gazette of Montenegro”, number 49/08) and article 1 of the Law on Amendments to the Act on contributions for compulsory social insurance (“Official Gazette of Montenegro”, number 79 of 23<sup>rd</sup> December, 2008)

Earnings increases in accordance with the collective agreement and the agreement on the work for: work longer than full working hours, night work, work in the days of national and religious holidays that are fixed by law as non-working days, past performance in other cases established by collective agreement and the agreement on work.

Calculation of the average gross earnings is done so that the total sum of all monthly earnings is divided by the number of employees to whom the paid earnings refer.

Net salaries and wages are tax and contributions deducted (gross) salaries and wages.

Index real average wage without taxes and contributions is the relationship between indices of nominal average wage without taxes and contributions(net), and the index of consumer prices.

**CIJENE****CIJENE PROIZVODJAČA INDUSTRIJSKIH PROIZVODA**

Pod prodajnom cijenom proizvođača industrijskih proizvoda podrazumijeva se cijena po kojoj proizvođači prodaju svoje proizvode u najvećim količinama nadomućem tržištu. U cijenu ulazi regres koji ostvaruje prodavac a odbija se rabat, popust, kasa skonto i sl, ako ih prodavac odobrava kupcima. U cijenu ne ulazi porez na dodatu vrijednost.

Ove cijene prikupljaju se mjesečnim izvještajima koje neposredno dostavljaju izabrana preduzeća za oko 250 industrijskih proizvoda. Izbor industrijskih preduzeća izvršen je prema njihovom učešću u ukupnoj realizaciji određene oblasti.

Prosječne mjesečne cijene računaju se ponderisanjem tekućih mjesečnih cijena odgovarajućih proizvoda, a godišnje prosječne cijene proizvođača industrijskih proizvoda predstavljaju neponderisani prosjek mjesečnih cijena.

Indeksi cijena izračunavaju se ponderima na bazi podataka o realizaciji industrijske proizvodnje. Svake godine vrši se korekcija pondera, a novi ponderi izračunavaju se svake pete godine.

Indeksi cijena proizvođača industrijskih proizvoda preračunavaju se početkom svake godine na prethodnu godinu kao baznu.

**POTROŠAČKE CIJENE**

Potrošačke cijene su cijene po kojima trgovina na malo, individualni proizvođači i vršiocci usluga prodaju svoje proizvode i usluge krajnjim potrošačima, uključujući sve poreze i takse koje se plaćaju u prometu na malo.

Potrošačke cijene prate se u četiri grada Crne Gore: Podgorici, Nikšiću, Kotoru i Pljevljima, koji predstavljaju veće tržišne centre.

Cijene industrijsko-neprehrambenih proizvoda snimaju se jedanput mjesečno u periodu od 3. - 10.-og, industrijsko - prehrambenih proizvoda od 11. - 14.-og, usluga od 14-16.-og, a cijene poljoprivrednih proizvoda od 15 - 21.-og u mjesecu.

Prosječne mjesečne cijene za grad kod svih proizvoda i usluga, računaju se neponderisanom geometrijskom sredinom, dok se prosječne mjesečne cijene za Crnu Goru računaju na bazi prosječnih cijena iz četiri grada koje se ponderišu strukturom potrošnje domaćinstava.

**PRICES****PRODUCER PRICES OF INDUSTRIAL PRODUCTS**

*Producer prices of industrial products is the price according to which the producers sell their products in the most numerous quantities on the domestic market. The price also includes the regress achieved by the producer, and deduces the rebate, discounts, cash sconto, etc., if the producer approves them to the buyer.*

*The price does not include value added tax..*

*These prices are collected through the monthly surveys submitted directly by the chosen enterprises for about 250 industrial products. The list of industrial enterprises is done on the basis of their participation in the total realization of certain area.*

*Average monthly prices are calculated by weighting the current monthly prices of corresponding products, and annual average producer prices of industrial products present the un-weighted average of the monthly prices.*

*Price indexes are calculated with weights based on the data on the total realization of industrial production. The correction of weights is done every year, and the new weights are calculated every five years.*

*Indices of producer prices of industrial products are recalculated in the beginning of each year using the previous year as the base year.*

**CONSUMER PRICES**

*Consumer prices are the prices at which the retail shop, custom manufacturers and service providers sale their products and services to consumers, including all taxes and fees that are paid in the small.*

*Consumer prices are monitored in the four cities of Montenegro: Podgorica, Niksic, Pljevlja and Kotor, which represent major market centers.*

*Prices non-industrial products are recorded once a month for a period of 3 - 10 th, industrial - food products from 11 - 14 th, provider of 14-16.-og, and the prices of agricultural products 15-21-th of the month.*

*Average monthly prices for the city for all products and services are calculated by non-weight geometric mean, while the average monthly prices for Montenegro calculated based on average price in the four cities that weighted by structure of household consumption.*

*Average annual consumer prices represent the average non-weight average prices for twelve months. Beginning of each year is done proofreading weights on*

Prosječne godišnje potrošačke cijene predstavljaju neponderisani prosjek cijena za dvanaest mjeseci.

Početkom svake godine vrši se korektura pondera na bazi rasta potrošačkih cijena. Indeksi potrošačkih cijena preračunavaju se početkom svake godine na prethodnu godinu kao baznu.

## ŠUMARSTVO

### Izvori podataka i obuhvatnost

Podaci se prikupljaju mjesečnim izvještajem ŠUM-22. Ovim izvještajem obuhvaćena su šumarska i druga preduzeća koja u državnim šumama vrše proizvodnju šumskih sortimenata, bez obzira da li im je proizvodnja šumskih sortimenata osnovna djelatnost ili nije.

### Definicije

Indeks fizičkog obima iskorišćavanja šuma obračunava se na osnovu podataka o proizvodnji šumskih sortimenata, prema nomenklaturi proizvoda i ponderacionih koeficijenata. Količine predstavljaju neto drvenu masu sortimenata izraženu u kubnim metrima. Za izračunavanje indeksa proizvodnje šumskih sortimenata kao koeficijenti ponderacije koriste se prosječne prodajne cijene proizvoda.

## INDUSTRIJA

### Izvori podataka

Prikazani podaci prikupljaju se mjesečnim izvještajima industrije na obrascu IND-1.

### Obuhvatnost

Mjesečnim izvještajem industrije obuhvataju se sva preduzeća kao i njihovi djelovi koji obavljaju industrijsku djelatnost, odnosno koji su prema Klasifikaciji djelatnosti razvrstani u sektore: Vajenje rude i kamena, Preradivačka industrija i Proizvodnja i snabdijevanje električnom energijom, gasom i vodom. Preduzeća neindustrijskih djelatnosti su izvještajne jedinice ako u svom sastavu imaju jedinicu koja se bavi industrijskom djelatnošću.

### Nomenklatura

Proizvodnja se iskazuje prema Nomenklaturi industrijskih proizvoda, koju čine industrijski proizvodi i usluge razvrstane po djelatnostima u kojima su proizvedeni.

### Indeksi

Indeks fizičkog obima industrijske proizvodnje formiran je na osnovu podataka o količinama proizvoda i ponderacionog sistema. Podaci o količinama daju se prema Nomenklaturi proizvoda i sirovina.

Za obračun indeksa fizičkog obima industrijske proizvodnje ponderi izražavaju prosječnu dodatnu vrijednost po jedinici proizvoda.

*the basis of consumer price growth. Consumer price converted at the beginning of each year to the previous year as a base.*

## FORESTRY

### Data sources and coverage

*The data are collected on the basis of the monthly survey ŠUM-22. This report covers forestry and other enterprises dealing with production of forest assortments in state forests, disregarding if forest assortments production is their basic activity or not.*

### Definitions

*The physical volume index of forests exploitation is calculated on the basis of data on the production of forest assortments, according to the present nomenclature of products and weights coefficients. Quantities represent net wood mass of assortments expressed in cubic meters. In order to calculate the index of forest assortments production, average purchase prices are used as weighting coefficients.*

## INDUSTRY

### Sources of data

*The shown data are collected by monthly surveys (through the questionnaire IND-1).*

### Coverage

*Monthly industry survey includes all enterprises, as well as their parts, performing the industrial activity, i.e. those that are according to the Classification of Activities classified into the following sectors: Mining and quarrying, Manufacturing, Electricity, gas, and water supply. Enterprises of non-industrial activities represent reporting units if they have in their structure a unit dealing with industrial production.*

### Nomenclature

*The production is presented according to the Nomenclature of industrial products, including industrial products and services structured according to the activities in which they were produced.*

### Indices

*Index of physical scope of industrial production is formed on the basis of data on product quantities and weighting system.*

*The data are provided according to the Nomenclature of products and raw materials. In the calculation of the index of physical scope of industrial production, the weights express the average value added per product unit.*

**GRAĐEVINARSTVO****Izvor podataka i obuhvat**

Prikazani podaci prikupljaju se tromjesečnim izvještajem građevinarstva GRAĐ-31, kojim su obuhvaćena preduzeća iz oblasti građevinarstva, kao i jedinice koje obavljaju građevinsku djelatnost a nalaze se u sastavu negrađevinskih preduzeća. Podaci se prikupljaju od preduzeća iz Crne Gore kao i poslovnih jedinica stranih preduzeća koja obavljaju građevinsku djelatnost u Crnoj Gori.

**Definicije**

Vrijednost izvršenih građevinskih radova izražena je u tekućim cijenama i obuhvata sav ugrađeni građevinski materijal i utrošeni rad. Podaci o vrijednosti izvršenih građevinskih radova daju se na osnovu privremenih situacija koje ispostavljaju izvođači radova. U vrijednosti nijesu uključeni troškovi nabavke zemljišta, projektovanja, nadzora i PDV-a. Podaci o vrijednosti izvedenih radova odnose se na radove izvedene u izvještajnom periodu na završenim i nezavršenim građevinama.

Broj radnika – Obuhvata sve radnike koji na gradilištima obavljaju građevinske, instalaterske i završne radove, bez obzira na kvalifikaciju, vrstu radnog odnosa (ugovor o radu, ugovor o djelu, iznajmljeni radnici itd.) i dužinu rada na gradilištima. Nijesu uključeni zaposleni koji rade na inženjersko-tehničkim, administrativnim i rukovodećim poslovima.

Izvršeni efektivni časovi rada - Obuhvataju stvarno odrađene časove radnika angažovanih na gradilištima u redovnom radnom vremenu kao i u prekovremenim satima.

Nove narudžbe – Predstavljaju ukupnu vrijednost ugovorenih radova između proizvođača i treće strane na osnovu zaključenog ugovora.

**SPOLJNA TRGOVINA****Izvori i metodi prikupljanja podataka**

Izvor podataka za statistiku spoljne trgovine je Jedinstvena Carinska Isprava o izvozu i uvozu robe, koju prilikom carinjenja robe, u ime preduzeća, podnose carinarcima špediterska preduzeća koja imaju dispoziciju carinskog obveznika.

**Obuhvatnost**

Pri izvozu obuhvata se sva roba koja potiče iz domaće odnosno proizvodnje iz unutrašnjeg robnog prometa uključujući i tzv. nacionalizovanu robu (roba koja je bila uvezena i ocarinjena, pa se u nepromijenjenom ili doradenom stanju izvozi kao roba porijekla iz Crne Gore

**CONSTRUCTION****Source of data and coverage**

Presented data are collected through a quarterly survey in construction GRAĐ-31, which include enterprises in construction, as well as units performing the activity in construction and are within non-construction enterprises. Data are collected from enterprises from Montenegro as well as the business units of foreign enterprises performing construction activity in Montenegro.

**Definitions**

Value of finalized construction works is given at current prices and includes all built material and performed work. Data about the value of finalized construction works is given on the basis of temporary situations given by contractors. The value does not include costs of buying the land, engineering, monitoring and VAT. The data on value of finalized work refer to works performed in the reporting period on finished and non-finished construction sites.

Number of workers – Includes all workers who at the construction site perform the construction, installation and final works, no matter to qualification, the type of working contract (contract on work, contract on task, rented workers, etc.) and the duration of work at the construction site. It does not include employees working on engineering-technical, administrative and managerial positions.

Effective working hours – include really performed working hours of workers engaged in the regular working hours, as well as overtime work.

New orders – present the total value of contracted works between producer and third party based on the concluded report.

**EXTERNAL TRADE****Sources and methods of data collection**

Data source for external trade statistics is Single Administrative Document on import and export of goods, submitted, on behalf of enterprises, by shipping agents having the disposition of Custom tributary.

**Coverage**

Export covers all goods of domestic i.e. internal production origin, including so-called nationalized merchandise, (imported goods cleared through the customs, and unchanged exported as goods of Montenegro origin). Import covers all merchandise imported, cleared through the customs, and put on domestic market for reproduction, investment or consumption purposes.

na strano tržište). Uvoz obuhvata svu robu uvezenu iz inostranstva koja je ocarinjena i puštena u unutrašnji promet u cilju reprodukcije, investicija ili široke potrošnje. Uključene su i isporuke raznih dobrotvornih organizacija i privatne poklon pošiljke.

Od januara 2008. god. MONSTAT je u skladu, sa preporukama UN-a i EUROSTAT-a primijenio opšti i specijalni trgovinski sistem .

MONSTAT je do sada koristio ublaženu definiciju specijalnog sistema trgovine. Svjesni ograničenja ublažene definicije specijalnog sistema trgovine, u rezultate spoljnotrgovinske razmjene uključen je i ponovni izvoz robe iz carinskih skladišta i slobodnih carinskih zona koji se registruje po opštem sistemu trgovine.

**Opšti sistem trgovine** koristi se u slučajevima kada se statistička teritorija zemlje poklapa s njenom ekonomskom teritorijom. Prema tome, opšti sistem trgovine predstavlja širi koncept i kod uvoza obuhvata svu robu koja ulazi na ekonomsku teritoriju zemlje koja prikuplja podatke, sa izuzetkom robe koja je u tranzitu, a kad izvoza obuhvata svu robu koja napušta ekonomsku teritoriju zemlje koja prikuplja podatke, sa izuzetkom robe koja je u tranzitu.

**Sistem specijalne trgovine** predstavlja užu koncept i koristi se u slučajevima kada se statistička teritorija zemlje poklapa samo sa određenim dijelom njene ekonomske teritorije. Stroga definicija specijalnog sistema trgovine koristi se kada statistička teritorija obuhvata samo slobodno cirkulirajuće područje u okviru koga roba može biti raspoloživa bez carinskih ograničenja, to znači da je ona prošla carinski postupak i da se koristi za domaću upotrebu u cilju reprodukcije, široke potrošnje i investicije.

Izvoz obuhvata svu robu koja napušta slobodno cirkulirajuće područje zemlje koja prikuplja podatke.

## Definicije

*Vrijednost robe* u spoljnoj trgovini iskazana je na osnovu cijena koje su postigla preduzeća prilikom sklapanja ugovora. Sve vrijednosti obračunate su na bazi pariteta franko granice Crne Gore: FOB-cijene za izvoz, CIF-cijene za uvoz.

Statistička vrijednost robe koja se izvozi jeste faktorna vrijednost robe. Statistička vrijednost robe koja se uvozi jeste vrijednost koja predstavlja carinsku osnovicu. Podaci o vrijednosti su obračunati po tekućim kursovima koji se primjenjuju za utvrđivanje carinske osnovice. Po tekućim kursovima koji se primjenjuju za utvrđivanje carinske osnovice takođe je izvršen obračun troškova transporta, osiguranja, pretovara i sl. koji se plaćaju u stranoj valuti.

*Deliveries of various charity organizations and private gifts are also included.*

*Due to the recommendations of UN and EUROSTAT, MONSTAT has since January 2008 applied the general and special trade systems.*

*So far MONSTAT was using the reduced definition of the special trade system. Being aware of the limitations of the reduced definition of special trade system, the results of external trade include the re-export of goods from customs warehouses and free customs zones which is registered according to general trade system.*

**General trade system** is used in cases when the statistical territory matches with its economic territory. Accordingly, the general trade system presents the wider concept and in import it includes all goods coming in the economic territory of the country which collects data, with the exception of goods in transit, and in export it includes all goods leaving the economic territory of the country which collects data, with the exception of goods in transit.

**Special trade system** presents the narrow concept and is used in cases when the statistical territory of the country matches only with the certain part of its economic territory. The strict definition of the special trade system is used when the statistical territory includes only the free circulating area in which the goods can be available without the customs limitations, which means that it went through the customs procedure and that it is used for domestic use for the purpose of reproduction, wider consumption and investments.

*The export includes all goods which leaves the free circulating area of the country which collects the data.*

## Definitions

*Value of goods in external trade statistics is shown on the basis of prices fixed by organizations and enterprises by contractual stipulation. All values have been calculated on the basis of parity free on Montenegrin border, i.e. F.O.B. export prices and C.I.F. import prices.*

*Statistical value of goods being exported is the invoice value of goods. Statistical value of goods being imported is the value representing customs base. Data on values are calculated on the basis of exchange rates applied for establishing customs base. Costs of transport, insurance and reloading, etc. paid in foreign currency are calculated at current exchange rates applied for establishing customs base.*

*Registration of external trade data by country is carried out according to principle of destination country for the export and origin country for the import. It means that, in case of export, the country in which goods are consumed or further processed is registered, and in case*

Registracija podataka spoljne trgovine po zemljama vrši se po principu zemlje namjene kod izvoza i zemlje porijekla kod uvoza. To znači da se pri izvozu registruje zemlja u kojoj se roba troši i dalje prerađuje, a pri uvozu ona zemlja u kojoj je roba proizvodnjom dovedena u stanje u kome se uvozi

## UNUTRAŠNJA TRGOVINA

### Izvori podataka

Podaci o unutrašnjoj trgovini preduzeća koja se bave trgovinom na malo, prikupljaju se redovnim mjesečnim istraživanjem. Istraživanje je na bazi uzorka i obuhvaćena su preduzeća koja su u Registru jedinica razvrstavanja prema klasifikaciji djelatnosti razvrstana u sektor trgovine.

Podaci o prodaji i otkupu proizvoda poljoprivrede, šumarstva i ribarstva prikupljaju se mjesečnim izvještajima o realizaciji poljoprivrednih proizvoda sopstvene proizvodnje poljoprivrednih preduzeća i zemljoradničkih zadruga i mjesečnim izvještajem o otkupu poljoprivrednih proizvoda od individualnih gazdinstava.

### Obuhvatnost

Statistika unutrašnje trgovine obuhvata i prikazuje promet preduzeća čija je osnovna djelatnost trgovina na malo.

Mjesečnim izvještajima o prodaji i otkupu proizvoda poljoprivrede, šumarstva i ribarstva obuhvaćena su poljoprivredna preduzeća, zemljoradničke zadruge kao i druga preduzeća koja su ovlašćena da vrše otkup proizvoda od individualnih gazdinstava u cilju dalje prerade ili prodaje.

### Definicije

Promet robe u trgovini na malo predstavlja vrijednost prodane robe preduzeća na malo koja je prodana krajnjim potrošačima, odnosno stanovništvu za ličnu potrošnju i upotrebu u domaćinstvu, kao i pravnim i fizičkim licima za obavljanje djelatnosti.

Podaci o prodaji i otkupu proizvoda poljoprivrede, šumarstva i ribarstva obuhvataju vrijednost prodaje proizvoda iz sopstvene proizvodnje preduzeća i zadruga kao i otkup vrijednosti proizvoda od individualnih gazdinstava, koje vrše zato ovlašćene organizacije u cilju dalje prerade ili prodaje.

## UGOSTITELJSTVO

### Izvori podataka i obuhvatnost

Podaci o ostvarenom prometu u ugostiteljstvu po mjesecima, se procjenjuje na osnovu ocjene trenda prometa, dok se ne dobiju rezultati redovnog tromjesečnog istraživanja, ugostiteljstva. Mjesečne procjene se korijuju na osnovu dobijenih rezultata.

*of import – the country where the goods have been produced in the condition in which they have been imported.*

## INTERNAL TRADE

### Sources of data

*Data of internal trade of enterprises dealing with retail trade are collected through regular monthly survey. The survey is sample based and includes all enterprises which are in the Administrative register classified in the sector Trade.*

*Data about sales and buy out of products in agriculture, forestry and fishery are collected through monthly reports on realization of agricultural products of own production of agricultural enterprises and cooperatives and through monthly report on buying out of agricultural products from individual holdings.*

### Coverage

*Statistics of internal trade covers and presents the turnover of enterprises whose primary activity is retail trade.*

*Monthly survey on sales and buying out of products in agriculture, forestry and fishing covers agricultural enterprises, agricultural cooperatives, as well as other enterprises authorized to do the buying out of products from individual holdings for future processing or sale.*

### Definitions

*Turnover of goods in retail trade is the retail value of goods of an enterprise sold to final users, i.e., the population for personal consumption and use in household, as well as to private and physical persons for performing the activity.*

*Data on sales and buying out of products in agriculture, forestry and fishing cover the value of sale of products from own production of enterprises and cooperatives as well as the buying out of value of products from individual holdings, performed by authorized agencies for further processing or sale.*

## CATERING

### Sources of data and coverage

*Data on realized turnover in catering by month are estimated on the basis of estimate of trend of turnover, until the results of the regular quarterly survey in catering are received. Monthly estimates are corrected on the basis of received results.*

Podaci o prometu u ugostiteljstvu prikupljaju se tromjesečnom izvještajnom službom za ugostiteljska preduzeća, po grupama usluga. Godišnjom izvještajnom službom prate se ugostiteljska preduzeća i preduzetnici. Mjesečni podaci ne obuhvataju promet preduzetnika.

### Definicije

Prikazani promet u ugostiteljstvu predstavlja vrijednost izvršenih ugostiteljskih usluga koje obuhvataju usluge smještaja, ishrane, točenja pića, kao i druge usluge koje se uobičajeno obavljaju u ugostiteljstvu.

## TURIZAM

### Izvori podataka i obuhvatnost

Podaci o broju dolazaka turista i noćenja prikupljeni su redovnim mjesečnim izvještajem (obrazac TU-11). Izvještaji se sastavljaju na osnovi evidencija u knjigama gostiju. Istraživanje se sprovodi na bazi potpunog obuhvata.

### Definicije

**Izveštajne jedinice** jesu svi poslovni subjekti (preduzeća/trgovačka društva, zadruge, ustanove, itd.) i njihovi dijelovi koji obavljaju djelatnost pružanja usluga smještaja turistima; zdravstvene ustanove za svoje objekte u kojima osobe borave radi medicinske rehabilitacije (osobe same snose naknadu za taj boravak); poslovni subjekti i njihovi dijelovi koji se bave posredovanjem u pružanju smještajnih usluga (putničke agencije); poslovni

subjekti koji se bave posredovanjem u smještaju gostiju u seoskim kućanstvima; turističke zajednice i druga nadležna tijela za privatne sobe, apartmane ili kuće koje neposredno iznajmljuju turistima; poslovni subjekti i njihovi dijelovi za svoja odmarališta; poslovni subjekti koji su osnovali ili vode brigu i nadzor nad planinarskim domovima; vojne ustanove za svoje ugostiteljske objekte za smještaj gostiju; poslovni subjekti koji se za vrijeme školskih praznika koriste školama, domovima i sličnim objektima kao privremenim smještajnim kapacitetima; Istraživanjem su obuhvaćene sve pravne osobe i njihovi dijelovi te fizičke osobe koje iznajmljuju smještajne objekte turistima (komercijalni objekti).

**Turist** je svaka osoba koja u mjestu van svog prebivališta provede najmanje jednu noć u ugostiteljskom ili drugom objektu za smještaj turista radi odmora ili rekreacije, zdravlja, studija, sporta, religije, porodice, poslova, javnih misija ili skupova.

U turiste se ne uključuju migranti, pogranični radnici, diplomati, članovi vojnih snaga na redovnim zadacima, izbjeglice, itd.

**Prebivalište** je mjesto u kojem se osoba nastanila s namjerom da u njemu stalno živi. Turist je registrovan u svakom mjestu ili objektu u kojem boravi i zbog toga, u slučaju promjene mjesta ili objekta, dolazi do njegova

*Data on turnover in catering are collected through quarterly survey survey for enterprises in catering, by groups of services. The annual survey collects data on enterprises in catering and entrepreneurs. Monthly data do not include turnover of entrepreneurs.*

### Definitions

*Presented turnover in catering presents the value of performed catering services including the services of accommodation, food, pouring beverages, as well as other services usually performed in catering.*

## TOURISM

### Sources of data and coverage

*Data about arrivals of tourists and overnight stays are collected through regular monthly survey (form TU-11). The reports are compiled on the basis of records in the guest books. The survey is conducted on the basis of full coverage.*

### Definitions

*Reporting units are all business subjects (enterprises/trade companies, cooperatives, institutions, etc.) and their parts performing activity of providing accommodation services to tourists; health institutions for their objects attended by persons for medical rehabilitation (persons pay by themselves for the stay); business subjects and their parts dealing with intermediation in providing accommodation services (travel agencies); business subjects dealing with intermediation in accommodation of guests in village houses; tourist unions and other competent bodies for private rooms, apartments or houses directly rented by tourists; business subjects and their parts for their resorts; business subjects which founded or take care on a monitor the mountain lodgings; military institutions for their catering objects for accommodation of guests; business subjects which are during school holidays used by schools, hostels and similar objects as temporary placing capacities. The survey covers all legal persons and their parts as well as persons renting accommodation to tourists (commercial objects).*

*Tourist is a person who spends at least one night in an accommodation facility or some other object for accommodation of tourists, in a place other than his/her place of permanent residence for the reason of vacation or recreation, health, studies, sports, religion, family, business, public missions or meetings. Tourists do not include migrants, border workers, diplomats, members of military force in the regular duty, refugees, etc.*

*Residence is the place where the person is settled intending to permanently live in it. Tourist is registered in a place or object where it resides and due to it, in the case of change of place or object, the double reporting may*

ponovnog iskazivanja, a time i do dvostrukosti u podacima. Prema tome, statistika evidentira broj dolazaka turista, a ne broj turista.

## SAOBRAĆAJ, SKLADIŠTENJE I VEZE

Podaci o prevozu putnika i robe u unutrašnjem, pomorskom, vazdušnom i drumskom saobraćaju odnose se na prevoz koji obavljaju saobraćajna preduzeća registrovana u saobraćajnoj djelatnosti, bez obzira da li prevoz obavljaju unutar ili van granica naše zemlje za račun domaćeg ili inostranog korisnika.

Podaci se prikupljaju redovnim mjesečnim i godišnjim statističkim izvještajima saobraćajnih preduzeća.

### Željeznički saobraćaj

Prevezeni putnici u unutrašnjem saobraćaju obuhvataju otputovale putnike, otputovale putnike u inostranstvo, prispjele iz inostranstva i putnike u tranzitu. Prevezeni teret obuhvata utovarenu robu u unutrašnjem i u međunarodnom saobraćaju: uvoz, izvoz i tranzit.

### Promet na aerodromima

Podaci o prometu putnika i robe na aerodromima dobijeni su na osnovu redovnih mjesečnih i godišnjih izvještaja preduzeća za aerodromske usluge i obuhvataju kompletan promet, odnosno i domaće i strane avione.

### Drumski saobraćaj

Podaci o prevozu odnose se na rad domaćih preduzeća drumskog saobraćaja u unutrašnjem i međunarodnom prevozu putnika i tereta.

### Gradski saobraćaj

Obuhvaćen je prevoz putnika koji obavljaju saobraćajne organizacije u gradskom i prigradskom saobraćaju

### Poštanski saobraćaj

Poštanski saobraćaj obuhvata: Poštanske usluge, telegrafске i telefonske usluge. Poštanske aktivnosti obuhvataju sljedeće usluge: prenos pismonosnih i paketnih pošiljki i usluge platnog prometa.

Pismonosne pošiljke odnose se na otpremljena pisma, dopisnice, novine i časopise, preporuke i vrijednosna pisma u unutrašnjem prometu, a u međunarodnom prometu i u prispijeću. Tranzit nije obuhvaćen.

Platni promet obuhvata uplate poštanskim uputnicama, po žiro i tekućim računima i računskim knjižicama, isplate međunarodnim poštanskim uputnicama i žiro i tekućim računima i računskim i invalidskim knjižicama.

*appear, which may lead to the double data. There the statistis records the arrivals of tourists, adn not the number of tourists.*

## TRANSPORT, STORAGE AND COMMUNICATIONS

*Data on the transport of passengers and goods in the internal, marine, air and road transport refer to the transport performed by transport enterprises registered in transport activities, no matter whether the transport is done inside or outside the borders of our country on the account of domestic or foreign user.*

*Data are collected through regular monthly or annual statistical surveys from reports of transport enterprises.*

### Railway transport

*Passengers transported in domestic transport include departed passengers, passengers departed abroad, passengers who arrived from abroad and passengers in transit. Transported cargo includes loaded goods in domestic and international transport: import, export and transit.*

### Traffic in airports

*Data about traffic of passengers and goods in airports are received on the basis of regular monthly and annual reports of enterprises for airport services and they cover complete traffic, i.e., both domestic and foreign airplanes.*

### Road transport

*Data about transport refer to the work of domestic enterprises of road transport in internal and international pransport of passengers and cargo.*

### Local transport

*It includes the transport of passengers performed by transport organizations in local and commuter services.*

### Postal communications

*Postal communications include: Postal services, telegraphic and telephone services. Postal activities include the following services: transport of letter mail and services of ballance of payments.*

*Letter mail refer to only to mail sent, postal cards, newspaper and magazines, registered and value letters in domestic transport, as well as for the receiving in the international communications. The transit is not included.*

*Balance of payment includes payments made by postal money orders, by giro and current accounts and account booklets, payments by international postal money orders and giro and current accounts and account and disability booklets.*



Telegrafске usluge obuhvataju otpremu telegrama u unutrašnjem prometu i prometu sa inostranstvom, uključujući i tranzit.

Telefonske usluge obuhvataju fiksnu i mobilnu mrežu i prikazuju se u onim jedinicama koje se i koriste u tehničkom smislu-minutima.

## MONETARNI AGREGATI

### Izvori podataka

Za izradu monetarne statistike su: bilansi Centralne banke Crne Gore i bilansi banaka. Banke dostavljaju podatke u skladu sa Odlukom o izvještajima koje banke dostavljaju Centralnoj banci Crne Gore.

Za prikupljanje i obradu podataka monetarne statistike nadležna ja Centralna banka Crne Gore.

### Definicije

**Monetarnu bazu (M0)** čine depoziti banaka kod CBCG (obračunski račun banaka i izdvojena obavezna rezerva - do januara 2008. bez dijela koji banke drže u državnim zapisima) i procijenjeni iznos gotovog novca u opticaju.

**Monetarni agregat (M1)** čine M0, depoziti po viđenju nebankarskog sektora kod banaka i CBCG, u eurima i drugim valutama, isključujući depozite centralne Vlade.

**Monetarni agregat (M11)** čini M11 uvećan za depozite centralne Vlade po viđenju, u eurima i drugim valutama.

**Monetarni agregat (M2)** čine M1 i oročeni depoziti nebankarskog sektora kod banaka i CBCG, u eurima i drugim valutama, isključujući depozite centralne Vlade.

**Monetarni agregat (M21)** čini M11 uvećan za oročene depozite (uključujući depozite centralne Vlade), u eurima i drugim valutama.

**Depoziti stanovništva** – u tabeli je prikazano stanje ukupnih depozita fizičkih lica kod banaka na kraju perioda i njihova struktura po ročnosti.

## PLATNI BILANS CRNE GORE

Bilans plaćanja sastavlja se u skladu sa metodologijom koju je preporučio Međunarodni monetarni fond (Balance of payments Manual, fifth edition, 1993). Izvori podataka su: Republička uprava carina Crne Gore, MONSTAT, Elektroprivreda Crne Gore, Ministarstvo finansija, poslovne banke i CBCG. Bilans plaćanja se iskazuje u eurima. Preračunavanje vrijednosti transakcija iz originalnih valuta u izvještajnu valutu obavlja se: primjenom srednjih kurseva

*Telegraph services refer to sending of telegrams in the country as well as to foreign countries, including the transit.*

*Telephone services include fixed and mobile networks and are presented in the units used in the technical sense - minutes.*

## MONETARY AGGREGATS

### The sources of data

*For preparation of monetary statistics are: the balance sheets of the Central Bank of Montenegro and of banks. Banks submit their data according to the Decision on reports that banks submit to the Central Bank of Montenegro.*

*The Central Bank of Montenegro is responsible for the collection and processing of the data of monetary statistics.*

### Definitions

***Monetary base (M0)** comprises banks' deposits in the CBM -Payment Operations (banks' giro accounts and allocated reserve requirement until January 2008, excluding the part which banks keep as treasury bills) and the estimated amount of cash in circulation.*

***Monetary aggregate (M1)** comprises M0, demand deposits by the non-banking sector with banks and the CBM, in EUR and other currencies, excluding deposits of the central Government.*

***Monetary aggregate (M11)** comprises M1 plus the central Government's demand deposits in EUR and other currencies.*

***Monetary aggregate (M2)** includes M1 and non-banking sector's time deposits with banks and CBM, in EUR and other currencies, excluding deposits of the central Government.*

***Monetary aggregate (M12)** comprises M11 plus the central Government's time deposits in EUR and other currencies.*

***Deposits by households** – the table present the balance of total deposits of individuals by households at the end of period and their structure by time.*

## THE BALANCE OF PAYMENT OF MONTENEGRO

*The balance of payments is prepared according to the methodology prescribed by the International Monetary Fund (Balance of Payment, 1993). The sources of data are: Custom Administration of Montenegro, MONSTAT, Montenegrin Electric Enterprise, the Ministry of Finance,*

CBCG na dan transakcije, primjenom mjesečnih i godišnjih srednjih prosječnih kurseva CBCG, primjenom srednjeg dnevnog kursa na kraju perioda kod procjene transakcija čija se razlika stanja prati.

Početkom 2005. godine izvršena je revizija podataka koji se odnose na 2004. godinu. Naime, tokom 2004. godine postalo je tehnički moguće pratiti robne transakcije između Crne Gore i Srbije na osnovu podataka Republičke uprave carina Crne Gore, odnosno carinskih deklaracija. Do 2004. godine izvor za praćenje ovih tokova su bili jedino podaci poslovnih banaka o ostvarenom platnom prometu sa inostranstvom, odnosno ITRS.

Izvor podataka o spoljnoj trgovini od 2005. godine je MONSTAT. U 2008. godini izvršena je revizija podataka o spoljnoj trgovini za 2007. godinu u skladu sa promjenom metodologije koju koristi MONSTAT. Podaci o spoljnoj trgovini u platnom bilansu Crne Gore za 2007. i 2008. godinu prikazani su po opštem sistemu trgovine. CBCG vrši prilagođavanje podataka dobijenih od MONSTAT-a za potrebe platnog bilansa u skladu sa metodologijom MMF-a (Balance of Payments Manual, Fifth edition, IMF, 1993).

Kod evidencije transportnih usluga koriste se podaci banaka o ostvarenom platnom prometu sa inostranstvom. Prihodi od **putovanja** obuhvataju procijenjene prihode od turizma, koji se dopunjavaju sa podacima o pruženim zdravstveno-rekreativnim uslugama i potrošnjom u cilju školovanja. Do prihoda od turizma se dolazi na osnovu broja noćenja (podatak MONSTAT-a) i procijenjene prosječne dnevne potrošnje.

Početkom 2006. godine korigovan je model za procjenu prihoda od turizma, korekcija se odnosi na 2003. i 2004. godinu. Podaci o rashodima za turizam dobijaju se na osnovu ostvarenog platnog prometa sa inostranstvom.

Finansijske usluge (usluge osiguranje i reosiguranja, zastupnička i posrednička provizija i provizija i troškovi u bankarskom poslovanju) se prate na osnovu statistike platnog prometa sa inostranstvom. Ostale usluge obuhvataju građevinske usluge, ptt i komunikacijske usluge, usluge osiguranja, kompjuterske i informacione usluge, autorska prava i honorare od izdavanja dozvola i ostale poslovne usluge. Podaci o njima se dobijaju iz statistike platnog prometa sa inostranstvom, a na osnovu izvještaja banaka.

Račun dohotka uključuje podatke iz statistike platnog prometa sa inostranstvom o kompenzacijama, zaposlenima, plaćanjima i naplatama po osnovu kamata, plaćenim i naplaćenim dividendama. Izvor podataka su izvještaji banaka i CBCG.

*commercial banks, and the Central Bank of Montenegro. The balance of payments is presented in EUR. Recalculation of the transaction values from the original currency to the reporting currency is performed by: using*

*the mean exchange rate from the Central Bank of Montenegro and at the end of the period with evaluation transactions whose change is monitored using daily mean exchange rate.*

*The revision of data referring to 2004 was done in the beginning of 2005. Namely, it was technically possible in 2004 to follow transaction of goods between Montenegro and Serbia on the basis of data from Customs Administration of Montenegro i.e., the customs declarations. Until 2004 the source for viewing these currents was only data of banks about the achieved balance of payments with foreign countries, i.e., ITRS.*

*Since 2005, the source of data about external trade is MONSTAT. In 2008. accomplished revision data from external trade for 2007 with methodology which use MONSTAT. CBM makes adjustments of data received from MONSTAT in order to harmonize them with the IMF methodology (Balance of Payments Manual, Fifth edition, IMF, 1993).*

*The registering of transportation services uses banks' data on performed international payment operations.*

*Incomes from travelling include estimated incomes from tourism, which are supplemented by data on provided health- recreation services and expenditures for education. Data on expenditures in tourism are obtained on the basis of the number of tourist overnight stays (data from MONSTAT) and estimated average daily consumption.*

*The model for estimation of incomes from tourism was modified in the beginning of 2006, and the correction refers to 2003 and 2004. Data on expenditures in tourism are obtained on the basis of international payment operations.*

*Financial services (insurance and reinsurance, representative and mediation commission fees, and commission fees and expenses for banking operations) are covered on the basis of foreign payment operations statistics. Other services include investment work in foreign countries, PTT and communication services, forwarding services, expenses for the maintenance of representative offices, computer and information technology services, author's fee, and fee for license issuance, as well as other business services. The data is obtained from foreign payment operations statistics and banks' reports.*

Tekući transferi obuhvataju podatke o transferima sektora vlade i ostalih sektora koji se dobijaju iz statistike platnog prometa sa inostranstvom.

Direktne i portfolio investicije prate se na osnovu podataka statistike platnog prometa sa inostranstvom i sprovedenih anketa. Ostale investicije koje obuhvataju podatke o kreditima, trgovinskim kreditima, gotovini i depozitima se dobijaju iz statistike platnog prometa sa inostranstvom.

Rezerve Centralne banke Crne Gore obuhvataju sredstva komercijalnih banaka deponovana kod ino banaka, sredstva Centralne banke deponovana kod ino banaka, sredstva u trezoru CBCG i rezervne pozicije kod MMF-a. Izvor podataka je CBCG (monetarna statistika).

*Income statement comprises data from foreign payment operations statistics on compensations to employees, payments, and charged dividends. The source of data is banks' reports.*

*Current transfers include data about transfers of Government sector and other sectors received from balance of payment with foreign countries.*

*Direct and portfolio investments are followed on the basis of data of international payment operations statistics and conducted surveys. Other investments include data about loans, trade loans, cash and deposits and are obtained from the balance of payment statistics with foreign countries.*

*The Central Bank of Montenegro's reserves comprise commercial banks' fund deposited in international bank and the CBM funds deposited in foreign banks, funds in the CBM treasury and reserve positions in IMF. The source of data is CBM (monetary statistics).*

REDAKCIJA / EDITORIAL BOARD :

RAJKO LAKOVIĆ, rukovodilac / coordinator  
Mr. Gordana Radojević, Gojko Dragaš,  
Branka Šušić – Radovanović,  
Snežana Remiković, Bojana Radević-Radojević

Tehnički urednik / *Editor* : Radmila Šišević  
Grafički prikazi / *Graphs* : Radmila Šišević  
Prevod / *Translated by*: Irena Mihailović

IZDAJE I ŠTAMPA: Zavod za statistiku Crne Gore – MONSTAT, Podgorica, IV Proleterske br. 2  
Prilikom korišćenja navesti izvor – preporučuje se skraćenica – MSP, br.- /2008

ODGOVARA: Radomir Đurović, direktor.

Izlazi 25-og u mjesecu. Tiraž 150 primjeraka. Prodajno odjeljenje: Tel: +382 20 230-773

*PUBLISHED AND PRINTED BY: Statistical Office of Montenegro – MONSTAT, Podgorica, IV Proleterske no. 2  
Data using is subject to quoting source – abbreviation recommended: MSR, no. -/2008*

*RESPONSIBLE: Radomir Đurović, Director.*

*Issued on 25<sup>th</sup> in a month. Circulation 150 copies. Department of sales: +382 20 230-773*

*E-mail: [contact@monstat.org](mailto:contact@monstat.org) Web Site: [www.monstat.org](http://www.monstat.org)*