

## External trade of Montenegro January-July 2011

**The total external trade** of Montenegro for period January-July 2011 is EUR 1 265 million, indicating the growth of 15% in comparison with the same period of the previous year.

The value of **exports of goods** is EUR 247.4 million, what is 44% higher compared to the same period of previous year, **and imports** are EUR 1 017 million, what is 9.7% higher compared to the same period of previous year.

**The coverage of import by export** is 24.3%, and it is higher compared to the coverage for the same period of previous year, when it was 18.5%.

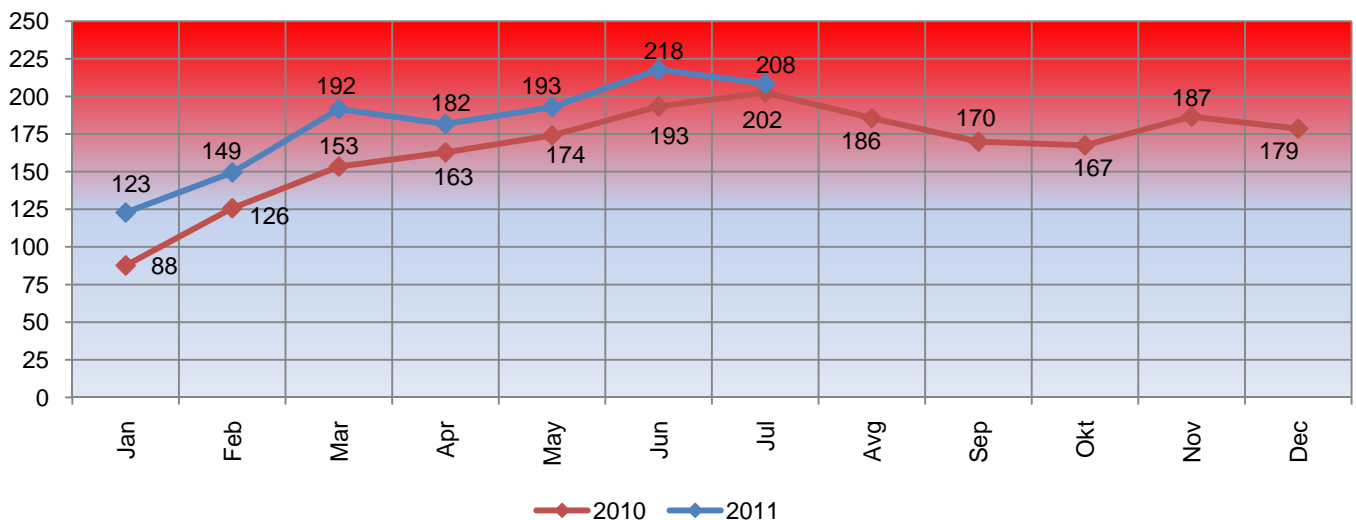
**Structure of exports** in accordance with the SITC (Standard International Trade Classification) the most present products are **Manufactured goods classified chiefly by material**– Section 6, in amount of EUR 124.3 million (consisted of: Non-ferrous metals with the amount of EUR 111.8 million, and Iron and steel with EUR 7.8 million).

**The structure of imports** in accordance with the classification SITC (Standard International Trade Classification) is presented mostly products of Section 0 – Food and live animals with EUR 196.2 million (consisted of: Meat and meat preparations with EUR 39.2 million, and Cereals and cereal preparations with EUR 33.2 million).

**Main trading partners in exports** with individual basis were: Serbia (EUR 47.5 million), Hungary (EUR 46 million) and Greece (EUR 35.1 million).

**Main trading partners in imports** with individual basis were: Serbia (EUR 233.3 million), Greece (EUR 67.1 million), and Bosnia and Herzegovina (EUR 63.6 million). The highest external trade trend was with CEFTA and EU countries.

External trade trend of Montenegro January – July 2011 in mil. EUR



## External trade trend of Montenegro 2007 – July 2011

in EUR 1000

Period	Import	Export	Trade balance
<b>2007</b>	<b>2,073,093</b>	<b>454,739</b>	<b>-1,618,355</b>
<b>2008</b>	<b>2,529,741</b>	<b>416,165</b>	<b>-2,113,576</b>
<b>2009</b>	<b>1,654,170</b>	<b>277,011</b>	<b>-1,377,159</b>
<b>2010</b>			
2010 January	74,054	13,566	-60,488
2010 February	107,057	18,624	-88,434
2010 March	129,785	23,591	-106,194
2010 April	136,810	26,030	-110,780
2010 May	138,117	36,010	-102,107
2010 June	168,997	24,372	-144,625
2010 July	172,865	29,635	-143,230
2010 August	155,789	29,794	-125,995
2010 September	142,459	27,480	-114,979
2010 October	138,681	28,799	-109,882
2010 November	143,638	42,931	-100,706
2010 December	149,078	29,535	-119,542
<b>2011</b>			
2011 January	85,375	37,466	-47,909
2011 February	117,749	31,708	-86,042
2011 March	149,619	42,032	-107,587
2011 April	145,912	35,787	-110,125
2011 May	159,433	33,489	-125,944
2011 June	184,779	32,973	-151,807
2011 July	174,429	33,984	-140,446

## Import of Montenegro by continents

in EUR 1000

Period	World	Europe	Africa	America	Asia	Oceania and polar region
<b>2007</b>	<b>2,073,093</b>	<b>1,809,699</b>	<b>2,560</b>	<b>66,926</b>	<b>193,421</b>	<b>487</b>
<b>2008</b>	<b>2,529,741</b>	<b>2,214,291</b>	<b>4,180</b>	<b>87,041</b>	<b>223,934</b>	<b>295</b>
<b>2009</b>	<b>1,654,170</b>	<b>1,450,892</b>	<b>2,708</b>	<b>56,159</b>	<b>143,926</b>	<b>485</b>
<b>2009</b>						
January	103,938	92,849	214	3,439	7,404	32
February	118,194	104,708	187	3,467	9,796	36
Mach	131,077	114,656	310	3,594	12,469	47
April	130,704	113,415	224	5,159	11,890	16
May	137,004	120,446	121	5,464	10,910	61
June	147,036	130,571	204	4,739	11,488	35
July	148,506	132,934	241	4,762	10,540	29
August	143,094	124,760	258	6,669	11,364	43
September	147,463	129,852	363	5,162	12,042	44
Oktober	152,670	130,375	177	4,727	17,317	74
November	138,025	119,723	112	4,323	13,838	28
December	156,459	136,602	298	4,652	14,867	40
<b>2010</b>						
January	74,054	63,591	89	3,806	6,538	30
February	107,057	92,902	160	4,048	9,916	31
Mach	129,785	111,141	296	5,065	13,226	57
April	136,810	120,981	239	3,481	12,057	51
May	138,117	121,629	166	4,594	11,652	75
June	168,997	150,137	1,507	3,289	13,966	98
July	172,865	152,593	486	6,006	13,641	139
August	155,789	137,354	362	4,840	13,188	46
September	142,459	122,048	654	5,375	14,354	28
Oktober	138,681	119,400	162	3,411	15,683	25
November	143,638	126,433	243	4,501	12,455	7
December	149,078	130,202	177	5,457	13,232	11
<b>2011</b>						
January	85,375	74,100	159	2,824	8,286	6
February	117,749	102,664	231	3,731	11,122	1
Mach	149,619	128,969	228	3,733	16,583	106
April	145,912	127,006	1,921	3,104	13,860	20
May	159,433	140,022	1,490	3,883	13,942	97
June	184,779	157,391	7,966	4,451	14,951	20
July	174,429	157,265	344	3,697	13,079	44

## Share of external trade by continents

Year	World	Europe	Africa	America	Asia	Oceania and polar region
<b>2007</b>	100.0%	87.3%	0.1%	3.2%	9.3%	0.0%
<b>2008</b>	100.0%	87.5%	0.2%	3.4%	8.9%	0.0%
<b>2009</b>	100.0%	87.7%	0.2%	3.4%	8.7%	0.0%
<b>2010</b>	100.0%	87.4%	0.3%	3.3%	9.0%	0.0%

## Exports of Montenegro by continents

in EUR 1000

Period	World	Europe	Africa	America	Asia	Oceania and polar region
<b>2007</b>	<b>454,739</b>	<b>450,774</b>	<b>1,066</b>	<b>2,001</b>	<b>890</b>	<b>7</b>
<b>2008</b>	<b>416,165</b>	<b>412,042</b>	<b>1,116</b>	<b>1,099</b>	<b>1,902</b>	<b>7</b>
<b>2009</b>	<b>277,011</b>	<b>265,753</b>	<b>958</b>	<b>7,559</b>	<b>2,741</b>	<b>0</b>
<b>2009</b>						
January	31,270	31,020	215	32	3	0
February	20,315	20,193	107	1	15	0
Mach	20,047	20,022	12	6	7	0
April	14,029	13,148	202	48	631	0
May	11,428	11,201	147	74	6	0
June	26,543	26,436	0	60	48	0
July	33,551	33,117	130	66	237	0
August	24,593	24,471	0	50	73	0
September	17,549	17,091	18	65	375	0
Oktober	26,556	26,300	80	49	128	0
November	27,167	19,773	1	7,040	354	0
December	23,963	22,982	47	69	866	0
<b>2010</b>						
January	13,566	13,491	13	8	54	0
February	18,624	18,569	20	29	6	0
Mach	23,591	23,172	81	50	279	8
April	26,030	24,529	3	173	1,325	0
May	36,010	35,381	67	9	543	10
June	24,372	23,714	473	51	1	133
July	29,635	29,468	45	12	109	0
August	29,794	29,615	0	6	166	8
September	27,480	27,023	9	63	371	15
Oktober	28,799	28,543	0	90	166	0
November	42,931	42,707	35	42	147	0
December	29,535	28,998	46	85	406	0
<b>2011</b>						
January	37,466	37,214	55	38	148	11
February	31,708	31,196	0	47	457	8
Mach	42,032	41,842	83	35	65	7
April	35,787	35,650	62	52	7	16
May	33,489	33,218	0	63	208	0
June	32,973	32,446	207	25	278	17
July	33,984	33,871	5	81	12	15

## Share of external trade by continents

Year	World	Europe	Africa	America	Asia	Oceania and polar region
<b>2007</b>	100.0%	99.1%	0.2%	0.4%	0.2%	0.0%
<b>2008</b>	100.0%	99.0%	0.3%	0.3%	0.5%	0.0%
<b>2009</b>	100.0%	95.9%	0.3%	2.7%	1.0%	0.0%
<b>2010</b>	100.0%	98.4%	0.2%	0.2%	1.1%	0.1%

**External trade of Montenegro by continents and selected countries  
for period January-July 2010/2011**

Trading partners	in EUR1000									
	Export				Import				Trade balance	
	January-July 2010	January-July 2011	January-July 2010	January-July 2011	January-July 2010	January-July 2011	January-July 2010	January-July 2011	Jan-July 2010	Jan-July 2011
<b>World</b>	100%	171,827	100%	247,438	100%	927,685	100%	1,017,296	-755,859	-769,859
<b>Europe</b>	98%	168,325	99%	245,436	88%	812,974	87%	887,418	-644,649	-641,981
<b>EU-27</b>	55%	93,711	57%	141,450	38%	349,285	36%	368,261	-255,574	-226,812
<b>CEFTA</b>	41%	70,476	37%	92,430	40%	370,897	43%	435,730	-300,421	-343,301
<b>Africa</b>	0%	703	0%	412	0%	2,943	1%	12,339	-2,241	-11,927
<b>Asia</b>	1%	2,317	0%	1,174	9%	80,996	9%	91,824	-78,679	-90,650
<b>America</b>	0%	332	0%	342	3%	30,290	2%	25,422	-29,958	-25,080
<b>Oceania</b>	0%	150	0%	74	0%	482	0%	293	-332	-220
<b>SAD</b>	0%	270	0%	240	1%	8,613	1%	7,841	-8,343	-7,601
<b>China</b>	0%	47	0%	68	5%	48,080	6%	58,063	-48,032	-57,996
<b>Russia</b>	0%	734	0%	1,078	2%	17,116	0%	3,973	-16,382	-2,895
<b>Switzerland</b>	1%	1,659	2%	5,009	1%	9,461	1%	7,619	-7,802	-2,610
<b>Japan</b>	0%	109	0%	508	1%	11,191	1%	10,372	-11,081	-9,864
<b>Turkey</b>	1%	1,549	2%	4,889	2%	18,210	1%	14,508	-16,661	-9,619
<b>Brazil</b>	0%	0	0%	1	2%	16,977	1%	12,223	-16,977	-12,222

## External trade by EU-27 countries and countries under CEFTA agreement

in EUR 1000

IMPORT 1999											
TRADING PARTNERS	%	EXPORT			%	IMPORT			TRADE BALANCE		
		2010	2010 Jan-July	2011 Jan-July		2010	2010 Jan-July	2011 Jan- July	2010	2010 Jan- July	2011 Jan- July
WORLD	100%	330,367	171,827	247,438	100%	1,657,329	927,685	1,017,296	-1,326,963	-755,859	-769,859
EU-27	56%	184,817	93,711	141,450	38%	625,207	349,285	368,261	-440,390	-255,574	-226,812
Austria	1%	2,824	916	3,666	3%	49,525	30,933	19,031	-46,701	-30,018	-15,365
Belgium	0%	166	34	317	0%	6,537	3,398	3,414	-6,370	-3,364	-3,098
Bulgaria	0%	124	79	6	0%	6,447	3,390	3,954	-6,323	-3,311	-3,948
Czech Republic	2%	5,134	1,625	5,130	1%	15,890	7,711	8,593	-10,756	-6,086	-3,463
Denmark	0%	6	1	21	0%	2,964	1,192	1,793	-2,958	-1,190	-1,771
Estonia	0%	0	0	0	0%	109	63	101	-109	-63	-101
Finland	0%	12	12	565	0%	2,956	1,748	1,155	-2,944	-1,737	-589
France	1%	1,822	655	966	2%	26,899	15,034	17,018	-25,077	-14,379	-16,052
Greece	17%	56,393	36,017	35,056	7%	115,322	56,029	83,827	-58,930	-20,011	-48,770
Netherlands	2%	7,385	4,405	2,042	2%	25,571	15,632	14,743	-18,186	-11,227	-12,701
Ireland	0%	6	6	0	0%	1,963	859	1,192	-1,957	-853	-1,192
Italy	15%	48,828	18,182	22,885	6%	99,120	59,590	59,743	-50,293	-41,408	-36,858
Cyprus	0%	172	125	188	0%	457	307	401	-285	-182	-212
Latvia	0%	0	0	2	0%	79	50	34	-79	-50	-33
Lithuania	0%	0	0	0	0%	34	3	16	-34	-3	-16
Luxembourg	0%	79	39	419	0%	479	226	119	-400	-187	300
Hungary	9%	28,962	13,382	45,994	1%	12,881	7,380	7,289	16,081	6,002	38,705
Malta	0%	444	338	98	0%	10	3	2	434	335	97
Germany	1%	3,124	1,123	3,955	7%	117,118	67,991	58,852	-113,994	-66,868	-54,897
Poland	0%	969	265	1,756	1%	10,062	5,664	7,817	-9,093	-5,399	-6,061
Portugal	0%	0	0	0	0%	534	301	410	-534	-301	-410
Romania	1%	2,430	2,180	30	1%	21,317	10,112	15,593	-18,886	-7,932	-15,562
Slovakia	0%	658	244	340	0%	5,790	3,322	5,234	-5,131	-3,078	-4,894
Slovenia	6%	20,568	10,897	14,935	4%	60,242	33,769	34,785	-39,674	-22,871	-19,850
Spain	0%	74	45	293	1%	23,171	14,258	11,920	-23,097	-14,213	-11,627
Sweden	0%	479	244	728	0%	6,448	2,768	3,403	-5,969	-2,524	-2,675
United Kingdom	1%	4,158	2,896	2,056	1%	13,284	7,552	7,822	-9,126	-4,656	-5,765
CEFTA	40%	130,521	70,476	92,430	40%	670,000	370,897	435,730	-539,479	-300,421	-343,301
Albania	2%	8,243	4,217	7,383	1%	9,008	4,830	7,627	-764	-613	-244
Bosnia and Herzegovina	7%	24,109	12,356	11,628	7%	123,523	67,845	75,428	-99,414	-55,490	-63,801
Macedonia	0%	1,086	418	524	1%	23,230	13,262	14,755	-22,144	-12,844	-14,231
Moldavia	0%	0	0	0	0%	126	68	93	-126	-68	-93
Croatia	1%	4,044	1,994	15,775	5%	80,152	46,319	49,256	-76,108	-44,324	-33,481
Serbia	23%	74,927	41,924	47,468	26%	432,631	238,063	287,230	-357,704	-196,138	-239,762
UMNIK Kosovo	5%	18,111	9,568	9,652	0%	1,330	511	1,342	16,781	9,057	8,310
Other countries	5%	15,029	7,639	13,558	22%	362,122	207,502	213,305	-347,094	-199,863	-199,747

## External trade of Montenegro with EU-27, USA, Japan, and China

Period	EU-27		SAD		JAPAN		CHINA	
	Value in thous. euro	%	Value in thous. euro	%	Value in thous. euro	%	Value in thous. euro	%
<b>EXPORT</b>								
<b>2007</b>	<b>314,868</b>	<b>69.24%</b>	<b>1,769</b>	<b>0.39%</b>	<b>34</b>	<b>0.01%</b>	<b>62</b>	<b>0.01%</b>
<b>2008</b>	<b>258,800</b>	<b>62.19%</b>	<b>892</b>	<b>0.21%</b>	<b>145</b>	<b>0.03%</b>	<b>152</b>	<b>0.04%</b>
<b>2009</b>	<b>133,827</b>	<b>48.31%</b>	<b>7,407</b>	<b>2.70%</b>	<b>12</b>	<b>0.00%</b>	<b>95</b>	<b>0.03%</b>
<b>2010</b>	<b>184,817</b>	<b>55.94%</b>	<b>461</b>	<b>0.14%</b>	<b>544</b>	<b>0.16%</b>	<b>149</b>	<b>0.05%</b>
2010 January	4,464	32.9%	8	0.1%	0	0.0%	0	0.0%
2010 February	9,656	51.8%	2	0.0%	0	0.0%	6	0.0%
2010 March	12,730	54.0%	31	0.1%	0	0.0%	0	0.0%
2010 April	11,230	43.1%	173	0.7%	0	0.0%	42	0.2%
2010 May	23,367	64.9%	9	0.0%	0	0.0%	0	0.0%
2010 June	14,094	57.8%	35	0.1%	0	0.0%	0	0.0%
2010 July	18,170	61.3%	12	0.0%	109	0.4%	0	0.0%
2010 August	17,623	59.1%	3	0.0%	0	0.0%	0	0.0%
2010 September	15,843	57.7%	13	0.0%	50	0.2%	0	0.0%
2010 October	14,637	50.8%	90	0.3%	152	0.5%	0	0.0%
2010 November	27,356	63.7%	27	0.1%	81	0.2%	0	0.0%
2010 December	15,648	53.0%	59	0.2%	152	0.5%	102	0.3%
<b>2011</b>								
2011 January	29,314	78.24%	38	0.10%	147	0.39%	0	0.00%
2011 February	13,824	43.60%	37	0.12%	0	0.00%	1	0.00%
2011 March	26,609	63.31%	35	0.08%	65	0.15%	0	0.00%
2011 April	22,230	62.12%	32	0.09%	0	0.00%	3	0.01%
2011 May	20,338	60.73%	61	0.18%	141	0.42%	63	0.19%
2011 June	17,987	54.55%	25	0.08%	155	0.47%	0	0.00%
2011 July	11,148	32.80%	11	0.03%	0	0.00%	0	0.00%
<b>IMPORT</b>								
<b>2007</b>	<b>941,297</b>	<b>45.41%</b>	<b>37,534</b>	<b>1.81%</b>	<b>41,571</b>	<b>2.01%</b>	<b>100,464</b>	<b>4.85%</b>
<b>2008</b>	<b>1,081,175</b>	<b>42.74%</b>	<b>55,963</b>	<b>2.21%</b>	<b>40,602</b>	<b>1.60%</b>	<b>123,834</b>	<b>4.90%</b>
<b>2009</b>	<b>620,593</b>	<b>37.52%</b>	<b>17,604</b>	<b>1.06%</b>	<b>19,685</b>	<b>1.19%</b>	<b>90,343</b>	<b>5.46%</b>
<b>2010</b>	<b>625,207</b>	<b>37.72%</b>	<b>15,367</b>	<b>20.75%</b>	<b>19,822</b>	<b>1.20%</b>	<b>88,864</b>	<b>5.36%</b>
2010 January	28,326	38.3%	1,100	1.5%	1,456	2.0%	3,529	4.8%
2010 February	43,548	40.7%	784	0.7%	1,540	1.4%	6,058	5.7%
2010 March	44,214	34.1%	1,162	0.9%	1,494	1.2%	8,311	6.4%
2010 April	50,553	37.0%	1,124	0.8%	1,733	1.3%	6,807	5.0%
2010 May	52,531	38.0%	1,291	0.9%	1,358	1.0%	7,135	5.2%
2010 June	62,383	36.9%	1,209	0.7%	2,097	1.2%	8,106	4.8%
2010 July	67,731	39.2%	1,942	1.1%	1,511	0.9%	8,134	4.7%
2010 August	61,543	39.5%	1,277	0.8%	1,560	1.0%	6,551	4.2%
2010 September	47,992	33.7%	1,419	1.0%	2,585	1.8%	8,386	5.9%
2010 October	50,853	36.7%	1,176	0.8%	1,788	1.3%	9,767	7.0%
2010 November	56,801	39.5%	1,591	1.1%	1,455	1.0%	7,953	5.5%
2010 December	58,732	39.4%	1,291	0.9%	1,243	0.8%	8,127	5.5%
<b>2011</b>								
2011 January	30,437	35.65%	923	1.08%	1,191	1.40%	5,008	5.87%
2011 February	43,998	37.37%	917	0.78%	1,468	1.25%	6,370	5.41%
2011 March	55,356	37.00%	1,218	0.81%	2,055	1.37%	11,000	7.35%
2011 April	52,000	35.64%	1,164	0.80%	1,542	1.06%	8,425	5.77%
2011 May	62,617	39.27%	1,190	0.75%	1,406	0.88%	9,170	5.75%
2011 June	62,135	33.63%	1,351	0.73%	1,370	0.74%	9,849	5.33%
2011 July	61,717	35.38%	1,078	0.62%	1,341	0.77%	8,240	4.72%

## Export classified by SITC products for EU, CEFTA, USA, Japan, and China

in EUR 1000

SITC CLASSIFICATION	2008		2009		2010		Jan-July 2010	Jan- July 2011
<b>WORLD</b>	<b>416,165</b>	<b>100%</b>	<b>277,011</b>	<b>100%</b>	<b>330,367</b>	<b>100%</b>	<b>171,827</b>	<b>247,438</b>
<b>0-9 TOTAL</b>	416,165	100%	277,011	100%	330,367	100%	171,827	247,438
0+1 Food, beverages and tobacco	40,698	10%	40,158	14%	45,039	14%	20,143	21,209
2+4 Raw materials	33,665	8%	25,410	9%	46,000	14%	22,664	35,536
3 Mineral fuels, lubricants and related materials	12,502	3%	8,375	3%	33,286	10%	18,496	39,167
5 Chemicals	10,713	3%	11,824	4%	12,916	4%	6,094	7,229
7 Machinery and transport equipment	23,912	6%	27,745	10%	27,047	8%	14,062	12,971
6+8 Other manufactured goods	294,675	71%	163,174	59%	166,078	50%	90,368	128,527
<b>EU-27</b>	<b>258,800</b>	<b>62%</b>	<b>133,827</b>	<b>48%</b>	<b>184,817</b>	<b>56%</b>	<b>93,711</b>	<b>141,450</b>
<b>0-9 TOTAL</b>	258,800	62%	133,827	48%	184,817	56%	93,711	141,450
0+1 Food, beverages and tobacco	4,704	1%	6,159	2%	5,485	2%	1,270	1,712
2+4 Raw materials	16,753	4%	9,056	3%	18,179	6%	9,673	15,811
3 Mineral fuels, lubricants and related materials	9,936	2%	5,286	2%	18,355	6%	9,570	11,060
5 Chemicals	340	0%	113	0%	219	0%	99	185
7 Machinery and transport equipment	11,516	3%	9,062	3%	9,558	3%	5,955	6,038
6+8 Other manufactured goods	215,552	52%	104,151	38%	133,023	40%	67,145	103,843
<b>CEFTA</b>	<b>147,432</b>	<b>35%</b>	<b>127,946</b>	<b>46%</b>	<b>130,521</b>	<b>40%</b>	<b>70,476</b>	<b>92,430</b>
<b>0-9 TOTAL</b>	147,432	35%	127,946	46%	130,521	40%	70,476	92,430
0+1 Food, beverages and tobacco	33,952	8%	31,618	11%	36,493	11%	17,855	17,982
2+4 Raw materials	16,065	4%	15,171	5%	22,516	7%	11,168	14,852
3 Mineral fuels, lubricants and related materials	2,342	1%	3,082	1%	13,192	4%	7,424	23,325
5 Chemicals	9,866	2%	11,626	4%	12,695	4%	5,993	6,995
7 Machinery and transport equipment	10,679	3%	9,970	4%	14,478	4%	5,947	5,397
6+8 Other manufactured goods	74,527	18%	56,154	20%	31,147	9%	22,090	23,878
<b>USA</b>	<b>892</b>	<b>0%</b>	<b>7,407</b>	<b>3%</b>	<b>461</b>	<b>0%</b>	<b>270</b>	<b>240</b>
<b>0-9 TOTAL</b>	892	0%	7,407	3%	461	0%	270	240
0+1 Food, beverages and tobacco	239	0%	239	0%	284	0%	114	157
2+4 Raw materials	12	0%	6	0%	3	0%	3	9
3 Mineral fuels, lubricants and related materials	2	0%	0	0%	0	0%	0	0
5 Chemicals	0	0%	0	0%	0	0%	0	0
7 Machinery and transport equipment	216	0%	7,160	3%	140	0%	120	48
6+8 Other manufactured goods	422	0%	2	0%	34	0%	32	26
<b>Japan</b>	<b>145</b>	<b>0%</b>	<b>12</b>	<b>0%</b>	<b>544</b>	<b>0%</b>	<b>109</b>	<b>508</b>
<b>0-9 TOTAL</b>	145	0%	12	0%	544	0%	109	508
0+1 Food, beverages and tobacco	0	0%	0	0%	0	0%	0	0
2+4 Raw materials	0	0%	0	0%	0	0%	0	0
3 Mineral fuels, lubricants and related materials	0	0%	0	0%	0	0%	0	0
5 Chemicals	0	0%	0	0%	0	0%	0	0
7 Machinery and transport equipment	145	0%	12	0%	544	0%	109	508
6+8 Other manufactured goods	0	0%	0	0%	0	0%	0	0
<b>China</b>	<b>152</b>	<b>0%</b>	<b>95</b>	<b>0%</b>	<b>149</b>	<b>0%</b>	<b>47</b>	<b>68</b>
<b>0-9 TOTAL</b>	152	0%	95	0%	149	0%	47	68
0+1 Food, beverages and tobacco	25	0%	51	0%	107	0%	5	66
2+4 Raw materials	20	0%	22	0%	0	0%	0	0
3 Mineral fuels, lubricants and related materials	0	0%	0	0%	0	0%	0	0
5 Chemicals	0	0%	0	0%	0	0%	0	0
7 Machinery and transport equipment	4	0%	0	0%	11	0%	11	1
6+8 Other manufactured goods	103	0%	23	0%	31	0%	31	0



# Import classified by SITC products for EU, CEFTA, USA, Japan, and China

in EUR 1000

SITC CLASSIFICATION	2008		2009		2010		Jan-Jul 2010	Jan-Jul 2011
<b>WORLD</b>	<b>2,529,741</b>	<b>100%</b>	<b>1,654,170</b>	<b>100%</b>	<b>1,657,329</b>	<b>100%</b>	<b>927,685</b>	<b>1,017,296</b>
<b>0-9 TOTAL</b>	2,529,741	100%	1,654,170	100%	1,657,329	100%	927,685	1,017,296
0+1 Food, beverages and tobacco	405,460	16%	379,713	23%	388,139	23%	214,462	232,669
2+4 Raw materials	77,457	3%	50,295	3%	82,811	5%	45,413	56,912
3 Mineral fuels, lubricants and related materials	359,999	14%	208,057	13%	209,660	13%	106,716	170,249
5 Chemicals	189,687	7%	167,918	10%	162,956	10%	95,120	98,252
7 Machinery and transport equipment	714,719	28%	357,735	22%	340,607	21%	197,100	179,745
6+8 Other manufactured goods	782,374	31%	490,449	30%	473,157	29%	268,874	278,752
<b>EU-27</b>	<b>1,081,175</b>	<b>43%</b>	<b>620,593</b>	<b>38%</b>	<b>625,207</b>	<b>38%</b>	<b>349,285</b>	<b>368,261</b>
<b>0-9 TOTAL</b>	1,081,175	43%	620,593	38%	625,207	38%	349,285	368,261
0+1 Food, beverages and tobacco	95,705	4%	91,561	6%	94,508	6%	52,969	55,774
2+4 Raw materials	12,616	0%	6,815	0%	5,933	0%	3,520	4,786
3 Mineral fuels, lubricants and related materials	190,321	8%	104,198	6%	131,745	8%	63,235	103,179
5 Chemicals	82,217	3%	66,198	4%	61,189	4%	36,254	35,394
7 Machinery and transport equipment	433,693	17%	191,098	12%	181,508	11%	103,056	91,941
6+8 Other manufactured goods	266,624	11%	160,724	10%	150,325	9%	90,251	76,471
<b>CEFTA</b>	<b>883,076</b>	<b>35%</b>	<b>648,702</b>	<b>39%</b>	<b>670,000</b>	<b>40%</b>	<b>370,897</b>	<b>435,730</b>
<b>0-9 TOTAL</b>	883,076	35%	648,702	39%	670,000	40%	370,897	435,730
0+1 Food, beverages and tobacco	266,511	11%	240,400	15%	239,359	14%	132,635	148,448
2+4 Raw materials	60,872	2%	38,894	2%	71,139	4%	37,686	46,007
3 Mineral fuels, lubricants and related materials	53,949	2%	46,187	3%	49,943	3%	21,793	62,494
5 Chemicals	75,306	3%	62,342	4%	60,430	4%	35,873	37,148
7 Machinery and transport equipment	69,439	3%	40,094	2%	39,306	2%	23,513	21,912
6+8 Other manufactured goods	356,954	14%	220,784	13%	209,822	13%	119,397	119,720
<b>USA</b>	<b>55,963</b>	<b>2%</b>	<b>17,604</b>	<b>1%</b>	<b>15,367</b>	<b>1%</b>	<b>8,613</b>	<b>7,841</b>
<b>0-9 TOTAL</b>	55,963	2%	17,604	1%	15,367	1%	8,613	7,841
0+1 Food, beverages and tobacco	779	0%	870	0%	875	0%	437	475
2+4 Raw materials	217	0%	104	0%	206	0%	132	164
3 Mineral fuels, lubricants and related materials	2,544	0%	36	0%	68	0%	49	72
5 Chemicals	3,307	0%	2,673	0%	3,304	0%	1,682	1,572
7 Machinery and transport equipment	43,506	2%	9,726	1%	6,673	0%	4,070	3,312
6+8 Other manufactured goods	5,611	0%	4,196	0%	4,240	0%	2,243	2,247
<b>Japan</b>	<b>40,602</b>	<b>2%</b>	<b>19,685</b>	<b>1%</b>	<b>19,822</b>	<b>1%</b>	<b>11,191</b>	<b>10,372</b>
<b>0-9 TOTAL</b>	40,602	2%	19,685	1%	19,822	1%	11,191	10,372
0+1 Food, beverages and tobacco	33	0%	10	0%	29	0%	20	14
2+4 Raw materials	2	0%	2	0%	4	0%	2	0
3 Mineral fuels, lubricants and related materials	99	0%	25	0%	16	0%	12	15
5 Chemicals	1,140	0%	1,136	0%	730	0%	413	68
7 Machinery and transport equipment	35,446	1%	16,253	1%	15,499	1%	8,787	7,870
6+8 Other manufactured goods	3,883	0%	2,258	0%	3,544	0%	1,957	2,404
<b>China</b>	<b>123,834</b>	<b>5%</b>	<b>90,343</b>	<b>5%</b>	<b>88,864</b>	<b>5%</b>	<b>48,080</b>	<b>58,063</b>
<b>0-9 TOTAL</b>	123,834	5%	90,343	5%	88,864	5%	48,080	58,063
0+1 Food, beverages and tobacco	1,204	0%	992	0%	853	0%	502	537
2+4 Raw materials	617	0%	569	0%	414	0%	229	197
3 Mineral fuels, lubricants and related materials	9	0%	4	0%	0	0%	0	2
5 Chemicals	4,643	0%	2,458	0%	2,665	0%	1,589	1,673
7 Machinery and transport equipment	53,288	2%	43,033	3%	38,122	2%	21,481	26,677
6+8 Other manufactured goods	64,074	3%	43,288	3%	46,809	3%	24,279	28,976

## Export of Montenegro by SITC sections

in EUR 1000

BREAKDOWN BY SITC SECTIONS	2008	2009	Index 2009 2008	2010	Index 2010 2009	Jan- July 2010	Jan- July 2011	Index Jan- July 2011 2010
<b>0-9 TOTAL</b>	<b>416,165</b>	<b>277,011</b>	<b>67</b>	<b>330,367</b>	<b>119</b>	<b>171,827</b>	<b>247,438</b>	<b>144</b>
<b>0 Food and live animals</b>	<b>16,093</b>	<b>18,409</b>	114	<b>23,930</b>	<b>130</b>	<b>10,986</b>	<b>11,391</b>	<b>104</b>
00 Live animals	4	13	319	9	67	9	12	143
01 Meat and meat preparations	5,006	5,549	111	5,140	93	2,691	2,479	92
02 Dairy products and eggs	47	1	1	7	679	0	60	
03 Fish and preparations	279	1,069	383	472	44	415	101	24
04 Cereal and cereal products	1,734	2,505	144	2,523	101	1,397	1,299	93
05 Vegetables and fruit	7,428	6,939	93	9,347	135	3,083	3,279	106
06 Sugars, sugar preparations and honey	278	301	108	302	100	230	462	200
07 Coffee, tea, cocoa, spices, and manufactures thereof	281	164	59	2,962		1,663	1,440	87
08 Feeding stuff for animals (not including unmilled cereals)	30	431	1456	118	27	77	56	73
09 Miscellaneous edible products and preparations	1,006	1,437	143	3,050	212	1,421	2,203	155
<b>1 Beverages and tobacco</b>	<b>24,606</b>	<b>21,749</b>	88%	<b>21,109</b>	<b>97</b>	<b>9,156</b>	<b>9,817</b>	<b>107</b>
11 Beverages	24,045	21,049	88	20,975	100	9,156	9,654	105
12 Tobacco and tobacco manufactures	561	699	125	134	19	0	163	
<b>2 Crude materials, inedible, except fuels</b>	<b>33,468</b>	<b>25,120</b>	75	<b>44,713</b>	<b>178</b>	<b>21,969</b>	<b>35,093</b>	<b>160</b>
21 Hides, skins and fur skins, raw	2,308	2,042	88	4,101	201	1,967	2,220	113
22 Oil-seeds and oleaginous fruits	24	13	55	0	0	0	0	200
23 Crude rubber	0	0	0	0	0	0	0	
24 Cork and wood	13,468	12,862	96	15,790	123	7,767	8,691	112
25 Pulp and waste paper	439	481	110	710	148	357	694	194
26 Textile fibres and their wastes	33	31	93	24	77	14	37	267
27 Crude fertilizers, and crude minerals	2,265	1,987	88	2,993	151	2,206	593	27
28 Metalliferous ores and metal scrap	14,815	7,468	50	20,911	280	9,568	22,713	237
29 Crude animal and vegetable materials, n.e.s.	117	236	202	183	78	88	145	163
<b>3 Mineral fuels, lubricants and related materials</b>	<b>12,502</b>	<b>8,375</b>	67	<b>33,286</b>	<b>397</b>	<b>18,496</b>	<b>39,167</b>	<b>212</b>
32 Coal, coke and briquettes	2,129	2,982	140	3,431	115	1,240	1,144	92
33 Petroleum, petroleum products and related materials	10,373	5,393	52	12,822	238	7,101	5,866	83
34 Gas, natural and manufactured	0	0	0	0	0	0	0	
35 Electric current	0	0	0	17,033	0	10,155	32,156	317
<b>4 Animal oils and fats</b>	<b>197</b>	<b>291</b>	147	<b>1,288</b>	<b>443</b>	<b>696</b>	<b>443</b>	<b>64</b>
41 Animal oils and fats	102	97	94	415	428	189	172	91
42 Fixed vegetable fats and oils	44	82	189	828		490	253	52
43 Animal or vegetable fats and oils, processed	51	112	218	44	40	17	18	110
<b>5 Chemicals</b>	<b>10,713</b>	<b>11,824</b>	110	<b>12,916</b>	<b>109</b>	<b>6,094</b>	<b>7,229</b>	<b>119</b>
51 Organic chemicals	12	76	612	133	174	63	4	6
52 Inorganic chemicals	38	92	244	60	66	53	15	29
53 Dyeing, tanning and colouring materials	65	196	300	837	427	66	1,171	
54 Medicinal and pharmaceutical products	8,421	9,094	108	8,906	98	4,368	4,477	102
55 Essential oils, perfume materials, toilet prep.	1,112	1,332	120	1,424	107	850	482	57
56 Fertilizers (other than those of group 272)	0	0	0	22	0	22	30	137
57 Plastics in primary forms	95	26	28	219	843	112	93	83
58 Plastics in non-primary forms	252	221	88	547	248	390	254	65
59 Chemicals and products n.e.s.	718	788	110	768	97	170	702	413

/countinue/

<b>BREAKDOWN BY SITC SECTIONS</b>	<b>2008</b>	<b>2009</b>	<b>Index 2009 2008</b>	<b>2010</b>	<b>Index 2010 2009</b>	<b>Jan- July 2010</b>	<b>Jan- July 2011</b>	<b>Index Jan- July 2011 2010</b>
<b>6 Manufactured goods classified chiefly by material</b>	<b>285,006</b>	<b>153,663</b>	<b>54</b>	<b>157,109</b>	<b>102</b>	<b>85,445</b>	<b>124,311</b>	<b>145</b>
61 Leather, leather manufactures and dressed furskins	1	13		168		166	264	159
62 Rubber manufactures	91	124	136	266	215	123	176	143
63 Cork and wood manufactures	1,918	671	35	746	111	399	543	136
64 Paper, paperboard and articles of paper pulp	923	903	98	898	99	591	572	97
65 Textile yarn, fabrics, made-up articles and related products	272	104	38	196	188	132	121	91
66 Non-metallic mineral manufactures	816	746	91	1,000	134	374	911	243
67 Iron and steel	95,858	32,810	34	19,400	59	11,281	7,790	69
68 Non-ferrous metals	178,147	113,166	64	130,792	116	70,188	111,825	159
69 Manufactures of metals	6,980	5,125	73	3,643	71	2,191	2,110	96
<b>7 Machinery and transport equipment</b>	<b>23,912</b>	<b>27,745</b>	<b>116</b>	<b>27,047</b>	<b>97</b>	<b>14,062</b>	<b>12,971</b>	<b>92</b>
71 Power-generating machinery and equipment	335	380	113	384	101	213	220	103
72 Machinery specialized for particular industries	2,208	3,521	159	3,762	107	1,701	1,685	99
73 Metalworking machinery	351	7,129		63	1	36	63	177
74 General industrial machinery and equipment	5,203	6,181	119	6,147	99	3,191	4,807	151
75 Office machines and data-processing machines	795	450	57	395	88	220	263	119
76 Telecommunications and sound-recording and reproducing apparatus and equipment	1,580	1,128	71	570	51	355	345	97
77 Electrical machinery, apparatus and appliances	5,172	3,642	70	5,582	153	2,643	2,008	76
78 Road vehicles	2,182	2,647	121	3,650	138	2,065	2,159	105
79 Other transport equipment	6,085	2,666	44	6,494	244	3,638	1,421	39
<b>8 Miscellaneous manufactured articles</b>	<b>9,669</b>	<b>9,511</b>	<b>98</b>	<b>8,969</b>	<b>94</b>	<b>4,923</b>	<b>4,217</b>	<b>86</b>
81 Prefabricated buildings; sanitary equipment	350	462	132	573	124	373	88	24
82 Furniture, and parts thereof	1,224	668	55	565	85	277	254	92
83 Travel goods, handbags and similar containers	51	69	137	41	60	14	52	369
84 Articles of apparel and clothing accessories	947	1,274	135	1,176	92	674	429	64
85 Footwear	561	477	85	356	75	83	248	298
87 Professional, scientific and controlling instruments	408	204	50	322	158	252	174	69
88 Photographic apparatus, equipment and supplies and optical goods	83	30	36	84	280	74	145	197
89 Miscellaneous manufactured articles	6,045	6,327	105	5,852	92	3,177	2,825	89
<b>9 Commodities and transactions not classified elsewhere in the SITC</b>	<b>0</b>	<b>324</b>	<b>0</b>	<b>0</b>	<b>0</b>	<b>0</b>	<b>2,800</b>	

## Import of Montenegro by SITC sections

in EUR 1000

BREAKDOWN BY SITC SECTIONS	2008	2009	Index 2009 2008	2010	Index 2010 2009	Jan- July 2010	Jan- July 2011	Index Jan- July 2011 2010
<b>0-9 TOTAL</b>	<b>2,529,741</b>	<b>1,654,170</b>	<b>65</b>	<b>1,657,329</b>	<b>100</b>	<b>927,685</b>	<b>1,017,296</b>	<b>110</b>
<b>0 Food and live animals</b>	<b>328,065</b>	<b>312,835</b>	<b>95</b>	<b>324,209</b>	<b>104</b>	<b>178,959</b>	<b>196,232</b>	<b>110</b>
00 Live animals	15,965	16,174	101	21,784	135	12,148	14,718	121
01 Meat and meat preparations	79,102	76,611	97	76,026	99	42,314	39,175	93
02 Dairy products and eggs	43,311	38,414	89	40,768	106	25,040	28,438	114
03 Fish and preparations	9,930	9,116	92	9,606	105	5,266	5,921	112
04 Cereal and cereal products	57,487	50,465	88	46,581	92	23,968	33,228	139
05 Vegetables and fruit	41,809	37,741	90	33,799	90	19,430	21,875	113
06 Sugars, sugar preparations and honey	10,745	9,667	90	9,948	103	4,905	6,522	133
07 Coffee, tea, cocoa, spices and manufactures thereof	33,344	39,111	117	47,669	122	25,226	22,768	90
08 Feeding stuff for animals (not including unmilled cereals)	13,628	11,943	88	13,670	114	7,082	8,914	126
09 Miscellaneous edible products and preparations	22,745	23,594	104	24,357	103	13,580	14,672	108
<b>1 Beverages and tobacco</b>	<b>77,395</b>	<b>66,878</b>	<b>86</b>	<b>63,930</b>	<b>96</b>	<b>35,503</b>	<b>36,437</b>	<b>103</b>
11 Beverages	56,290	46,411	82	46,352	100	26,117	28,698	110
12 Tobacco and tobacco manufactures	21,105	20,467	97	17,578	86	9,385	7,739	82
<b>2 Crude materials, inedible, except fuels</b>	<b>62,544</b>	<b>37,842</b>	<b>61</b>	<b>70,243</b>	<b>186</b>	<b>39,246</b>	<b>48,555</b>	<b>124</b>
21 Hides, skins and fur skins, raw	0	37	0	86	232	60	0	0
22 Oil-seeds and oleaginous fruits	428	519	121	810	156	410	455	111
23 Crude rubber	327	293	90	61	21	52	59	115
24 Cork and wood	11,265	5,780	51	7,337	127	4,003	4,077	102
25 Pulp and waste paper	4	7	159	6	79	1	7	580
26 Textile fibres and their wastes	437	626	143	430	69	270	325	120
27 Crude fertilizers, and crude minerals	7,902	3,917	50	3,398	87	2,008	1,503	75
28 Metalliferous ores and metal scrap	36,725	21,868	60	53,470	245	29,711	38,718	130
29 Crude animal and vegetable materials, n.e.s.	5,454	4,794	88	4,645	97	2,731	3,410	125
<b>3 Mineral fuels, lubricants and related materials</b>	<b>359,999</b>	<b>208,057</b>	<b>58</b>	<b>209,660</b>	<b>101</b>	<b>106,716</b>	<b>170,249</b>	<b>160</b>
32 Coal, coke and briquettes	1,206	526	44	333	63	196	276	141
33 Petroleum, petroleum products and related materials	230,427	130,964	57	166,165	127	87,221	111,588	128
34 Gas, natural and manufactured	14,057	8,418	60	12,890	153	6,773	6,915	102
35 Electric current	114,310	68,148	60	30,272	44	12,526	51,470	411
<b>4 Animal oils and fats</b>	<b>14,912</b>	<b>12,454</b>	<b>84</b>	<b>12,568</b>	<b>101</b>	<b>6,167</b>	<b>8,357</b>	<b>135</b>
41 Animal oils and fats	579	802	139	602	75	272	308	114
42 Fixed vegetable fats and oils	13,765	11,164	81	11,532	103	5,654	7,795	138
43 Animal or vegetable fats and oils, processed	568	488	86	434	89	242	253	105
<b>5 Chemicals</b>	<b>189,687</b>	<b>167,918</b>	<b>89</b>	<b>162,956</b>	<b>97</b>	<b>95,120</b>	<b>98,252</b>	<b>103</b>
51 Organic chemicals	2,349	2,511	107	2,030	81	1,345	1,249	93
52 Inorganic chemicals	15,488	7,771	50	4,917	63	2,668	2,603	98
53 Dyeing, tanning and colouring materials	27,095	21,153	78	19,629	93	11,767	12,258	104
54 Medicinal and pharmaceutical products	45,194	54,425	120	53,590	98	31,205	31,810	102
55 Essential oils, perfume materials, toilet prep.	40,688	38,510	95	40,169	104	22,459	24,642	110
56 Fertilizers (other than those of group 272)	2,571	1,775	69	2,131	120	1,727	2,142	124
57 Plastics in primary forms	4,362	2,449	56	2,455	100	1,455	1,548	106
58 Plastics in non-primary forms	31,905	23,477	74	21,295	91	12,668	11,461	90
59 Chemicals and products n.e.s.	20,035	15,846	79	16,740	106	9,824	10,538	107

/continue/

<b>BREAKDOWN BY SITC SECTIONS</b>	<b>2008</b>	<b>2009</b>	<b>Index 2009 2008</b>	<b>2010</b>	<b>Index 2010 2009</b>	<b>Jan- July 2010</b>	<b>Jan- July 2011</b>	<b>Index Jan- July 2011 2010</b>
<b>6 Manufactured goods classified chiefly by material</b>	<b>471,047</b>	<b>274,772</b>	<b>58</b>	<b>265,841</b>	<b>97</b>	<b>153,254</b>	<b>148,030</b>	<b>97</b>
61 Leather, leather manufactures and dressed furskins	521	317	61	204	64	110	111	101
62 Rubber manufactures	16,971	11,266	66	14,777	131	7,440	7,327	98
63 Cork and wood manufactures	29,120	17,519	60	16,948	97	9,848	9,563	97
64 Paper, paperboard and articles of paper pulp	28,279	26,085	92	27,822	107	15,570	15,981	103
65 Textile yarn, fabrics, made-up articles and related products	17,014	11,331	67	12,660	112	7,231	7,383	102
66 Non-metallic mineral manufactures	148,961	87,197	59	77,953	89	46,763	42,114	90
67 Iron and steel	81,641	37,017	45	37,330	101	22,227	23,759	107
68 Non-ferrous metals	22,414	12,930	58	13,471	104	7,098	6,931	98
69 Manufactures of metals	126,126	71,110	56	64,676	91	36,967	34,861	94
<b>7 Machinery and transport equipment</b>	<b>714,719</b>	<b>357,735</b>	<b>50</b>	<b>340,607</b>	<b>95</b>	<b>197,100</b>	<b>179,745</b>	<b>91</b>
71 Power-generating machinery and equipment	12,010	12,968	108	7,842	60	3,044	3,161	104
72 Machinery specialized for particular industries	96,660	19,604	20	28,594	146	16,906	14,381	85
73 Metalworking machinery	11,293	2,403	21	2,152	90	1,559	2,246	144
74 General industrial machinery and equipment	98,413	58,484	59	56,990	97	34,960	30,949	89
75 Office machines and data-processing machines	33,513	22,011	66	24,729	112	13,515	11,300	84
76 Telecommunications and sound-recording and reproducing apparatus and equipment	58,102	38,125	66	35,489	93	18,983	21,970	116
77 Electrical machinery, apparatus and appliances	126,861	87,715	69	81,175	93	47,676	34,979	73
78 Road vehicles	243,276	88,583	36	94,456	107	52,963	55,646	105
79 Other transport equipment	34,590	27,841	80	9,179	33	7,495	5,112	68
<b>8 Miscellaneous manufactured articles</b>	<b>311,327</b>	<b>215,677</b>	<b>69</b>	<b>207,315</b>	<b>96</b>	<b>115,620</b>	<b>130,721</b>	<b>113</b>
81 Prefabricated buildings; sanitary equipment	25,842	12,204	47	11,831	97	6,698	6,573	98
82 Furniture, and parts thereof	70,039	44,209	63	41,379	94	24,672	26,616	108
83 Travel goods, handbags and similar containers	6,516	4,879	75	4,649	95	2,525	3,094	123
84 Articles of apparel and clothing accessories	58,661	43,219	74	42,745	99	21,594	24,263	112
85 Footwear	33,437	25,147	75	23,309	93	12,025	14,606	121
87 Professional, scientific and controlling instruments	17,302	16,943	98	13,656	81	6,970	8,912	128
88 Photographic apparatus, equipment and supplies and optical goods	8,187	3,910	48	3,699	95	2,172	2,843	131
89 Miscellaneous manufactured articles	91,344	65,166	71	66,046	101	38,963	43,815	112
<b>9 Commodities and transactions not classified elsewhere in the SITC</b>	<b>45</b>	<b>2</b>	<b>5</b>	<b>0</b>	<b>0</b>	<b>0</b>	<b>718</b>	

## METHODOLOGICAL EXPLANATIONS

External trade statistics represents an important source of primary importance for a number of institutions creating economy policy, as well as for decision making at the state and certain entities level. It serves as the basic source of information for estimation of balance of payments and national accounts of country, for preparation multilateral and bilateral negotiations, enterprises to explore market and to define their position in it.

Data collection on external trade is based on recommendations UN and EU statistics contained in the following publications:

- International merchandise Trade Statistics, Concept and Definitions, UN
- Statistics on the Trade of Goods, User Guide, EUROSTAT

It is harmonised with regulations of COMMUNITY LEGISLATION applicable to the STATISTICS RELATING TO THE TRADE OF GOODS, related to EXTRASTAT

- Council Regulation 1172/95
- Commission Regulation (EC) No. 1917/2000
- Regulation (EC) No. 471/2009 of the European Parliament and Council
- Commission Regulation (EC) No. 113/2010

### **Data source**

Data source for external trade of Montenegro is customs declarations on export and import of goods. Customs declaration is a document applied in customs procedure. It contains data important for the very customs procedure, but also for needs of statistics and other users. MONSTAT takes over the data in electronic form from Customs Administration of Montenegro with monthly periodicity, and further processes and publishes the results.

Since 2002 under customs procedure when using tariffs of products, Combined Nomenclature harmonised with EU Combined Nomenclature is used. It is published in the Official Gazette of Montenegro for the current year.

### **External trade coverage**

**Export** covers the goods leaving the statistical territory of Montenegro in accordance with the following customs procedures:

- a) Export
- b) Outward processing
- c) Re-export that was in the procedure of inward processing and manufacture of goods under customs control

**Import** covers all goods entering the statistical territory of Montenegro in accordance with the following customs procedures:

- a) Import for free trade
- b) Inward processing
- c) Manufacture of goods under customs control

Classification of export-import is performed in accordance with Nomenclature for External Trade Statistics which is based on Standard International Trade Classification (SITC), rev. 3. The code of every products classified by SITC has the following structure: first number means sector, second one – section, third – group, fourth – subgroup, and fifth number – position, i.e. product.

**Published by Statistical Office of Montenegro (MONSTAT)**  
81000 Podgorica, IV Proleterske 2, Phone: (+382) 20 230-811, Fax:(+382) 20 230-814

The release prepared by:

**Bojana Radevic and Maja Vucinic**  
e-mail: [bojana.radevic@monstat.org](mailto:bojana.radevic@monstat.org) and [maja.vucinic@monstat.org](mailto:maja.vucinic@monstat.org)  
Phone: +382 20 230 805