

## External trade of Montenegro January-June 2012

**The total external trade** of Montenegro for period January-June 2012 is EUR 1 047.3 million, indicating the drop of 0.9% in comparison with the same month of the previous year.

The value of **exports of goods** is EUR 182.3 million, what is 14.6% less compared to the same period of previous year, **and imports** are EUR 864.9 million, what is 2.6% higher compared to the same period of previous year.

**The coverage of import by export** is 21.1%, and it is lower compared to the coverage for the same period of previous year, when it was 25.3%.

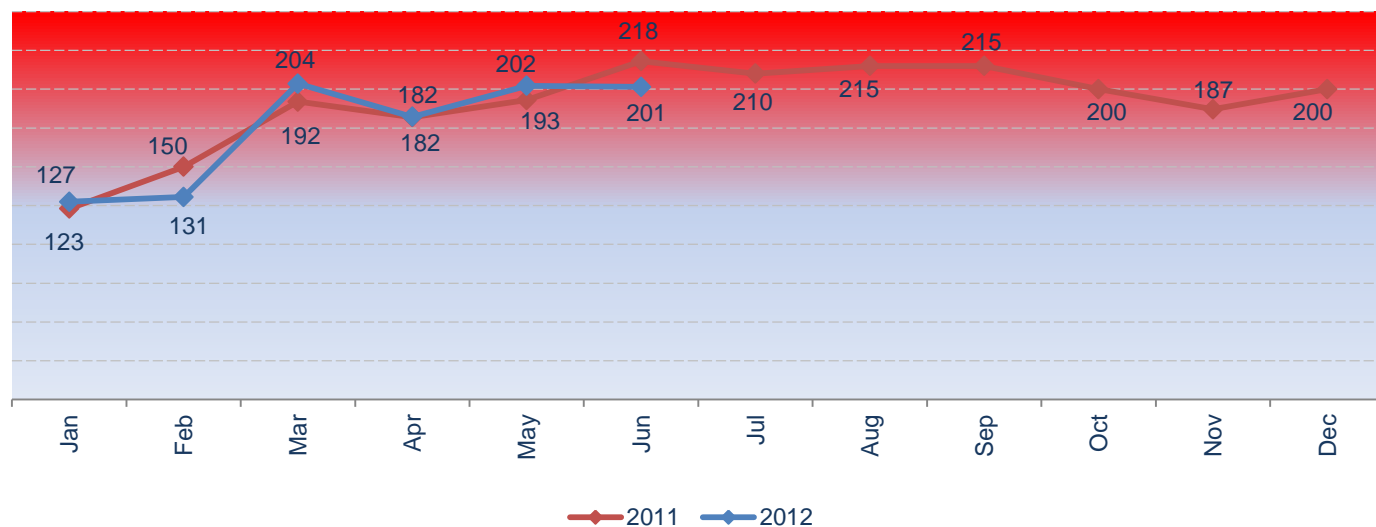
**Structure of exports** in accordance with the SITC (Standard International Trade Classification) the most present products are **Manufactured goods classified chiefly by material**– Section 6, in amount of EUR 92.3 million (consisted of: Non-ferrous metals with the amount of EUR 75.8 million, and Iron and steel with EUR 12.3 million).

**The structure of imports** in accordance with the classification SITC (Standard International Trade Classification) is presented mostly products of Section 3 – Mineral fuels, lubricants and related materials with EUR 170.1 million (consisted of: Petroleum, petroleum products and related materials with EUR 100.8 million, and Electric current with EUR 62.7 million).

**Main trading partners in exports** with individual basis were: Croatia (EUR 47.2 million), Serbia (EUR 36.8 million) and Bosnia and Herzegovina (EUR 12.7 million).

**Main trading partners in imports** with individual basis were: Serbia (EUR 249.2 million), Greece (EUR 73 million), and Bosnia and Herzegovina (EUR 59.8 million). The highest external trade trend was with CEFTA and EU countries.

### Chapter 1. External trade trend of Montenegro in mil. EUR



**Table 1. External trade trend of Montenegro 2007 – June 2012**

in EUR 1000

PERIOD	IMPORT	EXPORT	TRADE BALANCE
<b>2007</b>	<b>2 073 093</b>	<b>454 739</b>	<b>-1 618 355</b>
<b>2008</b>	<b>2 529 741</b>	<b>416 165</b>	<b>-2 113 576</b>
<b>2009</b>	<b>1 654 170</b>	<b>277 011</b>	<b>-1 377 159</b>
<b>2010</b>			
January	74 054	13 566	-60 488
February	107 057	18 624	-88 434
March	129 785	23 591	-106 194
April	136 810	26 030	-110 780
May	138 117	36 010	-102 107
June	168 997	24 372	-144 625
July	172 865	29 635	-143 230
August	155 789	29 794	-125 995
September	142 459	27 480	-114 979
October	138 681	28 799	-109 882
November	143 638	42 931	-100 706
December	149 078	29 535	-119 542
<b>2011</b>			
January	85 414	37 466	-47 948
February	117 803	31 708	-86 096
March	149 762	42 032	-107 730
April	145 845	35 787	-110 058
May	159 530	33 502	-126 028
June	184 974	32 973	-152 001
July	175 859	33 999	-141 861
August	172 498	42 007	-130 491
September	173 055	42 381	-130 675
October	151 577	48 328	-103 249
November	143 562	37 882	-105 680
December	163 457	36 317	-127 140
<b>2012</b>			
January	99 921	27 473	-72 448
February	106 591	23 911	-82 679
March	170 177	33 341	-136 836
April	150 956	31 214	-119 742
May	167 711	34 502	-133 208
June	169 595	31 892	-137 703

**Table 2. Import of Montenegro by continents**

in EUR 1000

Period	World	Europe	Africa	America	Asia	Oceania and polar region
<b>2007</b>	<b>2 073 093</b>	<b>1 809 699</b>	<b>2 560</b>	<b>66 926</b>	<b>193 421</b>	<b>487</b>
<b>2008</b>	<b>2 529 741</b>	<b>2 214 291</b>	<b>4 180</b>	<b>87 041</b>	<b>223 934</b>	<b>295</b>
<b>2009</b>	<b>1 654 170</b>	<b>1 450 892</b>	<b>2 708</b>	<b>56 159</b>	<b>143 926</b>	<b>485</b>
<b>2010</b>						
January	74 054	63 591	89	3 806	6 538	30
February	107 057	92 902	160	4 048	9 916	31
Mach	129 785	111 141	296	5 065	13 226	57
April	136 810	120 981	239	3 481	12 057	51
May	138 117	121 629	166	4 594	11 652	75
June	168 997	150 137	1 507	3 289	13 966	98
July	172 865	152 593	486	6 006	13 641	139
August	155 789	137 354	362	4 840	13 188	46
September	142 459	122 048	654	5 375	14 354	28
October	138 681	119 400	162	3 411	15 683	25
November	143 638	126 433	243	4 501	12 455	7
December	149 078	130 202	177	5 457	13 232	11
<b>2011</b>						
January	85 414	74 132	159	2 824	8 293	6
February	117 803	102 678	269	3 731	11 124	1
Mach	149 762	129 079	228	3 742	16 607	106
April	145 845	126 913	1 921	3 127	13 864	20
May	159 530	140 087	1 515	3 888	13 943	97
June	184 974	157 584	7 966	4 451	14 953	20
July	175 859	157 890	358	4 353	13 212	46
August	172 498	152 431	360	5 188	14 500	19
September	173 055	151 113	253	4 201	17 463	24
October	151 577	133 216	233	3 656	14 432	40
November	143 562	123 106	285	5 449	14 712	10
December	163 457	144 219	287	5 932	12 985	33
<b>2012</b>						
January	99 921	88 122	199	3 823	7 756	21
February	106 591	92 593	185	3 462	10 330	21
March	170 177	147 342	280	5 935	16 590	30
April	150 956	132 522	320	2 949	15 149	17
May	167 711	148 904	247	4 030	14 470	59
June	169 595	151 119	426	2 875	15 139	36

**Table 3. Share of external trade by continents**

Year	World	Europe	Africa	America	Asia	Oceania and polar region
<b>2007</b>	100%	87%	0%	3%	9%	0%
<b>2008</b>	100%	87%	0%	3%	9%	0%
<b>2009</b>	100%	88%	0%	3%	9%	0%
<b>2010</b>	100%	87%	0%	3%	9%	0%
<b>2011</b>	100%	87%	1%	3%	9%	0%

**Table 4. Exports of Montenegro by continents**

Period	in EUR 1000					
	World	Europe	Africa	America	Asia	Oceania and polar region
<b>2007</b>	<b>454 739</b>	<b>450 774</b>	<b>1 066</b>	<b>2 001</b>	<b>890</b>	<b>7</b>
<b>2008</b>	<b>416 165</b>	<b>412 042</b>	<b>1 116</b>	<b>1 099</b>	<b>1 902</b>	<b>7</b>
<b>2009</b>	<b>277 011</b>	<b>265 753</b>	<b>958</b>	<b>7 559</b>	<b>2 741</b>	<b>0</b>
<b>2010</b>						
January	13 566	13 491	13	8	54	0
February	18 624	18 569	20	29	6	0
Mach	23 591	23 172	81	50	279	8
April	26 030	24 529	3	173	1 325	0
May	36 010	35 381	67	9	543	10
June	24 372	23 714	473	51	1	133
July	29 635	29 468	45	12	109	0
August	29 794	29 615	0	6	166	8
September	27 480	27 023	9	63	371	15
October	28 799	28 543	0	90	166	0
November	42 931	42 707	35	42	147	0
December	29 535	28 998	46	85	406	0
<b>2011</b>						
January	37 466	37 214	55	38	148	11
February	31 708	31 196	0	47	457	8
Mach	42 032	41 842	83	35	65	7
April	35 787	35 650	62	52	7	16
May	33 502	33 231	0	63	208	0
June	32 973	32 446	207	25	278	17
July	33 999	33 886	5	81	12	15
August	42 007	41 419	5	107	454	24
September	42 381	41 904	2	29	445	0
October	48 328	39 403	8 414	113	386	12
November	37 882	37 131	568	29	153	0
December	36 317	35 167	628	177	345	0
<b>2012</b>						
January	27 473	27 280	0	83	97	13
February	23 911	23 713	117	1	81	0
March	33 341	33 036	1	40	264	0
April	31 214	30 770	6	173	265	0
May	34 502	33 324	3	85	1 080	10
June	31 892	30 667	9	81	1 134	0

**Table 5. Share of external trade by continents**

Year	World	Europe	Africa	America	Asia	Oceania and polar region
<b>2007</b>	100%	99%	0%	0%	0%	0%
<b>2008</b>	100%	99%	0%	0%	0%	0%
<b>2009</b>	100%	96%	0%	3%	1%	0%
<b>2010</b>	100%	98%	0%	0%	1%	0%
<b>2011</b>	100%	97%	2%	0%	1%	0%

**Table 6. External trade of Montenegro by continents and selected countries  
for period January-June 2011/2012**

in EUR 1 000										
TRADING PARTNERS	EXPORT				IMPORT				TRADE BALANCE	
	Jan-June 2011		Jan-June 2012		Jan-June 2011		Jan-June 2012		Jan-June 2011	Jan-June 2012
<b>WORLD</b>	100%	213 467	100%	182 334	100%	843 328	100%	864 950	-629 861	-682 616
<b>Europe</b>	99%	211 579	98%	178 790	87%	730 474	88%	760 601	-518 895	-581 811
<b>EU-27</b>	61%	130 302	33%	59 338	40%	335 102	39%	338 618	-204 800	-279 280
<b>CEFTA</b>	33%	70 937	60%	109 051	44%	369 635	44%	383 537	-298 698	-274 486
<b>Africa</b>	0%	407	0%	136	1%	12 059	0%	1 658	-11 652	-1 522
<b>Asia</b>	1%	1 162	2%	2 922	9%	78 783	9%	79 435	-77 621	-76 513
<b>America</b>	0%	261	0%	463	3%	21 763	3%	23 072	-21 502	-22 609
<b>Oceania</b>	0%	59	0%	23	0%	249	0%	183	-190	-160
<b>USA</b>	0%	229	0%	360	1%	6 764	1%	6 708	-6 535	-6 348
<b>China</b>	0%	68	1%	1 898	6%	49 859	6%	51 139	-49 791	-49 241
<b>Russia</b>	0%	949	2%	3 259	0%	2 318	1%	8 273	-1 369	-5 014
<b>Switzerland</b>	2%	4 311	1%	1 456	1%	8 538	1%	12 798	-4 227	-11 342
<b>Japan</b>	0%	508	0%	697	1%	9 033	1%	7 605	-8 525	-6 908
<b>Turkey</b>	2%	4 605	3%	5 436	1%	12 183	2%	14 800	-7 578	-9 364
<b>Brazil</b>	0%	1	0%	0	1%	10 772	1%	8 183	-10 771	-8 183

**Table 7. External trade by EU-27 countries and countries under CEFTA agreement**

in EUR 1 000											
TRADING PARTNERS	%	EXPORT			%	IMPORT			TRADE BALANCE		
		2011	2011 Jan-June	2012 Jan-June		2011	2011 Jan-June	2012 Jan-June	2011	2011 Jan-June	2012 Jan-June
<b>WORLD</b>	<b>100</b>	<b>454 381</b>	<b>213 467</b>	<b>182 334</b>	<b>100</b>	<b>1 823 337</b>	<b>843 328</b>	<b>864 950</b>	<b>-1 368 956</b>	<b>-629 861</b>	<b>-682 616</b>
<b>EU-27</b>	<b>50</b>	<b>227 459</b>	<b>130 302</b>	<b>59 338</b>	<b>39</b>	<b>714 369</b>	<b>335 102</b>	<b>338 618</b>	<b>-486 910</b>	<b>-204 801</b>	<b>-279 280</b>
Austria	1	5 211	3 534	1 744	2	41 413	19 611	17 355	-36 202	-16 076	-15 612
Belgium	0	367	162	142	0	6 667	3 570	4 087	-6 300	-3 408	-3 945
Bulgaria	0	10	6	238	0	8 922	4 576	3 775	-8 912	-4 570	-3 537
Czech Republic	1	5 571	5 126	653	1	20 725	7 691	10 432	-15 154	-2 565	-9 779
Denmark	0	22	13	1	0	3 351	1 469	1 603	-3 330	-1 456	-1 602
Estonia	0	0	0	50	0	140	91	64	-140	-91	-14
Finland	0	1 596	238	251	0	1 558	1 089	338	38	-851	-87
France	0	1 753	789	1 187	2	31 622	14 892	10 848	-29 869	-14 103	-9 662
Greece	9	39 285	33 760	3 282	8	144 704	68 118	73 013	-105 418	-34 358	-69 731
Netherlands	1	3 246	1 709	1 571	2	27 573	13 478	15 286	-24 327	-11 769	-13 715
Ireland	0	0	0	0	0	2 239	1 024	1 301	-2 239	-1 024	-1 301
Italy	7	31 064	20 629	5 914	6	117 519	52 810	56 126	-86 455	-32 181	-50 212
Cyprus	0	188	96	20	0	614	367	278	-426	-271	-258
Latvia	0	54	0	0	0	104	66	39	-49	-66	-39
Lithuania	0	0	0	0	0	62	14	45	-62	-14	-45
Luxembourg	0	434	413	51	0	293	126	160	141	287	-108
Hungary	17	76 859	44 572	12 652	1	17 139	8 407	7 924	59 720	36 164	4 729
Malta	0	177	97	43	0	2	1	1	175	96	42
Germany	5	20 508	2 353	10 814	6	110 813	52 227	55 254	-90 305	-49 873	-44 440
Poland	1	3 737	1 486	2 415	1	13 529	5 796	5 203	-9 792	-4 310	-2 788
Portugal	0	0	0	0	0	575	357	244	-575	-357	-244
Romania	0	473	30	2 148	2	32 903	16 543	14 954	-32 430	-16 513	-12 806
Slovakia	0	408	283	103	1	9 149	5 246	2 177	-8 741	-4 963	-2 074
Slovenia	7	30 293	12 450	11 782	4	81 085	36 837	35 279	-50 791	-24 388	-23 497
Spain	0	314	293	1	1	22 965	10 225	10 858	-22 651	-9 932	-10 857
Sweden	0	1 465	592	1 336	0	5 046	3 143	1 838	-3 581	-2 551	-502
United Kingdom	1	4 425	1 670	2 942	1	13 658	7 327	10 137	-9 234	-5 658	-7 196
<b>CEFTA</b>	<b>40</b>	<b>183 590</b>	<b>70 937</b>	<b>109 051</b>	<b>45</b>	<b>818 948</b>	<b>369 635</b>	<b>383 537</b>	<b>-635 358</b>	<b>-298 698</b>	<b>-274 486</b>
Albania	2	10 360	6 598	2 646	1	12 721	6 438	6 850	-2 360	160	-4 204
Bosnia and Herzegovina	5	22 412	9 014	12 668	8	142 507	64 793	59 790	-120 095	-55 779	-47 122
Macedonia	0	1 417	419	958	1	27 158	12 101	12 361	-25 741	-11 682	-11 403
Moldavia	0	0	0	0	0	146	75	60	-146	-75	-60
Croatia	10	45 892	4 369	47 167	5	92 777	41 492	53 425	-46 885	-37 123	-6 258
Serbia	18	79 820	42 677	36 795	30	541 456	243 833	249 247	-461 636	-201 156	-212 453
UMNIK Kosovo	5	23 688	7 860	8 818	0	2 182	903	1 804	21 505	6 958	7 013
<b>Other countries</b>	<b>10</b>	<b>43 332</b>	<b>12 228</b>	<b>13 946</b>	<b>16</b>	<b>290 020</b>	<b>138 590</b>	<b>142 795</b>	<b>-246 688</b>	<b>-126 363</b>	<b>-128 850</b>

**Table 8. External trade of Montenegro with EU-27, USA, Japan, and China**

Period	EU-27		USA		JAPAN		CHINA	
	Value in thous. euro	%	Value in thous. euro	%	Value in thous. euro	%	Value in thous. euro	%
<b>EXPORT</b>								
<b>2008</b>	<b>258 800</b>	<b>62</b>	<b>892</b>	<b>0</b>	<b>145</b>	<b>0</b>	<b>152</b>	<b>0</b>
<b>2009</b>	<b>133 827</b>	<b>48</b>	<b>7 407</b>	<b>3</b>	<b>12</b>	<b>0</b>	<b>95</b>	<b>0</b>
<b>2010</b>	<b>184 817</b>	<b>56</b>	<b>461</b>	<b>0</b>	<b>544</b>	<b>0</b>	<b>149</b>	<b>0</b>
<b>2011</b>								
January	29 314	78	38	0	147	0	0	0
February	13 824	44	37	0	0	0	1	0
Mach	26 609	63	35	0	65	0	0	0
April	22 230	62	32	0	0	0	3	0
May	20 338	61	61	0	141	0	63	0
June	17 987	55	25	0	155	0	0	0
July	11 152	33	11	0	0	0	0	0
August	21 933	52	91	0	239	1	154	0
September	22 791	54	29	0	222	1	17	0
October	22 879	47	68	0	163	0	147	0
November	11 388	30	29	0	0	0	89	0
December	7 015	19	152	0	0	0	273	1
<b>2012</b>								
January	8 945	33	83	0	97	0	0	0
February	7 555	32	1	0	0	0	12	0
Mach	8 231	25	17	0	149	0	103	0
April	10 438	33	173	1	74	0	9	0
May	14 111	41	13	0	234	1	846	2
June	10 058	32	73	0	143	0	927	3
<b>IMPORT</b>								
<b>2008</b>	<b>1 081 175</b>	<b>43</b>	<b>55 963</b>	<b>2</b>	<b>40 602</b>	<b>2</b>	<b>123 834</b>	<b>5</b>
<b>2009</b>	<b>620 593</b>	<b>38</b>	<b>17 604</b>	<b>1</b>	<b>19 685</b>	<b>1</b>	<b>90 343</b>	<b>5</b>
<b>2010</b>	<b>625 207</b>	<b>38</b>	<b>15 367</b>	<b>1</b>	<b>19 822</b>	<b>1</b>	<b>88 864</b>	<b>5</b>
<b>2011</b>								
January	33 231	39	923	1	1 191	1	5 015	6
February	48 347	41	917	1	1 468	1	6 372	5
Mach	60 200	40	1 218	1	2 055	1	11 024	7
April	56 646	39	1 164	1	1 542	1	8 428	6
May	68 453	43	1 191	1	1 406	1	9 170	6
June	68 227	37	1 351	1	1 371	1	9 849	5
July	67 685	38	1 081	1	1 344	1	8 271	5
August	63 320	37	1 511	1	1 343	1	8 991	5
September	67 655	39	943	1	2 102	1	10 414	6
October	58 515	39	854	1	1 588	1	9 156	6
November	57 263	40	1 527	1	2 493	2	8 795	6
December	64 829	40	1 279	1	1 747	1	7 595	5
<b>2012</b>								
January	40 566	41	678	1	886	1	4 829	5
February	42 080	39	688	1	1 174	1	6 596	6
March	67 442	40	1 166	1	1 403	1	10 359	6
April	57 916	38	1 238	1	1 249	1	9 652	6
May	67 857	40	1 291	1	1 500	1	9 337	6
June	62 758	37	1 647	1	1 394	1	10 366	6

**Table 9. Export classified by SITC products for EU, CEFTA, USA, Japan, and China**

SITC CLASSIFICATION	in EUR 1000							
	2009		2010		2011		Jan-June 2011	Jan-June 2012
<b>WORLD</b>	<b>277 011</b>	<b>100%</b>	<b>330 367</b>	<b>100%</b>	<b>454 381</b>	<b>100%</b>	<b>213 467</b>	<b>182 334</b>
<b>0-9 TOTAL</b>	277 011	100%	330 367	100%	454 381	100%	213 467	182 334
0+1 Food, beverages and tobacco	40 158	14%	45 039	14%	50 662	11%	16 854	17 331
2+4 Raw materials	25 410	9%	46 000	14%	65 626	14%	30 291	27 136
3 Mineral fuels, lubricants and related materials	8 375	3%	33 286	10%	62 957	14%	36 805	21 430
5 Chemicals	11 824	4%	12 916	4%	12 083	3%	6 252	6 043
7 Machinery and transport equipment	27 745	10%	27 047	8%	23 899	5%	11 022	12 091
6+8 Other manufactured goods	163 174	59%	166 078	50%	236 353	52%	109 445	96 147
<b>EU-27</b>	<b>133 827</b>	<b>48%</b>	<b>184 817</b>	<b>56%</b>	<b>227 459</b>	<b>50%</b>	<b>130 302</b>	<b>59 338</b>
<b>0-9 TOTAL</b>	133 827	48%	184 817	56%	227 459	50%	130 302	59 338
0+1 Food, beverages and tobacco	6 159	2%	5 485	2%	6 221	1%	930	1 220
2+4 Raw materials	9 056	3%	18 179	6%	26 804	6%	12 785	11 632
3 Mineral fuels, lubricants and related materials	5 286	2%	18 355	6%	16 351	4%	9 894	3 960
5 Chemicals	113	0%	219	0%	356	0%	181	373
7 Machinery and transport equipment	9 062	3%	9 558	3%	10 552	2%	5 306	6 920
6+8 Other manufactured goods	104 151	38%	133 023	40%	164 375	36%	98 406	33 211
<b>CEFTA</b>	<b>127 946</b>	<b>46%</b>	<b>130 521</b>	<b>40%</b>	<b>183 590</b>	<b>40%</b>	<b>70 937</b>	<b>109 051</b>
<b>0-9 TOTAL</b>	127 946	46%	130 521	40%	183 590	40%	70 937	109 051
0+1 Food, beverages and tobacco	31 618	11%	36 493	11%	39 934	9%	14 592	13 381
2+4 Raw materials	15 171	5%	22 516	7%	25 830	6%	12 676	8 328
3 Mineral fuels, lubricants and related materials	3 082	1%	13 192	4%	34 939	8%	22 813	16 296
5 Chemicals	11 626	4%	12 695	4%	11 673	3%	6 022	5 650
7 Machinery and transport equipment	9 970	4%	14 478	4%	10 296	2%	4 426	3 360
6+8 Other manufactured goods	56 154	20%	31 147	9%	60 917	13%	10 408	61 901
<b>USA</b>	<b>7 407</b>	<b>3%</b>	<b>461</b>	<b>0%</b>	<b>610</b>	<b>0%</b>	<b>229</b>	<b>360</b>
<b>0-9 TOTAL</b>	7 407	3%	461	0%	610	0%	229	360
0+1 Food, beverages and tobacco	239	0%	284	0%	457	0%	157	136
2+4 Raw materials	6	0%	3	0%	11	0%	3	0
3 Mineral fuels, lubricants and related materials	0	0%	0	0%	0	0%	0	0
5 Chemicals	0	0%	0	0%	0	0%	0	0
7 Machinery and transport equipment	7 160	3%	140	0%	59	0%	47	115
6+8 Other manufactured goods	2	0%	34	0%	83	0%	22	108
<b>Japan</b>	<b>12</b>	<b>0%</b>	<b>544</b>	<b>0%</b>	<b>1 132</b>	<b>0%</b>	<b>508</b>	<b>697</b>
<b>0-9 TOTAL</b>	12	0%	544	0%	1 132	0%	508	697
0+1 Food, beverages and tobacco	0	0%	0	0%	0	0%	0	0
2+4 Raw materials	0	0%	0	0%	0	0%	0	113
3 Mineral fuels, lubricants and related materials	0	0%	0	0%	0	0%	0	0
5 Chemicals	0	0%	0	0%	0	0%	0	0
7 Machinery and transport equipment	12	0%	544	0%	1 121	0%	508	583
6+8 Other manufactured goods	0	0%	0	0%	11	0%	0	0
<b>China</b>	<b>95</b>	<b>0%</b>	<b>149</b>	<b>0%</b>	<b>748</b>	<b>0%</b>	<b>68</b>	<b>1 898</b>
<b>0-9 TOTAL</b>	95	0%	149	0%	748	0%	68	1 898
0+1 Food, beverages and tobacco	51	0%	107	0%	746	0%	67	290
2+4 Raw materials	22	0%	0	0%	0	0%	0	1 536
3 Mineral fuels, lubricants and related materials	0	0%	0	0%	0	0%	0	0
5 Chemicals	0	0%	0	0%	0	0%	0	2
7 Machinery and transport equipment	0	0%	11	0%	2	0%	1	71
6+8 Other manufactured goods	23	0%	31	0%	0	0%	0	0



**Table 10. Import classified by SITC products for EU, CEFTA, USA, Japan, and China**

in EUR 1 000								
SITC CLASSIFICATION	2009		2010		2011		Jan-June 2011	Jan-June 2012
<b>WORLD</b>	<b>1 654 170</b>	<b>100%</b>	<b>1 657 329</b>	<b>100%</b>	<b>1 823 337</b>	<b>100%</b>	<b>843 328</b>	<b>864 950</b>
<b>0-9 TOTAL</b>	1 654 170	100%	1 657 329	100%	1 823 337	100%	843 328	864 950
0+1 Food, beverages and tobacco	379 713	23%	388 139	23%	417 706	23%	186 223	186 406
2+4 Raw materials	50 295	3%	82 811	5%	99 263	5%	47 519	41 279
3 Mineral fuels, lubricants and related materials	208 057	13%	209 660	13%	330 590	18%	138 795	170 172
5 Chemicals	167 918	10%	162 956	10%	169 589	9%	82 687	80 526
7 Machinery and transport equipment	357 735	22%	340 607	21%	315 905	17%	153 595	156 980
6+8 Other manufactured goods	490 449	30%	473 157	29%	489 549	27%	233 793	229 191
<b>EU-27</b>	<b>620 593</b>	<b>38%</b>	<b>625 207</b>	<b>38%</b>	<b>714 369</b>	<b>39%</b>	<b>335 102</b>	<b>338 618</b>
<b>0-9 TOTAL</b>	620 593	38%	625 207	38%	714 369	39%	335 102	338 618
0+1 Food, beverages and tobacco	91 561	6%	94 508	6%	108 606	6%	50 112	51 495
2+4 Raw materials	6 815	0%	5 933	0%	9 551	1%	3 877	4 516
3 Mineral fuels, lubricants and related materials	104 198	6%	131 745	8%	189 426	10%	85 125	88 612
5 Chemicals	66 198	4%	61 189	4%	75 514	4%	37 254	33 221
7 Machinery and transport equipment	191 098	12%	181 508	11%	172 376	9%	82 856	84 849
6+8 Other manufactured goods	160 724	10%	150 325	9%	158 164	9%	75 162	75 529
<b>CEFTA</b>	<b>648 702</b>	<b>39%</b>	<b>670 000</b>	<b>40%</b>	<b>818 948</b>	<b>45%</b>	<b>369 635</b>	<b>383 537</b>
<b>0-9 TOTAL</b>	648 702	39%	670 000	40%	818 948	45%	369 635	383 537
0+1 Food, beverages and tobacco	240 400	15%	239 359	14%	264 705	15%	117 279	117 372
2+4 Raw materials	38 894	2%	71 139	4%	81 239	4%	38 160	31 779
3 Mineral fuels, lubricants and related materials	46 187	3%	49 943	3%	130 380	7%	51 416	70 492
5 Chemicals	62 342	4%	60 430	4%	75 572	4%	36 259	37 190
7 Machinery and transport equipment	40 094	2%	39 306	2%	46 239	3%	22 246	24 933
6+8 Other manufactured goods	220 784	13%	209 822	13%	220 811	12%	104 276	101 770
<b>USA</b>	<b>17 604</b>	<b>1%</b>	<b>15 367</b>	<b>1%</b>	<b>13 959</b>	<b>1%</b>	<b>6 764</b>	<b>6 708</b>
<b>0-9 TOTAL</b>	17 604	1%	15 367	1%	13 959	1%	6 764	6 708
0+1 Food, beverages and tobacco	870	0%	875	0%	890	0%	428	531
2+4 Raw materials	104	0%	206	0%	215	0%	135	36
3 Mineral fuels, lubricants and related materials	36	0%	68	0%	83	0%	60	20
5 Chemicals	2 673	0%	3 304	0%	3 042	0%	1 383	1 652
7 Machinery and transport equipment	9 726	1%	6 673	0%	5 933	0%	2 809	3 096
6+8 Other manufactured goods	4 196	0%	4 240	0%	3 796	0%	1 949	1 373
<b>Japan</b>	<b>19 685</b>	<b>1%</b>	<b>19 822</b>	<b>1%</b>	<b>19 650</b>	<b>1%</b>	<b>9 033</b>	<b>7 605</b>
<b>0-9 TOTAL</b>	19 685	1%	19 822	1%	19 650	1%	9 033	7 605
0+1 Food, beverages and tobacco	10	0%	29	0%	17	0%	11	4
2+4 Raw materials	2	0%	4	0%	3	0%	0	0
3 Mineral fuels, lubricants and related materials	25	0%	16	0%	20	0%	9	23
5 Chemicals	1 136	0%	730	0%	447	0%	57	207
7 Machinery and transport equipment	16 253	1%	15 499	1%	14 815	1%	6 786	5 762
6+8 Other manufactured goods	2 258	0%	3 544	0%	4 348	0%	2 171	1 609
<b>China</b>	<b>90 343</b>	<b>5%</b>	<b>88 864</b>	<b>5%</b>	<b>103 080</b>	<b>6%</b>	<b>49 859</b>	<b>51 139</b>
<b>0-9 TOTAL</b>	90 343	5%	88 864	5%	103 080	6%	49 859	51 139
0+1 Food, beverages and tobacco	992	0%	853	0%	898	0%	433	445
2+4 Raw materials	569	0%	414	0%	398	0%	160	151
3 Mineral fuels, lubricants and related materials	4	0%	0	0%	2	0%	0	5
5 Chemicals	2 458	0%	2 665	0%	2 852	0%	1 409	2 184
7 Machinery and transport equipment	43 033	3%	38 122	2%	45 215	2%	23 240	21 695
6+8 Other manufactured goods	43 288	3%	46 809	3%	53 714	3%	24 616	26 660

**Table 11. Export of Montenegro by SITC sections**

in EUR 1 000

<b>BREAKDOWN BY SITC SECTIONS</b>	<b>2009</b>	<b>2010</b>	<b>Index 2010 2009</b>	<b>2011</b>	<b>Index 2011 2010</b>	<b>Jan-June 2011</b>	<b>Jan-June 2012</b>	<b>Index Jan-Jun12 Jan-Jun11</b>
<b>0-9 TOTAL</b>	<b>277 011</b>	<b>330 367</b>	<b>119</b>	<b>454 381</b>	<b>138</b>	<b>213 467</b>	<b>182 334</b>	<b>85</b>
<b>0 Food and live animals</b>	<b>18 409</b>	<b>23 930</b>	<b>130</b>	<b>27 583</b>	<b>115</b>	<b>8 707</b>	<b>9 351</b>	<b>107</b>
00 Live animals	13	9	69	12	138	12	4	31
01 Meat and meat preparations	5 549	5 140	93	5 223	102	2 132	2 714	127
02 Dairy products and eggs	1	7	700	72		27	9	35
03 Fish and preparations	1 069	472	44	188	40	90	9	10
04 Cereal and cereal products	2 505	2 523	101	3 886	154	1 147	2 242	195
05 Vegetables and fruit	6 939	9 347	135	9 601	103	1 621	1 198	74
06 Sugars, sugar preparations and honey	301	302	100	515	170	446	8	2
07 Coffee, tea, cocoa, spices, and manufactures thereof	164	2 962		2 865	97	1 267	1 925	152
08 Feeding stuff for animals (not including unmilled cereals)	431	118	27	82	69	47	34	72
09 Miscellaneous edible products and preparations	1 437	3 050	212	5 139	169	1 917	1 209	63
<b>1 Beverages and tobacco</b>	<b>21 749</b>	<b>21 109</b>	<b>97</b>	<b>23 079</b>	<b>109</b>	<b>8 147</b>	<b>7 980</b>	<b>98</b>
11 Beverages	21 049	20 975	100	22 685	108	8 035	7 980	99
12 Tobacco and tobacco manufactures	699	134	19	394	294	113	0	0
<b>2 Crude materials, inedible, except fuels</b>	<b>25 120</b>	<b>44 713</b>	<b>178</b>	<b>64 192</b>	<b>144</b>	<b>30 057</b>	<b>25 909</b>	<b>86</b>
21 Hides, skins and fur skins, raw	2 042	4 101	201	4 672	114	1 884	3 154	167
22 Oil-seeds and oleaginous fruits	13	0	0	0		0	0	
23 Crude rubber	0	0		14		0	0	
24 Cork and wood	12 862	15 790	123	18 120	115	6 720	5 546	83
25 Pulp and waste paper	481	710	148	1 237	174	574	538	94
26 Textile fibres and their wastes	31	24	77	104	433	31	29	96
27 Crude fertilizers, and crude minerals	1 987	2 993	151	1 036	35	516	388	75
28 Metalliferous ores and metal scrap	7 468	20 911	280	38 769	185	20 210	16 207	80
29 Crude animal and vegetable materials, n.e.s.	236	183	78	241	132	123	48	39
<b>3 Mineral fuels, lubricants and related materials</b>	<b>8 375</b>	<b>33 286</b>	<b>397</b>	<b>62 957</b>	<b>189</b>	<b>36 805</b>	<b>21 430</b>	<b>58</b>
32 Coal, coke and briquettes	2 982	3 431	115	2 560	75	1 001	902	90
33 Petroleum, petroleum products and related materials	5 393	12 822	238	11 303	88	4 698	3 749	80
34 Gas, natural and manufactured	0	0		0		0	0	
35 Electric current	0	17 033		49 094	288	31 106	16 779	54
<b>4 Animal oils and fats</b>	<b>291</b>	<b>1 288</b>	<b>443</b>	<b>1 434</b>	<b>111</b>	<b>233</b>	<b>1 227</b>	<b>526</b>
41 Animal oils and fats	97	415	428	426	103	135	194	143
42 Fixed vegetable fats and oils	82	828		940	114	80	920	
43 Animal or vegetable fats and oils, processed	112	44	39	68	154	18	113	622
<b>5 Chemicals</b>	<b>11 824</b>	<b>12 916</b>	<b>109</b>	<b>12 083</b>	<b>94</b>	<b>6 252</b>	<b>6 043</b>	<b>97</b>
51 Organic chemicals	76	133	175	60	45	4	16	410
52 Inorganic chemicals	92	60	65	56	94	3	4	147
53 Dyeing, tanning and colouring materials	196	837	427	1 354	162	983	54	5
54 Medicinal and pharmaceutical products	9 094	8 906	98	7 832	88	3 893	4 726	121
55 Essential oils, perfume materials, toilet prep.	1 332	1 424	107	1 005	71	447	410	92
56 Fertilizers (other than those of group 272)	0	22		30	136	30	2	6
57 Plastics in primary forms	26	219	842	195	89	76	137	181
58 Plastics in non-primary forms	221	547	248	402	74	233	278	119
59 Chemicals and products n.e.s.	788	768	97	1 148	150	583	416	71

/countinue/

<b>BREAKDOWN BY SITC SECTIONS</b>	<b>2009</b>	<b>2010</b>	<b>Index 2010 2009</b>	<b>2011</b>	<b>Index 2011 2010</b>	<b>Jan-June 2011</b>	<b>Jan-June 2012</b>	<b>Index Jan-Jun12 Jan-Jun11</b>
<b>6 Manufactured goods classified chiefly by material</b>	<b>153 663</b>	<b>157 109</b>	<b>102</b>	<b>219 443</b>	<b>140</b>	<b>105 862</b>	<b>92 282</b>	<b>87</b>
61 Leather, leather manufactures and dressed fur skins	13	168		282	168	264	133	51
62 Rubber manufactures	124	266	215	242	91	138	81	59
63 Cork and wood manufactures	671	746	111	932	125	465	325	70
64 Paper, paperboard and articles of paper pulp	903	898	99	1 592	177	406	481	118
65 Textile yarn, fabrics, made-up articles and related products	104	196	188	173	88	84	128	151
66 Non-metallic mineral manufactures	746	1 000	134	1 595	159	791	765	97
67 Iron and steel	32 810	19 400	59	27 388	141	4 522	12 330	273
68 Non-ferrous metals	113 166	130 792	116	182 402	139	97 631	75 840	78
69 Manufactures of metals	5 125	3 643	71	4 837	133	1 559	2 198	141
<b>7 Machinery and transport equipment</b>	<b>27 745</b>	<b>27 047</b>	<b>97</b>	<b>23 899</b>	<b>88</b>	<b>11 022</b>	<b>12 091</b>	<b>110</b>
71 Power-generating machinery and equipment	380	384	101	440	115	181	139	77
72 Machinery specialized for particular industries	3 521	3 762	107	3 361	89	1 165	1 109	95
73 Metalworking machinery	7 129	63	1	297	471	61	26	43
74 General industrial machinery and equipment	6 181	6 147	99	9 205	150	4 133	6 103	148
75 Office machines and data-processing machines	450	395	88	536	136	234	195	83
76 Telecommunications and sound-recording and reproducing apparatus and equipment	1 128	570	51	510	90	318	670	211
77 Electrical machinery, apparatus and appliances	3 642	5 582	153	3 878	69	1 656	1 051	63
78 Road vehicles	2 647	3 650	138	3 693	101	1 983	2 051	103
79 Other transport equipment	2 666	6 494	244	1 978	30	1 290	747	58
<b>8 Miscellaneous manufactured articles</b>	<b>9 511</b>	<b>8 969</b>	<b>94</b>	<b>16 910</b>	<b>189</b>	<b>3 583</b>	<b>3 865</b>	<b>108</b>
81 Prefabricated buildings; sanitary equipment	462	573	124	198	35	75	70	94
82 Furniture, and parts thereof	668	565	85	652	115	206	303	147
83 Travel goods, handbags and similar containers	69	41	59	68	167	51	15	29
84 Articles of apparel and clothing accessories	1 274	1 176	92	760	65	426	614	144
85 Footwear	477	356	75	446	125	246	300	122
87 Professional, scientific and controlling instruments	204	322	158	287	89	128	84	66
88 Photographic apparatus, equipment and supplies and optical goods	30	84	280	168	200	83	40	49
89 Miscellaneous manufactured articles	6 327	5 852	92	14 330	245	2 367	2 439	103
<b>9 Commodities and transactions not classified elsewhere in the SITC</b>	<b>324</b>	<b>0</b>	<b>0</b>	<b>2 800</b>		<b>2 800</b>	<b>2 156</b>	<b>77</b>

**Table 12. Import of Montenegro by SITC sections**

BREAKDOWN BY SITC SECTIONS	in EUR 1 000							
	2009	2010	Index 2010 2009	2011	Index 2011 2010	Jan-June 2011	Jan-June 2012	Index Jan-Jun12 Jan-Jun11
<b>0-9 TOTAL</b>	<b>1 654 170</b>	<b>1 657 329</b>	<b>100</b>	<b>1 823 337</b>	<b>110</b>	<b>843 328</b>	<b>864 950</b>	<b>103</b>
<b>0 Food and live animals</b>	<b>312 835</b>	<b>324 209</b>	<b>104</b>	<b>351 857</b>	<b>109</b>	<b>159 869</b>	<b>160 329</b>	<b>100</b>
00 Live animals	16 174	21 784	135	25 509	117	11 788	12 101	103
01 Meat and meat preparations	76 611	76 026	99	74 023	97	32 295	37 338	116
02 Dairy products and eggs	38 414	40 768	106	46 664	114	21 962	22 517	103
03 Fish and preparations	9 116	9 606	105	10 585	110	4 315	3 980	92
04 Cereal and cereal products	50 465	46 581	92	57 092	123	27 478	24 886	91
05 Vegetables and fruit	37 741	33 799	90	38 681	114	18 150	16 754	92
06 Sugars, sugar preparations and honey	9 667	9 948	103	12 826	129	5 284	4 898	93
07 Coffee, tea, cocoa, spices and manufactures thereof	39 111	47 669	122	44 524	93	19 541	18 172	93
08 Feeding stuff for animals (not including unmilled cereals)	11 943	13 670	114	16 367	120	7 354	7 631	104
09 Miscellaneous edible products and preparations	23 594	24 357	103	25 586	105	11 701	12 050	103
<b>1 Beverages and tobacco</b>	<b>66 878</b>	<b>63 930</b>	<b>96</b>	<b>65 850</b>	<b>103</b>	<b>26 355</b>	<b>26 078</b>	<b>99</b>
11 Beverages	46 411	46 352	100	50 939	110	20 348	21 500	106
12 Tobacco and tobacco manufactures	20 467	17 578	86	14 910	85	6 007	4 578	76
<b>2 Crude materials, inedible, except fuels</b>	<b>37 842</b>	<b>70 243</b>	<b>186</b>	<b>84 420</b>	<b>120</b>	<b>40 834</b>	<b>34 450</b>	<b>84</b>
21 Hides, skins and fur skins, raw	37	86	232	0	0	0	1 040	
22 Oil-seeds and oleaginous fruits	519	810	156	603	74	416	171	41
23 Crude rubber	293	61	21	162	266	51	44	85
24 Cork and wood	5 780	7 337	127	6 497	89	3 544	2 708	76
25 Pulp and waste paper	7	6	86	8	127	7	5	75
26 Textile fibres and their wastes	626	430	69	508	118	267	341	128
27 Crude fertilizers, and crude minerals	3 917	3 398	87	3 320	98	1 087	1 116	103
28 Metalliferous ores and metal scrap	21 868	53 470	245	67 708	127	32 511	26 138	80
29 Crude animal and vegetable materials, n.e.s.	4 794	4 645	97	5 614	121	2 951	2 887	98
<b>3 Mineral fuels, lubricants and related materials</b>	<b>208 057</b>	<b>209 660</b>	<b>101</b>	<b>330 590</b>	<b>158</b>	<b>138 795</b>	<b>170 172</b>	<b>123</b>
32 Coal, coke and briquettes	526	333	63	419	126	254	224	88
33 Petroleum, petroleum products and related materials	130 964	166 165	127	207 229	125	90 678	100 845	111
34 Gas, natural and manufactured	8 418	12 890	153	13 987	109	5 712	6 441	113
35 Electric current	68 148	30 272	44	108 954	360	42 151	62 663	149
<b>4 Animal oils and fats</b>	<b>12 454</b>	<b>12 568</b>	<b>101</b>	<b>14 844</b>	<b>118</b>	<b>6 684</b>	<b>6 829</b>	<b>102</b>
41 Animal oils and fats	802	602	75	564	94	288	332	115
42 Fixed vegetable fats and oils	11 164	11 532	103	13 814	120	6 177	6 350	103
43 Animal or vegetable fats and oils, processed	488	434	89	465	107	219	147	67
<b>5 Chemicals</b>	<b>167 918</b>	<b>162 956</b>	<b>97</b>	<b>169 589</b>	<b>104</b>	<b>82 687</b>	<b>80 526</b>	<b>97</b>
51 Organic chemicals	2 511	2 030	81	2 167	107	831	1 245	150
52 Inorganic chemicals	7 771	4 917	63	4 935	100	2 190	2 233	102
53 Dyeing, tanning and colouring materials	21 153	19 629	93	20 577	105	10 452	9 600	92
54 Medicinal and pharmaceutical products	54 425	53 590	98	54 996	103	27 176	24 890	92
55 Essential oils, perfume materials, toilet prep.	38 510	40 169	104	43 561	108	19 982	20 040	100
56 Fertilizers (other than those of group 272)	1 775	2 131	120	2 504	118	2 077	1 979	95
57 Plastics in primary forms	2 449	2 455	100	2 585	105	1 315	1 313	100
58 Plastics in non-primary forms	23 477	21 295	91	20 704	97	9 689	10 557	109
59 Chemicals and products n.e.s.	15 846	16 740	106	17 560	105	8 974	8 668	97

/countinue/

<b>BREAKDOWN BY SITC SECTIONS</b>	<b>2009</b>	<b>2010</b>	<b>Index 2010 2009</b>	<b>2011</b>	<b>Index 2011 2010</b>	<b>Jan-June 2011</b>	<b>Jan-June 2012</b>	<b>Index Jan-Jun12 Jan-Jun11</b>
<b>6 Manufactured goods classified chiefly by material</b>	<b>274 772</b>	<b>265 841</b>	<b>97</b>	<b>264 771</b>	<b>100</b>	<b>124 431</b>	<b>122 834</b>	<b>99</b>
61 Leather, leather manufactures and dressed fur skins	317	204	64	231	113	96	117	121
62 Rubber manufactures	11 266	14 777	131	15 396	104	6 138	7 928	129
63 Cork and wood manufactures	17 519	16 948	97	17 300	102	7 968	8 655	109
64 Paper, paperboard and articles of paper pulp	26 085	27 822	107	28 833	104	13 083	13 624	104
65 Textile yarn, fabrics, made-up articles and related products	11 331	12 660	112	12 333	97	6 211	7 197	116
66 Non-metallic mineral manufactures	87 197	77 953	89	72 952	94	36 024	33 326	93
67 Iron and steel	37 017	37 330	101	41 170	110	19 756	16 741	85
68 Non-ferrous metals	12 930	13 471	104	13 190	98	5 936	6 042	102
69 Manufactures of metals	71 110	64 676	91	63 366	98	29 218	29 204	100
<b>7 Machinery and transport equipment</b>	<b>357 735</b>	<b>340 607</b>	<b>95</b>	<b>315 905</b>	<b>93</b>	<b>153 595</b>	<b>156 980</b>	<b>102</b>
71 Power-generating machinery and equipment	12 968	7 842	60	5 486	70	2 741	5 069	185
72 Machinery specialized for particular industries	19 604	28 594	146	28 699	100	10 986	10 645	97
73 Metalworking machinery	2 403	2 152	90	3 293	153	2 167	897	41
74 General industrial machinery and equipment	58 484	56 990	97	50 092	88	26 098	27 903	107
75 Office machines and data-processing machines	22 011	24 729	112	21 821	88	9 876	10 103	102
76 Telecommunications and sound-recording and reproducing apparatus and equipment	38 125	35 489	93	38 118	107	19 990	16 244	81
77 Electrical machinery, apparatus and appliances	87 715	81 175	93	66 827	82	29 722	31 131	105
78 Road vehicles	88 583	94 456	107	95 478	101	47 249	52 162	110
79 Other transport equipment	27 841	9 179	33	6 089	66	4 766	2 825	59
<b>8 Miscellaneous manufactured articles</b>	<b>215 677</b>	<b>207 315</b>	<b>96</b>	<b>224 777</b>	<b>108</b>	<b>109 362</b>	<b>106 357</b>	<b>97</b>
81 Prefabricated buildings; sanitary equipment	12 204	11 831	97	10 939	92	5 312	5 691	107
82 Furniture, and parts thereof	44 209	41 379	94	42 448	103	21 699	20 227	93
83 Travel goods, handbags and similar containers	4 879	4 649	95	5 333	115	2 629	2 683	102
84 Articles of apparel and clothing accessories	43 219	42 745	99	46 507	109	21 028	21 575	103
85 Footwear	25 147	23 309	93	27 256	117	12 847	14 155	110
87 Professional, scientific and controlling instruments	16 943	13 656	81	16 430	120	7 451	10 413	140
88 Photographic apparatus, equipment and supplies and optical goods	3 910	3 699	95	4 815	130	2 371	2 358	99
89 Miscellaneous manufactured articles	65 166	66 046	101	71 049	108	36 024	29 256	81
<b>9 Commodities and transactions not classified elsewhere in the SITC</b>	<b>2</b>	<b>0</b>	<b>0</b>	<b>734</b>		<b>717</b>	<b>396</b>	<b>55</b>

## METHODOLOGICAL EXPLANATIONS

External trade statistics represents an important source of primary importance for a number of institutions creating economy policy, as well as for decision making at the state and certain entities level. It serves as the basic source of information for estimation of balance of payments and national accounts of country, for preparation multilateral and bilateral negotiations, enterprises to explore market and to define their position in it.

Data collection on external trade is based on recommendations UN and EU statistics contained in the following publications:

- International merchandise Trade Statistics, Concept and Definitions, UN
- Statistics on the Trade of Goods, User Guide, EUROSTAT

It is harmonised with regulations of COMMUNITY LEGISLATION applicable to the STATISTICS RELATING TO THE TRADE OF GOODS, related to EXTRASTAT

- Council Regulation 1172/95
- Commission Regulation (EC) No. 1917/2000
- Regulation (EC) No. 471/2009 of the European Parliament and Council
- Commission Regulation (EC) No. 113/2010

### **Data source**

Data source for external trade of Montenegro is customs declarations on export and import of goods. Customs declaration is a document applied in customs procedure. It contains data important for the very customs procedure, but also for needs of statistics and other users. MONSTAT takes over the data in electronic form from Customs Administration of Montenegro with monthly periodicity, and further processes and publishes the results.

Since 2002 under customs procedure when using tariffs of products, Combined Nomenclature harmonised with EU Combined Nomenclature is used. It is published in the Official Gazette of Montenegro for the current year.

### **External trade coverage**

**Export** covers the goods leaving the statistical territory of Montenegro in accordance with the following customs procedures:

- a) Export
- b) Outward processing
- c) Re-export that was in the procedure of inward processing and manufacture of goods under customs control

**Import** covers all goods entering the statistical territory of Montenegro in accordance with the following customs procedures:

- a) Import for free trade
- b) Inward processing
- c) Manufacture of goods under customs control

Classification of export-import is performed in accordance with Nomenclature for External Trade Statistics which is based on Standard International Trade Classification (SITC), rev. 4. The code of every products classified by SITC has the following structure: first number means sector, second one – section, third – group, fourth – subgroup, and fifth number – position, i.e. product.

Published by Statistical Office of Montenegro (MONSTAT)  
81000 Podgorica, IV Proleterske 2, Phone: (+382) 20 230-811, Fax:(+382) 20 230-814

The release prepared by:

**Maja VUCINIC and Ivan LAKOVIC**

Phone: +382 20 230 805

e-mail: [contact@monstat.org](mailto:contact@monstat.org)