

RELEASE 64/2024

Release date: 16 May 2024

Preliminary data

## Construction activity

### The first quarter 2024

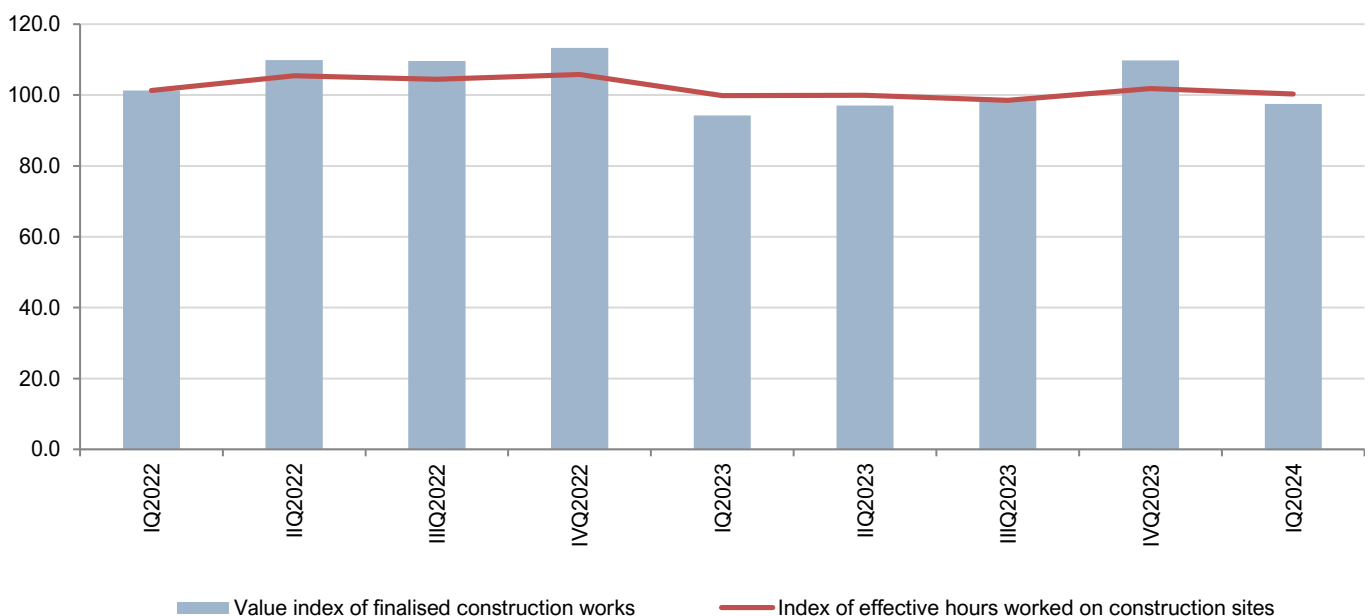
The value of finalised construction works in the first quarter of 2024 is higher for 3.4% compared with the first quarter of 2023, while it is 11.2% lower compared with the fourth quarter of 2023.

Effective hours worked on construction site in the first quarter of 2024 are higher for 0.5% compared with the first quarter of 2023, while it is 1.5% lower compared with the fourth quarter of 2023.

**Table 1.** Indices of construction activities, I quarter 2024

Indicators	<u>IQ 2024</u> Ø 2023	<u>IQ 2024</u> IQ 2023	<u>IQ 2024</u> IVQ 2023
Value of finalised construction works	97.5	103.4	88.8
Effective hours worked on construction sites	100.3	100.5	98.5

**Graph 1.** Indices of construction work values and effective hours worked, 2023=100



## METHODOLOGICAL NOTES

The presented data are collected through survey on construction activity (GRADJ-31). The survey is realised on a sample basis. The frame for a sample is enterprises with 5 and more employees who are in a Statistical Business register according to the Classification of activities classified in sector F – Construction, as well as companies (KAU) whose business units engaged in construction works. Survey covers all large and medium enterprises (class 2 and 3), while small enterprises (class 1) is selected by random simple sample.

Value of finalised construction works are including: material costs, labour costs, demolition and preparation of field, installation costs, general costs and profit. The value does not include expenses of buying the land, engineering, monitoring and VAT. The data on value of finalised construction work refer to works performed in the reporting period on finished and unfinished constructions. The value of finalised construction works is expressed in current prices.

Effective hours worked presents hours actually worked by workers engaged at the construction sites during regular working hours, as well as overtime work.

Data are published according to the [Statistical Release Calendar](#).

The last published data are considered preliminary, and becomes final within the defined deadline, as foreseen by the Statistical Release Calendar.

When using the data, state:

"Data source: Statistical Office - MONSTAT"

*More data, as well as detailed methodological notes can be found in the section: [Construction activity](#)*