

RELEASE 60/2026

Release date:
14 May 2026

Preliminary data

Construction activity

The first quarter 2026

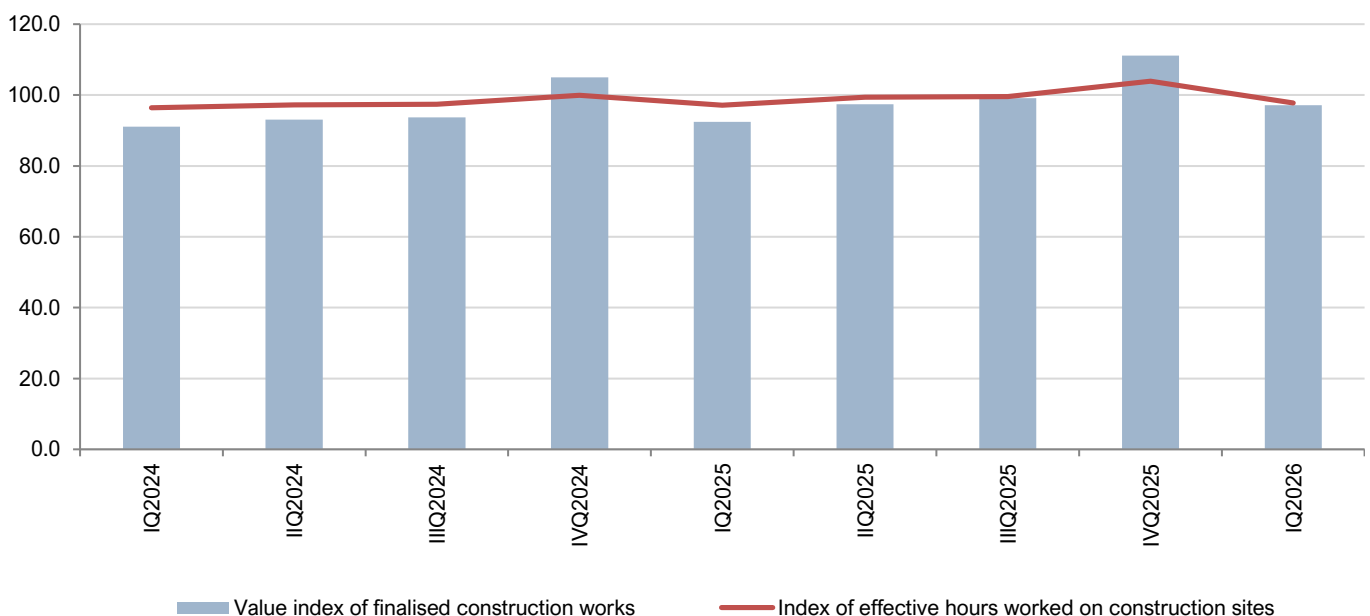
The value of finalised construction works in the first quarter of 2026 is higher for 5.1% compared with the first quarter of 2025, while it is 12.6% lower compared with the fourth quarter of 2025.

Effective hours worked on the construction site in the first quarter of 2026 are higher for 0.7% compared with the first quarter of 2025, while it is 5.9% lower compared with the fourth quarter of 2025.

Table 1. Indices of construction activities, I quarter 2026

Indicators	$\frac{IQ\ 2026}{\emptyset\ 2025}$	$\frac{IQ\ 2026}{IQ\ 2025}$	$\frac{IQ\ 2026}{IVQ\ 2025}$
Value of finalised construction works	97.1	105.1	87.4
Effective hours worked on construction sites	97.8	100.7	94.1

Graph 1. Indices of construction work values and effective hours worked, 2025=100



METHODOLOGICAL NOTES

The presented data are collected through a survey on construction activity (GRADJ-31). The survey is conducted on a sample basis. The frame for a sample is enterprises with 5 and more employees who are in the Statistical Business register according to the Classification of activities classified in sector F – Construction, as well as companies (KAU) whose business units engaged in construction works. Survey covers all large and medium enterprises (class 2 and 3), while small enterprises (class 1) are selected by a random simple sample.

The value of finalised construction works includes: material costs, labour costs, demolition and preparation of the field, installation costs, general costs, and profit. The value does not include expenses of buying the land, engineering, monitoring, and VAT. The data on the value of finalised construction work refer to works performed in the reporting period on finished and unfinished constructions. The value of finalised construction works is expressed in current prices.

Effective hours worked present hours actually worked by workers engaged at the construction sites during regular working hours, as well as overtime work.

Data are published according to the [Statistical Release Calendar](#).

The last published data are considered preliminary and become final within the defined deadline, as foreseen by the Statistical Release Calendar.

When using the data, state:

"Data source: Statistical Office - MONSTAT"

More data, as well as detailed methodological notes can be found in the section: [Construction activity](#)