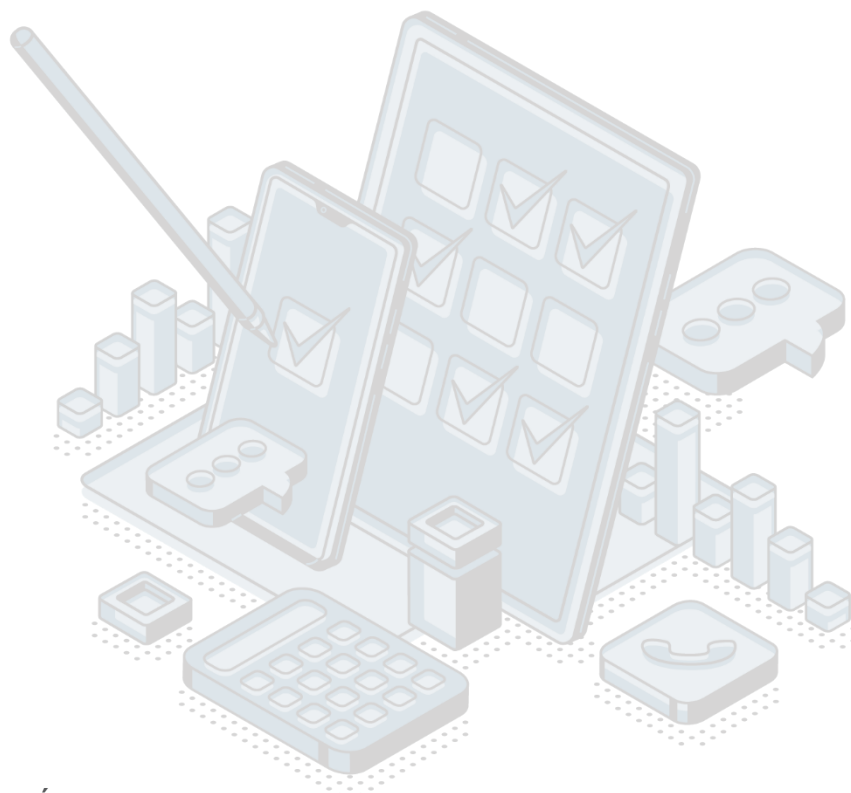


## QUALITY REPORT

# Arrivals and overnights of tourists in individual (private) accomodation

## 2024



**Responsible persons:** Željko ŽIVKOVIĆ

**Department:** Business Statistics, Foreign Affiliates Statistics, and Structural Business Statistics

**Table of contents:**

<b>1. Introduction – Basic information on survey .....</b>	<b>3</b>
1.1 Purpose, goal, and subject of survey .....	3
1.2 Legal basis.....	3
1.3 Statistical units .....	3
1.4 Coverage and scope of survey .....	4
1.4.1 Sectors .....	4
1.4.2 Statistical population.....	4
1.5 Reference geographical area.....	4
1.6 Concepts and definitions.....	4
1.7 Classifications.....	4
1.8 Frequency of data collection .....	4
1.9 Frequency of data collection .....	<b>Error! Bookmark not defined.</b>
1.10 Methodology .....	5
1.11 Base period.....	5
1.12 Unit of measure.....	5
1.13 Data source.....	5
1.14 Method of data collection .....	5
<b>2. Relevance – data users.....</b>	<b>5</b>
2.1 User needs .....	5
2.2 User satisfaction .....	6
<b>3. Accuracy and reliability .....</b>	<b>6</b>
3.1 Accuracy – overall.....	6
3.2 Sampling error .....	6
Sampling error indicators .....	6
3.3 Non-sampling error .....	6
3.3.1 Coverage error .....	6
Indikator greške obuhvata.....	<b>Error! Bookmark not defined.</b>
3.3.2 Measurement error .....	6
3.3.3 Non-response error .....	6
Unit nonresponse rate.....	6
Item nonresponse rate .....	6
3.3.4 Data processing error .....	6
Imputation rate .....	7
3.4 Seasonal adjustment .....	7
3.5 Data revision .....	7
3.5.1 Data revision policy .....	7
3.5.2 Data revision practice .....	7
3.5.3 Data revision - average size .....	7
<b>4. Timeliness and punctuality .....</b>	<b>7</b>
4.1 Timeliness.....	7
Time lag of preliminary results .....	7
Time lag of final data.....	7
4.2 Punctuality .....	7
<b>5. Availability and clarity .....</b>	<b>7</b>
5.1 Statistical Release Calendar.....	8
5.2 Access to Statistical Release Calendar .....	8
5.3 Releases.....	8
5.4 Publications .....	8
5.5 Online database.....	8
5.6 Access to microdata.....	8
5.7 Metadata occupancy.....	8
<b>6. Comparability .....</b>	<b>8</b>
6.1 Spatial comparability.....	8
6.2 Time comparability.....	9
Time comparability indicator.....	9

## **1. Introduction – Basic information on survey**

### **1.1 Purpose, goal, and subject of survey**

The aim of the statistical survey on tourist arrivals and overnight stays in individual accommodation establishments is to provide basic information on the scope of tourist traffic (arrivals and overnight stays) of domestic and foreign tourists. Results of survey are used to create a tourism policy and strategy for the development of tourism, as well as the fulfillment of requests for information from domestic and foreign users.

### **1.2 Legal basis**

The Law on Official Statistics and Official Statistical System ([Official Gazette of Montenegro No 18/12 and 047/19) defines provisions for collection, processing, and dissemination of data. The Law provides to the Statistical Office clear and wide legal powers to collect and access the data necessary for the implementation of Programme and Annual Plan. The Law gives a priority to the use of administrative data and right of access to individual data that are a result of survey of other official statistical producers. As an annex to legal provisions, Statistical Office has signed several memoranda on cooperation with administrative data providers.

EU regulations defining this area of statistics

Framework regulation:

Regulation (EU) No 692/2011 of the European Parliament and of the Council of 6 July 2011 concerning European statistics on tourism and repealing Council Directive 95/57/EC.

Implementing regulations:

Commission Implementing Regulation (EU) No 1051/2011 of 20 October 2011 implementing Regulation (EU) No 692/2011 of the European Parliament and of the Council concerning European statistics on tourism, as regards the structure of the quality reports and the transmission of the data;

Commission Delegated Regulation (EU) 2019/1681 of 1 August 2019 amending Regulation (EU) No 692/2011 of the European Parliament and of the Council concerning European statistics on tourism, as regards the transmission deadlines and adaptation of Annexes I and II;

Commission Delegated Regulation (EU) 2020/1569 of 23 July 2020 amending Annex I to Regulation (EU) No 692/2011 of the European Parliament and of the Council, on the classification of countries of residence of guests staying at tourist accommodation establishments in the context of the withdrawal of the United Kingdom from the Union;

Commission Implementing Regulation (EU) 2021/1179 of 16 July 2021 amending Implementing Regulation (EU) No 1051/2011 as regards the aggregate tables and micro-data files for the transmission of the data.

### **1.3 Statistical units**

Accommodation facilities providing accommodation services in households (individual tourist accommodation, so-called "private accommodation").

## **1.4 Coverage and scope of survey**

### **1.4.1 Sectors**

The survey covers accommodation facilities providing accommodation services in households and rural households (individual tourist accommodation, or so-called "private accommodation"), which according to the Tourism and Catering Act ("Official Gazette of Montenegro", No. 013/18, 25/2019, 67/2019, 76/2020) units with a maximum of 20 beds.

### **1.4.2 Statistical population**

Tourists in catering facilities for individual / private accommodation.

## **1.5 Reference geographical area**

Montenegro, municipalities.

## **1.6 Concepts and definitions**

Tourism means the activity of visitors taking a trip to a main destination outside their usual environment for less than a year, for leisure, business or other personal purpose other than to be employed by a resident entity in the place visited. Tourist is every person who, outside his/her place of permanent residence, spends at least one night in a hotel or some other accommodation establishment for reasons of rest, recreation, health, study, sport, religion, family, business, public tasks or meeting. Children are considered tourists and should be covered by this report, regardless of their age. Tourists are not persons who stays longer than 12 consecutive months in place visited, persons engaged in some activity funded from the place of the visit, persons who regularly, daily and weekly travel to the place for work or study, migrants, border workers, diplomatic and consular representatives, refugees, displaced persons, persons in transit who do not formally enter the country, permanent residents who travel to another place with the intention to reside there permanently, people who are temporarily working in Montenegro and receive a salary for their work. Residence is a place where a person came with the intention of permanent stay. The tourist is registered in every place or establishment where he/she stays. Consequently, in case of change of place or establishment, he/she is registered again, which results in data ambiguity. This is why statistics registers the number of tourist arrivals and not the number of tourists. Domestic tourist is a person with permanent residence in Montenegro, who spends at least one night in a hotel or some other accommodation establishment in any place in the Montenegro, but outside his/her place of residence. Foreign tourist is every person with permanent residence outside of Montenegro who temporarily resides in the Montenegro and who spends at least one night in a hotel or some other accommodation establishment. Accommodation capacity is expressed by the number of establishments, rooms and other accommodation units, and beds available to tourists. Beds are permanent and auxiliary. Permanent beds are those that are regularly readymade for renting to guests. Auxiliary beds are beds which are intended for comfort of guests (couches, sofas, etc.) and spare beds with which accommodation capacity is increased during the high season.

## **1.7 Classifications**

Rules on types, minimum technical conditions, types of facilities based on Law on Tourism an Catering ("Official Gazette of Montenegro", number 013/18, 25/2019, 67/2019, 76/2020). Classification of activities Nace Rev.2".

## **1.8 Frequency of data collection**

Monthly.

## **1.9 Frequency of data dissemination**

Annual.

## 1.10 Methodology

Methodological explanations on the link:

<http://monstat.org/eng/page.php?id=1458&pageid=1458>

## 1.11 Base period

Period of the previous year.

## 1.12 Unit of measure

The number of tourist arrivals and nights is expressed in absolute values. Changes in relation to the previous period - percent (%).

## 1.13 Data source

Ministry of the Interior (data on traffic of persons and vehicles at border crossings; data from the register database Residences - RB90), Local Tourism Organizations, National Tourism Organization, Ministry of Sustainability development and tourism (data on accommodation facilities from the Central Tourist Registry), competent tax authorities local self-government, sector statistics from the official statistics system and other relevant economic data companies in the field of traffic, energy, etc.

## 1.14 Method of data collection

Reporting method and administrative data sources.

## 2. Relevance – data users

### 2.1 User needs

International users:

- ✚ Eurostat;
- ✚ World Bank;
- ✚ UN organizations;
- ✚ International Monetary Fund.

National users:

- ✚ Ministries and other public administration bodies;
- ✚ Local government and other local government bodies;
- ✚ Central Bank;
- ✚ Non-governmental organizations;
- ✚ Students;
- ✚ Researchers;
- ✚ Media.

## 2.2 User satisfaction

The Statistical Office has adopted the Quality Management Strategy, the Guidebook to the Implementation of the Quality Management Strategy, as well as the Plan for the Implementation of the Quality Policy. In order to measure the degree to which fulfills obligations towards users and within the new quality policy, the Statistical Office conducted User satisfaction survey. The results of the survey are available on the Statistical Office website, link: <http://monstat.org/eng/page.php?id=1502&pageid=1502>

## 3. Accuracy and reliability

### 3.1 Accuracy – overall

Survey on tourists arrivals and overnights in individual accommodation is done on a full coverage and the primary data is provided by the Local Tourism Organization and the Ministry of the Interior - Register of Residence RB90.

### 3.2 Sampling error

Not relevant.

#### *Sampling error indicators*

Not relevant.

### 3.3 Non-sampling error

Not relevant.

#### 3.3.1 Coverage error

Note relevant.

##### *Indicator of coverage error*

Not relevant.

#### 3.3.2 Measurement error

Not relevant.

#### 3.3.3 Non-response error

Note relevant.

##### *Unit nonresponse rate*

Not relevant.

##### *Item nonresponse rate*

Not relevant.

#### 3.3.4 Data processing error

Collected data passes through a number of processes before the final evaluation, namely: encryption, input, editing, imputation, tabulation, etc. The errors made in these phases are called error processing.

### *Imputation rate*

Not relevant.

### **3.4 Seasonal adjustment**

Not relevant.

### **3.5 Data revision**

#### **3.5.1 Data revision policy**

Statistical Office has adopted the revision policy and it is available on the website:

<http://monstat.org/userfiles/file/o%20nama/2017/Revision%20policy.pdf>

#### **3.5.2 Data revision practice**

Regular revisions are used in survey. Major and unplanned revisions are used only in special cases defined by the policy revision.

#### **3.5.3 Data revision - average size**

Not available.

## **4. Timeliness and punctuality**

### **4.1 Timeliness**

Preliminary data are published 2 months after the end of the reference period. The final data are published 3 months after the end of the reference period.

Timeliness of final data: T+3 months after the end of the reference period (years).

#### *Time lag of preliminary results*

The indicator of the timeliness of publication of preliminary data represents the time between the date of the last day of the reference period and the date of publication of preliminary data. Preliminary data are published 2 months after the end of the reference period.

Timeliness of preliminary data: T+2 months after the end of the reference period (years).

#### *Time lag of final data*

The indicator of timeliness of publication of final data represents the time between the date of the last day of the reference period and the date of publication of final data. The final data are published 3 months after the end of the reference period.

Timeliness of final data: T+3 months after the end of the reference period (years).

### **4.2 Punctuality**

The accuracy indicator represents the time difference between the actual data release and the planned data release. The deadlines for publication are defined in accordance with the Statistical Data Publication Calendar and those deadlines for the publication of announcements are respected.

Indicator TP3 (accuracy) is 0, i.e. there is no difference between the planned and actual data release, which means that the data was released in accordance with the Data Release Calendar.

## **5. Availability and clarity**

### **5.1 Statistical Release Calendar**

The Law on Official Statistics and Official Statistical System (Official Gazette of Montenegro No 18/12 and 47/19.) stipulates that official statistical producers prepare, update, and publish Statistical Release Calendar. It is published on the website of Statistical Office not later than 20 December for the next year, for all official statistical producers that includes date of releasing statistical data. Any change in date of releasing in the Calendar is published in advance in accordance with the Procedure on Unplanned Revisions.

### **5.2 Access to Statistical Release Calendar**

The calendar of data publication is available on the following link: [Release Calendar](#)

### **5.3 Releases**

Releases are available at the following link: <http://monstat.org/eng/page.php?id=1459&pageid=43>

### **5.4 Publications**

All publications published by the Statistical office of Montenegro are available at the link: <http://monstat.org/eng/publikacije.php?id=100>

### **5.5 Online database**

Data are available on web site:

<http://pxweb.monstat.org/PXWebEng/pxweb/en/Tourism/?rxid=0c424790-077c-4072-9564-d52f2b9bd1a2>

### **5.6 Access to microdata**

The Law on Official Statistics and Official Statistical System (Official Gazette of Montenegro No 18/12 and 47/19) regulates rules under which external users can obtain an access to individual data for needs of research. Article 58 defines types of scientific and research organizations that can obtain such data. Providing individual data without identifier is possible only upon a written request of scientific and research institutions, with purpose of performing scientific and research activities as well as international statistical organizations and statistical producers from other countries. Research entity signs the agreement with Statistical Office, and it signs the statement on respecting the confidentiality principle. Official statistical producers keeps a separate records on users and purpose of using the statistical data given to these users.

### **5.7 Metadata occupancy**

Not available.

## **6. Comparability**

### **6.1 Spatial comparability**

The survey methodology is in line with the EU regulation applied by all EU countries, and therefore these data are geographically comparable with the data of other EU countries.

## **6.2 Time comparability**

Data according to this methodology are available from 2017. Data are available on this link:

<http://monstat.org/eng/page.php?id=1459&pageid=43>

<http://monstat.org/eng/page.php?id=1458&pageid=1458>

### *Time comparability indicator*

Data according to this methodology are available from 2017.