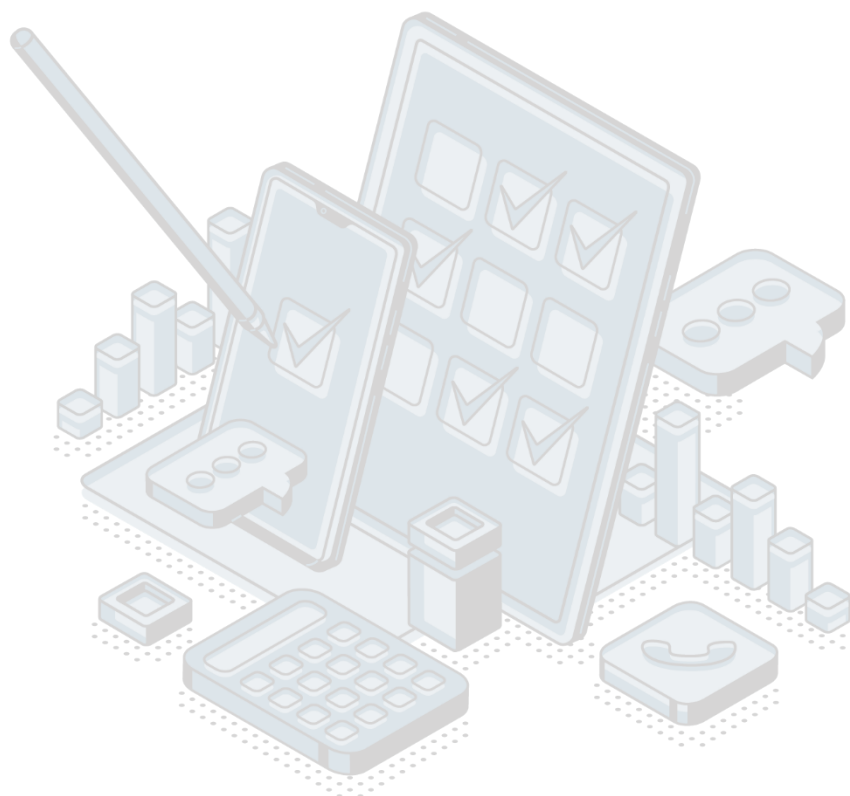


## QUALITY REPORT

# Users of Material Benefits Social and Child Protection

2024



**Responsible person:** Dragana Kalezic

**Department:** Department of education, culture and justice

**Table of contents:**

<b>1. Introduction – Basic information on survey .....</b>	<b>3</b>
1.1 Purpose, goal, and subject of survey .....	3
1.2 Legal basis.....	3
1.3 Statistical units .....	3
1.4 Coverage and scope of survey .....	3
1.4.1 Sectors .....	3
1.4.2 Statistical population.....	3
1.5 Reference geographical area.....	3
1.6 Concepts and definitions.....	3
1.7 Classifications .....	4
1.8 Frequency of data collection .....	4
1.9 Frequency of data collection .....	4
1.10 Methodology .....	4
1.11 Base period.....	4
1.12 Unit of measure.....	4
1.13 Data source.....	4
1.14 Method of data collection .....	4
<b>2. Relevance – data users.....</b>	<b>5</b>
2.1 User needs .....	5
2.2 User satisfaction .....	5
<b>3. Accuracy and reliability .....</b>	<b>5</b>
3.1 Accuracy – overall.....	5
3.2 Sampling error .....	5
Sampling error indicators .....	5
3.3 Non-sampling error .....	5
3.3.1 Coverage error .....	5
3.3.2 Measurement error .....	6
3.3.3 Non-response error .....	6
Unit nonresponse rate.....	6
Item nonresponse rate .....	6
3.3.4 Data processing error .....	6
Imputation rate .....	6
3.4 Seasonal adjustment .....	6
3.5 Data revision .....	6
3.5.1 Data revision policy .....	6
3.5.2 Data revision practice .....	6
3.5.3 Data revision - average size .....	6
<b>4. Timeliness and punctuality .....</b>	<b>6</b>
4.1 Timeliness.....	6
Time lag of preliminary results .....	6
Time lag of final data .....	6
4.2 Punctuality .....	6
<b>5. Availability and clarity .....</b>	<b>7</b>
5.1 Statistical Release Calendar .....	7
5.2 Access to Statistical Release Calendar .....	7
5.3 Releases.....	7
5.4 Publications .....	7
5.5 Online database.....	7
5.6 Access to microdata.....	7
5.7 Metadata occupancy.....	7
<b>6. Comparability .....</b>	<b>7</b>
6.1 Spatial comparability.....	7
6.2 Time comparability.....	7
6.3 Time comparability indicator.....	7

## **1. Introduction – Basic information on survey**

### **1.1 Purpose, goal, and subject of survey**

Purpose of survey in the area of social protection is collection, processing and publishing the data on users of material benefits from social and child protection (child support, material support, personal disability allowance and care and support allowance) as well as users of accommodation in institution of social and child protection, and to provide a comprehensive and coherent description of social protection in the country.

### **1.2 Legal basis**

The Law on Official Statistics and Official Statistical System (Official Gazette of Montenegro No 18/12, 47/19 and 23/25) defines provisions for collection, processing, and dissemination of data. The Law provides to the Statistical Office legal powers to collect and access the data necessary for the implementation of Programme and Annual Plan. The Law gives a priority to the use of administrative data and right of access to individual data that are a result of survey of other official statistical producers.

### **1.3 Statistical units**

Ministry of Social Welfare, Family care and Demography

### **1.4 Coverage and scope of survey**

#### **1.4.1 Sectors**

Not relevant.

#### **1.4.2 Statistical population**

Users of accommodation services in child and social welfare institutions, material security, assistance and care.

### **1.5 Reference geographical area**

Montenegro

Users of material benefits, social and child protection

## **1.6 Concepts and definitions**

The right to material support, as the basic material benefits in social protection can be obtained by family or by an individual if one is incapable to work or is capable to work, under the conditions prescribed by the Law on Social and Child Protection.

A person with severe disability are entitled to personal disability allowance.

The right to care and support allowance has a person who needs care and support due to bodily, mental, intellectual or sensory disorders or changes in health condition, in order to enable an access to fulfil his/her needs.

According to the Law on Social and Child Protection entitled to child allowance can be achieved:

- Child up to the age of 18;
- Child of the material support beneficiaries;
- Child of care and support allowance;
- Child of personal disability allowance;
- Children without parental care;
- Child whose parent, adoptive parent, foster parent, i.e. person to whom the child is given for care and education, as a social allowance beneficiary entered employment based on the agreement on active overcome of unfavourable social situation.

Beneficiary of the right to child allowance is the parent, that is the guardian or the person to whom the child is entrusted with care, education and training.

The child allowance is paid in a monthly amount to the parent or guardian or the person from whom the child was entrusted to the care, education and training.

## **1.7 Classifications**

Not relevant.

## **1.8 Frequency of data collection**

Annual frequency of data collection..

## **1.9 Dynamics of data collection**

Annual dynamics of data collection - final data.

## **1.10 Methodology**

Methodological guide for users of social protection is available at the website of Statistical Office, link: <https://www.monstat.org/eng/page.php?id=1359&pageid=79>

## **1.11 Base period**

Previous year.

## **1.12 Unit of measure**

Number of Users of social protection..

## **1.13 Data source**

Administrative data - Ministry of Social Welfare, Family care and Demography.

### 1.14 Method of data collection

Administrative method - Ministry of Social Welfare, Family care and Demography.

## 2. Relevance – data users

### 2.1 User needs

National users:

- ✚ Ministry of Social Welfare, Family care and Demography;
- ✚ Students;
- ✚ Researchers;
- ✚ Media;
- ✚ Non-government organizations.

### 2.2 User satisfaction

The Statistical Office has adopted the Quality Management Strategy, the Guide for the Implementation of the Quality Management Strategy, as well as the Implementation Plan for the Implementation of the Quality Policy. In order to measure the degree to which it fulfills its obligations towards users and as part of the new quality policy, the Directorate for Statistics conducted a survey on user satisfaction.

The results of the research are available on the website of the Statistical Office, link: <https://www.monstat.org/eng/page.php?id=1502&pageid=1>

## 3. Accuracy and reliability

### 3.1 Accuracy – overall

Reporting units are obliged to provide accurate, complete and up-to-date data that, in terms of content and form, meet the requirements of official statistics.

### 3.2 Sampling error

Not relevant.

#### *Sampling error indicators*

Not relevant.

### 3.3 Non-sampling error

Not relevant.

#### 3.3.1 Coverage error

The Statistical Office has adopted 'Revision policy' and it is available on the website: <https://www.monstat.org/eng/page.php?id=1411&pageid=3>

#### 3.3.2 Measurement error

In this statistical survey, regular revisions are applied, because the Annual Plan foresees the final publication of the data. There were no unplanned revisions.

#### 3.3.3 Non-response error

Not relevant.

## 4. Timeliness and punctuality

### 4.1 Timeliness

Data are published in accordance with the Annual Plan of Official Statistics for 2024 and the Statistical Office's Statistical Data Release Calendar for 2024. Data are published on the date specified in the Statistical Data Release Calendar.

#### *Time lag of preliminary results*

Not relevant.

#### *Time lag of final data*

The data is published as final.

### 4.2 Punctuality

The data are published on the date provided for in the Annual Plan and the Statistical Data Publication Calendar. There is no difference between the planned and actual announcement.

## 5. Availability and clarity

### 5.1 Statistical Release Calendar

The Law on Official Statistics and the System of Official Statistics ("Official Gazette of Montenegro" No 18/12, 47/19 and 23/25) prescribes that the producers of official statistics prepare, update and publish the Calendar of publication of statistical data.

It is published on the website of the Administration for Statistics no later than December 20 for the following year, for all producers of official statistics, which includes the dates of publication of statistical data.

Any change in the publication date in the Calendar is announced in advance in accordance with the Procedure on unplanned revisions.

### 5.2 Access to Statistical Release Calendar

The calendar of publication of statistical data is available at the following link: [Release Calendar](#)

### 5.3 Releases

The release on Users of social protection is published once a year and is available on the website, link: <https://www.monstat.org/eng/page.php?id=1121&pageid=79>

### 5.4 Publications

The Statistical Office publishes data on Users of social protection in the publication Statistical Yearbook.

All publications published by the Statistical Office are available at the following link: <https://www.monstat.org/eng/publikacije.php>

### 5.5 Online database

Not available.

## 5.6 Access to microdata

The Law on Official Statistics and the System of Official Statistics ("Official Gazette of Montenegro" No 18/12, 47/19 and 23/25) regulates the rules under which external users can gain access to individual data for research purposes. Article 58 defines the types of scientific and research organizations that can receive such data. The provision of individual data without identifiers is possible only at the written request of scientific and research institutions, for the purpose of carrying out scientific and research activities, as well as international statistical organizations and producers of statistics from other countries. The research subject signs the Agreement with the Statistical Office, as well as the Declaration on respect for the principle of confidentiality. Producers of official statistics keep special records on the users and on the purpose for which the statistical data are made available.

## 5.7 Metadata occupancy

Metadata completion rate represents the ratio of the number of completed metadata data in relation to the total number of acceptable metadata fields. For this research, the metadata data completion rate is 100%.

# 6. Comparability

## 6.1 Spatial comparability

Not relevant.

## 6.2 Time comparability

Time serie data for Users of social protection are available since 2016.

### *Time comparability indicator*

The CC2 indicator is 8.