

## Turnover index in other services *II quarter 2021<sup>(p)</sup>*

The turnover index in services in the II quarter of 2021 compared to the II quarter 2020 increased by 39.5% while compared to the I quarter 2021 increased by 45.2%.

The turnover index in services in sector G - Wholesale and retail trade of motor vehicles and motorcycles and wholesale in the II quarter of 2021 compared to the II quarter 2020 increased by 33.8% while compared to the I quarter 2021 increased by 40.8%.

The turnover index in services in sector H - Transport and storage in the II quarter of 2021 compared to the II quarter 2020 increased by 56.6% while compared to the I quarter 2021 increased by 47.4%.

The turnover index in services in sector I - Accommodation and food services in the II quarter of 2021 compared to the II quarter 2020 increased by 196.9% while compared to the I quarter 2021 increased by 200.9%.

The turnover index in services in sector J - Information and communication in the II quarter of 2021 compared to the II quarter 2020 increased by 14.3% while compared to the I quarter 2021 increased by 12.7%.

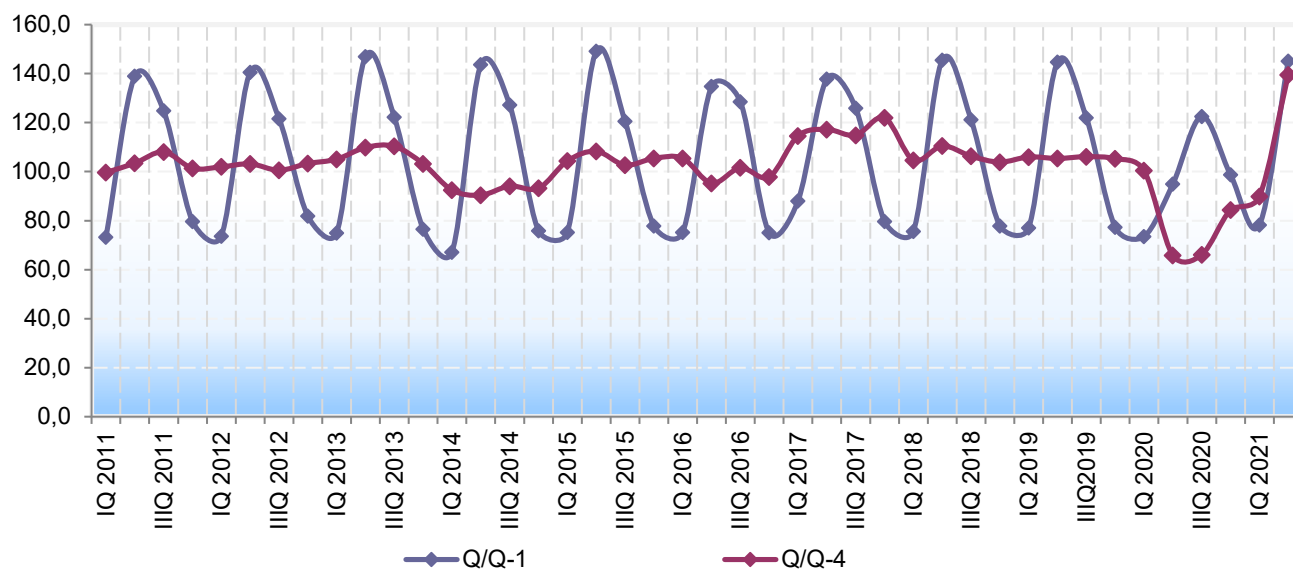
**Table 1. Turnover indices in services at current prices by group of activities<sup>1</sup>**

| NACE Rev.2                              | NAME   | $\frac{\text{IIQ 2021}}{\text{Ø2015}}$ | $\frac{\text{IIQ 2021}}{\text{IQ 2021}}$ | $\frac{\text{IIQ 2021}}{\text{IIQ 2020}}$ |
|---|--|--|--|---|
| <b>Turnover index in other services</b> |  | <b>125.3</b>                           | <b>145.2</b>                             | <b>139.5</b>                              |
| G_X_G47                                 | Wholesale and retail trade by motor vehicles and motorcycles and wholesale | 133.6                                  | 140.8                                    | 133.8                                     |
| H                                       | Transportation and storage   | 96.0                                   | 147.4                                    | 156.6                                     |
| I                                       | Accommodation and food service activities                                  | 130.1                                  | 300.9                                    | 296.9                                     |
| J                                       | Information and communication  | 100.8                                  | 112.7                                    | 114.3                                     |
| M_X_M701,721,722,750                    | Professional, scientific and technical activities                          | 140.5                                  | 147.6                                    | 125.2                                     |
| N_X_N771,772,773,774,811,813            | Administrative and support service activities                              | 82.1                                   | 133.7                                    | 155.1                                     |

<sup>1</sup> More detailed data on turnover indices in other services are available at the following link: [Data](#)

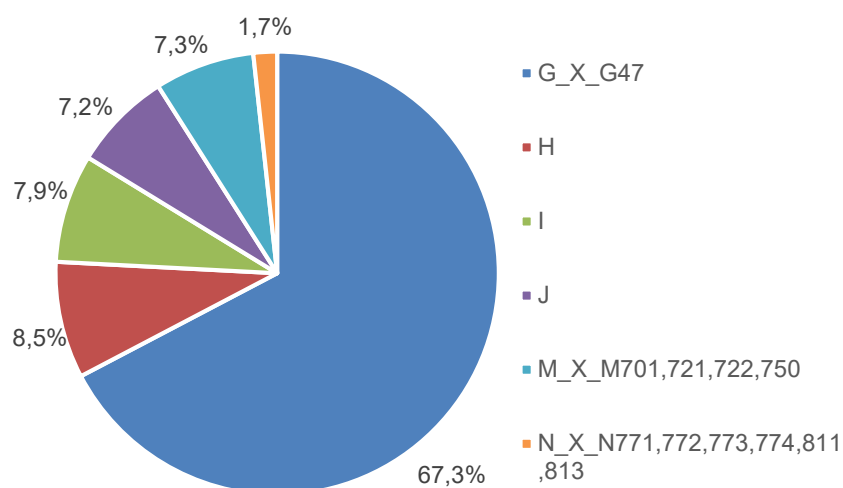
(p) - preliminary data

**Graph 1. Turnover indices in services activities**



- ❖ **Q/Q-1** – turnover indices in the current quarter compared to the previous quarter
- ❖ **Q/Q-4** – turnover indices in the current quarter compared to the same quarter of the previous year

**Graph 2. Structure of turnover by group of activities, in %  
II quarter of 2021**



The largest share in the total turnover of service activities in the II quarter of 2021 is achieved in the Wholesale and retail trade of motor vehicles and wholesale (67.3%), while the lowest in the group of activities was Administrative and support service activities (1.7%).

**Table 2. List of activities, pursuant to the EU Regulation No 1165/98**

| Area   | NACE Rev.2                       | Name of activity   |
|--|----------------------------------|--|
| G 45<br>G 46                                 | G_X_G47                          | Wholesale and retail trade by motor vehicles and motorcycles<br>Wholesale  |
| H 49<br>H 50<br>H 51<br>H 52<br>H 53         | H                                | Land transport and pipeline transport<br>Water transport<br>Air traffic<br>Storage and accompanying traffic activities<br>Post and courier activities  |
| I  | I                                | Accommodation and food services  |
| J 58<br>J 59<br>J 60<br>J 61<br>J 62<br>J 63 | J                                | Publishing activities<br>Film, video and television production, sound recording and music publishing<br>Program activities and broadcasting<br>Telecommunications<br>Computer programming, consulting and related activities<br>Information service activities |
| M 69 + 702<br>M 71<br>M 73<br>M 74           | M_X_M701,721,<br>722,750         | Legal and accounting affairs + Consulting and management jobs<br>Architectural and engineering activities and engineering testing and analysis<br>Advertising and market research<br>Other professional, scientific and technical activities                   |
| N 78<br>N 79<br>N 80<br>N 812<br>N 82        | N_X_N771,772,<br>773,774,811,813 | Employment activities<br>Activities of travel agencies, tour operators, reservation services and related activities<br>Protective and investigative activities<br>Cleaning objects<br>Office-administrative and other auxiliary business activities            |

## METHODOLOGICAL NOTES

The aim of the survey is to measure the dynamics of turnover in service activities. The dynamics of turnover is shown through index numbers.

The turnover covers a monetary value of performed, rendered services on the market in the reporting quarter. The value added tax is excluded from the turnover.

The survey is based on an administrative data source (Revenue and Customs Administration of Montenegro). Pursuant to the cooperation agreement concluded in Podgorica in September 2010 between the Statistics Directorate and the Revenue and Customs Administration, provides turnover data on the basis of VAT returns in electronic form.

The coverage is based on the EU Regulation No 1165/98 for short-term statistics (Annex D) and on its amendments. The survey is fully in line with the concepts and definitions from the mentioned Regulation. Total turnover in service activities includes turnover from the list of activities provided in Table 2, and it covers all companies in Montenegro that have reported VAT registration to the Revenue and Customs Administration.

Data are published according [Statistical Release Calendar](#).

The last published data are considered **preliminary**, and becomes final within the defined deadline, as foreseen by the Statistical Release Calendar.

### Abbreviations

EU                    European Union  
Nace Rev. 2        Classification of activities NACE Rev.2

---

**Published by the Statistical Office of Montenegro (MONSTAT)**  
**81000 Podgorica, IV Proleterske 2, Phone: (+382) 20 230-811. Fax: (+382) 20 230-814**

*The release prepared by:*

**Jelena PRELEVIC**

[contact@monstat.org](mailto:contact@monstat.org)

---