

RELEASE 61-2/2022

Date of publishing:  
10.8.2022.

## Turnover index in other services

### *First quarter 2022*

The turnover index in services in the first quarter of 2022 compared to the first quarter 2021 increased by 41.4% while compared to the fourth quarter 2021 decreased by 17.0%.

The turnover index in services in sector G - Wholesale and retail trade of motor vehicles and motorcycles and wholesale in the first quarter of 2022 compared to the first quarter 2021 increased by 36.9% while compared to the fourth quarter 2021 decreased by 13.4%.

The turnover index in services in sector H - Transport and storage in the first quarter of 2022 compared to the first quarter 2021 increased by 53.0% while compared to the fourth quarter 2021 decreased by 8.7%.

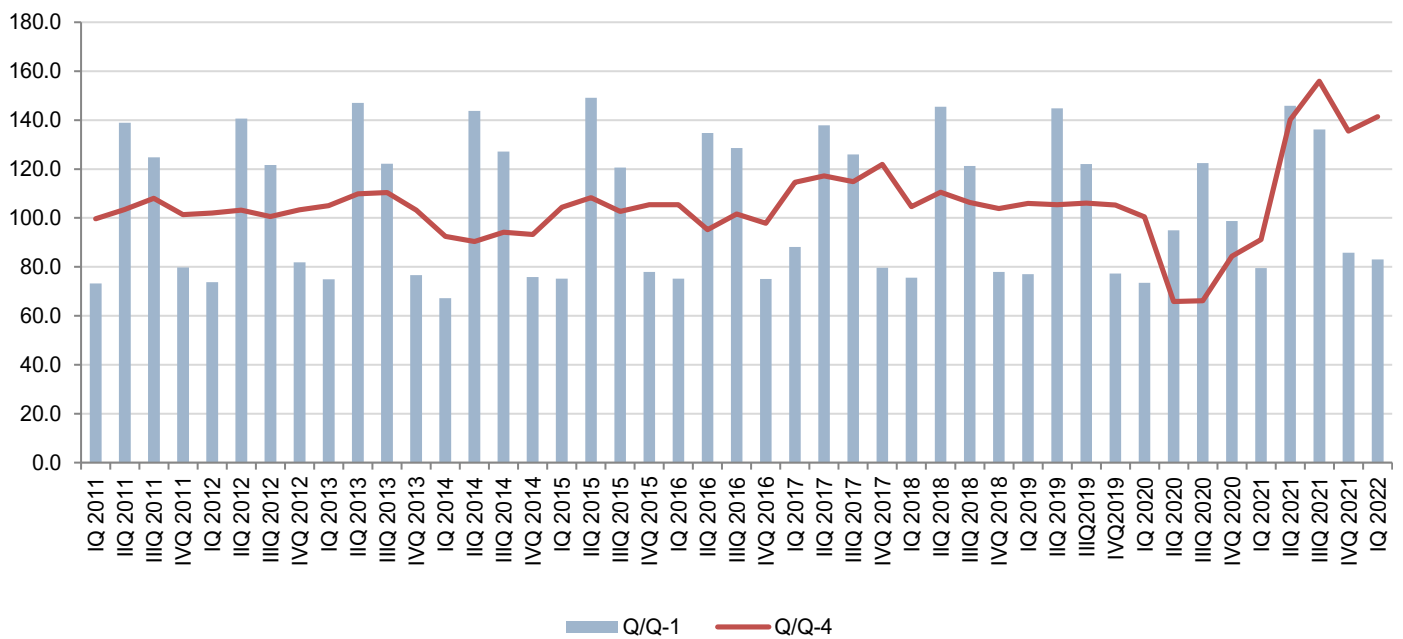
The turnover index in services in sector I - Accommodation and food services in the first quarter of 2022 compared to the first quarter 2021 increased by 143.5% while compared to the fourth quarter 2021 decreased by 18.6%.

The turnover index in services in sector J - Information and communication in the first quarter of 2022 compared to the first quarter 2021 increased by 24.9% while compared to the fourth quarter 2021 decreased by 19.6%.

**Table 1.** Turnover indices in services at current prices by group of activities

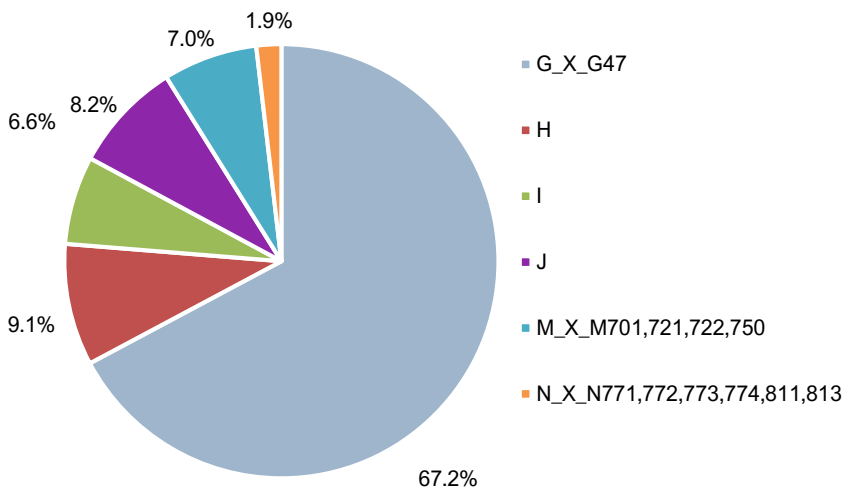
NACE Rev.2	NAME	<u>IQ 2022</u> <u>Ø2015</u>	<u>IQ 2022</u> <u>IVQ 2021</u>	<u>IQ 2022</u> <u>IQ 2021</u>
<b>Turnover index in other services</b>		<b>122.0</b>	<b>83.0</b>	<b>141.4</b>
G_X_G47	Wholesale and retail trade by motor vehicles and motorcycles and wholesale	129.9	86.6	136.9
H	Transportation and storage	99.6	91.3	153.0
I	Accommodation and food service activities	105.3	81.4	243.5
J	Information and communication	111.8	80.4	124.9
M_X_M701,721,722,750	Professional, scientific and technical activities	132.1	57.3	138.7
N_X_N771,772,773,774,811,813	Administrative and support service activities	85.9	77.1	140.0

**Graph 1. Turnover indices in services activities**



- ❖ **Q/Q-1** – turnover indices in the current quarter compared to the previous quarter
- ❖ **Q/Q-4** – turnover indices in the current quarter compared to the same quarter of the previous year

**Graph 2. Structure of turnover by group of activities, I quarter of 2022, in %**



The largest share in the total turnover of service activities in the first quarter of 2022 is achieved in the Wholesale and retail trade of motor vehicles and wholesale (67.2%), while the lowest in the group of activities was Administrative and support service activities (1.9%).

**Table 2.** List of activities, pursuant to the EU Regulation No 1165/98

<b>Area</b>	<b>NACE Rev.2</b>	<b>Name of activity</b>
G 45 G 46	G_X_G47	Wholesale and retail trade by motor vehicles and motorcycles Wholesale
H 49 H 50 H 51 H 52 H 53	H	Land transport and pipeline transport Water transport Air traffic Storage and accompanying traffic activities Post and courier activities
I	I	Accommodation and food services
J 58 J 59 J 60 J 61 J 62 J 63	J	Publishing activities Film, video and television production, sound recording and music publishing Program activities and broadcasting Telecommunications Computer programming, consulting and related activities Information service activities
M 69 + 702 M 71 M 73 M 74	M_X_M701,721, 722,750	Legal and accounting affairs + Consulting and management jobs Architectural and engineering activities and engineering testing and analysis Advertising and market research Other professional, scientific and technical activities
N 78 N 79 N 80 N 812 N 82	N_X_N771,772, 773,774,811,813	Employment activities Activities of travel agencies, tour operators, reservation services and related activities Protective and investigative activities Cleaning objects Office-administrative and other auxiliary business activities

## METHODOLOGICAL NOTES

The aim of the survey is to measure the dynamics of turnover in service activities. The dynamics of turnover is shown through index numbers.

The turnover covers a monetary value of performed, rendered services on the market in the reporting quarter. The value added tax is excluded from the turnover.

The survey is based on an administrative data source (Revenue and Customs Administration of Montenegro). Pursuant to the cooperation agreement concluded in Podgorica in September 2010 between the Statistics Directorate and the Revenue and Customs Administration, provides turnover data on the basis of VAT returns in electronic form.

The coverage is based on the EU Regulation No 1165/98 for short-term statistics (Annex D) and on its amendments. The survey is fully in line with the concepts and definitions from the mentioned Regulation. Total turnover in service activities includes turnover from the list of activities provided in Table 2, and it covers all companies in Montenegro that have reported VAT registration to the Revenue and Customs Administration.

Data are published according [Statistical Release Calendar](#).

According to the Revision policy of the Statistical Office, the final data shall be published with the date defined by the Statistical Release Calendar.

### Abbreviations

EU                      European Union  
Nace Rev. 2        Classification of activities NACE Rev.2

When using the data, state:

"Data source: Statistical Office - MONSTAT"

*More data, as well as detailed methodological notes can be found in the section: [Other services](#)*