

RELEASE 116-2/2022

Release date:  
9 November 2022

## Turnover index in other services

### *Second quarter 2022*

The turnover index in services in the second quarter of 2022, compared to the second quarter 2021, increased by 40.0%, while compared to the first quarter 2022 increased by 44.5%.

The turnover index in services in sector G - Wholesale and retail trade of motor vehicles and motorcycles and wholesale in the second quarter of 2022, compared to the second quarter 2021, increased by 37.3% while compared to the first quarter 2022 increased by 41.6%.

The turnover index in services in sector H - Transport and storage in the second quarter of 2022 compared to the second quarter 2021 increased by 53.7%, while compared to the first quarter 2022 increased by 49.7%.

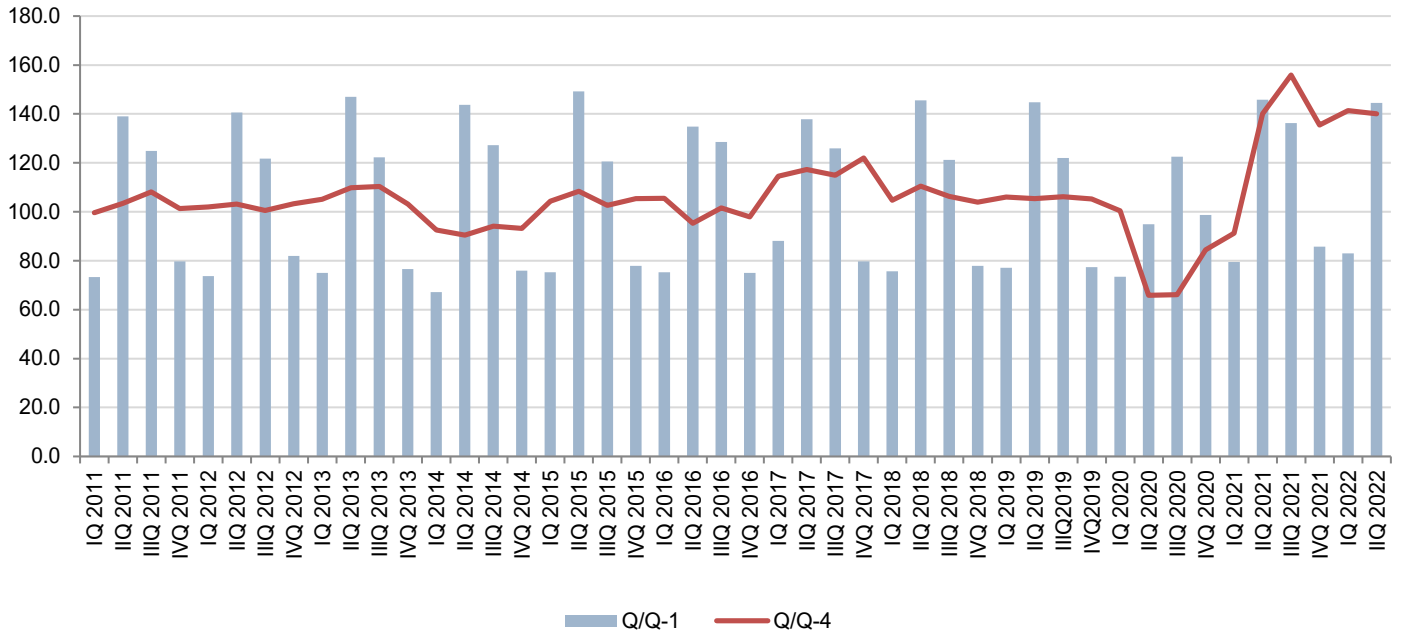
The turnover index in services in sector I - Accommodation and food services in the second quarter of 2022, compared to the second quarter 2021, increased by 78.4%, while compared to the first quarter 2022 increased by 122.8%.

The turnover index in services in sector J - Information and communication in the second quarter of 2022, compared to the second quarter 2021, increased by 22.0%, while compared to the first quarter 2022 increased by 10.6%.

**Table 1.** Turnover indices in services at current prices by group of activities

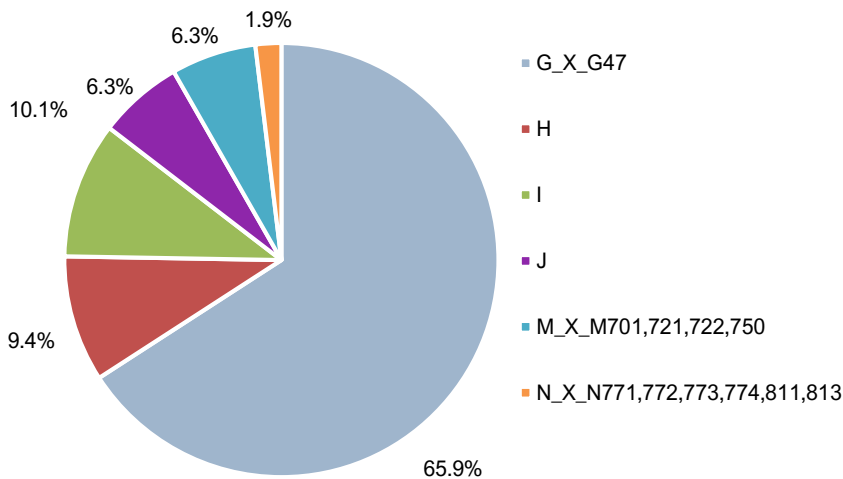
NACE Rev.2	NAME	<u>IIQ 2022</u> <u>Ø2015</u>	<u>IIQ 2022</u> <u>IQ 2022</u>	<u>IIQ 2022</u> <u>IIQ 2021</u>
<b>Turnover index in other services</b>		<b>176.2</b>	<b>144.5</b>	<b>140.0</b>
G_X_G47	Wholesale and retail trade by motor vehicles and motorcycles and wholesale	183.9	141.6	137.3
H	Transportation and storage	149.2	149.7	153.7
I	Accommodation and food service activities	234.6	222.8	178.4
J	Information and communication	123.6	110.6	122.0
M_X_M701, 721, 722, 750	Professional, scientific and technical activities	172.0	130.2	121.3
N_X_N771, 772, 773, 774, 811, 813	Administrative and support service activities	128.6	149.7	155.5

**Graph 1. Turnover indices in services activities**



- ❖ **Q/Q-1** – turnover indices in the current quarter compared to the previous quarter
- ❖ **Q/Q-4** – turnover indices in the current quarter compared to the same quarter of the previous year

**Graph 2. Structure of turnover by group of activities, II quarter of 2022, in %**



The largest share in the total turnover of service activities in the second quarter of 2022 is achieved in the Wholesale and retail trade of motor vehicles and wholesale (65.9%), while the lowest in the group of activities was Administrative and support service activities (1.9%).

Table 2. List of activities, pursuant to the EU Regulation No 1165/98

Area	NACE Rev.2	Name of activity
G 45 G 46	G_X_G47	Wholesale and retail trade by motor vehicles and motorcycles Wholesale
H 49 H 50 H 51 H 52 H 53	H	Land transport and pipeline transport Water transport Air traffic Storage and accompanying traffic activities Post and courier activities
I	I	Accommodation and food services
J 58 J 59 J 60 J 61 J 62 J 63	J	Publishing activities Film, video and television production, sound recording and music publishing Program activities and broadcasting Telecommunications Computer programming, consulting and related activities Information service activities
M 69 + 702 M 71 M 73 M 74	M_X_M701, 721, 722, 750	Legal and accounting affairs + Consulting and management jobs Architectural and engineering activities and engineering testing and analysis Advertising and market research Other professional, scientific and technical activities
N 78 N 79 N 80 N 812 N 82	N_X_N771, 772, 773, 774, 811, 813	Employment activities Activities of travel agencies, tour operators, reservation services and related activities Protective and investigative activities Cleaning objects Office-administrative and other auxiliary business activities

## METHODOLOGICAL NOTES

The aim of the survey is to measure the dynamics of turnover in service activities. The dynamics of turnover is shown through index numbers.

The turnover covers a monetary value of performed, rendered services on the market in the reporting quarter. The value added tax is excluded from the turnover.

The survey is based on an administrative data source (Revenue and Customs Administration of Montenegro). Pursuant to the cooperation agreement concluded in Podgorica in September 2010 between the Statistics Directorate and the Revenue and Customs Administration, turnover data are provided on the basis of VAT returns in electronic form.

The coverage is based on the EU Regulation No 1165/98 for short-term statistics (Annex D), and on its amendments. The survey is fully in line with the concepts and definitions from the mentioned Regulation. Total turnover in service activities includes turnover from the list of activities provided in Table 2, and it covers all companies in Montenegro that have reported VAT registration to the Revenue and Customs Administration.

The data are published in line with [Statistical Release Calendar](#).

According to the Revision Policy of the Statistical Office, the final data shall be published with the date defined by the Statistical Release Calendar.

### Abbreviations

EU                      European Union  
Nace Rev. 2        Classification of activities NACE Rev.2

When using the data, state:

"Data source: Statistical Office - MONSTAT"

*More data, as well as detailed methodological notes can be found in the section: [Other services](#)*