



Montenegro

A DECADE  
OF INDEPENDENCE  
A MILLENNIUM  
OF STATEHOOD  
MONTENEGRO  
2016



May Montenegro live forever

Government of Montenegro  
Statistical Office of Montenegro

## Release

### The estimate of number of population and demographic indicators 2015

- Number of inhabitants in Montenegro in mid-2015 was 622 159
- Working age population or the population aged 15-64 years is 67,6 % of the total population
- In Montenegro, on the basis of natural increase per 1000 inhabitants, the population increases annually by 1, 7
- The 1000 population per year made 6,2 marriages, which is the rate of marriages, and the divorce rate is 0,9
- The rate of migration in Montenegro is 7,0, which means that for each of 1000 inhabitants 7,0 persons changes their place of residence within the borders of Montenegro
- Life expectancy at birth in 2015 was 76,5 years

**Table 1. Basic demographic indicators 2015, Montenegro**

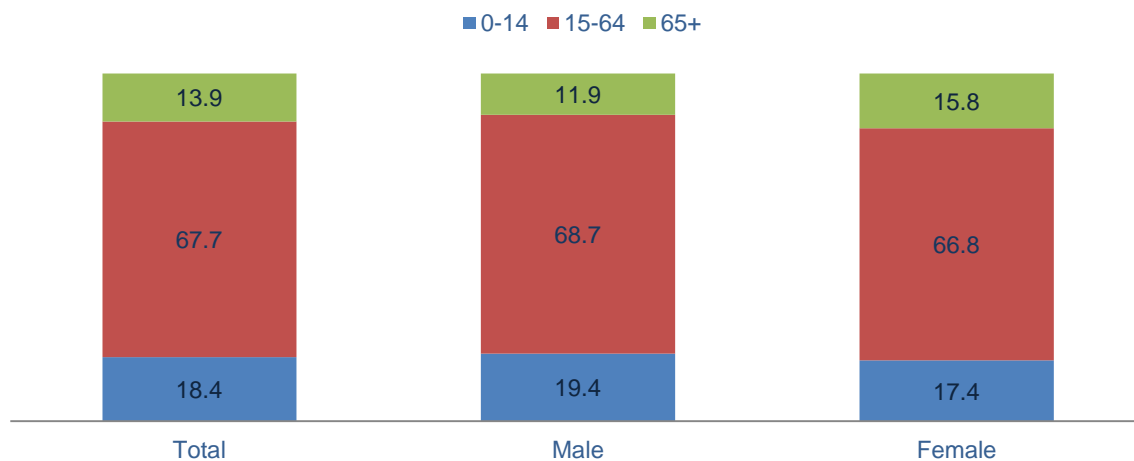
Birth rate	11,9	Infant mortality rate	2,2	Life expectancy- total	76,5
Death rate	10,2	Under five mortality rate	3,1	Life expectancy-male	74,7
Rate of natural increase	1,7	Vital index of birth per 100 deaths	116,7	Life expectancy-female	78,6
Rate of marriages	6,2	Masculinity rate of live born	109,9	Total fertility rate	1,7
Rate of divorces	0,9	Masculinity rate of dead	102,8	Rate of migrations	7,0

## THE ESTIMATE OF NUMBER OF POPULATION

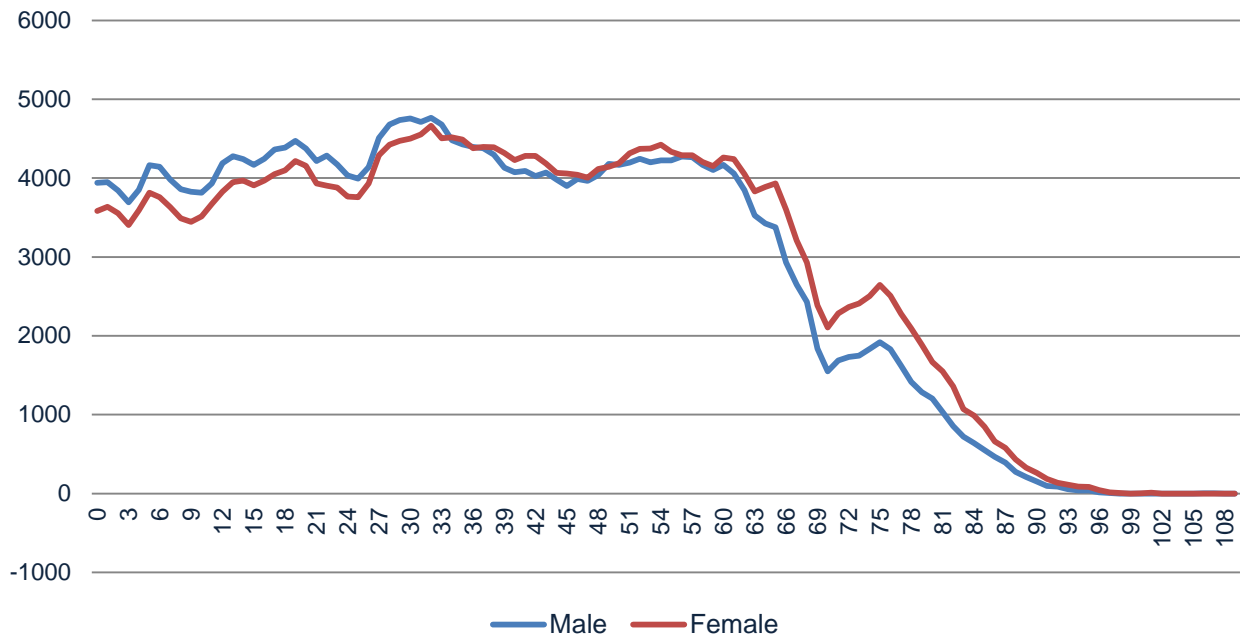
**Table 2. Population in Montenegro at the beginning, middle and the end of 2015, by age groups**

	1 January 2015			Mid-year 2015			31 December 2015		
	Total	Male	Female	Total	Male	Female	Total	Male	Female
Total	622 099	307 522	314 577	622 159	307 628	314 531	622 218	307 734	314 484
0-14	115 004	59 920	55 084	114 556	59 713	54 843	114 110	59 507	54 603
15-64	422 037	211 500	210 537	421 316	211 218	210 098	420 594	210 935	209 659
65+	85 058	36 102	48 956	86 287	36 697	49 590	87 514	37 292	50 222

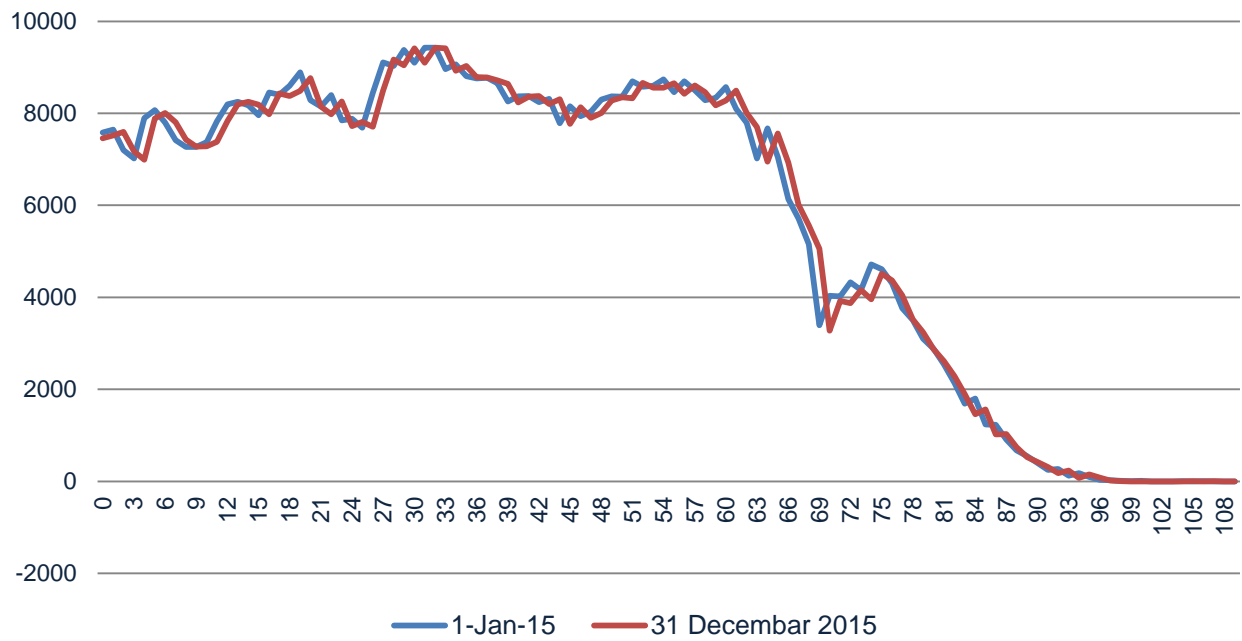
**Graph 1. Age structure of population n % by sex, mid-year 2015**



**Graph 2. Population by single age and sex, mid-year 2015**



**Graph 3. Population by single age at the beginning and the end of 2015**

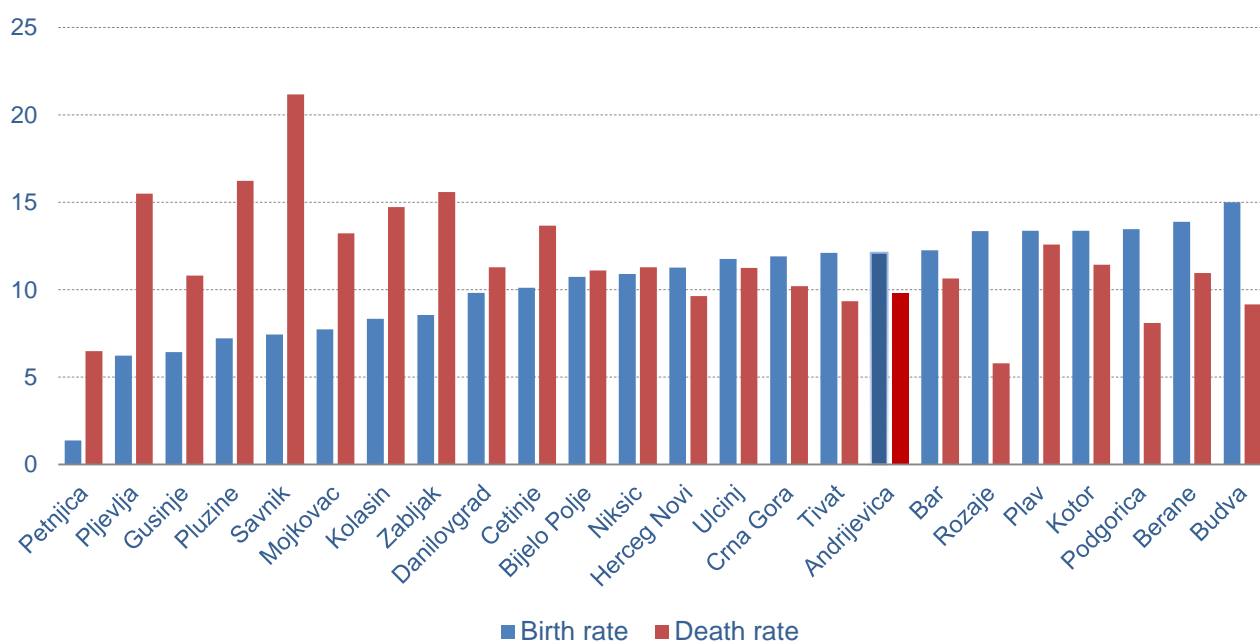


## DEMOGRAPHIC INDICATORS

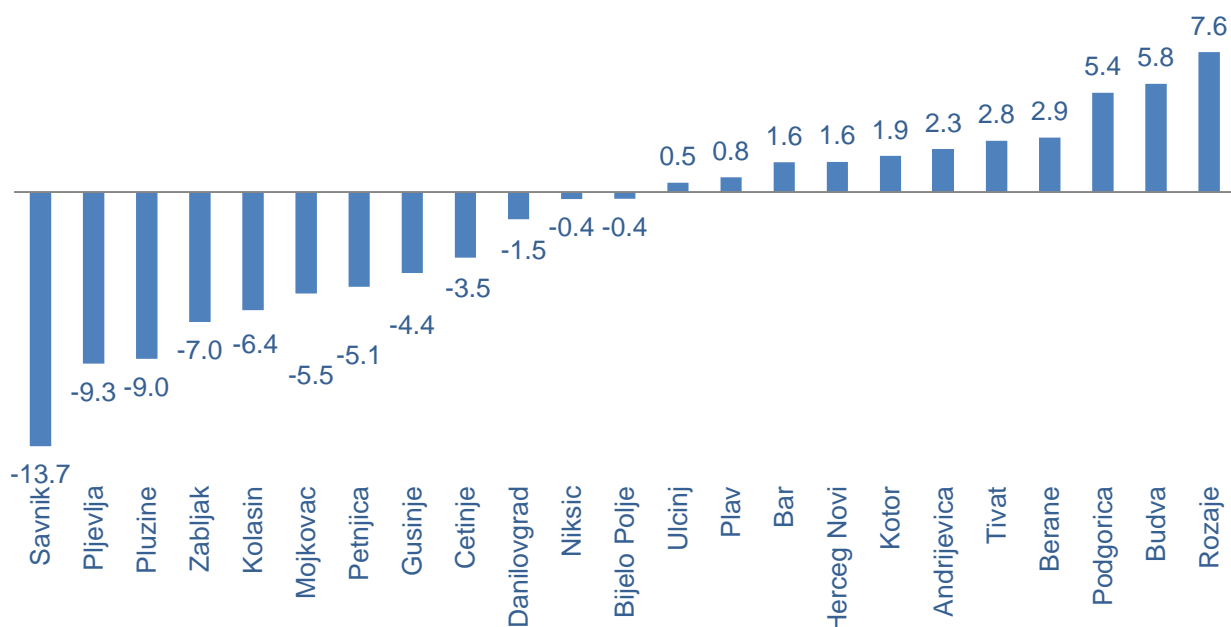
*Table 3. Indicators of vital statistics 2015*

	Rate of natural increase	Birth rate	Death rate
<b>MONTENEGRO</b>	<b>1.7</b>	<b>11.9</b>	<b>10.2</b>
Andrijevica	2.3	12.1	9.8
Bar	1.6	12.2	10.6
Berane	2.9	13.9	10.9
Bijelo Polje	-0.4	10.7	11.1
Budva	5.8	15.0	9.2
Cetinje	-3.5	10.1	13.7
Danilovgrad	-1.5	9.8	11.3
Gusinje	-4.4	6.4	10.8
Herceg Novi	1.6	11.3	9.6
Kolasin	-6.4	8.3	14.7
Kotor	1.9	13.4	11.4
Mojkovac	-5.5	7.7	13.2
Niksic	-0.4	10.9	11.3
Petnjica	-5.1	1.4	6.5
Plav	0.8	13.4	12.6
Pljevlja	-9.3	6.2	15.5
Pluzine	-9.0	7.2	16.2
Podgorica	5.4	13.5	8.1
Rozaje	7.6	13.3	5.8
Savnik	-13.7	7.4	21.2
Tivat	2.8	12.1	9.3
Ulcinj	0.5	11.8	11.3
Zabljak	-7.0	8.6	15.6

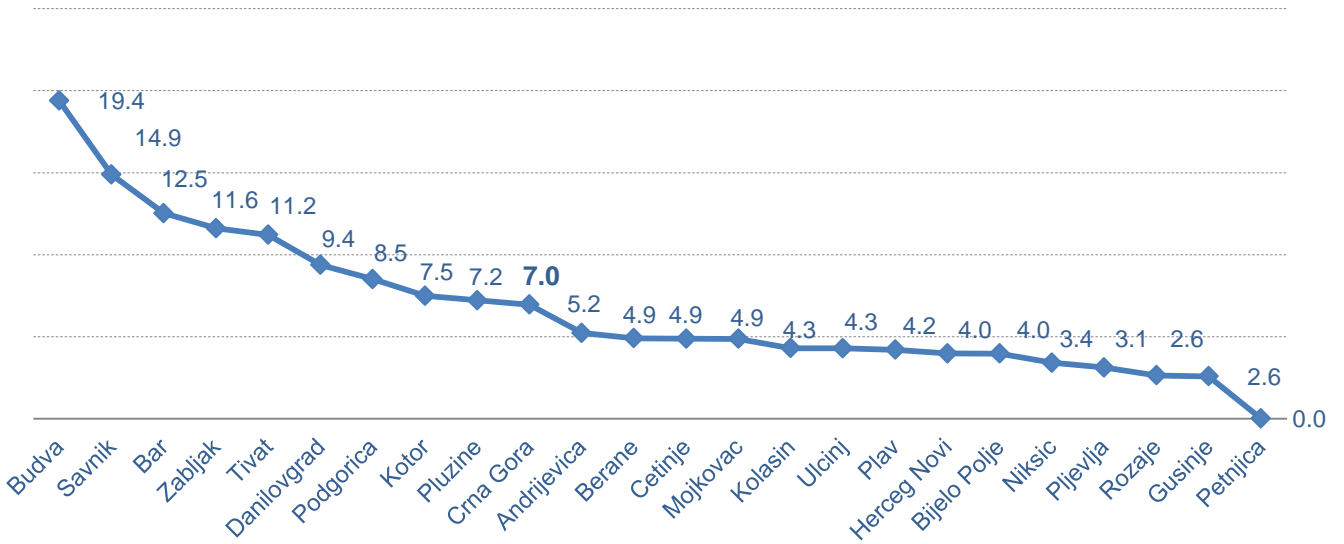
**Graph 4. Birth and death rate by municipality**



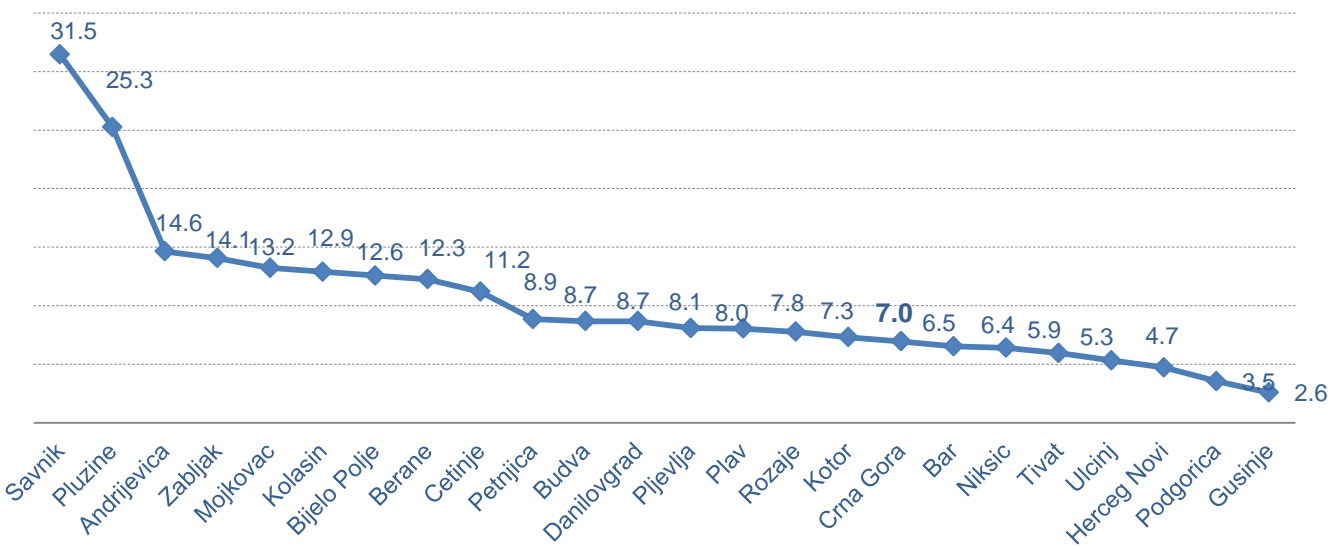
**Graph 5. Rate of natural increase by municipality**



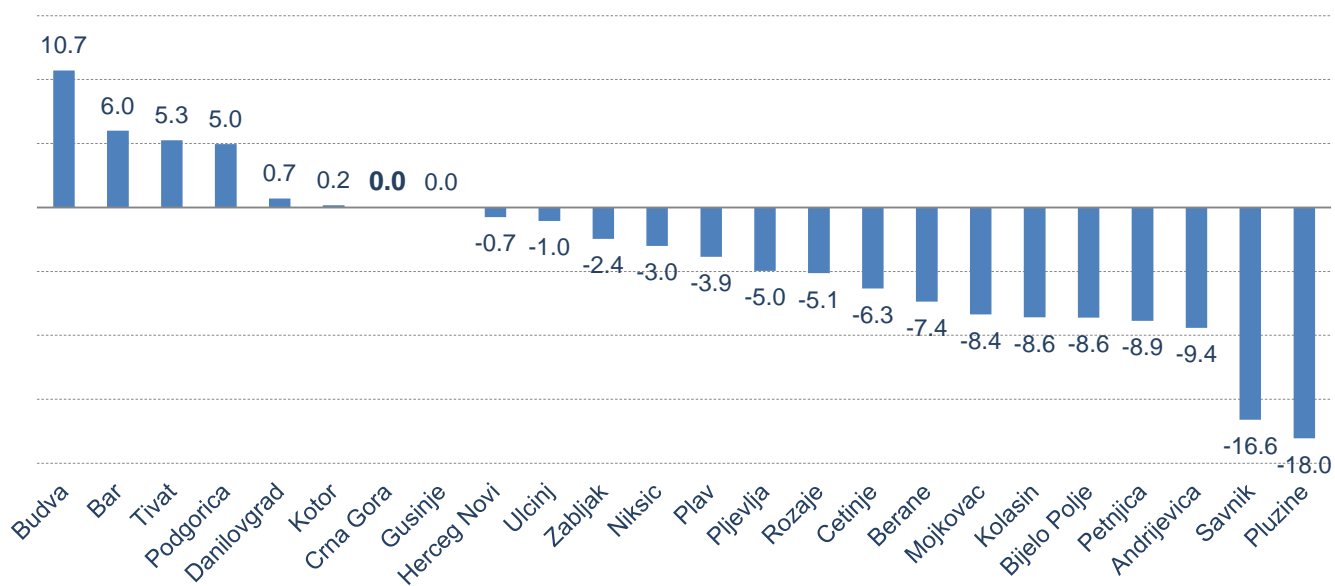
**Graph 6. Rates of immigration by municipality, 2015**



**Graph 7. Rates of emigration by municipality, 2015**



**Graph 8. Rates of migration balance by municipality, 2015**



## METHODOLOGICAL EXPLANATION

### Estimated population

Estimate number of population refers to the beginning, middle and end of 2015. The data that is related to the middle of the year is used in the calculation of demographic indicators, as well as for reporting to the United Nations. On the other hand, the population at the beginning it is requested from EUROSTAT.

Population according to the census is base for annual estimation of the population. This number is then corrected according to the results of vital statistics (natural increase) and migration flows. Results vital statistics are recorded through natural increase. In case of a positive natural increase population increases, in the case of a negative natural population growth, population decreases. Migration movements of both its citizens within Montenegro are taken into account and affect the population estimates at the level of municipalities. In estimating the population is assumed that international migration is constant number that is calculated based on the Census in 2003, then the natural growth for the period 2003-2011, as well as the 2011 census. Using these sources is calculated so called profile international net migrants per sex and aged for a period of one year. This profile will be used as a statistical adjustment in the period between censuses. The application of methods of statistical adjustment for estimates of the number of population is the need to show the real inhabitants annually.

### *Demographic indicators*

Based on the estimated number of the population, the number of births, deaths and marriages and divorces as well as data on internal migration following demographic indicators are calculated:

**Birth rate** is the ratio number of live births and estimated number of mid-year population, expressed in pro mille (per 1000 inhabitants)

**Death rate** is the ratio of number of deaths and estimated number of mid-year population, expressed in pro mille (per 1000 inhabitants).

**Natural increase rate** is the ratio of natural increase and average number of mid-year population. It is expressed in pro mille (per 1000 inhabitants).

**Marriage rate** is the ratio of number of marriages and average number of mid-year population. It is expressed in pro mille (per 1000 inhabitants).

**Divorce rate** is the ratio of divorces and estimated number of mid-year population. It is expressed in pro mille (per 1000 inhabitants).

**Infant death rate** is the ratio of number of dead infants and live born children expressed in pro mille (per 1000 inhabitants).

**Child death rate under 5 years of age** is the ratio of child deaths at age up to 5 years, and expressed in pro mille (per 1000 inhabitants)

**Vital index** is the ratio of live births to 100 deaths.

**Masculinity rate** is the ratio of number of males per 100 females in observed events.



**General fertility rate** is the ratio between the total number of live births and female fertility population (aged 15-49) during one-year period.

**Total fertility rate**, i.e. total number of live births per one woman, i.e. the sum of appropriate specific fertility rate, is calculated for the age interval from 15 to 49 by five year period.

**Immigration rate** is the ratio of immigrants and the estimated mid-year population. Usually calculated is annual immigration rate (per 1000 inhabitants).

**Emigration rate** is the ratio of emigrants and the estimated mid-year population. Usually calculated is annual emigration rate (per 1000 inhabitants).

**The rate of migration balance** is the ratio of annual net migration on the estimated mid-year population. The rate of migration balance can be obtained as the difference between immigration rates and emigration rates (per 1000 inhabitants).

**Release No. 102**

Podgorica, 30 May 2016

*Published and printed by Statistical Office of Montenegro - MONSTAT  
81000 Podgorica, IV Proleterske 2, Phone (+382) 20 230 811, Fax (+382) 20 230 814*

Release prepared by:

**Department for demography statistics, education, culture and justice**

*e-mail:* [contact@monstat.org](mailto:contact@monstat.org)

When using these data please indicate the source
---