

## The estimate of number of population and demographic indicators 2019

The purpose of production of population estimates is to collect the data necessary for the analysis of natural changes of population in Montenegro and municipalities, natality, fertility and other indicators.

According to estimates of population:

- Number of inhabitants in Montenegro in mid-2019 is 622 028;
- Number of children (aged 0-17) in Montenegro in mid-2019 is 135 533 or 21.8% of the total population;
- Working age population or the population aged 15-64 years is 414 768 or 66.7% of the total population;
- Population aged 65+ years is 95 643 or 15.4% of the total population;
- In Montenegro, on the basis of natural increase per 1 000 inhabitants, the population increases annually for one inhabitant;
- The 1 000 population per year made 5.7 marriages, which is the rate of marriages, and the divorce rate is 1.4;
- The rate of migration in Montenegro is 10.5 which means that for each of 1 000 inhabitants 10.5 persons changes their place of residence within the borders of Montenegro;
- Life expectancy at birth in 2019 was 76.7 years.

**Table 1. Basic demographic indicators, 2019**

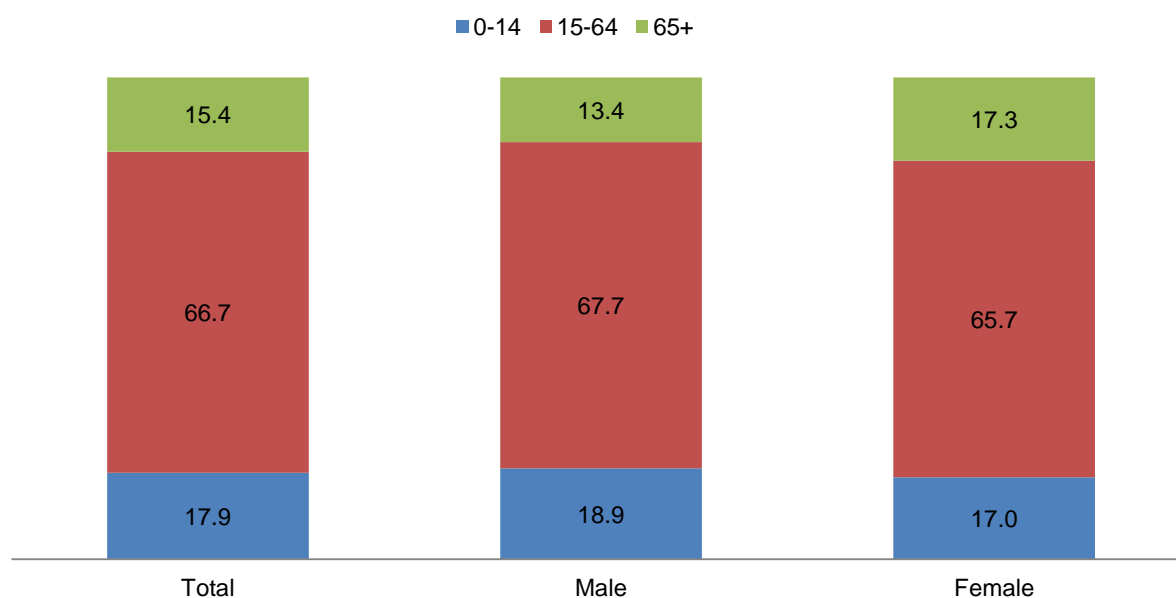
Birth rate	11.6	Infant mortality rate	2.4	Life expectancy- total	76.7
Death rate	10.6	Under five mortality rate	3.6	Life expectancy-male	74.0
Rate of natural increase	1.0	Vital index of birth per 100 deaths	109.5	Life expectancy-female	79.5
Rate of marriages	5.7	Masculinity rate of live born	109.6	Total fertility rate	1.8
Rate of divorces	1.4	Masculinity rate of dead	112.1	Rate of migrations	10.5

## THE ESTIMATE OF NUMBER OF POPULATION

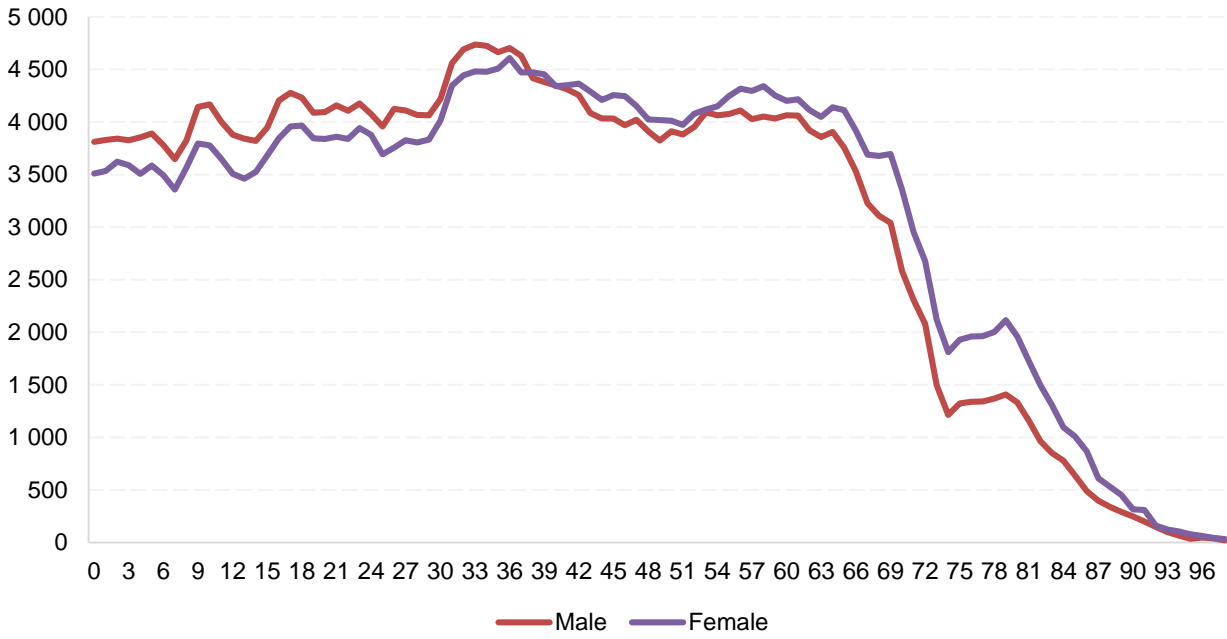
**Table 2. Population in Montenegro at the beginning, middle and the end of 2019, by age groups**

	1 January 2019			Mid-year 2019			31 December 2019		
	Total	Male	Female	Total	Male	Female	Total	Male	Female
<b>Total</b>	622 182	307 712	314 470	622 028	307 634	314 394	621 873	307 555	314 318
<b>0-14</b>	111 753	58 181	53 572	111 617	58 147	53 470	111 475	58 104	53 371
<b>15-64</b>	416 115	208 875	207 240	414 768	208 184	206 584	413 393	207 472	205 921
<b>65+</b>	94 314	40 656	53 658	95 643	41 303	54 340	97 005	41 979	55 026
<b>0-17</b>	136 099	70 843	65 256	135 533	70 579	64 954	134 959	70 303	64 656
<b>18+</b>	486 083	236 869	249 214	486 495	237 055	249 440	486 914	237 252	249 662

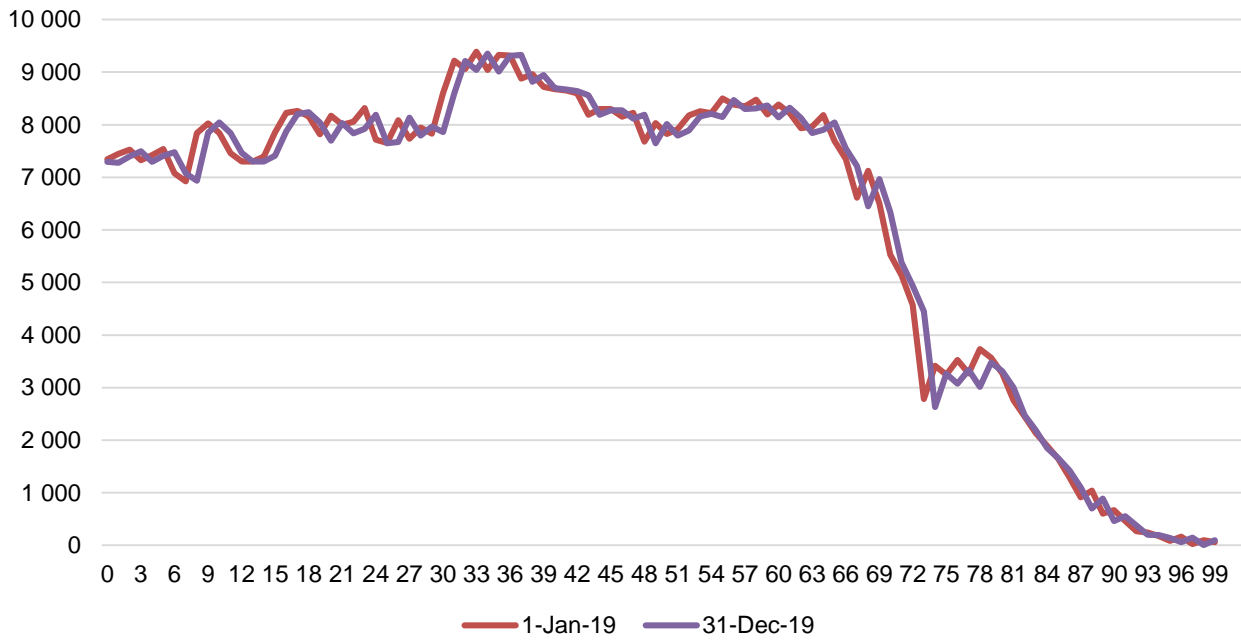
**Graph 1. Age structure of population in % by sex, mid-year 2019**



**Graph 2. Population by single age and sex, mid-year 2019**



**Graph 3. Population by single age at the beginning and the end of 2019**

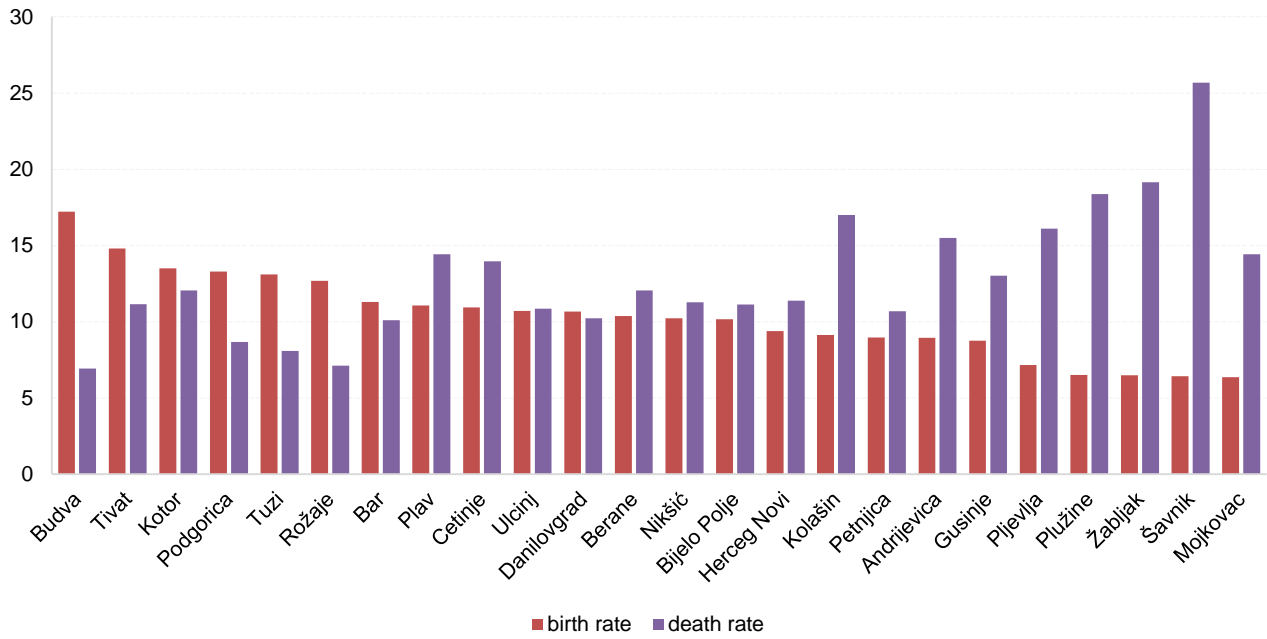


## DEMOGRAPHIC INDICATORS

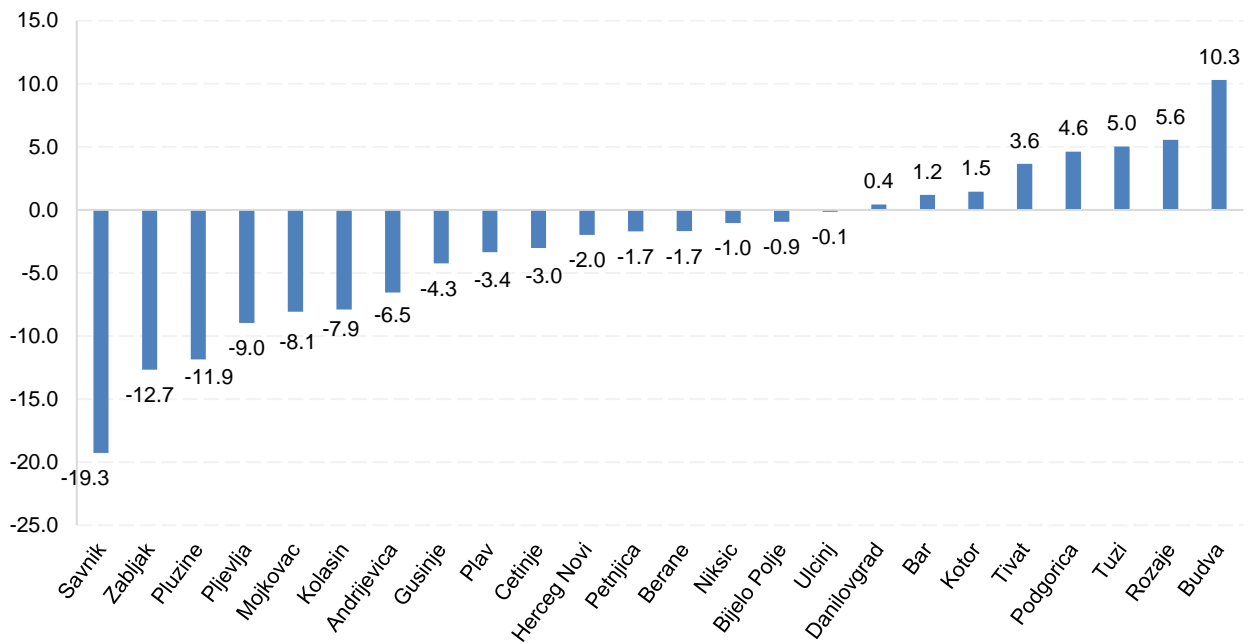
**Table 3. Indicators of vital statistics, 2019**

	Rate of natural increase	Birth rate	Death rate
<b>MONTENEGRO</b>	1.0	11.6	10.6
Andrijevisa	-6.5	8.9	15.5
Bar	1.2	11.3	10.1
Berane	-1.7	10.4	12.1
Bijelo Polje	-0.9	10.2	11.1
Budva	10.3	17.2	6.9
Cetinje	-3.0	10.9	14.0
Danilovgrad	0.4	10.7	10.2
Gusinje	-4.3	8.8	13.0
Herceg Novi	-2.0	9.4	11.4
Kolasin	-7.9	9.1	17.0
Kotor	1.5	13.5	12.0
Mojkovac	-8.1	6.4	14.4
Niksic	-1.0	10.2	11.3
Petnjica	-1.7	9.0	10.7
Plav	-3.4	11.1	14.4
Pljevlja	-9.0	7.1	16.1
Pluzine	-11.9	6.5	18.4
Podgorica	4.6	13.3	8.7
Rozaje	5.6	12.7	7.1
Savnik	-19.3	6.4	25.7
Tivat	3.6	14.8	11.1
Tuzi	5.0	13.1	8.1
Ulcinj	-0.1	10.7	10.8
Zabljak	-12.7	6.5	19.1

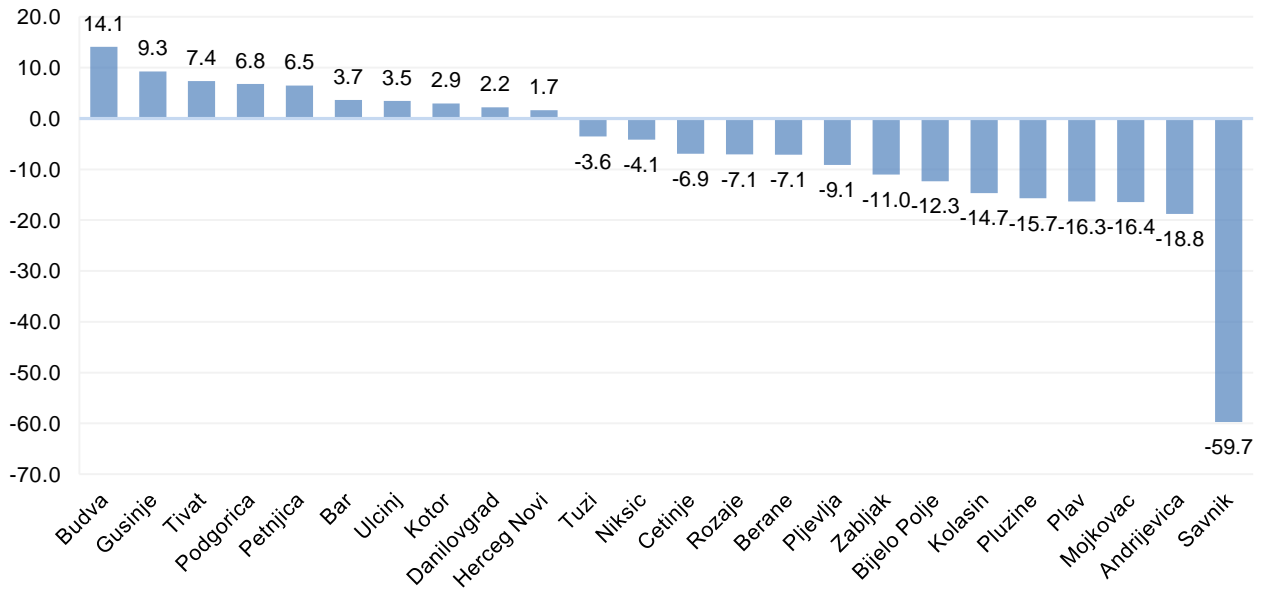
**Graph 4. Birth and death rate by municipality, 2019**



**Graph 5. Rates of natural increase by municipality, 2019**



**Graph 6. Rates of migration balance by municipality, 2019**



## METHODOLOGICAL EXPLANATION

### ***Estimated population***

Estimate number of population refers to the beginning, middle and end of the year. The data that is related to the middle of the year is used in the calculation of demographic indicators, as well as for reporting to the United Nations. On the other hand, the population at the beginning it is requested from EUROSTAT.

Population according to the census is base for annual estimation of the population. This number is then corrected according to the results of vital statistics (natural increase) and migration flows. Results vital statistics are recorded through natural increase. In case of a positive natural increase population increases, in the case of a negative natural population growth, population decreases. Migration movements of both its citizens within Montenegro are taken into account and affect the population estimates at the level of municipalities. In estimating the population is assumed that international migration is constant number that is calculated based on the Census in 2003, then the natural growth for the period 2003-2011, as well as the 2011 census. Using these sources is calculated so called profile international net migrants per sex and aged for a period of one year. This profile used as a statistical adjustment in the period between censuses. The application of methods of statistical adjustment for estimates of the number of population is the need to show the real inhabitants annually.

### ***Demographic indicators***

Based on the estimated number of the population, the number of births, deaths and marriages and divorces as well as data on internal migration following demographic indicators are calculated:

***Birth rate*** is the ratio number of live births and estimated number of mid-year population, expressed in pro mille (per 1 000 inhabitants).

***Death rate*** is the ratio of number of deaths and estimated number of mid-year population, expressed in pro mille (per 1 000 inhabitants).

***Natural increase rate*** is the ratio of natural increase and average number of mid-year population. It is expressed in pro mille (per 1 000 inhabitants).

***Marriage rate*** is the ratio of number of marriages and average number of mid-year population. It is expressed in pro mille (per 1 000 inhabitants).

***Divorce rate*** is the ratio of divorces and estimated number of mid-year population. It is expressed in pro mille (per 1 000 inhabitants).

***Infant death rate*** is the ratio of number of dead infants and live born children expressed in pro mille (per 1000 live born).

***Child death rate*** under 5 years of age is the ratio of child deaths at age up to 5 years, and expressed in pro mille (per 1 000 live born).

***Vital index*** is the ratio of live births to 100 deaths.

***Masculinity rate*** is the ratio of number of males per 100 females in observed events.

***Total fertility rate***, i.e. total number of live births per one woman, i.e. the sum of appropriate specific fertility rate, is calculated for the age interval from 15 to 49 by five-year period.

***The rate of migration balance*** is the ratio of annual net migration on the estimated mid-year population. The rate of migration balance can be obtained as the difference between immigration rates and emigration rates (per 1 000 inhabitants).

---

**Published by the Statistical Office of Montenegro (MONSTAT)**  
**81000 Podgorica, IV Proleterske 2, Phone: (+382) 20 230-811. Fax: (+382) 20 230-814**

*The release prepared by:*

**Demography and Migration Statistics Department**

[contact@monstat.org](mailto:contact@monstat.org)

---