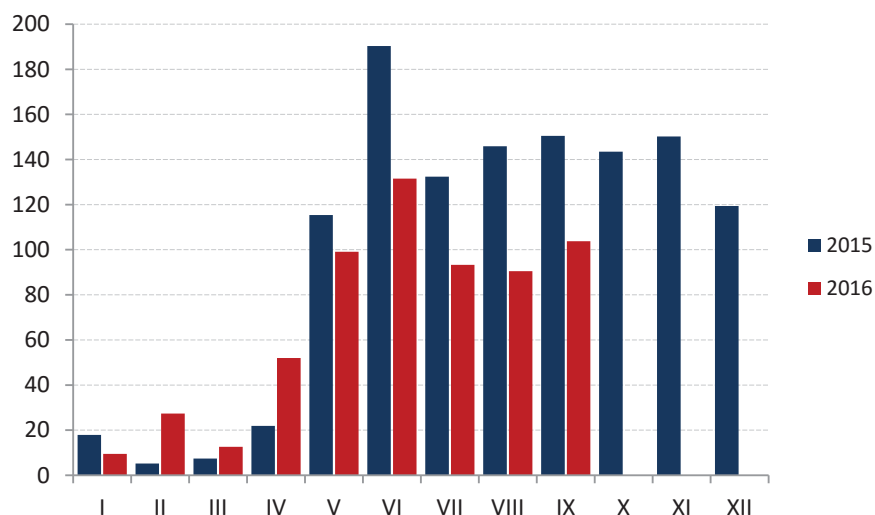


## ŠUMARSTVO / FORESTRY



Ø 2015 = 100

	Indeks Index	Ukupno Total	Proizvedeni sortimenti, m <sup>3</sup> / Production of forests assortments						
			Četinara / Conifers				Lišćara / Deciduous trees		
			trupci Saw logs	tehničko drvo Lumber	prostorno drvo Space wood	ogrijevno drvo Firewood	trupci Saw logs	prostorno drvo Space wood	ogrijevno drvo Firewood
2011	78,2	293 734	151 956	7 457	34 839	361	44 910	12 662	41 549
2012	65,6	240 900	133 062	7 138	11 124	2 303	34 545	13 108	39 620
2013	72,0	255 559	152 211	8 368	14 573	1 534	38 055	10 010	30 808
2014	84,8	308 345	181 720	9 031	32 995	1 667	36 685	12 911	33 336
<b>2015</b>	<b>100,0</b>	<b>376 589</b>	<b>203 403</b>	<b>8 862</b>	<b>55 021</b>	<b>919</b>	<b>46 510</b>	<b>41 730</b>	<b>20 144</b>
<b>Ø I – IX 2015</b>	<b>87,4</b>	<b>27 475</b>	<b>15 057</b>	<b>624</b>	<b>4 390</b>	<b>96</b>	<b>3 136</b>	<b>2 781</b>	<b>1 391</b>
<b>Ø I – IX 2016</b>	<b>68,9</b>	<b>21 568</b>	<b>10 916</b>	<b>670</b>	<b>1 787</b>	<b>117</b>	<b>3 583</b>	<b>2 609</b>	<b>1 886</b>
<b>2015</b>									
IX	150,5	50 189	23 502	829	7 692	424	6 474	6 962	4 306
X	143,5	45 730	24 081	955	6 265	200	5 526	5 670	3 033
XI	150,2	47 009	25 082	1 102	5 320	156	6 432	6 195	2 722
XII	119,4	37 026	19 181	1 060	3 930	41	6 330	4 919	1 565
<b>2016</b>									
I	9,5	2 845	1 537	54	352	326	556	6	14
II	27,4	7 949	5 667	321	1 030	7	180	684	60
III	12,6	3 824	2 114	210	504	-	496	416	54
IV	52,0	14 906	8 666	350	693	68	3 063	1 308	758
V	99,1	30 855	17 361	1 204	2 660	185	3 041	5 181	1 223
VI	131,5	40 830	22 316	1 196	4 126	146	5 567	4 177	3 302
VII	93,3	30 355	12 259	530	1 900	186	7 420	3 650	4 410
VIII	90,5	29 126	12 304	1 037	1 816	88	6 392	3 731	3 758
IX	103,8	33 425	15 989	1 129	3 006	50	5 528	4 326	3 397
<b>I – IX 2016 / I – IX 2015</b>	<b>78,8</b>	<b>78,5</b>	<b>72,5</b>	<b>107,3</b>	<b>40,7</b>	<b>122,8</b>	<b>114,2</b>	<b>93,8</b>	<b>135,5</b>