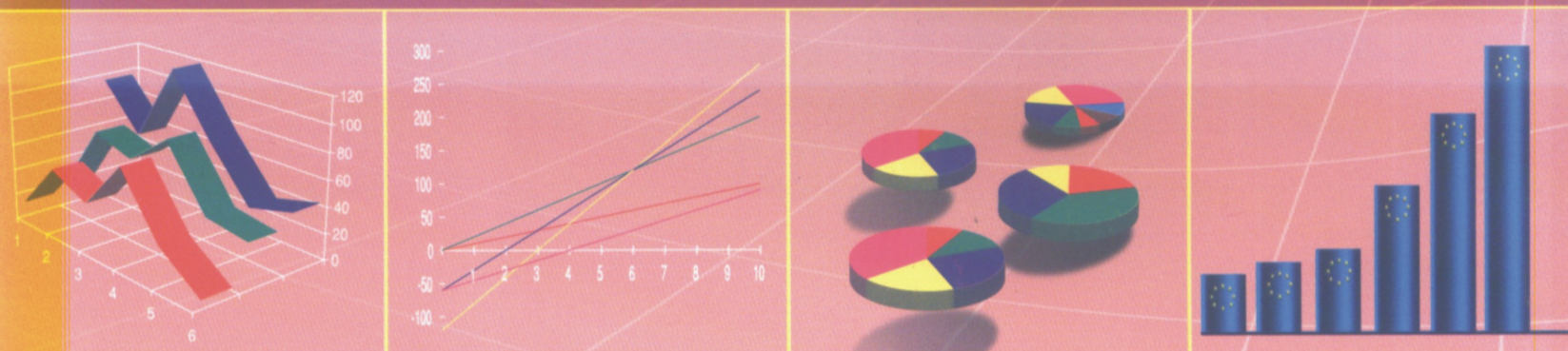


MJESEČNI STATISTIČKI PREGLED MONTHLY STATISTICAL REVIEW



2008

1

ZAVOD ZA STATISTIKU CRNE GORE
STATISTICAL OFFICE OF MONTENEGRO

GODINA LVI / YEAR (56)

ISSN 0354-365X

MJESEČNI STATISTIČKI PREGLED
MONTHLY STATISTICAL REVIEW

2008
1

PODGORICA, 2008

IZDAJE I ŠTAMPA: Zavod za statistiku Crne Gore - MONSTAT
PUBLISHED AND PRINTED BY: Statistical Office of Montenegro - MONSTAT

ODGOVARA: Radomir Đurović, direktor
RESPONSIBLE: Radomir Đurović, Director

Podgorica, IV Proleterske br. 2, Tel: +382 81 241-206
E-mail: statistika@cg.yu Web Site: www.monstat.cg.yu

CIP – Katalogizacija u publikaciji
Centralna narodna biblioteka Crne Gore, Cetinje
311 / 314

Mjesečni statistički pregled = Monthly
Statistical review. Urednik Rajko Laković. – God.
1, br.1 (1953) – . - Podgorica (IV Proleterske br. 2)
Zavod za statistiku Crne Gore – Monstat, 1992 (Podgorica:
Zavod za statistiku Crne Gore) . – 30 cm

Mjesečno. – je nastavak: Mjesečni statistički pregled
NR Crne Gore (Titograd) = ISSN 0544-912X
ISSN 0354-365X = Mjesečni statistički pregled (Podgorica)
COBISS. CG ID 07622928

UVOD

U MJESEČNOM STATISTIČKOM PREGLEDU Zavod za statistiku objavljuje statističke podatke za Crnu Goru. To su službeni statistički podaci i rezultat su rada zvaničnih statističkih službi.

Statistički podaci u MJESEČNOM STATISTIČKOM PREGLEDU sistematizovani su u dva dijela.

Prvi, OPŠTI DIO, sadrži podatke za Republiku, sa mjesečnom periodikom, a prikazuju se u serijama u standardnim tabelama. Mjesečne serije obuhvataju period od trinaest mjeseci iz tekuće i prethodne godine. Ispod odgovarajućih tabela, gdje je potrebno daju se kratka objašnjenja.

Drugi, POSEBNI DIO, sadrži podatke statističkih istraživanja koja se, ne mogu objavljivati u mjesečnim serijama.

Podaci za tekuću godinu su obično prethodni, pa su moguće manje greške koje se postepeno ispravljaju u narednim brojevima i obilježavaju se zvjezdicom, u onom broju PREGLEDA u kojem je izvršena ispravka.

Sadržaj publikacije je prilagođen međunarodnim potrebama i obavezama u smislu primjene nove Klasifikacije djelatnosti (NACE Rev1), koja se primjenjuje od 01.01.2001. godine.

INTRODUCTION

Statistical Office of Montenegro publishes statistical data for Montenegro in the MONTHLY STATISTICAL REVIEW. These are the official statistical data as a result of official statistical services.

Statistical data in MONTHLY STATISTICAL REVIEW are systemized in two parts.

The first GENERAL PART contains the data with monthly periodicity at the national level, and they are shown in series within standard tables. Monthly series include the period of 13 months from the current and previous year. Below respect tables, short explanations are given, where is required.

The second SPECIFIC PART contains data of statistical surveys that cannot be published in monthly series.

Monthly data for the current year are usually preliminary, so smaller errors are possible that are corrected gradually in the later numbers, and designated with small star in the number of the REVIEW where the correction has been made.

The publication contents is adapted to the international needs and obligations in the sense of application of the Classification of activities (NACE, REV1), in use from January 2001.

ZNACI

SYMBOLS

nema pojave	=	—	=	No occurrence of event
ne raspolaze se podatkom	=	...	=	Data not available
podatak je manji od 0,5 date jedinice mjere	=	0	=	Value not zero but less than 0,5 of the unit of E
prosjeak	=	Ø	=	Average
ispravljen podatak	=	*	=	Corrected data
nepotpun, odnosno nedovoljno provjeren podatak	=	()	=	Incomplete or insufficiently checked data

SADRŽAJ

UVOD	3
OPŠTI PREGLED INDEKSA	7
INDUSTRIJA	
Vadenje ruda i kamena	8
Proiz. prehrambenih proizvoda, pića i duvana	9
Proizv. tekstilnih tkanina	10
Proizvodnja odjevnih predmeta i krzna	11
Proizvodi od drveta, plute i sl	12
Proizvodnja celuloze, papira i prerada papira	13
Izdavanje, štampanje i reprodukcija	14
Proizvodnja hemikalija i hemijskih proizvoda	15
Proizvodnja proizvoda od gume i plastičnih masa	16
Proizvodnja proizv. od ostalih nemetalnih minerala	17
Proizvodnja osnovnih metala	18
Proizvodnja mašina, uređaja i ostala	19
Proizvodnja ostalih saobraćajnih sredstava	20
Proizvodnja el. energije, gasa i vode	21
ŠUMARSTVO	22
GRADEVINARSTVO	23
Željeznički saobraćaj	24
Putnički saobraćaj	25
Gradski i vazdušni saobraćaj	26
Promet u lukama i ptt saobraćaj	27
UNUTRAŠNJA TRGOVINA , UGOSTITELJSTVO I TURIZAM	
Promet u trgovini na malo	28
Ugostiteljstvo	29
Prodaja i otkup poljoprivrednih proizvoda	30
Turizam	31
CIJENE	
Indeksi cijena proizvođača industrijskih proizvoda	34
Indeks cijena na malo	36
Indeks cijena na malo po grupama proizvoda	37
TROŠKOVI ŽIVOTA	
Indeks troškova života	38
PRIRODNO KRETANJE STANOVNIŠTVA	39
ZAPOSLENOST	
Zaposleni po sektorima djelatnosti	41
Zaposleni po opštinama	42
PROSJEČNE ZARADE PO ZAPOSLENOM U CG	
Prosječne zarade po sektorima djelatnosti	43
Prosječne zarade bez poreza i doprinosa po sektorima djelatnosti	44
Indeksi prosječnih zarada po sektorima djelatnosti	45
Indeksi prosječnih zarada bez poreza i doprinosa po sektorima djelatnosti	46
Prosječne zarade po opštinama	47
Prosječne zarade bez poreza i doprinosa po opštinama	48
METODOLOŠKA OBJAŠNJENJA	49

CONTENTS

<u>INTRODUCTION</u>	3
<u>SUMMARY OF INDICES</u>	7
INDUSTRY	
Mining and quarrying	8
Production of food products, beverages and tobacco	9
Production of textile and textile products	10
Production of wearing apparel and fur	11
Production of wood products, cork and similar	12
Production of pulp, paper and paper products	13
Publishing, printing and reproduction	14
Production of chemicals and chemical products	15
Production of rubber and plastic products	16
Production of other mineral products	17
Production of basic metals	18
Production of metal products except machinery	19
Production of other transport equipment	20
Electricity, gas and water supply	21
<u>FORESTRY</u>	22
<u>CONSTRUCTION</u>	23
TRANSPORTATION, STORAGE AND COMMUNICATION	
Railway transport	24
Passenger transport	25
Local and air transport	26
Turnover in harbours and postal, telephone and telegraph communication	27
INTERNAL TRADE, CATERING AND TOURISM	
Turnover in retail trade	28
Catering	29
Sale and buying out of agricultural products	30
Tourism	31
PRICES	
Producer price indices for industrial products	34
Retail price indices	36
Retail price indices by groups of products	37
COSTS OF LIVING	
Costs of living index	38
<u>NATURAL POPULATION CHANGES</u>	39
EMPLOYMENT	
Employees by activity sectors	41
Employees by municipalities	42
<u>AVERAGE WAGES PER EMPLOYEE IN MONTENEGRO</u>	
Average wages by activity sectors	43
Average wages without taxes and contributions by activity sectors	44
Indices of average wages by activity sectors	45
Indices of average wages without taxes and contributions by activity sectors	46
Average wages per municipality	47
Average wages without taxes and contributions by municipality	48
<u>METHODOLOGICAL EXPLANATIONS</u>	49

OPŠTI PREGLED INDEKSA

SUMMARY OF INDICES

	2006 2005	Kumula- tiv ¹⁾ Cumulative I - XII 2007 I - XII 2006	MJESEČNI INDEKSI / MONTHLY INDICES \varnothing 2006=100													
			2006		2007											
			N	D	J	F	M	A	M	J	J	A	S	O	N	D
INDUSTRIJA – ukupno INDUSTRIJA – total	98	100	105	110	85	97	108	96	93	89	89	99	98	117	112	119
ŠUMARSTVO / FORESTRY																
Iskorišćavanje šuma / Utilization of forests	115	81	94	72	3	2	9	27	71	117	138	193	153	149	62	44
SAOBRAĆAJ, SKLADIŠTENJE I VEZE / Transportation, storage and communications																
Željeznički / Railway transport																
Prevoz robe t – km Transport of goods t – km	139		109	117	103	93	116	115	97	109	108	98	89	96	91	...
Prevoz putnika, p – km Passengers transport, p – km	86		169	169	73	50	55	71	66	119	119	137	128	64	55	...
Drumski / Road transport																
Prevoz robe t – km Transport of goods t – km	91	126	95	77	104	114	127	121	121	114	131	132	142	138	135	134
Prevoz putnika, p – km Passengers transport, p – km	84	123	107	104	110	98	108	114	119	132	161	171	130	111	112	84
Pomorski / Marine transport																
Prevoz robe t – milje / Transport of goods t – miles	76	107	132	111	63	75	72	56	75	88	325	181	125	81	75	63
PROMET ROBE ²⁾ TURNOVER OF GOODS																
Promet u ugostiteljstvu Turnover in catering	98	105	49	62	24	23	26	39	67	169	232	312	225	45	50	47
TURIZAM / TOURISM																
Posjete turista / Arrivals of tourists	116	119	16	22	22	20	24	43	82	159	402	443	167	42	20	22
Noćenja turista / Tourist overnight stays	114	123	10	12	15	12	13	29	61	153	433	546	123	29	11	12
CIJENE PROIZVOĐAČA INDUSTRIJSKIH PROIZVODA Producers price indices for industrial products	104	108	101	101	101	102	105	106	106	106	111	111	111	112	115	115
CIJENE NA MALO RETAIL PRICES																
Opšti indeks / General index	109	109	101	105	106	108	108	110	113	108	106	111	117	117	118	120
Poljoprivredni proiz. (sa sezonskim) / Agricultural products (with seasonal)	109	109	101	105	106	108	108	110	113	108	106	111	117	117	118	120
Industrijski proizvodi / Industrial products	102	104	100	100	101	101	101	102	102	102	105	105	106	107	108	108
Robe / Goods	102	104	100	101	101	101	101	102	103	103	105	105	106	107	108	109
Usluge / Services	101	104	101	101	101	101	101	101	101	102	103	103	109	109	109	109
TROŠKOVI ŽIVOTA / Costs of living	103	104	101	101	102	102	102	102	103	102	104	105	107	108	109	109
ZAPOSŁ. – UKUPNO Employment - total	104	104	102	100	100	101	102	102	104	105	105	105	105	104	104	106
NOMINALNA ZARADA BEZ POREZA I DOPRINOSA ³⁾ Nominal wages without taxes and contributions	115	115	102	114	107	114	112	115	117	118	116	119	122	122	129	133
REALNA ZARADA BEZ POREZA I DOPRINOSA Real wages without taxes and contributions	112	110	101	113	106	113	110	112	113	116	111	114	114	113	118	122

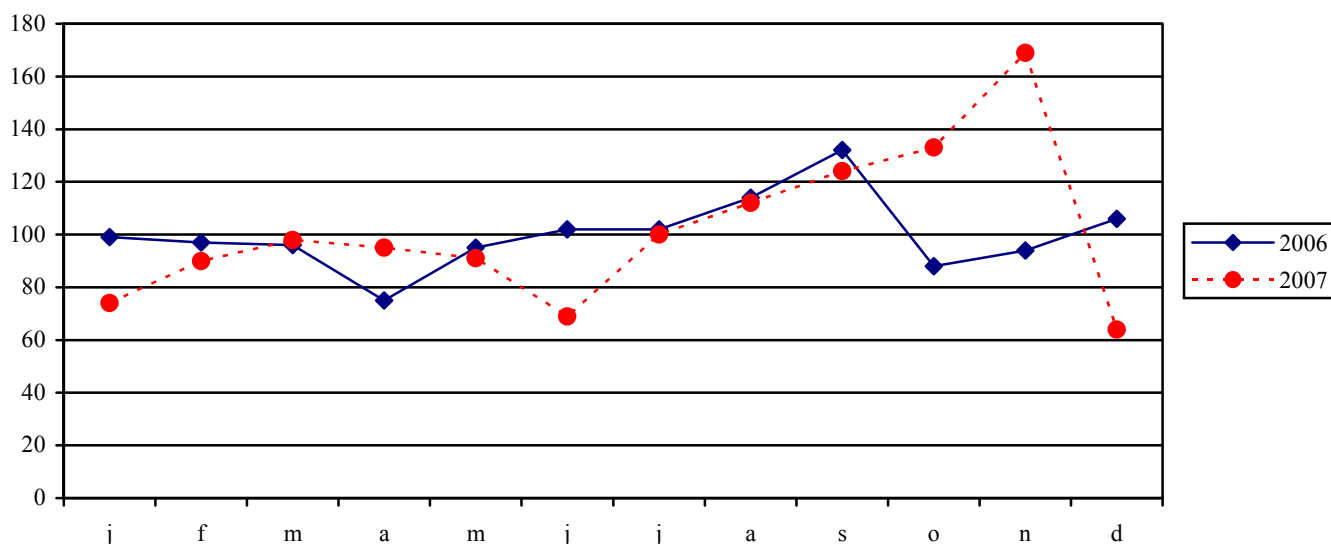
¹⁾ Daje se odnos za period tekuće prema istom periodu prethodne godine. / It represents the ratio of period in the current year to the same period in the previous year

²⁾ U tekućim cijenama. / At current prices

³⁾ Podatak urađen u skladu sa metodološkim objašnjenjima na strani 46. i odnosi se na 2007. godinu. / Data is prepared according to methodological explanations given on page 46 and refers to the year 2007.

VAĐENJE RUDA I KAMENA MINING AND QUARRYING

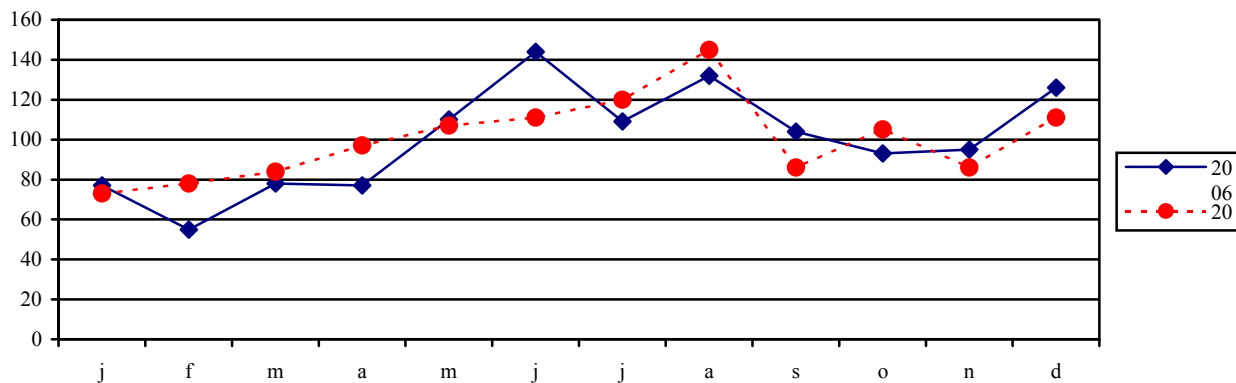
Ø 2006 = 100



	Indeks Index	Lignit, t <i>Lignite, t</i>	Crveni Boksit, t <i>Red bauxite, t</i>	Oblikovani mermerni blokovi m ³ <i>Formed marble blocks m³</i>	Drobljeni i nedrobljeni kamen, m ³ <i>Crude or crashed stone, m³</i>	Tucanik, m ³ <i>Gravel, m³</i>	Obična kamen sitnež, m ³ <i>Plain tiny stone, m³</i>	Morska so, t <i>Sea salt, t</i>	
2002	101	1750716	611500	3988	72523	54519	29433	-	2002
2003	102	1617847	540051	2913	49981	77199	40399	32500	2003
2004	97	1514264	610000	1390	41936	43087	33919	20000	2004
2005	97	1288016	672345	2418	92506	47948	26149	15000	2005
2006	100	1502334	659370	3920	98360	82933	54191	5000	2006
2006 Ø Jan.- Dec.	100	125195	54948	327	8197	6911	4516	417	2006 Ø Jan.- Dec.
2007 Ø Jan.- Dec.	102	99626	55588	381	13498	6910	5014	1667	2007 Ø Jan.- Dec.
2006 Novembar	94	131519	47010	275	9762	5951	6860	-	2006 November
Decembar	106	130424	63046	187	8550	5279	7755	-	December
2007 Januar	74	115769	36451	252	4582	1453	4850	-	2007 January
Februar	90	135478	44362	274	14917	7185	5450	-	February
Mart	98	138604	51338	327	10476	10521	5400	-	March
April	95	119793	50988	250	17168	12178	7436	-	April
Maj	91	69821	62289	455	12001	9639	6727	-	May
Jun	69	5410	51338	508	31221	2633	7927	-	June
Jul	100	10221	92204	540	10356	5278	750	-	July
Avgust	112	90710	67003	400	7731	144	600	3000	August
Septembar	124	76704	42285	321	6388	7718	2642	10000	September
Oktobar	133	132327	42705	317	18469	8500	6809	7000	October
Novembar	169	122270	126077	651	14651	9765	5623	-	November
Decembar	64	178408	13	280	14010	7900	5951	-	December

PROIZVODNJA PREHRAMBENIH PROIZVODA, PIĆA I DUVANA
PRODUCTION OF FOOD PRODUCTS, BEVERAGES AND TOBACCO

Ø 2006 = 100



	Indeks Index	Svježe meso, t Fresh meat, t	Suhomesnati proizvodi, t Delicatessen	Kobasičarski proizvodi, t Sausages, tons	Rafinis. jestivo ulje, t Refined oils, t	Pasteri- zovano mlijeko, hl Pasteurised milk, hl	Pšenično brašno, t Wheat flour, ton, t	Brašno za stočnu hranu, t Fodder flour, t	Kompletna krmna smješa, t Prepared animal feeds, t	
2002	91	894	274	322	185	113462	22144	8130	1919	2002
2003	92	829	197	275	17	72709	15572	5269	4583	2003
2004	113	699	250	159	44	48746	34779	13659	7600	2004
2005	110	578	691	1045	-	36099	11305	3049	12412	2005
2006	100	739	912	1907	159	28537	16650	4197	15461	2006
2006 Ø Jan.- Dec.	100	62	76	159	13	2378	1688	350	1288	2006 Ø Jan.- Dec.
2007 Ø Jan.- Dec.	99	84	92	199	-	2250	1774	368	1180	2007 Ø Jan.- Dec.
2006 Novembar	95	83	71	197	39	2256	1515	371	1414	2006 November
Decembar	126	113	202	237	-	2254	1512	379	1201	December
2007 Januar	73	57	75	115	-	2127	1500	375	717	2007 January
Februar	78	49	78	160	-	2168	1580	373	1218	February
Mart	84	66	58	122	-	2485	1600	371	1484	March
April	97	62	83	299	-	2596	1630	370	1360	April
Maj	107	85	85	155	-	2488	1600	378	1393	May
Jun	111	105	85	200	-	2735	1675	369	1184	June
Jul	120	69	79	245	-	2301	1679	368	1008	July
Avgust	145	73	99	251	-	1979	1675	363	1178	August
Septembar	86	110	107	223	-	1512	2234	361	1054	September
Oktobar	105	117	114	228	-	2242	2419	360	1224	October
Novembar	86	109	100	175	-	2309	1743	362	1034	November
Decembar	111	111	135	220	-	2060	1947	360	1305	December

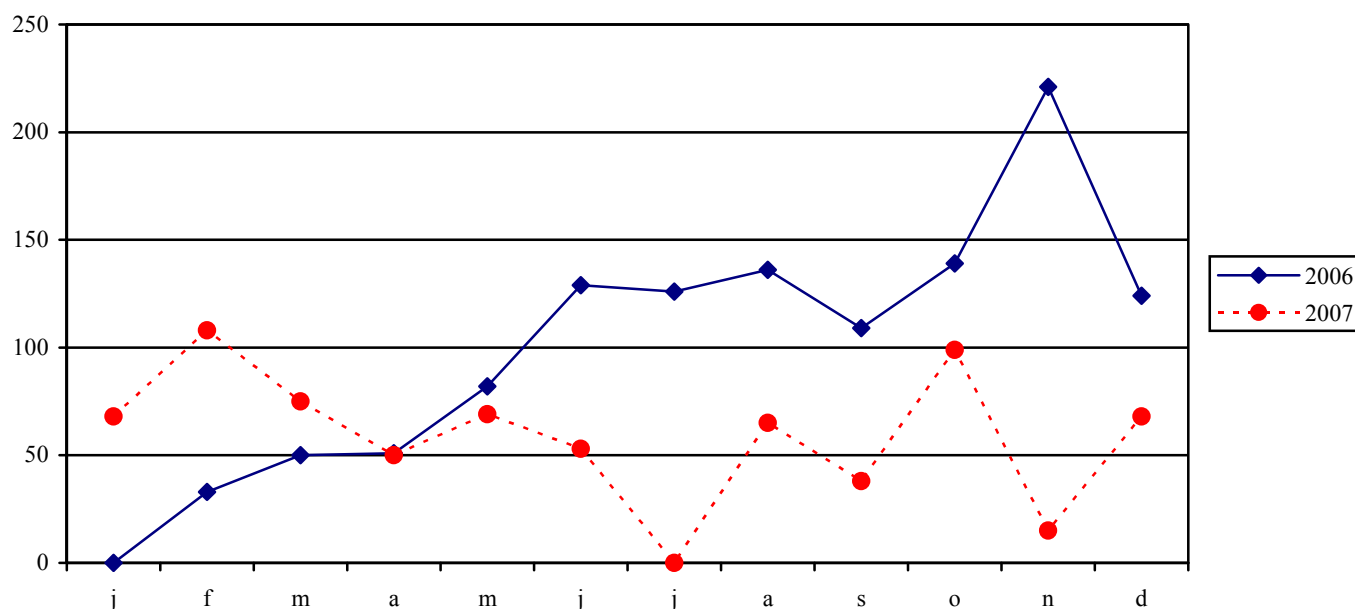
/ nastavak /

/ continued /

	Indeks Index	Pšenični i ostale vrste hljeba, t Wheat bread and other types, t	Pržena kafa, t Roasted coffee, t	Lozova Rakija, hl Grape brandy, hl	Prirodna vina, hl Natural vine, hl	Pivo, hl Beer, hl	Fermentisani duvan, t Tobacco, fermented, t	Cigarete s filterom mil. kom. Cigarettes, million pcs.	
2002	91	20247	221	13898	100269	301213	186	1141	2002
2003	92	18640	223	12531	86517	553282	293	793	2003
2004	113	20746	250	13041	93872	491189	300	2000	2004
2005	110	22787	290	7294	100704	517533	448	1282	2005
2006	100	24166	330	7897	121701	516942	554	433	2006
2006 Ø Jan.- Dec.	100	2014	28	658	10142	43079	46	36	2006 Ø Jan.- Dec.
2007 Ø Jan.- Dec.	99	2102	39	479	9180	44532	28	39	2007 Ø Jan.- Dec.
2006 Novembar	95	1992	31	485	8684	38689	-	26	2006 November
Decembar	126	2120	35	1029	20999	38442	-	19	December
2007 Januar	73	1624	22	570	964	20851	-	67	2007 January
Februar	78	1638	27	54	15307	30134	-	18	February
Mart	84	1826	34	156	7833	40352	-	53	March
April	97	1923	35	250	8066	42919	-	48	April
Maj	107	2186	41	198	10970	60077	-	-	May
Jun	111	2252	32	220	10390	60968	-	26	June
Jul	120	2562	41	293	6928	73538	-	41	July
Avgust	145	2352	50	255	10954	74149	332	53	August
Septembar	86	2167	38	1354	6667	26650	-	-	September
Oktobar	105	2400	49	613	9068	34881	-	68	October
Novembar	86	2130	43	1049	8992	27927	-	32	November
Decembar	111	2169	52	731	14019	41940	-	57	December

PROIZVODNJA TEKSTILNIH TKANINA
MANUFACTURE OF TEXTILE AND TEXTILE PRODUCTS

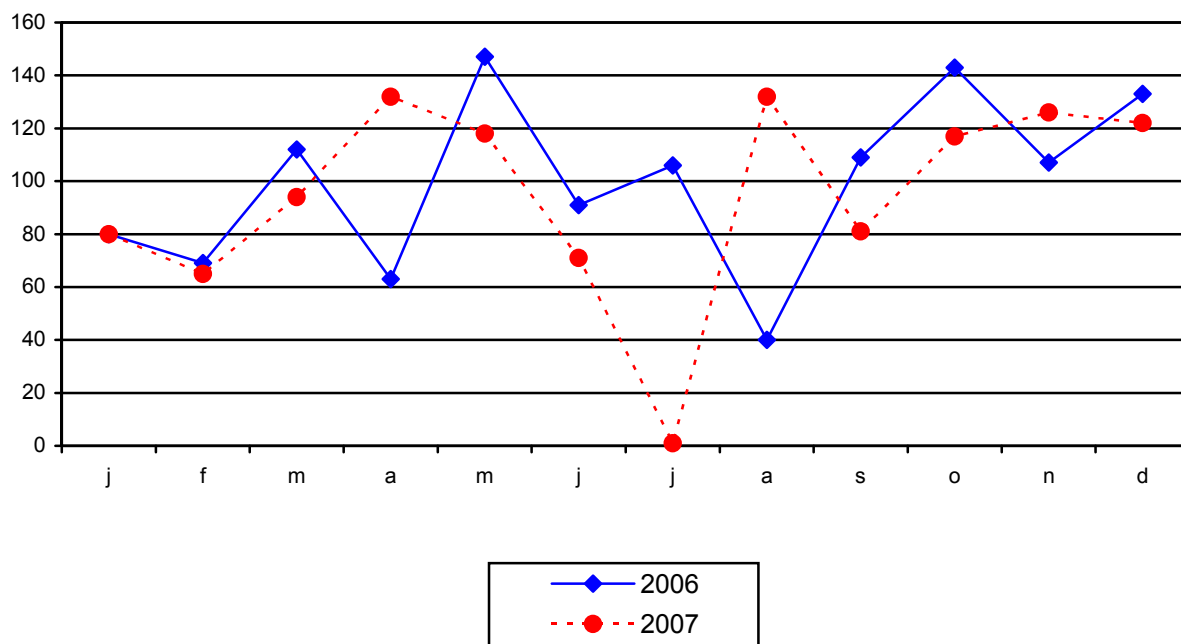
Ø 2006 = 100



	Indeks <i>Index</i>	Pamučno kardirano predivo, t <i>Cotton yarn, tons</i>	Sirove tkanine pamučne hilj. m ² <i>Cotton raw fabrics m²</i>	Vunene tkanine hilj. m ² <i>Woollen fabrics m²</i>	Konfekcija posteljnog rublja hilj. m ² <i>Ready-made bed linens thous. m²</i>	Čarape (muške, ženske, dječije) hilj. pari <i>Hosiery (male, female, children), thous. pairs</i>	
2002	396	103	538	194	154	8	2002
2003	318	131	536	104	158	5	2003
2004	188	33	211	67	95	173	2004
2005	67	12	7	55	11	8	2005
2006	100	-	-	60	84	14	2006
2006 Ø Jan.- Decembar	100	-	-	5	7	1	2006 Ø Jan.- Dec.
2007 Ø Jan.- Decembar	59	-	-	2	5	1	2007 Ø Jan.- Dec.
2006 Novembar	221	-	-	8	20	2	2006 Novembar
Decembar	124	-	-	5	11	-	Decembar
2007 Januar	68	-	-	-	9	-	2007 January
Februar	108	-	-	-	14	1	February
Mart	75	-	-	3	6	2	March
April	50	-	-	-	6	2	April
Maj	69	-	-	5	3	2	May
Jun	53	-	-	4	2	2	June
Jul	-	-	-	-	-	-	July
Avgust	65	-	-	7	1	-	August
Septembar	38	-	-	2	1	-	September
Oktobar	99	-	-	2	11	-	October
Novembar	15	-	-	-	2	-	November
Decembar	68	-	-	-	9	-	December

PROIZVODNJA ODJEVNIH PREDMETA I KRZNA
MANUFACTURE OF WEARING APPAREL AND FUR

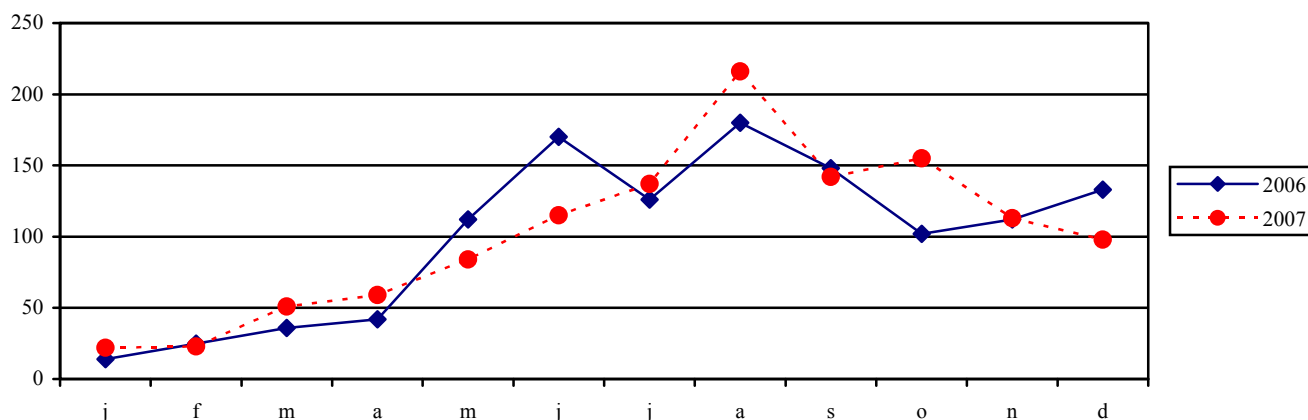
Ø 2006 = 100



	Indeks <i>Index</i>	Proizvodnja odjeće, hilj. m ² <i>Clothing, Thous., m²</i>	Trikotažno rublje, t <i>Knitted underwear, t</i>	Ostalo dječije rublje hilj. m ² <i>Other children underwear, thous, m²</i>	
2002	104	20	75	329	2002
2003	77	14	79	172	2003
2004	103	-	63	225	2004
2005	87	6	50	204	2005
2006	100	1	56	252	2006
2006 Ø Jan.- Decembar	100	-	5	21	2006 Ø Jan.- Dec.
2007 Ø Jan.- Decembar	95	-	13	19	2007 Ø Jan.- Dec.
2006 Novembar	107	-	5	19	2006 November
Decembar	133	1	3	31	December
2007 Januar	80	-	6	4	2007 January
Februar	65	-	3	13	February
Mart	94	-	10	22	March
April	132	-	5	12	April
Maj	118	-	3	29	May
Jun	71	-	2	14	June
Jul	1	-	2	-	July
Avgust	132	-	7	44	August
Septembar	81	-	21	16	September
Oktobar	117	-	21	25	October
Novembar	126	-	29	21	November
Decembar	122	-	44	27	December

PROIZVODI OD DRVETA, PLUTE I SLIČNO
MANUFACTURE OF WOOD PRODUCTS, CORK AND SIMILAR

Ø 2006 = 100



	Indeks Index	Rezana grada smrče i jele, m ³ <i>Spruce and fir lumber, m³</i>	Rezana grada bukve, m ³ <i>Beech lumber, m³</i>	Impregnacija drveta, m ³ <i>Impregnation of wood, m³</i>	Bukov furnir, m ³ <i>Beech veneer sheets, m³</i>	Balkonska vrata, kompletna i ostala vrata, kom <i>Balcony doors and other doors</i>	
2002	77	30846	5443	2879	545	14405	2002
2003	63	26068	6339	4814	415	6421	2003
2004	76	37038	7639	4247	120	6894	2004
2005	101	59158	22476	4586	-	2670	2005
2006	100	70130	6642	-	-	4690	2006
2006 Ø Jan.- Decembar	112	6996	586	-	-	261	2006 Ø Jan.- December
2007 Ø Jan.- Decembar	133	7134	1166	-	-	836	2007 Ø Jan.- December
2006 Novembar	112	6996	586	-	-	261	2006 November
Decembar	133	7134	1166	-	-	836	December
2007 Januar	22	1287	447	-	-	105	2007 January
Februar	23	1140	510	-	-	110	February
Mart	51	2731	395	-	-	102	March
April	59	3290	380	-	-	106	April
Maj	84	4855	624	-	-	155	May
Jun	115	6488	946	-	-	183	June
Jul	137	7990	949	-	-	185	July
Avgust	216	14520	836	-	-	179	August
Septembar	142	9399	1174	-	-	184	September
Oktobar	155	8857	1136	-	-	171	October
Novembar	113	7814	463	-	-	165	November
Decembar	98	6092	526	-	-	185	December

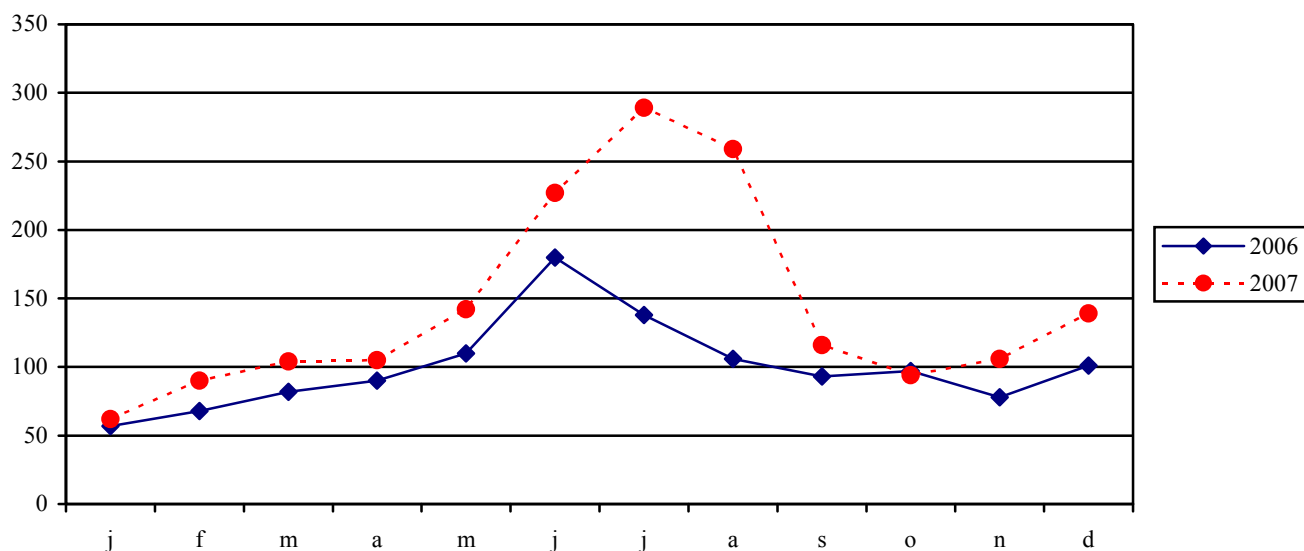
/ nastavak /

/ continued /

	Indeks Index	Prozori (s nevezanim i vezanim krilima), kom. <i>Windows (with or without wings), pcs.</i>	Plakari m ³ <i>Closets, m³</i>	Bukov parket m ² <i>Beech parquet m²</i>	Drvene stambene kuće m ³ <i>Wooden houses, m³</i>	
2002	77	5341	2682	19023	661	2002
2003	63	2926	212	4015	2091	2003
2004	76	3946	810	1880	912	2004
2005	101	816	649	4500	448	2005
2006	100	2850	739	5500	62	2006
2006 Ø Jan.- Decembar	112	65	32	500	-	2006 Ø Jan.- December
2007 Ø Jan.- Decembar	133	833	89	500	-	2007 Ø Jan.- December
2006 Novembar	112	65	32	500	-	2006 November
Decembar	133	833	89	500	-	December
2007 Januar	22	-	48	400	-	2007 January
Februar	23	-	72	100	-	February
Mart	51	-	85	500	-	March
April	59	-	94	500	-	April
Maj	84	-	119	500	-	May
Jun	115	-	132	500	-	June
Jul	137	-	127	500	-	July
Avgust	216	-	132	500	-	August
Septembar	142	-	119	500	-	September
Oktobar	155	-	119	500	-	October
Novembar	113	-	112	500	-	November
Decembar	98	-	89	500	-	December

PROIZVODNJA CELULOZE, PAPIRA I PRERADA PAPIRA
MANUFACTURE OF PULP, PAPER AND PAPER PRODUCTS

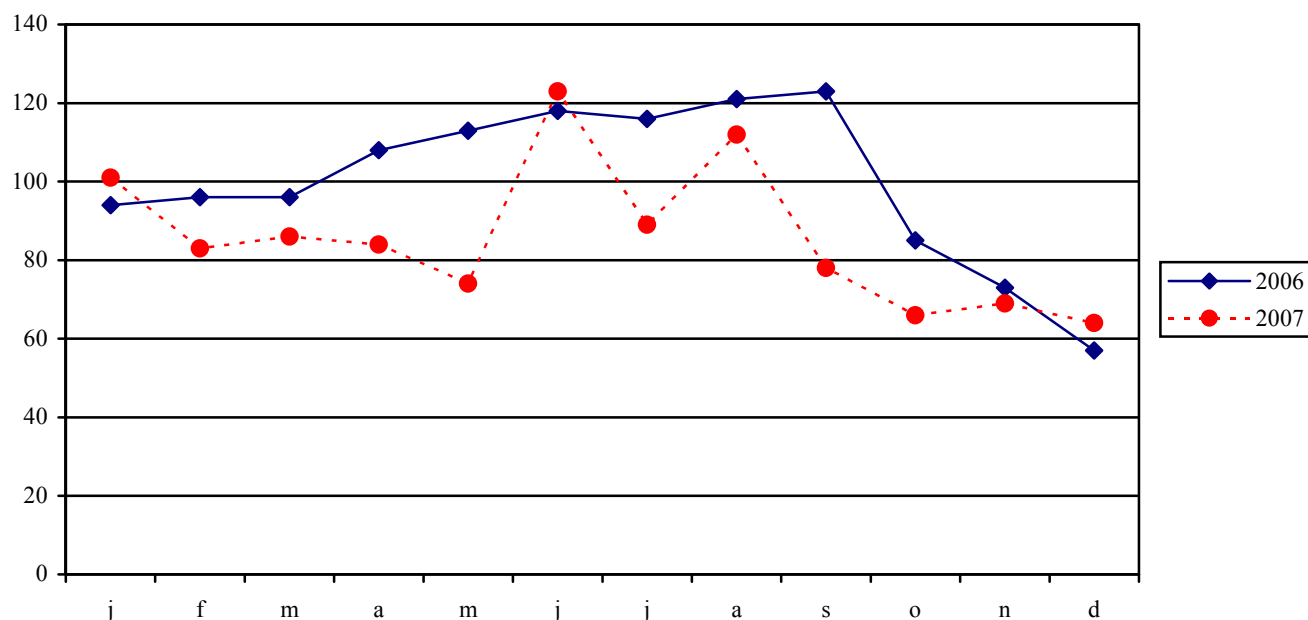
Ø 2006 = 100



	Indeks <i>Index</i>	Bezdrveni štamparski papir, t <i>Rag paper for printing, t</i>	Ostali pisaći papir, t <i>Other writing paper, t</i>	Ambalaža od valovite lepenke, t <i>Corrugated cardboard containers, t</i>	
2002	260	2414	14	962	2002
2003	69	74	2	1055	2003
2004	63	-	-	1191	2004
2005	115	470	1	1150	2005
2006	100	162	-	1257	2006
2006 Ø Jan.- Decembar	100	14	-	105	2006 Ø Jan.- December
2007 Ø Jan.- Decembar	145	-	-	128	2007 Ø Jan.- December
2006 Novembar	78	-	-	94	2006 November
Decembar	101	-	-	145	December
2007 Januar	62	-	-	67	2007 January
Februar	90	-	-	112	February
Mart	104	-	-	125	March
April	105	-	-	102	April
Maj	142	-	-	140	May
Jun	227	-	-	151	June
Jul	289	-	-	160	July
Avgust	259	-	-	150	August
Septembar	116	-	-	126	September
Oktobar	94	-	-	113	October
Novembar	106	-	-	133	November
Decembar	139	-	-	151	December

IZDAVANJE, ŠTAMPANJE I REPRODUKCIJA
PUBLISHING, PRINTING AND REPRODUCTION

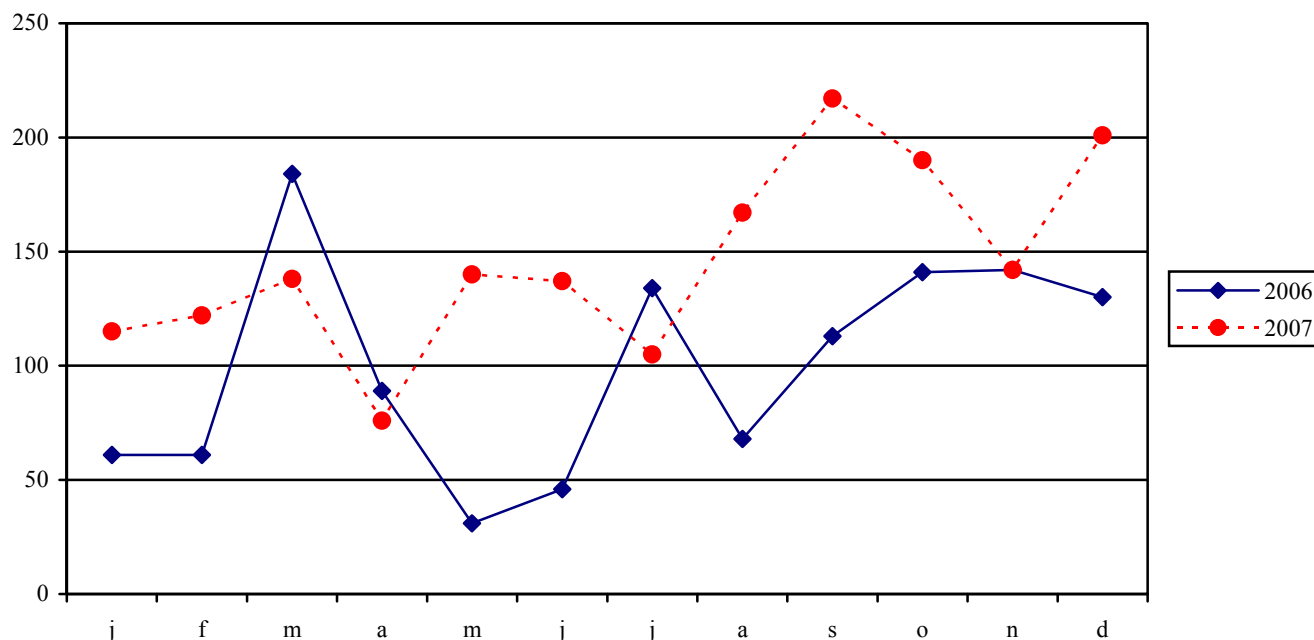
Ø 2006 = 100



	Indeks <i>Index</i>	Novine i časopisi, t <i>Newspapers and magazines, t</i>	Knjige i brošure, t <i>Books and brochures, t</i>	Višebojna agitaciona štampa, t <i>Multi-colour advertising, t</i>	Ostali jednobojni i višebojni obrasci, t <i>Other mono- colour and multi-colour forms</i>	
2002	103	1352	375	213	187	2002
2003	106	1486	363	290	270	2003
2004	93	1324	313	268	271	2004
2005	99	1309	418	252	278	2005
2006	100	1165	392	174	432	2006
2006 Ø Jan.- Decembar	100	97	33	15	36	2006 Ø Jan.- December
2007 Ø Jan.- Decembar	86	110	38	16	15	2007 Ø Jan.- December
2006 Novembar	73	81	21	8	26	2006 November
Decembar	57	91	11	6	17	December
2007 Januar	101	107	30	18	30	2007 January
Februar	83	109	28	20	13	February
Mart	86	114	31	20	13	March
April	84	112	30	18	15	April
Maj	74	107	25	13	16	May
Jun	123	132	62	32	13	June
Jul	89	104	66	14	7	July
Avgust	112	107	108	6	13	August
Septembar	78	110	25	18	13	September
Oktobar	66	100	18	13	13	October
Novembar	69	106	17	14	14	November
Decembar	64	107	18	10	14	December

PROIZVODNJA HEMIKA LIJA I HEMIJSKIH PROIZVODA
MANUFACTURE OF CHEMICALS AND CHEMICALS PRODUCTS

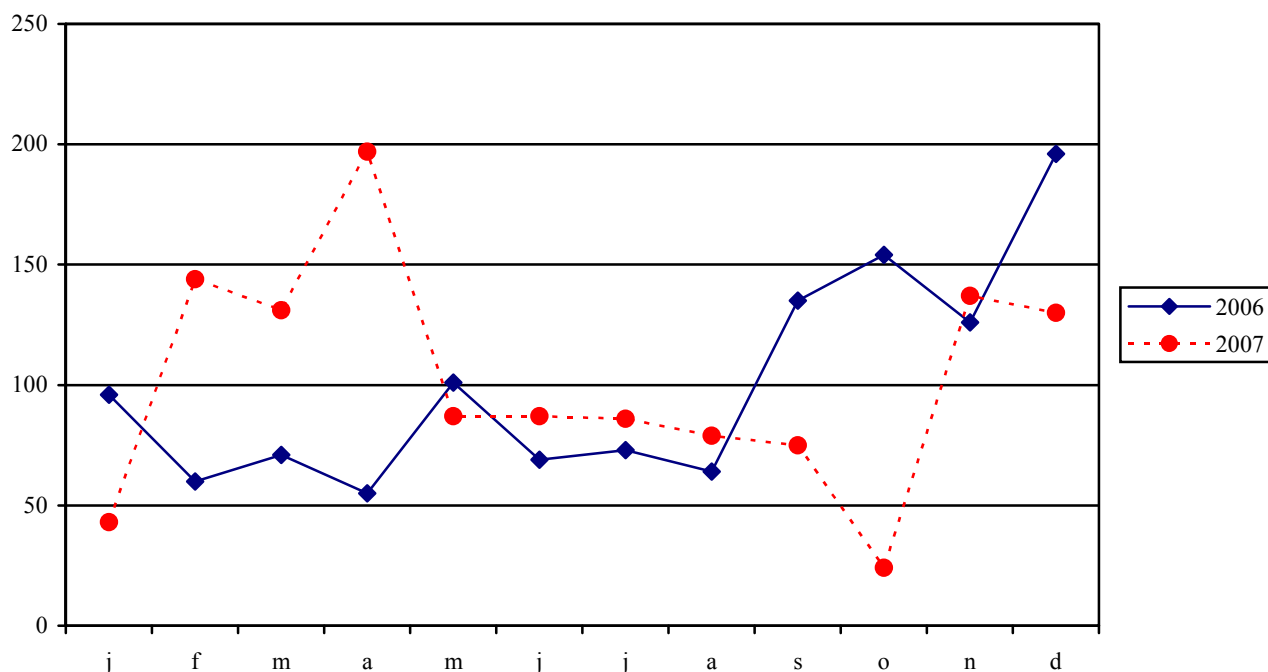
Ø 2006 = 100



	Indeks <i>Index</i>	Kiseonik, azot, acetilen, t <i>Oxygen, Nitrogen Acetylene, t</i>	Ostali gotovi ljekovi, t <i>Other medicines, t</i>	Rastvori za infuziju, t <i>Solutions for infusion, t</i>	Rudarski eksploziv, t <i>Mining explosives, t</i>	Električni upaljači i ostale kapisle hilj. kom. <i>Electric fuse and other detonators, thous. pcs.</i>	
2002	40	11041	32	752	228	665	2002
2003	31	10958	17	708	537	636	2003
2004	52	11440	12	1183	401	520	2004
2005	154	10389	16	1103	481	240	2005
2006	100	13029	17	1017	658	182	2006
2006 Ø Jan. - Decembar	100	1086	1	85	55	15	2006 Ø Jan. - December
2007 Ø Jan. - Decembar	146	1075	1	93	55	5	2007 Ø Jan. - December
2006 Novembar	142	1221	1	75	113	13	2006 November
Decembar	130	1208	2	62	61	7	December
2007 Januar	115	1082	2	98	73	34	2007 January
Februar	122	1153	2	110	78	15	February
Mart	138	1087	1	109	58	3	March
April	76	1167	1	87	32	-	April
Maj	140	1203	1	107	46	-	May
Jun	137	1163	1	69	52	6	June
Jul	105	796	-	101	52	-	July
Avgust	167	798	-	28	45	-	August
Septembar	217	1094	2	110	41	2	September
Oktobar	190	1110	2	138	68	-	October
Novembar	142	1110	2	80	53	-	November
Decembar	201	1132	2	75	67	2	December

PROIZVODNJA PROIZVODA OD GUME I PLASTIČNIH MASA
MANUFACTURE OF RUBBER AND PLASTIC PRODUCTS

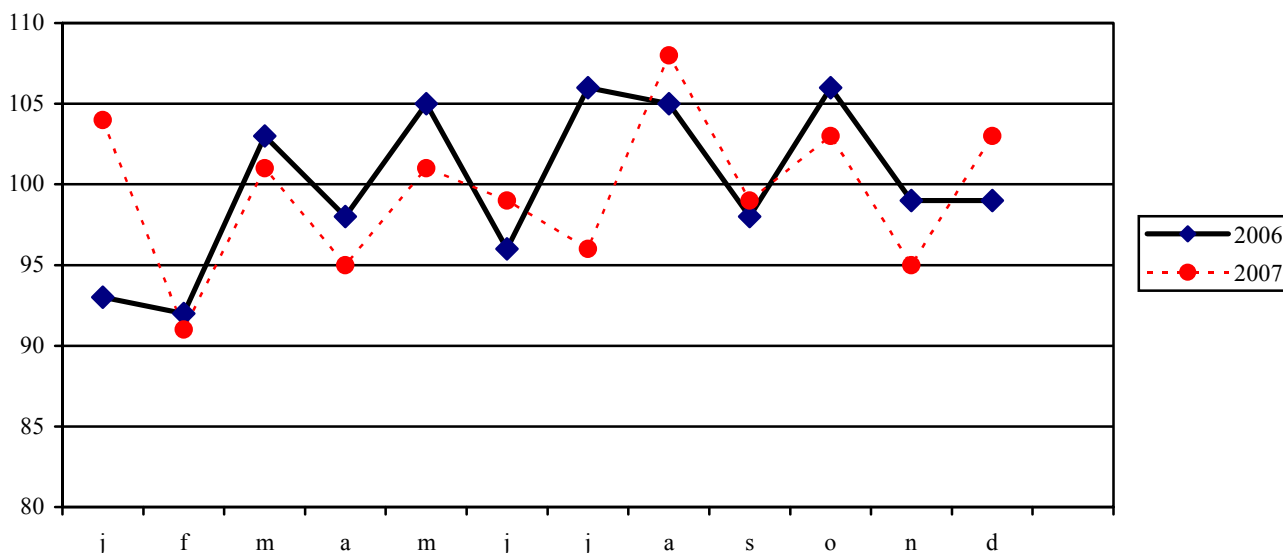
Ø 2006=100



	Indeks <i>Index</i>	Gumena tehnička roba, t <i>Rubber technical goods, t.</i>	Ambalaža od plastičnih masa, t <i>Plastic containers, t.</i>	Ostali proizvodi od plastičnih masa, t <i>Other plastic products, t.</i>	
2002	788	115	305	137	2002
2003	401	83	259	32	2003
2004	153	58	35	10	2004
2005	144	44	4	15	2005
2006	100	38	-	3	2006
2006 Ø Jan. - Decembar	100	3	-	-	2006 Ø Jan. - December
2007 Ø Jan. - Decembar	102	3	-	-	2007 Ø Jan. - December
2006 Novembar	126	4	-	-	2006 November
Decembar	196	5	-	1	December
2007 Januar	43	-	-	-	2007 January
Februar	144	5	-	1	February
Mart	131	2	-	-	March
April	197	8	-	-	April
Maj	87	3	-	-	May
Jun	87	3	-	-	June
Jul	86	3	-	-	July
Avгust	79	3	-	-	August
Septembar	75	2	-	1	September
Oktobar	24	-	-	-	October
Novembar	137	5	-	-	November
Decembar	130	5	-	-	December

PROIZVODNJA PROIZVODA OD OSTALIH NEMETALNIH MINERALA
MANUFACTURE OF OTHER MINERAL PRODUCTS

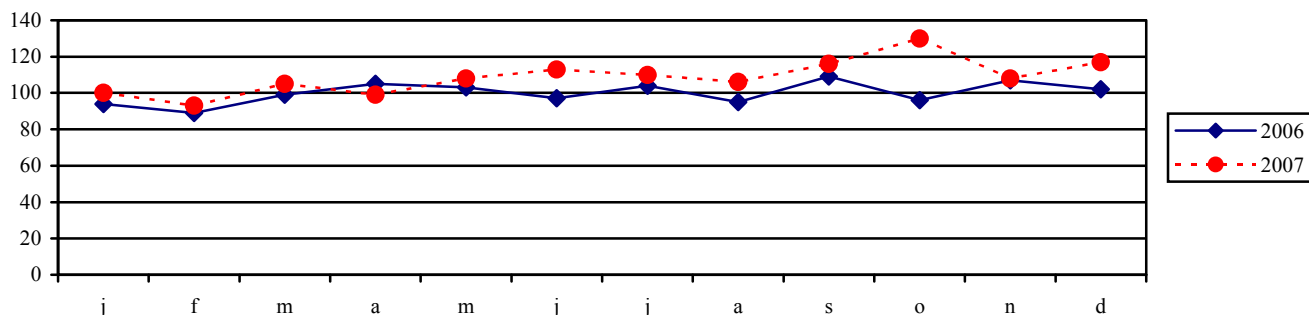
Ø 2006 = 100



	Indeks <i>Index</i>	Puna cigla 1/1 norm. formata, hilj. kom. <i>Solid bricks 1/1 normal format thous.pcs.</i>	Šuplji blokovi (vertikal. i horiz. šupljine) hilj. kom. <i>Perforated bricks (vertical and horizontal perforation) thous.pcs</i>	Monta blo- kovi hilj. kom. <i>Prefabri- cated blocks thous.pcs</i>	Negašeni kreč, t <i>Quicklime t</i>	Blokovi za zidove i pregrade hilj. kom. <i>Wall blocks and partitions thous. pcs</i>	Svježi beton, t <i>Concrete, fresh, t</i>	Rezane mermerne ploče m ² <i>Marble blocks m²</i>	Bitum. hidro- izolatori (amorf. i anodne mase), t <i>Bitumen waterproof products (amorphous and anode mixtures) t</i>	
2002	104	2771	1878	110	11123	245	3442	36349	66890	2002
2003	104	2221	1466	82	8136	1612	3079	29844	66379	2003
2004	99	1205	1210	41	10591	15	675	12321	65343	2004
2005	99	480	1089	14	6008	147	910	21404	64816	2005
2006	100	320	1019	-	8118	205	1500	43057	64579	2006
2006 Ø Jan.- Dec	100	27	85	-	677	17	125	3588	5382	2006 Ø Jan.- Dec.
2007 Ø Jan.- Dec	100	-	197	-	591	-	82	4266	5398	2007 Ø Jan.- Dec.
2006 Novembar	99	-	-	-	879	2	50	4959	5316	2006 November
Decembar	99	-	-	-	705	3	352	3838	5327	December
2007 Januar	104	-	-	-	406	-	-	3526	5773	2007 January
Februar	91	-	-	-	470	-	-	3832	5023	February
Mart	101	-	51	-	729	-	-	4039	5543	March
April	95	-	281	2	683	-	75	2448	5228	April
Maj	101	-	311	-	720	-	110	4224	5468	May
Jun	99	-	228	-	526	-	290	3850	5378	June
Jul	96	-	281	-	389	-	270	3674	5133	July
Avgust	108	-	279	-	452	-	223	4649	5643	August
Septembar	99	-	231	-	787	-	-	4423	5402	September
Oktobar	103	-	234	-	815	-	18	5621	5484	October
Novembar	95	-	254	-	634	-	-	7128	5052	November
Decembar	103	-	213	-	478	-	-	3772	5646	December

PROIZVODNJA OSNOVNIH METALA / MANUFACTURE OF BASIC METALS

Ø 2006 = 100



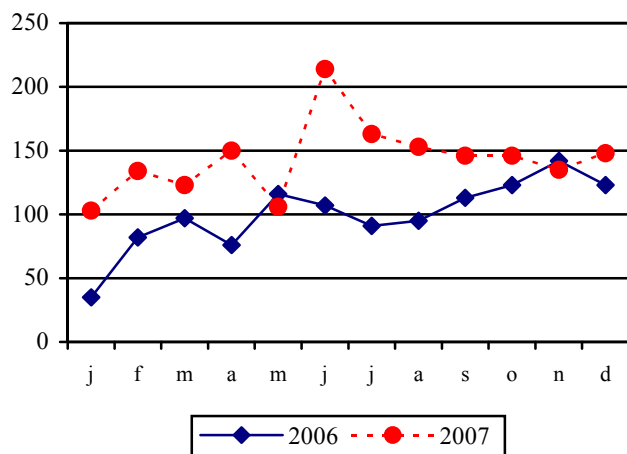
	Indeks Index	Ingoti i brame od čelika, t <i>Steel ingots, t</i>	Kontinuirano liveni odlivci od čelika iz el. peći, t <i>Continuous casting of steel from electric furnace, t</i>	Teški, srednji i laki šipkasti čelik, t <i>Heavy, light steel and light steel bars, t</i>	Vučeni, ljušteni i brušeni šipkasti čelik, t <i>Surface treated steel bars, t</i>	Hladno valjane trake, t <i>Cold-rolled wide strips, t</i>	Glinica za proizvodnju aluminijuma, t <i>Aluminium oxide for production of aluminium, t</i>	Aluminijum u ingotima, t <i>Aluminium in ingots, t</i>	
2002	90	17458	65567	74080	1710	1409	237396	108449	2002
2003	91	6438	52353	53405	630	16018	239739	111702	2003
2004	104	29809	121379	121210	1641	23179	245005	106041	2004
2005	96	28115	75452	97383	1299	11070	235196	106534	2005
2006	100	19978	143187	136921	893	7534	236740	118403	2006
2006 Ø Jan.- Dec.	100	1665	11932	11410	74	628	19728	9867	2006 Ø Jan.- Dec.
2007 Ø Jan.- Dec.	109	3185	11303	11492	34	244	20016	10338	2007 Ø Jan.- Dec.
2006 Novembar	107	1762	11798	11737	9	741	24273	10088	2006 November
Decembar	102	2151	13779	12327	53	718	19428	10440	December
2007 Januar	100	1343	8395	7744	41	320	22446	10521	2007 January
Februar	93	2480	9770	9211	-	458	19312	9521	February
Mart	105	2184	13374	13364	-	448	20457	10506	March
April	99	1469	13034	12685	49	494	16990	10508	April
Maj	108	2336	13086	9845	58	326	22871	10444	May
Jun	113	3613	9983	11976	27	396	20118	10214	June
Jul	110	3066	4138	7024	-	68	20479	10348	July
Avgust	106	1940	10006	6082	-	50	20614	10360	August
Septembar	116	5234	14028	17335	31	60	17456	10282	September
Oktobar	130	7019	14711	17627	28	75	22716	10596	October
Novembar	108	4445	12536	12236	115	75	15065	10276	November
Decembar	117	3088	12571	12777	64	158	21662	10484	December

/ nastavak /

	Indeks Index	Aluminijum u trupcima, t <i>Aluminium in blocks, t</i>	Legure alumi- nijuma, livačke, t <i>Aluminium alloys, t</i>	Valjani lim od alumi- nijuma, t <i>Rolled aluminium sheets, t</i>	Valjane trake od alumi- nijuma, t <i>Rolled aluminium strips, t</i>	Valjane alum. folije, t <i>Rolled aluminium foil, t</i>	Odlivci od sivog liva, t <i>Gray castings, t</i>	Odlivci od čelika, t <i>Steel castings, t</i>	Odlivci od aluminijuma, t <i>Aluminium castings, t</i>	
2002	90	3240	1484	269	1351	288	886	561	3190	2002
2003	91	5042	1787	88	1696	731	539	304	3535	2003
2004	104	9039	1925	147	1881	814	574	455	4246	2004
2005	96	10460	555	31	522	194	464	860	4049	2005
2006	100	3359	-	-	-	-	-	1165	4544	2006
2006 Ø Jan.- Dec.	100	280	-	-	-	-	-	97	379	2006 Ø Jan.- Dec.
2007 Ø Jan.- Dec.	109	924	-	-	-	-	-	81	400	2007 Ø Jan.- Dec.
2006 Novembar	107	-	-	-	-	-	-	124	430	2006 November
Decembar	102	-	-	-	-	-	-	127	349	December
2007 Januar	100	-	-	-	-	-	-	90	394	2007 January
Februar	93	-	-	-	-	-	-	106	416	February
Mart	105	-	-	-	-	-	-	133	379	March
April	99	-	-	-	-	-	-	100	454	April
Maj	108	414	-	-	-	-	-	57	295	May
Jun	113	1446	-	-	-	-	-	63	466	June
Jul	110	2040	-	-	-	-	-	58	337	July
Avgust	106	1561	-	-	-	-	-	73	156	August
Septembar	116	1265	-	-	-	-	-	47	547	September
Oktobar	130	1492	-	-	-	-	-	70	539	October
Novembar	108	1361	-	-	-	-	-	115	439	November
Decembar	117	1512	-	-	-	-	-	59	373	December

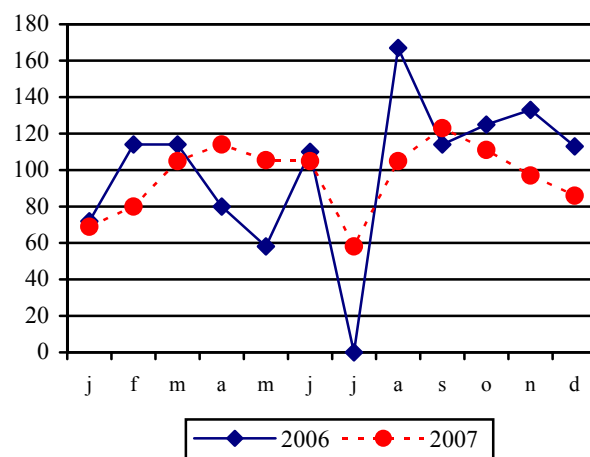
**PROIZVODNJA METALNIH
PROIZVODA OSIM MAŠINA
MANUFACTURE OF METAL
PRODUCTS EXCEPT MACHINERY**

Ø 2006 = 100



**PROIZVODNJA MAŠINA I
UREĐAJA, OSTALA
MANUFACTURE OF OTHER
MACHINERY AND EQUIPMENT**

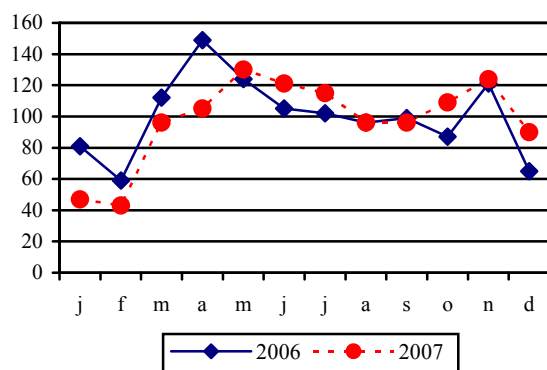
Ø 2006 = 100



	Indeks Index	Čelične hale i hangari, t Steel halls and hangers, t	Dijelovi metalnih građev. konstrukcija, t Parts of metal building constructions, t	Metalne elektrode za zavarivanje (gole i oplastene), t Metal electrodes for welding (bare and coated), t	Indeks Index	Klizni ležajevi, t Roller bearings, t	Utovarne i pretovarne dizalice, t Loading and reloading cranes, t	Dijelovi mašina i uređaja za građev., t Machinery parts and equipment for construction, t	
2002	55	35	119	1687	46	51	36	25	2002
2003	57	21	10	1156	35	148	6	4	2003
2004	79	30	44	1569	35	146	4	7	2004
2005	87	17	425	1592	44	188	20	-	2005
2006	100	-	820	1447	100	430	15	-	2006
2006 Ø Jan.- Dec.	100	-	68	121	100	36	1	-	2006 Ø Jan.- Dec.
2007 Ø Jan.- Dec.	143	-	211	149	97	35	-	-	2007 Ø Jan.- Dec.
2006 Novembar	142	-	105	97	133	48	-	-	2006 November
Decembar	123	-	130	114	113	41	-	-	December
2007 Januar	103	-	150	74	69	25	-	-	2007 January
Februar	134	-	55	161	80	29	-	-	February
Mart	123	-	45	138	105	38	-	-	March
April	150	-	226	130	114	41	-	-	April
Maj	106	-	250	25	105	38	-	-	May
Jun	214	-	450	201	105	38	-	-	June
Jul	163	-	167	195	58	21	-	-	July
Avгust	153	-	210	219	105	38	-	-	August
Septembar	146	-	160	170	123	44	-	-	September
Oktobar	146	-	280	174	111	40	-	-	October
Novembar	135	-	240	161	97	35	-	-	November
Decembar	148	-	300	141	86	31	-	-	December

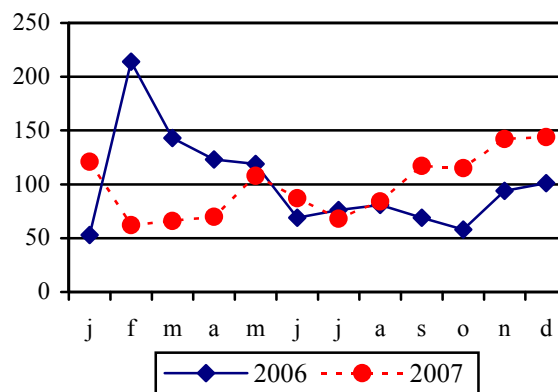
**PROIZVODNJA OSTALIH
SAOBRAĆAJNIH SREDSTAVA
MANUFACTURE OF OTHER
TRANSPORT EQUIPMENT**

Ø 2006 = 100



**PROIZVODNJA NAMJEŠTAJA
I RAZNOVRNIH PROIZVODA
MANUFACTURE OF FURNITURE
AND RELATED PRODUCTS**

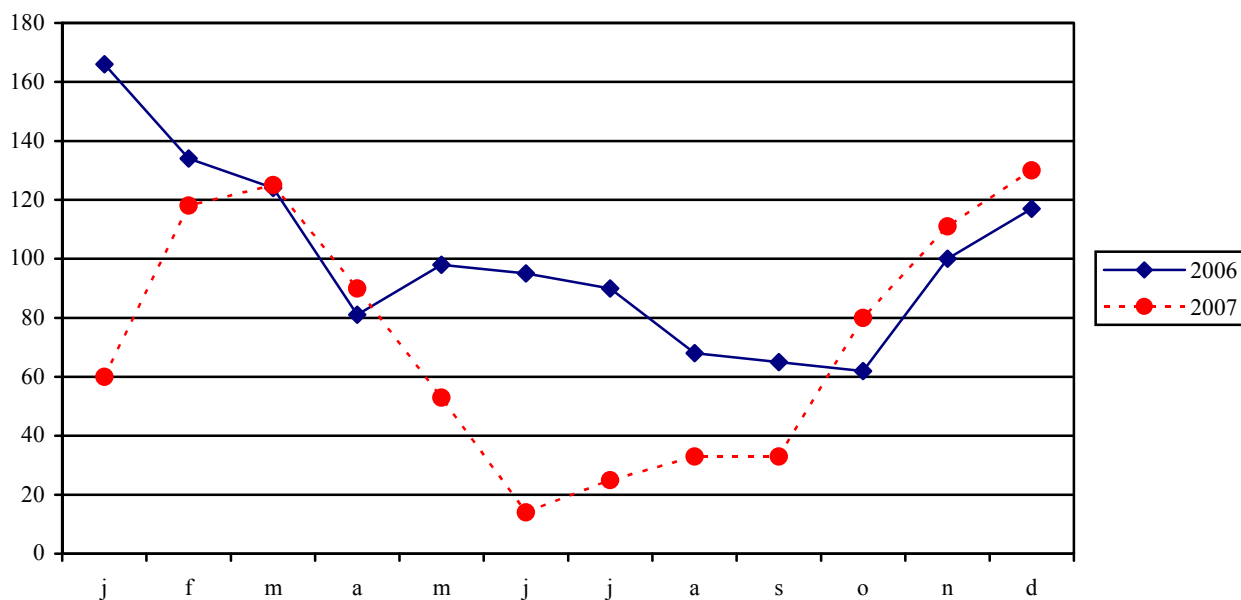
2006 = 100



	Indeks <i>Index</i>	Remont i tekuće održavanje hilj. efek. čas <i>Repairs and maintenance thous. actual hrs</i>	Indeks <i>Index</i>	Tapacirani namještaj (fotelje, kauči) kom. <i>Upholstered furni- ture (armchairs, couches), pcs.</i>	Stolovi, ormari, kreveti, vitrine, ostali ležajevi kom. <i>Tables, closets, sofas, cupboards, other beds, pcs.</i>	Ostali sitni kućni namještaj (police za knjige) kom. <i>Other small furniture (book shelves), pcs.</i>	
2002	99	387	84	214	3424	333	2002
2003	96	371	28	333	871	40	2003
2004	110	423	19	190	774	70	2004
2005	102	393	26	314	642	149	2005
2006	100	387	100	368	2300	979	2006
2006 Ø Jan. - Dec.	100	32	100	31	192	82	2006 Ø Jan. - Dec.
2007 Ø Jan. - Dec.	98	32	99	33	153	101	2007 Ø Jan. - Dec.
2006 Novembar	121	39	94	18	220	34	2006 November
Decembar	65	21	101	-	180	47	December
2007 Januar	47	15	121	130	169	106	2007 January
Februar	43	14	62	-	96	73	February
Mart	96	31	66	-	88	89	March
April	105	34	70	-	144	164	April
Maj	130	42	108	-	229	153	May
Jun	121	39	87	-	137	113	June
Jul	115	37	68	-	113	16	July
Avgust	96	31	84	-	138	86	August
Septembar	96	31	117	200	149	101	September
Oktobar	109	35	115	40	171	85	October
Novembar	124	40	142	20	204	103	November
Decembar	90	29	144	-	201	120	December

PROIZVODNJA ELEKTRIČNE ENERGIJE, GASA I VODE
ELECTRICITY, GAS AND HOT WATER SUPPLY

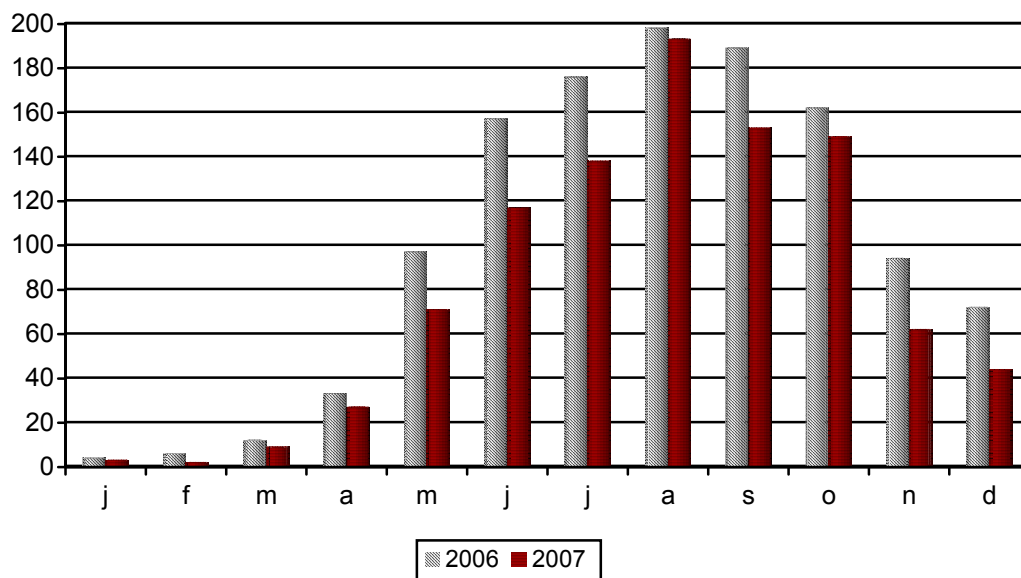
Ø 2006=100



	Indeks <i>Index</i>	Ukupno MWh <i>Total Mwh</i>	Hidro električna energija MWh <i>Hydro-energy Mwh</i>	Termo električna energija MWh <i>Thermo-energy Mwh</i>	
2002	79	2327458	1101288	1226170	2002
2003	93	2734912	1538812	1196100	2003
2004	112	3308098	2240468	1067630	2004
2005	97	2863713	1865753	997960	2005
2006	100	2951640	1749870	1201770	2006
2006 Ø Jan.- Decembar	100	245970	145822	100148	2006 Ø Jan.- Decembar
2007 Ø Jan.- Decembar	73	178667	106974	71693	2007 Ø Jan.- Decembar
2006 Novembar	100	244637	109287	135350	2006 November
Decembar	117	287392	175882	111510	December
2007 Januar	60	146920	79890	67030	2007 January
Februar	118	289668	169938	119730	February
Mart	125	307304	174554	132750	March
April	90	221745	131655	90090	April
Maj	53	131306	76316	54990	May
Jun	14	34771	34771	-	June
Jul	25	60910	60910	-	July
Avgust	33	81990	81990	-	August
Septembar	33	80851	37301	43550	September
Oktobar	80	196146	72006	124140	October
Novembar	111	272717	168747	103970	November
Decembar	130	319673	195613	124060	December

ŠUMARSTVO / FORESTRY

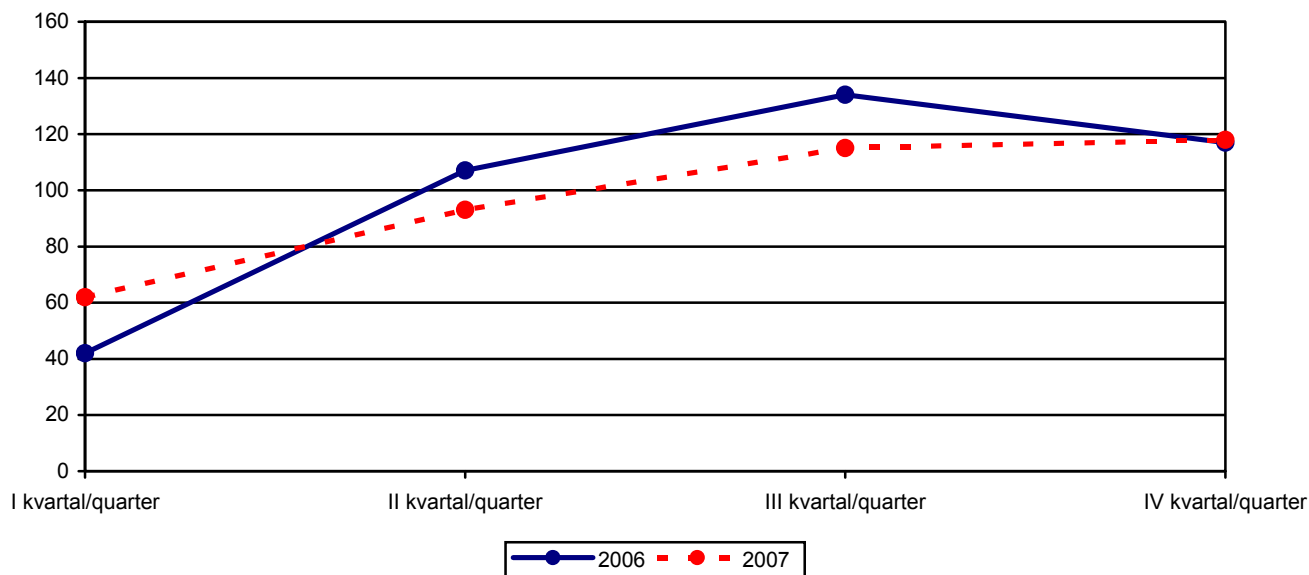
Ø 2006 = 100



	Indeks <i>Index</i>	Ukupno <i>Total</i>	Proizvedeni sortimenti, m³ / <i>Production of forests assortments</i>								
			Četinara / <i>Conifers</i>				Lišćara / <i>Deciduous trees</i>				
			trupci <i>Saw logs</i>	tehničko drvo <i>lumber</i>	prostorno drvo <i>Space wood</i>	ogrijev- no drvo <i>Fire- wood</i>	trupci <i>Saw logs</i>	tehničko drvo <i>lumber</i>	prostorno drvo <i>Space wood</i>	ogrijevno drvo <i>Firewood</i>	
2002	73	229049	155253	7477	10253	-	22140	3536	12411	17979	2002
2003	73	230604	142145	11721	11376	-	30126	3914	6465	24857	2003
2004	77	244558	151219	9516	14302	1179	32981	434	5094	29833	2004
2005	87	279228	166742	10156	11521	1949	47719	171	7460	33510	2005
2006	100	325896	194057	11808	12798	1334	46736	-	15406	43754	2006
2006 Ø Jan.- Dec.	100	27158	16172	984	1066	111	3895	-	1284	3646	2006 Ø Jan.- Dec.
2007 Ø Jan.- Dec.	81	21982	12620	740	1052	30	3750	-	1199	2591	2007 Ø Jan.- Dec.
2006 Novembar	94	26045	15460	798	1070	189	3435	-	1809	3284	2006 November
Decembar	72	21839	9728	758	1172	121	3767	-	930	5363	December
2007 Januar	3	913	543	67	256	-	-	-	17	30	2007 January
Februar	2	645	485	60	99	-	-	-	1	-	February
Mart	9	3111	1083	89	157	-	220	-	1484	78	March
April	27	7323	3949	205	412	-	1314	-	861	582	April
Maj	71	18448	11265	240	838	191	4087	-	396	1431	May
Jun	117	31708	17470	575	2063	14	6894	-	1350	3342	June
Jul	138	37567	20905	1172	1522	53	7474	-	1899	4542	July
Avgust	193	52529	29962	1900	1751	38	9442	-	2280	7156	August
Septembar	153	42327	24844	1703	2228	22	5417	-	2379	5734	September
Oktobar	149	40234	24735	1748	1685	29	5165	-	1889	4983	October
Novembar	62	16817	9601	495	857	14	2954	-	656	2240	November
Decembar	44	12165	6598	624	755	6	2033	-	1176	973	December

GRAĐEVINARSTVO / CONSTRUCTION

Ø 2006 = 100



VRIJEDNOST IZVRŠENIH I UGOVORENIH RADOVA, BROJ ZAPOSLENIH I IZVRŠENI EFEKTIVNI ČASOVI

	Indeks <i>Index</i>	Vrijednost izvršenih radova u hiljadama EUR <i>Value of finalized Construction works</i>	Prosječan broj radnika <i>Average number of employees</i>	Indeks <i>Index</i>	Izvršeni efektivni časovi u 000 <i>Finalized effective hours in thousands</i>	
2002	26	53442	2359	61	5141	2002
2003	23	46239	2074	52	4351	2003
2004	26	54051	2011	54	4514	2004
2005	36	73252	2343	63	5345	2005
2006	100	204248	3525	100	8424	2006
2006 I kvartal	42	21622	3113	85	1787	2006 I quarter
II kvartal	107	54596	3582	107	2248	II quarter
III kvartal	134	68325	3687	103	2184	III quarter
IV kvartal	117	59705	3718	105	2205	IV quarter
2007 I kvartal	62*	31581*	3189*	87*	1840*	2007 I quarter
II kvartal	93*	47505*	3474*	100*	2114*	II quarter
III kvartal	115*	58464*	3580*	101*	2122*	III quarter
IV kvartal	118	60089	3843	105	2204	IV quarter

/ nastavak/

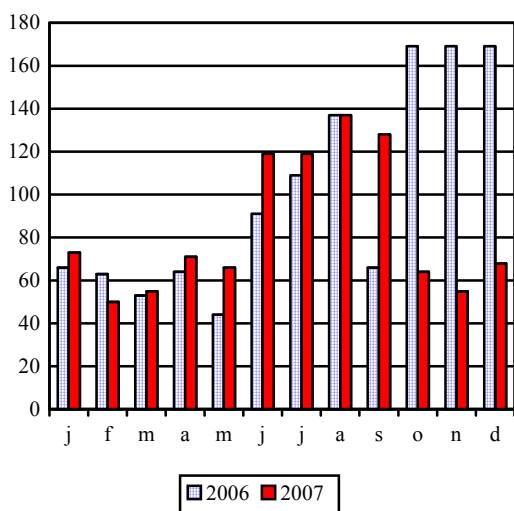
/ continued /

	Indeks <i>Index</i>	Nove narudžbe na zgradama u hilj. EUR <i>New orders on buildings, thous. €</i>	Indeks <i>Index</i>	Nove narudžbe na ostalim građevinama u hilj. EUR <i>New orders on other buildings, thous. €</i>	
2006	100	99327	100	60720	2006
2006 I kvartal	84	20989	85	12853	2006 I quarter
II kvartal	22	5350	105	16033	II quarter
III kvartal	222	55085	119	18000	III quarter
IV kvartal	72	17903	91	13834	IV quarter
2007 I kvartal	53*	13033*	116*	17596*	I quarter
II kvartal	117	29069	152	23054	II quarter
III kvartal	72	17833	79	11944	III quarter
IV kvartal	323	80071	138	20945	IV quarter

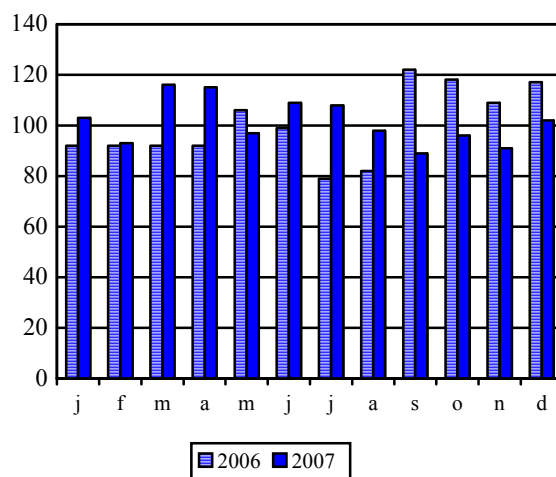
SAOBRAĆAJ, SKLADIŠTENJE I VEZE **TRANSPORT, STORAGE AND COMMUNICATIONS**

Željeznički saobraćaj / Railway transport

Putnički / Passengers



Robni / Goods

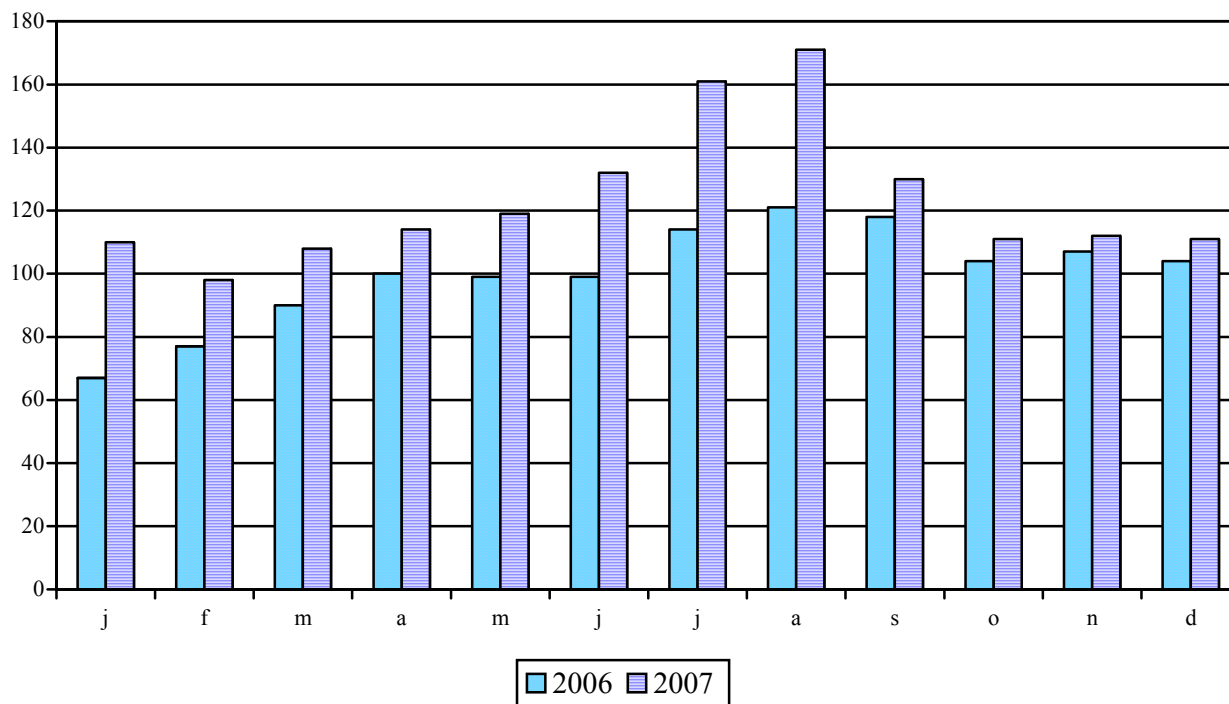


	ŽELJEZNIČKI SAOBRAĆAJ / RAILWAY TRANSPORT						
	Putnički / Passenger			Robni / Goods			
	Indeks <i>Index</i>	Putnici u 000 <i>Passengers, thous.</i>	Putnički km u 000 <i>Passenger kilometres in thous.</i>	Indeks <i>Index</i>	Prevoz robe u 000 t <i>Goods in thousands tonnes</i>	Tonski km u 000 <i>Tonne- kilometres in thous.</i>	
2002	146	1557	192128	34	856	66057	2002
2003	137	1467	191717	29	718	55167	2003
2004	100	1066	129600	40	1006	92502	2004
2005	106	1137	122920	47	1182	132782	2005
2006	100	1067	131500	100	2494	182163	2006
2006 Ø Jan.- Dec.	100	89	10958	100	208	15180	2006 Ø Jan.- Dec.
2007 Ø Jan.- Dec.	84	83	9167	101	147	15413	2007 Ø Jan.- Dec.
2006 Novembar	169	119	18533	109	140	16475	2006 November
Decembar	169	119	18534	117	146	17845	December
2007 Januar	73	84	8000	103	135	15717	2007 January
Februar	50	50	5500	93	134	14073	February
Mart	55	60	6000	116	158	17573	March
April	71	65	7800	115	159	17506	April
Maj	66	80	7200	97	151	14750	May
Jun	119	110	13000	109	142	16588	June
Jul	119	110	13000	108	152	16471	July
Avgust	137	150	15000	98	142	14827	August
Septembar	128	100	14000	89	133	13553	September
Oktobar	64	80	7000	96	150	14543	October
Novembar	55	50	6000	91	145	13800	November
Decembar	68	60	7500	102	160	15556	December

SAOBRAĆAJ, SKLADIŠTENJE I VEZE
TRANSPORT, STORAGE AND COMMUNICATIONS

Putnički saobraćaj / *Passenger transport*

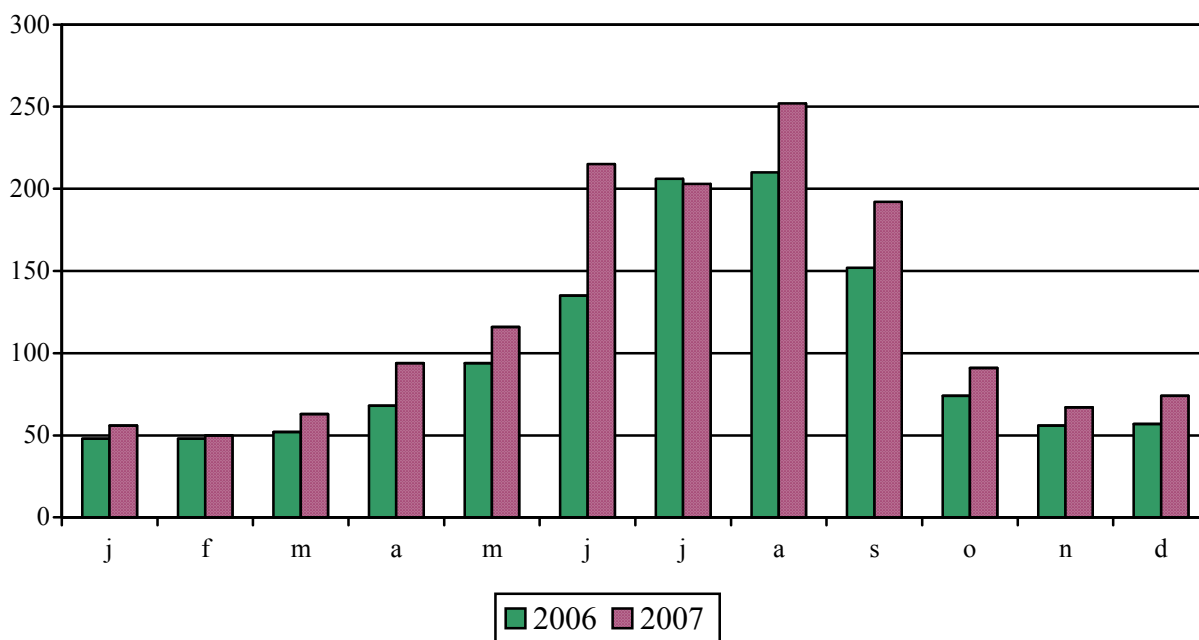
Ø 2006 = 100



	DRUMSKI SAOBRAĆAJ / ROAD TRANSPORT								
	PUTNIČKI/ PASSENGERS				ROBNI / GOODS				
	indeks <i>Index</i>	Putnici u 000 <i>Passengers, thous.</i>	Putnički km u 000 <i>Passenger kilometres in thous.</i>	Autobuski km u 000 <i>Bus kilometres in thous.</i>	indeks <i>Index</i>	roba u 000 tona <i>Goods in thousands tonnes</i>	tonski km u 000 <i>Tonne- kilometres in thous.</i>	Kamionski km u 000 <i>Truck kilometres in thous.</i>	
2002	112	5391	120862	13187	96	1889	76161	11057	2002
2003	103	4600	98911	11667	95	1871	70515	10336	2003
2004	105	4488	100620	11472	83	1639	64508	9332	2004
2005	99	4302	84883	9593	94	1857	61100	9365	2005
2006	100	4825	114695	16809	100	1961	72724	15167	2006
2006 Ø Jan.- Dec.	100	402	9558	1401	100	163	6060	1264	2006 Ø Jan.- Dec.
2007 Ø Jan.- Dec.	123	478	11771	1469	126	177	7649	1356	2007 Ø Jan.- Dec.
2006 Novembar	107	420	10315	1403	95	142	5743	1344	2006 November
Decembar	104	387	9905	1348	77	167	4688	1221	December
2007 Januar	110	379	10543	1275	104	138	6303	1068	2007 January
Februar	98	364	9380	1223	114	163	6938	1290	February
Mart	108	383	10354	1255	127	189	7699	1395	March
April	114	404	10942	1409	121	208	7336	1371	April
Maj	119	393	11371	1416	121	159	7346	1391	May
Jun	132	512	12626	1626	114	112	6907	1325	June
Jul	161	633	15391	1837	131	130	7969	1392	July
Avgust	171	647	16317	1849	132	172	7992	1357	August
Septembar	130	583	12398	1651	142	239	8597	1433	September
Oktobar	111	435	10619	1500	127	231	7720	1444	October
Novembar	112	471	10717	1351	135	181	8206	1316	November
Decembar	111	530	10589	1238	134	207	8126	1413	December

SAOBRAĆAJ, SKLADIŠTENJE I VEZE
TRANSPORT, STORAGE AND COMMUNICATIONS

Vazdušni saobraćaj / Air transport



	GRADSKI SAOBRAĆAJ <i>LOCAL TRANSPORT</i>		VAZDUŠNI SAOBRAĆAJ <i>AIR TRANSPORT</i>		ROBNI <i>GOODS</i>	
	PUTNIČKI / <i>PASSENGERS</i>					
	Indeks <i>Index</i>	Prevezeno putnika u 000 <i>Passengers in thousands</i>	Indeks <i>Index</i>	Prevoz putnika <i>Transport of passengers</i>	Prevoz robe u tonama <i>Transport of goods in tonnes</i>	
2002	369	5885	70	584882	712	2002
2003	223	3548	72	602942	618	2003
2004	168	2673	80	664801	647	2004
2005	137	2177	84	697740	1011	2005
2006	100	1591	100	833715	1067	2006
2006 Ø Jan.- Dec.	100	133	100	69532	89	2006 Ø Jan.- Dec.
2007 Ø Jan.- Dec.	93	124	123	85374	110	2007 Ø Jan.- Dec.
2006 Novembar	102	136	56	38630	56	2006 November
Decembar	134	179	57	39452	108	December
2007 Januar	43	58	56	38922	49	2007 January
Februar	126	168	50	35097	148	February
Mart	122	162	63	44065	68	March
April	122	162	94	65439	99	April
Maj	125	166	116	80689	87	May
Jun	116	155	215	150003	81	June
Jul	61	81	203	140797	78	July
Avgust	60	80	252	174921	306	August
Septembar	60	80	192	133175	76	September
Oktobar	83	111	91	63306	83	October
Novembar	103	137	67	46684	134	November
Decembar	98	131	74	51393	107	December

SAOBRAĆAJ, SKLADIŠTENJE I VEZE
TRANSPORT, STORAGE AND COMMUNICATIONS

	POMORSKI SAOBRAĆAJ MARINE TRANSPORT			PROMET U LUKAMA (U TONAMA) TURNOVER IN HARBOURS (TONNES)					
	PREVOZ ROBE TRANSPORT OF GOODS								
	Indeks Index	u 000 t In thous. tonnes	tonske milje u mil. Tonne milles in millions	Indeks Index	Ukupno Total	unutrašnji promet Internal turnover	izvoz ¹⁾ Export	uvoz ²⁾ Import	
2002	96	89	365	71	1414196	739	513759	892590	2002
2003	93	70	352	100	1993111	16926	1024440	951623	2003
2004	70	57	267	87	1735891	1786	961858	768847	2004
2005	61	60	232	103	2039211	442	1166959	851211	2005
2006	100	818	380	100	1988204	116	1027208	941905	2006
2006 Ø Jan.- Dec.	100	68	32	100	165684	10	85601	78492	2006 Ø Jan.- Dec.
2007 Ø Jan.- Dec.	106	65	34	104	172609	152	65959	106694	2007 Ø Jan.- Dec.
2006 Novembar	132	96	25	117	198705	-	78403	120302	2006 November
Decembar	111	78	21	103	175565	-	84001	91564	December
2007 Januar	63	77	20	58	96251	-	82184	14067	2007 January
Februar	75	79	24	107	177913	-	66836	111077	February
Mart	72	91	23	124	205082	-	87826	116977	March
April	56	61	18	98	161627	-	64863	96764	April
Maj	75	63	24	104	172053	-	45339	121344	May
Jun	88	71	28	149	247638	-	94671	152967	June
Jul	325	68	104	93	153509	1825	55650	96034	July
Avgust	181	46	58	99	163661	-	62213	101448	August
Septembar	125	76	40	126	209013	-	51356	157657	September
Oktobar	81	67	26	109	180663	-	70233	118430	October
Novembar	75	39	24	86	142246	-	47616	94630	November
Decembar	63	45	20	98	161654	-	62722	98932	December

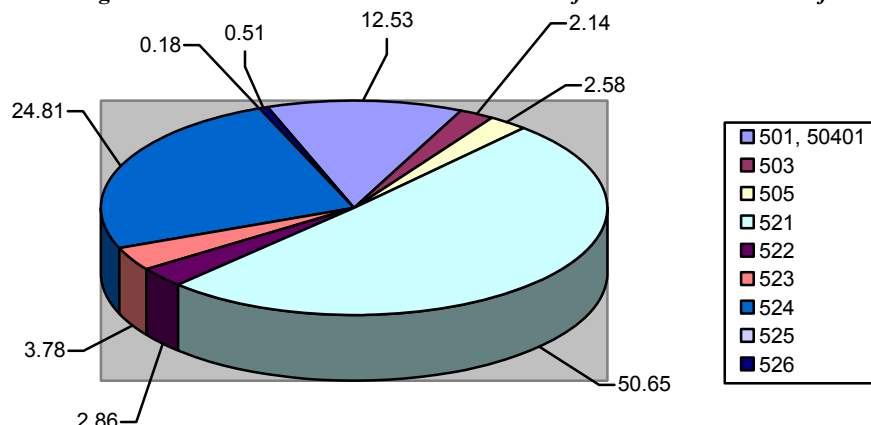
¹⁾ Tranzit utovar prikazan kod izvoza. / Transit loading presented on export. ²⁾ Tranzit istovar prikazan kod uvoza. / Transit loading presented on import.

	P T T SAOBRAĆAJ / POSTAL, TELEGRAPH AND TELEPHONE (PTT) COMMUNICATIONS						
	POŠTANSKE USLUGE POSTAL SERVICES			TELEGRAFSKE USLUGE TELEGRAPH SERVICES	TELEFONSKE USLUGE TELEPHONE SERVICES		
	pisma u 000 komada <i>Lletters in thousands pcs.</i>	paketi u 000 komada <i>Packages in thousands pcs.</i>	uputnice u 000 komada <i>Postal orders in thousands pcs.</i>	telegr. u 000 komada <i>Ttelegraphs in thousands pcs.</i>	fiksna telefonija <i>Fixed telephony</i>	mobilna telefonija <i>Mobile telephony</i>	
					minuti u 000 <i>Minutes in thousands</i>	minuti u 000 <i>Minutes in thousands</i>	
2002	15703	160	64	554	...	-	2002
2003	14926	65	64	541	...	-	2003
2004	12994	52	57	539	...	-	2004
2005	16185	56	65	572	876231	-	2005
2006	17396	30	45	581	862596	488802	2006
2006 Ø Jan.- Dec.	1450	2	4	48	-	40733	2006 Ø Jan.- Dec.
2007 Ø Jan.- Dec.	1524	2	4	49	72039	55014	2007 Ø Jan.- Dec.
2006 Novembar	1275	2	4	42	437130	41528	2006 November
Decembar	1674	2	4	47	419307	44580	December
2007 * Januar	1196	2	3	49	72061	35920	2007 January
Februar	1227	2	5	53	69015	32735	February
Mart	1343	2	4	56	74572	56856	March
April	1241	2	3	47	69021	46225	April
Maj	1245	2	4	43	66791	55114	May
Jun	1642	2	4	48	69936	56608	June
Jul	1925	3	4	47	90574	61557	July
Avgust	1694	1	4	48	113067	58679	August
Septembar	1603	1	3	47	75383	50087	September
Oktobar	1590	2	3	50	53973	59897	October
Novembar	1604	2	3	51	54717	74333	November
Decembar	1982	2	4	50	55361	72157	December

* Podaci za 2005, 2006. i 2007. godinu telefonske usluge – fiksna telefonija su prikazani u minutima.
 Data on telephone services – fixed telephony for 2005, 2006 and 2007 are given in minutes.

UNUTRAŠNJA TRGOVINA / INTERNAL TRADE

Struktura prometa u trgovini na malo za decembar 2007. / Structure of turnover in retail trade for December 2007



	PROMET U TRGOVINI NA MALO / TURNOVER IN RETAIL TRADE						
	PROMET u EUR <i>TURNOVER in EUR</i>		Mjesec 2007. na prethodni mj. 2007 <i>Month in 2007 compared to the previous month 2007</i>		Mjesec 2007. na isti mjesec 2006. <i>Month in 2007 compared to the same month 2006</i>		
	2006	2007	Indeks prometa u tekućim cijenama <i>Index of turnover at current prices</i>	Indeks prometa u stalnim cijenama <i>Index of turnover at constant prices</i>	Indeks prometa u tekućim cijenama <i>Index of turnover at current prices</i>	Indeks prometa u stalnim cijenama <i>Index of turnover at constant prices</i>	
Januar	28537824	36819573	129	126	<i>January</i>
Februar	29746960	38522402	105	104	130	126	<i>February</i>
Mart	35667288	49845703	129	129	140	136	<i>March</i>
April	41277807	57335195	115	114	139	135	<i>April</i>
Maj	43631565	60642355	106	105	139	135	<i>May</i>
Jun	45385663	66079761	109	109	146	141	<i>June</i>
Jul	56580285	81363989	123	123	144	140	<i>July</i>
Avgust	61102001	82827591	102	102	136	131	<i>August</i>
Septembar	50569070	69960560	84	84	138	134	<i>September</i>
Oktobar	48539141	74565206	107	106	154	149	<i>October</i>
Novembar	45605970	67804491	91	91	149	144	<i>November</i>
Decembar	57684940	80423285	119	119	139	134	<i>December</i>

Struktura prometa u trgovini na malo za Decembar / Structure of turnover in retail trade for December

Djelatnost	Struktura Structure 2006. god.	Struktura Structure 2007. god.	
501, 50401, – prod.motor.vozila, motocik.njihovih dijelova i pribora	12.69	12.53	501, 50401, – sale of motor vehicles, motorcycles and their sparts and accessories
503 – prodaja dijelova i pribora za motorna vozila	2.13	2.14	503 – spare parts and accessories for motor vehicles
505 – trgovina na malo motornim gorivima	2.14	2.58	505 – retail trade of motor fuels
521 – trgovina na malo u nespecijalizovanim prodavnicama	53.38	50.65	521 – retail trade in unspecialized shops
522 – trgovina hranom, pićem i duvanom u specijaliz.prodavnicama	3.18	2.86	522 – trade of food, beverages and tobacco in specialized shops
523 – trgovina farmaceutskim, medicin, kozmet.i toalet.prepar.	4.24	3.78	523 – trade of Pharmaceutical, Medical, cosmetic and toalet preparations
524 – trgovina na malo neprehrambenim proizvodima	21.59	24.81	524 – retail trade of non-food products
525 – trgovina na malo polovnom robom	0.11	0.15	525 –retail trade of used goods
526 – trgovina u prod. koje poštom dostavljaju naručenu robu	0.54	0.51	526 – trade in shops that deliver ordered goods by post
Od 2007 podaci za trgovinu se objavljuju na osnovu novog okvira za uzorak			Data on trade are since 2007 published nased on the new sample frame.

UGOSTITELJSTVO / CATERING

	indeks ¹⁾ <i>Index</i>	Promet u hilj. EUR <i>Turnover in thousand s EUR</i>	
2002	47	59999	2002
2003	47	60485	2003
2004	46	59383	2004
2005	51	65552	2005
2006	100	128720	2006
2006 Ø Jan.- Dec.	100	10727	2006 Ø Jan.- Dec.
2007 Ø Jan.- Dec	105	11251	2007 Ø Jan.- Dec
2006 Novembar	49	2661	2006 November
Decembar	62	3386	December
2007			2007
Januar	24	2547	January
Februar	23	2520	February
Mart	26	2798	March
April	47	5078	April
Maj	108	11552	May
Jun	119	12726	June
Jul	232	24903	July
Avgust	312	33478	August
Septembar	225	24106	September
Oktobar	45	4810	October
Novembar	50	5410	November
Decembar	47	5086	December

Indeks prometa po tekućim cijenama. / *Index of turnover at current prices.*

U promet ugostiteljstva uključen je i privatni sektor od 2006.godine. / *Since 2006, turnover of catering also includes private sector.*

PRODAJA I OTKUP PROIZVODA POLJOPRIVREDE, ŠUMARSTVA I RIBARSTVA
SALE AND BUYING OUT OF PRODUCTS FROM AGRICULTURE, FORESTRY AND FISHERY

U hiljadama EUR/ In thousands EUR

	Indeks <i>Index</i> Ø 2006 =100	Ukupno <i>Total</i>	Poljoprivreda i šumarstvo / <i>Agriculture and forestry</i>					
			žita <i>Cereals</i>	industrijsko bilje <i>Industrial crops</i>	povrće ¹⁾ <i>Vegetables</i>	voće <i>Fruit</i>	grožđe <i>Vine</i>	
2002	84	13027	-	567	294	1319	2830	2002
2003	83	12729	4	1303	751	1307	2432	2003
2004	82	12641	13	809	245	1429	1392	2004
2005	102	15689	2	1032	146	1128	1480	2005
2006	100	15422	11	-	142	1127	1208	2006
2006 Ø Jan.- Dec.	100	1285	1	-	12	94	101	2006 Ø Jan.- Dec.
2007 Ø Jan.- Dec.	107	1377	-	69	24	83	148	2007 Ø Jan.- Dec.
2006 Novembar	99	1277	-	-	7	1	-	2006 November
Decembar	117	1498	-	-	8	-	-	December
2007 Januar	106	1357	-	587	30	-	-	2007 January
Februar	51	653	-	-	-	-	-	February
Mart	65	832	-	-	17	-	-	March
April	65	832	-	-	4	-	-	April
Maj	67	864	-	-	1	-	-	May
Jun	105	1347	-	-	41	450	-	June
Jul	199	2562	-	-	107	257	1256	July
Avgust	177	2277	-	-	1	259	522	August
Septembar	105	1353	-	-	18	1	-	September
Oktobar	114	1462	-	-	21	22	-	October
Novembar	103	1319	-	-	22	9	-	November
Decembar	130	1665	-	244	22	2	-	December
/ nastavak /								
/ continued /								
	Poljoprivreda i šumarstvo / <i>Agriculture and forestry</i>						Ribarstvo <i>Fishery</i>	
	preradevine voća i grožđa <i>Products of fruit and vine</i>	Stoka <i>Livestock</i>	živina i jaja <i>Poultry and eggs</i>	mlijeko i mliječni proizvodi <i>Milk and milk products</i>	koža i vuna <i>Leather and wool</i>	ostali proizvodi <i>Other products</i>	riba svježa <i>Fresh fish</i>	
2002	71	543	231	4927	270	1550	425	2002
2003	223	319	1190	3724	37	1096	343	2003
2004	76	2723	1192	3767	10	638	347	2004
2005	67	4762	814	4762	8	1173	315	2005
2006	100	5437	732	5379	-	969	317	2006
2006 Ø Jan.- Dec.	8	453	61	448	-	81	26	2006 Ø Jan.- Dec.
2007 Ø Jan.- Dec.	14	493	67	387	-	67	25	2007 Ø Jan.- Dec.
2006 Novembar	-	741	62	443	-	-	23	2006 November
Decembar	17	967	62	408	-	-	36	December
2007 Januar	-	255	53	414	-	-	18	2007 January
Februar	-	268	51	321	-	-	13	February
Mart	1	283	71	336	-	100	24	March
April	1	302	56	376	-	60	33	April
Maj	36	317	54	411	-	25	20	May
Jun	13	342	66	415	-	2	18	June
Jul	44	367	83	428	-	-	20	July
Avgust	-	388	88	388	-	600	31	August
Septembar	-	823	93	366	-	15	37	September
Oktobar	44	866	92	385	-	7	25	October
Novembar	-	816	50	395	-	-	27	November
Decembar	32	885	43	405	-	1	31	December

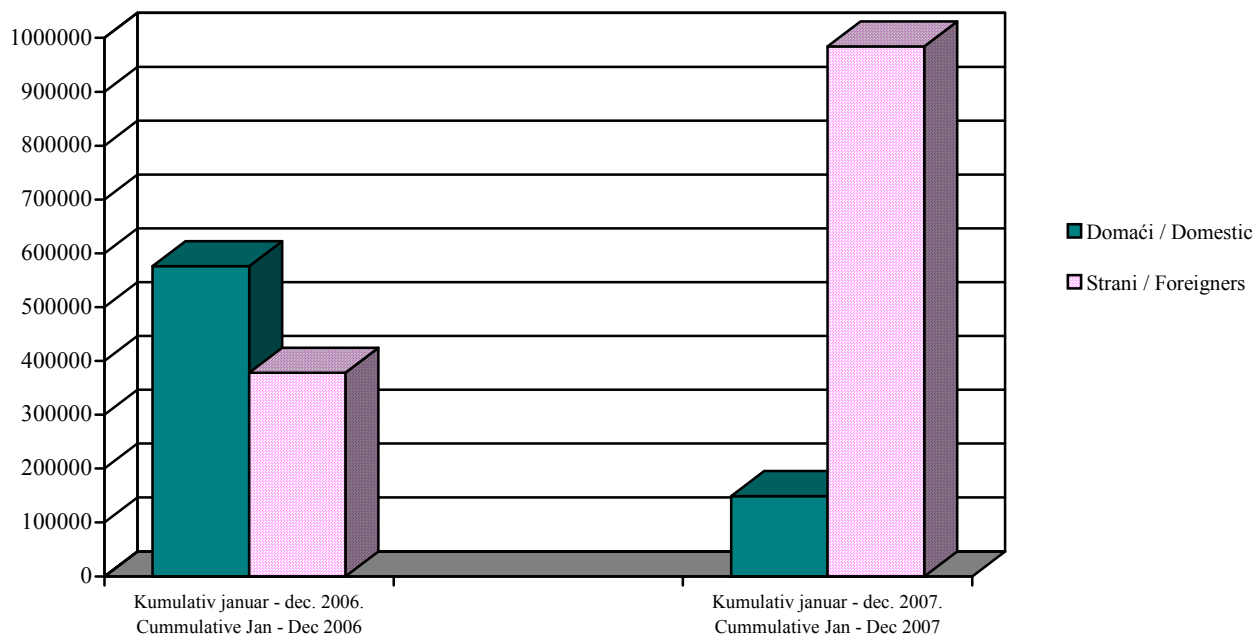
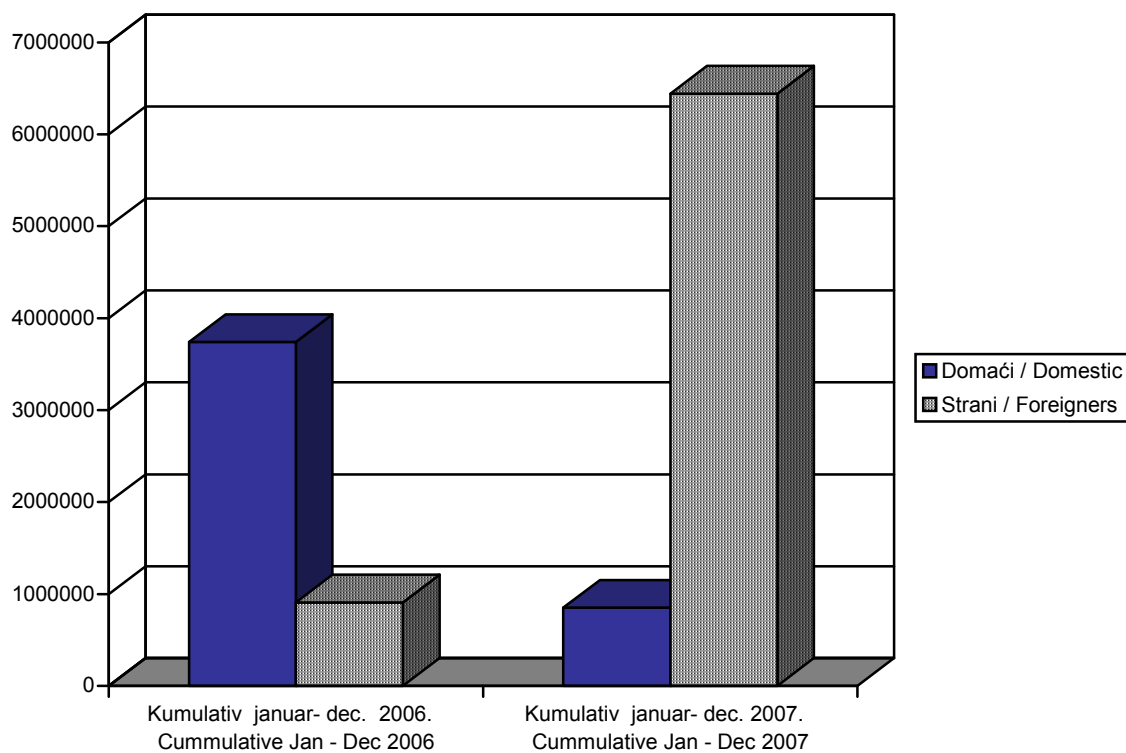
¹⁾ Uključeni i krompir i pasulj.¹⁾ includes potatoes and beans.

TURIZAM / TURISM

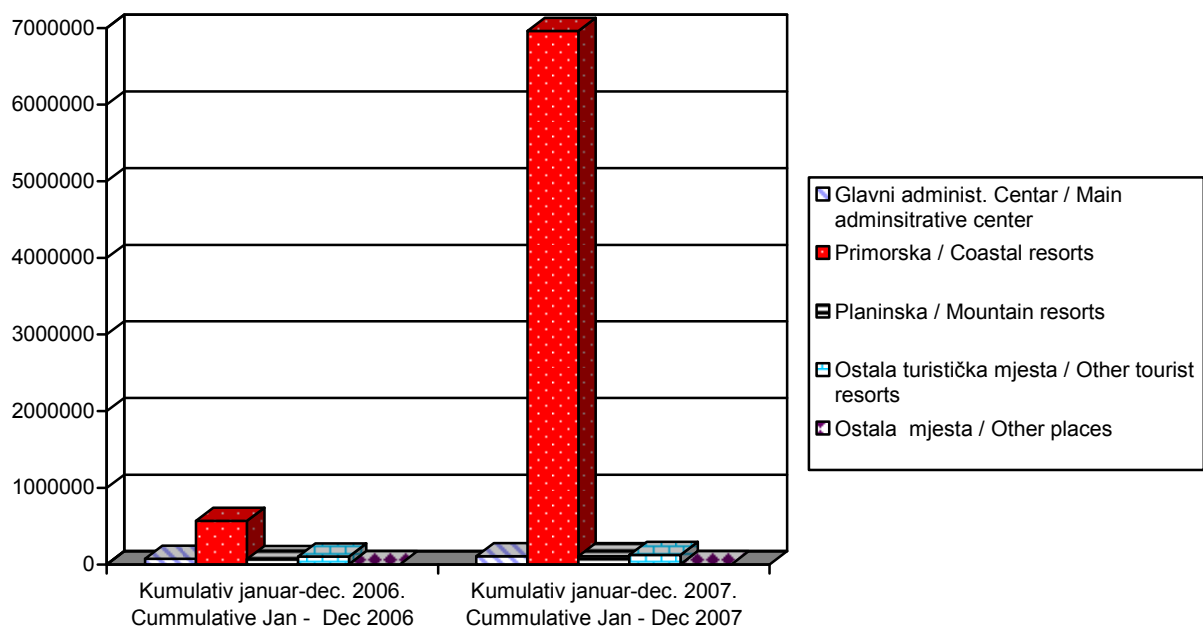
	2005	2006	Kumulativ Januar – Decembar <i>Cummulative January - December</i>		2007			
			2006	2007	Septembar	Oktobar	Novembar	Decembar
					<i>September</i>	<i>October</i>	<i>November</i>	<i>December</i>
Dolasci turista / Tourist arrivals								
Ukupno / Total	820457	953928	953928	1133432	132981	33303	15617	17836
Domaći ¹⁾ / Domestic	548452	576130	576130	149294	15165	6218	3845	5803
Strani / Foreigners	272005	377798	377798	984138	117816	27085	11772	12033
Noćenja turista – ukupno	5211847	5936270	5936270	7294530	883084	142336	56880	59185
Tourist overnight stays – total								
Noćenja domaćih turista ¹⁾	3628337	3740179	3740179	851045	90630	29227	11511	14684
Overnight stays of domestic tourists								
Noćenja stranih turista	1583510	2196091	909607	6443485	792454	113109	45375	44501
Overnight stays of foreigners								
Albanija / Albania	40091	99621	2830572	188572	17460	2505	2666	3393
Austrija / Austria	12505	18536	2196091	97273	5857	1158	397	184
Belgija / Belgium	6953	39196	99621	44139	8907	1702	85	68
Bosna i Hercegovina	267875	336618	18536	703472	87520	7635	6501	7032
Bosnia and Herzegovina								
Bugarska / Bulgaria	4173	6735	39196	18912	4373	530	186	224
Češka Republika / Czech Republic	206418	222169	336618	266598	41053	589	337	32
Danska / Denmark	2874	5006	6735	6964	728	1016	178	88
Finska / Finland	6093	14698	3263	18259	2166	305	95	4
Francuska / France	64354	103828	5006	181384	30967	4527	380	373
Grčka / Greece	2302	3263	64477	5993	518	924	226	210
Holandija / Netherlands	20701	25661	46565	41826	7066	2679	103	221
Hrvatska / Croatia	30278	48810	142538	44717	5172	2643	1314	919
Italija / Italy	49210	64477	46395	205937	27215	2477	2225	2244
Mađarska / Hungary	36437	46565	34608	200675	30319	803	399	314
Makedonija / Macedonia	88905	74531	74531	156371	19268	7739	5464	4124
Norveška / Norway	45011	46395	8005	53121	7993	4170	222	96
Njemačka / Germany	133903	142538	45502	116807	21833	7739	700	604
Poljska / Poland	17633	34608	89212	73332	8307	409	179	231
Rumunija / Romania	4599	8005	76325	8236	1160	516	29	56
Rusija / Russia	253178	455502	79008	789497	141071	14959	4160	4857
Slovačka / Slovakia	63918	89212	14698	83939	6935	114	18	7
Slovenija / Slovenia	57697	76325	103828	90023	11280	3338	804	917
Srbija ¹⁾ / Serbia	-	-	25661	2644312	233873	19102	11839	12807
Švajcarska / Switzerland	8511	9680	48810	26193	4265	439	82	285
Švedska / Sweden	31236	23211	222169	48247	9169	619	244	95
Ukrajina / Ukraine	-	-	9680	65944	13426	791	206	638
Velika Britanija / Great Britain	48582	79008	23211	90543	15503	12629	3655	2653
Ostale evropske zemlje	41854	71329	71329	109128	21503	5960	1068	647
Other European countries								
Izrael / Israel	8588	9906	17679	8823	1487	392	193	93
Kanada / Canada	3592	5570	5570	5894	429	394	81	60
SAD / USA	9882	17679	2589	22005	2891	2670	756	356
Ostale vanevropske zemlje	16157	17409	24726	26349	2740	1636	583	669
Other non-European countries								
Noćenja po vrstama mjesta – ukupno	5211847	5936270	5936270	7294530	883084	142336	56886	59185
Overnight stays by type of tourist resorts – total								
Glavni administrativni centar	53886	74169	74169	104986	8129	8397	8208	7685
Main administrative center								
Primorska / Coastal	5022260	5691770	5691770	6961444	856865	122459	40884	41304
Planinska / Mountain	53577	68424	68424	105892	8357	4262	2863	4956
Ostala turistička mjesta	82003	101677	101677	121871	9689	7202	4922	5220
Other tourist resorts								
Ostala mjesta / Other places	121	230	230	337	44	16	9	20
Primorska mjesta / Coastal resorts								
Bar	746407	721774	721774	923729	89435	13032	11964	13565
Budva	2048852	2319339	2319339	2990529	463008	65745	13718	15080
Kotor	306378	347023	347023	378656	52939	2327	1052	1990
Tivat	280655	209301	209301	264369	26970	6018	2372	1688
Ulcinj	462991	588280	588280	712798	35218	3391	823	278
Herceg Novi	1176977	1506053	1506053	1691363	189295	31946	10955	8703

U 2005. i 2006. godini Srbija ulazi u domaće dolaskе i noćenja, a u 2007. godini svrstana je u strane zemlje.

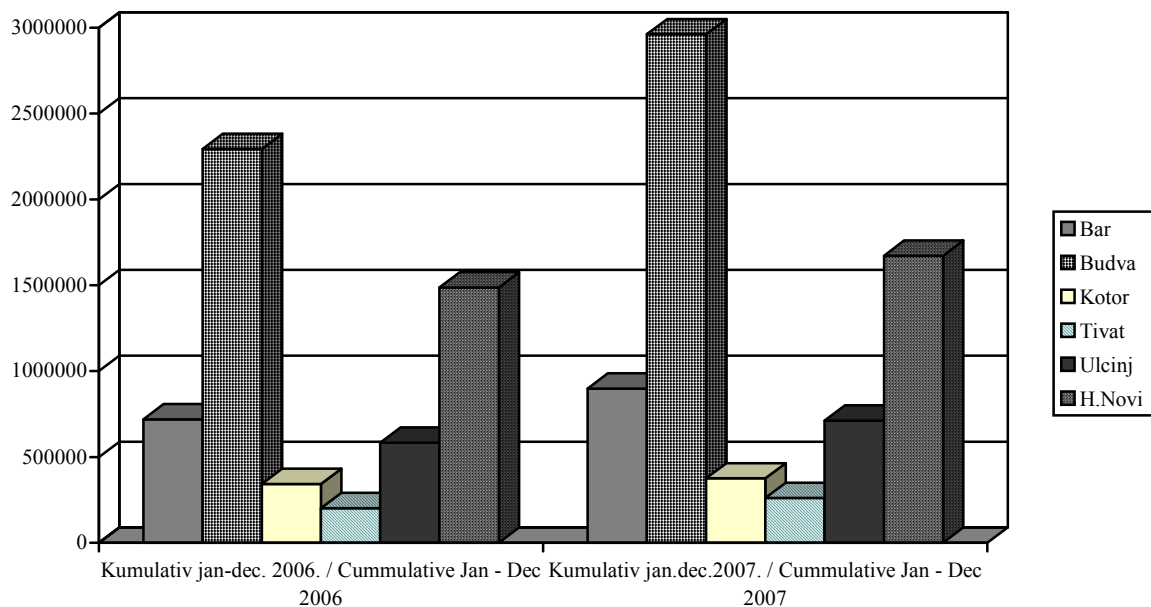
In 2005 and 2006, Serbia were counted in domestic arrivals and overnight stays, and since 2007 it is considered as a foreign country.

Dolasci domaćih i stranih turista / Arrivals of domestic tourist and foreigners**Noćenja domaćih i stranih turista / Overnight stays of domestic tourist and foreigners**

Noćenja po vrstama mjesta / Overnight stays by type of tourist resorts



Noćenja u primorskim mjestima / Overnight stays in coastal resorts



INDEKSI CIJENA PROIZVOĐAČA INDUSTRIJSKIH PROIZVODA
PRODUCERS PRICE INDICES FOR INDUSTRIAL PRODUCTS

	2006 2005	XII 2007 XII 2006	Ø 2006 = 100						
			2007						
			JUN <i>June</i>	JUL <i>July</i>	AVG. <i>August</i>	SEPT. <i>September</i>	OKT. <i>October</i>	NOV. <i>November</i>	DEC <i>December</i>
Ukupno / Total	103.6	114.5	106.4	111.5	111.0	111.3	111.6	114.8	115.0
Vađenje ruda i kamena / Mining and quarrying	105.4	111.1	110.7	111.1	109.4	109.4	110.3	108.4	109.0
Prerađivačka industrija / Manufacturing	104.1	107.3	108.2	107.7	107.2	107.6	108.0	108.0	108.3
Proizvodnja el. energije, gasa i vode <i>Electricity, gas and water supply</i>	100.0	135.6	100.0	122.1	122.1	122.1	122.1	135.6	135.6
Vađenje ruda i kamena <i>Mining and quarrying</i>	105.4	111.1	110.7	111.1	109.4	109.4	110.3	108.4	109.0
Vađenje energetskih sirovina <i>Mining and quarrying of energy-producing materials</i>	106.3	112.5	112.5	112.5	112.5	112.5	112.5	112.5	112.5
Vađenje kamenog uglja, lignita i treseta <i>Mining and quarrying of energy-producing materials</i>	106.3	112.5	112.5	112.5	112.5	112.5	112.5	112.5	112.5
Vađenje ostalih sirovina i materijala <i>Mining and quarrying except energy producing materials</i>	104.4	110.0	109.4	110.0	107.0	107.0	108.7	105.3	106.2
Vađenje ruda metala <i>Mining of metal ores</i>	104.5	110.7	110.4	110.4	106.7	106.7	107.7	104.8	105.9
Vađenje ostalih ruda i kamena <i>Other mining and quarrying</i>	104.2	106.7	104.4	108.0	108.9	108.9	113.3	107.4	107.4
Prerađivačka industrija / Manufacturing	104.1	107.3	108.2	107.7	107.2	107.6	108.0	108.0	108.3
Prehrambeni proizvodi, pića i duvan <i>Food products, beverages and tobacco</i>	101.9	107.0	102.3	103.4	104.3	105.4	106.9	107.1	108.6
Proizv. prehrambenih proizvoda i pića <i>Manufacture of food products and beverages</i>	103.7	108.2	103.1	104.3	105.4	106.7	108.4	108.1	110.5
Proizvodnja duvanskih proizvoda <i>Manufacture of tobacco products</i>	82.5	100.0	98.0	98.0	98.0	98.0	98.0	98.0	98.0
Proizvodnja tekstila i tekstilnih proizvoda <i>Manufacture of textile and textile products</i>	126.6	107.9	101.0	101.0	101.4	108.9	112.4	112.4	110.5
Proizvodnja tekstilnih prediva i tkanina <i>Manufacture of textile fabrics</i>	103.2	102.5	100.2	100.2	100.2	100.2	102.9	102.9	102.9
Proizvodnja odjevnih predmeta i krzna <i>Manufacture of wearing apparel and fur</i>	141.3	117.5	102.4	102.4	103.7	125.4	130.6	130.6	124.9
Proizvodnja kože i predmeta od kože <i>Manufacture of leather and leather products</i>	100.0	100.0	100.0	100.0	100.0	100.0	100.0	100.0	100.0
Proizvodnja predmeta od kože i obuće <i>Manufac. of leather products and footwear</i>	100.0	100.0	100.0	100.0	100.0	100.0	100.0	100.0	100.0
Prerada drveta i proizvoda od drveta <i>Manufacture of wood and wood products</i>	109.6	102.0	102.4	102.4	100.7	100.7	102.4	102.4	102.4
Proizvodi od drveta, plute i slično <i>Manufacture of wood and cork products, and similar</i>	109.6	102.0	102.4	102.4	100.7	100.7	102.4	102.4	102.4

INDEKSI CIJENA PROIZVOĐAČA INDUSTRIJSKIH PROIZVODA
PRODUCERS PRICE INDICES FOR INDUSTRIAL PRODUCTS

/ naastavak /

/ continued /

	2006 2005	XII 2007 XII 2006	Ø 2006 = 100						
			2007						
			JUN <i>June</i>	JUL <i>July</i>	AVG. <i>August</i>	SEPT. <i>September</i>	OKT. <i>October</i>	NOV. <i>November</i>	DEC <i>December</i>
Proizvodnja papira, izdavanje i štampanje <i>Manufacture of paper; printing and publishing</i>	91.5	100.3	100.0	100.0	100.0	100.3	100.3	100.3	100.3
Proizv. celuloze, papira i proizv. od papira <i>Manufacture of pulp, paper and paper prod.</i>	91.5	100.9	99.9	99.9	99.9	100.9	100.9	100.9	100.9
Izdavanje, štampanje i reprodukcija <i>Printing, publishing and reproduction</i>	-	100.0	100.0	100.0	100.0	100.0	100.0	100.0	100.0
Prerada hemijskih proizvoda i vlakana <i>Manufacture of chemical products and fibres</i>	88.1	122.3	118.9	118.9	120.0	120.0	120.0	126.1	126.1
Proizvodnja hemikalija i hem. proizvoda <i>Manuf. of chemicals and chemical products</i>	88.1	122.3	118.9	118.9	120.0	120.0	120.0	126.1	126.1
Proizvodnja proizv. od gume i plastike <i>Manufacture of rubber and plastic products</i>	-	103.2	103.7	104.0	104.0	103.8	103.8	103.8	103.8
Proizvodnja proizv. od gume i plastike <i>Manufac. of rubber and plastic products</i>	-	103.2	103.7	104.0	104.0	103.8	103.8	103.8	103.8
Proizv. proizvoda od ost. nemetalnih min. <i>Manuf. of other non-metallic mineral products</i>	101.3	106.5	106.5	109.4	110.1	109.4	109.4	109.4	110.1
Proizv. proizvoda od ost. nemetalnih min. <i>Manuf. of other non-metallic mineral products</i>	101.3	106.5	106.5	109.4	110.1	109.4	109.4	109.4	110.1
Proizv. osn. metala i metalnih proizvoda <i>Manufacture of basic metals and standard metal products</i>	101.9	107.8	111.4	110.3	109.3	109.3	109.1	109.0	109.0
Proizvodnja osnovnih metala <i>Manufacture of basic metals</i>	101.9	108.2	111.9	110.8	109.7	109.7	109.6	109.4	109.4
Proizvodnja metalnih proizv., osim mašina <i>Manufacture of metal products, except machines</i>	-	100.0	100.0	100.0	100.0	100.0	100.0	100.0	100.0
Proizvodnja mašina i uređaja, ostala <i>Manufacture of other machinery and equipment</i>	112.0	96.7	96.7	96.7	96.7	96.7	96.7	96.7	96.7
Proizvodnja mašina i uređaja, ostala <i>Manuf. of other machinery and equipment</i>	112.0	96.7	96.7	96.7	96.7	96.7	96.7	96.7	96.7
Prerađivačka industrija, ostala <i>Manufacturing, other</i>	91.3	108.2	103.6	103.7	103.7	103.7	103.7	103.7	103.7
Proizv. namještaja i raznovrsnih proizvoda <i>Manufacture of furniture and miscellaneous products</i>	91.3	108.2	103.6	103.7	103.7	103.7	103.7	103.7	103.7
Proizvodnja el. energije, gasa i vode <i>Electricity, gas and water supply</i>	100.0	135.6	100.0	122.1	122.1	122.1	122.1	135.6	135.6
Proizv. Električne energije, gasa i vode <i>Electricity, gas and water supply</i>	100.0	135.6	100.0	122.1	122.1	122.1	122.1	135.6	135.6
Proizv. el. energije, gasa i vode <i>Electricity, gas and water supply</i>	100.0	135.6	100.0	122.1	122.1	122.1	122.1	135.6	135.6
Izabrane grupe proizvoda <i>Chosen groups of products</i>									
Elementi i materijal za ugrad. u građev. <i>Elements and material for use in construction</i>	108.9	104.8	106.4	106.9	107.1	107.0	106.8	106.2	106.3

INDEKS CIJENA NA MALO / RETAIL PRICES INDEX

Ø 2006 = 100

	Indeks cijena na malo / <i>Retail prices index</i>						
	opšti indeks cijena na malo <i>General retail prices index</i>		poljoprivrednih proizvoda <i>Of agricultural products</i>		industrijskih proizvoda <i>Of industrial products</i>		
	sa sezonskim proizvodima <i>With seasonal products</i>	bez sezonskih proizvoda <i>Without seasonal products</i>	sa sezonskim proizvodima <i>With seasonal products</i>	bez sezonskih proizvoda <i>Without seasonal products</i>	ukupno <i>Total</i>	bez prehrambenih proizvoda <i>Without non- food products</i>	
2003	91.6	91.7	94.8	94.5	94.3	94.3	2003
2004	94.7	94.7	90.0	90.5	97.0	97.4	2004
2005	97.9	97.9	92.0	93.4	98.1	98.4	2005
2006	100.0	100.0	100.0	100.0	100.0	100.0	2006
2007 ¹⁾	104,2	104,2	109,0	108,4	104,0	104.5	2007 ¹⁾
2006 Ø Jan.- Dec.	100.0	100.0	100.0	100.0	100.0	100.0	2006 Ø Jan.- Dec.
2007 Ø Jan.- Dec.	104.2	104.2	109.0	108.4	104.0	104.5	2007 Ø Jan.- Dec.
2006 Novembar	100,3	100.5	100.8	100.5	100.3	99.8	2006 November
Decembar	100.8	100.8	102.9	103.5	100.4	99.8	December
2007 Januar	101.0	100.9	106.1	104.4	100.7	99.9	2007 January
Februar	101.1	100.9	107.8	106.0	100.6	99.5	February
Mart	101.4	101.3	108.0	106.2	101.0	100.2	March
April	102.1	102.0	109.9	108.5	101.8	101.4	April
Maj	102.4	102.1	112.9	105.9	102.0	101.8	May
Jun	102.6	102.5	108.0	105.6	102.4	102.5	June
Jul	104.9	105.0	106.5	108.1	105.4	107.4	July
Avgust	105.0	104.9	111.5	110.9	105.2	107.0	August
Septembar	107.0	106.8	117.4	114.4	105.8	107.5	September
Oktobar	107.6	107.4	117.5	114.5	106.6	107.5	October
Novembar	108.7	108.4	117.8	113.9	108.0	109.6	November
Decembar	108.8	108.6	119.7	115.6	108.1	109.7	December
	Indeks cijena na malo prehrambenih proiz.			Piće <i>Beverages</i>	Robe <i>Goods</i>	Usluge <i>Services</i>	
	<i>Retail prices index of food products</i>						
	prehrambeni proizvodi <i>Food products</i>		industrijsko prehrambeni <i>Industrial – food products</i>				
sa sezonskim <i>With seasonal</i>	bez sezonskih <i>Without seasonal</i>						
2003	94.7	94.8	94.7	90.4	94.2	80.9	2003
2004	96.0	96.7	97.1	91.7	96.5	87.5	2004
2005	96.8	97.0	97.7	98.2	97.8	98.5	2005
2006	100.0	100.0	100.0	100.0	100.0	100.0	2006
2007 ¹⁾	104,5	104.3	103.7	100.9	104,2	104,3	2007 ¹⁾
2006 Ø Jan.- Dec.	101.6	101.4	101.3	100.2	100.5	101.1	2006 Ø Jan.- Dec.
2007 Ø Jan.- Dec.	102.1	101.9	101.6	100.4	100.7	101.1	2007 Ø Jan.- Dec.
2006 Novembar	100,0	100,0	100,0	100,0	100,0	100,0	2006 November
Decembar	104,5	104,3	103,7	100,9	104,2	104,3	December
2007 Januar	102.8	102.5	102.2	100.5	101.0	101.2	2007 January
Februar	103.2	102.8	102.4	100.8	101.0	101.5	February
Mart	103.4	103.0	102.6	100.6	101.4	101.5	March
April	103.8	103.5	102.7	100.5	102.2	101.5	April
Maj	104.2	103.1	102.7	100.5	102.6	101.5	May
Jun	103.5	103.0	102.7	101.1	102.8	101.9	June
Jul	103.3	103.4	102.7	101.2	105.5	102.7	July
Avgust	104.1	103.8	102.8	101.2	105.5	102.7	August
Septembar	105.8	105.1	103.8	101.1	106.4	109.2	September
Oktobar	107.8	107.2	106.1	100.9	107.2	109.2	October
Novembar	108.2	107.5	106.5	101.1	108.5	109.2	November
Decembar	108.7	107.9	106.8	101.5	108.8	109.2	December

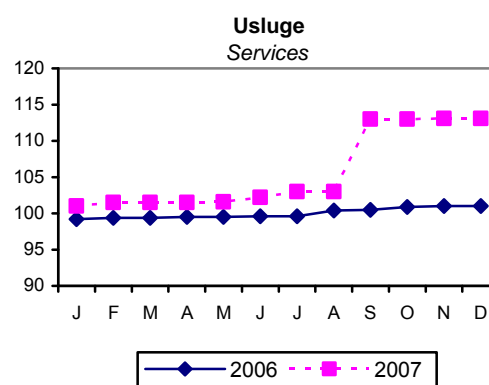
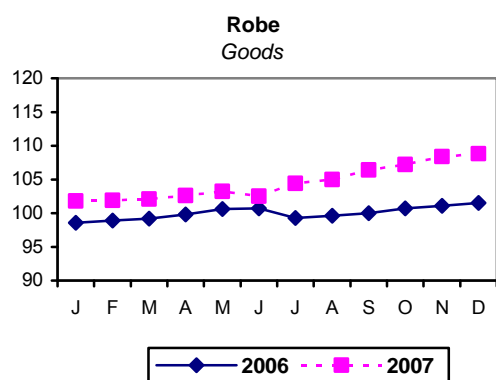
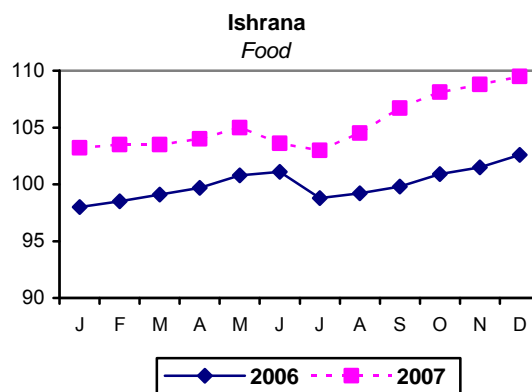
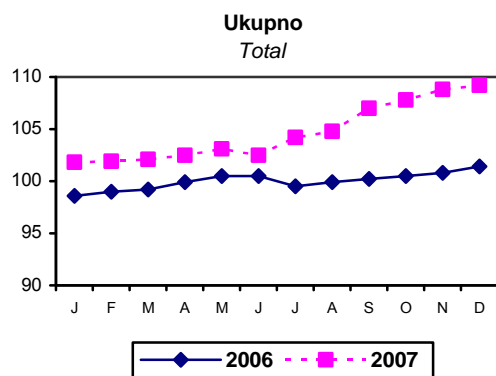
¹⁾ Januar – Decembar 2007 : Januar – Decembar 2006.¹⁾ January – December 2007 : January – December 2006

INDEKS CIJENA NA MALO PO GRUPAMA PROIZVODA
RETAIL PRICE INDEX BY GROUPS OF PRODUCTS

Ø 2006 = 100

	2007							
	MAJ <i>May</i>	JUN <i>June</i>	JUL <i>July</i>	AVG. <i>August</i>	SEPT. <i>Sept.</i>	OKT. <i>Oct.</i>	NOV. <i>Nov</i>	DEC. <i>Dec.</i>
Proizvodi od žitarica / <i>Cereal products</i>	101.8	101.8	101.8	101.8	101.7	102.1	102.5	102.5
Povrće svježe – ukupno / <i>Vegetables, fresh - total</i>	121.6	101.1	96.8	111.5	124.4	126.7	130.6	133.0
Povrće stalno / <i>Vegetables, continual</i>	101.1	95.8	103.3	111.8	121.7	120.0	118.0	121.3
Voće svježe – ukupno / <i>Fruit, fresh - total</i>	110.1	115.5	115.8	114.6	118.0	116.4	112.9	114.4
Voće stalno / <i>Fruit, continual</i>	108.9	113.4	114.2	113.8	115.1	116.2	114.8	115.1
Prerađevine od povrća / <i>Vegetables, processed / canned</i>	101.4	101.6	101.6	101.6	101.5	102.7	103.1	103.3
Prerađevine od voća / <i>Fruit, processed / canned</i>	100.2	100.3	100.2	100.3	100.3	100.6	100.6	100.5
Svježe meso / <i>Meat, fresh</i>	103.6	103.9	104.3	104.3	104.3	104.3	104.5	104.6
Prerađevine od mesa / <i>Meat products</i>	102.2	102.2	102.2	102.2	102.5	104.4	104.6	104.7
Svježa riba / <i>Fresh fish</i>	99.7	99.7	99.9	99.9	99.9	99.9	108.1	108.1
Prerađevine od riba / <i>Fish, processed / canned</i>	102.8	102.8	102.8	102.8	102.8	104.1	104.1	104.1
Kokošja jaja / <i>Chickens' eggs</i>	108.0	105.2	105.2	107.8	108.6	108.8	108.8	111.9
Mliječni proizvodi / <i>Dairy products</i>	100.5	100.5	100.6	100.6	102.1	107.8	108.7	109.2
Masnoće / <i>Fats</i>	102.5	102.5	102.5	102.5	113.2	127.5	128.2	129.2
Ostali proizvodi / <i>Other products</i>	107.4	106.6	106.6	106.6	106.5	106.7	106.9	107.3
Alkoholna pića / <i>Beverages</i>	102.0	103.0	103.0	103.0	103.3	103.4	103.6	104.3
Duvan / <i>Tobacco</i>	100.8	100.8	100.8	100.8	100.8	100.8	100.8	100.8
Vunene tkanine / <i>Woollen fabrics</i>	101.3	101.4	101.4	101.4	101.4	101.4	101.4	101.4
Pamučne tkanine / <i>Cotton fabrics</i>	101.7	101.7	101.7	101.7	101.7	102.3	102.5	102.5
Svilene tkanine / <i>Silk fabrics</i>	100.1	100.1	100.1	100.1	100.1	100.1	100.1	100.1
Konfekcija odjeće / <i>Ready-made clothing</i>	102.6	102.6	102.6	102.6	103.1	103.3	103.4	103.4
Konfekcija rublja / <i>Ready-made underwear</i>	102.4	102.4	102.4	102.4	102.4	102.4	102.4	102.4
Obuća / <i>Footwear</i>	101.4	101.4	101.4	101.4	101.4	101.5	101.5	101.9
Namještaj / <i>Furniture</i>	100.7	100.7	100.7	100.7	100.7	100.7	100.7	100.7
Elek. aparati za domaćinstvo / <i>Electrical household appliances</i>	100.0	99.9	99.9	99.9	99.9	99.9	99.7	99.7
Poljoprivredni alat i sprave / <i>Agricultural tools and equipment</i>	100.3	106.7	106.7	106.7	106.7	106.7	106.7	110.3
Tečna goriva i maziva / <i>Liquid fuels and lubricants</i>	99.5	101.2	102.2	99.6	101.1	101.1	107.2	107.2
Građevinski materijal / <i>Building materials</i>	112.0	115.8	115.8	115.8	116.1	116.1	116.1	116.1
Ogrijev i osvjetljenje / <i>Electricity and fuel</i>	100.1	100.1	129.2	129.2	129.2	129.2	136.5	136.5
Školski pribor / <i>School outfit</i>	100.1	100.1	100.1	100.1	100.2	100.2	100.2	100.2
Higijenske potrebe / <i>Hygiene / toiletries</i>	100.4	100.4	100.4	100.4	100.5	100.7	100.7	100.7
Komunal. – stambene usluge / <i>Public utilities</i>	104.2	105.1	110.5	110.5	110.5	110.5	110.5	110.5
Zanatske usluge / <i>Craft services</i>	103.2	103.3	103.3	103.3	103.3	103.3	103.6	103.6
Kulturne usluge / <i>Cultural services</i>	100.2	100.3	100.3	100.8	100.8	100.8	100.8	100.8
Saobraćajne i PTT usluge / <i>Transport services</i>	100.0	100.4	100.4	100.4	112.7	112.9	112.9	112.9

INDEKS TROŠKOVA ŽIVOTA / COSTS OF LIVING INDEX



	Ukupno <i>Total</i>	Po namjeni potrošnje / <i>By consumption purpose</i>										
		ishrana <i>Food</i>	duvan i piće <i>Tobacco and beverages</i>	odjeća i obuća <i>Clothes and footwear</i>	Stan <i>Yent</i>	ogrijev i osvjetljenje <i>Electricity and fuel</i>	pokućstvo <i>Household furnishings</i>	higijena i zdravlje <i>Hygiene and health care</i>	kultura i razonoda <i>Culture and entertainment</i>	saobraćaj i PTT <i>Transport and communications</i>	Robe <i>Goods</i>	Usluge <i>Services</i>
2003	93.1	95.0	93.8	91.5	90.0	94.9	97.8	96.6	93.1	68.9	94.4	75.6
2004	94.9	96.0	94.3	96.8	96.2	99.2	99.1	98.8	98.2	93.1	96.1	84.1
2005	97.1	95.7	98.6	99.0	99.3	99.3	99.4	99.6	98.8	96.2	96.7	98.5
2006	100.0	100.0	100.0	100.0	100.0	100.0	100.0	100.0	100.0	100.0	100.0	100.0
2007 ¹⁾	103.9	104.3	100.6	102.0	104.0	112.8	101.3	101.1	102.5	102.8	103.8	105.1
2006 Ø I.- XII.	100.0	100.0	100.0	100.0	100.0	100.0	100.0	100.0	100.0	100.0	100.0	100.0
2007 Ø I.- XII	104.2	104.4	100.6	101.9	104.0	114.4	101.3	101.1	102.5	103.8	104.0	105.6
2006 XI	100.8	101.5	100.1	101.1	101.9	100.6	100.8	100.5	101.5	97.9	101.1	101.0
2006 XII	101.4	102.6	100.4	101.1	101.9	100.6	100.8	100.6	101.5	97.9	101.5	101.0
2007 I	101.8	103.2	100.4	101.1	101.9	100.6	100.8	100.6	101.5	97.9	101.8	101.0
2007 II	101.9	103.5	100.5	101.5	102.1	100.6	101.0	101.0	101.5	96.5	101.9	101.5
2007 III	102.1	103.5	100.4	101.7	102.1	100.6	101.0	101.0	101.5	98.3	102.1	101.5
2007 IV	102.5	104.0	100.4	102.0	102.1	100.6	101.2	101.0	101.5	100.1	102.6	101.5
2007 V	103.1	105.0	100.5	102.0	102.3	100.6	101.2	101.0	101.5	100.6	103.2	101.6
2007 VI	102.5	103.6	100.7	102.0	102.7	100.7	101.3	101.0	101.6	101.9	102.5	102.2
2007 VII	104.2	103.0	100.7	102.0	105.7	126.1	101.3	101.0	101.6	102.2	104.4	103.0
2007 VIII	104.8	104.5	100.7	102.0	105.7	126.1	101.3	101.0	101.7	100.8	105.0	103.0
2007 IX	107.0	106.7	100.7	102.1	105.7	126.1	101.5	101.1	104.3	110.7	106.4	113.0
2007 X	107.8	108.1	100.5	102.2	105.7	126.1	101.6	101.3	104.4	110.7	107.2	113.0
2007 XI	108.8	108.8	100.6	102.4	105.9	132.4	101.6	101.3	104.3	113.1	108.4	113.1
2007 XII	109.2	109.5	100.9	102.4	105.9	132.4	101.6	101.3	104.3	113.1	108.8	113.1

¹⁾ Januar – Decembar 2007 : Januar – Decembar 2006.¹⁾ January – December 2007 : January – December 2006.

PRIRODNO KRETANJE STANOVNIŠTVA
NATURAL POPULATION CHANGES

Crna Gora / Montenegro

	Živorodeni <i>Live births</i>	Umrli <i>Deaths</i>	Vitalni indeks <i>Vital index</i>	Prirodni priraštaj <i>Natural increase</i>	Brakovi / <i>Marriages</i>	
					sklopljeni <i>New marriages</i>	razvedeni <i>Divorces</i>
2003	8344	5704	1.46	2640	4050	494
2004	7849	5707	1.38	2142	3440	505
2005	7352	5839	1.26	1513	3291	499
2006	7531	5968	1.26	1563	3462	470
2006 XI	606	430	1.41	176	307	29
XII	578	486	1.19	92	270	60
2007 ¹⁾ I	469	421	1.11	48	295	14
II	538	513	1.05	25	248	18
III	546	515	1.06	31	240	57
IV	535	496	1.08	39	353	40
V	684	514	1.33	170	309	22
VI	723	477	1.52	246	282	52
VII	705	487	1.45	218	350	46
VIII	880	496	1.77	384	380	49
IX	669	435	1.54	234	442	56
X	740	544	1.36	196	402	28
XI	666	486	1.37	180	433	14
XII	636	465	1.37	171	528	64
I – XII. 2007	7791	5849	1.33	1942	4262	460
Ø I – XII. 2007	649	487	1.33	162	355	38
Ø I – XII. 2006 /	628	497	1.26	130	289	39
Indeks nivoa ²⁾ / <i>Index of levels</i>	103	98	-	124	123	98
<u>Ø I – XII 2007</u> <u>Ø 2006</u>	103	98	-	124	123	98

¹⁾ Prethodni podaci / *Preliminary data*

²⁾ Ø I – XII 2007 : Ø I – XII 2006

PRIRODNO KRETANJE STANOVNIŠTVA PO OPŠTINAMA
NATURAL POPULATION CHANGES BY MUNICIPALITY
I - XII 2007 god.¹⁾

	Živorodeni <i>Live births</i>			Umrli <i>Deaths</i>			Vitalni indeks <i>Vital index</i>	Prirodni priraštaj <i>Natural increase</i>	Brakovi	
	ukupno <i>Total</i>	muški <i>Male</i>	ženski <i>Female</i>	ukupno <i>Total</i>	muški <i>Male</i>	ženski <i>Female</i>			sklopljeni <i>New marriages</i>	razvedeni <i>Divorces</i>
CRNA GORA MONTENEGRO	7791	4116	3675	5849	2994	2855	1.33	1942	4262	461
ANDRIJEVICA	39	18	21	61	32	29	0.64	-22	10	1
BAR	490	259	231	418	222	196	1.17	72	294	21
BERANE	545	292	253	369	184	185	1.48	176	183	32
BIJELO POLJE	637	324	313	459	231	228	1.39	178	348	13
BUDVA	252	135	117	109	63	46	2.31	143	132	21
DANILOVGRAD	172	87	85	163	74	89	1.06	9	72	14
ŽABLJAK	40	22	18	41	14	27	0.98	-1	11	2
KOLAŠIN	68	31	37	128	69	59	0.53	-60	46	1
KOTOR	269	152	117	262	134	128	1.03	7	135	32
MOJKOVAC	65	38	27	122	59	63	0.53	-57	42	-
NIKŠIĆ	831	438	393	730	380	350	1.14	101	538	45
PLAV	155	88	67	133	68	65	1.17	22	112	1
PLUŽINE	30	14	16	37	19	18	0.81	-7	16	-
PLJEVLJA	271	139	132	373	187	186	0.73	-102	161	17
PODGORICA	2610	1400	1210	1463	776	687	1.78	1147	1397	147
ROŽAJE	421	219	202	129	66	63	3.26	292	223	52
TIVAT	178	86	92	127	58	69	1.40	51	76	14
ULCINJ	242	131	111	157	82	75	1.54	85	150	8
HERCEG NOVI	346	173	173	305	156	149	1.13	41	184	38
CETINJE	116	60	56	233	106	127	0.50	-117	119	2
ŠAVNIK	14	10	4	30	14	16	0.47	-16	13	-

¹⁾ Prethodni podaci¹⁾ Preliminary data

ZAPOSLENI PO SEKTORIMA DJELATNOSTI
EMPLOYEES BY ACTIVITY SECTORS

	Ukupno <i>Total</i>	PO SEKTORIMA / <i>BY ACTIVITY SECTORS</i>						
		poljoprivreda šumarstvo i vodoprivreda <i>Agriculture, forestry and water supply</i>	ribarstvo <i>Fishing</i>	vadenje ruda i kamena <i>Mining and quarrying</i>	prerađivačka industrija <i>Manufacturing</i>	proizvodnja elekt. energije <i>Electricity supply</i>	građevinarstvo <i>Construction</i>	trgovina na veliko i malo, opravka <i>Wholesale and retail trade, repair</i>
Ø 2005	144340	2786	98	4079	25971	5496	7563	23789
Ø 2006	150800	2607	115	4159	26065	5627	6853	29602
2006								
XI	155156	2642	118	4221	26452	5693	7238	32116
XII	150746	2562	106	3860	25769	5407	5445	29672
2007								
I	151535	2555	109	3837	25851	5411	5498	30065
II	152114	2565	109	3839	25855	5434	5677	30314
III	153140	2609	109	3785	25980	5440	5857	30530
IV	154074	2609	109	3785	26071	5446	6019	30657
V	156817	2589	109	3767	26185	5470	6478	31228
VI	158190	2594	109	3762	25983	5479	6713	31570
VII	160045	2599	109	3761	26093	5482	6976	31801
VIII	158392	2620	117	3725	25764	5788	7037	30439
IX	158164	2620	117	3719	25778	5794	7140	30554
X	157458	2619	117	3686	25748	5780	7236	30356
XI	157739	2526	117	3686	24446	5787	7472	30731
XII	159223	2527	117	3686	24608	5819	7662	30750

/nastavak/

/ continued /

	PO SEKTORIMA / <i>BY ACTIVITY SECTORS</i>							
	hoteli i restorani <i>Hotels and restaurants</i>	saobraćaj, skladištenje i veze <i>Transport, storage and communi- cations</i>	financijsko posredovnje <i>Financial activities</i>	aktivnosti u vezi s nekretninama <i>Real estate activities, renting</i>	državna uprava i obav. socijalno osiguranje <i>Public administration and social insurance</i>	obrazovanje <i>Education</i>	zdravstveno i socijalno osiguranje <i>Health and social work</i>	ostale komunalne, društ. i lične usluge <i>Other community, social & pers. service activities</i>
Ø 2005	11110	13745	3014	5067	9524	12974	11200	7924
Ø 2006	10928	12133	3114	5905	10345	12846	12012	8489
2006								
XI	11018	12732	3279	6333	9766	12986	12170	8392
XII	9405	10910	2979	5100	17305	12633	11967	7626
2007								
I	9439	10993	3022	5209	17328	12602	11957	7659
II	9505	11021	3029	5217	17313	12627	11960	7652
III	9888	11122	3043	5224	17326	12637	11931	7659
IV	10291	11196	3050	5236	17341	12653	11931	7680
V	11344	11316	3068	5354	17398	12696	11966	7849
VI	11944	11492	3108	5406	17443	12663	12001	7923
VII	12923	11603	3124	5462	17465	12666	12007	7974
VIII	12369	11575	3200	5449	17637	12676	12033	7963
IX	12065	11443	3203	5437	17607	12710	12043	7934
X	11721	11314	3197	5437	17612	12698	12026	7911
XI	11959	11514	3306	5376	18074	12771	12070	7904
XII	12237	11708	3365	5436	18359	12840	12125	7984

ZAPOSLENI PO OPŠTINAMA / EMPLOYEES BY MUNICIPALITY

	Opštine / Municipalities										
	Andrijevica	Bar	Berane	Bijelo Polje	Budva	Danilovgrad	Žabljak	Kolašin	Kotor	Mojkovac	Nikšić
Ø 2005	672	10507	5101	7219	7912	2484	701	1345	5232	1325	17766
Ø 2006	540	11105	5218	7316	9308	2541	805	1410	5547	1495	17616
2006											
XI	543	11340	5238	7208	9885	2658	794	1432	5862	1555	17846
XII	521	10614	5677	7670	7488	2306	916	1618	5772	1458	17073
2007											
I	521	10674	5689	7739	7519	2324	911	1619	5762	1467	17093
II	520	10734	5711	7848	7446	2308	911	1564	5738	1487	17176
III	519	10816	5695	7898	7834	2311	893	1564	5778	1482	17323
IV	523	10859	5711	7922	8178	2322	904	1567	5836	1493	17321
V	525	11175	5711	8051	8727	2325	942	1574	6028	1496	17416
VI	521	11367	5840	8134	8914	2453	962	1614	6127	1504	17458
VII	518	11622	5863	8174	9340	2585	967	1615	6252	1511	17641
VIII	530	11415	5860	8137	9007	2611	957	1614	6072	1484	17622
IX	541	11117	5963	8278	8534	2634	949	1579	6085	1514	17852
X	538	11180	5856	8071	8171	2646	937	1587	6003	1520	17579
XI	541	11209	5922	8248	8108	2652	928	1591	6074	1536	17561
XII	541	11336	5818	8218	8096	2775	977	1603	6038	1544	17730

/nastavak/

/ continued /

Nastavak	Opštine / Municipalities									
	Plav	Plužine	Pljevlja	Podgorica	Rožaje	Tivat	Ulcinj	Herceg Novi	Cetinje	Šavnik
Ø 2005	1515	995	7457	49943	3259	2904	3785	9678	4260	280
Ø 2006	1470	913	7233	53103	3292	2940	3994	10130	4545	279
2006										
XI	1464	903	7340	55622	3328	2897	4086	10280	4585	290
XII	1417	962	7293	53768	3128	3617	3733	10644	4775	296
2007										
I	1424	964	7329	54220	3147	3639	3768	10663	4771	292
II	1420	943	7212	54722	3167	3658	3719	10705	4842	283
III	1427	948	7115	54933	3191	3697	3746	10824	4858	288
IV	1424	945	7143	55064	3206	3805	3768	10933	4854	296
V	1427	957	7165	55856	3172	3938	3817	11336	4879	300
VI	1427	961	7155	56065	3212	3768	3917	11556	4922	313
VII	1428	967	7109	56360	3219	3663	4106	11899	4897	309
VIII	1427	949	7049	56417	3229	3572	3865	11381	4902	292
IX	1446	945	6976	56729	3247	3484	3925	11163	4915	288
X	1415	948	6827	57185	3250	3435	3935	11180	4913	282
XI	1418	945	7016	57430	2866	3391	3972	11098	4965	278
XII	1416	949	7105	58431	2876	3536	3941	11055	4962	276

PROSJEČNE ZARADE PO SEKTORIMA DJELATNOSTI ¹⁾
AVERAGE WAGES BY ACTIVITY SECTORS

u EUR

in EUR

	Ukupno <i>Total</i>	PO SEKTORIMA / BY ACTIVITY SECTORS						
		poljop. šumar. i vodoprivreda <i>Agriculture, forestry and water supply</i>	ribarstvo <i>Fishing</i>	vađenje ruda i kamena <i>Mining and quarrying</i>	prerađivačka industrija <i>Manufacturing</i>	proizvodnja elekt. energije <i>Electricity supply</i>	građevni- narstvo <i>Construction</i>	trgovina na veliko i malo, opravka <i>Wholesale and retail trade, repair</i>
Ø 2006	433	411	229	630	465	702	304	277
2006								
XI	440	365	203	620	487	671	316	273
XII	471	590	337	661	484	694	401	305
2007								
I	447	610	205	613	477	268	259	299
II	473	363	175	725	507	943	450	290
III	467	408	176	662	528	604	366	272
IV	479	391	158	708	500	681	404	293
V	484	395	211	756	534	685	391	285
VI	493	387	179	783	527	724	439	285
VII	487	436	201	684	536	666	421	302
VIII	497	447	173	748	543	705	452	304
IX	508	444	226	778	573	713	452	292
X	522	458	310	732	566	650	456	303
XI	539	477	165	748	546	701	446	299
XII	554	547	184	771	527	729	547	367
I – XII 2007								
I - XII 2006	114.8	101.1	85.6	115.1	114.0	99.9	141.4	108.7

/nastavak/

/ continued /

	PO SEKTORIMA / BY ACTIVITY SECTORS							
	hoteli i restorani <i>Hotels and restaurants</i>	saobraćaj, skladišt. i veze <i>Transport, storage and commu- nications</i>	financijsko posredovanje <i>Financial activities</i>	aktivnosti u vezi s nekretninama <i>Real estate activities, renting</i>	državna uprava i obav. socijalno osiguranje <i>Public administration and social insurance</i>	obrazovanje <i>Education</i>	zdravstveno i socijalno osiguranje <i>Health and social work</i>	ostale komun., društ. i lične usl. <i>Other community, social & pers. service activities</i>
Ø 2006	306	556	912	405	447	382	367	378
2006								
XI	325	618	895	391	461	389	372	372
XII	330	619	1084	487	486	389	369	487
2007								
I	357	586	979	421	463	394	397	398
II	395	587	878	441	477	397	393	389
III	384	592	1141	402	481	406	382	433
IV	354	683	1079	426	488	407	387	412
V	396	607	1221	389	490	411	400	424
VI	368	657	1185	415	508	414	411	432
VII	357	637	1085	433	511	411	405	441
VIII	381	648	1173	445	514	420	417	424
IX	394	676	1138	436	532	426	416	433
X	402	689	1238	447	538	462	500	434
XI	416	795	1318	453	534	518	501	463
XII	432	728	1318	530	540	529	511	477
I - XII 2007								
I - XII 2006	126.8	118.5	126.8	108.1	113.2	113.4	116.3	114.0

1) Vidjeti Metodološka objašnjenja na strani 51

1) See Methodological explanation on page 51

PROSJEČNE ZARADE BEZ POREZA I DOPRINOSA PO SEKTORIMA DJELATNOSTI ¹⁾

AVERAGE WAGES WITHOUT TAXES AND CONTRIBUTIONS BY ACTIVITY SECTOR

u EUR		in EUR						
	Ukupno <i>Total</i>	PO SEKTORIMA / BY ACTIVITY SECTORS						
		poljop., šumar. i vodoprivreda <i>Agriculture, forestry and water supply</i>	ribarstvo <i>Fishing</i>	vađenje ruda i kamena <i>Mining and quarrying</i>	prerađivačka industrija <i>Manufacturing</i>	proizvodnja elekt. energije <i>Electricity supply</i>	građevinarstvo <i>Construction</i>	trgovina na veliko i malo, opravka <i>Wholesale and retail trade, repair</i>
Ø 2006	282	268	162	407	302	438	216	186
2006								
XI	286	240	141	400	311	419	223	184
XII	307	389	239	429	312	432	290	206
2007								
I	303	412	143	421	322	180	178	207
II	321	245	126	498	343	630	312	202
III	317	278	125	452	356	405	249	189
IV	326	267	113	483	339	458	278	204
V	329	270	151	513	360	458	267	197
VI	335	265	128	532	356	484	300	197
VII	331	299	144	464	362	445	288	209
VIII	338	307	124	508	367	472	310	210
IX	345	305	162	528	387	478	310	202
X	355	315	222	497	382	436	313	210
XI	366	328	118	507	369	470	306	207
XII	376	376	132	522	356	488	375	254
I – XII 2007								
I – XII 2006	119.9	113.8	86.4	121.1	118.5	107.1	136.6	111.8

/nastavak/

/ continued /

	PO SEKTORIMA / BY ACTIVITY SECTORS							
	hoteli i restorani <i>Hotels and restaurants</i>	saobraćaj, skladišt. i veze <i>Transport, storage and communications</i>	financijsko posredovanje <i>Financial activities</i>	aktivnosti u vezi s nekretninama <i>Real estate activities, renting</i>	državna uprava i obav. socijalno osiguranje <i>Public administration and social insurance</i>	obrazovanje <i>Education</i>	zdravstveno i socijalno osiguranje <i>Health and social work</i>	ostale komunalne, društ. i lične usl. <i>Other community, social & pers. service activities</i>
Ø 2006	205	354	570	265	291	250	246	250
2006								
XI	220	394	564	255	302	254	249	247
XII	219	394	677	318	319	254	247	313
2007								
I	236	393	650	286	313	267	274	271
II	270	395	611	301	323	269	272	267
III	260	398	756	273	325	277	265	296
IV	243	458	718	291	332	278	269	283
V	270	404	812	266	333	281	278	291
VI	251	437	790	284	346	283	286	297
VII	244	424	724	296	348	281	282	303
VIII	260	431	783	304	350	287	290	291
IX	269	449	758	298	362	291	289	297
X	275	457	825	305	366	316	347	298
XI	284	527	878	308	363	354	348	318
XII	295	483	880	360	367	361	355	328
I – XII 2007								
I – XII 2006	128.8	124.0	13501	112.8	118.2	118.0	120.3	118.4

1) Vidjeti Metodološka objašnjenja na strani 51.

1) See Methodological explanation on page 51.

INDEKSI PROSJEČNIH ZARADA PO SEKTORIMA DJELATNOSTI
INDICES OF AVERAGE WAGES BY ACTIVITY SECTOR

Ø 2006=100

	Ukupno <i>Total</i>	PO SEKTORIMA / BY ACTIVITY SECTORS						
		poljop. šumar. i vodoprivreda <i>Agriculture, forestry and water supply</i>	ribarstvo <i>Fishing</i>	vađenje ruda i kamenarstvo <i>Mining and quarrying</i>	prerađivačka industrija <i>Manufacturing</i>	proizvodnja elekt. energije <i>Electricity supply</i>	građevinarstvo <i>Construction</i>	trgovina na veliko i malo, opravka <i>Wholesale and retail trade, repair</i>
Ø 2006	100.0	100.0	100.0	100.0	100.0	100.0	100.0	100.0
2006								
XI	101.1	87.3	88.6	98.4	104.1	95.4	103.6	97.8
XII	108.8	143.6	147.2	104.9	104.1	98.9	131.9	110.
2007								
I	103.2	148.4	89.5	97.3	102.6	38.2	85.2	107.9
II	109.2	88.3	76.4	115.1	109.0	134.3	148.0	104.7
III	107.9	99.3	76.9	105.1	113.5	86.0	120.4	98.2
IV	110.6	95.1	69.0	112.4	107.5	97.0	132.9	105.8
V	111.8	96.1	92.1	120.0	114.8	97.6	128.6	102.9
VI	113.8	94.1	78.1	124.3	113.3	103.1	144.4	102.9
VII	112.5	106.1	87.8	108.6	115.3	94.9	138.5	109.0
VIII	114.8	108.8	75.5	118.7	116.8	100.4	148.7	109.7
IX	117.3	108.3	98.7	123.5	123.2	101.6	148.7	105.4
X	120.6	111.4	135.4	116.2	121.7	92.6	150.0	109.4
XI	124.5	116.1	72.1	118.7	117.4	99.9	146.7	107.9
XII	127.9	133.1	80.4	122.4	133.3	103.8	179.9	132.5
I – XII 2007 I – XII 2006	114.8	101.1	85.6	115.1	114.0	99.9	141.4	108.7

/nastavak/

/ continued /

	PO SEKTORIMA / BY ACTIVITY SECTORS							
	hoteli i restorani <i>Hotels and restaurants</i>	saobraćaj, skladišt. i veze <i>Transport, storage and communications</i>	financijsko posredovanje <i>Financial activities</i>	aktivn. u vezi s nekretnostima <i>Real estate activities, renting</i>	državna uprava i obav. socijalno osiguranje <i>Public administration and social insurance</i>	obrazovanje <i>Education</i>	zdravst. i socijalno osiguranje <i>Health and social work</i>	ostale komunalne, društ. i lične usl. <i>Other community, social & pers. service activities</i>
Ø 2006	100.0	100.0	100.0	100.0	100.0	100.0	100.0	100.0
2006								
XI	104.8	111.2	97.7	96.3	103.1	101.8	101.4	97.9
XII	107.8	111.3	118.9	120.2	108.7	101.8	100.5	128.8
2007								
I	116.7	105.4	107.3	104.0	103.6	103.1	108.2	105.3
II	129.9	105.6	96.3	108.9	106.7	103.9	107.1	102.9
III	125.5	106.5	125.1	99.3	107.6	106.3	104.1	114.6
IV	115.7	122.8	118.3	105.2	109.2	106.5	105.5	109.0
V	129.4	109.2	133.9	96.1	109.6	107.6	109.0	112.2
VI	120.1	118.2	129.9	102.5	113.6	108.4	112.0	114.3
VII	116.7	114.6	119.0	106.9	114.3	107.6	110.4	116.7
VIII	124.5	116.5	128.6	109.9	115.0	109.9	113.6	112.2
IX	128.8	121.6	124.8	107.7	119.0	111.5	113.4	114.6
X	131.4	123.9	135.7	110.4	120.4	120.9	136.2	114.8
XI	135.9	143.0	144.5	111.9	119.5	135.6	136.5	122.5
XII	141.2	130.9	144.5	130.9	120.8	138.5	139.2	126.2
I – XII 2007 I – XII 2006	126.8	118.5	126.8	108.1	113.2	113.4	116.3	114.0

INDEKSI PROSJEČNIH ZARADA BEZ POREZA I DOPRINOSA PO SEKTORIMA DJELATNOSTI
INDICES OF AVERAGE WAGES WITHOUT TAXES AND CONTRIBUTIONS BY ACTIVITY SECTOR

Ø 2006=100

	Ukupno <i>Total</i>	PO SEKTORIMA / BY ACTIVITY SECTORS						
		poljop. šumar. i vodoprivreda <i>Agriculture, forestry and water supply</i>	ribarstvo <i>Fishing</i>	vadenje ruda i kamenja <i>Mining and quarrying</i>	prerađivačka industrija <i>Manufacturing</i>	proizvodnja elekt. energije <i>Electricity supply</i>	građevinarstvo <i>Construction</i>	trgovina na veliko i malo oprava <i>Wholesale and retail trade, repair</i>
Ø 2006	100.0	100.0	100.0	100.0	100.0	100.0	100.0	100.0
2006								
XI	101.1	87.9	87.0	98.3	102.3	95.7	102.8	98.4
XII	108.9	145.2	147.5	105.4	103.3	98.6	134.3	110.8
2007								
I	107.4	153.7	88.3	103.4	106.6	41.1	82.4	111.3
II	113.8	91.4	77.8	122.4	113.6	143.8	144.4	108.6
III	112.4	103.7	77.2	111.1	117.9	92.5	115.3	101.6
IV	115.6	99.6	69.8	118.7	112.3	104.6	128.7	109.7
V	116.7	100.7	93.2	126.0	119.2	104.6	123.6	105.9
VI	118.9	98.9	79.0	130.7	117.9	110.5	138.9	105.9
VII	117.4	111.6	88.9	114.0	119.9	101.6	133.3	112.4
VIII	119.9	114.6	76.5	124.8	121.5	107.8	143.5	112.9
IX	122.3	113.8	100.0	129.7	128.1	109.1	143.5	108.6
X	125.9	117.5	137.0	122.1	126.5	99.5	144.9	112.9
XI	129.8	122.4	72.8	124.6	122.2	107.3	141.7	111.3
XII	133.3	140.3	81.5	128.3	117.9	111.4	173.6	136.6
<u>I - XI 2007</u> <u>I - XI 2006</u>	119.9	113.8	86.4	121.1	118.5	107.1	136.6	111.8

/nastavak/

/ continued /

	PO SEKTORIMA / BY ACTIVITY SECTORS							
	hoteli i restorani <i>Hotels and restaurants</i>	saobraćaj, skladišt. i veze <i>Transport, storage and communications</i>	finansijsko posred. <i>Financial activities</i>	aktivn. u vezi s nekretnostima <i>Real estate activities, renting</i>	državna uprava i obav. socijalno osiguranje <i>Public administration and social insurance</i>	obrazovanje <i>Education</i>	zdravstveno i socijalno osiguranje <i>Health and social work</i>	ostale komunalne, društ. i lične usl. <i>Other community, social & pers. service activities</i>
Ø 2006	100.0	100.0	100.0	100.0	100.0	100.0	100.0	100.0
2006								
XI	105.8	111.3	98.6	96.2	103.8	101.6	101.2	98.4
XII	106.8	111.3	118.8	120.0	109.6	101.6	100.4	125.2
2007								
I	115.1	100.0	114.0	107.9	107.6	106.8	111.4	108.4
II	131.7	111.6	107.2	113.6	111.0	107.6	110.6	106.8
III	126.8	112.4	132.6	103.0	111.7	110.8	107.7	118.4
IV	118.5	129.4	126.0	109.8	114.1	111.2	109.4	113.2
V	131.7	114.1	142.5	100.4	114.4	112.4	113.0	116.4
VI	122.4	123.4	138.6	107.1	118.9	113.2	116.3	118.8
VII	119.0	119.8	127.0	111.7	119.6	112.4	114.6	121.2
VIII	126.8	121.8	137.4	114.7	120.3	114.8	117.9	116.4
IX	131.2	126.8	133.0	112.5	124.4	116.4	117.5	118.8
X	134.1	129.1	144.7	115.1	125.8	126.4	141.1	119.2
XI	138.5	148.9	154.0	116.2	124.7	141.6	141.5	127.2
XII	143.9	136.4	154.4	135.9	126.1	144.4	144.3	131.2
<u>I - XII 2007</u> <u>I - XII 2006</u>	128.8	124.0	135.0	112.8	118.2	118.0	120.3	118.4

PROSJEČNE ZARADE PO OPŠTINAMA ¹⁾ / AVERAGE WAGES BY MUNICIPALITY

u EUR

in EUR

	Opštine / Municipalities										
	Andrijevica	Bar	Berane	Bijelo Polje	Budva	Danilovgrad	Žabljak	Kolašin	Kotor	Mojkovac	Nikšić
Ø 2006	343	362	366	357	466	358	311	385	447	368	487
2006											
XI	341	359	359	356	479	355	302	373	443	380	506
XII	392	403	383	369	537	360	337	374	460	385	546
2007											
I	362	408	394	369	470	356	353	373	467	359	499
II	355	402	388	383	549	394	424	425	460	403	561
III	367	435	382	387	512	397	380	439	465	433	494
IV	393	432	391	391	537	399	356	420	473	417	542
V	395	440	392	387	516	488	400	454	480	409	573
VI	393	464	400	396	504	402	327	428	483	413	556
VII	381	460	398	390	506	431	403	417	501	408	512
VIII	410	439	415	398	538	405	432	441	483	447	551
IX	391	448	408	433	522	423	405	416	520	410	565
X	423	462	431	434	544	420	427	437	536	425	571
XI	428	461	432	428	583	432	437	488	557	468	594
XII	474	468	448	466	635	460	464	488	547	451	626
I - XII 2007	116.0	122.9	111.2	113.7	115.0	117.0	128.0	113.5	111.4	114.7	114.0
I - XII 2006											

/nastavak/

/continued/

	Opštine / Municipalities									
	Plav	Plužine	Pljevlja	Podgorica	Rožaje	Tivat	Ulcinj	Herceg Novi	Cetinje	Šavnik
Ø 2006	318	451	460	483	385	420	309	356	315	376
2006										
XI	333	445	440	484	412	445	319	393	291	347
XII	348	419	541	524	421	442	324	371	301	464
2007										
I	335	284	432	500	383	415	290	371	290	353
II	366	445	436	521	498	464	317	371	307	462
III	384	447	468	510	421	448	343	386	390	390
IV	362	417	481	520	431	491	342	429	336	393
V	359	440	479	522	425	469	349	397	342	413
VI	359	440	498	550	431	501	355	396	348	390
VII	372	415	498	532	449	467	344	424	445	427
VIII	363	448	517	551	459	451	363	430	337	405
IX	379	466	515	560	464	492	387	405	440	412
X	404	448	519	576	477	531	370	419	485	421
XI	403	542	524	606	510	566	382	429	379	475
XII	409	462	521	621	513	522	389	433	392	478
I - XI 2007	118.2	98.4	107.0	113.5	118.4	115.7	114.6	114.6	116.2	111.7
I - XI 2006										

1) Vidjeti Metodološka objašnjenja na strani 51

1) See Methodological explanation on page 51.

PROSJEČNE ZARADE BEZ POREZA I DOPRINOSA PO OPŠTINAMA ¹⁾
AVERAGE WAGES WITHOUT TAXES AND CONTRIBUTIONS BY ACTIVITY SECTOR

	u EUR											in EUR										
	Opštine / Municipalities																					
	Andrijevica	Bar	Berane	Bijelo Polje	Budva	Danilovgrad	Žabljak	Kolašin	Kotor	Mojkovac	Nikšić											
Ø 2006	225	238	241	234	301	239	205	252	290	242	316											
2006																						
XI	223	235	238	236	311	237	201	245	288	249	326											
XII	255	264	254	242	346	246	224	245	301	253	354											
2007																						
I	241	276	269	251	306	241	241	253	320	246	341											
II	240	274	264	261	367	270	288	291	312	274	382											
III	252	295	259	264	344	271	260	297	316	296	337											
IV	269	295	268	268	363	272	245	285	322	283	368											
V	271	300	268	265	349	334	274	308	326	279	388											
VI	267	314	273	271	341	273	224	290	329	282	380											
VII	260	312	271	266	342	293	282	283	343	278	348											
VIII	278	297	282	275	367	276	294	300	329	305	373											
IX	267	304	283	284	353	287	279	283	354	281	384											
X	288	313	294	297	368	285	291	299	365	290	387											
XI	293	313	294	292	394	294	297	329	381	319	402											
XII	323	318	307	317	429	313	316	331	373	308	423											
I – XII 2007	120.4	125.2	115.4	118.4	120.0	119.2	132.7	117.5	116.9	119.0	119.3											
I - XII 2006																						

/nastavak/	/ continued /									
	Opštine / Municipalities									
	Plav	Plužine	Pljevlja	Podgorica	Rožaje	Tivat	Ulcinj	Herceg Novi	Cetinje	Šavnik
Ø 2006	206	286	297	314	251	273	205	236	209	245
2006										
XI	217	281	285	314	268	292	212	260	195	228
XII	223	265	341	341	270	288	215	248	200	303
2007										
I	221	193	293	339	260	282	198	254	197	239
II	243	304	296	353	336	315	217	257	211	313
III	261	304	315	346	284	306	235	265	261	265
IV	248	285	326	353	293	335	236	295	231	268
V	245	298	325	354	289	318	239	272	235	281
VI	244	298	339	373	292	339	242	271	240	265
VII	254	280	340	361	304	317	236	289	305	290
VIII	248	302	349	372	313	306	248	308	231	275
IX	258	316	348	380	315	335	264	277	299	280
X	275	304	350	391	328	363	256	288	330	286
XI	276	365	356	411	346	394	261	294	260	322
XII	279	314	354	421	347	355	266	298	269	325
<u>I – XII 2007</u>	123.8	105.2	112.5	118.2	123.5	121.2	118.5	119.1	120.1	116.3
I - XII 2006										

¹⁾ Vidjeti Metodološka objašnjenja na strani 51.¹⁾ See Methodological explanation on page 51.

METODOLOŠKA OBJAŠNJENJA

INDUSTRIJA

Prikazani podaci prikupljaju se mjesečnim izvještajima industrije na obrascu IND-1. Mjesečnim izvještajem industrije obuhvataju se sva preduzeća kao i njihovi djelovi koji obavljaju industrijsku djelatnost, odnosno koji su prema Klasifikaciji djelatnosti razvrstani u sektore: Vadjenje rude i kamena, Preradivačka industrija i Proizvodnja i snabdijevanje električnom energijom, gasom i vodom. Preduzeća neindustrijskih djelatnosti su izvještajne jedinice ako u svom sastavu imaju jedinicu koja se bavi industrijskom djelatnošću.

Indeks fizičkog obima industrijske proizvodnje formiran je na osnovu podataka o količinama proizvoda i ponderacionog sistema. Podaci o količinama daju se prema Nomenklaturi proizvoda i sirovina. Za obračun indeksa fizičkog obima industrijske proizvodnje ponderi izražavaju prosječni društveni proizvod po jedinici proizvoda. Nomenklatura utroška energije i goriva štampana je na samom obrascu IND-1, tab-3. Za obračun indeksa utroška sirovina, utroška energije i goriva, indeksa zaliha gotovih proizvoda ponderi su odgovarajuće prosječne cijene. Kod utroška sirovina posebno se prate sirovine iz domaćih izvora i sirovine porijeklom iz uvoza. Zalihe sirovina odnose se na količine krajem mjeseca a namijenjene su za potrošnju u preduzeću za koje se podnosi izvještaj.

ŠUMARSTVO

Podaci se prikupljaju mjesečnim izvještajem ŠUM-22. Ovim izvještajem obuhvaćena su šumarska i druga preduzeća koja u državnim šumama vrše proizvodnju šumskih sortimenata, bez obzira da li im je gazdovanje šumama osnovna djelatnost ili nije.

Indeks fizičkog obima iskorišćavanja šuma obračunava se na osnovu podataka o proizvodnji šumskih sortimenata, po nomenklaturi proizvoda i ponderacionih koeficijenata. Količine predstavljaju neto drvenu masu sortimenata izraženu u kubnim metrima. Za izračunavanje indeksa proizvodnje šumskih sortimenata kao koeficijenti ponderacije koriste se prosječne prodajne cijene proizvoda.

GRAĐEVINARSTVO

Podaci o građevinarstvu prikupljaju se na osnovu kvartalnog izvještaja GRAĐ – 31, kojim se obuhvataju sva preduzeća iz sektora građevinarstva, kao i jedinice koje obavljaju građevinsku djelatnost, a naleže se u sastavu negrađevinskih preduzeća. Podaci se prikupljaju od preduzeća iz Crne Gore kao i poslovnih jedinica stranih preduzeća koji obavljaju građevinsku djelatnost u Crnoj Gori.

Vrijednost izvršenih radova izražena je u tekućim cijenama i predstavlja stvarno izvršene radove.

Podaci o vrijednosti izvršenih građevinskih radova daju se na osnovu privremenih situacija koje ispostavljaju izvođači radova. Zaposleni na građenju su zaposleni na gradilištima koji obavljaju građevinske, instalaterske i završne radove. Nijesu uključeni zaposleni koji rade na inženjerko-tehničkim i administrativnim poslovima.

METHODOLOGICAL EXPLANATIONS

INDUSTRY

The shown data are collected by monthly surveys (through the questionnaire IND-1). Monthly industry survey includes all enterprises, as well as their parts engaged in the industry activity, i. e. according to the Classification of Activities are classified into sectors: Mining and quarrying, Manufacturing, Electricity, gas, and water supply. Enterprises with non-industrial activities represent reporting units if they have in their structure a unit dealing with industrial production.

The physical volume index of industrial production is calculated on the basis of data on products quantity and weights system. The data on quantity are given on the basis of Classification of activities and Nomenclature of products. For calculation of physical volume index of industrial production weights express average domestic product by unit of product. Nomenclature of energy and fuel consumption is printed within the questionnaire IND-1, tab-3. For calculation of index of raw materials, electricity, and fuels consumption, index of final product reserves, weights are respective average prices. Raw materials from domestic sources and with the export origin are especially surveyed within the raw materials consumption. Raw material reserves refer to the quantities at the end of the month and are allocated for the consumption by an enterprise that is reported.

FORESTRY

The data are collected on the basis of the monthly report SUM-22. By this report comprised are forestry and other enterprises dealing with production of forest assortments in state forests, disregarding if forest assortments production is their basic activity or not.

The physical volume index of forests exploitation is calculated on the basis of data on the production of forest assortments, according to the present nomenclature of products and weights coefficients. Quantities represent net wood mass of assortments expressed in cubic meters. In order to calculate the index of forest assortments production, average purchase prices are used as weighting coefficients.

CONSTRUCTION

Data on construction are collected on the basis of quarterly construction survey GRAĐ – 31 that includes all enterprises from construction sector as well as the units that perform construction activity and are integrated in non-construction enterprises. The data are obtained from enterprises in Montenegro as well as from business units performing construction activity in Montenegro.

The value of finished work is expressed in the current prices and represents works actually performed.

The data on the value of construction works done are obtained on the basis of current situation reported by the contractors. Employees within the construction are employees at the construction sites performing construction, installation, and finished works. Employees not included are those engaged in engineering and administrative tasks.

Izvršeni efektivni časovi predstavljaju časove izvršenog rada na građevinskim radovima.

Nove narudžbe predstavljaju ukupnu vrijednost ugovorenih radova između proizvođača i treće strane na osnovu zaključenog ugovora.

STANOVNIŠTVO

Izvori podataka – Podaci o rođenim, umrlim i zaključenim brakovima prikupljaju se od matičara, a podaci o razvedenim brakovima od sudova nadležnih za razvod braka.

Obuhvatnost i definicije – Podaci o prirodnom kretanju stanovništva obuhvataju broj rođenih, umrlih i vjenčanih, koji je registrovan u matičnoj službi, dok se broj razvedenih brakova prikupljaju od strane nadležnih sudova.

Metodološki materijal – Detaljna objašnjenja o metodologiji primjenjenoj u vitalnoj statistici nalaze se u Uputstvu za matičare o popunjavanju statističkih listića (o rođenju, slučaju smrti i vjenčanju) i u Uputstvu za sudije o popunjavanju statističkih listića o razvedenom braku.

ZAPOSLENOST I ZARADE

Zaposlenost

Podaci o godišnjem prosjeku zaposlenih izračunati su na osnovu dva stanja (31.marta i 30.septembar), a dobijeni su redovnim polugodišnjim izvještajem o zaposlenim i zaradama zaposlenih (RAD – 1P) kao i na osnovu podataka koji su regulisani Zakonom o evidencijama u oblasti rada i zapošljavanja ("Sl.list RCG", br.69/03), a vode ih Fondovi Penzijsko invalidskog osiguranja i Zdravstva, koje mi redovno preuzimamo od istih.

Podaci o mjesečnom broju zaposlenih dobijeni su na osnovu redovnog mjesečnog izraživanja o zaposlenim i zaradama zaposlenih (Rad – 1, koje se vrši na bazi uzorka, i prijava – odjava osiguranika koje vode Republički Fondovi Penzijsko invalidskog osiguranja i Zdravstva.

Obuhvatnost

Polugodišnjim izvještajem o zaposlenim i zaradama zaposlenih (RAD – 1P) obuhvaćena su preduzeća, ustanove, zadruge i organizacije svih oblika svojine. Ovim istraživanjem nijesu obuhvaćeni strani državljani zaposleni u našoj zemlji. Ne smatraju se zaposlenim lica koja rade po ugovoru o djelu ili po ugovoru o obavljanju privremenih i povremenih poslova.

Definicije

Pod pojmom zaposleni podrazumijevaju se sva lica koja imaju zasnovan radni odnos sa preduzećem, ustanovom ili organizacijom ili individualnim poslodavcem bez

Working hours are the actual hours that the workers engaged at construction sites spent doing work.

New orders represent the total value of contracted works between producers and the third part on the basis of the concluded contract.

POPULATION

Data sources – Data on births, deaths and marriages are collected from Registry Offices and data on divorces from the courts of respective jurisdiction.

Coverage and definitions – Data on population changes include the number of births, deaths and marriages, registered by Registry Offices, while the number of divorces is collected by the courts of respective jurisdiction.

Methodological material – More detailed explanations on methodology applied in vital statistics can be found in the "Instructions for the filling and submitting of statistical questionnaires on births, deaths and marriages" as well as in the "Instructions for judges" for the filing of statistical questionnaires on divorces.

EMPLOYMENT AND EARNINGS

Employment

The data on annual average of employees are calculated on the basis of two reports (31 March and 30 September) and they are obtained by the regular Semiannual report on employees and their earnings (RAD-1P) as well as on the basis of data regulated by the Law on Record in Labor and Employment ("Official Gazette of Republic of Montenegro", No. 69/03), and managed by the Fund for Pension and Disability Insurance and Health Fund.

The data on monthly number of employees are obtained by regular monthly survey of employees and their earnings (RAD-1), carried out on the basis of sample, and registration/withdrawal of beneficiaries in Republic Health Fund and Fund for Pension and Disability Insurance.

Coverage

The Semiannual Report on employees and their earnings (RAD-1) includes all enterprises, institutions and organizations of all types of ownership. This survey does not include foreign citizens employed in our country. The persons that work pursuant to a job contract or a contract on casual engagement are not considered employed.

Definitions

The term "employed" refers to all persons being employed in enterprises, institutions, organizations or b

obzira da li su radni odnos zasnovali na neodređeno ili određeno vrijeme i da li rade puno ili kraće od punog radnog vremena.

ZARADE

Izvori podataka

Podaci o prosječnim zaradama prikazuju zarade isplaćene u mjesecu i dobijeni su iz redovnog mjesečnog istraživanja Mjesečni izvještaj o zaposlenim i zaradama (obrazac RAD – 1).

Obuhvatnost

Istraživanjem su obuhvaćena preduzeća, ustanove, zadruge ili organizacije, svih oblika svojine kao i njihove jedinice u sastavu, po organizaciono teritorijalnom principu, počev od nivoa opštine.

Definicije

Zaradu u smislu člana 65. Zakona o radu čini: zarada koju je zaposleni ostvario za obavljeni rad i vrijeme provedeno na radu, uvećana zarada, naknada zarade i druga primanja utvrđena kolektivnim ugovorom, a koja su isplaćena u većem iznosu od iznosa propisanog opštim kolektivnim ugovorom.

Zarada se uvećava u skladu sa kolektivnim ugovorom za: rad duži od punog radnog vremena; noćni rad; rad u dane državnih i vjerskih praznika koji su zakonom utvrđeni kao neradni dani; minuli rad i u drugim slučajevima utvrđenim kolektivnim ugovorom.

Prosječna zarada izračunava se tako što se ukupno isplaćena masa zarada u mjesecu dijeli sa brojem zaposlenih na koje se odnose izvršene isplate.

Zaradu bez poreza i doprinosa čini zarada umanjena za poreze i doprinose na teret zaposlenog.

Indeks realne prosječne zarade bez poreza i doprinosa predstavlja odnos između indeksa nominalne prosječne zarade bez poreza i doprinosa i indeksa troškova života.

SAOBRAĆAJ, SKLADIŠTENJE I VEZE

Željeznički saobraćaj – Izvor podatka je mjesečni izvještaj JPŽ Crne Gore. Podaci se odnose na ostvareni obim željezničkog saobraćaja na teritoriji Republike Crne Gore.

Pomorski saobraćaj - Podaci o pomorskom prometu i radu pomorskih brodskih preduzeća dobijeni su putem mjesečnih izvještaja. Posebno su iskazani podaci o prometu u lukama.

Vazdušni saobraćaj – Izvor podataka o vazdušnom saobraćaju su mjesečni izvještaji aerodroma u Podgorici i Tivtu. Podaci o prevozu putnika i robe odnose se na unutrašnji i međunarodni saobraćaj.

y self-employed individuals no matter whether their employment status is based on a permanent or temporary contract and whether they work on a full-time or part-time basis.

EARNINGS

Data sources

The data on average earnings are earnings paid out in a month, and are obtained from regular monthly survey Monthly report on employees and their earnings (questionnaire RAD-1).

Coverage

The survey covers enterprises, institutions, cooperatives or organizations and their composite units of all kinds of ownership, by organizational and territorial principle, starting from the level of municipality.

Definitions

Earning, in the sense of the Art. 65 of the Law on Labor consists of earning that an employee has realized for work performed and for time spent at work, then increased earning, compensation of the earning and other incomes established by the Collective Contract and paid in the higher amount than foreseen by the General Collective Contract.

The earning is increased in accordance with Collective Contract for: over working time; night work; work in state and religious holidays established by the law as non-working days; past work, and for other cases under the Collective Contract.

Calculation of the average earnings is done so that the total sum of all monthly earnings is divided by the number of employees to whom the paid earnings refer.

Net salaries and wages are tax and contributions deducted (gross) salaries and wages.

Index of real average earnings without taxes and contributions is the ratio between nominal average earnings index and cost of living index.

TRANSPORT, STORAGE AND COMMUNICATIONS

Railway transport – The data source is monthly survey of Public Railway Transport of Montenegro. The data refer to realized volume of railway transport at the territory of Montenegro.

Marine transport – The data on marine traffic and work of marine transport enterprises are obtained by the monthly surveys. The data on transport in ports are shown separately.

Air transport – The data source on air transport are monthly surveys of airport in Podgorica and Tivat. The data on transport of passengers and goods refer to the national and international transport.

Drumski saobraćaj – Izvor podataka su mjesečni izvještaji specijalizovanih autosaoobraćajnih preduzeća i pogona pri privrednim organizacijama kojima auto saobraćaj nije osnovna djelatnost. Prevoz za vlastite potrebe nije obuhvaćen.

PTT promet – Izvori podataka o PTT prometu su mjesečni izvještaji Pošte Crne Gore i Telekom.

PROMET ROBE, UGOSTITELJSTVO I TURIZAM

Promet u trgovini na malo – Podaci o prometu u trgovini na malo prikupljaju se mjesečnom službom na bazi podataka uzorka i to za 2006. i 2007. godinu. Okvir za uzorak su preduzeća čija je osnovna djelatnost trgovina na malo. Prethodnih godina u okvir za uzorak ulazila su sva preduzeća koja su pored osnovne djelatnosti imala i trgovinu.

U mjesečnoj publikaciji nijesu uključeni preduzetnici. Tabela prikazuje nominalni iznos mjesečnog prometa trgovine na malo, indeks prometa izraženog u tekućim cijenama tj. indeks koji se dobije deflacionizacijom podataka tekuće godine.

Ugostiteljstvo – Podaci o prometu u ugostiteljstvu prikupljaju se tromjesečnom izvještajnom službom za objekte društvenog sektora, a godišnjom izvještajnom službom za društveni i privatni sektor. Podaci po mjesecima, dok se ne izvrši obrada tromjesečnih izvještaja se procjenjuju.

Turizam - Podaci se prikupljaju mjesečnom izvještajnom službom i odnose se na noćenja i posjetioce koji su koristili usluge noćenja u poslovnim jedinicama ugostiteljskih i neugostiteljskih organizacija i privatnim domaćinstvima.

Otkup poljoprivrednih proizvoda – Podaci se prikupljaju mjesečnom izvještajnom službom. Otkupom se obuhvata prodaja poljoprivrednih proizvoda iz sopstvene proizvodnje društvenih gazdinstava i otkup poljoprivrednih proizvoda od individualnih poljoprivrednih proizvođača.

CIJENE

CIJENE PROIZVODJAČA INDUSTRIJSKIH PROIZVODA

Pod prodajnom cijenom proizvođača industrijskih proizvoda podrazumijeva se cijena po kojoj proizvođači prodaju svoje proizvode u najvećim količinama na domaćem tržištu, ili je cijena po kojoj proizvođač vrši obračun s drugim proizvođačima.

Prosječne mjesečne cijene se računaju ponderisanjem cijena količinama realizovanim na domaćem tržištu u toku jedne godine.

Indeksi cijena izračunavaju se ponderima na bazi podataka o realizaciji industrijske proizvodnje; svake godine vrši se korektura pondera, a novi ponderi izračunavaju se svake pete godine.

Road transport – The data source are monthly surveys of specialized transportation enterprises and means of transportation of other organizations whose main activity is not road transport. Transport for own needs is not covered.

Post transport – The data source on PTT transport are monthly reports of Post Office of Montenegro and Telekom.

TRANSPORT OF GOODS, CATERING, AND TOURISM

Turnover in retail trade – The data on turnover in retail trade are collected by monthly survey on the basis of sample data for 2006, and 2007. The sample framework is enterprises with retail trade as the main activity. In the previous years, all enterprises performing trade activities, beside the main activity were included in the sample framework.

The entrepreneurs are not included in the monthly publication. The table shows nominal amount of monthly turnover of retail trade, index of turnover in the current prices, i.e. index obtained by data deflation for the current year.

Catering – the data on the realized turnover in the catering are collected by quarterly reports for state sector organizations, and by annual reports for state and private sector. The monthly data are estimated until the quarterly estimation is corrected.

Tourism - the data are collected by the monthly statistical survey and refer to the overnight stays and tourist using overnight stay services in the business units of catering and non-catering organizations, and private households.

Purchase of agricultural products – the data are collected by the monthly surveys. The purchase refers to the sale of agricultural products of agricultural holdings' own production and purchase of agricultural products bought from private agricultural producers.

PRICES

PRODUCER PRICES OF INDUSTRIAL PRODUCTS

Purchase prices are the prices that industrial producers apply in selling their products in the highest quantities at the domestic market, or the prices by which the producer makes calculation with other producer.

Average monthly prices are calculated by weighting prices of quantities realized at the national market during a year.

Price indices are calculated by weights on the basis of data on the realized industrial production; updating of weights is done every year, and new weights are calculated every fifth year.

CIJENE NA MALO

Cijene na malo su cijene po kojima trgovina na malo, individualni proizvođači i vršioci usluga prodaju svoje proizvode i usluge krajnjim potrošačima, uključujući porez na promet.

Cijene na malo prate se u četiri grada RCG: Podgorici, Nikšiću, Kotoru i Pljevljima koji predstavljaju veće tržišne centre. Cijene industrijsko-neprehrambenih proizvoda snimaju se jedanput mjesečno u periodu od 3-10-og, industrijsko-prehrambenih proizvoda od 11-14-og, a cijene poljoprivrednih proizvoda dva puta mjesečno i to: 1-7-og i 15-21-og u mjesecu.

Prosječne mjesečne cijene za grad kod svih proizvoda i usluga, računaju se neponderisanom aritmetičkom sredinom, dok se prosječne mjesečne cijene za RCG računaju na bazi prosječnih cijena četiri grada koje se ponderišu strukturom prometa količina realizovanih u trgovini na malo i pijaci.

Prosječne godišnje cijene industrijskih proizvoda i usluga predstavljaju neponderisani prosjek cijena za dvanaest mjeseci, a godišnje cijene poljoprivrednih proizvoda dobijaju se ponderisanjem prosječnih mjesečnih cijena podacima o prometu na malo po mjesecima.

Početkom svake godine vrši se korektura pondera na bazi rasta cijena. Indeksi cijena na malo preračunavaju se početkom svake godine na prethodnu godinu kao baznu.

INDEKS TROŠKOVA ŽIVOTA

Indeks troškova života je poseban vid indeksa cijena na malo artikala i usluga lične potrošnje, koji se računa prema određenoj strukturi potrošnje gradskih domaćinstava.

Indeks troškova života izračunava se prema namjeni potrošnje, vremenu potrošnje (mjesečni, godišnji, višegodišnji), i podjelom na robe i usluge.

RETAIL PRICES

Retail prices are the prices that retail shops, individual producers and services providers apply in selling goods to final users including turnover tax.

Retail prices are surveyed in four towns of Montenegro: Podgorica, Niksic, Kotor, and Pljevlja that represent major trade centers. The prices of industrial non-food products are surveyed once in a month (in the period 3rd to 10th of a month), prices of industrial food products 11th -14th of a month), and prices of agricultural products twice a month: 1st -7th and 15th -21st of a month.

Average monthly prices for a town for all products and services are calculated by the non-weighted arithmetic average, while average monthly prices for Montenegro are calculated on the basis of average prices for four towns weighted by the structure of turnover realized in retail trade and at the market.

Average annual prices for industrial products and services present non-weighted prices average for 12 months, and annual prices for agricultural products are obtained by weighting average monthly prices with the data on retail turnover by months.

The weights are updated by the price changes at the beginning of each year. Retail price index is recalculated at the beginning of each year relative to the previous year as a base year.

LIVING COST INDEX

Costs of living index is special type of retail price index of products and services for private consumption, which is calculated by certain structure of consumption of urban households.

Costs of living index is calculated according to the purpose, and time of consumption (monthly, annual, and multiannual), and by the division between goods and services.

REDAKCIJA / *EDITORIAL BOARD* :

RAJKO LAKOVIĆ, rukovodilac / coordinator
Gordana Radojević, Gojko Dragaš, Branka Šušić – Radovanović,
Radmila šišević, Ranko Bošković, Darko Krkeljić

Tehnički urednik / *Editor* : Radmila Šišević

Prevod / *Translated by*: Katarina Bigović, Vlado Radenović

IZDAJE I ŠTAMPA: Zavod za statistiku Crne Gore – MONSTAT, Podgorica, IV Proleterske br. 2

Prilikom korišćenja navesti izvor – preporučuje se skraćenica – MSP, br.- /2008

ODGOVARA: Radomir Đurović, direktor. Tiraž 150 primjeraka. Tel: +382 81 248-116

PUBLISHED AND PRINTED BY: Statistical Office of Montenegro – MONSTAT, Podgorica, IV Proleterske no. 2

Data using is subject to quoting source – abbreviation recommended: MSR, no. -/2008

RESPONSIBLE: Radomir Đurović, Director. Circulation 150 copies. Phone: +382 81 248-116

E-mail: statistika@cg.yu Web Site: www.monstat.cg.yu