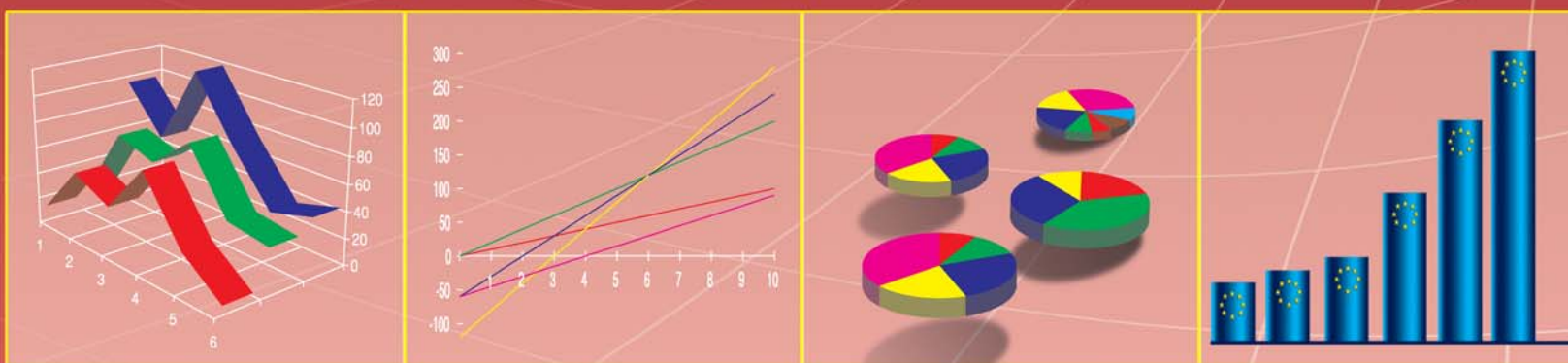


# MJESEČNI STATISTIČKI PREGLED MONTHLY STATISTICAL REVIEW



2008

12

ZAVOD ZA STATISTIKU CRNE GORE  
*STATISTICAL OFFICE OF MONTENEGRO*

GODINA LVI / YEAR ( 56)

ISSN 0354-365X

**MJESEČNI STATISTIČKI PREGLED**  
*MONTHLY STATISTICAL REVIEW*

**2008**  
**12**

**PODGORICA, 2008**

IZDAJE I ŠTAMPA: Zavod za statistiku Crne Gore - MONSTAT  
*PUBLISHED AND PRINTED BY: Statistical Office of Montenegro - MONSTAT*

ODGOVARA: Radomir Đurović, direktor  
*RESPONSIBLE: Radomir Đurović, Director*

Podgorica, IV Proleterske br. 2, Tel: +382 81 241-206  
E-mail: [statistika@cg.yu](mailto:statistika@cg.yu) Web Site: [www.monstat.cg.yu](http://www.monstat.cg.yu)

CIP – Katalogizacija u publikaciji  
Centralna narodna biblioteka Crne Gore, Cetinje  
311 / 314

Mjesečni statistički pregled = Monthly  
Statistical review. Urednik Rajko Laković. – God.  
1, br.1 (1953) – . - Podgorica ( IV Proleterske br. 12)  
Zavod za statistiku Crne Gore – Monstat, 1992 ( Podgorica:  
Zavod za statistiku Crne Gore ) . – 30 cm

Mjesečno. – je nastavak: Mjesečni statistički pregled  
NR Crne Gore (Titograd ) = ISSN 0544-912X  
ISSN 0354-365X = Mjesečni statistički pregled (Podgorica)  
COBISS. CG ID 07622928

## UVOD

U MJESEČNOM STATISTIČKOM PREGLEDU Zavod za statistiku – MONSTAT objavljuje podatke za Crnu Goru. To su službeni statistički podaci koji se prikupljaju i obrađuju u skladu sa programom statističkih istraživanja i rezultat su rada zvaničnih statističkih službi.

Statistički podaci u MJESEČNOM STATISTIČKOM PREGLEDU prikazani su u godišnjim, kvartalnim i mjesečnim serijama i sistematizovani su u dva dijela. Godišnje serije obuhvataju tri do pet posljednjih uzastopnih godina. Kvartalne serije se odnose na kvartale u prošloj i tekućoj godini, a mjesečne serije obuhvataju period od trinaest mjeseci iz tekuće i prethodne godine. Ispod odgovarajućih tabela, gdje je potrebno, daju se kratka objašnjenja.

Pored podataka koje prikuplja i obrađuje Zavod za statistiku Crne Gore - MONSTAT, u ovom broju PREGLEDA su objavljeni i podaci Zavoda za zapošljavanje i Centralne Banke Crne Gore.

Podaci za tekuću godinu su obično prethodni, pa su moguće manje greške koje se postepeno ispravljaju u narednim brojevima i obilježavaju se zvjezdicom, u onom broju PREGLEDA u kojem je izvršena ispravka.

Sadržaj publikacije je prilagođen međunarodnim potrebama i obavezama u smislu primjene Klasifikacije djelatnosti (NACE Rev1), koja se primjenjuje od 01.01.2001. godine.

Od januara 2008. godine MJESEČNI STATISTIČKI PREGLED je obogaćen novim sadržajima i preveden je na engleski jezik.

## INTRODUCTION

*Statistical Office of Montenegro publishes statistical data for Montenegro in the MONTHLY STATISTICAL REVIEW. These are the official statistical data collected and processed according to the Programme of Statistical Surveys as the result of official statistical services.*

*Statistical data in the MONTHLY STATISTICAL REVIEW are presented in annual, quarterly and monthly series and are systemized in two parts. The Annual series of data cover 3-5 last consecutive years. Quarterly series refer to quarters in the previous and current year, and monthly series include period of thirteen months from the previous and current year. Where necessary, short explanations are given below the tables.*

*Besides data collected by the Statistical Office of Montenegro - MONSTAT, this issue of MONTHLY STATISTICAL REVIEW also publishes data from Employment Agency and Central Bank of Montenegro.*

*Data for the current year are usually preliminary, so minor errors are possible and are gradually corrected in the following numbers, and they are marked with the small star in the number of the MONTHLY STATISTICAL REVIEW where the correction has been made.*

*The contents of the publication is adapted to the international needs and obligations regarding the application of the Classification of Activities (NACE, REV1), used since January 2001.*

*Since January 2008, the MONTHLY STATISTICAL REVIEW contains new contents and has been translated into English language.*

## ZNACI

## SYMBOLS

nema pojave	=	–	=	No occurrence of event
ne raspolaže se podatkom	=	...	=	Data not available
podatak je manji od 0,5 date jedinice mjere	=	0	=	Value not zero but less than 0,5 of the unit of E
prosjeak	=	Ø	=	Average
ispravljen podatak	=	*	=	Corrected data
nepotpun, odnosno nedovoljno provjeren podatak	=	( )	=	Incomplete or insufficiently checked data



**SADRŽAJ**

<b>UVOD</b> .....	3
<b>SADRŽAJ</b> .....	5
<b>OPŠTI PREGLED INDEKSA</b>	
Kvartalni indeksi .....	7
Mjesečni indeksi.....	8
<b>STANOVNIŠTVO</b>	
Prirodno kretanje stanovništva.....	10
Prirodno kretanje stanovništva po opštinama .....	11
Kretanje stanovništva unutar Crne Gore po opštinama .....	12
<b>ZAPOSLENOST I ZARADE</b>	
Zaposleni po sektorima djelatnosti .....	13
Zaposleni po opštinama .....	14
Nezaposlena lica.....	15
Prosječne zarade po sektorima djelatnosti .....	16
Prosječne zarade bez poreza i doprinosa po sektorima djelatnosti .....	17
Indeksi prosječnih zarada po sektorima djelatnosti .....	18
Indeksi prosječnih zarada bez poreza i doprinosa po sektorima djelatnosti .....	19
Prosječne zarade po opštinama.....	20
Prosječne zarade bez poreza i doprinosa po opštinama.....	21
<b>CIJENE</b>	
Indeksi cijena proizvođača industrijskih proizvoda.....	22
Indeksi cijena na malo.....	24
Indeksi cijena na malo po grupama proizvoda .....	25
<b>Indeksi troškova života</b> .....	26
<b>ŠUMARSTVO</b> .....	28
<b>INDUSTRIJA</b>	
Indeksi industrijske proizvodnje po sektorima .....	29
Indeksi industrijske proizvodnje po podsektorima .....	30
<b>GRADEVINARSTVO</b>	
Vrijednost izvršenih i ugovorenih radova, broj zaposlenih i izvršeni efektivni časovi .....	32
<b>SPOLJNA TRGOVINA</b>	
Izvoz i uvoz prema zemljama namjene – porijekla .....	33
Izvoz i uvoz robe .....	34
<b>UNUTRAŠNJA TRGOVINA</b>	
Promet u trgovini na malo.....	37
Prodaja i otkup proizvoda poljoprivrede, šumarstva i ribarstva.....	38
<b>UGOSTITELJSTVO</b>	
Promet u ugostiteljstvu.....	39
<b>TURIZAM</b>	
Dolasci i noćenja turista po zemljama i vrsti mjesta .....	40
Dolasci i noćenja gostiju po vrstama turističkih mjesta .....	41
Broj dolazaka i noćenja turista.....	41
<b>SAOBRAĆAJ, SKLADIŠTENJE I VEZE</b>	
Željeznički saobraćaj.....	42
Drumski saobraćaj.....	43
Vazdušni saobraćaj .....	44
Pomorski saobraćaj .....	45
PTT saobraćaj.....	45
<b>MONETARNI AGREGATI I PLATNI BILANS</b> .....	
46	
<b>METODOLOŠKA OBJAŠNJENJA</b> .....	
49	

**CONTENTS**

<b>INTRODUCTION</b> .....	3
<b>CONTENTS</b> .....	5
<b>SUMMARY OF INDICES</b>	
Quarterly indices .....	7
Monthly indices .....	8
<b>POPULATION</b>	
Natural population changes .....	10
Natural population changes by municipality .....	11
Migrations inside Montenegro by municipality .....	12
<b>EMPLOYMENT AND WAGES</b>	
Employees by activity sectors .....	13
Employees by municipality .....	14
Unemployed persons .....	45
Average wages by activity sectors .....	16
Average wages without taxes and contributions by activity sector .....	17
Indices of average wages by activity sector .....	18
Indices of average wages without taxes and contributions by activity sector .....	19
Average wages by municipality .....	20
Average wages without taxes and contributions by municipality .....	21
<b>PRICES</b>	
Producers price indices for industrial products .....	22
Retail prices index .....	24
Retail prices index by groups of products .....	25
Costs of living index .....	26
<b>FORESTRY</b>	28
<b>INDUSTRY</b>	
Indices of industrial production by sectors .....	29
Indices of industrial production by subsectors .....	30
<b>CONSTRUCTION</b>	
Value of finalized and ordered works, number of employees and finalized effective hours.....	32
<b>EXTERNAL TRADE</b>	
Exports and imports by countries of destination – origin .....	33
Exports and imports of goods .....	34
<b>DOMESTIC TRADE</b>	
Turnover in retail trade .....	37
Sale and buying out of products from agriculture, forestry and fishery .....	38
<b>CATERING</b>	
Turnover in catering .....	39
<b>TOURISM</b>	
Tourist arrivals and tourist overnight stays by country and type of resort .....	40
Tourist arrivals and tourist overnight stays by type of resort .....	41
Tourist arrivals and tourist overnight stays .....	41
<b>TRANSPORT, STORAGE AND COMMUNICATIONS</b>	
Railway transport .....	42
Road transport .....	43
Air transport .....	44
Marine transport .....	45
Postal, telegraph and telephone (PTT) communications .....	45
<b>MONETARY AGGREGATES AND BALANCE OF PAYMENTS</b>	46
<b>METHODOLOGICAL EXPLANATION</b> .....	49

## OPŠTI PREGLED INDEKSA / SUMMARY OF INDICES

## Kvartalni indeksi / Quarterly indices

	Kvartali / Quarters Ø 2007 = 100							
	2007 2006	IV 2007 Ø 2007	I 2008 Ø 2007	II 2008 Ø 2007	III 2008 Ø 2007	II 2008 I 2008	III 2008 II 2008	
<b>STANOVNIŠTVO <sup>1)</sup></b>								<b>POPULATION <sup>1)</sup></b>
Živorodeni	105.0	109.4	91.2	94.9	117.0	104.0	122.2	Liveborn
Umrli	98.0	102.2	93.6	92.3	92.6	98.6	102.6	Deaths
Prirodni priraštaj	131.6	129.7	84.6	102.5	195.8	121.1	172.3	Natural increase
Zaključeni brakovi	123.1	127.9	59.0	80.5	109.4	136.4	135.9	Marriages
Razvedeni brakovi	97.9	92.2	53.9	106.1	84.3	196.8	79.5	Divorces
<b>ZAPOSLENOST I ZARADE</b>								<b>EMPLOYMENT AND EARNINGS</b>
Broj zaposlenih	103.7	101.1	103.2	106.2	107.7	102.9	101.3	Number of employees
Lica koja traže zaposlenje	79.6	91.9	91.1	86.6	82.4	95.0	95.2	Persons looking for employment
Nominalne zarade bez poreza i doprinosa	119.9	108.2	116.3	122.2	100.0	105.1	102.4	Nominal wages without taxes and contributions
Realne zarade bez poreza i doprinosa	115.1	104.2	105.0	112.3	90.8	102.4	101.2	Real wages without taxes and contributions
<b>CIJENE</b>								<b>PRICES</b>
Cijene proizvođača ind.proizvoda	108.5	103.5	107.8	113.6	118.8	105.3	104.6	Produc. price ind. for ind.prod.
Ukupan indeks cijena na malo	104.2	103.4	105.9	108.8	111.6	102.7	108.7	Total retail price index
Poljoprivredni proizvodi	109.0	106.7	114.4	122.1	111.2	106.6	104.3	Agricultural products
Industrijski proizvodi	94.0	103.0	104.4	107.0	110.3	102.6	108.2	Industrial products
<b>Troškovi života</b>	104.2	103.8	105.0	108.8	110.1	102.6	107.3	<b>Cost of living</b>
<b>INDUSTRIJA</b>								<b>INDUSTRY</b>
Indeksi fizičkog obima	100.1	115.6	107.1	89.6	98.6	83.7	110.0	Indices of physical scope
<b>GRADEVINARSTVO <sup>1)</sup></b>								<b>CONSTRUCTION <sup>1)</sup></b>
Vrijednost izvedenih građevinskih radova	96.8	121.6	96.0*	162.0*	168.7	168.8*	104.1	Value of performed construction works
Izvršeni efektivni časovi na gradilištu	98.3	106.5	106.5*	124.4*	129.3	116.8*	103.9	Performed effective hours at the construction site
<b>SPOLJNA TRGOVINA</b>								<b>EXTERNAL TRADE</b>
Izvoz	95.8	104.1	65.9	87.6	80.7	132.8	92.1	Export
Uvoz	156.3	145.6	88.9	117.3	119.9	131.9	102.2	Import
<b>UNUTRAŠNJA TRGOVINA</b>								<b>DOMESTIC TRADE</b>
Promet u trgovini na malo	140.8	116.2	91.7	124.9	152.7	135.9	122.2	Turnover in retail trade
<b>UGOSTITELJSTVO</b>	105.6	48.0	36.4	103.2	227.0	283.4	219.9	<b>CATERING</b>
<b>TURIZAM</b>								<b>TOURISM</b>
Posjete turista	119	23.5	23.3	81.5	284.7	349.8	349.3	Visits of tourists
Noćenja turista	123	14.2	16.8	72.5	313.5	431.5	432.4	Overnight stays of tourists
<b>SAOBRAĆAJ, SKLADIŠTENJE I VEZE</b>								<b>TRANSPORT, STORAGE AND COMMUNICATIONS</b>
Drumski-prevoz robe	126.3	105.5	158.2	172.9	137.4	109.3	79.5	Road - transport of goods
Prevoz putnika	123.1	90.5	79.5	80.4	106.5	101.1	132.5	Transport of passengers
Željeznički – prevoz robe	101.5	95.0	87.3	101.6	99.7	116.4	98.1	Railway - transport of goods
Prevoz putnika	83.7	74.5	81.8	110.9	163.6	135.6	147.5	Transport of passengers
Vazdušni – prevoz robe	123.7	98.5	167.1	110.3	78.9	66.0	71.5	Air – transport of goods
Prevoz putnika	122.9	63.0	55.6	118.1	197.6	212.4	167.3	Transport of passengers
Pomorski– Prevoz robe – t milje	107.3	68.5	59.8	58.8	164.7	100.4	274.5	Marine- transport of goods – t miles

<sup>1)</sup> Prethodni podaci za III kvartal<sup>1)</sup> Preliminary data



## OPŠTI PREGLED INDEKSA / SUMMARY OF INDICES

## Mjesečni indeksi / Monthly indices

	2007 2006	I-XI 2008 I-XI 2007	XI 2008 X 2008	Ø 2007 = 100				
				XI	XII	I	II	III
<b>STANOVNIŠTVO <sup>1)</sup></b>								
Živorodeni	105.0	102.5	99.7	101.4	114.4	88.5	94.0	91.2
Umrli	98.0	92.6	91.2	99.7	95.4	91.1	92.5	97.0
Prirodni priraštaj	131.6	133.7	120.6	106.2	168.6	81.1	98.0	74.7
Zaključeni brakovi	123.1	94.7	81.6	121.9	148.7	51.5	54.1	71.5
Razvedeni brakovi	97.9	77.3	66.7	36.5	167.0	33.9	65.2	62.6
<b>ZAPOSLENOST I ZARADE</b>								
Broj zaposlenih	103.7	106.3	100.3	100.9	101.8	102.6	103.0	104.0
Lica koja traže zaposlenje	79.6	85.4	99.9	92.4	91.5	91.0	91.5	90.9
Nominalne zarade bez poreza i doprinosa	119.9	123.7	101.2	108.3	111.2	114.2	118.0	116.9
Realne zarade bez poreza i doprinosa	115.1	113.9	101.4	104.1	106.6	107.9	113.3	109.8
<b>CIJENE</b>								
Cijene proizvođača industrijskih proizv.	108.5	114.6	99.2	102.7	104.0	106.2	107.1	110.1
Ukupan indeks cijena na malo	104.2	109.4	99.2	103.7	103.9	105.4	105.9	106.3
Poljoprivredni proizvodi	109.0	110.1	99.3	105.0	110.0	112.8	114.0	116.7
Industrijski proizvodi	104.0	108.0	98.9	103.3	103.5	104.2	104.2	104.6
<b>Troškovi života</b>	104.2	108.6	99.8	104.0	104.3	105.8	106.0	106.4
<b>ŠUMARSTVO</b>								
Indeksi fizičkog obima	80.6	108.1	54.5	76.6	54.6	26.6	46.6	45.4
<b>INDUSTRIJA</b>								
Indeksi fizičkog obima	100.1	100.1	112.6	111.7	118.4	95.6	115.6	110.1
<b>SPOLJNA TRGOVINA</b>								
Izvoz	95.5	...	...	63.7	67.5	67.5	69.3	61.4
Uvoz	156.3	...	...	82.9	89.3	70.1	94.3	102.3
<b>UNUTRAŠNJA TRGOVINA</b>								
Promet robe na malo	140.8	...	...	105.7	126.4	78.1	93.6	107.2
Prodaja i otkup proizvoda poljoprivrede, šumarstva i ribarstva	107.1	124.3	73.8	95.8	120.9	48.9	57.9	63.2
<b>UGOSTITELJSTVO</b>								
Promet u ugostiteljstvu	105.6	104.3	59.6	37.1	42.2	34.0	35.0	40.0
<b>TURIZAM</b>								
Posjete turista	118.9	105.0	51.6	16.3	18.9	21.2	25.5	23.2
Noćenja turista	123.3	106.8	54.2	9.1	10.2	16.1	16.9	17.5
<b>SAOBRAĆAJ, SKLADIŠT. I VEZE</b>								
Drumski – prevoz robe	173.4	152.0	99.9	107.8	107.1	154.2	137.0	182.8
Prevoz putnika	92.6	87.0	98.0	91.1	90.2	76.9	77.9	83.9
Željeznički – prevoz robe	85.1	99.0	101.7	89.7	100.6	73.7	81.8	106.3
Prevoz putnika	115.2	108.8	107.7	65.7	81.2	76.3	76.4	92.7
Vazdušni - prevoz putnika	120.6	109.2	74.3	54.6	60.3	55.2	50.6	61.1
Pomorski- prevoz robe – t milje	107.3	86.6	90.4	70.5	58.8	55.8	64.7	61.7

<sup>1)</sup> Prethodni podaci

OPŠTI PREGLED INDEKSA/ **SUMMARY OF INDICES**Mjesečni indeksi / *Monthly indices*

2008 / Ø 2007								
IV	V	VI	VII	VIII	IX	X	XI	
								<b>POPULATION <sup>1)</sup></b>
81.2	97.9	105.6	112.6	110.9	126.5	110.7	110.4	<i>Liveborn</i>
82.3	96.2	98.3	101.6	91.7	88.7	103.2	94.1	<i>Deaths</i>
78.2	102.7	126.6	144.1	167.5	248.4	135.2	163.0	<i>Natural increase</i>
55.7	96.3	89.5	96.0	133.5	98.8	107.3	87.5	<i>Marriages</i>
122.6	54.8	140.9	70.4	47.0	135.7	79.5	53.0	<i>Divorces</i>
								<b>EMPLOYMENT AND EARNINGS</b>
103.8	105.8	108.8	108.0	107.7	107.2	107.8	108.1	<i>Number of employees</i>
88.0	87.3	84.6	83.3	81.7	82.2	83.3	83.3	<i>Persons looking for employment</i>
								<i>Nominal wages without taxes and contributions</i>
118.9	121.6	125.7	123.1	126.0	127.0	125.1	126.6	<i>Real wages without taxes and contributions</i>
110.4	111.9	114.3	112.4	115.6	114.4	112.7	114.4	
								<b>PRICES</b>
110.7	111.9	118.1	118.3	119.7	118.5	118.4	117.5	<i>Produc. price ind. for ind. prod.</i>
107.1	108.1	111.1	111.2	111.3	112.2	111.9	111.0	<i>Total retail price index</i>
122.6	125.5	118.2	113.0	110.1	110.6	109.2	108.4	<i>Agricultural products</i>
105.3	106.1	109.6	110.1	110.0	110.8	110.5	109.2	<i>Industrial products</i>
107.7	108.7	110.0	109.5	109.9	111.0	111.0	110.7	<i>Costs of living</i>
								<b>FORESTRY</b>
64.5	88.3	84.9	125.7	174.9	215.7	236.1	128.7	<i>Indices of physical scope</i>
								<b>INDUSTRY</b>
91.1	84.1	93.7	91.7	94.4	109.8	92.1	103.7	<i>Indices of physical scope</i>
								<b>EXTERNAL TRADE</b>
86.4	79.5	97.3	85.1	78.6	78.6	76.5	...	<i>Export</i>
105.9	116.3	129.6	131.1	110.4	117.9	103.9	...	<i>Import</i>
								<b>INTERNAL TRADE</b>
111.0	121.0	142.8	152.4	153.6	152.1	124.8	...	<i>Turnover of retail trade goods</i>
74.8	71.5	129.4	149.6	244.6	169.7	190.9	141.0	<i>Sales and buy out of products in agriculture, forestry and fishing</i>
								<b>CATERING</b>
53.4	120.9	135.2	207.4	253.3	220.5	67.3	40.1	<i>Turnover in catering</i>
								<b>TOURISM</b>
38.5	79.6	126.4	330.5	392.0	131.6	36.3	19.0	<i>Visits of tourists</i>
30.9	59.8	126.8	339.8	464.6	136.1	29.6	16.1	<i>Overnight stays of tourists</i>
								<b>TRANSPORT, STORAGE AND COMMUNIC.</b>
207.2	151.9	159.5	135.6	140.3	136.1	128.5	128.5	<i>Road - transport of goods</i>
78.1	78.6	84.4	116.9	115.6	87.0	84.4	82.8	<i>Transport of passengers</i>
103.8	103.8	97.3	97.3	105.7	95.9	110.1	111.9	<i>Railway - transport of goods</i>
92.7	87.3	152.7	201.8	180.0	109.1	70.9	76.4	<i>Transport of passengers</i>
86.1	108.7	159.5	203.6	225.6	163.6	75.0	55.7	<i>Air - transport of passengers</i>
58.8	64.7	55.8	197.0	164.7	132.3	67.6	64.7	<i>Marine- transport of goods - t miles</i>

<sup>1)</sup> Preliminary data

**PRIRODNO KRETANJE STANOVNIŠTVA**  
**NATURAL POPULATION CHANGES**

**Crna Gora / Montenegro**

	Živorodeni <i>Live births</i>			Umrli <i>Deaths</i>			Vitalni indeks  <i>Vital index</i>	Prirodni priraštaj  <i>Natural increase</i>	Brakovi / <i>Marriages</i>	
	<i>ukupno</i> <i>Total</i>	<i>muško</i> <i>Male</i>	<i>žensko</i> <i>Female</i>	<i>ukupno</i> <i>Total</i>	<i>muško</i> <i>Male</i>	<i>žensko</i> <i>Female</i>			<i>sklopljeni</i> <i>New marriages</i>	<i>razvedeni</i> <i>Divorces</i>
2003	8344	4349	3995	5704	2895	2809	1.46	2640	4050	494
2004	7849	4030	3819	5707	3011	2696	1.38	2142	3440	505
2005	7352	3883	3469	5839	3082	2757	1.26	1513	3291	499
2006	7531	3969	3562	5968	3092	2876	1.26	1563	3462	470
2007	7834	4136	3698	5979	3048	2931	1.31	1855	4005	453
Ø I - XI 2007	658	348	310	499	257	243	1.32	158	317	39
Ø I - XI 2008	674	352	322	462	241	221	1.46	212	300	30
2007										
XI	659	355	304	458	230	228	1.44	201	394	36
XII	600	313	287	488	226	262	1.23	112	518	25
2008 <sup>1)</sup>										
I	583	301	282	444	247	197	1.31	139	183	13
II	619	317	302	451	217	234	1.37	168	192	25
III	601	308	293	473	234	239	1.27	128	254	24
IV	535	292	243	401	213	188	1.33	134	198	47
V	645	347	298	469	253	216	1.38	176	342	21
VI	696	375	321	479	245	234	1.45	217	318	54
VII	742	408	334	495	271	224	1.50	247	341	27
VIII	724	379	345	447	223	224	1.62	277	474	18
IX	826	438	388	442	229	213	1.87	384	351	52
X	723	367	356	514	288	226	1.41	209	358	30
XI	721	344	377	469	231	238	1.54	252	292	20
I - XI 2008/ I - XI 2007	102.5	101.4	103.8	92.6	93.9	91.2	-	133.7	94.7	77.3

<sup>1)</sup> Prethodni podaci

<sup>1)</sup> Preliminary data

**PRIRODNO KRETANJE STANOVNIŠTVA PO OPŠTINAMA**  
**NATURAL POPULATION CHANGES BY MUNICIPALITY**  
**I - XI – 2008.<sup>1)</sup>**

	Živorodeni / Live births			Umrli / Deaths			Vitalni indeks <i>Vital index</i>	Prirodni priraštaj <i>Natural increase</i>	Brakovi / Marriages	
	ukupno <i>Total</i>	muški <i>Male</i>	ženski <i>Female</i>	ukupno <i>Total</i>	muški <i>Male</i>	ženski <i>Female</i>			sklopljeni <i>New marriages</i>	razvedeni <i>Divorces</i>
<b>CRNA GORA MONTENEGRO</b>	<b>7415</b>	<b>3876</b>	<b>3539</b>	<b>4570</b>	<b>2363</b>	<b>2207</b>	<b>1.62</b>	<b>2845</b>	<b>3303</b>	<b>331</b>
ANDRIJEVICA	42	20	22	42	17	25	1.00	0	14	0
BAR	472	254	218	288	145	143	1.64	184	230	5
BERANE	436	225	211	260	140	120	1.68	176	184	20
BIJELO POLJE	692	357	335	355	176	179	1.95	337	304	17
BUDVA	248	123	125	79	41	38	3.14	169	72	14
DANILOVGRAD	141	70	71	155	93	62	0.91	-14	54	11
ŽABLJAK	24	15	9	35	19	16	0.69	-11	10	2
KOLAŠIN	76	41	35	107	60	47	0.71	-31	32	0
KOTOR	239	124	115	175	88	87	1.37	64	103	11
MOJKOVAC	69	34	35	74	34	40	0.93	-5	32	2
NIKŠIĆ	814	445	369	566	303	263	1.44	248	345	33
PLAV	137	68	69	106	52	54	1.29	31	75	0
PLUŽINE	48	23	25	45	21	24	1.07	3	20	2
PLJEVLJA	244	124	120	309	170	139	0.79	-65	140	21
PODGORICA	2510	1305	1205	1142	577	565	2.20	1368	1045	75
ROŽAJE	413	218	195	117	63	54	3.53	296	196	46
TIVAT	149	85	64	87	43	44	1.71	62	66	4
ULCINJ	228	114	114	140	72	68	1.63	88	126	19
HERCEG NOVI	288	154	134	269	151	118	1.07	19	158	43
CETINJE	132	73	59	200	87	113	0.66	-68	87	5
ŠAVNIK	13	4	9	19	11	8	0.68	-6	10	1

<sup>1)</sup> Prethodni podaci<sup>1)</sup> Preliminary data

**KRETANJE STANOVNIŠTVA UNUTAR CRNE GORE PO OPŠTINAMA**  
**MIGRATIONS INSIDE MONTENEGRO BY MUNICIPALITY**  
**I – XI 2008<sup>1)</sup>**

<b>OPŠTINE / MUNICIPALITIES</b>	<b>DOSELJENI / MOVED IN</b>	<b>ODSELJENI / MOVED OUT OF</b>	<b>SALDO / BALLANCE</b>
<b>UKUPNO / TOTAL</b>	<b>3195</b>	<b>3195</b>	<b>0</b>
ANDRIJEVICA	31	52	-21
BAR	556	179	377
BERANE	166	336	-170
BIJELO POLJE	154	470	-316
BUDVA	164	86	78
DANILOVGRAD	224	103	121
ŽABLJAK	28	51	-23
KOLAŠIN	36	91	-55
KOTOR	32	93	-61
MOJKOVAC	35	88	-53
NIKŠIĆ	243	338	-95
PLAV	36	84	-48
PLUŽINE	9	77	-68
PLJEVLJA	36	184	-148
PODGORICA	960	439	521
ROŽAJE	38	145	-107
TIVAT	158	54	104
ULCINJ	125	58	67
HERCEG NOVI	107	96	11
CETINJE	54	96	-42
ŠAVNIK	3	75	-72

<sup>1)</sup> Prethodni podaci<sup>1)</sup> Preliminary data

**ZAPOSLENI PO SEKTORIMA DJELATNOSTI**  
**EMPLOYEES BY ACTIVITY SECTORS**

	Ukupno <i>Total</i>	PO SEKTORIMA / <i>BY ACTIVITY SECTORS</i>						
		poljoprivreda šumarstvo i vodoprivreda <i>Agriculture, forestry and water supply</i>	ribarstvo <i>Fishing</i>	vadenje ruda i kamena <i>Mining and quarrying</i>	prerađivačka industrija <i>Manufacturing</i>	proizvodnja elekt. energije <i>Electricity supply</i>	građevinarstvo <i>Constru- ction</i>	trgovina na veliko i malo, opravka <i>Wholesale and retail trade, repair</i>
Ø 2006	150800	2607	115	4159	26065	5627	6853	29602
Ø 2007	156408	2586	112	3753	25697	5594	6647	30750
Ø I - XI 2007	156152	2591	112	3759	25796	5574	6555	30750
Ø I - XI 2008	165953	2643	129	3716	24387	6031	8754	31849
2007								
XI	157739	2526	117	3686	24446	5787	7472	30731
XII	159223	2527	117	3686	24608	5819	7662	30750
2008								
I	160450	2587	127	3696	24811	5859	7724	30974
II	161105	2587	127	3696	24816	5859	7764	31130
III	162737	2597	129	3706	25015	5954	7958	31384
IV	162307	2588	129	3706	23762	5954	8198	31524
V	165955	2638	129	3706	24256	6024	8573	32203
VI	170146	2678	129	3736	24554	6129	9218	32637
VII	168916	2678	129	3726	24237	6129	9143	32141
VIII	168488	2681	129	3726	24250	6119	9161	32005
IX	167722	2681	129	3726	24062	6109	9211	32029
X	168583	2681	129	3726	24089	6085	9693	32158
XI	169079	2681	129	3726	24405	6125	9653	32149
<b>I-XI 2008/I-XI 2007</b>	<b>106.3</b>	<b>114.9</b>	<b>115.2</b>	<b>98.8</b>	<b>94.5</b>	<b>108.2</b>	<b>133.6</b>	<b>103.6</b>

/nastavak/

/ continued /

	PO SEKTORIMA / <i>BY ACTIVITY SECTORS</i>							
	hoteli i restorani <i>Hotels and restaurants</i>	saobraćaj, skladištenje i veze <i>Transport, storage and communi-cations</i>	financijsko posredovanje <i>Financial activities</i>	aktivnosti u vezi s nekretnostima <i>Real estate activities, renting</i>	državna uprava i obav. socijalno osiguranje <i>Public administration and social insurance</i>	obrazo- vanje <i>Education</i>	zdravstveno i socijalno osiguranje <i>Health and social work</i>	ostale komu- nalne, društ. i lične usluge <i>Other community, social &amp; pers. service activities</i>
Ø 2006	10928	12133	3114	5905	10345	12846	12012	8489
Ø 2007	11307	11358	3143	5354	17575	12687	12004	7841
Ø I - XI 2007	11223	11326	3123	5346	17504	12673	11993	7828
Ø I - XI 2008	14562	12739	3469	5606	18635	12892	12340	8200
2007								
XI	11959	11514	3306	5376	18074	12771	12070	7904
XII	12237	11708	3365	5436	18359	12840	12125	7984
2008								
I	12455	11925	3413	5441	18403	12845	12156	8034
II	12676	12033	3423	5441	18451	12863	12195	8044
III	12887	12304	3447	5482	18521	12938	12299	8116
IV	13187	12395	3447	5492	18546	12930	12291	8158
V	14268	12925	3487	5547	18645	12990	12311	8253
VI	16241	13198	3497	5663	18743	13026	12389	8308
VII	16200	13037	3477	5643	18766	12766	12377	8257
VIII	16178	12960	3478	5640	18749	12784	12408	8220
IX	15628	12945	3478	5640	18674	12795	12397	8218
X	15278	13117	3493	5840	18705	12815	12480	8294
XI	15188	13293	3518	5840	18781	12850	12440	8301
<b>I-XI 2008/I -XI 2007</b>	<b>129.8</b>	<b>112.5</b>	<b>111.1</b>	<b>104.9</b>	<b>106.5</b>	<b>101.7</b>	<b>102.9</b>	<b>104.8</b>

## ZAPOSLENI PO OPŠTINAMA / EMPLOYEES BY MUNICIPALITY

	Opštine / Municipalities										
	Andrijevica	Bar	Berane	Bijelo Polje	Budva	Danilovgrad	Žabljak	Kolašin	Kotor	Mojkovac	Nikšić
Ø 2006	540	11105	5218	7316	9308	2541	805	1410	5547	1495	17616
Ø 2007	528	11125	5803	8060	8323	2496	937	1591	5983	1503	17481
Ø I - XI 2007	527	11106	5802	8045	8343	2470	933	1590	5978	1499	17459
Ø I - XI 2008	537	11878	6093	8614	8967	2962	981	1720	6369	1630	18281
2007											
XI	541	11209	5922	8248	8108	2652	928	1591	6074	1536	17561
XII	541	11336	5818	8218	8096	2775	977	1603	6038	1544	17730
2008											
I	535	11451	5896	8206	8072	2779	936	1613	6144	1535	17851
II	539	11395	5885	8267	8110	2844	955	1624	6135	1540	17907
III	543	11643	5980	8353	8309	2870	966	1652	6307	1553	18065
IV	543	11609	6047	8463	8596	2935	897	1668	6303	1573	18099
V	545	11947	6057	8897	9005	2987	1054	1726	6343	1653	18179
VI	533	12545	6680	8854	9830	3015	1013	1772	6584	1675	18443
VII	530	12280	6108	8697	9822	2998	981	1745	6493	1665	18376
VIII	532	12165	6145	8646	9725	2999	1016	1748	6482	1668	18345
IX	533	11839	6060	8826	9459	3031	1002	1768	6327	1666	18366
X	533	11886	6057	8745	8940	3054	990	1799	6458	1678	18653
XI	537	11898	6113	8801	8764	3065	986	1809	6479	1720	18804
I-XI 2008/I-XI 2007	101.9	106.9	105.0	107.1	107.5	119.9	105.1	108.2	106.5	108.7	104.7

/nastavak/

/ continued /

Nastavak	Opštine / Municipalities									
	Plav	Plužine	Pljevlja	Podgorica	Rožaje	Tivat	Ulcinj	Herceg Novi	Cetinje	Šavnik
Ø 2006	1470	913	7233	53103	3292	2940	3994	10130	4545	279
Ø 2007	1425	952	7100	56118	3148	3632	3873	11149	4890	291
Ø I - XI 2007	1426	952	7100	55907	3173	3641	3867	11158	4883	293
Ø I - XI 2008	1414	938	7285	60827	3059	3751	4178	11763	4411	297
2007										
XI	1418	945	7016	57430	2866	3391	3972	11098	4965	278
XII	1416	949	7105	58431	2876	3536	3941	11055	4962	276
2008										
I	1434	949	7199	58816	2893	3555	3971	11271	5063	281
II	1435	889	7216	59276	2950	3558	4011	11259	5024	282
III	1437	913	7249	59588	2970	3526	4070	11369	5090	284
IV	1410	905	7191	60033	3006	3521	4021	11277	3925	285
V	1432	918	7244	60673	3080	3675	4105	11737	4395	303
VI	1438	955	7421	61071	3163	3915	4411	12387	4140	301
VII	1399	961	7300	61336	3123	4009	4357	12245	4173	318
VIII	1397	958	7306	61350	3105	3970	4279	12150	4183	319
IX	1407	963	7338	61228	3116	3922	4205	12175	4179	312
X	1384	943	7312	62668	3118	3797	4255	11852	4160	301
XI	1380	965	7357	63058	3121	3808	4275	11672	4187	280
I -XI 2008/I - XI 2007	99.2	98.5	102.6	108.8	96.4	103.0	108.0	105.4	90.3	101.4

NEZAPOSLENA LICA <sup>1)</sup> / UNEMPLOYED PERSONS

	Stanje krajem perioda / Situation at the end of the period					U toku perioda / In the middle of the period			
	lica koja traže zaposlenje <sup>2)</sup> ukupno <i>Persons looking for job Total</i>	nezaposlena lica koja prvi put traže zaposlenje <i>Unemployed persons first time looking for job</i>	nezaposlena lica bez kvalifikacija <i>Unqualified unemployed persons</i>	lica koja primaju novčanu naknadu <sup>3)</sup> <i>Persons receiving unemployment benefits</i>	nezaposlene žene <i>unemployed women</i>		prijavilo se za zapošljavanje <sup>4)</sup> <i>Reported for employment</i>	zaposleni prema evidenciji Zavoda za zapošljavanje Crne Gore <i>Employees according to the records of Employment Agency of Montenegro</i>	prestanak vođenja evidencije <sup>5)</sup> <i>Records stopped to be kept</i>
					Svega <i>Total</i>	bez kvalifikacija <i>Unqualified</i>			
Ø 2006	43190	14855	11550	7833	19949	4720	31561	23463	42969
Ø 2007	34396	10069	8838	8654	15513	3414	26263	31897	34933
2006									
XI	38892	12224	10213	8274	17839	4153	2663	1995	2649
XII	38876	12067	10148	8498	17719	4097	2399	1815	2542
2007									
I	39104	12030	10154	8220	17815	4104	2590	1618	2398
II	39155	12131	10236	8398	17757	4090	2591	2229	2645
III	38714	11943	10088	8420	17575	4027	2304	2445	2836
IV	37571	11521	9800	8352	17003	3828	1942	2319	3139
V	35356	10651	9198	8313	15920	3558	1744	3049	4057
VI	33393	9885	8636	8260	14912	3279	1687	4434	3841
VII	32205	9350	8196	8530	14426	3117	2114	3698	3529
VIII	31271	8931	7897	9433	14124	2990	1644	2063	2629
IX	31156	8737	7840	8592	14080	2961	2328	2289	2568
X	31569	8673	7994	8917	14253	3020	2961	2679	2591
XI	31787	8579	8021	9203	14279	3022	2616	2808	2465
XII	31469	8388	7994	9206	14017	2966	1722	2266	2235
2008									
I	31323	8137	8056	9222	13864	2938	1947	1853	2139
II	31469	8228	8075	9432	13954	2945	2176	2662	2211
III	31258	8047	8088	9661	13764	2903	2105	2614	2531
IV	30270	7655	7890	9865	13348	2866	1601	2261	2741
V	30021	7739	8149	9630	13276	3034	2639	2366	2847
VI	29088	7444	7966	9416	12922	2998	1787	3147	2776
VII	28660	6997	7758	7024	12840	2939	1868	3482	2272
VIII	28117	6789	7505	9826	12721	2830	1457	2465	2028
IX	28276	6976	7510	8877	12892	2883	2519	2389	2318
X	28666	6943	7593	10125	13064	2894	2855	1489	2435
XI	28645	6885	7629	10537	12913	2932	2136	1421	2156
I - XI 2008/I- XI 2007	85.4	72.8	87.9	109.5	84.6	84.6	94.5	88.2	80.9

<sup>1)</sup> IZVOR: Zavod za zapošljavanje Crne Gore<sup>2)</sup> Shodno članu 4 Zakona o zapošljavanju („Sl.list RCG”, br. 5/02 )<sup>3)</sup> Shodno članu 48 Zakona o zapošljavanju<sup>4)</sup> Nezaposlene osobe koje su se tokom izvještajnog mjeseca prijavile na evidenciju Zavoda za zapošljavanje<sup>5)</sup> Shodno članu 86 Zakona o zapošljavanju<sup>1)</sup> SOURCE: Employment Agency of Montenegro<sup>2)</sup> According to the article 4 of the Law on Employment („Official Gazette of RoM”, No. 5/02 and 79/04)<sup>3)</sup> According to the Article 48 of the Law on Employment<sup>4)</sup> Unemployed persons who in the reference month reported to the records of the Employment Agency of Montenegro<sup>5)</sup> According to the Article 86 of the Law on Employment



**PROSJEČNE ZARADE PO SEKTORIMA DJELATNOSTI**  
**AVERAGE WAGES BY ACTIVITY SECTORS**

u EUR		in EUR						
	Ukupno <i>Total</i>	PO SEKTORIMA / BY ACTIVITY SECTORS						
		poljop. šumarstvo i vodoprivreda <i>Agriculture, forestry and water supply</i>	ribarstvo <i>Fishing</i>	vadenje ruda i kamena <i>Mining and quarrying</i>	prerađivačka industrija <i>Manufacturing</i>	proizvodnja električne energije <i>Electricity supply</i>	građevinarstvo <i>Construc- tion</i>	trgovina na veliko i malo, opravka <i>Wholesale and retail trade, repair</i>
Ø 2007	497	446	196	725	530	701	430	301
Ø I - XI 2007	492	436	197	721	530	698	419	293
Ø I - XI 2008	605	576	197	833	612	782	517	341
2007								
XI	539	477	165	748	546	701	446	299
XII	554	547	184	771	527	729	547	367
2008								
I	564	587	241	828	569	707	468	321
II	584	540	165	773	568	765	505	318
III	578	511	190	777	552	732	465	321
IV	588	528	176	791	554	734	493	335
V	602	541	192	785	631	763	530	326
VI	623	569	158	839	694	806	518	347
VII	610	590	226	822	617	806	552	347
VIII	625	601	211	900	605	835	564	356
IX	630	592	199	906	673	792	527	360
X	621	642	195	879	617	825	539	354
XI	629	626	214	881	660	838	517	356
I - XI 2008/I - XI 2007	123.0	132.1	100.0	115.5	115.5	112.0	123.4	116.4

/nastavak/

/ continued /

	PO SEKTORIMA / BY ACTIVITY SECTORS							
	hoteli i restorani <i>Hotels and restaurants</i>	saobraćaj, skladišt. i veze <i>Transport, storage and communi- cations</i>	finansijsko posredovanje <i>Financial activities</i>	aktivnosti u vezi s nekretninama <i>Real estate activities, renting</i>	državna uprava i obav. socijalno osiguranje <i>Public administration and social insurance</i>	obrazo- vanje <i>Education</i>	zdravstveno i socijalno osiguranje <i>Health and social work</i>	ostale komunalne, društvene i lične usluge <i>Other community, social &amp; personal service activities</i>
Ø 2007	388	659	1156	438	506	433	427	431
Ø I - XI 2007	384	652	1140	429	503	424	419	427
Ø I - XI 2008	441	750	1259	523	666	570	571	528
2007								
XI	416	795	1318	453	534	518	501	463
XII	432	728	1318	530	540	529	511	477
2008								
I	369	680	1179	487	595	543	522	490
II	422	679	1328	495	647	566	536	518
III	407	700	1256	472	649	580	525	500
IV	457	746	1300	490	659	576	531	497
V	422	724	1251	514	680	576	544	541
VI	455	776	1330	536	670	580	555	538
VII	448	792	1280	566	684	565	547	523
VIII	481	799	1227	544	699	562	629	538
IX	442	794	1259	544	678	566	640	540
X	436	787	1219	535	683	575	622	556
XI	461	753	1223	572	685	575	628	572
I - XI 2008/I - XI 2007	114.8	115.0	110.4	121.9	132.4	134.4	136.3	123.7

**PROSJEČNE ZARADE BEZ POREZA I DOPRINOSA PO SEKTORIMA DJELATNOSTI**  
**AVERAGE WAGES WITHOUT TAXES AND CONTRIBUTIONS BY ACTIVITY SECTOR**

u EUR	in EUR							
	Ukupno <i>Total</i>	PO SEKTORIMA / BY ACTIVITY SECTORS						
		poljoprivreda, šumarstvo i vodoprivreda <i>Agriculture, forestry and water supply</i>	ribarstvo <i>Fishing</i>	vađenje ruda i kamenja <i>Mining and quarrying</i>	prerađivačka industrija <i>Manufacturing</i>	proizvodnja elekt. energije <i>Electricity supply</i>	građevinarstvo <i>Construction</i>	trgovina na veliko i malo, opravka <i>Wholesale and retail trade, repair</i>
Ø 2007	338	305	140	493	358	469	295	208
Ø I - XI 2007	334	298	141	491	358	468	287	203
Ø I - XI 2008	413	392	141	574	416	529	351	239
2007								
XI	366	328	118	507	369	470	306	207
XII	376	376	132	522	356	488	375	254
2008								
I	386	399	168	570	387	479	320	225
II	399	368	119	533	387	518	345	223
III	395	348	137	535	376	495	317	225
IV	402	360	127	544	377	498	336	235
V	411	368	138	540	429	518	361	229
VI	425	387	115	578	472	546	353	244
VII	416	401	162	566	419	546	376	244
VIII	426	409	150	620	410	565	382	250
IX	429	404	142	623	457	536	357	253
X	423	438	140	606	419	558	364	248
XI	428	428	154	608	449	565	349	249
I - XI 2008/I - XI 2007	123.7	131.5	100.0	116.9	116.2	113.0	122.3	117.7

/nastavak/

/ continued /

	PO SEKTORIMA / BY ACTIVITY SECTORS							
	hoteli i restorani <i>Hotels and restaurants</i>	saobraćaj, skladištenje i veze <i>Transport, storage and communications</i>	finansijsko posredovanje <i>Financial activities</i>	aktivnosti u vezi s nekretnostima <i>Real estate activities, renting</i>	državna uprava i obav. socijalno osiguranje <i>Public administration and social insurance</i>	obrazovanje <i>Education</i>	zdravstveno i socijalno osiguranje <i>Health and social work</i>	ostale komunalne, društvene i lične usluge <i>Other community, social &amp; personal service activities</i>
Ø 2007	264	439	770	299	344	295	296	296
Ø I - XI 2007	261	435	759	293	342	289	291	293
Ø I - XI 2008	304	508	848	358	452	387	392	367
2007								
XI	284	527	878	308	363	354	348	318
XII	295	483	880	360	367	361	355	328
2008								
I	254	461	792	334	406	370	357	341
II	253	394	632	294	318	268	273	269
III	279	475	844	324	442	396	360	347
IV	314	506	875	336	448	393	364	345
V	290	491	842	352	462	393	374	376
VI	313	526	895	367	455	395	382	374
VII	309	537	861	387	464	384	376	364
VIII	333	540	828	371	473	381	432	373
IX	306	537	850	371	458	383	439	374
X	301	533	824	365	461	390	427	385
XI	318	510	825	390	463	390	432	396
I - XI 2008/I - XI 2007	116.5	116.8	111.7	122.2	132.2	133.9	134.7	125.3

**INDEKSI PROSJEČNIH ZARADA PO SEKTORIMA DJELATNOSTI**  
**INDICES OF AVERAGE WAGES BY ACTIVITY SECTOR**

Ø 2007=100

	Ukupno <i>Total</i>	PO SEKTORIMA / <i>BY ACTIVITY SECTORS</i>						
		poljoprivreda, šumarstvo i vodoprivreda <i>Agriculture, forestry and water supply</i>	ribarstvo <i>Fishing</i>	vadenje ruda i kamen <i>Mining and quarrying</i>	prerađivačka industrija <i>Manufacturing</i>	proizvodnja električne energije <i>Electricity supply</i>	građevinarstvo <i>Construction</i>	trgovina na veliko i malo, opravka <i>Wholesale and retail trade, repair</i>
Ø 2007	100.0	100.0	100.0	100.0	100.0	100.0	100.0	100.0
Ø I - XI 2007	99.0	97.8	100.5	99.4	100.0	99.6	97.4	97.3
Ø I - XI 2008	121.7	129.1	100.5	114.9	115.5	111.5	120.2	113.3
2007								
XI	108.5	107.0	84.2	103.2	103.0	100.0	103.7	99.3
XII	111.5	122.6	93.9	106.3	99.4	104.0	127.2	121.9
2008								
I	113.5	131.6	123.0	114.2	107.4	100.9	108.8	106.6
II	117.5	121.1	84.2	106.6	107.2	109.1	117.4	105.6
III	116.3	114.6	96.9	107.2	104.2	104.4	108.1	106.6
IV	118.3	118.4	89.8	109.1	104.5	104.7	114.7	111.3
V	121.1	121.3	98.0	108.3	119.1	108.8	123.3	108.3
VI	125.4	127.6	80.6	115.7	130.9	115.0	120.5	115.3
VII	122.7	132.3	115.3	113.4	116.4	115.0	128.4	115.3
VIII	125.8	134.8	107.7	124.1	114.2	119.1	131.2	118.3
IX	126.8	132.7	101.5	125.0	127.0	113.0	122.6	119.6
X	125.0	143.9	99.5	121.2	116.4	117.7	125.3	117.6
XI	126.6	140.5	109.2	121.5	124.5	119.5	120.2	118.3
I - XI 2008/I - XI 2007	123.0	132.1	100.0	115.5	115.5	112.0	123.4	116.4

/nastavak/

/ continued /

	PO SEKTORIMA / <i>BY ACTIVITY SECTORS</i>							
	hoteli i restorani <i>Hotels and restaurants</i>	saobraćaj, skladištenje i veze <i>Transport, storage and communications</i>	finansijско posredovanje <i>Financial activities</i>	aktivnosti u vezi s nekretninama <i>Real estate activities, renting</i>	državna uprava i obav. socijalno osiguranje <i>Public administration and social insurance</i>	obrazo- vanje <i>Education</i>	zdravstveno i socijalno osiguranje <i>Health and social work</i>	ostale komunalne, društvene i lične usluge <i>Other community, social &amp; personal service activities</i>
Ø 2007	100.0	100.0	100.0	100.0	100.0	100.0	100.0	100.0
Ø I - XI 2007	99.0	98.9	98.6	97.9	99.4	97.9	98.1	99.1
Ø I - XI 2008	113.7	113.8	108.9	119.4	131.6	131.6	133.7	122.5
2007								
XI	107.2	120.6	114.0	103.4	105.5	119.6	117.3	107.4
XII	111.3	110.5	114.0	121.0	106.7	122.2	119.7	110.7
2008								
I	95.1	103.2	102.0	111.2	117.6	125.4	122.2	113.7
II	108.8	103.0	114.9	130.0	127.9	130.7	125.5	120.2
III	104.9	106.2	108.7	107.8	128.3	134.0	123.0	116.0
IV	117.8	113.2	112.5	111.9	130.2	133.0	124.4	115.3
V	108.8	109.9	108.2	117.4	134.4	133.0	127.4	125.5
VI	117.3	117.6	115.1	122.4	132.4	134.0	130.0	124.8
VII	115.5	120.2	110.7	129.2	135.2	130.5	128.1	121.3
VIII	124.0	121.2	106.1	124.2	138.1	129.8	147.3	124.8
IX	113.9	120.5	108.9	124.2	134.0	130.7	149.9	125.3
X	112.4	119.4	105.5	122.1	135.0	132.8	145.7	129.0
XI	118.8	114.3	105.8	130.6	135.4	132.8	147.1	132.7
I-XI 2008/I-XI 2007	114.8	115.0	110.4	121.9	132.4	134.4	136.3	123.7

**INDEKSI PROSJEČNIH ZARADA BEZ POREZA I DOPRINOSA PO SEKTORIMA DJELATNOSTI**  
**INDICES OF AVERAGE WAGES WITHOUT TAXES AND CONTRIBUTIONS BY ACTIVITY SECTOR**

Ø 2007=100

	Ukupno <i>Total</i>	PO SEKTORIMA / BY ACTIVITY SECTORS						
		poljoprivreda, šumarstvo i vodoprivreda <i>Agriculture, forestry and water supply</i>	ribarstvo <i>Fishing</i>	vađenje ruda i kamenja <i>Mining and quarrying</i>	prerađivačka industrija <i>Manufacturing</i>	proizvodnja električne energije <i>Electricity supply</i>	gradevi- narstvo <i>Construction</i>	trgovina na veliko i malo opravka <i>Wholesale and retail trade, repair</i>
Ø 2007	100.0	100.0	100.0	100.0	100.0	100.0	100.0	100.0
Ø I - XI 2007	98.8	97.7	100.7	99.6	100.0	99.8	97.3	97.6
Ø I - XI 2008	122.2	128.5	100.7	116.4	116.2	112.8	119.0	114.9
2007								
XI	108.3	107.5	84.3	102.8	103.1	100.2	103.7	99.5
XII	111.2	123.3	94.3	105.9	99.4	104.1	127.1	122.1
2008								
I	114.2	130.8	120.0	115.6	108.1	102.1	108.5	108.2
II	118.0	120.7	85.0	108.1	108.1	110.4	117.0	107.2
III	116.9	114.1	97.9	108.5	105.0	105.5	107.5	108.2
IV	118.9	118.0	90.7	110.3	105.3	106.2	113.9	113.0
V	121.6	120.7	98.6	109.5	119.8	110.4	122.4	110.1
VI	125.7	126.9	82.1	117.2	131.8	116.4	119.7	117.3
VII	123.1	131.5	115.7	114.8	117.0	116.4	127.5	117.3
VIII	126.0	134.1	107.1	125.8	114.5	120.5	129.5	120.2
IX	126.9	132.5	101.4	126.4	127.6	114.3	121.0	121.6
X	125.1	143.6	100.0	122.9	117.0	119.0	123.4	119.2
XI	126.6	140.3	110.0	123.3	125.4	120.5	118.3	119.7
I - XI 2008/I - XI 2007	123.7	131.5	100.0	116.9	116.2	113.0	122.3	117.7

/nastavak/

/ continued /

	PO SEKTORIMA / BY ACTIVITY SECTORS							
	hoteli i restorani <i>Hotels and restaurants</i>	saobraćaj, skladištenje i veze <i>Transport, storage and communications</i>	financijsko posred. <i>Financial activities</i>	aktivnosti u vezi s nekretnostima <i>Real estate activities, renting</i>	državna uprava i obav. socijalno osiguranje <i>Public administration and social insurance</i>	obrazovanje <i>Education</i>	zdravstveno i socijalno osiguranje <i>Health and social work</i>	ostale komunalne, društvene i lične usluge <i>Other community, social &amp; personal service activities</i>
Ø 2007	100.0	100.0	100.0	100.0	100.0	100.0	100.0	100.0
Ø I - XI 2007	98.7	99.1	98.6	98.0	99.4	98.0	98.3	99.0
Ø I - XI 2008	115.2	115.7	110.1	119.7	131.4	131.2	132.4	124.0
2007								
XI	107.6	120.0	114.0	103.0	105.5	120.0	117.6	107.4
XII	111.7	110.0	114.3	120.4	106.7	122.4	119.9	110.8
2008								
I	96.2	105.0	102.9	111.7	118.0	125.4	120.6	115.2
II	109.8	105.0	116.0	113.4	128.2	130.8	124.0	121.6
III	105.7	108.2	109.6	108.4	128.5	134.2	121.6	117.2
IV	118.9	115.3	113.6	112.4	130.2	133.2	123.0	116.6
V	109.8	111.8	109.4	117.7	134.3	133.2	126.4	127.0
VI	118.6	119.8	116.2	122.7	132.3	133.9	129.1	126.4
VII	117.0	122.3	111.8	129.4	134.9	130.2	127.0	123.0
VIII	126.1	123.0	107.5	124.1	137.5	129.2	145.9	126.0
IX	115.9	122.3	110.4	124.1	133.1	129.8	148.3	126.3
X	114.0	121.4	107.0	122.1	134.0	132.2	144.3	130.1
XI	120.5	116.2	107.1	130.4	134.6	132.2	145.9	133.8
I - XI 2008/I - XI 2007	116.5	116.8	111.7	122.2	132.2	133.9	134.7	125.3

## PROSJEČNE ZARADE PO OPŠTINAMA / AVERAGE WAGES BY MUNICIPALITY

u EUR	in EUR										
	Opštine / Municipalities										
	Andrijevica	Bar	Berane	Bijelo Polje	Budva	Danilovgrad	Žabljak	Kolašin	Kotor	Mojkovac	Nikšić
Ø 2007	398	445	407	406	536	419	398	437	498	422	555
Ø I - XI 2007	392	442	403	401	527	414	393	431	493	419	548
Ø I - XI 2008	489	542	528	514	636	509	539	548	607	528	643
2007											
XI	428	461	432	428	583	432	437	488	557	468	594
XII	474	468	448	466	635	460	464	488	547	451	626
2008											
I	512	504	486	504	599	472	559	476	566	529	619
II	470	523	478	491	646	484	553	516	584	484	604
III	475	533	489	491	652	490	502	505	579	512	622
IV	460	550	514	507	684	491	541	545	585	516	617
V	473	517	536	529	653	502	635	553	606	494	630
VI	502	546	553	510	641	506	491	554	621	532	705
VII	492	525	527	516	605	531	594	576	606	610	636
VIII	506	577	565	520	650	532	544	603	620	534	656
IX	492	574	551	535	607	530	551	538	637	518	669
X	505	558	545	528	606	532	499	557	635	529	649
XI	504	555	563	523	655	530	498	615	642	552	661
I - XI 2008/I - XI 2007	124.7	122.6	131.0	128.2	120.7	122.9	137.2	127.1	123.1	126.0	117.3

/nastavak/	/continued/									
	Opštine / Municipalities									
	Plav	Plužine	Pljevlja	Podgorica	Rožaje	Tivat	Ulcinj	Herceg Novi	Cetinje	Šavnik
Ø 2007	376	444	492	548	456	486	354	408	366	420
Ø I - XI 2007	373	442	489	541	450	483	351	406	364	415
Ø I - XI 2008	488	543	610	671	558	573	459	495	433	520
2007										
XI	403	542	524	606	510	566	382	429	379	475
XII	409	462	521	621	513	522	389	433	392	478
2008										
I	430	533	560	622	539	603	406	439	392	519
II	438	547	598	650	554	570	419	492	409	503
III	451	558	576	637	548	569	418	463	402	474
IV	458	470	590	643	540	550	402	498	432	507
V	478	497	592	679	554	570	427	476	395	514
VI	518	509	615	690	549	576	446	524	420	518
VII	515	504	616	694	554	571	452	481	415	520
VIII	538	532	628	688	574	572	667	515	409	529
IX	525	688	640	709	572	575	468	510	413	544
X	521	534	656	682	570	563	464	523	584	544
XI	527	707	641	688	577	586	462	521	583	548
I - XI 2008/I - XI 2007	130.8	122.9	124.7	124.0	124.0	118.6	130.8	121.9	119.0	125.3

**PROSJEČNE ZARADE BEZ POREZA I DOPRINOSA PO OPŠTINAMA**  
**AVERAGE WAGES WITHOUT TAXES AND CONTRIBUTIONS BY ACTIVITY SECTOR**

<b>u EUR</b>	<b>in EUR</b>										
	Opštine / Municipalities										
	Andrijevica	Bar	Berane	Bijelo Polje	Budva	Danilovgrad	Žabljak	Kolašin	Kotor	Mojkovac	Nikšić
Ø 2007	271	302	278	277	361	285	272	296	339	288	377
Ø I - XI 2007	267	300	275	273	355	282	269	293	336	286	373
Ø I - XI 2008	334	369	359	350	435	349	368	373	416	360	439
2007											
XI	293	313	294	292	394	294	297	329	381	319	402
XII	323	318	307	317	429	313	316	331	373	308	423
2008											
I	350	345	335	342	405	325	381	325	389	360	423
II	321	357	325	336	440	333	380	353	399	330	414
III	325	363	327	335	445	338	342	346	396	350	425
IV	315	374	350	345	465	335	370	373	400	347	421
V	325	354	366	360	446	344	430	376	416	337	430
VI	342	365	377	351	437	349	336	377	426	364	486
VII	334	359	358	352	419	369	405	390	415	414	434
VIII	344	393	382	355	444	357	371	408	427	365	449
IX	335	390	378	362	417	362	375	366	433	352	457
X	343	380	369	359	417	363	341	378	433	360	444
XI	344	377	382	356	447	363	341	417	438	376	450
<b>I - XI 2008/I - XI 2007</b>	125.1	123.0	130.5	128.2	122.5	123.8	136.8	127.3	123.8	125.9	117.7

/nastavak/

/ continued /

	Opštine / Municipalities									
	Plav	Plužine	Pljevlja	Podgorica	Rožaje	Tivat	Ulcinj	Herceg Novi	Cetinje	Šavnik
Ø 2007	255	301	334	371	310	331	243	281	251	285
Ø I - XI 2007	253	300	332	367	306	329	240	280	249	282
Ø I - XI 2008	329	373	417	457	380	390	315	341	294	354
2007										
XI	276	365	356	411	346	394	261	294	260	322
XII	279	314	354	421	347	355	266	298	269	325
2008										
I	295	362	381	424	367	410	278	302	269	352
II	297	374	407	444	378	389	288	338	281	346
III	302	380	393	435	375	390	287	320	275	325
IV	312	325	404	439	368	376	277	342	295	346
V	326	342	406	463	378	385	293	329	270	351
VI	348	351	422	471	378	394	307	359	274	355
VII	339	343	422	473	378	383	309	331	283	353
VIII	360	372	430	467	390	394	455	355	280	359
IX	350	473	436	482	389	391	322	351	280	369
X	348	364	448	463	388	385	318	359	393	370
XI	359	486	439	467	392	402	317	362	396	372
<b>I - XI 2008/I - XI 2007</b>	130.0	124.3	125.6	124.5	124.2	118.5	131.3	121.8	118.1	125.5

**INDEKSI CIJENA PROIZVOĐAČA INDUSTRIJSKIH PROIZVODA**  
**PRODUCERS PRICE INDICES FOR INDUSTRIAL PRODUCTS**

	2006 2005	2007 2006	I-XI 2008 I-XI 2007	Ø 2007 = 100					
				2007					
				XI	XII	I	II	III	IV
<b>Ukupno</b>	<b>103.6</b>	<b>108.5</b>	<b>114.6</b>	<b>102.7</b>	<b>104.0</b>	<b>106.2</b>	<b>107.1</b>	<b>110.1</b>	<b>110.7</b>
<b>Vađenje ruda i kamena</b>	<b>105.4</b>	<b>110.0</b>	<b>113.6</b>	<b>98.6</b>	<b>99.1</b>	<b>108.7</b>	<b>106.4</b>	<b>107.4</b>	<b>109.5</b>
<b>Prerađivačka industrija</b>	<b>104.1</b>	<b>106.6</b>	<b>112.2</b>	<b>98.6</b>	<b>100.5</b>	<b>102.7</b>	<b>104.2</b>	<b>108.6</b>	<b>109.2</b>
<b>Proizvodnja el. energije, gasa i vode</b>	<b>100.0</b>	<b>113.3</b>	<b>122.0</b>	<b>115.3</b>	<b>115.3</b>	<b>115.3</b>	<b>115.3</b>	<b>115.3</b>	<b>115.3</b>
<b>Vađenje ruda i kamena</b>	<b>105.4</b>	<b>110.0</b>	<b>113.6</b>	<b>98.6</b>	<b>99.1</b>	<b>108.7</b>	<b>106.4</b>	<b>107.4</b>	<b>109.5</b>
Vađenje energetske sirovine	106.3	112.5	117.8	100.0	100.0	117.1	117.1	117.1	117.1
Vađenje kamenog uglja, lignita i treseta	106.3	112.5	117.8	100.0	100.0	117.1	117.1	117.1	117.1
Vađenje ostalih sirovina i materijala	104.4	108.1	110.3	99.7	98.3	102.0	98.0	99.7	103.6
Vađenje ruda metala	104.5	108.8	110.4	96.5	97.5	101.5	96.6	98.5	103.2
Vađenje ostalih ruda i kamena	104.2	105.1	109.8	102.6	102.6	104.3	104.3	105.3	105.3
<b>Prerađivačka industrija</b>	<b>104.1</b>	<b>106.6</b>	<b>112.2</b>	<b>98.6</b>	<b>100.5</b>	<b>102.7</b>	<b>104.2</b>	<b>108.6</b>	<b>109.2</b>
Prehrambeni proizvodi, pića i duvan	101.9	104.0	113.3	102.3	103.6	109.4	109.5	112.6	112.7
Proizv. prehrambenih proizvoda i pića	103.7	105.0	115.6	102.7	104.3	111.0	111.2	114.7	114.9
Proizvodnja duvanskih proizvoda	82.5	98.0	100.0	100.0	100.0	100.0	100.0	100.0	100.0
Proizvodnja tekstila i tekstilnih proizvoda	126.6	105.8	105.5	105.6	103.9	103.9	103.9	103.6	107.7
Proizvodnja tekstilnih predmeta i tkanina	103.2	100.9	101.4	101.6	101.6	101.6	101.6	101.6	101.6
Proizvodnja odjevnih predmeta i krzna	141.3	115.0	113.4	113.2	108.4	108.4	108.4	107.3	119.3
Proizvodnja kože i predmeta od kože	100.0	100.0	101.0	100.0	100.0	100.0	100.0	100.0	100.0
Proizvodnja predmeta od kože i obuće	100.0	100.0	101.0	100.0	100.0	100.0	100.0	100.0	100.0
Prerada drveta i proizvoda od drveta	109.6	101.2	109.5	101.1	101.1	101.9	101.9	109.0	110.5
Proizvodi od drveta, plute i slično	109.6	101.2	109.5	101.1	101.1	101.9	101.9	109.0	110.5
Proizvodnja papira, izdavanje i štampanje	91.5	100.1	118.5	100.2	100.2	100.1	109.3	122.9	122.9
Proizv. celuloze, papira i proizv. od papira	91.5	100.2	100.6	100.6	100.6	100.3	100.4	100.3	100.3
Izdavanje, štampanje i reprodukcija	-	100.0	127.1	100.0	100.0	100.0	113.6	133.8	133.8
Prerada hemijskih proizvoda i vlakana	88.1	121.4	108.3	102.3	102.3	102.3	102.3	103.2	101.1
Proizvodnja hemikalija i hem. proizvoda	88.1	121.4	108.3	102.3	102.3	102.3	102.3	103.2	101.1
Proizvodnja proizv. od gume i plastike	-	102.5	103.3	101.2	101.2	101.2	101.2	101.2	101.2
Proizvodnja proizv. od gume i plastike	-	102.5	103.3	101.2	101.2	101.2	101.2	101.2	101.2
Proizv. proizvoda od ost. nemetalnih min.	101.3	107.3	105.9	101.9	102.4	102.4	103.6	104.7	106.1
Proizv. proizvoda od ost. nemet. minerala	101.3	107.3	105.9	101.9	102.4	102.4	103.6	104.7	106.1
Proizv. osn. metala i metalnih proizvoda	101.9	108.2	112.7	96.4	99.3	101.1	103.2	107.5	107.9
Proizvodnja osnovnih metala	101.9	108.6	113.3	96.2	99.2	101.1	103.3	107.8	108.3
Proizvodnja metal. proizv., osim mašina	-	100.0	100.7	100.0	100.0	100.0	100.0	100.0	100.0
Proizvodnja mašina i uređaja, ostala	112.0	97.0	98.9	99.7	99.7	99.7	99.7	99.7	99.7
Proizvodnja mašina i uređaja, ostala	112.0	97.0	98.9	97.7	97.7	97.7	99.7	99.7	99.7
Prerađivačka industrija, ostala	91.3	103.0	113.4	100.4	100.4	99.6	99.6	111.9	115.0
Proizv. namještaja i raznovrsnih proizvoda	91.3	103.0	113.4	100.4	100.4	99.6	99.6	111.9	115.0
<b>Proizvodnja el. energije, gasa i vode</b>	<b>100.0</b>	<b>113.3</b>	<b>122.0</b>	<b>115.3</b>	<b>115.3</b>	<b>115.3</b>	<b>115.3</b>	<b>115.3</b>	<b>115.3</b>
Proizv. električne energije, gasa i vode	100.0	113.3	122.0	115.3	115.3	115.3	115.3	115.3	115.3
Proizv. el. energije, gasa i vode	100.0	113.3	122.0	115.3	115.3	115.3	115.3	115.3	115.3
<b>Izabrane grupe proizvoda</b>									
<b>Elementi i materijal za ugrađivanje u građevinarstvu</b>	108.9	105.4	106.7	101.0	101.0	101.6	101.7	105.1	105.8

**INDEKSI CIJENA PROIZVOĐAČA INDUSTRIJSKIH PROIZVODA**  
**PRODUCERS PRICE INDICES FOR INDUSTRIAL PRODUCTS**

Ø 2007 = 100							
2008 / Ø 2007							
V	VI	VII	VIII	IX	X	XI	
111.9	118.1	118.3	119.7	118.5	118.4	117.5	Total
115.2	115.6	116.2	116.6	117.8	118.7	118.4	Mining and quarrying
110.4	116.1	116.3	118.3	116.4	116.3	114.8	Manufacturing
115.3	124.4	124.4	124.4	124.4	124.4	124.4	Electricity, gas and water supply
115.2	115.6	116.2	116.6	117.8	118.7	118.4	Mining and quarrying
117.1	117.1	117.1	117.1	119.6	119.6	119.6	Extraction of energy producing materials
117.1	117.1	117.1	117.1	119.6	119.6	119.6	Mining of coal and lignite, extraction of peat
113.8	114.5	115.5	116.2	116.3	117.9	117.5	Mining and quarr. exc. energy produc. materials
114.9	115.4	116.0	116.7	116.9	118.8	118.3	Mining of metal ores
108.5	110.2	113.4	113.4	113.4	113.6	113.6	Other mining and quarrying
110.4	116.1	116.3	118.3	116.4	116.3	114.8	Manufacturing
113.1	113.6	113.9	114.4	114.6	114.2	114.3	Manuf. of food produc., beverages and tobacco
115.4	115.9	116.3	116.8	117.1	116.6	116.8	Manufacture of food products and beverages
100.0	100.0	100.0	100.0	100.0	100.0	100.0	Manufacture of tobacco products
107.7	107.7	107.6	105.1	105.1	105.3	98.9	Manufacture of textile and textile products
101.6	101.6	101.5	100.6	100.6	100.9	100.9	Manufacture of textiles
119.3	119.3	119.3	113.8	113.8	113.8	95.0	Manufacture of wearing apparel and fur
100.0	100.0	100.0	100.0	100.0	105.6	105.6	Manufacture of leather and leather products
100.0	100.0	100.0	100.0	100.0	105.6	105.6	Manufac. of leather products and footwear
111.3	111.3	111.3	111.6	111.6	111.6	111.6	Manufacture of wood and wood products
111.3	111.3	111.3	111.6	111.6	111.6	111.6	Manufac. of wood product, cork and similar
122.9	117.0	120.3	120.3	120.3	120.7	120.7	Manufacture of paper, publishing and printing
100.3	100.3	100.3	100.3	100.3	101.6	101.6	Manufac. of pulp, paper and paper products
133.8	133.8	129.9	129.9	129.9	129.9	129.9	Publishing, printing and reproduction
101.1	107.9	107.9	109.9	117.7	117.7	117.7	Manufacture of chemical products and fibres
101.1	107.9	107.9	109.9	117.7	117.7	117.7	Manuf. of chemicals and chemical products
101.2	101.2	101.2	106.7	106.7	106.7	106.7	Manufacture of rubber and plastic products
101.2	101.2	101.2	106.7	106.7	106.7	106.7	Manufacture of rubber and plastic products
106.1	106.4	106.4	106.4	106.4	106.4	107.3	Manufacture of other non-metal minerals
106.1	102.4	106.4	106.4	106.4	106.4	107.3	Manuf. of other non-metal mineral products
109.6	118.6	118.8	121.8	118.3	118.2	116.1	Manufac. of basic metals and metal products
110.0	119.5	119.8	122.8	119.2	119.1	116.5	Manufacture of basic metals
100.0	100.0	100.0	100.0	100.0	100.0	107.6	Manuf. of metal products except machinery
98.5	98.5	98.5	98.5	98.5	98.5	98.5	Manufacture of other machinery and equipment
98.5	98.5	98.5	98.5	98.5	98.5	98.5	Manuf. of other machinery and equipment
117.3	117.3	117.3	117.3	117.3	117.3	117.3	Manufacturing n.e.c.
117.3	117.3	117.3	117.3	117.3	117.3	117.3	Manufac. of furniture and related products
115.3	124.4	124.4	124.4	124.4	124.4	124.4	Electricity, gas and water supply
115.3	124.4	124.4	124.4	124.4	124.4	124.4	Electricity, gas and water supply
115.3	124.4	124.4	124.4	124.4	124.4	124.4	Electricity, gas and water supply
106.5	106.7	106.7	109.0	109.0	109.0	111.3	Chosen groups of products Elements and material for building in the construction



## INDEKSI CIJENA NA MALO / RETAIL PRICES INDEX

Ø 2007 = 100

	Indeks cijena na malo / Retail prices index					
	opšti indeks cijena na malo General retail prices index		poljoprivrednih proizvoda Of agricultural products		industrijskih proizvoda Of industrial products	
	sa sezonskim proizvodima With seasonal products	bez sezonskih proizvoda Without seasonal products	sa sezonskim proizvodima With seasonal products	bez sezonskih proizvoda Without seasonal products	ukupno Total	bez prehrambenih proizvoda Without non-food products
2004	90.9	90.9	82.6	83.5	93.2	93.2
2005	93.9	93.9	84.4	86.2	94.3	94.2
2006	96.0	96.0	91.7	92.2	96.1	95.7
2007	100.0	100.0	100.0	100.0	100.0	100.0
Ø I – XI 2007	99.7	99.7	99.6	99.6	99.7	99.6
Ø I – XI 2008	109.0	109.0	109.7	109.9	107.7	107.7
2007						
XI	103.7	103.6	105.0	104.0	103.3	104.1
XII	103.9	103.9	110.0	106.9	103.5	104.2
2008						
I	105.4	105.3	112.8	110.0	104.2	104.2
II	105.9	105.7	114.0	110.9	104.2	104.0
III	106.3	106.1	116.7	114.2	104.6	104.5
IV	107.1	107.1	122.6	121.1	105.3	104.6
V	108.1	107.7	125.5	120.6	106.1	105.3
VI	111.1	111.0	118.2	118.2	109.6	110.8
VII	111.2	111.3	113.0	115.9	110.1	111.4
VIII	111.3	111.3	110.1	111.5	110.0	110.4
IX	112.1	112.2	110.6	110.3	110.8	110.9
X	111.9	111.8	109.2	104.8	110.5	110.7
XI	111.0	110.8	108.4	104.2	109.2	108.3
I – XI 2008/I – XI 2007	109.4	109.4	110.1	110.4	108.0	108.2

/ nastavak /

/ continued /

Nazivak / Name	Indeks cijena na malo prehrambenih proizvoda Retail prices index of food products			Piće Beverages	Robe Goods	Usluge Services
	prehrambeni proizvodi / Food products		industrijsko prehrambeni Industrial – food products			
	sa sezonskim With seasonal	bez sezonskih Without seasonal				
2004	91.9	92.7	93.6	90.9	92.6	83.9
2005	92.6	93.0	94.2	97.3	93.9	94.4
2006	95.7	95.9	96.4	99.1	96.0	95.9
2007	100.0	100.0	100.0	100.0	100.0	100.0
Ø I – XI 2007	99.7	99.7	99.7	99.9	99.7	99.6
Ø I – XI 2008	108.7	108.7	108.5	103.5	107.8	113.9
2007						
XI	103.1	103.0	102.6	100.2	103.6	104.3
XII	103.9	103.4	102.9	100.5	103.8	104.3
2008						
I	106.1	105.6	105.0	101.0	104.7	108.4
II	106.5	105.9	105.2	101.4	104.8	110.5
III	107.2	106.6	105.5	101.5	105.3	110.6
IV	109.3	108.8	107.0	103.0	106.2	110.8
V	110.6	109.6	108.0	103.2	107.1	111.9
VI	110.2	110.0	108.8	103.7	110.1	115.1
VII	109.7	109.9	109.1	104.1	110.3	115.2
VIII	110.4	110.6	110.5	104.3	110.0	116.5
IX	111.6	111.6	111.7	105.1	110.8	117.9
X	110.8	110.3	111.1	105.2	110.4	118.1
XI	111.3	110.9	111.8	105.6	109.2	118.3
I – XI 2008/I – XI 2007	109.0	109.0	108.8	103.5	108.1	114.4

## INDEKSI TROŠKOVA ŽIVOTA/ COSTS OF LIVING INDEX

	Ukupno <i>Total</i>	Ishrana <i>Food</i>	Duvan i piće <i>Tobacco and beverages</i>	Odjeća i obuća <i>Clothes and footwear</i>	Stan Rent <i>Rent</i>	Ogrijev i osvjetljenje <i>Electricity and fuel</i>	Pokuć- stvo <i>House- hold furnish- ings</i>	Higije- na i zdra- vlje <i>Hygiene and health care</i>	Kultura i razonoda <i>Culture and entertain- ment</i>	Saobraćaj i PTT <i>Transport and communi- cations</i>	Robe <i>Goods</i>	Usluge <i>Services</i>
2004	91.1	91.9	93.7	95.0	92.5	86.7	97.8	97.7	95.8	89.7	92.4	79.6
2005	93.2	91.7	98.0	97.1	95.5	86.8	98.1	98.5	96.4	92.7	93.0	93.3
2006	96.0	95.8	99.4	98.1	96.1	87.4	98.7	98.9	97.6	96.3	96.1	94.7
2007	100.0	100.0	100.0	100.0	100.0	100.0	100.0	100.0	100.0	100.0	100.0	100.0
Ø I – XI 2007	99.7	99.7	100.0	100.0	99.8	98.8	100.0	100.0	99.8	99.2	99.7	99.4
Ø I – XI 2008	108.2	109.0	102.2	100.8	103.0	123.6	101.0	100.6	102.8	114.6	108.0	110.6
2007												
XI	104.0	103.4	100.0	100.4	101.7	113.0	100.3	100.2	101.7	108.3	103.7	106.4
XII	104.3	104.7	100.3	100.4	101.7	113.0	100.4	100.2	101.7	108.3	104.1	106.4
2008												
I	105.8	107.4	100.3	100.4	101.7	113.0	100.5	100.2	101.7	109.1	105.7	107.1
II	106.0	107.7	100.4	100.4	102.0	113.0	100.5	100.3	101.7	108.8	105.8	107.6
III	106.4	108.5	100.5	100.4	102.1	111.9	100.5	100.4	101.7	110.2	106.2	107.6
IV	107.7	110.8	102.0	100.4	102.1	111.9	100.5	100.4	101.7	110.4	107.7	107.8
V	108.7	112.3	102.1	100.3	102.4	111.9	100.7	100.4	101.6	112.9	108.7	108.6
VI	110.0	110.5	102.5	100.3	102.3	131.6	100.6	100.6	101.5	119.7	109.8	111.5
VII	109.5	109.2	102.8	100.4	102.5	131.7	100.7	100.6	102.1	121.4	109.3	111.6
VIII	109.9	110.2	102.9	100.6	104.5	131.9	101.2	100.6	102.2	118.7	109.6	112.7
IX	111.0	111.5	103.3	101.5	104.5	133.9	101.8	100.5	105.6	119.4	110.7	113.9
X	111.0	111.4	103.4	102.0	104.5	134.7	101.8	101.5	105.6	118.0	110.7	113.9
XI	110.7	112.0	103.7	102.1	104.8	134.7	102.0	101.5	105.3	111.5	110.3	114.1
I–XI 2008/ I– XI 2007	108.6	109.3	102.2	100.8	103.2	125.1	101.0	100.7	102.9	115.4	108.3	111.2

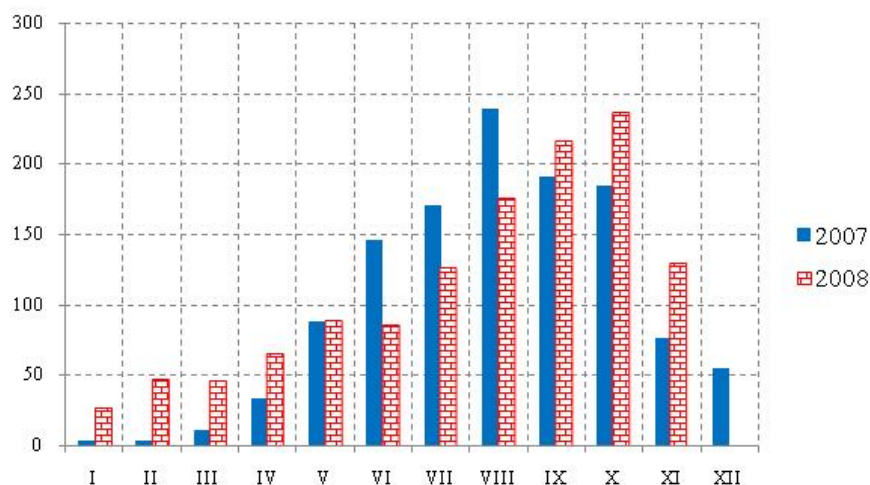
**INDEKSI CIJENA NA MALO PO GRUPAMA PROIZVODA**  
**RETAIL PRICE INDEX BY GROUPS OF PRODUCTS**

	2006 2005	2007 2006	I-XI 2008 I-XI 2007	Ø 2007 = 100					
				2007					
				XI	XII	I	II	III	IV
Proizvodi od žitarica	100.1	101.9	111.1	100.6	100.6	107.8	108.2	108.7	108.8
Povrće svježe – ukupno	116.5	114.6	112.7	114.0	116.1	131.8	131.2	133.0	134.8
Povrće stalno	111.9	108.4	114.2	108.9	111.9	126.0	125.2	127.8	130.2
Voće svježe – ukupno	106.1	111.7	111.0	101.1	102.4	103.9	107.3	111.9	124.1
Voće stalno	106.8	110.8	112.8	103.6	103.8	104.5	107.3	113.0	127.6
Prerađevine od povrća	100.4	101.8	103.4	101.3	101.5	101.7	101.7	102.1	103.0
Prerađevine od voća	98.5	100.2	98.1	100.3	100.2	98.1	98.1	98.1	98.0
Svježe meso	103.9	104.0	104.1	100.5	100.6	100.7	100.8	100.8	100.7
Prerađevine od mesa	100.7	102.6	104.6	101.8	102.0	102.1	102.2	102.4	103.8
Svježa riba	93.9	101.2	109.4	106.7	106.7	106.7	106.7	106.7	107.6
Prerađevine od riba	98.9	102.8	104.5	101.3	101.3	101.3	101.3	101.3	102.8
Kokošja jaja	105.7	111.1	101.4	98.0	100.8	100.9	100.9	101.4	101.4
Mliječni proizvodi	102.3	102.6	114.0	105.9	106.4	108.5	108.8	109.3	110.2
Masnoće	105.2	109.7	137.6	116.9	117.8	120.4	121.4	124.6	139.3
Ostali proizvodi	106.8	107.0	100.4	99.9	100.3	100.4	100.4	99.3	99.5
Alkoholna pića	103.5	102.7	103.5	100.9	101.6	102.4	103.1	103.2	105.4
Duvan	100.5	100.6	101.0	100.1	100.1	100.1	100.1	100.1	101.3
Vunene tkanine	102.6	101.3	101.7	100.1	100.1	101.5	101.5	101.5	101.5
Pamučne tkanine	101.1	101.8	102.7	100.6	100.6	102.6	102.6	102.6	102.6
Svilene tkanine	100.2	100.1	102.6	100.0	100.0	102.6	102.6	102.6	102.6
Konfekcija odjeće	101.5	102.6	101.5	100.7	100.7	100.7	100.6	100.6	100.6
Konfekcija rublja	101.1	102.3	101.7	100.1	100.1	100.1	100.1	100.1	100.1
Obuća	100.5	101.4	100.3	100.5	100.5	100.5	100.5	100.5	100.5
Namještaj	100.2	100.7	100.0	100.0	100.0	100.0	100.0	100.0	100.0
Elek. aparati za domaćinstvo	100.1	99.8	98.6	99.9	99.9	99.9	99.8	99.8	99.8
Poljoprivr. alat i sprave	99.1	104.3	100.1	102.3	105.7	99.4	99.4	99.4	99.4
Tečna goriva i maziva	107.8	99.8	115.6	107.5	107.5	107.5	106.3	109.8	109.8
Građevinski materijal	100.1	112.0	104.9	103.7	103.7	103.9	103.9	103.8	103.8
Ogrijev i osvjetljenje	100.2	115.9	129.3	115.0	115.0	115.0	115.0	114.8	114.8
Školski pribor	100.0	100.1	100.0	100.1	100.1	100.1	100.0	100.0	100.0
Higijenske potrebe	100.3	100.5	100.5	100.2	100.2	100.3	100.2	100.2	100.1
Komunal. – stambene usluge	102.4	107.1	103.8	102.8	102.8	102.8	103.5	103.5	103.5
Zanatske usluge	102.4	103.2	105.4	100.3	100.3	100.3	100.3	100.3	101.8
Kulturne usluge	100.2	100.5	100.5	100.3	100.3	100.4	100.4	100.4	100.4
Saobraćajne i PTT usluge	99.9	104.4	122.9	108.1	108.2	115.8	120.0	120.4	120.0

**INDEKSI CIJENA NA MALO PO GRUPAMA PROIZVODA**  
**RETAIL PRICE INDEX BY GROUPS OF PRODUCTS**

Ø 2007 = 100							
2008 / Ø 2007							
V	VI	VII	VIII	IX	X	XI	
109.7	110.3	110.5	111.5	114.7	114.9	115.9	Cereal products
140.8	114.5	99.2	104.2	108.5	118.9	119.2	Vegetables, fresh - total
125.5	111.2	103.0	107.7	108.1	105.3	104.3	Vegetables, continual
126.4	129.5	129.3	118.6	116.4	104.4	102.0	Fruit, fresh - total
129.8	133.3	133.4	119.8	116.8	104.8	103.5	Fruit, continual
102.9	103.0	103.6	104.3	104.2	104.7	104.2	Vegetables, processed canned
98.0	98.0	98.0	98.1	98.0	98.0	98.3	Fruit, processed / canned
101.5	103.3	103.3	106.1	108.7	108.7	109.3	Meat, fresh
104.2	104.9	105.1	105.9	105.6	105.6	106.5	Meat products
107.6	109.8	109.8	109.8	110.3	110.3	110.3	Fresh fish
103.3	103.8	106.3	106.3	106.3	106.3	109.3	Fish, processed / canned
100.9	100.9	100.7	100.9	100.7	102.5	103.4	Chickens ' eggs
112.5	112.9	113.0	115.6	116.7	118.3	121.0	Dairy products
142.1	143.5	145.3	145.8	145.9	132.0	129.5	Fats
100.1	100.7	100.8	100.9	100.3	100.9	100.7	Other products
105.7	106.5	107.1	107.5	108.9	109.0	109.6	Beverages
101.3	101.3	101.3	101.3	101.3	101.3	101.3	Tobacco
101.5	101.5	101.5	101.5	102.0	102.1	102.1	Woollen fabrics
102.6	102.6	102.6	102.6	102.6	102.6	102.6	Cotton fabrics
102.6	102.6	102.6	102.6	102.6	102.6	102.6	Silk fabrics
100.6	100.6	100.6	100.6	102.9	103.4	104.0	Ready-made clothing
100.1	100.1	100.1	102.2	104.3	105.5	105.5	Ready-made underwear
100.1	100.1	100.1	100.1	100.2	100.3	100.3	Footwear
100.0	100.0	100.0	100.0	100.0	100.0	100.0	Furniture
99.5	98.9	98.7	99.4	96.6	96.6	95.8	Electrical household appliances
99.4	99.4	99.3	100.0	100.0	100.0	100.0	Agricultural tools and equipment
114.6	124.9	128.9	120.6	120.7	118.1	101.8	Liquid fuels and lubricants
103.8	104.4	104.4	105.5	105.5	105.5	105.6	Building materials
114.8	137.8	137.8	137.9	138.4	138.5	138.5	Electricity and fuel
100.0	100.0	100.0	100.1	100.0	100.0	100.0	School outfit
100.1	100.3	100.3	100.3	100.3	101.4	101.4	Hygiene / toiletries
103.5	103.5	103.5	104.6	104.6	104.6	104.6	Public utilities
102.3	102.3	102.8	108.0	111.4	111.4	112.7	Craft services
100.4	100.4	100.7	100.4	100.4	100.5	100.4	Cultural services
122.0	123.6	123.6	124.3	124.3	124.4	124.4	Transport services

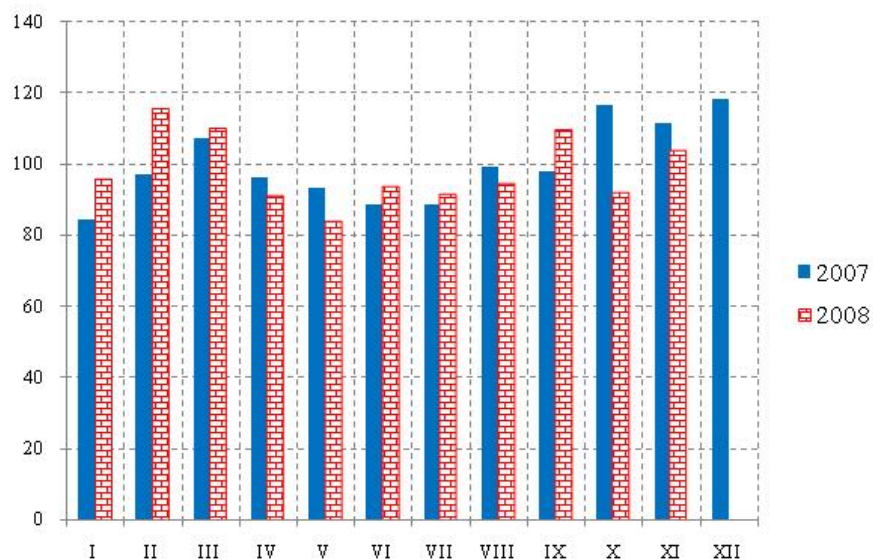
## ŠUMARSTVO / FORESTRY



Ø 2007 = 100

	Indeks Index	Ukupno Total	Proizvedeni sortimenti, m³ / Production of forests assortments						
			Četinara / Conifers				Lišćara / Deciduous trees		
			trupci Saw logs	tehničko drvo Lumber	prostorno drvo Space wood	ogrijevno drvo Firewood	trupci Saw logs	prostorno drvo Space wood	ogrijevno drvo Firewood
2004	95.5	244558	151219	9516	14302	1179	32981	5094	29833
2005	107.9	279228	166742	10156	11521	1949	47719	7460	33510
2006	124.1	325896	194057	11808	12798	1334	46736	15406	43754
2007	100.0	263787	151440	8878	12623	367	45000	14388	31091
Ø I - XI 2007	104.1	22875	13167	750	1079	33	3906	1201	2738
Ø I - XI 2008	112.5	24438	13981	1132	1431	67	4145	801	2880
2007									
XI	76.6	16817	9601	495	857	14	2954	656	2240
XII	54.6	12165	6598	624	755	6	2033	1176	973
2008									
I	26.6	5783	3950	297	837	-	271	280	148
II	46.6	10206	6564	708	1232	-	587	913	202
III	45.4	9505	6687	823	1506	-	233	187	69
IV	64.5	14101	8666	1325	2204	-	782	734	390
V	88.3	18992	9621	1186	939	2	4713	650	1881
VI	84.9	19244	7905	416	368	1	5837	1809	2908
VII	125.7	27227	14237	909	818	26	6690	963	3584
VIII	174.9	38907	19334	885	1803	184	9365	1324	6012
IX	215.7	45896	29335	2063	2021	280	5869	496	5832
X	236.1	50868	31036	2340	2281	175	7537	499	7000
XI	128.7	28090	16460	1500	1735	73	3711	952	3659
I - XI 2008 / I - XI 2007	108.1	106.8	106.2	150.9	132.6	203.0	106.1	66.7	105.2

**INDUSTRIJA / INDUSTRY**  
**INDEKSI INDUSTRIJSKE PROIZVODNJE – po sektorima**  
**INDICES OF INDUSTRIAL PRODUCTION – by sectors**



Ø 2007 = 100

	INDUSTRIJA Ukupno INDUSTRY Total	Vadenje ruda i kamena Mining and quarrying	Prerađivačka industrija Manufacturing	Proizvodnja električne energije, gasa i vode Electricity, gas and water supply
2003	88.5	100.7	78.7	127.6
2004	100.9	95.6	89.2	154.3
2005	99.0	95.7	91.4	133.6
2006	99.9	98.5	91.5	137.7
2007	100.0	100.0	100.0	100.0
Ø I - XI 2007	98.3	103.4	99.2	92.8
Ø I - XI 2008	98.4	123.6	89.9	126.5
2007				
XI	111.7	166.4	97.9	152.6
XII	118.4	62.6	109.3	178.9
2008				
I	95.6	103.9	93.4	102.6
II	115.6	138.4	83.0	251.6
III	110.1	109.2	96.4	171.1
IV	91.1	71.2	86.1	120.1
V	84.1	94.9	88.9	59.2
VI	93.7	121.8	86.0	117.5
VII	91.7	91.5	92.5	88.2
VIII	94.4	181.4	87.9	91.7
IX	109.8	176.5	94.9	151.3
X	92.1	146.0	90.8	78.1
XI	103.7	124.5	89.2	160.6
1 - XI 2008 / 1 - XI 2007	100.1	119.5	90.6	136.3

**INDEKSI INDUSTRIJSKE PROIZVODNJE – po podsektorima**  
**INDICES OF INDUSTRIAL PRODUCTION – by sub-sectors**

Ø 2007 = 100

	Vadenje energetskih sirovina <i>Extraction of energy producing materials</i>	Vadenje ostalih sirovina i materijala <i>Mining and quarrying except energy producing materials</i>	Prehrambeni proizvodi, pića i duvan <i>Manufacture of food products, beverages and tobacco</i>	Proizvodnja tekstila i tekstilnih proizvoda <i>Manufacture of textile and textile products</i>
2003	133.5	87.0	90.6	99.9
2004	125.6	83.1	114.1	117.0
2005	108.9	90.3	111.1	92.8
2006	128.0	86.2	100.7	108.2
2007	100.0	100.0	100.0	100.0
Ø I – XI 2007	93.2	107.6	98.9	97.4
Ø I – XI 2008	141.1	116.3	111.2	85.7
2007				
XI	125.7	183.2	86.8	128.2
XII	174.8	16.2	111.8	128.3
2008				
I	155.8	82.4	70.0	131.5
II	171.5	124.7	71.1	135.8
III	158.7	88.7	90.8	166.4
IV	5.7	98.2	100.2	156.9
V	78.5	101.7	117.8	75.7
VI	146.7	111.5	138.4	162.5
VII	157.7	64.1	148.2	65.5
VIII	167.7	187.0	134.4	8.5
IX	198.7	167.3	116.2	16.2
X	154.4	142.6	123.3	14.9
XI	156.9	111.1	113.3	9.4
I – XI 2008 / I – XI 2007	151.4	108.1	112.4	88.0

/nastavak/

/continued/

	Proizvodnja kože i predmeta od kože <i>Manufacture of leather and leather products</i>	Prerada drveta i proizvodi od drveta <i>Manufacture of wood and wood products</i>	Proizvodnja papira, izdavanje i štampanje <i>Manufacture of paper, publishing and printing</i>	Proizvodnja hemijskih proizvoda i vlakana <i>Manufacture of chemical products and fibres</i>
2003	371.7	61.8	87.5	21.4
2004	17.5	74.5	77.9	35.7
2005	43.9	99.7	98.6	105.4
2006	61.3	98.7	94.6	65.6
2007	100.0	100.0	100.0	100.0
Ø I – XI 2007	109.1	100.3	101.4	96.6
Ø I – XI 2008	206.8	77.5	93.1	66.4
2007				
XI	69.7	111.1	77.1	97.1
XII	-	96.8	84.9	137.6
2008				
I	-	35.4	68.3	97.1
II	148.8	92.2	80.0	67.9
III	79.1	98.1	83.9	83.8
IV	-	66.2	77.6	84.8
V	69.7	58.8	79.0	68.2
VI	632.8	84.8	90.8	19.5
VII	474.6	96.5	132.6	16.9
VIII	316.4	95.2	137.5	65.7
IX	-	76.4	109.7	78.0
X	79.1	71.9	84.3	55.0
XI	474.6	77.2	80.7	93.7
I – XI 2008 / I – XI 2007	189.6	77.3	91.8	68.7

**INDEKSI INDUSTRIJSKE PROIZVODNJE – po podsektorima**  
**INDICES OF INDUSTRIAL PRODUCTION – by sub-sectors**

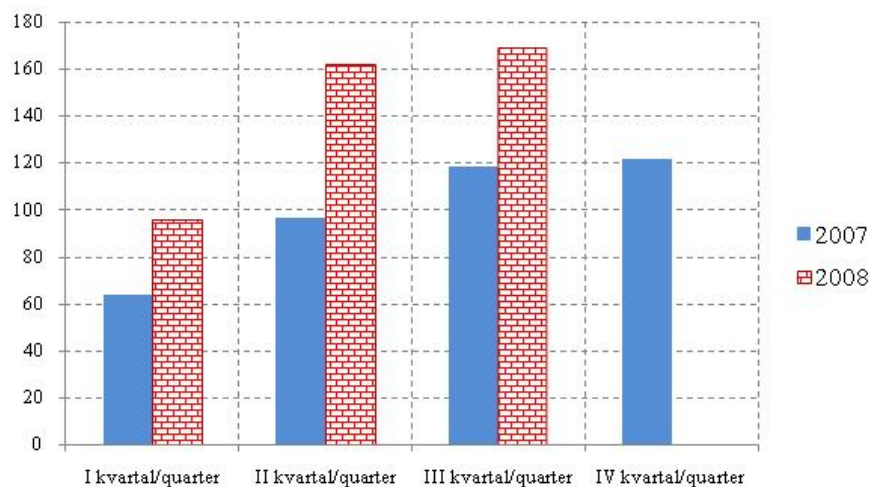
Ø 2007 = 100 /continued/				
/nastavak /	Proizvodnja proizvoda od gume i plastičnih masa <i>Manufacture of rubber and plastic products</i>	Proizvodnja proizvoda od ostalih nemetalnih minerala <i>Manufacture of other non-metal minerals</i>	Proizvodnja osnovnih metala i metalnih proizvoda <i>Manufacture of basic metals and metal products</i>	Proizvodnja mašina i uređaja, ostala <i>Manufacture of other machinery and equipment</i>
2003	395.2	105.1	81.6	36.8
2004	150.2	99.9	92.6	35.5
2005	141.5	99.5	86.4	45.8
2006	98.4	100.4	90.5	103.4
2007	100.0	100.0	100.0	100.0
Ø I - XI 2007	97.4	99.7	99.3	101.0
Ø I - XI 2008	67.9	99.5	88.4	102.5
2007				
XI	135.1	95.2	98.7	100.4
XII	128.4	103.2	107.7	88.9
2008				
I	162.6	102.9	98.1	71.0
II	22.9	91.8	83.7	84.2
III	63.0	96.3	97.6	89.3
IV	84.2	91.5	81.8	100.4
V	25.8	90.6	89.1	76.8
VI	99.2	87.4	82.2	124.4
VII	100.2	99.2	91.0	115.8
VIII	68.7	109.2	83.0	37.6
IX	47.7	108.8	93.1	140.9
X	30.5	111.5	89.4	134.8
XI	30.5	111.5	89.4	134.8
XII	42.0	105.4	83.3	152.3
I – XI 2008 / I – XI 2007	69.7	99.8	89.0	101.5
/nastavak /	/continued/			
	Proizvodnja mašina, uređaja i aparata za domaćinstvo <i>Manufacture of machines, devices and apparatus for households</i>	Proizvodnja saobraćajnih sredstava <i>Manufacture of transport equipment</i>	Prerađivačka industrija, ostala <i>Manufacturing n.e.c.</i>	Proizvodnja električne energije, gasa i vode <i>Electricity, gas and water supply</i>
2003	-	98.1	27.9	127.6
2004	-	111.9	18.8	154.3
2005	54.5	103.9	26.2	133.7
2006	62.3	102.4	101.3	137.8
2007	100.0	100.0	100.0	100.0
Ø I – XI 2007	106.1	100.7	95.8	92.8
Ø I - XI 2008	35.9	88.9	108.9	126.5
2007				
XI	65.9	127.0	143.4	152.6
XII	32.9	92.1	146.1	178.9
2008				
I	65.9	107.9	181.3	102.6
II	65.9	95.2	142.1	251.6
III	65.9	92.1	117.0	171.1
IV	65.9	111.1	115.2	120.1
V	65.9	76.2	132.1	59.2
VI	65.9	66.7	91.8	117.5
VII	-	88.9	111.9	88.2
VIII	-	79.4	94.9	91.7
IX	-	88.9	122.1	151.3
X	-	79.4	57.5	78.1
XI	-	92.1	32.0	160.6
I – XI 2008 / I – XI 2007	33.8	88.3	113.7	136.3



**GRAĐEVINARSTVO / CONSTRUCTION**

Vrijednost izvršenih radova u hiljadama EUR / Value of finalized construction works

Ø 2007 = 100

**VRIJEDNOST IZVRŠENIH I UGOVORENIH RADOVA, BROJ ZAPOSLENIH I IZVRŠENI EFEKTIVNI ČASOVI****VALUE OF FINALIZED AND ORDERED WORKS, NUMBER OF EMPLOYEES AND FINALIZED EFFECTIVE HOURS**

	Indeks <i>Index</i>	Vrijednost izvršenih radova u hiljadama EUR <i>Value of finalized construction works</i>	Prosječan broj radnika <i>Average number of employees</i>	Indeks <i>Index</i>	Izvršeni efektivni časovi u 000 <i>Finalized effective hours in thousands</i>	
2004	27.3	54051	2011	54.5	4514	2004
2005	37.1	73252	2343	64.6	5345	2005
2006	103.3	204248	3525	101.7	8424	2006
2007	100	197639	3522	100	8280	2007
2007 I kvartal	63.9	31581	3189	88.9	1840	2007 I quarter
II kvartal	96.2	47505	3474	102.1	2114	II quarter
III kvartal	118.3	58464	3580	102.5	2122	III quarter
IV kvartal	121.6	60089	3843	106.5	2204	IV quarter
2008 I kvartal	96.0*	47445 *	4093 *	106.5 *	2205 *	2008 I quarter
II kvartal	162.0*	80023 *	4567 *	124.4 *	2574 *	II quarter
III kvartal <sup>1)</sup>	168.7	83376	4118	129.3	2676	III quarter <sup>1)</sup>

/ nastavak/

/ continued /

	Indeks <i>Index</i>	Nove narudžbe na zgradama u hilj. EUR <i>New orders on buildings, thous. EUR</i>	Indeks <i>Index</i>	Nove narudžbe na ostalim građevinama u hilj. EUR <i>New orders on other buildings, thous. EUR</i>	
2006	70.9	99327	82.6	60720	2006
2007	100	140006	100	73539	2007
2007 I kvartal	37.2	13033	95.7	17596	2007 I quarter
II kvartal	83.1	29069	125.4	23054	II quarter
III kvartal	50.9	17833	65.0	11944	III quarter
IV kvartal	228.8	80071	113.9	20945	IV quarter
2008 I kvartal	78.1 *	27354 *	156.2	28722	2008 I quarter
II kvartal	81.1 *	28385 *	205.0 *	37686 *	II quarter
III kvartal <sup>1)</sup>	36.4	12730	115.6	21248	III quarter <sup>1)</sup>

**SPOLJNA TRGOVINA / EXTERNAL TRADE <sup>1)</sup>**  
**Izvoz i uvoz po zemljama, u hilj. EUR / Exports and imports by countries, thous EUR**

	Izvoz / Export			Uvoz / Import			
	I – X	I – X	Indeks / Index	I – X	I – X	Indeks / Index	
	2007	2008	<u>I – X 2008</u> I – X 2007	2007	2008	<u>I – X 2008</u> I – X 2007	
<b>UKUPNO</b>	<b>499790.6</b>	<b>389962.0</b>	<b>78.0</b>	<b>1932560.4</b>	<b>2090213.3</b>	<b>108.2</b>	<b>TOTAL</b>
<b>Evropa</b>	<b>497797.9</b>	<b>386251.0</b>	<b>77.6</b>	<b>1590774.1</b>	<b>2018054.2</b>	<b>126.9</b>	<b>Europe</b>
Albanija	9565.4	5391.3	56.4	12036.5	17234.6	143.2	Albania
Austrija	1289.5	1229.3	95.3	57289.8	80341.5	140.2	Austria
Belgija-Luxemburg	552.0	139.7	25.3	5289.2	7653.7	144.7	Belgium – Luxembourg
BiH (sa Rep. Srpskom)	20161.0	17929.6	88.9	90166.7	135912.4	150.7	B&H (with RS)
Bugarska	307.1	107.0	34.9	9144.9	9477.7	103.6	Bulgaria
Velika Britanija	2144.4	3240.5	151.1	7647.4	4854.7	63.5	Great Britain
Grčka	66122.6	56315.2	85.2	77589.1	163817.3	211.1	Greece
Danska	3.3	11.4	346.2	1459.2	1866.1	127.9	Denmark
Italija	168911.2	117073.0	69.3	132879.0	168308.7	126.7	Italy
Mađarska	84659.6	6583.6	7.8	40065.9	46218.8	115.4	Hungary
Njemačka	10478.0	16158.3	154.2	75912.3	108947.7	143.5	Germany
Slovenija	24975.1	35846.2	143.5	120440.6	138497.7	115.0	Slovenia
Poljska	1.1	99.8	9328.0	16091.1	9691.9	60.2	Poland
Makedonija	628.0	749.1	119.3	17738.5	25097.0	141.5	Macedonia
Rumunija	107.9	1019.5	945.2	12971.2	20256.4	156.2	Romania
Ruska federacija	567.5	943.1	166.2	5025.4	2760.5	54.9	Russian Federation
Srbija <sup>2)</sup>	87341.6	90611.1	103.7	573331.3	714133.6	124.6	Serbia
Hrvatska	9001.5	6079.4	67.5	107939.1	142992.8	132.5	Croatia
Francuska	151.0	254.4	168.4	10344.7	22398.4	216.5	France
Holandija	2388.5	3571.7	149.5	18510.9	22707.5	122.7	Netherlands
Češka Republika	2017.5	4380.1	217.1	24008.2	22940.3	95.6	Czech Republic
Švajcarska	743.8	1713.5	230.4	94932.1	71503.4	75.3	Switzerland
Švedska	120.7	663.3	549.4	34839.4	19624.4	56.3	Sweden
Španija	204.3	47.7	23.3	12936.0	15977.5	123.5	Spain
Turska	938.0	257.0	27.4	14973.9	23905.3	159.6	Turkey
Ostale zemlje	4417.2	15836.2	358.5	17211.7	20934.5	121.6	Other countries
<b>Azija</b>	<b>568.6</b>	<b>1838.3</b>	<b>323.3</b>	<b>316561.1</b>	<b>41751.3</b>	<b>13.2</b>	<b>Asia</b>
Irak	11.6	900.3	7754.1	0.0	0.0	0.0	Iraq
Izrael	1.1	15.8	1445.9	2443.1	1078.4	44.1	Israel
Indija	0.0	0.0	0.0	1037.6	694.3	66.9	India
Indonezija	0.0	0.0	0.0	354.2	410.0	115.8	Indonesia
Japan	4.4	77.5	1756.5	282087.8	1931.5	0.7	Japan
Kina	69.0	129.7	187.8	22825.4	30281.7	132.7	China
Koreja	1.1	0.8	76.2	873.2	930.8	106.6	Korea
Tajland	0.0	0.0	0.0	2142.2	615.5	28.7	Thailand
Hong Kong	0.0	18.3	0.0	2314.7	1839.9	79.5	Hong Kong
Ostale zemlje	481.4	696.1	144.6	2482.9	3969.1	159.9	Other countries
<b>Afrika</b>	<b>845.4</b>	<b>1027.8</b>	<b>121.6</b>	<b>990.7</b>	<b>887.6</b>	<b>89.6</b>	<b>Africa</b>
Egipat	586.9	745.9	127.1	283.9	641.7	226.0	Egypt
Etiopija	0.0	0.0	0.0	0.0	0.0	0.0	Ethiopia
Libijska Araps.Džamahirija	0.0	82.7	0.0	0.0	0.0	0.0	Libyan Arab Jamahiriya
Maroko	0.0	0.0	0.0	96.4	5.4	5.6	Morocco
Tunis	0.0	0.0	0.0	56.2	9.4	16.8	Tunis
Ostale zemlje	258.5	199.2	77.1	554.2	231.1	41.7	Other countries
<b>Amerika</b>	<b>574.1</b>	<b>839.3</b>	<b>146.2</b>	<b>24004.6</b>	<b>29431.9</b>	<b>122.6</b>	<b>America</b>
Kanada	77.8	90.4	116.2	1720.3	1968.0	114.4	Canada
Panama	37.6	0.0	0.0	825.2	208.7	25.3	Panama
SAD	425.7	636.9	149.6	13703.1	17397.5	127.0	USA
Argentina	0.0	0.0	0.0	165.9	514.0	309.8	Argentina
Brazil	0.0	91.7	0.0	5547.1	6910.9	124.6	Brazil
Ekvador	0.0	0.0	0.0	17.4	1402.0	8057.5	Ecuador
Kolumbija	0.0	0.0	0.0	16.8	0.0	0.0	Columbia
Peru	0.0	0.0	0.0	8.6	0.0	0.0	Peru
Devičanska ostrva	0.0	17.5	0.0	1884.1	355.5	18.9	The Virgin Islands
Ostale zemlje	33.0	2.7	8.3	116.1	675.4	581.8	Other countries
<b>Australija i Okeanija</b>	<b>4.6</b>	<b>5.7</b>	<b>123.0</b>	<b>229.8</b>	<b>88.3</b>	<b>38.4</b>	<b>Australia and Oceania</b>
Australija	4.6	5.7	123.0	105.4	31.2	29.6	Australia
Novi Zeland	0.0	0.0	0.0	0.0	6.8	0.0	New Zealand
Ostale zemlje	0.0	0.0	0.0	105.4	50.4	47.8	Other countries

<sup>1)</sup> Predhodni podaci<sup>2)</sup> Za 2008 bez podataka za Kosovo i Metohiju<sup>1)</sup> Previous data<sup>2)</sup> Without data for Kosovo and Metohia in 2008

**SPOLJNA TRGOVINA / EXTERNAL TRADE**  
**Izvoz i uvoz robe, hilj. EUR / Exports and imports of goods, thous EUR**

	Izvoz / Export			Uvoz / Import			
	I – X	I – X	Indeks / Index	I – X	I – X	Indeks / Index	
	2007	2008	$\frac{I - X 2008}{I - X 2007}$	2007	2008	$\frac{I - X 2008}{I - X 2007}$	
<b>Ukupno</b>	<b>499790.6</b>	<b>389962.0</b>	<b>78.0</b>	<b>1932560.4</b>	<b>2090213.3</b>	<b>108.2</b>	<b>Total</b>
Zive životinje	5.2	0.1	2.0	3268.5	12944.5	396.0	Live animals
Meso i drugi klanični proizvodi za jelo	1204.6	2269.3	188.4	24484.0	47346.3	193.4	Meat and edible meat offal
Ribe, ljuskari, mekušci i ostali vodeni beskičmenjaci	84.5	166.8	197.4	4365.5	4981.8	114.1	Fish and crustaceans, molluscs and other aquatic invertebrates
Mlijeko i proizvodi od mlijeka, živalska i ptičja jaja, prirodni med, jestivi proizvodi životinskog porijekla, nepomenuti niti obuhvaćeni na drugom mjestu	58.9	51.8	87.9	21395.1	32128.1	150.2	Dairy produce; birds' eggs; natural honey; edible products of animal origin, not elsewhere specified or included
Proizvodi životinskog porijekla, na drugom mjestu nepomenuti niti obuhv.	4.7	2.2	47.1	283.5	321.2	113.3	Products of animal origin, not elsewhere specified or included
Živo drveće i druge biljke; lukovice, korijenje i slično; siječeno cvijeće i ukrasno lišće	52.1	0.0	0.0	1219.2	2812.0	230.6	Live trees and other plants; bulbs, roots and the like; cut flowers and ornamental foliage
Povrće, korijenje i krtole za jelo	2158.3	3158.2	146.3	2820.2	6014.7	213.3	Edible veg. and certain roots and tub.
Voće za jelo, uključujući jezgrasto voće; kore agruma ili dinja i lubenica	1180.3	3016.2	255.5	6360.4	10037.7	157.8	Edible fruit and nuts; peel of citrus fruits or melons
Kafa, čaj, mate čaj i začini	148.7	127.4	85.7	13150.1	11512.5	87.5	Coffee, tea, maté and spices
Žitarice	0.0	131.2	0.0	3309.8	6630.4	200.3	Cereals
Proizvodi mlinске industrije; slad; skrob; inulin; gluten od pšenice	0.8	366.0	46075.0	13159.7	20216.3	153.6	Products of the milling industry; malt; starches; inulin; wheat gluten
Uljano sjemenje i plodovi; razno zrnavlje, sjeme i plodovi; industrijsko i ljekovito bilje; slama i stočna hrana (kabasta)	154.7	124.3	80.3	1057.3	1621.7	153.4	Oil seeds and oleaginous fruits; miscel-laneous grains, seeds and fruit; indust-rial or medicinal plants; straw and fodd
Seljak;gume, smole i ostali biljni sokovi i ekstrakti	0.0	0.0	0.0	30.3	120.1	396.2	Lac; gums, resins and other vegetable saps and extracts
Biljni materijali za pletarstvo; biljni proiz na drugom mjestu nepomenuti niti obuh.	0.0	0.0	0.0	23.2	53.4	230.7	Vegetable plaiting materials; vegetable produc. not elsewhere specified or incl.
Masnoće i ulja životinskog ili biljnog porijekla i proizvodi njihovog razlaganja; prerađene jestive masnoće; voskovi životinskog i biljnog porijekla	17.6	63.5	360.2	8550.3	14415.7	168.6	Animal or vegetable fats and oils and their cleavage products; prepared edible fats; animal or vegetable waxes
Prerađevine od mesa, riba, ljuskara, mekušaca ili ostalih vodenih beskičmenjaka	1241.0	1722.0	138.8	11331.9	22373.2	197.4	Preparations of meat, of fish or of crustaceans, molluscs or other aquatic invertebrates
Šećer i proizvodi od šećera	372.7	212.1	56.9	9390.8	8644.3	92.1	Sugars and sugar confectionery
Kakao i proizvodi od kakaa	502.2	134.6	26.8	8844.2	14629.8	165.4	Cocoa and cocoa preparations
Proizvodi na bazi žitarica, brašna, skroba ili mlijeka; poslastičarski proizvodi	760.6	953.4	125.4	14175.5	22599.5	159.4	Preparations of cereals, flour, starch or milk; pastrycooks' products
Proizvodi od povrća, voća, uključujući jezgrasto voće, i ostalih dijelova bilja	216.5	176.2	81.4	11124.4	18666.9	167.8	Preparations of vegetables, fruit, nuts or other parts of plants
Razni proizvodi za ishranu	310.9	721.7	232.2	14971.0	20471.9	136.7	Miscellaneous edible preparations
Pića, alkoholi i sirće	21850.5	19178.7	87.8	38792.9	47932.1	123.6	Beverages, spirits and vinegar
Ostaci i otpaci prehrambene industrije; pripremljena hrana za životinje	2.8	22.3	785.3	9535.4	11398.4	119.5	Residues and waste from the food industries; prepared animal fodder
Duvan i proizvodi zamjene duvana	20142.4	3944.3	19.6	12703.8	16768.0	132.0	Tobacco and manuf. tobacco substitut.
So;sumpor; zemlja i kamen;gips,kreč i cement	2075.8	1855.8	89.4	30952.5	48229.2	155.8	Salt; sulphur; earths and stone; plastering materials, lime and cement
Rude, zgure i pepeo	2491.4	2708.4	108.7	216.1	221.4	102.4	Ores, slag and ash
Mineralna goriva, mineralna ulja i proizvodi njihove destilacije;bitumenozne materije; mineralni voskovi	6091.2	11021.3	180.9	232000.0	268474.5	115.7	Mineral fuels, mineral oils and products of their distillation; bituminous substances; mineral waxes
Neorganski hemijski proizvodi; organska ili neorganska jedinjenja plemenitih metala, metala rijetkih zemlji, radioaktivnih elemenata i izotopa	45.7	30.8	67.3	8156.1	15715.2	192.7	Inorganic chemicals; organic or norga-nic compounds of precious metals, of rare-earth metals, of radioactive lemen-ts or of isotopes
Organski hemijski proizvodi	9.9	25.5	257.8	1850.3	2295.9	124.1	Organic chemicals
Farmaceutski proizvodi	5924.7	6704.6	113.2	34012.7	37767.2	111.0	Pharmaceutical products
Đubriva	0.0	0.0	0.0	1769.6	2472.5	139.7	Fertilisers
Ekstrati za štavljenje ili bojenje;tanini i njihovi derivati;boje, pigmenti i ostale materije za bojenje; boje i lakovi; kitovi i ostale zaptivne mase;mastila	124.7	38.7	31.0	15542.6	23643.1	152.1	Tanning or dyeing extracts; tannins and their derivatives; dyes, pigments and other colouring matter; paints and varnishes; putty and other mastics; inks
Eterična ulja i rezinoidi; parfimerijski, kozmetički i toaletni proizvodi	3170.7	3717.1	117.2	14051.7	20274.5	144.3	Essential oils and resinoids; perfumery, cosmetic or toilet preparations

**SPOLJNA TRGOVINA / EXTERNAL TRADE**  
**Izvoz i uvoz robe, hilj. EUR / Exports and imports of goods, thous EUR**

/ nastavak /	Izvoz / Export			Uvoz / Import			/continued /
	I – X 2007	I – X 2008	Indeks / Index I – X 2008 I – X 2007	I – X 2007	I – X 2008	Indeks / Index I – X 2008 I – X 2007	
Sapun, organska površinska aktivna sredstva,preparati za pranje,preparati za podmazivanje,vještački voskovi,pripremljeni voskovi, preparati za poliranje i čišćenje, svijeće i slični proizvodi, paste za modelovanje "zubarski voskovi" i zubarski preparati n	10.5	248.3	2362.6	13418.4	15459.3	115.2	Soap, organic surface-active agents, washing preparations, lubricating preparations, artificial waxes, prepared waxes, polishing or scouring preparati-ons, candles and similar articles, modelling pastes, 'dental waxes' and dental preparatio
Bjelančevinaste materije;modifikovani skrobovi;lijepkovi;enzimi	18.7	17.3	92.4	2228.8	3357.2	150.6	Albuminoidal substances; modified starches; glues; enzymes
Eksplozivi; pirotehnički proizvodi; šibice; piroforne legure; zapaljivi preparati	410.1	557.7	136.0	845.0	699.3	82.8	Explosives; pyrotechnic products; matches; pyrophoric alloys; certain combustible preparations
Proizvodi za fotografske ili kinematografske svrhe	17.6	18.7	106.0	1063.2	1517.5	142.7	Photographic or cinematographic goods
Razni proizvodi hemijske industrije	94.5	25.9	27.5	9280.0	14129.3	152.3	Miscellaneous chemical products
Plastične mase i proiz. od plastičnih masa	272.4	503.0	184.7	42087.8	59265.0	140.8	Plastics and articles thereof
Kaučuk i proizvodi od kaučuka i gume	156.8	68.0	43.3	11101.3	15220.4	137.1	Rubber and articles thereof
Sirova sitna i krupna koža, sa dlakom ili bez dlake(osim krzna) i štavljena koža	3049.9	2138.4	70.1	87.1	111.5	128.0	Raw hides and skins (other than furskins) and leather
Proizvodi od kože, sedlarski i sarački proizvodi , predmeti za putovanje, ručne torbe i slični kontejneri i proizvodi od životinjskih crijeva (osim svilenog ketguta)	83.4	55.4	66.4	4778.8	8225.9	172.1	Articles of leather; saddlery and harness; travel goods, handbags and similar containers; articles of animal gut (other than silkworm gut)
Prirodno i vještačko krzno;proizvodi od krzna	0.0	0.0	0.0	144.0	280.9	195.1	Furskins and artificial fur; manufactures thereof
Drvo i proizvodi od drveta;drveni ugali	15602.3	12983.9	83.2	20638.6	32874.3	159.3	Wood and artic. of wood; wood charcoal
Pluta i proizvodi od plute	0.0	0.0	0.0	1186.3	913.2	77.0	Cork and articles of cork
Proizvodi od slame, esparta ili ostalih materijala za pletariju; korparskih i pletarskih proizvoda	3.0	0.0	0.2	180.8	253.7	140.3	Manufactures of straw, of esparto or of other plaiting materials; basketware and wickerwork
Celuloza od drveta ili drugih vlaknastih celuloznih materijala; hartija i karton (otpaci i ostaci) za ponovnu preradu	208.0	352.1	169.3	232.3	4.2	1.8	Pulp of wood or of other fibrous cellulosic material; recovered (waste and scrap) paper or paperboard
Hartija i karton; proizvodi od hartijine pulpe, hartije ili kartona	1256.5	1360.2	108.2	20149.3	24564.3	121.9	Paper and paperboard; articles of paper pulp, of paper or of paperboard
Štampane knjige, novine, slike i ostali proizvodi grafičke industrije, rukopisi, kucani tekstovi i planovi	720.5	970.4	134.7	15289.8	18591.2	121.6	Printed books, newspapers, pictures and other products of the printing industry; manuscripts, typescripts and plans
Svila	0.0	5.6	0.0	29.6	41.3	139.7	Silk
Vuna,fina ili gruba životinjska dlaka, predivo i tkanine od konjske dlake	39.1	34.9	89.4	70.7	38.1	53.9	Wool, fine or coarse animal hair; horsehair yarn and woven fabric
Pamuk	71.7	87.9	122.5	739.1	848.3	114.8	Cotton
Ostala biljna tekstilna vlakna; predivo od hartije i tkanine od prediva od hartije	0.0	0.0	0.0	27.0	25.4	93.8	Other vegetable textile fibres; paper yarn and woven fabrics of paper yarn
Vještački ili sintetički filamenti	1.7	4.1	245.6	417.3	379.3	90.9	Man-made filaments
Vještačka ili sintetička vlakna, sječena	3.7	12.1	330.9	755.8	753.3	99.7	Man-made staple fibres
Vata, filc i netkani materijal; specijalna prediva; kanapi, užad, konopci i kablovi i proizvodi od njih	8.3	48.0	580.4	1064.9	1507.0	141.5	Wadding, felt and nonwovens; special yarns; twine, cordage, ropes and cables and articles thereof
Tepisi i ostali tekstilni podni pokrivači	6.6	13.6	205.1	1709.8	3883.0	227.1	Carpets and other textile floor cover.
Specijalne tkanine; taftovani tekstilni proizv.; čipke; tapiserije; pozamanterija, vez	0.6	3.8	601.6	83.3	273.6	328.5	Special woven fabrics; tufted textile fabri-cs; lace; tapestries; trimmings; embroid.
Tekst. tkanine, impregnisane, premazane, prevučene, prekrivene ili laminirane, tekstilni proizvodi pogodni za tehn. svrhe	1.4	4.3	313.8	531.3	689.9	129.8	Impregnated, coated, covered or laminated textile fabrics; textile articles of a kind suitable for industrial use
Pleteni ili kukičani materijali	0.0	3.3	0.0	83.5	191.3	229.1	Knitted or crocheted fabrics
Odjeća i pribor za odjeću, pleteni ili kukičani	64.8	188.5	291.0	5424.3	13716.2	252.9	Articles of apparel and clothing accessories, knitted or crocheted
Odjeća i pribor za odjeću, osim pletenih ili kukičanih proizvoda	457.0	525.0	114.9	19349.8	33453.3	172.9	Articles of apparel and clothing accessories, not knitted or crocheted
Ostali gotovi proizvodi od tekstila; setovi,iznošena, dotrajala odjeća i dotrajali proizvodi od tekstila; krpe	31.4	86.3	275.0	4971.8	6084.5	122.4	Other made-up textile articles; sets; worn clothing and worn textile articles; rags
Obuća, kamašne i slični proizvodi; dijelovi tih proizvoda	231.3	512.6	221.7	22725.7	31314.7	137.8	Footwear, gaiters and the like; parts of such articles

**SPOLJNA TRGOVINA / EXTERNAL TRADE**  
**Izvoz i uvoz robe, hilj. EUR / Exports and imports of goods, thous EUR**

/ nastavak /

/ continued /

	Izvoz / Export			Uvoz / Import			
	I – X	I – X	Indeks / Index	I – X	I – X	Indeks / Index	
	2007	2008	$\frac{I - X 2008}{I - X 2007}$	2007	2008	$\frac{I - X 2008}{I - X 2007}$	
Šeširi, kape i ost. pokrivke za glavu i djel.	0.4	29.8	7400.7	424.0	863.2	203.6	Headgear and parts thereof
Kišobrani, suncobrani, štapovi, štapovi-stolice, bičevi, korbači i njihovi dijelovi	8.7	2.5	28.4	1207.5	1349.6	111.8	Umbrellas, sun umbrellas, walking-sticks, seat-sticks, whips, riding-crops and parts thereof
Perje i papperje, preparirano i proizvodi izradjeni od perja i papperja; vještačko cvijeće; proizvodi od ljudske kose	2.3	0.2	9.5	121.0	161.6	133.5	Prepared feathers and down and articles made of feathers or of down; artificial flowers; articles of human hair
Proizvodi od kamena, gipsa, cementa, betona, azbesta, liskuna ili sličnih mater.	614.2	561.0	91.3	12555.4	17211.6	137.1	Articles of stone, plaster, cement, asbestos, mica or similar materials
Keramički proizvodi	95.8	146.4	152.8	35977.7	44672.1	124.2	Ceramic products
Staklo i proizvodi od stakla	49.2	83.8	170.1	11496.2	14898.1	129.6	Glass and glassware
Prirodni ili kultivisani biseri, drago ili polu-drugo kamenje, plemeniti metali, metali platinirani plemenitim metalima, i proizvodi od njih; imitacije nakita; metalni novac	196.3	73.7	37.6	419.2	1506.5	359.4	Natural or cultured pearls, precious or semi-precious stones, precious metals, metals clad with precious metal, and artic. thereof; imitation jewellery; coin
Gvožđe i čelik	47867.2	76548.9	159.9	55368.1	88130.7	159.2	Iron and steel
Proizvodi od gvožđa i čelika	10391.7	17353.1	167.0	55911.7	89841.0	160.7	Articles of iron or steel
Bakar i proizvodi od bakra	5972.3	5174.5	86.6	2349.4	3279.6	139.6	Copper and articles thereof
Nikl i proizvodi od nikla	0.0	1.9	0.0	1833.6	1492.6	81.4	Nickel and articles thereof
Aluminijum i proizvodi od aluminijuma	308371.5	172004.3	55.8	20563.8	29417.2	143.1	Aluminium and articles thereof
Olovo i proizvodi od olova	229.1	133.1	58.1	58.1	55.4	95.4	Lead and articles thereof
Cink i proizvodi od cinka	9.8	6.0	61.0	243.4	375.4	154.2	Zinc and articles thereof
Kalaj i proizvodi od kalaja	48.1	0.8	1.7	18.6	15.2	81.7	Tin and articles thereof
Ostali prosti metali; kremeti; proiz. od njih	0.0	0.0	0.0	16.9	110.1	652.5	Other base metals; cermets; art. thereof
Alati, nožarski proizvodi, kašike i viljuške, od prostih metala; njihovi dijelovi od prostih metala	282.8	131.4	46.5	6350.7	7238.5	114.0	Tools, implements, cutlery, spoons and forks, of base metal; parts thereof of base metal
Razni proizvodi od prostih metala	1576.4	1597.8	101.4	6507.4	10318.4	158.6	Miscellaneous articles of base metal
Reaktori, kotlovi, mašine i mehanički uređaji i njihovi dijelovi	8941.3	14075.6	157.4	137517.4	223585.5	162.6	Reactors, boilers, machinery and mechanical appliances; parts ther.
Električne mašine i oprema i njihovi dijelovi; aparati za snimanje i reprodukciju zvuka; televizijski aparati za snimanje i reprodukciju slike i zvuk, dijelovi i pribor za te proizvode	1421.9	4562.8	320.9	122594.2	149205.8	121.7	Electrical machinery and equipment and parts thereof; sound recorders and reproducers, television image and sound recorders and reproducers, and parts and accessories of such articles
Šinska vozila i njihovi dijelovi; željeznički i tramvajski kolosječni sklopovi i pribor i njihovi dijelovi, mehanička i elektromehanička signalna oprema za saobraćaj svih vrsta	373.0	587.4	157.5	1592.3	2738.9	172.0	Railway or tramway locomotives, rolling-stock and parts thereof; railway or tramway track fixtures and fittings and parts thereof; mechanical (including electro-mechanical) traffic signalling equipment of all kinds
Vozila, osim željezničkih ili tramvajskih šinskih vozila i njihovi dijelovi i pribor	1526.1	3310.8	216.9	194513.0	218785.0	112.5	Vehicles other than railway or tramway rolling-stock, and parts and acc. Ther.
Vazduhopl., kosmičke letjelice i njihovi dj.	251.8	779.1	309.5	155.5	784.9	504.9	Aircraft, spacecraft, and parts thereof
Brodovi, čamci i ploveće konstrukcije	1209.0	4584.6	379.2	2898.8	6140.7	211.8	Ships, boats and floating structures
Optički, fotografski, kinematografski, mjerni, kontrolni, precizni, medicinski i hirurški instrumenti i aparati; njihovi dijelovi i pribor	382.4	595.8	155.8	296462.1	18964.1	6.4	Optical, photographic, cinematographic, measuring, checking, precision, medical or surgical instruments and apparatus; parts and accessories ther.
Časovnici i njihovi dijelovi	169.1	41.5	24.6	1518.9	2898.9	190.9	Clocks and watches and parts thereof
Muzički instrumenti, dijelovi i pribor ovih proizvoda	4.0	5.8	145.1	384.0	319.9	83.3	Musical instruments; parts and accessories of such articles
Namještaj, posteljina, madraci, nosači madraca, jastuci i slični punjeni proizvodi; lampe i druga svijetleća tijela, na drugom mjestu nepomenuti ili uključeni; osvijetljeni znaci, osvijetljene pločica imenima i slično, montažne zgrade	839.2	1239.3	147.7	53258.9	76969.6	144.5	Furniture; bedding, mattresses, mattress supports, cushions and similar stuffed furnishings; lamps and lighting fittings, not elsewhere specified or included; illuminated signs, illuminated name-plates and the like; prefabricated build.
Igračke, rekviziti za društvene igre i sport; njihovi dijelovi i pribor	355.3	362.6	102.0	6727.2	11527.3	171.4	Toys, games and sports requisites; parts and accessories thereof
Razni proizvodi	28.8	13.6	47.0	2909.3	3337.1	114.7	Miscellaneous manufactured articles
Predmeti umjetnosti, kolekcija i starina	114.4	183.3	160.2	162.9	155.4	95.4	Works of art, collectors' pieces and ant.
Nerazvrstani	15232.6	2296.9	15.1	126848.9	1463.0	1.2	Other

## UNUTRAŠNJA TRGOVINA / DOMESTIC TRADE

## PROMET U TRGOVINI NA MALO / TURNOVER IN RETAIL TRADE

Ø 2007 = 100

	Indeks <sup>1)</sup> / Index	PROMET u hilj. EUR / Turnover in thous. EUR
2006	71	544335
2007	100	765931
Ø I - X 2007	96.8	61796
Ø I - X 2008	123.2*	78675*
2007		
X	117.0	74565
XI	105.7	67504
XII	126.0	80705
2008		
I	73.8*	47100
II	93.9	59924
III	107.2	68422
IV	111.0	70844
V	121.0*	77213*
VI 2)	142.8	91173
VII	152.37	97253
VIII	153.6	98055
IX	152.1	97105
X	124.8*	79666
<b>I – X 2008 / I – X 2007</b>	<b>127.3</b>	<b>127.3</b>

<sup>1)</sup> Indeks prometa po tekućim cijenama.<sup>2)</sup> Prethodni podaci<sup>1)</sup> Index of turnover at current prices.<sup>2)</sup> Preliminary data

	PROMET U TRGOVINI NA MALO / TURNOVER IN RETAIL TRADE						
	PROMET u hilj. EUR <i>Turnover in thous. EUR 2008</i>	tekući mjesec na prethodni <i>Current month compared to the previous month</i>		mjesec 2008. na isti mjesec 2007. <i>Month in 2008 compared to the same month 2007</i>		mjesec 2008. na Ø 2007 <i>Month in 2008 to Ø 2007</i>	
		indeks prometa u tekućim cijenama <i>Index of turnover at current prices</i>	indeks prometa u stalnim cijenama <i>Index of turnover at constant prices</i>	indeks prometa u tekućim cijenama <i>Index of turnover at current prices</i>	indeks prometa u stalnim cijenama <i>Index of turnover at constant prices</i>	indeks prometa u tekućim cijenama <i>Index of turnover at current prices</i>	indeks prometa u stalnim cijenama <i>Index of turnover at constant prices</i>
2008							
I	47100	58.6	58.3	127.9	123.5	73.8	72.2
II	59924	127.2	127.1	155.6	150.3	93.9	91.8
III	68422	114.2	114.1	137.3	133.4	107.2	104.7
IV	70844	103.6	102.9	123.6	119.2	111.0	107.7
V	77213	109.0	108.71	127.33	122.8	121.0	117.5
VI	91173	118.1	117.5	138.0	132.7	142.8	137.5
VII	97253	106.7	106.6	119.5	114.9	152.4	146.5
VIII	98055	100.8	100.4	118.3	113.2	153.6	147.1
IX	97105	99.0	97.2	138.8	131.5	152.1	142.9
X*	79666	82.0	81.1	106.8	101.6	124.8	117.2

**PRODAJA I OTKUP PROIZVODA POLJOPRIVREDE, ŠUMARSTVA I RIBARSTVA**  
**SALE AND BUYING OUT OF PRODUCTS FROM AGRICULTURE, FORESTRY AND FISHERY**

U hiljadama EUR

In thousands EUR

	Indeks Index Ø 2007 =100	Ukupna vrijednost Total value	Poljoprivreda i šumarstvo / Agriculture and forestry				
			žita Cereals	industrijsko bilje Industrial crops	povrće <sup>1)</sup> Vegetables	voće Fruit	grožđe Vine
2004	76.5	12641	13	809	245	1429	1392
2005	94.9	15689	2	1032	146	1128	1480
2006	93.3	15422	11	-	142	1127	1208
2007	100.0	16523	-	831	284	1000	1778
Ø I – XI 2007	98.1	1351	-	53	24	91	162
Ø I – XI 2008	122.0	1680	-	-	43	134	173
2007							
XI	95.8	1319	-	-	22	9	-
XII	120.9	1665	-	244	22	2	-
2008							
I	48.8	673	-	-	20	1	-
II	57.9	798	1	-	25	1	-
III	63.2	870	-	-	14	1	-
IV	74.8	1031	-	-	6	1	-
V	71.5	985	-	-	4	1	-
VI	129.4	1782	-	-	97	482	-
VII	149.6	2061	-	-	116	360	446
VIII	244.6	3369	-	-	111	488	1167
IX	169.7	2337	-	-	-	-	285
X	190.9	2630	-	-	23	79	-
XI	141.0	1942	-	-	37	53	-
I – XI 2008 / I – XI 2007	124.3	124.3	-	-	182.0	147.4	106.7

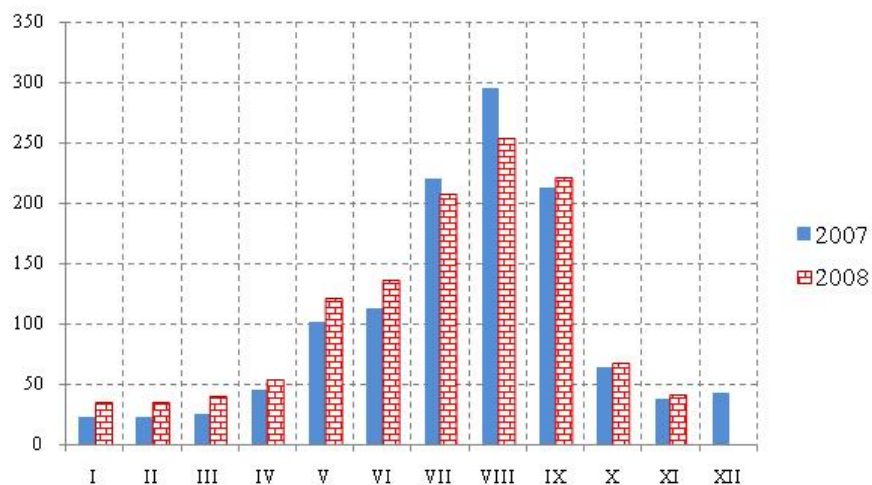
/ nastavak /

/ continued /

	Poljoprivreda i šumarstvo / Agriculture and forestry						Ribarstvo Fishery
	preradevine voća i grožđa Products of fruit and vine	Stoka Livestock	živina i jaja Poultry and eggs	mlijeko i mliječni proizvodi Milk and milk products	koža i vuna Leather and wool	ostali proizvodi Other products	riba svježa Fresh fish
2004	76	2723	1192	3767	10	638	347
2005	67	4762	814	4762	8	1173	315
2006	100	5437	732	5379	-	969	317
2007	171	5912	800	4640	-	810	297
Ø I – XI 2007	13	457	69	385	-	73	24
Ø I – XI 2008	15	646	88	443	-	119	19
2007							
XI	-	816	50	395	-	-	27
XII	32	885	43	405	-	1	31
2008							
I	-	227	51	360	-	-	14
II	7	315	48	374	-	15	12
III	5	332	48	407	-	50	13
IV	6	348	112	408	-	126	24
V	15	355	97	491	-	6	16
VI	5	380	86	504	-	209	19
VII	-	489	102	490	-	42	16
VIII	31	540	102	508	-	400	22
IX	101	860	103	479	-	460	20
X	-	1936	104	464	-	-	24
XI	-	1320	115	388	-	3	26
I – XI 2008 / I – XI 2007	122.3	141.2	127.8	115.0	-	162.0	77.4

<sup>1)</sup> Uključeni i krompir i pasulj.<sup>1)</sup> includes potatoes and beans.

## UGOSTITELJSTVO / CATERING



## PROMET U UGOSTITELJSTVU / TURNOVER IN CATERING

Ø 2007 = 100

	Indeks <sup>1)</sup> <i>Index</i>	Promet u hilj. EUR <i>Turnover in thousands EUR</i>
2003	44.4	60485
2004	43.6	59383
2005	48.1	65552
2006	94.6	128720
2007	100	136039
Ø I - XI 2007	105.2	11932
Ø I - XI 2008	109.7	12446
2007		
XI	37.2	4276
XII	42.2	4785
2008		
I	34.0	3863
II	35.0	3978
III	40.0	4545
IV	53.4	6060
V	120.9	13710
VI	135.2	15336
VII	207.4	23514
VIII	253.3	28718
IX	220.5	25000
X	67.3	7633
XI	40.1	4550
I – XI 2008 / I – XI 2007	104.3	104.3

Indeks prometa po tekućim cijenama.

Index of turnover at current prices.



**TURIZAM / TOURISM****Dolasci i noćenja turista po zemljama i prema vrsti mjesta***Tourist arrivals and tourist overnight stays by country and type of resort*

	2007	Kumulativ I – XI		2008			
		2007	2008	IX	X	XI	
<b>Dolasci turista</b>							<b>Tourist arrivals</b>
<b>Ukupno</b>	<b>1133432</b>	<b>1115596</b>	<b>1171072</b>	<b>138996</b>	<b>34304</b>	<b>17717</b>	<b>Total</b>
Domaći	149294	143491	151611	17473	6633	4087	Domestic
Strani	984138	972105	1019461	121523	27671	13630	Foreigners
<b>Noćenja turista – ukupno</b>	<b>7294530</b>	<b>7235345</b>	<b>7724257</b>	<b>925777</b>	<b>180251</b>	<b>97654</b>	<b>Tourist overnight stays – total</b>
<b>Noćenja domaćih turista</b>	<b>851045</b>	<b>836361</b>	<b>816504</b>	<b>99420</b>	<b>29183</b>	<b>16196</b>	<b>Overnight stays of domestic tourists</b>
<b>Noćenja stranih turista</b>	<b>6443485</b>	<b>6398984</b>	<b>6907753</b>	<b>826357</b>	<b>151068</b>	<b>81458</b>	<b>Overnight stays of foreigners</b>
Albanija	188572	185179	151079	18333	2807	3281	Albania
Austrija	97273	97089	102072	7507	1681	421	Austria
Belgija	44139	44071	48267	7900	1785	395	Belgium
Bosna i Hercegovina	703472	696440	786156	104146	31360	27055	Bosnia and Herzegovina
Bugarska	18912	18688	18124	4944	1084	209	Bulgaria
Češka Republika	266598	266566	241388	28108	365	120	Czech Republic
Danska	6964	6876	6940	946	356	87	Danmark
Finska	18259	18255	12136	5274	675	211	Finland
Francuska	181384	181011	142956	35372	3809	645	France
Grčka	5993	5783	11873	666	690	182	Greece
Holandija	41826	41605	33471	9620	1504	156	Netherlands
Hrvatska	44717	43798	81002	8833	3307	2260	Croatia
Italija	205937	203693	149497	35484	1999	1686	Italy
Mađarska	200675	200361	184867	41229	1619	283	Hungary
Makedonija	156371	152247	223695	23659	12978	13701	Macedonia
Norveška	53121	53025	60259	10931	4240	185	Norway
Njemačka	116807	116203	136659	19162	13852	767	Germany
Poljska	73332	73101	85310	10360	667	130	Poland
Rumunija	8236	8180	15604	2491	632	162	Romania
Rusija	789497	784640	895751	142434	15265	4680	Russia
Slovačka	83939	83932	76156	6900	25	112	Slovakia
Slovenija	90023	89106	78397	7684	3324	1532	Slovenia
Srbija <sup>1)</sup>	2644312	2631505	2863725	234161	26357	18023	Serbia <sup>1)</sup>
Švajcarska	26193	25908	12871	1515	401	150	Switzerland
Švedska	48247	48152	55287	6156	1365	128	Sweden
Ukrajina	65944	65306	180861	15147	2103	276	Ukraine
Velika Britanija	90543	87890	74404	11738	9728	1363	Great Britain
Ostale evropske zemlje	109128	108481	115957	18571	29145	1098	Other European countries
Izrael	8823	8730	9274	1436	949	197	Israel
Kanada	5894	5834	6610	547	322	107	Canada
SAD	22005	21649	20937	2992	1950	1254	USA
Ostale vanevropske zemlje	26349	25680	26168	2111	1900	602	Other non-European countries
<b>Noćenja po vrstama mjesta – ukupno</b>	<b>7294530</b>	<b>7235345</b>	<b>7724257</b>	<b>925777</b>	<b>180251</b>	<b>97654</b>	<b>Overnight stays by type of tourist resorts – total</b>
Glavni administrativni centar	104986	97301	104429	11230	9420	8440	Main administrative center
Primorska	6961444	6920140	7404973	896934	157303	78721	Coastal
Planinska	105892	100936	97784	7965	4598	4041	Mountain
Ostala turistička mjesta	121871	116651	116659	9567	8910	6416	Other tourist resorts
Ostala mjesta	337	317	412	81	20	36	Other places
<b>Primorska mjesta</b>							<b>Coastal resorts</b>
Bar	923729	910164	997403	94924	21459	20167	Bar
Budva	2990529	2975449	3277313	496898	58101	17906	Budva
Kotor	378656	376666	343918	45939	3430	1361	Kotor
Tivat	264369	262681	273201	22282	6319	4423	Tivat
Ulcinj	712798	712520	660667	32929	4431	660	Ulcinj
Herceg Novi	1691363	1682660	1852471	203962	63563	34204	Herceg Novi

**TURIZAM / TOURISM****DOLASCI I NOĆENJA GOSTIJU PO VRSTAMA TURISTIČKIH MJESTA  
TOURIST ARRIVALS AND TOURIST OVERNIGHT STAYS BY TYPE OF PLACE**

	Dolasci / Arrivals					Noćenja / Nights				
	glavni grad <i>Capital</i>	primorska mjest <i>Coastal resorts</i>	planinska mjest <i>Mountain resorts</i>	ostala turistička mjest <i>Other tourist resorts</i>	ostala mjest <i>Other places</i>	glavni grad <i>Capital</i>	primorska mjest <i>Coastal resorts</i>	planinska mjest <i>Mountain resorts</i>	ostala turistička mjest <i>Other tourist resorts</i>	ostala mjest <i>Other places</i>
2004	24580	639980	18529	20285	110	44750	4396888	54583	64763	110
2005	29819	747734	19185	23599	120	53886	5022260	53577	82003	121
2006	39295	859904	26362	28144	223	74169	5691770	68424	101677	230
2007	45588	1010742	39158	37642	302	104986	6961444	105892	121871	337
Ø I – XI 2007	3785	91049	3358	3200	26	8846	629104	9176	10605	29
Ø I – XI 2008	4245	95414	3269	3502	32	9494	673179	8889	10605	37
2007										
XI	4056	8316	1354	1882	9	8208	40884	2863	4922	9
XII	3958	9201	2222	2439	16	7685	41304	4956	5220	20
2008										
I	3351	9404	5119	2114	7	15436	54407	20200	7903	7
II	3527	15375	2934	2261	11	7046	81589	6654	7230	11
III	4253	12006	2111	3563	28	8551	82149	4728	10794	40
IV	4005	28238	1269	2891	9	8230	166559	3081	9913	9
V	4886	62286	3688	4345	29	9963	331871	9095	12755	8
VI	4488	107494	3204	4140	25	8476	741648	7725	12950	25
VII	4677	297571	4860	4983	54	11189	2026674	12981	14908	54
VIII	3237	356522	5214	5254	66	6448	2786371	16143	15403	96
IX	5360	126392	3401	3772	71	11230	896934	7965	9567	81
X	4543	24561	2195	2985	20	9420	157303	4598	8910	20
XI	4364	9578	1545	2201	29	8440	78721	4041	6416	36
I – XI 2008/ I – XI 2007	112.1	104.8	97.3	109.4	123.1	107.3	107.0	96.9	100.0	127.6

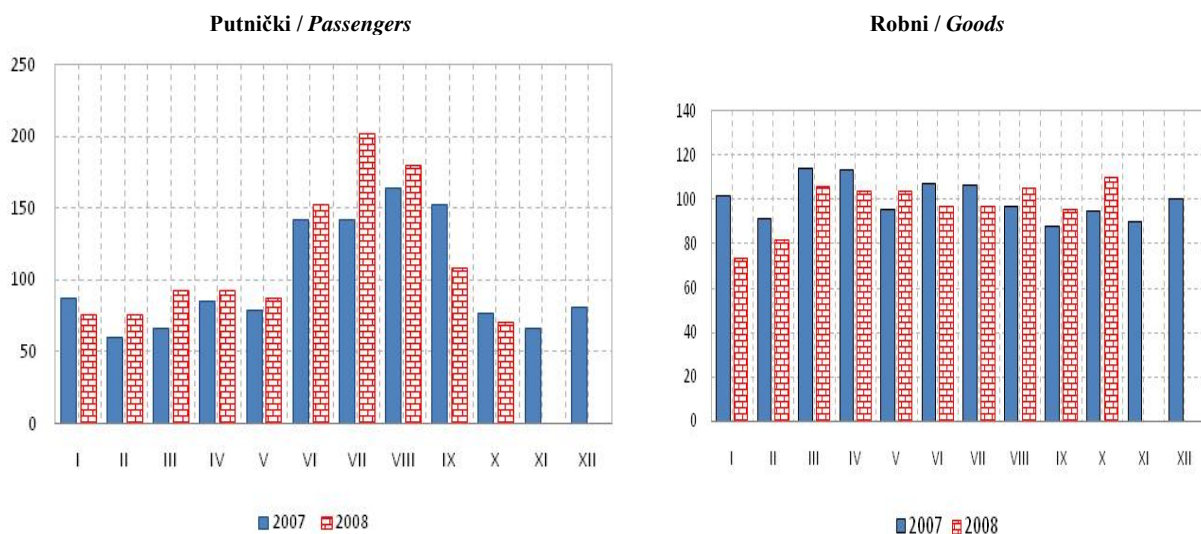
**DOLASCI I NOĆENJA TURISTA / TOURIST ARRIVALS AND TOURIST OVERNIGHT STAYS**

	Dolasci / Arrivals			Noćenja / Nights		
	ukupno / Total	domaći / Domestic	strani / Foreign	ukupno / Total	domaći / Domestic	strani / Foreign
2004	703484	515424	188060	4561094	3337247	1223847
2005	820457	548452	272005	5211847	3628337	1583510
2006	953928	576130	377798	5936270	3740179	2196091
2007	1133432	149294	984138	7294530	851045	6443485
Ø I – XI 2007	101418	13045	88373	657759	76033	581726
Ø I – XI 2008	106461	13783	92678	702205	74228	627978
2007						
XI	15617	3845	11772	56886	11511	45375
XII	17836	5803	12033	59185	14684	44501
2008						
I	19995	8104	11891	97953	41598	56355
II	24108	6908	17200	102530	22436	80094
III	21961	6271	15690	106262	22776	83486
IV	36412	6727	29685	187792	31686	156106
V	75234	16900	58334	363717	74452	289265
VI	119351	16660	102691	770824	83718	687106
VII	312145	28894	283251	2065806	156920	1908886
VIII	370293	32723	337570	2824461	238192	2586269
IX	138996	17473	121523	925777	99420	826357
X	34304	6633	27671	180251	29183	151068
XI	17717	4087	13630	97654	16196	81458
I – XI 2008/ I – XI 2007	105.0	105.7	104.9	106.8	97.6	108.0

# **SAOBRAĆAJ, SKLADIŠTENJE I VEZE** **TRANSPORT, STORAGE AND COMMUNICATIONS**

## **Željeznički saobraćaj / Railway transport**

Ø 2007 = 100

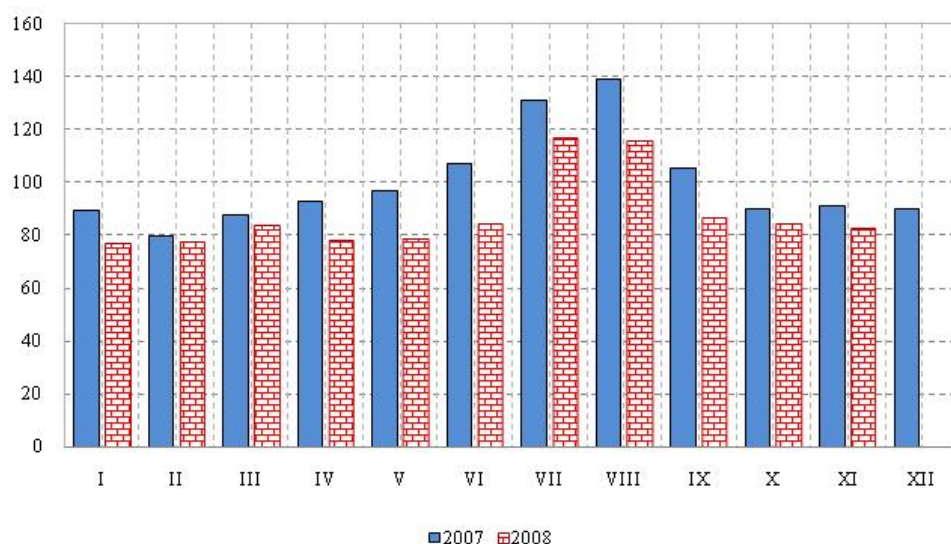


	ŽELJEZNIČKI SAOBRAĆAJ / RAILWAY TRANSPORT					
	Putnički / Passenger			Robni / Goods		
	indeks Index	putnici u 000 Passengers, thousands	putnički km u 000 Passenger kilometres in thousands	Indeks Index	prevoz robe u 000 t Goods in thousands tonnes	tonski km u 000 Tonne-kilometres in thousands
2004	119.5	1066	129600	39.4	1006	92502
2005	126.7	1137	122920	46.3	1182	132782
2006	119.5	1067	131500	98.5	2494	182163
2007	100	999	110000	100	1761	184957
Ø I – XI 2007	101.6	85	9318	99.9	145	15400
Ø I – XI 2008	110.6	88	10136	98.9	146	15241
			1			
2007						
XI	65.7	50	6000	89.7	145	13800
XII	81.2	60	7500	100.6	160	15556
2008						
I	76.3	60	7000	73.7	120	11370
II	76.4	60	7000	81.8	133	12607
III	92.7	80	8500	106.3	156	16387
IV	92.7	70	8500	103.8	157	15994
V	87.3	80	8000	103.8	157	15994
VI	152.7	130	14000	97.3	146	15000
VII	201.8	164	18500	97.3	146	15000
VIII	180.0	130	16500	105.7	154	16300
IX	109.1	80	10000	95.9	128	14786
X	70.9	50	6500	110.1	149	16966
XI	76.4	60	7000	111.9	158	17251
<b>I – XI 2008/ I – XI 2007</b>	<b>108.8</b>	<b>103.5</b>	<b>108.8</b>	<b>99.0</b>	<b>100.7</b>	<b>99.0</b>

**SAOBRAĆAJ, SKLADIŠTENJE I VEZE**  
**TRANSPORT, STORAGE AND COMMUNICATIONS**

**Drumski saobraćaj - Putnički / Road transport - passengers**

Ø 2007 = 100

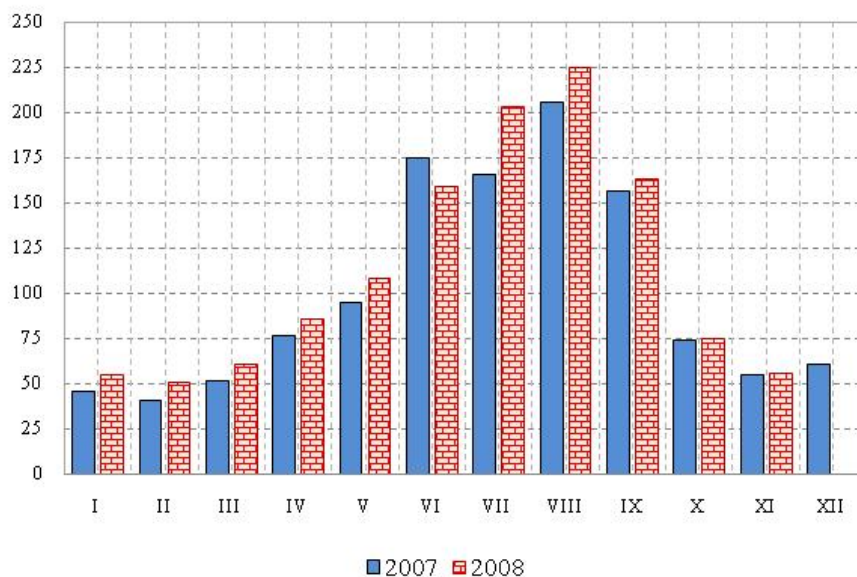


	DRUMSKI SAOBRAĆAJ / ROAD TRANSPORT							
	PUTNIČKI / PASSENGERS				ROBNI / GOODS			
	indeks Index	putnici u 000 Passengers, thous.	putnički km u 000 Passenger kilometres in thous.	autobuski km u 000 Bus kilometres in thous	indeks Index	roba u 000 tona Goods in thousands tonnes	tonski km u 000 Tonne- kilometres in thous.	kamionski km u 000 Truck kilometres in thous.
2004	85.2	4488	100620	11472	65.7	1639	64508	9332
2005	80.4	4302	84883	9593	74.4	1857	61100	9365
2006	81.2	4825	114695	16809	79.2	1961	72724	15167
2007	100	5738	141247	17630	100	2131	91786	16269
Ø I – XI 2007	100.9	473	11878	1490	99.4	175	7605	1350
Ø I – XI 2008	87.8	461	10339	1510	151.1	206	11559	1250
2007								
XI	91.0	471	10717	1351	107.9	181	8206	1316
XII	90.2	530	10589	1238	107.1	207	8126	1413
2008								
I	76.9	332	8999	1187	154.2	165	11795	1062
II	77.9	350	9175	1203	137.0	205	10519	1259
III	83.9	387	9879	1293	182.8	191	13989	1281
IV	78.1	391	9193	1350	207.2	229	15850	1220
V	78.6	407	9250	1435	151.9	178	11623	1205
VI	84.4	464	9934	1612	159.5	195	12198	1211
VII	116.9	651	13760	1911	135.6	210	10374	1305
VIII	115.6	693	13614	1920	140.3	228	10734	1330
IX	87.0	563	10243	1734	136.1	248	10413	1311
X	84.4	449	9940	1539	128.5	208	9833	1325
XI	82.8	382	9746	1427	128.5	214	9827	1238
I – XI 2008/ I – XI 2007	87.0	97.5	87.0	101.3	152.0	117.7	152.0	92.6

**SAOBRAĆAJ, SKLADIŠTENJE I VEZE**  
**TRANSPORT, STORAGE AND COMMUNICATIONS**

Ø 2007 = 100

**Vazdušni saobraćaj - putnički / Air transport - passengers**



	GRADSKI SAOBRAĆAJ LOCAL TRANSPORT		VAZDUŠNI SAOBRAĆAJ, PROMET NA AERODROMIMA AIR TRANSPORT, TRAFFIC AT AIRPORTS		
	indeks Index	prevezeno putnika u 000 Passengers in thousands	PUTNIČKI / PASSENGERS		ROBNI / GOODS
			indeks Index	prevoz putnika Transport of passengers	prevoz robe u tonama Transport of goods in tonnes
2004	179.2	2673	65.1	664801	647
2005	146.2	2177	68.4	697740	1011
2006	106.7	1591	81.4	833715	1067
2007	100.0	1491	100	1024491	1320
Ø I – XI 2007	100.0	124	103.6	88463	110
Ø I – XI 2008	100.0	124	113.1	96604	127
2007					
XI	110.5	137	54.6	46684	134
XII	105.1	131	60.3	51393	107
2008					
I	60.4	75	55.2	47161	133
II	80.6	100	50.6	43192	317
III	74.2	92	61.1	52172	109
IV	83.9	104	86.1	73510	162
V	131.5	163	108.7	92772	103
VI	76.6	95	159.5	136196	98
VII	98.4	122	203.6	173801	109
VIII	108.9	135	225.6	192635	69
IX	127.4	158	163.6	139637	81
X	127.4	158	75.0	64011	116
XI	127.4	158	55.7	47555	108
<b>I – XI 2008/ I – XI 2007</b>	<b>100.0</b>	<b>100.0</b>	<b>109.2</b>	<b>109.2</b>	<b>115.4</b>

SAOBRAĆAJ, SKLADIŠTENJE I VEZE / *TRANSPORT, STORAGE AND COMMUNICATIONS*POMORSKI SAOBRAĆAJ / *MARINE TRANSPORT*

	Prevoz robe / <i>Transport of goods</i>			Promet u lukama ( u tonama ) / <i>Turnover in harbours (tonnes)</i>				
	Indeks <i>Index</i>	u 000 t <i>In thous. tonnes</i>	tonske milje u mil. <i>Tonne milles in millions</i>	Indeks <i>Index</i>	ukupno <i>Total</i>	unutrašnji promet <i>Internal turnover</i>	izvoz <sup>1)</sup> <i>Export</i>	uvoz <sup>2)</sup> <i>Import</i>
2004	65.4	57	267	83.8	1735891	1786	961858	768847
2005	56.8	60	232	98.4	2039211	442	1166959	851211
2006	93.1	818	380	95.9	1988204	116	1027208	941905
2007	100.0	785	408	100	2071310	1825	791509	1280327
Ø I – XI 2007	102.9	67	35	100.5	173605	166	66253	107399
Ø I – XI 2008	91.1	51	31	94.2	162752	759	57965	102214
2007								
XI	70.5	39	24	82.4	142246	-	47616	94630
XII	58.7	45	20	93.6	161654	-	62722	98932
2008								
I	55.8	53	19	108.6	187624	8350	67759	108570
II	64.7	67	22	77.0	133026	-	48466	84560
III	61.7	41	21	86.0	148565	-	51808	96757
IV	58.8	37	20	92.7	160123	-	60679	99017
V	64.7	42	22	94.6	163298	-	57248	105336
VI	55.8	44	19	98.5	170049	-	58142	111907
VII	197.0	54	67	93.3	161199	-	49864	108149
VIII	164.7	57	56	91.3	157735	-	57521	91525
IX	132.3	57	45	105.8	182685	-	59765	122231
X	67.6	56	23	98.9	170847	-	64523	103612
XI	64.7	56	22	89.5	154521	-	61835	92686
I – XI 2008/ I – XI 2007	86.6	73.6	86.6	93.7	93.7	457.5	87.4	95.1

<sup>1)</sup> Tranzit utovar prikazan kod izvoza <sup>2)</sup> Tranzit istovar prikazan kod uvoza / <sup>1)</sup> Transit loading presented in export. <sup>2)</sup> Transit loading presented in import.

P T T SAOBRAĆAJ / *POSTAL, TELEGRAPH AND TELEPHONE (PTT) COMMUNICATIONS*

	Poštanske usluge / <i>Postal services</i>		Telegrafske usluge / <i>Telegraph services</i>		Telefonske usluge / <i>Telephone services</i>	
	pisma u 000 komada <i>Letters in thousands pcs.</i>	paketi u 000 komada <i>Packages in thousands pcs.</i>	uputnice u 000 komada <i>Postal orders in thousands pcs.</i>	telegr. u 000 komada <i>Telegraphs in thousands pcs.</i>	fiksna telefonija <i>Fixed telephony</i>	mobilna telefonija <i>Mobile telephony</i>
					minuti u 000 <i>Minutes in thous.</i>	minuti u 000 <i>Minutes in thous.</i>
2004	12994	52	57	539	...	-
2005	16185	56	65	572	876231	-
2006	17396	30	45	581	862596	488802
2007	18291	23	44	589	864471	660168
Ø I – XI 2007	1483	2	4	49	73555	53455
Ø I – XI 2008	1684	2	3	42	55135	84389
2007						
XI	1604	2	3	51	54717	74333
XII	1982	2	4	50	55361	72157
2008						
I	1694	2	3	47	55661	68486
II	1541	2	3	43	52176	69930
III	1805	2	3	46	53197	88551
IV	1777	2	3	43	49313	86494
V	1595	2	3	45	47944	92013
VI	1750	2	3	38	51205	90138
VII	1489	2	4	41	72421	88210
VIII	1669	2	3	41	81301	86975
IX	1843	2	3	40	54044	83692
X	1630	2	3	43	46013	88843
XI	1728	2	3	35	43211	84952
I – XI 2008/ I – XI 2007	113.5	100.0	75.0	85.7	74.9	157.9

Podaci za 2003 i 2004. godinu su prikazivani u telefonskim impulsima, a za 2005, 2006. i 2007. godinu u minutima.

Data on telephone services – fixed telephony for 2003 and 2004 were given in telephone impulses and for 2005, 2006 and 2007 in minutes.

**MONETARNI AGREGATI ( Novčana masa )**  
**MONETARY AGGREGATES ( MONEY SUPPLY )**

u hilj. EUR, stanje na kraju perioda						balance at end-periods, EUR thous.			
	M0	Depoziti po videnju <sup>1)</sup> <i>Demand deposits<sup>1)</sup></i>	M1	Depoziti po videnju <sup>2)</sup> <i>Demand deposits<sup>2)</sup></i>	M11	Oročeni Depoziti <sup>1)</sup> <i>Time deposits<sup>1)</sup></i>	M2	Oročeni depoziti <sup>2)</sup> <i>Time deposits<sup>2)</sup></i>	M21
	1	2	3 ( 1+2 )	4	5 ( 1+4 )	6	7 ( 3+6 )	8	9 ( 5+8 )
2004	290.935	139.722	430.657	146.179	437.114	104.891	535.548	109.411	546.525
2005 <sup>3)</sup>	351.276	244.991	596.267	263.445	614.721	205.989	802.256	252.573	867.294
2006 <sup>3)</sup>	483.889	594.884	1.078.773	614.641	1.098.530	428.293	1.507.066	488.124	1.586.654
2007 <sup>3)</sup>	592.457	941.689	1.534.146	963.346	1.555.803	1.070.459	2.604.605	1.170.747	2.726.550
IX	542.174	862.242	1.404.416	894.084	1.436.258	878.884	2.283.300	1.063.918	2.500.176
X	540.541	883.733	1.424.274	911.800	1.452.341	947.723	2.371.997	1.158.660	2.611.001
XI	538.957	883.659	1.422.616	913.805	1.452.762	969.542	2.392.158	1.180.795	2.633.892
XII	592.457	942.879	1.535.336	964.537	1.556.994	1.070.962	2.606.298	1.171.250	2.728.244
2008									
I	568.024	875.911	1.443.935	921.589	1.489.613	1.083.590	2.527.525	1.196.399	2.686.012
II	572.768	895.204	1.467.972	926.508	1.499.276	1.154.205	2.622.177	1.275.643	2.774.919
III	544.844	876.680	1.421.524	917.276	1.462.120	1.168.272	2.589.796	1.293.521	2.755.641
IV	557.556	876.888	1.434.444	915.855	1.473.411	1.227.037	2.661.481	1.353.224	2.826.635
V	562.695	894.894	1.457.589	931.790	1.494.485	1.228.598	2.686.187	1.373.146	2.867.631
VI	558.440	891.699	1.450.139	931.076	1.489.516	1.275.791	2.725.930	1.430.535	2.920.051
VII	568.688	859.980	1.428.668	894.319	1.463.007	1.311.616	2.740.284	1.488.295	2.951.302
VIII	580.668	876.748	1.457.416	915.541	1.496.209	1.357.738	2.815.154	1.545.620	3.041.829
IX	566.751	860.833	1.427.584	898.952	1.465.703	1.321.702	2.749.286	1.517.673	2.983.376

IZVOR: Centralna banka Crne Gore

<sup>1)</sup> Bez depozita Vlade Crne Gore<sup>2)</sup> Uključujući depozite Vlade Crne Gore<sup>3)</sup> Stanje na 31. XII

SOURCE: Central bank of Montenegro

<sup>1)</sup> Without Government deposits<sup>2)</sup> Including Government deposits<sup>3)</sup> Balance as at 31 December

**DEPOZITI STANOVNIŠTVA / DEPOSITS BY HOUSEHOLDS**

u mil. EUR, stanje na kraju perioda						balance at end-periods, EUR mill..		
	Depoziti po videnju <i>Demand deposits</i>	Oročeni depoziti / Time deposits					Ukupno <i>Total</i>	
		do 3 mjeseca <i>Up to 3 mounts</i>	od 3 mjeseca do godinu dana <i>From 3 mounts to 1 years</i>	od 1 do 3 godine <i>From 1 to 3 years</i>	preko 3 godine <i>Over 3 years</i>	ukupno <i>Total</i>		
2004	40,1	5,1	29,7	4,4	0,1	39,2	79,3	
2005 <sup>1)</sup>	93,5	7,6	55,0	19,4	0,3	82,2	175,7	
2006 <sup>1)</sup>	294,4	25,8	114,1	64,8	0,3	205,0	499,4	
2007 <sup>1)</sup>	464,6	145,6	278,4	111,5	17,8	553,3	1.017,9	
IX	479,5	55,0	299,0	89,1	0,5	443,7	923,2	
X	474,8	130,9	236,9	109,6	4,6	482,2	957,0	
XI	457,1	136,9	248,7	120,5	7,7	513,8	970,9	
XII	466,0	145,5	278,3	121,4	8,0	553,1	1019,3	
2008								
I	469,6	136,1	294,0	134,3	8,3	572,7	1.042,4	
II	465,4	146,0	332,2	106,0	9,2	593,4	1.058,8	
III	462,3	135,0	312,8	141,0	10,0	598,8	1.061,1	
IV	464,2	150,3	309,9	154,0	10,9	625,1	1.089,3	
V	438,7	168,5	313,6	151,6	10,4	644,1	1.083,0	
VI	410,6	163,7	330,1	146,6	24,5	664,8	1.075,4	
VII	416,9	154,9	330,2	175,3	33,6	694,0	1.110,9	
VIII	418,7	168,7	352,2	159,1	24,4	704,4	1.123,1	
IX	410,6	166,4	359,6	153,8	23,7	703,5	1.114,1	

IZVOR: Centralna banka Crne Gore

<sup>1)</sup> Stanje na 31.XII

SOURCE: Central Bank of Montenegro

<sup>1)</sup> Balance on 31 December

PLATNI BILANS CRNE GORE <sup>1)</sup> u hilj.EUR / *BALANCE OF PAYMENTS OF MONTENEGRO* <sup>1)</sup> EUR thous

Kvartali Quarters	Ukupno Total	TEKUĆI RAČUN / <i>Current account</i>							
		1 ( 1.1 - 1.2) Roba / <i>Goods</i>		2 ( 2.1 - 2.2) Usluge / <i>Services</i>		3 ( 3.1 - 3.2) Dohoci / <i>Income</i>		4 ( 4.1 - 4.2) Tekući transferi <i>Current transfers</i>	
		izvoz Export	uvoz Import	prihodi Revenues	rashodi Expenditures	prihodi Revenues	rashodi Expenditures	prihodi Revenues	rashodi Expenditures
	(1+2+3+4)	1.1	1.2	2.1	2.2	3.1	3.2	4.1	4.2
2005 *	-154.045	460.648	974.301	329.765	134.225	62.291	44.779	163.455	16.899
I	-71.414	118.824	222.636	23.199	24.972	10.939	4.899	31.350	3.219
II	-85.439	117.387	263.087	56.644	33.997	17.929	17.481	42.642	5.476
III	93.796	115.904	250.550	214.470	38.308	18.505	4.423	41.874	3.676
IV	-90.988	108.533	238.028	35.452	36.948	14.918	17.976	47.589	4.528
2006 *	-531.207	648.327	1.497.651	418.036	220.937	65.334	34.534	108.555	18.336
I	-137.180	110.753	267.505	33.287	47.768	7.921	6.809	36.231	3.290
II	-193.632	169.946	404.970	70.317	58.364	17.544	9.370	24.031	2.766
III	-208	188.023	414.686	258.964	62.561	18.958	7.214	23.106	4.797
IV	-200.186	179.604	410.489	55.468	52.245	20.910	11.141	25.187	7.482
2007 *	-825.110	659.734	2.001.380	674.056	233.923	89.420	72.410	100.775	41.381
I	-125.275	153.887	303.794	49.268	45.215	20.148	12.905	23.281	9.946
II	-220.216	169.610	474.061	119.309	52.662	21.312	16.412	24.731	12.043
III	76.854	171.738	480.518	425.768	57.774	22.733	19.246	22.189	8.036
IV	-556.474	164.498	743.008	79.710	78.272	25.228	23.847	30.574	11.357
2008	-615.515	275.901	964.419	197.739	163.597	48.509	42.018	51.394	19.025
I	-292.663	110.531	415.062	63.958	69.634	23.367	17.409	21.911	10.314
II	-322.853	165.370	549.357	133.782	93.951	25.142	24.609	29.483	8.711

/nastavak /

/ continued /

Nastavak /	KAPITALNI I FINANSIJSKI RAČUN / CAPITAL AND FINANCIAL ACCOUNT							/ continued /
Kvartali Quarters	B  Ukupno  Total	račun kapitala  Capital account	2 (2.1+2.2+2.3+2.4+2.5)  Finansijski račun / Financial account					Neto greške i omaške  Net errors and omissions
			direktne investicije-neto  Direct investments - net	porfolio investicije-neto  Portfolio investments - net	ostale investicije-neto  Other investments - net	promjene neto strane aktive kom. b.  Change in Net Foreign Assets	promjena rezervi CBCG  Change in CBM reserves	
	(1+2)	1	2.1	2.2	2.3	2.4	2.5	(A+B)
2005 *	191.589	0	380.921	4.815	-20.390	-60.900	-112.857	37.543
I	59.530	0	169.624	4.972	-987	3.497	-117.576	11.080
II	90.062	0	58.547	726	26.884	-18.639	22.544	8.952
III	-114.627	0	35.040	-149	-119.326	-31.545	1.353	-36.546
IV	156.624	0	117.710	-734	73.039	-14.213	-19.178	54.057
2006 *	537.593	-14.028	466.701	-4.444	153.398	73.015	-137.048	6.387
I	149.368	-9.648	60.162	60	45.263	21.165	32.367	12.188
II	170.076	-3.540	99.771	3.618	53.706	51.748	-35.227	-23.556
III	-72.314	441	83.318	2.888	-65.413	-34.660	-58.888	-72.522
IV	290.462	-1.281	223.449	-11.010	119.842	34.762	-75.300	90.276
2007 *	1.164.837	-1.435	524.876	-4.888	358.108	438.976	-150.800	339.727
I	259.391	-642	132.412	8.231	86.433	66.584	-33.626	134.116
II	338.053	-734	196.630	-5.307	151.033	76.711	-80.280	117.837
III	-30.794	39	47.163	6.713	-104.559	105.658	-85.808	46.060
IV	598.187	-97	148.671	-14.524	225.200	190.023	48.914	41.713
2008	913.898	-101	311.487	-11.383	354.628	294.934	-35.667	298.383
I	464.451	-77	138.425	-7.671	181.869	147.199	4.707	171.789
II	449.446	-24	173.062	-3.712	172.759	147.735	-40.374	126.594

<sup>1)</sup> IZVOR: Centralna banka Crne Gore<sup>1)</sup> SOURCE: Central Bank of Montenegro





**METODOLOŠKA OBJAŠNJENJA****STANOVNIŠTVO**

**Izvori podataka** – Podaci o rođenim, umrlim i zaključenim brakovima prikupljaju se od matičara, a podaci o razvedenim brakovima od sudova nadležnih za razvod braka.

Podaci o unutrašnjim migracijama prikupljaju se od Ministarstva unutrašnjih poslova i javne uprave.

**Obuhvatnost i definicije** – Podaci o prirodnom kretanju stanovništva obuhvataju broj rođenih, umrlih i vjenčanih, koji je registrovan u matičnoj službi, dok se broj razvedenih brakova prikupljaju od strane nadležnih sudova.

Jedinica posmatranja su pojedinačni događaji preseljenja (doseljenja i odseljenja) unutar granica Crne Gore.

**Metodološki materijal** – Detaljna objašnjenja o metodologiji primjenjenoj u vitalnoj statistici nalaze se u Uputstvu za matičare o popunjavanju statističkih listića (o rođenju, slučaju smrti i vjenčanju) i u Uputstvu za sudije o popunjavanju statističkih listića o razvedenom braku.

**ZAPOSLENOST I ZARADE****Zaposlenost**

Podaci o godišnjem prosjeku zaposlenih izračunati su na osnovu dva stanja (31.marta i 30.septembar), a dobijeni su redovnim polugodišnjim izvještajem o zaposlenim i zaradama zaposlenih (RAD – 1P) kao i na osnovu podataka koji su regulisani Zakonom o evidencijama u oblasti rada i zapošljavanja ("Sl.list RCG", br.69/03 ), a vode ih Fondovi Penzijsko invalidskog osiguranja i Zdravstva, koje Zavod za statistiku redovno preuzima od istih.

Podaci o mjesečnom broju zaposlenih dobijeni su na osnovu redovnog mjesečnog istraživanja o zaposlenima i zaradama zaposlenih (Rad – 1, koje se vrši na bazi uzorka i prijava – odjava osiguranika koje vode Republički Fond Penzijsko invalidskog osiguranja i Fond Zdravstva.

**Obuhvatnost**

Polugodišnjim izvještajem o zaposlenima i zaradama zaposlenih (RAD – 1P) obuhvaćena su preduzeća, ustanove i organizacije svih oblika svojine. Ovim istraživanjem nijesu obuhvaćeni strani državljani zaposleni u našoj zemlji. Ne smatraju se zaposlenima lica koja rade po ugovoru o djelu ili po ugovoru o obavljanju privremenih i povremenih poslova.

Podaci o nezaposlenim licima obuhvataju sva lica koja su kod Zavoda za zapošljavanje registrovana kao nezaposlena.

**Definicije**

Pod pojmom zaposleni podrazumijevaju se sva lica koja imaju zasnovan radni odnos sa preduzećem, ustanovom ili organizacijom ili individualnim poslodavcem bez obzira da li su radni odnos zasnovali na neodređeno ili određeno vrijeme i da li rade puno ili kraće od punog radnog vremena.

**Nezaposleni  
Definicije**

Podaci o broju nezaposlenih lica preuzeti su od Zavoda za zapošljavanje i obuhvataju samo lica koja su registrovana kod ove službe.

**METHODOLOGICAL EXPLANATIONS****POPULATION**

**Data sources** – Data on births, deaths and marriages are collected from Registry Offices and data on divorces from the courts of respective jurisdiction.

Data on internal migrations are collected from the Ministry of Internal Affairs and Public Administration.

**Coverage and definitions** – Data on population changes include the number of births, deaths and marriages, registered by Registry Offices, while the number of divorces is collected by the courts of respective jurisdiction.

Observation units are individual occurrences of migrations (moving in and out) within the borders of Montenegro.

**Methodological material** – Detailed explanation on methodology applied in vital statistics can be found in the Instructions for the filling and submitting of statistical questionnaires (on births, deaths and marriages) as well as in the Instructions for judges for the filing of statistical questionnaires on divorces.

**EMPLOYMENT AND EARNINGS****Employment**

The data on annual average of employees are calculated on the basis of two reports (31 March and 30 September) and they are obtained from the regular semiannual report on employees and their earnings (RAD-1P), as well as on the basis of data regulated by the Law on Records in Labor and Employment ("Official Gazette of Republic of Montenegro", No. 69/03), and managed by the Fund for Pension and Disability Insurance and Health Fund.

The data on monthly number of employees are obtained by regular monthly survey of employees and their earnings (RAD-1), conducted on the basis of sample, and registration / withdrawal of beneficiaries in Republic Health Fund and Fund for Pension and Disability Insurance.

**Coverage**

The Semiannual Report on employees and their earnings (RAD-1) includes enterprises, institutions and organizations of all types of ownership. This survey does not include foreign citizens employed in our country. The persons that work pursuant to a job contract or a contract on casual engagement are not considered as employed.

Data about unemployed persons include all persons which are registered as unemployed in the Employment Agency.

**Definitions**

The term "employees" refers to all persons being employed in enterprises, institutions, organizations or by self-employed individuals no matter whether their employment status is based on a permanent or temporary contract and whether they work on a full-time or part-time basis.

**Unemployed  
Definitions**

Data about unemployed persons are taken from the Employment Agency and include only persons registered at the Agency.

U grupi „lica koja traže zaposlenje“ obuhvaćena su lica shodno članu 4 Zakona o zapošljavanju, stav prvi: „nezaposlenim licem, u smislu ovoga Zakona, smatra se lice od 15-65.godina života koje se nalazi na evidenciji Zavoda za zapošljavanje Crne Gore (u daljem tekstu: Zavod) i aktivno traži zaposlenje, kao i strani državljanin ili lice bez državljanstva, koji ima odobrenje za stalno nastanjenje i odobrenje za zasnivanje radnog odnosa u Crnoj Gori”.

U grupi „lica koja primaju novčanu naknadu“ obuhvaćena su lica koja shodno članu 48 Zakona o zapošljavanju Crne Gore, stav prvi: „pravo na novčanu naknadu ostvaruje osiguranik kojem je u smislu Zakona o radu prestao radni odnos bez njegovog zahtjeva, saglasnosti ili krivice, a koji je bio u radnom odnosu kod jednog ili više poslodavaca sa punim radnim vremenom najmanje 9 mjeseci neprekidno ili 12 mjeseci sa prekidima u posljednjih 18 mjeseci (u daljem tekstu: staž osiguranja), ako se prijavi Zavodu u roku od 30 dana od dana prestanka radnog odnosa“.

U grupi „nezaposlene osobe” koje su se tokom izvještajnog mjeseca prijavile na evidenciju Zavoda za zapošljavanje Crne Gore obuhvataju grupe novoprijavljenih lica”:

- Prvi put, nema zapošljavanja – odnosi se na lica koja su se prvi put prijavila na evidenciju Zavoda, a do tada nijesu bila zapošljavana;
- Prvi put, ima zapošljavanja – lica koja su se prvi put prijavila na evidenciju Zavoda, a do tada nijesu bila zapošljavana;
- Nije prvi put, nema zapošljavanja- lica koja su se više puta prijavljivala na evidenciju Zavoda, a nisu bila zapošljavana;
- Nije prvi put, ima zapošljavanja – lica koja su se više puta prijavljivala na evidenciju Zavoda, a bila su zapošljavana;

U grupi „prestanak vođenja evidencije“ obuhvaćena su lica koja shodno članu 86 Zakona o zapošljavanju, stav prvi: „evidencija o nezaposlenom licu prestaje da se vodi ako:

1. zaključi ugovor o radu sa punim radnim vremenom;
2. se odjavi iz evidencije nezaposlenih lica;
3. odbije uključivanje ili ne izvršava obaveze utvrđene ugovorom o uključivanju u program aktivne politike zapošljavanja;
4. postane vlasnik ili većinski suvlasnik preduzeća;
5. postane preduzetnik;
6. odbije odgovarajuće zaposlenje;
7. nije dalo tačne podatke o ispunjavanju uslova za sticanje statusa nezaposlenog lica;
8. navršši 65 godina života;
9. ostvari pravo na starosnu ili invalidsku penziju;
10. ostane potpuno nesposoban za rad;
11. ode na izdržavanje kazne zatvora u trajanju dužem od šest mjeseci;
12. aktivno ne traži zaposlenje;
13. je radno angažovano suprotno propisima o radnim odnosima („rad na crno“);
14. postane osiguranik – zemljoradnik, u skladu sa Zakonom o penzijskom i invalidskom osiguranju“.

## ZARADE

### Izvori podataka

Podaci o prosječnim zaradama prikazuju zarade isplaćene u mjesecu i dobijeni su iz redovnog mjesečnog istraživanja Mjesečni izvještaj o zaposlenim i zaradama (obrazac RAD-1).

*The group “persons looking for employment” includes persons defined according to the article 4, par. 1 of the Law on Employment as: “an unemployed person, according to this Law, is a person aged 15-65 which is in the records of the Employment Agency of Montenegro (furthermore: EAM) and is actively looking for employment, as well as a foreigner or a person without citizenship, who has the permission for permanent residence as well as the permission for starting work in Montenegro”.*

*The group “persons receiving social benefits” includes persons who, according to the article 4, par. 1 of the Law on Employment: “receive the monetary benefit for stopped working without person’s request, compliance or guilt, and who was working for one ore more employers the full working time for at least 9 months without a break or 12 months with breaks in the last 18 months (furthermore: duration of insurance), if he/she reports to the EAM within 30 days of stopping to work.*

*The group “unemployed persons” who reported themselves to the records of the Employment Agency of Montenegro within the reporting month includes the groups of newly reported persons:*

- *First time, no employment– refers to persons who are reported for the first time in the records of EAM, and were not previously employed;*
- *First time, with employment – persons who are reported for the first time in the records of the EAM, and used to be employed;*
- *Not-first time, no employment – persons who reported to the records of EAM several times, and were not employed;*
- *Not-first time, no employment persons who reported to the records of EAM several times, and used to be employed;*

*The group “stopped keeping records” includes persons who, according to the article 86, refer to the par. 1 of the Law on Employment: “records on the unemployed person is stopped to be kept if:*

- 1 *the person signs contract on work with full working time;*
- 2 *is signed off from the records of the unemployed persons;*
- 3 *refuses inclusion or does not perform obligations specified in the agreement on the inclusion in the programme of active employment policy;*
- 4 *becomes the owner or major co-owner of an enterprise;*
- 5 *becomes an entrepreneur;*
- 6 *refuses appropriate employment;*
- 7 *did not give correct data on meeting conditions for getting the unemployment status;*
- 8 *is 65 years old;*
- 9 *gets right to the old-age and survivor pensions;*
- 10 *is completely incapable to work;*
- 11 *is serving the imprisonment punishment longer than 6 months;*
- 12 *is not actively looking for employment;*
- 13 *is working contrary to the regulations on labour (“unregistered work”);*
- 14 *becomes insured by agriculture, in compliance with the Law on pension and disability insurance.*

## WAGES

### Data sources

*The data on average wages present wages paid out in a month, and are obtained from regular monthly survey Monthly report on employees and their earnings (questionnaire RAD-1).*

**Obuhvatnost**

Istraživanjem su obuhvaćena preduzeća, ustanove, zadruge ili organizacije, svih oblika svojine kao i njihove jedinice u sastavu, po organizaciono teritorijalnom principu, počev od nivoa opštine.

**Definicije**

Zaradu u smislu člana 65. Zakona o radu čini: zarada koju je zaposleni ostvario za obavljeni rad i vrijeme provedeno na radu, uvećana zarada, naknada zarade i druga primanja utvrđena kolektivnim ugovorom, a koja su isplaćena u većem iznosu od iznosa propisanog opštim kolektivnim ugovorom.

Zarada se uvećava u skladu sa kolektivnim ugovorom za: rad duži od punog radnog vremena; noćni rad; rad u dane državnih i vjerskih praznika koji su zakonom utvrđeni kao neradni dani; minuli rad i u drugim slučajevima utvrđenim kolektivnim ugovorom.

**Prosječna zarada izračunava se tako što se ukupno isplaćena masa zarada u mjesecu dijeli sa brojem zaposlenih na koje se odnose izvršene isplate.**

Zaradu bez poreza i doprinosa čini zarada umanjena za poreze i doprinose na teret zaposlenog.

Indeks realne prosječne zarade bez poreza i doprinosa predstavlja odnos između indeksa nominalne prosječne zarade bez poreza i doprinosa i indeksa troškova života.

**CIJENE****CIJENE PROIZVODJAČA INDUSTRIJSKIH PROIZVODA**

Pod prodajnom cijenom proizvođača industrijskih proizvoda podrazumijeva se cijena po kojoj proizvođači prodaju svoje proizvode u najvećim količinama nadomaćem tržištu. U cijenu ulazi regres koji ostvaruje prodavac a odbija se rabat, popust, kasa skonto i sl, ako ih prodavac odobrava kupcima. U cijenu ne ulazi porez na dodatu vrijednost.

Ove cijene prikupljaju se mjesečnim izvještajima koje neposredno dostavljaju izabrana preduzeća za oko 250 industrijskih proizvoda. Izbor industrijskih preduzeća izvršen je prema njihovom učešću u ukupnoj realizaciji određene oblasti.

Prosječne mjesečne cijene računaju se ponderisanjem tekućih mjesečnih cijena odgovarajućih proizvoda, a godišnje prosječne cijene proizvođača industrijskih proizvoda predstavljaju neponderisani prosjek mjesečnih cijena.

Indeksi cijena izračunavaju se ponderima na bazi podataka o realizaciji industrijske proizvodnje. Svake godine vrši se korekcija pondera, a novi ponderi izračunavaju se svake pete godine.

Indeksi cijena proizvođača industrijskih proizvoda preračunavaju se početkom svake godine na prethodnu godinu kao baznu.

**CIJENE NA MALO**

Cijene na malo su cijene po kojima trgovina na malo, individualni proizvođači i vršioci usluga prodaju svoje proizvode i usluge krajnjim potrošačima, uključujući porez na promet.

Cijene na malo prate se u četiri grada Crne Gore: Podgorici, Nikšiću, Kotoru i Pljevljima koji predstavljaju veće tržišne centre. Cijene industrijsko-neprehrambenih proizvoda snimaju

**Coverage**

*The survey covers enterprises, institutions, cooperatives or organizations as well as their composite units of all kinds of ownership, by organizational and territorial principle, starting from the level of municipality.*

**Definitions**

*Wage, according to the Article 65 of the Law on Labor, consists of wage that an employee has earned for work performed and for the time spent at work, then increased earning, compensation of the earning and other incomes established by the Collective Contract and paid in the higher amount than foreseen by the General Collective Contract.*

*The wage is increased in accordance with Collective Contract for: over working time; night work; work in state and religious holidays established by the law as non-working days; past work, and for other cases under the Collective Contract.*

***Calculation of the average earnings is done so that the total sum of all monthly earnings is divided by the number of employees to whom the paid earnings refer.***

*Net salaries and wages are tax and contributions deducted (gross) salaries and wages.*

*Index of real average earnings without taxes and contributions is the ratio between nominal average earnings index and cost of living index.*

**PRICES****PRODUCER PRICES OF INDUSTRIAL PRODUCTS**

*Producer prices of industrial products is the price according to which the producers sell their products in the most numerous quantities on the domestic market. The price also includes the regress achieved by the producer, and deduces the rebate, discounts, cash sconto, etc., if the producer approves them to the buyer. The price does not include value added tax..*

*These prices are collected through the monthly surveys submitted directly by the chosen enterprises for about 250 industrial products. The list of industrial enterprises is done on the basis of their participation in the total realization of certain area.*

*Average monthly prices are calculated by weighting the current monthly prices of corresponding products, and annual average producer prices of industrial products present the un-weighted average of the monthly prices.*

*Price indexes are calculated with weights based on the data on the total realization of industrial production. The correction of weights is done every year, and the new weights are calculated every five years.*

*Indices of producer prices of industrial products are recalculated in the beginning of each year using the previous year as the base year.*

**RETAIL PRICES**

*Retail prices are the prices that retail shops, individual producers and services providers apply in selling goods to final users including turnover tax.*

*Retail prices are surveyed in four towns of Montenegro: Podgorica, Nikšić, Kotor, and Pljevlja that represent major trade centers. The prices of industrial non-food products are*

se jedanput mjesečno u periodu od 3 - 10-og, industrijsko-prehrambenih proizvoda od 11-14-og, usluga od 14-16-og, a cijene poljoprivrednih proizvoda dva puta mjesečno i to: 1-7-og i 15-21-og u mjesecu.

Prosječne mjesečne cijene za grad kod svih proizvoda i usluga, računaju se neponderisanom aritmetičkom sredinom, dok se prosječne mjesečne cijene za Crnu Goru računaju na bazi prosječnih cijena četiri grada koje se ponderišu strukturom prometa količina realizovanih u trgovini na malo i pijaci.

Prosječne godišnje cijene industrijskih proizvoda i usluga predstavljaju neponderisani prosjek cijena za dvanaest mjeseci, a godišnje cijene poljoprivrednih proizvoda dobijaju se ponderisanjem prosječnih mjesečnih cijena podacima o prometu na malo po mjesecima.

Početkom svake godine vrši se korektura pondera na bazi rasta cijena. Indeksi cijena na malo preračunavaju se početkom svake godine na prethodnu godinu kao bazu.

## INDEKS TROŠKOVA ŽIVOTA

Indeks troškova života je poseban vid indeksa cijena na malo artikala i usluga lične potrošnje, koji se računa prema određenoj strukturi potrošnje gradskih domaćinstava.

Indeks troškova života izračunava se prema namjeni potrošnje, vremenu potrošnje (mjesečni, godišnji, višegodišnji), i podjelom na robe i usluge.

## ŠUMARSTVO

### Izvori podataka i obuhvatnost

Podaci se prikupljaju mjesečnim izvještajem ŠUM-22. Ovim izvještajem obuhvaćena su šumarska i druga preduzeća koja u državnim šumama vrše proizvodnju šumskih sortimenata, bez obzira da li im je proizvodnja šumskih sortimenata osnovna djelatnost ili nije.

### Definicije

Indeks fizičkog obima iskorišćavanja šuma obračunava se na osnovu podataka o proizvodnji šumskih sortimenata, prema nomenklaturi proizvoda i ponderacionih koeficijenata. Količine predstavljaju neto drvenu masu sortimenata izraženu u kubnim metrima. Za izračunavanje indeksa proizvodnje šumskih sortimenata kao koeficijenti ponderacije koriste se prosječne prodajne cijene proizvoda.

## INDUSTRIJA

### Izvori podataka

Prikazani podaci prikupljaju se mjesečnim izvještajima industrije na obrascu IND-1.

### Obuhvatnost

Mjesečnim izvještajem industrije obuhvataju se sva preduzeća kao i njihovi djelovi koji obavljaju industrijsku djelatnost, odnosno koji su prema Klasifikaciji djelatnosti razvrstani u sektore: Vajenje rude i kamena, Preradjivačka industrija i Proizvodnja i snabdijevanje električnom energijom, gasom i vodom. Preduzeća neindustrijskih djelatnosti su izvještajne jedinice ako u svom sastavu imaju jedinicu koja se bavi industrijskom djelatnošću.

*surveyed once in a month (in the period 3<sup>rd</sup> to 10<sup>th</sup> in a month), prices of industrial food products (11<sup>th</sup> -14<sup>th</sup> in a month), service (14<sup>th</sup> -16<sup>th</sup> in a month), and prices of agricultural products twice a month: 1<sup>st</sup> -7<sup>th</sup> and 15<sup>th</sup> -21<sup>st</sup> of a month.*

*Average monthly prices for a town for all products and services are calculated by the non-weighted arithmetic average, while average monthly prices for Montenegro are calculated on the basis of average prices for four towns weighted by the structure of turnover realized in retail trade and at the market.*

*Average annual prices for industrial products and services present non-weighted prices average for 12 months, and annual prices for agricultural products are obtained by weighting average monthly prices with the data on retail turnover by months.*

*The weights are updated by the price changes at the beginning of each year. Retail price index is recalculated at the beginning of each year relative to the previous year as a base year.*

## COSTS OF LIVING INDEX

*Costs of living index is special type of retail price index of products and services for private consumption, which is calculated by certain structure of consumption of urban households.*

*Costs of living index is calculated according to the purpose, and time of consumption (monthly, annual, and multiannual), and by the division between goods and services*

## FORESTRY

### Data sources and coverage

*The data are collected on the basis of the monthly survey ŠUM-22. This report covers forestry and other enterprises dealing with production of forest assortments in state forests, disregarding if forest assortments production is their basic activity or not.*

### Definitions

*The physical volume index of forests exploitation is calculated on the basis of data on the production of forest assortments, according to the present nomenclature of products and weights coefficients. Quantities represent net wood mass of assortments expressed in cubic meters. In order to calculate the index of forest assortments production, average purchase prices are used as weighting coefficients.*

## INDUSTRY

### Sources of data

*The shown data are collected by monthly surveys (through the questionnaire IND-1).*

### Coverage

*Monthly industry survey includes all enterprises, as well as their parts, performing the industrial activity, i.e. those that are according to the Classification of Activities classified into the following sectors: Mining and quarrying, Manufacturing, Electricity, gas, and water supply. Enterprises of non-industrial activities represent reporting units if they have in their structure a unit dealing with industrial production.*

## Nomenklatura

Proizvodnja se iskazuje prema Nomenklaturi industrijskih proizvoda, koju čine industrijski proizvodi i usluge razvrstane po djelatnostima u kojima su proizvedeni.

## Indeksi

Indeks fizičkog obima industrijske proizvodnje formiran je na osnovu podataka o količinama proizvoda i ponderacionog sistema. Podaci o količinama daju se prema Nomenklaturi proizvoda i sirovina.

Za obračun indeksa fizičkog obima industrijske proizvodnje ponderi izražavaju prosječnu dodatu vrijednost po jedinici proizvoda.

## GRADEVINARSTVO

**Izvor podataka i obuhvat** – Prikazani podaci prikupljaju se tromjesečnim izvještajem građevinarstva GRAD-31, kojim su obuhvaćena preduzeća iz oblasti građevinarstva, kao i jedinice koje obavljaju građevinsku djelatnost a nalaze se u sastavu negrađevinskih preduzeća. Podaci se prikupljaju od preduzeća iz Crne Gore kao i poslovnih jedinica stranih preduzeća koja obavljaju građevinsku djelatnost u Crnoj Gori.

**Definicije** – Vrijednost izvršenih građevinskih radova izražena je u tekućim cijenama i obuhvata sav ugrađeni građevinski materijal i utrošeni rad. Podaci o vrijednosti izvršenih građevinskih radova daju se na osnovu privremenih situacija koje ispostavljaju izvođači radova. U vrijednost nisu uključeni troškovi nabavke zemljišta, projektovanja, nadzora i PDV-a. Podaci o vrijednosti izvedenih radova odnose se na radove izvedene u izvještajnom periodu na završenim i nezavršenim građevinama.

**Broj radnika** – Obuhvata sve radnike koji na gradilištima obavljaju građevinske, instalaterske i završne radove, bez obzira na kvalifikaciju, vrstu radnog odnosa (ugovor o radu, ugovor o djelu, iznajmljeni radnici itd.) i dužinu rada na gradilištima. Nijesu uključeni zaposleni koji rade na inženjersko-tehničkim, administrativnim i rukovodećim poslovima.

**Izvršeni efektivni časovi rada** – Obuhvataju stvarno odrađene časove radnika angažovanih na gradilištima u redovnom radnom vremenu kao i u prekovremenim satima.

**Nove narudžbe** – Predstavljaju ukupnu vrijednost ugovorenih radova između proizvođača i treće strane na osnovu zaključenog ugovora.

## SPOLJNA TRGOVINA

### Izvori i metodi prikupljanja podataka

Izvor podataka za statistiku spoljne trgovine je Jedinствена Carinska Isprava o izvozu i uvozu robe, koju prilikom carinjenja robe, u ime preduzeća, podnose carinarnicama špediterska preduzeća koja imaju dispoziciju carinskog obveznika.

### Obuhvatnost

Pri izvozu obuhvata se sva roba koja potiče iz domaće odnosno proizvodnje iz unutrašnjeg robnog prometa uključujući i tzv. nacionalizovanu robu (roba koja je bila uvezena i ocarinjena, pa se u nepromijenjenom ili doradenom stanju izvozi kao roba porijekla iz Crne Gore na strano tržište). Uvoz obuhvata svu robu uvezenu iz inostranstva koja je ocarinjena i puštena u unutrašnji promet u cilju reprodukcije, investicija ili široke potrošnje.

## Nomenclature

*The production is presented according to the Nomenclature of industrial products, including industrial products and services structured according to the activities in which they were produced.*

## Indices

*Index of physical scope of industrial production is formed on the basis of data on product quantities and weighting system. The data are provided according to the Nomenclature of products and raw materials. In the calculation of the index of physical scope of industrial production, the weights express the average value added per product unit.*

## CONSTRUCTION

**Source of data and coverage** – Presented data are collected through a quarterly survey in construction GRAD-31, which include enterprises in construction, as well as units performing the activity in construction and are within non-construction enterprises. Data are collected from enterprises from Montenegro as well as the business units of foreign enterprises performing construction activity in Montenegro.

**Definitions** – Value of finalized construction works is given at current prices and includes all built material and performed work. Data about the value of finalized construction works is given on the basis of temporary situations given by contractors. The value does not include costs of buying the land, engineering, monitoring and VAT. The data on value of finalized work refer to works performed in the reporting period on finished and non-finished construction sites.

**Number of workers** – Includes all workers who at the construction site perform the construction, installation and final works, no matter to qualification, the type of working contract (contract on work, contract on task, rented workers, etc.) and the duration of work at the construction site. It does not include employees working on engineering-technical, administrative and managerial positions.

**Effective working hours** – include really performed working hours of workers engaged in the regular working hours, as well as overtime work.

**New orders** – present the total value of contracted works between producer and third party based on the concluded report.

## EXTERNAL TRADE

### Sources and methods of data collection

*Data source for external trade statistics is Single Administrative Document on import and export of goods, submitted, on behalf of enterprises, by shipping agents having the disposition of Custom tributary.*

### Coverage

*Export covers all goods of domestic i.e. internal production origin, including so-called nationalized merchandise, (imported goods cleared through the customs, and unchanged exported as goods of Montenegro origin). Import covers all merchandise imported, cleared through the customs, and put on domestic market for reproduction, investment or consumption purposes.*

Uključene su i isporuke raznih dobrotvornih organizacija i privatne poklon pošiljke.

Od januara 2008. god. MONSTAT je u skladu, sa preporukama UN-a i EUROSTAT-a primenio opšti i specijalni trgovinski sistem.

MONSTAT je do sada koristio ublaženu definiciju specijalnog sistema trgovine. Svjesni ograničenja ublažene definicije

specijalnog sistema trgovine, u rezultate spoljnotrgovinske razmjene uključen je i ponovni izvoz robe iz carinskih skladišta i slobodnih carinskih zona koji se registruje po opštem sistemu trgovine.

**Opšti sistem trgovine** koristi se u slučajevima kada se statistička teritorija zemlje poklapa s njenom ekonomskom teritorijom. Prema tome, opšti sistem trgovine predstavlja širi koncept i kod uvoza obuhvata svu robu koja ulazi na ekonomsku teritoriju zemlje koja prikuplja podatke, sa izuzetkom robe koja je u tranzitu, a kod izvoza obuhvata svu robu koja napušta ekonomsku teritoriju zemlje koja prikuplja podatke, sa izuzetkom robe koja je u tranzitu.

**Sistem specijalne trgovine** predstavlja užu koncept i koristi se u slučajevima kada se statistička teritorija zemlje poklapa samo sa određenim dijelom njene ekonomske teritorije. Stroga definicija specijalnog sistema trgovine koristi se kada statistička teritorija obuhvata samo slobodno cirkulirajuće područje u okviru koga roba može biti raspoloživa bez carinskih ograničenja, to znači da je ona prošla carinski postupak i da se koristi za domaću upotrebu u cilju reprodukcije, široke potrošnje i investicije. Izvoz obuhvata svu robu koja napušta slobodno cirkulirajuće područje zemlje koja prikuplja podatke.

## Definicije

*Vrijednost robe* u spoljnoj trgovini iskazana je na osnovu cijena koje su postigla preduzeća prilikom sklapanja ugovora. Sve vrijednosti obračunate su na bazi pariteta franko granice Crne Gore: FOB-cijene za izvoz, CIF-cijene za uvoz.

Statistička vrijednost robe koja se izvozi jeste fakturna vrijednost robe. Statistička vrijednost robe koja se uvozi jeste vrijednost koja predstavlja carinsku osnovicu. Podaci o vrijednosti su obračunati po tekućim kursovima koji se primjenjuju za utvrđivanje carinske osnovice. Po tekućim kursovima koji se primjenjuju za utvrđivanje carinske osnovice takođe je izvršen obračun troškova transporta, osiguranja, pretovara i sl. koji se plaćaju u stranoj valuti.

Registracija podataka spoljne trgovine po zemljama vrši se po principu zemlje namjene kod izvoza i zemlje porijekla kod uvoza. To znači da se pri izvozu registruje zemlja u kojoj se roba troši i dalje prerađuje, a pri uvozu ona zemlja u kojoj je roba proizvodnjom dovedena u stanje u kome se uvozi

## UNUTRAŠNJA TRGOVINA

### Izvori podataka

Podaci o unutrašnjoj trgovini preduzeća koja se bave trgovinom na malo, prikupljaju se redovnim mjesečnim istraživanjem. Istraživanje je na bazi uzorka i obuhvaćena su preduzeća koja su u Registru jedinica razvrstavanja prema klasifikaciji djelatnosti razvrstana u sektor trgovine.

Podaci o prodaji i otkupu proizvoda poljoprivrede, šumarstva i ribarstva prikupljaju se mjesečnim izvještajima o realizaciji poljoprivrednih proizvoda sopstvene proizvodnje poljoprivrednih preduzeća i zemljoradničkih zadruga i mjesečnim izvještajem o otkupu poljoprivrednih proizvoda od individualnih gazdinstava.

*Deliveries of various charity organizations and private gifts are also included.*

*Due to the recommendations of UN and EUROSTAT, MONSTAT has since January 2008 applied the general and special trade systems.*

*So far MONSTAT was using the reduced definition of the special trade system. Being aware of the limitations of the reduced definition of special trade system, the results of external trade include the re-export of goods from customs warehouses and free customs zones which is registered according to general trade system.*

**General trade system** is used in cases when the statistical territory matches with its economic territory. Accordingly, the general trade system presents the wider concept and in import it includes all goods coming in the economic territory of the country which collects data, with the exception of goods in transit, and in export it includes all goods leaving the economic territory of the country which collects data, with the exception of goods in transit.

**Special trade system** presents the narrow concept and is used in cases when the statistical territory of the country matches only with the certain part of its economic territory. The strict definition of the special trade system is used when the statistical territory includes only the free circulating area in which the goods can be available without the customs limitations, which means that it went through the customs procedure and that it is used for domestic use for the purpose of reproduction, wider consumption and investments.

*The export includes all goods which leaves the free circulating area of the country which collects the data.*

## Definitions

*Value of goods in external trade statistics is shown on the basis of prices fixed by organizations and enterprises by contractual stipulation. All values have been calculated on the basis of parity free on Montenegrin border, i.e. F.O.B. export prices and C.I.F. import prices.*

*Statistical value of goods being exported is the invoice value of goods. Statistical value of goods being imported is the value representing customs base. Data on values are calculated on the basis of exchange rates applied for establishing customs base. Costs of transport, insurance and reloading, etc. paid in foreign currency are calculated at current exchange rates applied for establishing customs base.*

*Registration of external trade data by country is carried out according to principle of destination country for the export and origin country for the import. It means that, in case of export, the country in which goods are consumed or further processed is registered, and in case of import – the country where the goods have been produced in the condition in which they have been imported.*

## INTERNAL TRADE

### Sources of data

*Data of internal trade of enterprises dealing with retail trade are collected through regular monthly survey. The survey is sample based and includes all enterprises which are in the Administrative register classified in the sector Trade.*

*Data about sales and buy out of products in agriculture, forestry and fishery are collected through monthly reports on realization of agricultural products of own production of agricultural enterprises and cooperatives and through monthly report on buying out of agricultural products from individual holdings.*

**Obuhvatnost**

Statistika unutrašnje trgovine obuhvata i prikazuje promet preduzeća čija je osnovna djelatnost trgovina na malo.

Mjesečnim izvještajima o prodaji i otkupu proizvoda poljoprivrede, šumarstva i ribarstva obuhvaćena su poljoprivredna preduzeća, zemljoradničke zadruge kao i druga preduzeća koja su ovlaštena da vrše otkup proizvoda od individualnih gazdinstava u cilju dalje prerade ili prodaje.

**Definicije**

Promet robe u trgovini na malo predstavlja vrijednost prodane robe preduzeća na malo koja je prodana krajnjim potrošačima, odnosno stanovništvu za ličnu potrošnju i upotrebu u domaćinstvu, kao i pravnim i fizičkim licima za obavljanje djelatnosti.

Podaci o prodaji i otkupu proizvoda poljoprivrede, šumarstva i ribarstva obuhvataju vrijednost prodaje proizvoda iz sopstvene proizvodnje preduzeća i zadruga kao i otkup vrijednosti proizvoda od individualnih gazdinstava, koje vrše zato ovlaštene organizacije u cilju dalje prerade ili prodaje.

**UGOSTITELJSTVO****Izvori podataka i obuhvatnost**

Podaci o ostvarenom prometu u ugostiteljstvu po mjesecima, se procjenjuje na osnovu ocjene trenda prometa, dok se ne dobiju rezultati redovnog tromjesečnog istraživanja, ugostiteljstva. Mjesečne procjene se koriguju na osnovu dobijenih rezultata.

Podaci o prometu u ugostiteljstvu prikupljaju se tromjesečnom izvještajnom službom za ugostiteljska preduzeća, po grupama usluga. Godišnjom izvještajnom službom prate se ugostiteljska preduzeća i preduzetnici. Mjesečni podaci ne obuhvataju promet preduzetnika.

**Definicije**

Prikazani promet u ugostiteljstvu predstavlja vrijednost izvršenih ugostiteljskih usluga koje obuhvataju usluge smještaja, ishrane, točenja pića, kao i druge usluge koje se uobičajeno obavljaju u ugostiteljstvu.

**TURIZAM****Izvori podataka i obuhvatnost**

Podaci o broju dolazaka turista i noćenja prikupljeni su redovnim mjesečnim izvještajem (obrazac TU-11). Izvještaji se sastavljaju na osnovi evidencija u knjigama gostiju. Istraživanje se sprovodi na bazi potpunog obuhvata.

**Definicije**

**Izvještajne jedinice** jesu svi poslovni subjekti (preduzeća/trgovačka društva, zadruge, ustanove, itd.) i njihovi dijelovi koji obavljaju djelatnost pružanja usluga smještaja turistima; zdravstvene ustanove za svoje objekte u kojima osobe borave radi medicinske rehabilitacije (osobe same snose naknadu za taj boravak); poslovni subjekti i njihovi dijelovi koji se bave posredovanjem u pružanju smještajnih usluga (putničke agencije); poslovni subjekti koji se bave posredovanjem u smještaju gostiju u seoskim kućanstvima; turističke zajednice i druga nadležna tijela za privatne sobe, apartmane ili kuće koje neposredno iznajmljuju turisti; poslovni subjekti i njihovi dijelovi za svoja odmarališta; poslovni subjekti koji su osnovali ili vode brigu i nadzor nad planinarskim domovima; vojne ustanove za svoje ugostiteljske objekte za smještaj gostiju; pos-

**Coverage**

*Statistics of internal trade covers and presents the turnover of enterprises whose primary activity is retail trade.*

*Monthly survey on sales and buying out of products in agriculture, forestry and fishing covers agricultural enterprises, agricultural cooperatives, as well as other enterprises authorized to do the buying out of products from individual holdings for future processing or sale.*

**Definitions**

*Turnover of goods in retail trade is the retail value of goods of an enterprise sold to final users, i.e., the population for personal consumption and use in household, as well as to private and physical persons for performing the activity.*

*Data on sales and buying out of products in agriculture, forestry and fishing cover the value of sale of products from own production of enterprises and cooperatives as well as the buying out of value of products from individual holdings, performed by authorized agencies for further processing or sale.*

**CATERING****Sources of data and coverage**

*Data on realized turnover in catering by month are estimated on the basis of estimate of trend of turnover, until the results of the regular quarterly survey in catering are received. Monthly estimates are corrected on the basis of received results.*

*Data on turnover in catering are collected through quarterly survey survey for enterprises in catering, by groups of services. The annual survey collects data on enterprises in catering and entrepreneurs. Monthly data do not include turnover of entrepreneurs.*

**Definitions**

*Presented turnover in catering presents the value of performed catering services including the services of accommodation, food, pouring beverages, as well as other services usually performed in catering.*

**TOURISM****Sources of data and coverage**

*Data about arrivals of tourists and overnight stays are collected through regular monthly survey (form TU-11). The reports are compiled on the basis of records in the guest books. The survey is conducted on the basis of full coverage.*

**Definitions**

*Reporting units are all business subjects (enterprises/trade companies, cooperatives, institutions, etc.) and their parts performing activity of providing accommodation services to tourists; health institutions for their objects attended by persons for medical rehabilitation (persons pay by themselves for the stay); business subjects and their parts dealing with intermediation in providing accommodation services (travel agencies); business subjects dealing with intermediation in accommodation of guests in village houses; tourist unions and other competent bodies for private rooms, apartments or houses directly rented by tourists; business subjects and their parts for their resorts; business subjects which founded or take care of mountain lodgings; military institutions for their catering objects for accommodation of guests; business subjects which are during*



lovni subjekti koji se za vrijeme školskih praznika koriste školama, domovima i sličnim objektima kao privremenim smještajnim kapacitetima; Istraživanjem su obuhvaćene sve pravne osobe i njihovi djelovi te fizičke osobe koje iznajmljuju smještajne objekte turistima (komercijalni objekti).

**Turist** je svaka osoba koja u mjestu van svog prebivališta provede najmanje jednu noć u ugostiteljskom ili drugom objektu za smještaj turista radi odmora ili rekreacije, zdravlja, studija, sporta, religije, porodice, poslova, javnih misija ili skupova.

U turiste se ne uključuju migranti, pogranični radnici, diplomati, članovi vojnih snaga na redovnim zadacima, izbjeglice, itd.

**Prebivalište** je mjesto u kojem se osoba nastanila s namjerom da u njemu stalno živi. Turist je registrovan u svakom mjestu ili objektu u kojem boravi i zbog toga, u slučaju promjene mjesta ili objekta, dolazi do njegova ponovnog iskazivanja, a time i do dvostrukosti u podacima. Prema tome, statistika evidentira broj dolazaka turista, a ne broj turista.

## SAOBRAĆAJ, SKLADIŠTENJE I VEZE

Podaci o prevozu putnika i robe u unutrašnjem, pomorskom, vazdušnom i drumskom saobraćaju odnose se na prevoz koji obavljaju saobraćajna preduzeća registrovana u saobraćajnoj djelatnosti, bez obzira da li prevoz obavljaju unutar ili van granica naše zemlje za račun domaćeg ili inostranog korisnika.

Podaci se prikupljaju redovnim mjesečnim i godišnjim statističkim izvještajima saobraćajnih preduzeća.

### Željeznički saobraćaj

Prevezeni putnici u unutrašnjem saobraćaju obuhvataju otputovala putnike, otputovala putnike u inostranstvo, prispijele iz inostranstva i putnike u tranzitu. Prevezeni teret obuhvata utovarenu robu u unutrašnjem i u međunarodnom saobraćaju: uvoz, izvoz i tranzit.

### Promet na aerodromima

Podaci o prometu putnika i robe na aerodromima dobijeni su na osnovu redovnih mjesečnih i godišnjih izvještaja preduzeća za aerodromske usluge i obuhvataju kompletan promet, odnosno i domaće i strane avione.

### Drumski saobraćaj

Podaci o prevozu odnose se na rad domaćih preduzeća drumskog saobraćaja u unutrašnjem i međunarodnom prevozu putnika i tereta.

### Gradski saobraćaj

Obuhvaćen je prevoz putnika koji obavljaju saobraćajne organizacije u gradskom i prigradskom saobraćaju

### Poštanski saobraćaj

Poštanski saobraćaj obuhvata: Poštanske usluge, telegrafске i telefonske usluge. Poštanske aktivnosti obuhvataju sljedeće usluge: prenos pismonosnih i paketnih pošiljki i usluge platnog prometa.

Pismonosne pošiljke odnose se na otpremljena pisma, dopisnice, novine i časopise, preporuke i vrijednosna pisma u unutrašnjem prometu, a u međunarodnom prometu i u prispijeću. Tranzit nije obuhvaćen.

*school holidays used by schools, hostels and similar objects as temporary placing capacities. The survey covers all legal persons and their parts as well as persons renting accommodation to tourists (commercial objects).*

***Tourist** is a person who spends at least one night in an accommodation facility or some other object for accommodation of tourists, in a place other than his/her place of permanent residence for the reason of vacation or recreation, health, studies, sports, religion, family, business, public missions or meetings. Tourists do not include migrants, border workers, diplomats, members of military force in the regular duty, refugees, etc.*

***Residence** is the place where the person is settled intending to permanently live in it. Tourist is registered in a place or object where it resides and due to it, in the case of change of place or object, the double reporting may appear, which may lead to the double data. There the statistic records the arrivals of tourists, and not the number of tourists.*

## TRANSPORT, STORAGE AND COMMUNICATIONS

*Data on the transport of passengers and goods in the internal, marine, air and road transport refer to the transport performed by transport enterprises registered in transport activities, no matter whether the transport is done inside or outside the borders of our country on the account of domestic or foreign user.*

*Data are collected through regular monthly or annual statistical surveys from reports of transport enterprises.*

### Railway transport

*Passengers transported in domestic transport include departed passengers, passengers departed abroad, passengers who arrived from abroad and passengers in transit. Transported cargo includes loaded goods in domestic and international transport: import, export and transit.*

### Traffic in airports

*Data about traffic of passengers and goods in airports are received on the basis of regular monthly and annual reports of enterprises for airport services and they cover complete traffic, i.e., both domestic and foreign airplanes.*

### Road transport

*Data about transport refer to the work of domestic enterprises of road transport in internal and international transport of passengers and cargo.*

### Local transport

*It includes the transport of passengers performed by transport organizations in local and commuter services.*

### Postal communications

*Postal communications include: Postal services, telegraphic and telephone services. Postal activities include the following services: transport of letter mail and services of balance of payments.*

*Letter mail refers only to mail sent, postal cards, newspaper and magazines, registered and value letters in domestic transport, as well as for the receiving in the international communications. The transit is not included.*

Platni promet obuhvata uplate poštanskim uputnicama, po žiro i tekućim računima i računskim knjižicama, isplate međunarodnim poštanskim uputnicama i žiro i tekućim računima i računskim i invalidskim knjižicama.

Telegrafske usluge obuhvataju otpremu telegrama u unutrašnjem prometu i prometu sa inostranstvom, uključujući i tranzit.

Telefonske usluge obuhvataju fiksnu i mobilnu mrežu i prikazuju se u onim jedinicama koje se i koriste u tehničkom smislu-minutima.

## MONETARNI AGREGATI

### Izvori podataka

Za izradu monetarne statistike su: bilansi Centralne banke Crne Gore i bilansi banaka. Banke dostavljaju podatke u skladu sa Odlukom o izvještajima koje banke dostavljaju Centralnoj banci Crne Gore.

Za prikupljanje i obradu podataka monetarne statistike nadležna ja Centralna banka Crne Gore.

### Definicije

**Monetarnu bazu (M0)** čine depoziti banaka kod CBCG (obračunski račun banaka i izdvojena obavezna rezerva - do januara 2008. bez dijela koji banke drže u državnim zapisima ) i procijenjeni iznos gotovog novca u opticaju.

**Monetarni agregat (M1)** čine M0, depoziti po viđenju nebankarskog sektora kod banaka i CBCG, u eurima i drugim valutama, isključujući depozite centralne Vlade.

**Monetarni agregat (M11)** čini M11 uvećan za depozite centralne Vlade po viđenju, u eurima i drugim valutama.

**Monetarni agregat (M2)** čine M1 i oročeni depoziti nebankarskog sektora kod banaka i CBCG, u eurima i drugim valutama, isključujući depozite centralne Vlade.

**Monetarni agregat (M21)** čini M11 uvećan za oročene depozite (uključujući depozite centralne Vlade), u eurima i drugim valutama.

**Depoziti stanovništva** – u tabeli je prikazano stanje ukupnih depozita fizičkih lica kod banaka na kraju perioda i njihova struktura po ročnosti.

## PLATNI BILANS CRNE GORE

Bilans plaćanja sastavlja se u skladu sa metodologijom koju je preporučio Međunarodni monetarni fond (Balance of payments Manual, fifth edition, 1993). Izvori podataka su: Republička uprava carina Crne Gore, MONSTAT, Elektroprivreda Crne Gore, Ministarstvo finansija, poslovne banke i CBCG. Bilans plaćanja se iskazuje u eurima. Preračunavanje vrijednosti transakcija iz originalnih valuta u izvještajnu valutu obavlja se: primjenom srednjih kurseva CBCG na dan transakcije, primjenom mjesečnih i godišnjih srednjih prosječnih kurseva CBCG, primjenom srednjeg dnevnog kursa na kraju perioda kod procjene transakcija čija se razlika stanja prati.

Početkom 2005. godine izvršena je revizija podataka koji se odnose na 2004. godinu. Naime, tokom 2004. godine postalo je tehnički moguće pratiti robne transakcije između Crne Gore i Srbije na osnovu podataka Republičke uprave carina Crne Gore, odnosno carinskih deklaracija. Do 2004. godine izvor za praćenje ovih tokova su bili jedino podaci poslovnih banaka o ostvarenom platnom prometu sa inostranstvom, odnosno ITRS.

*Balance of payment includes payments made by postal money orders, by giro and current accounts and account booklets, payments by international postal money orders and giro and current accounts and account and disability booklets.*

*Telegraph services refer to sending of telegrams in the country as well as to foreign countries, including the transit.*

*Telephone services include fixed and mobile networks and are presented in the units used in the technical sense -minutes.*

## MONETARY AGGREGATS

### The sources of data

*For preparation of monetary statistics are: the balance sheets of the Central Bank of Montenegro and of banks. Banks submit their data according to the Decision on reports that banks submit to the Central Bank of Montenegro.*

*The Central Bank of Montenegro is responsible for the collection and processing of the data of monetary statistics.*

### Definitions

**Monetary base (M0)** comprises banks' deposits in the CBM -Payment Operations (banks' giro accounts and allocated reserve requirement until January 2008, excluding the part which banks keep as treasury bills) and the estimated amount of cash in circulation.

**Monetary aggregate (M1)** comprises M0, demand deposits by the non-banking sector with banks and the CBM, in EUR and other currencies, excluding deposits of the central Government.

**Monetary aggregate (M11)** comprises M1 plus the central Government's demand deposits in EUR and other currencies.

**Monetary aggregate (M2)** includes M1 and non-banking sector's time deposits with banks and CBM, in EUR and other currencies, excluding deposits of the central Government.

**Monetary aggregate (M21)** comprises M11 plus the central Government's time deposits in EUR and other currencies.

**Deposits by households** – the table present the balance of total deposits of individuals by households at the end of period and their structure by time.

## THE BALANCE OF PAYMENT OF MONTENEGRO

*The balance of payments is prepared according to the methodology prescribed by the International Monetary Fund (Balance of Payment, 1993). The sources of data are: Custom Administration of Montenegro, MONSTAT, Montenegrin Electric Enterprise, the Ministry of Finance, commercial banks, and the Central Bank of Montenegro. The balance of payments is presented in EUR. Recalculation of the transaction values from the original currency to the reporting currency is performed by: using the mean exchange rate from the Central Bank of Montenegro and at the end of the period with evaluation transactions whose change is monitored using daily mean exchange rate.*

*The revision of data referring to 2004 was done in the beginning of 2005. Namely, it was technically possible in 2004 to follow transaction of goods between Montenegro and Serbia on the basis of data from Customs Administration of Montenegro i.e., the customs declarations. Until 2004 the source for viewing these currents was only data of banks about the achieved balance of payments with foreign countries, i.e., ITRS.*

Izvor podataka o spoljnoj trgovini od 2005. godine je Monstat. CBCG vrši prilagođavanje podataka dobijenih od statistike spoljne trgovine u cilju njihovog usklađivanja sa metodologijom MMF-a (Balance of Payments Manual, Fifth edition, IMF, 1993).

Kod evidencije transportnih usluga koriste se podaci banaka o ostvarenom platnom prometu sa inostranstvom.

Prihodi od **putovanja** obuhvataju procijenjene prihode od turizma, koji se dopunjavaju sa podacima o pruženim zdravstveno-rekreativnim uslugama i potrošnjom u cilju školovanja. Do prihoda od turizma se dolazi na osnovu broja noćenja (podatak MONSTAT-a) i procijenjene prosječne dnevne potrošnje. Početkom 2006. godine korigovan je model za procjenu prihoda od turizma, korekcija se odnosi na 2003. i 2004. godinu. Podaci o rashodima za turizam dobijaju se na osnovu ostvarenog platnog prometa sa inostranstvom.

Finansijske usluge (usluge osiguranje i reosiguranja, zastupnička i posrednička provizija i provizija i troškovi u bankarskom poslovanju) se prate na osnovu statistike platnog prometa sa inostranstvom. Ostale usluge obuhvataju građevinske usluge, ptt i komunikacijske usluge, usluge osiguranja, kompjuterske i informacione usluge, autorska prava i honorare od izdavanja dozvola i ostale poslovne usluge. Podaci o njima se dobijaju iz statistike platnog prometa sa inostranstvom, a na osnovu izvještaja banaka.

Račun dohotka uključuje podatke iz statistike platnog prometa sa inostranstvom o kompenzacijama, zaposlenima, plaćanjima i naplatama po osnovu kamata, plaćenim i naplaćenim dividendama. Izvor podataka su izvještaji banaka i CBCG.

Tekući transferi obuhvataju podatke o transferima sektora vlade i ostalih sektora koji se dobijaju iz statistike platnog prometa sa inostranstvom.

Direktne i portfolio investicije prate se na osnovu podataka statistike platnog prometa sa inostranstvom i sprovedenih anketa. Ostale investicije koje obuhvataju podatke o kreditima, trgovinskim kreditima, gotovini i depozitima se dobijaju iz statistike platnog prometa sa inostranstvom.

Rezerve Centralne banke Crne Gore obuhvataju sredstva komercijalnih banaka deponovana kod ino banaka, sredstva Centralne banke deponovana kod ino banaka, sredstva u trezoru CBCG i rezervne pozicije kod MMF-a. Izvor podataka je CBCG (monetarna statistika).

*Since 2005, the source of data about external trade is Monstat. CBM makes adjustments of data received from external trade statistics in order to harmonize them with the IMF methodology (Balance of Payments Manual, Fifth edition, IMF, 1993).*

*The registering of transportation services uses banks' data on performed international payment operations.*

*Incomes from travelling include estimated incomes from tourism, which are supplemented by data on provided health-recreation services and expenditures for education. Data on expenditures in tourism are obtained on the basis of the number of tourist overnight stays (data from MONSTAT) and estimated average daily consumption.*

*The model for estimation of incomes from tourism was modified in the beginning of 2006, and the correction refers to 2003 and 2004. Data on expenditures in tourism are obtained on the basis of international payment operations.*

*Financial services (insurance and reinsurance, representative and mediation commission fees, and commission fees and expenses for banking operations) are covered on the basis of foreign payment operations statistics. Other services include investment work in foreign countries, PTT and communication services, forwarding services, expenses for the maintenance of representative offices, computer and information technology services, author's fee, and fee for license issuance, as well as other business services. The data is obtained from foreign payment operations statistics and banks' reports.*

*Income statement comprises data from foreign payment operations statistics on compensations to employees, payments, and charged dividends. The source of data is banks' reports.*

*Current transfers include data about transfers of Government sector and other sectors received from balance of payment with foreign countries.*

*Direct and portfolio investments are followed on the basis of data of international payment operations statistics and conducted surveys. Other investments include data about loans, trade loans, cash and deposits and are obtained from the balance of payment statistics with foreign countries.*

*The Central Bank of Montenegro's reserves comprise commercial banks' fund deposited in international bank and the CBM funds deposited in foreign banks, funds in the CBM treasury and reserve positions in IMF. The source of data is CBM (monetary statistics).*

REDAKCIJA / EDITORIAL BOARD :

RAJKO LAKOVIĆ, rukovodilac / coordinator  
Mr.Gordana Radojević, Gojko Dragaš, Branka Šušić – Radovanović,  
Radmila Šišević, Darko Krkeljić

Tehnički urednik / *Editor* : Radmila Šišević  
Grafički prikazi / *Graphs* : Radmila Šišević  
Prevod / *Translated by*: Katarina Bigović

IZDAJE I ŠTAMPA: Zavod za statistiku Crne Gore – MONSTAT, Podgorica, IV Proleterske br. 2  
Prilikom korišćenja navesti izvor – preporučuje se skraćenica – MSP, br.- /2008

ODGOVARA: Radomir Đurović, direktor.

Izlazi 25-og u mjesecu. Tiraž 150 primjeraka. Prodajno odjeljenje: Tel: +382 81 248-116

*PUBLISHED AND PRINTED BY: Statistical Office of Montenegro – MONSTAT, Podgorica, IV Proleterske no. 2*  
*Data using is subject to quoting source – abbreviation recommended: MSR, no. -/2008*

*RESPONSIBLE: Radomir Đurović, Director.*

*Issued on 25<sup>th</sup> in a month. Circulation 150 copies. Department of sales: +382 81 248-116*

E-mail: [statistika@cg.yu](mailto:statistika@cg.yu) Web Site: [www.monstat.cg.yu](http://www.monstat.cg.yu)