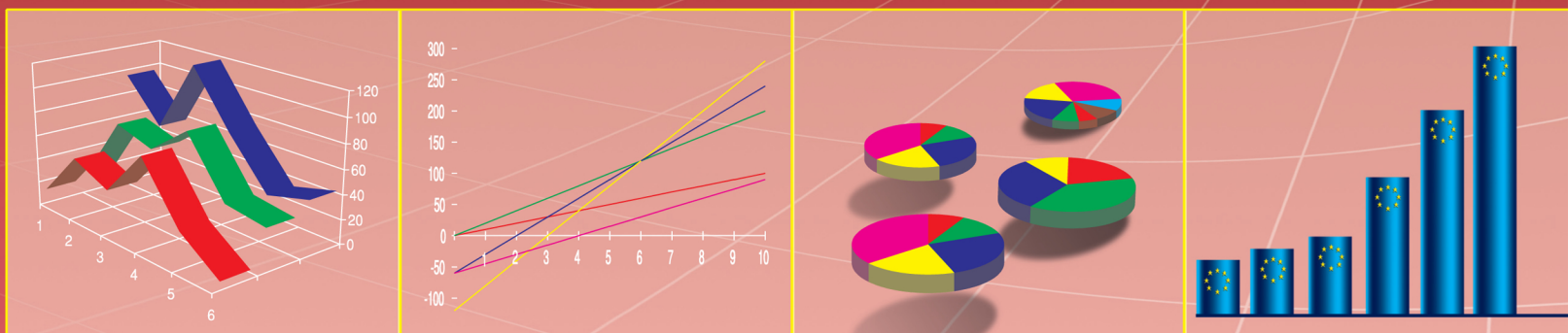


MJESEČNI STATISTIČKI PREGLED MONTHLY STATISTICAL REVIEW



2008

2

ZAVOD ZA STATISTIKU CRNE GORE
STATISTICAL OFFICE OF MONTENEGRO

GODINA LVI / YEAR (56)

ISSN 0354-365X

MJESEČNI STATISTIČKI PREGLED
MONTHLY STATISTICAL REVIEW

2008
2

PODGORICA, 2008

IZDAJE I ŠTAMPA: Zavod za statistiku Crne Gore - MONSTAT
PUBLISHED AND PRINTED BY: Statistical Office of Montenegro - MONSTAT

ODGOVARA: Radomir Đurović, direktor
RESPONSIBLE: Radomir Đurović, Director

Podgorica, IV Proleterske br. 2, Tel: +382 81 241-206
E-mail: statistika@cg.yu Web Site: www.monstat.cg.yu

CIP – Katalogizacija u publikaciji
Centralna narodna biblioteka Crne Gore, Cetinje
311 / 314

Mjesečni statistički pregled = Monthly
Statistical review. Urednik Rajko Laković. – God.
1, br.1 (1953) – - Podgorica (IV Proleterske br. 2)
Zavod za statistiku Crne Gore – Monstat, 1992 (Podgorica:
Zavod za statistiku Crne Gore) . – 30 cm

Mjesečno. – je nastavak: Mjesečni statistički pregled
NR Crne Gore (Titograd) = ISSN 0544-912X
ISSN 0354-365X = Mjesečni statistički pregled (Podgorica)
COBISS. CG ID 07622928

UVOD

U MJESEČNOM STATISTIČKOM PREGLEDU Zavod za statistiku – MONSTAT objavljuje podatke za Crnu Goru. To su službeni statistički podaci koji se prikupljaju i obrađuju u skladu sa programom statističkih istraživanja i rezultat su rada zvaničnih statističkih službi.

Statistički podaci u MJESEČNOM STATISTIČKOM PREGLEDU prikazani su u godišnjim, kvartalnim i mjesečnim serijama i sistematizovani su u dva dijela. Godišnje serije obuhvataju tri do pet posljednjih uzastopnih godina. Kvartalne serije se odnose na kvartale u prošloj i tekućoj godini, a mjesečne serije obuhvataju period od trinaest mjeseci iz tekuće i prethodne godine. Ispod odgovarajućih tabela, gdje je potrebno, daju se kratka objašnjenja.

Pored podataka koje prikuplja i obrađuje Zavod za statistiku Crne Gore - MONSTAT, u ovom broju PREGLEDA su objavljeni i podaci Zavoda za zapošljavanje i Centralne Banke Crne Gore.

Podaci za tekuću godinu su obično prethodni, pa su moguće manje greške koje se postepeno ispravljaju u narednim brojevima i obilježavaju se zvjezdicom, u onom broju PREGLEDA u kojem je izvršena ispravka.

Sadržaj publikacije je prilagođen međunarodnim potrebama i obavezama u smislu primjene Klasifikacije djelatnosti (NACE Rev1), koja se primjenjuje od 01.01.2001. godine.

Od januara 2008. godine MJESEČNI STATISTIČKI PREGLED je obogaćen novim sadržajima i preveden je na engleski jezik.

INTRODUCTION

Statistical Office of Montenegro publishes statistical data for Montenegro in the MONTHLY STATISTICAL REVIEW. These are the official statistical data collected and processed according to the Programme of Statistical Surveys as the result of official statistical services.

Statistical data in the MONTHLY STATISTICAL REVIEW are presented in annual, quarterly and monthly series and are systemized in two parts. The Annual series of data cover 3-5 last consecutive years. Quarterly series refer to quarters in the previous and current year, and monthly series include period of thirteen months from the previous and current year. Where necessary, short explanations are given below the tables.

Besides data collected by the Statistical Office of Montenegro - MONSTAT, this issue of MONTHLY STATISTICAL REVIEW also publishes data from Employment Agency and Central Bank of Montenegro.

Data for the current year are usually preliminary, so minor errors are possible and are gradually corrected in the following numbers, and they are marked with the small star in the number of the MONTHLY STATISTICAL REVIEW where the correction has been made.

The contents of the publication is adapted to the international needs and obligations regarding the application of the Classification of Activities (NACE, REV1), used since January 2001.

Since January 2008, the MONTHLY STATISTICAL REVIEW contains new contents and has been translated into English language.

ZNACI

SYMBOLS

nema pojave	=	—	=	No occurrence of event
ne raspolaze se podatkom	=	...	=	Data not available
podatak je manji od 0,5 date jedinice mjere	=	0	=	Value not zero but less than 0,5 of the unit of E
prosjeak	=	Ø	=	Average
ispravljen podatak	=	*	=	Corrected data
nepotpun, odnosno nedovoljno provjeren podatak	=	()	=	Incomplete or insufficiently checked data

SADRŽAJ

UVOD	3
SADRŽAJ	5
OPŠTI PREGLED INDEKSA	
Kvartalni indeksi	7
Mjesečni indeksi.....	8
STANOVNIŠTVO	
Prirodno kretanje stanovništva.....	10
Prirodno kretanje stanovništva po opštinama	11
Kretanje stanovništva unutar Crne Gore po opštinama	12
ZAPOSLENOST I ZARADE	
Zaposleni po sektorima djelatnosti	13
Zaposleni po opštinama	14
Nezaposlena lica.....	15
Prosječne zarade po sektorima djelatnosti	16
Prosječne zarade bez poreza i doprinosa po sektorima djelatnosti	17
Indeksi prosječnih zarada po sektorima djelatnosti	18
Indeksi prosječnih zarada bez poreza i doprinosa po sektorima djelatnosti	19
Prosječne zarade po opštinama	20
Prosječne zarade bez poreza i doprinosa po opštinama	21
CIJENE	
Indeksi cijena proizvođača industrijskih proizvoda.....	22
Indeksi cijena na malo.....	24
Indeksi cijena na malo po grupama proizvoda	25
Indeksi troškova života	26
ŠUMARSTVO	28
INDUSTRIJA	
Indeksi industrijske proizvodnje po sektorima	29
Indeksi industrijske proizvodnje po podsektorima	30
GRADEVINARSTVO	
Vrijednost izvršenih i ugovorenih radova, broj zaposlenih i izvršeni efektivni časovi	32
SPOLJNA TRGOVINA	
Izvoz i uvoz prema zemljama namjene – porijekla	33
Izvoz i uvoz robe	34
UNUTRAŠNJA TRGOVINA	
Promet u trgovini na malo.....	37
Prodaja i otkup proizvoda poljoprivrede, šumarstva i ribarstva.....	38
UGOSTITELJSTVO	
Promet u ugostiteljstvu.....	39
TURIZAM	
Dolasci i noćenja turista po zemljama i vrsti mjesta	40
Dolasci i noćenja gostiju po vrstama turističkih mjesta	41
Broj dolazaka i noćenja turista.....	41
SAOBRAĆAJ, SKLADIŠTENJE I VEZE	
Željeznički saobraćaj.....	42
Drumski saobraćaj.....	43
Vazdušni saobraćaj	44
Pomorski saobraćaj	45
PTT saobraćaj.....	45
MONETARNI AGREGATI I PLATNI BILANS	
46	
METODOLOŠKA OBJAŠNJENJA	
49	

CONTENTS

INTRODUCTION	3
CONTENTS	5
SUMMARY OF INDICES	
Quarterly indices	7
Monthly indices.....	8
POPULATION	
Natural population changes	10
Natural population changes by municipality	11
Migrations inside Montenegro by municipality	12
EMPLOYMENT AND WAGES	
Employees by activity sectors	13
Employees by municipality	14
Unemployed persons	45
Average wages by activity sectors	16
Average wages without taxes and contributions by activity sector	17
Indices of average wages by activity sector	18
Indices of average wages without taxes and contributions by activity sector	19
Average wages by municipality	20
Average wages without taxes and contributions by municipality	21
PRICES	
Producers price indices for industrial products	22
Retail prices index	24
Retail prices index by groups of products	25
Costs of living index	26
FORESTRY	28
INDUSTRY	
Indices of industrial production by sectors	29
Indices of industrial production by subsectors	30
CONSTRUCTION	
Value of finalized and ordered works, number of employees and finalized effective hours.....	32
EXTERNAL TRADE	
Exports and imports by countries of destination – origin	33
Exports and imports of goods	34
DOMESTIC TRADE	
Turnover in retail trade.....	37
Sale and buying out of products from agriculture, forestry and fishery	38
CATERING	
Turnover in catering	39
TOURISM	
Tourist arrivals and tourist overnight stays by country and type of resort	40
Tourist arrivals and tourist overnight stays by type of resort.....	41
Tourist arrivals and tourist overnight stays	41
TRANSPORT, STORAGE AND COMMUNICATIONS	
Railway transport	42
Road transport	43
Air transport	44
Marine transport.....	45
Postal, telegraph and telephone (PTT) communications	45
MONETARY AGGREGATES AND BALANCE OF PAYMENTS	46
METHODOLOGICAL EXPLANATION	49

OPŠTI PREGLED INDEKSA / SUMMARY OF INDICES

Kvartalni indeksi / Quarterly indices

	Kvartali / <i>Quarters</i> Ø 2007 = 100					
	<u>2007</u> <u>2006</u>	<u>I 2007</u> Ø 2007	<u>II 2007</u> Ø 2007	<u>III 2007</u> Ø 2007	<u>IV 2007</u> Ø 2007	
STANOVNIŠTVO ¹⁾						POPULATION ¹⁾
Živorodeni	103.5	79.7	99.7	115.7	104.8	Liveborn
Umrli	98.0	99.1	101.7	97.0	102.2	Deaths
Prirodni priraštaj	124.2	21.4	93.7	172.2	112.7	Natural increase
Zaključeni brakovi	123.1	73.5	88.6	110.0	127.9	Marriages
Razvedeni brakovi	97.9	77.4	99.1	131.3	92.2	Divorces
ZAPOSLENOST I ZARADE						EMPLOYMENT AND EARNINGS
Broj zaposlenih	103.7	97.3	100.0	101.6	101.1	Number of employees
Lica koja traže zaposlenje	79.6	113.4	103.0	91.7	91.9	Persons looking for employment
Nominalne zarade bez poreza i doprinosa	119.9	93.1	97.7	100	108.2	Nominal wages without taxes and contributions
Realne zarade bez poreza i doprinosa	115.1	95.5	99.6	99.4	104.2	Real wages without taxes and contributions
CIJENE						PRICES
Cijene proizvodind.proiz.	108.5	96.3	99.1	101.1	103.5	Produc. price ind. for ind. prod.
Ukupan indeks cijena na malo	104.2	97.2	98.5	100.9	103.4	Total retail price index
Poljoprivredni proizvodi	109.0	95.2	98.2	99.9	106.7	Agricultural products
Industrijski proizvodi	94.0	97.4	98.6	101.0	103.0	Industrial products
Troškovi života	104.2	97.5	98.1	100.6	103.8	
INDUSTRIJA						INDUSTRY
Indeksi fizičkog obima	100.1	96.4	92.7	95.3	115.6	Indices of physical scope
GRADEVINARSTVO						CONSTRUCTION
Vrijednost izvedenih građevinskih radova	96.8	63.9	96.2	118.3	121.6	Value of performed construction works
Izvršeni efektivni časovi na gradilištu	98.3	88.9	102.1	102.5	106.5	Performed effective hours at the construction site
SPOLJNA TRGOVINA						EXTERNAL TRADE
Izvoz	95.5	86.8	98.0	136.3	78.9	Export
Uvoz	143.9	70.1	97.4	133.9	98.6	Import
UNUTRAŠNJA TRGOVINA						DOMESTIC TRADE
Promet u trgovini na malo	140.8	65.4	96.1	122.3	116.2	Turnover in retail trade
UGOSTITELJSTVO	105.6	23.1	86.3	242.5	48.0	CATERING
TURIZAM						TOURISM
Posjete turista	119	18	74	284	23	Visits of tourists
Nocenja turista	123	11	61	314	14	Overnight stays of tourists
SAOBRAĆAJ, SKLADIŠTENJE I VEZE						TRANSPORT, STORAGE AND COMMUNICATIONS
Drumski-prevoz robe	126.3	91.9	94.8	107.8	105.5	Road - transport of goods
Prevoz putnika	123.1	85.6	98.8	125.1	90.5	Transport of passengers
Željeznički – prevoz robe	101.5	102.5	105.5	97.0	95.0	Railway - transport of goods
prevoz putnika	83.7	70.8	101.9	152.8	74.5	Transport of passengers
Vazdušni – prevoz robe	123.7	80.5	81.2	139.8	98.5	Air – transport of goods
Prevoz putnika	122.9	45.9	115.4	175.7	63.0	Transport of passengers
Pomorski– Prevoz robe – t milje	107.3	65.6	68.5	197.9	68.5	Marine- transport of goods – t miles

¹⁾ Prethodni podaci¹⁾ Preliminary data

OPŠTI PREGLED INDEKSA / SUMMARY OF INDICES

Mjesečni indeksi / Monthly indices

	2007 2006	I 2008 XII 2007	I 2008 I 2007	Ø 2007 = 100				
				I	II	III	IV	V
STANOVNIŠTVO ¹⁾								
Živorodeni	103.5	91.7	124.3	72.2	82.9	84.1	82.4	105.4
Umrli	98.0	95.5	105.5	86.4	105.2	105.7	101.8	105.5
Prirodni priraštaj	124.2	81.3	289.6	29.7	15.4	19.2	24.1	105.0
Zaključeni brakovi	123.1	34.7	62.0	83.1	69.8	67.6	99.4	87.0
Razvedeni brakovi	97.9	20.3	92.9	36.5	47.0	148.7	104.3	57.4
ZAPOSLENOST I ZARADE								
Broj zaposlenih	103.7	100.8	105.9	96.9	97.3	97.9	98.5	100.3
Lica koja traže zaposlenje	79.6	99.5	80.1	113.7	113.8	112.6	109.2	102.8
Nominalne zarade bez poreza i doprinosa	119.9	102.7	127.4	89.6	94.9	93.8	96.4	97.3
Realne zarade bez poreza i doprinosa	115.1	101.3	118.1	92.0	97.4	96.1	98.5	98.6
CIJENE								
Cijene proizvođača industrijskih proizv.	108.5	102.1	111.6	95.1	95.9	97.8	99.3	98.9
Ukupan indeks cijena na malo	104.2	101.4	108.3	97.0	97.1	97.4	98.2	98.6
Poljoprivredni proizvodi	109.0	102.6	115.5	94.8	95.3	95.5	97.2	100.9
Industrijski proizvodi	104.0	100.7	107.1	97.3	97.2	97.6	98.3	98.6
Troškovi života	104.2	101.4	107.9	97.4	97.4	97.6	97.9	98.6
ŠUMARSTVO	80.6	48.7	718.9	3.7	2.9	10.8	32.9	88.3
INDUSTRIJA								
Indeksi fizičkog obima	100.1	80.7	113.1	84.5	97.2	107.5	96.2	93.3
SPOLJNA TRGOVINA								
Izvoz	95.5	82.7	64.3	113.4	110.9	98.9
Uvoz	143.9	47.6	71.6	91.1	85.6	99.9
UNUTRAŠNJA TRGOVINA								
Promet robe na malo	140.8	62.0	135.3	57.7	60.3	78.1	89.8	95.0
Prodaja i otkup proizvoda poljoprivrede, šumarstva i ribarstva	107.1	40.4	49.6	98.5	47.4	60.4	60.4	62.8
UGOSTITELJSTVO								
Promet u ugostiteljstvu	105.6	65.8	123.6	22.4	22.2	24.6	44.7	101.8
TURIZAM								
Posjete turista	119	112	116	18	17	20	37	69
Noćenja turista	123	165	131	12	10	11	24	49
SAOBRAĆAJ, SKLADIŠT. I VEZE								
Drumski – prevoz robe	126.3	158.5	158.5	83.1	91.1	101.4	96.7	96.7
Prevoz putnika	123.1	84.9	84.9	89.4	79.6	87.7	92.6	96.7
Željeznički – prevoz robe	101.5	71.9	72.3	101.6	91.7	114.3	113.4	95.6
Prevoz putnika	83.7	107.7	87.5	87.2	59.7	65.7	84.8	78.8
Vazdušni - prevoz putnika	122.9	200.8	121.1	45.6	40.7	51.3	76.6	94.5
Pomorski- prevoz robe – t milje	107.3	100	115.0	58.8	70.5	67.6	52.9	70.5

¹⁾ Prethodni podaci

OPŠTI PREGLED INDEKSA/ SUMMARY OF INDICES

Mjesečni indeksi / Monthly indices

Ø 2007 = 100							2008	
VI	VII	VIII	IX	X	XI	XII	I	
111.4	108.6	135.5	103.0	114.0	102.6	98.0	89.8	POPULATION ¹⁾
97.9	99.9	101.8	89.2	111.6	99.7	95.4	91.1	Liveborn
152.0	134.7	237.3	144.6	121.1	111.2	105.7	85.9	Deaths
79.4	98.5	107.0	124.4	113.2	121.9	148.7	51.5	Natural increase
135.7	120.0	127.8	146.1	73.0	36.5	167.0	33.9	Marriages
								Divorces
								EMPLOYMENT AND EARNINGS
101.1	102.3	101.3	101.1	100.7	100.9	101.8	102.6	Number of employees
97.1	93.6	90.9	90.6	91.8	92.4	91.5	91.0	Persons looking for employment
								Nominal wages without taxes and contributions
99.1	97.9	100	102.1	105.0	108.3	111.2	114.2	Real wages without taxes and contributions
101.2	98.3	99.9	99.9	101.9	104.1	106.6	107.9	
								PRICES
99.2	101.3	100.9	101.2	103.7	102.7	104.0	106.2	Produc. price ind. for ind. prod.
98.7	100.3	100.3	102.1	102.7	103.7	103.9	105.4	Total retail price index
96.5	95.1	99.6	104.9	105.0	105.0	110.0	112.8	Agricultural products
99.0	101.0	100.8	101.3	102.1	103.3	103.5	104.2	Industrial products
97.9	99.6	100.1	102.2	103.0	104.0	104.3	105.8	Costs of living
145.3	170.7	239.4	190.3	184.5	76.6	54.6	26.6	FORESTRY
								INDUSTRY
88.7	88.6	99.2	98.0	116.7	111.7	118.4	95.6	Indices of physical scope
								EXTERNAL TRADE
84.0	213.0	98.6	97.3	105.6	63.7	67.5	...	Export
106.8	188.9	111.4	101.3	123.6	82.9	89.3	...	Import
								INTERNAL TRADE
103.5	127.4	129.7	109.6	116.8	105.7	126.4	78.1	Turnover of retail trade goods
97.8	186.1	165.4	98.3	106.2	95.8	120.9	48.9	Sales and buy out of products in agriculture, forestry and fishing
112.2	219.6	295.2	212.6	64.1	37.1	42.2	27.7	CATERING
								Turnover in catering
								TOURISM
116	339	373	141	35	16	19	21	Visits of tourists
110	352	444	145	23	9	10	16	Overnight stays of tourists
								TRANSPORT, STORAGE AND COMMUNIC.
91.1	104.6	105.5	113.4	101.5	107.8	107.1	130.6	Road - transport of goods
107.2	130.8	138.9	105.6	90.2	91.1	90.2	76.1	Transport of passengers
107.5	106.5	96.6	87.8	94.7	89.7	100.6	73.7	Railway - transport of goods
142.1	142.1	163.6	152.7	76.4	65.7	81.2	76.3	Transport of passengers
175.2	165.4	205.3	156.4	74.1	54.6	60.3	55.2	Air - transport of passengers
82.3	305.8	170.5	117.6	76.4	70.5	58.8	67.6	Marine- transport of goods - t miles

¹⁾ Preliminary data

PRIRODNO KRETANJE STANOVNIŠTVA
NATURAL POPULATION CHANGES

Crna Gora / Montenegro

	Živorodeni <i>Live births</i>			Umrli <i>Deaths</i>			Vitalni indeks <i>Vital index</i>	Prirodni priraštaj <i>Natural increase</i>	Brakovi / <i>Marriages</i>	
	<i>ukupno</i> <i>Total</i>	<i>muško</i> <i>Male</i>	<i>žensko</i> <i>Female</i>	<i>ukupno</i> <i>Total</i>	<i>muško</i> <i>Male</i>	<i>žensko</i> <i>Female</i>			sklopljeni <i>New marriages</i>	razvedeni <i>Divorces</i>
2003	8344	4349	3995	5704	2895	2809	1.46	2640	4050	494
2004	7849	4030	3819	5707	3011	2696	1.38	2142	3440	505
2005	7352	3883	3469	5839	3082	2757	1.26	1513	3291	499
2006	7531	3969	3562	5968	3092	2876	1.26	1563	3462	470
2007 ¹⁾	7791	4116	3675	5849	2994	2855	1.33	1942	4262	460
<u>I 2008</u>	124	122	126	105	116	95	-	290	62	93
I 2007										
<u>I 2008</u>	90	88	92	91	99	83	-	86	52	34
Ø 2007										
2007 ¹⁾										
I	469	246	223	421	213	208	1.11	48	295	14
II	538	268	270	513	249	264	1.05	25	248	18
III	546	275	271	515	277	238	1.06	31	240	57
IV	535	289	246	496	252	244	1.08	39	353	40
V	684	341	343	514	269	245	1.33	170	309	22
VI	723	400	323	477	248	229	1.52	246	282	52
VII	705	379	326	487	232	255	1.45	218	350	46
VIII	880	469	411	496	254	242	1.77	384	380	49
IX	669	364	305	435	222	213	1.54	234	442	56
X	740	397	343	544	297	247	1.36	196	402	28
XI	666	368	298	486	262	224	1.37	180	433	14
XII	636	320	316	465	219	246	1.37	171	528	64
2008 ¹⁾										
I	583	301	282	444	247	197	1.31	139	183	13

¹⁾ Prethodni podaci¹⁾ Preliminary data

PRIRODNO KRETANJE STANOVNIŠTVA PO OPŠTINAMA
NATURAL POPULATION CHANGES BY MUNICIPALITY
I – 2008. god.¹⁾ / January 2008

	Živorodeni / Live births			Umrli / Deaths			Vitalni indeks <i>Vital index</i>	Prirodni priraštaj <i>Natural increase</i>	Brakovi / Marriages	
	ukupno <i>Total</i>	muški <i>Male</i>	ženski <i>Female</i>	ukupno <i>Total</i>	muški <i>Male</i>	ženski <i>Female</i>			sklopljeni <i>New marriages</i>	razvedeni <i>Divorces</i>
CRNA GORA MONTENEGRO	583	301	282	444	247	197	1.31	139	183	13
ANDRIJEVICA	3	-	3	4	3	1	0.75	-1	-	-
BAR	36	17	19	26	16	10	1.38	10	18	-
BERANE	25	14	11	18	14	4	1.39	7	7	-
BIJELO POLJE	55	27	28	45	23	22	1.22	10	15	-
BUDVA	9	5	4	5	1	4	1.80	4	3	-
DANILOVGRAD	9	5	4	11	9	2	0.82	-2	4	2
ŽABLJAK	2	1	1		-	-	-	2	1	-
KOLAŠIN	7	3	4	18	10	8	0.39	-11	3	-
KOTOR	17	11	6	21	9	12	0.81	-4	3	-
MOJKOVAC	9	4	5	6	3	3	1.50	3	4	-
NIKŠIĆ	58	32	26	57	34	23	1.02	1	38	2
PLAV	12	7	5	8	4	4	1.50	4	4	-
PLUŽINE	3	-	3	4	1	3	0.75	-1	1	-
PLJEVLJA	28	13	15	28	18	10	1.00	0	6	1
PODGORICA	231	114	117	121	60	61	1.91	110	42	-
ROŽAJE	16	12	4	10	8	2	1.60	6	14	5
TIVAT	11	7	4	10	4	6	1.10	1	2	-
ULCINJ	17	8	9	11	10	1	1.55	6	9	-
HERCEG NOVI	30	18	12	14	7	7	2.14	16	5	3
CETINJE	4	2	2	23	11	12	0.17	-19	4	-
ŠAVNIK	1	1	0	4	2	2	0.25	-3	-	-

¹⁾ Prethodni podaci¹⁾ Preliminary data

KRETANJE STANOVNIŠTVA UNUTAR CRNE GORE PO OPŠTINAMA
MIGRATIONS INSIDE MONTENEGRO BY MUNICIPALITY

januar 2008. godine ¹⁾ / January 2008

OPŠTINE / MUNICIPALITIES	DOSELJENI / MOVED IN	ODSELJENI / MOVED OUT OF	SALDO / BALLANCE
UKUPNO / TOTAL	166	166	0
ANDRIJEVICA	-	-	-
BAR	26	11	15
BERANE	5	13	-8
BIJELO POLJE	9	24	-15
BUDVA	5	5	0
DANILOVGRAD	11	7	4
ŽABLJAK	2	9	-7
KOLAŠIN	1	3	-2
KOTOR	5	5	0
MOJKOVAC	1	6	-5
NIKŠIĆ	5	16	-11
PLAV	1	3	-2
PLUŽINE	2	1	1
PLJEVLJA	1	18	-17
PODGORICA	65	22	43
ROŽAJE	2	7	-5
TIVAT	6	3	3
ULCINJ	6	4	2
HERCEG NOVI	11	5	6
CETINJE	1	2	-1
ŠAVNIK	1	2	-1

¹⁾ Prethodni podaci

¹⁾ Preliminary data

ZAPOSLENI PO SEKTORIMA DJELATNOSTI
EMPLOYEES BY ACTIVITY SECTORS

	Ukupno <i>Total</i>	PO SEKTORIMA / <i>BY ACTIVITY SECTORS</i>						
		poljoprivreda šumarstvo i vodoprivreda <i>Agriculture, forestry and water supply</i>	ribarstvo <i>Fishing</i>	vadenje ruda i kamena <i>Mining and quarrying</i>	prerađivačka industrija <i>Manufacturing</i>	proizvodnja elekt. energije <i>Electricity supply</i>	građevinarstvo <i>Construction</i>	trgovina na veliko i malo, opravka <i>Wholesale and retail trade, repair</i>
Ø 2005	144340	2786	98	4079	25971	5496	7563	23789
Ø 2006	150800	2607	115	4159	26065	5627	6853	29602
Ø 2007	156408	2586	112	3753	25697	5594	6647	30750
I 2008/I 2007	105.9	101.3	116.5	96.3	96.0	108.3	140.5	103.0
2007								
I	151535	2555	109	3837	25851	5411	5498	30065
II	152114	2565	109	3839	25855	5434	5677	30314
III	153140	2609	109	3785	25980	5440	5857	30530
IV	154074	2609	109	3785	26071	5446	6019	30657
V	156817	2589	109	3767	26185	5470	6478	31228
VI	158190	2594	109	3762	25983	5479	6713	31570
VII	160045	2599	109	3761	26093	5482	6976	31801
VIII	158392	2620	117	3725	25764	5788	7037	30439
IX	158164	2620	117	3719	25778	5794	7140	30554
X	157458	2619	117	3686	25748	5780	7236	30356
XI	157739	2526	117	3686	24446	5787	7472	30731
XII	159223	2527	117	3686	24608	5819	7662	30750
2008								
I	160450	2587	127	3696	24811	5859	7724	30974

/nastavak/

/ continued /

	PO SEKTORIMA / <i>BY ACTIVITY SECTORS</i>							
	hoteli i restorani <i>Hotels and restaurants</i>	saobraćaj, skladištenje i veze <i>Transport, storage and communi- cations</i>	finansijsko posredovnje <i>Financial activities</i>	aktivnosti u vezi s nekretninama <i>Real estate activities, renting</i>	državna uprava i obav. socijalno osiguranje <i>Public administration and social insurance</i>	obrazovanje <i>Education</i>	zdravstveno i socijalno osiguranje <i>Health and social work</i>	ostale komunalne, društ. i lične usluge <i>Other community, social & pers. service activities</i>
Ø 2005	11110	13745	3014	5067	9524	12974	11200	7924
Ø 2006	10928	12133	3114	5905	10345	12846	12012	8489
Ø 2007	11307	11358	3143	5354	17575	12687	12004	7841
I 2008/I 2007	132.0	108.5	112.9	104.5	106.2	101.9	101.7	104.9
2007								
I	9439	10993	3022	5209	17328	12602	11957	7659
II	9505	11021	3029	5217	17313	12627	11960	7652
III	9888	11122	3043	5224	17326	12637	11931	7659
IV	10291	11196	3050	5236	17341	12653	11931	7680
V	11344	11316	3068	5354	17398	12696	11966	7849
VI	11944	11492	3108	5406	17443	12663	12001	7923
VII	12923	11603	3124	5462	17465	12666	12007	7974
VIII	12369	11575	3200	5449	17637	12676	12033	7963
IX	12065	11443	3203	5437	17607	12710	12043	7934
X	11721	11314	3197	5437	17612	12698	12026	7911
XI	11959	11514	3306	5376	18074	12771	12070	7904
XII	12237	11708	3365	5436	18359	12840	12125	7984
2008								
I	12455	11925	3413	5441	18403	12845	12156	8034

ZAPOSLENI PO OPŠTINAMA / EMPLOYEES BY MUNICIPALITY

	Opštine / Municipalities										
	Andrijevica	Bar	Berane	Bijelo Polje	Budva	Danilovgrad	Žabljak	Kolašin	Kotor	Mojkovac	Nikšić
Ø 2005	672	10507	5101	7219	7912	2484	701	1345	5232	1325	17766
Ø 2006	540	11105	5218	7316	9308	2541	805	1410	5547	1495	17616
Ø 2007	528	11125	5803	8060	8323	2496	937	1591	5983	1503	17481
I 2008/I 2007	102.7	107.3	103.6	106.0	107.4	119.6	102.7	99.6	106.6	104.6	104.4
2007											
I	521	10674	5689	7739	7519	2324	911	1619	5762	1467	17093
II	520	10734	5711	7848	7446	2308	911	1564	5738	1487	17176
III	519	10816	5695	7898	7834	2311	893	1564	5778	1482	17323
IV	523	10859	5711	7922	8178	2322	904	1567	5836	1493	17321
V	525	11175	5711	8051	8727	2325	942	1574	6028	1496	17416
VI	521	11367	5840	8134	8914	2453	962	1614	6127	1504	17458
VII	518	11622	5863	8174	9340	2585	967	1615	6252	1511	17641
VIII	530	11415	5860	8137	9007	2611	957	1614	6072	1484	17622
IX	541	11117	5963	8278	8534	2634	949	1579	6085	1514	17852
X	538	11180	5856	8071	8171	2646	937	1587	6003	1520	17579
XI	541	11209	5922	8248	8108	2652	928	1591	6074	1536	17561
XII	541	11336	5818	8218	8096	2775	977	1603	6038	1544	17730
2008											
I	535	11451	5896	8206	8072	2779	936	1613	6144	1535	17851

/nastavak/

/ continued /

Nastavak /	Opštine / Municipalities									
	Plav	Plužine	Pljevlja	Podgorica	Rožaje	Tivat	Ulcinj	Herceg Novi	Cetinje	Šavnik
Ø 2005	1515	995	7457	49943	3259	2904	3785	9678	4260	280
Ø 2006	1470	913	7233	53103	3292	2940	3994	10130	4545	279
Ø 2007	1425	952	7100	56118	3148	3632	3873	11149	4890	291
I 2008/I 2007	100.7	98.4	98.2	108.5	91.9	97.7	105.4	105.7	106.1	96.2
2007										
I	1424	964	7329	54220	3147	3639	3768	10663	4771	292
II	1420	943	7212	54722	3167	3658	3719	10705	4842	283
III	1427	948	7115	54933	3191	3697	3746	10824	4858	288
IV	1424	945	7143	55064	3206	3805	3768	10933	4854	296
V	1427	957	7165	55856	3172	3938	3817	11336	4879	300
VI	1427	961	7155	56065	3212	3768	3917	11556	4922	313
VII	1428	967	7109	56360	3219	3663	4106	11899	4897	309
VIII	1427	949	7049	56417	3229	3572	3865	11381	4902	292
IX	1446	945	6976	56729	3247	3484	3925	11163	4915	288
X	1415	948	6827	57185	3250	3435	3935	11180	4913	282
XI	1418	945	7016	57430	2866	3391	3972	11098	4965	278
XII	1416	949	7105	58431	2876	3536	3941	11055	4962	276
2008										
I	1434	949	7199	58816	2893	3555	3971	11271	5063	281

NEZAPOSLENA LICA¹⁾ / UNEMPLOYED PERSONS

	Stanje krajem perioda / Situation at the end of the period						U toku perioda / In the middle of the period		
	lica koja traže zaposlenje ²⁾ ukupno <i>Persons looking for job Total</i>	nezaposlena lica koja prvi put traže zaposlenje <i>Unemployed persons first time looking for job</i>	nezaposlena lica bez kvalifikacija <i>Unqualified unemployed persons</i>	lica koja primaju novčanu naknadu ³⁾ <i>Persons receiving unemployment benefits</i>	nezaposlene žene <i>unemployed women</i>		prijavilo se za zapošljavanje ⁴⁾ <i>Reported for employment</i>	zaposleni prema evidenciji Zavoda za zapošljavanje Crne Gore <i>Employees according to the records of Employment Agency of Montenegro</i>	prestanak vođenja evidencije ⁵⁾ <i>Records stopped to be kept</i>
					Svega <i>Total</i>	bez kvalifikacija <i>Unqualified</i>			
Ø 2004	65064	33387	22188	4432	35287	11830	35967	15222	37592
Ø 2005	54459	23010	16067	6137	27152	7368	30035	21077	42809
Ø 2006	43190	14855	11550	7833	19949	4720	31561	23463	42969
Ø 2007	34396	10069	8838	8654	15513	3414	26263	31897	34933
2006									
I	48639	17699	13260	7098	23191	5712	2472	1533	2910
II	48656	17295	13141	6142	22829	5534	3307	1765	3465
III	49388	17549	13235	7655	22854	5458	3585	2048	3184
IV	48651	17253	13057	7842	22512	5380	2563	2215	3450
V	45640	16016	12337	8002	21010	5015	2479	2626	5614
VI	42560	14938	11513	7778	19428	4609	2370	3131	5429
VII	40220	14030	10800	8123	18349	4292	1877	3131	4182
VIII	39093	13503	10410	7944	17899	4119	2023	1483	3188
IX	38919	13153	10247	8211	17881	4113	2838	1490	3143
X	38747	12538	10236	8432	17875	4187	2985	2716	3213
XI	38892	12224	10213	8274	17839	4153	2663	1995	2649
XII	38876	12067	10148	8498	17719	4097	2399	1815	2542
2007									
I	39104	12030	10154	8220	17815	4104	2590	1618	2398
II	39155	12131	10236	8398	17757	4090	2591	2229	2645
III	38714	11943	10088	8420	17575	4027	2304	2445	2836
IV	37571	11521	9800	8352	17003	3828	1942	2319	3139
V	35356	10651	9198	8313	15920	3558	1744	3049	4057
VI	33393	9885	8636	8260	14912	3279	1687	4434	3841
VII	32205	9350	8196	8530	14426	3117	2114	3698	3529
VIII	31271	8931	7897	9433	14124	2990	1644	2063	2629
IX	31156	8737	7840	8592	14080	2961	2328	2289	2568
X	31569	8673	7994	8917	14253	3020	2961	2679	2591
XI	31787	8579	8021	9203	14279	3022	2616	2808	2465
XII	31469	8388	7994	9206	14017	2966	1722	2266	2235
I 2008/I 2007	80,0	67,6	79,3	112,2	77,8	71,6	75,1	114,5	89,2
2008									
I	31323	8137	8056	9222	13864	2938	1947	1853	2139

¹⁾ IZVOR: Zavod za zapošljavanje Crne Gore²⁾ Shodno članu 4 Zakona o zapošljavanju („Sl.list RCG”, br. 5/02)³⁾ Shodno članu 48 Zakona o zapošljavanju⁴⁾ Nezaposlene osobe koje su se tokom izvještajnog mjeseca prijavile na evidenciju Zavoda za zapošljavanje⁵⁾ Shodno članu 86 Zakona o zapošljavanju¹⁾ SOURCE: Employment Agency of Montenegro²⁾ According to the article 4 of the Law on Employment („Official Gazette of RoM”, No. 5/02 and 79/04)³⁾ According to the Article 48 of the Law on Employment⁴⁾ Unemployed persons who in the reference month reported to the records of the Employment Agency of Montenegro⁵⁾ According to the Article 86 of the Law on Employment

PROSJEČNE ZARADE PO SEKTORIMA DJELATNOSTI
AVERAGE WAGES BY ACTIVITY SECTORS

u EUR		PO SEKTORIMA / BY ACTIVITY SECTORS							in EUR
	Ukupno Total	poljop. šumar. i vodoprivreda Agriculture, forestry and water supply	ribarstvo Fishing	vađenje ruda i kamena Mining and quarrying	prerađivačka industrija Manufacturing	proizvodnja elekt. energije Electricity supply	građevinarstvo Construction	trgovina na veliko i malo, opravka Wholesale and retail trade, repair	
Ø 2007	497	446	196	725	530	701	430	301	
I 2008/I 2007	126.2	96.2	117.6	135.1	119.3	263.8	180.7	107.4	
2007									
I	447	610	205	613	477	268	259	299	
II	473	363	175	725	507	943	450	290	
III	467	408	176	662	528	604	366	272	
IV	479	391	158	708	500	681	404	293	
V	484	395	211	756	534	685	391	285	
VI	493	387	179	783	527	724	439	285	
VII	487	436	201	684	536	666	421	302	
VIII	497	447	173	748	543	705	452	304	
IX	508	444	226	778	573	713	452	292	
X	522	458	310	732	566	650	456	303	
XI	539	477	165	748	546	701	446	299	
XII	554	547	184	771	527	729	547	367	
2008									
I	564	587	241	828	569	707	468	321	

/nastavak/

/ continued /

		PO SEKTORIMA / BY ACTIVITY SECTORS						
	hoteli i restorani <i>Hotels and restaurants</i>	saobraćaj, skladišt. i veze <i>Transport, storage and communications</i>	financijsko posredovanje <i>Financial activities</i>	aktivnosti u vezi s nekretnostima <i>Real estate activities, renting</i>	državna uprava i obav. socijalno osiguranje <i>Public administration and social insurance</i>	obrazovanje <i>Education</i>	zdravstveno i socijalno osiguranje <i>Health and social work</i>	ostale komun., društ. i lične usl. <i>Other community, social & pers. service activities</i>
Ø 2007	388	659	1156	438	506	433	427	431
I 2008/I 2007	103.4	116.0	120.4	115.7	128.5	137.8	131.5	123.1
2007								
I	357	586	979	421	463	394	397	398
II	395	587	878	441	477	397	393	389
III	384	592	1141	402	481	406	382	433
IV	354	683	1079	426	488	407	387	412
V	396	607	1221	389	490	411	400	424
VI	368	657	1185	415	508	414	411	432
VII	357	637	1085	433	511	411	405	441
VIII	381	648	1173	445	514	420	417	424
IX	394	676	1138	436	532	426	416	433
X	402	689	1238	447	538	462	500	434
XI	416	795	1318	453	534	518	501	463
XII	432	728	1318	530	540	529	511	477
2008								
I	369	680	1179	487	595	543	522	490

PROSJEČNE ZARADE BEZ POREZA I DOPRINOSA PO SEKTORIMA DJELATNOSTI
AVERAGE WAGES WITHOUT TAXES AND CONTRIBUTIONS BY ACTIVITY SECTOR

u EUR		in EUR						
	Ukupno <i>Total</i>	PO SEKTORIMA / BY ACTIVITY SECTORS						
		poljop., šumar. i vodoprivreda <i>Agriculture, forestry and water supply</i>	ribarstvo <i>Fishing</i>	vađenje ruda i kamena <i>Mining and quarrying</i>	prerađivačka industrija <i>Manufacturing</i>	proizvodnja elekt. energije <i>Electricity supply</i>	građevni- narstvo <i>Construction</i>	trgovina na veliko i malo, opravka <i>Wholesale and retail trade, repair</i>
Ø 2007	338	305	140	493	358	469	295	208
I 2008/I 2007	127.4	96.8	117.5	135.4	120.2	266.1	179.8	108.7
2007								
I	303	412	143	421	322	180	178	207
II	321	245	126	498	343	630	312	202
III	317	278	125	452	356	405	249	189
IV	326	267	113	483	339	458	278	204
V	329	270	151	513	360	458	267	197
VI	335	265	128	532	356	484	300	197
VII	331	299	144	464	362	445	288	209
VIII	338	307	124	508	367	472	310	210
IX	345	305	162	528	387	478	310	202
X	355	315	222	497	382	436	313	210
XI	366	328	118	507	369	470	306	207
XII	376	376	132	522	356	488	375	254
2008								
I	386	399	168	570	387	479	320	225

/nastavak/

/ continued /

	PO SEKTORIMA / BY ACTIVITY SECTORS							
	hoteli i restorani <i>Hotels and restaurants</i>	saobraćaj, skladišt. i veze <i>Transport, storage and communications</i>	financijsko posredovanje <i>Financial activities</i>	aktivnosti u vezi s nekretninama <i>Real estate activities, renting</i>	državna uprava i obav. socijalno osiguranje <i>Public administration and social insurance</i>	obrazovanje <i>Education</i>	zdravstveno i socijalno osiguranje <i>Health and social work</i>	ostale komu- nalne, društ. i lične usl. <i>Other community, social & pers. service activities</i>
Ø 2007	264	439	770	299	344	295	296	296
I 2008/I 2007	103.4	116.0	120.4	115.7	128.5	137.8	131.5	123.1
2007								
I	236	393	650	286	313	267	274	271
II	270	395	611	301	323	269	272	267
III	260	398	756	273	325	277	265	296
IV	243	458	718	291	332	278	269	283
V	270	404	812	266	333	281	278	291
VI	251	437	790	284	346	283	286	297
VII	244	424	724	296	348	281	282	303
VIII	260	431	783	304	350	287	290	291
IX	269	449	758	298	362	291	289	297
X	275	457	825	305	366	316	347	298
XI	284	527	878	308	363	354	348	318
XII	295	483	880	360	367	361	355	328
2008								
I	254	461	792	334	406	370	357	341

INDEKSI PROSJEČNIH ZARADA PO SEKTORIMA DJELATNOSTI
INDICES OF AVERAGE WAGES BY ACTIVITY SECTOR

Ø 2007=100

	Ukupno <i>Total</i>	PO SEKTORIMA / BY ACTIVITY SECTORS						
		poljop. šumar. i vodoprivreda <i>Agriculture, forestry and water supply</i>	ribarstvo <i>Fishing</i>	vađenje ruda i kamenarstvo <i>Mining and quarrying</i>	prerađivačka industrija <i>Manufacturing</i>	proizvodnja elekt. energije <i>Electricity supply</i>	građevinarstvo <i>Construction</i>	trgovina na veliko i malo, opravka <i>Wholesale and retail trade, repair</i>
Ø 2007	100.0	100.0	100.0	100.0	100.0	100.0	100.0	100.0
I 2008/I 2007	126.2	96.2	117.6	135.1	119.3	263.8	180.7	107.4
2007								
I	89.9	136.8	104.6	84.6	90.0	38.2	60.2	99.3
II	95.2	81.4	89.3	100.0	95.7	134.5	104.7	96.3
III	94.0	91.5	89.8	91.3	99.6	86.2	95.1	90.6
IV	96.4	87.7	80.6	97.7	94.3	97.1	94.0	97.3
V	97.4	88.6	107.7	104.3	100.8	97.7	90.9	94.7
VI	99.2	86.8	91.3	108.0	99.4	103.3	102.1	94.7
VII	98.0	97.8	102.6	94.3	101.1	95.0	97.9	100.3
VIII	100.0	100.2	88.3	103.2	102.5	100.6	105.1	101.0
IX	102.2	99.6	115.3	107.3	108.1	101.7	105.1	97.0
X	105.0	102.7	158.2	101.0	106.8	92.7	106.0	100.7
XI	108.5	107.0	84.2	103.2	103.0	100.0	103.7	99.3
XII	111.5	122.6	93.9	106.3	99.4	104.0	127.2	121.9
2008								
I	113.5	131.6	123.0	114.2	107.4	100.9	108.8	106.6

/nastavak/

/ continued /

	PO SEKTORIMA / BY ACTIVITY SECTORS							
	hoteli i restorani <i>Hotels and restaurant s</i>	saobraćaj, skladišt. i veze <i>Transport, storage and communications</i>	financijsko posredovanje <i>Financial activities</i>	aktivn. u vezi s nekretnostima <i>Real estate activities, renting</i>	državna uprava i obav. socijalno osiguranje <i>Public administration and social insurance</i>	obrazovanje <i>Education</i>	zdravst. i socijalno osiguranje <i>Health and social work</i>	ostale komunalne, društ. i lične usl. <i>Other community, social & personal service activities</i>
Ø 2007	100.0	100.0	100.0	100.0	100.0	100.0	100.0	100.0
I 2008/I 2007	103.4	116.0	120.4	115.7	128.5	137.8	131.5	123.1
2007								
I	92.0	88.9	84.7	96.1	91.5	91.0	93.0	92.3
II	101.8	89.1	76.0	100.7	94.3	91.7	92.0	90.3
III	99.0	89.8	98.7	91.8	95.1	93.8	89.5	100.5
IV	91.2	103.6	93.3	97.3	96.4	94.0	90.6	95.6
V	102.1	92.1	105.6	88.8	96.8	94.9	93.7	98.4
VI	94.8	99.7	102.5	94.7	100.4	95.6	96.3	100.2
VII	92.0	96.7	93.9	98.9	101.0	94.9	94.8	102.3
VIII	98.2	98.3	101.5	101.6	101.6	97.0	97.7	98.4
IX	101.5	102.6	98.4	99.5	105.1	98.4	97.4	100.5
X	103.6	104.6	107.1	102.1	106.3	106.7	117.1	100.7
XI	107.2	120.6	114.0	103.4	105.5	119.6	117.3	107.4
XII	111.3	110.5	114.0	121.0	106.7	122.2	119.7	110.7
2008								
I	95.1	103.2	102.0	111.2	117.6	125.4	122.2	113.7

INDEKSI PROSJEČNIH ZARADA BEZ POREZA I DOPRINOSA PO SEKTORIMA DJELATNOSTI
INDICES OF AVERAGE WAGES WITHOUT TAXES AND CONTRIBUTIONS BY ACTIVITY SECTOR

Ø 2007=100

	Ukupno <i>Total</i>	PO SEKTORIMA / BY ACTIVITY SECTORS						
		poljop. šumar. i vodoprivreda <i>Agriculture, forestry and water supply</i>	ribarstvo <i>Fishing</i>	vađenje ruda i kamena <i>Mining and quarrying</i>	prerađivačka industrija <i>Manufacturing</i>	proizvodnja elekt. energije <i>Electricity supply</i>	građevinarstvo <i>Construction</i>	trgovina na veliko i malo opravka <i>Wholesale and retail trade, repair</i>
Ø 2007	100.0	100.0	100.0	100.0	100.0	100.0	100.0	100.0
I 2008 I 2007	127.4	96.8	117.5	135.4	120.2	266.1	179.8	108.7
2007								
I	89.6	135.1	102.1	85.4	89.9	38.4	60.3	99.5
II	95.0	80.3	90.0	101.0	95.8	134.3	105.8	97.1
III	93.8	91.1	89.3	91.7	99.4	86.4	84.4	90.9
IV	96.5	87.5	80.7	98.0	94.7	97.7	94.2	98.1
V	97.3	88.5	107.9	104.1	100.6	97.7	90.5	94.7
VI	99.1	86.9	91.4	107.9	99.4	103.2	101.7	94.7
VII	97.9	98.0	102.9	94.1	101.1	94.9	97.6	100.5
VIII	100.0	100.7	88.6	103.0	102.5	100.6	105.1	101.0
IX	102.1	100.0	115.7	107.1	108.1	101.9	105.1	97.1
X	105.0	103.3	158.6	100.8	106.7	93.0	106.1	101.0
XI	108.3	107.5	84.3	102.8	103.1	100.2	103.7	99.5
XII	111.2	123.3	94.3	105.9	99.4	104.1	127.1	122.1
2008								
I	114.2	130.8	120.0	115.6	108.1	102.1	108.5	108.2

/nastavak/

/ continued /

	PO SEKTORIMA / BY ACTIVITY SECTORS							
	hoteli i restorani <i>Hotels and restaurants</i>	saobraćaj, skladišt. i veze <i>Transport, storage and communications</i>	finansijsko posred. <i>Financial activities</i>	aktivn. u vezi s nekretninama <i>Real estate activities, renting</i>	državna uprava i obav. socijalno osiguranje <i>Public administration and social insurance</i>	obrazovanje <i>Education</i>	zdravstveno i socijalno osiguranje <i>Health and social work</i>	ostale komunalne, društ. i lične usl. <i>Other community, social & personal service activities</i>
Ø 2007	100.0	100.0	100.0	100.0	100.0	100.0	100.0	100.0
I 2008 I 2007	107.6	117.3	121.8	116.8	129.7	138.6	130.3	125.8
2007								
I	89.4	89.5	84.4	95.7	91.0	90.5	92.6	91.6
II	102.3	90.0	79.4	100.7	93.9	91.2	91.9	90.2
III	98.5	90.7	98.2	91.3	94.5	93.9	89.5	100.0
IV	92.0	104.3	93.2	97.3	96.5	94.2	90.9	95.6
V	102.3	92.0	105.5	89.0	96.8	95.3	93.9	98.3
VI	95.1	99.5	102.6	95.0	100.6	95.9	96.6	100.3
VII	92.4	96.6	94.0	99.0	101.2	95.3	95.3	102.4
VIII	98.5	98.2	101.7	101.7	101.7	97.3	98.0	98.3
IX	101.9	102.3	98.4	99.7	105.2	98.6	97.6	100.3
X	104.2	104.1	107.1	102.0	106.4	107.1	117.2	100.7
XI	107.6	120.0	114.0	103.0	105.5	120.0	117.6	107.4
XII	111.7	110.0	114.3	120.4	106.7	122.4	119.9	110.8
2008								
I	96.2	105.0	102.9	111.7	118.0	125.4	120.6	115.2

PROSJEČNE ZARADE PO OPŠTINAMA / AVERAGE WAGES BY MUNICIPALITY

u EUR	Opštine / Municipalities											in EUR
	Andrijevica	Bar	Berane	Bijelo Polje	Budva	Danilovgrad	Žabljak	Kolašin	Kotor	Mojkovac	Nikšić	
Ø 2007	398	445	407	406	536	419	398	437	498	422	555	
I 2008 I 2007	141.4	123.5	123.4	136.6	127.4	132.6	158.4	127.6	121.2	147.4	124.0	
2007												
I	362	408	394	369	470	356	353	373	467	359	499	
II	355	402	388	383	549	394	424	425	460	403	561	
III	367	435	382	387	512	397	380	439	465	433	494	
IV	393	432	391	391	537	399	356	420	473	417	542	
V	395	440	392	387	516	488	400	454	480	409	573	
VI	393	464	400	396	504	402	327	428	483	413	556	
VII	381	460	398	390	506	431	403	417	501	408	512	
VIII	410	439	415	398	538	405	432	441	483	447	551	
IX	391	448	408	433	522	423	405	416	520	410	565	
X	423	462	431	434	544	420	427	437	536	425	571	
XI	428	461	432	428	583	432	437	488	557	468	594	
XII	474	468	448	466	635	460	464	488	547	451	626	
2008 I	512	504	486	504	599	472	559	476	566	529	619	

/nastavak/

/continued/

	Opštine / Municipalities									
	Plav	Plužine	Pljevlja	Podgorica	Rožaje	Tivat	Ulcinj	Herceg Novi	Cetinje	Šavnik
Ø 2007	376	444	492	548	456	486	354	408	366	420
I 2008 I 2007	128.4	187.7	129.6	124.4	140.7	145.3	140.0	118.3	135.2	147.0
2007										
I	335	284	432	500	383	415	290	371	290	353
II	366	445	436	521	498	464	317	371	307	462
III	384	447	468	510	421	448	343	386	390	390
IV	362	417	481	520	431	491	342	429	336	393
V	359	440	479	522	425	469	349	397	342	413
VI	359	440	498	550	431	501	355	396	348	390
VII	372	415	498	532	449	467	344	424	445	427
VIII	363	448	517	551	459	451	363	430	337	405
IX	379	466	515	560	464	492	387	405	440	412
X	404	448	519	576	477	531	370	419	485	421
XI	403	542	524	606	510	566	382	429	379	475
XII	409	462	521	621	513	522	389	433	392	478
2008 I	430	533	560	622	539	603	406	439	392	519

PROSJEČNE ZARADE BEZ POREZA I DOPRINOSA PO OPŠTINAMA
AVERAGE WAGES WITHOUT TAXES AND CONTRIBUTIONS BY ACTIVITY SECTOR

u EUR	in EUR										
	Opštine / Municipalities										
	Andrijevica	Bar	Berane	Bijelo Polje	Budva	Danilovgrad	Žabljak	Kolašin	Kotor	Mojkovac	Nikšić
Ø 2007	271	302	278	277	361	285	272	296	339	288	377
I 2008 I 2007	145.2	125.0	124.5	136.3	132.4	134.9	158.1	128.5	121.6	146.3	124.0
2007											
I	241	276	269	251	306	241	241	253	320	246	341
II	240	274	264	261	367	270	288	291	312	274	382
III	252	295	259	264	344	271	260	297	316	296	337
IV	269	295	268	268	363	272	245	285	322	283	368
V	271	300	268	265	349	334	274	308	326	279	388
VI	267	314	273	271	341	273	224	290	329	282	380
VII	260	312	271	266	342	293	282	283	343	278	348
VIII	278	297	282	275	367	276	294	300	329	305	373
IX	267	304	283	284	353	287	279	283	354	281	384
X	288	313	294	297	368	285	291	299	365	290	387
XI	293	313	294	292	394	294	297	329	381	319	402
XII	323	318	307	317	429	313	316	331	373	308	423
2008 I	350	345	335	342	405	325	381	325	389	360	423

/nastavak/	/ continued /									
	Opštine / Municipalities									
	Plav	Plužine	Pljevlja	Podgorica	Rožaje	Tivat	Ulcinj	Herceg Novi	Cetinje	Šavnik
Ø 2007	255	301	334	371	310	331	243	281	251	285
I 2008 I 2007	133.5	187.6	130.0	125.1	141.2	145.4	140.4	118.9	136.5	147.3
2007										
I	221	193	293	339	260	282	198	254	197	239
II	243	304	296	353	336	315	217	257	211	313
III	261	304	315	346	284	306	235	265	261	265
IV	248	285	326	353	293	335	236	295	231	268
V	245	298	325	354	289	318	239	272	235	281
VI	244	298	339	373	292	339	242	271	240	265
VII	254	280	340	361	304	317	236	289	305	290
VIII	248	302	349	372	313	306	248	308	231	275
IX	258	316	348	380	315	335	264	277	299	280
X	275	304	350	391	328	363	256	288	330	286
XI	276	365	356	411	346	394	261	294	260	322
XII	279	314	354	421	347	355	266	298	269	325
2008 I	295	362	381	424	367	410	278	302	269	352

INDEKSI CIJENA PROIZVOĐAČA INDUSTRIJSKIH PROIZVODA
PRODUCERS PRICE INDICES FOR INDUSTRIAL PRODUCTS

	2006 2005	2007 2006	Ø 2007 = 100						
			I 2008 I 2007	2007					
				I	II	III	IV	V	VI
Ukupno	103.6	108.5	111.6	95.1	95.9	97.8	99.3	98.9	99.2
Vađenje ruda i kamena	105.4	110.0	113.6	95.7	100.4	101.9	101.9	101.9	100.7
Prerađivačka industrija	104.1	106.6	106.0	96.8	97.5	100.0	102.2	101.7	102.3
Proizvodnja el. energije, gasa i vode	100.0	113.3	127.7	90.3	90.3	90.3	90.3	90.3	90.3
Vađenje ruda i kamena	105.4	100.0	113.6	95.7	100.4	101.9	101.9	101.9	100.7
Vađenje energetskih sirovina	106.3	112.5	117.1	100.0	100.0	100.0	100.0	100.0	100.0
Vađenje kamenog uglja, lignita i treseta	106.3	112.5	117.1	100.0	100.0	100.0	100.0	100.0	100.0
Vađenje ostalih sirovina i materijala	104.4	108.1	110.6	92.3	100.7	103.5	103.5	103.5	101.2
Vađenje ruda metala	104.5	108.8	111.1	91.4	101.5	104.9	104.9	104.9	101.5
Vađenje ostalih ruda i kamena	104.2	105.1	108.0	96.6	96.6	96.6	96.6	96.6	99.8
Prerađivačka industrija	104.1	106.6	106.0	96.8	97.5	100.0	102.2	101.7	102.3
Prehrambeni proizvodi, pića i duvan	101.9	104.0	111.8	97.8	98.0	98.5	98.5	98.6	98.6
Proizv. prehrambenih proizvoda i pića	103.7	105.0	113.9	97.5	97.7	98.2	98.2	98.3	99.3
Proizvodnja duvanskih proizvoda	82.5	98.0	100.0	100.0	100.0	100.0	100.0	100.0	100.0
Proizvodnja tekstila i tekstilnih proizvoda	126.6	105.8	106.7	97.4	99.6	99.6	99.6	98.7	96.2
Proizvodnja tekstilnih prediva i tkanina	103.2	100.9	102.0	99.6	99.5	99.5	99.5	99.5	99.4
Proizvodnja odjevnih predmeta i krzna	141.3	115.0	116.4	93.2	99.8	99.8	99.8	97.2	90.1
Proizvodnja kože i predmeta od kože	100.0	100.0	100.0	100.0	100.0	100.0	100.0	100.0	100.0
Proizvodnja predmeta od kože i obuće	100.0	100.0	100.0	100.0	100.0	100.0	100.0	100.0	100.0
Prerada drveta i proizvoda od drveta	109.6	101.2	104.2	97.8	97.8	99.6	99.6	101.1	101.1
Proizvodi od drveta, plute i slično	109.6	101.2	104.2	97.8	97.8	99.6	99.6	101.1	101.1
Proizvodnja papira, izdavanje i štampanje	91.5	100.1	100.2	99.9	99.9	99.9	99.9	99.9	99.9
Proizv. celuloze, papira i proizv. od papira	91.5	100.2	100.6	99.7	99.7	99.7	99.7	99.7	99.7
Izdavanje, štampanje i reprodukcija	-	100.0	100.0	100.0	100.0	100.0	100.0	100.0	100.0
Prerada hemijskih proizvoda i vlakana	88.1	121.4	102.5	99.8	99.7	99.7	99.7	99.0	98.3
Proizvodnja hemikalija i hem. proizvoda	88.1	121.4	102.5	99.8	99.7	99.7	99.7	99.0	98.3
Proizvodnja proizv. od gume i plastike	-	102.5	103.1	98.1	98.1	98.1	98.5	98.5	101.1
Proizvodnja proizv. od gume i plastike	-	102.5	103.1	98.1	98.1	98.1	98.5	98.5	101.1
Proizv. proizvoda od ost. nemetalnih min.	101.3	107.3	106.2	96.4	96.4	96.4	99.5	99.1	99.1
Proizv. proizvoda od ost. nemet. minerala	101.3	107.3	106.2	96.4	96.4	96.4	99.5	99.1	99.1
Proizv. osn. metala i metalnih proizvoda	101.9	108.2	105.3	96.0	96.8	100.7	104.3	103.2	104.2
Proizvodnja osnovnih metala	101.9	108.6	105.6	95.8	96.7	100.7	104.5	103.4	104.4
Proizvodnja metal. proizv., osim mašina	-	100.0	100.0	100.0	100.0	100.0	100.0	100.0	100.0
Proizvodnja mašina i uređaja, ostala	112.0	97.0	96.6	103.2	99.7	99.7	99.7	99.7	99.7
Proizvodnja mašina i uređaja, ostala	112.0	97.0	96.6	103.2	99.7	99.7	99.7	99.7	99.7
Prerađivačka industrija, ostala	91.3	103.0	101.1	98.5	99.3	99.3	100.4	100.4	100.4
Proizv. namještaja i raznovrsnih proizv.	91.3	103.0	101.1	98.5	99.3	99.3	100.4	100.4	100.4
Proizvodnja el. energije, gasa i vode	100.0	113.3	127.7	90.3	90.3	90.3	90.3	90.3	90.3
Proizv. električne energije, gasa i vode	100.0	113.3	127.7	90.3	90.3	90.3	90.3	90.3	90.3
Proizv. el. energije, gasa i vode	100.0	113.3	127.7	90.3	90.3	90.3	90.3	90.3	90.3
Izabrane grupe proizvoda									
Elementi i materijal za ugrad. u građevinarstvu	108.9	105.4	103.3	98.4	98.4	98.4	98.7	99.4	100.5

INDEKSI CIJENA PROIZVOĐAČA INDUSTRIJSKIH PROIZVODA
PRODUCERS PRICE INDICES FOR INDUSTRIAL PRODUCTS

Ø 2007 = 100							
2007						2008	
VII	VIII	IX	X	XI	XII	I	
101.3	100.9	101.2	103.7	102.7	104.0	106.2	Total
101.0	99.5	99.5	99.9	98.6	99.1	108.7	Mining and quarrying
100.3	99.9	100.3	100.0	98.6	100.5	102.7	Manufacturing
104.2	104.2	104.2	115.3	115.3	115.3	115.3	Electricity, gas and water supply
101.0	99.5	99.5	99.9	98.6	99.1	108.7	Mining and quarrying
100.0	100.0	100.0	100.0	100.0	100.0	117.1	Extraction of energy producing materials
100.0	100.0	100.0	100.0	100.0	100.0	117.1	Mining of coal and lignite, extraction of peat
101.7	99.1	99.1	99.7	99.7	98.3	102.0	Mining and quarr. exc. energy produc. materials
101.5	98.1	98.1	99.2	96.5	97.5	101.5	Mining of metal ores
102.7	103.5	103.5	102.6	102.6	102.6	104.3	Other mining and quarrying
100.3	99.9	100.3	100.0	98.6	100.5	102.7	Manufacturing
99.4	100.2	101.0	103.6	102.3	103.6	109.4	Manuf. of food produc., beverages and tobacco
100.2	100.2	101.1	104.3	102.7	104.3	111.0	Manufacture of food products and beverages
100.0	100.0	100.0	100.0	100.0	100.0	110.0	Manufacture of tobacco products
96.2	96.6	102.7	103.9	105.6	103.9	103.9	Manufacture of textile and textile products
99.4	99.4	99.4	101.6	101.6	101.6	101.6	Manufacture of textiles
90.1	91.1	109.0	108.4	113.2	108.4	108.4	Manufacture of wearing apparel and fur
100.0	100.0	100.0	100.0	100.0	100.0	100.0	Manufacture of leather and leather products
100.0	100.0	100.0	100.0	100.0	100.0	100.0	Manufac. of leather products and footwear
101.1	99.3	99.3	101.1	101.1	101.1	101.9	Manufacture of wood and wood products
101.1	99.3	99.3	101.1	101.1	101.1	101.9	Manufac. of wood product, cork and similar
99.9	100.2	100.2	100.2	100.2	100.2	100.1	Manufacture of paper, publishing and printing
99.7	100.6	100.6	100.6	100.6	100.6	100.3	Manufac. of pulp, paper and paper products
100.0	100.0	100.0	100.0	100.0	100.0	100.0	Publishing, printing and reproduction
98.3	99.3	99.3	102.3	102.3	102.3	102.3	Manufacture of chemical products and fibres
98.3	99.3	99.3	102.3	102.3	102.3	102.3	Manuf. of chemicals and chemical products
101.4	101.4	101.2	101.2	101.2	101.2	101.1	Manufacture of rubber and plastic products
101.4	101.4	101.2	101.2	101.2	101.2	101.2	Manufacture of rubber and plastic products
101.9	102.4	101.9	102.4	101.9	102.4	102.4	Manufacture of other non-metal minerals
101.9	102.4	101.9	102.4	101.9	102.4	102.4	Manuf. of other non-metal mineral products
100.8	100.0	100.0	98.4	96.4	99.3	101.1	Manufacture of basic metals and metal products
100.8	100.0	100.0	98.3	96.2	99.2	101.1	Manufacture of basic metals
100.0	100.0	100.0	100.0	100.0	100.0	100.0	Manuf. of metal products except machinery
99.7	97.7	99.7	99.7	99.7	99.7	99.7	Manufacture of other machinery and equipment
97.7	97.7	97.7	97.7	97.7	97.7	97.7	Manuf. of other machinery and equipment
100.4	100.4	100.4	100.4	100.4	100.4	99.6	Manufacturing n.e.c.
100.4	100.4	100.4	100.4	100.4	100.4	99.6	Manufac. of furniture and related products
104.2	104.2	104.2	115.3	115.3	115.3	115.3	Electricity, gas and water supply
104.2	104.2	104.2	115.3	115.3	115.3	115.3	Electricity, gas and water supply
104.2	104.2	104.2	115.3	115.3	115.3	115.3	Electricity, gas and water supply
101.0	101.1	101.1	101.0	101.0	101.0	101.6	Chosen groups of products
							Elements and material for building in the construction

INDEKSI CIJENA NA MALO / *RETAIL PRICES INDEX*

Ø 2007 = 100

	Indeks cijena na malo / <i>Retail prices index</i>					
	opšti indeks cijena na malo <i>General retail prices index</i>		poljoprivrednih proizvoda <i>Of agricultural products</i>		industrijskih proizvoda <i>Of industrial products</i>	
	sa sezonskim proizvodima <i>With seasonal products</i>	bez sezonskih proizvoda <i>Without seasonal products</i>	sa sezonskim proizvodima <i>With seasonal products</i>	bez sezonskih proizvoda <i>Without seasonal products</i>	ukupno <i>Total</i>	bez prehrambenih proizvoda <i>Without non-food products</i>
2003	79.9	88.0	87.0	87.2	90.7	90.2
2004	90.9	90.9	82.6	83.5	93.2	93.2
2005	93.9	93.9	84.4	86.2	94.3	94.2
2006	96.0	96.0	91.7	92.2	96.1	95.7
2007	100.0	100.0	100.0	100.0	100.0	100.0
2007						
I	97.0	97.0	94.8	95.0	97.3	96.6
II	97.1	97.1	95.3	96.6	97.2	96.3
III	97.4	97.6	95.5	97.0	97.6	96.7
IV	98.2	97.7	97.2	99.1	98.3	97.3
V	98.6	98.4	100.9	96.6	98.6	98.1
VI	98.7	98.7	96.5	96.4	99.0	98.7
VII	100.3	100.5	95.1	98.6	101.0	102.1
VIII	100.3	100.4	99.6	101.3	100.8	101.7
IX	102.1	102.0	104.9	104.0	101.3	102.1
X	102.7	102.6	105.0	104.5	102.1	102.1
XI	103.7	103.6	105.0	104.0	103.3	104.1
XII	103.9	103.9	110.0	106.9	103.5	104.2
2008						
I	105.4	105.3	112.8	110.0	104.2	104.2
I 2008 / I 2007	108.3	108.2	115.5	113.9	107.1	108.1

/ nastavak /

/ continued /

	Indeks cijena na malo prehrambenih proizvoda <i>Retail prices index of food products</i>			Piće <i>Beverages</i>	Robe <i>Goods</i>	Usluge <i>Services</i>
	prehrambeni proizvodi <i>Food products</i>		industrijsko prehrambeni <i>Industrial – food products</i>			
	sa sezonskim <i>With seasonal</i>	bez sezonskih <i>Without seasonal</i>				
2003	90.6	90.9	91.3	89.6	90.4	77.6
2004	91.9	92.7	93.6	90.9	92.6	83.9
2005	92.6	93.0	94.2	97.3	93.9	94.4
2006	95.7	95.9	96.4	99.1	96.0	95.9
2007	100.0	100.0	100.0	100.0	100.0	100.0
2007						
I	98.0	98.2	98.6	99.7	97.4	97.4
II	98.4	98.5	98.8	100.0	97.3	97.5
III	98.6	98.6	99.0	99.8	97.2	97.5
IV	98.8	99.1	99.1	99.6	97.9	97.6
V	99.2	98.7	99.1	99.6	98.3	97.6
VI	98.7	98.7	99.1	100.2	99.0	98.0
VII	98.5	99.0	99.2	100.0	100.8	98.6
VIII	99.1	99.4	99.2	100.2	100.8	98.6
IX	100.8	100.7	100.1	100.2	101.6	104.3
X	102.9	102.7	102.3	100.0	102.3	104.3
XI	103.1	103.0	102.6	100.2	103.6	104.3
XII	103.9	103.4	102.9	100.5	103.8	104.3
2008						
I	106.1	105.6	105.0	101.0	104.7	108.4
I 2008 / I 2007	107.8	107.3	106.4	101.4	107.5	111.3

INDEKSI TROŠKOVA ŽIVOTA/ COSTS OF LIVING INDEX

	Ukupno <i>Total</i>	Ishrana <i>Food</i>	Duvan i piće <i>Tobacco and beverages</i>	Odjeća i obuća <i>Clothes and footwear</i>	Stan Rent <i>Rent</i>	Ogrijev i osvjetljenje <i>Electricity and fuel</i>	Pokuć- stvo <i>House- hold furnish- ings</i>	Higije- na i zdra- vlje <i>Hygiene and health care</i>	Kultura i razonoda <i>Culture and entertain- ment</i>	Saobraćaj i PTT <i>Transport and communi- cations</i>	Robe <i>Goods</i>	Usluge <i>Services</i>
2003	89.3	91.0	93.2	89.9	86.5	82.9	96.5	95.5	90.8	66.4	90.8	71.6
2004	91.1	91.9	93.7	95.0	92.5	86.7	97.8	97.7	95.8	89.7	92.4	79.6
2005	93.2	91.7	98.0	97.1	95.5	86.8	98.1	98.5	96.4	92.7	93.0	93.3
2006	96.0	95.8	99.4	98.1	96.1	87.4	98.7	98.9	97.6	96.3	96.1	94.7
		100.										
2007	100.0	0	100.0	100.0	100.0	100.0	100.0	100.0	100.0	100.0	100.0	100.0
2007												
I	97.3	98.0	99.8	99.2	98.0	90.5	99.6	99.6	99.1	94.6	97.4	96.0
II	97.4	98.2	99.9	99.6	98.2	90.5	99.7	99.9	99.1	93.2	97.5	96.5
III	97.6	98.2	99.8	99.8	98.2	90.5	99.8	99.9	99.1	94.9	97.7	96.5
IV	97.9	98.7	99.8	100.0	98.2	90.5	99.9	100.0	99.1	96.8	98.2	96.5
V	98.6	99.6	99.9	100.0	98.4	90.6	99.9	100.0	99.1	97.2	98.7	96.6
VI	97.9	98.4	100.1	100.0	98.8	90.6	100.0	100.0	99.2	98.5	98.1	97.1
VII	99.6	97.6	100.2	100.1	101.7	107.7	100.0	100.0	99.2	98.8	99.9	97.6
VIII	100.1	99.2	100.1	100.1	101.7	107.7	100.0	100.0	99.2	97.4	100.5	97.6
IX	102.2	101.3	100.2	100.2	101.7	107.7	100.2	100.0	101.7	106.0	101.8	106.4
X	103.0	102.7	99.9	100.2	101.7	107.7	100.2	100.2	101.8	106.0	102.4	106.4
XI	104.0	103.4	100.0	100.4	101.7	113.0	100.3	100.2	101.7	108.3	103.7	106.4
XII	104.3	104.7	100.3	100.4	101.7	113.0	100.4	100.2	101.7	108.3	104.1	106.4
2008												
I	105.8	107.4	100.3	100.4	101.7	113.0	100.5	100.2	101.7	109.1	105.7	107.1
I 2008 / I												
2007	107.9	108.5	100.3	101.2	103.4	124.9	100.9	100.5	102.6	115.3	107.5	111.4

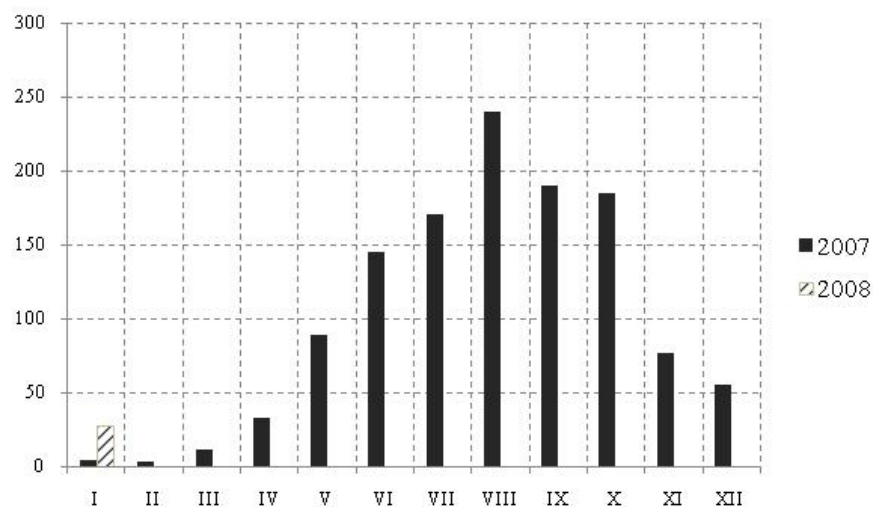
INDEKSI CIJENA NA MALO PO GRUPAMA PROIZVODA
RETAIL PRICE INDEX BY GROUPS OF PRODUCTS

	2006 2005	2007 2006	Ø 2007 = 100						
			I 2008 I 2007	2007					
				I	II	III	IV	V	VI
Proizvodi od žitarica	100.1	101.9	108.0	99.8	99.8	99.8	99.8	99.9	99.9
Povrće svježe – ukupno	116.5	114.6	132.9	92.9	93.4	93.0	95.8	106.1	88.2
Povrće stalno	111.9	108.4	133.3	92.7	93.2	92.7	97.3	93.4	88.4
Voće svježe – ukupno	106.1	111.7	111.4	91.5	94.7	95.3	96.9	98.6	103.4
Voće stalno	106.8	110.8	112.2	91.4	94.4	95.1	96.9	98.2	102.3
Prerađevine od povrća	100.4	101.8	102.8	98.9	99.4	99.5	99.6	99.7	99.8
Prerađevine od voća	98.5	100.2	98.5	99.5	99.8	99.8	99.9	100.0	99.9
Svježe meso	103.9	104.0	101.3	99.5	99.5	99.6	99.6	99.6	99.9
Prerađevine od mesa	100.7	102.6	103.7	98.4	98.6	99.5	99.5	99.5	99.6
Svježa riba	93.9	101.2	108.3	98.5	98.5	98.5	98.5	98.7	98.7
Prerađevine od riba	98.9	102.8	104.7	96.7	99.8	99.8	99.9	99.9	100.0
Kokošja jaja	105.7	111.1	96.0	105.1	105.4	105.6	105.6	97.2	94.7
Mliječni proizvodi	102.3	102.6	111.0	97.7	97.8	97.8	97.8	97.9	97.9
Masnoće	105.2	109.7	129.2	93.0	93.0	93.1	93.2	93.4	93.4
Ostali proizvodi	106.8	107.0	100.9	99.6	100.2	100.4	101.1	100.4	99.6
Alkoholna pića	103.5	102.7	104.0	98.6	99.0	99.2	99.2	99.3	100.3
Duvan	100.5	100.6	100.6	99.1	99.1	99.1	100.1	100.1	100.1
Vunene tkanine	102.6	101.3	102.1	99.5	99.8	99.9	100.0	100.1	100.1
Pamučne tkanine	101.1	101.8	103.1	99.5	99.8	99.8	99.8	99.8	99.9
Svilene tkanine	100.2	100.1	97.5	100.0	100.0	100.0	100.0	100.0	100.0
Konfekcija odjeće	101.5	102.6	101.7	99.0	99.0	99.5	99.9	100.0	100.0
Konfekcija rublja	101.1	102.3	100.7	99.5	99.7	100.0	100.0	100.1	100.1
Obuća	100.5	101.4	101.1	99.3	99.8	99.8	100.0	100.0	100.0
Namještaj	100.2	100.7	100.4	100.0	100.0	100.0	100.0	100.0	100.0
Elek. aparati za domaćinstvo	100.1	99.8	100.0	99.9	99.9	99.9	100.1	100.2	99.9
Poljoprivr. alat i sprave	99.1	104.3	103.3	96.1	96.1	96.1	96.1	96.1	102.3
Tečna goriva i maziva	107.8	99.8	113.3	94.9	90.5	94.7	98.9	99.7	101.4
Građevinski materijal	100.1	112.0	113.2	91.3	93.2	93.2	97.3	100.0	103.4
Ogrijev i osvjtljenje	100.2	115.9	129.0	89.1	89.1	89.1	89.1	89.2	89.2
Školski pribor	100.0	100.1	100.2	99.9	99.9	99.9	99.9	100.0	100.0
Higijenske potrebe	100.3	100.5	100.4	99.9	99.9	99.9	99.9	99.9	99.9
Komunal. – stambene usluge	102.4	107.1	106.3	96.3	96.9	96.9	97.0	97.2	98.0
Zanatske usluge	102.4	103.2	100.8	99.1	100.0	100.0	100.0	100.0	100.0
Kulturne usluge	100.2	100.5	100.7	99.7	99.8	99.8	99.8	99.8	99.8
Saobraćajne i PTT usluge	99.9	104.4	120.4	95.8	95.8	95.8	95.8	95.8	96.2

INDEKSI CIJENA NA MALO PO GRUPAMA PROIZVODA
RETAIL PRICE INDEX BY GROUPS OF PRODUCTS

Ø 2007 = 100							
2007						2008	
VII	VIII	IX	X	XI	XII	I	
99.9	99.9	99.8	100.2	100.6	100.6	107.8	Cereal products
84.0	97.3	108.6	110.6	114.0	116.1	131.8	Vegetables, fresh - total
95.3	103.1	112.4	110.7	108.9	111.9	126.0	Vegetables, continual
103.7	102.6	105.6	104.2	101.1	102.4	103.9	Fruit, fresh - total
103.0	102.7	103.8	104.8	103.6	103.8	104.5	Fruit, continual
99.8	99.8	99.8	100.9	101.3	101.5	101.7	Vegetables, processed canned
100.0	100.0	100.3	100.3	100.3	100.2	98.1	Fruit, processed / canned
100.3	100.3	100.3	100.3	100.5	100.6	100.7	Meat, fresh
99.6	99.9	99.9	101.7	101.8	102.0	102.1	Meat products
98.8	98.8	98.8	98.8	106.7	106.7	106.7	Fresh fish
100.0	100.0	100.0	101.3	101.3	101.3	101.3	Fish, processed / canned
94.7	97.1	97.8	98.0	98.0	100.8	100.9	Chickens' eggs
98.1	98.1	99.5	105.1	105.9	106.4	108.5	Dairy products
93.4	93.4	103.1	116.3	116.9	117.8	120.4	Fats
99.6	99.6	99.6	99.7	99.9	100.3	100.4	Other products
100.3	100.3	100.6	100.7	100.9	101.6	102.4	Beverages
100.1	100.1	100.1	100.1	100.1	100.1	100.1	Tobacco
100.1	100.1	100.1	100.1	100.1	100.1	101.5	Woollen fabrics
99.9	99.9	99.9	100.5	100.6	100.6	102.6	Cotton fabrics
100.0	100.0	100.0	100.0	100.0	100.0	97.4	Silk fabrics
100.0	100.0	100.5	100.7	100.7	100.7	100.7	Ready-made clothing
100.1	100.1	100.1	100.1	100.1	100.1	100.1	Ready-made underwear
100.0	100.0	100.0	100.1	100.5	100.5	100.5	Footwear
100.0	100.0	100.0	100.0	100.0	100.0	100.0	Furniture
99.9	99.9	99.9	99.9	99.9	99.9	99.9	Electrical household appliances
102.3	102.3	102.3	102.3	102.3	105.7	99.4	Agricultural tools and equipment
102.4	99.8	101.3	101.4	107.5	107.5	107.5	Liquid fuels and lubricants
103.4	103.4	103.7	103.7	103.7	103.7	103.9	Building materials
108.8	108.8	108.8	108.8	115.0	115.0	115.0	Electricity and fuel
100.0	100.0	100.1	100.1	100.1	100.1	100.1	School outfit
100.0	100.0	100.0	100.2	100.2	100.2	100.3	Hygiene / toiletries
102.9	102.9	102.9	103.0	102.8	102.8	102.8	Public utilities
100.0	100.1	100.1	100.1	100.3	100.3	100.3	Craft services
99.8	100.3	100.3	100.3	100.3	100.3	100.4	Cultural services
96.2	96.2	108.0	108.1	108.1	108.2	115.8	Transport services

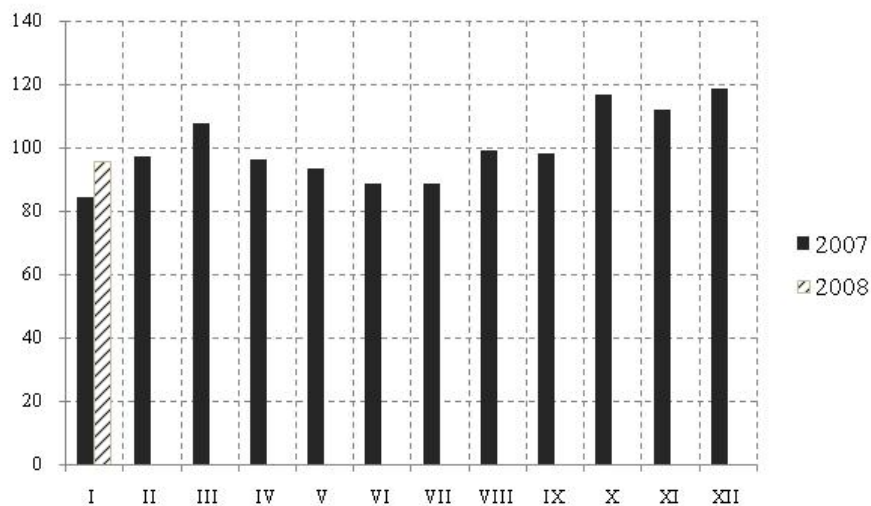
ŠUMARSTVO / FORESTRY



Ø 2007 = 100

	Indeks Index	Ukupno Total	Proizvedeni sortimenti, m³ / Production of forests assortments						
			Četinara / Conifers				Lišćara / Deciduous trees		
			trupci Saw logs	tehničko drvo Lumber	prostorno drvo Space wood	ogrijev- no drvo Firewood	trupci Saw logs	prostorno drvo Space wood	ogrijevno drvo Firewood
2003	90.6	230604	142145	11721	11376	-	30126	6465	24857
2004	95.5	244558	151219	9516	14302	1179	32981	5094	29833
2005	107.9	279228	166742	10156	11521	1949	47719	7460	33510
2006	124.1	325896	194057	11808	12798	1334	46736	15406	43754
2007	100.0	263787	151440	8878	12623	367	45000	14388	31091
2007									
I	3.7	913	543	67	256	-	-	17	30
II	2.9	645	485	60	99	-	-	1	-
III	10.8	3111	1083	89	157	-	220	1484	78
IV	32.9	7323	3949	205	412	-	1314	861	582
V	88.3	18448	11265	240	838	191	4087	396	1431
VI	145.3	31708	17470	575	2063	14	6894	1350	3342
VII	170.7	37567	20905	1172	1522	53	7474	1899	4542
VIII	239.4	52529	29962	1900	1751	38	9442	2280	7156
IX	190.3	42327	24844	1703	2228	22	5417	2379	5734
X	184.5	40234	24735	1748	1685	29	5165	1889	4983
XI	76.6	16817	9601	495	857	14	2954	656	2240
XII	54.6	12165	6598	624	755	6	2033	1176	973
2008									
I	26.6	5783	3950	297	837	-	271	280	148
I 2008 / I 2007	718.9	633.4	727.4	443.3	326.9	-	-	1647.0	493.3

INDUSTRIJA / INDUSTRY
INDEKSI INDUSTRIJSKE PROIZVODNJE – po sektorima
INDICES OF INDUSTRIAL PRODUCTION – by sectors



Ø 2007 = 100

	INDUSTRIJA Ukupno <i>INDUSTRY Total</i>	Vađenje ruda i kamena <i>Mining and quarrying</i>	Prerađivačka industrija <i>Manufacturing</i>	Proizvodnja električne energije, gasa i vode <i>Electricity, gas and water supply</i>
2003	88.5	100.7	78.7	127.6
2004	100.9	95.6	89.2	154.3
2005	99.0	95.7	91.4	133.6
2006	99.9	98.5	91.5	137.7
2007	100.0	100.0	100.0	100.0
2007				
I	84.5	72.7	86.0	82.2
II	97.2	89.0	83.2	162.1
III	107.5	96.2	93.8	172.0
IV	96.2	93.8	90.0	124.1
V	93.3	89.9	98.1	73.5
VI	88.7	68.1	106.1	19.5
VII	88.6	98.1	100.2	34.1
VIII	99.2	110.1	110.3	45.9
IX	98.0	122.4	107.9	45.3
X	116.7	130.7	117.2	109.8
XI	111.7	166.4	97.9	152.6
XII	118.4	62.6	109.3	178.9
2008				
I	95.6	103.9	93.4	102.6
I 2008 / I 2007	113.1	142.9	108.6	124.8

INDEKSI INDUSTRIJSKE PROIZVODNJE – po podsektorima
INDICES OF INDUSTRIAL PRODUCTION – by sub-sectors

Ø 2007 = 100

	Vadenje energetskih sirovina <i>Extraction of energy producing materials</i>	Vadenje ostalih sirovina i materijala <i>Mining and quarrying except energy producing materials</i>	Prehrambeni proizvodi, pića i duvan <i>Manufacture of food products, beverages and tobacco</i>	Proizvodnja tekstila i tekstilnih proizvoda <i>Manufacture of textile and textile products</i>
2003	133.5	87.0	90.6	99.9
2004	125.6	83.1	114.1	117.0
2005	108.9	90.3	111.1	92.8
2006	128.0	86.2	100.7	108.2
2007	100.0	100.0	100.0	100.0
2007				
I	117.1	54.3	73.6	85.2
II	131.0	71.6	78.0	73.8
III	133.5	80.7	84.1	100.0
IV	117.5	84.1	98.0	136.6
V	71.6	97.5	97.5	123.7
VI	8.5	92.8	111.4	75.1
VII	13.9	133.0	121.2	1.1
VIII	90.7	118.1	145.8	138.0
IX	78.7	140.5	86.4	84.6
X	137.0	128.0	105.4	125.4
XI	125.7	183.2	86.8	128.2
XII	174.8	16.2	111.8	128.3
2008				
I	155.8	82.4	70.0	131.5
I 2008 / I 2007	133.0	151.7	95.1	154.3

/nastavak

/continued/

	Proizvodnja kože i predmeta od kože <i>Manufacture of leather and leather products</i>	Prerada drveta i proizvodi od drveta <i>Manufacture of wood and wood products</i>	Proizvodnja papira, izdavanje i štampanje <i>Manufacture of paper, publishing and printing</i>	Proizvodnja hemijskih proizvoda i vlakana <i>Manufacture of chemical products and fibres</i>
2003	371.7	61.8	87.5	21.4
2004	17.5	74.5	77.9	35.7
2005	43.9	99.7	98.6	105.4
2006	61.3	98.7	94.6	65.6
2007	100.0	100.0	100.0	100.0
2007				
I	79.1	22.2	82.7	78.8
II	69.7	22.6	80.6	84.0
III	297.7	50.2	87.1	94.6
IV	297.7	58.3	86.6	52.2
V	-	83.2	91.9	96.1
VI	79.1	113.4	149.6	93.8
VII	-	135.1	149.0	72.2
VIII	227.9	213.3	153.4	114.5
IX	-	140.5	85.9	118.6
X	79.1	153.3	71.2	130.5
XI	69.7	111.1	77.1	97.1
XII	-	96.8	84.9	137.6
2008				
I	-	35.4	68.3	97.1
I 2008 / I 2007	-	160.2	82.6	123.2

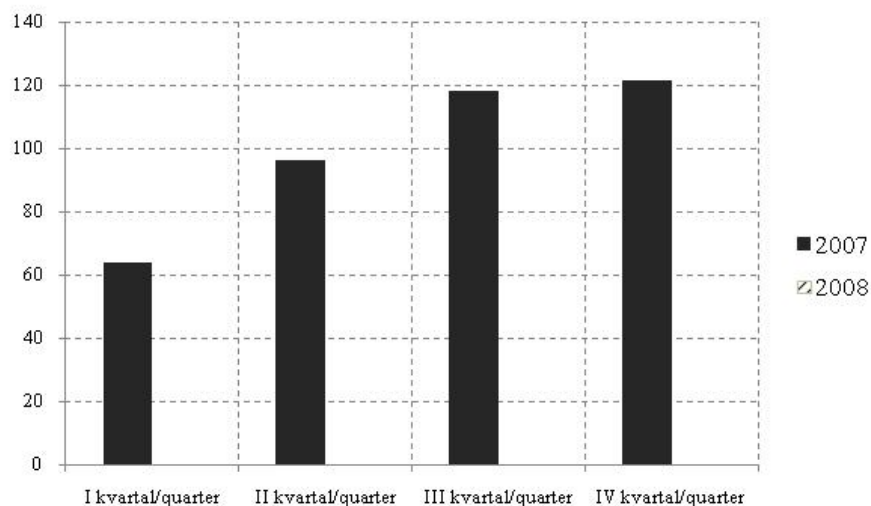
INDEKSI INDUSTRIJSKE PROIZVODNJE – po podsektorima
INDICES OF INDUSTRIAL PRODUCTION – by sub-sectors

<i>/nastavak /</i>		<i>Ø 2007 = 100</i> <i>/continued/</i>		
	Proizvodnja proizvoda od gume i plastičnih masa <i>Manufacture of rubber and plastic products</i>	Proizvodnja proizvoda od ostalih nemetalnih minerala <i>Manufacture of other non-metal minerals</i>	Proizvodnja osnovnih metala i metalnih proizvoda <i>Manufacture of basic metals and metal products</i>	Proizvodnja mašina i uređaja, ostala <i>Manufacture of other machinery and equipment</i>
2003	395.2	105.1	81.6	36.8
2004	150.2	99.9	92.6	35.5
2005	141.5	99.5	86.4	45.8
2006	98.4	100.4	90.5	103.4
2007	100.0	100.0	100.0	100.0
2007				
I	42.0	104.8	90.6	71.7
II	141.7	91.8	86.4	83.2
III	129.1	101.5	95.6	109.0
IV	193.7	95.7	91.8	117.6
V	85.3	101.7	97.3	109.0
VI	85.3	99.1	106.7	109.0
VII	84.3	96.2	102.3	60.2
VIII	77.6	108.1	98.2	109.0
IX	73.6	99.6	106.3	127.3
X	23.9	103.1	118.4	114.7
XI	135.1	95.2	98.7	100.4
XII	128.4	103.2	107.7	88.9
2008				
I	162.6	102.9	98.1	71.0
I 2008 / I 2007	387.1	98.2	108.3	99.0

<i>/nastavak /</i>		<i>/continued/</i>		
	Proizvodnja mašina, uređaja i aparata za domaćinstvo <i>Manufacture of machines, devices and apparatus for households</i>	Proizvodnja saobraćajnih sredstava <i>Manufacture of transport equipment</i>	Prerađivačka industrija, ostala <i>Manufacturing n.e.c.</i>	Proizvodnja električne energije, gasa i vode <i>Electricity, gas and water supply</i>
2003	-	98.1	27.9	127.6
2004	-	111.9	18.8	154.3
2005	54.5	103.9	26.2	133.7
2006	62.3	102.4	101.3	137.8
2007	100.0	100.0	100.0	100.0
2007				
I	56.5	47.6	122.5	82.2
II	94.1	44.4	63.2	162.1
III	47.1	98.4	66.8	172.0
IV	70.6	107.9	71.0	124.1
V	117.6	133.3	109.3	73.5
VI	235.3	123.8	88.6	19.5
VII	-	117.5	69.0	34.1
VIII	80.0	98.4	85.3	45.9
IX	211.8	98.4	118.3	45.3
X	188.2	111.2	116.5	109.8
XI	65.9	127.0	143.4	152.6
XII	32.9	92.1	146.1	178.9
2008				
I	65.9	107.9	181.3	102.6
I 2008 / I 2007	116.6	226.7	148.0	124.8

GRADEVINARSTVO / CONSTRUCTION

Ø 2007 = 100



VRIJEDNOST IZVRŠENIH I UGOVORENIH RADOVA, BROJ ZAPOSLENIH I IZVRŠENI EFEKTIVNI ČASOVI VALUE OF FINALIZED AND ORDERED WORKS, NUMBER OF EMPLOYEES AND FINALIZED EFFECTIVE HOURS

	Indeks <i>Index</i>	Vrijednost izvršenih radova u hiljadama EUR <i>Value of finalized construction works</i>	Prosječan broj radnika <i>Average number of employees</i>	Indeks <i>Index</i>	Izvršeni efektivni časovi u 000 <i>Finalized effective hours in thousands</i>	
2003	23.4	46239	2074	52.6	4351	2003
2004	27.3	54051	2011	54.5	4514	2004
2005	37.1	73252	2343	64.6	5345	2005
2006	103.3	204248	3525	101.7	8424	2006
2007	100	197639	3522	100	8280	2007
2007 I kvartal	63.9	31581	3189	88.9	1840	2007 I quarter
II kvartal	96.2	47508	3474	102.1	2114	II quarter
III kvartal	118.3	58464	3580	102.5	2122	III quarter
IV kvartal	121.6	60089	3843	106.5	2204	IV quarter

/ nastavak/

/ continued /

	Indeks <i>Index</i>	Nove narudžbe na zgradama u hilj. EUR <i>New orders on buildings, thous. EUR</i>	Indeks <i>Index</i>	Nove narudžbe na ostalim građevinama u hilj. EUR <i>New orders on other buildings, thous. EUR</i>	
2006	70.9	99327	82.6	60720	2006
2007	100	140006	100	73539	2007
2007 I kvartal	37.2	13033	95.7	17596	2007 I quarter
II kvartal	83.1	29069	125.4	23054	II quarter
III kvartal	50.9	17833	65.0	11944	III quarter
IV kvartal	228.8	80071	113.9	20945	IV quarter

SPOLJNA TRGOVINA / EXTERNAL TRADE
Izvoz i uvoz prema zemljama namjene – porijekla ,mil. EUR
Exports and imports by countries of destination – origin, mill EUR

	Januar - Decembar / January - December						
	Izvoz / Export			Uvoz / Import			
	2006	2007	Indeks / Index 2007/2006	2006	2007	Indeks / Index 2007/2006	
UKUPNO	627.5	599.0	95.5	1482.7	2134.4	144.0	TOTAL
Evropa	617.5	594.7	96.3	1303.9	1874.4	143.8	Europe
Albanija	10.3	16.3	158.6	3.5	10.5	300.4	Albania
Austrija	2.0	2.0	101.2	47.7	51.7	108.3	Austria
Belgija-Luxemburg	0.2	0.7	412.5	7.8	17.5	224.7	Belgium – Luxembourg
BiH (sa Rep. Srpskom)	28.5	30.3	106.0	40.9	72.0	175.9	B&H (with RS)
Bugarska	0.1	0.4	680.6	6.3	7.2	115.7	Bulgaria
Velika Britanija	1.6	2.9	175.5	15.9	26.5	166.3	Great Britain
Grčka	68.4	73.7	107.8	75.2	74.8	99.5	Greece
Danska	0.1	0.0	5.4	5.5	2.4	43.9	Denmark
Italija	239.2	164.3	68.7	141.1	208.3	147.6	Italy
Mađarska	44.2	66.3	149.7	16.5	20.8	126.1	Hungary
Njemačka	5.7	9.3	163.9	154.5	213.3	138.1	Germany
Slovenija	23.0	26.4	114.4	52.8	72.3	136.8	Slovenia
Poljska	0.2	0.0	2.5	13.8	25.2	183.0	Poland
Makedonija	2.0	1.0	51.2	15.6	22.3	143.1	Macedonia
Rumunija	1.3	0.1	10.5	27.2	14.0	51.4	Romania
Ruska federacija	0.9	9.2	**	38.3	27.2	70.9	Russian Federation
Hrvatska	8.8	12.5	141.9	60.4	83.4	138.1	Croatia
Francuska	0.4	0.2	50.2	37.5	56.2	149.9	France
Holandija	0.2	2.5	**	16.2	16.5	101.8	Netherlands
Češka Republika	1.5	2.9	196.1	21.8	28.5	131.2	Czech Republic
Švajcarska	0.4	0.8	177.6	51.4	47.9	93.1	Switzerland
Švedska	0.6	0.1	21.2	11.2	48.9	437.0	Sweden
Španija	0.1	0.2	137.6	13.7	25.0	182.1	Spain
Turska	0.4	1.1	251.7	12.9	22.7	176.8	Turkey
Ostale zemlje	177.2	171.7	96.9	416.2	679.3	163.2	Other countries
Azija	2.1	0.8	39.2	125.4	191.5	152.7	Asia
Iran	0.0	0.0	0.0	0.1	0.4	303.0	Iran
Izrael	0.9	0.0	4.3	2.9	3.9	137.9	Israel
Indija	0.0	0.0	0.0	3.0	4.7	156.1	India
Indonezija	0.0	0.0	0.0	1.0	2.2	223.2	Indonesia
Japan	0.0	0.0	494.4	38.1	43.7	114.8	Japan
Kina	0.0	0.1	**	59.1	97.7	165.2	China
Koreja	0.0	0.0	5.7	9.2	20.8	226.5	Korea
Tajland	0.0	0.0	**	2.1	4.4	210.0	Thailand
Hong Kong	0.0	0.0	**	0.9	1.6	177.1	Hong Kong
Ostale zemlje	1.2	0.7	58.9	9.0	11.9	132.8	Other countries
Afrika	6.9	1.8	26.3	1.4	2.3	168.5	Africa
Egipat	1.8	1.4	79.6	0.5	0.7	164.1	Egypt
Etiopija	0.0	0.0	0.0	0.0	0.0	193.4	Ethiopia
Libijska Araps.Džamaharija	0.9	0.1	11.5	0.0	0.0	0.0	Libyan Arab.Jamahiriyia
Maroko	0.0	0.0	0.0	0.3	0.5	153.6	Morocco
Tunis	2.6	0.0	**	0.1	0.3	246.0	Tunis
Ostale zemlje	1.6	0.3	17.1	0.5	0.8	161.7	Other countries
Amerika	1.0	1.7	172.6	51.7	65.8	127.3	America
Kanada	0.1	0.1	56.4	1.0	2.1	203.9	Canada
Panama	0.0	0.1	**	0.7	0.3	36.1	Panama
SAD	0.5	1.5	299.1	31.7	36.3	114.4	USA
Argentina	0.0	0.0	0.0	1.5	2.0	131.9	Argentina
Brazil	0.0	0.0	0.0	12.8	18.5	143.9	Brazil
Ekvador	0.0	0.0	0.0	2.7	3.2	116.7	Ecuador
Kolumbija	0.3	0.0	**	0.1	0.1	72.8	Columbia
Peru	0.0	0.0	0.0	0.0	0.0	51.7	Peru
Devičanska ostrva	0.0	0.0	**	0.0	0.0	42.1	The Virgin Islands
Ostale zemlje	0.0	0.0	**	1.0	3.4	351.2	Other countries
Australija i Okeanija	0.0	0.0	88.8	0.4	0.4	103.1	Australia and Oceania
Australija	0.0	0.0	93.0	0.2	0.3	163.5	Australia
Novi Zeland	0.0	0.0	**	0.1	0.0	15.5	New Zealand
Ostale zemlje	0.0	0.0	0.0	0.0	0.0	50.0	Other countries

SPOLJNA TRGOVINA / EXTERNAL TRADE
Izvoz i uvoz robe, mil. EUR / Exports and imports of goods, mill EUR

	Januar - Decembar / January - December						
	Izvoz / Export			Uvoz / Import			
	2006	2007	Indeks Index 2007/2006	2006	2007	Indeks Index 2007/2006	
Ukupno	627.5	599.0	95.5	1482.7	2134.4	144.0	Total
Zive životinje	0.0	0.0	239.7	4.7	5.5	117.3	Live animals
Meso i drugi klanični proizvodi za jelo	1.7	2.1	121.2	32.4	40.8	126.1	Meat and edible meat offal
Ribe, ljuskari,mekušci i ostali vodeni beskičmenjaci	0.6	0.4	69.5	3.9	5.9	152.4	Fish and crustaceans, molluscs and other aquatic invertebrates
Mlijeko i proizvodi od mlijeka, živinska i ptičja jaja, prirodni med, jestivi proizvodi životinskog porijekla, nepomenuti niti obuhvaćeni na drugom mjestu	0.2	0.1	39.9	21.7	33.5	154.1	Dairy produce; birds' eggs; natural honey; edible products of animal origin, not elsewhere specified or included
Proizvodi životinskog porijekla, na drugom mjestu nepomenuti niti obuhv.	0.0	0.0	34.4	0.2	0.3	183.9	Products of animal origin, not elsewhere specified or included
Živo drveće i druge biljke; lukovice, korijenje i slično; siječeno cvijeće i ukrasno lišće	0.1	0.1	57.2	1.8	2.8	156.9	Live trees and other plants; bulbs, roots and the like; cut flowers and ornamental foliage
Povrće, korijenje i krtole za jelo	2.4	4.0	165.9	2.5	4.4	175.2	Edible veg. and certain roots and tubers
Voće za jelo, uključujući jezgrasto voće; kore agruma ili dinja i lubenica	20.6	15.4	74.5	6.8	8.7	128.8	Edible fruit and nuts; peel of citrus fruits or melons
Kafa, čaj, mate čaj i začini	0.3	0.2	78.9	14.2	14.7	103.8	Coffee, tea, maté and spices
Žitarice	0.0	0.0	**	5.1	5.5	108.0	Cereals
Proizvodi mlinske industrije; slad; skrob; inulin; gluten od pšenice	0.1	0.0	1.8	12.0	22.5	187.9	Products of the milling industry; malt; starches; inulin; wheat gluten
Uljano sjemenje i plodovi; razno zmevlje, sjeme i plodovi; industrijsko i ljekovito bilje; slama i stočna hrana (kabasta)	0.2	0.1	73.9	1.3	1.6	120.7	Oil seeds and oleaginous fruits; miscellaneous grains, seeds and fruit; industrial or medicinal plants; straw and fodd
Seljak;gume, smole i ostali biljni sokovi i ekstrakti	0.0	0.0	0.0	0.1	0.0	75.5	Lac; gums, resins and other vegetable saps and extracts
Biljni materijali za pletarstvo; biljni proiz na drugom mjestu nepomenuti niti obuh.	0.0	0.0	0.0	0.0	0.0	102.6	Vegetable plaiting materials; vegetable produc. not elsewhere specified or incl.
Masnoće i ulja životinskog ili biljnog porijekla i proizvodi njihovog razlaganja; prerađene jestive masnoće; voskovi životinskog i biljnog porijekla	0.4	0.0	12.5	10.9	14.0	127.9	Animal or vegetable fats and oils and their cleavage products; prepared edible fats; animal or vegetable waxes
Prerađevine od mesa, riba, ljuskara, mekušaca ili ostalih vodenih beskičmenjaka	0.7	1.9	262.5	8.1	19.1	235.1	Preparations of meat, off fish or of crustaceans, molluscs or other aquatic invertebrates
Šećer i proizvodi od šećera	1.2	1.8	150.3	11.8	12.5	105.6	Sugars and sugar confectionery
Kakao i proizvodi od kakaa	0.4	0.6	143.4	7.8	14.0	178.9	Cocoa and cocoa preparations
Proizvodi na bazi žitarica, brašna, skroba ili mlijeka; poslastičarski proizvodi	2.1	1.2	56.9	13.0	21.2	163.1	Preparations of cereals, flour, starch or milk; pastrycooks' products
Proizvodi od povrća, voća, uključujući jezgrasto voće, i ostalih dijelova bilja	0.3	0.6	204.5	8.1	20.4	252.5	Preparations of vegetables, fruit, nuts or other parts of plants
Razni proizvodi za ishranu	0.2	0.6	385.7	13.6	22.7	166.7	Miscellaneous edible preparations
Pića, alkoholi i sirće	26.0	31.5	121.2	35.7	57.5	161.2	Beverages, spirits and vinegar
Ostaci i otpaci prehrambene industrije; pripremljena hrana za životinje	0.0	0.0	221.9	7.4	15.9	215.8	Residues and waste from the food industries; prepared animal fodder
Duvan i proizvodi zamjene duvana	12.5	21.6	172.5	5.7	18.1	318.9	Tobacco and manuf. tobacco substitutes
So,sumpor; zemlja i kamen:gips,kreč i cement	2.1	2.5	118.0	19.0	41.1	216.2	Salt; sulphur; earths and stone; plastering materials, lime and cement
Rude, zgure i pepeo	3.9	4.0	101.7	0.2	0.2	99.1	Ores, slag and ash
Mineralna goriva, mineralna ulja i proizvodi njihove destilacije;bitumenozne materije; mineralni voskovi	40.4	48.3	119.6	238.7	247.0	103.5	Mineral fuels, mineral oils and products of their distillation; bituminous substances; mineral waxes
Neorganski hemijski proizvodi; organska ili neorganska jedinjenja plemenitih metala, metala rijetkih zemlji, radioaktivnih elemenata i izotopa	0.2	0.0	30.5	22.8	12.9	56.4	Inorganic chemicals; organic or norga-nic compounds of precious metals, of rare-earth metals, of radioactive lemen-ts or of isotopes
Organski hemijski proizvodi	0.1	0.0	31.4	1.7	2.8	160.3	Organic chemicals
Farmaceutski proizvodi	10.3	8.3	80.2	42.7	48.6	113.7	Pharmaceutical products
Đubriva	0.0	0.0	0.0	1.8	2.0	110.6	Fertilisers
Ekstrati za štavljenje ili bojenje;tanini i njihovi derivati;boje, pigmenti i ostale meterije za bojenje; boje i lakovi; kitovi i ostale zaptivne mase;mastila	0.4	1.4	319.6	12.2	21.4	175.0	Tanning or dyeing extracts; tannins and their derivatives; dyes, pigments and other colouring matter; paints and varnishes; putty and other mastics; inks
Eterična ulja i rezinoidi; parfimerijski, kozmetički i toaletni proizvodi	1.9	4.4	238.7	11.9	18.4	154.4	Essential oils and resinoids; perfumery, cosmetic or toilet preparations

SPOLJNA TRGOVINA / EXTERNAL TRADE
Izvoz i uvoz robe, mil. EUR / Exports and imports of goods, mill EUR

/ nastavak /	Januar - Decembar / January - December						/continued /
	Izvoz / Export			Uvoz / Import			
	2006	2007	Indeks Index 2007/2006	2006	2007	Indeks Index 2007/2006	
Sapun, organska površinska aktivna sredstva,preparati za pranje,preparati za podmazivanje,vještački voskovi,pripremljeni voskovi, preparati za poliranje i čišćenje, svijeće i slični proizvodi, paste za modelovanje "zubarski voskovi" i zubarski preparati n	0.2	0.2	129.3	12.4	17.2	139.0	Soap, organic surface-active agents, washing preparations, lubricating preparations, artificial waxes, prepared waxes, polishing or scouring preparations, candles and similar articles, modelling pastes, 'dental waxes' and dental preparatio
Bjelančevinaste materije;modifikovani skrobovi;lijepkovi;enzimi	0.0	0.0	409.5	1.9	3.1	168.6	Albuminoidal substances; modified starches; glues; enzymes
Eksplzivni; pirotehnički proizvodi; šibice; piroforme legure; zapaljivi preparati	0.5	0.8	144.2	0.7	1.3	175.1	Explosives; pyrotechnic products; matches; pyrophoric alloys; certain combustible preparations
Proizvodi za fotografske ili kinematografske svrhe	0.1	0.1	139.6	1.2	1.5	123.1	Photographic or cinematographic goods
Razni proizvodi hemijske industrije	0.1	0.2	386.5	9.0	14.6	162.3	Miscellaneous chemical products
Plastične mase i proiz. od plastičnih masa	0.4	0.6	134.7	35.8	62.6	175.2	Plastics and articles thereof
Kaučuk i proizvodi od kaučuka i gume	0.4	0.6	143.5	9.6	14.8	154.6	Rubber and articles thereof
Sirova sitna i krupna koža, sa dlakom ili bez dlake(osim krzna) i štavljena koža	3.9	3.6	93.7	0.1	0.1	165.7	Raw hides and skins (other than furskins) and leather
Proizvodi od kože, sedlarski i sarački proizvodi, predmeti za putovanje, ručne torbe i slični kontejneri i proizvodi od životinjskih crijeva (osim svilenog ketguta)	0.1	0.1	147.3	2.7	6.5	239.1	Articles of leather; saddlery and harness; travel goods, handbags and similar containers; articles of animal gut (other than silkworm gut)
Prirodno i vještačko krzno; proizvodi od krzna	0.0	0.0	0.0	0.0	0.2	1003.6	Furskins and artificial fur; manufactures thereof
Drvo i proizvodi od drveta;drveni ugalj	20.1	20.7	103.0	20.1	32.3	160.5	Wood and artic. of wood; wood charcoal
Pluta i proizvodi od plute	0.0	0.0	0.0	1.1	1.3	122.5	Cork and articles of cork
Proizvodi od slame, esparta ili ostalih materijala za pletariju; korparskih i pletarskih proizvoda	0.0	0.0	99.0	0.1	0.3	270.0	Manufactures of straw, of esparto or of other plaiting materials; basketware and wickerwork
Celuloza od drveta ili drugih vlaknastih celuloznih materijala; hartija i karton (otpaci i ostaci) za ponovnu preradu	0.2	0.3	112.0	0.2	0.3	172.2	Pulp of wood or of other fibrous cellulosic material; recovered (waste and scrap) paper or paperboard
Hartija i karton; proizvodi od hartijine pulpe, hartije ili kartona	1.2	1.9	153.9	20.7	26.8	129.7	Paper and paperboard; articles of paper pulp, of paper or of paperboard
Štampane knjige, novine, slike i ostali proizvodi grafičke industrije, rukopisi, kucani tekstovi i planovi	1.6	2.1	131.1	14.3	22.9	160.2	Printed books, newspapers, pictures and other products of the printing industry; manuscripts, typescripts and plans
Svila	0.0	0.0	0.0	0.0	0.0	253.5	Silk
Vuna,fina ili gruba životinjska dlaka, predivo i tkanine od konjske dlake	0.2	0.1	38.5	0.1	0.1	65.4	Wool, fine or coarse animal hair; horsehair yarn and woven fabric
Pamuk	0.1	0.1	79.9	0.9	1.0	110.9	Cotton
Ostala biljna tekstilna vlakna; predivo od hartije i tkanine od prediva od hartije	0.0	0.0	0.0	0.0	0.0	144.5	Other vegetable textile fibres; paper yarn and woven fabrics of paper yarn
Vještački ili sintetički filamenti	0.0	0.0	29.7	0.4	0.6	143.2	Man-made filaments
Vještačka ili sintetička vlakna, sječena	0.0	0.0	149.5	0.6	0.8	134.5	Man-made staple fibres
Vata, filc i netkani materijal; specijalna prediva; kanapi, užad, konopci i kablovi i proizvodi od njih	0.0	0.0	152.6	1.0	1.4	136.0	Wadding, felt and nonwovens; special yarns; twine, cordage, ropes and cables and articles thereof
Tepisi i ostali tekstilni podni pokrivači	0.0	0.0	179.5	3.5	4.0	116.8	Carpets and other textile floor cover.
Specijalne tkanine; taftovani tekstilni proizv.; čipke; tapiserije; pozamanterija, vez	0.0	0.0	**	0.1	0.1	117.3	Special woven fabrics; tufted textile fabrics; lace; tapestries; trimmings; embroid.
Tekst. tkanine, impregnirane, premazane, prevučene, prekrivene ili laminirane, tekstilni proizvodi pogodni za tehn. svrhe	0.0	0.0	0.0	0.5	0.7	142.5	Impregnated, coated, covered or laminated textile fabrics; textile articles of a kind suitable for industrial use
Pleteni ili kukičani materijali	0.0	0.0	9.7	0.1	0.1	84.6	Knitted or crocheted fabrics
Odjeća i pribor za odjeću, pleteni ili kukičani	0.0	0.1	517.6	4.5	8.3	186.8	Articles of apparel and clothing accessories, knitted or crocheted
Odjeća i pribor za odjeću, osim pletenih ili kukičanih proizvoda	0.7	0.7	91.0	13.1	25.8	197.2	Articles of apparel and clothing accessories, not knitted or crocheted
Ostali gotovi proizvodi od tekstila; setovi,iznošena, dotrajala odjeća i dotrajali proizvodi od tekstila; krpe	0.1	0.1	81.7	4.4	6.6	148.9	Other made-up textile articles; sets; worn clothing and worn textile articles; rags
Obuća, kamašne i slični proizvodi; djelovi tih proizvoda	0.4	0.5	127.8	15.9	26.3	165.7	Footwear, gaiters and the like; parts of such articles

SPOLJNA TRGOVINA / EXTERNAL TRADE
Izvoz i uvoz robe, mil. EUR / Exports and imports of goods, mill EUR

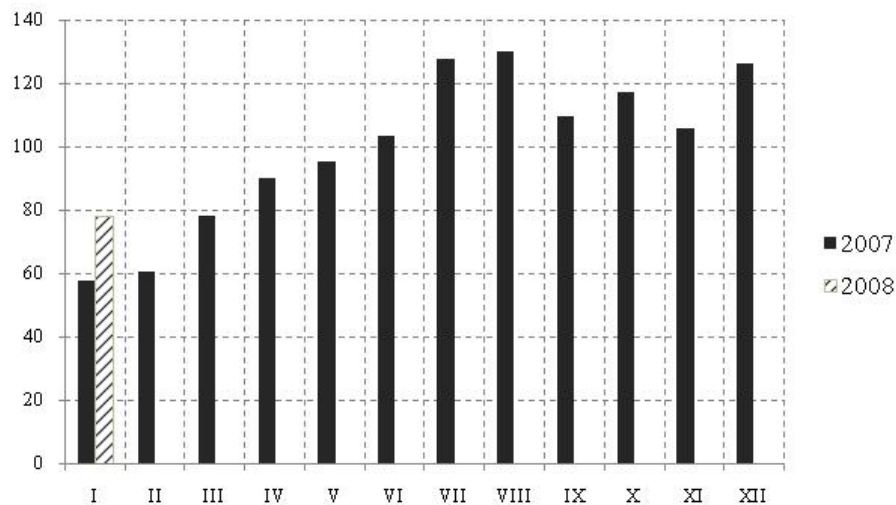
/ nastavak /

/ continued /

naslovak /	Januar - Decembar / January - December						
	Izvoz / Export			Uvoz / Import			
	2006	2007	Indeks Index 2007/2006	2006	2007	Indeks Index 2007/2006	
Šeširi, kape i ostale pokrivke za glavu i djel.	0.4	0.5	127.8	15.9	26.3	165.7	Headgear and parts thereof
Kišobrani, suncobrani, štapovi, štapovi- stolice, bičevi, korbači i njihovi djelovi	0.0	0.0	289.0	0.4	0.6	141.9	Umbrellas, sun umbrellas, walking- sticks, seat-sticks, whips, riding-crops and parts thereof
Perje i paperje, preparirano i proizvodi izradjeni od perja i paperja; vještačko cvijeće;proizvodi od ljudske kose	0.0	0.0	113.1	0.9	1.5	160.4	Prepared feathers and down and arti- cles made of feathers or of down; arti- ficial flowers; articles of human hair
Proizvodi od kamena, gipsa, cementa, betona, azbesta, liskuna ili sličnih mater.	0.0	0.0	81.7	0.1	0.2	183.1	Articles of stone, plaster, cement, asbestos, mica or similar materials
Keramički proizvodi	0.8	0.8	103.1	14.8	16.7	113.1	Ceramic products
Staklo i proizvodi od stakla	0.2	0.2	93.4	27.5	47.8	173.7	Glass and glassware
Prirodni ili kultivisani biseri, drago ili poludrago kamenje,plemeniti metali, metali platinirani plemenitim metalima, i proizvodi od njih; imitacije nakita; metalni novac	0.2	0.2	133.3	12.5	15.5	124.2	Natural or cultured pearls, precious or semi-precious stones, precious metals, metals clad with precious metal, and artic. thereof; imitation jewellery; coin
Gvožđe i čelik	0.2	0.2	139.1	0.8	0.7	90.7	Iron and steel
Proizvodi od gvožđa i čelika	55.0	71.3	129.5	43.4	69.7	160.4	Articles of iron or steel
Bakar i proizvodi od bakra	12.1	17.9	148.2	46.4	82.4	177.5	Copper and articles thereof
Nikl i proizvodi od nikla	6.9	7.5	109.7	2.6	3.7	140.6	Nickel and articles thereof
Aluminijum i proizvodi od aluminijuma	0.0	0.0	0.0	0.5	2.0	370.2	Aluminium and articles thereof
Olovo i proizvodi od olova	333.8	281.7	84.4	15.9	28.6	180.6	Lead and articles thereof
Cink i proizvodi od cinka	0.1	0.3	290.6	0.0	0.1	170.9	Zinc and articles thereof
Kalaj i proizvodi od kalaja	0.0	0.0	39.6	0.3	0.4	136.3	Tin and articles thereof
Ostali prosti metali; kremeti; proiz. od njih	0.0	0.0	**	0.0	0.0	232.0	Other base metals; cermets; art. thereof
Alati, nožarski proizvodi, kašike i viljuške, od prostih metala; njihovi djelovi od prostih metala	0.0	0.0	0.0	0.1	0.1	99.5	Tools, implements, cutlery, spoons and forks, of base metal; parts thereof of base metal
Razni proizvodi od prostih metala	0.2	0.4	168.6	8.2	7.9	96.4	Miscellaneous articles of base metal
Nuklearni reaktori, kotlovi, mašine i mehanički uređaji i njihovi djelovi	2.1	2.4	117.8	7.0	9.6	137.8	Nuclear reactors, boilers, machinery and mechanical appliances; parts ther.
Električne mašine i oprema i njihovi djelovi; aparati za snimanje i reprodukciju zvuka;televizijski aparati za snimanje i reprodukciju slike i zvuk, djelovi i pribor za te proizvode	12.6	12.4	98.8	126.2	191.6	151.8	Electrical machinery and equipment and parts thereof; sound recorders and reproducers, television image and sound recorders and reproducers, and parts and accessories of such articles
Sinska vozila i njihovi djelovi; željeznički i tramvajski kolosječni sklopovi i pribor i njihovi djelovi, mehanička i elektromehanička signalna oprema za saobraćaj svih vrsta	3.6	4.2	116.6	104.4	188.4	180.5	Railway or tramway locomotives, rolling- stock and parts thereof; railway or tramway track fixtures and fittings and parts thereof; mechanical (including electro-mechanical) traffic signalling equipment of all kinds
Vozila, osim željezničkih ili tramvajskih šinskih vozila i njihovi djelovi i pribor	0.0	0.4	271.4	3.6	3.6	101.3	Vehicles other than railway or tramway rolling-stock, and parts and acc. Ther.
Vazduhopl., kosmičke letjelice i njihovi dj.	6.5	3.1	47.7	130.9	242.7	185.4	Aircraft, spacecraft, and parts thereof
Brodovi, čamci i ploveće konstrukcije	0.5	1.0	186.2	1.3	0.5	39.0	Ships, boats and floating structures
Optički, fotografski, kinematografski, mje-mi, kontrolni, precizni, medicinski i hirur-ški instrumenti i aparati; njihovi djelovi i pribor	26.6	2.3	8.8	1.4	3.3	236.0	Optical, photographic, cinematograph- hic, measuring, checking, precision, me-dical or surgical instruments and apparatus; parts and accessories ther.
Časovnici i njihovi djelovi	0.4	0.8	195.4	24.2	26.3	109.0	Clocks and watches and parts thereof
Muzički instrumenti, djelovi i pribor ovih proizvoda	0.0	0.2	973.5	0.8	2.2	271.9	Musical instruments; parts and accessories of such articles
Oružje i municija; njihovi djelovi i pribor	0.0	0.1	9062.7	0.1	0.5	401.1	Arms and ammunition; parts and accessories thereof
Namještaj, posteljina, madraci, nosači madraca, jastuci i slični punjeni proizvodi; lampe i druga svijetleća tijela, na drugom mjestu nepomenuti ili uključeni; osvijetljeni znaci, osvijetljene pločica imenima i slično, montažne zgrade	3.8	5.4	142.2	0.2	0.6	324.4	Furniture; bedding, mattresses, mattress supports, cushions and similar stuffed furnishings; lamps and lighting fittings, not elsewhere specified or included; illuminated signs, illuminated name- plates and the like; prefabricated build.
Iračke, rekviziti za društvene igre i sport; njihovi djelovi i pribor	1.0	1.5	159.9	46.2	75.2	162.8	Toys, games and sports requisites; parts and accessories thereof
Razni proizvodi	0.3	0.2	76.5	5.9	9.2	156.4	Miscellaneous manufactured articles
Predmeti umjetnosti, kolekcija i starina	0.1	0.1	170.5	14.0	3.9	27.7	Works of art, collectors' pieces and ant.
Nerazvrstani	0.5	0.1	25.4	1.1	0.2	16.3	Other

UNUTRAŠNJA TRGOVINA / DOMESTIC TRADE

Promet u trgovini na malo / Turnover in retail trade Ø 2007 = 100



PROMET U TRGOVINI NA MALO / TURNOVER IN RETAIL TRADE

Ø 2007 = 100

	Indeks ¹⁾ / Index	PROMET u hilj. EUR / Turnover in thous. EUR
2006	71	544335
2007	100	765890
2007		
I	57.7	36820
II	60.3	38522
III	78.1	49846
IV	89.8	57335
V	95.0	60642
VI	103.5	66080
VII	127.5	81364
VIII	129.8	82828
IX	109.6	69961
X	117.0	74565
XI	105.7	67504
XII	126.0	80705
2008		
I ²⁾	78.1	49826

¹⁾ Indeks prometa po tekućim cijenama.²⁾ Prethodni podaci /¹⁾ Index of turnover at current prices.²⁾ Preliminary data

PROMET U TRGOVINI NA MALO / TURNOVER IN RETAIL TRADE							
PROMET u hilj. EUR Turnover in thous. EUR 2008	tekući mjesec na prethodni Current month compared to the previous month		mjesec 2008. na isti mjesec 2007. Month in 2008 compared to the same month 2007		mjesec 2008. na Ø 2007 Month in 2008 to Ø 2007		
	indeks prometa u tekućim cijenama Index of turnover at current prices	indeks prometa u stalnim cijenama Index of turnover at constant prices	indeks prometa u tekućim cijenama Index of turnover at current prices	indeks prometa u stalnim cijenama Index of turnover at constant prices	indeks prometa u tekućim cijenama Index of turnover at current prices	indeks prometa u stalnim cijenama Index of turnover at constant prices	
2008 I	49826	62.0	61.7	135.3	130.7	78.1	76.4

PRODAJA I OTKUP PROIZVODA POLJOPRIVREDE, ŠUMARSTVA I RIBARSTVA
SALE AND BUYING OUT OF PRODUCTS FROM AGRICULTURE, FORESTRY AND FISHERY

U hiljadama EUR

In thousands EUR

	Indeks <i>Index</i> Ø 2007 =100	Ukupna vrijednost <i>Total value</i>	Poljoprivreda i šumarstvo / <i>Agriculture and forestry</i>				
			žita <i>Cereals</i>	industrijsko bilje <i>Industrial crops</i>	povrće ¹⁾ <i>Vegetables</i>	voće <i>Fruit</i>	grožđe <i>Vine</i>
2003	77.0	12729	4	1303	751	1307	2432
2004	76.5	12641	13	809	245	1429	1392
2005	94.9	15689	2	1032	146	1128	1480
2006	93.3	15422	11	-	142	1127	1208
2007	100.0	16523	-	831	284	1000	1778
2007							
I	98.5	1357	-	587	30	-	-
II	47.4	653	-	-	-	-	-
III	60.4	832	-	-	17	-	-
IV	60.4	832	-	-	4	-	-
V	62.8	864	-	-	1	-	-
VI	97.8	1347	-	-	41	450	-
VII	186.1	2562	-	-	107	257	1256
VIII	165.4	2277	-	-	1	259	522
IX	98.3	1353	-	-	18	1	-
X	106.2	1462	-	-	21	22	-
XI	95.8	1319	-	-	22	9	-
XII	120.9	1665	-	244	22	2	-
2008							
I	49.6	673	-	-	20	1	-
I 2008 / I 2007	49.6	49.6	-	-	66.7	-	-

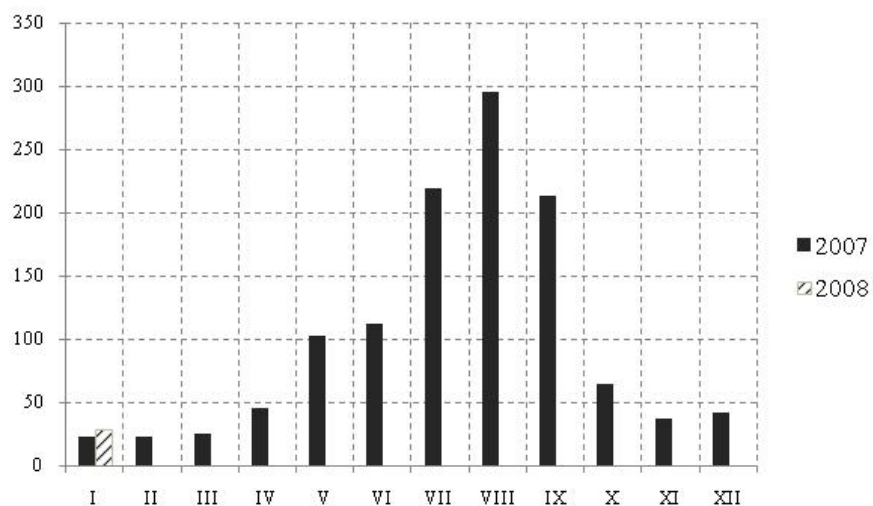
/ nastavak /

/ continued /

	Poljoprivreda i šumarstvo / <i>Agriculture and forestry</i>						Ribarstvo <i>Fishery</i>
	preradevine voća i grožđa <i>Products of fruit and vine</i>	Stoka <i>Livestock</i>	živina i jaja <i>Poultry and eggs</i>	mlijeko i mliječni proizvodi <i>Milk and milk products</i>	koža i vuna <i>Leather and wool</i>	ostali proizvodi <i>Other products</i>	riba svježa <i>Fresh fish</i>
2003	223	319	1190	3724	37	1096	343
2004	76	2723	1192	3767	10	638	347
2005	67	4762	814	4762	8	1173	315
2006	100	5437	732	5379	-	969	317
2007	171	5912	800	4640	-	810	297
2007							
I	-	255	53	414	-	-	18
II	-	268	51	321	-	-	13
III	1	283	71	336	-	100	24
IV	1	302	56	376	-	60	33
V	36	317	54	411	-	25	20
VI	13	342	66	415	-	2	18
VII	44	367	83	428	-	-	20
VIII	-	388	88	388	-	600	31
IX	-	823	93	366	-	15	37
X	44	866	92	385	-	7	25
XI	-	816	50	395	-	-	27
XII	32	885	43	405	-	1	31
2008							
I	-	227	51	360	-	-	14
I 2008 / I 2007	-	89.0	96.2	86.9	-	-	77.8

¹⁾ Uključeni i krompir i pasulj.¹⁾ includes potatoes and beans.

UGOSTITELJSTVO / CATERING



PROMET U UGOSTITELJSTVU / TURNOVER IN CATERING

Ø 2007 = 100

	Indeks ¹⁾ <i>Index</i>	Promet u hilj. EUR <i>Turnover in thousands EUR</i>
2003	44.4	60485
2004	43.6	59383
2005	48.1	65552
2006	94.6	128720
2007	100	136039
2007		
I	22.4	2547
II	22.2	2520
III	24.6	2798
IV	44.7	5078
V	101.8	11552
VI	112.2	12726
VII	219.6	24903
VIII	295.2	33478
IX	212.6	24106
X	64.1	7270
XI	37.2	4276
XII	42.2	4785
2008		
I	27.7	3150

Indeks prometa po tekućim cijenama.

Index of turnover at current prices.

TURIZAM / TOURISM**Dolasci i noćenja turista po zemljama i prema vrsti mjesta*****Tourist arrivals and tourist overnight stays by country and type of resort***

	2006	2007	Januar <i>January</i>		2008	
			2006	2007	I	
Dolasci turista						<i>Tourist arrivals</i>
Ukupno	953928	1133432	11988	17168	19995	<i>Total</i>
Domaći ¹⁾	576130	149294	8129	7298	8104	<i>Domestic</i>
Strani	377798	984138	3859	987	11891	<i>Foreigners</i>
Noćenja turista – ukupno	5936270	7294530	48047	74626	97953	<i>Tourist overnight stays – total</i>
Noćenja domaćih turista ¹⁾	3740179	851045	35040	41475	41598	<i>Overnight stays of domestic tourists ¹⁾</i>
Noćenja stranih turista	2196091	6443485	13007	33151	56355	<i>Overnight stays of foreigners</i>
Albanija	99621	188572	2212	5491	55459	<i>Albania</i>
Austrija	18536	97273	168	234	4045	<i>Austria</i>
Belgija	39196	44139	74	65	316	<i>Belgium</i>
Bosna i Hercegovina	336618	703472	1346	3246	10047	<i>Bosnia and Herzegovina</i>
Bugarska	6735	18912	76	92	265	<i>Bulgaria</i>
Češka Republika	222169	266598	41	140	44	<i>Czech Republic</i>
Danska	5006	6964	22	93	54	<i>Danmark</i>
Finska	14698	18259	4	67	57	<i>Finland</i>
Francuska	103828	181384	130	176	322	<i>France</i>
Grčka	3263	5993	56	79	155	<i>Greece</i>
Holandija	25661	41826	143	134	81	<i>Netherlands</i>
Hrvatska	48810	44717	323	885	313	<i>Croatia</i>
Italija	64477	205937	2827	3980	1942	<i>Italy</i>
Mađarska	46565	200675	197	265	177	<i>Hungary</i>
Makedonija	74531	156371	213	198	3920	<i>Macedonia</i>
Norveška	46395	53121	76	109	78	<i>Norway</i>
Njemačka	142538	116807	240	595	500	<i>Germany</i>
Poljska	34608	73332	14	52	136	<i>Poland</i>
Rumunija	8005	8236	84	71	70	<i>Romania</i>
Rusija	455502	789497	3001	4597	7457	<i>Russia</i>
Slovačka	89212	83939	23	42	15	<i>Slovakia</i>
Slovenija	76325	90023	463	482	813	<i>Slovenia</i>
Srbija ¹⁾	-	2644312	-	8586	19678	<i>Serbia ¹⁾</i>
Švajcarska	9680	26193	14	81	199	<i>Switzerland</i>
Švedska	23211	48247	55	93	98	<i>Sweden</i>
Ukrajina	-	65944	-	24	567	<i>Ukraine</i>
Velika Britanija	79008	90543	387	759	1914	<i>Great Britain</i>
Ostale evropske zemlje	71329	109128	293	644	1171	<i>Other European countries</i>
Izrael	9906	8823	52	117	71	<i>Israel</i>
Kanada	5570	5894	15	81	71	<i>Canada</i>
SAD	17679	22005	158	444	351	<i>USA</i>
Ostale vanevropske zemlje	17409	26349	300	1229	403	<i>Other non-European countries</i>
Noćenja po vrstama mjesta – ukupno	5936270	7294530	48047	74626	97953	<i>Overnight stays by type of tourist resorts – total</i>
Glavni administrativni centar	74169	104986	6731	13745	15436	<i>Main administrative center</i>
Primorska	5691770	6961444	24137	35686	54407	<i>Coastal</i>
Planinska	68424	105892	11840	15061	20200	<i>Mountain</i>
Ostala turistička mjesta	101677	121871	5330	10125	7903	<i>Other tourist resorts</i>
Ostala mjesta	230	337	9	9	7	<i>Other places</i>
Primorska mjesta						<i>Coastal resorts</i>
Bar	721774	923729	2023	1710	14754	<i>Bar</i>
Budva	2319339	2990529	6338	10515	14628	<i>Budva</i>
Kotor	347023	378656	2720	2960	2386	<i>Kotor</i>
Tivat	209301	264369	2729	2920	3138	<i>Tivat</i>
Ulcinj	588280	712798	3611	4585	3472	<i>Ulcinj</i>
Herceg Novi	1506053	1691363	6716	12996	16029	<i>Herceg Novi</i>

U 2006.godini Srbija ulazi u domaće dolaske i noćenja, a u 2007. godini svrstana je u strane zemlje.

In 2006, Serbia were counted in domestic arrivals and overnight stays, and since 2007 it is considered as a foreign country.

DOLASCI I NOĆENJA GOSTIJU PO VRSTAMA TURISTIČKIH MJESTA
TOURIST ARRIVALS AND TOURIST OVERNIGHT STAYS BY TYPE OF PLACE

	Dolasci / Arrivals					Noćenja / Nights				
	sjedište republike <i>Main administrative centre</i>	primorska mjesto <i>Coastal resorts</i>	planinska mjesto <i>Mountain resorts</i>	ostala turistička mjesto <i>Other tourist resorts</i>	ostala mjesto <i>Other places</i>	sjedište republike <i>Main administrative centre</i>	primorska mjesto <i>Coastal resorts</i>	planinska mjesto <i>Mountain resorts</i>	ostala turistička mjesto <i>Other tourist resorts</i>	ostala mjesto <i>Other places</i>
2003	21851	541728	18314	17395	142	41680	3810643	60437	63225	281
2004	24580	639980	18529	20285	110	44750	4396888	54583	64763	110
2005	29819	747734	19185	23599	120	53886	5022260	53577	82003	121
2006	39295	859904	26362	28144	223	74169	5691770	68424	101677	230
2007	45588	101074	39158	37642	302	104986	6961444	105892	121871	337
		2								
2007										
I	3260	8423	3548	1928	9	13745	35686	15061	10125	9
II	2619	9727	1547	1853	10	4925	43393	3673	8871	22
III	3778	11544	1694	2392	17	7284	45216	3075	9197	21
IV	3868	26239	1674	2928	25	7069	121814	2961	12434	28
V	3845	54083	3146	4084	24	7502	271386	7526	13144	26
VI	3826	97218	4652	3642	42	8605	635561	11285	11637	52
VII	4107	304581	6344	5068	47	10347	2096810	19450	15990	47
VIII	4097	335743	7164	4856	43	13090	2650066	22423	13440	43
IX	3963	121585	3744	3645	44	8129	856865	8357	9689	44
X	4211	24082	2069	2925	16	8397	122459	4262	7202	16
XI	4056	8316	1354	1882	9	8208	40884	2863	4922	9
XII	3958	9201	2222	2439	16	7685	41304	4956	5220	20
2008										
I	3351	9404	5119	2114	7	15436	54407	20200	7903	7
I 2008 / I 2007	103	112	144	110	78	112	152	134	78	78

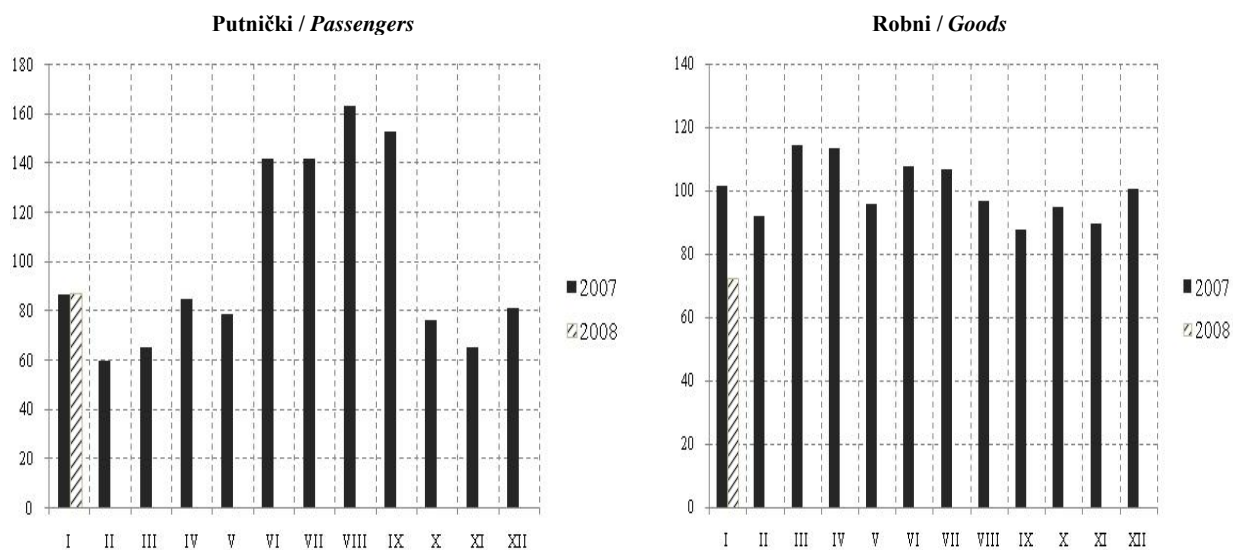
BROJ DOLAZAKA I NOĆENJA TURISTA
TOURIST ARRIVALS AND TOURIST OVERNIGHT STAYS

	Dolasci / Arrivals			Noćenja / Nights		
	ukupno / Total	domaći / Domestic	strani / Foreign	ukupno / Total	domaći / Domestic	strani / Foreign
2003	599430	457643	141787	3976266	3060528	915738
2004	703484	515424	188060	4561094	3337247	1223847
2005	820457	548452	272005	5211847	3628337	1583510
2006	953928	576130	377798	5936270	3740179	2196091
2007	1133432	149294	984138	7294530	851045	6443485
2007						
I	17168	7298	9870	74626	41475	33151
II	15756	5794	9962	60884	25220	35664
III	19425	5424	14001	64793	20542	44251
IV	34734	6935	27799	144306	33034	111272
V	65182	13606	51576	299584	63138	236446
VI	109380	13216	96164	667140	72877	594263
VII	320147	32645	287502	2142644	197955	1944689
VIII	351903	33345	318558	2699062	250752	2448310
IX	132981	15165	117816	883084	90630	792454
X	33303	6218	27085	142336	29227	113109
XI	15617	3845	11772	56886	11511	45375
XII	17836	5803	12033	59185	14684	44501
2008						
I	19995	8104	11891	97953	41598	56355
I 2008 / I 2007	116.5	111.0	120.5	131.2	100.3	170.0

SAOBRAĆAJ, SKLADIŠTENJE I VEZE
TRANSPORT, STORAGE AND COMMUNICATIONS

Željeznički saobraćaj / Railway transport

Ø 2007 = 100

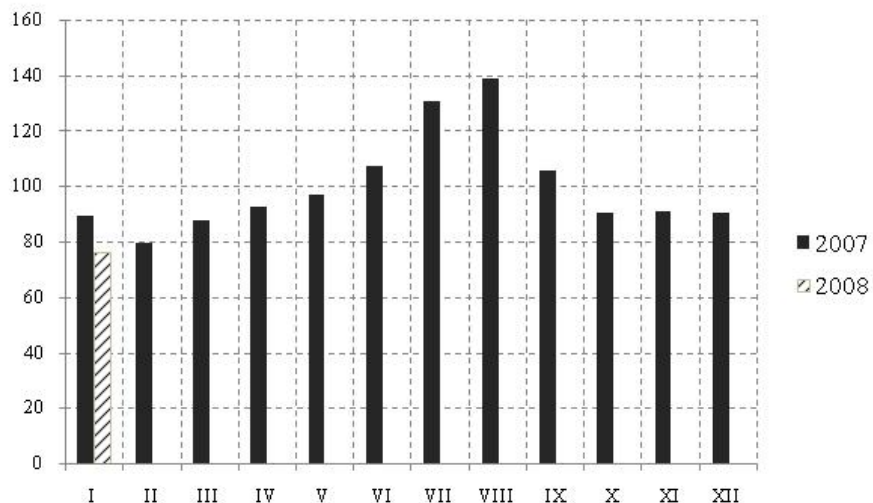


	ŽELJEZNIČKI SAOBRAĆAJ / RAILWAY TRANSPORT					
	Putnički / Passenger			Robni / Goods		
	indeks <i>Index</i>	putnici u 000 <i>Passengers, thousands</i>	putnički km u 000 <i>Passenger kilometres in thousands</i>	Indeks <i>Index</i>	prevoz robe u 000 t <i>Goods in thousands tonnes</i>	tonski km u 000 <i>Tonne-kilometres in thousands</i>
2003	163.7	1467	191717	28.5	718	55167
2004	119.5	1066	129600	39.4	1006	92502
2005	126.7	1137	122920	46.3	1182	132782
2006	119.5	1067	131500	98.5	2494	182163
2007	100	999	110000	100	1761	184957
2007						
I	87.2	84	8000	101.6	135	15717
II	59.7	50	5500	91.7	134	14073
III	65.7	60	6000	114.4	158	17573
IV	84.8	65	7800	113.4	159	17506
V	78.8	80	7200	95.6	151	14750
VI	142.1	110	13000	107.5	142	16588
VII	142.1	110	13000	106.5	152	16471
VIII	163.6	150	15000	96.6	142	14827
IX	152.8	100	14000	87.8	133	13553
X	76.4	80	7000	94.7	150	14543
XI	65.7	50	6000	89.7	145	13800
XII	81.2	60	7500	100.6	160	15556
2008						
I	76.3	60	7000	73.7	120	11370

SAOBRAĆAJ, SKLADIŠTENJE I VEZE
TRANSPORT, STORAGE AND COMMUNICATIONS

Drumski saobraćaj - Putnički / Road transport - passengers

Ø 2007 = 100

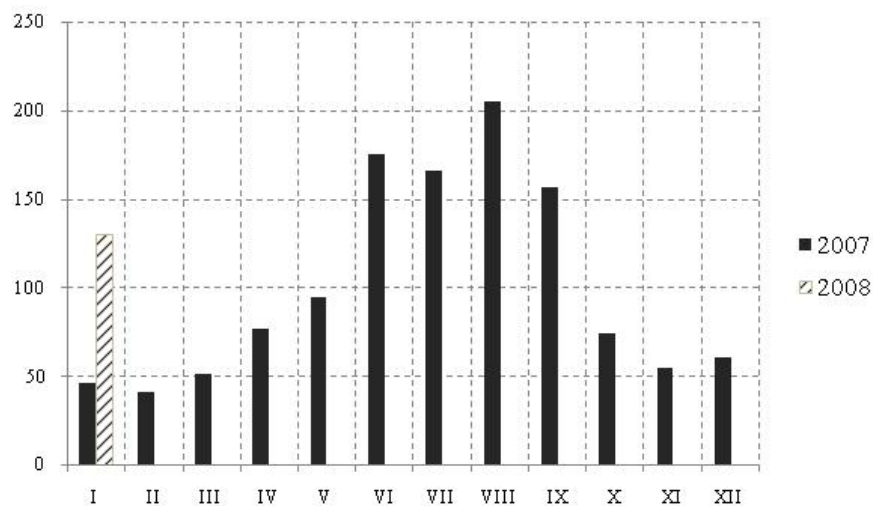


	DRUMSKI SAOBRAĆAJ / ROAD TRANSPORT							
	PUTNIČKI / PASSENGERS				ROBNI / GOODS			
	indeks Index	putnici u 000 Passengers, thous.	putnički km u 000 Passenger kilometres in thous.	autobuski km u 000 Bus kilometres in thous	indeks Index	roba u 000 tona Goods in thousands tonnes	tonski km u 000 Tonne- kilometres in thous.	kamionski km u 000 Truck kilometres in thous.
2003	83.6	4600	98911	11667	75.2	1871	70515	10336
2004	85.2	4488	100620	11472	65.7	1639	64508	9332
2005	80.4	4302	84883	9593	74.4	1857	61100	9365
2006	81.2	4825	114695	16809	79.2	1961	72724	15167
2007	100	5738	141247	17630	100	2131	91786	16269
2007								
I	89.4	379	10543	1275	83.1	138	6303	1068
II	79.6	364	9380	1223	91.1	163	6938	1290
III	87.7	383	10354	1255	101.5	189	7699	1395
IV	92.6	404	10942	1409	96.7	208	7336	1371
V	96.7	393	11371	1416	96.7	159	7346	1391
VI	107.2	512	12626	1626	91.1	112	6907	1325
VII	130.8	633	15391	1837	104.7	130	7969	1392
VIII	138.9	647	16317	1849	105.5	172	7992	1357
IX	105.6	583	12398	1651	113.4	239	8597	1433
X	90.2	435	10619	1500	101.5	231	7720	1444
XI	91.0	471	10717	1351	107.9	181	8206	1316
XII	90.2	530	10589	1238	107.1	207	8126	1413
2008								
I	76.1	354	8953	1156	130.6	174	9992	1063

SAOBRAĆAJ, SKLADIŠTENJE I VEZE
TRANSPORT, STORAGE AND COMMUNICATIONS

Ø 2007 = 100

Vazdušni saobraćaj - putnički / Air transport - passengers



	GRADSKI SAOBRAĆAJ LOCAL TRANSPORT		VAZDUŠNI SAOBRAĆAJ, PROMET NA AERODROMIMA AIR TRANSPORT, TRAFFIC AT AIRPORTS		
	indeks Index	prevezeno putnika u 000 Passengers in thousands	PUTNIČKI / PASSENGERS		ROBNI / GOODS
			indeks Index	prevoz putnika Transport of passengers	prevoz robe u tonama Transport of goods in tonnes
2003	237.9	3548	58.6	602942	618
2004	179.2	2673	65.1	664801	647
2005	146.2	2177	68.4	697740	1011
2006	106.7	1591	81.4	833715	1067
2007	100	1491	100	1024491	1320
2007					
I	46.1	58	45.6	38922	49
II	135.1	168	40.7	35097	148
III	130.8	162	51.3	44065	68
IV	130.8	162	76.6	65439	99
V	134.0	166	94.5	80689	87
VI	124.4	155	175.2	150003	81
VII	65.4	81	165.4	140797	78
VIII	64.3	80	205.3	174921	306
IX	64.3	80	156.4	133175	76
X	89.0	111	74.1	63306	83
XI	110.5	137	54.6	46684	134
XII	105.1	131	60.3	51393	107
2008					
I	60.4	75	55.2	47161	133

SAOBRAĆAJ, SKLADIŠTENJE I VEZE
TRANSPORT, STORAGE AND COMMUNICATIONS

POMORSKI SAOBRAĆAJ / MARINE TRANSPORT

	Prevoz robe / Transport of goods			Promet u lukama (u tonama) / Turnover in harbours (tonnes)				
	Indeks Index	u 000 t In thous. tonnes	tonske milje u mil. Tonne milles in millions	Indeks Index	ukupno Total	unutrašnji promet Internal turnover	izvoz ¹⁾ Export	uvoz ²⁾ Import
2003	86.2	70	352	96.2	1993111	16926	1024440	951623
2004	65.4	57	267	83.8	1735891	1786	961858	768847
2005	56.8	60	232	98.4	2039211	442	1166959	851211
2006	93.1	818	380	95.9	1988204	116	1027208	941905
2007	100.0	785	408	100	2071310	1825	791509	1280327
2007								
I	58.7	77	20	55.7	96251	-	82184	14067
II	70.5	79	24	103.0	177913	-	66836	111077
III	67.6	91	23	118.8	205082	-	87826	116977
IV	52.9	61	18	93.6	161627	-	64863	96764
V	70.5	63	24	99.6	172053	-	45339	121344
VI	82.3	71	28	143.4	247638	-	94671	152967
VII	305.8	68	104	88.9	153509	1825	55650	96034
VIII	170.5	46	58	94.8	163661	-	62213	101448
IX	117.6	76	40	121.0	209013	-	51356	157657
X	76.4	67	26	104.6	180663	-	70233	118430
XI	70.5	39	24	82.4	142246	-	47616	94630
XII	58.7	45	20	93.6	161654	-	62722	98932
2008								
I	67.6	78	23	108.6	187624	8350	67759	108570

¹⁾ Tranzit utovar prikazan kod izvoza ²⁾ Tranzit istovar prikazan kod uvoza / ¹⁾ Transit loading presented in export. ²⁾ Transit loading presented in import.

P T T SAOBRAĆAJ / POSTAL, TELEGRAPH AND TELEPHONE (PTT) COMMUNICATIONS

	Poštanske usluge / Postal services		Telegrafske usluge / Telegraph services		Telefonske usluge / Telephone services	
	pisma u 000 komada <i>Letters in thousands pcs.</i>	paketi u 000 komada <i>Packages in thousands pcs.</i>	uputnice u 000 komada <i>Postal orders in thousands pcs.</i>	telegr. u 000 komada <i>Ttelegraphs in thousands pcs.</i>	fiksna telefonija <i>Fixed telephony</i>	mobilna telefonija <i>Mobile telephony</i>
					minuti u 000 <i>Minutes in thous.</i>	minuti u 000 <i>Minutes in thous.</i>
2003	14926	65	64	541	...	-
2004	12994	52	57	539	...	-
2005	16185	56	65	572	876231	-
2006	17396	30	45	581	862596	488802
2007	18291	23	44	589	864471	660168
2007						
I	1196	2	3	49	72061	35920
II	1227	2	5	53	69015	32735
III	1343	2	4	56	74572	56856
IV	1241	2	3	47	69021	46225
V	1245	2	4	43	66791	55114
VI	1642	2	4	48	69936	56608
VII	1925	3	4	47	90574	61557
VIII	1694	1	4	48	113067	58679
IX	1603	1	3	47	75383	50087
X	1590	2	3	50	53973	59897
XI	1604	2	3	51	54717	74333
XII	1982	2	4	50	55361	72157
2008						
I	1694	2	3	47	55433	54300

Podaci za 2003 i 2004. godinu su prikazivani u telefonskim impulsima, a za 2005, 2006. i 2007. godinu u minutima.

Data on telephone services – fixed telephony for 2003 and 2004 were given in telephone impulses and for 2005, 2006 and 2007 in minutes.

MONETARNI AGREGATI (Novčana masa)
MONETARY AGGREGATES (MONEY SUPPLY)

u hilj. EUR, stanje na kraju perioda

balance at end-periods, EUR thous.

	M0	Depoziti po videnju ¹⁾ <i>Demand deposits¹⁾</i>	M1	Depoziti po videnju ²⁾ <i>Demand deposits²⁾</i>	M11	Oročeni Depoziti ¹⁾ <i>Time deposits¹⁾</i>	M2	Oročeni depoziti ²⁾ <i>Time deposits²⁾</i>	M21
	1	2	3 (1+2)	4	5 (1+4)	6	7 (3+6)	8	9 (5+8)
2004	290.935	139.722	430.657	146.179	437.114	104.891	535.548	109.411	546.525
2005 ³⁾	351.276	244.991	596.267	263.445	614.721	205.989	802.256	252.573	867.294
2006 ³⁾	483.889	594.884	1.078.773	614.641	1.098.530	428.293	1.507.066	488.124	1.586.654
2007 ⁴⁾	592.457	941.689	1.534.146	963.346	1.555.803	1.070.459	2.604.605	1.170.747	2.726.550
I	460.381	574.805	1.035.186	607.582	1.067.963	479.842	1.515.028	543.687	1.611.650
II	470.218	622.105	1.092.323	652.371	1.122.589	522.154	1.614.477	596.118	1.718.707
III	483.071	682.611	1.165.682	717.098	1.200.169	555.668	1.721.350	634.127	1.834.296
IV	493.979	739.069	1.233.048	769.015	1.262.994	582.165	1.815.213	686.664	1.949.658
V	502.170	785.389	1.287.559	814.484	1.316.654	640.165	1.927.724	767.031	2.083.685
VI	516.661	808.057	1.324.718	841.356	1.358.017	703.987	2.028.705	836.014	2.194.031
VII	529.079	830.295	1.359.374	861.123	1.390.202	808.200	2.167.574	955.683	2.345.885
VIII	543.521	918.450	1.461.971	948.317	1.491.838	829.520	2.291.491	1.018.040	2.509.878
IX	542.174	862.242	1.404.416	894.084	1.436.258	878.884	2.283.300	1.063.918	2.500.176
X	540.541	883.733	1.424.274	911.800	1.452.341	947.723	2.371.997	1.158.660	2.611.001
XI	538.957	883.659	1.422.616	913.805	1.452.762	969.542	2.392.158	1.180.795	2.633.892
XII ⁴⁾	592.457	941.689	1.534.146	963.346	1.555.803	1.070.459	2.604.605	1.170.747	2.726.550
2008									
I

IZVOR: Centralna banka Crne Gore

¹⁾ Bez depozita Vlade Crne Gore²⁾ Uključujući depozite Vlade Crne Gore³⁾ Stanje na 31. XII⁴⁾ Predhodni podaci, stanje 31.XII

December

SOURCE: Central bank of Montenegro

¹⁾ Without Government deposits²⁾ Including Government deposits³⁾ Balance as at 31 December⁴⁾ Preliminary data, balance as at 31

DEPOZITI STANOVNIŠTVA / DEPOSITS BY HOUSEHOLDS

u mil. EUR, stanje na kraju perioda

balance at end-periods, EUR mill..

	Depoziti po videnju <i>Demand deposits</i>	Oročeni depoziti / Time deposits					Ukupno <i>Total</i>
		do 3 mjeseca <i>Up to 3 months</i>	od 3 mjeseca do godinu dana <i>From 3 months to 1 years</i>	od 1 do 3 godine <i>From 1 to 3 years</i>	preko 3 godine <i>Over 3 years</i>	ukupno <i>Total</i>	
2004	40,1	5,1	29,7	4,4	0,1	39,2	79,3
2005 ¹⁾	93,5	7,6	55,0	19,4	0,3	82,2	175,7
2006 ¹⁾	294,4	25,8	114,1	64,8	0,3	205,0	499,4
2007 ²⁾	464,6	145,6	278,4	111,5	17,8	553,3	1.017,9
I	299,9	31,1	188,5	4,6	0,4	224,6	524,5
II	333,4	31,2	190,5	14,8	0,4	236,9	570,3
III	367,7	32,1	210,3	9,9	0,5	252,8	620,5
IV	415,9	33,5	176,5	56,9	0,4	267,3	683,3
V	427,3	38,9	181,0	71,5	0,4	291,9	719,2
VI	438,6	49,9	181,3	96,2	0,5	328,1	766,7
VII	475,3	53,1	216,9	118,3	0,4	388,8	864,2
VIII	493,0	84,5	237,0	90,0	0,4	411,9	905,0
IX	479,5	55,0	299,0	89,1	0,5	443,7	923,2
X	474,8	130,9	236,9	109,6	4,6	482,2	957,0
XI	457,1	136,9	248,7	120,5	7,7	513,8	970,9
XII ⁴⁾	464,6	145,6	278,4	111,5	17,8	553,3	1017,9
2008							
I

IZVOR: Centralna banka Crne Gore

¹⁾ Stanje na 31.XII²⁾ Predhodni podaci, stanje 31.XII

SOURCE: Central Bank of Montenegro

¹⁾ Balance on 31 December²⁾ Preliminary data, balance on 31 December

PLATNI BILANS CRNE GORE ¹⁾ u hilj.EUR / *BALANCE OF PAYMENTS OF MONTENEGRO* ¹⁾ EUR thous

Kvartali Quarters	A Ukupno Total	TEKUĆI RAČUN / <i>Current account</i>							
		1 (1.1 - 1.2) Roba / <i>Goods</i>		2 (2.1 - 2.2) Usluge / <i>Services</i>		3 (3.1 - 3.2) Dohoci / <i>Income</i>		4 (4.1 - 4.2) Tekući transferi <i>Current transfers</i>	
		izvoz <i>Export</i>	uvoz <i>Import</i>	prihodi <i>Revenues</i>	rashodi <i>Expenditures</i>	prihodi <i>Revenues</i>	rashodi <i>Expenditures</i>	prihodi <i>Revenues</i>	rashodi <i>Expenditures</i>
	(1+2+3+4)	1.1	1.2	2.1	2.2	3.1	3.2	4.1	4.2
2004	-119.642	452.148	868.584	249.529	101.353	135.455	49.213	73.493	11.117
I	-74.484	102.005	205.458	16.660	21.431	26.198	11.361	21.538	2.635
II	-17.524	121.338	187.584	45.041	25.361	29.470	15.393	17.412	2.446
III	80.573	115.805	211.330	159.848	27.206	36.020	6.447	16.886	3.003
IV	-108.207	113.000	264.212	27.980	27.355	43.768	16.012	17.657	3.033
2005	-154.045	460.648	974.301	329.765	134.225	62.291	44.779	163.455	16.899
I	-71.414	118.824	222.636	23.199	24.972	10.939	4.899	31.350	3.219
II	-85.439	117.387	263.087	56.644	33.997	17.929	17.481	42.642	5.476
III	93.796	115.904	250.550	214.470	38.308	18.505	4.423	41.874	3.676
IV	-90.988	108.533	238.028	35.452	36.948	14.918	17.976	47.589	4.528
2006	-511.902	648.327	1.497.651	433.550	217.147	65.334	34.534	108.555	18.336
I	-135.711	110.753	267.505	33.714	46.724	7.921	6.809	36.231	3.290
II	-189.079	169.946	404.970	74.169	57.663	17.544	9.370	24.031	2.766
III	6.957	188.023	414.686	265.354	61.786	18.958	7.214	23.106	4.797
IV	-194.070	179.604	410.489	60.314	50.974	20.910	11.141	25.187	7.482
2007									
I	-242.575	147.611	414.817	49.268	45.215	20.148	12.905	23.281	9.946
II	-315.992	156.858	557.084	119.309	52.662	21.312	16.412	24.731	12.043
III	47.454	181.616	519.795	425.768	57.774	22.733	19.246	22.189	8.036
IV									

/nastavak /

/ continued /

Nastavak /	KAPITALNI I FINANSIJSKI RAČUN / CAPITAL AND FINANCIAL ACCOUNT							Neto greške i omaške /
Kvartali Quarters	B Ukupno Total	račun kapitala Capital account	2 (2.1+2.2+2.3+2.4+2.5)					Neto greške i omaške Net errors and omissions
			Finansijski račun / Financial account					
			direktne investicije-neto Direct investments - net	portfolio investicije-neto Portfolio investments - net	ostale investicije-neto Other investments - net	promjene neto strane aktive kom. b. Change in Net Foreign Assets	promjena rezervi CBCG Change in CBM reserves	
	(1+2)	1	2.1	2.2	2.3	2.4	2.5	(A+B)
2004	58.858	0	50.567	5.524	-19.446	31.820	-9.607	-60.784
I	45.030	0	9.343	149	16.347	19.793	-602	-29.454
II	39.347	0	21.467	607	1.625	21.629	-5.981	21.823
III	-116.834	0	5.575	1.222	-89.924	-22.481	-11.226	-36.261
IV	91.315	0	14.182	3.546	52.506	12.879	8.202	-16.892
2005	191.881	0	381.213	4.815	-20.390	-60.900	-112.857	37.836
I	59.530	0	169.624	4.972	-987	3.497	-117.576	-11.884
II	90.212	0	58.697	726	26.884	-18.639	22.544	4.773
III	-114.627	0	35.040	-149	-119.326	-31.545	1.353	-20.831
IV	156.766	0	117.852	-734	73.039	-14.213	-19.178	65.778
2006	521.560	-14.028	466.701	-4.444	137.001	73.379	-137.048	9.658
I	148.942	-9.648	60.162	60	44.837	21.165	32.367	13.232
II	166.702	-3.540	99.771	3.618	50.332	51.748	-35.227	-22.377
III	-78.704	441	83.318	2.888	-71.803	-34.660	-58.888	-71.747
IV	284.620	-1.281	223.449	-11.010	113.636	35.126	-75.300	90.550
2007								
I	259.391	-642	131.847	8.231	86.998	66.584	-33.626	16.817
II	308.878	-734	160.055	-5.307	165.877	76.711	-87.725	-7.114
III	-45.722	39	45.663	6.713	-103.059	90.730	-85.808	1.732
IV								

¹⁾ IZVOR: Centralna banka Crne Gore¹⁾ SOURCE: Central Bank of Montenegro

METODOLOŠKA OBJAŠNENJA**STANOVNIŠTVO**

Izvori podataka – Podaci o rođenim, umrlim i zaključenim brakovima prikupljaju se od matičara, a podaci o razvedenim brakovima od sudova nadležnih za razvod braka.

Podaci o unutrašnjim migracijama prikupljaju se od Ministarstva unutrašnjih poslova i javne uprave.

Obuhvatnost i definicije – Podaci o prirodnom kretanju stanovništva obuhvataju broj rođenih, umrlih i vjenčanih, koji je registrovan u matičnoj službi, dok se broj razvedenih brakova prikupljaju od strane nadležnih sudova. Jedinica posmatranja su pojedinačni događaji preseljenja (doseljenja i odseljenja) unutar granica Crne Gore.

Metodološki materijal – Detaljna objašnjenja o metodologiji primjenjenoj u vitalnoj statistici nalaze se u Uputstvu za matičare o popunjavanju statističkih listića (o rođenju, slučaju smrti i vjenčanju) i u Uputstvu za sudije o popunjavanju statističkih listića o razvedenom braku.

ZAPOSLENOST I ZARADE**Zaposlenost**

Podaci o godišnjem prosjeku zaposlenih izračunati su na osnovu dva stanja (31.marta i 30.septembar), a dobijeni su redovnim polugodišnjim izvještajem o zaposlenim i zaradama zaposlenih (RAD – IP) kao i na osnovu podataka koji su regulisani Zakonom o evidencijama u oblasti rada i zapošljavanja ("Sl.list RCG", br.69/03), a vode ih Fondovi Penzijsko invalidskog osiguranja i Zdravstva, koje Zavod za statistiku redovno preuzima od istih.

Podaci o mjesečnom broju zaposlenih dobijeni su na osnovu redovnog mjesečnog istraživanja o zaposlenima i zaradama zaposlenih (Rad – 1, koje se vrši na bazi uzorka i prijava – odjava osiguranika koje vode Republički Fond Penzijsko invalidskog osiguranja i Fond Zdravstva.

Obuhvatnost

Polugodišnjim izvještajem o zaposlenima i zaradama zaposlenih (RAD – IP) obuhvaćena su preduzeća, ustanove i organizacije svih oblika svojine. Ovim istraživanjem nijesu obuhvaćeni strani državljani zaposleni u našoj zemlji. Ne smatraju se zaposlenima lica koja rade po ugovoru o djelu ili po ugovoru o obavljanju privremenih i povremenih poslova.

Podaci o nezaposlenim licima obuhvataju sva lica koja su kod Zavoda za zapošljavanje registrovana kao nezaposlena.

Definicije

Pod pojmom zaposleni podrazumijevaju se sva lica koja imaju zasnovan radni odnos sa preduzećem, ustanovom ili organizacijom ili individualnim poslodavcem bez obzira da li su radni odnos zasnovali na neodređeno ili određeno vrijeme i da li rade puno ili kraće od punog radnog vremena.

METHODOLOGICAL EXPLANATIONS**POPULATION**

Data sources – Data on births, deaths and marriages are collected from Registry Offices and data on divorces from the courts of respective jurisdiction.

Data on internal migrations are collected from the Ministry of Internal Affairs and Public Administration.

Coverage and definitions – Data on population changes include the number of births, deaths and marriages, registered by Registry Offices, while the number of divorces is collected by the courts of respective jurisdiction. Observation units are individual occurrences of migrations (moving in and out) within the borders of Montenegro.

Methodological material – Detailed explanation on methodology applied in vital statistics can be found in the Instructions for the filling and submitting of statistical questionnaires (on births, deaths and marriages) as well as in the Instructions for judges for the filing of statistical questionnaires on divorces.

EMPLOYMENT AND EARNINGS**Employment**

The data on annual average of employees are calculated on the basis of two reports (31 March and 30 September) and they are obtained from the regular semiannual report on employees and their earnings (RAD-IP), as well as on the basis of data regulated by the Law on Records in Labor and Employment ("Official Gazette of Republic of Montenegro", No. 69/03), and managed by the Fund for Pension and Disability Insurance and Health Fund.

The data on monthly number of employees are obtained by regular monthly survey of employees and their earnings (RAD-1), conducted on the basis of sample, and registration / withdrawal of beneficiaries in Republic Health Fund and Fund for Pension and Disability Insurance.

Coverage

The Semiannual Report on employees and their earnings (RAD-1) includes enterprises, institutions and organizations of all types of ownership. This survey does not include foreign citizens employed in our country. The persons that work pursuant to a job contract or a contract on casual engagement are not considered as employed. Data about unemployed persons include all persons which are registered as unemployed in the Employment Agency.

Definitions

The term "employees" refers to all persons being employed in enterprises, institutions, organizations or by self-employed individuals no matter whether their employment status is based on a permanent or temporary contract and whether they work on a full-time or part-time basis.

Nezaposleni Definicije

Podaci o broju nezaposlenih lica preuzeti su od Zavoda za zapošljavanje i obuhvataju samo lica koja su registrovana kod ove službe.

U grupi „lica koja traže zaposlenje“ obuhvaćena su lica shodno članu 4 Zakona o zapošljavanju, stav prvi: „nezaposlenim licem, u smislu ovoga Zakona, smatra se lice od 15-65.godina života koje se nalazi na evidenciji Zavoda za zapošljavanje Crne Gore (u daljem tekstu: Zavod) i aktivno traži zapošljavanje, kao i strani državljanin ili lice bez državljanstva, koji ima odobrenje za stalno nastanjenje i odobrenje za zasnivanje radnog odnosa u Crnoj Gori”.

U grupi „lica koja primaju novčanu naknadu“ obuhvaćena su lica koja shodno članu 48 Zakona o zapošljavanju Crne Gore, stav prvi: „pravo na novčanu naknadu ostvaruje osiguranik kojem je u smislu Zakona o radu prestao radni odnos bez njegovog zahtjeva, saglasnosti ili krivice, a koji je bio u radnom odnosu kod jednog ili više poslodavaca sa punim radnim vremenom najmanje 9 mjeseci neprekidno ili 12 mjeseci sa prekidima u posljednjih 18 mjeseci (u daljem tekstu: staž osiguranja), ako se prijavi Zavodu u roku od 30 dana od dana prestanka radnog odnosa”.

U grupi „nezaposlene osobe” koje su se tokom izvještajnog mjeseca prijavile na evidenciju Zavoda za zapošljavanje Crne Gore obuhvataju grupe novoprijavljenih lica”:

- Prvi put, nema zapošljavanja – odnosi se na lica koja su se prvi put prijavila na evidenciju Zavoda, a do tada nijesu bila zapošljavana;
- Prvi put, ima zapošljavanja – lica koja su se prvi put prijavila na evidenciju Zavoda, a do tada nijesu bila zapošljavana;
- Nije prvi put, nema zapošljavanja- lica koja su se više puta prijavljivala na evidenciju Zavoda, a nisu bila zapošljavana;
- Nije prvi put, ima zapošljavanja – lica koja su se više puta prijavljivala na evidenciju Zavoda, a bila su zapošljavana;

U grupi „prestanak vođenja evidencije“ obuhvaćena su lica koja shodno članu 86 Zakona o zapošljavanju, stav prvi: „evidencija o nezaposlenom licu prestaje da se vodi ako:

1. zaključi ugovor o radu sa punim radnim vremenom;
2. se odjavi iz evidencije nezaposlenih lica;
3. odbije uključivanje ili ne izvršava obaveze utvrđene ugovorom o uključivanju u program aktivne politike zapošljavanja;
4. postane vlasnik ili većinski suvlasnik preduzeća;
5. postane preduzetnik;
6. odbije odgovarajuće zaposlenje;
7. nije dalo tačne podatke o ispunjavanju uslova za sticanje statusa nezaposlenog lica;
8. navršši 65 godina života;
9. ostvari pravo na starosnu ili invalidsku penziju;
10. ostane potpuno nesposoban za rad;
11. ode na izdržavanje kazne zatvora u trajanju dužem od šest mjeseci;
12. aktivno ne traži zaposlenje;
13. je radno angažovano suprotno propisima o radnim odnosima („rad na crno”);
14. postane osiguranik – zemljoradnik, u skladu sa Zakonom o penzijskom i invalidskom osiguranju”.

Unemployed Definitions

Data about unemployed persons are taken from the Employment Agency and include only persons registered at the Agency.

The group “persons looking for employment” includes persons defined according to the article 4, par. 1 of the Law on Employment as: “an unemployed person, according to this Law, is a person aged 15-65 which is in the records of the Employment Agency of Montenegro (furthermore: EAM) and is actively looking for employment, as well as a foreigner or a person without citizenship, who has the permission for permanent residence as well as the permission for starting work in Montenegro”.

The group “persons receiving social benefits” includes persons who, according to the article 4, par. 1 of the Law on Employment: “receive the monetary benefit for stopped working without person’s request, compliance or guilt, and who was working for one ore more employers the full working time for at least 9 months without a break or 12 months with breaks in the last 18 months (furthermore: duration of insurance), if he/she reports to the EAM within 30 days of stopping to work.

The group “unemployed persons” who reported themselves to the records of the Employment Agency of Montenegro within the reporting month includes the groups of newly reported persons:

- First time, no employment – refers to persons who are reported for the first time in the records of EAM, and were not previously employed;
- First time, with employment – persons who are reported for the first time in the records of the EAM, and used to be employed;
- Not-first time, no employment – persons who reported to the records of EAM several times, and were not employed;
- Not-first time, no employment persons who reported to the records of EAM several times, and used to be employed;

The group “stopped keeping records” includes persons who, according to the article 86, refer to the par. 1 of the Law on Employment: “records on the unemployed person is stopped to be kept if:

- 1 the person signs contract on work with full working time;
- 2 is signed off from the records of the unemployed persons;
- 3 refuses inclusion or does not perform obligations specified in the agreement on the inclusion in the programme of active employment policy;
- 4 becomes the owner or major co-owner of an enterprise;
- 5 becomes an entrepreneur;
- 6 refuses appropriate employment;
- 7 did not give correct data on meeting conditions for getting the unemployment status;
- 8 is 65 years old;
- 9 gets right to the old-age and survivor pensions;
- 10 is completely incapable to work;
- 11 is serving the imprisonment punishment longer than 6 months;
- 12 is not actively looking for employment;
- 13 is working contrary to the regulations on labour (“unregistered work”);
- 14 becomes insured by agriculture, in compliance with the Law on pension and disability insurance.

ZARADE**Izvori podataka**

Podaci o prosječnim zaradama prikazuju zarade isplaćene u mjesecu i dobijeni su iz redovnog mjesečnog istraživanja Mjesečni izvještaj o zaposlenim i zaradama (obrazac RAD-1).

Obuhvatnost

Istraživanjem su obuhvaćena preduzeća, ustanove, zadruge ili organizacije, svih oblika svojine kao i njihove jedinice u sastavu, po organizaciono teritorijalnom principu, počev od nivoa opštine.

Definicije

Zaradu u smislu člana 65. Zakona o radu čini: zarada koju je zaposleni ostvario za obavljeni rad i vrijeme provedeno na radu, uvećana zarada, naknada zarade i druga primanja utvrđena kolektivnim ugovorom, a koja su isplaćena u većem iznosu od iznosa propisanog opštim kolektivnim ugovorom.

Zarada se uvećava u skladu sa kolektivnim ugovorom za: rad duži od punog radnog vremena; noćni rad; rad u dane državnih i vjerskih praznika koji su zakonom utvrđeni kao neradni dani; minuli rad i u drugim slučajevima utvrđenim kolektivnim ugovorom.

Prosječna zarada izračunava se tako što se ukupno isplaćena masa zarada u mjesecu dijeli sa brojem zaposlenih na koje se odnose izvršene isplate.

Zaradu bez poreza i doprinosa čini zarada umanjena za poreze i doprinose na teret zaposlenog.

Indeks realne prosječne zarade bez poreza i doprinosa predstavlja odnos između indeksa nominalne prosječne zarade bez poreza i doprinosa i indeksa troškova života.

CIJENE**CIJENE PROIZVODJAČA INDUSTRIJSKIH PROIZVODA**

Pod prodajnom cijenom proizvođača industrijskih proizvoda podrazumijeva se cijena po kojoj proizvođači prodaju svoje proizvode u najvećim količinama nadomaćem tržištu. U cijenu ulazi regres koji ostvaruje prodavac a odbija se rabat, popust, kasa skonto i sl, ako ih prodavac odobrava kupcima. U cijenu ne ulazi porez na dodatu vrijednost.

Ove cijene prikupljaju se mjesečnim izvještajima koje neposredno dostavljaju izabrana preduzeća za oko 250 industrijskih proizvoda. Izbor industrijskih preduzeća izvršen je prema njihovom učešću u ukupnoj realizaciji određene oblasti.

Prosječne mjesečne cijene računaju se ponderisanjem tekućih mjesečnih cijena odgovarajućih proizvoda, a godišnje prosječne cijene proizvođača industrijskih proizvoda predstavljaju neponderisani prosjek mjesečnih cijena.

WAGES**Data sources**

The data on average wages present wages paid out in a month, and are obtained from regular monthly survey Monthly report on employees and their earnings (questionnaire RAD-1).

Coverage

The survey covers enterprises, institutions, cooperatives or organizations as well as their composite units of all kinds of ownership, by organizational and territorial principle, starting from the level of municipality.

Definitions

Wage, according to the Article 65 of the Law on Labor, consists of wage that an employee has earned for work performed and for the time spent at work, then increased earning, compensation of the earning and other incomes established by the Collective Contract and paid in the higher amount than foreseen by the General Collective Contract.

The wage is increased in accordance with Collective Contract for: over working time; night work; work in state and religious holidays established by the law as non-working days; past work, and for other cases under the Collective Contract.

Calculation of the average earnings is done so that the total sum of all monthly earnings is divided by the number of employees to whom the paid earnings refer.

Net salaries and wages are tax and contributions deducted (gross) salaries and wages.

Index of real average earnings without taxes and contributions is the ratio between nominal average earnings index and cost of living index.

PRICES**PRODUCER PRICES OF INDUSTRIAL PRODUCTS**

Producer prices of industrial products is the price according to which the producers sell their products in the most numerous quantities on the domestic market. The price also includes the regress achieved by the producer, and deduces the rebate, discounts, cash sconto, etc., if the producer approves them to the buyer. The price does not include value added tax..

These prices are collected through the monthly surveys submitted directly by the chosen enterprises for about 250 industrial products. The list of industrial enterprises is done on the basis of their participation in the total realization of certain area.

Average monthly prices are calculated by weighting the current monthly prices of corresponding products, and annual average producer prices of industrial products present the un-weighted average of the monthly prices.

Indeksi cijena izračunavaju se ponderima na bazi podataka o realizaciji industrijske proizvodnje. Svake godine vrši se korekcija pondera, a novi ponderi izračunavaju se svake pete godine.

Indeksi cijena proizvođača industrijskih proizvoda preračunavaju se početkom svake godine na prethodnu godinu kao bazu.

CIJENE NA MALO

Cijene na malo su cijene po kojima trgovina na malo, individualni proizvođači i vršioци usluga prodaju svoje proizvode i usluge krajnjim potrošačima, uključujući porez na promet.

Cijene na malo prate se u četiri grada Crne Gore: Podgorici, Nikšiću, Kotoru i Pljevljima koji predstavljaju veće tržišne centre. Cijene industrijsko-neprehrambenih proizvoda snimaju se jedanput mjesečno u periodu od 3-10-og, industrijsko-prehrambenih proizvoda od 11-14-og, usluga od 14-16-og a cijene poljoprivrednih proizvoda dva puta mjesečno i to: 1-7-og i 15-21-og u mjesecu.

Prosječne mjesečne cijene za grad kod svih proizvoda i usluga, računaju se neponderisanom aritmetičkom sredinom, dok se prosječne mjesečne cijene za Crnu Goru računaju na bazi prosječnih cijena četiri grada koje se ponderišu strukturom prometa količina realizovanih u trgovini na malo i pijaci.

Prosječne godišnje cijene industrijskih proizvoda i usluga predstavljaju neponderisani prosjek cijena za dvanaest mjeseci, a godišnje cijene poljoprivrednih proizvoda dobijaju se ponderisanjem prosječnih mjesečnih cijena podacima o prometu na malo po mjesecima.

Početkom svake godine vrši se korektura pondera na bazi rasta cijena. Indeksi cijena na malo preračunavaju se početkom svake godine na prethodnu godinu kao bazu.

INDEKS TROŠKOVA ŽIVOTA

Indeks troškova života je poseban vid indeksa cijena na malo artikala i usluga lične potrošnje, koji se računa prema određenoj strukturi potrošnje gradskih domaćinstava.

Indeks troškova života izračunava se prema namjeni potrošnje, vremenu potrošnje (mjesečni, godišnji, višegodišnji), i podjelom na robe i usluge.

ŠUMARSTVO

Izvori podataka i obuhvatnost

Podaci se prikupljaju mjesečnim izvještajem ŠUM-22. Ovim izvještajem obuhvaćena su šumarska i druga preduzeća koja u državnim šumama vrše proizvodnju šumskih sortimenata, bez obzira da li im je proizvodnja šumskih sortimenata osnovna djelatnost ili nije.

Price indexes are calculated with weights based on the data on the total realization of industrial production. The correction of weights is done every year, and the new weights are calculated every five years.

Indices of producer prices of industrial products are recalculated in the beginning of each year using the previous year as the base year.

RETAIL PRICES

Retail prices are the prices that retail shops, individual producers and services providers apply in selling goods to final users including turnover tax.

Retail prices are surveyed in four towns of Montenegro: Podgorica, Nikšić, Kotor, and Pljevlja that represent major trade centers. The prices of industrial non-food products are surveyed once in a month (in the period 3rd to 10th in a month), prices of industrial food products (11th -14th in a month), service (14th -16th in a month), and prices of agricultural products twice a month: 1st -7th and 15th -21st of a month.

Average monthly prices for a town for all products and services are calculated by the non-weighted arithmetic average, while average monthly prices for Montenegro are calculated on the basis of average prices for four towns weighted by the structure of turnover realized in retail trade and at the market.

Average annual prices for industrial products and services present non-weighted prices average for 12 months, and annual prices for agricultural products are obtained by weighting average monthly prices with the data on retail turnover by months.

The weights are updated by the price changes at the beginning of each year. Retail price index is recalculated at the beginning of each year relative to the previous year as a base year.

COSTS OF LIVING INDEX

Costs of living index is special type of retail price index of products and services for private consumption, which is calculated by certain structure of consumption of urban households.

Costs of living index is calculated according to the purpose, and time of consumption (monthly, annual, and multiannual), and by the division between goods and services

FORESTRY

Data sources and coverage

The data are collected on the basis of the monthly survey ŠUM-22. This report covers forestry and other enterprises dealing with production of forest assortments in state forests, disregarding if forest assortments production is their basic activity or not.

Definicije

Indeks fizičkog obima iskorišćavanja šuma obračunava se na osnovu podataka o proizvodnji šumskih sortimenata,

prema nomenklaturi proizvoda i ponderacionih koeficijenata. Količine predstavljaju neto drvenu masu sortimenata izraženu u kubnim metrima. Za izračunavanje indeksa proizvodnje šumskih sortimenata kao koeficijenti ponderacije koriste se prosječne prodajne cijene proizvoda.

INDUSTRIJA**Izvori podataka**

Prikazani podaci prikupljaju se mjesečnim izvještajima industrije na obrascu IND-1.

Obuhvatnost

Mjesečnim izvještajem industrije obuhvataju se sva preduzeća kao i njihovi djelovi koji obavljaju industrijsku djelatnost, odnosno koji su prema Klasifikaciji djelatnosti razvrstani u sektore: Vajenje rude i kamena, Prerađivačka industrija i Proizvodnja i snabdijevanje električnom energijom, gasom i vodom. Preduzeća neindustrijskih djelatnosti su izvještajne jedinice ako u svom sastavu imaju jedinicu koja se bavi industrijskom djelatnošću.

Nomenklatura

Proizvodnja se iskazuje prema Nomenklaturi industrijskih proizvoda, koju čine industrijski proizvodi i usluge razvrstane po djelatnostima u kojima su proizvedeni.

Indeksi

Indeks fizičkog obima industrijske proizvodnje formiran je na osnovu podataka o količinama proizvoda i ponderacionog sistema. Podaci o količinama daju se prema Nomenklaturi proizvoda i sirovina.

Za obračun indeksa fizičkog obima industrijske proizvodnje ponderi izražavaju prosječnu dodatu vrijednost po jedinici proizvoda.

GRAĐEVINARSTVO

Podaci o građevinarstvu prikupljaju se na osnovu kvartalnog izvještaja GRAĐ – 31, kojim se obuhvataju sva preduzeća iz sektora građevinarstva, kao i jedinice koje obavljaju građevinsku djelatnost, a nalaze se u sastavu negrađevinskih preduzeća. Podaci se prikupljaju od preduzeća iz Crne Gore kao i poslovnih jedinica stranih preduzeća koji obavljaju građevinsku djelatnost u Crnoj Gori.

Vrijednost izvršenih radova izražena je u tekućim cijenama i predstavlja stvarno izvršene radove.

Podaci o vrijednosti izvršenih građevinskih radova daju se na osnovu privremenih situacija koje ispostavljaju izvođači radova.

Definitions

The physical volume index of forests exploitation is calculated on the basis of data on the production of forest

assortments, according to the present nomenclature of products and weights coefficients. Quantities represent net wood mass of assortments expressed in cubic meters. In order to calculate the index of forest assortments production, average purchase prices are used as weighting coefficients.

INDUSTRY**Sources of data**

The shown data are collected by monthly surveys (through the questionnaire IND-1).

Coverage

Monthly industry survey includes all enterprises, as well as their parts, performing the industrial activity, i.e. those that are according to the Classification of Activities classified into the following sectors: Mining and quarrying, Manufacturing, Electricity, gas, and water supply. Enterprises of non-industrial activities represent reporting units if they have in their structure a unit dealing with industrial production.

Nomenclature

The production is presented according to the Nomenclature of industrial products, including industrial products and services structured according to the activities in which they were produced.

Indices

Index of physical scope of industrial production is formed on the basis of data on product quantities and weighting system. The data are provided according to the Nomenclature of products and raw materials. In the calculation of the index of physical scope of industrial production, the weights express the average value added per product unit.

CONSTRUCTION

Data on construction are collected on the basis of quarterly construction survey GRAĐ – 31 that includes all enterprises from construction sector as well as the units that perform construction activity and are integrated in non-construction enterprises. The data are obtained from enterprises in Montenegro as well as from business units performing construction activity in Montenegro.

The value of finished work is expressed at the current prices and represents works actually performed.

The data on the value of construction works done are obtained on the basis of temporary situation reported by the contractors.

Zaposleni na građenju su zaposleni na gradilištima koji obavljaju građevinske, instalaterske i završne radove. Nijesu uključeni zaposleni koji rade na inženjersko-tehničkim i administrativnim poslovima.

Izvršeni efektivni časovi predstavljaju časove izvršenog rada na građevinskim radovima.

Nove narudžbe predstavljaju ukupnu vrijednost ugovorenih radova između proizvođača i treće strane na osnovu zaključenog ugovora.

SPOLJNA TRGOVINA

Izvori i metodi prikupljanja podataka

Izvor podataka za statistiku spoljne trgovine je Jedinствена Carinska Isprava o izvozu i uvozu robe, koju prilikom carinjenja robe, u ime preduzeća, podnose carinarnicama špediterska preduzeća koja imaju dispoziciju carinskog obveznika.

Obuhvatnost

Pri izvozu obuhvata se sva roba koja potiče iz domaće odnosno proizvodnje iz unutrašnjeg robnog prometa uključujući i tzv. nacionalizovanu robu (roba koja je bila uvezena i ocarinjena, pa se u nepromijenjenom ili doradenom stanju izvozi kao roba porijekla iz Crne Gore na strano tržište). Uvoz obuhvata svu robu uvezenu iz inostranstva koja je ocarinjena i puštena u unutrašnji promet u cilju reprodukcije, investicija ili široke potrošnje. Uključene su i isporuke raznih dobrotvornih organizacija i privatne poklon pošiljke.

Po preporukama statističkog ureda EU i UN u rezultate robne razmjene od 01.01.2004. uključuje se finansijski zakup, reexport i vraćena roba.

Definicije

Vrijednost robe u spoljnoj trgovini iskazana je na osnovu cijena koje su postigla preduzeća prilikom sklapanja ugovora. Sve vrijednosti obračunate su na bazi pariteta franko granice Crne Gore: FOB-cijene za izvoz, CIF-cijene za uvoz.

Statistička vrijednost robe koja se izvozi jeste fakturna vrijednost robe. Statistička vrijednost robe koja se uvozi jeste vrijednost koja predstavlja carinsku osnovicu. Podaci o vrijednosti su obračunati po tekućim kursovima koji se primjenjuju za utvrđivanje carinske osnovice. Po tekućim kursovima koji se primjenjuju za utvrđivanje carinske osnovice takođe je izvršen obračun troškova transporta, osiguranja, pretovara i sl. koji se plaćaju u stranoj valuti.

Registracija podataka spoljne trgovine po zemljama vrši se po principu zemlje namjene kod izvoza i zemlje porijekla kod uvoza. To znači da se pri izvozu registruje zemlja u kojoj se roba troši i dalje prerađuje, a pri uvozu ona zemlja u kojoj je roba proizvodnjom dovedena u stanje u kome se uvozi.

UNUTRAŠNJA TRGOVINA

Izvori podataka

Podaci o unutrašnjoj trgovini preduzeća koja se bave trgovinom na malo, prikupljaju se redovnim mjesečnim istraživanjem. Istraživanje je na bazi uzorka i obuhvaćena su preduzeća koja su u Registru jedinica razvrstavanja prema klasifikaciji djelatnosti razvrstana u sektor trgovine.

Employees within the construction are employees at the construction sites performing construction, installation, and finishing works. It does not include employees engaged in engineering and administrative tasks.

Working hours are the actual hours that the workers engaged at construction sites spent doing work.

New orders represent the total value of contracted orders between producers and the third part on the basis of the concluded contract.

EXTERNAL TRADE

Sources and methods of data collection

Data source for external trade statistics is Single Administrative Document on import and export of goods, submitted, on behalf of enterprises, by shipping agents having the disposition of Custom tributary.

Coverage

Export covers all goods of domestic i.e. internal production origin, including so-called nationalized merchandise, (imported goods cleared through the customs, and unchanged exported as goods of Montenegro origin). Import covers all merchandise imported, cleared through the customs, and put on domestic market for reproduction, investment or consumption purposes. Deliveries of various charity organizations and private gifts are also included.

As of 01 January 2004, according to the recommendations of EU and UN Statistical Offices, the results of trade of goods also include financial leasing, re-export and returned goods.

Definitions

Value of goods in external trade statistics is shown on the basis of prices fixed by organizations and enterprises by contractual stipulation. All values have been calculated on the basis of parity free on Montenegrin border, i.e. F.O.B. export prices and C.I.F. import prices.

Statistical value of goods being exported is the invoice value of goods. Statistical value of goods being imported is the value representing customs base. Data on values are calculated on the basis of exchange rates applied for establishing customs base. Costs of transport, insurance and reloading, etc. paid in foreign currency are calculated at current exchange rates applied for establishing customs base.

Registration of external trade data by country is carried out according to principle of destination country for the export and origin country for the import. It means that, in case of export, the country in which goods are consumed or further processed is registered, and in case of import – the country where the goods have been produced in the condition in which they have been imported.

INTERNAL TRADE

Sources of data

Data of internal trade of enterprises dealing with retail trade are collected through regular monthly survey. The survey is sample based and includes all enterprises which are in the Administrative register classified in the sector Trade.

Podaci o prodaji i otkupu proizvoda poljoprivrede, šumarstva i ribarstva prikupljaju se mjesečnim izvještajima o realizaciji poljoprivrednih proizvoda sopstvene proizvodnje poljoprivrednih preduzeća i zemljoradničkih zadruga i mjesečnim izvještajem o otkupu poljoprivrednih proizvoda od individualnih gazdinstava.

Obuhvatnost

Statistika unutrašnje trgovine obuhvata i prikazuje promet preduzeća čija je osnovna djelatnost trgovina na malo.

Mjesečnim izvještajima o prodaji i otkupu proizvoda poljoprivrede, šumarstva i ribarstva obuhvaćena su poljoprivredna preduzeća, zemljoradničke zadruge kao i druga preduzeća koja su ovlaštena da vrše otkup proizvoda od individualnih gazdinstava u cilju dalje prerade ili prodaje.

Definicije

Promet robe u trgovini na malo predstavlja vrijednost prodate robe preduzeća na malo koja je prodana krajnjim potrošačima, odnosno stanovništvu za ličnu potrošnju i upotrebu u domaćinstvu, kao i pravnim i fizičkim licima za obavljanje djelatnosti.

Podaci o prodaji i otkupu proizvoda poljoprivrede, šumarstva i ribarstva obuhvataju vrijednost prodaje proizvoda iz sopstvene proizvodnje preduzeća i zadruga kao i otkup vrijednosti proizvoda od individualnih gazdinstava, koje vrše zato ovlaštene organizacije u cilju dalje prerade ili prodaje.

UGOSTITELJSTVO

Izvori podataka i obuhvatnost

Podaci o ostvarenom prometu u ugostiteljstvu po mjesecima, se procjenjuje na osnovu ocjene trenda prometa, dok se ne dobiju rezultati redovnog tromjesečnog istraživanja, ugostiteljstva. Mjesečne procjene se koriguju na osnovu dobijenih rezultata.

Podaci o prometu u ugostiteljstvu prikupljaju se tromjesečnom izvještajnom službom za ugostiteljska preduzeća, po grupama usluga. Godišnjom izvještajnom službom prate se ugostiteljska preduzeća i preduzetnici. Mjesečni podaci ne obuhvataju promet preduzetnika.

Definicije

Prikazani promet u ugostiteljstvu predstavlja vrijednost izvršenih ugostiteljskih usluga koje obuhvataju usluge smještaja, ishrane, točenja pića, kao i druge usluge koje se uobičajeno obavljaju u ugostiteljstvu.

TURIZAM

Izvori podataka i obuhvatnost

Podaci o broju dolazaka turista i noćenja prikupljeni su redovnim mjesečnim izvještajem (obrazac TU-11). Izvještaji se sastavljaju na osnovi evidencija u knjigama gostiju. Istraživanje se sprovodi na bazi potpunog obuhvata.

Data about sales and buy out of products in agriculture, forestry and fishery are collected through monthly reports on realization of agricultural products of own production of agricultural enterprises and cooperatives and through monthly report on buying out of agricultural products from individual holdings.

Coverage

Statistics of internal trade covers and presents the turnover of enterprises whose primary activity is retail trade.

Monthly survey on sales and buying out of products in agriculture, forestry and fishing covers agricultural enterprises, agricultural cooperatives, as well as other enterprises authorized to do the buying out of products from individual holdings for future processing or sale.

Definitions

Turnover of goods in retail trade is the retail value of goods of an enterprise sold to final users, i.e., the population for personal consumption and use in household, as well as to private and physical persons for performing the activity.

Data on sales and buying out of products in agriculture, forestry and fishing cover the value of sale of products from own production of enterprises and cooperatives as well as the buying out of value of products from individual holdings, performed by authorized agencies for further processing or sale.

CATERING

Sources of data and coverage

Data on realized turnover in catering by month are estimated on the basis of estimate of trend of turnover, until the results of the regular quarterly survey in catering are received. Monthly estimates are corrected on the basis of received results.

Data on turnover in catering are collected through quarterly survey for enterprises in catering, by groups of services. The annual survey collects data on enterprises in catering and entrepreneurs. Monthly data do not include turnover of entrepreneurs.

Definitions

Presented turnover in catering presents the value of performed catering services including the services of accommodation, food, pouring beverages, as well as other services usually performed in catering.

TOURISM

Sources of data and coverage

Data about arrivals of tourists and overnight stays are collected through regular monthly survey (form TU-11). The reports are compiled on the basis of records in the guest books. The survey is conducted on the basis of full coverage.

Definicije

Izveštajne jedinice jesu svi poslovni subjekti (preduzeća/trgovačka društva, zadruge, ustanove, itd.) i njihovi dijelovi koji obavljaju djelatnost pružanja usluga smještaja turistima; zdravstvene ustanove za svoje objekte u kojima osobe borave radi medicinske rehabilitacije (osobe same snose naknadu za taj boravak); poslovni subjekti i njihovi dijelovi koji se bave posredovanjem u pružanju smještajnih usluga (putničke agencije); poslovni subjekti koji se bave posredovanjem u smještaju gostiju u seoskim kućanstvima; turističke zajednice i druga nadležna tijela za privatne sobe, apartmane ili kuće koje neposredno iznajmljuju turisti; poslovni subjekti i njihovi dijelovi za svoja odmarališta; poslovni subjekti koji su osnovali ili vode brigu i nadzor nad planinarskim domovima; vojne ustanove za svoje ugostiteljske objekte za smještaj gostiju; poslovni subjekti koji se za vrijeme školskih praznika koriste školama, domovima i sličnim objektima kao privremenim smještajnim kapacitetima; Istraživanjem su obuhvaćene sve pravne osobe i njihovi dijelovi te fizičke osobe koje iznajmljuju smještajne objekte turistima (komercijalni objekti).

Turist je svaka osoba koja u mjestu van svog prebivališta provede najmanje jednu noć u ugostiteljskom ili drugom objektu za smještaj turista radi odmora ili rekreacije, zdravlja, studija, sporta, religije, porodice, poslova, javnih misija ili skupova. U turiste se ne uključuju migranti, pogranični radnici, diplomati, članovi vojnih snaga na redovnim zadacima, izbjeglice, itd.

Prebivalište je mjesto u kojem se osoba nastanila s namjerom da u njemu stalno živi. Turist je registrovan u svakom mjestu ili objektu u kojem boravi i zbog toga, u slučaju promjene mjesta ili objekta, dolazi do njegova ponovnog iskazivanja, a time i do dvostrukosti u podacima. Prema tome, statistika evidentira broj dolazaka turista, a ne broj turista.

SAOBRAĆAJ, SKLADIŠTENJE I VEZE

Podaci o prevozu putnika i robe u unutrašnjem, pomorskom, vazdušnom i drumskom saobraćaju odnose se na prevoz koji obavljaju saobraćajna preduzeća registrovana u saobraćajnoj djelatnosti, bez obzira da li prevoz obavljaju unutar ili van granica naše zemlje za račun domaćeg ili inostranog korisnika.

Podaci se prikupljaju redovnim mjesečnim i godišnjim statističkim izveštajima saobraćajnih preduzeća.

Željeznički saobraćaj

Prevezeni putnici u unutrašnjem saobraćaju obuhvataju otputovala putnike, otputovala putnike u inostranstvo, prispjele iz inostranstva i putnike u tranzitu. Prevezeni teret obuhvata utovarenu robu u unutrašnjem i u međunarodnom saobraćaju: uvoz, izvoz i tranzit.

Promet na aerodromima

Podaci o prometu putnika i robe na aerodromima dobijeni su na osnovu redovnih mjesečnih i godišnjih izveštaja preduzeća za aerodromske usluge i obuhvataju kompletan promet, odnosno i domaće i strane avione.

Definitions

Reporting units are all business subjects (enterprises/trade companies, cooperatives, institutions, etc.) and their parts performing activity of providing accommodation services to tourists; health institutions for their objects attended by persons for medical rehabilitation (persons pay by themselves for the stay); business subjects and their parts dealing with intermediation in providing accommodation services (travel agencies); business subjects dealing with intermediation in accommodation of guests in village houses; tourist unions and other competent bodies for private rooms, apartments or houses directly rented by tourists; business subjects and their parts for their resorts; business subjects which founded or take care to monitor the mountain lodgings; military institutions for their catering objects for accommodation of guests; business subjects which are during school holidays used by schools, hostels and similar objects as temporary placing capacities. The survey covers all legal persons and their parts as well as persons renting accommodation to tourists (commercial objects).

Tourist is a person who spends at least one night in an accommodation facility or some other object for accommodation of tourists, in a place other than his/her place of permanent residence for the reason of vacation or recreation, health, studies, sports, religion, family, business, public missions or meetings. Tourists do not include migrants, border workers, diplomats, members of military force in the regular duty, refugees, etc.

Residence is the place where the person is settled intending to permanently live in it. Tourist is registered in a place or object where it resides and due to it, in the case of change of place or object, the double reporting may appear, which may lead to the double data. There the statistics records the arrivals of tourists, and not the number of tourists.

TRANSPORT, STORAGE AND COMMUNICATIONS

Data on the transport of passengers and goods in the internal, marine, air and road transport refer to the transport performed by transport enterprises registered in transport activities, no matter whether the transport is done inside or outside the borders of our country on the account of domestic or foreign user.

Data are collected through regular monthly or annual statistical surveys from reports of transport enterprises.

Railway transport

Passengers transported in domestic transport include departed passengers, passengers departed abroad, passengers who arrived from abroad and passengers in transit. Transported cargo includes loaded goods in domestic and international transport: import, export and transit.

Traffic in airports

Data about traffic of passengers and goods in airports are received on the basis of regular monthly and annual reports of enterprises for airport services and they cover complete traffic, i.e., both domestic and foreign airplanes.

Drumski saobraćaj

Podaci o prevozu odnose se na rad domaćih preduzeća drumskog saobraćaja u unutrašnjem i međunarodnom prevozu putnika i tereta.

Gradski saobraćaj

Obuhvaćen je prevoz putnika koji obavljaju saobraćajne organizacije u gradskom i prigradskom saobraćaju

Poštanski saobraćaj

Poštanski saobraćaj obuhvata: Poštanske usluge, telegrafске i telefonske usluge. Poštanske aktivnosti obuhvataju sljedeće usluge: prenos pismonosnih i paketnih pošiljki i usluge platnog prometa.

Pismonosne pošiljke odnose se na otpremljena pisma, dopisnice, novine i časopise, preporuke i vrijednosna pisma u unutrašnjem prometu, a u međunarodnom prometu i u prispjecu. Tranzit nije obuhvaćen.

Platni promet obuhvata uplate poštanskim uputnicama, po žiro i tekućim računima i računskim knjižicama, isplate međunarodnim poštanskim uputnicama i žiro i tekućim računima i računskim i invalidskim knjižicama.

Telegrafске usluge obuhvataju otpremu telegrama u unutrašnjem prometu i prometu sa inostranstvom, uključujući i tranzit.

Telefonske usluge obuhvataju fiksnu i mobilnu mrežu i prikazuju se u onim jedinicama koje se i koriste u tehničkom smislu-minutima.

MONETARNI AGREGATI**Izvori podataka**

Za izradu monetarne statistike su: bilanci Centralne banke Crne Gore i bilanci banaka. Banke dostavljaju podatke u skladu sa Odlukom o izvještajima koje banke dostavljaju Centralnoj banci Crne Gore.

Za prikupljanje i obradu podataka monetarne statistike nadležna je Centralna banka Crne Gore.

Definicije

Monetarnu bazu (M0) čine depoziti banaka kod CBCG (obračunski račun banaka i izdvojena obavezna rezerva - do januara 2008. bez dijela koji banke drže u državnim zapisima) i procijenjeni iznos gotovog novca u opticaju.

Monetarni agregat (M1) čine M0, depoziti po viđenju nebankarskog sektora kod banaka i CBCG, u eurima i drugim valutama, isključujući depozite centralne Vlade.

Monetarni agregat (M11) čini M11 uvećan za depozite centralne Vlade po viđenju, u eurima i drugim valutama.

Monetarni agregat (M2) čine M1 i oročeni depoziti nebankarskog sektora kod banaka i CBCG, u eurima i drugim valutama, isključujući depozite centralne Vlade.

Monetarni agregat (M21) čini M11 uvećan za oročene depozite (uključujući depozite centralne Vlade), u eurima i drugim valutama.

Depoziti stanovništva – u tabeli je prikazano stanje ukupnih depozita fizičkih lica kod banaka na kraju perioda i njihova struktura po ročnosti.

Road transport

Data about transport refer to the work of domestic enterprises of road transport in internal and international transport of passengers and cargo.

Local transport

It includes the transport of passengers performed by transport organizations in local and commuter services.

Postal communications

Postal communications include: Postal services, telegraphic and telephone services. Postal activities include the following services: transport of letter mail and services of balance of payments.

Letter mail refer to only to mail sent, postal cards, newspaper and magazines, registered and value letters in domestic transport, as well as for the receiving in the international communications. The transit is not included.

Balance of payment includes payments made by postal money orders, by giro and current accounts and account booklets, payments by international postal money orders and giro and current accounts and account and disability booklets.

Telegraph services refer to sending of telegrams in the country as well as to foreign countries, including the transit.

Telephone services include fixed and mobile networks and are presented in the units used in the technical sense - minutes.

MONETARY AGGREGATS**The sources of data**

For preparation of monetary statistics are: the balance sheets of the Central Bank of Montenegro and of banks. Banks submit their data according to the Decision on reports that banks submit to the Central Bank of Montenegro.

The Central Bank of Montenegro is responsible for the collection and processing of the data of monetary statistics.

Definitions

Monetary base (M0) comprises banks' deposits in the CBM -Payment Operations (banks' giro accounts and allocated reserve requirement until January 2008, excluding the part which banks keep as treasury bills) and the estimated amount of cash in circulation.

Monetary aggregate (M1) comprises M0, demand deposits by the non-banking sector with banks and the CBM, in EUR and other currencies, excluding deposits of the central Government.

Monetary aggregate (M11) comprises M1 plus the central Government's demand deposits in EUR and other currencies.

Monetary aggregate (M2) includes M1 and non-banking sector's time deposits with banks and CBM, in EUR and other currencies, excluding deposits of the central Government.

Monetary aggregate (M12) comprises M11 plus the central Government's time deposits in EUR and other currencies.

Deposits by households – the table present the balance of total deposits of individuals by households at the end of period and their structure by time.

PLATNI BILANS CRNE GORE

Bilans plaćanja sastavlja se u skladu sa metodologijom koju je preporučio Međunarodni monetarni fond (Balance of payments Manual, fifth edition, 1993). Izvori podataka su: Republička uprava carina Crne Gore, MONSTAT, Elektroprivreda Crne Gore, Ministarstvo finansija, poslovne banke i CBCG. Bilans plaćanja se iskazuje u eurima. Preračunavanje vrijednosti transakcija iz originalnih valuta u izvještajnu valutu obavlja se: primjenom srednjih kurseva CBCG na dan transakcije, primjenom mjesečnih i godišnjih srednjih prosječnih kurseva CBCG, primjenom srednjeg dnevnog kursa na kraju perioda kod procjene transakcija čija se razlika stanja prati.

Početkom 2005. godine izvršena je revizija podataka koji se odnose na 2004. godinu. Naime, tokom 2004. godine postalo je tehnički moguće pratiti robne transakcije između Crne Gore i Srbije na osnovu podataka Republičke uprave carina Crne Gore, odnosno carinskih deklaracija. Do 2004. godine izvor za praćenje ovih tokova su bili jedino podaci poslovnih banaka o ostvarenom platnom prometu sa inostranstvom, odnosno ITRS. Izvor podataka o spoljnoj trgovini od 2005. godine je Monstat. CBCG vrši prilagođavanje podataka dobijenih od statistike spoljne trgovine u cilju njihovog usklađivanja sa metodologijom MMF-a (Balance of Payments Manual, Fifth edition, IMF, 1993).

Kod evidencije transportnih usluga koriste se podaci banaka o ostvarenom platnom prometu sa inostranstvom.

Prihodi od **putovanja** obuhvataju procijenjene prihode od turizma, koji se dopunjavaju sa podacima o pruženim zdravstveno-rekreativnim uslugama i potrošnjom u cilju školovanja. Do prihoda od turizma se dolazi na osnovu broja noćenja (podatak MONSTAT-a) i procijenjene prosječne dnevne potrošnje. Početkom 2006. godine korigovan je model za procjenu prihoda od turizma, korekcija se odnosi na 2003. i 2004. godinu. Podaci o rashodima za turizam dobijaju se na osnovu ostvarenog platnog prometa sa inostranstvom.

Finansijske usluge (usluge osiguranje i reosiguranja, zastupnička i posrednička provizija i provizija i troškovi u bankarskom poslovanju) se prate na osnovu statistike platnog prometa sa inostranstvom. Ostale usluge obuhvataju građevinske usluge, ptt i komunikacijske usluge, usluge osiguranja, kompjuterske i informacione usluge, autorska prava i honorare od izdavanja dozvola i ostale poslovne usluge. Podaci o njima se dobijaju iz statistike platnog prometa sa inostranstvom, a na osnovu izvještaja banaka.

Račun dohotka uključuje podatke iz statistike platnog prometa sa inostranstvom o kompenzacijama, zaposlenima, plaćanjima i naplatama po osnovu kamata, plaćenim i naplaćenim dividendama. Izvor podataka su izvještaji banaka i CBCG.

Tekući transferi obuhvataju podatke o transferima sektora vlade i ostalih sektora koji se dobijaju iz statistike platnog prometa sa inostranstvom.

Direktne i portfolio investicije prate se na osnovu podataka statistike platnog prometa sa inostranstvom i sprovedenih anketa. Ostale investicije koje obuhvataju podatke o kreditima, trgovinskim kreditima, gotovini i depozitima se dobijaju iz statistike platnog prometa sa inostranstvom.

Rezerve Centralne banke Crne Gore obuhvataju sredstva komercijalnih banaka deponovana kod ino banaka, sredstva Centralne banke deponovana kod ino banaka, sredstva u trezoru CBCG i rezervne pozicije kod MMF-a. Izvor podataka je CBCG (monetarna statistika).

THE BALANCE OF PAYMENT OF MONTENEGRO

The balance of payments is prepared according to the methodology prescribed by the International Monetary Fund (Balance of Payment, 1993). The sources of data are: Custom Administration of Montenegro, MONSTAT, Montenegrin Electric Enterprise, the Ministry of Finance, commercial banks, and the Central Bank of Montenegro. The balance of payments is presented in EUR. Recalculation of the transaction values from the original currency to the reporting currency is performed by: using the mean exchange rate from the Central Bank of Montenegro and at the end of the period with evaluation transactions whose change is monitored using daily mean exchange rate.

The revision of data referring to 2004 was done in the beginning of 2005. Namely, it was technically possible in 2004 to follow transaction of goods between Montenegro and Serbia on the basis of data from Customs Administration of Montenegro i.e., the customs declarations. Until 2004 the source for viewing these currents was only data of banks about the achieved balance of payments with foreign countries, i.e., ITRS.

Since 2005, the source of data about external trade is Monstat. CBM makes adjustments of data received from external trade statistics in order to harmonize them with the IMF methodology (Balance of Payments Manual, Fifth edition, IMF, 1993).

The registering of transportation services uses banks' data on performed international payment operations.

Incomes from travelling include estimated incomes from tourism, which are supplemented by data on provided health- recreation services and expenditures for education. Data on expenditures in tourism are obtained on the basis of the number of tourist overnight stays (data from MONSTAT) and estimated average daily consumption.

The model for estimation of incomes from tourism was modified in the beginning of 2006, and the correction refers to 2003 and 2004. Data on expenditures in tourism are obtained on the basis of international payment operations.

Financial services (insurance and reinsurance, representative and mediation commission fees, and commission fees and expenses for banking operations) are covered on the basis of foreign payment operations statistics. Other services include investment work in foreign countries, PTT and communication services, forwarding services, expenses for the maintenance of representative offices, computer and information technology services, author's fee, and fee for license issuance, as well as other business services. The data is obtained from foreign payment operations statistics and banks' reports.

Income statement comprises data from foreign payment operations statistics on compensations to employees, payments, and charged dividends. The source of data is banks' reports.

Current transfers include data about transfers of Government sector and other sectors received from balance of payment with foreign countries.

Direct and portfolio investments are followed on the basis of data of international payment operations statistics and conducted surveys. Other investments include data about loans, trade loans, cash and deposits and are obtained from the balance of payment statistics with foreign countries.

The Central Bank of Montenegro's reserves comprise commercial banks' fund deposited in international bank and the CBM funds deposited in foreign banks, funds in the CBM treasury and reserve positions in IMF. The source of data is CBM (monetary statistics).

REDAKCIJA / EDITORIAL BOARD :

RAJKO LAKOVIĆ, rukovodilac / coordinator
Gordana Radojević, Gojko Dragaš, Branka Šušić – Radovanović,
Radmila Šišević, Ranko Bošković, Darko Krkeljić

Tehnički urednik / *Editor* : Radmila Šišević
Grafički prikazi / *Graphs* : Časlav Lakić
Prevod / *Translated by*: Katarina Bigović, Vladimir Radenović

IZDAJE I ŠTAMPA: Zavod za statistiku Crne Gore – MONSTAT, Podgorica, IV Proleterske br. 2
Prilikom korišćenja navesti izvor – preporučuje se skraćenica – MSP, br.- /2008

ODGOVARA: Radomir Đurović, direktor.

Izlazi 25-og u mjesecu. Tiraž 150 primjeraka. Prodajno odjeljenje: Tel: +382 81 248-116

PUBLISHED AND PRINTED BY: Statistical Office of Montenegro – MONSTAT, Podgorica, IV Proleterske no. 2
Data using is subject to quoting source – abbreviation recommended: MSR, no. -/2008

RESPONSIBLE: Radomir Đurović, Director.

Issued on 25th in a month. Circulation 150 copies. Department of sales: +382 81 248-116

E-mail: statistika@cg.yu Web Site: www.monstat.cg.yu