

ZAVOD ZA STATISTIKU CRNE GORE  
*STATISTICAL OFFICE OF MONTENEGRO*

GODINA LVII / YEAR ( 57)

ISSN 0354-365X

**MJESEČNI STATISTIČKI PREGLED**  
***MONTHLY STATISTICAL REVIEW***

**2009**

**8**

**PODGORICA, 2009**

IZDAJE I ŠTAMPA: Zavod za statistiku Crne Gore - MONSTAT  
*PUBLISHED AND PRINTED BY: Statistical Office of Montenegro - MONSTAT*

ODGOVARA: Radomir Đurović, direktor  
*RESPONSIBLE: Radomir Đurović, Director*

Podgorica, IV Proleterske br. 2, Tel: +382 20 230-811  
E-mail: [statistika@monstat.org](mailto:statistika@monstat.org) Web Site: [www.monstat.org](http://www.monstat.org)

CIP – Katalogizacija u publikaciji  
Centralna narodna biblioteka Crne Gore, Cetinje  
311 / 314

Mjesečni statistički pregled = Monthly  
Statistical review. Urednik Rajko Laković. – God.  
1, br.1 (1953) – . - Podgorica ( IV Proleterske br. 2)  
Zavod za statistiku Crne Gore – Monstat, 1992 ( Podgorica:  
Zavod za statistiku Crne Gore ) . – 30 cm

Mjesečno. – je nastavak: Mjesečni statistički pregled  
NR Crne Gore (Titograd ) = ISSN 0544-912X  
ISSN 0354-365X = Mjesečni statistički pregled (Podgorica)  
COBISS. CG ID 07622928

## UVOD

U MJESEČNOM STATISTIČKOM PREGLEDU Zavod za statistiku – MONSTAT objavljuje podatke za Crnu Goru. To su službeni statistički podaci koji se prikupljaju i obrađuju u skladu sa programom statističkih istraživanja i rezultat su rada zvaničnih statističkih službi.

Statistički podaci u MJESEČNOM STATISTIČKOM PREGLEDU prikazani su u godišnjim, kvartalnim i mjesečnim serijama i sistematizovani su u dva dijela. Godišnje serije obuhvataju tri do pet posljednjih uzastopnih godina. Kvartalne serije se odnose na kvartale u prošloj i tekućoj godini, a mjesečne serije obuhvataju period od trinaest mjeseci iz tekuće i prethodne godine. Ispod odgovarajućih tabela, gdje je potrebno, daju se kratka objašnjenja.

Pored podataka koje prikuplja i obrađuje Zavod za statistiku Crne Gore - MONSTAT, u ovom broju PREGLEDA su objavljeni i podaci Zavoda za zapošljavanje i Centralne Banke Crne Gore.

Podaci za tekuću godinu su obično prethodni, pa su moguće manje greške koje se postepeno ispravljaju u narednim brojevima i obilježavaju se zvjezdicom, u onom broju PREGLEDA u kojem je izvršena ispravka.

Sadržaj publikacije je prilagođen međunarodnim potrebama i obavezama u smislu primjene Klasifikacije djelatnosti (NACE Rev1), koja se primjenjuje od 01.01.2001. godine.

Od januara 2008. godine MJESEČNI STATISTIČKI PREGLED je obogaćen novim sadržajima i preveden je na engleski jezik.

## INTRODUCTION

*Statistical Office of Montenegro publishes statistical data for Montenegro in the MONTHLY STATISTICAL REVIEW. These are the official statistical data collected and processed according to the Programme of Statistical Surveys as the result of official statistical services.*

*Statistical data in the MONTHLY STATISTICAL REVIEW are presented in annual, quarterly and monthly series and are systemized in two parts. The Annual series of data cover 3-5 last consecutive years. Quarterly series refer to quarters in the previous and current year, and monthly series include period of thirteen months from the previous and current year. Where necessary, short explanations are given below the tables.*

*Besides data collected by the Statistical Office of Montenegro - MONSTAT, this issue of MONTHLY STATISTICAL REVIEW also publishes data from Employment Agency and Central Bank of Montenegro.*

*Data for the current year are usually preliminary, so minor errors are possible and are gradually corrected in the following numbers, and they are marked with the small star in the number of the MONTHLY STATISTICAL REVIEW where the correction has been made.*

*The contents of the publication is adapted to the international needs and obligations regarding the application of the Classification of Activities (NACE, REV1), used since January 2001.*

*Since January 2008, the MONTHLY STATISTICAL REVIEW contains new contents and has been translated into English language.*

## ZNACI

## SYMBOLS

nema pojave	=	—	=	No occurrence of event
ne raspolaze se podatkom	=	...	=	Data not available
podatak je manji od 0,5 date jedinice mjere	=	0	=	Value not zero but less than 0,5 of the unit of E
prosjeak	=	Ø	=	Average
ispravljen podatak	=	*	=	Corrected data
nepotpun, odnosno nedovoljno provjeren podatak	=	( )	=	Incomplete or insufficiently checked data



**SADRŽAJ**

<b>UVOD</b> .....	3
<b>SADRŽAJ</b> .....	5
<b>OPŠTI PREGLED INDEKSA</b>	
Kvartalni indeksi .....	7
Mjesečni indeksi .....	8
<b>STANOVNIŠTVO</b>	
Prirodno kretanje stanovništva .....	10
Prirodno kretanje stanovništva po opštinama .....	11
Kretanje stanovništva unutar Crne Gore po opštinama .....	12
<b>ZAPOSLENOST I ZARADE</b>	
Zaposleni po sektorima djelatnosti .....	13
Zaposleni po opštinama .....	14
Nezaposlena lica .....	15
Prosječne zarade po sektorima djelatnosti .....	16
Prosječne zarade bez poreza i doprinosa po sektorima djelatnosti .....	17
Indeksi prosječnih zarada po sektorima djelatnosti .....	18
Indeksi prosječnih zarada bez poreza i doprinosa po sektorima djelatnosti .....	19
Prosječne zarade po opštinama .....	20
Prosječne zarade bez poreza i doprinosa po opštinama .....	21
<b>CIJENE</b>	
Indeksi cijena proizvođača industrijskih proizvoda .....	22
Indeksi potrošačkih cijena po grupama proizvoda .....	24
Indeksi potrošačkih cijena .....	26
<b>ŠUMARSTVO</b> .....	27
<b>INDUSTRIJA</b>	
Indeksi industrijske proizvodnje po sektorima .....	28
Indeksi industrijske proizvodnje po podsektorima .....	29
<b>GRADEVINARSTVO</b>	
Vrijednost izvršenih i ugovorenih radova, broj zaposlenih i izvršeni efektivni časovi .....	31
<b>SPOLJNA TRGOVINA</b>	
Izvoz i uvoz po zemljama .....	32
Izvoz i uvoz robe .....	33
<b>UNUTRAŠNJA TRGOVINA</b>	
Promet u trgovini na malo .....	36
Prodaja i otkup proizvoda poljoprivrede, šumarstva i ribarstva .....	37
<b>UGOSTITELJSTVO</b>	
Promet u ugostiteljstvu .....	38
<b>TURIZAM</b>	
Dolasci i noćenja turista po zemljama i vrsti mjesta .....	39
Dolasci i noćenja gostiju po vrstama turističkih mjesta .....	40
Broj dolazaka i noćenja turista .....	40
<b>SAOBRAĆAJ, SKLADIŠTENJE I VEZE</b>	
Željeznički saobraćaj .....	41
Drumski saobraćaj .....	42
Vazdušni saobraćaj .....	43
Pomorski saobraćaj .....	44
PTT saobraćaj .....	44
<b>MONETARNI AGREGATI I PLATNI BILANS</b> .....	45
<b>METODOLOŠKA OBJAŠNJENJA</b> .....	47

**CONTENTS**

<b>INTRODUCTION</b> .....	3
<b>CONTENTS</b> .....	5
<b>SUMMARY OF INDICES</b>	
Quarterly indices .....	7
Monthly indices.....	8
<b>POPULATION</b>	
Natural population changes .....	10
Natural population changes by municipality .....	11
Migrations inside Montenegro by municipality .....	12
<b>EMPLOYMENT AND WAGES</b>	
Employees by activity sectors .....	13
Employees by municipality .....	14
Unemployed persons .....	45
Average wages by activity sectors .....	16
Average wages without taxes and contributions by activity sector .....	17
Indices of average wages by activity sector .....	18
Indices of average wages without taxes and contributions by activity sector .....	19
Average wages by municipality .....	20
Average wages without taxes and contributions by municipality .....	21
<b>PRICES</b>	
Producers price indices for industrial products .....	22
Retail by groups of products.....	24
Consumer prices index .....	26
<b>FORESTRY</b>	27
<b>INDUSTRY</b>	
Indices of industrial production by sectors .....	28
Indices of industrial production by subsectors .....	29
<b>CONSTRUCTION</b>	
Value of finalized and ordered works, number of employees and finalized effective hours.....	31
<b>EXTERNAL TRADE</b>	
Exports and imports by countries .....	32
Exports and imports of goods .....	33
<b>DOMESTIC TRADE</b>	
Turnover in retail trade.....	40
Sale and buying out of products from agriculture, forestry and fishery .....	41
<b>CATERING</b>	
Turnover in catering .....	42
<b>TOURISM</b>	
Tourist arrivals and tourist overnight stays by country and type of resort.....	43
Tourist arrivals and tourist overnight stays by type of resort.....	44
Tourist arrivals and tourist overnight stays .....	44
<b>TRANSPORT, STORAGE AND COMMUNICATIONS</b>	
Railway transport .....	45
Road transport .....	46
Air transport .....	47
Marine transport.....	48
Postal, telegraph and telephone (PTT) communications .....	48
<b>MONETARY AGGREGATES AND BALANCE OF PAYMENTS</b> .....	49
<b>METHODOLOGICAL EXPLANATION</b> .....	51

## OPŠTI PREGLED INDEKSA / SUMMARY OF INDICES

## Kvartalni indeksi / Quarterly indices

	<b>2008 2007</b>	<b>Kvartali / Quarters</b>							
		<b>II 2008 I 2008</b>	<b>III 2008 II 2008</b>	<b>IV 2008 III 2008</b>	<b>I 2009 IV 2008</b>	<b>I 2009 I 2008</b>	<b>II 2009 II 2008</b>	<b>II 2009 I 2009</b>	
<b>STANOVNIŠTVO <sup>1)</sup></b>									<b>POPULATION <sup>1)</sup></b>
Živorodeni	104.4	104.0	122.2	96.2	85.2	95.3	100.3	105.5	Liveborn
Umrli	92.8	98.6	102.6	104.5	93.0	86.9	98.4	102.3	Deaths
Prirodni priraštaj	141.8	121.1	172.3	83.7	70.3	122.8	115.2	113.7	Natural increase
Zaključeni brakovi	87.9	136.4	135.9	74.4	90.9	125.4	101.7	110.6	Marriages
Razvedeni brakovi	76.4	196.8	79.5	67.0	101.5	106.5	35.2	65.2	Divorces
<b>ZAPOSLENOST I ZARADE</b>									<b>EMPLOYMENT AND EARNINGS</b>
Broj zaposlenih	106.3	102.9	101.3	100.3	100.5	105.2	105.5	103.1	Number of employees
Lica koja traže zaposlenje	85.8	95.0	95.2	100.7	102.0	92.9	93.5	95.6	Persons looking for employm.
Nominalne zarade bez poreza i doprinosa	123.1	104.9	102.7	101.9	108.0	118.5	113.0	100.1	Nominal wages without taxes and contributions
Realne zarade bez poreza i doprinosa	114.6	102.7	101.0	101.3	107.0	112.6	108.3	99.0	Real wages without taxes and contributions
<b>CIJENE</b>									<b>PRICES</b>
Indeks potrošačkih cijena	107.4	102.1	101.7	100.6	100.9	105.2	104.3	101.1	Consumer prices index
Hrana i bezalkoholna pića	108.2	102.2	100.0	101.8	101.6	105.7	104.2	100.8	Food and non alch. beverages
Odjeća i obuća	100.7	99.9	100.4	101.1	100.0	101.4	101.0	99.5	Clothes and footwear
Pokućstvo i oprema za kuću	100.8	100.1	100.4	100.5	99.9	100.8	98.8	98.1	Household furnishing
Cijene proizvođača ind.proizvoda	114.0	105.5	104.8	98.1	95.5	103.6	96.7	98.5	Produc. price ind. for ind.prod.
<b>INDUSTRIJA</b>									<b>INDUSTRY</b>
Indeksi fizičkog obima	98.0	83.6	110.1	98.1	95.7	86.4	71.9	83.2	Indices of physical scope
<b>GRAĐEVINARSTVO <sup>1)</sup></b>									<b>CONSTRUCTION <sup>1)</sup></b>
Vrijednost izvedenih građevinskih radova	145.7	168.7	104.1	92.5	50.1	90.9*	71.6	132.9	Value of performed construction works
Izvršeni efektivni časovi na gradilištu	120.7	116.7	104.0	94.9	72.0	88.2*	83.6	110.5	Performed effective hours at the construction site
<b>SPOLJNA TRGOVINA</b>									<b>EXTERNAL TRADE</b>
Izvoz	88.9	133.0	91.2	76.7	81.5	74.1	42.2	75.7	Export
Uvoz	121.9	132.3	103.2	75.1	64.2	66.7	59.2	117.1	Import
<b>UNUTRAŠNJA TRGOVINA</b>									<b>DOMESTIC TRADE</b>
Promet u trgovini na malo	116	136.3	122.2	78.8	78.0	100.6	87.3	118.3	Turnover in retail trade
<b>UGOSTITELJSTVO</b>	105.0	283.4	220.0	23.4	67.1	96.6	90.5	265.4	<b>CATERING</b>
<b>TURIZAM</b>									<b>TOURISM</b>
Posjete turista	106.4	349.9	355.5	10.6	21.6	85.7	94.9	387.1	Visits of tourists
Noćenja turista	110.3	430.3	440.1	10.3	14.2	83.6	92.7	477.4	Overnight stays of tourists
<b>SAOBRAĆAJ, SKLADIŠTENJE I VEZE</b>									<b>TRANSPORT, STORAGE AND COMMUNICATIONS</b>
Drumski-prevoz robe	149.3	109.3	79.5	93.7	112.7	91.7	127.6	152.0	Road - transport of goods
Prevoz putnika	87.3	101.0	132.5	78.0	68.6	71.8	110.4	155.5	Transport of passengers
Željeznički – prevoz robe	99.4	116.4	98.0	109.3	53.3	66.6	31.1	63.1	Railway - transport of goods
Prevoz putnika	113.6	135.5	147.5	60.0	72.2	86.7	85.2	133.3	Transport of passengers
Vazdušni – prevoz robe	112.9	66.0	71.5	121.0	71.1	40.6	63.0	102.4	Air – transport of goods
Prevoz putnika	108.2	212.2	167.3	31.2	77.1	85.5	79.7	197.9	Transport of passengers
Pomorski– Prevoz robe – t milje	86.3	100.4	274.6	35.9	78.1	77.3	64.2	83.4	Marine- transport of goods – t miles

<sup>1)</sup> Prethodni podaci za II kvartal<sup>1)</sup> Preliminary data

## OPŠTI PREGLED INDEKSA / SUMMARY OF INDICES

## Mjesečni indeksi / Monthly indices

	2008 2007	I-VII 2009 I-VII 2008	VII 2009 VI 2009	Ø 2008 = 100				
				VII	VIII	IX	X	XI
<b>STANOVNIŠTVO <sup>1)</sup></b>								
Živorodeni	105.4	100.0	115.7	108.9	106.2	121.2	106.1	105.8
Umrli	95.5	93.3	94.2	107.1	96.7	95.6	111.2	101.5
Prirodni priraštaj	141.8	125.1	160.6	112.7	126.4	175.2	95.4	115.0
Zaključeni brakovi	87.9	111.0	130.1	116.2	161.5	119.6	122.0	99.5
Razvedeni brakovi	76.4	69.7	223.5	93.6	62.4	180.3	104.0	69.4
<b>ZAPOSLENOST I ZARADE</b>								
Broj zaposlenih	106.3	105.4	99.9	101.6	101.4	100.9	101.4	101.7
Lica koja traže zaposlenje	85.8	93.3	99.7	97.1	95.3	95.8	97.1	97.1
Nominalne zarade bez poreza i doprinosa	123.1	114.8	98.1	100.0	102.4	103.1	101.7	102.9
Realne zarade bez poreza i doprinosa	114.6	104.5	98.7	99.3	101.5	101.2	99.8	101.6
<b>CIJENE</b>								
Indeks potrošačkih cijena	107.4	104.4	99.4	100.7	100.9	101.9	101.9	101.3
Hrana i bezalkoholna pića	108.2	104.7	99.2	99.1	100.0	101.2	101.2	101.7
Odjeća i obuća	100.7	101.2	100.0	99.5	99.7	100.6	100.8	101.0
Pokućstvo i oprema za kuću	100.8	99.5	99.7	99.8	100.2	100.4	100.5	100.5
Cijene proizvođača industrijskih proizv.	114.0	98.6	98.6	103.5	104.9	104.1	104.0	103.4
<b>ŠUMARSTVO</b>								
Indeksi fizičkog obima	107.6	93.4	99.0	116.9	162.5	200.5	219.4	119.6
<b>INDUSTRIJA</b>								
Indeksi fizičkog obima	98.0	76.2	87.7	93.5	96.3	112.0	93.9	105.8
<b>SPOLJNA TRGOVINA</b>								
Izvoz	88.9	61.1	123.6	115.7	106.6	103.0	88.6	95.0
Uvoz	121.9	60.5	101.2	125.5	108.1	114.1	96.7	75.4
<b>UNUTRAŠNJA TRGOVINA</b>								
Promet robe na malo	116.0			124.5	125.6	124.3	102.0	84.2
Prodaja i otkup proizvoda poljoprivrede, šumarstva i ribarstva	122.2	115.9	105.5	122.4	200.2	138.9	156.3	115.4
<b>UGOSTITELJSTVO</b>								
Promet u ugostiteljstvu	105.0	94.8	169.9	197.6	241.3	210.0	68.5	38.7
<b>TURIZAM</b>								
Posjete turista	106.4	95.5	268.4	310.6	368.4	138.3	34.2	17.7
Noćenja turista	110.3	93.5	266.2	308.1	421.2	138.1	26.9	14.6
<b>SAOBRAĆAJ, SKLADIŠT. I VEZE</b>								
Drumski – prevoz robe	149.3	116.2	117.6	90.8	94.0	91.2	86.1	86.0
Prevoz putnika	87.3	91.4	129.1	133.8	132.4	99.6	96.6	94.8
Željeznički – prevoz robe	99.4	49.1	91.2	97.9	106.4	96.5	110.7	112.6
Prevoz putnika	113.6	83.2	120.0	177.6	158.4	96.0	62.4	67.2
Vazdušni - prevoz putnika	108.2	85.1	134.9	188.0	208.4	151.1	69.3	51.5
Pomorski- prevoz robe – t milje	86.3	73.2	446.1	228.6	191.1	153.6	78.5	75.1

<sup>1)</sup> Prethodni podaci



OPŠTI PREGLED INDEKSA/ **SUMMARY OF INDICES**Mjesečni indeksi / *Monthly indices*

Ø 2008 = 100	2009							
XII	I	II	III	IV	V	VI	VII	
111.8	92.7	88.3	94.7	85.1	100.4	103.5	119.74	<b>POPULATION</b> <sup>1)</sup>
100.2	80.3	90.9	119.8	101.0	90.0	101.1	95.23	Liveborn
136.4	119.1	83.0	41.5	51.6	120.0	105.4	169.28	Deaths
74.3	89.3	91.0	88.6	82.1	119.3	96.1	125.08	Natural increase
52.0	52.0	65.9	111.0	20.8	69.4	59.0	131.79	Marriages
								Divorces
								<b>EMPLOYMENT AND EARNINGS</b>
101.8	101.9	102.1	102.6	103.8	104.8	107.6	107.5	Number of employees
96.2	98.0	99.3	98.8	97.0	94.1	91.9	91.6	Persons looking for employment
								Nominal wages without taxes
106.5	113.0	112.2	110.8	110.8	112.5	112.0	110.0	and contributions
								Real wages without taxes and
104.1	110.8	109.2	107.4	106.8	108.3	108.2	107.0	contributions
								<b>PRICES</b>
102.3	102.0	102.7	103.2	103.8	103.9	103.5	102.9	Consumer prices index
102.8	102.8	103.6	104.1	104.8	105.0	103.2	102.4	Food and non alch. beverages
101.1	101.2	100.9	100.9	100.7	100.6	100.4	100.4	Clothes and footwear
100.6	100.7	100.2	100.4	99.7	97.9	97.8	97.5	Household furnishing
99.2	98.1	98.1	96.6	96.8	96.3	95.3	93.9	Produc. price ind. for ind. prod.
								<b>FORESTRY</b>
49.9	8.1	27.5	16.6	67.7	87.1	106.4	105.3	Indices of physical scope
								<b>INDUSTRY</b>
96.4	92.9	95.7	94.5	76.0	64.1	57.0	50.0	Indices of physical scope
								<b>EXTERNAL TRADE</b>
66.0	83.2	54.3	54.6	39.1	33.2	73.1	90.4	Export
88.9	48.1	54.8	60.7	60.6	63.2	67.8	68.6	Import
								<b>INTERNAL TRADE</b>
108.6	74.1	76.5	75.2	887.5	86.2	93.6		Turnover of retail trade goods
								Sales and buy out of products in
102.1	77.3	63.5	64.2	73.7	71.0	104.5	110.3	agriculture, forestry and fishing
								<b>CATERING</b>
44.9	30.3	34.1	36.2	44.1	106.1	116.7	198.3	Turnover in catering
								<b>TOURISM</b>
35.1	17.5	19.9	18.9	30.0	76.1	115.3	309.5	Visits of tourists
48.2	12.6	13.2	12.2	19.0	55.3	114.2	303.9	Overnight stays of tourists
								<b>TRANSPORT, STORAGE AND COMMUNIC.</b>
86.6	75.0	108.3	108.3	101.6	194.7	147.1	143.2	Road - transport of goods
94.2	76.1	73.4	46.3	77.4	119.2	108.0	123.2	Transport of passengers
105.7	68.0	53.1	54.4	41.5	20.6	48.6	44.0	Railway - transport of goods
129.6	76.7	43.2	67.2	62.4	67.2	120.0	134.4	Transport of passengers
50.3	45.3	38.4	48.1	53.6	75.7	131.5	177.4	Air - transport of passengers
54.6	51.2	47.8	61.4	37.5	58.0	41.0	177.5	Marine- transport of goods – t miles

<sup>1)</sup> Preliminary data

**PRIRODNO KRETANJE STANOVNIŠTVA**  
**NATURAL POPULATION CHANGES**

**Crna Gora / Montenegro**

	Živorodeni <i>Live births</i>			Umrli <i>Deaths</i>			Vitalni indeks  <i>Vital index</i>	Prirodni priraštaj  <i>Natural increase</i>	Brakovi / <i>Marriages</i>	
	<i>ukupno</i> <i>Total</i>	<i>muško</i> <i>Male</i>	<i>žensko</i> <i>Female</i>	<i>ukupno</i> <i>Total</i>	<i>muško</i> <i>Male</i>	<i>žensko</i> <i>Female</i>			sklopljeni <i>New marriages</i>	razvedeni <i>Divorces</i>
2004	7849	4030	3819	5707	3011	2696	1.38	2142	3440	505
2005	7352	3883	3469	5839	3082	2757	1.26	1513	3291	499
2006	7531	3969	3562	5968	3092	2876	1.26	1563	3462	470
2007	7834	4136	3698	5979	3048	2931	1.31	1855	4005	453
2008	8258	4313	3945	5708	2982	2726	1.45	2550	3521	346 <sup>1)</sup>
Ø I - VII 2008	669	352	317	486	256	230	1.38	183	261	30
Ø I - VII 2009	669	362	308	453	229	224	1.48	216	290	21
2008										
VII	735	384	351	457	256	201	1.61	278	341	27
VIII	768	429	339	468	232	236	1.64	300	474	18
IX	748	390	358	459	244	215	1.63	289	351	52
X	719	364	355	471	251	220	1.53	248	358	30
XI	686	328	358	452	221	231	1.52	234	292	20
XII	653	337	316	455	244	211	1.44	198	218	15
2009 <sup>1)</sup>										
I	632	337	295	371	186	185	1.70	261	262	15
II	602	329	273	420	208	212	1.43	182	267	19
III	645	343	302	554	268	286	1.16	91	260	32
IV	580	321	259	467	219	248	1.24	113	241	6
V	691	385	306	428	222	206	1.61	263	350	20
VI	712	376	336	481	259	222	1.48	231	282	17
VII	824	440	384	453	244	209	1.82	371	367	38
<b>I-VII 2009/I-VII 2008</b>	100.0	102.7	97.1	93.3	89.7	97.2		118.0	111.0	69.7

+

<sup>1)</sup> Prethodni podaci<sup>1)</sup> Preliminary data

**PRIRODNO KRETANJE STANOVNIŠTVA PO OPŠTINAMA**  
**NATURAL POPULATION CHANGES BY MUNICIPALITY**  
**I – VII 2009. god.<sup>1)</sup>**

	Živorodeni / Live births			Umrli / Deaths			Vitalni indeks <i>Vital index</i>	Prirodni priraštaj <i>Natural increase</i>	Brakovi / Marriages	
	ukupno <i>Total</i>	muški <i>Male</i>	ženski <i>Female</i>	ukupno <i>Total</i>	muški <i>Male</i>	ženski <i>Female</i>			sklopljeni <i>New marriages</i>	razvedeni <i>Divorces</i>
<b>CRNA GORA MONTENEGRO</b>	<b>4686</b>	<b>2531</b>	<b>2155</b>	<b>3235</b>	<b>1636</b>	<b>1599</b>	<b>1.45</b>	<b>1451</b>	<b>2029</b>	<b>147</b>
ANDRIJEVICA	19	8	11	32	15	17	0.59	-13	8	0
BAR	312	166	146	220	115	105	1.42	92	157	22
BERANE	277	159	118	234	115	119	1.18	43	103	8
BIJELO POLJE	405	214	191	268	149	119	1.51	137	151	1
BUDVA	165	90	75	54	27	27	3.06	111	60	0
DANILOVGRAD	93	40	53	90	47	43	1.03	3	42	11
ŽABLJAK	18	9	9	22	9	13	0.82	-4	6	0
KOLAŠIN	40	15	25	67	28	39	0.60	-27	24	1
KOTOR	147	85	62	155	74	81	0.95	-8	54	9
MOJKOVAC	50	30	20	73	34	39	0.68	-23	22	0
NIKŠIĆ	434	269	165	421	214	207	1.03	13	206	15
PLAV	87	52	35	65	34	31	1.34	22	39	0
PLUŽINE	13	6	7	30	16	14	0.43	-17	10	0
PLJEVLJA	153	84	69	208	114	94	0.74	-55	73	16
PODGORICA	1652	868	784	771	374	397	2.14	881	706	22
ROŽAJE	277	140	137	70	40	30	3.96	207	109	20
TIVAT	104	51	53	76	40	36	1.37	28	32	2
ULCINJ	138	81	57	104	60	44	1.33	34	62	3
HERCEG NOVI	195	108	87	154	66	88	1.27	41	82	17
CETINJE	95	49	46	102	58	44	0.93	-7	73	0
ŠAVNIK	12	7	5	19	7	12	0.63	-7	10	0

<sup>1)</sup> Prethodni podaci<sup>1)</sup> Preliminary data

**KRETANJE STANOVNIŠTVA UNUTAR CRNE GORE PO OPŠTINAMA**  
**MIGRATIONS INSIDE MONTENEGRO BY MUNICIPALITY**

**I – VII 2009. god.<sup>1)</sup>**

<b>OPŠTINE / MUNICIPALITIES</b>	<b>DOSELJENI / MOVED IN</b>	<b>ODSELJENI / MOVED OUT OF</b>	<b>SALDO / BALLANCE</b>
<b>UKUPNO / TOTAL</b>	2164	2164	0
ANDRIJEVICA	27	42	-15
BAR	276	135	141
BERANE	106	208	-102
BIJELO POLJE	78	293	-215
BUDVA	185	63	122
DANILOVGRAD	96	73	23
ŽABLJAK	18	35	-17
KOLAŠIN	12	62	-50
KOTOR	58	88	-30
MOJKOVAC	34	63	-29
NIKŠIĆ	125	249	-124
PLAV	19	62	-43
PLUŽINE	7	52	-45
PLJEVLJA	25	111	-86
PODGORICA	767	286	481
ROŽAJE	22	99	-77
TIVAT	71	41	30
ULCINJ	85	18	67
HERCEG NOVI	108	68	40
CETINJE	40	75	-35
ŠAVNIK	5	41	-36

<sup>1)</sup> Prethodni podaci

<sup>1)</sup> Preliminary data

**ZAPOSLENI PO SEKTORIMA DJELATNOSTI**  
**EMPLOYEES BY ACTIVITY SECTORS**

	Ukupno <i>Total</i>	PO SEKTORIMA / BY ACTIVITY SECTORS						
		poljoprivreda šumarstvo i vodoprivreda <i>Agriculture, forestry and water supply</i>	ribarstvo <i>Fishing</i>	vadenje ruda i kamena <i>Mining and quarrying</i>	prerađivačka industrija <i>Manufacturing</i>	proizvodnja elekt. energije <i>Electricity supply</i>	građevinarstvo <i>Construc- tion</i>	trgovina na veliko i malo, opravka <i>Wholesale and retail trade, repair</i>
Ø 2006	150800	2607	115	4159	26065	5627	6853	29602
Ø 2007	156408	2586	112	3753	25697	5594	6647	30750
Ø 2008	166221	2651	129	3721	24335	6042	8831	31854
Ø I - VII 2008	164517	2622	128	3710	24493	5987	8368	31713
Ø I - VII 2009	173401	2684	122	3252	22749	5618	10041	34776
2008								
VII	168916	2678	129	3726	24237	6129	9143	32141
VIII	168488	2681	129	3726	24250	6119	9161	32005
IX	167722	2681	129	3726	24062	6109	9211	32029
X	168583	2681	129	3726	24089	6085	9693	32158
XI	169079	2681	129	3726	24405	6125	9653	32149
XII	169160	2731	129	3776	23763	6159	9678	31917
2009								
I	169305	2724	129	3626	23440	6153	9569	32147
II	169670	2889	129	3478	23231	5736	9990	32601
III	170607	2617	125	3182	22944	5511	9303	35153
IV	172549	2617	123	3162	22835	5501	9915	35517
V	174218	2657	123	3115	22412	5353	10489	35693
VI	178839	2654	113	3103	22449	5523	10687	36180
VII	178622	2630	115	3097	21929	5552	10340	36139
<b>I-VII 2009/I-VII 2008</b>	<b>105.4</b>	<b>102.4</b>	<b>95.3</b>	<b>87.6</b>	<b>92.9</b>	<b>93.8</b>	<b>120.0</b>	<b>109.7</b>

*/nastavak/* */ continued /*

	PO SEKTORIMA / BY ACTIVITY SECTORS							
	hoteli i restorani <i>Hotels and restaurants</i>	saobraćaj, skladištenje i veze <i>Transport, storage and communi-cations</i>	finansijsko posredovnje <i>Financial activities</i>	aktivnosti u vezi s nekretninama <i>Real estate activities, renting</i>	državna uprava i obav. socijalno osiguranje <i>Public administration and social insurance</i>	obrazo- vanje <i>Education</i>	zdravstveno i socijalno osiguranje <i>Health and social work</i>	ostale komu- nalne, društ. i lične usluge <i>Other community, social &amp; pers. service activities</i>
Ø 2006	10928	12133	3114	5905	10345	12846	12012	8489
Ø 2007	11307	11358	3143	5354	17575	12687	12004	7841
Ø 2008	14641	12798	3476	5631	18643	12892	12356	8221
Ø I - VII 2008	13988	12545	3456	5530	18584	12938	12288	8167
Ø I - VII 2009	16949	14154	3602	6723	18814	13031	12233	8653
2008								
VII	16200	13037	3477	5643	18766	12766	12377	8257
VIII	16178	12960	3478	5640	18749	12784	12408	8220
IX	15628	12945	3478	5640	18674	12795	12397	8218
X	15278	13117	3493	5840	18705	12815	12480	8294
XI	15188	13293	3518	5840	18781	12850	12440	8301
XII	15507	13448	3558	5905	18732	12892	12529	8436
2009								
I	15432	13638	3603	5966	18764	12969	12606	8539
II	16046	13908	3426	6139	18717	13108	12118	8154
III	14796	13923	3623	6670	18837	13069	12142	8712
IV	15600	14069	3603	6799	18804	13070	12184	8750
V	16861	14274	3594	6759	18906	13092	12164	8726
VI	19862	14767	3644	7017	18824	12993	12213	8810
VII	20049	14497	3718	7709	18845	12919	12205	8878
<b>I-VII 2009/I-VII 2008</b>	<b>121.2</b>	<b>112.8</b>	<b>104.2</b>	<b>121.6</b>	<b>101.2</b>	<b>100.7</b>	<b>99.6</b>	<b>105.9</b>

## ZAPOSLENI PO OPŠTINAMA / EMPLOYEES BY MUNICIPALITY

	Opštine / Municipalities										
	Andrijevica	Bar	Berane	Bijelo Polje	Budva	Danilovgrad	Žabljak	Kolašin	Kotor	Mojkovac	Nikšić
Ø 2006	540	11105	5218	7316	9308	2541	805	1410	5547	1495	17616
Ø 2007	528	11125	5803	8060	8323	2496	937	1591	5983	1503	17481
Ø 2008	537	11876	6092	8628	8951	2969	986	1728	6378	1638	18312
Ø I - VII 2008	538	11839	6093	8534	8821	2918	972	1686	6330	1599	18131
Ø I - VII 2009	536	12306	6116	8750	10299	3118	1003	1846	6664	1715	18761
2008											
VII	530	12280	6108	8697	9822	2998	981	1745	6493	1665	18376
VIII	532	12165	6145	8646	9725	2999	1016	1748	6482	1668	18345
IX	533	11839	6060	8826	9459	3031	1002	1768	6327	1666	18366
X	533	11886	6057	8745	8940	3054	990	1799	6458	1678	18653
XI	537	11898	6113	8801	8764	3065	986	1809	6479	1720	18804
XII	536	11856	6077	8780	8775	3049	1039	1810	6486	1725	18656
2009											
I	534	11879	6088	8850	8674	3082	1034	1842	6470	1720	18761
II	536	11911	6120	8852	8958	3086	983	1847	6451	1681	18684
III	536	11933	6151	8790	9205	3094	1004	1831	6495	1652	18803
IV	533	12251	6156	8868	9920	3120	987	1836	6546	1701	18907
V	537	12221	6131	8704	10546	3111	1004	1845	6690	1692	18679
VI	537	13056	6083	8544	12459	3148	1003	1857	7011	1781	18758
VII	537	12892	6086	8639	12334	3182	1007	1865	6983	1777	18738
I-VII 2009/I-VII 2008	99.6	103.9	100.4	102.5	116.8	106.8	103.2	109.5	105.3	107.3	103.5

/nastavak/

/ continued /

	Opštine / Municipalities									
	Plav	Plužine	Pljevlja	Podgorica	Rožaje	Tivat	Ulcinj	Herceg Novi	Cetinje	Šavnik
Ø 2006	1470	913	7233	53103	3292	2940	3994	10130	4545	279
Ø 2007	1425	952	7100	56118	3148	3632	3873	11149	4890	291
Ø 2008	1411	938	7286	61032	3064	3755	4185	11763	4396	296
Ø I - VII 2008	1427	927	7260	60115	3026	3680	4135	11649	4544	293
Ø I - VII 2009	1387	934	7310	64317	3192	4068	4384	12225	4182	288
2008										
VII	1399	961	7300	61336	3123	4009	4357	12245	4173	318
VIII	1397	958	7306	61350	3105	3970	4279	12150	4183	319
IX	1407	963	7338	61228	3116	3922	4205	12175	4179	312
X	1384	943	7312	62668	3118	3797	4255	11852	4160	301
XI	1380	965	7357	63058	3121	3808	4275	11672	4187	280
XII	1375	937	7298	63282	3125	3808	4262	11766	4234	284
2009										
I	1375	939	7264	63343	3133	3833	4273	11720	4204	287
II	1337	938	7317	63499	3158	3886	4310	11734	4099	283
III	1447	927	7321	63888	3164	3846	4248	11777	4216	279
IV	1394	927	7293	64364	3210	4020	4299	11870	4063	284
V	1377	945	7358	64800	3243	4213	4353	12271	4211	287
VI	1387	948	7310	64996	3244	4279	4709	13204	4241	284
VII	1389	916	7307	65329	3193	4402	4498	12996	4238	314
I-VII 2009/I-VII 2008	97.2	100.8	100.7	107.0	105.5	110.6	106.0	104.9	92.0	98.3

NEZAPOSLENA LICA<sup>1)</sup> / UNEMPLOYED PERSONS<sup>1)</sup>

	Stanje krajem perioda / Situation at the end of the period					U toku perioda / In the middle of the period			
	lica koja traže zaposlenje <sup>2)</sup> ukupno <i>Persons looking for job Total</i>	nezaposlena lica koja prvi put traže zaposlenje <i>Unemployed persons first time looking for job</i>	nezaposlena lica bez kvalifikacija <i>Unqualified unemployed persons</i>	lica koja primaju novčanu naknadu <sup>3)</sup> <i>Persons receiving unemployment benefits</i>	nezaposlene žene <i>unemployed women</i>		prijavilo se za zapošljavanje <sup>4)</sup> <i>Reported for employment</i>	zaposleni prema evidenciji Zavoda za zapošljavanje Crne Gore <i>Employees according to the records of Employment Agency of Montenegro</i>	prestanak vođenja evidencije <sup>5)</sup> <i>Records stopped to be kept</i>
					Svega <i>Total</i>	bez kvalifikacija <i>Unqualified</i>			
Ø 2006	43190	14855	11550	7833	19949	4720	2630	1955	3581
Ø 2007	34396	10069	8838	8654	15513	3414	2187	2658	2911
Ø 2008	29514	7375	7823	9507	13193	2925	2090	2261	2386
Ø I - VI 2008	30572	7875	8037	9538	13521	2947	2043	2484	2541
Ø I - VI 2009	28488	6438	7648	12411	12661	2872	2007	1378	2262
<b>Ø I - VII 2008</b>	30298	7750	7997	9179	13424	2946	2018	2626	2502
<b>Ø I - VII 2009</b>	28283	6377	7552	12428	12567	2824	1994	1396	2227
2007									
VI	33393	9885	8636	8260	14912	3279	1687	4434	3841
VII	32205	9350	8196	8530	14426	3117	2114	3698	3529
VIII	31271	8931	7897	9433	14124	2990	1644	2063	2629
IX	31156	8737	7840	8592	14080	2961	2328	2289	2568
X	31569	8673	7994	8917	14253	3020	2961	2679	2591
XI	31787	8579	8021	9203	14279	3022	2616	2808	2465
XII	31469	8388	7994	9206	14017	2966	1722	2266	2235
2008									
V	30021	7739	8149	9630	13276	3034	2639	2366	2847
VI	29088	7444	7966	9416	12922	2998	1787	3147	2776
VII	28660	6997	7758	7024	12840	2939	1868	3482	2272
VIII	28117	6789	7505	9826	12721	2830	1457	2465	2028
IX	28276	6976	7510	8877	12892	2883	2519	2389	2318
X	28666	6943	7593	10125	13064	2894	2855	1489	2435
XI	28645	6885	7629	10537	12913	2932	2136	1421	2156
XII	28378	6664	7659	10474	12758	2934	1900	985	2175
2009									
I	28921	6624	7839	11983	12962	3007	2123	720	1684
II	29305	6724	7952	13133	13079	3041	2290	1179	1922
III	29170	6733	7870	12294	12905	2932	2447	1345	2636
IV	28616	6500	7650	12144	12678	2868	1753	1456	2277
V	27785	6115	7444	12265	12306	2748	1624	1616	2507
VI	27133	5929	7135	12644	12038	2638	1807	1950	2545
VII	27048	6012	6973	12530	12000	2535	1915	1504	2021
I-VI 2009/I-VI 2008	93.2	81.7	95.2	130.1	93.6	97.5	98.3	55.5	89.0
<b>I-VII 2009/I-VII 2008</b>	93.3	82.3	94.4	135.4	93.6	95.9	98.8	53.2	89.0

<sup>1)</sup> SOURCE: Employment Agency of Montenegro<sup>1)</sup> IZVOR: Zavod za zapošljavanje Crne Gore<sup>2)</sup> Shodno članu 4 Zakona o zapošljavanju („Sl.list RCG”, br. 5/02 )<sup>3)</sup> Shodno članu 48 Zakona o zapošljavanju<sup>4)</sup> Nezaposlene osobe koje su se tokom izvještajnog mjeseca prijavile na evidenciju Zavoda za zapošljavanje<sup>5)</sup> Shodno članu 86 Zakona o zapošljavanju<sup>2)</sup> According to the article 4 of the Law on Employment („Official Gazzete of RoM”, No. 5/02 and 79/04)<sup>3)</sup> According to the Article 48 of the Law on Employment<sup>4)</sup> Unemployed persons who in the reference month reported to the records of the Employment Agency of Montenegro<sup>5)</sup> According to the Article 86 of the Law on Employment

**PROSJEČNE ZARADE PO SEKTORIMA DJELATNOSTI**  
**AVERAGE WAGES BY ACTIVITY SECTORS**

u EUR

in EUR

	Ukupno <i>Total</i>	PO SEKTORIMA / BY ACTIVITY SECTORS						
		poljop. šumarstvo i vodoprivreda <i>Agriculture, forestry and water supply</i>	ribarstvo <i>Fishing</i>	vadenje ruda i kamena <i>Mining and quarrying</i>	prerađivačka industrija <i>Manufacturing</i>	proizvodnja električne energije <i>Electricity supply</i>	građevinarstvo <i>Construc- tion</i>	trgovina na veliko i malo, opravka <i>Wholesale and retail trade, repair</i>
Ø 2007	497	446	196	725	530	701	430	301
Ø 2008	609	584	197	833	615	783	519	345
Ø I - VII 2008	593	551	193	802	598	759	505	331
Ø I - VII 2009	647	654	214	782	615	821	562	377
2008								
VII	610	590	226	822	617	806	552	347
VIII	625	601	211	900	605	835	564	356
IX	630	592	199	906	673	792	527	360
X	621	642	195	879	617	825	539	354
XI	629	626	214	881	660	838	517	356
XII	651	667	198	835	662	791	546	390
2009								
I	655	659	226	851	672	814	527	364
II	650	591	187	758	645	916	598	378
III	642	667	192	762	602	784	577	371
IV	647	641	276	824	555	700	594	391
V	651	674	209	780	618	793	572	379
VI	648	685	201	775	608	801	520	376
VII	636	665	184	718	597	895	550	379
<b>I-VII 2009/I-VII 2008</b>	<b>109.1</b>	<b>118.7</b>	<b>110.9</b>	<b>97.5</b>	<b>102.8</b>	<b>108.2</b>	<b>111.3</b>	<b>113.9</b>

/nastavak/

/ continued /

	PO SEKTORIMA / BY ACTIVITY SECTORS							
	hoteli i restorani <i>Hotels and restaurants</i>	saobraćaj, skladišt. i veze <i>Transport, storage and communi- cations</i>	financijsko posredovanje <i>Financial activities</i>	aktivnosti u vezi s nekretninama <i>Real estate activities, renting</i>	državna uprava i obav. socijalno osiguranje <i>Public administration and social insurance</i>	obrazo- vanje <i>Education</i>	zdravstveno i socijalno osiguranje <i>Health and social work</i>	ostale komunalne, društvene i lične usluge <i>Other community, social &amp; personal service activities</i>
Ø 2007	388	659	1156	438	506	433	427	431
Ø 2008	445	757	1268	531	669	570	576	532
Ø I - VII 2008	431	730	1275	508	655	569	537	515
Ø I - VII 2009	471	848	1260	577	681	594	652	567
2008								
VII	448	792	1280	566	684	565	547	523
VIII	481	799	1227	544	699	562	629	538
IX	442	794	1259	544	678	566	640	540
X	436	787	1219	535	683	575	622	556
XI	461	753	1223	572	685	575	628	572
XII	496	831	1364	625	697	575	628	573
2009								
I	447	861	1247	558	687	584	638	567
II	450	798	1189	553	676	593	641	577
III	476	798	1251	573	688	600	646	589
IV	470	872	1297	581	676	599	647	575
V	518	900	1305	587	684	600	664	545
VI	472	895	1341	597	685	594	674	551
VII	461	830	1201	587	675	591	658	561
<b>I-VII 2009/I-VII 2008</b>	<b>109.3</b>	<b>116.2</b>	<b>98.8</b>	<b>113.6</b>	<b>104.0</b>	<b>104.4</b>	<b>121.4</b>	<b>110.1</b>



**PROSJEČNE ZARADE BEZ POREZA I DOPRINOSA PO SEKTORIMA DJELATNOSTI**  
**AVERAGE WAGES WITHOUT TAXES AND CONTRIBUTIONS BY ACTIVITY SECTOR**

<b>u EUR</b>	<b>in EUR</b>							
	Ukupno <i>Total</i>	PO SEKTORIMA / <i>BY ACTIVITY SECTORS</i>						
		poljoprivreda, šumarstvo i vodoprivreda <i>Agriculture, forestry and water supply</i>	ribarstvo <i>Fishing</i>	vađenje ruda i kamena <i>Mining and quarrying</i>	prerađivačka industrija <i>Manufacturing</i>	proizvodnja elekt. energije <i>Electricity supply</i>	građevni- narstvo <i>Construction</i>	trgovina na veliko i malo, opravka <i>Wholesale and retail trade, repair</i>
Ø 2007	338	305	140	493	358	469	295	208
Ø 2008	416	398	141	574	418	530	353	242
Ø I - VII 2008	405	375	138	552	407	514	344	233
Ø I - VII 2009	465	464	159	562	443	588	405	274
2008								
VII	416	401	162	566	419	546	376	244
VIII	426	409	150	620	410	565	382	250
IX	429	404	142	623	457	536	357	253
X	423	438	140	606	419	558	364	248
XI	428	428	154	608	449	565	349	249
XII	443	456	142	577	450	532	369	273
2009								
I	470	459	165	614	483	582	379	263
II	467	419	139	544	464	654	431	274
III	461	475	143	548	433	561	416	269
IV	465	457	205	593	400	502	428	284
V	468	480	156	561	445	569	413	275
VI	466	487	150	557	438	574	376	273
VII	457	474	138	515	430	641	397	275
<b>I-VII 2009/I-VII 2008</b>	<b>114.8</b>	<b>123.7</b>	<b>115.2</b>	<b>101.8</b>	<b>108.8</b>	<b>114.4</b>	<b>117.7</b>	<b>117.6</b>

/nastavak/

/ continued /

	PO SEKTORIMA / <i>BY ACTIVITY SECTORS</i>							
	hoteli i restorani <i>Hotels and resta- urants</i>	saobraćaj, skladištenje i veze <i>Transport, storage and communica- tions</i>	finansijsko posredovanje <i>Financial activities</i>	aktivnosti u vezi s nekretninama <i>Real estate activities, renting</i>	državna uprava i obav. socijalno osiguranje <i>Public administration and social insurance</i>	obrazovanje <i>Education</i>	zdravstveno i socijalno osiguranje <i>Health and social work</i>	ostale komunalne, društvene i lične usluge <i>Other community, social &amp; personal service activities</i>
Ø 2007	264	439	770	299	344	295	296	296
Ø 2008	307	513	854	363	454	388	395	370
Ø I - VII 2008	297	495	858	348	445	388	369	358
Ø I - VII 2009	341	606	899	416	489	428	471	408
2008								
VII	309	537	861	387	464	384	376	364
VIII	333	540	828	371	473	381	432	373
IX	306	537	850	371	458	383	439	374
X	301	533	824	365	461	390	427	385
XI	318	510	825	390	463	390	432	396
XII	342	563	920	426	471	390	432	397
2009								
I	322	612	888	402	493	419	459	406
II	326	570	849	399	485	427	463	415
III	345	570	894	414	494	432	468	424
IV	340	623	926	419	486	431	468	413
V	375	644	930	424	492	432	479	392
VI	342	641	956	432	492	427	487	397
VII	334	594	858	424	485	425	475	405
<b>I-VII 2009/I-VII 2008</b>	<b>114.8</b>	<b>122.4</b>	<b>104.8</b>	<b>119.5</b>	<b>109.9</b>	<b>110.3</b>	<b>127.6</b>	<b>114.0</b>

**INDEKSI PROSJEČNIH ZARADA PO SEKTORIMA DJELATNOSTI**  
**INDICES OF AVERAGE WAGES BY ACTIVITY SECTOR**

Ø 2008=100

	Ukupno <i>Total</i>	PO SEKTORIMA / <i>BY ACTIVITY SECTORS</i>						
		poljoprivreda, šumarstvo i vodoprivreda <i>Agriculture, forestry and water supply</i>	ribarstvo <i>Fishing</i>	vađenje ruda i kamen <i>Mining and quarrying</i>	prerađivačka industrija <i>Manufacturing</i>	proizvodnja električne energije <i>Electricity supply</i>	građevinarstvo <i>Construction</i>	trgovina na veliko i malo, opravka <i>Wholesale and retail trade, repair</i>
Ø 2007	81.6	76.4	99.5	87.0	86.2	89.5	82.9	87.2
Ø 2008	100.0	100.0	100.0	100.0	100.0	100.0	100.0	100.0
Ø I - VII 2008	97.4	94.3	98.0	96.3	97.2	96.9	97.3	95.9
Ø I - VII 2009	106.2	112.0	108.6	93.9	100.0	104.9	108.3	109.3
2008								
VII	100.2	101.0	114.7	98.7	100.3	102.9	106.4	100.6
VIII	102.6	102.9	107.1	108.0	98.4	106.6	108.7	103.2
IX	103.4	101.4	101.0	108.8	109.4	101.1	101.5	104.3
X	102.0	109.9	99.0	105.5	100.3	105.4	103.9	102.6
XI	103.3	107.2	108.6	105.8	107.3	107.0	99.6	103.2
XII	106.9	114.2	100.5	100.2	107.6	101.0	105.2	113.0
2009								
I	107.6	112.8	114.7	102.2	109.3	104.0	101.5	105.5
II	106.7	101.2	99.0	91.0	104.9	117.0	115.2	109.6
III	105.4	114.2	97.5	91.5	97.9	100.1	111.2	107.5
IV	106.2	109.8	140.1	98.9	90.2	89.4	114.5	113.3
V	106.9	115.4	106.1	93.6	100.5	101.3	110.2	109.9
VI	106.4	117.3	102.0	93.0	98.9	102.3	100.2	109.0
VII	104.4	113.9	93.4	86.2	97.1	114.3	106.0	109.9
I-VII 2009/I-VII 2008	109.1	118.7	110.9	97.5	102.8	108.2	111.3	113.9

/nastavak/

/ continued /

	PO SEKTORIMA / <i>BY ACTIVITY SECTORS</i>							
	hoteli i restorani <i>Hotels and restaurants</i>	saobraćaj, skladištenje i veze <i>Transport, storage and communications</i>	finansijsko posredovanje <i>Financial activities</i>	aktivnosti u vezi s nekretninama <i>Real estate activities, renting</i>	državna uprava i obav. socijalno osiguranje <i>Public administration and social insurance</i>	obrazo- vanje <i>Education</i>	zdravstveno i socijalno osiguranje <i>Health and social work</i>	ostale komunalne, društvene i lične usluge <i>Other community, social &amp; personal service activities</i>
Ø 2007	87.2	87.1	91.2	82.5	75.6	76.0	74.1	81.0
Ø 2008	100.0	100.0	100.0	100.0	100.0	100.0	100.0	100.0
Ø I - VII 2008	96.9	96.4	100.6	95.7	97.9	99.8	93.2	96.8
Ø I - VII 2009	105.8	112.0	99.4	108.7	101.8	104.2	113.2	106.6
2008								
VII	100.7	104.6	100.9	106.6	102.2	99.1	95.0	98.3
VIII	108.1	105.5	96.8	102.4	104.5	98.6	109.2	101.1
IX	99.3	104.9	99.3	102.4	101.3	99.3	111.1	101.5
X	98.0	104.0	96.1	100.8	102.1	100.9	108.0	104.5
XI	103.6	99.5	96.5	107.7	102.4	100.9	109.0	107.5
XII	111.5	109.8	107.6	117.7	104.2	100.9	109.0	107.7
2009								
I	100.4	113.7	98.3	105.1	102.7	102.5	110.8	106.6
II	101.1	105.4	93.8	104.1	101.0	104.0	111.3	108.5
III	107.0	105.4	98.7	107.9	102.8	105.3	112.2	110.7
IV	105.6	115.2	102.3	109.4	101.0	105.1	112.3	108.1
V	116.4	118.9	102.9	110.5	102.2	105.3	115.3	102.4
VI	106.1	118.2	105.8	112.4	102.4	104.2	117.0	103.6
VII	103.6	109.6	94.7	110.5	100.9	103.7	114.2	105.5
I-VII 2009/I-VII 2008	109.3	116.2	98.8	113.6	104.0	104.4	121.4	110.1

**INDEKSI PROSJEČNIH ZARADA BEZ POREZA I DOPRINOSA PO SEKTORIMA DJELATNOSTI**  
**INDICES OF AVERAGE WAGES WITHOUT TAXES AND CONTRIBUTIONS BY ACTIVITY SECTOR**

Ø 2008=100

	Ukupno <i>Total</i>	PO SEKTORIMA / BY ACTIVITY SECTORS						
		poljoprivreda, šumarstvo i vodoprivreda <i>Agriculture, forestry and water supply</i>	ribarstvo <i>Fishing</i>	vađenje ruda i kamenarstvo <i>Mining and quarrying</i>	prerađivačka industrija <i>Manufacturing</i>	proizvodnja električne energije <i>Electricity supply</i>	građevinarstvo <i>Construction</i>	trgovina na veliko i malo opravka <i>Wholesale and retail trade, repair</i>
Ø 2007	81.3	76.6	99.3	85.9	85.6	88.5	83.6	86.0
Ø 2008	100.0	100.0	100.0	100.0	100.0	100.0	100.0	100.0
Ø I - VII 2008	97.3	94.2	97.9	96.2	97.4	97.0	97.5	96.3
Ø I - VII 2009	111.8	116.6	112.8	97.9	106.0	110.9	114.7	113.2
2008								
VII	100.0	100.8	114.9	98.6	100.2	103.0	106.5	100.8
VIII	102.4	102.8	106.4	108.0	98.1	106.6	108.2	103.3
IX	103.1	101.5	100.7	108.5	109.3	101.1	101.1	104.5
X	101.7	110.1	99.3	105.6	100.2	105.3	103.1	102.5
XI	102.9	107.5	109.2	105.9	107.4	106.6	98.9	102.9
XII	106.5	114.6	100.7	100.5	107.7	100.4	104.5	112.8
2009								
I	113.0	115.3	117.0	107.0	115.6	109.8	107.4	108.7
II	112.3	105.3	98.6	94.8	111.0	123.4	122.1	113.2
III	110.8	119.3	101.4	95.5	103.6	105.9	117.8	111.2
IV	111.8	114.8	145.4	103.3	95.7	94.7	121.2	117.4
V	112.5	120.6	110.6	97.7	106.5	107.4	117.0	113.6
VI	112.0	122.4	106.4	94.0	104.8	108.3	106.5	112.8
VII	109.9	119.1	97.9	89.7	102.9	120.9	112.5	113.6
I-VII 2009/I-VII 2008	114.8	123.7	115.2	101.8	108.8	114.4	117.7	117.6

/nastavak/

/ continued /

	PO SEKTORIMA / BY ACTIVITY SECTORS							
	hoteli i restorani <i>Hotels and restaurants</i>	saobraćaj, skladištenje i veze <i>Transport, storage and communications</i>	financijsko posred. <i>Financial activities</i>	aktivnosti u vezi s nekretninama <i>Real estate activities, renting</i>	državna uprava i obav. socijalno osiguranje <i>Public administration and social insurance</i>	obrazovanje <i>Education</i>	zdravstveno i socijalno osiguranje <i>Health and social work</i>	ostale komunalne, društvene i lične usluge <i>Other community, social &amp; personal service activities</i>
Ø 2007	86.0	85.6	90.2	82.4	75.8	76.0	74.9	80.0
Ø 2008	100.0	100.0	100.0	100.0	100.0	100.0	100.0	100.0
Ø I - VII 2008	96.7	96.5	100.5	95.9	98.0	100.0	93.4	96.8
Ø I - VII 2009	111.1	118.1	105.3	114.6	107.7	110.3	119.2	110.3
2008								
VII	100.7	104.7	100.8	106.6	102.2	99.0	95.2	98.4
VIII	108.5	105.3	97.0	102.2	104.2	98.2	109.4	100.8
IX	99.7	104.7	99.5	102.2	100.9	98.7	111.1	101.1
X	98.0	103.9	96.5	100.6	101.5	100.5	108.1	104.1
XI	103.6	99.4	96.6	107.4	102.0	100.5	109.4	107.0
XII	111.4	109.7	107.7	117.4	103.7	100.5	109.4	107.3
2009								
I	104.9	119.3	104.0	110.7	108.6	108.0	116.2	109.7
II	106.2	111.1	99.4	109.9	106.8	110.1	117.2	112.2
III	112.4	111.1	104.7	114.1	108.8	111.3	118.5	114.6
IV	99.0	121.4	108.4	115.4	107.0	111.1	118.5	111.6
V	122.1	125.5	108.9	116.8	108.4	111.3	121.3	105.9
VI	111.4	125.0	111.9	119.0	108.4	110.1	123.3	107.3
VII	108.8	115.8	100.5	116.8	106.8	109.5	120.3	109.5
I-VII 2009/I-VII 2008	114.8	122.4	104.8	119.5	109.9	110.3	127.6	114.0

## PROSJEČNE ZARADE PO OPŠTINAMA / AVERAGE WAGES BY MUNICIPALITY

u EUR	Opštine / Municipalities											in EUR
	Andrijevica	Bar	Berane	Bijelo Polje	Budva	Danilovgrad	Žabljak	Kolašin	Kotor	Mojkovac	Nikšić	
Ø 2007	398	445	407	406	536	419	398	437	498	422	555	
Ø 2008	492	545	531	517	642	514	539	552	612	530	642	
Ø I - VII 2008	482	529	511	506	640	497	552	532	589	522	633	
Ø I - VII 2009	529	566	564	535	653	543	569	613	677	567	620	
2008												
VII	492	525	527	516	605	531	594	576	606	610	636	
VIII	506	577	565	520	650	532	544	603	620	534	656	
IX	492	574	551	535	607	530	551	538	637	518	669	
X	505	558	545	528	606	532	499	557	635	529	649	
XI	504	555	563	523	655	530	498	615	642	552	661	
XII	520	575	572	547	721	559	533	596	669	543	631	
2009												
I	518	561	582	546	627	579	610	598	666	559	648	
II	556	565	555	555	687	553	570	570	669	583	670	
III	516	587	574	519	701	522	561	605	687	541	602	
IV	523	574	550	525	676	578	508	616	698	533	624	
V	525	562	573	529	681	546	586	595	681	558	589	
VI	534	561	566	534	603	536	605	639	678	642	606	
VII	531	553	550	534	616	496	556	656	662	573	610	
I-VII 2009/I-VII 2008	109.8	107.0	110.4	105.7	102.0	109.3	103.1	115.2	114.9	108.6	97.9	

/nastavak/

/continued/

	Opštine / Municipalities									
	Plav	Plužine	Pljevlja	Podgorica	Rožaje	Tivat	Ulcinj	Herceg Novi	Cetinje	Šavnik
Ø 2007	376	444	492	548	456	486	354	408	366	420
Ø 2008	493	549	614	676	561	575	460	499	442	526
Ø I - VII 2008	468	515	592	660	548	571	421	480	409	508
Ø I - VII 2009	529	639	675	729	606	636	483	516	577	538
2008										
VII	515	504	616	694	554	571	452	481	415	520
VIII	538	532	628	688	574	572	667	515	409	529
IX	525	688	640	709	572	575	468	510	413	544
X	521	534	656	682	570	563	464	523	584	544
XI	527	707	641	688	577	586	462	521	583	548
XII	546	629	660	725	591	598	467	546	592	591
2009										
I	504	613	648	753	597	641	490	510	582	550
II	571	584	651	725	595	624	488	500	578	552
III	551	717	695	713	609	656	494	500	580	535
IV	526	599	706	724	609	626	455	521	573	520
V	518	794	683	732	608	678	481	560	585	538
VI	518	590	692	733	619	631	488	525	583	542
VII	519	655	660	726	610	605	481	500	557	530
I-VII 2009/I-VII 2008	113.0	124.1	114.0	110.5	110.6	111.4	114.7	107.5	141.1	105.9

**PROSJEČNE ZARADE BEZ POREZA I DOPRINOSA PO OPŠTINAMA**  
**AVERAGE WAGES WITHOUT TAXES AND CONTRIBUTIONS BY ACTIVITY SECTOR**

<b>u EUR</b>	<b>in EUR</b>										
	Opštine / Municipalities										
	Andrijevica	Bar	Berane	Bijelo Polje	Budva	Danilovgrad	Žabljak	Kolašin	Kotor	Mojkovac	Nikšić
Ø 2007	271	302	278	277	361	285	272	296	339	288	377
Ø 2008	336	371	361	353	439	352	368	376	419	361	439
Ø I - VII 2008	330	360	348	345	437	342	377	362	404	355	433
Ø I - VII 2009	380	407	407	385	469	390	411	441	489	408	447
2008											
VII	334	359	358	352	419	369	405	390	415	414	434
VIII	344	393	382	355	444	357	371	408	427	365	449
IX	335	390	378	362	417	362	375	366	433	352	457
X	343	380	369	359	417	363	341	378	433	360	444
XI	344	377	382	356	447	363	341	417	438	376	450
XII	354	392	389	374	492	383	362	405	456	371	433
2009											
I	371	398	415	390	446	410	438	428	479	400	466
II	399	407	399	399	493	397	411	410	483	418	483
III	372	421	416	375	504	376	405	435	494	390	435
IV	376	413	399	379	485	416	367	444	505	384	450
V	378	405	413	382	490	394	423	428	492	402	425
VI	384	405	409	386	434	387	436	460	491	462	438
VII	383	400	397	386	444	359	400	472	478	414	439
I-VII 2009/I-VII 2008	115.2	113.1	117.0	111.6	107.3	114.0	109.1	121.8	121.0	114.9	103.2

<b>/nastavak/</b>	<b>/ continued /</b>									
	Opštine / Municipalities									
	Plav	Plužine	Pljevlja	Podgorica	Rožaje	Tivat	Ulcinj	Herceg Novi	Cetinje	Šavnik
Ø 2007	255	301	334	371	310	331	243	281	251	285
Ø 2008	332	377	420	460	382	392	315	344	300	358
Ø I - VII 2008	316	353	405	450	374	388	289	330	278	347
Ø I - VII 2009	381	459	485	523	437	459	349	372	416	387
2008										
VII	339	343	422	473	378	383	309	331	283	353
VIII	360	372	430	467	390	394	455	355	280	359
IX	350	473	436	482	389	391	322	351	280	369
X	348	364	448	463	388	385	318	359	393	370
XI	359	486	439	467	392	402	317	362	396	372
XII	372	428	449	493	401	407	321	374	401	401
2009										
I	362	442	466	540	430	460	354	369	419	395
II	410	421	467	520	429	449	352	361	416	398
III	397	515	500	512	438	472	357	360	419	385
IV	379	430	508	519	438	452	330	377	413	374
V	372	569	490	525	438	487	348	403	423	388
VI	377	422	496	526	446	455	353	379	420	390
VII	375	471	475	521	440	439	347	361	402	381
I-VII 2009/I-VII 2008	120.6	130.0	119.8	116.2	116.8	118.3	120.8	112.7	149.6	111.5

**INDEKSI CIJENA PROIZVOĐAČA INDUSTRIJSKIH PROIZVODA**  
**PRODUCERS PRICE INDICES FOR INDUSTRIAL PRODUCTS**

	2007 2006	2008 2007	I-VII 2009 I-VII 2008	Ø 2008 = 100					
				2008					
				VII	VIII	IX	X	XI	XII
<b>Ukupno</b>	<b>108.5</b>	<b>114.0</b>	<b>98.6</b>	<b>103.5</b>	<b>104.9</b>	<b>104.1</b>	<b>104.0</b>	<b>103.4</b>	<b>99.2</b>
<b>Vađenje ruda i kamena</b>	<b>110.0</b>	<b>114.0</b>	<b>105.5</b>	<b>102.0</b>	<b>102.3</b>	<b>103.3</b>	<b>104.2</b>	<b>103.9</b>	<b>103.4</b>
<b>Prerađivačka industrija</b>	<b>106.6</b>	<b>111.3</b>	<b>92.8</b>	<b>104.1</b>	<b>106.1</b>	<b>104.8</b>	<b>104.6</b>	<b>103.7</b>	<b>94.8</b>
<b>Proizvodnja el. energije, gasa i vode</b>	<b>113.3</b>	<b>121.4</b>	<b>112.9</b>	<b>102.4</b>	<b>102.4</b>	<b>102.4</b>	<b>102.4</b>	<b>102.4</b>	<b>110.2</b>
<b>Vađenje ruda i kamena</b>	<b>110.0</b>	<b>114.0</b>	<b>105.5</b>	<b>102.0</b>	<b>102.3</b>	<b>103.3</b>	<b>104.2</b>	<b>103.9</b>	<b>103.4</b>
Vađenje energetske sirovine	112.5	117.9	102.1	99.3	99.3	101.5	101.5	101.5	101.5
Vađenje kamenog uglja, lignita i treseta	112.5	117.9	102.1	99.3	99.3	101.5	101.5	101.5	101.5
Vađenje ostalih sirovina i materijala	108.1	110.9	108.3	104.1	104.7	104.8	106.2	105.8	104.9
Vađenje ruda metala	108.8	111.2	109.7	104.3	105.0	105.1	106.9	106.4	105.2
Vađenje ostalih ruda i kamena	105.1	109.9	102.4	103.1	103.1	103.1	103.3	103.3	103.3
<b>Prerađivačka industrija</b>	<b>106.6</b>	<b>111.3</b>	<b>92.8</b>	<b>104.1</b>	<b>106.1</b>	<b>104.8</b>	<b>104.6</b>	<b>103.7</b>	<b>94.8</b>
Prehrambeni proizvodi, pića i duvan	104.0	113.0	104.4	100.7	101.2	101.5	101.6	101.5	101.2
Proizv. prehrambenih proizvoda i pića	105.0	115.2	103.2	100.8	101.3	101.7	101.8	101.7	101.4
Proizvodnja duvanskih proizvoda	98.0	100.0	113.3	100.0	100.0	100.0	100.0	100.0	100.0
Proizvodnja tekstila i tekstilnih proizvoda	105.8	104.6	97.6	102.6	100.5	100.5	100.6	94.9	94.9
Proizvodnja tekstilnih prediva i tkanina	100.9	101.2	99.3	100.2	99.5	99.5	99.7	99.7	99.7
Proizvodnja odjevnih predmeta i krzna	115.0	111.1	94.5	107.2	102.3	102.3	102.3	86.0	86.1
Proizvodnja kože i predmeta od kože	100.0	101.4	105.7	99.1	99.1	99.1	99.1	104.7	104.7
Proizvodnja predmeta od kože i obuće	100.0	101.4	105.7	99.1	99.1	99.1	99.1	104.7	104.7
Prerada drveta i proizvoda od drveta	101.2	109.6	103.9	101.3	101.8	102.1	101.5	101.5	101.5
Proizvodi od drveta, plute i slično	101.2	109.6	103.9	101.3	101.8	102.1	101.5	101.5	101.5
Proizvodnja papira, izdavanje i štampanje	100.1	118.7	99.3	99.3	99.3	99.3	99.6	99.6	99.6
Proizv. celuloze, papira i proizv. od papira	100.2	100.7	101.2	99.7	99.7	99.7	100.9	100.9	100.9
Izdavanje, štampanje i reprodukcija	100.0	127.3	98.6	99.2	99.2	99.2	99.2	99.2	99.2
Prerada hemijskih proizvoda i vlakana	121.4	108.8	116.1	99.3	100.4	105.3	105.3	105.3	105.3
Proizvodnja hemikalija i hem. proizvoda	121.4	108.8	116.1	99.3	100.4	105.3	105.3	105.3	105.3
Proizvodnja proizv. od gume i plastike	102.5	103.5	107.0	97.5	103.5	103.5	103.5	103.5	103.5
Proizvodnja proizv. od gume i plastike	102.5	103.5	107.0	97.5	103.5	103.5	103.5	103.5	103.5
Proizv. proizvoda od ost. nemetalnih min.	107.3	105.8	99.5	100.1	100.1	100.1	100.1	100.1	100.1
Proizv. proizvoda od ost. nemet. minerala	107.3	105.8	99.5	100.1	100.1	100.1	100.1	100.1	100.1
Proizv. osn. metala i metalnih proizvoda	108.2	111.5	78.9	107.7	111.0	107.8	107.4	106.0	87.8
Proizvodnja osnovnih metala	108.6	112.0	76.9	108.3	111.9	108.4	108.1	106.0	86.6
Proizvodnja metal. proizv., osim mašina	100.0	101.3	108.4	98.9	98.9	98.9	97.2	106.5	106.5
Proizvodnja mašina i uređaja, ostala	97.0	98.9	99.1	99.5	99.5	99.5	99.5	99.5	99.5
Proizvodnja mašina i uređaja, ostala	97.0	98.9	99.1	99.5	99.5	99.5	99.5	99.5	99.5
Prerađivačka industrija, ostala	103.0	113.7	115.0	102.6	102.6	102.6	102.6	102.6	102.6
Proizv. namještaja i raznovrsnih proizvoda	103.0	113.7	115.0	102.6	102.6	102.6	102.6	102.6	102.6
<b>Proizvodnja el. energije, gasa i vode</b>	<b>113.3</b>	<b>121.4</b>	<b>112.9</b>	<b>102.4</b>	<b>102.4</b>	<b>102.4</b>	<b>102.4</b>	<b>102.4</b>	<b>110.2</b>
Proizv. električne energije, gasa i vode	113.3	121.4	112.9	102.4	102.4	102.4	102.4	102.4	110.2
Proizv. el. energije, gasa i vode	113.3	121.4	112.9	102.4	102.4	102.4	102.4	102.4	110.2
<b>Izabrane grupe proizvoda</b>									
<b>Elementi i materijal za ugrađivanje u građevinarstvu</b>	105.4	107.0	107.2	99.5	102.1	102.1	101.5	103.7	103.7

**INDEKSI CIJENA PROIZVOĐAČA INDUSTRIJSKIH PROIZVODA**  
**PRODUCERS PRICE INDICES FOR INDUSTRIAL PRODUCTS**

Ø 2008 = 100							
2009							
I	II	III	IV	V	VI	VII	
98.1	98.1	96.6	96.8	96.3	95.3	93.9	Total
101.8	103.2	103.4	103.4	103.3	103.0	102.3	Mining and quarrying
93.4	93.2	90.9	91.3	90.6	89.1	88.4	Manufacturing
110.2	110.2	110.2	110.2	110.2	110.2	106.9	Electricity, gas and water supply
101.8	103.2	103.4	103.4	103.3	103.0	102.3	Mining and quarrying
101.5	101.5	101.5	101.5	101.5	101.5	100.0	Extraction of energy producing materials
101.5	101.5	101.5	101.5	101.5	101.5	100.0	Mining of coal and lignite, extraction of peat
102.1	104.6	104.8	104.8	104.7	104.1	104.1	Mining and quarr. exc. energy produc. materials
102.0	105.0	105.4	105.3	106.1	106.1	106.1	Mining of metal ores
102.8	102.8	102.4	102.4	98.9	95.4	95.4	Other mining and quarrying
93.4	93.2	90.9	91.3	90.6	89.1	88.4	Manufacturing
101.2	103.2	103.8	103.7	104.1	104.1	103.6	Manuf. of food produc., beverages and tobacco
101.3	101.6	102.3	102.2	102.6	102.6	102.0	Manufacture of food products and beverages
100.0	115.5	115.5	115.5	115.5	115.5	115.5	Manufacture of tobacco products
97.2	100.1	100.2	100.2	100.2	98.2	95.4	Manufacture of textile and textile products
99.7	99.7	99.5	99.5	99.5	99.5	99.5	Manufacture of textiles
92.7	101.0	101.4	101.4	101.4	95.8	87.8	Manufacture of wearing apparel and fur
104.7	104.7	104.7	104.7	104.7	104.7	104.7	Manufacture of leather and leather products
104.7	104.7	104.7	104.7	104.7	104.7	104.7	Manufac. of leather products and footwear
100.8	106.2	104.7	104.5	103.4	99.4	99.7	Manufacture of wood and wood products
100.8	106.2	104.7	104.5	103.4	99.4	99.7	Manufac. of wood product, cork and similar
99.6	99.6	99.6	99.6	99.6	99.6	99.6	Manufacture of paper, publishing and printing
100.9	100.9	100.9	100.9	100.9	100.9	100.9	Manufac. of pulp, paper and paper products
99.2	99.2	99.2	99.2	99.2	99.2	99.2	Publishing, printing and reproduction
106.9	106.9	106.8	117.0	117.0	117.0	116.2	Manufacture of chemical products and fibres
106.9	106.9	106.8	117.0	117.0	117.0	116.2	Manuf. of chemicals and chemical products
103.5	103.5	103.5	103.5	105.6	105.6	105.6	Manufacture of rubber and plastic products
103.5	103.5	103.5	103.5	405.6	105.6	105.6	Manufacture of rubber and plastic products
100.1	100.1	100.1	99.0	99.0	99.0	99.0	Manufacture of other non-metal minerals
100.1	100.1	100.1	99.0	99.0	99.0	99.0	Manuf. of other non-metal mineral products
84.7	81.0	76.2	76.2	74.5	72.3	71.4	Manufac. of basic metals and metal products
83.2	79.3	74.2	74.2	72.3	70.1	68.8	Manufacture of basic metals
106.5	106.5	106.5	106.5	106.5	106.5	110.9	Manuf. of metal products except machinery
99.5	99.5	99.5	99.5	99.5	99.5	99.5	Manufacture of other machinery and equipment
99.5	99.5	99.5	99.5	99.5	99.5	99.5	Manuf. of other machinery and equipment
103.5	115.8	115.8	115.8	115.8	112.4	111.5	Manufacturing n.e.c.
103.5	115.8	115.8	115.8	115.8	112.4	111.5	Manufac. of furniture and related products
110.2	110.2	110.2	110.2	110.2	110.2	106.9	Electricity, gas and water supply
110.2	110.2	110.2	110.2	110.2	110.2	106.9	Electricity, gas and water supply
110.2	110.2	100.2	110.2	110.2	110.2	106.9	Electricity, gas and water supply
103.3	104.6	104.3	104.2	104.4	107.2	108.1	Chosen groups of products Elements and material for building in the construction

**INDEKSI POTROŠAČKIH CIJENA PO GRUPAMA PROIZVODA**  
**RETAIL BY GROUPS OF PRODUCTS**

	<u>2008</u> 2007	<u>I-VII 2009</u> I-VII 2008	Ø 2008 = 100					
			2008					
			VII	VIII	IX	X	XI	XII
Hleb i žitarice	111.5	104.2	99.9	100.3	102.0	102.1	102.4	102.4
Meso	104.6	108.9	99.4	101.2	103.3	103.3	104.5	104.5
Riba	108.5	102.2	99.3	99.4	101.3	101.3	101.5	110.2
Mlijeko, sir i jaja	108.2	111.2	98.6	100.4	101.2	103.5	106.1	107.9
Ulje i masti	134.3	88.4	108.2	108.6	108.5	97.7	96.4	95.0
Voće	109.0	94.8	111.6	105.4	103.3	90.6	86.4	85.7
Povrće	113.5	102.1	84.1	87.8	91.4	99.1	99.0	104.2
Šećer, med, pekmez i ost. slat.	100.5	102.2	100.7	100.5	100.2	100.8	101.0	101.3
Ostali prehrambeni proizvodi	101.5	99.8	99.6	100.3	100.8	100.8	99.8	99.3
Bezalkoholna pića	99.7	98.8	100.3	100.3	99.8	99.8	100.1	100.1
Alkoholna pića	106.4	106.8	100.7	101.1	102.8	103.4	103.6	103.6
Duvan	100.7	106.8	100.0	100.0	100.0	100.0	100.1	100.1
Materijal za odjeću	101.8	100.2	99.9	99.8	100.2	100.2	100.2	100.2
Odjeća	101.0	101.9	99.2	99.5	101.0	101.4	101.7	101.8
Ostalo za odjeću	101.5	101.9	99.2	100.5	101.4	101.4	101.4	101.4
Čišćenje i iznajmljivanje odjeće	100.3	113.9	100.2	100.2	100.2	100.2	100.2	100.2
Obuća	100.4	100.1	99.9	99.9	100.0	100.0	100.0	100.1
Popravka i iznajmljivanje obuće	100.9	103.5	101.4	101.4	101.4	101.4	101.4	101.4
Održavanje i popravke za stan	102.7	105.3	100.2	101.2	101.2	101.2	101.4	101.4
Snadbijevanje vodom	102.7	112.4	99.2	101.2	101.2	101.2	101.2	101.2
Elektr. energija, plin i ost. goriva	111.5	122.7	103.6	104.0	106.0	106.7	106.7	116.0
Namještaj i pokućstvo	100.4	92.7	99.8	100.1	100.1	100.1	100.1	100.1
Tekstilni proizvodi za kuću	101.1	101.3	99.9	99.9	100.4	100.4	110.5	100.6
Kućni aparati	101.0	101.4	99.3	100.3	101.3	101.3	101.6	101.6
Stakleno, stono posudje	101.1	99.2	100.3	100.3	99.5	99.5	99.6	99.8
Alati i oprema za kuću	96.1	99.6	100.2	100.2	100.2	100.2	100.2	100.2
Dobra i usluge za potrošnju	101.3	100.9	100.0	100.1	100.1	100.1	100.1	100.2
Zdravlje	106.0	103.7	100.6	100.6	100.7	101.6	101.6	101.9
Kupovina vozila	103.1	108.9	97.1	97.1	105.8	105.8	105.8	105.8
Oprema za održavanje vozila	109.9	83.3	110.7	105.6	105.9	104.0	92.7	86.2
Prevozne usluge	117.6	114.1	102.5	103.5	103.5	103.5	103.6	103.5
Komunikacije	117.6	102.7	100.0	100.0	99.9	99.9	99.8	99.8
Kultura i rekreacije	101.7	101.1	99.8	99.8	101.6	101.8	101.4	101.1
Obrazovanje	100.0	100.0	100.0	100.0	100.0	100.0	100.0	100.0
Restorani i hoteli	104.9	105.2	100.0	100.0	100.0	100.0	100.0	100.0
Ostala dobra i usluge	100.7	101.3	99.9	100.1	100.4	100.4	100.5	100.5



**INDEKSI POTROŠAČKIH CIJENA PO GRUPAMA PROIZVODA**  
**RETAIL BY GROUPS OF PRODUCTS**

Ø 2008 = 100							
2009							
I	II	III	IV	V	VI	VII	
102.5	102.7	102.7	102.7	102.8	103.1	103.1	Breads and cereals
104.8	106.4	106.5	106.1	106.2	106.8	107.2	Meat
100.7	100.8	99.5	98.5	99.7	100.9	101.5	Fish
108.6	108.2	107.8	107.9	108.2	108.2	108.3	Milk, cheese,eggs
93.6	92.4	91.2	85.8	83.5	83.6	83.0	Oils and fats
86.7	90.6	99.3	103.9	103.7	102.2	104.2	Fruit
104.4	108.0	107.6	115.7	116.9	96.3	84.8	Vegetables
101.5	101.1	100.8	101.6	101.8	101.8	102.8	Sugar, honey, jam, etc.
99.4	99.1	99.6	99.5	99.7	100.2	100.1	Other alimentary products
100.2	99.4	99.4	97.9	97.8	98.4	98.6	Non-alcoholic beverages
104.3	105.9	104.3	104.3	104.6	105.1	105.3	Alcoholic beverages
106.2	106.8	106.9	106.9	106.9	106.9	106.9	Tobacco
100.2	100.0	99.9	99.9	100.1	100.1	100.6	Material for clothes
101.9	101.2	101.2	100.9	100.8	100.6	100.6	Clothes
101.4	101.7	101.7	101.7	100.3	100.3	100.3	Other for clothes
100.2	103.5	116.7	118.8	118.8	118.8	118.8	Cleaning and renting of clothes
100.4	100.4	100.2	100.0	100.0	99.9	99.9	Footwear
101.4	101.4	102.8	102.8	102.9	102.9	102.9	Repairing and renting of footwear
101.7	102.4	103.3	105.1	105.8	105.8	106.0	Maintaince and reparation of flats
110.1	110.8	110.8	110.8	110.8	113.3	113.3	Water
116.0	116.0	116.2	116.2	116.2	116.2	113.8	Electricity, petrol, and oth. fuels
100.1	97.7	92.8	91.0	89.0	88.7	88.7	Furniture and household furnish.
100.8	100.9	100.8	100.5	100.7	101.6	101.6	Textile products for house
102.2	101.6	101.1	101.1	100.0	99.0	98.5	Household aparatures
99.7	99.3	99.3	99.3	99.3	99.2	99.2	Glass, table ware
99.9	99.5	99.7	99.4	99.0	99.3	99.3	Tools and equipment for house
100.1	100.4	103.6	102.7	99.6	99.8	99.4	Goods and services for consumpt.
102.7	102.7	102.7	102.8	102.7	102.7	102.7	Health care
105.8	105.8	105.8	105.7	105.6	105.6	105.6	Buying of vehicles
78.3	82.6	81.5	84.2	84.9	89.1	87.4	Equip. for maintaining of vehicles
100.5	103.3	112.6	114.3	114.3	115.7	118.6	Transport services
99.8	99.8	101.7	103.7	104.3	105.0	105.0	Communications
100.5	100.2	100.0	100.0	100.5	100.5	100.5	Culture and recreations
100.0	100.0	100.0	100.0	100.0	100.0	100.0	Education
100.0	100.0	100.0	109.1	109.1	109.1	109.1	Restaurants and hotels
100.5	100.5	100.4	101.4	101.4	101.5	101.4	Other goods and services

**INDEKSI POTROŠAČKIH CIJENA /  
CONSUMER PRICES INDEX**

Ø 2008 = 100

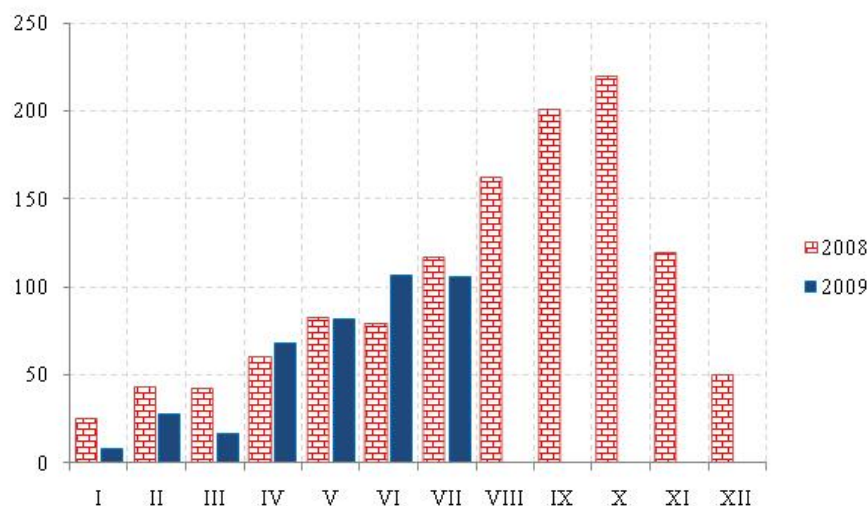
	Potrošačke cijene ukupno <i>Consumer prices- total</i>	Hrana i bezalkoholna pića <i>Food and non alcoholic beverage</i>	Alkoholna pića i duvan <i>Alcoholic beverages and tobacco</i>	Odjeća i obuća <i>Clothing and footwear</i>	Stanovanje <i>Renting</i>	Pokućstvo i oprema za kuću <i>Household furnishings</i>
2008	100.0	100.0	100.0	100.0	100.0	100.0
Ø I - VII 2008	98.8	99.0	99.3	99.5	95.2	99.7
Ø I - VII 2009	103.1	103.7	106.0	100.7	114.6	99.2
2008						
VII	100.7	99.1	100.2	99.5	102.9	99.8
VIII	100.9	100.0	100.4	99.7	103.5	100.2
IX	101.9	101.2	101.0	100.6	105.1	100.4
X	101.9	101.2	101.2	100.8	105.7	100.5
XI	101.3	101.7	101.2	101.0	105.7	100.5
XII	102.4	102.8	101.3	101.1	113.3	100.6
2009						
I	102.8	102.8	105.5	101.2	114.5	100.7
II	102.7	103.6	105.9	100.9	114.6	100.3
III	103.2	104.1	106.0	100.9	114.8	100.4
IV	103.8	104.8	106.0	100.7	114.9	99.7
V	103.9	105.0	106.1	100.6	114.9	97.9
VI	103.5	103.2	106.3	100.4	115.2	97.8
VII	102.9	102.4	106.4	100.4	113.3	97.5
<b>I-VII 2009/I-VII 2008</b>	<b>104.4</b>	<b>104.7</b>	<b>106.8</b>	<b>101.2</b>	<b>120.3</b>	<b>99.5</b>

/ nastavak /

/ continued /

	Zdravlje <i>Health care</i>	Prevoz <i>Transport</i>	Komunikacije <i>Communications</i>	Kultura i rekreacija <i>Culture and recreation</i>	Obrazovanje <i>Education</i>	Restorani i hoteli <i>Restaurants and hotels</i>	Ostala dobra i usluge <i>Other goods and services</i>
2008	100.0	100.0	100.0	100.0	100.0	100.0	100.0
Ø I - VII 2008	99.1	99.8	100.1	99.2	100.0	100.0	99.7
Ø I - VII 2009	102.7	91.1	102.8	100.3	100.0	105.2	101.0
2008							
VII	100.6	107.7	100.0	99.8	100.0	100.0	99.9
VIII	100.6	104.3	100.0	99.8	100.0	100.0	100.1
IX	100.7	105.5	99.9	101.6	100.0	100.0	100.4
X	101.6	104.1	99.9	101.8	100.0	100.0	100.4
XI	101.6	96.0	99.8	101.4	100.0	100.0	100.5
XII	101.9	91.4	99.8	101.1	100.0	100.0	100.5
2009							
I	102.7	85.2	99.9	100.5	100.0	100.0	100.5
II	102.7	88.7	99.8	100.2	100.0	100.0	100.5
III	102.7	89.6	101.7	100.0	100.0	100.0	100.4
IV	102.8	91.8	103.7	100.0	100.0	109.1	101.4
V	102.7	92.3	104.3	100.5	100.0	109.1	101.4
VI	102.7	95.5	105.0	100.5	100.0	109.1	101.5
VII	102.7	94.8	105.0	100.5	100.0	109.1	101.4
<b>I-VII 2009/I-VII 2008</b>	<b>103.7</b>	<b>91.3</b>	<b>102.7</b>	<b>101.1</b>	<b>100.0</b>	<b>105.2</b>	<b>101.3</b>

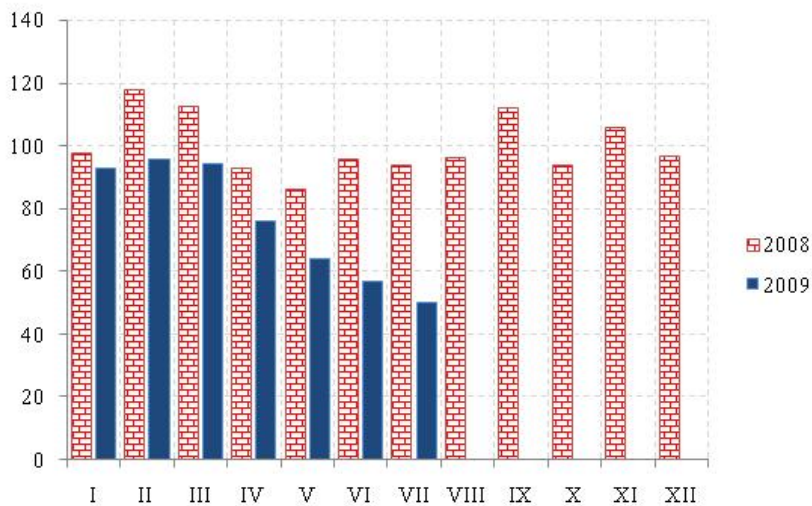
## ŠUMARSTVO / FORESTRY



Ø 2008 = 100

	Indeks Index	Ukupno Total	Proizvedeni sortimenti, m³ / Production of forests assortments						
			Četinara / Conifers				Lišćara / Deciduous trees		
			trupci Saw logs	tehničko drvo Lumber	prostorno drvo Space wood	ogrijevno drvo Firewood	trupci Saw logs	prostorno drvo Space wood	ogrijevno drvo Firewood
2005	100.3	279228	166742	10156	11521	1949	47719	7460	33510
2006	115.3	325896	194057	11808	12798	1334	46736	15406	43754
2007	92.9	263787	151440	8878	12623	367	45000	14388	31091
2008	100.0	281260	160901	13090	17492	861	46467	9655	32794
Ø I - VII 2008	64.0	15008	8233	809	1129	4	2730	791	1312
Ø I - VII 2009	59.8	13844	8712	516	905	48	1703	361	1599
2008									
VII	116.9	27227	14237	909	818	26	6690	963	3584
VIII	162.5	38907	19334	885	1803	184	9365	1324	6012
IX	200.5	45896	29335	2063	2021	280	5869	496	5832
X	219.4	50868	31036	2340	2281	175	7537	499	7000
XI	119.6	28090	16460	1500	1735	73	3711	952	3659
XII	49.9	12441	7106	638	1748	120	872	848	1109
2009									
I	8.1	1832	1304	90	364	-	-	4	70
II	27.5	5798	4867	361	541	-	-	4	25
III	16.6	3561	2891	141	392	-	92	2	43
IV	67.7	14772	11118	713	1456	1	648	363	473
V	87.1	19969	13244	841	1076	49	2042	808	1909
VI	106.4	25557	13888	799	1264	83	4528	979	4016
VII	105.3	25417	13671	666	1241	203	4612	368	4656
I-VII 2009/I-VII 2008	93.4	92.3	105.8	63.8	80.2	1200.0	62.4	45.6	121.9

**INDUSTRIJA / INDUSTRY**  
**INDEKSI INDUSTRIJSKE PROIZVODNJE – po sektorima**  
**INDICES OF INDUSTRIAL PRODUCTION – by sectors**



Ø 2008= 100

	INDUSTRIJA Ukupno <i>INDUSTRY Total</i>	Vađenje ruda i kamena <i>Mining and quarrying</i>	Prerađivačka industrija <i>Manufacturing</i>	Proizvodnja električne energije, gasa i vode <i>Electricity, gas and water supply</i>
2004	102.9	81.2	100.6	117.0
2005	101.0	81.3	103.6	101.3
2006	101.9	83.7	103.2	104.4
2007	102.0	85.0	112.7	75.8
2008	100.0	100.0	100.0	100.0
Ø I - VII 2008	99.4	88.7	100.8	98.6
Ø I - VII 2009	75.7	37.7	65.5	118.6
2008				
VII	93.5	77.7	104.2	66.8
VIII	96.3	154.1	99.0	69.5
IX	112.0	149.9	106.9	114.7
X	93.9	124.0	102.3	59.2
XI	105.8	105.7	100.5	121.7
XII	96.4	45.4	85.6	144.8
2009				
I	92.9	40.6	62.1	201.4
II	95.7	56.8	62.0	208.3
III	94.5	67.6	78.9	149.7
IV	76.0	60.8	62.1	122.1
V	64.1	27.1	64.2	75.9
VI	57.0	5.3	68.0	41.2
VII	50.0	5.7	61.0	31.5
I-VII 2009/I-VII 2008	76.2	42.5	65.0	120.3

**INDEKSI INDUSTRIJSKE PROIZVODNJE – po podsektorima**  
**INDICES OF INDUSTRIAL PRODUCTION – by sub-sectors**

Ø 2008 = 100

	Vadenje energetske sirovine <i>Extraction of energy producing materials</i>	Vadenje ostalih sirovina i materijala <i>Mining and quarrying except energy producing materials</i>	Prehrambeni proizvodi, pića i duvan <i>Manufacture of food products, beverages and tobacco</i>	Proizvodnja tekstila i tekstilnih proizvoda <i>Manufacture of textile and textile products</i>
2004	89.5	76.7	100.4	146.6
2005	77.6	83.3	97.8	116.3
2006	91.2	79.5	88.6	135.6
2007	71.3	92.3	88.0	125.3
2008	100.0	100.0	100.0	100.0
Ø I - VII 2008	89.1	88.5	92.6	160.1
Ø I - VII 2009	77.6	16.4	89.3	15.0
2008				
VII	112.4	59.2	130.5	82.0
VIII	119.5	172.6	118.4	10.6
IX	141.7	154.3	102.3	20.4
X	110.0	131.6	108.6	18.6
XI	111.8	102.5	99.7	11.7
XII	93.6	19.6	122.4	17.9
2009				
I	107.3	4.9	74.5	20.5
II	124.8	20.4	83.8	16.1
III	136.9	30.5	102.3	19.2
IV	123.1	27.5	74.7	7.5
V	41.4	19.5	91.5	11.0
VI	4.0	6.0	93.5	15.4
VII	5.4	5.9	104.5	15.4
I-VII 2009/I-VII 2008	87.1	18.5	96.4	9.4

/nastavak/

/continued/

	Proizvodnja kože i predmeta od kože <i>Manufacture of leather and leather products</i>	Prerada drveta i proizvodi od drveta <i>Manufacture of wood and wood products</i>	Proizvodnja papira, izdavanje i štampanje <i>Manufacture of paper, publishing and printing</i>	Proizvodnja hemijskih proizvoda i vlakana <i>Manufacture of chemical products and fibres</i>
2004	8.1	98.0	83.7	54.8
2005	20.3	131.2	105.9	161.7
2006	28.4	129.9	101.6	100.6
2007	46.3	131.6	107.4	153.4
2008	100.0	100.0	100.0	100.0
Ø I - VII 2008	92.9	100.0	93.9	96.0
Ø I - VII 2009	57.6	53.1	96.4	133.7
2008				
VII	219.8	127.0	142.4	25.9
VIII	146.5	125.2	147.6	100.7
IX	-	100.5	117.8	119.5
X	36.6	94.6	90.5	84.3
XI	219.8	101.5	86.7	143.6
XII	146.5	78.3	99.8	80.0
2009				
I	109.9	16.3	77.3	70.8
II	146.5	30.7	82.4	113.4
III	73.3	63.7	117.3	202.0
IV	36.6	57.3	85.6	157.9
V	-	62.9	96.9	111.5
VI	-	59.3	101.6	160.1
VII	36.6	81.7	113.4	120.6
I-VII 2009/I-VII 2008	62.0	53.1	102.7	139.3

**INDEKSI INDUSTRIJSKE PROIZVODNJE – po podsektorima**  
**INDICES OF INDUSTRIAL PRODUCTION – by sub-sectors**

Ø 2008 = 100

/nastavak /

/continued/

	Proizvodnja proizvoda od gume i plastičnih masa <i>Manufacture of rubber and plastic products</i>	Proizvodnja proizvoda od ostalih nemetalnih minerala <i>Manufacture of other non-metal minerals</i>	Proizvodnja osnovnih metala i metalnih proizvoda <i>Manufacture of basic metals and metal products</i>	Proizvodnja mašina i uređaja, ostala <i>Manufacture of other machinery and equipment</i>
2004	236.5	102.1	106.3	37.6
2005	222.8	101.7	99.2	48.5
2006	155.0	102.7	103.9	109.5
2007	157.5	102.2	114.8	105.9
2008	100.0	100.0	100.0	100.0
Ø I - VII 2008	125.5	96.3	102.3	100.2
Ø I - VII 2009	62.9	56.3	54.8	93.4
2008				
VII	157.7	101.4	104.5	122.6
VIII	108.2	111.6	95.3	39.8
IX	75.1	111.2	106.8	149.3
X	48.1	113.9	102.6	142.8
XI	66.1	107.7	95.6	161.4
XII	24.0	81.2	83.7	5.7
2009				
I	57.1	56.0	56.5	200.5
II	102.2	50.9	55.8	57.7
III	70.6	58.9	68.1	34.5
IV	45.1	62.0	49.3	104.4
V	82.6	59.5	54.1	75.2
VI	31.6	51.5	55.1	104.4
VII	51.1	55.5	44.6	77.1
I-VII 2009/I-VII 2008	50.1	58.5	53.6	93.2

/nastavak /

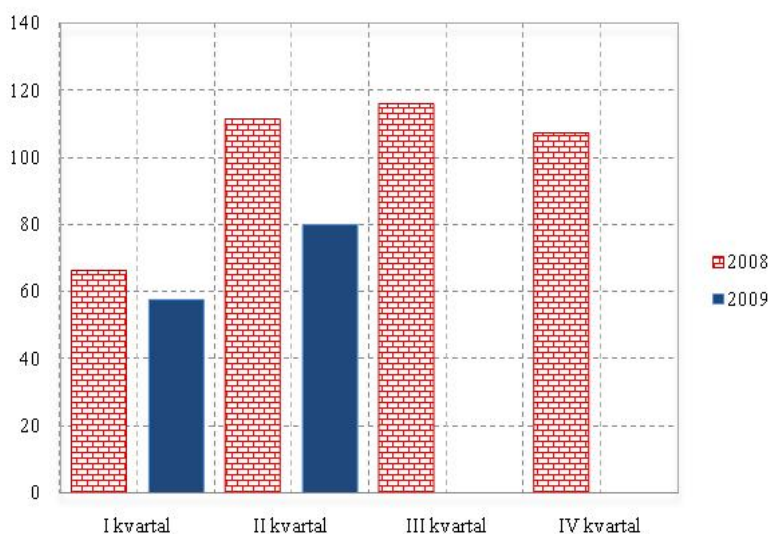
/continued/

	Proizvodnja mašina, uređaja i aparata za domaćinstvo <i>Manufacture of machines, devices and apparatus for households</i>	Proizvodnja saobraćajnih sredstava <i>Manufacture of transport equipment</i>	Prerađivačka industrija, ostala <i>Manufacturing n.e.c.</i>	Proizvodnja električne energije, gasa i vode <i>Electricity, gas and water supply</i>
2004	-	130.6	18.1	146.6
2005	165.6	121.2	25.2	116.3
2006	189.4	119.5	97.3	135.6
2007	303.9	116.7	96.1	125.3
2008	100.0	100.0	100.0	100.0
Ø I - VII 2008	-	106.3	122.3	98.6
Ø I - VII 2009	-	98.9	50.2	118.6
2008				
VII	-	103.7	107.5	66.8
VIII	-	92.6	91.2	69.5
IX	-	103.7	117.3	114.7
X	-	92.6	55.2	59.2
XI	-	107.4	30.8	121.7
XII	-	59.3	49.3	144.8
2009				
I	-	88.9	42.9	201.4
II	-	77.8	31.1	208.3
III	-	66.7	35.0	149.7
IV	-	92.6	67.0	122.1
V	-	122.2	47.7	75.9
VI	-	122.2	48.9	41.2
VII	-	122.2	78.5	31.5
I-VII 2009/I-VII 2008	-	93.0	41.0	120.3

**GRADEVINARSTVO / CONSTRUCTION**

Vrijednost izvršenih radova u hiljadama EUR / Value of finalized construction works

Ø 2008 = 100

**VRIJEDNOST IZVRŠENIH I UGOVORENIH RADOVA, BROJ ZAPOSLENIH I IZVRŠENI EFEKTIVNI ČASOVI**

VALUE OF FINALIZED AND ORDERED WORKS, NUMBER OF EMPLOYEES AND FINALIZED EFFECTIVE HOURS

	Indeks <i>Index</i>	Vrijednost izvršenih radova u hiljadama EUR <i>Value of finalized construction works</i>	Prosječan broj radnika na gradilištu <i>Average number of employees</i>	Indeks <i>Index</i>	Izvršeni efektivni časovi u 000 <i>Finalized effective hours in thousands</i>	
2004	18.7	54051	2011	45.2	4514	2004
2005	25.5	73252	2343	53.5	5345	2005
2006	70.9	204248	3525	84.3	8424	2006
2007	68.6	197639	3522	82.9	8280	2007
2008	100	287931	4200	100	9994	2008
2008 I kvartal	65.9	47445	4093	88.3	2205	2008 I quarter
II kvartal	111.2	80023	4567	103.0	2574	II quarter
III kvartal	115.8	83376	4118	107.1	2676	III quarter
IV kvartal	107.1	77087	4021	101.6	2539	IV quarter
2009 I kvartal	59.9*	43085*	3899*	77.9*	1946*	2009 I quarter
II kvartal <sup>1)</sup>	79.6	57275	3756	86.1	2150	II quarter

/ nastavak/

/ continued /

	Indeks <i>Index</i>	Nove narudžbe na zgradama u hilj. EUR <i>New orders on buildings, thous. EUR</i>	Indeks <i>Index</i>	Nove narudžbe na ostalim građevinama u hilj. EUR <i>New orders on other buildings, thous. EUR</i>	
2006	116.6	99327	48.8	60720	2006
2007	164.5	140006	59.1	73539	2007
2008	100	85145	100	124524	2008
2008 I kvartal	128.5	27354	92.3	28722	2008 I quarter
II kvartal	133.4	28385	121.0	37686	II quarter
III kvartal	59.8	12730	68.3	21248	III quarter
IV kvartal	78.3	16676	118.4	36868	IV quarter
2009 I kvartal	60.6	12890	38.5	11979	2009 I quarter
II kvartal <sup>1)</sup>	9.7	2065	70.6	21982	II quarter

<sup>1)</sup> Prethodni podatak<sup>1)</sup> Preliminary data

**SPOLJNA TRGOVINA / EXTERNAL TRADE <sup>1)</sup>**  
**Izvoz i uvoz po zemljama, u hilj. EUR / Exports and imports by countries, thous EUR**

	Izvoz / Export			Uvoz / Import			
	I - VII 2008	I - VII 2009	Indeks / Index I- VII 2009 I - VII 2008	I - VII 2008	I – VI 2009	Indeks / Index I- VII 2009 I - VII 2008	
<b>UKUPNO</b>	<b>267404.4</b>	<b>163455.5</b>	<b>61.1</b>	<b>1509629.0</b>	<b>913733.8</b>	<b>60.5</b>	<b>TOTAL</b>
<b>Evropa</b>	<b>265156.8</b>	<b>161410.7</b>	<b>60.9</b>	<b>1458263.6</b>	<b>887930.4</b>	<b>60.9</b>	<b>Europe</b>
Albanija	4149.4	3251.9	78.4	12587.4	12269.6	97.5	Albania
Austrija	533.6	636.7	119.3	57998.9	39041.8	67.3	Austria
Belgija-Luxemburg	136.0	48.3	35.5	5882.6	2872.5	48.8	Belgium – Luxembourg
BiH (sa Rep. Srpskom)	12626.4	10170.0	80.5	104205.1	57668.8	55.3	B&H (with RS)
Bugarska	102.2	77.4	75.7	6812.4	4124.8	60.5	Bulgaria
Velika Britanija	2365.2	839.8	35.5	3796.4	2368.6	62.4	Great Britain
Grčka	49740.4	35165.3	70.7	107541.5	52839.5	49.1	Greece
Danska	9.5	0.7	7.4	1560.4	1092.2	70.0	Denmark
Italija	67203.3	27394.9	40.8	124389.0	62688.0	50.4	Italy
Mađarska	4289.2	8584.9	200.2	35049.9	17607.3	50.2	Hungary
Njemačka	8289.5	3750.1	45.2	79436.3	36988.4	46.6	Germany
Slovenija	26252.8	10667.7	40.6	100315.2	65825.3	65.6	Slovenia
Poljska	66.6	124.0	186.2	6786.7	4996.6	73.6	Poland
Makedonija	429.2	780.7	181.9	17886.5	11692.5	65.4	Macedonia
Rumunija	995.0	424.6	42.7	9421.3	8277.7	87.9	Romania
Ruska federacija	565.8	774.3	136.9	2189.1	1041.6	47.6	Russian Federation
Srbija <sup>2)</sup>	63493.5	38585.2	60.8	503766.4	340483.3	67.6	Serbia
Hrvatska	5096.0	7124.4	139.8	100545.4	71896.7	71.5	Croatia
Francuska	106.7	395.4	370.8	18238.2	5429.5	29.8	France
Holandija	2618.5	1944.9	74.3	15371.1	16418.5	106.8	Netherlands
Češka Republika	3468.6	1012.7	29.2	16002.0	8516.6	53.2	Czech Republic
Švajcarska	1579.1	121.7	7.7	76182.0	31891.8	41.9	Switzerland
Švedska	404.7	217.1	53.7	12190.4	1050.8	8.6	Sweden
Španija	48.5	104.0	214.5	10051.6	8014.3	79.7	Spain
Turska	132.1	56.4	42.7	18593.2	10307.9	55.4	Turkey
Ostale zemlje	10455.2	9157.6	87.6	11464.6	12526.0	109.3	Other countries
<b>Azija</b>	<b>1760.9</b>	<b>945.8</b>	<b>53.7</b>	<b>30640.7</b>	<b>16935.2</b>	<b>55.3</b>	<b>Asia</b>
Irak	874.0	0.0	0.0	0.0	0.0	0.0	Irak
Izrael	15.3	618.9	4039.5	858.0	846.2	98.6	Israel
Indija	0.0	0.0	0.0	386.2	465.7	120.6	India
Indonezija	0.0	0.0	0.0	371.8	104.0	28.0	Indonesia
Japan	56.2	11.2	19.9	808.5	706.7	87.4	Japan
Kina	126.7	22.5	17.8	22620.6	11265.4	49.8	China
Koreja	0.8	0.0	0.0	836.6	198.9	23.8	Korea
Tajland	0.0	0.0	0.0	363.7	754.5	207.5	Thailand
Hong Kong	18.3	0.0	0.0	1565.0	651.0	41.6	Hong Kong
Ostale zemlje	669.5	293.2	43.8	2830.4	1942.7	68.6	Other countries
<b>Afrika</b>	<b>243.3</b>	<b>812.7</b>	<b>334.0</b>	<b>655.0</b>	<b>527.8</b>	<b>80.6</b>	<b>Africa</b>
Egipat	169.9	599.0	352.6	456.9	316.4	69.3	Egypt
Etiopija	0.0	0.0	0.0	0.0	0.0	0.0	Ethiopia
Libijska Araps.Džamah.	0.0	0.0	0.0	0.0	0.0	0.0	Libyan Arab.Jamahiriyah
Maroko	0.0	0.0	0.0	5.6	104.5	1876.3	Morocco
Tunis	0.0	0.0	0.0	0.0	12.9	0.0	Tunis
Ostale zemlje	73.4	213.7	291.1	192.5	93.9	48.8	Other countries
<b>Amerika</b>	<b>237.9</b>	<b>286.3</b>	<b>120.4</b>	<b>20012.0</b>	<b>8333.5</b>	<b>41.6</b>	<b>America</b>
Kanada	69.1	64.7	93.6	1233.5	445.9	36.1	Canada
Panama	0.0	0.0	0.0	216.6	571.5	263.9	Panama
SAD	166.0	167.5	100.9	11869.7	2396.2	20.2	USA
Argentina	0.0	0.0	0.0	288.9	152.5	52.8	Argentina
Brazil	0.0	0.0	0.0	4538.4	3270.2	72.1	Brazil
Ekvador	0.0	0.0	0.0	920.6	1177.4	127.9	Ecuador
Kolumbija	0.0	0.0	0.0	0.0	12.7	0.0	Columbia
Peru	0.0	0.0	0.0	0.0	0.0	0.0	Peru
Devičanska ostrva	0.0	47.3	0.0	354.7	34.7	9.8	The Virgin Islands
Ostale zemlje	2.8	6.8	241.3	589.6	272.5	46.2	Other countries
<b>Australija i Okeanija</b>	<b>5.5</b>	<b>0.0</b>	<b>0.0</b>	<b>57.8</b>	<b>6.9</b>	<b>12.0</b>	<b>Australia and Oceania</b>
Australija	5.5	0.0	0.0	19.4	6.9	35.7	Australia
Novi Zeland	0.0	0.0	0.0	3.6	0.0	0.0	New Zealand
Ostale zemlje	0.0	0.0	0.0	34.8	0.0	0.0	Other countries

<sup>1)</sup> Predhodni podaci<sup>2)</sup> Za 2008 bez podataka za Kosovo i Metohiju<sup>1)</sup> Previous data<sup>2)</sup> Without data for Kosovo and Metohia in 2008



**SPOLJNA TRGOVINA / EXTERNAL TRADE**  
**Izvoz i uvoz robe, hilj. EUR / Exports and imports of goods, thous EUR**

	Izvoz / Export			Uvoz / Import			
	I - VII 2008	I - VII 2009	Indeks / Index I - VII 2009 I - VII 2008	I - VII 2008	I - VI 2009	Indeks / Index I - VII 2009 I - VII 2008	
<b>Ukupno</b>	<b>267404.4</b>	<b>163455.5</b>	<b>61.1</b>	<b>1509629.0</b>	<b>913733.8</b>	<b>60.5</b>	<b>Total</b>
Zive životinje	0.1	4.2	4228.8	9136.2	9419.6	103.1	Live animals
Meso i drugi klanični proizvodi za jelo	1510.4	1242.4	82.3	31911.4	34603.8	108.4	Meat and edible meat offal
Ribe, ljuskari, mekušci i ostali vodeni beskičmenjaci	86.5	96.3	111.3	3332.6	3066.4	92.0	Fish and crustaceans, molluscs and other aquatic invertebrates
Mlijeko i proizvodi od mlijeka, živinska i ptičja jaja, prirodni med, jestivi proizvodi životinskog porijekla, nepomenuti niti obuhvaćeni na drugom mjestu	33.9	25.4	74.9	22391.6	20826.4	93.0	Dairy produce; birds' eggs; natural honey; edible products of animal origin, not elsewhere specified or included
Proizvodi životinskog porijekla, na drugom mjestu nepomenuti niti obuhv.	2.1	2.5	115.5	218.6	183.4	83.9	Products of animal origin, not elsewhere specified or included
Živo drveće i druge biljke; lukovice, korijenje i slično; siječeno cvijeće i ukrasno lišće	0.0	6.5	0.0	2184.2	2139.1	97.9	Live trees and other plants; bulbs, roots and the like; cut flowers and ornamental foliage
Povrće, korijenje i krtole za jelo	1504.5	635.2	42.2	4842.2	4307.1	88.9	Edible veg. and certain roots and tub.
Voće za jelo, uključujući jezgrasto voće; kore agruma ili dinja i lubenica	1140.0	766.6	67.2	7184.4	6411.3	89.2	Edible fruit and nuts; peel of citrus fruits or melons
Kafa, čaj, mate čaj i začini	66.3	17.9	27.0	8160.4	8214.3	100.7	Coffee, tea, maté and spices
Žitarice	70.6	100.2	141.9	3957.5	6296.2	159.1	Cereals
Proizvodi mlinske industrije; slad; skrob; inulin; gluten od pšenice	284.0	635.5	223.8	14946.9	9167.3	61.3	Products of the milling industry; malt; starches; inulin; wheat gluten
Uljano sjemenje i plodovi; razno zrnevlje, sjeme i plodovi; industrijsko i ljekovito bilje; slama i stočna hrana (kabasta)	64.8	84.0	129.7	1037.1	988.1	95.3	Oil seeds and oleaginous fruits; miscel-laneous grains, seeds and fruit; indust-rial or medicinal plants; straw and fodd
Seljak;gume, smole i ostali biljni sokovi i ekstrakti	0.0	0.0	0.0	69.3	43.1	62.3	Lac; gums, resins and other vegetable saps and extracts
Biljni materijali za pletarstvo; biljni proiz na drugom mjestu nepomenuti niti obuh.	0.0	0.0	0.0	54.4	24.0	44.1	Vegetable plaiting materials; vegetable produc. not elsewhere specified or incl.
Masnoće i ulja životinskog ili biljnog porijekla i proizvodi njihovog razlaganja; prerađene jestive masnoće; voskovi životinskog i biljnog porijekla	39.5	152.6	386.1	10028.5	8081.9	80.6	Animal or vegetable fats and oils and their cleavage products; prepared edible fats; animal or vegetable waxes
Prerađevine od mesa, riba, ljuskara, mekušaca ili ostalih vodenih beskičmenjaka	897.6	1782.8	198.6	14559.1	12192.7	83.7	Preparations of meat, of fish or of crustaceans, molluscs or other aquatic invertebrates
Šećer i proizvodi od šećera	151.4	145.5	96.1	5517.4	4562.3	82.7	Sugars and sugar confectionery
Kakao i proizvodi od kaka	134.5	3.7	2.7	9444.1	10004.8	105.9	Cocoa and cocoa preparations
Proizvodi na bazi žitarica, brašna, skroba ili mlijeka; poslastičarski proizvodi	746.9	363.4	48.7	15448.0	14296.7	92.5	Preparations of cereals, flour, starch or milk; pastrycooks' products
Proizvodi od povrća, voća, uključujući jezgrasto voće, i ostalih dijelova bilja	84.1	379.4	451.2	13288.2	11584.3	87.2	Preparations of vegetables, fruit, nuts or other parts of plants
Razni proizvodi za ishranu	240.0	355.1	148.0	15307.0	14833.6	96.9	Miscellaneous edible preparations
Pića, alkoholi i sirće	13385.7	10498.3	78.4	34575.7	27543.3	79.7	Beverages, spirits and vinegar
Ostaci i otpaci prehrambene industrije; pripremljena hrana za životinje	0.0	110.3	0.0	8380.5	6255.7	74.6	Residues and waste from the food industries; prepared animal fodder
Duvan i proizvodi zamjene duvana	3453.2	1150.8	33.3	11481.3	12207.4	106.3	Tobacco and manuf. tobacco substitut.
So;sumpor; zemlja i kamen;gips,kreč i cement	959.7	894.7	93.2	36675.1	22202.9	60.5	Salt; sulphur; earths and stone; plastering materials, lime and cement
Rude, zgure i pepeo	1564.1	0.0	0.0	40.1	166.4	414.7	Ores, slag and ash
Mineralna goriva, mineralna ulja i proizvodi njihove destilacije;bitumenozne materije; mineralni voskovi	5152.8	3578.9	69.5	213157.3	103690.0	48.6	Mineral fuels, mineral oils and products of their distillation; bituminous substances; mineral waxes
Neorganski hemijski proizvodi; organska ili neorganska jedinjenja plemenitih metala, metala rijetkih zemlji, radioaktivnih elemenata i izotopa	20.4	12.8	62.7	5762.6	6271.4	108.8	Inorganic chemicals; organic or norga-nic compounds of precious metals, of rare-earth metals, of radioactive lemen-ts or of isotopes
Organski hemijski proizvodi	25.2	138.4	549.4	1625.5	4879.4	300.2	Organic chemicals
Farmaceutski proizvodi	4673.2	5599.3	119.8	25419.1	26687.5	105.0	Pharmaceutical products
Đubriva	0.0	0.1	0.0	2294.6	1598.8	69.7	Fertilisers
Ekstrati za štavljenje ili bojenje;tanini i njihovi derivati;boje, pigmenti i ostale materije za bojenje; boje i lakovi; kitovi i ostale zaptivne mase;mastila	21.7	42.1	193.6	16662.1	13183.7	79.1	Tanning or dyeing extracts; tannins and their derivatives; dyes, pigments and other colouring matter; paints and varnishes; putty and other mastics; inks
Eterična ulja i rezinoidi; parfimerijski, kozmetički i toaletni proizvodi	2023.1	1799.8	89.0	13598.5	11744.2	86.4	Essential oils and resinoids; perfu-mery, cosmetic or toilet preparations

**SPOLJNA TRGOVINA / EXTERNAL TRADE**  
**Izvoz i uvoz robe, hilj. EUR / Exports and imports of goods, thous EUR**

/ nastavak /

/continued /

	Izvoz / Export			Uvoz / Import			
	I - VII 2008	I - VII 2009	Indeks / Index I- VII 2009 I - VII 2008	I - VII 2008	I - VI 2009	Indeks / Index I - VII 2009 I - VII 2008	
Sapun, organska površinska aktivna sredstva, preparati za pranje, preparati za podmazivanje, vještački voskovi, pripremljeni voskovi, preparati za poliranje i čišćenje, svijeće i slični proizvodi, paste za modelovanje "zubarski voskovi" i zubarski preparati n	194.9	78.1	40.1	11043.4	9965.0	90.2	Soap, organic surface-active agents, washing preparations, lubricating preparations, artificial waxes, prepared waxes, polishing or scouring preparati-ons, candles and similar articles, modelling pastes, 'dental waxes' and dental preparatio
Bjelančevinaste materije; modifikovani skrobovi; lijepkovi; enzimi	16.9	2.3	13.7	2420.7	2027.6	83.8	Albuminoidal substances; modified starches; glues; enzymes
Eksplzivni; pirotehnički proizvodi; šibice; piroforne legure; zapaljivi preparati	574.3	165.3	28.8	463.3	278.2	60.1	Explosives; pyrotechnic products; matches; pyrophoric alloys; certain combustible preparations
Proizvodi za fotografske ili kinematografske svrhe	15.3	7.3	47.6	1115.2	712.0	63.8	Photographic or cinematographic goods
Razni proizvodi hemijske industrije	19.6	46.1	235.6	10832.5	8803.1	81.3	Miscellaneous chemical products
Plastične mase i proiz. od plastičnih masa	266.7	270.1	101.3	43002.3	29237.4	68.0	Plastics and articles thereof
Kaučuk i proizvodi od kaučuka i gume	54.7	102.1	186.7	9850.3	5915.4	60.1	Rubber and articles thereof
Sirova sitna i krupna koža, sa dlakom ili bez dlake (osim krzna) i šavljena koža	1802.1	1042.1	57.8	90.3	90.1	99.7	Raw hides and skins (other than furskins) and leather
Proizvodi od kože, sedlarski i sarački proizvodi, predmeti za putovanje, ručne torbe i slični kontejneri i proizvodi od životinjskih crijeva (osim svilenog ketguta)	41.3	39.9	96.8	4689.2	3188.5	68.0	Articles of leather; saddlery and harness; travel goods, handbags and similar containers; articles of animal gut (other than silkworm gut)
Prirodno i vještačko krzno; proizvodi od krzna	0.0	42.9	0.0	143.7	71.1	49.5	Furskins and artificial fur; manufactures thereof
Drvo i proizvodi od drveta; drveni ugalj	8139.4	6910.8	84.9	24457.7	13297.0	54.4	Wood and artic. of wood; wood charcoal
Pluta i proizvodi od plute	0.00	0.0	0.0	530.7	374.2	70.5	Cork and articles of cork
Proizvodi od slame, esparta ili ostalih materijala za pletariju; korparskih i pletarskih proizvoda	0.0	0.2	2655.3	208.1	90.6	43.6	Manufactures of straw, of esparto or of other plaiting materials; basketware and wickerwork
Celuloza od drveta ili drugih vlaknastih celuloznih materijala; hartija i karton (otpac i ostaci) za ponovnu preradu	190.3	252.6	132.7	3.8	7.0	183.1	Pulp of wood or of other fibrous cellulosic material; recovered (waste and scrap) paper or paperboard
Hartija i karton; proizvodi od hartijine pulpe, hartije ili kartona	913.9	1066.0	116.6	17258.1	15553.3	90.1	Paper and paperboard; articles of paper pulp, of paper or of paperboard
Štampane knjige, novine, slike i ostali proizvodi grafičke industrije, rukopisi, kucani tekstovi i planovi	624.3	983.7	157.6	11624.2	9701.7	83.5	Printed books, newspapers, pictures and other products of the printing ind.; manuscripts, typescripts and plans
Svila	5.4	0.0	0.0	35.6	18.3	51.4	Silk
Vuna, fina ili gruba životinjska dlaka, predivo i tkanine od konjske dlake	26.1	13.8	52.7	33.5	19.0	56.8	Wool, fine or coarse animal hair; horsehair yarn and woven fabric
Pamuk	69.3	14.2	20.6	607.5	276.0	45.4	Cotton
Ostala biljna tekstilna vlakna; predivo od hartije i tkanine od prediva od hartije	0.0	0.1	0.0	21.1	7.8	36.8	Other vegetable textile fibres; paper yarn and woven fabrics of paper yarn
Vještački ili sintetički filamenti	1.5	0.1	7.4	281.5	244.6	86.9	Man-made filaments
Vještačka ili sintetička vlakna, sječena	12.4	2.7	21.5	666.2	304.2	45.7	Man-made staple fibres
Vata, filc i netkani materijal; specijalna prediva; kanapi, užad, konopci i kablovi i proizvodi od njih	31.3	3.3	10.6	1078.6	1032.7	95.7	Wadding, felt and nonwovens; special yarns; twine, cordage, ropes and cables and articles thereof
Tepisi i ostali tekstilni podni pokrivači	13.1	8.7	66.6	2959.5	1451.9	49.1	Carpets and other textile floor cover.
Specijalne tkanine; taftovani tekstilni proizv.; čipke; tapiserije; pozamanterija, vez	3.9	2.1	55.0	134.7	49.3	36.6	Special woven fabrics; tufted textile fabri-cs; lace; tapestries; trimmings; embroid.
Tekst. tkanine, impregnisanе, premazane, prevučene, prekrivene ili laminirane, tekstilni proizvodi pogodni za tehn. svrhe	0.8	3.0	374.8	531.5	253.0	47.6	Impregnated, coated, covered or laminated textile fabrics; textile articles of a kind suitable for industrial use
Pleteni ili kukičani materijali	3.4	0.2	5.1	157.7	97.4	61.8	Knitted or crocheted fabrics
Odjeća i pribor za odjeću, pleteni ili kukičani	142.0	185.3	130.5	7116.0	6409.8	90.1	Articles of apparel and clothing accessories, knitted or crocheted
Odjeća i pribor za odjeću, osim pletenih ili kukičanih proizvoda	393.3	384.1	97.7	19303.9	15220.4	78.8	Articles of apparel and clothing accessories, not knitted or crocheted
Ostali gotovi proizvodi od tekstila; setovi, iznošena, dotrajala odjeća i dotrajali proizvodi od tekstila; krpe	54.0	19.3	35.7	4554.2	2921.9	64.2	Other made-up textile articles; sets; worn clothing and worn textile articles; rags
Obuća, kamašne i slični proizvodi; dijelovi tih proizvoda	360.2	286.2	79.5	18465.6	15268.2	82.7	Footwear, gaiters and the like; parts of such articles

**SPOLJNA TRGOVINA / EXTERNAL TRADE**  
**Izvoz i uvoz robe, hilj. EUR / Exports and imports of goods, thous EUR**

/ nastavak /

/ continued /

	Izvoz / Export			Uvoz / Import			
	I - VII 2008	I - VII 2009	Indeks / Index I - VII 2009 I - VII 2008	I - VII 2008	I - VI 2009	Indeks / Index I - VII 2009 I - VII 2008	
Šeširi, kape i ost. pokrivke za glavu i djel.	27.4	4.55	16.6	538.5	300.4	55.8	Headgear and parts thereof
Kišobrani, suncobrani, štapovi, štapovi- stolice, bičevi, korbaci i njihovi dijelovi	2.0	13.94	687.5	1192.5	579.6	48.6	Umbrellas, sun umbrellas, walking- sticks, seat-sticks, whips, riding-crops and parts thereof
Perje i paperje, preparirano i proizvodi izradjeni od perja i paperja; vještačko cvijeće; proizvodi od ljudske kose	0.0	2.13	0.0	107.2	85.1	79.4	Prepared feathers and down and arti- cles made of feathers or of down; arti- ficial flowers; articles of human hair
Proizvodi od kamena, gipsa, cementa, betona, azbesta, liskuna ili sličnih mater.	262.8	209.13	79.6	12673.4	7364.3	58.1	Articles of stone, plaster, cement, asbestos, mica or similar materials
Keramički proizvodi	131.4	203.73	155.1	36770.7	18090.8	49.2	Ceramic products
Staklo i proizvodi od stakla	72.5	14.89	20.5	10359.5	7852.5	75.8	Glass and glassware
Prirodni ili kultivisani biseri, drago ili polu- drago kamenje, plemeniti metali, metali platinirani plemenitim metalima, i proizvodi od njih; imitacije nakita; metalni novac	61.5	22.24	36.1	828.2	741.9	89.6	Natural or cultured pearls, precious or semi-precious stones, precious metals, metals clad with precious metal, and artic. thereof; imitation jewellery; coin
Gvožđe i čelik	54700.9	20297.09	37.1	67156.7	24249.9	36.1	Iron and steel
Proizvodi od gvožđa i čelika	12602.2	4,792.46	38.0	64318.2	35137.7	54.6	Articles of iron or steel
Bakar i proizvodi od bakra	4362.5	1,003.80	23.0	2337.6	997.3	42.7	Copper and articles thereof
Nikl i proizvodi od nikla	1.9	0.0	0.0	1095.2	27.7	2.5	Nickel and articles thereof
Aluminijum i proizvodi od aluminijuma	119420.7	76720.6	64.2	21556.5	13672.6	63.4	Aluminium and articles thereof
Olovo i proizvodi od olova	95.8	73.9	77.2	39.7	49.6	124.9	Lead and articles thereof
Cink i proizvodi od cinka	4.2	157.1	3756.1	298.7	194.6	65.1	Zinc and articles thereof
Kalaj i proizvodi od kalaja	0.9	0.0	0.0	10.9	5.2	47.4	Tin and articles thereof
Ostali prosti metali; kremeti; proiz. od njih	0.0	0.2	0.0	59.6	19.0	31.9	Other base metals; cermets; art. thereof
Alati, nožarski proizvodi, kašike i viljuške, od prostih metala; njihovi dijelovi od prostih metala	68.5	134.0	195.7	5209.9	2945.6	56.5	Tools, implements, cutlery, spoons and forks, of base metal; parts thereof of base metal
Razni proizvodi od prostih metala	1051.5	581.9	55.3	7278.3	4036.3	55.5	Miscellaneous articles of base metal
Reaktori, kotlovi, mašine i mehanički uredjaji i njihovi dijelovi	7449.0	10314.0	138.5	168583.0	59920.6	35.5	Reactors, boilers, machinery and mechanical appliances; parts ther.
Električne mašine i oprema i njihovi dije- lovi; aparati za snimanje i reprodukciju zvuka; televizijski aparati za snimanje i reprodukciju slike i zvuk, dijelovi i pribor za te proizvode	3478.0	1950.1	56.1	105783.3	53542.8	50.6	Electrical machinery and equipment and parts thereof; sound recorders and reproducers, television image and sound recorders and reproducers, and parts and accessories of such articles
Šinska vozila i njihovi dijelovi; željeznički i tramvajski kolosječni sklopovi i pribor i njihovi dijelovi, mehanička i elektromehanička signalna oprema za saobraćaj svih vrsta	558.7	14.3	2.6	1990.9	578.9	29.1	Railway or tramway locomotives, rolling- stock and parts thereof; railway or tramway track fixtures and fittings and parts thereof; mechanical (including electro-mechanical) traffic signalling equipment of all kinds
Vozila, osim željezničkih ili tramvajskih šinskih vozila i njihovi dijelovi i pribor	2796.9	1900.7	68.0	157192.1	47837.8	30.4	Vehicles other than railway or tramway rolling-stock, and parts and acc. Ther.
Vazduhopl., kosmičke letjelice i njihovi dj.	603.1	478.5	79.3	593.5	10282.1	1732.3	Aircraft, spacecraft, and parts thereof
Brodovi, čamci i ploveće konstrukcije	3908.3	314.4	8.0	5139.4	6662.7	129.6	Ships, boats and floating structures
Optički, fotografski, kinematografski, mjerni, kontrolni, precizni, medicinski i hirurški instrumenti i aparati; njihovi dijelovi i pribor	372.7	211.7	56.8	13172.3	17007.9	129.1	Optical, photographic, cinematograp- hic, measuring, checking, precision, medical or surgical instruments and apparatus; parts and accessories ther.
Časovnici i njihovi dijelovi	30.6	6.7	22.0	1627.2	890.2	54.7	Clocks and watches and parts thereof
Muzički instrumenti, dijelovi i pribor ovih proizvoda	4.3	2.8	65.0	189.9	371.1	195.4	Musical instruments; parts and accessories of such articles
Namještaj, posteljina, madraci, nosači madraca, jastuci i slični punjeni proizvodi; lampe i druga svjetleća tijela, na drugom mjestu nepomenuti ili uključeni; osvjetljeni znaci, osvjetljene pločice imenima i slično, montažne zgrade	1080.6	518.3	48.0	55464.4	31403.0	56.6	Furniture; bedding, mattresses, mattress supports, cushions and similar stuffed furnishings; lamps and lighting fittings, not elsewhere specified or included; illuminated signs, illuminated name- plates and the like; prefabricated build.
Igračke, rekviziti za društvene igre i sport; njihovi dijelovi i pribor	105.8	138.6	131.0	8563.4	4728.4	55.2	Toys, games and sports requisites; parts and accessories thereof
Razni proizvodi	8.7	11.6	132.8	2055.9	1928.8	93.8	Miscellaneous manufactured articles
Predmeti umjetnosti, kolekcija i starina	173.4	256.3	147.8	139.8	58.4	41.8	Works of art, collectors' pieces and ant.
Nerazvrstani	1660.8	548.9	33.1	930.2	1607.0	172.8	Other

## UNUTRAŠNJA TRGOVINA / DOMESTIC TRADE

## PROMET U TRGOVINI NA MALO / TURNOVER IN RETAIL TRADE

Ø 2008 = 100

	Indeks <sup>1)</sup> / Index	PROMET u hilj.EUR / Turnover in thous. EUR
2006	62.1	581942
2007	86.2	808258
2008	100	937340
Ø I - VI 2008	88.5	69113
Ø I - VI 2009	82.2	64199
2008		
VI	116.7	91173
VII	124.5	97253
VIII	125.6	98055
IX	124.3	97105
X	102.0	79666
XI	84.2	65775
XII	108.6	84810
2009 <sup>2)</sup>		
I	74.1	57894
II	76.5	59756
III	75.2	58774
IV	87.5	68329
V	86.2	67321
VI	93.6	73123
I-VI 2009/I-VI 2008	92.9	92.9

<sup>1)</sup> Indeks prometa po tekućim cijenama.<sup>2)</sup> Prethodni podaci<sup>1)</sup> Index of turnover at current prices.<sup>2)</sup> Preliminary data

PROMET U TRGOVINI NA MALO / TURNOVER IN RETAIL TRADE							
	PROMET u hilj. EUR <i>Turnover in thous. EUR 2009</i>	tekući mjesec na prethodni <i>Current month compared to the previous month</i>		mjesec 2009. na isti mjesec 2008. <i>Month in 2009 compared to the same month 2008</i>		mjesec 2009. na Ø 2008 <i>Month in 2009 to Ø 2008</i>	
		indeks prometa u tekućim cijenama <i>Index of turnover at current prices</i>	indeks prometa u stalnim cijenama <i>Index of turnover at constant prices</i>	indeks prometa u tekućim cijenama <i>Index of turnover at current prices</i>	indeks prometa u stalnim cijenama <i>Index of turnover at constant prices</i>	indeks prometa u tekućim cijenama <i>Index of turnover at current prices</i>	indeks prometa u stalnim cijenama <i>Index of turnover at constant prices</i>
2009 <sup>1)</sup>							
I	57894	68.3	68.5	122.9	124.0	74.1	73.4
II	59756	103.2	103.4	99.7	97.4	76.5	75.9
III	58774	98.4	98.5	85.9	84	75.2	74.6
IV	68329	116.3	116.8	96.4	95.2	87.5	86.9
V	67321	98.5	98.6	87.2	86.4	86.2	85.7
VI	73123	108.6	108.7	80.2	79.7	93.6	93.02

<sup>1)</sup> Prethodni podaci<sup>1)</sup> Preliminary data

**PRODAJA I OTKUP PROIZVODA POLJOPRIVREDE, ŠUMARSTVA I RIBARSTVA**  
**SALE AND BUYING OUT OF PRODUCTS FROM AGRICULTURE, FORESTRY AND FISHERY**

U hiljadama EUR

In thousands EUR

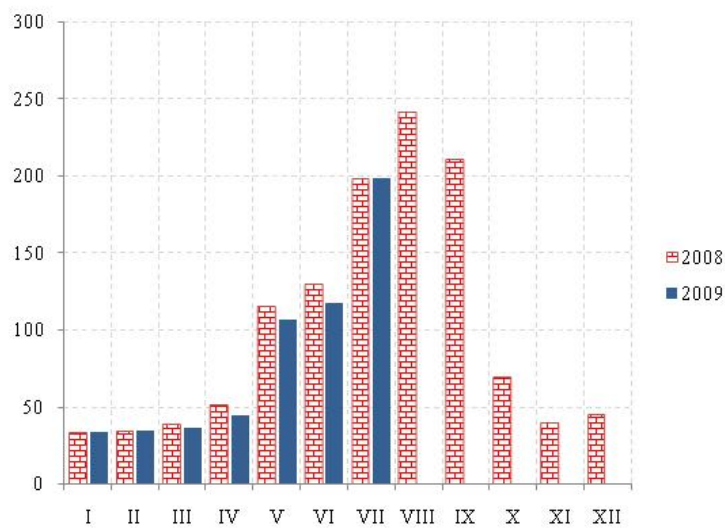
	Indeks <i>Index</i> Ø 2008 =100	Ukupna vrijednost <i>Total value</i>	Poljoprivreda i šumarstvo / <i>Agriculture and forestry</i>				
			žita <i>Cereals</i>	industrijsko bilje <i>Industrial crops</i>	povrće <sup>1)</sup> <i>Vegetables</i>	voće <i>Fruit</i>	grožđe <i>Vine</i>
2004	62.5	12641	13	809	245	1429	1392
2005	77.6	15689	2	1032	146	1128	1480
2006	76.3	15422	11	-	142	1127	1208
2007	81.8	16523	-	831	284	1000	1778
2008	100.0	20198	1	-	491	1749	1897
Ø I - VII 2008	69.6	1171	-	-	40	121	64
Ø I - VII 2009	80.6	1358	-	43	25	71	74
2008							
VII	122.4	2061	-	-	116	360	446
VIII	200.2	3369	-	-	111	488	1167
IX	138.9	2337	-	-	-	-	285
X	156.3	2630	-	-	23	79	-
XI	115.4	1942	-	-	37	53	-
XII	102.1	1718	-	-	15	276	-
2009							
I	77.3	1302	-	301	21	5	-
II	63.5	1070	-	-	36	-	-
III	64.2	1082	-	-	9	-	-
IV	73.7	1241	-	-	7	-	-
V	71.0	1195	-	-	12	-	-
VI	104.5	1760	-	-	7	483	-
VII	110.3	1857	-	-	83	7	518
I-VII 2009/I-VII 2008	115.9	115.9	-	-	62.0	58.4	116.1

/ nastavak /

/ continued /

	Poljoprivreda i šumarstvo / <i>Agriculture and forestry</i>						Ribarstvo <i>Fishery</i>
	preradevine voća i grožđa <i>Products of fruit and vine</i>	Stoka <i>Livestock</i>	živina i jaja <i>Poultry and eggs</i>	mlijeko i mliječni proizvodi <i>Milk and milk products</i>	koža i vuna <i>Leather and wool</i>	ostali proizvodi <i>Other products</i>	riba svježa <i>Fresh fish</i>
2004	76	2723	1192	3767	10	638	347
2005	67	4762	814	4762	8	1173	315
2006	100	5437	732	5379	-	969	317
2007	171	5912	800	4640	-	810	297
2008	189	8017	1082	5204	-	1312	256
Ø I - VII 2008	5	349	78	434	-	64	16
Ø I - VII 2009	3	490	142	385	-	22	103
2008							
VII	-	489	102	490	-	42	16
VIII	31	540	102	508	-	400	22
IX	101	860	103	479	-	460	20
X	-	1936	104	464	-	-	24
XI	-	1320	115	388	-	3	26
XII	19	914	114	332	-	-	48
2009							
I	-	439	114	356	-	-	66
II	-	438	116	412	-	-	68
III	8	482	102	351	-	24	106
IV	-	502	195	348	-	53	136
V	5	506	144	384	-	45	99
VI	10	517	189	399	-	35	120
VII	-	549	131	445	-	-	124
I-VII 2009/I-VII 2008	60.5	140.3	48.1	88.8	-	35.0	630.7

<sup>1)</sup> Uključeni i krompir i pasulj.<sup>1)</sup> includes potatoes and beans.

**UGOSTITELJSTVO / CATERING****Promet u ugostiteljstvu / Turnover in catering**

Ø 2008 = 100

	Indeks <sup>1)</sup> <i>Index</i>	Promet u hilj. EUR <i>Turnover in thousands EUR</i>
2004	41.6	59383
2005	45.9	65552
2006	90.1	128720
2007	95.2	136039
2008	100	142833
Ø I - VII 2008	85.2	10144
Ø I - VII 2009	80.8	9619
2008		
VII	197.6	23514
VIII	241.3	28718
IX	210.0	25000
X	68.5	8153
XI	38.7	4602
XII	44.9	5354
2009		
I	30.3	3601
II	34.1	4055
III	36.2	4311
IV	44.1	5244
V	106.1	12633
VI	116.7	13888
VII	198.3	23602
<b>I-VII 2009/I-VII2008</b>	<b>94.8</b>	<b>94.8</b>

**TURIZAM / TOURISM****Dolasci i noćenja turista po zemljama i prema vrsti mjesta***Tourist arrivals and tourist overnight stays by country and type of resort*

	2008	Kumulativ I - VII		2009			
		2008	2009	V	VI	VII	
<b>Dolasci turista</b>							<i>Tourist arrivals</i>
<b>Ukupno</b>	<b>1188116</b>	<b>609762</b>	<b>582238</b>	<b>75346</b>	<b>114132</b>	<b>306397</b>	<i>Total</i>
Domaći	156904	90965	82403	12604	13659	33096	<i>Domestic</i>
Strani	1031212	519067	499835	62742	100473	273301	<i>Foreigners</i>
<b>Noćenja turista – ukupno</b>	<b>7794741</b>	<b>3696114</b>	<b>3455291</b>	<b>359454</b>	<b>741614</b>	<b>1974061</b>	<i>Tourist overnight stays – total</i>
<b>Noćenja domaćih turista</b>	828462	433513	406822	51364	67059	196177	<i>Overnight stays of domestic tourists</i>
<b>Noćenja stranih turista</b>	<b>6966279</b>	<b>3262601</b>	<b>3048469</b>	<b>308090</b>	<b>674555</b>	<b>1777884</b>	<i>Overnight stays of foreigners</i>
Albanija	154227	68130	85881	12632	9985	49352	<i>Albania</i>
Austrija	102367	81084	29039	7462	4588	12469	<i>Austria</i>
Belgija	48343	30569	22453	8036	5875	3826	<i>Belgium</i>
Bosna i Hercegovina	18459	404243	396963	31071	72825	213836	<i>Bosnia and Herzegovina</i>
Bugarska	241484	11509	10862	4925	1109	3265	<i>Bulgaria</i>
Češka Republika	6983	112301	71079	2041	19272	45214	<i>Czech Republic</i>
Danska	10382	4890	3167	246	262	2079	<i>Danmark</i>
Finska	12176	4213	5561	802	2832	1593	<i>Finland</i>
Francuska	143226	71959	87288	16497	23092	40840	<i>France</i>
Grčka	12087	6162	2645	434	582	789	<i>Greece</i>
Holandija	33643	18874	19257	3950	1259	9285	<i>Netherlands</i>
Hrvatska	82356	26595	30869	4508	7261	10707	<i>Croatia</i>
Italija	151396	55314	82506	5459	14532	52660	<i>Italy</i>
Mađarska	187695	57743	73574	1803	16865	49575	<i>Hungary</i>
Makedonija	230249	105276	88928	11021	15033	40331	<i>Macedonia</i>
Norveška	60340	29908	25381	7209	7501	9280	<i>Norway</i>
Njemačka	137146	58515	48351	13494	13304	15396	<i>Germany</i>
Poljska	85424	31926	52165	3011	7780	40466	<i>Poland</i>
Rumunija	15758	6047	11203	583	3151	6763	<i>Romania</i>
Rusija	899898	401121	471963	75664	137541	237353	<i>Russia</i>
Slovačka	76260	35074	25201	267	6807	17673	<i>Slovakia</i>
Slovenija	79066	33667	38954	3998	9321	20635	<i>Slovenia</i>
Srbija <sup>1)</sup>	2877464	1391571	1025921	61267	229402	677588	<i>Serbia<sup>1)</sup></i>
Švajcarska	12922	8111	7103	1034	875	4532	<i>Switzerland</i>
Švedska	55394	36282	26151	5109	7656	12605	<i>Sweden</i>
Ukrajina	181197	51687	3142	2261	9066	18876	<i>Ukraine</i>
Velika Britanija	75257	41280	35358	10664	11723	7323	<i>Great Britain</i>
Ostale evropske zemlje	116592	40747	199570	7288	21727	158738	<i>Other European countries</i>
Izrael	9329	4767	11817	1762	5093	4576	<i>Israel</i>
Kanada	6696	3694	2803	319	681	1491	<i>Canada</i>
SAD	21404	11854	12602	1954	3481	4721	<i>USA</i>
Ostale vanevropske zemlje	26727	17488	12712	2965	4074	4047	<i>Other non-European countries</i>
<b>Noćenja po vrstama mjesta – ukupno</b>	<b>7794741</b>	<b>3696114</b>	<b>3455291</b>	<b>359454</b>	<b>741614</b>	<b>1974061</b>	<i>Overnight stays by type of tourist resorts – total</i>
Glavni administrativni centar	111271	68891	60958	7713	12219	12350	<i>Main administrative center</i>
Primorska	7459794	3485644	3273465	336828	707176	1932813	<i>Coastal</i>
Planinska	102560	65037	58878	7352	9622	15974	<i>Mountain</i>
Ostala turistička mjesta	120680	76363	61149	7427	12451	12550	<i>Other tourist resorts</i>
Ostala mjesta	434	179	841	134	146	374	<i>Other places</i>
<b>Primorska mjesta</b>							<i>Coastal resorts</i>
Bar	1012543	506224	468401	58758	109287	246420	<i>Bar</i>
Budva	3291938	1443326	1397955	164738	337726	801750	<i>Budva</i>
Kotor	345427	137989	115100	6017	16975	85190	<i>Kotor</i>
Tivat	275495	142818	106882	6340	25733	61974	<i>Tivat</i>
Ulcinj	661258	303735	288878	9535	41810	226772	<i>Ulcinj</i>
Herceg Novi	1873133	951552	896249	91440	175645	510707	<i>Herceg Novi</i>

**TURIZAM / TOURISM****DOLASCI I NOĆENJA GOSTIJU PO VRSTAMA TURISTIČKIH MJESTA  
TOURIST ARRIVALS AND TOURIST OVERNIGHT STAYS BY TYPE OF PLACE**

	Dolasci / Arrivals					Noćenja / Nights				
	glavni grad <i>Capital</i>	primorska mjest <i>Coastal resorts</i>	planinska mjest <i>Mountain resorts</i>	ostala turistička mjest <i>Other tourist resorts</i>	ostala mjest <i>Other places</i>	glavni grad <i>Capital</i>	primorska mjest <i>Coastal resorts</i>	planinska mjest <i>Mountain resorts</i>	ostala turistička mjest <i>Other tourist resorts</i>	ostala mjest <i>Other places</i>
2004	24580	639980	18529	20285	110	44750	4396888	54583	64763	110
2005	29819	747734	19185	23599	120	53886	5022260	53577	82003	121
2006	39295	859904	26362	28144	223	74169	5691770	68424	101677	230
2007	45588	1010742	39158	37642	302	104986	6961444	105892	121871	337
2008	50393	1058825	38304	40229	365	111271	7459794	102560	120682	434
Ø I - VII 2008	4170	76072	3372	3472	23	9842	497949	9291	10909	26
Ø I - VII 2009	3951	72845	3394	2929	59	8708	467638	8411	8736	120
2008										
VII	4677	297571	4860	4983	54	11189	2026674	12981	14908	54
VIII	3237	356522	5214	5254	66	6448	2786371	16143	15403	96
IX	5360	126392	3401	3772	71	11230	896934	7965	9567	81
X	4543	24561	2195	2985	20	9420	157303	4598	8910	20
XI	4364	9578	1545	2201	29	8440	78721	4041	6416	36
XII	3702	9271	2344	1711	16	6842	54821	4776	4023	22
2009										
I	2924	8806	3928	1887	19	7699	55637	13553	7482	27
II	3582	11973	2580	1840	13	7126	69010	5968	6773	19
III	4279	10124	1829	2841	14	8492	64217	3611	6952	14
IV	2962	22520	1466	2696	80	5359	107784	2798	7514	127
V	4189	64173	3832	3079	73	7713	336828	7352	7427	134
VI	5072	100485	4486	4007	82	12219	707176	9622	12451	146
VII	4646	291835	5634	4150	132	12350	1932813	15974	12550	374
I-VII 2009/I-VII 2008	94.7	95.7	100.6	84.4	256.5	88.5	93.9	90.5	80.1	461.5

**DOLASCI I NOĆENJA TURISTA / TOURIST ARRIVALS AND TOURIST OVERNIGHT STAYS**

	Dolasci/Arrivals			Noćenja / Nights		
	ukupno / Total	domaći / Domestic	strani / Foreign	ukupno / Total	domaći / Domestic	strani / Foreign
2004	703484	515424	188060	4561094	3337247	1223847
2005	820457	548452	272005	5211847	3628337	1583510
2006	953928	576130	377798	5936270	3740179	2196091
2007	1133432	149294	984138	7294530	851045	6443485
2008	1188116	156904	1031212	7794741	828462	6966279
Ø I - VII 2008	87109	12956	74152	528016	61930	466086
Ø I - VII 2009	83177	11772	71405	493613	58117	439456
2008						
VII	312145	28894	283251	2065806	156920	1908886
VIII	370293	32723	337570	2824461	238192	2586269
IX	138996	17473	121523	925777	99420	826357
X	34304	6633	27671	180251	29183	151068
XI	17717	4087	13630	97654	16196	81458
XII	17044	5293	11751	70484	11958	58526
2009						
I	17564	6430	11134	84398	25279	59119
II	19988	5562	14426	88896	22507	66389
III	19087	4375	14712	83286	17711	65575
IV	29724	6677	23047	123582	26725	96857
V	75436	12604	62742	359454	51364	308090
VI	114132	13659	100473	741614	67059	674555
VII	306397	33096	273301	1974061	196177	1777884
I-VII 2009/I-VII 2008	95.5	90.9	96.3	93.5	93.8	94.3

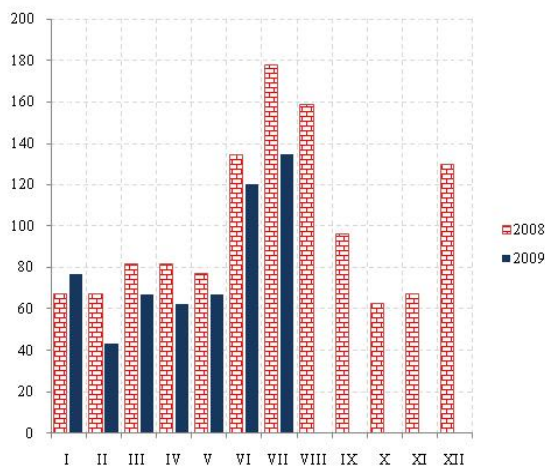


# **SAOBRAĆAJ, SKLADIŠTENJE I VEZE** **TRANSPORT, STORAGE AND COMMUNICATIONS**

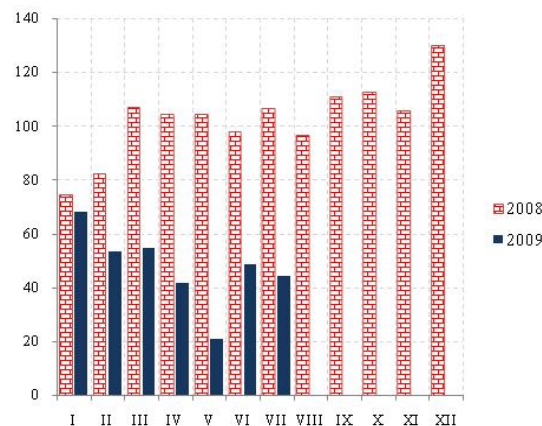
## **Željeznički saobraćaj / Railway transport**

Ø 2008 = 100

**Putnički / Passengers**



**Robni / Goods**

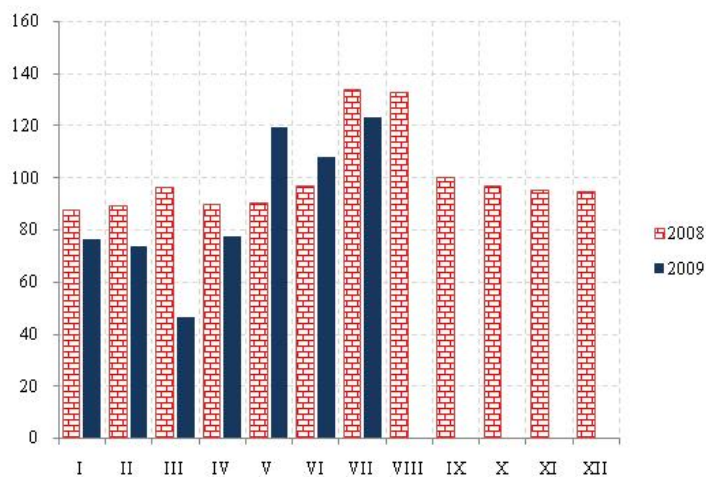


	ŽELJEZNIČKI SAOBRAĆAJ / RAILWAY TRANSPORT					
	Putnički / Passenger			Robni / Goods		
	indeks Index	putnici u 000 Passengers, thousands	putnički km u 000 Passenger kilometres in thousands	Indeks Index	prevoz robe u 000 t Goods in thousands tonnes	tonski km u 000 Tonne-kilometres in thousands
2004	103.7	1066	129600	50.3	1006	92502
2005	98.3	1137	122920	72.5	1182	132782
2006	105.2	1067	131500	99.0	2494	182163
2007	88.0	999	110000	100.6	1761	184957
2008	100.0	1031	125000	100.0	1740	183854
Ø I - VII 2008	98.0	92	10214	95.4	145	14622
Ø I - VII 2009	81.6	70	8500	47.2	64	7227
2008						
VII	177.6	164	18500	97.9	146	15000
VIII	158.4	130	16500	106.4	154	16300
IX	96.0	80	10000	96.5	128	14786
X	62.4	50	6500	110.7	149	16966
XI	67.2	60	7000	112.6	158	17251
XII	129.6	67	13500	105.7	136	16199
2009						
I	76.7	70	8000	68.0	88	10411
II	43.2	37	4500	53.1	58	8137
III	67.2	50	7000	54.4	80	8333
IV	62.4	50	6500	41.5	55	6360
V	67.2	65	7000	20.6	57	3162
VI	120.0	100	12500	48.6	57	7445
VII	134.4	120	14000	44.0	52	6743
I-VII 2009/I-VII 2008	83.2	76.0	83.2	49.4	44.1	49.4

**SAOBRAĆAJ, SKLADIŠTENJE I VEZE**  
**TRANSPORT, STORAGE AND COMMUNICATIONS**

**Drumski saobraćaj - Putnički / Road transport - passengers**

Ø 2008 = 100

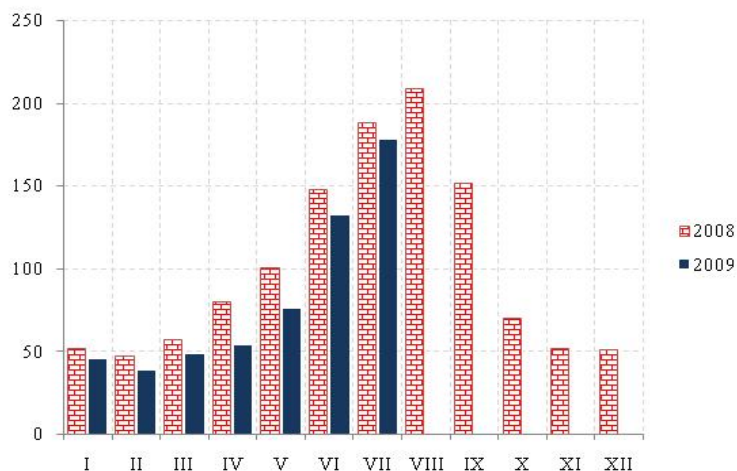


	DRUMSKI SAOBRAĆAJ / ROAD TRANSPORT							
	PUTNIČKI / PASSENGERS				ROBNI / GOODS			
	indeks Index	putnici u 000 Passengers, thous.	putnički km u 000 Passenger kilometres in thous.	autobuski km u 000 Bus kilometres in thous	indeks Index	roba u 000 tona Goods in thousands tonnes	tonski km u 000 Tonne- kilometres in thous.	kamionski km u 000 Truck kilometres in thous.
2004	81.5	4488	100620	11472	47.0	1639	64508	9332
2005	68.7	4302	84883	9593	44.5	1857	61100	9365
2006	93.0	4825	114695	16809	53.0	1961	72724	15167
2007	114.4	5738	141247	17630	67.0	2131	91786	16269
2008	100.0	5503	123421	18068	100.0	2468	137058	14857
Ø I - VII 2008	97.5	426	10027	1427	108.0	196	12335	1220
Ø I - VII 2009	89.1	461	9164	1327	125.5	161	14337	1005
2008								
VII	133.8	651	13760	1911	90.8	210	10374	1305
VIII	132.4	693	13614	1920	94.0	228	10734	1330
IX	99.6	563	10243	1734	91.2	248	10413	1311
X	96.6	449	9940	1539	86.1	208	9833	1325
XI	94.8	382	9746	1427	86.0	214	9827	1238
XII	94.2	434	9688	1457	86.6	197	9903	1110
2009								
I	76.1	370	7833	1093	75.0	160	8571	994
II	73.4	414	7545	1188	108.3	186	12365	1015
III	46.3	234	4763	894	108.3	196	12370	1016
IV	77.4	583	7960	1370	101.6	185	11601	1080
V	119.2	567	12262	1659	194.7	125	22237	998
VI	108.0	463	11107	1509	147.1	125	16800	904
VII	123.2	598	12677	1586	143.7	147	16417	1025
I-VII 2009/I-VII 2008	91.4	108.2	91.4	93.0	116.2	82.1	116.2	82.3

**SAOBRAĆAJ, SKLADIŠTENJE I VEZE**  
**TRANSPORT, STORAGE AND COMMUNICATIONS**

Ø 2008 = 100

**Vazdušni saobraćaj - putnički / Air transport - passengers**



	GRADSKI SAOBRAĆAJ LOCAL TRANSPORT		VAZDUŠNI SAOBRAĆAJ, PROMET NA AERODROMIMA AIR TRANSPORT, TRAFFIC AT AIRPORTS		
			PUTNIČKI / PASSENGERS		ROBNI / GOODS
	indeks Index	prevezeno putnika u 000 Passengers in thousands	indeks Index	prevoz putnika Transport of passengers	prevoz robe u tonama Transport of goods in tonnes
2004	172.7	2673	59.9	664801	647
2005	140.7	2177	62.9	697740	1011
2006	102.8	1591	75.1	833715	1067
2007	96.3	1491	92.3	1024491	1320
2008	100.0	1547	100.0	1109095	1490
Ø I - VII 2008	83.0	107	95.6	88401	146
Ø I - VII 2009	37.2	48	81.4	75257	81
2008					
VII	94.5	122	188.0	173801	109
VIII	104.6	135	208.4	192635	69
IX	122.6	158	151.1	139637	81
X	122.6	158	69.3	64011	116
XI	122.6	158	51.5	47555	108
XII	145.1	187	50.3	46453	90
2009					
I	38.7	50	45.3	41882	47
II	43.4	56	38.4	35489	112
III	43.4	56	48.1	44424	65
IV	38.0	49	53.6	49502	83
V	38.0	49	75.7	69983	63
VI	20.9	27	131.5	121559	83
VII	20.2	26	177.4	163959	111
<b>I-VII 2009/I-VII 2008</b>	<b>44.8</b>	<b>45.0</b>	<b>85.1</b>	<b>85.1</b>	<b>55.5</b>

SAOBRAĆAJ, SKLADIŠTENJE I VEZE / *TRANSPORT, STORAGE AND COMMUNICATIONS*POMORSKI SAOBRAĆAJ / *MARINE TRANSPORT*

	Prevoz robe / <i>Transport of goods</i>			Promet u lukama ( u tonama ) / <i>Turnover in harbours (tonnes)</i>				
	Indeks <i>Index</i>	u 000 t <i>In thous. tonnes</i>	tonske milje u mil. <i>Tonne milles in millions</i>	Indeks <i>Index</i>	ukupno <i>Total</i>	unutrašnji promet <i>Internal turnover</i>	izvoz <sup>1)</sup> <i>Export</i>	uvoz <sup>2)</sup> <i>Import</i>
2005	65.9	60	232	104.6	2039211	442	1166959	851211
2006	1079	818	380	102.0	1988204	116	1027208	941905
2007	115.9	785	408	106.3	2071310	1825	791509	1280327
2008	100	595	352	100	1949409	8350	683990	1219948
Ø I - VI 2008	92.2	48	27	98.8	160555	1193	56281	102042
Ø I - VI 2009	68.3	45	20	81.5	132423	-	51482	70971
2008								
VII	228.6	54	67	99.2	161199	-	49864	108149
VIII	191.1	57	56	97.2	157735	-	57521	91525
IX	153.6	57	45	112.5	182685	-	59765	122231
X	78.5	56	23	105.2	170847	-	64523	103612
XI	75.1	56	22	95.2	154521	-	61835	92686
XII	54.6	30	16	98.0	159137	-	46380	95598
2009								
I	51.2	37	15	79.3	128880	-	55633	70514
II	47.8	45	14	72.9	118436	-	51933	64956
III	61.4	43	18	78.8	127957	-	43107	84850
IV	37.5	42	11	73.0	118617	-	42209	69515
V	58.0	49	17	74.8	121454	-	47305	72909
VI	41.0	51	12	76.2	123852	-	57424	65095
VII	1775	45	52	82.3	133767	-	62765	68956
I-VII 2009/I-VII 2008	73.2	92.0	73.3	82.5	82.5	-	91.5	69.6

<sup>1)</sup>Tranzit utovar prikazan kod izvoza <sup>2)</sup>Tranzit istovar prikazan kod uvoza / <sup>1)</sup>Transit loading presented in export. <sup>2)</sup>Transit loading presented in import.

P T T SAOBRAĆAJ / *POSTAL, TELEGRAPH AND TELEPHONE (PTT) COMMUNICATIONS*

	Poštanske usluge / <i>Postal services</i>		Telegrafske usluge / <i>Telegraph services</i>		Telefonske usluge / <i>Telephone services</i>	
	pisma u 000 komada <i>Letters in thousands pcs.</i>	paketi u 000 komada <i>Packages in thousands pcs.</i>	uputnice u 000 komada <i>Postal orders in thousands pcs.</i>	tegr. u 000 komada <i>Telegraphs in thousands pcs.</i>	fiksna telefonija <i>Fixed telephony</i>	mobilna telefonija <i>Mobile telephony</i>
					minuti u 000 <i>Minutes in thous.</i>	minuti u 000 <i>Minutes in thous.</i>
2005	16185	56	65	572	876231	-
2006	17396	30	45	581	862596	488802
2007	18291	23	44	589	864471	660168
2008	20521	25	37	507	650567	1027704
Ø I - VII 2008	1664	2	3	43	54560	83403
Ø I - VII 2009	1684	2	3	41	42622	94724
2008						
VII	1489	2	4	41	72421	88210
VIII	1669	2	3	41	81301	86975
IX	1843	2	3	40	54044	83692
X	1630	2	3	43	46013	88843
XI	1728	2	3	35	43211	84952
XII	2000	3	3	45	44081	99420
2009						
I	1722	2	2	43	42304	88991
II	1620	2	3	40	39124	96414
III	1661	2	3	47	42082	92185
IV	1599	2	3	40	37672	90754
V	1704	2	3	36	36488	95900
VI	1653	2	3	40	39645	96173
VII	1827	3	3	36	61040	102649
I-VII 2009/I-VII 2008	101.2	100.0	100.0	95.3	78.1	114.0

**MONETARNI AGREGATI ( Novčana masa )**  
**MONETARY AGGREGATES ( MONEY SUPPLY )**

u hilj. EUR, stanje na kraju perioda

balance at end-periods, EUR thous.

	M0	Depoziti po videnju <sup>1)</sup> <i>Demand deposits<sup>1)</sup></i>	M1	Depoziti po videnju <sup>2)</sup> <i>Demand deposits<sup>2)</sup></i>	M11	Oročeni Depoziti <sup>1)</sup> <i>Time deposits<sup>1)</sup></i>	M2	Oročeni depoziti <sup>2)</sup> <i>Time deposits<sup>2)</sup></i>	M21
	1	2	3 ( 1+2 )	4	5 ( 1+4 )	6	7 ( 3+6 )	8	9 ( 5+8 )
2004	290.935	139.722	430.657	146.179	437.114	104.891	535.548	109.411	546.525
2005 <sup>3)</sup>	351.276	244.991	596.267	263.445	614.721	205.989	802.256	252.573	867.294
2006 <sup>3)</sup>	483.889	594.884	1.078.773	614.641	1.098.530	428.293	1.507.066	488.124	1.586.654
2007 <sup>3)</sup>	592.457	941.689	1.534.146	963.346	1.555.803	1.070.459	2.604.605	1.170.747	2.726.550
2008									
I	568.024	875.911	1.443.935	921.589	1.489.613	1.083.590	2.527.525	1.196.399	2.686.012
II	572.768	895.204	1.467.972	926.508	1.499.276	1.154.205	2.622.177	1.275.643	2.774.919
III	544.844	876.680	1.421.524	917.276	1.462.120	1.168.272	2.589.796	1.293.521	2.755.641
IV	557.556	876.888	1.434.444	915.855	1.473.411	1.227.037	2.661.481	1.353.224	2.826.635
V	562.695	894.894	1.457.589	931.790	1.494.485	1.228.598	2.686.187	1.373.146	2.867.631
VI	558.440	891.699	1.450.139	931.076	1.489.516	1.275.791	2.725.930	1.430.535	2.920.051
VII	568.688	859.980	1.428.668	894.319	1.463.007	1.311.616	2.740.284	1.488.295	2.951.302
VIII	580.668	876.748	1.457.416	915.541	1.496.209	1.357.738	2.815.154	1.545.620	3.041.829
IX	566.751	845.474	1.412.225	883.593	1.450.344	1.321.702	2.733.927	1.517.673	2.968.017
X	508.596	752.899	1.261.495	790.861	1.299.457	1.230.144	2.491.639	1.382.573	2.682.032
XI	506.040	700.749	1.206.789	737.731	1.243.771	1.174.204	2.380.993	1.300.566	2.544.337
XII	512.417	673.238	1.185.655	696.126	1.208.543	1.111.654	2.297.309	1.130.054	2.338.597

IZVOR: Centralna banka Crne Gore

<sup>1)</sup> Bez depozita Vlade Crne Gore<sup>2)</sup> Uključujući depozite Vlade Crne Gore<sup>3)</sup> Stanje na 31. XII

SOURCE: Central bank of Montenegro

<sup>1)</sup> Without Government deposits<sup>2)</sup> Including Government deposits<sup>3)</sup> Balance as at 31 December

**DEPOZITI STANOVNIŠTVA / DEPOSITS BY HOUSEHOLDS**

u mil. EUR, stanje na kraju perioda

balance at end-periods, EUR mill..

	Depoziti po videnju <i>Demand deposits</i>	Oročeni depoziti / Time deposits					Ukupno <i>Total</i>
		do 3 mjeseca <i>Up to 3 months</i>	od 3 mjeseca do godinu dana <i>From 3 months to 1 years</i>	od 1 do 3 godine <i>From 1 to 3 years</i>	preko 3 godine <i>Over 3 years</i>	ukupno <i>Total</i>	
2004	40,1	5,1	29,7	4,4	0,1	39,2	79,3
2005 <sup>1)</sup>	93,5	7,6	55,0	19,4	0,3	82,2	175,7
2006 <sup>1)</sup>	294,4	25,8	114,1	64,8	0,3	205,0	499,4
2007 <sup>1)</sup>	466,0	145,6	278,3	121,4	8,0	553,1	1019,4
2008							
V	438.7	168.5	313.6	151.6	10.4	644.1	1.083.0
VI	410.2	163.1	330.1	146.6	21.5	664.8	1.075.4
VII	416.9	154.9	330.2	175.3	33.6	694.0	1.110.9
VIII	418.7	168.7	352.2	159.1	24.4	704.4	1.123.1
IX	410.6	166.4	359.6	153.8	23.7	703.5	1.114.1
X	331.5	121.2	337.5	157.2	34.7	650.6	982.1
XI	298.9	87.7	259.5	228.3	23.4	599.0	898.1
XII	302.5	91.0	224.5	221.8	16.5	553.8	856.5
2009							
I	288.0	83.7	233.2	200.4	16.7	534.0	822.3
II	270.8	76.8	237.0	192.0	16.3	522.1	792.8
III	281.5	127.7	249.2	107.6	14.5	499.0	780.6
IV	256.6	135.1	264.7	92.0	14.0	505.8	762.4
V	248.7	140.9	254.2	89.2	14.0	498.3	747.0

IZVOR: Centralna banka Crne Gore

<sup>1)</sup> Stanje na 31.XII

SOURCE: Central Bank of Montenegro

<sup>1)</sup> Balance on 31 December

PLATNI BILANS CRNE GORE <sup>1)</sup> u hilj.EUR / *BALANCE OF PAYMENTS OF MONTENEGRO* <sup>1)</sup> EUR thous

Kvartali Quarters	A  Ukupno Total	TEKUĆI RAČUN / <i>Current account</i>							
		1 ( 1.1 - 1.2) Roba / <i>Goods</i>		2 ( 2.1 - 2.2) Usluge / <i>Services</i>		3 ( 3.1 - 3.2) Dohoci / <i>Income</i>		4 ( 4.1 - 4.2) Tekući transferi <i>Current transfers</i>	
		izvoz <i>Export</i>	uvoz <i>Import</i>	prihodi <i>Revenues</i>	rashodi <i>Expenditures</i>	prihodi <i>Revenues</i>	rashodi <i>Expenditures</i>	prihodi <i>Revenues</i>	rashodi <i>Expenditures</i>
	(1+2+3+4)	1.1	1.2	2.1	2.2	3.1	3.2	4.1	4.2
2006	-531.207	648.327	1.497.651	418.036	220.937	65.334	34.534	108.555	18.336
I	-137.180	110.753	267.505	33.287	47.768	7.921	6.809	36.231	3.290
II	-193.632	169.946	404.970	70.317	58.364	17.544	9.370	24.031	2.766
III	-208	188.023	414.686	258.964	62.561	18.958	7.214	23.106	4.797
IV	-200.186	179.604	410.489	55.468	52.245	20.910	11.141	25.187	7.482
2007	-825.110	659.734	2.001.380	674.056	233.923	89.420	72.410	100.775	41.381
I	-125.275	153.887	303.794	49.268	45.215	20.148	12.905	23.281	9.946
II	-220.216	169.610	474.061	119.309	52.662	21.312	16.412	24.731	12.043
III	76.854	171.738	480.518	425.768	57.774	22.733	19.246	22.189	8.036
IV	-556.474	164.498	743.008	79.710	78.272	25.228	23.847	30.574	11.357
2008	-975,762	529,586	1,970,656	753,365	351,196	110,637	120,570	109,321	36,248
I	-308,677	110,589	431,189	64,013	69,646	23,367	17,409	21,911	10,314
II	-346,750	159,187	567,751	134,461	93,951	25,142	24,609	29,483	8,711
III	-43,228	149,320	561,571	465,793	102,428	30,708	45,093	28,819	8,775
IV	-277,107	110,490	410,145	89,098	85,171	31,420	33,459	29,108	8,448
2009									
I	-188.824	83.476	283.028	55.668	64.370	29.739	25.925	26.202	

/nastavak /

/ continued /

/ nastavak /		KAPITALNI I FINANSIJSKI RAČUN / CAPITAL AND FINANCIAL ACCOUNT							/ continued /
Kvartali Quarters	B  Ukupno  Total	račun kapitala  Capital account	2 (2.1+2.2+2.3+2.4)					Neto greške i omaške  Net errors and omissions	
			Finansijski račun / Financial account						
			direktne investicije-neto Direct investments - net	portfolio investicije-neto Portfolio investments - net	ostale investicije-neto Other investments - net	promjene neto strane aktive kom. B. Change in Net Foreign Assets	promjena rezervi CBCG Change in CBM reserves		
	(1+2)	1	2.1	2.2	2.3	2.4	2.5	(A+B)	
2006	536,502	-14,028	466,701	-9,944	230,820	-137,047	-5,295	536,502	
I	151,176	-9,648	60,162	60	68,235	32,367	-13,996	151,176	
II	166,356	-3,540	99,771	3,618	101,734	-35,227	27,276	166,356	
III	-14,786	441	83,318	2,888	-42,545	-58,888	14,994	-14,786	
IV	233,755	-1,281	223,449	-16,510	103,397	-75,300	-33,569	233,755	
2007	753,035	-1,435	524,876	4,692	375,702	-150,800	-110,249	753,035	
I	224,387	-642	132,412	9,731	116,513	-33,626	-75,117	224,387	
II	233,953	-734	196,630	-8,314	126,651	-80,280	-1,474	233,953	
III	-164,174	39	47,163	14,800	-140,368	-85,808	114,929	-164,174	
IV	458,870	-97	148,671	-11,524	272,906	48,914	-148,586	458,870	
2008	1,049,288	-463	567,609	-15,538	342,378	155,301	-43,624	1,049,288	
I	381,372	-77	140,874	-7,638	243,507	4,707	-68,980	381,372	
II	317,062	-24	179,220	-3,573	181,813	-40,374	37,408	317,062	
III	-108,985	-209	131,524	1,617	-195,411	-46,505	160,403	-108,985	
IV	459,838	-153	115,991	-5,943	112,469	237,474	-172,455	459,838	
2009									
I	182,939	-3	88,241	-10,471	43,404	61,768	5,884	182,939	

<sup>1)</sup> IZVOR: Centralna banka Crne Gore<sup>1)</sup> SOURCE: Central Bank of Montenegro

## METODOLOŠKA OBJAŠNJENJA

### STANOVNIŠTVO

**Izvori podataka** – Podaci o rođenim, umrlim i zaključenim brakovima prikupljaju se od matičara, a podaci o razvedenim brakovima od sudova nadležnih za razvod braka.

Podaci o unutrašnjim migracijama prikupljaju se od Ministarstva unutrašnjih poslova i javne uprave. Jedinica posmatranja su pojedinačni događaji preseljenja (doseljenja i odseljenja) unutar granica Crne Gore.

**Obuhvatnost i definicije** – Podaci o prirodnom kretanju stanovništva obuhvataju broj rođenih, umrlih i vjenčanih, koji je registrovan u matičnoj službi, dok se broj razvedenih brakova prikupljaju od strane nadležnih sudova.

Jedinica posmatranja su pojedinačni događaji preseljenja (doseljenja i odseljenja) unutar granica Crne Gore.

**Metodološki materijal** – Detaljna objašnjenja o metodologiji primjenjenoj u vitalnoj statistici nalaze se u Uputstvu za matičare o popunjavanju statističkih listića (o rođenju, slučaju smrti i vjenčanju) i u Uputstvu za sudije o popunjavanju statističkih listića o razvedenom braku.

### ZAPOSLENOST I ZARADE

#### Zaposlenost

Podaci o godišnjem prosjeku zaposlenih izračunati su na osnovu dva stanja (31.marta i 30.septembar), a dobijeni su redovnim polugodišnjim izvještajem o zaposlenim i zaradama zaposlenih (RAD – IP) kao i na osnovu podataka koji su regulisani Zakonom o evidencijama u oblasti rada i zapošljavanja ("Sl.list RCG", br.69/03 ), a vode ih Fondovi Penzijsko invalidskog osiguranja i Zdravstva, koje Zavod za statistiku redovno preuzima od istih.

Podaci o mjesečnom broju zaposlenih dobijeni su na osnovu redovnog mjesečnog istraživanja o zaposlenima i zaradama zaposlenih (Rad – 1, koje se vrši na bazi uzorka i prijava – odjava osiguranika koje vode Republički Fond Penzijsko invalidskog osiguranja i Fond Zdravstva.

#### Obuhvatnost

Polugodišnjim izvještajem o zaposlenima i zaradama zaposlenih (RAD – IP) obuhvaćena su preduzeća, ustanove i organizacije svih oblika svojine. Ovim istraživanjem nijesu obuhvaćeni strani državljani zaposleni u našoj zemlji. Ne smatraju se zaposlenima lica koja rade po ugovoru o djelu ili po ugovoru o obavljanju privremenih i povremenih poslova.

Podaci o nezaposlenim licima obuhvataju sva lica koja su kod Zavoda za zapošljavanje registrovana kao nezaposlena.

#### Definicije

Pod pojmom zaposleni podrazumijevaju se sva lica koja imaju zasnovan radni odnos sa preduzećem, ustanovom ili organizacijom ili individualnim poslodavcem bez obzira da li su radni odnos zasnovali na neodređeno ili određeno vrijeme i da li rade puno ili kraće od punog radnog vremena.

## METHODOLOGICAL EXPLANATIONS

### POPULATION

**Data sources** – Data on births, deaths and marriages are collected from Registry Offices and data on divorces from the courts of respective jurisdiction.

Data on internal migrations are collected from the Ministry of Internal Affairs and Public Administration.

**Coverage and definitions** – Data on population changes include the number of births, deaths and marriages, registered by Registry Offices, while the number of divorces is collected by the courts of respective jurisdiction.

Observation units are individual occurrences of migrations (moving in and out) within the borders of Montenegro.

**Methodological material** – Detailed explanation on methodology applied in vital statistics can be found in the Instructions for the filling and submitting of statistical questionnaires (on births, deaths and marriages) as well as in the Instructions for judges for the filing of statistical questionnaires on divorces.

### EMPLOYMENT AND EARNINGS

#### Employment

The data on annual average of employees are calculated on the basis of two reports (31 March and 30 September) and they are obtained from the regular semiannual report on employees and their earnings (RAD-IP), as well as on the basis of data regulated by the Law on Records in Labor and Employment ("Official Gazette of Republic of Montenegro", No. 69/03), and managed by the Fund for Pension and Disability Insurance and Health Fund.

The data on monthly number of employees are obtained by regular monthly survey of employees and their earnings (RAD-1), conducted on the basis of sample, and registration / withdrawal of beneficiaries in Republic Health Fund and Fund for Pension and Disability Insurance.

#### Coverage

The Semiannual Report on employees and their earnings (RAD-1) includes enterprises, institutions and organizations of all types of ownership. This survey does not include foreign citizens employed in our country. The persons that work pursuant to a job contract or a contract on casual engagement are not considered as employed.

Data about unemployed persons include all persons which are registered as unemployed in the Employment Agency.

#### Definitions

The term "employees" refers to all persons being employed in enterprises, institutions, organizations or by self-employed individuals no matter whether their employment status is based on a permanent or temporary contract and whether they work on a full-time or part-time basis.

**Nezaposleni****Definicije**

Podaci o broju nezaposlenih lica preuzeti su od Zavoda za zapošljavanje i obuhvataju samo lica koja su registrovana kod ove službe.

U grupi „lica koja traže zaposlenje“ obuhvaćena su lica shodno članu 4 Zakona o zapošljavanju, stav prvi: „nezaposlenim licem, u smislu ovoga Zakona, smatra se lice od 15-65.godina života koje se nalazi na evidenciji Zavoda za zapošljavanje Crne Gore (u daljem tekstu: Zavod) i aktivno traži započenje, kao i strani državljanin ili lice bez državljanstva, koji ima odobrenje za stalno nastanjenje i odobrenje za zasnivanje radnog odnosa u Crnoj Gori”.

U grupi „lica koja primaju novčanu naknadu“ obuhvaćena su lica koja shodno članu 48 Zakona o zapošljavanju Crne Gore, stav prvi: „pravo na novčanu naknadu ostvaruje osiguranik kojem je u smislu Zakona o radu prestao radni odnos bez njegovog zahtjeva, saglasnosti ili krivice, a koji je bio u radnom odnosu kod jednog ili više poslodavaca sa punim radnim vremenom najmanje 9 mjeseci neprekidno ili 12 mjeseci sa prekidima u posljednjih 18 mjeseci (u daljem tekstu: staž osiguranja), ako se prijavi Zavodu u roku od 30 dana od dana prestanka radnog odnosa“.

U grupi „nezaposlene osobe” koje su se tokom izvještajnog mjeseca prijavile na evidenciju Zavoda za zapošljavanje Crne Gore obuhvataju grupe novoprijavljenih lica”:

- Prvi put, nema zapošljavanja – odnosi se na lica koja su se prvi put prijavila na evidenciju Zavoda, a do tada nijesu bila zapošljavana;
- Prvi put, ima zapošljavanja – lica koja su se prvi put prijavila na evidenciju Zavoda, a do tada nijesu bila zapošljavana;
- Nije prvi put, nema zapošljavanja- lica koja su se više puta prijavljivala na evidenciju Zavoda, a nisu bila zapošljavana;
- Nije prvi put, ima zapošljavanja – lica koja su se više puta prijavljivala na evidenciju Zavoda, a bila su zapošljavana;

U grupi „prestanak vođenja evidencije“ obuhvaćena su lica koja shodno članu 86 Zakona o zapošljavanju, stav prvi: „evidencija o nezaposlenom licu prestaje da se vodi ako:

1. zaključi ugovor o radu sa punim radnim vremenom;
2. se odjavi iz evidencije nezaposlenih lica;
3. odbije uključivanje ili ne izvršava obaveze utvrđene ugovorom o uključivanju u program aktivne politike zapošljavanja;
4. postane vlasnik ili većinski suvlasnik preduzeća;
5. postane preduzetnik;

**Unemployed****Definitions**

Data about unemployed persons are taken from the Employment Agency and include only persons registered at the Agency.

The group “persons looking for employment” includes persons defined according to the article 4, par. 1 of the Law on Employment as: “an unemployed person, according to this Law, is a person aged 15-65 which is in the records of the Employment Agency of Montenegro (furthermore: EAM) and is actively looking for employment, as well as a foreigner or a person without citizenship, who has the permission for permanent residence as well as the permission for starting work in Montenegro”.

The group “persons receiving social benefits” includes persons who, according to the article 4, par. 1 of the Law on Employment: “receive the monetary benefit for stopped working without person’s request, compliance or guilt, and who was working for one ore more employers the full working time for at least 9 months without a break or 12 months with breaks in the last 18 months (furthermore: duration of insurance), if he/she reports to the EAM within 30 days of stopping to work.

The group “unemployed persons” who reported themselves to the records of the Employment Agency of Montenegro within the reporting month includes the groups of newly reported persons:

- First time, no employment– refers to persons who are reported for the first time in the records of EAM, and were not previously employed;
- First time, with employment – persons who are reported for the first time in the records of the EAM, and used to be employed;
- Not-first time, no employment – persons who reported to the records of EAM several times, and were not employed;
- Not-first time, no employment persons who reported to the records of EAM several times, and used to be employed;

The group “stopped keeping records” includes persons who, according to the article 86, refer to the par. 1 of the Law on Employment: “records on the unemployed person is stopped to be kept if:

- 1 the person signs contract on work with full working time;
- 2 is signed off from the records of the unemployed persons;
- 3 refuses inclusion or does not perform obligations specified in the agreement on the inclusion in the programme of active employment policy;
- 4 becomes the owner or major co-owner of an enterprise;
- 5 becomes an entrepreneur;



6. odbije odgovarajuće zaposlenje;
7. nije dalo tačne podatke o ispunjavanju uslova za sticanje statusa nezaposlenog lica;
8. navrš 65 godina života;
9. ostvari pravo na starosnu ili invalidsku penziju;
10. ostane potpuno nesposoban za rad;
11. ode na izdržavanje kazne zatvora u trajanju dužem od šest mjeseci;
12. aktivno ne traži zaposlenje;
13. je radno angažovano suprotno propisima o radnim odnosima („rad na crno“);
14. postane osiguranik – zemljoradnik, u skladu sa Zakonom o penzijskom i invalidskom osiguranju“.

## ZARADE

### Izvori podataka

Podaci o prosječnim zaradama prikazuju zarade isplaćene u mjesecu i dobijeni su iz redovnog mjesečnog istraživanja Mjesečni izvještaj o zaposlenim i zaradama (obrazac RAD-1).

### Obuhvatnost

Istraživanjem su obuhvaćena preduzeća, ustanove, zadruge ili organizacije, svih oblika svojine kao i njihove jedinice u sastavu, po organizaciono teritorijalnom principu, počev od nivoa opštine.

### Definicije

Zaradu u smislu člana 78. Zakona o radu čini: zarada koju je zaposleni ostvario za obavljeni rad i vrijeme provedeno na radu, uvećana zarada, naknada zarade i druga primanja utvrđena kolektivnim ugovorom i ugovorom o radu čini bruto zaradu u smislu ovog zakona.

Zarada se uvećava u skladu sa kolektivnim ugovorom i ugovorom o radu za: rad duži od punog radnog vremena; noćni rad; rad u dane državnih i vjerskih praznika koji su zakonom utvrđeni kao neradni dani; minuli rad i u drugim slučajevima utvrđenim kolektivnim ugovorom i ugovorom o djelu.

**Prosječna zarada izračunava se tako što se ukupno isplaćena masa zarada u mjesecu dijeli sa brojem zaposlenih na koje se odnose izvršene isplate.**

Zaradu bez poreza i doprinosa čini zarada umanjena za poreze i doprinose na teret zaposlenog.

Indeks realne prosječne zarade bez poreza i doprinosa predstavlja odnos između indeksa nominalne prosječne zarade bez poreza i doprinosa i indeksa potrošačkih cijena.

6. *refuses appropriate employment;*
7. *did not give correct data on meeting conditions for getting the unemployment status*
8. *is 65 years old;*
9. *gets right to the old-age and survivor pensions;*
10. *is completely incapable to work;*
11. *is serving the imprisonment punishment longer than 6 months;*
12. *is not actively looking for employment;*
13. *is working contrary to the regulations on labour ("unregistered work");*
14. *becomes insured by agriculture, in compliance with the Law on pension and disability insurance.*

## WAGES

### Data sources

*The data on average wages present wages paid out in a month, and are obtained from regular monthly survey Monthly report on employees and their earnings (questionnaire RAD-1).*

### Coverage

*The survey covers enterprises, institutions, cooperatives or organizations as well as their composite units of all kinds of ownership, by organizational and territorial principle, starting from the level of municipality.*

### Definitions

*Wage, within the meaning of Article 78th Law on Labour, consists of earnings by the employee made for work performed and time spent at work, increased earnings, compensation earnings and other income is determined collective agreement and the agreement on the work constitutes gross earnings within the meaning of this Act.*

*Earnings increases in accordance with the collective agreement and the agreement on the work for: work longer than full working hours, night work, work in the days of national and religious holidays that are fixed by law as non-working days, past performance in other cases established by collective agreement and the agreement on work.*

*Calculation of the average earnings is done so that the total sum of all monthly earnings is divided by the number of employees to whom the paid earnings refer.*

*Net salaries and wages are tax and contributions deducted (gross) salaries and wages.*

*Index real average wage without taxes and contributions is the relationship between indices of nominal average wage without taxes and contributions, and the index of consumer prices.*

**CIJENE****CIJENE PROIZVODJAČA INDUSTRIJSKIH PROIZVODA**

Pod prodajnom cijenom proizvođača industrijskih proizvoda podrazumijeva se cijena po kojoj proizvođači prodaju svoje proizvode u najvećim količinama nadomaćem tržištu. U cijenu ulazi regres koji ostvaruje prodavac a odbija se rabat, popust, kasa skonto i sl, ako ih prodavac odobrava kupcima. U cijenu ne ulazi porez na dodatu vrijednost.

Ove cijene prikupljaju se mjesečnim izvještajima koje neposredno dostavljaju izabrana preduzeća za oko 250 industrijskih proizvoda. Izbor industrijskih preduzeća izvršen je prema njihovom učešću u ukupnoj realizaciji određene oblasti.

Prosječne mjesečne cijene računaju se ponderisanjem tekućih mjesečnih cijena odgovarajućih proizvoda, a godišnje prosječne cijene proizvođača industrijskih proizvoda predstavljaju neponderisani prosjek mjesečnih cijena.

Indeksi cijena izračunavaju se ponderima na bazi podataka o realizaciji industrijske proizvodnje. Svake godine vrši se korekcija pondera, a novi ponderi izračunavaju se svake pete godine.

Indeksi cijena proizvođača industrijskih proizvoda preračunavaju se početkom svake godine na prethodnu godinu kao baznu.

**POTROŠAČKE CIJENE**

Potrošačke cijene su cijene po kojima trgovina na malo, individualni proizvođači i vršioci usluga prodaju svoje proizvode i usluge krajnjim potrošačima, uključujući sve poreze i takse koje se plaćaju u prometu na malo.

Potrošačke cijene prate se u četiri grada Crne Gore: Podgorici, Nikšiću, Kotoru i Pljevljima, koji predstavljaju veće tržišne centre. Cijene industrijsko-neprehrambenih proizvoda snimaju se jedanput mjesečno u periodu od 3. - 10.-og, industrijsko - prehrambenih proizvoda od 11. - 14.-og, usluga od 14-16.-og, a cijene poljoprivrednih proizvoda od 15 - 21.-og u mjesecu.

Prosječne mjesečne cijene za grad kod svih proizvoda i usluga, računaju se neponderisanom geometrijskom sredinom, dok se prosječne mjesečne cijene za Crnu Goru računaju na bazi prosječnih cijena iz četiri grada koje se ponderišu strukturom potrošnje domaćinstava.

**PRICES****PRODUCER PRICES OF INDUSTRIAL PRODUCTS**

*Producer prices of industrial products is the price according to which the producers sell their products in the most numerous quantities on the domestic market. The price also includes the regress achieved by the producer, and deduces the rebate, discounts, cash sconto, etc., if the producer approves them to the buyer.*

*The price does not include value added tax..*

*These prices are collected through the monthly surveys submitted directly by the chosen enterprises for about 250 industrial products. The list of industrial enterprises is done on the basis of their participation in the total realization of certain area.*

*Average monthly prices are calculated by weighting the current monthly prices of corresponding products, and annual average producer prices of industrial products*

*present the un-weighted average of the monthly prices.*

*Price indexes are calculated with weights based on the data on the total realization of industrial production. The correction of weights is done every year, and the new weights are calculated every five years.*

*Indices of producer prices of industrial products are recalculated in the beginning of each year using the previous year as the base year.*

**CONSUMER PRICES**

*Consumer prices are the prices at which the retail shop, custom manufacturers and service providers sale their products and services to consumers, including all taxes and fees that are paid in the small.*

*Consumer prices are monitored in the four cities of Montenegro: Podgorica, Niksic, Pljevlja and Kotor, which represent major market centers. Prices non-industrial products are recorded once a month for a period of 3 - 10 th, industrial - food products from 11 - 14 th, provider of 14-16.-og, and the prices of agricultural products 15-21-th of the month.*

*Average monthly prices for the city for all products and services are calculated by non-weight geometric mean, while the average monthly prices for Montenegro calculated based on average price in the four cities that weighted by structure of household consumption.*

Prosječne godišnje potrošačke cijene predstavljaju neponderisani prosjek cijena za dvanaest mjeseci.

Početkom svake godine vrši se korektura pondera na bazi rasta potrošačkih cijena. Indeksi potrošačkih cijena preračunavaju se početkom svake godine na prethodnu godinu kao baznu.

## ŠUMARSTVO

### Izvori podataka i obuhvatnost

Podaci se prikupljaju mjesečnim izvještajem ŠUM-22. Ovim izvještajem obuhvaćena su šumarska i druga preduzeća koja u državnim šumama vrše proizvodnju šumskih sortimenata, bez obzira da li im je proizvodnja šumskih sortimenata osnovna djelatnost ili nije.

### Definicije

Indeks fizičkog obima iskorišćavanja šuma obračunava se na osnovu podataka o proizvodnji šumskih sortimenata, prema nomenklaturi proizvoda i ponderacionih koeficijenata. Količine predstavljaju neto drvenu masu sortimenata izraženu u kubnim metrima. Za izračunavanje indeksa proizvodnje šumskih sortimenata kao koeficijenti ponderacije koriste se prosječne prodajne cijene proizvoda.

## INDUSTRIJA

### Izvori podataka

Prikazani podaci prikupljaju se mjesečnim izvještajima industrije na obrascu IND-1.

### Obuhvatnost

Mjesečnim izvještajem industrije obuhvataju se sva preduzeća kao i njihovi djelovi koji obavljaju industrijsku djelatnost, odnosno koji su prema Klasifikaciji djelatnosti razvrstani u sektore: Vadjenje rude i kamena, Prerađivačka industrija i Proizvodnja i snabdijevanje električnom energijom, gasom i vodom. Preduzeća neindustrijskih djelatnosti su izvještajne jedinice ako u svom sastavu imaju jedinicu koja se bavi industrijskom djelatnošću.

### Nomenklatura

Proizvodnja se iskazuje prema Nomenklaturi industrijskih proizvoda, koju čine industrijski proizvodi i usluge razvrstane po djelatnostima u kojima su proizvedeni.

### Indeksi

Indeks fizičkog obima industrijske proizvodnje formiran je na osnovu podataka o količinama proizvoda i ponderacionog sistema. Podaci o količinama daju se prema Nomenklaturi proizvoda i sirovina.

Za obračun indeksa fizičkog obima industrijske proizvodnje ponderi izražavaju prosječnu dodatu vrijednost po jedinici proizvoda.

*Average annual consumer prices represent the average non-weight average prices for twelve months.*

*Beginning of each year is done proofreading weights on the basis of consumer price growth. Consumer price converted at the beginning of each year to the previous year as a base.*

## FORESTRY

### Data sources and coverage

*The data are collected on the basis of the monthly survey ŠUM-22. This report covers forestry and other enterprises dealing with production of forest assortments in state forests, disregarding if forest assortments production is their basic activity or not.*

### Definitions

*The physical volume index of forests exploitation is calculated on the basis of data on the production of forest assortments, according to the present nomenclature of products and weights coefficients. Quantities represent net wood mass of assortments expressed in cubic meters. In order to calculate the index of forest assortments production, average purchase prices are used as weighting coefficients.*

## INDUSTRY

### Sources of data

*The shown data are collected by monthly surveys (through the questionnaire IND-1).*

### Coverage

*Monthly industry survey includes all enterprises, as well as their parts, performing the industrial activity, i.e. those that are according to the Classification of Activities classified into the following sectors: Mining and quarrying, Manufacturing, Electricity, gas, and water supply. Enterprises of non-industrial activities represent reporting units if they have in their structure a unit dealing with industrial production.*

### Nomenclature

*The production is presented according to the Nomenclature of industrial products, including industrial products and services structured according to the activities in which they were produced.*

### Indices

*Index of physical scope of industrial production is formed on the basis of data on product quantities and weighting system.*

*The data are provided according to the Nomenclature of products and raw materials. In the calculation of the index of physical scope of industrial production, the weights express the average value added per product unit.*

**GRAĐEVINARSTVO****Izvor podataka i obuhvat**

Prikazani podaci prikupljaju se tromjesečnim izvještajem građevinarstva GRAĐ-31, kojim su obuhvaćena preduzeća iz oblasti građevinarstva, kao i jedinice koje obavljaju građevinsku djelatnost a nalaze se u sastavu negrađevinskih preduzeća. Podaci se prikupljaju od preduzeća iz Crne Gore kao i poslovnih jedinica stranih preduzeća koja obavljaju građevinsku djelatnost u Crnoj Gori.

**Definicije**

Vrijednost izvršenih građevinskih radova izražena je u tekućim cijenama i obuhvata sav ugrađeni građevinski materijal i utrošeni rad. Podaci o vrijednosti izvršenih građevinskih radova daju se na osnovu privremenih situacija koje ispostavljaju izvođači radova. U vrijednost nijesu uključeni troškovi nabavke zemljišta, projektovanja, nadzora i PDV-a. Podaci o vrijednosti izvedenih radova odnose se na radove izvedene u izvještajnom periodu na završenim i nezavršenim građevinama.

Broj radnika – Obuhvata sve radnike koji na gradilištima obavljaju građevinske, instalaterske i završne radove, bez obzira na kvalifikaciju, vrstu radnog odnosa (ugovor o radu, ugovor o djelu, iznajmljeni radnici itd.) i dužinu rada na gradilištima. Nijesu uključeni zaposleni koji rade na inženjersko-tehničkim, administrativnim i rukovodećim poslovima.

Izvršeni efektivni časovi rada - Obuhvataju stvarno odrađene časove radnika angažovanih na gradilištima u redovnom radnom vremenu kao i u prekovremenim satima.

Nove narudžbe – Predstavljaju ukupnu vrijednost ugovorenih radova između proizvođača i treće strane na osnovu zaključenog ugovora.

**SPOLJNA TRGOVINA****Izvori i metodi prikupljanja podataka**

Izvor podataka za statistiku spoljne trgovine je Jedinstvena Carinska Isprava o izvozu i uvozu robe, koju prilikom carinjenja robe, u ime preduzeća, podnose carinarcima špediterska preduzeća koja imaju dispoziciju carinskog obveznika.

**Obuhvatnost**

Pri izvozu obuhvata se sva roba koja potiče iz domaće odnosno proizvodnje iz unutrašnjeg robnog prometa uključujući i tzv. nacionalizovanu robu (roba koja je bila uvezena i ocarinjena, pa se u nepromijenjenom ili doradenom stanju izvozi kao roba porijekla iz Crne Gore na strano tržište). Uvoz obuhvata svu robu uvezenu iz inostranstva koja je ocarinjena i puštena u unutrašnji promet u cilju reprodukcije, investicija ili široke potrošnje.

**CONSTRUCTION****Source of data and coverage**

*Presented data are collected through a quarterly survey in construction GRAĐ-31, which include enterprises in construction, as well as units performing the activity in construction and are within non-construction enterprises. Data are collected from enterprises from Montenegro as well as the business units of foreign enterprises performing construction activity in Montenegro.*

**Definitions**

*Value of finalized construction works is given at current prices and includes all built material and performed work. Data about the value of finalized construction works is given on the basis of temporary situations given by contractors. The value does not include costs of buying the land, engineering, monitoring and VAT. The data on value of finalized work refer to works performed in the reporting period on finished and non-finished construction sites.*

*Number of workers – Includes all workers who at the construction site perform the construction, installation and final works, no matter to qualification, the type of working contract (contract on work, contract on task, rented workers, etc.) and the duration of work at the construction site. It does not include employees working on engineering-technical, administrative and managerial positions.*

*Effective working hours – include really performed working hours of workers engaged in the regular working hours, as well as overtime work.*

*New orders – present the total value of contracted works between producer and third party based on the concluded report.*

**EXTERNAL TRADE****Sources and methods of data collection**

*Data source for external trade statistics is Single Administrative Document on import and export of goods, submitted, on behalf of enterprises, by shipping agents having the disposition of Custom tributary.*

**Coverage**

*Export covers all goods of domestic i.e. internal production origin, including so-called nationalized merchandise, (imported goods cleared through the customs, and unchanged exported as goods of Montenegro origin). Import covers all merchandise imported, cleared through the customs, and put on domestic market for reproduction, investment or consumption purposes.*

Uključene su i isporuke raznih dobrotvornih organizacija i privatne poklon pošiljke.

Od januara 2008. god. MONSTAT je u skladu, sa preporukama UN-a i EUROSTAT-a primijenio opšti i specijalni trgovinski sistem.

MONSTAT je do sada koristio ublaženu definiciju specijalnog sistema trgovine. Svjesni ograničenja ublažene definicije specijalnog sistema trgovine, u rezultate spoljnotrgovinske razmjene uključen je i ponovni izvoz robe iz carinskih skladišta i slobodnih carinskih zona koji se registruje po opštem sistemu trgovine.

**Opšti sistem trgovine** koristi se u slučajevima kada se statistička teritorija zemlje poklapa s njenom ekonomskom teritorijom. Prema tome, opšti sistem trgovine predstavlja širi koncept i kod uvoza obuhvata svu robu koja ulazi na ekonomsku teritoriju zemlje koja prikuplja podatke, sa izuzetkom robe koja je u tranzitu, a kad izvoza obuhvata svu robu koja napušta ekonomsku teritoriju zemlje koja prikuplja podatke, sa izuzetkom robe koja je u tranzitu.

**Sistem specijalne trgovine** predstavlja užu koncept i koristi se u slučajevima kada se statistička teritorija zemlje poklapa samo sa određenim dijelom njene ekonomske teritorije. Stroga definicija specijalnog sistema trgovine koristi se kada statistička teritorija obuhvata samo slobodno cirkulirajuće područje u okviru koga roba može biti raspoloživa bez carinskih ograničenja, to znači da je ona prošla carinski postupak i da se koristi za domaću upotrebu u cilju reprodukcije, široke potrošnje i investicije.

Izvoz obuhvata svu robu koja napušta slobodno cirkulirajuće područje zemlje koja prikuplja podatke.

## Definicije

*Vrijednost robe* u spoljnoj trgovini iskazana je na osnovu cijena koje su postigla preduzeća prilikom sklapanja ugovora. Sve vrijednosti obračunate su na bazi pariteta franko granice Crne Gore: FOB-cijene za izvoz, CIF-cijene za uvoz.

Statistička vrijednost robe koja se izvozi jeste fakturna vrijednost robe. Statistička vrijednost robe koja se uvozi jeste vrijednost koja predstavlja carinsku osnovicu. Podaci o vrijednosti su obračunati po tekućim kursovima koji se primjenjuju za utvrđivanje carinske osnovice. Po tekućim kursovima koji se primjenjuju za utvrđivanje carinske osnovice takođe je izvršen obračun troškova transporta, osiguranja, pretovara i sl. koji se plaćaju u stranoj valuti.

Registracija podataka spoljne trgovine po zemljama vrši se po principu zemlje namjene kod izvoza i zemlje porijekla kod uvoza. To znači da se pri izvozu registruje zemlja u kojoj se roba troši i dalje prerađuje, a pri uvozu ona zemlja u kojoj je roba proizvodnjom dovedena u stanje u kome se uvozi

*Deliveries of various charity organizations and private gifts are also included.*

*Due to the recommendations of UN and EUROSTAT, MONSTAT has since January 2008 applied the general and special trade systems.*

*So far MONSTAT was using the reduced definition of the special trade system. Being aware of the limitations of the reduced definition of special trade system, the results of external trade include the re-export of goods from customs warehouses and free customs zones which is registered according to general trade system.*

**General trade system** is used in cases when the statistical territory matches with its economic territory. Accordingly, the general trade system presents the wider concept and in import it includes all goods coming in the economic territory of the country which collects data, with the exception of goods in transit, and in export it includes all goods leaving the economic territory of the country which collects data, with the exception of goods in transit.

**Special trade system** presents the narrow concept and is used in cases when the statistical territory of the country matches only with the certain part of its economic territory. The strict definition of the special trade system is used when the statistical territory includes only the free circulating area in which the goods can be available without the customs limitations, which means that it went through the customs procedure and that it is used for domestic use for the purpose of reproduction, wider consumption and investments.

*The export includes all goods which leaves the free circulating area of the country which collects the data.*

## Definitions

*Value of goods in external trade statistics is shown on the basis of prices fixed by organizations and enterprises by contractual stipulation. All values have been calculated on the basis of parity free on Montenegrin border, i.e. F.O.B. export prices and C.I.F. import prices.*

*Statistical value of goods being exported is the invoice value of goods. Statistical value of goods being imported is the value representing customs base. Data on values are calculated on the basis of exchange rates applied for establishing customs base. Costs of transport, insurance and reloading, etc. paid in foreign currency are calculated at current exchange rates applied for establishing customs base.*

*Registration of external trade data by country is carried out according to principle of destination country for the export and origin country for the import. It means that, in case of export, the country in which goods are consumed or further processed is registered, and in case of import – the country where the goods have been produced in the condition in which they have been imported.*

**UNUTRAŠNJA TRGOVINA****Izvori podataka**

Podaci o unutrašnjoj trgovini preduzeća koja se bave trgovinom na malo, prikupljaju se redovnim mjesečnim istraživanjem. Istraživanje je na bazi uzorka i obuhvaćena su preduzeća koja su u Registru jedinica razvrstavanja prema klasifikaciji djelatnosti razvrstana u sektor trgovine.

Podaci o prodaji i otkupu proizvoda poljoprivrede, šumarstva i ribarstva prikupljaju se mjesečnim izvještajima o realizaciji poljoprivrednih proizvoda sopstvene proizvodnje poljoprivrednih preduzeća i zemljoradničkih zadruga i mjesečnim izvještajem o otkupu poljoprivrednih proizvoda od individualnih gazdinstava.

**Obuhvatnost**

Statistika unutrašnje trgovine obuhvata i prikazuje promet preduzeća čija je osnovna djelatnost trgovina na malo.

Mjesečnim izvještajima o prodaji i otkupu proizvoda poljoprivrede, šumarstva i ribarstva obuhvaćena su poljoprivredna preduzeća, zemljoradničke zadruge kao i druga preduzeća koja su ovlašćena da vrše otkup proizvoda od individualnih gazdinstava u cilju dalje prerade ili prodaje.

**Definicije**

Promet robe u trgovini na malo predstavlja vrijednost prodate robe preduzeća na malo koja je prodana krajnjim potrošačima, odnosno stanovništvu za ličnu potrošnju i upotrebu u domaćinstvu, kao i pravnim i fizičkim licima za obavljanje djelatnosti.

Podaci o prodaji i otkupu proizvoda poljoprivrede, šumarstva i ribarstva obuhvataju vrijednost prodaje proizvoda iz sopstvene proizvodnje preduzeća i zadruga kao i otkup vrijednosti proizvoda od individualnih gazdinstava, koje vrše zato ovlašćene organizacije u cilju dalje prerade ili prodaje.

**UGOSTITELJSTVO****Izvori podataka i obuhvatnost**

Podaci o ostvarenom prometu u ugostiteljstvu po mjesecima, se procjenjuje na osnovu ocjene trenda prometa, dok se ne dobiju rezultati redovnog tromjesečnog istraživanja, ugostiteljstva. Mjesečne procjene se koriguju na osnovu dobijenih rezultata.

Podaci o prometu u ugostiteljstvu prikupljaju se tromjesečnom izvještajnom službom za ugostiteljska preduzeća, po grupama usluga. Godišnjom izvještajnom službom prate se ugostiteljska preduzeća i preduzetnici. Mjesečni podaci ne obuhvataju promet preduzetnika.

**INTERNAL TRADE****Sources of data**

*Data of internal trade of enterprises dealing with retail trade are collected through regular monthly survey. The survey is sample based and includes all enterprises which are in the Administrative register classified in the sector Trade.*

*Data about sales and buy out of products in agriculture, forestry and fishery are collected through monthly reports on realization of agricultural products of own production of agricultural enterprises and cooperatives and through monthly report on buying out of agricultural products from individual holdings.*

**Coverage**

*Statistics of internal trade covers and presents the turnover of enterprises whose primary activity is retail trade.*

*Monthly survey on sales and buying out of products in agriculture, forestry and fishing covers agricultural enterprises, agricultural cooperatives, as well as other enterprises authorized to do the buying out of products from individual holdings for future processing or sale.*

**Definitions**

*Turnover of goods in retail trade is the retail value of goods of an enterprise sold to final users, i.e., the population for personal consumption and use in household, as well as to private and physical persons for performing the activity.*

*Data on sales and buying out of products in agriculture, forestry and fishing cover the value of sale of products from own production of enterprises and cooperatives as well as the buying out of value of products from individual holdings, performed by authorized agencies for further processing or sale.*

**CATERING****Sources of data and coverage**

*Data on realized turnover in catering by month are estimated on the basis of estimate of trend of turnover, until the results of the regular quarterly survey in catering are received. Monthly estimates are corrected on the basis of received results.*

*Data on turnover in catering are collected through quarterly survey survey for enterprises in catering, by groups of services. The annual survey collects data on enterprises in catering and entrepreneurs. Monthly data do not include turnover of entrepreneurs.*

**Definicije**

Prikazani promet u ugostiteljstvu predstavlja vrijednost izvršenih ugostiteljskih usluga koje obuhvataju usluge smještaja, ishrane, točenja pića, kao i druge usluge koje se uobičajeno obavljaju u ugostiteljstvu.

**TURIZAM****Izvori podataka i obuhvatnost**

Podaci o broju dolazaka turista i noćenja prikupljeni su redovnim mjesečnim izvještajem (obrazac TU-11). Izvještaji se sastavljaju na osnovi evidencija u knjigama gostiju. Istraživanje se sprovodi na bazi potpunog obuhvata.

**Definicije**

**Izvještajne jedinice** jesu svi poslovni subjekti (preduzeća/trgovačka društva, zadruge, ustanove, itd.) i njihovi dijelovi koji obavljaju djelatnost pružanja usluga smještaja turistima; zdravstvene ustanove za svoje objekte u kojima osobe borave radi medicinske rehabilitacije (osobe same snose naknadu za taj boravak); poslovni subjekti i njihovi dijelovi koji se bave posredovanjem u pružanju smještajnih usluga (putničke agencije); poslovni subjekti koji se bave posredovanjem u smještaju gostiju u seoskim kućanstvima; turističke zajednice i druga nadležna tijela za privatne sobe, apartmane ili kuće koje neposredno iznajmljuju turistima; poslovni subjekti i njihovi dijelovi za svoja odmarališta; poslovni subjekti koji su osnovali ili vode brigu i nadzor nad planinarskim domovima; vojne ustanove za svoje ugostiteljske objekte za smještaj gostiju; poslovni subjekti koji se za vrijeme školskih praznika koriste školama, domovima i sličnim objektima kao privremenim smještajnim kapacitetima; Istraživanjem su obuhvaćene sve pravne osobe i njihovi dijelovi te fizičke osobe koje iznajmljuju smještajne objekte turistima (komercijalni objekti).

**Turist** je svaka osoba koja u mjestu van svog prebivališta provede najmanje jednu noć u ugostiteljskom ili drugom objektu za smještaj turista radi odmora ili rekreacije, zdravlja, studija, sporta, religije, porodice, poslova, javnih misija ili skupova.

U turiste se ne uključuju migranti, pogranični radnici, diplomati, članovi vojnih snaga na redovnim zadacima, izbjeglice, itd.

**Prebivalište** je mjesto u kojem se osoba nastanila s namjerom da u njemu stalno živi. Turist je registrovan u svakom mjestu ili objektu u kojem boravi i zbog toga, u slučaju promjene mjesta ili objekta, dolazi do njegova ponovnog iskazivanja, a time i do dvostrukosti u podacima. Prema tome, statistika evidentira broj dolazaka turista, a ne broj turista.

**Definitions**

*Presented turnover in catering presents the value of performed catering services including the services of accommodation, food, pouring beverages, as well as other services usually performed in catering.*

**TOURISM****Sources of data and coverage**

*Data about arrivals of tourists and overnight stays are collected through regular monthly survey (form TU-11). The reports are compiled on the basis of records in the guest books. The survey is conducted on the basis of full coverage.*

**Definitions**

**Reporting units** are all business subjects (enterprises/trade companies, cooperatives, institutions, etc.) and their parts performing activity of providing accommodation services to tourists; health institutions for their objects attended by persons for medical rehabilitation (persons pay by themselves for the stay); business subjects and their parts dealing with intermediation in providing accommodation services (travel agencies); business subjects dealing with intermediation in accommodation of guests in village houses; tourist unions and other competent bodies for private rooms, apartments or houses directly rented by tourists; business subjects and their parts for their resorts; business subjects which founded or take care and monitor the mountain lodgings; military institutions for their catering objects for accommodation of guests; business subjects which are during school holidays used by schools, hostels and similar objects as temporary placing capacities. The survey covers all legal persons and their parts as well as persons renting accommodation to tourists (commercial objects).

**Tourist** is a person who spends at least one night in an accommodation facility or some other object for accommodation of tourists, in a place other than his/her place of permanent residence for the reason of vacation or recreation, health, studies, sports, religion, family, business, public missions or meetings. Tourists do not include migrants, border workers, diplomats, members of military force in the regular duty, refugees, etc.

**Residence** is the place where the person is settled intending to permanently live in it. Tourist is registered in a place or object where it resides and due to it, in the case of change of place or object, the double reporting may appear, which may lead to the double data. There the statistic records the arrivals of tourists, and not the number of tourists.

**SAOBRAĆAJ, SKLADIŠTENJE I VEZE**

Podaci o prevozu putnika i robe u unutrašnjem, pomorskom, vazdušnom i drumskom saobraćaju odnose se na prevoz koji obavljaju saobraćajna preduzeća registrovana u saobraćajnoj djelatnosti, bez obzira da li prevoz obavljaju unutar ili van granica naše zemlje za račun domaćeg ili inostranog korisnika.

Podaci se prikupljaju redovnim mjesečnim i godišnjim statističkim izvještajima saobraćajnih preduzeća.

**Željeznički saobraćaj**

Prevezeni putnici u unutrašnjem saobraćaju obuhvataju otputovala putnike, otputovala putnike u inostranstvo, prispjele iz inostranstva i putnike u tranzitu. Prevezeni teret obuhvata utovarenu robu u unutrašnjem i u međunarodnom saobraćaju: uvoz, izvoz i tranzit.

**Promet na aerodromima**

Podaci o prometu putnika i robe na aerodromima dobijeni su na osnovu redovnih mjesečnih i godišnjih izvještaja preduzeća za aerodromske usluge i obuhvataju kompletan promet, odnosno i domaće i strane avione.

**Drumski saobraćaj**

Podaci o prevozu odnose se na rad domaćih preduzeća drumskog saobraćaja u unutrašnjem i međunarodnom prevozu putnika i tereta.

**Gradski saobraćaj**

Obuhvaćen je prevoz putnika koji obavljaju saobraćajne organizacije u gradskom i prigradskom saobraćaju

**Poštanski saobraćaj**

Poštanski saobraćaj obuhvata: Poštanske usluge, telegrafске i telefonske usluge. Poštanske aktivnosti obuhvataju sljedeće usluge: prenos pismonosnih i paketnih pošiljki i usluge platnog prometa.

Pismonosne pošiljke odnose se na otpremljena pisma, dopisnice, novine i časopise, preporuke i vrijednosna pisma u unutrašnjem prometu, a u međunarodnom prometu i u prispjebu. Tranzit nije obuhvaćen.

Platni promet obuhvata uplate poštanskim uputnicama, po žiro i tekućim računima i računskim knjižicama, isplate međunarodnim poštanskim uputnicama i žiro i tekućim računima i računskim i invalidskim knjižicama.

Telegrafске usluge obuhvataju otpremu telegrama u unutrašnjem prometu i prometu sa inostranstvom, uključujući i tranzit.

Telefonske usluge obuhvataju fiksnu i mobilnu mrežu i prikazuju se u onim jedinicama koje se i koriste u tehničkom smislu-minutima.

**TRANSPORT, STORAGE AND COMMUNICATIONS**

*Data on the transport of passengers and goods in the internal, marine, air and road transport refer to the transport performed by transport enterprises registered in transport activities, no matter whether the transport is done inside or outside the borders of our country on the account of domestic or foreign user.*

*Data are collected through regular monthly or annual statistical surveys from reports of transport enterprises.*

**Railway transport**

*Passengers transported in domestic transport include departed passengers, passengers departed abroad, passengers who arrived from abroad and passengers in transit. Transported cargo includes loaded goods in domestic and international transport: import, export and transit.*

**Traffic in airports**

*Data about traffic of passengers and goods in airports are received on the basis of regular monthly and annual reports of enterprises for airport services and they cover complete traffic, i.e., both domestic and foreign airplanes.*

**Road transport**

*Data about transport refer to the work of domestic enterprises of road transport in internal and international transport of passengers and cargo.*

**Local transport**

*It includes the transport of passengers performed by transport organizations in local and commuter services.*

**Postal communications**

*Postal communications include: Postal services, telegraphic and telephone services. Postal activities include the following services: transport of letter mail and services of balance of payments.*

*Letter mail refer to only to mail sent, postal cards, newspaper and magazines, registered and value letters in domestic transport, as well as for the receiving in the international communications. The transit is not included.*

*Balance of payment includes payments made by postal money orders, by giro and current accounts and account booklets, payments by international postal money orders and giro and current accounts and account and disability booklets.*

*Telegraph services refer to sending of telegrams in the country as well as to foreign countries, including the transit.*

*Telephone services include fixed and mobile networks and are presented in the units used in the technical sense -minutes.*



**MONETARNI AGREGATI****Izvori podataka**

Za izradu monetarne statistike su: bilanci Centralne banke Crne Gore i bilanci banaka. Banke dostavljaju podatke u skladu sa Odlukom o izvještajima koje banke dostavljaju Centralnoj banci Crne Gore.

Za prikupljanje i obradu podataka monetarne statistike nadležna ja Centralna banka Crne Gore.

**Definicije**

**Monetarnu bazu (M0)** čine depoziti banaka kod CBCG (obračunski račun banaka i izdvojena obavezna rezerva - do januara 2008. bez dijela koji banke drže u državnim zapisima) i procijenjeni iznos gotovog novca u optičaju.

**Monetarni agregat (M1)** čine M0, depoziti po viđenju nebankarskog sektora kod banaka i CBCG, u eurima i drugim valutama, isključujući depozite centralne Vlade.

**Monetarni agregat (M11)** čini M11 uvećan za depozite centralne Vlade po viđenju, u eurima i drugim valutama.

**Monetarni agregat (M2)** čine M1 i oročeni depoziti nebankarskog sektora kod banaka i CBCG, u eurima i drugim valutama, isključujući depozite centralne Vlade.

**Monetarni agregat (M21)** čini M11 uvećan za oročene depozite (uključujući depozite centralne Vlade), u eurima i drugim valutama.

**Depoziti stanovništva** – u tabeli je prikazano stanje ukupnih depozita fizičkih lica kod banaka na kraju perioda i njihova struktura po ročnosti.

**PLATNI BILANS CRNE GORE**

Bilans plaćanja sastavlja se u skladu sa metodologijom koju je preporučio Međunarodni monetarni fond (Balance of payments Manual, fifth edition, 1993). Izvori podataka su: Republička uprava carina Crne Gore, MONSTAT, Elektroprivreda Crne Gore, Ministarstvo finansija, poslovne banke i CBCG. Bilans plaćanja se iskazuje u eurima. Preračunavanje vrijednosti transakcija iz originalnih valuta u izvještajnu valutu obavlja se: primjenom srednjih kurseva CBCG na dan transakcije, primjenom mjesečnih i godišnjih srednjih prosječnih kurseva CBCG, primjenom srednjeg dnevnog kursa na kraju perioda kod procjene transakcija čija se razlika stanja prati.

Početkom 2005. godine izvršena je revizija podataka koji se odnose na 2004. godinu. Naime, tokom 2004. godine postalo je tehnički moguće pratiti robne transakcije između Crne Gore i Srbije na osnovu podataka Republičke uprave carina Crne Gore, odnosno carinskih deklaracija. Do 2004. godine izvor za praćenje ovih tokova su bili jedino podaci poslovnih banaka o ostvarenom platnom prometu sa inostranstvom, odnosno ITRS.

**MONETARY AGGREGATS****The sources of data**

*For preparation of monetary statistics are: the balance sheets of the Central Bank of Montenegro and of banks. Banks submit their data according to the Decision on reports that banks submit to the Central Bank of Montenegro.*

*The Central Bank of Montenegro is responsible for the collection and processing of the data of monetary statistics.*

**Definitions**

***Monetary base (M0)** comprises banks' deposits in the CBM -Payment Operations (banks' giro accounts and allocated reserve requirement until January 2008, excluding the part which banks keep as treasury bills) and the estimated amount of cash in circulation.*

***Monetary aggregate (M1)** comprises M0, demand deposits by the non-banking sector with banks and the CBM, in EUR and other currencies, excluding deposits of the central Government.*

***Monetary aggregate (M11)** comprises M1 plus the central Government's demand deposits in EUR and other currencies.*

***Monetary aggregate (M2)** includes M1 and non-banking sector's time deposits with banks and CBM, in EUR and other currencies, excluding deposits of the central Government.*

***Monetary aggregate (M12)** comprises M11 plus the central Government's time deposits in EUR and other currencies.*

***Deposits by households** – the table present the balance of total deposits of individuals by households at the end of period and their structure by time.*

**THE BALANCE OF PAYMENT OF MONTENEGRO**

*The balance of payments is prepared according to the methodology prescribed by the International Monetary Fund (Balance of Payment, 1993). The sources of data are: Custom Administration of Montenegro, MONSTAT, Montenegrin Electric Enterprise, the Ministry of Finance, commercial banks, and the Central Bank of Montenegro. The balance of payments is presented in EUR. Recalculation of the transaction values from the original currency to the reporting currency is performed by: using the mean exchange rate from the Central Bank of Montenegro and at the end of the period with evaluation transactions whose change is monitored using daily mean exchange rate.*

*The revision of data referring to 2004 was done in the beginning of 2005. Namely, it was technically possible in 2004 to follow transaction of goods between Montenegro and Serbia on the basis of data from Customs Administration of Montenegro i.e., the customs declarations. Until 2004 the source for viewing these currents was only data of banks about the achieved balance of payments with foreign countries, i.e., ITRS.*

Izvor podataka o spoljnoj trgovini od 2005. godine je MONSTAT. U 2008. godini izvršena je revizija podataka o spoljnoj trgovini za 2007. godinu u skladu sa promjenom metodologije koju koristi MONSTAT. Podaci o spoljnoj trgovini u platnom bilansu Crne Gore za 2007. i 2008. godinu prikazani su po opštem sistemu trgovine. CBCG vrši prilagođavanje podataka dobijenih od MONSTAT-a za potrebe platnog bilansa u skladu sa metodologijom MMF-a (Balance of Payments Manual, Fifth edition, IMF, 1993).

Kod evidencije transportnih usluga koriste se podaci banaka o ostvarenom platnom prometu sa inostranstvom.

Prihodi od **putovanja** obuhvataju procijenjene prihode od turizma, koji se dopunjavaju sa podacima o pruženim zdravstveno-rekreativnim uslugama i potrošnjom u cilju školovanja. Do prihoda od turizma se dolazi na osnovu broja noćenja (podatak MONSTAT-a) i procijenjene prosječne dnev-ne potrošnje. Početkom 2006. godine korigovan je model za procjenu prihoda od turizma, korekcija se odnosi na 2003. i 2004. godinu. Podaci o rashodima za turizam dobijaju se na osnovu ostvarenog platnog prometa sa inostranstvom.

Finansijske usluge (usluge osiguranje i reosiguranja, zastupnička i posrednička provizija i provizija i troškovi u bankarskom poslovanju) se prate na osnovu statistike platnog prometa sa inostranstvom. Ostale usluge obuhvataju građevinske usluge, ptt i komunikacijske usluge, usluge osiguranja, kompjuterske i informacione usluge, autorska prava i honorare od izdavanja dozvola i ostale poslovne usluge. Podaci o njima se dobijaju iz statistike platnog prometa sa inostranstvom, a na osnovu izvještaja banaka.

Račun dohotka uključuje podatke iz statistike platnog prometa sa inostranstvom o kompenzacijama, zaposlenima, plaćanjima i naplatama po osnovu kamata, plaćenim i naplaćenim dividendama. Izvor podataka su izvještaji banaka i CBCG.

Tekući transferi obuhvataju podatke o transferima sektora vlade i ostalih sektora koji se dobijaju iz statistike platnog prometa sa inostranstvom.

Direktne i portfolio investicije prate se na osnovu podataka statistike platnog prometa sa inostranstvom i sprovedenih anketa. Ostale investicije koje obuhvataju podatke o kreditima, trgovinskim kreditima, gotovini i depozitima se dobijaju iz statistike platnog prometa sa inostranstvom.

Rezerve Centralne banke Crne Gore obuhvataju sredstva komercijalnih banaka deponovana kod ino banaka, sredstva Centralne banke deponovana kod ino banaka, sredstva u trezoru CBCG i rezervne pozicije kod MMF-a. Izvor podataka je CBCG (monetarna statistika).

*Since 2005, the source of data about external trade is MONSTAT. In 2008. accomplished revision data from external trade for 2007 with methodology which use MONSTAT. CBM makes adjustments of data received from MONSTAT in order to harmonize them with the IMF methodology (Balance of Payments Manual, Fifth edition, IMF, 1993).*

*The registering of transportation services uses banks' data on performed international payment operations.*

*Incomes from travelling include estimated incomes from tourism, which are supplemented by data on provided health- recreation services and expenditures for education. Data on expenditures in tourism are obtained on the basis of the number of tourist overnight stays (data from MONSTAT) and estimated average daily consumption.*

*The model for estimation of incomes from tourism was modified in the beginning of 2006, and the correction refers to 2003 and 2004. Data on expenditures in tourism are obtained on the basis of international payment operations.*

*Financial services (insurance and reinsurance, representative and mediation commission fees, and commission fees and expenses for banking operations) are covered on the basis of foreign payment operations statistics. Other services include investment work in foreign countries, PTT and communication services, forwarding services, expenses for the maintenance of representative offices, computer and information technology services, author's fee, and fee for license issuance, as well as other business services. The data is obtained from foreign payment operations statistics and banks' reports.*

*Income statement comprises data from foreign payment operations statistics on compensations to employees, payments, and charged dividends. The source of data is banks' reports.*

*Current transfers include data about transfers of Government sector and other sectors received from balance of payment with foreign countries.*

*Direct and portfolio investments are followed on the basis of data of international payment operations statistics and conducted surveys. Other investments include data about loans, trade loans, cash and deposits and are obtained from the balance of payment statistics with foreign countries.*

*The Central Bank of Montenegro's reserves comprise commercial banks' fund deposited in international bank and the CBM funds deposited in foreign banks, funds in the CBM treasury and reserve positions in IMF. The source of data is CBM (monetary statistics).*

REDAKCIJA / EDITORIAL BOARD :

RAJKO LAKOVIĆ, rukovodilac / coordinator  
Mr. Gordana Radojević, Gojko Dragaš, Mašan Raičević  
Branka Šušić – Radovanović,  
Radmila Šišević, Darko Krkeljić

Tehnički urednik / *Editor* : Radmila Šišević  
Grafički prikazi / *Graphs* : Radmila Šišević  
Prevod / *Translated by*: Irena Mihailović

IZDAJE I ŠTAMPA: Zavod za statistiku Crne Gore – MONSTAT, Podgorica, IV Proleterske br. 2  
Prilikom korišćenja navesti izvor – preporučuje se skraćenica – MSP, br.- /2008

ODGOVARA: Radomir Đurović, direktor.

Izlazi 25-og u mjesecu. Tiraž 150 primjeraka. Prodajno odjeljenje: Tel: +382 20 230-773

*PUBLISHED AND PRINTED BY: Statistical Office of Montenegro – MONSTAT, Podgorica, IV Proleterske no. 2*

*Data using is subject to quoting source – abbreviation recommended: MSR, no. -/2008*

*RESPONSIBLE: Radomir Đurović, Director.*

*Issued on 25<sup>th</sup> in a month. Circulation 150 copies. Department of sales: +382 20 230-773*

E-mail: [contact@monstat.org](mailto:contact@monstat.org) Web Site: [www.monstat.org](http://www.monstat.org)