

## External trade of Montenegro January-March 2014

**The total external trade** of Montenegro for period January-March 2014 is EUR 410 million, indicating the drop of 9.3% in comparison with the same period of the previous year.

The value of **exports of goods** is EUR 69.4 million, what is 22.1% less compared to the same period of previous year, **and imports** are EUR 340.6 million, what is 6.2% less compared to the same period of previous year.

**The coverage of import by export** is 20.4%, and it is lower compared to the coverage for the same period of previous year, when it was 24.6%.

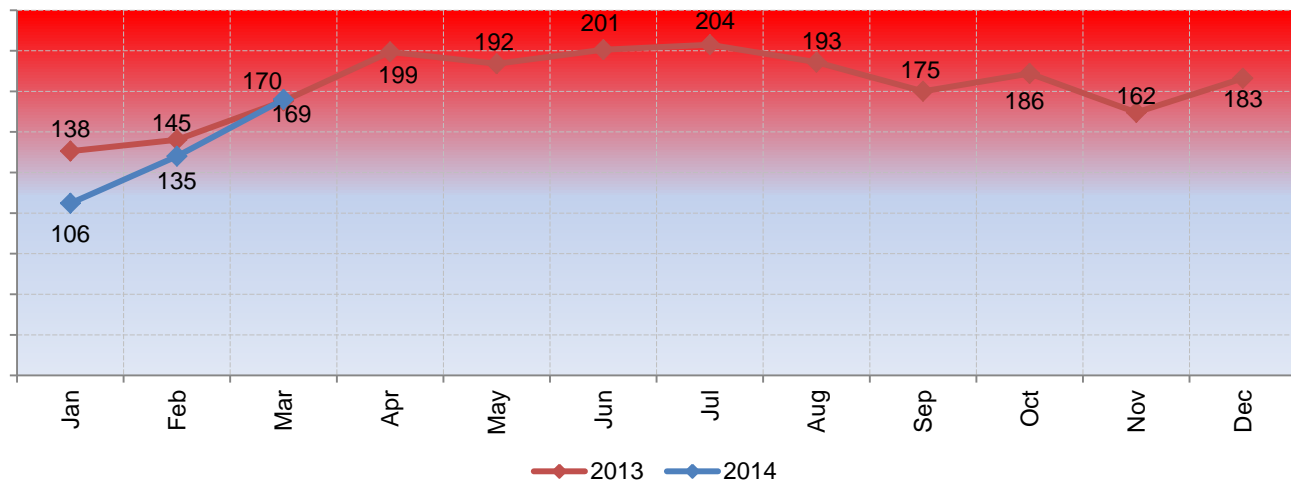
**Structure of exports** in accordance with the SITC (Standard International Trade Classification) the most present products are **Manufactured goods classified chiefly by material** – Section 6, in amount of EUR 19.9 million (consisted of: Non-ferrous metals with the amount of EUR 17 million, and Iron and steel with EUR 1.3 million).

**The structure of imports** in accordance with the classification SITC (Standard International Trade Classification) is presented mostly products of Section 7 – **Machinery and transport equipment** with EUR 68 million (consisted of: Road vehicles with EUR 19.5 million, and Electrical machinery, apparatus and appliances with EUR 13.4 million).

**Main trading partners in exports** with individual basis were: Serbia (EUR 20 million), Republic of Croatia (EUR 14.9 million) and Slovenia (EUR 5 million).

**Main trading partners in imports** with individual basis were: Serbia (EUR 92.4 million), Bosnia and Herzegovina (EUR 30.9 million), and China (EUR 28.6 million). The highest external trade trend was with CEFTA and EU countries.

Chapter 1. External trade trend of Montenegro in mil. EUR



**Table 1. External trade trend of Montenegro 2009 – February 2014**

| thous. EUR  |                  |                |                   |
|-------------|------------------|----------------|-------------------|
| PERIOD      | IMPORT           | EXPORT         | TRADE BALANCE     |
| <b>2009</b> | <b>1 654 170</b> | <b>277 011</b> | <b>-1 377 159</b> |
| <b>2010</b> | <b>1 657 329</b> | <b>330 367</b> | <b>-1 326 963</b> |
| <b>2011</b> | <b>1 823 337</b> | <b>454 381</b> | <b>-1 368 956</b> |
| <b>2012</b> |                  |                |                   |
| January     | 99 919           | 27 473         | -72 446           |
| February    | 106 537          | 23 911         | -82 626           |
| March       | 191 452          | 33 380         | -158 072          |
| April       | 150 965          | 31 239         | -119 726          |
| May         | 167 739          | 34 502         | -133 237          |
| June        | 170 814          | 31 929         | -138 885          |
| July        | 177 612          | 31 294         | -146 318          |
| August      | 173 384          | 31 774         | -141 610          |
| September   | 147 702          | 30 122         | -117 580          |
| October     | 158 644          | 26 476         | -132 168          |
| November    | 136 601          | 32 350         | -104 251          |
| December    | 139 480          | 32 444         | -107 036          |
| <b>2013</b> |                  |                |                   |
| January     | 110 222          | 27 984         | -82 238           |
| February    | 113 944          | 31 259         | -82 685           |
| March       | 138 769          | 29 952         | -108 816          |
| April       | 162 399          | 36 946         | -125 453          |
| May         | 152 332          | 39 425         | -112 907          |
| June        | 170 439          | 30 555         | -139 884          |
| July        | 172 631          | 31 820         | -140 811          |
| August      | 164 918          | 28 418         | -136 501          |
| September   | 146 543          | 28 976         | -117 567          |
| October     | 161 413          | 24 551         | -136 863          |
| November    | 130 733          | 31 182         | -99 551           |
| December    | 149 007          | 34 518         | -114 490          |
| <b>2014</b> |                  |                |                   |
| January     | 83 024           | 22 565         | -60 460           |
| February    | 112 692          | 22 218         | -90 474           |
| March       | 144 886          | 24 656         | -120 230          |

**Table 2. Import of Montenegro by continents**

| Period      | thous. EUR       |                  |               |               |                |                          |
|-------------|------------------|------------------|---------------|---------------|----------------|--------------------------|
|             | World            | Europe           | Africa        | America       | Asia           | Oceania and polar region |
| <b>2009</b> | <b>1 654 170</b> | <b>1 450 892</b> | <b>2 708</b>  | <b>56 159</b> | <b>143 926</b> | <b>485</b>               |
| <b>2010</b> | <b>1 657 329</b> | <b>1 448 409</b> | <b>4 541</b>  | <b>53 873</b> | <b>149 908</b> | <b>598</b>               |
| <b>2011</b> | <b>1 823 337</b> | <b>1 592 450</b> | <b>13 835</b> | <b>50 543</b> | <b>166 087</b> | <b>422</b>               |
| <b>2012</b> |                  |                  |               |               |                |                          |
| January     | 99 919           | 88 115           | 199           | 3 823         | 7 761          | 21                       |
| February    | 106 537          | 92 541           | 185           | 3 462         | 10 328         | 21                       |
| Mach        | 191 452          | 147 445          | 280           | 5 935         | 37 762         | 30                       |
| April       | 150 965          | 132 537          | 320           | 2 949         | 15 143         | 17                       |
| May         | 167 739          | 148 930          | 247           | 4 034         | 14 468         | 59                       |
| June        | 170 814          | 152 038          | 438           | 2 976         | 15 326         | 36                       |
| July        | 177 612          | 158 976          | 381           | 3 538         | 14 673         | 45                       |
| August      | 173 384          | 154 286          | 372           | 3 685         | 14 939         | 102                      |
| September   | 147 702          | 128 329          | 394           | 3 398         | 15 471         | 110                      |
| October     | 158 644          | 139 642          | 288           | 3 154         | 15 549         | 11                       |
| November    | 136 601          | 118 568          | 246           | 2 913         | 14 830         | 45                       |
| December    | 139 480          | 122 993          | 500           | 2 856         | 13 105         | 26                       |
| <b>2013</b> |                  |                  |               |               |                |                          |
| January     | 110 222          | 77 226           | 350           | 2 068         | 30 542         | 35                       |
| February    | 113 944          | 97 973           | 249           | 2 611         | 13 090         | 21                       |
| Mach        | 138 769          | 120 361          | 319           | 3 029         | 15 039         | 21                       |
| April       | 162 399          | 141 432          | 436           | 3 606         | 16 698         | 227                      |
| May         | 152 332          | 133 383          | 550           | 2 997         | 15 366         | 36                       |
| June        | 170 439          | 149 609          | 872           | 3 373         | 16 553         | 32                       |
| July        | 172 631          | 152 911          | 526           | 3 491         | 15 649         | 54                       |
| August      | 164 918          | 144 458          | 577           | 4 782         | 15 063         | 39                       |
| September   | 146 543          | 125 019          | 552           | 3 473         | 17 451         | 47                       |
| October     | 161 413          | 140 539          | 431           | 3 911         | 16 521         | 11                       |
| November    | 130 733          | 114 681          | 213           | 2 750         | 13 037         | 52                       |
| December    | 149 007          | 130 321          | 255           | 3 168         | 15 230         | 34                       |
| <b>2014</b> |                  |                  |               |               |                |                          |
| January     | 83 024           | 71 865           | 127           | 1 917         | 9 087          | 28                       |
| February    | 112 692          | 95 806           | 353           | 2 124         | 14 338         | 71                       |
| March       | 144 886          | 122 028          | 414           | 3 117         | 19 196         | 131                      |

**Table 3. Share of external trade by continents in %**

| Year        | World | Europe | Africa | America | Asia | Oceania and polar region |
|-------------|-------|--------|--------|---------|------|--------------------------|
| <b>2009</b> | 100   | 88     | 0      | 3       | 9    | 0                        |
| <b>2010</b> | 100   | 87     | 0      | 3       | 9    | 0                        |
| <b>2011</b> | 100   | 87     | 1      | 3       | 9    | 0                        |
| <b>2012</b> | 100   | 87     | 0      | 2       | 10   | 0                        |
| <b>2013</b> | 100   | 87     | 0      | 2       | 11   | 0                        |

**Table 4. Exports of Montenegro by continents**

| Period      | thous. EUR     |                |               |              |              |                          |
|-------------|----------------|----------------|---------------|--------------|--------------|--------------------------|
|             | World          | Europe         | Africa        | America      | Asia         | Oceania and polar region |
| <b>2009</b> | <b>277 011</b> | <b>265 753</b> | <b>958</b>    | <b>7 559</b> | <b>2 741</b> | <b>0</b>                 |
| <b>2010</b> | <b>330 367</b> | <b>325 210</b> | <b>792</b>    | <b>617</b>   | <b>3 574</b> | <b>173</b>               |
| <b>2011</b> | <b>454 381</b> | <b>440 489</b> | <b>10 028</b> | <b>797</b>   | <b>2 957</b> | <b>110</b>               |
| <b>2012</b> |                |                |               |              |              |                          |
| January     | 27 473         | 27 280         | 0             | 83           | 97           | 13                       |
| February    | 23 911         | 23 713         | 117           | 1            | 81           | 0                        |
| Mach        | 33 380         | 33 075         | 1             | 40           | 264          | 0                        |
| April       | 31 239         | 30 795         | 6             | 173          | 265          | 0                        |
| May         | 34 502         | 33 324         | 3             | 85           | 1 080        | 10                       |
| June        | 31 929         | 30 705         | 9             | 81           | 1 134        | 0                        |
| July        | 31 294         | 30 721         | 7             | 414          | 153          | 0                        |
| August      | 31 774         | 30 942         | 254           | 91           | 473          | 14                       |
| September   | 30 122         | 29 590         | 5             | 23           | 505          | 0                        |
| October     | 26 476         | 25 579         | 507           | 20           | 370          | 0                        |
| November    | 32 350         | 30 099         | 597           | 177          | 1 466        | 10                       |
| December    | 32 444         | 30 943         | 576           | 104          | 820          | 0                        |
| <b>2013</b> |                |                |               |              |              |                          |
| January     | 27 984         | 27 069         | 610           | 186          | 110          | 9                        |
| February    | 31 259         | 30 239         | 579           | 33           | 393          | 14                       |
| Mach        | 29 952         | 27 524         | 1 197         | 31           | 1 201        | 0                        |
| April       | 36 946         | 36 018         | 625           | 57           | 234          | 14                       |
| May         | 39 425         | 38 504         | 438           | 151          | 333          | 0                        |
| June        | 30 555         | 30 048         | 227           | 52           | 229          | 0                        |
| July        | 31 820         | 30 231         | 443           | 186          | 960          | 0                        |
| August      | 28 418         | 27 807         | 403           | 13           | 136          | 59                       |
| September   | 28 976         | 28 287         | 296           | 151          | 241          | 0                        |
| October     | 24 551         | 23 713         | 490           | 38           | 296          | 15                       |
| November    | 31 182         | 30 338         | 200           | 90           | 554          | 0                        |
| December    | 34 518         | 30 890         | 838           | 45           | 2 745        | 0                        |
| <b>2014</b> |                |                |               |              |              |                          |
| January     | 22 565         | 22 239         | 109           | 32           | 171          | 13                       |
| February    | 22 218         | 21 272         | 464           | 81           | 400          | 0                        |
| March       | 24 656         | 23 910         | 444           | 36           | 266          | 0                        |

**Table 5. Share of external trade by continents in %**

| Year        | World | Europe | Africa | America | Asia | Oceania and polar region |
|-------------|-------|--------|--------|---------|------|--------------------------|
| <b>2009</b> | 100   | 96     | 0      | 3       | 1    | 0                        |
| <b>2010</b> | 100   | 98     | 0      | 0       | 1    | 0                        |
| <b>2011</b> | 100   | 97     | 2      | 0       | 1    | 0                        |
| <b>2012</b> | 100   | 97     | 1      | 0       | 2    | 0                        |
| <b>2013</b> | 100   | 96     | 2      | 0       | 2    | 0                        |

**Table 6. External trade of Montenegro by continents and selected countries for January-March 2013/2014**

| TRADING PARTNERS          | EXPORT       |              |              |              | IMPORT       |              |              |              | TRADE BALANCE |              |
|---------------------------|--------------|--------------|--------------|--------------|--------------|--------------|--------------|--------------|---------------|--------------|
|                           | Jan-Mar 2013 |              | Jan-Mar 2014 |              | Jan-Mar 2013 |              | Jan-Mar 2014 |              | Jan-Mar 2013  | Jan-Mar 2014 |
|                           | %            | in thous.EUR | %            | in thous.EUR | %            | in thous.EUR | %            | in thous.EUR | in thous.EUR  | in thous.EUR |
| <b>WORLD</b>              | 100          | 89 195       | 100          | 69 439       | 100          | 362 934      | 100          | 340 602      | -273 739      | -271 163     |
| <b>Europe</b>             | 95           | 84 832       | 97           | 67 421       | 81           | 295 560      | 85           | 289 699      | -210 728      | -222 278     |
| <b>EU-28<sup>1</sup></b>  | 47           | 42 009       | 47           | 32 810       | 43           | 156 270      | 42           | 144 364      | -114 261      | -111 554     |
| <b>CEFTA <sup>2</sup></b> | 43           | 38 568       | 44           | 30 381       | 35           | 126 136      | 39           | 133 715      | -87 568       | -103 334     |
| <b>Africa</b>             | 3            | 2 385        | 1            | 1 017        | 0            | 919          | 0            | 894          | 1 466         | 123          |
| <b>Asia</b>               | 2            | 1 704        | 1            | 837          | 16           | 58 671       | 13           | 42 621       | -56 967       | -41 784      |
| <b>America</b>            | 0            | 249          | 0            | 149          | 2            | 7 708        | 2            | 7 159        | -7 459        | -7 010       |
| <b>Oceania</b>            | 0            | 24           | 0            | 13           | 0            | 77           | 0            | 230          | -53           | -217         |
| <b>USA</b>                | 0            | 247          | 0            | 145          | 1            | 3 238        | 1            | 2 795        | -2 991        | -2 650       |
| <b>China</b>              | 1            | 1 153        | 0            | 283          | 13           | 46 355       | 8            | 28 613       | -45 202       | -28 330      |
| <b>Russia</b>             | 1            | 1 113        | 2            | 1 709        | 0            | 656          | 0            | 987          | 457           | 722          |
| <b>Switzerland</b>        | 1            | 682          | 2            | 1 582        | 1            | 3 543        | 1            | 2 505        | -2 861        | -923         |
| <b>Japan</b>              | 0            | 266          | 0            | 303          | 1            | 3 536        | 1            | 4 021        | -3 270        | -3 718       |
| <b>Turkey</b>             | 3            | 2 358        | 1            | 785          | 2            | 5 956        | 2            | 7 118        | -3 598        | -6 333       |
| <b>Brazil</b>             | 0            | 0            | 0            | 0            | 1            | 2 287        | 1            | 2 574        | -2 287        | -2 574       |

<sup>1</sup> From 1 July 2013, Republic of Croatia is 28 Member States of EU.

<sup>2</sup> Albania, Bosnia and Herzegovina, Moldavia, Republic of Macedonia, Republic of Serbia and UNMIK Kosovo

**Table 7. External trade by EU-28 countries and countries under CEFTA agreement**

| TRADING PARTNERS       | EXPORT     |                |               |               | IMPORT     |                  |                |                | TRADE BALANCE     |                 |                 |
|------------------------|------------|----------------|---------------|---------------|------------|------------------|----------------|----------------|-------------------|-----------------|-----------------|
|                        | %          | in thous.EUR   |               |               | %          | in thous.EUR     |                |                | in thous.EUR      |                 |                 |
|                        |            | 2013           | 2013 Jan-Mar  | 2014 Jan-Mar  |            | 2013             | 2013 Jan-Mar   | 2014 Jan-Mar   | 2013              | 2013 Jan-Mar    | 2014 Jan-Mar    |
| <b>WORLD</b>           | <b>100</b> | <b>375 585</b> | <b>89 195</b> | <b>69 439</b> | <b>100</b> | <b>1 773 352</b> | <b>362 934</b> | <b>340 602</b> | <b>-1 397 767</b> | <b>-273 739</b> | <b>-271 163</b> |
| <b>EU-28</b>           | <b>41</b>  | <b>155 791</b> | <b>42 009</b> | <b>32 810</b> | <b>44</b>  | <b>784 201</b>   | <b>156 270</b> | <b>144 364</b> | <b>-628 410</b>   | <b>-114 261</b> | <b>-111 554</b> |
| Austria                | 1          | 3 852          | 1 454         | 149           | 2          | 33 505           | 6 906          | 5 775          | -29 652           | -5 451          | -5 626          |
| Belgium                | 0          | 575            | 88            | 11            | 1          | 9 900            | 2 194          | 2 041          | -9 325            | -2 106          | -2 030          |
| Bulgaria               | 0          | 1 415          | 86            | 1 320         | 1          | 9 433            | 2 209          | 1 481          | -8 017            | -2 124          | -162            |
| Czech Republic         | 1          | 4 643          | 1 356         | 1 661         | 1          | 12 015           | 2 277          | 3 076          | -7 373            | -922            | -1 415          |
| Denmark                | 0          | 1 049          | 0             | 528           | 0          | 1 645            | 554            | 339            | -596              | -554            | 189             |
| Estonia                | 0          | 0              | 0             | 0             | 0          | 265              | 47             | 16             | -265              | -47             | -16             |
| Finland                | 0          | 0              | 0             | 0             | 0          | 1 438            | 429            | 88             | -1 438            | -429            | -88             |
| France                 | 1          | 3 312          | 551           | 651           | 1          | 17 503           | 3 170          | 3 602          | -14 191           | -2 619          | -2 951          |
| Greece                 | 1          | 3 594          | 35            | 252           | 8          | 149 796          | 29 579         | 25 184         | -146 202          | -29 544         | -24 932         |
| Netherlands            | 0          | 1 451          | 416           | 171           | 2          | 29 292           | 6 824          | 6 593          | -27 841           | -6 408          | -6 422          |
| Ireland                | 0          | 2              | 0             | 0             | 0          | 2 242            | 612            | 430            | -2 240            | -612            | -430            |
| Italy                  | 4          | 15 722         | 2 998         | 3 168         | 7          | 117 621          | 24 917         | 22 683         | -101 898          | -21 919         | -19 515         |
| Cyprus                 | 0          | 121            | 35            | 0             | 0          | 850              | 127            | 116            | -729              | -93             | -116            |
| Latvia                 | 0          | 3              | 3             | 0             | 0          | 143              | 8              | 17             | -140              | -5              | -17             |
| Lithuania              | 0          | 0              | 0             | 0             | 0          | 215              | 28             | 48             | -215              | -28             | -48             |
| Luxembourg             | 0          | 41             | 1             | 5             | 0          | 147              | 4              | 91             | -106              | -3              | -86             |
| Hungary                | 0          | 1 131          | 453           | 269           | 1          | 21 228           | 3 974          | 4 464          | -20 096           | -3 520          | -4 195          |
| Malta                  | 0          | 313            | 132           | 45            | 0          | 14               | 0              | 49             | 300               | 132             | -4              |
| Germany                | 4          | 13 295         | 2 833         | 1 598         | 7          | 116 468          | 23 492         | 21 333         | -103 173          | -20 659         | -19 735         |
| Poland                 | 1          | 4 289          | 1 391         | 1 641         | 1          | 16 684           | 3 024          | 3 166          | -12 396           | -1 634          | -1 524          |
| Portugal               | 0          | 0              | 0             | 0             | 0          | 773              | 96             | 118            | -772              | -96             | -118            |
| Republic of Croatia    | 16         | 59 548         | 14 627        | 14 863        | 5          | 97 511           | 20 687         | 18 564         | -37 963           | -6 060          | -3 701          |
| Romania                | 0          | 174            | 0             | 105           | 1          | 19 638           | 2 879          | 4 937          | -19 464           | -2 879          | -4 832          |
| Slovakia               | 0          | 189            | 23            | 68            | 0          | 5 554            | 863            | 710            | -5 366            | -840            | -643            |
| Slovenia               | 10         | 36 007         | 14 708        | 4 984         | 4          | 64 136           | 12 396         | 10 775         | -28 129           | 2 312           | -5 791          |
| Spain                  | 0          | 129            | 5             | 41            | 2          | 36 515           | 4 384          | 5 267          | -36 386           | -4 379          | -5 226          |
| Sweden                 | 0          | 1 601          | 118           | 535           | 0          | 7 938            | 1 989          | 1 261          | -6 337            | -1 871          | -726            |
| United Kingdom         | 1          | 3 334          | 696           | 744           | 1          | 11 736           | 2 599          | 2 141          | -8 402            | -1 904          | -1 397          |
| <b>CEFTA</b>           | <b>49</b>  | <b>185 771</b> | <b>38 568</b> | <b>30 381</b> | <b>39</b>  | <b>687 096</b>   | <b>126 136</b> | <b>133 715</b> | <b>-501 325</b>   | <b>-87 568</b>  | <b>-103 334</b> |
| Albania                | 3          | 11 973         | 2 326         | 2 851         | 1          | 25 645           | 4 327          | 5 634          | -13 671           | -2 001          | -2 783          |
| Bosnia and Herzegovina | 5          | 18 385         | 2 646         | 3 258         | 7          | 126 201          | 25 403         | 30 851         | -107 816          | -22 757         | -27 593         |
| Moldavia               | 0          | 0              | 0             | 0             | 0          | 167              | 28             | 39             | -167              | -28             | -39             |
| Republic of Macedonia  | 1          | 2 762          | 441           | 568           | 1          | 25 109           | 4 805          | 4 229          | -22 348           | -4 364          | -3 661          |
| Republic of Serbia     | 36         | 133 473        | 30 149        | 20 047        | 29         | 505 943          | 90 559         | 92 399         | -372 470          | -60 410         | -72 352         |
| UMNIK Kosovo           | 5          | 19 177         | 3 005         | 3 658         | 0          | 4 030            | 1 014          | 562            | 15 147            | 1 991           | 3 095           |
| <b>Other countries</b> | <b>9</b>   | <b>34 024</b>  | <b>8 619</b>  | <b>6 248</b>  | <b>17</b>  | <b>302 055</b>   | <b>80 528</b>  | <b>62 522</b>  | <b>-268 031</b>   | <b>-71 909</b>  | <b>-56 274</b>  |

**Table 8. External trade of Montenegro with EU-28, USA, Japan, and China**

| Period        | EU-28                  |           | USA                    |          | JAPAN                  |          | CHINA                  |          |
|---------------|------------------------|-----------|------------------------|----------|------------------------|----------|------------------------|----------|
|               | Value<br>in thous. EUR | %         | Value<br>in thous. EUR | %        | Value<br>in thous. EUR | %        | Value<br>in thous. EUR | %        |
| <b>EXPORT</b> |                        |           |                        |          |                        |          |                        |          |
| <b>2010</b>   | <b>188 862</b>         | <b>57</b> | <b>461</b>             | <b>0</b> | <b>544</b>             | <b>0</b> | <b>149</b>             | <b>0</b> |
| <b>2011</b>   | <b>273 351</b>         | <b>60</b> | <b>610</b>             | <b>0</b> | <b>1 132</b>           | <b>0</b> | <b>748</b>             | <b>0</b> |
| <b>2012</b>   | <b>189 004</b>         | <b>52</b> | <b>948</b>             | <b>0</b> | <b>1 966</b>           | <b>1</b> | <b>3 802</b>           | <b>1</b> |
| <b>2013</b>   |                        |           |                        |          |                        |          |                        |          |
| January       | 12 540                 | 45        | 186                    | 1        | 0                      | 0        | 72                     | 0        |
| February      | 16 451                 | 53        | 33                     | 0        | 161                    | 1        | 0                      | 0        |
| March         | 13 017                 | 43        | 28                     | 0        | 105                    | 0        | 1 082                  | 4        |
| April         | 14 173                 | 38        | 49                     | 0        | 218                    | 1        | 0                      | 0        |
| May           | 16 188                 | 41        | 138                    | 0        | 236                    | 1        | 30                     | 0        |
| June          | 10 088                 | 33        | 2                      | 0        | 219                    | 1        | 0                      | 0        |
| July          | 13 236                 | 42        | 104                    | 0        | 180                    | 1        | 762                    | 2        |
| August        | 12 440                 | 44        | 11                     | 0        | 55                     | 0        | 0                      | 0        |
| September     | 13 799                 | 48        | 80                     | 0        | 168                    | 1        | 52                     | 0        |
| October       | 11 675                 | 48        | 37                     | 0        | 157                    | 1        | 80                     | 0        |
| November      | 11 593                 | 37        | 63                     | 0        | 347                    | 1        | 115                    | 0        |
| December      | 10 589                 | 31        | 13                     | 0        | 448                    | 1        | 1 714                  | 5        |
| <b>2014</b>   |                        |           |                        |          |                        |          |                        |          |
| January       | 10 222                 | 45        | 32                     | 0        | 88                     | 0        | 42                     | 0        |
| February      | 10 228                 | 46        | 81                     | 0        | 139                    | 1        | 54                     | 0        |
| March         | 12 360                 | 50        | 33                     | 0        | 76                     | 0        | 187                    | 1        |
| <b>IMPORT</b> |                        |           |                        |          |                        |          |                        |          |
| <b>2010</b>   | <b>705 359</b>         | <b>43</b> | <b>15 367</b>          | <b>1</b> | <b>19 822</b>          | <b>1</b> | <b>88 864</b>          | <b>5</b> |
| <b>2011</b>   | <b>807 146</b>         | <b>44</b> | <b>13 959</b>          | <b>1</b> | <b>19 650</b>          | <b>1</b> | <b>103 080</b>         | <b>6</b> |
| <b>2012</b>   | <b>809 886</b>         | <b>44</b> | <b>13 712</b>          | <b>1</b> | <b>15 532</b>          | <b>1</b> | <b>130 615</b>         | <b>7</b> |
| <b>2013</b>   |                        |           |                        |          |                        |          |                        |          |
| January       | 41 527                 | 38        | 683                    | 1        | 1 101                  | 1        | 27 468                 | 25       |
| February      | 51 526                 | 45        | 1 187                  | 1        | 1 176                  | 1        | 9 083                  | 8        |
| March         | 63 217                 | 46        | 1 368                  | 1        | 1 259                  | 1        | 9 803                  | 7        |
| April         | 72 359                 | 45        | 1 482                  | 1        | 1 742                  | 1        | 11 074                 | 7        |
| May           | 66 920                 | 44        | 954                    | 1        | 1 510                  | 1        | 10 162                 | 7        |
| June          | 76 814                 | 45        | 1 111                  | 1        | 1 381                  | 1        | 11 609                 | 7        |
| July          | 76 193                 | 44        | 1 309                  | 1        | 1 454                  | 1        | 10 792                 | 6        |
| August        | 70 555                 | 43        | 1 836                  | 1        | 1 085                  | 1        | 10 343                 | 6        |
| September     | 66 521                 | 45        | 1 099                  | 1        | 1 335                  | 1        | 12 017                 | 8        |
| October       | 70 267                 | 44        | 1 633                  | 1        | 1 434                  | 1        | 11 302                 | 7        |
| November      | 59 913                 | 46        | 1 191                  | 1        | 1 418                  | 1        | 8 763                  | 7        |
| December      | 68 389                 | 46        | 1 464                  | 1        | 1 566                  | 1        | 10 480                 | 7        |
| <b>2014</b>   |                        |           |                        |          |                        |          |                        |          |
| January       | 34 632                 | 42        | 579                    | 1        | 999                    | 1        | 6 054                  | 7        |
| February      | 48 303                 | 43        | 862                    | 1        | 1 165                  | 1        | 9 710                  | 9        |
| March         | 61 430                 | 42        | 1 355                  | 1        | 1 856                  | 1        | 12 850                 | 9        |

**Table 9. Export classified by SITC products for EU, CEFTA, USA, Japan, and China**

| SITC CLASSIFICATION                               | 2011           |            | 2012           |            | 2013           |            | Jan-Mar 2013  | Jan-Mar 2014  |
|---|----------------|------------|----------------|------------|----------------|------------|---------------|---------------|
|   | thous.EUR      | %          | thous.EUR      | %          | thous.EUR      | %          | thous.EUR     | thous.EUR     |
| <b>WORLD</b>                                      | <b>454 381</b> | <b>100</b> | <b>366 896</b> | <b>100</b> | <b>375 585</b> | <b>100</b> | <b>89 195</b> | <b>69 439</b> |
| <b>0-9 TOTAL</b>                                  | 454 381        | 100        | 366 896        | 100        | 375 585        | 100        | 89 195        | 69 439        |
| 0+1 Food, beverages and tobacco                   | 50 662         | 11         | 53 195         | 14         | 53 439         | 14         | 8 347         | 8 681         |
| 2+4 Raw materials                                 | 65 626         | 14         | 59 399         | 16         | 61 924         | 16         | 13 931        | 12 637        |
| 3 Mineral fuels, lubricants and related materials | 62 957         | 14         | 50 463         | 14         | 108 081        | 29         | 26 522        | 18 207        |
| 5 Chemicals                                       | 12 083         | 3          | 11 972         | 3          | 9 239          | 2          | 1 944         | 2 492         |
| 7 Machinery and transport equipment               | 23 899         | 5          | 25 896         | 7          | 25 888         | 7          | 5 186         | 4 676         |
| 6+8 Other manufactured goods                      | 236 353        | 52         | 162 157        | 44         | 110 939        | 30         | 31 761        | 22 428        |
| <b>EU-28</b>                                      | <b>273 351</b> | <b>60</b>  | <b>189 004</b> | <b>52</b>  | <b>155 791</b> | <b>41</b>  | <b>42 009</b> | <b>32 810</b> |
| <b>0-9 TOTAL</b>                                  | 273 351        | 60         | 189 004        | 52         | 155 791        | 41         | 42 009        | 32 810        |
| 0+1 Food, beverages and tobacco                   | 6 771          | 1          | 5 742          | 2          | 5 579          | 1          | 453           | 726           |
| 2+4 Raw materials                                 | 27 763         | 6          | 22 789         | 6          | 20 860         | 6          | 5 383         | 5 299         |
| 3 Mineral fuels, lubricants and related materials | 16 351         | 4          | 11 510         | 3          | 17 807         | 5          | 3 662         | 3 468         |
| 5 Chemicals                                       | 671            | 0          | 1 147          | 0          | 1 539          | 0          | 336           | 1 061         |
| 7 Machinery and transport equipment               | 11 512         | 3          | 13 820         | 4          | 12 889         | 3          | 2 787         | 3 103         |
| 6+8 Other manufactured goods                      | 207 483        | 46         | 130 181        | 35         | 91 042         | 24         | 27 885        | 18 836        |
| <b>CEFTA</b>                                      | <b>137 698</b> | <b>30</b>  | <b>143 667</b> | <b>39</b>  | <b>185 771</b> | <b>49</b>  | <b>38 568</b> | <b>30 381</b> |
| <b>0-9 TOTAL</b>                                  | 137 698        | 30         | 143 667        | 39         | 185 771        | 49         | 38 568        | 30 381        |
| 0+1 Food, beverages and tobacco                   | 39 384         | 9          | 37 988         | 10         | 37 119         | 10         | 5 028         | 5 296         |
| 2+4 Raw materials                                 | 24 871         | 5          | 22 100         | 6          | 27 662         | 7          | 4 952         | 6 523         |
| 3 Mineral fuels, lubricants and related materials | 34 939         | 8          | 37 031         | 10         | 89 440         | 24         | 22 291        | 13 311        |
| 5 Chemicals                                       | 11 357         | 2          | 10 763         | 3          | 7 668          | 2          | 1 608         | 1 414         |
| 7 Machinery and transport equipment               | 9 337          | 2          | 6 259          | 2          | 8 532          | 2          | 1 495         | 1 025         |
| 6+8 Other manufactured goods                      | 17 810         | 4          | 29 526         | 8          | 15 350         | 4          | 3 195         | 2 813         |
| <b>USA</b>  | <b>610</b>     | <b>0</b>   | <b>948</b>     | <b>0</b>   | <b>743</b>     | <b>0</b>   | <b>247</b>    | <b>145</b>    |
| <b>0-9 TOTAL</b>                                  | 610            | 0          | 948            | 0          | 743            | 0          | 247           | 145           |
| 0+1 Food, beverages and tobacco                   | 457            | 0          | 216            | 0          | 529            | 0          | 177           | 106           |
| 2+4 Raw materials                                 | 11             | 0          | 0              | 0          | 25             | 0          | 22            | 3             |
| 3 Mineral fuels, lubricants and related materials | 0              | 0          | 0              | 0          | 0              | 0          | 0             | 0             |
| 5 Chemicals                                       | 0              | 0          | 0              | 0          | 26             | 0          | 0             | 0             |
| 7 Machinery and transport equipment               | 59             | 0          | 518            | 0          | 152            | 0          | 48            | 37            |
| 6+8 Other manufactured goods                      | 83             | 0          | 214            | 0          | 11             | 0          | 0             | 0             |
| <b>Japan</b>                                      | <b>1 132</b>   | <b>0</b>   | <b>1 966</b>   | <b>1</b>   | <b>2 295</b>   | <b>1</b>   | <b>266</b>    | <b>303</b>    |
| <b>0-9 TOTAL</b>                                  | 1 132          | 0          | 1 966          | 1          | 2 295          | 1          | 266           | 303           |
| 0+1 Food, beverages and tobacco                   | 0              | 0          | 0              | 0          | 4              | 0          | 0             | 0             |
| 2+4 Raw materials                                 | 0              | 0          | 113            | 0          | 0              | 0          | 0             | 0             |
| 3 Mineral fuels, lubricants and related materials | 0              | 0          | 0              | 0          | 0              | 0          | 0             | 1             |
| 5 Chemicals                                       | 0              | 0          | 0              | 0          | 0              | 0          | 0             | 0             |
| 7 Machinery and transport equipment               | 1 121          | 0          | 1 852          | 1          | 2 291          | 1          | 266           | 302           |
| 6+8 Other manufactured goods                      | 11             | 0          | 0              | 0          | 0              | 0          | 0             | 0             |
| <b>China</b>                                      | <b>748</b>     | <b>0</b>   | <b>3 802</b>   | <b>1</b>   | <b>3 907</b>   | <b>1</b>   | <b>1 153</b>  | <b>283</b>    |
| <b>0-9 TOTAL</b>                                  | 748            | 0          | 3 802          | 1          | 3 907          | 1          | 1 153         | 283           |
| 0+1 Food, beverages and tobacco                   | 746            | 0          | 1 116          | 0          | 405            | 0          | 119           | 255           |
| 2+4 Raw materials                                 | 0              | 0          | 2 478          | 1          | 3 454          | 1          | 1 032         | 26            |
| 3 Mineral fuels, lubricants and related materials | 0              | 0          | 0              | 0          | 0              | 0          | 0             | 0             |
| 5 Chemicals                                       | 0              | 0          | 2              | 0          | 0              | 0          | 0             | 0             |
| 7 Machinery and transport equipment               | 2              | 0          | 141            | 0          | 47             | 0          | 3             | 1             |
| 6+8 Other manufactured goods                      | 0              | 0          | 65             | 0          | 0              | 0          | 0             | 1             |

**Table 10. Import classified by SITC products for EU, CEFTA, USA, Japan, and China**

| SITC CLASSIFICATION                               | 2011             |            | 2012             |            | 2013             |            | Jan-Mar 2013   | Jan-Mar 2014   |
|---|------------------|------------|------------------|------------|------------------|------------|----------------|----------------|
|   | thous. EUR       | %          | thous. EUR       | %          | thous. EUR       | %          | thous. EUR     | thous. EUR     |
| <b>WORLD</b>                                      | <b>1 823 337</b> | <b>100</b> | <b>1 820 850</b> | <b>100</b> | <b>1 773 352</b> | <b>100</b> | <b>362 934</b> | <b>340 602</b> |
| <b>0-9 TOTAL</b>                                  | 1 823 337        | 100        | 1 820 850        | 100        | 1 773 352        | 100        | 362 934        | 340 602        |
| 0+1 Food, beverages and tobacco                   | 417 706          | 23         | 421 669          | 23         | 432 951          | 24         | 78 712         | 75 783         |
| 2+4 Raw materials                                 | 99 263           | 5          | 76 431           | 4          | 62 992           | 4          | 14 624         | 13 183         |
| 3 Mineral fuels, lubricants and related materials | 330 590          | 18         | 334 356          | 18         | 257 993          | 15         | 53 479         | 46 307         |
| 5 Chemicals                                       | 169 589          | 9          | 169 570          | 9          | 179 280          | 10         | 36 977         | 36 152         |
| 7 Machinery and transport equipment               | 315 905          | 17         | 332 870          | 18         | 345 352          | 19         | 85 026         | 67 964         |
| 6+8 Other manufactured goods                      | 489 549          | 27         | 485 528          | 27         | 490 593          | 28         | 94 097         | 101 213        |
| <b>EU-28</b>                                      | <b>807 146</b>   | <b>44</b>  | <b>809 886</b>   | <b>44</b>  | <b>784 201</b>   | <b>44</b>  | <b>156 270</b> | <b>144 364</b> |
| <b>0-9 TOTAL</b>                                  | 807 146          | 44         | 809 886          | 44         | 784 201          | 44         | 156 270        | 144 364        |
| 0+1 Food, beverages and tobacco                   | 131 315          | 7          | 142 690          | 8          | 153 036          | 9          | 31 100         | 29 402         |
| 2+4 Raw materials                                 | 11 200           | 1          | 10 011           | 1          | 9 861            | 1          | 1 966          | 2 284          |
| 3 Mineral fuels, lubricants and related materials | 214 403          | 12         | 221 606          | 12         | 183 975          | 10         | 36 351         | 31 616         |
| 5 Chemicals                                       | 85 113           | 5          | 81 922           | 4          | 84 468           | 5          | 17 691         | 15 419         |
| 7 Machinery and transport equipment               | 182 862          | 10         | 173 940          | 10         | 177 782          | 10         | 34 059         | 32 043         |
| 6+8 Other manufactured goods                      | 181 520          | 10         | 179 291          | 10         | 170 889          | 10         | 35 084         | 33 601         |
| <b>CEFTA</b>                                      | <b>726 171</b>   | <b>40</b>  | <b>702 314</b>   | <b>39</b>  | <b>687 096</b>   | <b>39</b>  | <b>126 136</b> | <b>133 715</b> |
| <b>0-9 TOTAL</b>                                  | 726 171          | 40         | 702 314          | 39         | 687 096          | 39         | 126 136        | 133 715        |
| 0+1 Food, beverages and tobacco                   | 241 996          | 13         | 242 652          | 13         | 244 494          | 14         | 41 059         | 40 531         |
| 2+4 Raw materials                                 | 79 590           | 4          | 60 472           | 3          | 50 795           | 3          | 12 092         | 10 454         |
| 3 Mineral fuels, lubricants and related materials | 105 403          | 6          | 92 903           | 5          | 67 440           | 4          | 13 475         | 13 894         |
| 5 Chemicals                                       | 65 973           | 4          | 66 850           | 4          | 75 899           | 4          | 14 945         | 16 601         |
| 7 Machinery and transport equipment               | 35 753           | 2          | 40 451           | 2          | 41 658           | 2          | 7 291          | 9 865          |
| 6+8 Other manufactured goods                      | 197 454          | 11         | 198 985          | 11         | 206 810          | 12         | 37 274         | 42 371         |
| <b>USA</b>  | <b>13 959</b>    | <b>1</b>   | <b>13 712</b>    | <b>1</b>   | <b>15 317</b>    | <b>1</b>   | <b>3 238</b>   | <b>2 795</b>   |
| <b>0-9 TOTAL</b>                                  | 13 959           | 1          | 13 712           | 1          | 15 317           | 1          | 3 238          | 2 795          |
| 0+1 Food, beverages and tobacco                   | 890              | 0          | 1 128            | 0          | 1 332            | 0          | 219            | 195            |
| 2+4 Raw materials                                 | 215              | 0          | 71               | 0          | 113              | 0          | 27             | 43             |
| 3 Mineral fuels, lubricants and related materials | 83               | 0          | 32               | 0          | 153              | 0          | 1              | 21             |
| 5 Chemicals                                       | 3 042            | 0          | 3 020            | 0          | 2 866            | 0          | 604            | 638            |
| 7 Machinery and transport equipment               | 5 933            | 0          | 6 195            | 0          | 7 007            | 0          | 1 938          | 969            |
| 6+8 Other manufactured goods                      | 3 796            | 0          | 3 266            | 0          | 3 846            | 0          | 449            | 930            |
| <b>Japan</b>                                      | <b>19 650</b>    | <b>1</b>   | <b>15 532</b>    | <b>1</b>   | <b>16 463</b>    | <b>1</b>   | <b>3 536</b>   | <b>4 021</b>   |
| <b>0-9 TOTAL</b>                                  | 19 650           | 1          | 15 532           | 1          | 16 463           | 1          | 3 536          | 4 021          |
| 0+1 Food, beverages and tobacco                   | 17               | 0          | 12               | 0          | 10               | 0          | 0              | 1              |
| 2+4 Raw materials                                 | 3                | 0          | 4                | 0          | 3                | 0          | 3              | 12             |
| 3 Mineral fuels, lubricants and related materials | 20               | 0          | 43               | 0          | 35               | 0          | 5              | 8              |
| 5 Chemicals                                       | 447              | 0          | 463              | 0          | 461              | 0          | 57             | 312            |
| 7 Machinery and transport equipment               | 14 815           | 1          | 11 337           | 1          | 12 408           | 1          | 2 519          | 2 918          |
| 6+8 Other manufactured goods                      | 4 348            | 0          | 3 673            | 0          | 3 546            | 0          | 954            | 769            |
| <b>China</b>                                      | <b>103 080</b>   | <b>6</b>   | <b>130 615</b>   | <b>7</b>   | <b>142 895</b>   | <b>8</b>   | <b>46 355</b>  | <b>28 613</b>  |
| <b>0-9 TOTAL</b>                                  | 103 080          | 6          | 130 615          | 7          | 142 895          | 8          | 46 355         | 28 613         |
| 0+1 Food, beverages and tobacco                   | 898              | 0          | 931              | 0          | 1 132            | 0          | 291            | 205            |
| 2+4 Raw materials                                 | 398              | 0          | 348              | 0          | 435              | 0          | 102            | 74             |
| 3 Mineral fuels, lubricants and related materials | 2                | 0          | 14               | 0          | 11               | 0          | 3              | 0              |
| 5 Chemicals                                       | 2 852            | 0          | 3 919            | 0          | 2 969            | 0          | 714            | 308            |
| 7 Machinery and transport equipment               | 45 215           | 2          | 66 991           | 4          | 76 129           | 4          | 33 060         | 14 263         |
| 6+8 Other manufactured goods                      | 53 714           | 3          | 58 411           | 3          | 62 220           | 4          | 12 184         | 13 763         |

**Table 11. Export of Montenegro by SITC sections**

| BREAKDOWN BY<br>SITC SECTIONS                                 | 2011           | 2012           | Index<br>2012<br>2011 | 2013           | Index<br>2013<br>2012 | Jan-Mar<br>2013 | Jan-Mar<br>2014 | Index<br>Jan-Mar 14<br>Jan-Mar 13 |
|---|----------------|----------------|-----------------------|----------------|-----------------------|-----------------|-----------------|-----------------------------------|
|   | thous. EUR     |                |                       | thous. EUR     |                       | thous. EUR      |                 |                                   |
| <b>0-9 TOTAL</b>  | <b>454 381</b> | <b>366 896</b> | <b>81</b>             | <b>375 585</b> | <b>102</b>            | <b>89 195</b>   | <b>69 439</b>   | <b>78</b>                         |
| <b>0 Food and live animals</b>                                | <b>27 583</b>  | <b>27 726</b>  | <b>101</b>            | <b>29 093</b>  | <b>105</b>            | <b>3 988</b>    | <b>4 600</b>    | <b>115</b>                        |
| 00 Live animals   | 12             | 12             | 99                    | 17             | 137                   | 7               | 5               | 74                                |
| 01 Meat and meat preparations                                 | 5 223          | 6 904          | 132                   | 8 730          | 126                   | 1 362           | 1 789           | 131                               |
| 02 Dairy products and eggs                                    | 72             | 151            | 211                   | 1 037          | 686                   | 298             | 115             | 39                                |
| 03 Fish and preparations                                      | 188            | 32             | 17                    | 11             | 36                    | 2               | 9               | 527                               |
| 04 Cereal and cereal products                                 | 3 886          | 5 731          | 147                   | 4 088          | 71                    | 793             | 766             | 97                                |
| 05 Vegetables and fruit                                       | 9 601          | 7 455          | 78                    | 9 058          | 121                   | 206             | 512             | 249                               |
| 06 Sugars, sugar preparations and honey                       | 515            | 15             | 3                     | 24             | 160                   | 1               | 1               | 82                                |
| 07 Coffee, tea, cocoa, spices, and manufactures thereof       | 2 865          | 3 924          | 137                   | 3 963          | 101                   | 996             | 1 074           | 108                               |
| 08 Feeding stuff for animals (not including unmilled cereals) | 82             | 53             | 65                    | 100            | 188                   | 42              | 36              | 84                                |
| 09 Miscellaneous edible products and preparations             | 5 139          | 3 447          | 67                    | 2 065          | 60                    | 281             | 294             | 105                               |
| <b>1 Beverages and tobacco</b>                                | <b>23 079</b>  | <b>25 469</b>  | <b>110</b>            | <b>24 346</b>  | <b>96</b>             | <b>4 358</b>    | <b>4 081</b>    | <b>94</b>                         |
| 11 Beverages  | 22 685         | 23 218         | 102                   | 18 673         | 80                    | 2 296           | 3 066           | 134                               |
| 12 Tobacco and tobacco manufactures                           | 394            | 2 251          | 571                   | 5 673          | 252                   | 2 062           | 1 015           | 49                                |
| <b>2 Crude materials, inedible, except fuels</b>              | <b>64 192</b>  | <b>56 142</b>  | <b>87</b>             | <b>59 654</b>  | <b>106</b>            | <b>13 670</b>   | <b>11 534</b>   | <b>84</b>                         |
| 21 Hides, skins and fur skins, raw                            | 4 672          | 6 973          | 149                   | 5 661          | 81                    | 1 699           | 980             | 58                                |
| 22 Oil-seeds and oleaginous fruits                            | 0              | 0              | 30                    | 10             |                       | 10              | 0               | 0                                 |
| 23 Crude rubber   | 14             | 17             | 128                   | 0              | 0                     | 0               | 0               | 0                                 |
| 24 Cork and wood  | 18 120         | 15 313         | 85                    | 17 385         | 114                   | 2 325           | 3 080           | 133                               |
| 25 Pulp and waste paper                                       | 1 237          | 1 127          | 91                    | 1 066          | 95                    | 279             | 233             | 84                                |
| 26 Textile fibres and their wastes                            | 104            | 81             | 78                    | 69             | 85                    | 0               | 1               |                                   |
| 27 Crude fertilizers, and crude minerals                      | 1 036          | 1 080          | 104                   | 1 189          | 110                   | 371             | 279             | 75                                |
| 28 Metalliferous ores and metal scrap                         | 38 769         | 31 291         | 81                    | 33 739         | 108                   | 8 931           | 6 773           | 76                                |
| 29 Crude animal and vegetable materials, n.e.s.               | 241            | 258            | 107                   | 534            | 207                   | 53              | 188             | 352                               |
| <b>3 Mineral fuels, lubricants and related materials</b>      | <b>62 957</b>  | <b>50 463</b>  | <b>80</b>             | <b>108 081</b> | <b>214</b>            | <b>26 522</b>   | <b>18 207</b>   | <b>69</b>                         |
| 32 Coal, coke and briquettes                                  | 2 560          | 2 565          | 100                   | 1 257          | 49                    | 122             | 114             | 94                                |
| 33 Petroleum, petroleum products and related materials        | 11 303         | 9 631          | 85                    | 11 199         | 116                   | 1 848           | 1 403           | 76                                |
| 34 Gas, natural and manufactured                              | 0              | 0              | 0                     | 45             |                       | 0               | 0               | 0                                 |
| 35 Electric current   | 49 094         | 38 268         | 78                    | 95 581         | 250                   | 24 552          | 16 690          | 68                                |
| <b>4 Animal oils and fats</b>                                 | <b>1 434</b>   | <b>3 257</b>   | <b>227</b>            | <b>2 270</b>   | <b>70</b>             | <b>262</b>      | <b>1 103</b>    | <b>422</b>                        |
| 41 Animal oils and fats                                       | 426            | 521            | 122                   | 612            | 117                   | 81              | 105             | 129                               |
| 42 Fixed vegetable fats and oils                              | 940            | 2 234          | 238                   | 1 374          | 62                    | 63              | 998             |                                   |
| 43 Animal or vegetable fats and oils, processed               | 68             | 503            | 740                   | 284            | 57                    | 117             | 0               | 0                                 |
| <b>5 Chemicals</b>  | <b>12 083</b>  | <b>11 972</b>  | <b>99</b>             | <b>9 239</b>   | <b>77</b>             | <b>1 944</b>    | <b>2 492</b>    | <b>128</b>                        |
| 51 Organic chemicals  | 60             | 73             | 122                   | 86             | 117                   | 1               | 2               | 252                               |
| 52 Inorganic chemicals  | 56             | 26             | 47                    | 52             | 198                   | 24              | 7               | 31                                |
| 53 Dyeing, tanning and colouring materials                    | 1 354          | 109            | 8                     | 59             | 55                    | 11              | 23              | 213                               |
| 54 Medicinal and pharmaceutical products                      | 7 832          | 9 507          | 121                   | 6 315          | 66                    | 1 229           | 1 129           | 92                                |
| 55 Essential oils, perfume materials, toilet prep.            | 1 005          | 905            | 90                    | 1 270          | 140                   | 273             | 147             | 54                                |
| 56 Fertilizers (other than those of group 272)                | 30             | 2              | 6                     | 0              | 0                     | 0               | 1               | 0                                 |
| 57 Plastics in primary forms                                  | 195            | 343            | 176                   | 216            | 63                    | 34              | 64              | 190                               |
| 58 Plastics in non-primary forms                              | 402            | 393            | 98                    | 342            | 87                    | 84              | 24              | 28                                |
| 59 Chemicals and products n.e.s.                              | 1 148          | 613            | 53                    | 898            | 146                   | 288             | 1 095           | 380                               |

**Table 11. Export of Montenegro by SITC sections**

/countinue/

| BREAKDOWN BY<br>SITC SECTIONS   | 2011           | 2012           | Index<br>2012<br>2011 | 2013           | Index<br>2013<br>2012 | Jan-Mar<br>2013 | Jan-Mar<br>2014 | Index<br>Jan-Mar 14<br>Jan-Mar 13 |
|---|----------------|----------------|-----------------------|----------------|-----------------------|-----------------|-----------------|-----------------------------------|
|   | thous. EUR     |                |                       | thous. EUR     |                       | thous. EUR      |                 |                                   |
| <b>6 Manufactured goods classified chiefly by material</b>                        | <b>219 443</b> | <b>154 046</b> | <b>70</b>             | <b>101 852</b> | <b>66</b>             | <b>30 123</b>   | <b>19 882</b>   | <b>66</b>                         |
| 61 Leather, leather manufactures and dressed fur skins                            | 282            | 278            | 99                    | 527            | 189                   | 58              | 66              | 113                               |
| 62 Rubber manufactures  | 242            | 164            | 68                    | 49             | 30                    | 9               | 81              | 888                               |
| 63 Cork and wood manufactures   | 932            | 889            | 95                    | 988            | 111                   | 176             | 158             | 90                                |
| 64 Paper, paperboard and articles of paper pulp                                   | 1 592          | 1 196          | 75                    | 745            | 62                    | 220             | 147             | 67                                |
| 65 Textile yarn, fabrics, made-up articles and related products                   | 173            | 292            | 169                   | 160            | 55                    | 10              | 33              | 323                               |
| 66 Non-metallic mineral manufactures  | 1 595          | 1 798          | 113                   | 4 305          | 239                   | 813             | 622             | 76                                |
| 67 Iron and steel   | 27 388         | 16 326         | 60                    | 12 172         | 75                    | 3 509           | 1 334           | 38                                |
| 68 Non-ferrous metals   | 182 402        | 128 649        | 71                    | 80 188         | 62                    | 24 912          | 17 010          | 68                                |
| 69 Manufactures of metals   | 4 837          | 4 454          | 92                    | 2 718          | 61                    | 415             | 432             | 104                               |
| <b>7 Machinery and transport equipment</b>  | <b>23 899</b>  | <b>25 896</b>  | <b>108</b>            | <b>25 888</b>  | <b>100</b>            | <b>5 186</b>    | <b>4 676</b>    | <b>90</b>                         |
| 71 Power-generating machinery and equipment                                       | 440            | 310            | 70                    | 305            | 98                    | 56              | 25              | 45                                |
| 72 Machinery specialized for particular industries                                | 3 361          | 2 994          | 89                    | 2 608          | 87                    | 291             | 140             | 48                                |
| 73 Metalworking machinery   | 297            | 264            | 89                    | 207            | 78                    | 62              | 55              | 89                                |
| 74 General industrial machinery and equipment                                     | 9 205          | 11 412         | 124                   | 10 678         | 94                    | 2 067           | 2 634           | 127                               |
| 75 Office machines and data-processing machines                                   | 536            | 354            | 66                    | 414            | 117                   | 122             | 128             | 105                               |
| 76 Telecommunications and sound-recording and reproducing apparatus and equipment | 510            | 1 280          | 251                   | 1 054          | 82                    | 160             | 145             | 91                                |
| 77 Electrical machinery, apparatus and appliances                                 | 3 878          | 2 485          | 64                    | 3 102          | 125                   | 758             | 720             | 95                                |
| 78 Road vehicles  | 3 693          | 3 247          | 88                    | 3 843          | 118                   | 764             | 585             | 77                                |
| 79 Other transport equipment  | 1 978          | 3 551          | 180                   | 3 677          | 104                   | 905             | 244             | 27                                |
| <b>8 Miscellaneous manufactured articles</b>                                      | <b>16 910</b>  | <b>8 111</b>   | <b>48</b>             | <b>9 087</b>   | <b>112</b>            | <b>1 639</b>    | <b>2 546</b>    | <b>155</b>                        |
| 81 Prefabricated buildings; sanitary equipment                                    | 198            | 136            | 68                    | 169            | 125                   | 25              | 31              | 124                               |
| 82 Furniture, and parts thereof   | 652            | 659            | 101                   | 812            | 123                   | 118             | 173             | 147                               |
| 83 Travel goods, handbags and similar containers                                  | 68             | 58             | 85                    | 78             | 134                   | 32              | 50              | 159                               |
| 84 Articles of apparel and clothing accessories                                   | 760            | 1 030          | 136                   | 764            | 74                    | 167             | 594             | 356                               |
| 85 Footwear   | 446            | 661            | 148                   | 818            | 124                   | 203             | 309             | 152                               |
| 87 Professional, scientific and controlling instruments                           | 287            | 210            | 73                    | 218            | 104                   | 42              | 14              | 34                                |
| 88 Photographic apparatus, equipment and supplies and optical goods               | 168            | 228            | 136                   | 96             | 42                    | 23              | 87              | 376                               |
| 89 Miscellaneous manufactured articles  | 14 330         | 5 129          | 36                    | 6 133          | 120                   | 1 029           | 1 287           | 125                               |
| <b>9 Commodities and transactions not classified elsewhere in the SITC</b>        | <b>2 800</b>   | <b>3 814</b>   | <b>136</b>            | <b>6 075</b>   | <b>159</b>            | <b>1 503</b>    | <b>317</b>      | <b>21</b>                         |

**Table 12. Import of Montenegro by SITC sections**

| BREAKDOWN BY<br>SITC SECTIONS                                 | 2011             | 2012             | Index<br>2012<br>2011 | 2013<br>thous. EUR | Index<br>2013<br>2012 | Jan-Mar<br>2013 | Jan-Mar<br>2014 | Index<br>Jan-Mar 14<br>Jan-Mar 13 |
|---|------------------|------------------|-----------------------|--------------------|-----------------------|-----------------|-----------------|-----------------------------------|
|   | thous. EUR       |                  |                       |                    |                       | thous. EUR      |                 |                                   |
| <b>0-9 TOTAL</b>  | <b>1 823 337</b> | <b>1 820 850</b> | <b>100</b>            | <b>1 773 352</b>   | <b>97</b>             | <b>362 934</b>  | <b>340 602</b>  | <b>94</b>                         |
| <b>0 Food and live animals</b>                                | <b>351 857</b>   | <b>356 578</b>   | <b>101</b>            | <b>368 149</b>     | <b>103</b>            | <b>69 817</b>   | <b>66 955</b>   | <b>96</b>                         |
| 00 Live animals   | 25 509           | 24 151           | 95                    | 22 935             | 95                    | 4 987           | 4 178           | 84                                |
| 01 Meat and meat preparations                                 | 74 023           | 84 255           | 114                   | 91 848             | 109                   | 18 580          | 17 812          | 96                                |
| 02 Dairy products and eggs                                    | 46 664           | 48 449           | 104                   | 49 156             | 101                   | 7 909           | 8 302           | 105                               |
| 03 Fish and preparations                                      | 10 585           | 11 083           | 105                   | 12 896             | 116                   | 1 755           | 1 689           | 96                                |
| 04 Cereal and cereal products                                 | 57 092           | 57 069           | 100                   | 55 255             | 97                    | 10 696          | 9 908           | 93                                |
| 05 Vegetables and fruit                                       | 38 681           | 37 644           | 97                    | 44 504             | 118                   | 8 749           | 8 138           | 93                                |
| 06 Sugars, sugar preparations and honey                       | 12 826           | 12 034           | 94                    | 11 273             | 94                    | 1 951           | 1 778           | 91                                |
| 07 Coffee, tea, cocoa, spices and manufactures thereof        | 44 524           | 35 924           | 81                    | 33 390             | 93                    | 6 588           | 6 583           | 100                               |
| 08 Feeding stuff for animals (not including unmilled cereals) | 16 367           | 18 557           | 113                   | 16 873             | 91                    | 3 647           | 3 234           | 89                                |
| 09 Miscellaneous edible products and preparat.                | 25 586           | 27 411           | 107                   | 30 019             | 110                   | 4 957           | 5 333           | 108                               |
| <b>1 Beverages and tobacco</b>                                | <b>65 850</b>    | <b>65 091</b>    | <b>99</b>             | <b>64 802</b>      | <b>100</b>            | <b>8 895</b>    | <b>8 828</b>    | <b>99</b>                         |
| 11 Beverages  | 50 939           | 53 413           | 105                   | 52 079             | 98                    | 6 382           | 6 930           | 109                               |
| 12 Tobacco and tobacco manufactures                           | 14 910           | 11 678           | 78                    | 12 724             | 109                   | 2 513           | 1 898           | 76                                |
| <b>2 Crude materials, inedible, except fuels</b>              | <b>84 420</b>    | <b>60 358</b>    | <b>71</b>             | <b>48 593</b>      | <b>81</b>             | <b>11 629</b>   | <b>10 497</b>   | <b>90</b>                         |
| 21 Hides, skins and fur skins, raw                            | 0                | 2 231            |                       | 974                | 44                    | 575             | 214             | 37                                |
| 22 Oil-seeds and oleaginous fruits                            | 603              | 371              | 61                    | 502                | 135                   | 101             | 79              | 78                                |
| 23 Crude rubber   | 162              | 63               | 39                    | 79                 | 125                   | 1               | 15              |                                   |
| 24 Cork and wood  | 6 497            | 5 770            | 89                    | 5 939              | 103                   | 1 225           | 863             | 70                                |
| 25 Pulp and waste paper                                       | 8                | 15               | 196                   | 5                  | 36                    | 0               | 2               | 450                               |
| 26 Textile fibres and their wastes                            | 508              | 803              | 158                   | 1 036              | 129                   | 239             | 223             | 93                                |
| 27 Crude fertilizers, and crude minerals                      | 3 320            | 2 354            | 71                    | 2 439              | 104                   | 338             | 446             | 132                               |
| 28 Metalliferous ores and metal scrap                         | 67 708           | 43 640           | 64                    | 32 012             | 73                    | 7 553           | 6 549           | 87                                |
| 29 Crude animal and vegetable materials, n.e.s.               | 5 614            | 5 111            | 91                    | 5 604              | 110                   | 1 596           | 2 107           | 132                               |
| <b>3 Mineral fuels, lubricants and related materials</b>      | <b>330 590</b>   | <b>334 356</b>   | <b>101</b>            | <b>257 993</b>     | <b>77</b>             | <b>53 479</b>   | <b>46 307</b>   | <b>87</b>                         |
| 32 Coal, coke and briquettes                                  | 419              | 411              | 98                    | 640                | 156                   | 181             | 136             | 75                                |
| 33 Petroleum, petroleum products and related materials        | 207 229          | 213 758          | 103                   | 190 674            | 89                    | 36 635          | 33 489          | 91                                |
| 34 Gas, natural and manufactured                              | 13 987           | 13 692           | 98                    | 12 226             | 89                    | 2 628           | 2 319           | 88                                |
| 35 Electric current   | 108 954          | 106 495          | 98                    | 54 453             | 51                    | 14 034          | 10 364          | 74                                |
| <b>4 Animal oils and fats</b>                                 | <b>14 844</b>    | <b>16 073</b>    | <b>108</b>            | <b>14 400</b>      | <b>90</b>             | <b>2 995</b>    | <b>2 686</b>    | <b>90</b>                         |
| 41 Animal oils and fats                                       | 564              | 638              | 113                   | 609                | 95                    | 142             | 135             | 96                                |
| 42 Fixed vegetable fats and oils                              | 13 814           | 15 058           | 109                   | 13 557             | 90                    | 2 780           | 2 513           | 90                                |
| 43 Animal or vegetable fats and oils, processed               | 465              | 377              | 81                    | 234                | 62                    | 73              | 37              | 51                                |
| <b>5 Chemicals</b>  | <b>169 589</b>   | <b>169 570</b>   | <b>100</b>            | <b>179 280</b>     | <b>106</b>            | <b>36 977</b>   | <b>36 152</b>   | <b>98</b>                         |
| 51 Organic chemicals  | 2 167            | 2 191            | 101                   | 2 550              | 116                   | 667             | 476             | 71                                |
| 52 Inorganic chemicals  | 4 935            | 4 531            | 92                    | 3 431              | 76                    | 769             | 593             | 77                                |
| 53 Dyeing, tanning and colouring materials                    | 20 577           | 18 842           | 92                    | 21 212             | 113                   | 3 619           | 4 354           | 120                               |
| 54 Medicinal and pharmaceutical products                      | 54 996           | 54 860           | 100                   | 57 634             | 105                   | 13 228          | 11 745          | 89                                |
| 55 Essential oils, perfume materials, toilet prep.            | 43 561           | 43 690           | 100                   | 45 267             | 104                   | 8 491           | 8 435           | 99                                |
| 56 Fertilizers (other than those of group 272)                | 2 504            | 2 490            | 99                    | 2 800              | 112                   | 915             | 1 255           | 137                               |
| 57 Plastics in primary forms                                  | 2 585            | 2 856            | 110                   | 3 122              | 109                   | 586             | 704             | 120                               |
| 58 Plastics in non-primary forms                              | 20 704           | 23 062           | 111                   | 24 555             | 106                   | 4 627           | 5 226           | 113                               |
| 59 Chemicals and products n.e.s.                              | 17 560           | 17 047           | 97                    | 18 709             | 110                   | 4 074           | 3 365           | 83                                |

**Table 12. Import of Montenegro by SITC sections**

/continue/

| BREAKDOWN BY<br>SITC SECTIONS   | 2011           | 2012           | Index<br>2012<br>2011 | 2013           | Index<br>2013<br>2012 | Jan-Mar<br>2013 | Jan-Mar<br>2014 | Index<br>Jan-Mar 14<br>Jan-Mar 13 |
|---|----------------|----------------|-----------------------|----------------|-----------------------|-----------------|-----------------|-----------------------------------|
|   | thous. EUR     |                |                       | thous. EUR     |                       | thous. EUR      |                 |                                   |
| <b>6 Manufactured goods classified chiefly by material</b>                        | <b>264 771</b> | <b>263 391</b> | <b>99</b>             | <b>263 914</b> | <b>100</b>            | <b>49 245</b>   | <b>55 065</b>   | <b>112</b>                        |
| 61 Leather, leather manufactures and dressed fur skins                            | 231            | 286            | 124                   | 362            | 126                   | 59              | 160             | 270                               |
| 62 Rubber manufactures  | 15 396         | 19 420         | 126                   | 15 316         | 79                    | 2 681           | 2 586           | 96                                |
| 63 Cork and wood manufactures   | 17 300         | 17 844         | 103                   | 17 362         | 97                    | 3 307           | 3 770           | 114                               |
| 64 Paper, paperboard and articles of paper pulp                                   | 28 833         | 29 367         | 102                   | 29 700         | 101                   | 6 191           | 5 800           | 94                                |
| 65 Textile yarn, fabrics, made-up articles and related products                   | 12 333         | 13 386         | 109                   | 13 122         | 98                    | 2 203           | 2 297           | 104                               |
| 66 Non-metallic mineral manufactures  | 72 952         | 71 065         | 97                    | 74 119         | 104                   | 13 893          | 15 208          | 109                               |
| 67 Iron and steel   | 41 170         | 36 336         | 88                    | 40 825         | 112                   | 7 616           | 9 635           | 127                               |
| 68 Non-ferrous metals   | 13 190         | 13 130         | 100                   | 13 542         | 103                   | 2 717           | 2 732           | 101                               |
| 69 Manufactures of metals   | 63 366         | 62 557         | 99                    | 59 566         | 95                    | 10 578          | 12 878          | 122                               |
| <b>7 Machinery and transport equipment</b>  | <b>315 905</b> | <b>332 870</b> | <b>105</b>            | <b>345 352</b> | <b>104</b>            | <b>85 026</b>   | <b>67 964</b>   | <b>80</b>                         |
| 71 Power-generating machinery and equipment                                       | 5 486          | 8 344          | 152                   | 5 574          | 67                    | 705             | 1 209           | 171                               |
| 72 Machinery specialized for particular industries                                | 28 699         | 21 933         | 76                    | 17 282         | 79                    | 3 532           | 3 903           | 111                               |
| 73 Metalworking machinery   | 3 293          | 2 001          | 61                    | 4 210          | 210                   | 529             | 281             | 53                                |
| 74 General industrial machinery and equipment                                     | 50 092         | 51 208         | 102                   | 52 935         | 103                   | 10 118          | 12 412          | 123                               |
| 75 Office machines and data-processing machines                                   | 21 821         | 21 926         | 100                   | 23 713         | 108                   | 6 651           | 5 409           | 81                                |
| 76 Telecommunications and sound-recording and reproducing apparatus and equipment | 38 118         | 34 089         | 89                    | 42 160         | 124                   | 9 598           | 10 744          | 112                               |
| 77 Electrical machinery, apparatus and appliances                                 | 66 827         | 69 974         | 105                   | 70 467         | 101                   | 12 435          | 13 426          | 108                               |
| 78 Road vehicles  | 95 478         | 97 478         | 102                   | 92 178         | 95                    | 19 790          | 19 480          | 98                                |
| 79 Other transport equipment  | 6 089          | 25 917         | 426                   | 36 833         | 142                   | 21 669          | 1 099           | 5                                 |
| <b>8 Miscellaneous manufactured articles</b>                                      | <b>224 777</b> | <b>222 137</b> | <b>99</b>             | <b>226 679</b> | <b>102</b>            | <b>44 851</b>   | <b>46 149</b>   | <b>103</b>                        |
| 81 Prefabricated buildings; sanitary equipment                                    | 10 939         | 12 014         | 110                   | 11 704         | 97                    | 1 675           | 1 972           | 118                               |
| 82 Furniture, and parts thereof   | 42 448         | 40 664         | 96                    | 40 102         | 99                    | 6 288           | 6 497           | 103                               |
| 83 Travel goods, handbags and similar containers                                  | 5 333          | 5 826          | 109                   | 6 856          | 118                   | 1 503           | 1 523           | 101                               |
| 84 Articles of apparel and clothing accessories                                   | 46 507         | 48 900         | 105                   | 53 334         | 109                   | 11 044          | 11 973          | 108                               |
| 85 Footwear   | 27 256         | 30 292         | 111                   | 31 476         | 104                   | 7 914           | 8 925           | 113                               |
| 87 Professional, scientific and controlling instruments                           | 16 430         | 18 563         | 113                   | 17 821         | 96                    | 4 842           | 2 612           | 54                                |
| 88 Photographic apparatus, equipment and supplies and optical goods               | 4 815          | 4 497          | 93                    | 4 528          | 101                   | 620             | 815             | 132                               |
| 89 Miscellaneous manufactured articles  | 71 049         | 61 380         | 86                    | 60 858         | 99                    | 10 966          | 11 831          | 108                               |
| <b>9 Commodities and transactions not classified elsewhere in the SITC</b>        | <b>734</b>     | <b>425</b>     | <b>58</b>             | <b>4 190</b>   | <b>985</b>            | <b>20</b>       | <b>0</b>        | <b>0</b>                          |

## METHODOLOGICAL EXPLANATIONS

External trade statistics represents an important source of primary importance for a number of institutions creating economy policy, as well as for decision making at the state and certain entities level. It serves as the basic source of information for estimation of balance of payments and national accounts of country, for preparation multilateral and bilateral negotiations, enterprises to explore market and to define their position in it.

Data collection on external trade is based on recommendations UN and EU statistics contained in the following publications:

- International merchandise Trade Statistics, Concept and Definitions, UN
- Statistics on the Trade of Goods, User Guide, EUROSTAT

It is harmonised with regulations of COMMUNITY LEGISLATION applicable to the STATISTICS RELATING TO THE TRADE OF GOODS, related to EXTRASTAT

- Regulation (EC) No. 471/2009 of the European Parliament and Council
- Commission Regulation (EC) No. 92/2010
- Commission Regulation (EC) No. 113/2010

### Data source

Data source for external trade of Montenegro is customs declarations on export and import of goods. Customs declaration is a document applied in customs procedure. It contains data important for the very customs procedure, but also for needs of statistics and other users. MONSTAT takes over the data in electronic form from Customs Administration of Montenegro with monthly periodicity, and further processes and publishes the results.

Since 2002 under customs procedure when using tariffs of products, Combined Nomenclature harmonised with EU Combined Nomenclature is used. It is published in the Official Gazette of Montenegro for the current year.

### External trade coverage

**Export** covers the goods leaving the statistical territory of Montenegro in accordance with the following customs procedures:

- a) Export
- b) Outward processing
- c) Re-export that was in the procedure of inward processing and manufacture of goods under customs control

**Import** covers all goods entering the statistical territory of Montenegro in accordance with the following customs procedures:

- a) Import for free trade
- b) Inward processing
- c) Manufacture of goods under customs control

Classification of export-import is performed in accordance with Nomenclature for External Trade Statistics which is based on Standard International Trade Classification (SITC), rev. 4. The code of every products classified by SITC has the following structure: first number means sector, second one – section, third – group, fourth – subgroup, and fifth number – position, i.e. product.

**Published by Statistical Office of Montenegro (MONSTAT)  
81000 Podgorica, IV Proleterske 2, Phone: (+382) 20 230-811, Fax:(+382) 20 230-814**

The release prepared by:

**Ivan LAKOVIC**

Phone: +382 20 230 805

e-mail: [contact@monstat.org](mailto:contact@monstat.org)